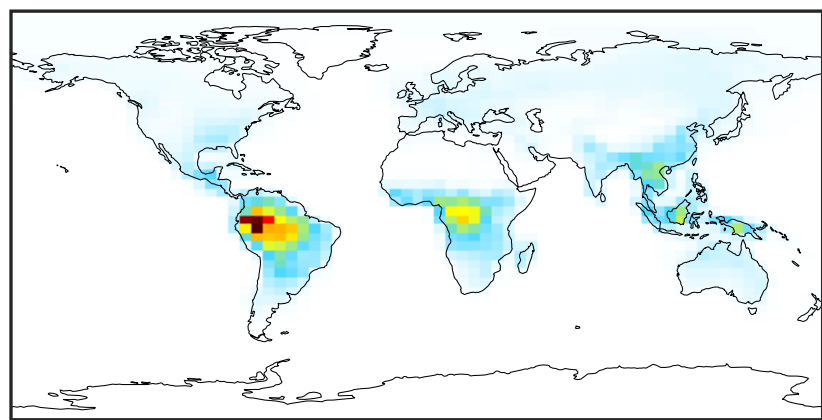


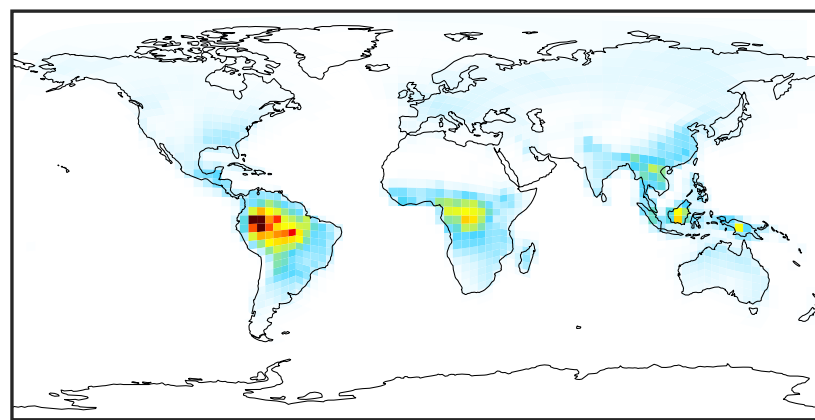
# SpeciesConcVV\_EOH (Apr2019)

14.3.0-rc.0 (Ref)  
4.0x5.0



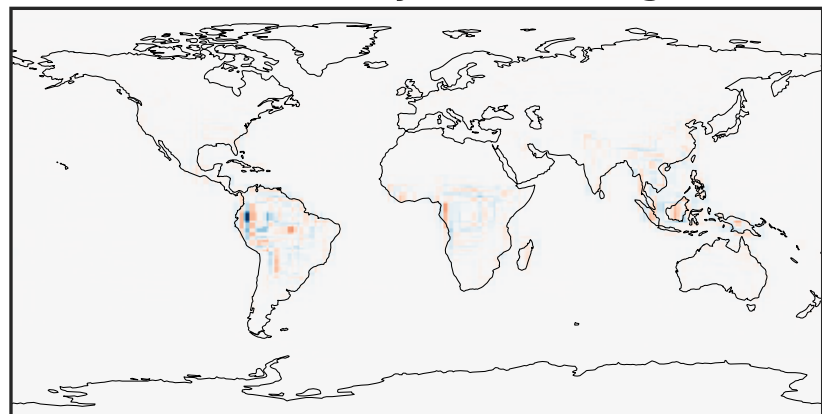
0.00 0.72 1.44 2.16 2.88  
ppb

14.3.0-rc.0 (Dev)  
c24



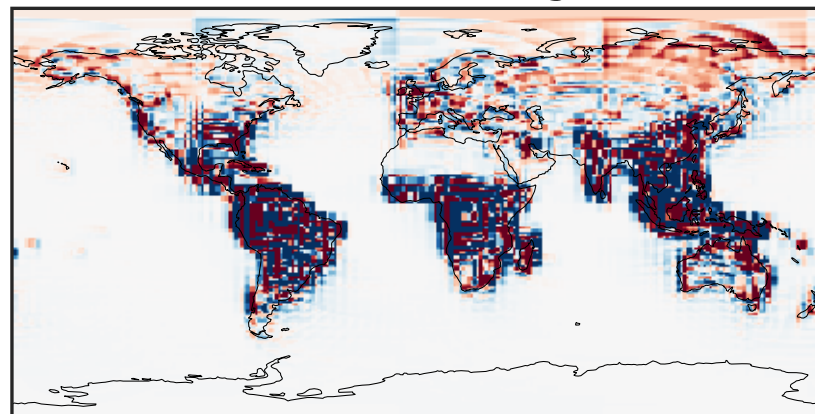
0.00 0.72 1.44 2.16 2.88  
ppb

Difference (1x1.25)  
Dev - Ref, Dynamic Range



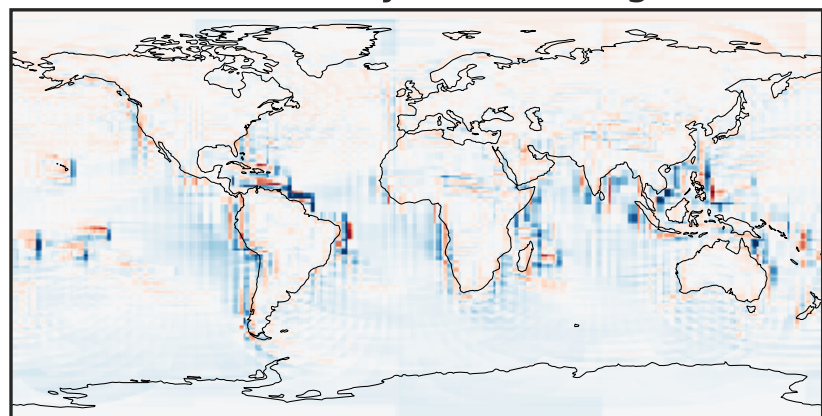
-1.530 -0.765 0.000 0.765 1.530  
ppb

Difference (1x1.25)  
Dev - Ref, Restricted Range [5%,95%]



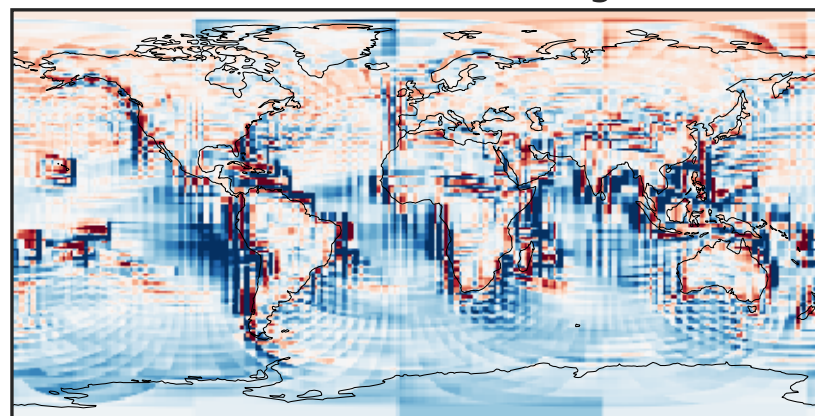
-0.015 0.000 0.015  
ppb

Ratio (1x1.25)  
Dev/Ref, Dynamic Range



1e-01 1 10  
unitless

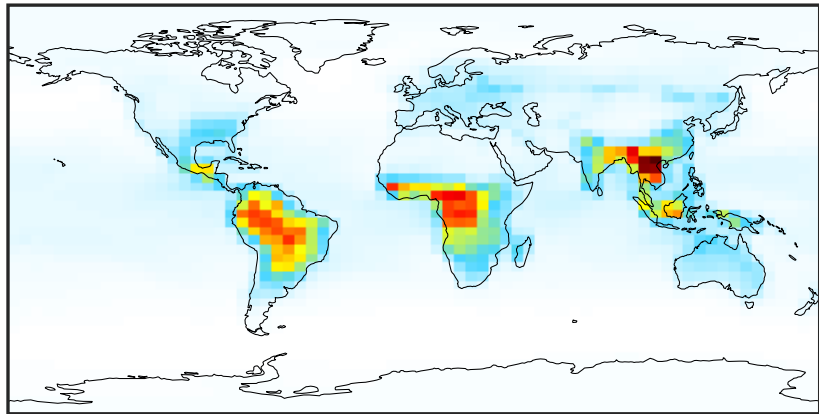
Ratio (1x1.25)  
Dev/Ref, Fixed Range



0.50 0.75 1.00 1.50 2.00  
unitless

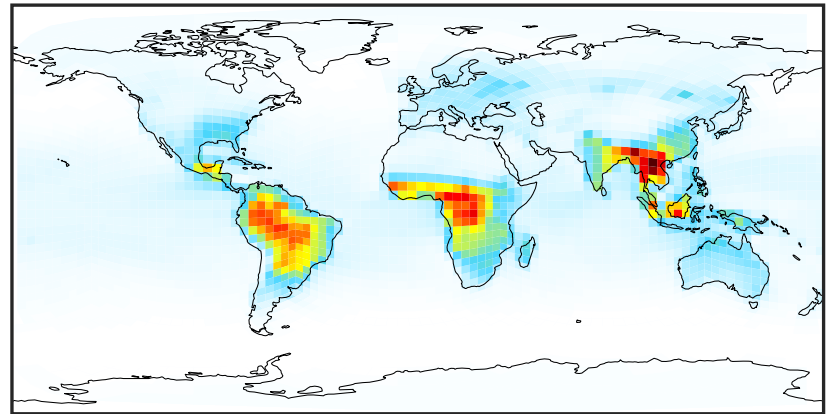
# SpeciesConcVV\_MOH (Apr2019)

14.3.0-rc.0 (Ref)  
4.0x5.0



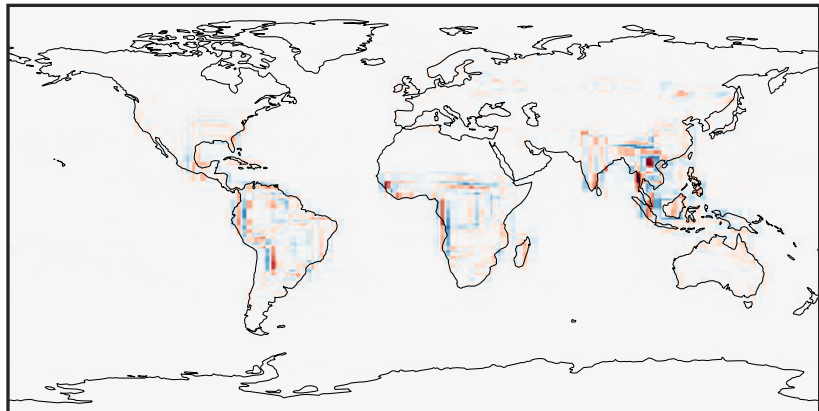
0.028 2.167 4.306 6.444 8.583  
ppb

14.3.0-rc.0 (Dev)  
c24



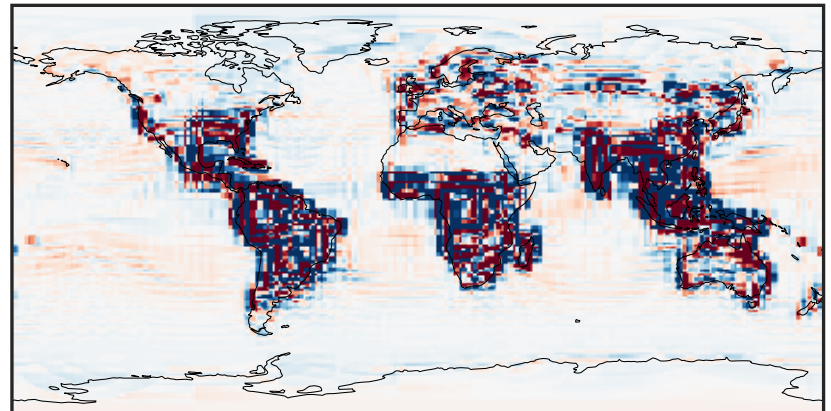
0.028 2.167 4.306 6.444 8.583  
ppb

Difference (1x1.25)  
Dev - Ref, Dynamic Range



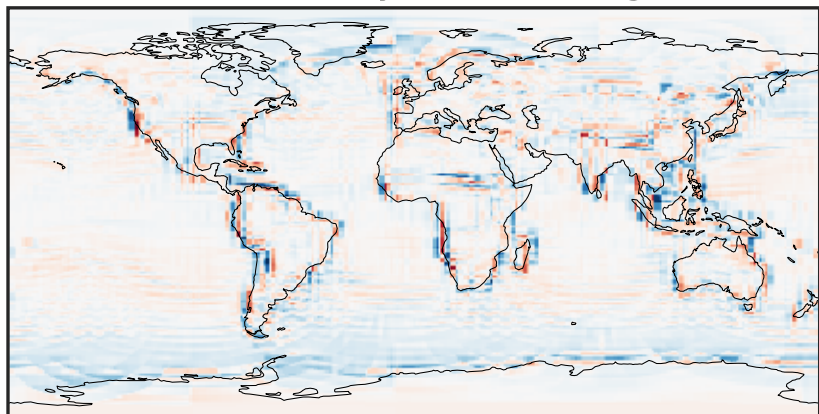
-3.150 -1.575 0.000 1.575 3.150  
ppb

Difference (1x1.25)  
Dev - Ref, Restricted Range [5%,95%]



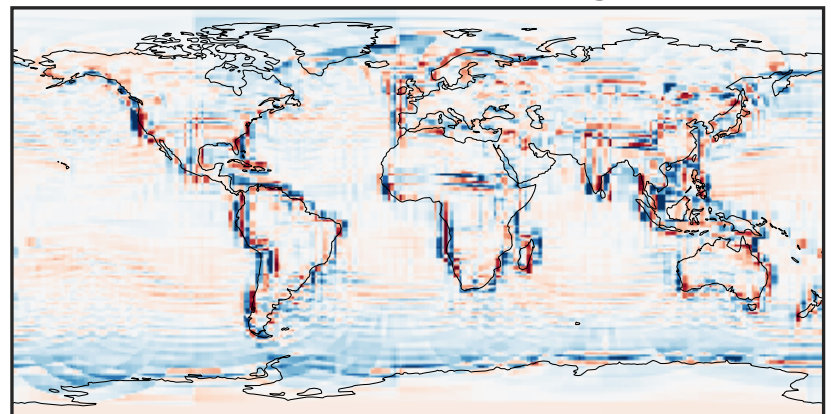
-0.1537 -0.0768 0.0000 0.0768 0.1537  
ppb

Ratio (1x1.25)  
Dev/Ref, Dynamic Range



0.297 0.648 1.000 2.185 3.370  
unitless

Ratio (1x1.25)  
Dev/Ref, Fixed Range

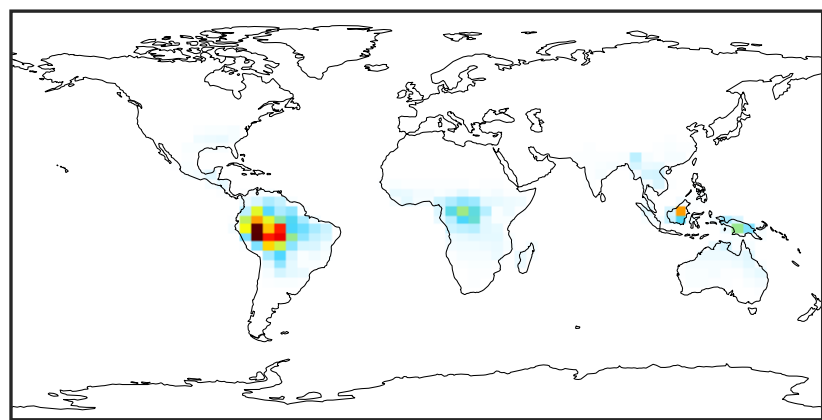


0.50 0.75 1.00 1.50 2.00  
unitless



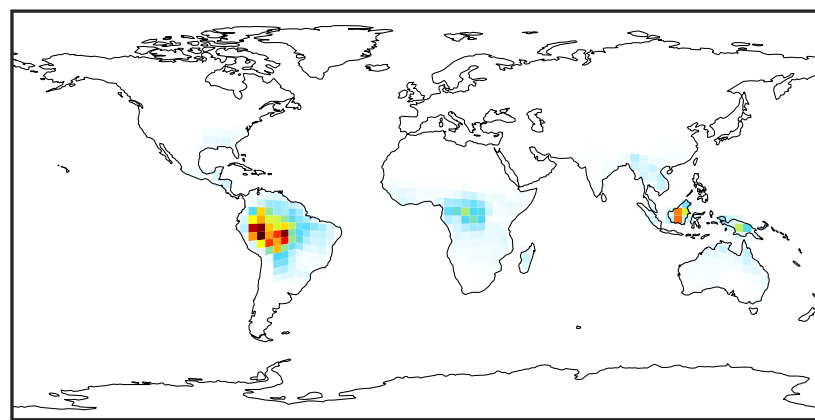
# SpeciesConcVV\_ISOP (Apr2019)

14.3.0-rc.0 (Ref)  
4.0x5.0



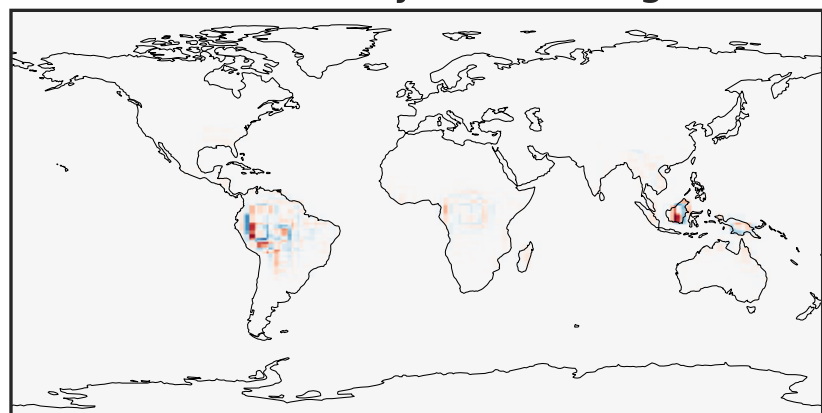
0.00 3.21 6.42 9.63 12.84  
ppb

14.3.0-rc.0 (Dev)  
c24



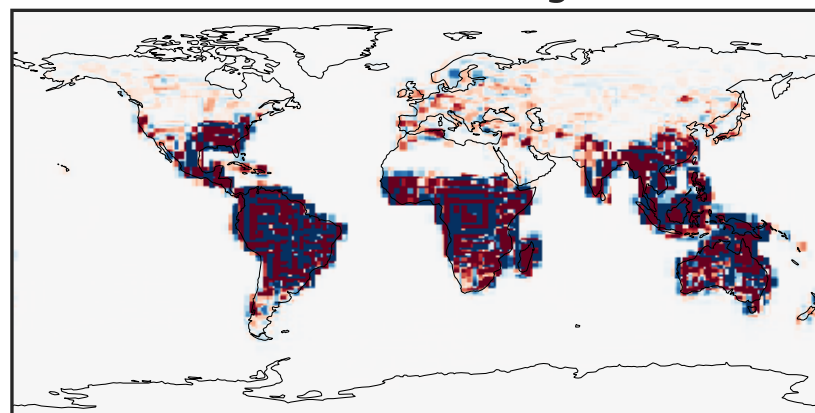
0.00 3.21 6.42 9.63 12.84  
ppb

Difference (1x1.25)  
Dev - Ref, Dynamic Range



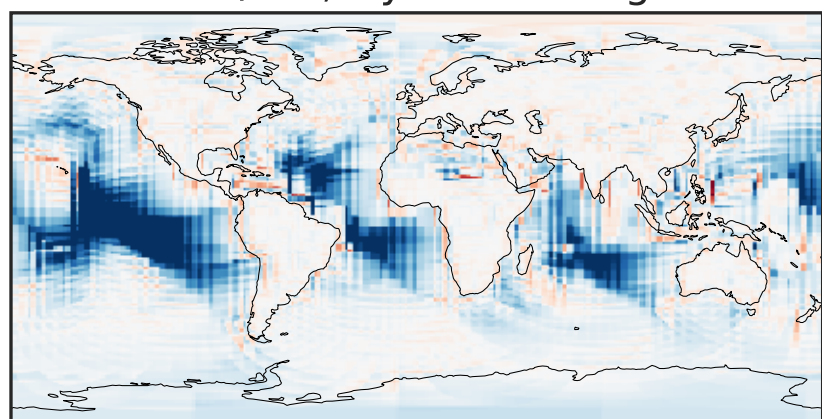
-6.08 -3.04 0.00 3.04 6.08  
ppb

Difference (1x1.25)  
Dev - Ref, Restricted Range [5%,95%]



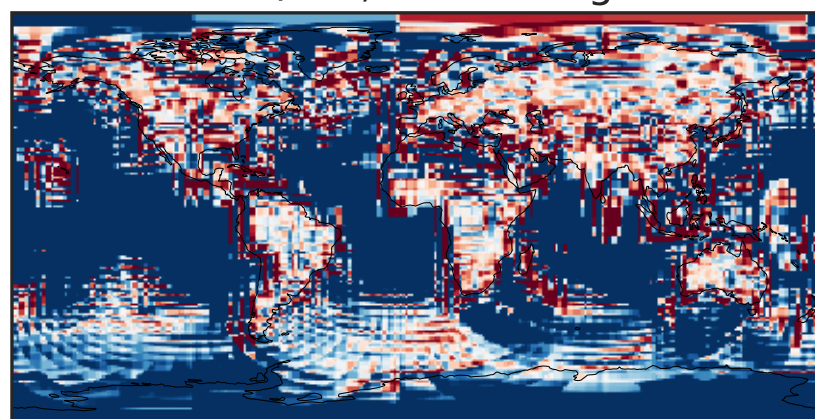
-0.008 0.000 0.008  
ppb

Ratio (1x1.25)  
Dev/Ref, Dynamic Range



unitless

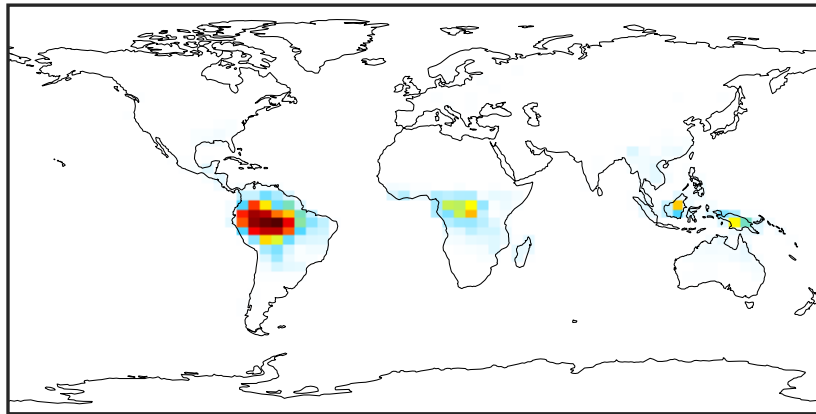
Ratio (1x1.25)  
Dev/Ref, Fixed Range



0.50 0.75 1.00 1.50 2.00  
unitless

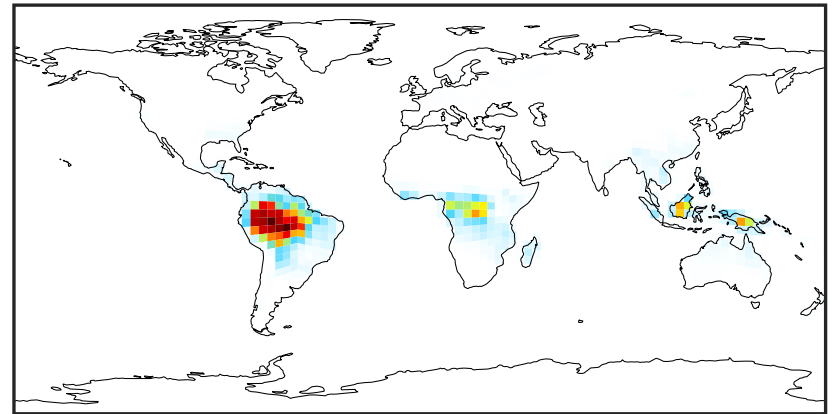
# SpeciesConcVV\_MTPA (Apr2019)

14.3.0-rc.0 (Ref)  
4.0x5.0



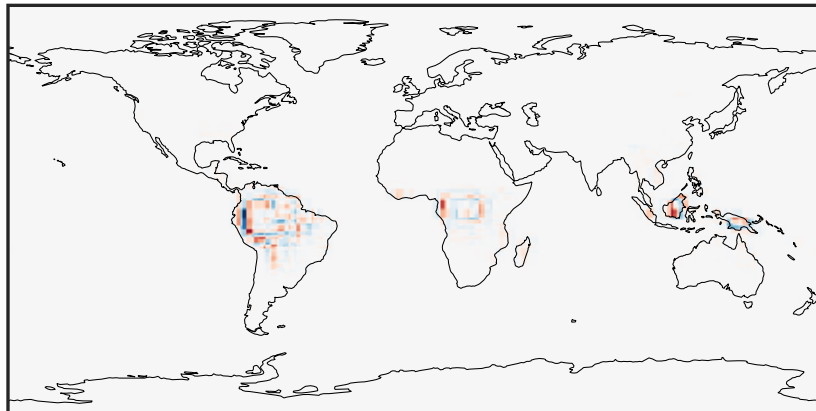
0.000 0.568 1.136 1.704 2.272  
ppb

14.3.0-rc.0 (Dev)  
c24



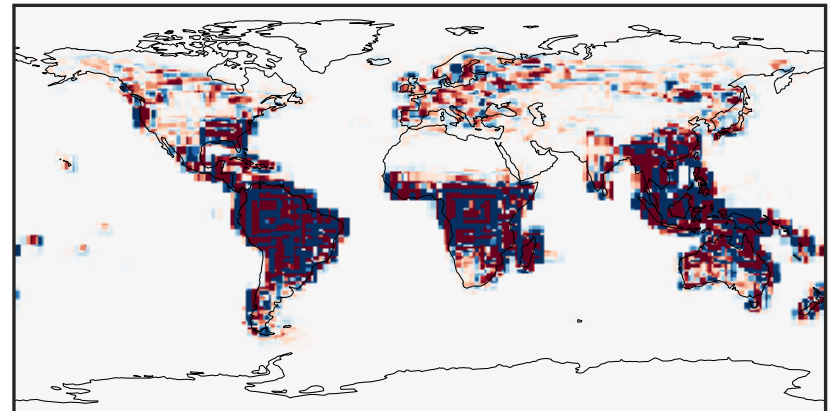
0.000 0.568 1.136 1.704 2.272  
ppb

Difference (1x1.25)  
Dev - Ref, Dynamic Range



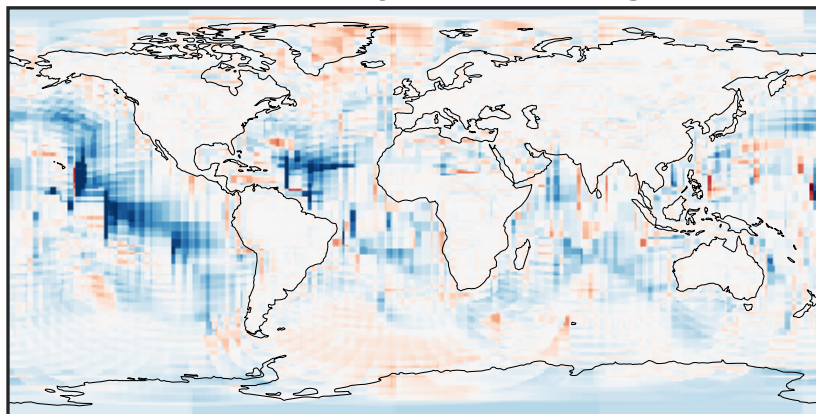
-1.003 -0.501 0.000 0.501 1.003  
ppb

Difference (1x1.25)  
Dev - Ref, Restricted Range [5%,95%]



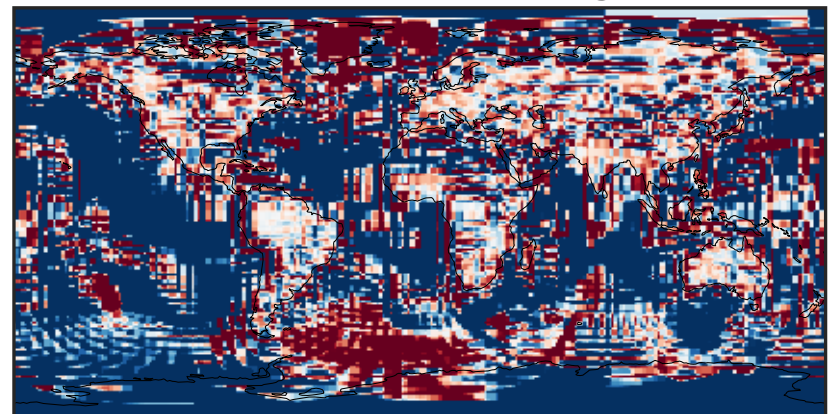
-0.0015 0.0000 0.0015  
ppb

Ratio (1x1.25)  
Dev/Ref, Dynamic Range



unitless

Ratio (1x1.25)  
Dev/Ref, Fixed Range

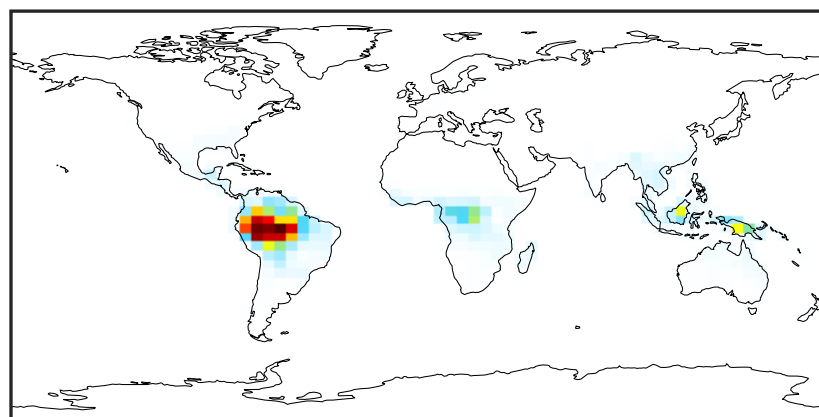


0.50 0.75 1.00 1.50 2.00  
unitless



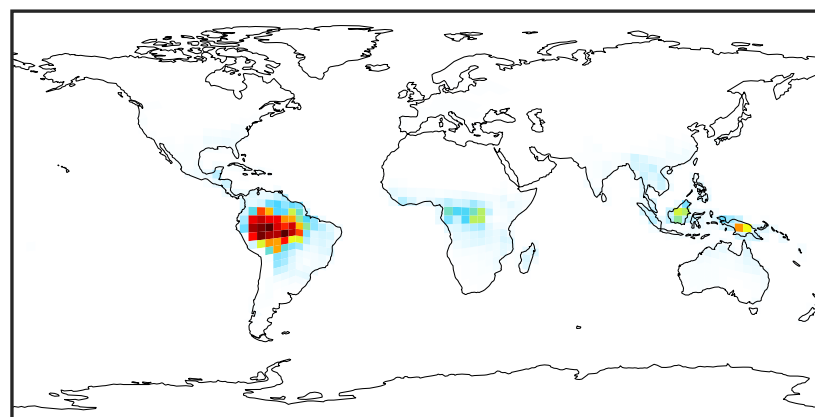
# SpeciesConcVV\_MTPO (Apr2019)

14.3.0-rc.0 (Ref)  
4.0x5.0



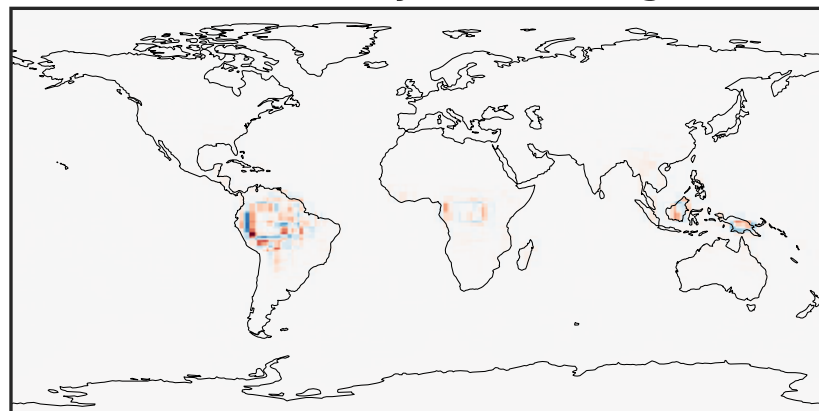
0.0000 0.0358 0.0717 0.1075 0.1434  
ppb

14.3.0-rc.0 (Dev)  
c24



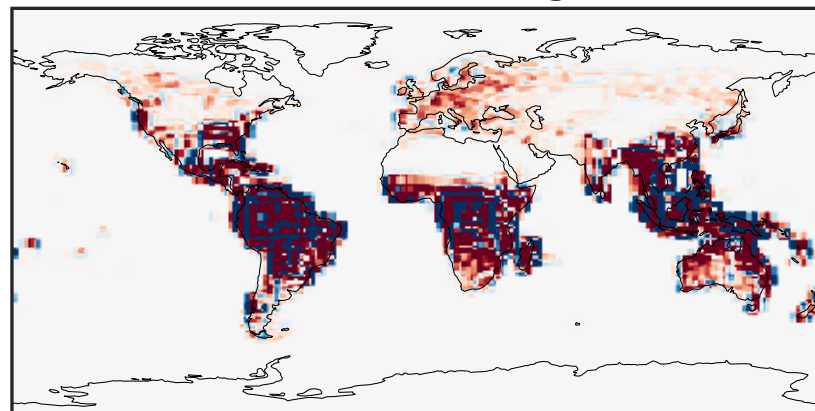
0.0000 0.0358 0.0717 0.1075 0.1434  
ppb

Difference (1x1.25)  
Dev - Ref, Dynamic Range



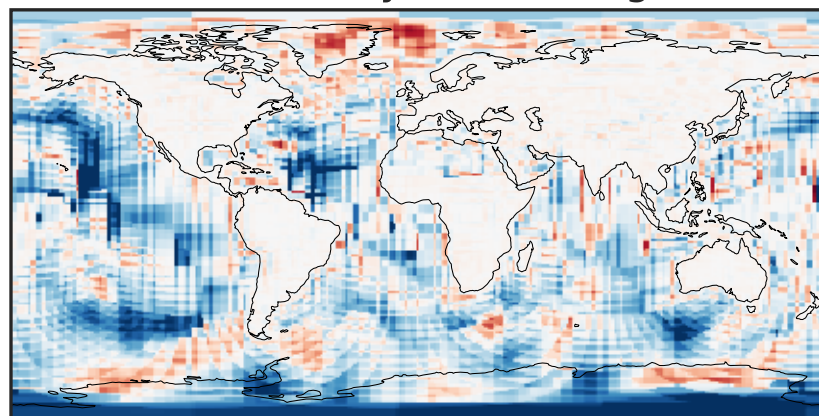
-0.0730 -0.0365 0.0000 0.0365 0.0730  
ppb

Difference (1x1.25)  
Dev - Ref, Restricted Range [5%,95%]



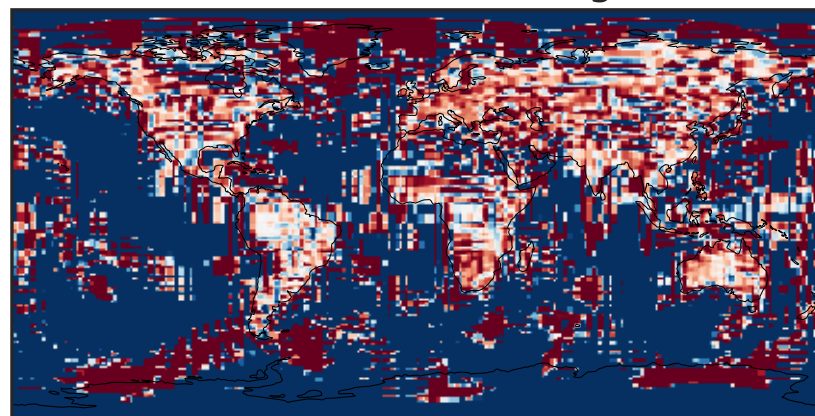
-0.00025 0.00000 0.00025  
ppb

Ratio (1x1.25)  
Dev/Ref, Dynamic Range



1e-05 1e-02 10 1e4 1e+07  
unitless

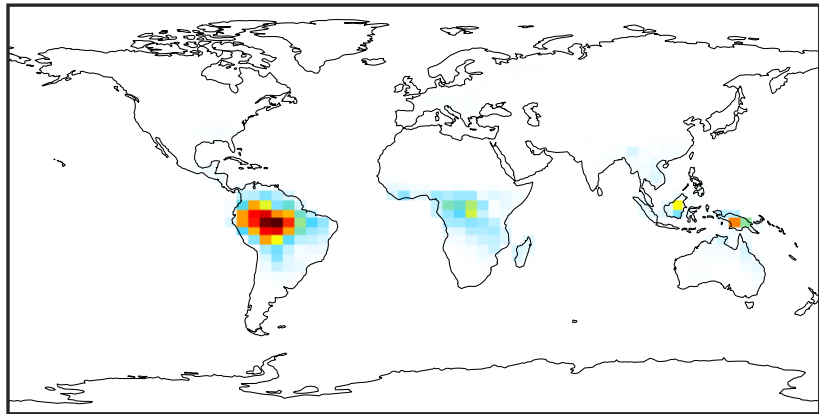
Ratio (1x1.25)  
Dev/Ref, Fixed Range



0.50 0.75 1.00 1.50 2.00  
unitless

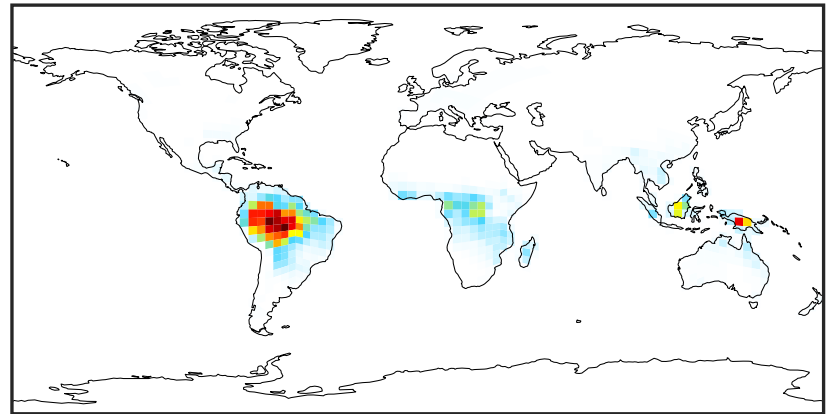
# SpeciesConcVV\_LIMO (Apr2019)

14.3.0-rc.0 (Ref)  
4.0x5.0



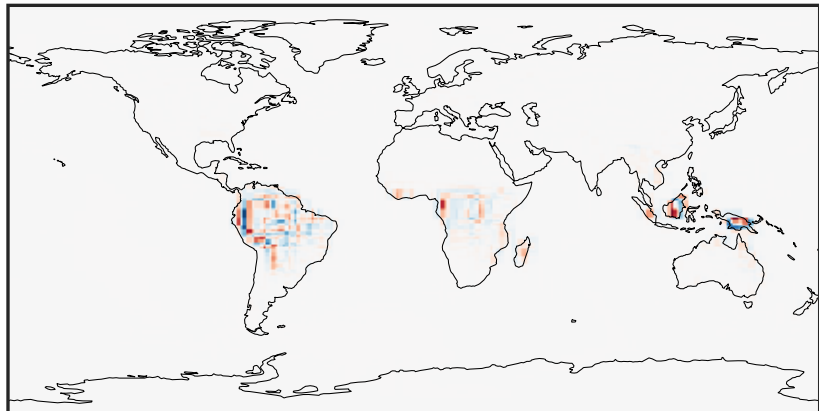
0.000 0.032 0.064 0.096 0.128  
ppb

14.3.0-rc.0 (Dev)  
c24



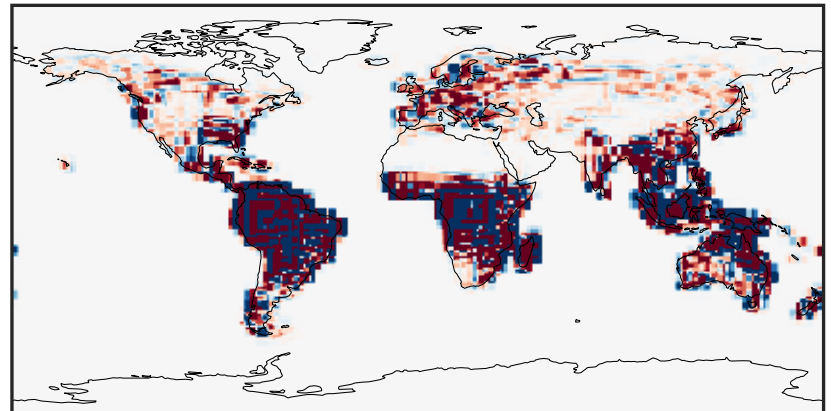
0.000 0.032 0.064 0.096 0.128  
ppb

Difference (1x1.25)  
Dev - Ref, Dynamic Range



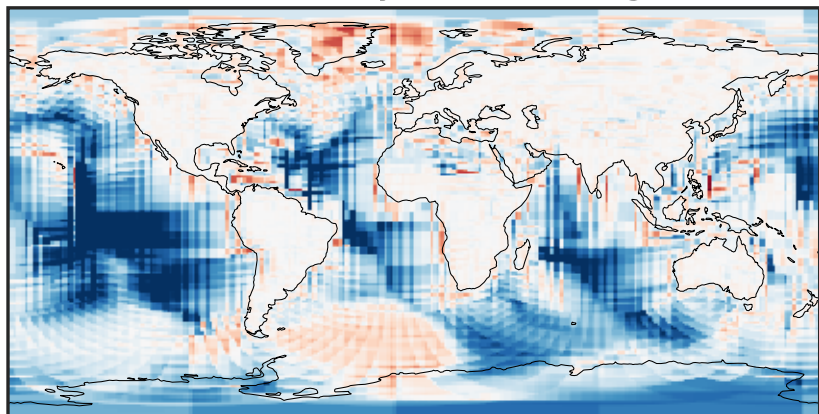
-0.025 0.000 0.025  
ppb

Difference (1x1.25)  
Dev - Ref, Restricted Range [5%,95%]



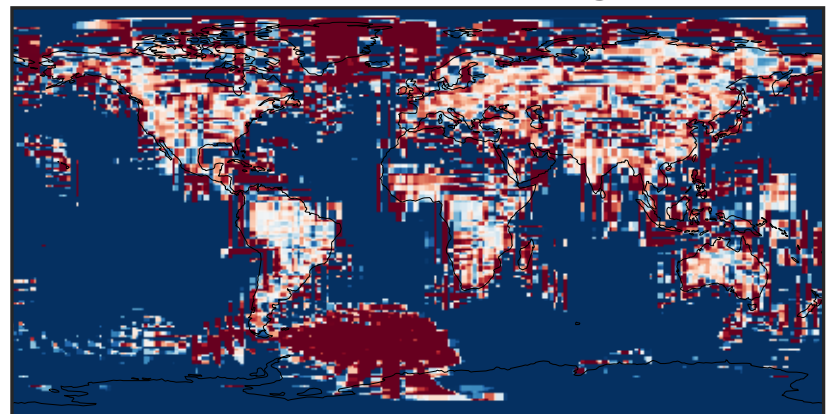
-0.00015 0.00000 0.00015  
ppb

Ratio (1x1.25)  
Dev/Ref, Dynamic Range



unitless

Ratio (1x1.25)  
Dev/Ref, Fixed Range

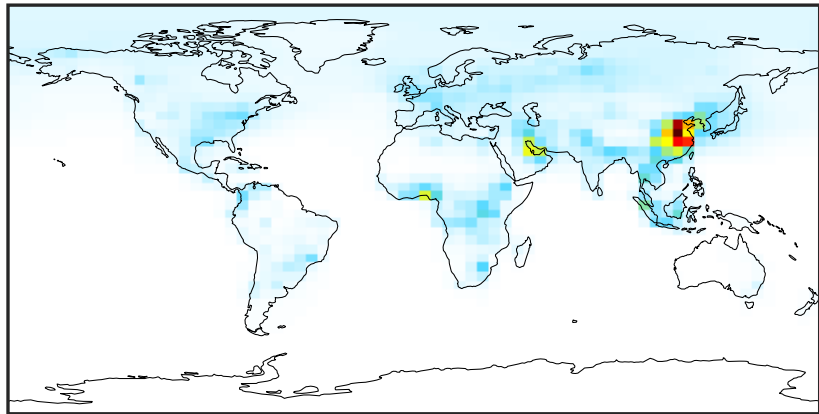


0.50 0.75 1.00 1.50 2.00  
unitless



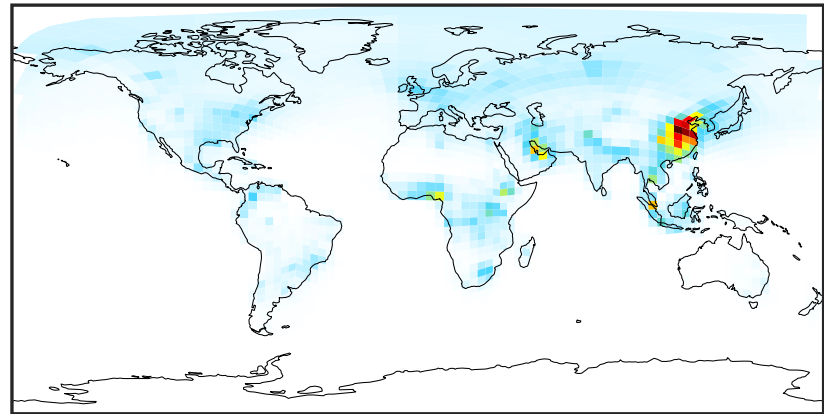
# SpeciesConcVV\_ALK4 (Apr2019)

14.3.0-rc.0 (Ref)  
4.0x5.0



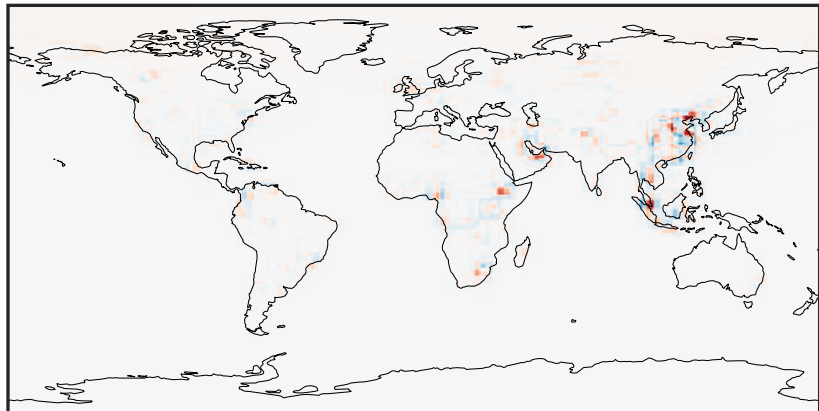
0.000 2.184 4.367 6.551 8.735  
ppb

14.3.0-rc.0 (Dev)  
c24



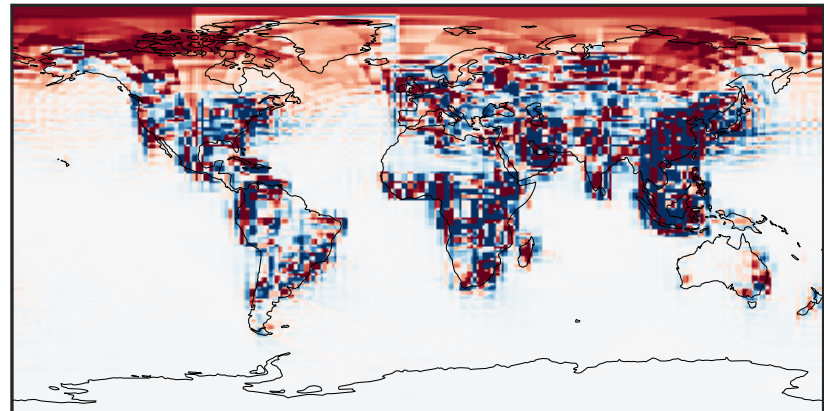
0.000 2.184 4.367 6.551 8.735  
ppb

Difference (1x1.25)  
Dev - Ref, Dynamic Range



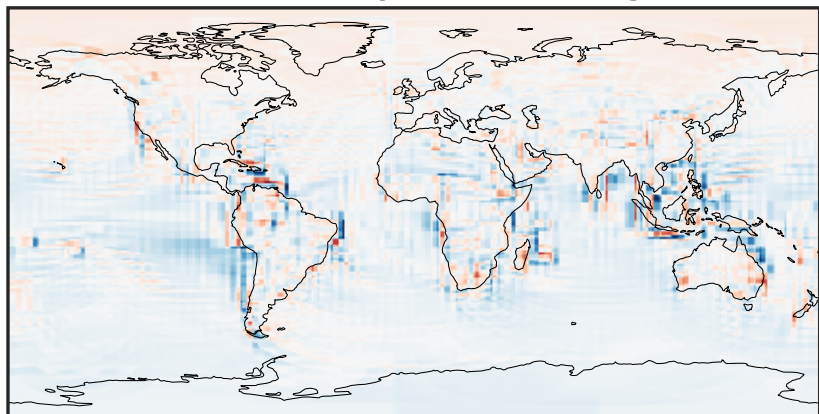
-3.917 -1.958 0.000 1.958 3.917  
ppb

Difference (1x1.25)  
Dev - Ref, Restricted Range [5%,95%]



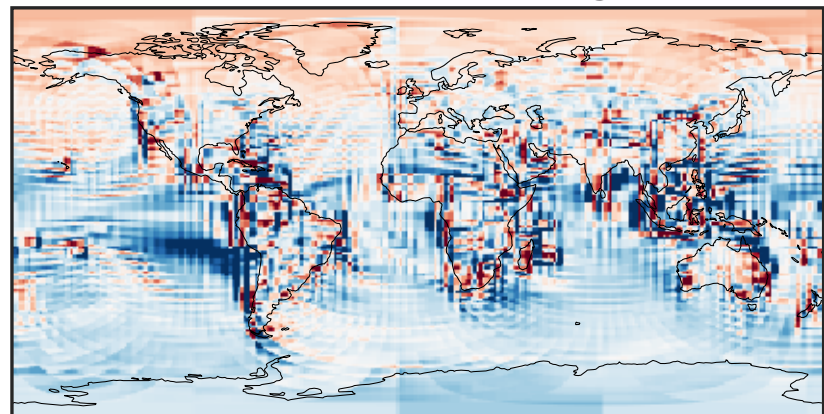
-0.1053 -0.0526 0.0000 0.0526 0.1053  
ppb

Ratio (1x1.25)  
Dev/Ref, Dynamic Range



1e-01 1 10  
unitless

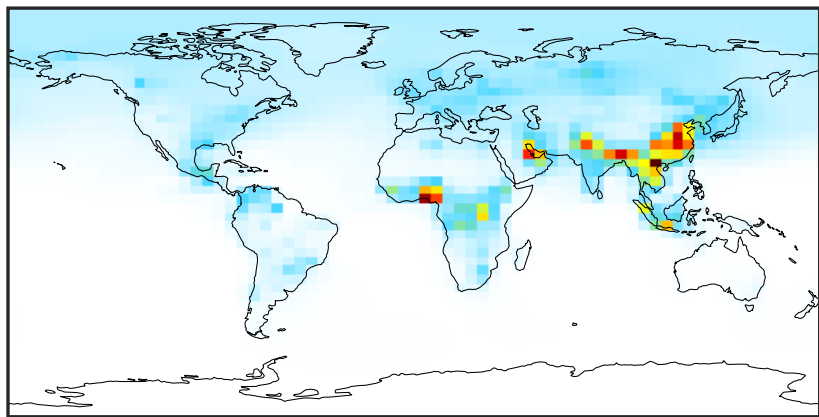
Ratio (1x1.25)  
Dev/Ref, Fixed Range



0.50 0.75 1.00 1.50 2.00  
unitless

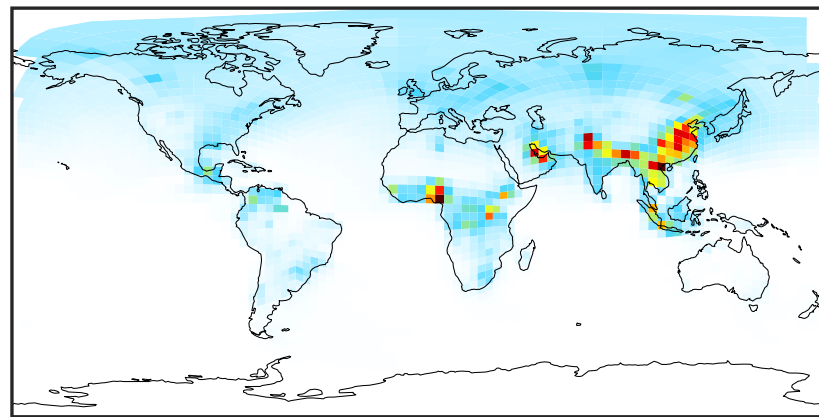
# SpeciesConcVV\_BENZ (Apr2019)

14.3.0-rc.0 (Ref)  
4.0x5.0



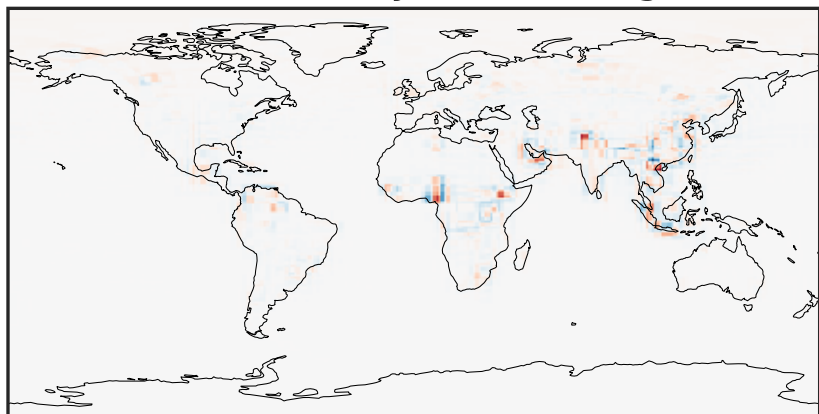
0.0003 0.1560 0.3118 0.4676 0.6234  
ppb

14.3.0-rc.0 (Dev)  
c24



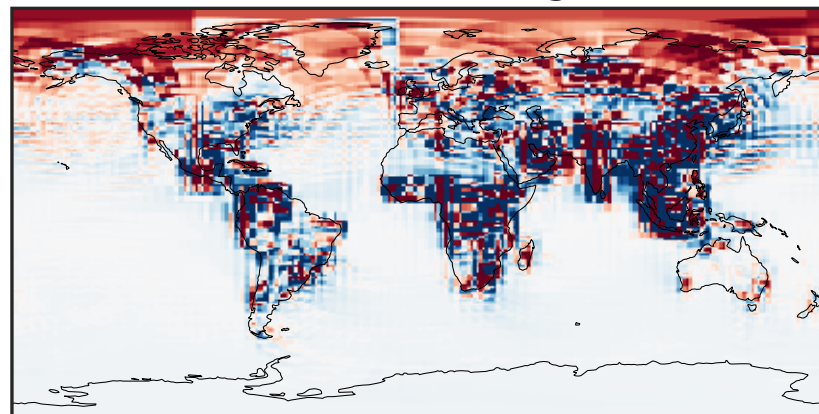
0.0003 0.1560 0.3118 0.4676 0.6234  
ppb

Difference (1x1.25)  
Dev - Ref, Dynamic Range



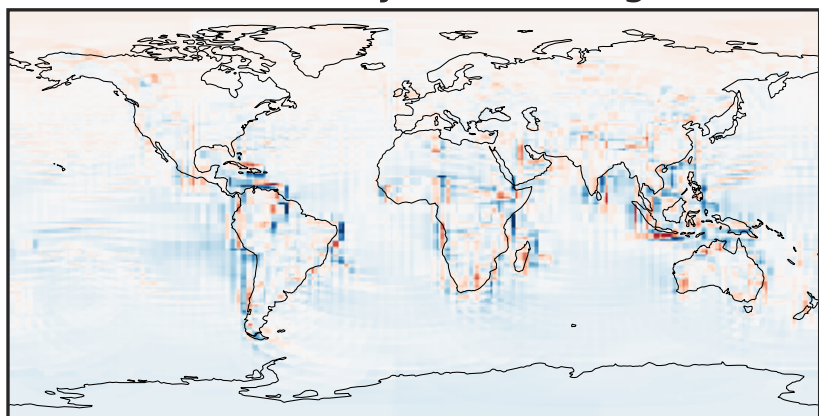
-0.3751 -0.1876 0.0000 0.1876 0.3751  
ppb

Difference (1x1.25)  
Dev - Ref, Restricted Range [5%,95%]



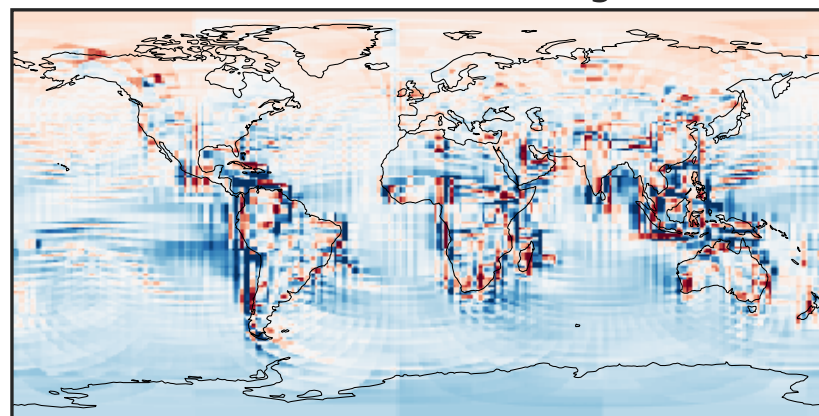
-0.005 0.000 0.005  
ppb

Ratio (1x1.25)  
Dev/Ref, Dynamic Range



0.14 0.57 1.00 4.06 7.12  
unitless

Ratio (1x1.25)  
Dev/Ref, Fixed Range

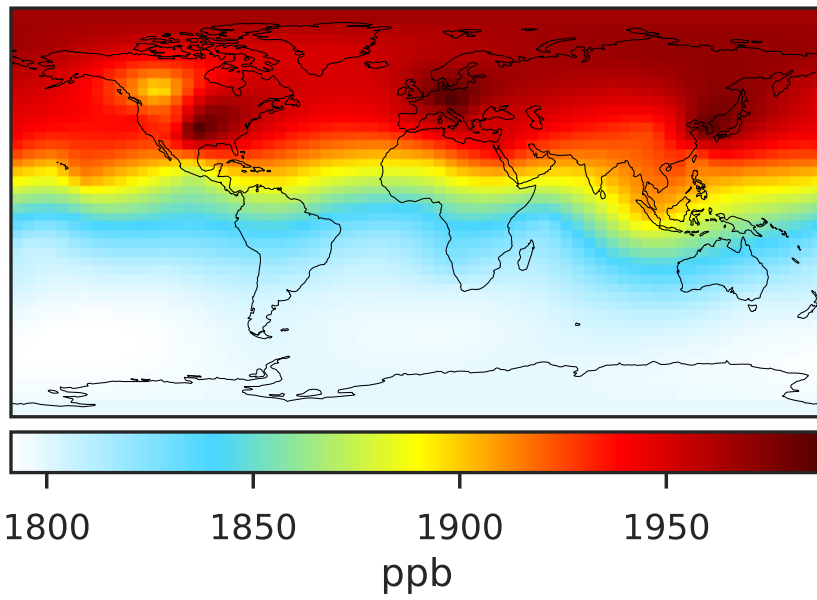


0.50 0.75 1.00 1.50 2.00  
unitless

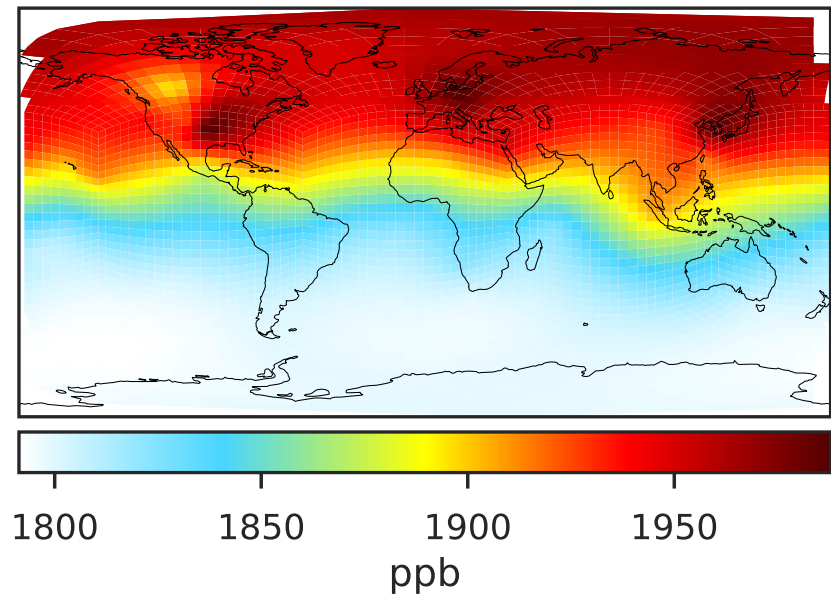


# SpeciesConcVV\_CH4 (Apr2019)

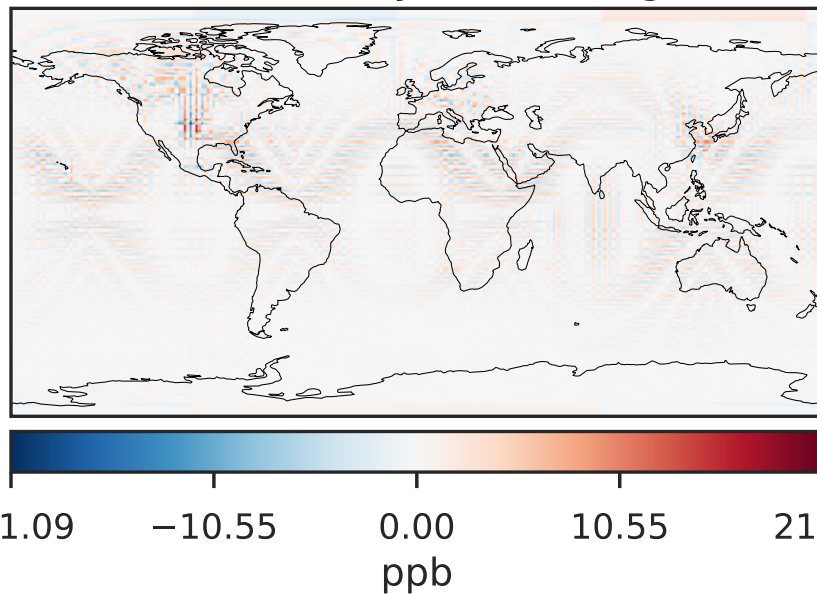
14.3.0-rc.0 (Ref)  
4.0x5.0



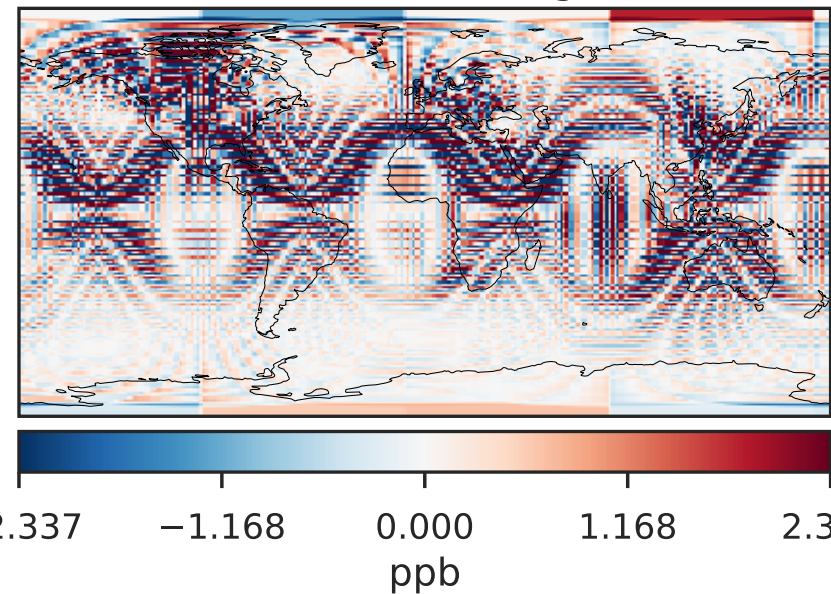
14.3.0-rc.0 (Dev)  
c24



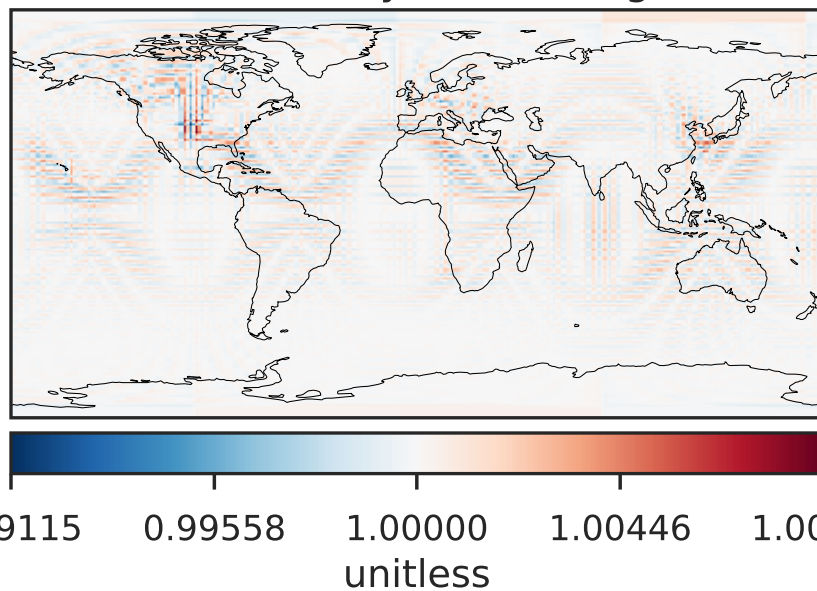
Difference (1x1.25)  
Dev - Ref, Dynamic Range



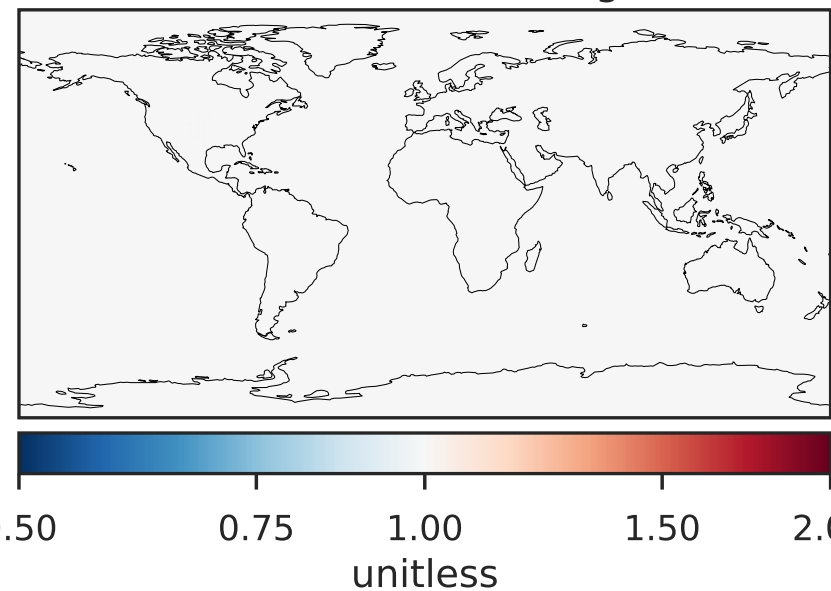
Difference (1x1.25)  
Dev - Ref, Restricted Range [5%,95%]



Ratio (1x1.25)  
Dev/Ref, Dynamic Range

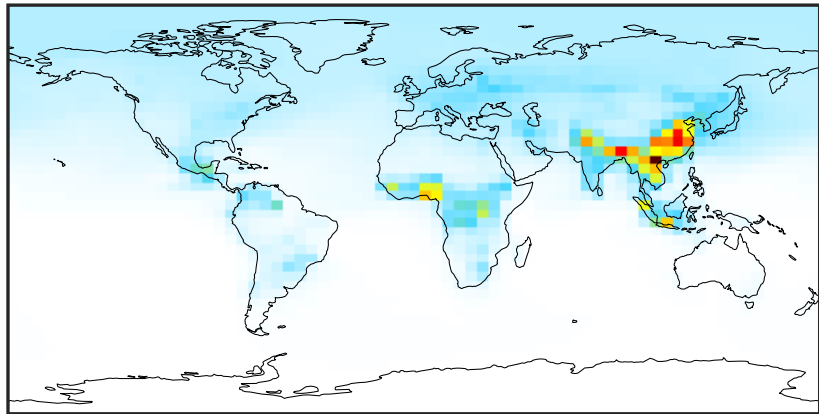


Ratio (1x1.25)  
Dev/Ref, Fixed Range



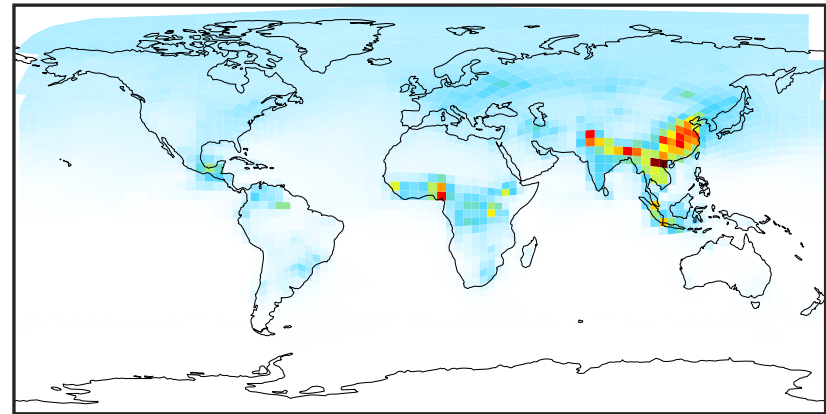
# SpeciesConcVV\_C2H2 (Apr2019)

14.3.0-rc.0 (Ref)  
4.0x5.0



0.003 0.380 0.757 1.134 1.511  
ppb

14.3.0-rc.0 (Dev)  
c24



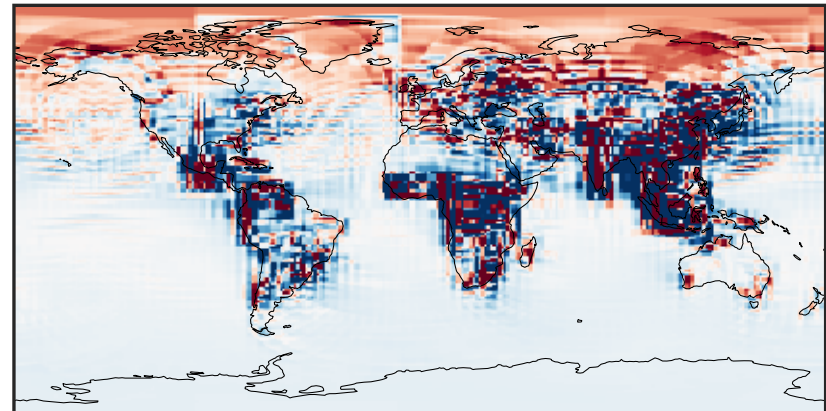
0.003 0.380 0.757 1.134 1.511  
ppb

Difference (1x1.25)  
Dev - Ref, Dynamic Range



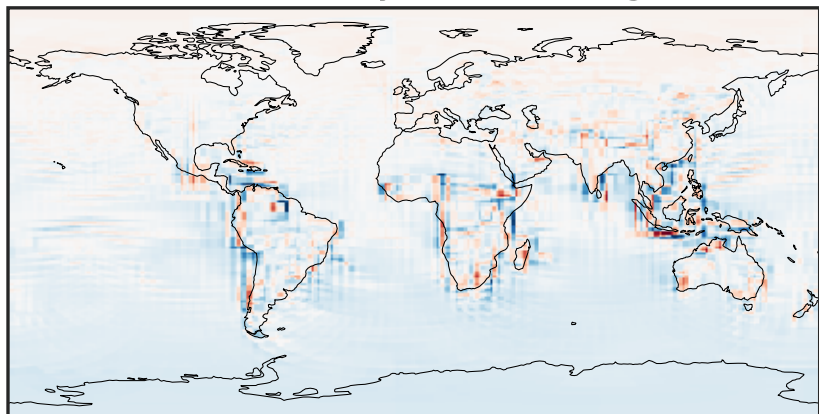
-0.849 -0.425 0.000 0.425 0.849  
ppb

Difference (1x1.25)  
Dev - Ref, Restricted Range [5%,95%]



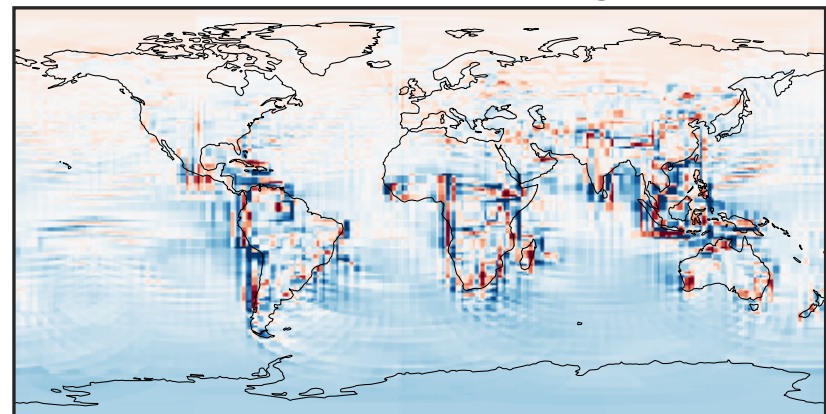
-0.01 0.00 0.01  
ppb

Ratio (1x1.25)  
Dev/Ref, Dynamic Range



0.223 0.611 1.000 2.742 4.484  
unitless

Ratio (1x1.25)  
Dev/Ref, Fixed Range

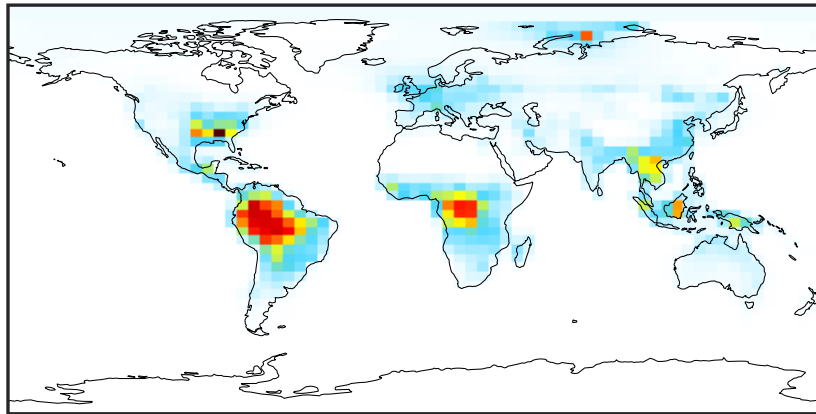


0.50 0.75 1.00 1.50 2.00  
unitless



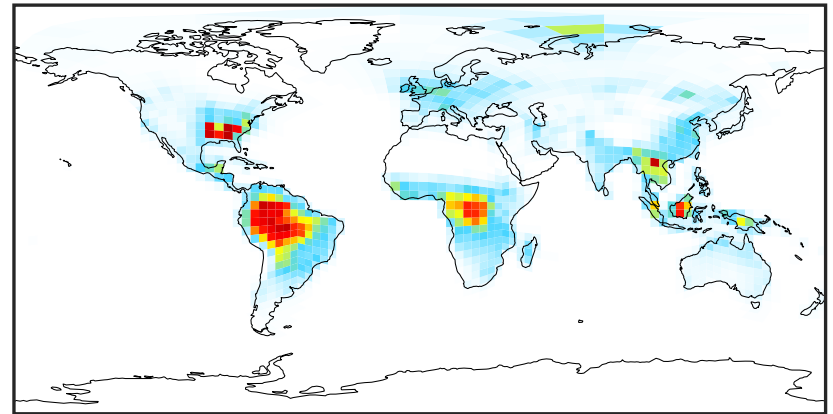
# SpeciesConcVV\_C2H4 (Apr2019)

14.3.0-rc.0 (Ref)  
4.0x5.0



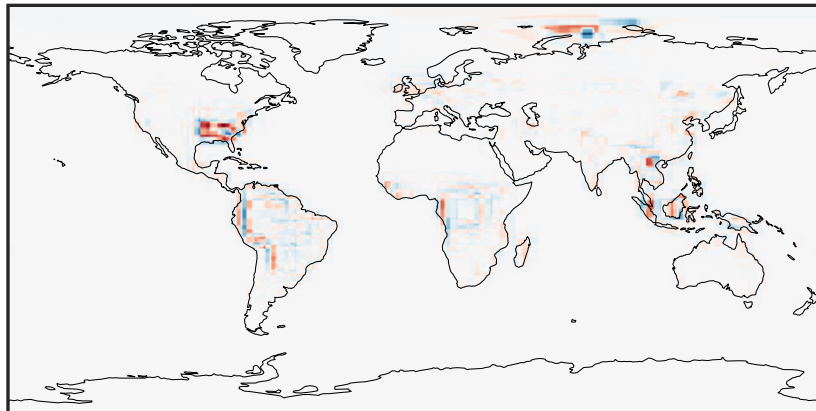
0.000 0.978 1.955 2.933 3.910  
ppb

14.3.0-rc.0 (Dev)  
c24



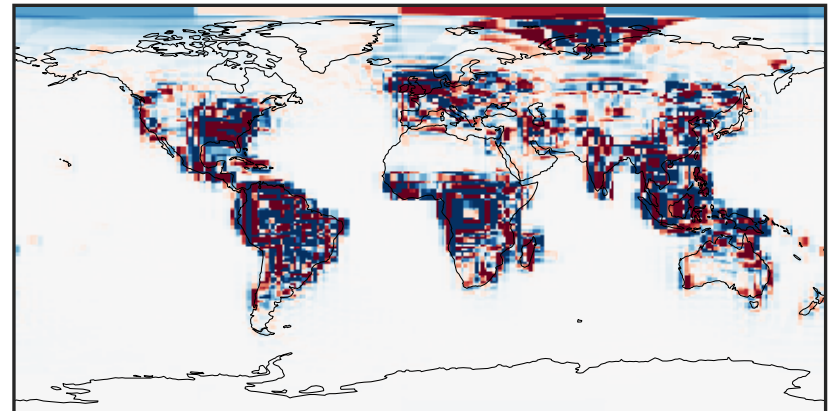
0.000 0.978 1.955 2.933 3.910  
ppb

Difference (1x1.25)  
Dev - Ref, Dynamic Range



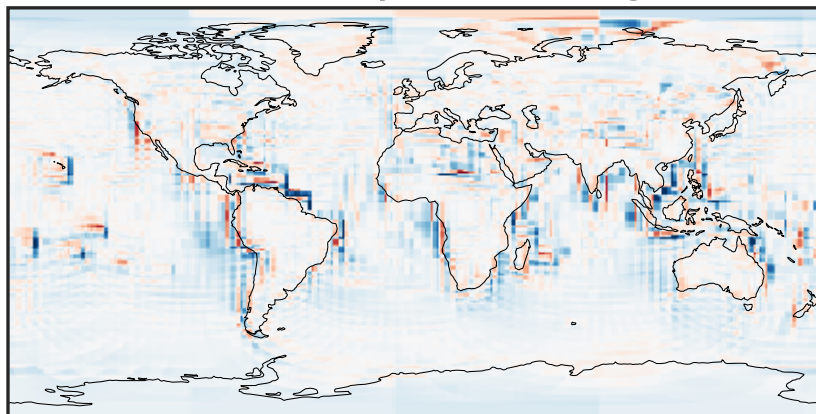
-1.994 -0.997 0.000 0.997 1.994  
ppb

Difference (1x1.25)  
Dev - Ref, Restricted Range [5%,95%]



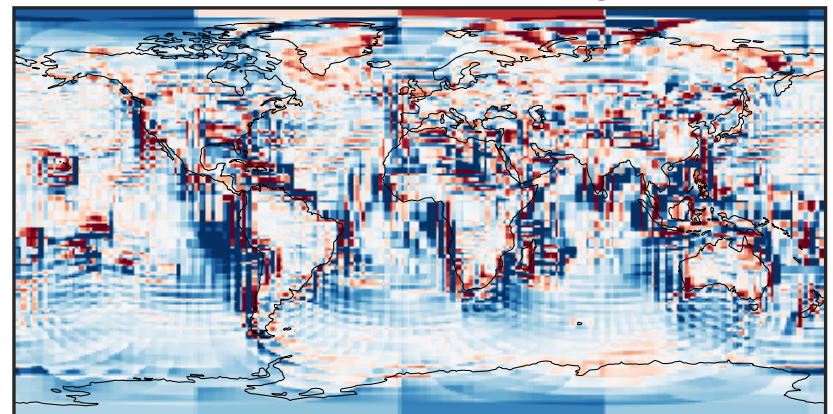
-0.0717 -0.0358 0.0000 0.0358 0.0717  
ppb

Ratio (1x1.25)  
Dev/Ref, Dynamic Range



1e-01 1 10  
unitless

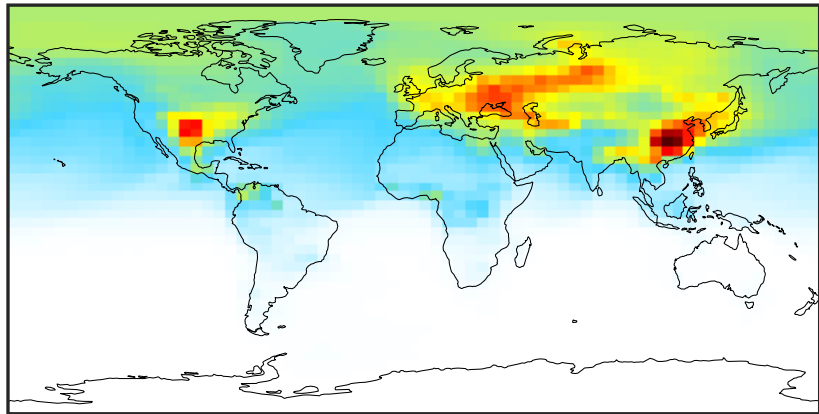
Ratio (1x1.25)  
Dev/Ref, Fixed Range



0.50 0.75 1.00 1.50 2.00  
unitless

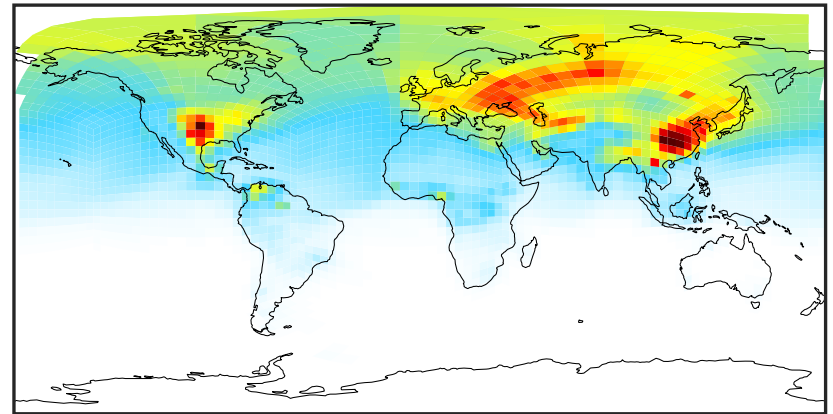
# SpeciesConcVV\_C2H6 (Apr2019)

14.3.0-rc.0 (Ref)  
4.0x5.0



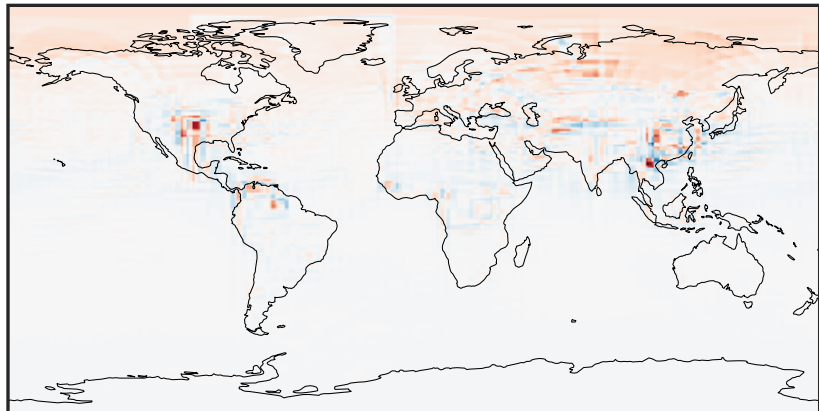
0.057 0.998 1.939 2.881 3.822  
ppb

14.3.0-rc.0 (Dev)  
c24



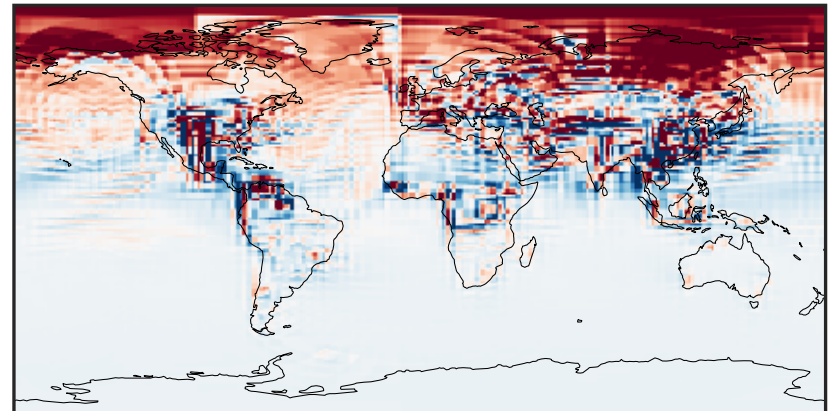
0.057 0.998 1.939 2.881 3.822  
ppb

Difference (1x1.25)  
Dev - Ref, Dynamic Range



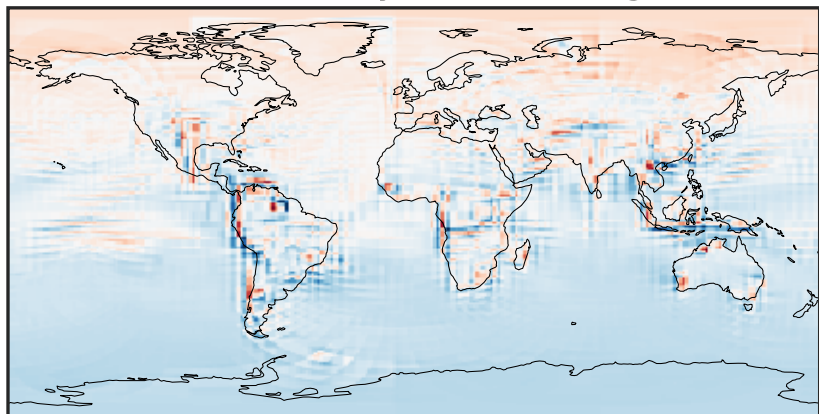
-1.197 -0.599 0.000 0.599 1.197  
ppb

Difference (1x1.25)  
Dev - Ref, Restricted Range [5%,95%]



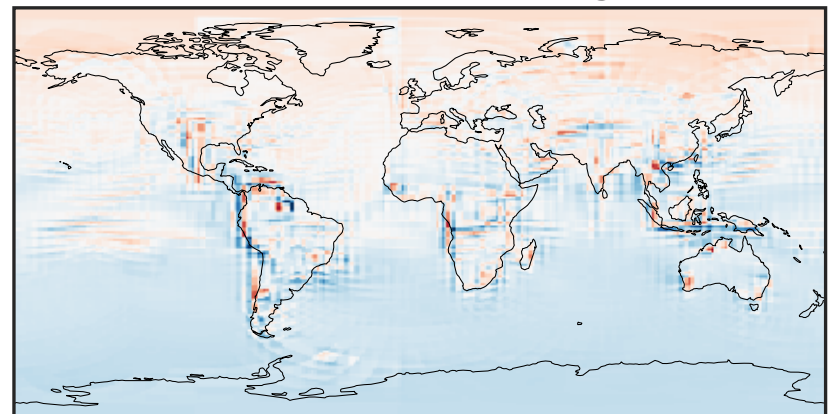
-0.1646 -0.0823 0.0000 0.0823 0.1646  
ppb

Ratio (1x1.25)  
Dev/Ref, Dynamic Range



0.540 0.770 1.000 1.427 1.853  
unitless

Ratio (1x1.25)  
Dev/Ref, Fixed Range

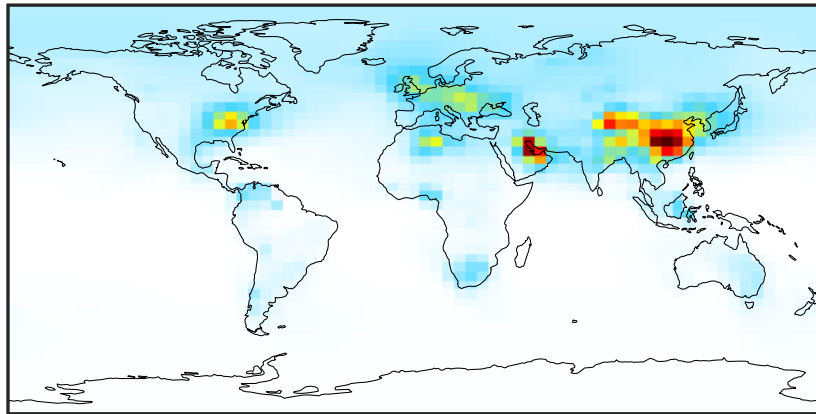


0.50 0.75 1.00 1.50 2.00  
unitless



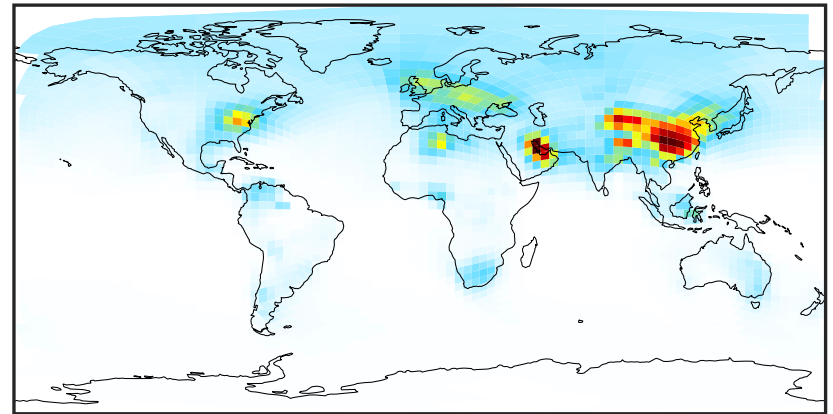
# SpeciesConcVV\_C3H8 (Apr2019)

14.3.0-rc.0 (Ref)  
4.0x5.0



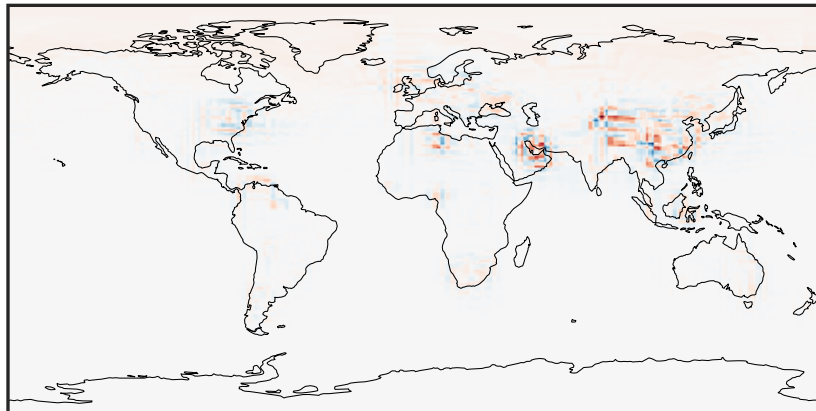
0.001 0.639 1.277 1.915 2.553  
ppb

14.3.0-rc.0 (Dev)  
c24



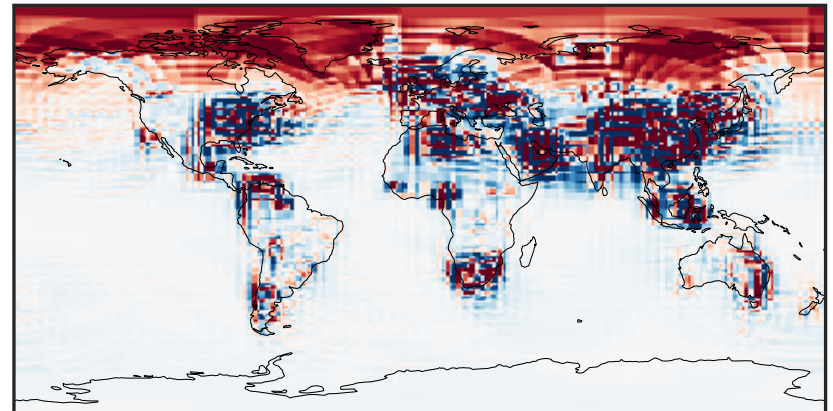
0.001 0.639 1.277 1.915 2.553  
ppb

Difference (1x1.25)  
Dev - Ref, Dynamic Range



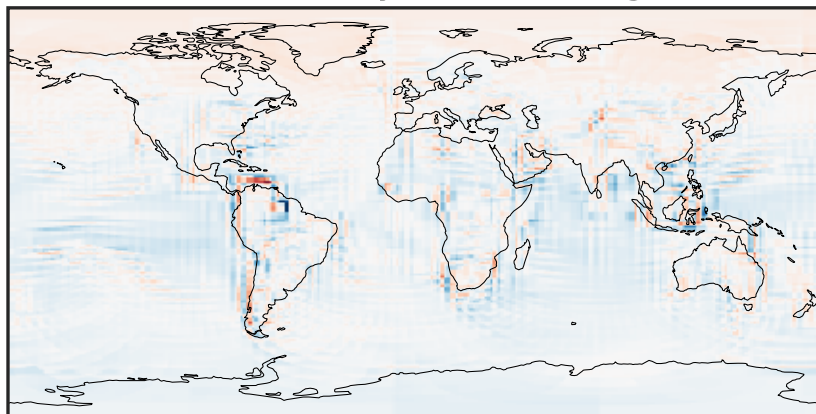
-1.031 -0.515 0.000 0.515 1.031  
ppb

Difference (1x1.25)  
Dev - Ref, Restricted Range [5%,95%]



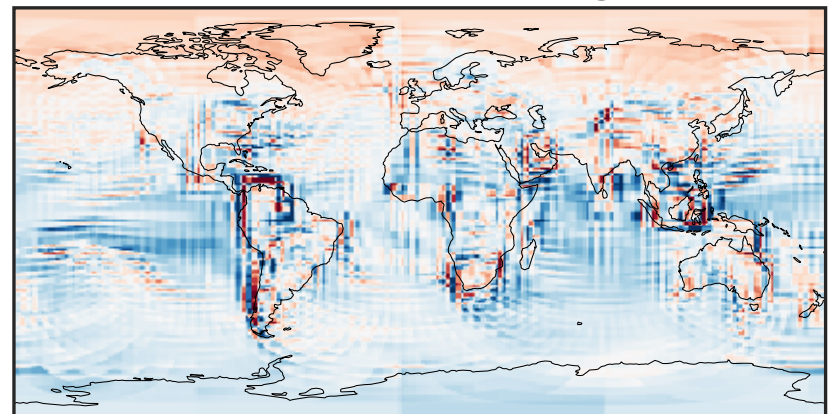
-0.025 0.000 0.025  
ppb

Ratio (1x1.25)  
Dev/Ref, Dynamic Range



0.141 0.571 1.000 4.039 7.078  
unitless

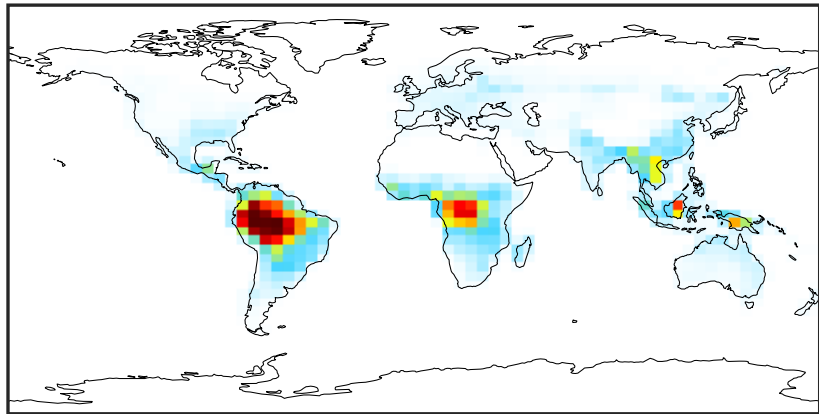
Ratio (1x1.25)  
Dev/Ref, Fixed Range



0.50 0.75 1.00 1.50 2.00  
unitless

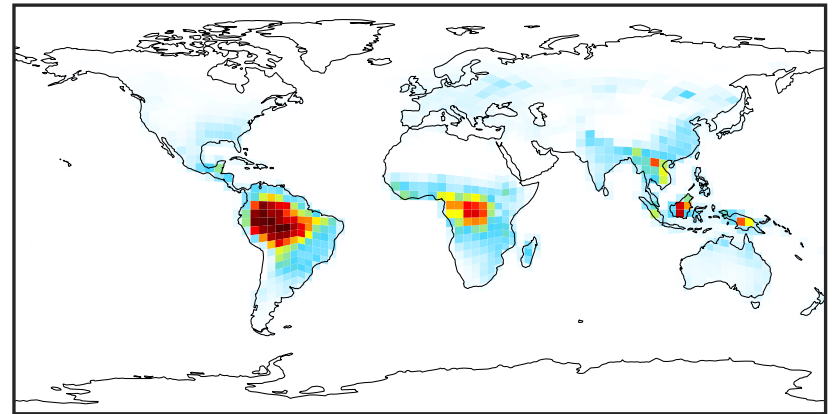
# SpeciesConcVV\_PRPE (Apr2019)

14.3.0-rc.0 (Ref)  
4.0x5.0



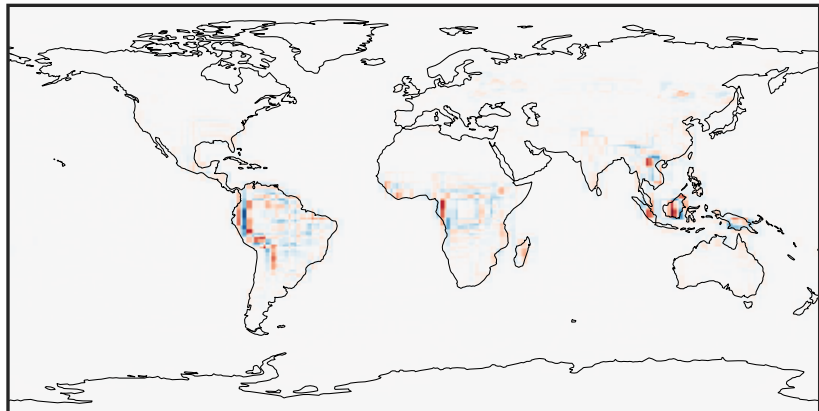
0.000 0.551 1.101 1.652 2.202  
ppb

14.3.0-rc.0 (Dev)  
c24



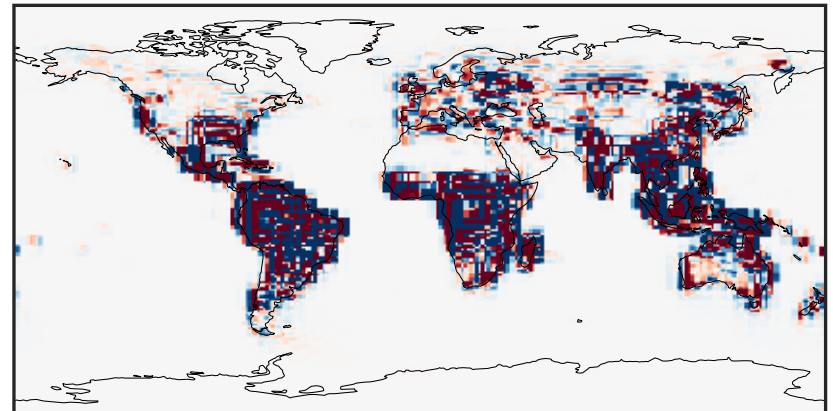
0.000 0.551 1.101 1.652 2.202  
ppb

Difference (1x1.25)  
Dev - Ref, Dynamic Range



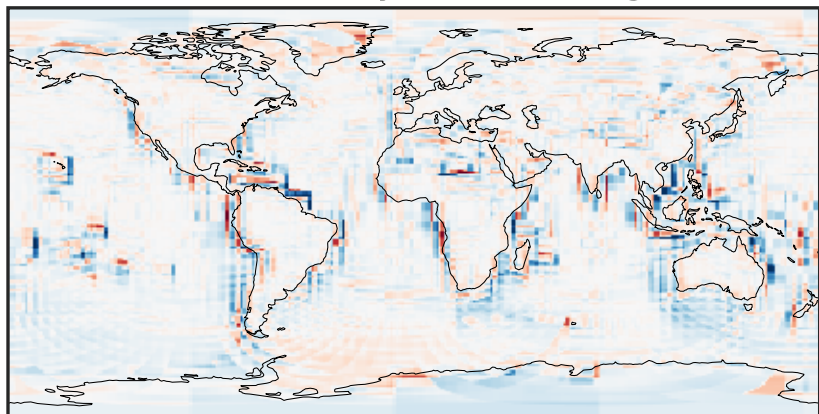
-1.058 -0.529 0.000 0.529 1.058  
ppb

Difference (1x1.25)  
Dev - Ref, Restricted Range [5%,95%]



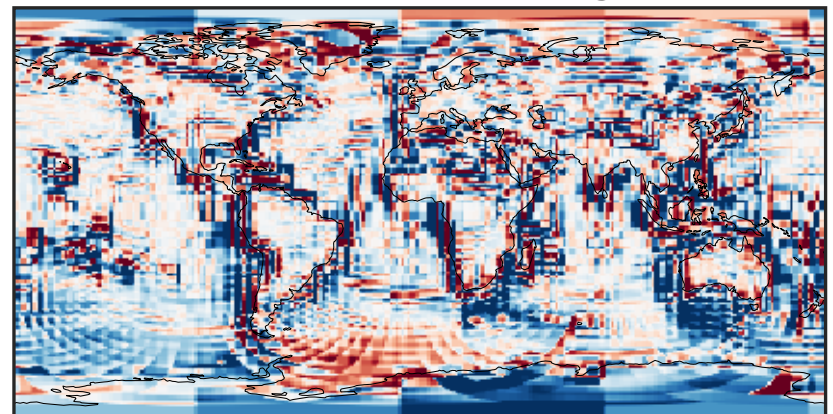
-0.015 0.000 0.015  
ppb

Ratio (1x1.25)  
Dev/Ref, Dynamic Range



1e-01 1 10  
unitless

Ratio (1x1.25)  
Dev/Ref, Fixed Range

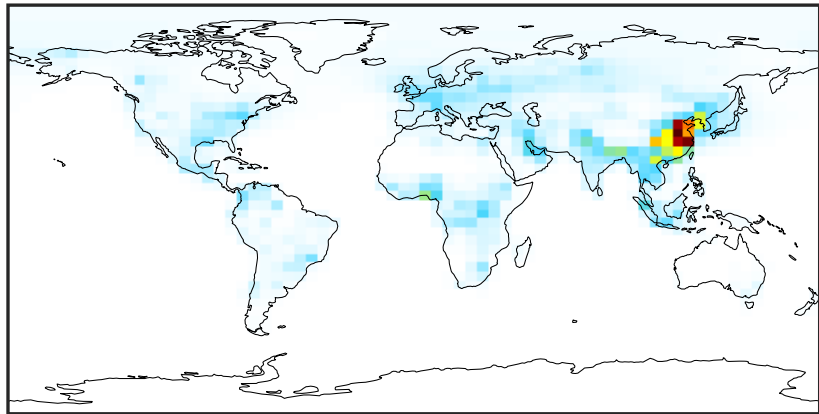


0.50 0.75 1.00 1.50 2.00  
unitless



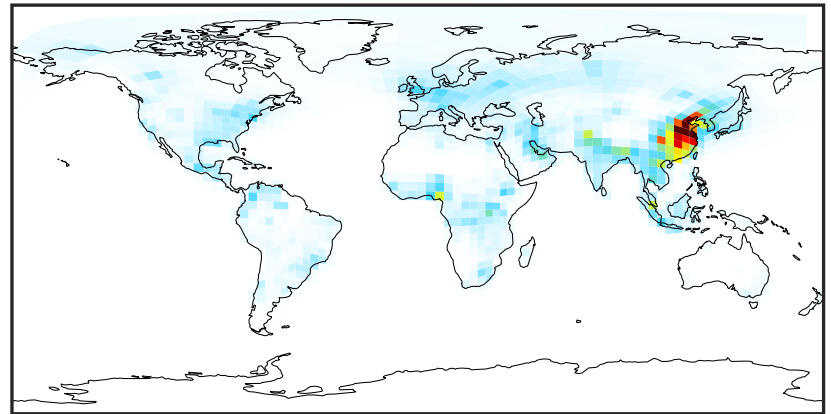
# SpeciesConcVV\_TOLU (Apr2019)

14.3.0-rc.0 (Ref)  
4.0x5.0



0.0000 0.1573 0.3145 0.4718 0.6291  
ppb

14.3.0-rc.0 (Dev)  
c24



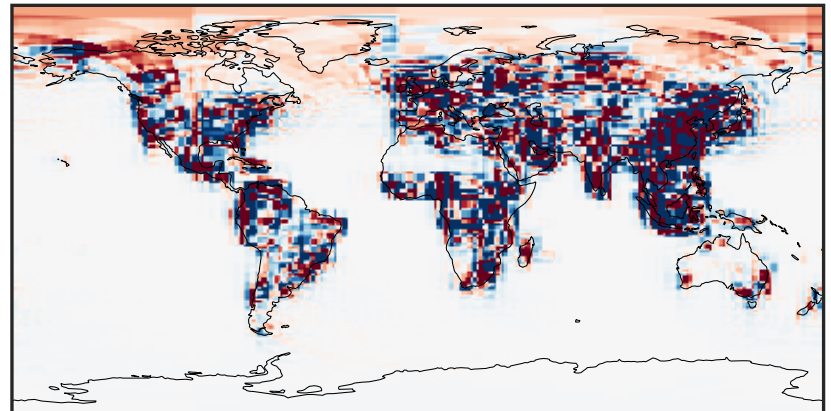
0.0000 0.1573 0.3145 0.4718 0.6291  
ppb

Difference (1x1.25)  
Dev - Ref, Dynamic Range



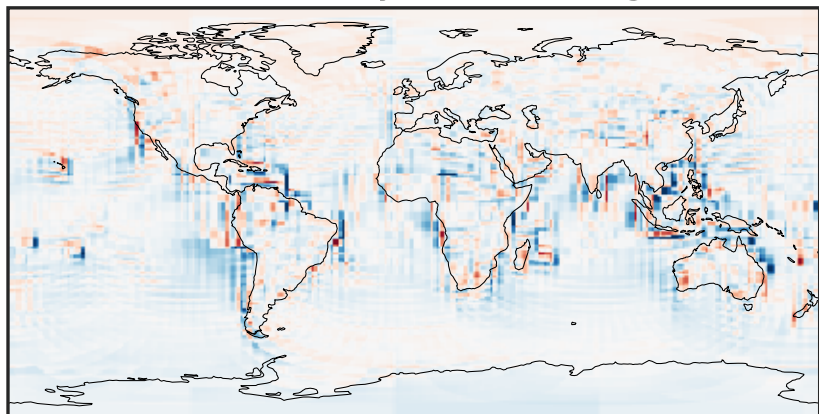
-0.3852 -0.1926 0.0000 0.1926 0.3852  
ppb

Difference (1x1.25)  
Dev - Ref, Restricted Range [5%,95%]



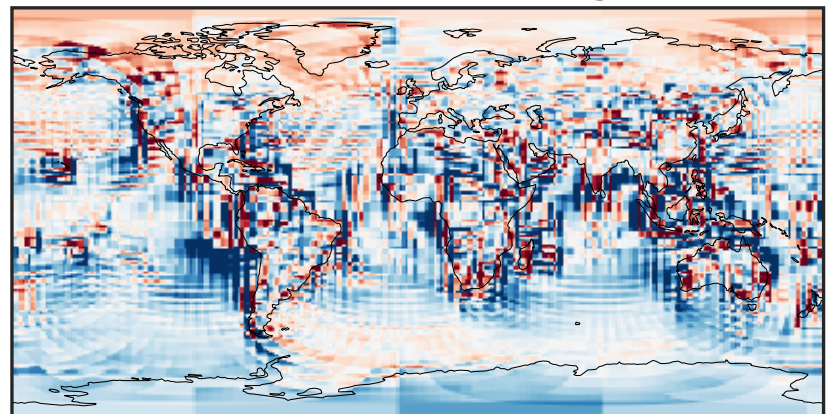
-0.004 0.000 0.004  
ppb

Ratio (1x1.25)  
Dev/Ref, Dynamic Range



1e-01 1 10  
unitless

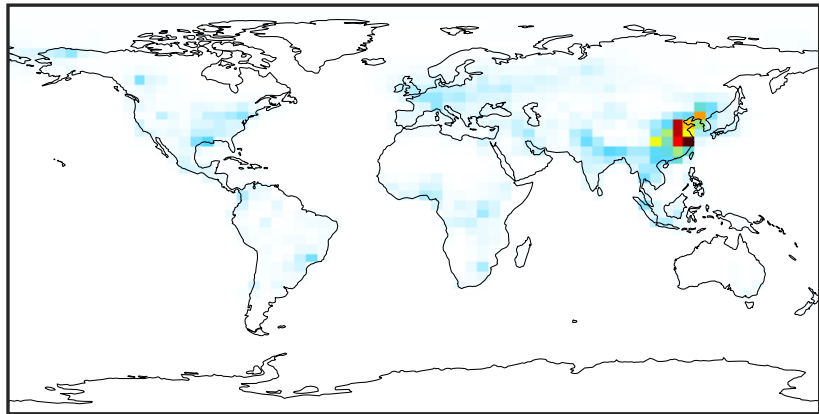
Ratio (1x1.25)  
Dev/Ref, Fixed Range



0.50 0.75 1.00 1.50 2.00  
unitless

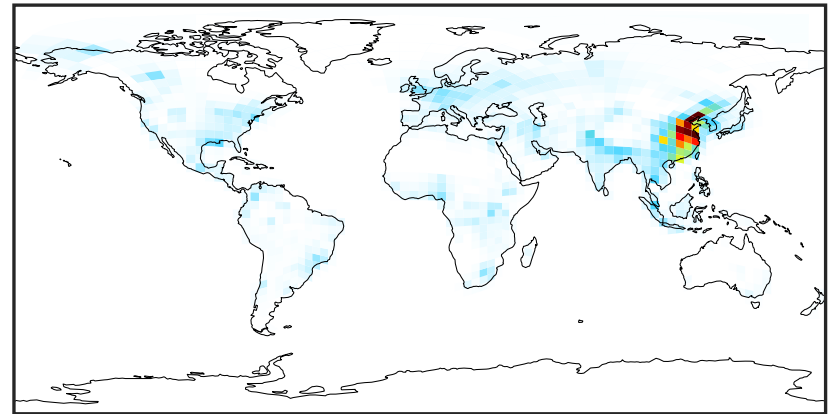
# SpeciesConcVV\_XYLE (Apr2019)

14.3.0-rc.0 (Ref)  
4.0x5.0



0.0000 0.1414 0.2828 0.4242 0.5655  
ppb

14.3.0-rc.0 (Dev)  
c24



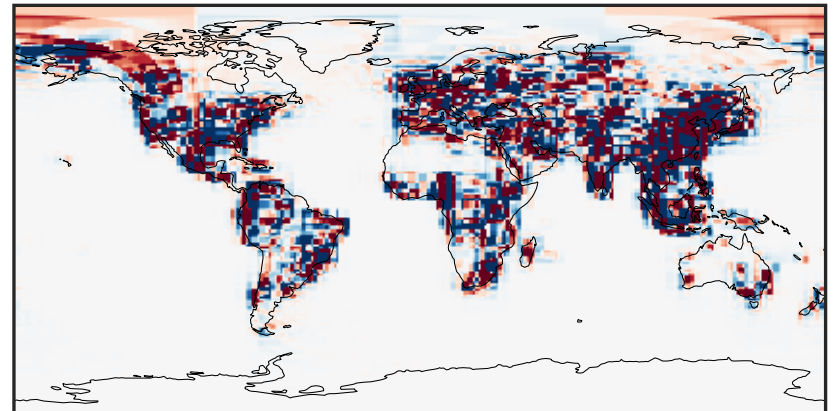
0.0000 0.1414 0.2828 0.4242 0.5655  
ppb

Difference (1x1.25)  
Dev - Ref, Dynamic Range



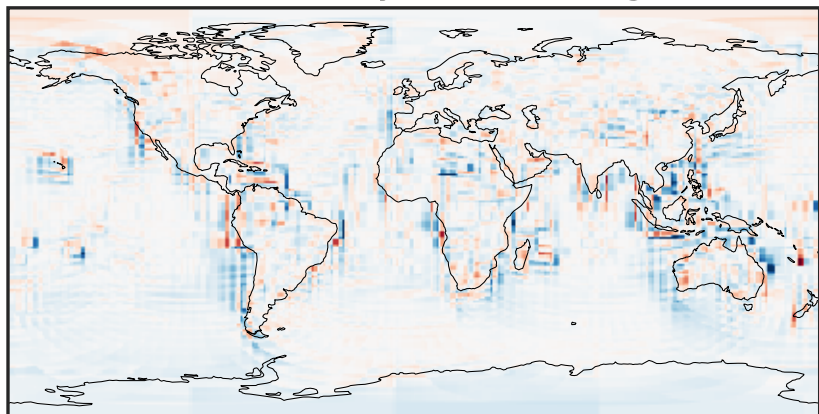
-0.4985 -0.2492 0.0000 0.2492 0.4985  
ppb

Difference (1x1.25)  
Dev - Ref, Restricted Range [5%,95%]



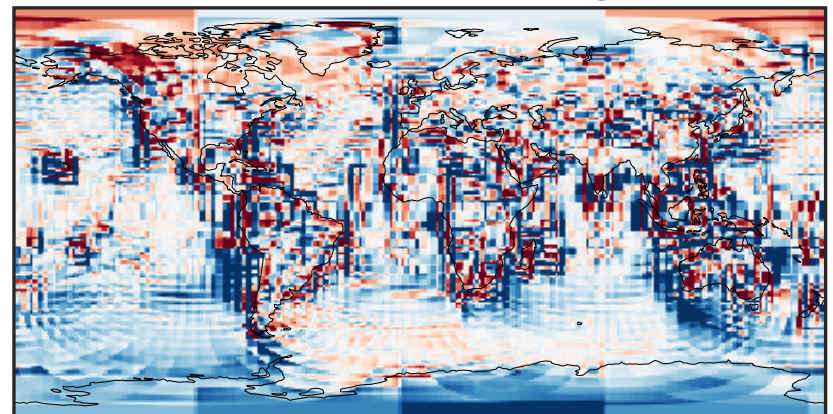
-0.002 0.000 0.002  
ppb

Ratio (1x1.25)  
Dev/Ref, Dynamic Range



1e-01 1 10  
unitless

Ratio (1x1.25)  
Dev/Ref, Fixed Range



0.50 0.75 1.00 1.50 2.00  
unitless