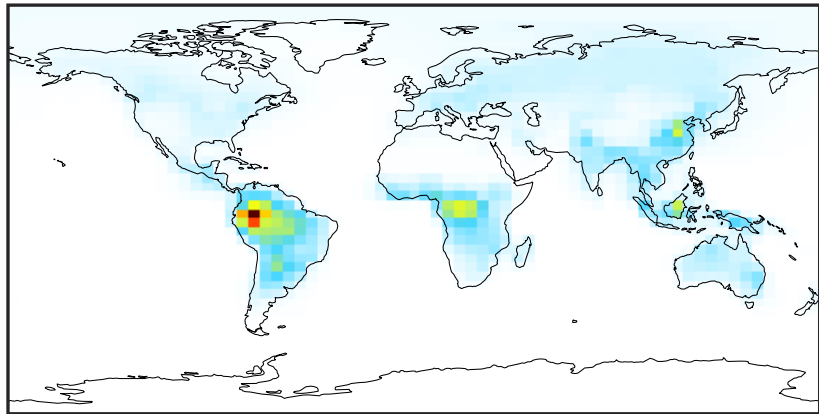


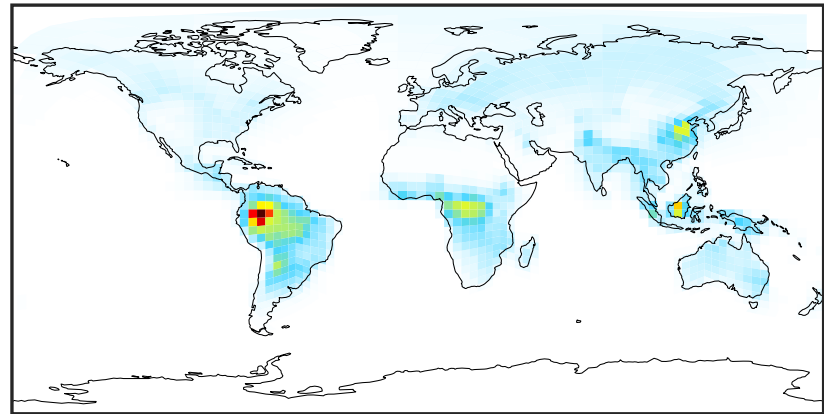
SpeciesConcVV_EOH (Jan2019)

14.3.0-rc.0 (Ref)
4.0x5.0



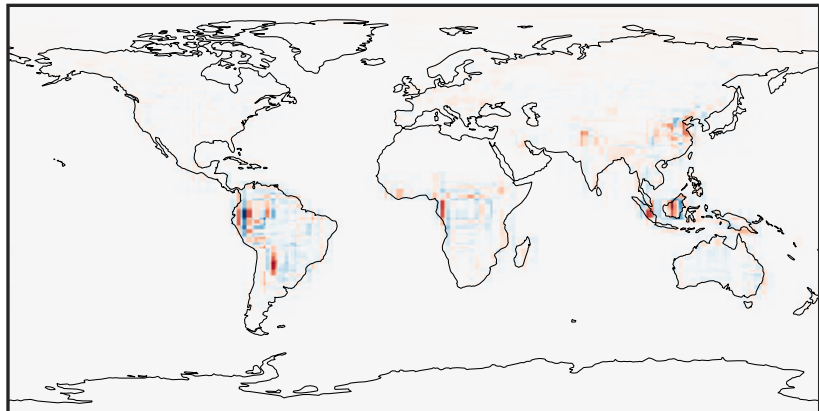
0.000 0.816 1.632 2.448 3.264
ppb

14.3.0-rc.0 (Dev)
c24



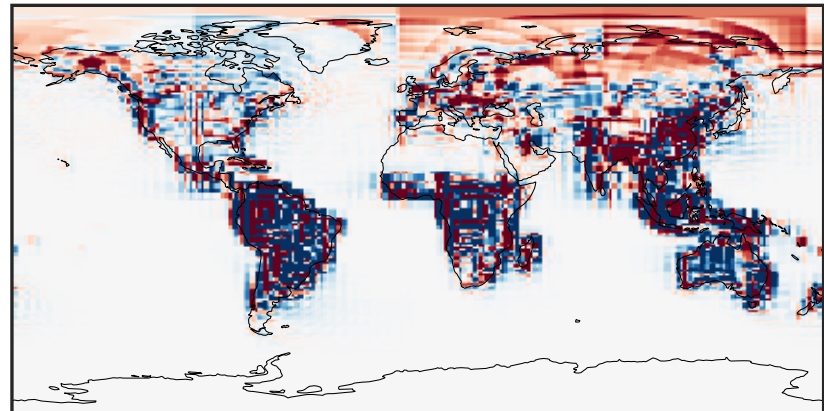
0.000 0.816 1.632 2.448 3.264
ppb

Difference (1x1.25)
Dev - Ref, Dynamic Range



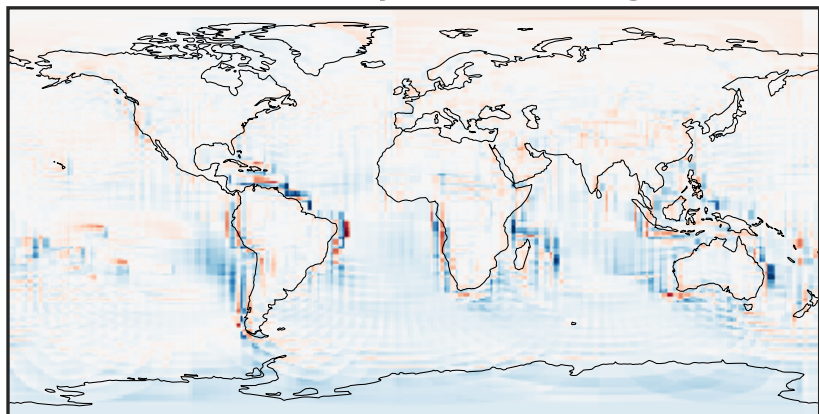
-0.893 -0.447 0.000 0.447 0.893
ppb

Difference (1x1.25)
Dev - Ref, Restricted Range [5%,95%]



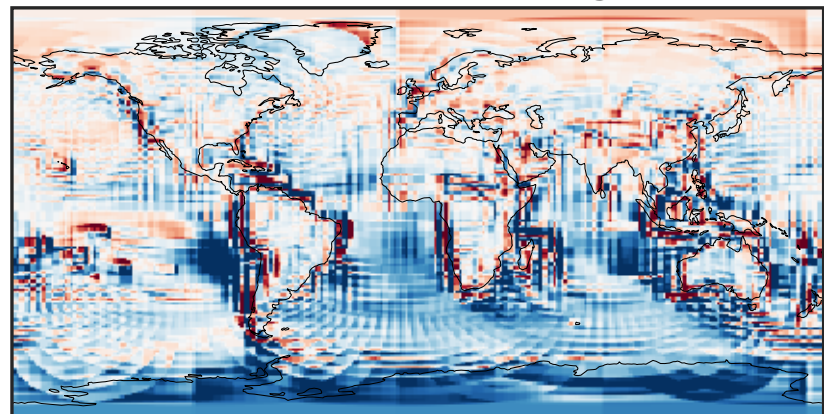
-0.02 0.00 0.02
ppb

Ratio (1x1.25)
Dev/Ref, Dynamic Range



1e-01 1 10
unitless

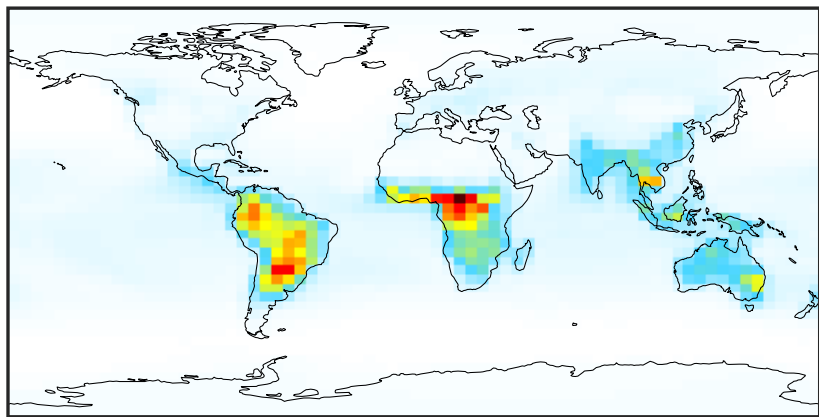
Ratio (1x1.25)
Dev/Ref, Fixed Range



0.50 0.75 1.00 1.50 2.00
unitless

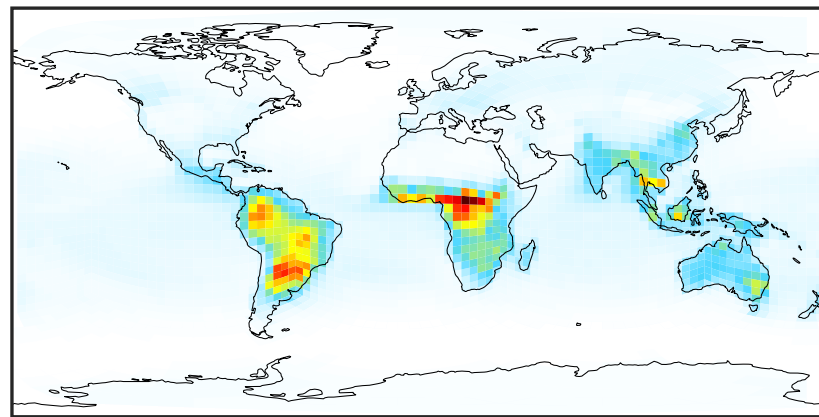
SpeciesConcVW_MOH (Jan2019)

14.3.0-rc.0 (Ref)
4.0x5.0



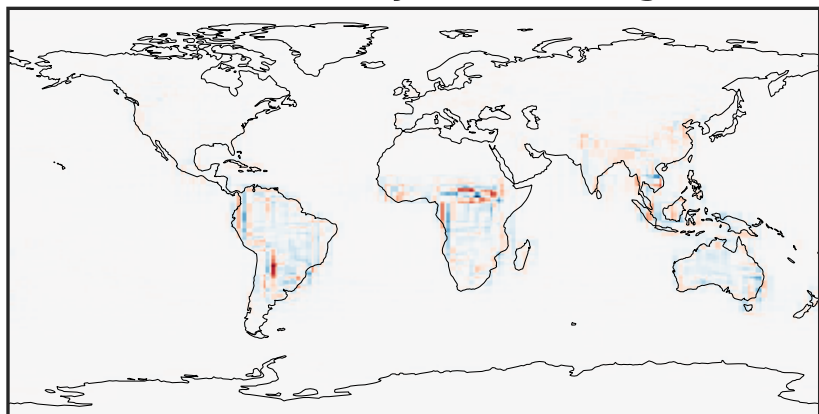
0.032 2.333 4.633 6.933 9.234
ppb

14.3.0-rc.0 (Dev)
c24



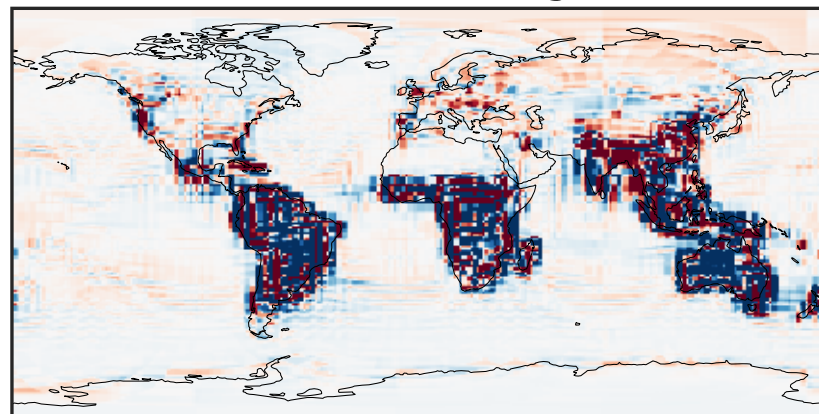
0.032 2.333 4.633 6.933 9.234
ppb

Difference (1x1.25)
Dev - Ref, Dynamic Range



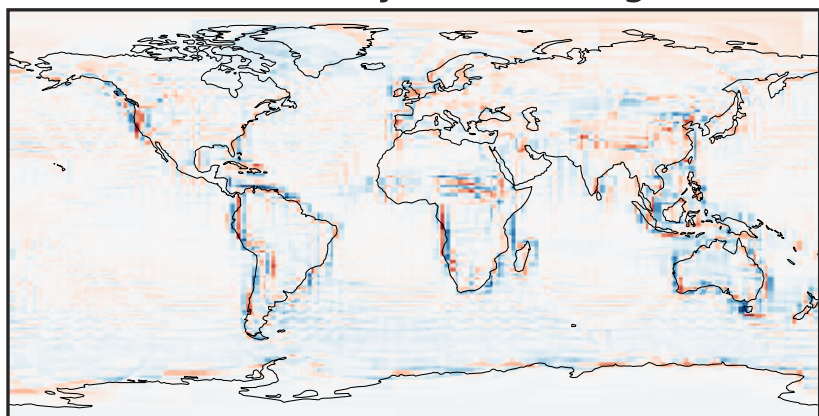
-3.76 -1.88 0.00 1.88 3.76
ppb

Difference (1x1.25)
Dev - Ref, Restricted Range [5%,95%]



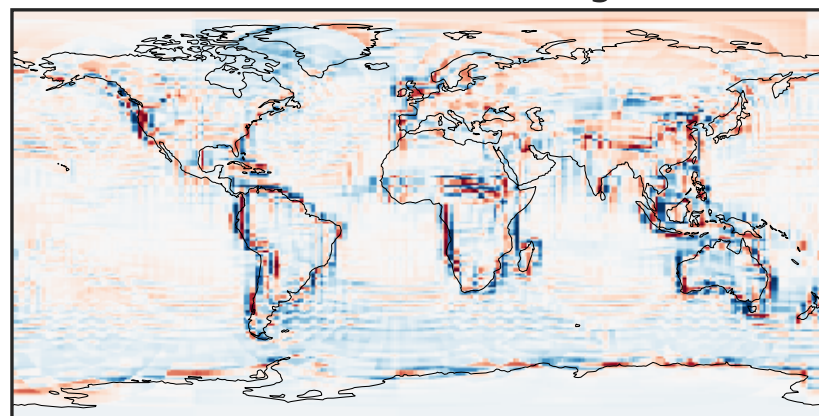
-0.1572 -0.0786 0.0000 0.0786 0.1572
ppb

Ratio (1x1.25)
Dev/Ref, Dynamic Range



0.290 0.645 1.000 2.225 3.450
unitless

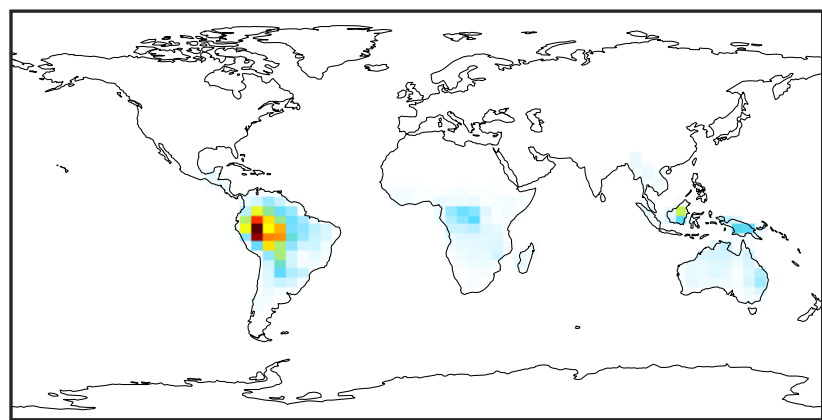
Ratio (1x1.25)
Dev/Ref, Fixed Range



0.50 0.75 1.00 1.50 2.00
unitless

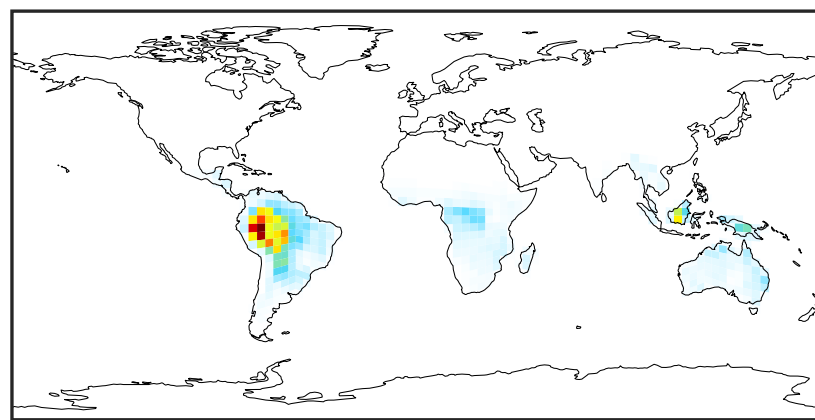
SpeciesConcVV_ISOP (Jan2019)

14.3.0-rc.0 (Ref)
4.0x5.0



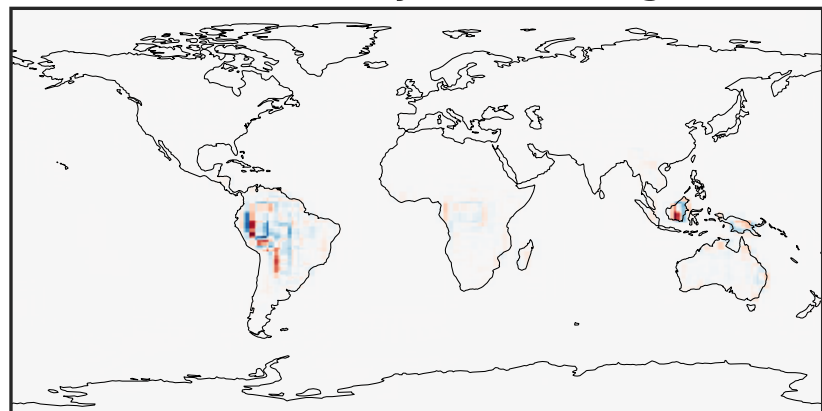
0.00 2.67 5.34 8.01 10.68
ppb

14.3.0-rc.0 (Dev)
c24



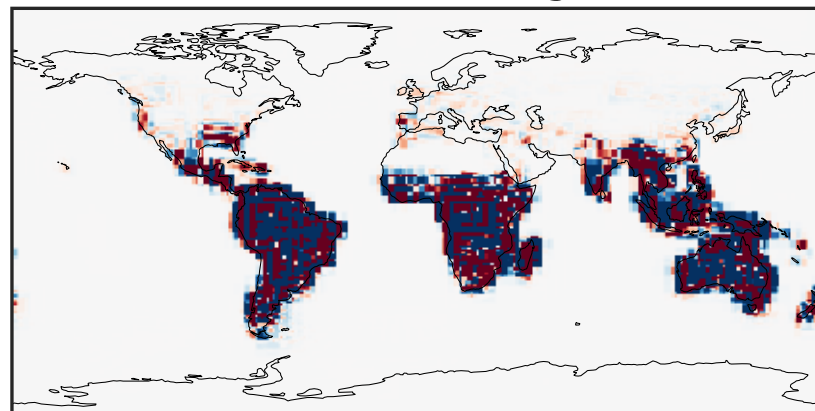
0.00 2.67 5.34 8.01 10.68
ppb

Difference (1x1.25)
Dev - Ref, Dynamic Range



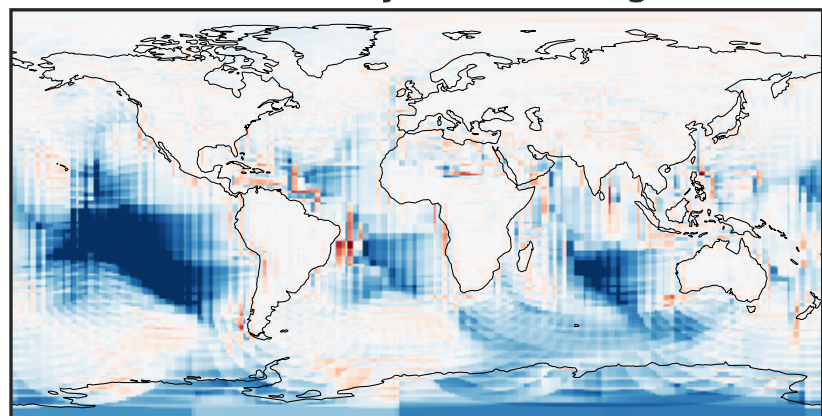
-4.02 -2.01 0.00 2.01 4.02
ppb

Difference (1x1.25)
Dev - Ref, Restricted Range [5%,95%]



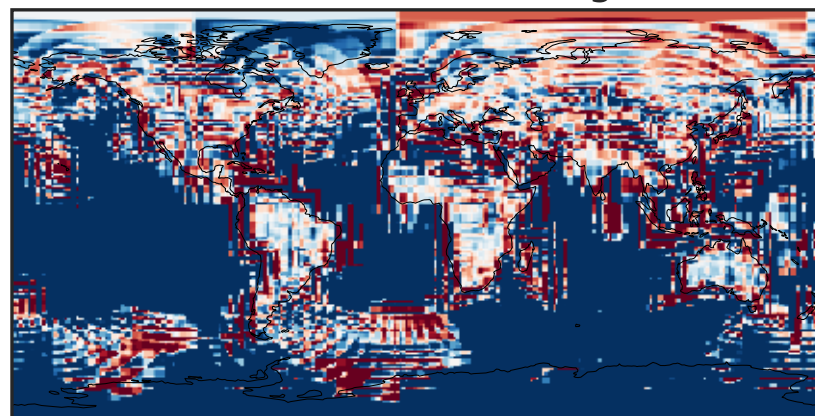
-0.004 0.000 0.004
ppb

Ratio (1x1.25)
Dev/Ref, Dynamic Range



unitless

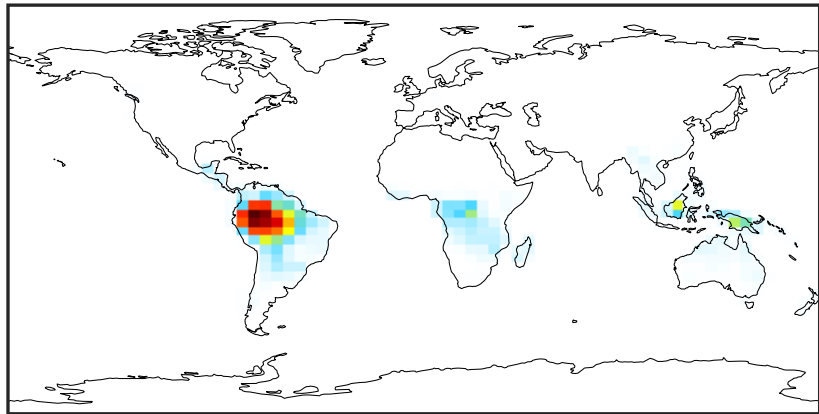
Ratio (1x1.25)
Dev/Ref, Fixed Range



0.50 0.75 1.00 1.50 2.00
unitless

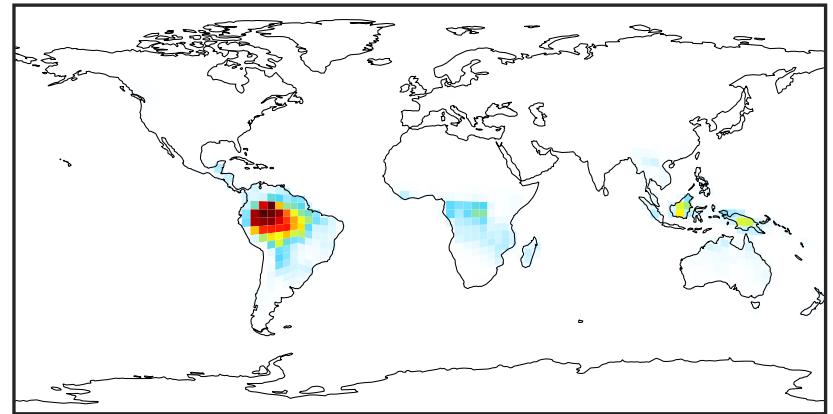
SpeciesConcVV_MTPA (Jan2019)

14.3.0-rc.0 (Ref)
4.0x5.0



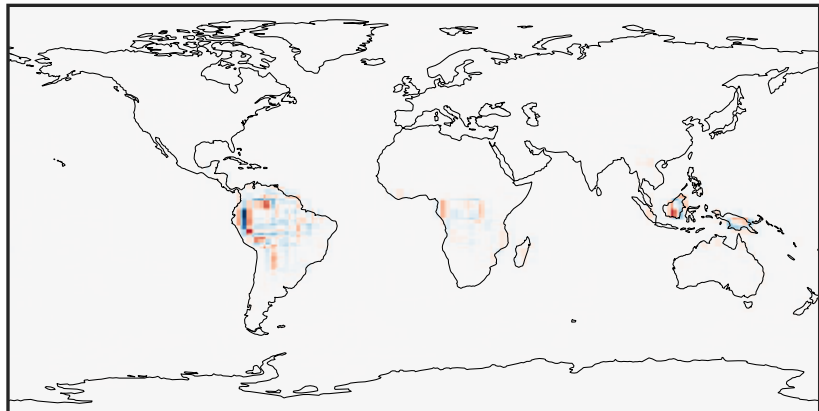
0.000 0.496 0.992 1.487 1.983
ppb

14.3.0-rc.0 (Dev)
c24



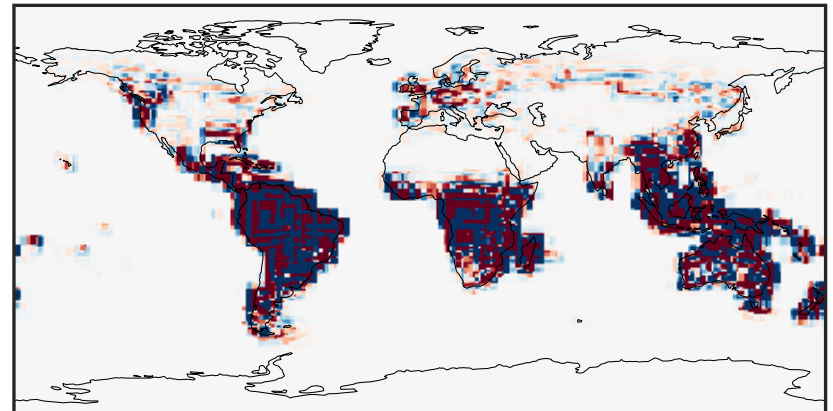
0.000 0.496 0.992 1.487 1.983
ppb

Difference (1x1.25)
Dev - Ref, Dynamic Range



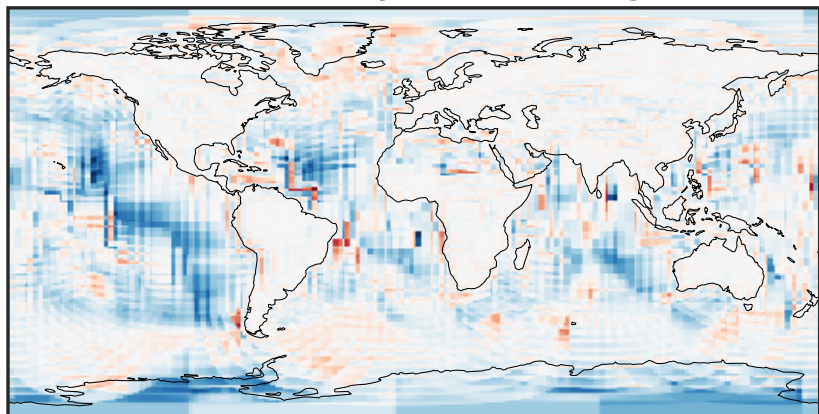
-0.88 -0.44 0.00 0.44 0.88
ppb

Difference (1x1.25)
Dev - Ref, Restricted Range [5%,95%]



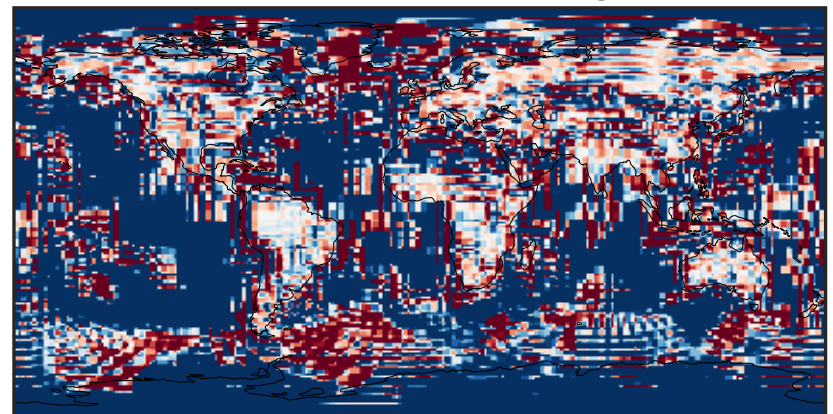
-0.0015 0.0000 0.0015
ppb

Ratio (1x1.25)
Dev/Ref, Dynamic Range



unitless

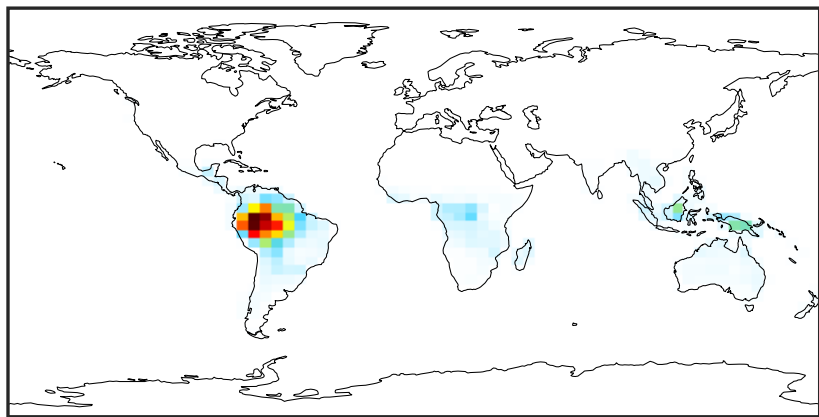
Ratio (1x1.25)
Dev/Ref, Fixed Range



0.50 0.75 1.00 1.50 2.00
unitless

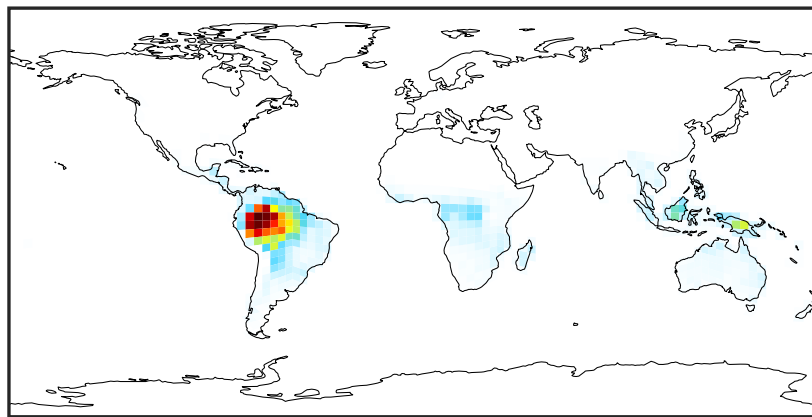
SpeciesConcVV_MTPO (Jan2019)

14.3.0-rc.0 (Ref)
4.0x5.0



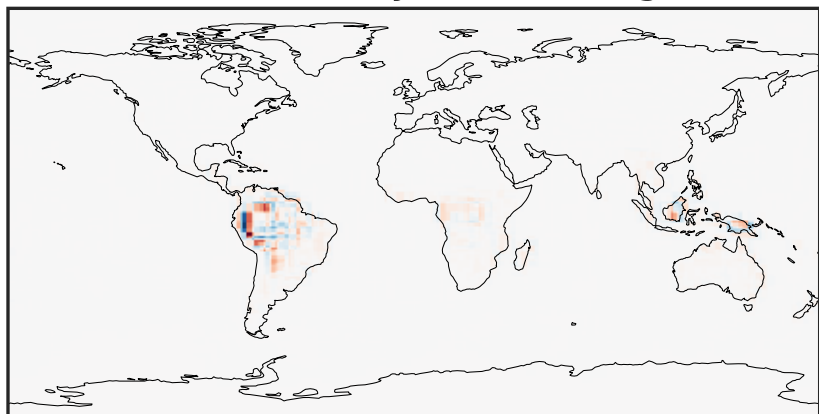
0.0000 0.0312 0.0624 0.0936 0.1248
ppb

14.3.0-rc.0 (Dev)
c24



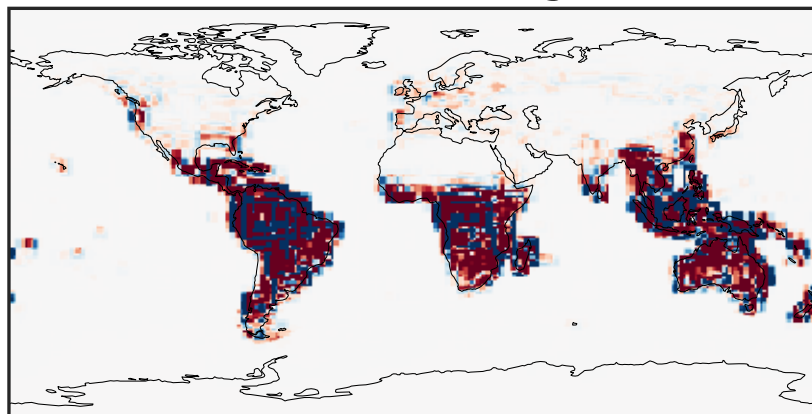
0.0000 0.0312 0.0624 0.0936 0.1248
ppb

Difference (1x1.25)
Dev - Ref, Dynamic Range



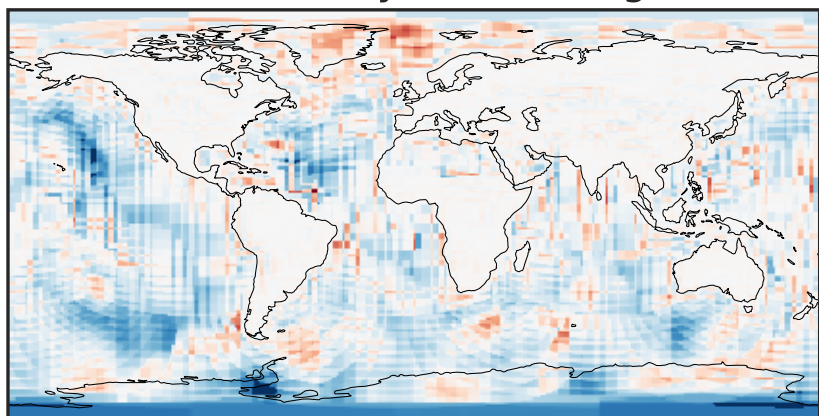
-0.0525 -0.0263 0.0000 0.0263 0.0525
ppb

Difference (1x1.25)
Dev - Ref, Restricted Range [5%,95%]



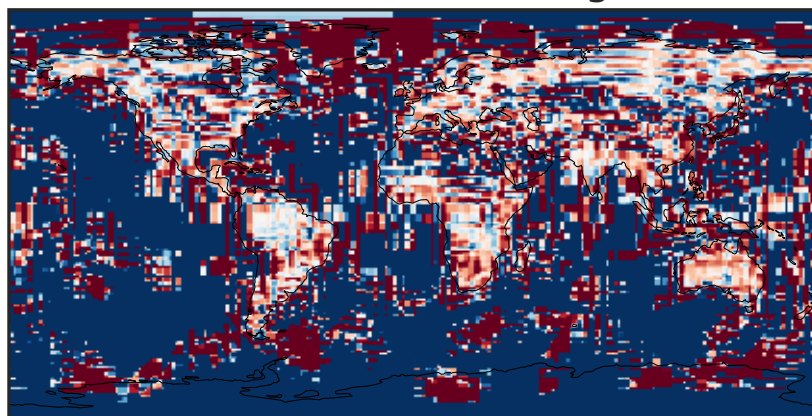
-0.0002 0.0000 0.0002
ppb

Ratio (1x1.25)
Dev/Ref, Dynamic Range



1e-07 1e-04 1e-01 100 1e+05 1e+08
unitless

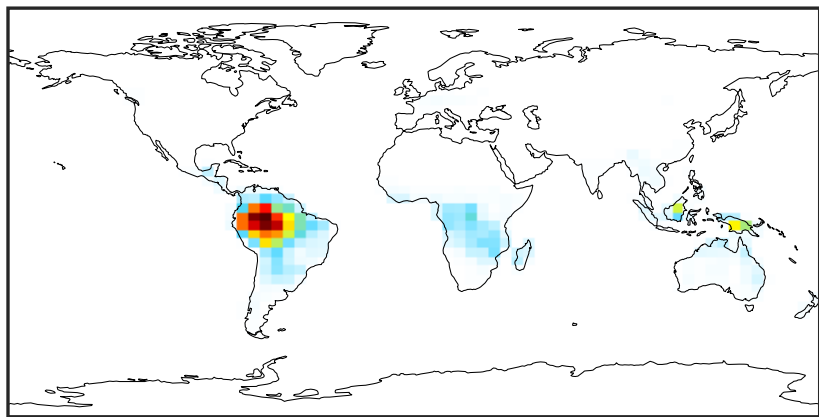
Ratio (1x1.25)
Dev/Ref, Fixed Range



0.50 0.75 1.00 1.50 2.00
unitless

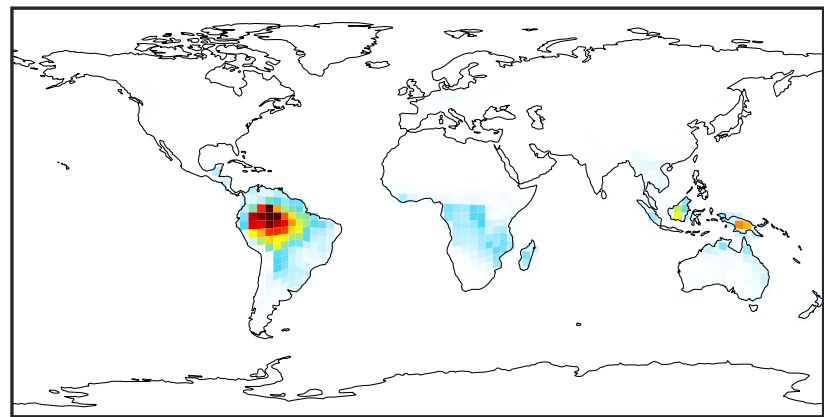
SpeciesConcVV_LIMO (Jan2019)

14.3.0-rc.0 (Ref)
4.0x5.0



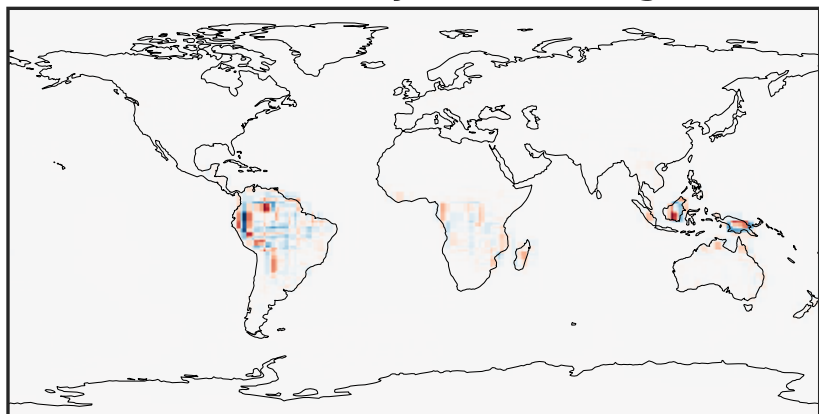
0.0000 0.0255 0.0509 0.0764 0.1018
ppb

14.3.0-rc.0 (Dev)
c24



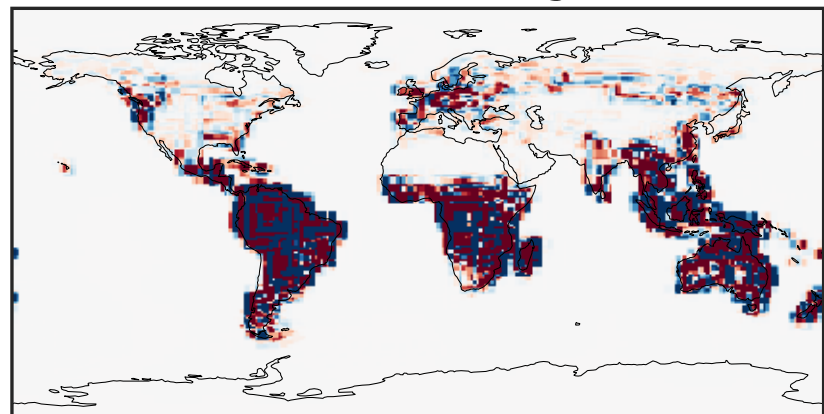
0.0000 0.0255 0.0509 0.0764 0.1018
ppb

Difference (1x1.25)
Dev - Ref, Dynamic Range



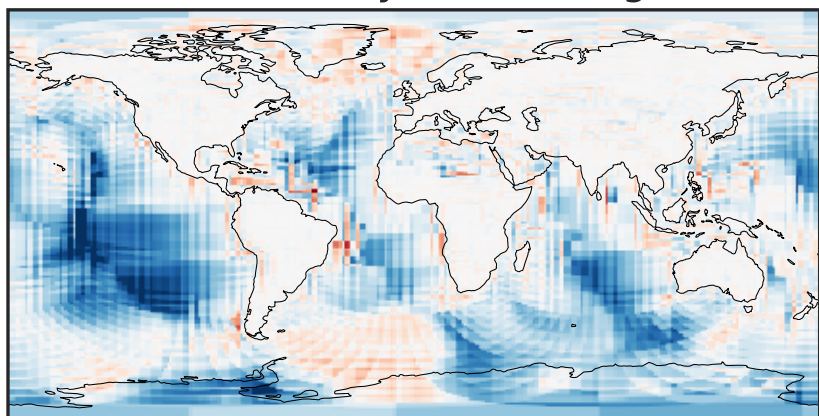
-0.02 0.00 0.02
ppb

Difference (1x1.25)
Dev - Ref, Restricted Range [5%,95%]



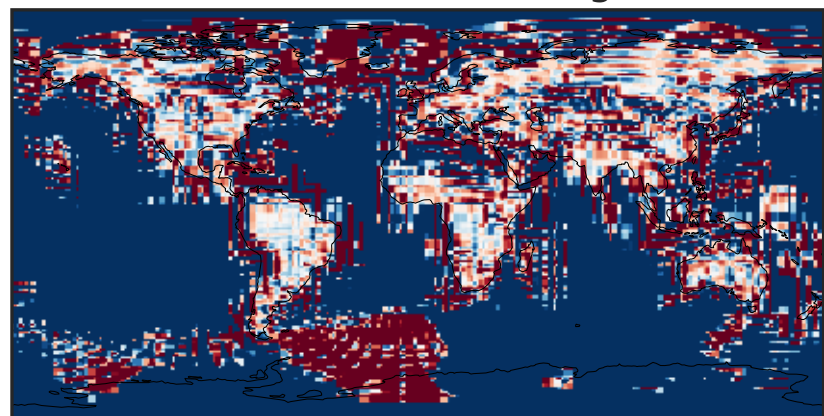
-0.0001 0.0000 0.0001
ppb

Ratio (1x1.25)
Dev/Ref, Dynamic Range



1e-05 1e-02 10 1e4 1e+07
unitless

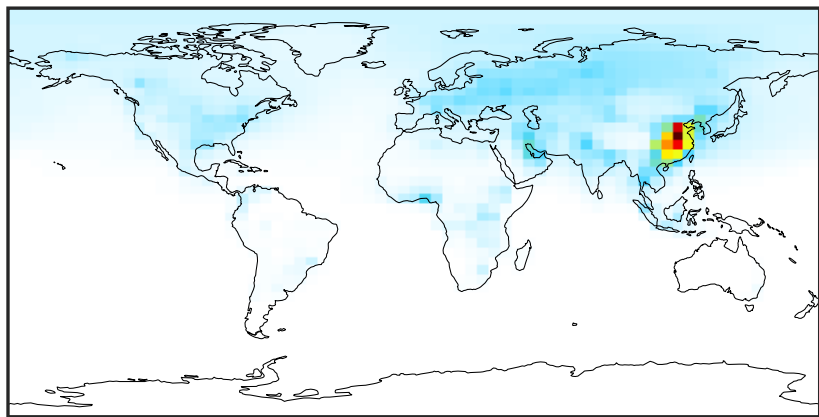
Ratio (1x1.25)
Dev/Ref, Fixed Range



0.50 0.75 1.00 1.50 2.00
unitless

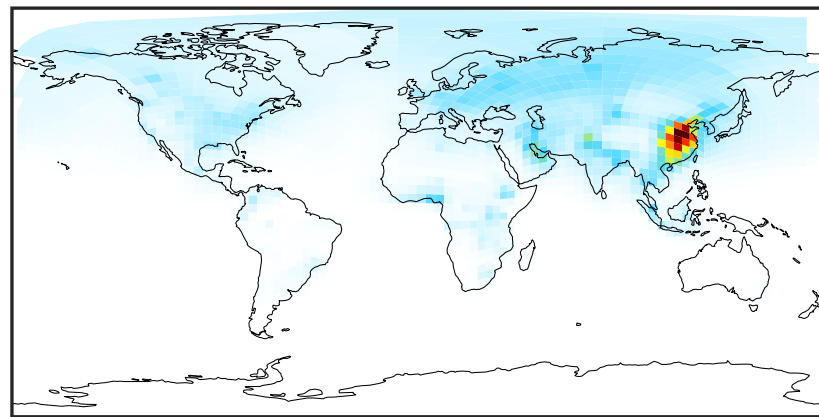
SpeciesConcVV_ALK4 (Jan2019)

14.3.0-rc.0 (Ref)
4.0x5.0



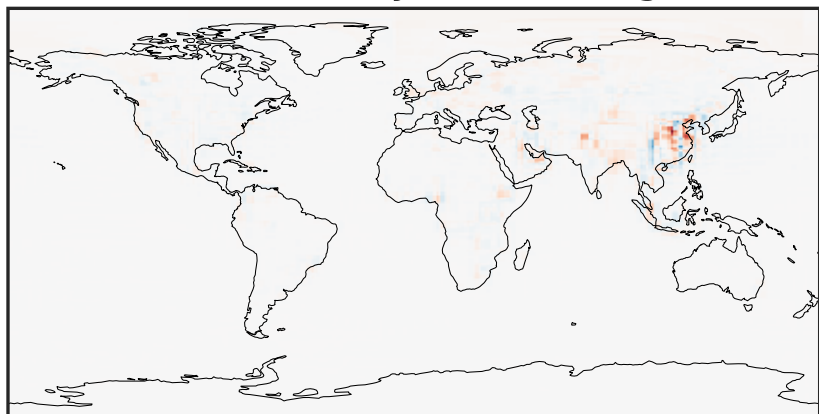
0.00 5.04 10.08 15.12 20.16
ppb

14.3.0-rc.0 (Dev)
c24



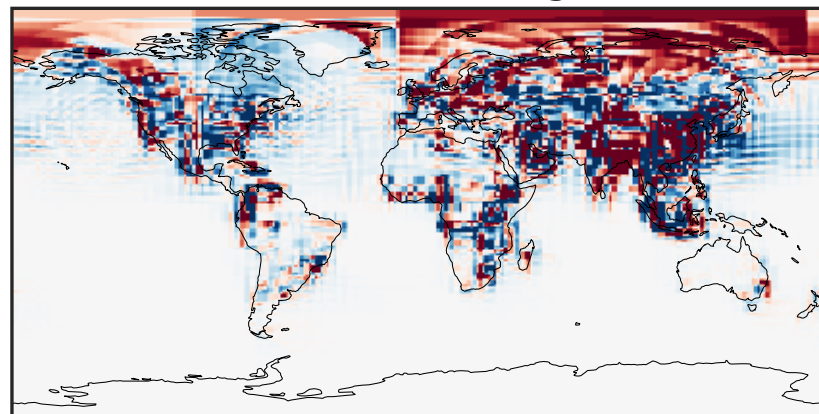
0.00 5.04 10.08 15.12 20.16
ppb

Difference (1x1.25)
Dev - Ref, Dynamic Range



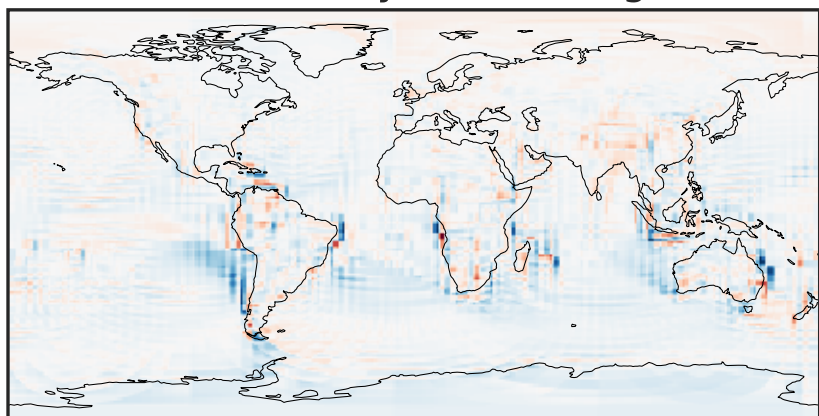
-10.29 -5.15 0.00 5.15 10.29
ppb

Difference (1x1.25)
Dev - Ref, Restricted Range [5%,95%]



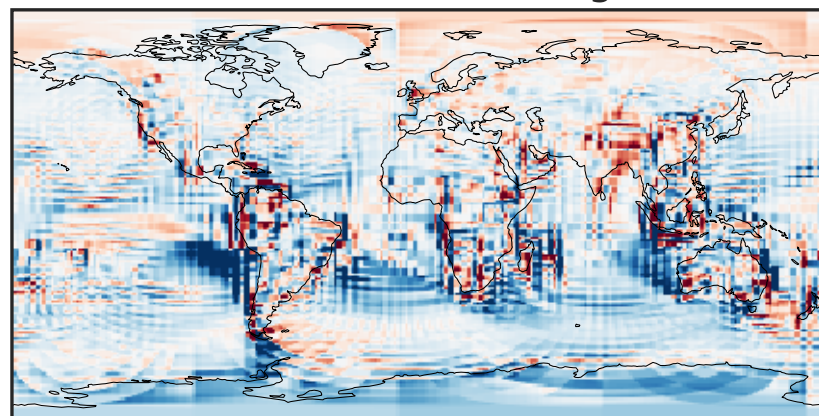
-0.2327 -0.1163 0.0000 0.1163 0.2327
ppb

Ratio (1x1.25)
Dev/Ref, Dynamic Range



1e-01 1 10
unitless

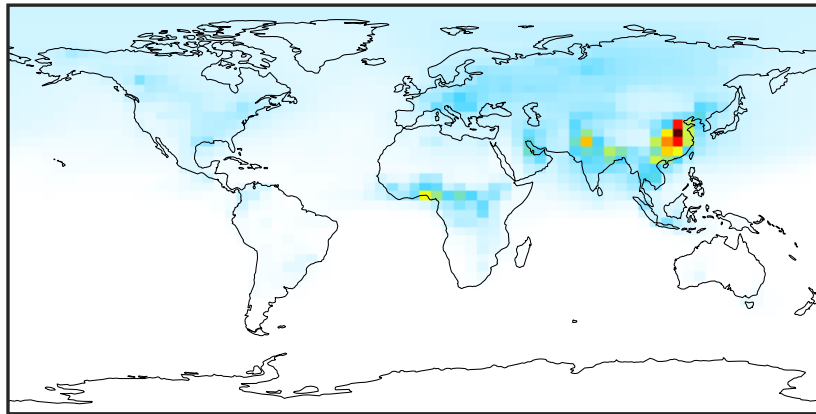
Ratio (1x1.25)
Dev/Ref, Fixed Range



0.50 0.75 1.00 1.50 2.00
unitless

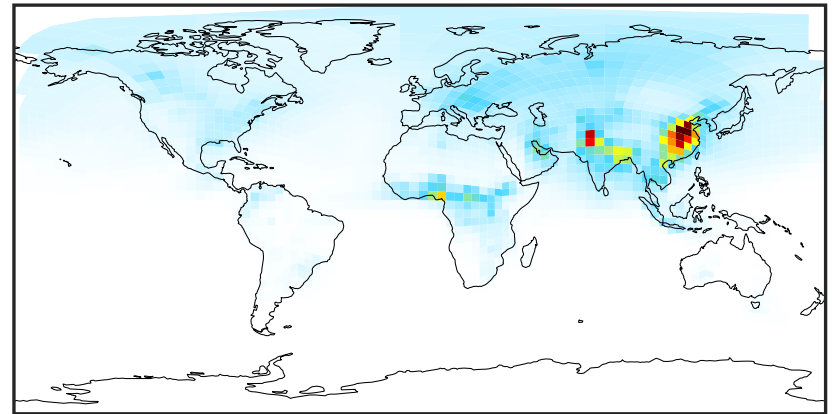
SpeciesConcVV_BENZ (Jan2019)

14.3.0-rc.0 (Ref)
4.0x5.0



0.000 0.488 0.975 1.462 1.950
ppb

14.3.0-rc.0 (Dev)
c24



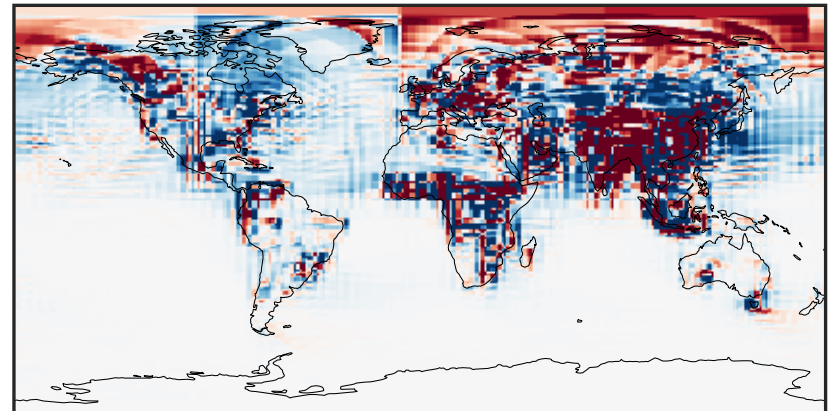
0.000 0.488 0.975 1.462 1.950
ppb

Difference (1x1.25)
Dev - Ref, Dynamic Range



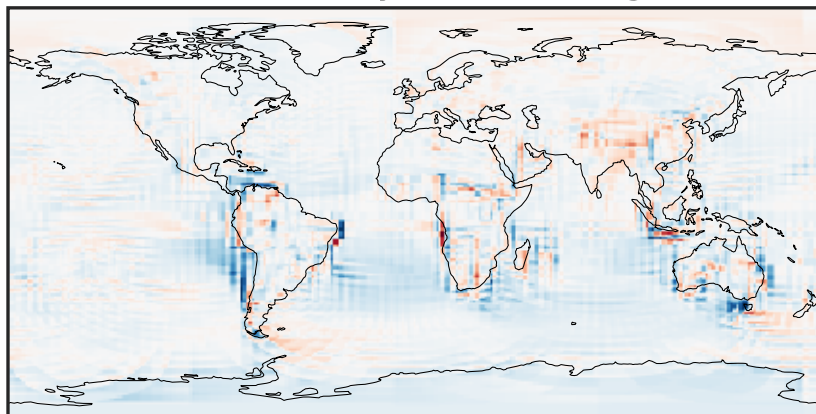
-1.091 -0.546 0.000 0.546 1.091
ppb

Difference (1x1.25)
Dev - Ref, Restricted Range [5%,95%]



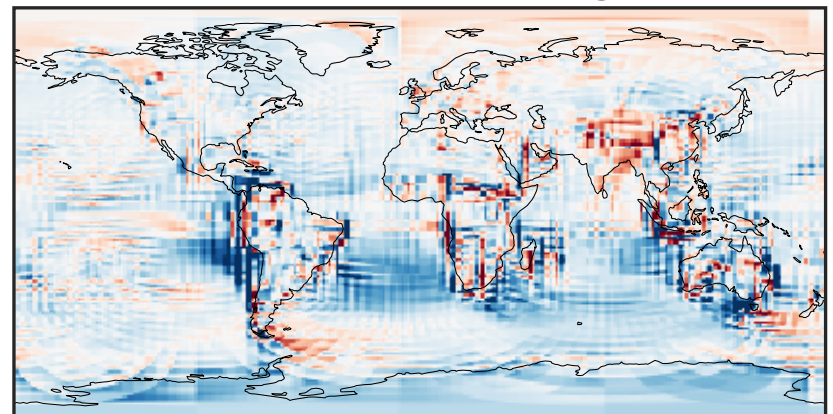
-0.01 0.00 0.01
ppb

Ratio (1x1.25)
Dev/Ref, Dynamic Range



0.159 0.580 1.000 3.642 6.283
unitless

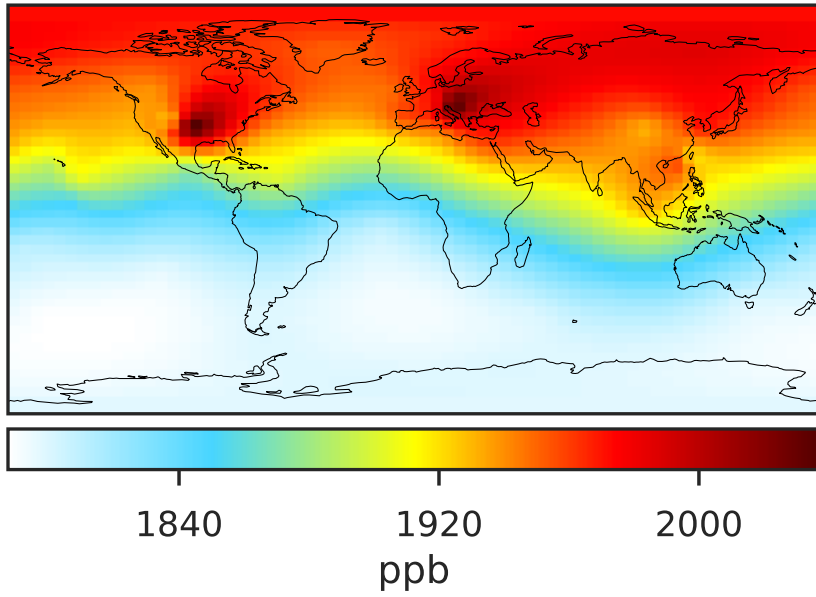
Ratio (1x1.25)
Dev/Ref, Fixed Range



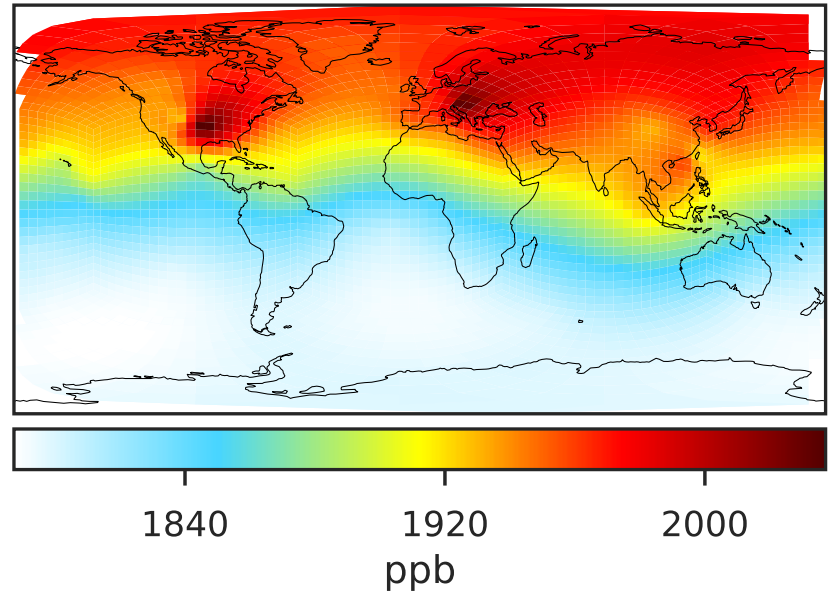
0.50 0.75 1.00 1.50 2.00
unitless

SpeciesConcVV_CH4 (Jan2019)

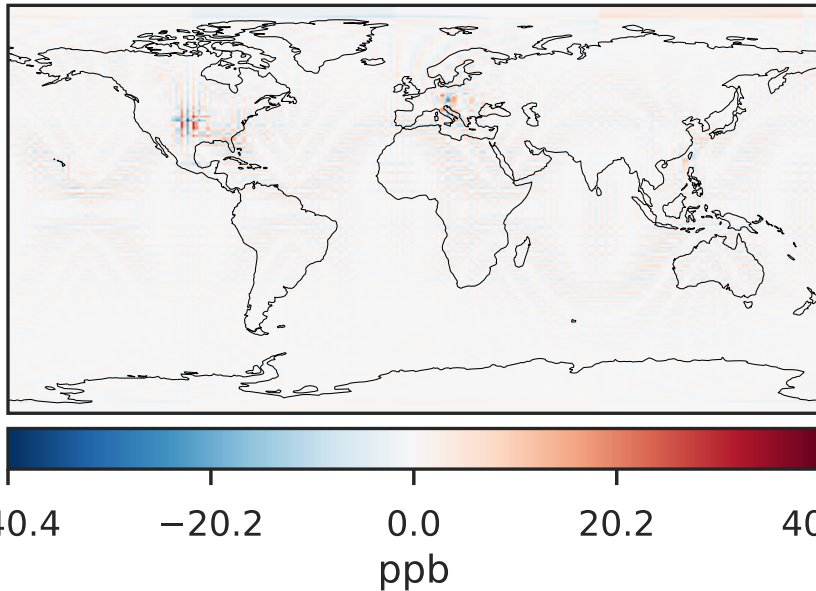
14.3.0-rc.0 (Ref)
4.0x5.0



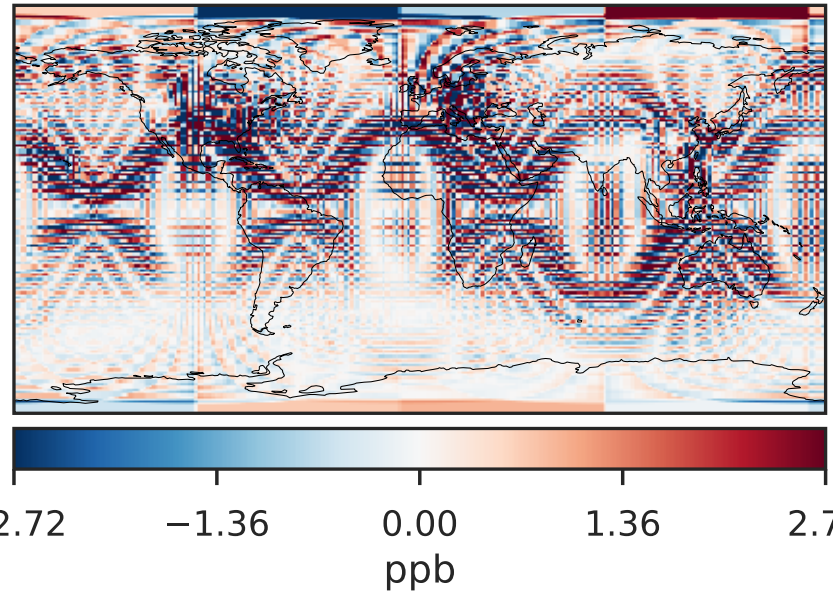
14.3.0-rc.0 (Dev)
c24



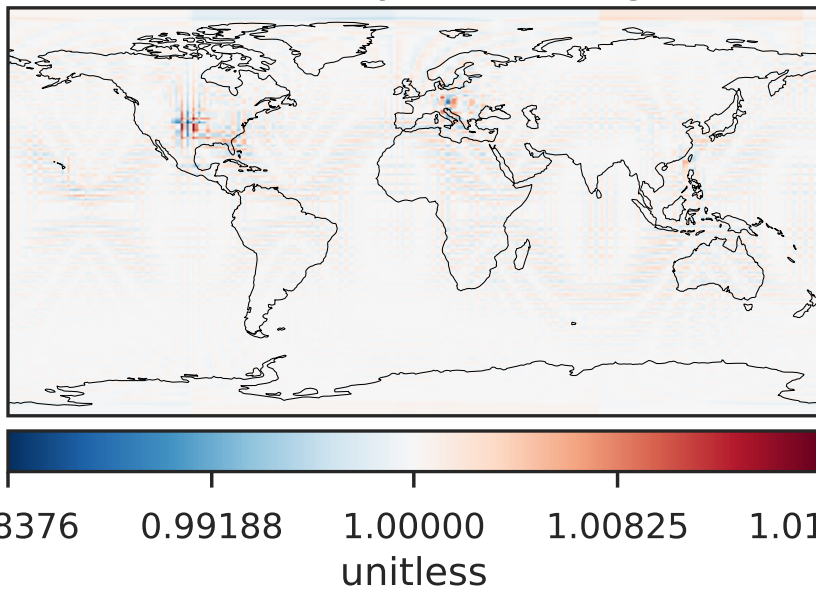
Difference (1x1.25)
Dev - Ref, Dynamic Range



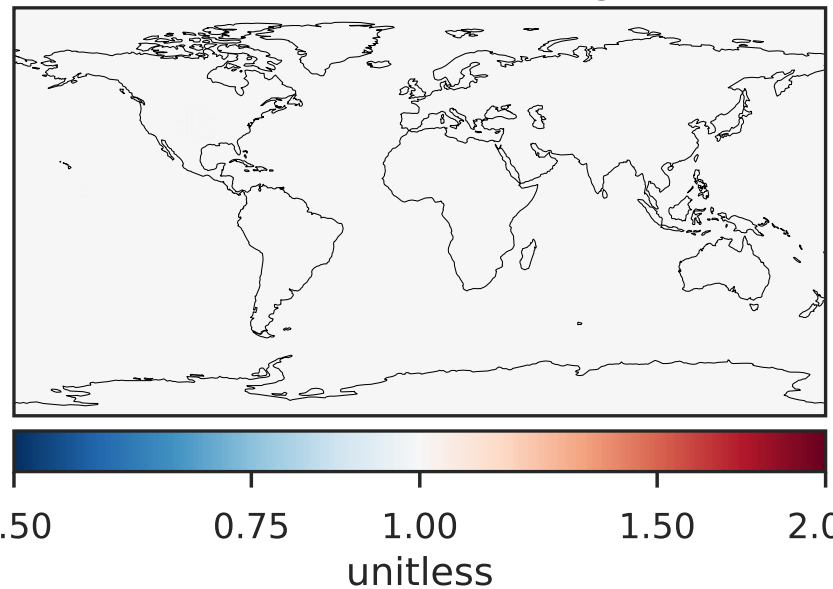
Difference (1x1.25)
Dev - Ref, Restricted Range [5%,95%]



Ratio (1x1.25)
Dev/Ref, Dynamic Range

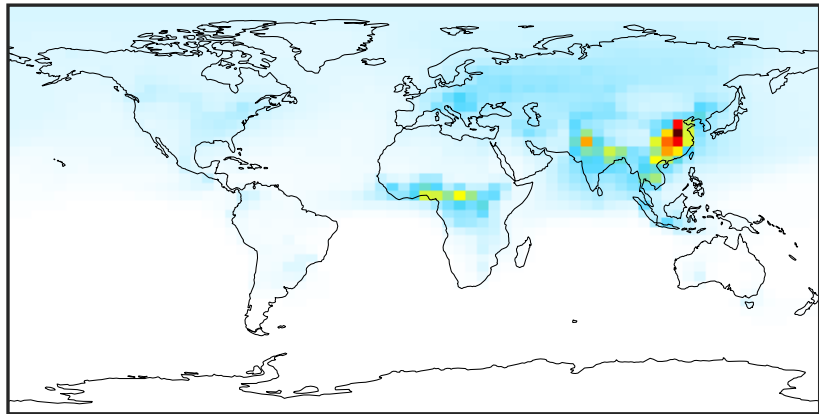


Ratio (1x1.25)
Dev/Ref, Fixed Range



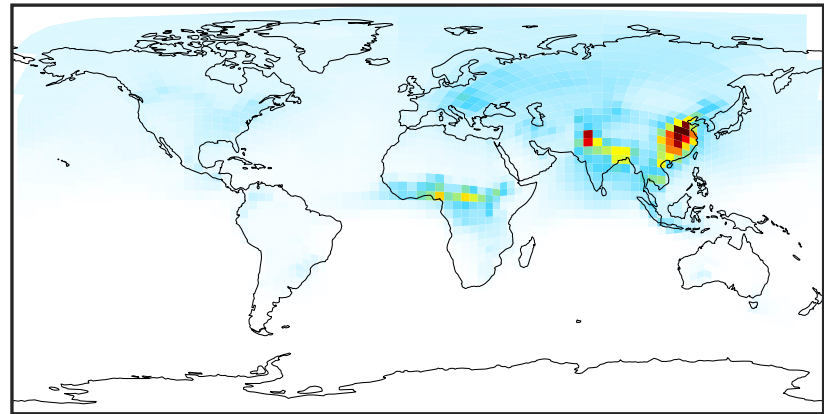
SpeciesConcVV_C2H2 (Jan2019)

14.3.0-rc.0 (Ref)
4.0x5.0



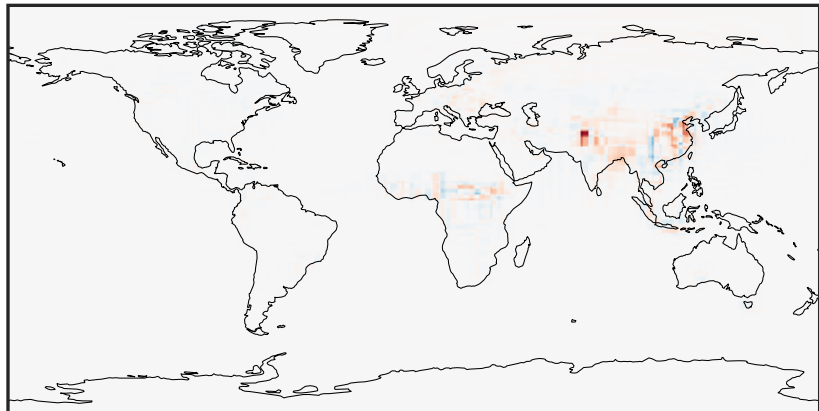
0.002 0.942 1.882 2.823 3.763
ppb

14.3.0-rc.0 (Dev)
c24



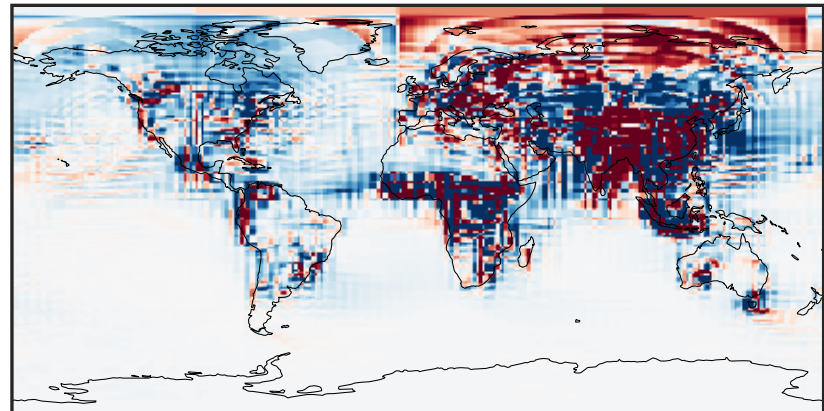
0.002 0.942 1.882 2.823 3.763
ppb

Difference (1x1.25)
Dev - Ref, Dynamic Range



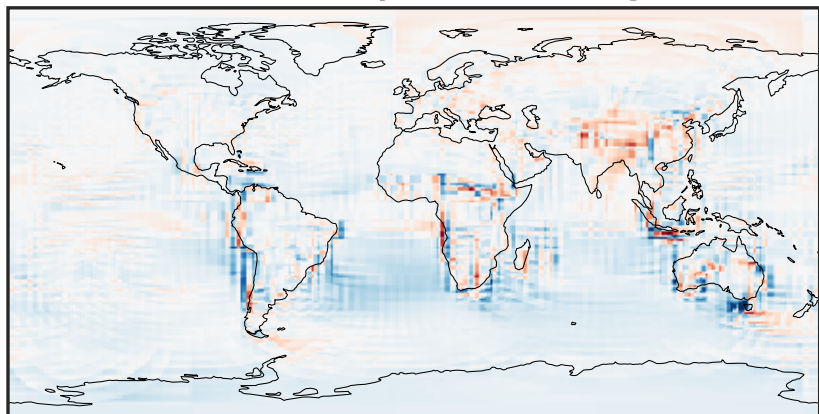
-2.22 -1.11 0.00 1.11 2.22
ppb

Difference (1x1.25)
Dev - Ref, Restricted Range [5%,95%]



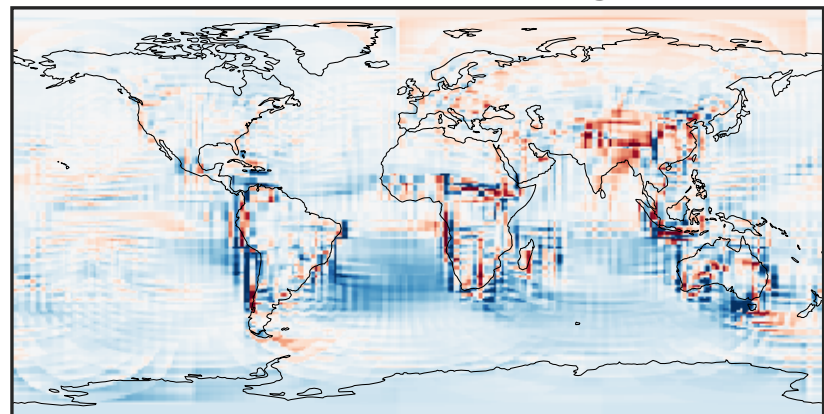
-0.015 0.000 0.015
ppb

Ratio (1x1.25)
Dev/Ref, Dynamic Range



0.264 0.632 1.000 2.391 3.782
unitless

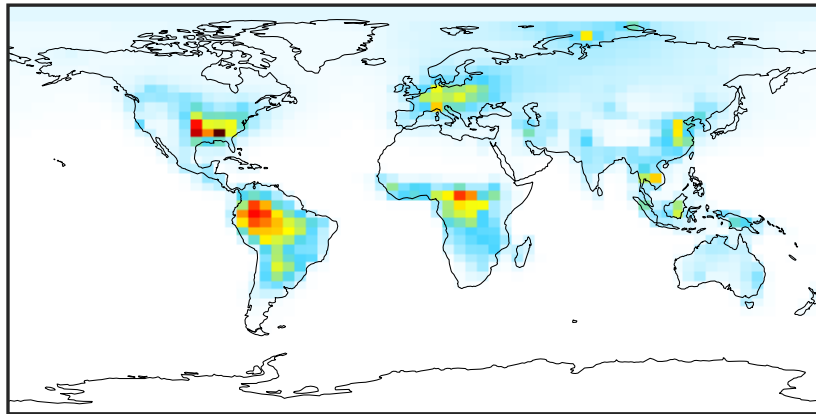
Ratio (1x1.25)
Dev/Ref, Fixed Range



0.50 0.75 1.00 1.50 2.00
unitless

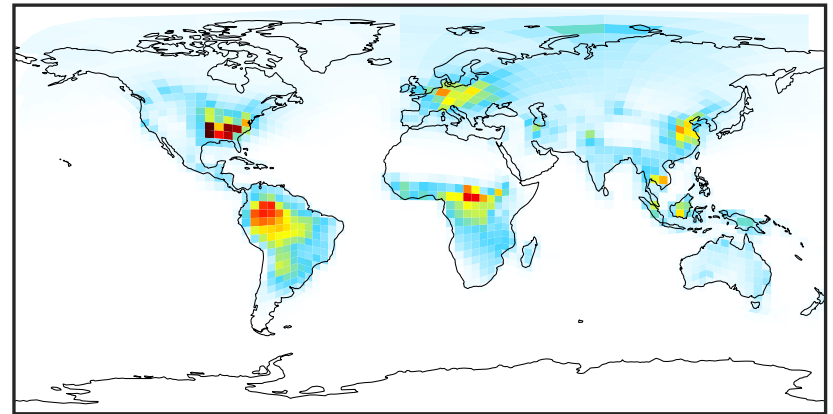
SpeciesConcVV_C2H4 (Jan2019)

14.3.0-rc.0 (Ref)
4.0x5.0



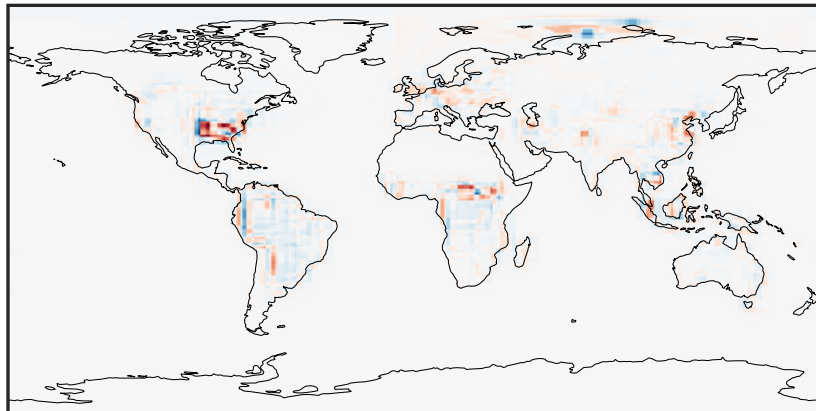
0.000 1.067 2.133 3.200 4.267
ppb

14.3.0-rc.0 (Dev)
c24



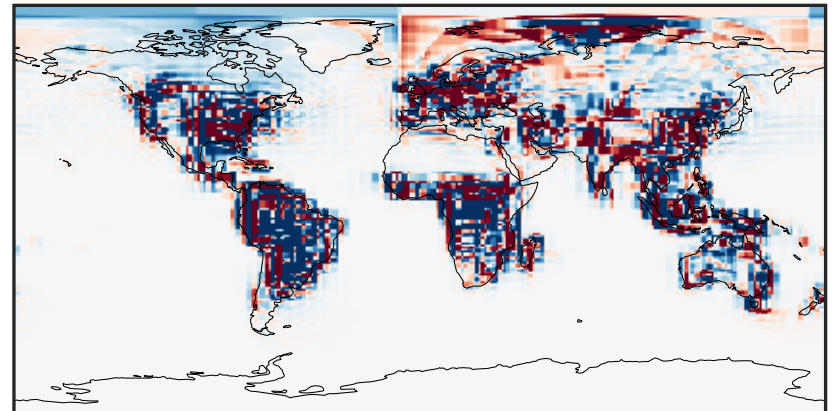
0.000 1.067 2.133 3.200 4.267
ppb

Difference (1x1.25)
Dev - Ref, Dynamic Range



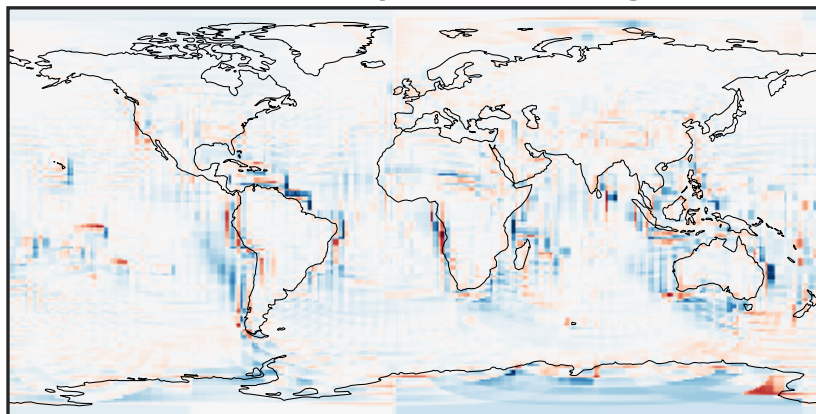
-2.109 -1.055 0.000 1.055 2.109
ppb

Difference (1x1.25)
Dev - Ref, Restricted Range [5%,95%]



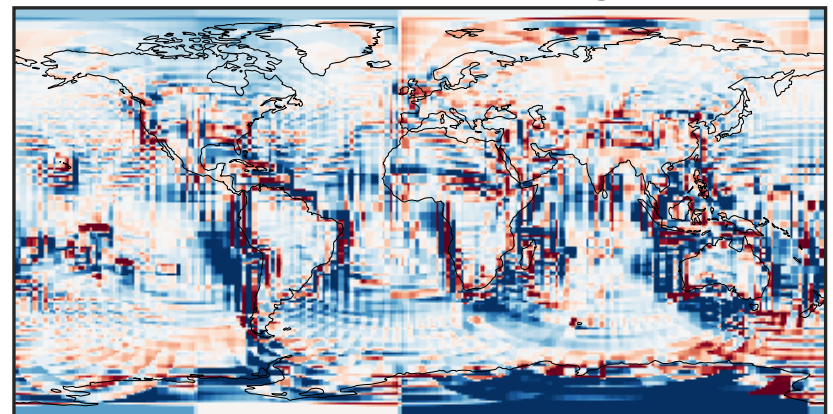
-0.0887 -0.0443 0.0000 0.0443 0.0887
ppb

Ratio (1x1.25)
Dev/Ref, Dynamic Range



1e-01 1 10
unitless

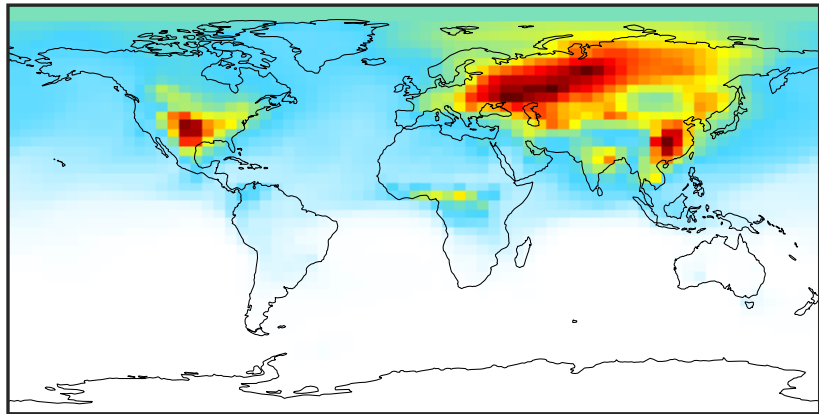
Ratio (1x1.25)
Dev/Ref, Fixed Range



0.50 0.75 1.00 1.50 2.00
unitless

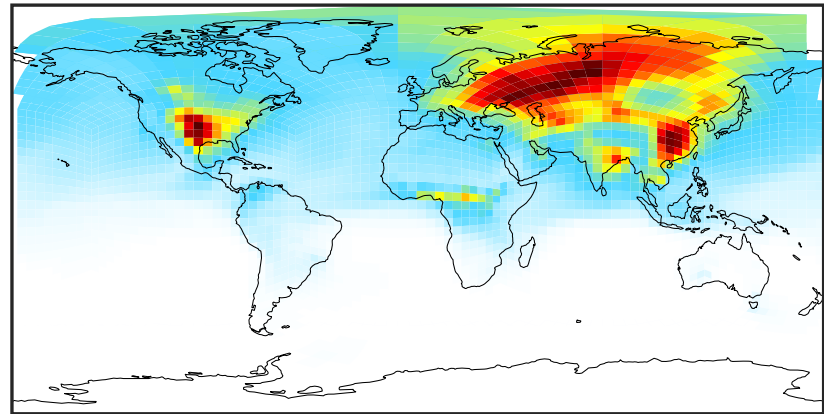
SpeciesConcVV_C2H6 (Jan2019)

14.3.0-rc.0 (Ref)
4.0x5.0



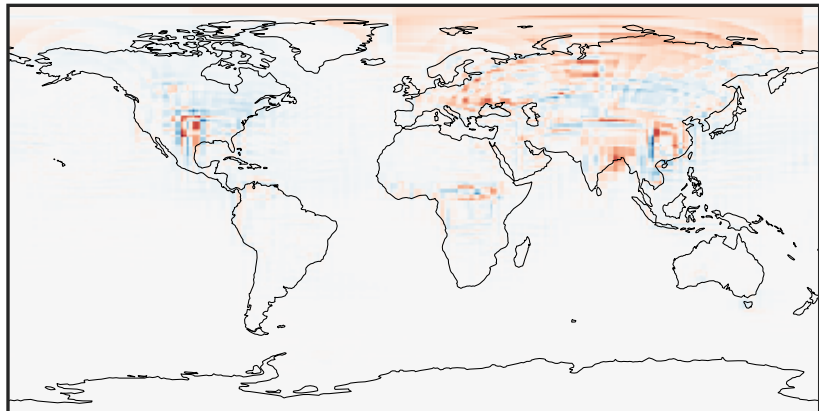
0.047 1.424 2.801 4.179 5.556
ppb

14.3.0-rc.0 (Dev)
c24



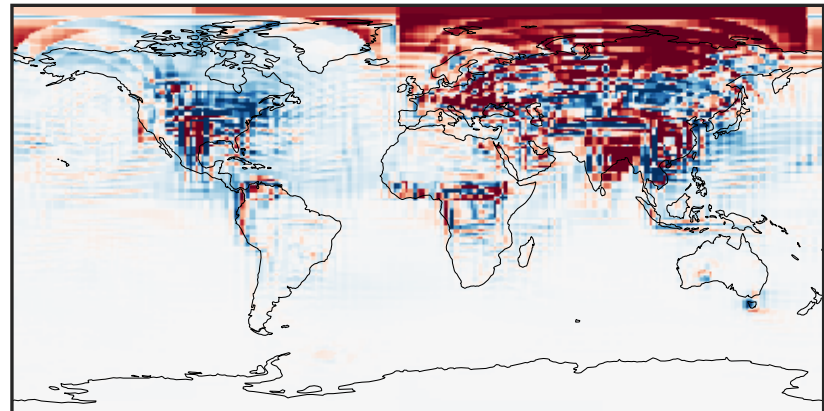
0.047 1.424 2.801 4.179 5.556
ppb

Difference (1x1.25)
Dev - Ref, Dynamic Range



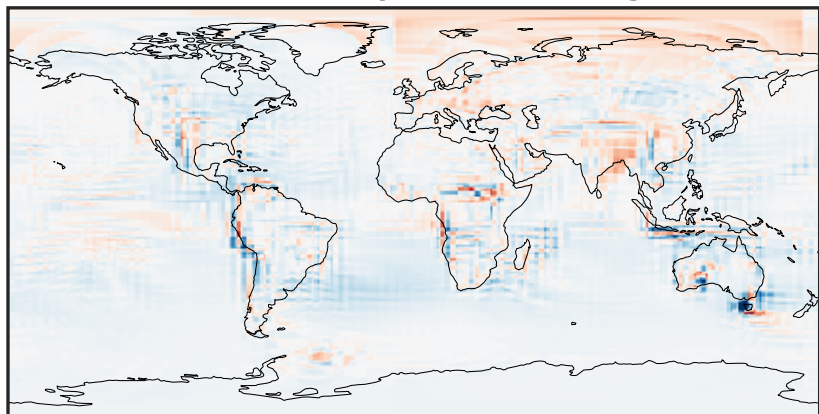
-1.887 -0.944 0.000 0.944 1.887
ppb

Difference (1x1.25)
Dev - Ref, Restricted Range [5%,95%]



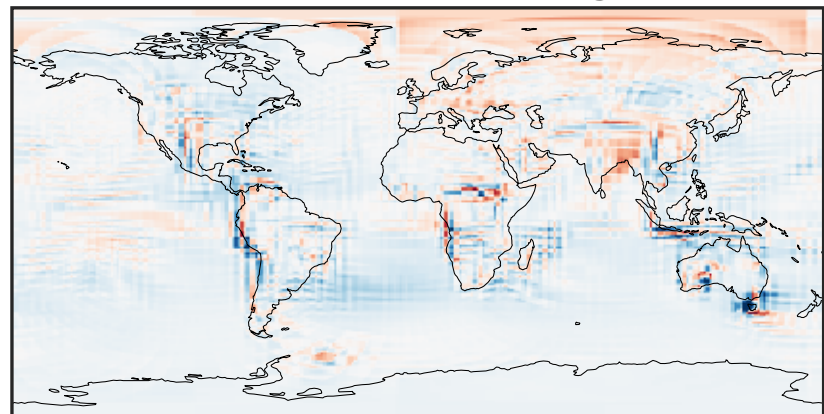
-0.276 -0.138 0.000 0.138 0.276
ppb

Ratio (1x1.25)
Dev/Ref, Dynamic Range



0.428 0.714 1.000 1.669 2.339
unitless

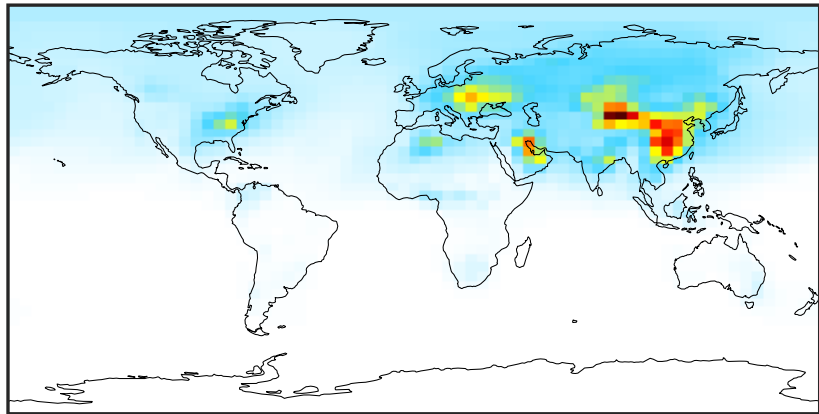
Ratio (1x1.25)
Dev/Ref, Fixed Range



0.50 0.75 1.00 1.50 2.00
unitless

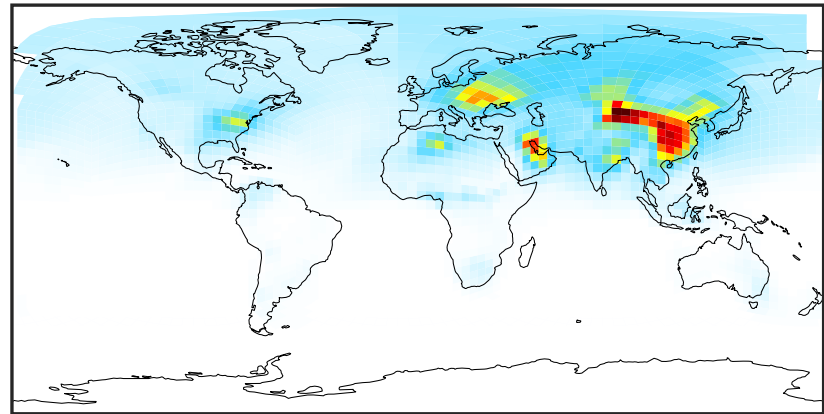
SpeciesConcVV_C3H8 (Jan2019)

14.3.0-rc.0 (Ref)
4.0x5.0



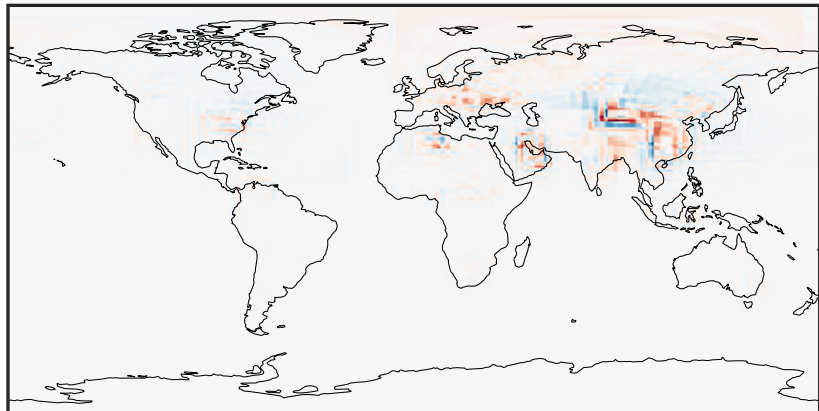
0.001 1.496 2.991 4.486 5.981
ppb

14.3.0-rc.0 (Dev)
c24



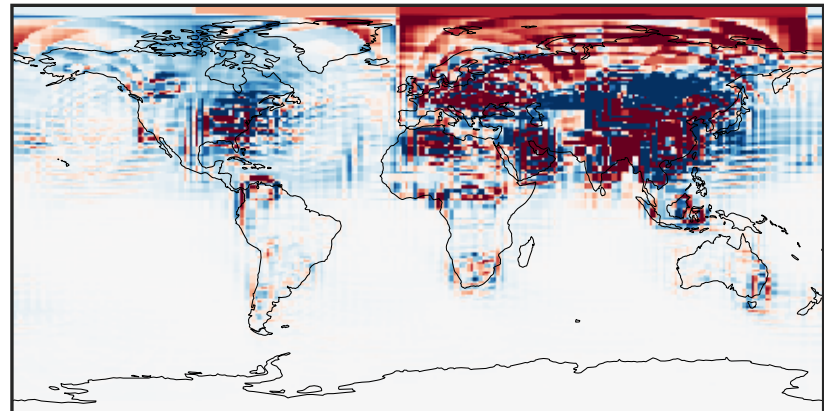
0.001 1.496 2.991 4.486 5.981
ppb

Difference (1x1.25)
Dev - Ref, Dynamic Range



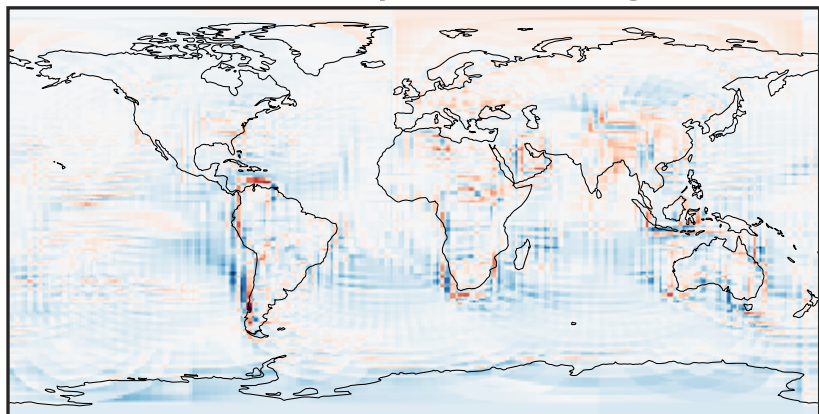
-2.232 -1.116 0.000 1.116 2.232
ppb

Difference (1x1.25)
Dev - Ref, Restricted Range [5%,95%]



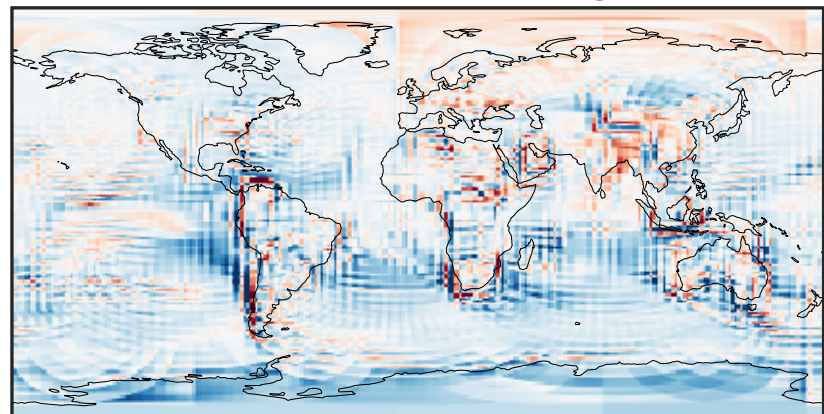
-0.090 -0.045 0.000 0.045 0.090
ppb

Ratio (1x1.25)
Dev/Ref, Dynamic Range



0.263 0.631 1.000 2.403 3.807
unitless

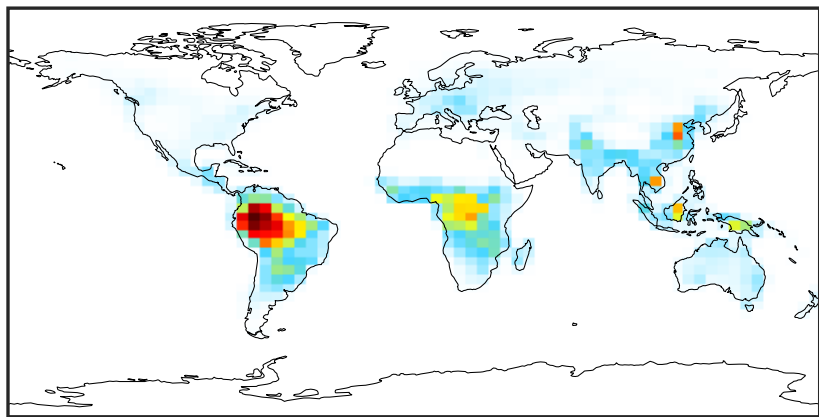
Ratio (1x1.25)
Dev/Ref, Fixed Range



0.50 0.75 1.00 1.50 2.00
unitless

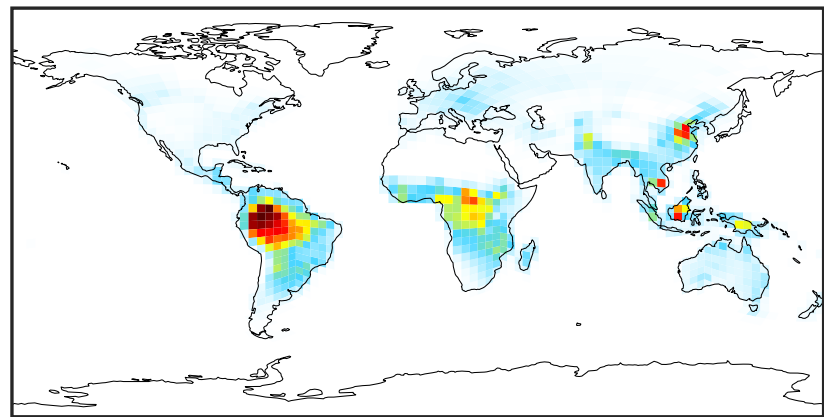
SpeciesConcVV_PRPE (Jan2019)

14.3.0-rc.0 (Ref)
4.0x5.0



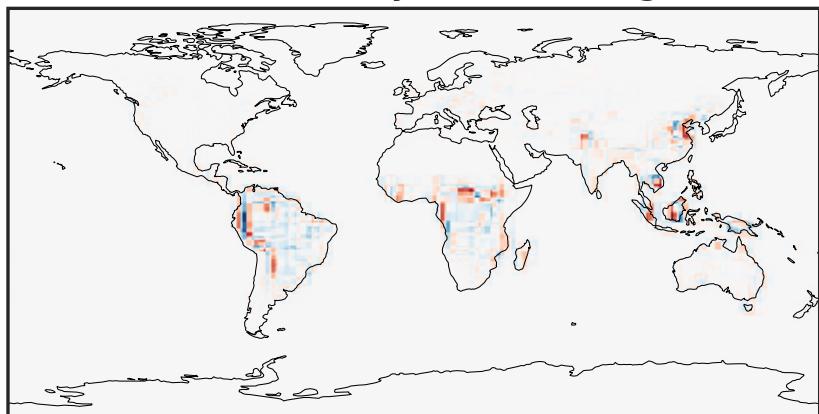
0.000 0.526 1.051 1.577 2.103
ppb

14.3.0-rc.0 (Dev)
c24



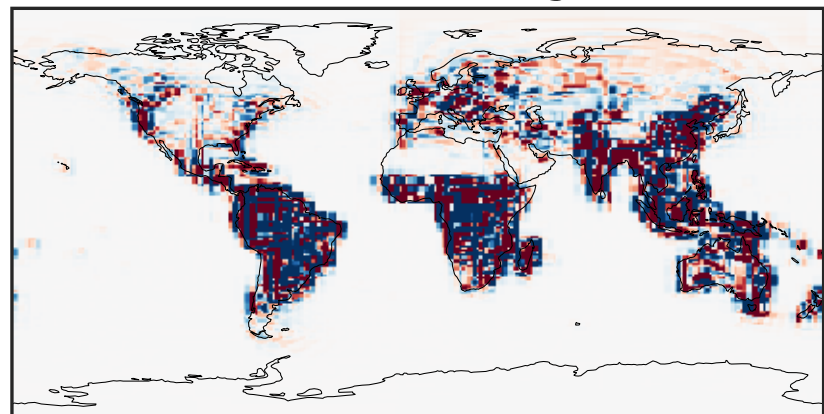
0.000 0.526 1.051 1.577 2.103
ppb

Difference (1x1.25)
Dev - Ref, Dynamic Range



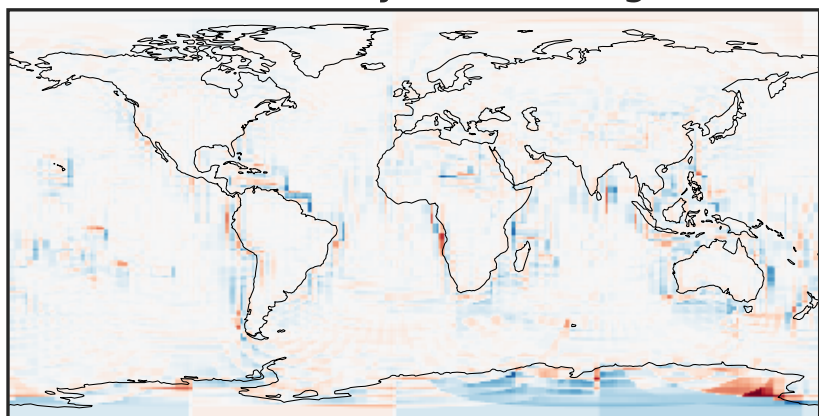
-0.896 -0.448 0.000 0.448 0.896
ppb

Difference (1x1.25)
Dev - Ref, Restricted Range [5%,95%]



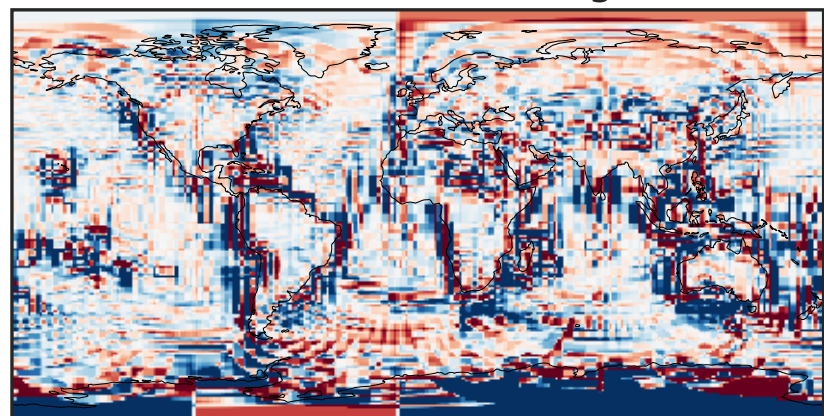
-0.015 0.000 0.015
ppb

Ratio (1x1.25)
Dev/Ref, Dynamic Range



1e-03 1e-02 1e-01 1 10 100 1000
unitless

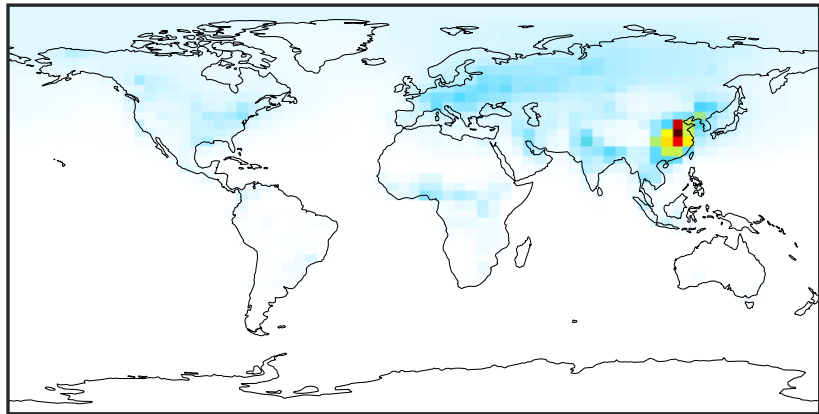
Ratio (1x1.25)
Dev/Ref, Fixed Range



0.50 0.75 1.00 1.50 2.00
unitless

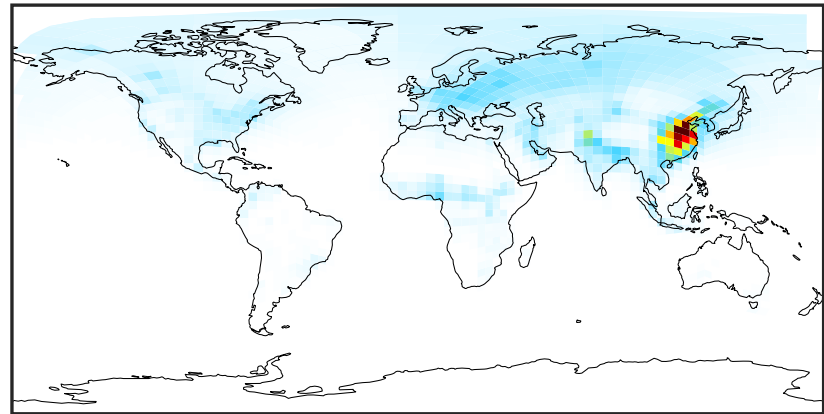
SpeciesConcVV_TOLU (Jan2019)

14.3.0-rc.0 (Ref)
4.0x5.0



0.000 0.494 0.989 1.483 1.977
ppb

14.3.0-rc.0 (Dev)
c24



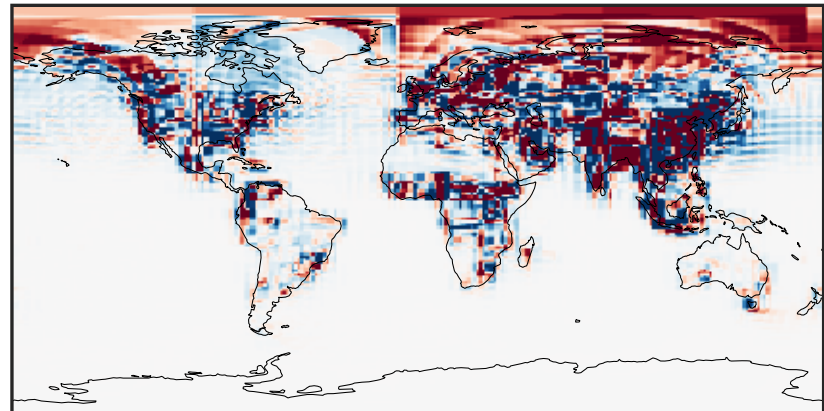
0.000 0.494 0.989 1.483 1.977
ppb

Difference (1x1.25)
Dev - Ref, Dynamic Range



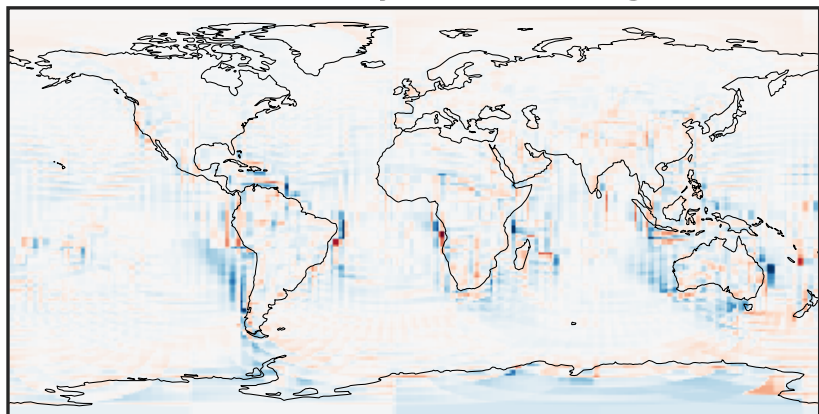
-0.888 -0.444 0.000 0.444 0.888
ppb

Difference (1x1.25)
Dev - Ref, Restricted Range [5%,95%]



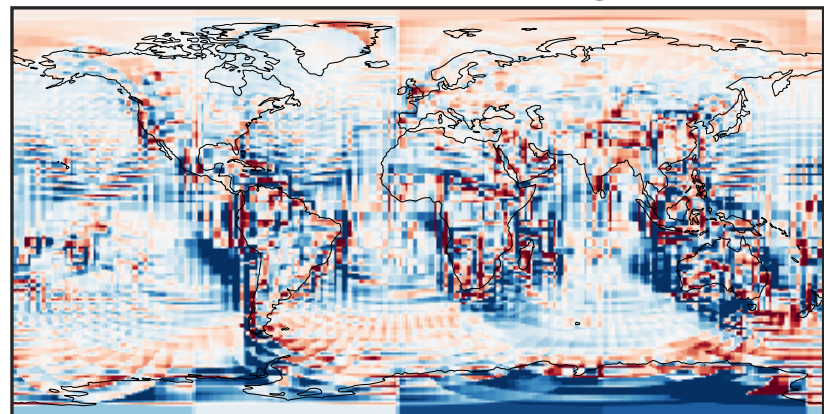
-0.01 0.00 0.01
ppb

Ratio (1x1.25)
Dev/Ref, Dynamic Range



1e-01 1 10
unitless

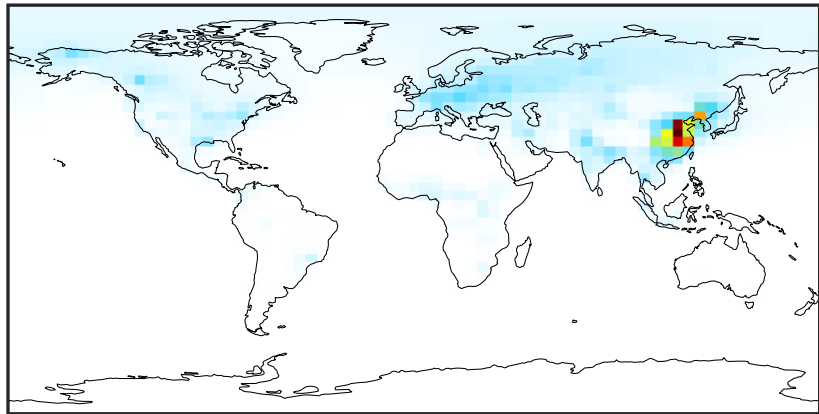
Ratio (1x1.25)
Dev/Ref, Fixed Range



0.50 0.75 1.00 1.50 2.00
unitless

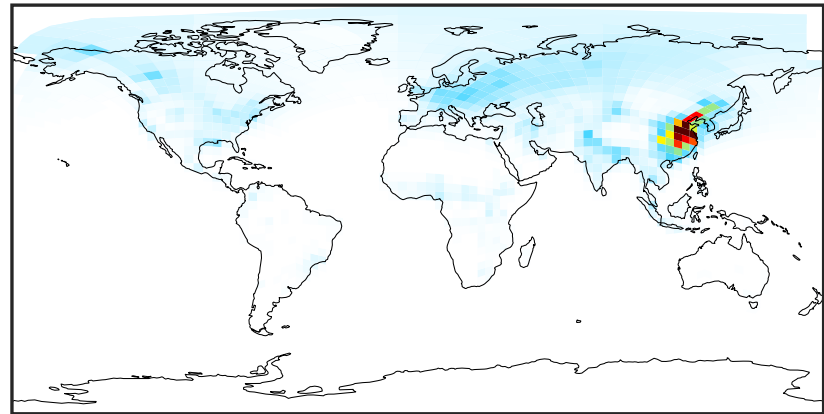
SpeciesConcVV_XYLE (Jan2019)

14.3.0-rc.0 (Ref)
4.0x5.0



0.000 0.367 0.734 1.101 1.468
ppb

14.3.0-rc.0 (Dev)
c24



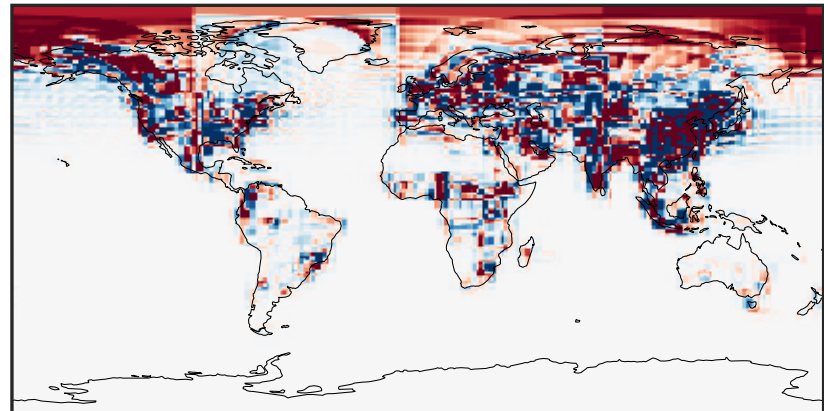
0.000 0.367 0.734 1.101 1.468
ppb

Difference (1x1.25)
Dev - Ref, Dynamic Range



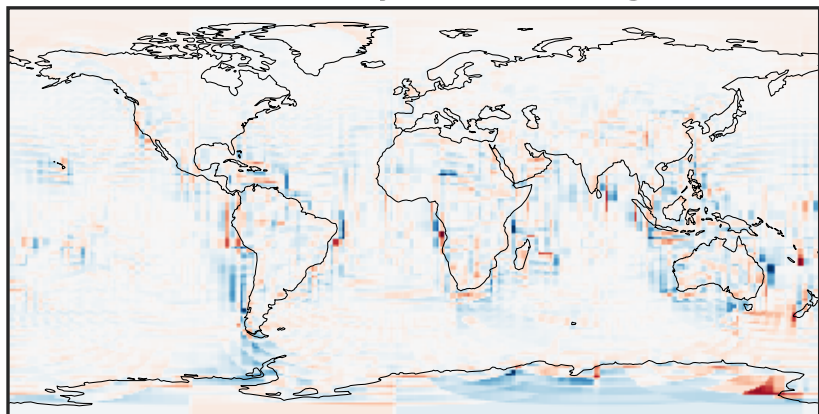
-0.998 -0.499 0.000 0.499 0.998
ppb

Difference (1x1.25)
Dev - Ref, Restricted Range [5%,95%]



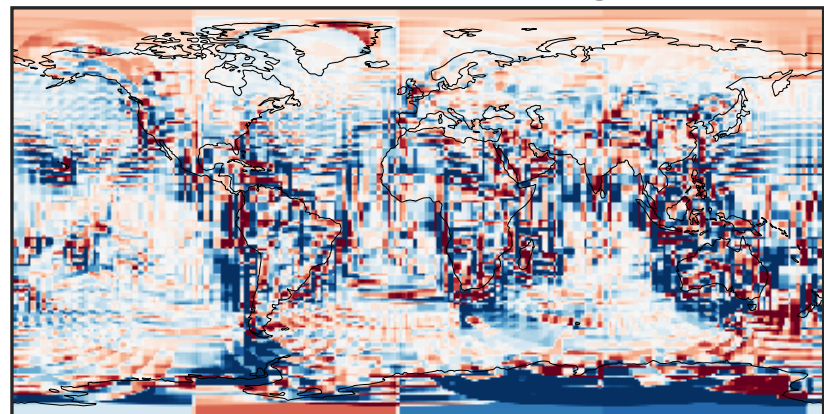
-0.008 0.000 0.008
ppb

Ratio (1x1.25)
Dev/Ref, Dynamic Range



1e-01 1 10
unitless

Ratio (1x1.25)
Dev/Ref, Fixed Range



0.50 0.75 1.00 1.50 2.00
unitless