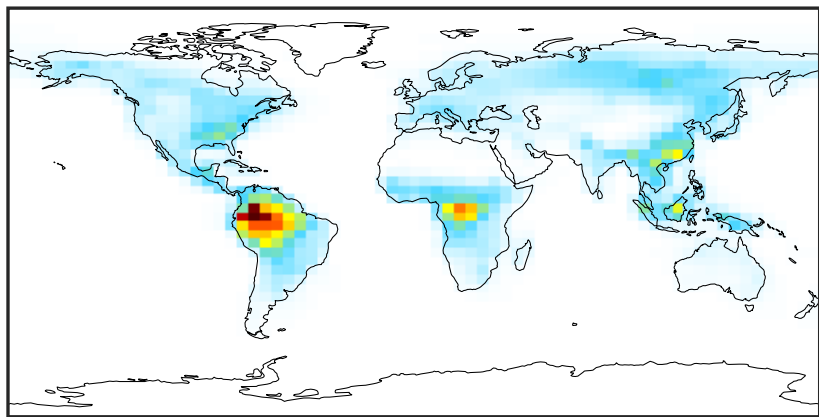


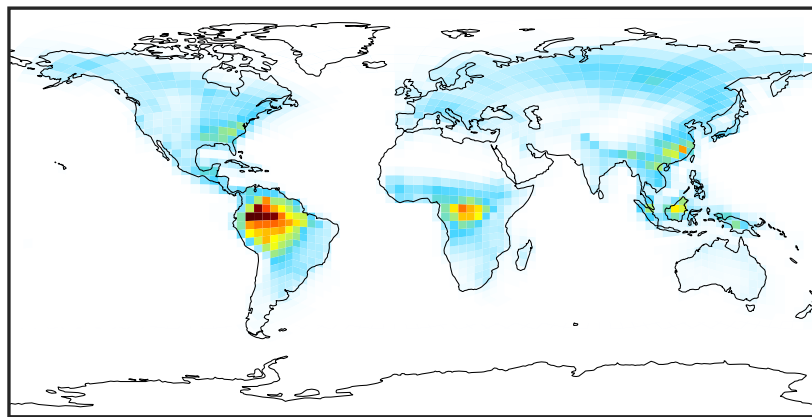
SpeciesConcVV_EOH (Jul2019)

14.3.0-rc.0 (Ref)
4.0x5.0



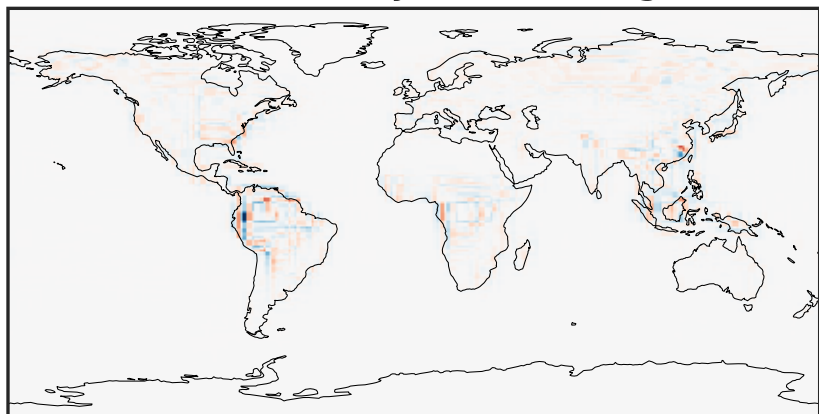
0.000 0.603 1.205 1.808 2.411
ppb

14.3.0-rc.0 (Dev)
c24



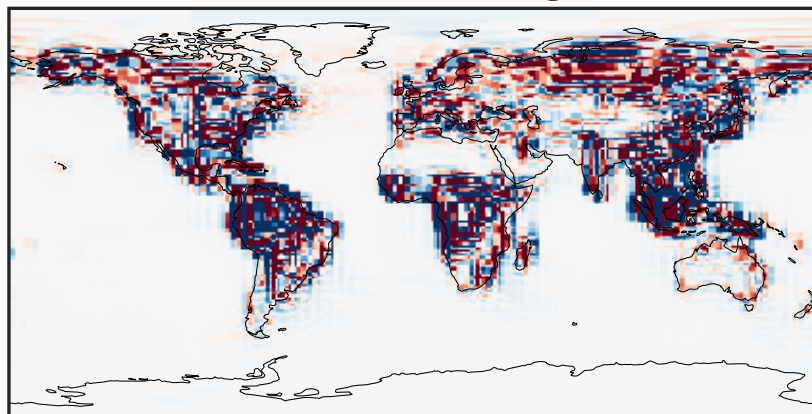
0.000 0.603 1.205 1.808 2.411
ppb

Difference (1x1.25)
Dev - Ref, Dynamic Range



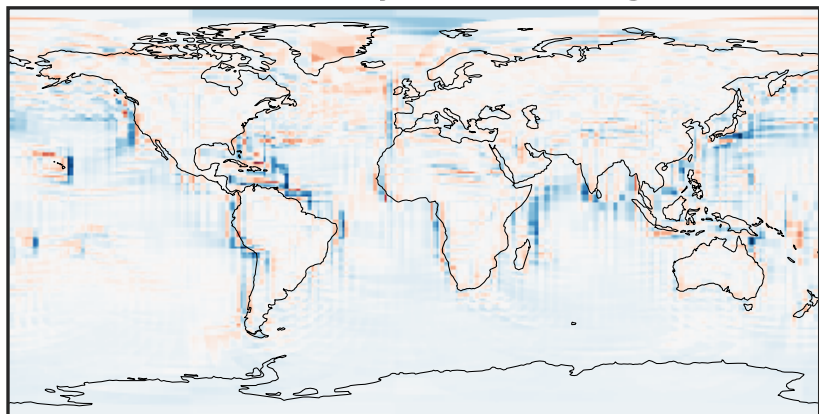
-1.011 -0.506 0.000 0.506 1.011
ppb

Difference (1x1.25)
Dev - Ref, Restricted Range [5%,95%]



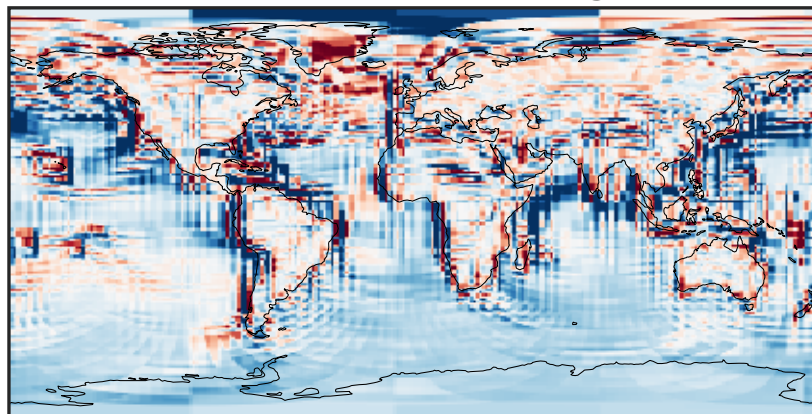
-0.025 0.000 0.025
ppb

Ratio (1x1.25)
Dev/Ref, Dynamic Range



1e-01 1 10
unitless

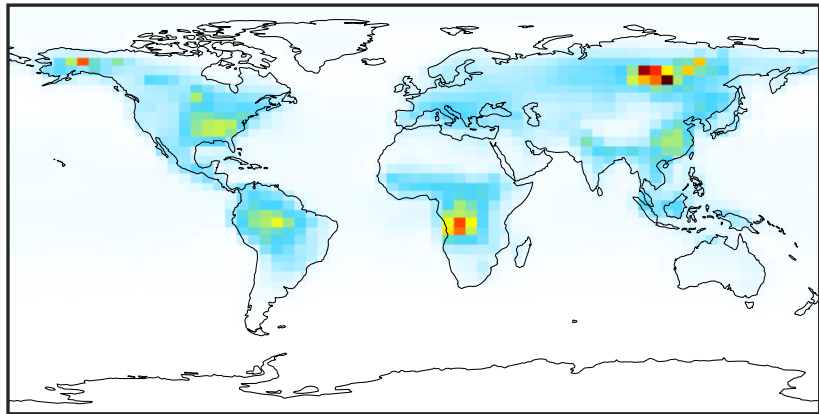
Ratio (1x1.25)
Dev/Ref, Fixed Range



0.50 0.75 1.00 1.50 2.00
unitless

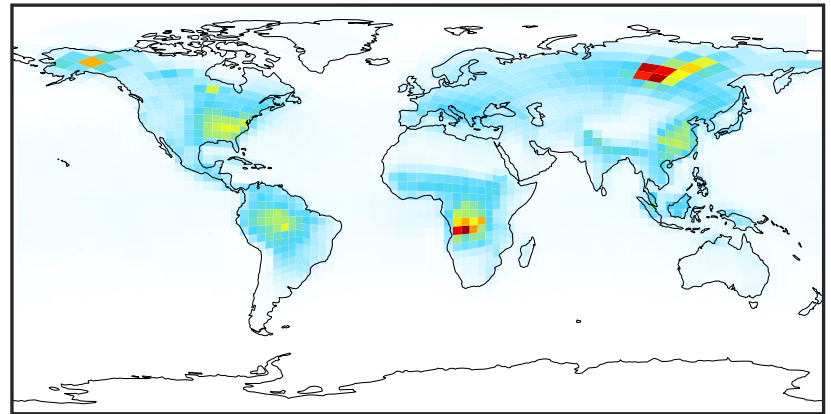
SpeciesConcVV_MOH (Jul2019)

14.3.0-rc.0 (Ref)
4.0x5.0



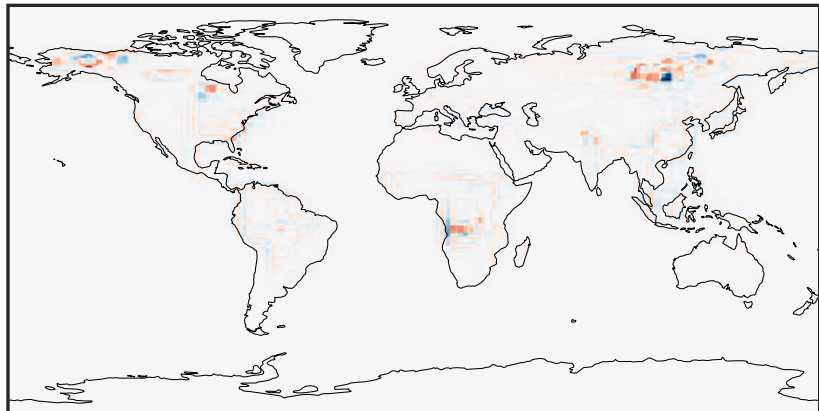
0.02 4.50 8.97 13.45 17.92
ppb

14.3.0-rc.0 (Dev)
c24



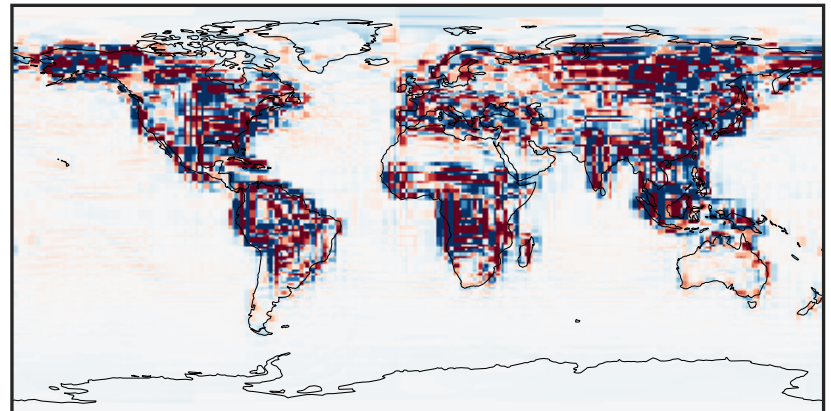
0.02 4.50 8.97 13.45 17.92
ppb

Difference (1x1.25)
Dev - Ref, Dynamic Range



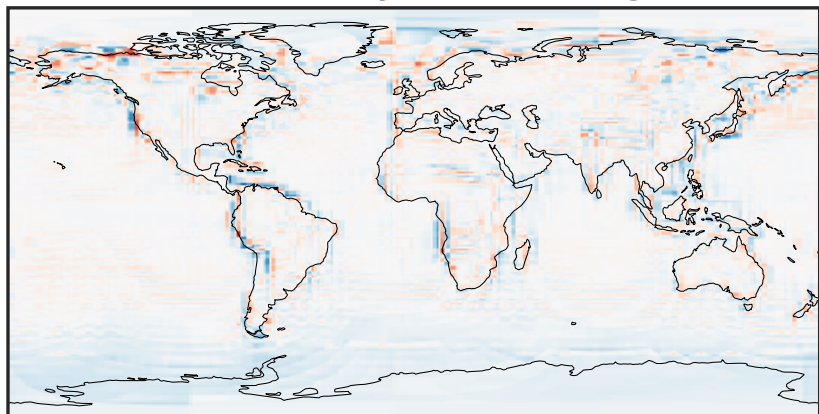
-9.83 -4.91 0.00 4.91 9.83
ppb

Difference (1x1.25)
Dev - Ref, Restricted Range [5%,95%]



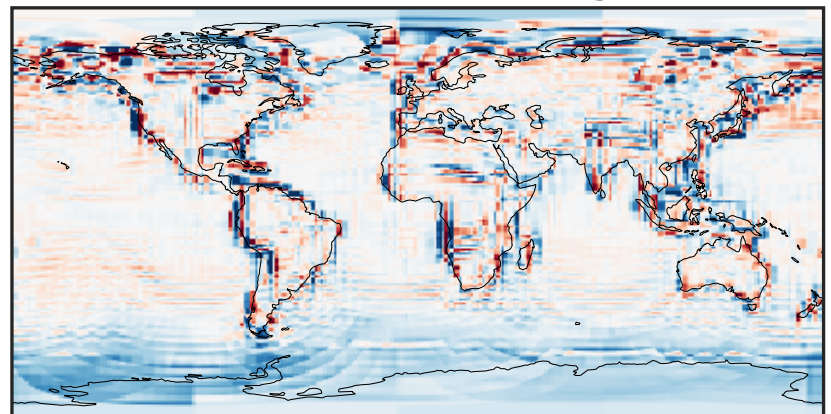
-0.3269 -0.1634 0.0000 0.1634 0.3269
ppb

Ratio (1x1.25)
Dev/Ref, Dynamic Range



0.127 0.564 1.000 4.424 7.848
unitless

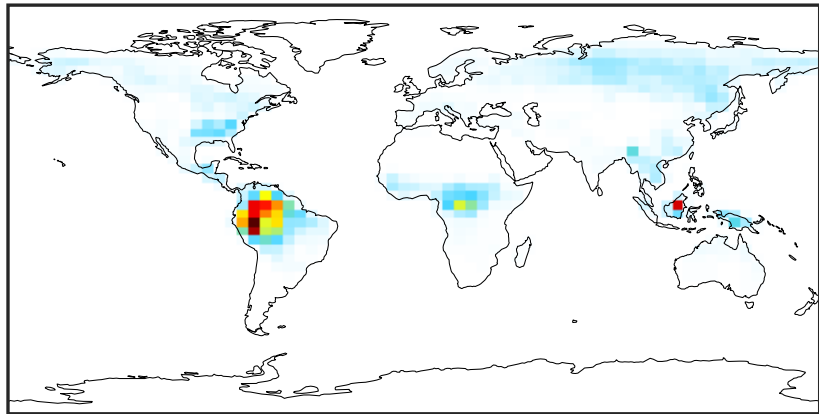
Ratio (1x1.25)
Dev/Ref, Fixed Range



0.50 0.75 1.00 1.50 2.00
unitless

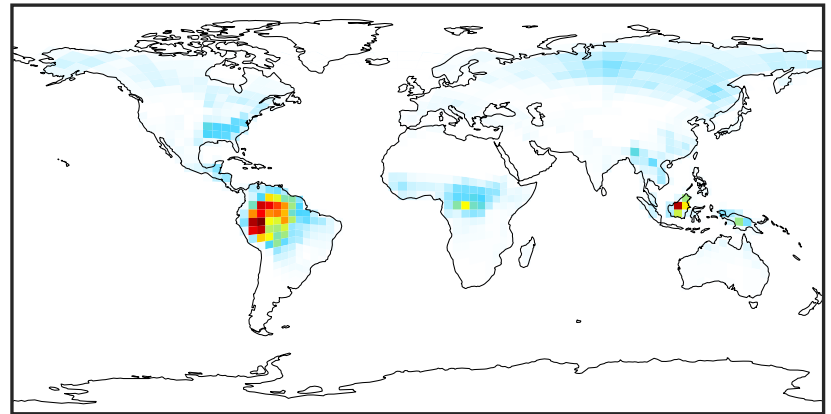
SpeciesConcVV_ISOP (Jul2019)

14.3.0-rc.0 (Ref)
4.0x5.0



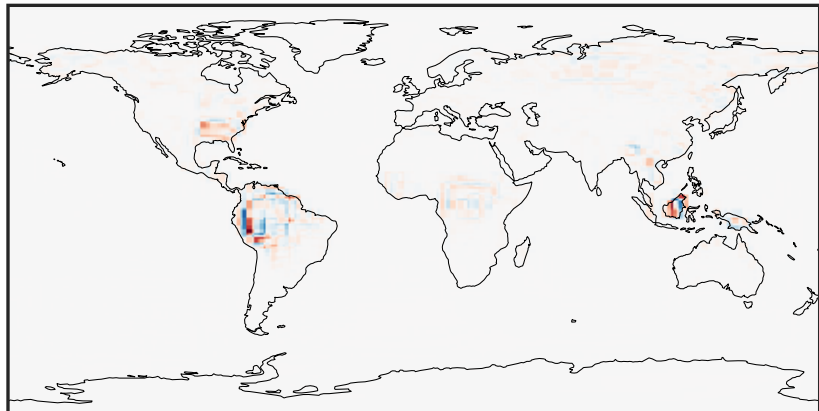
0.00 1.85 3.70 5.55 7.40
ppb

14.3.0-rc.0 (Dev)
c24



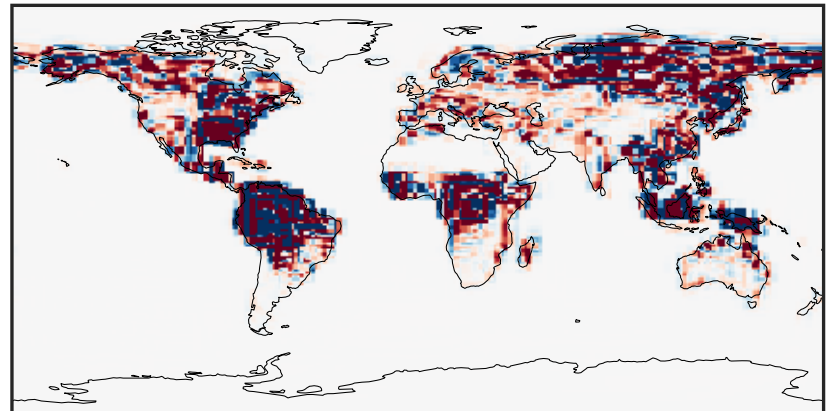
0.00 1.85 3.70 5.55 7.40
ppb

Difference (1x1.25)
Dev - Ref, Dynamic Range



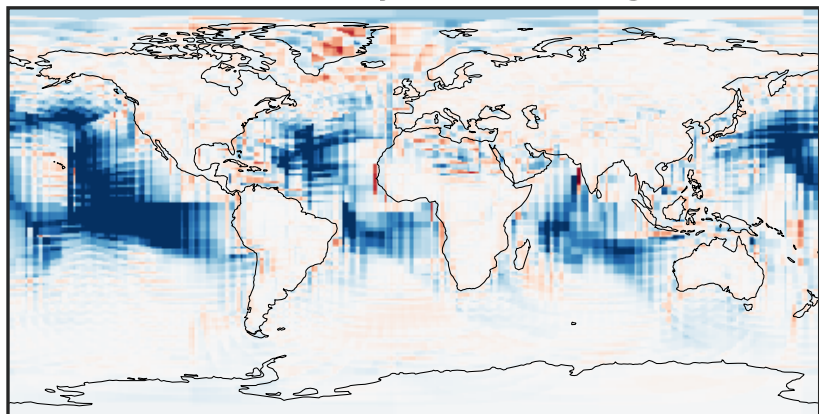
-3.364 -1.682 0.000 1.682 3.364
ppb

Difference (1x1.25)
Dev - Ref, Restricted Range [5%,95%]



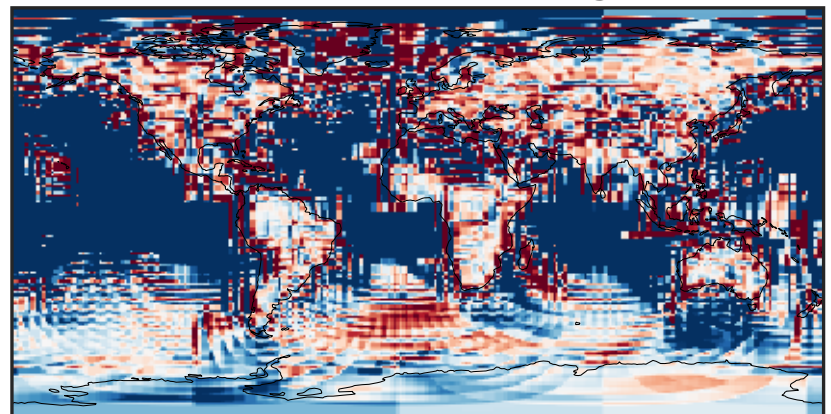
-0.0645 -0.0323 0.0000 0.0323 0.0645
ppb

Ratio (1x1.25)
Dev/Ref, Dynamic Range



1e-03 1e-02 1e-01 1 10 100 1000
unitless

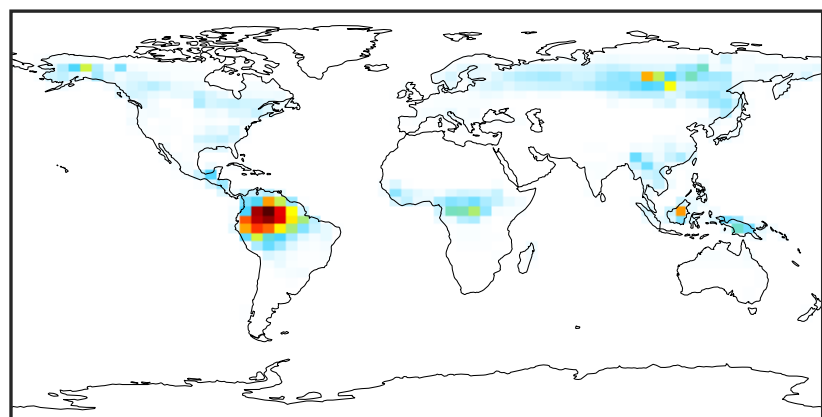
Ratio (1x1.25)
Dev/Ref, Fixed Range



0.50 0.75 1.00 1.50 2.00
unitless

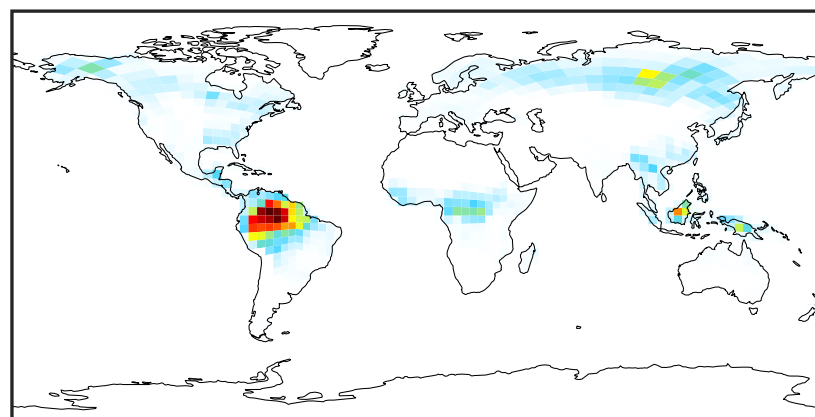
SpeciesConcVV_MTPA (Jul2019)

14.3.0-rc.0 (Ref)
4.0x5.0



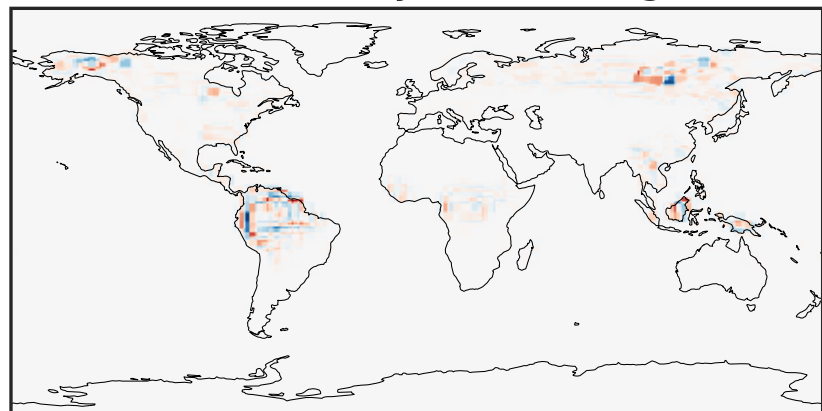
0.000 0.414 0.828 1.242 1.656
ppb

14.3.0-rc.0 (Dev)
c24



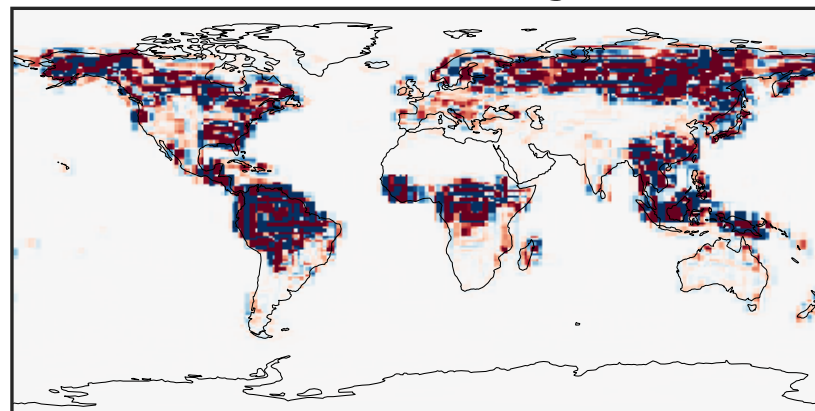
0.000 0.414 0.828 1.242 1.656
ppb

Difference (1x1.25)
Dev - Ref, Dynamic Range



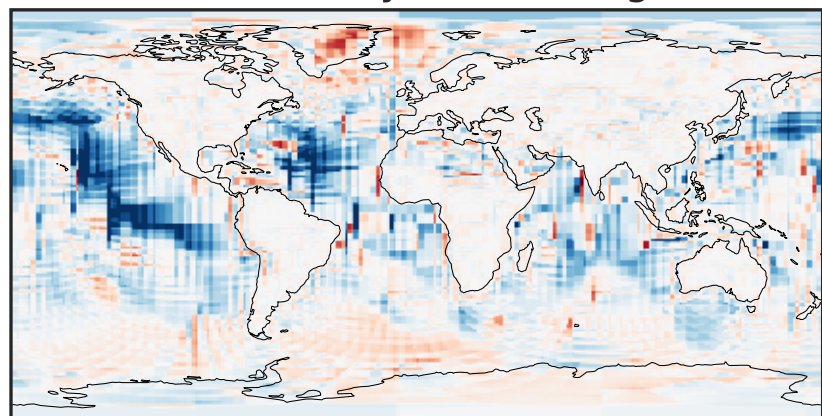
-0.68 -0.34 0.00 0.34 0.68
ppb

Difference (1x1.25)
Dev - Ref, Restricted Range [5%,95%]



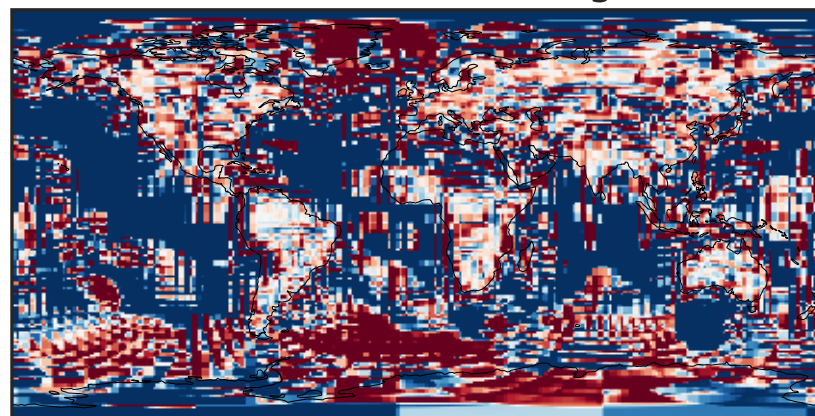
-0.008 0.000 0.008
ppb

Ratio (1x1.25)
Dev/Ref, Dynamic Range



unitless

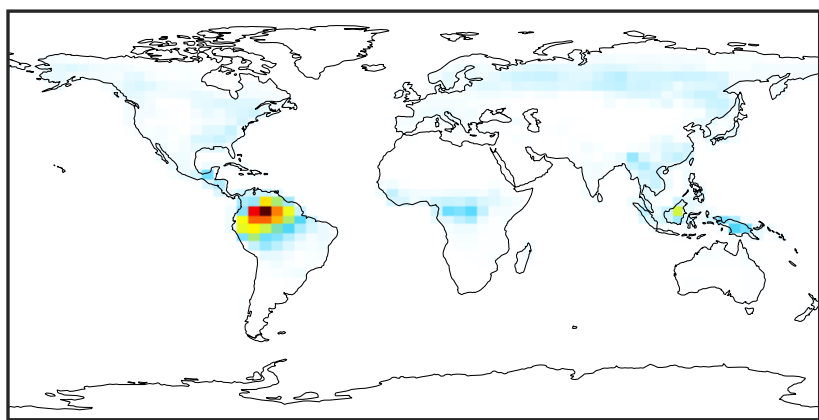
Ratio (1x1.25)
Dev/Ref, Fixed Range



0.50 0.75 1.00 1.50 2.00
unitless

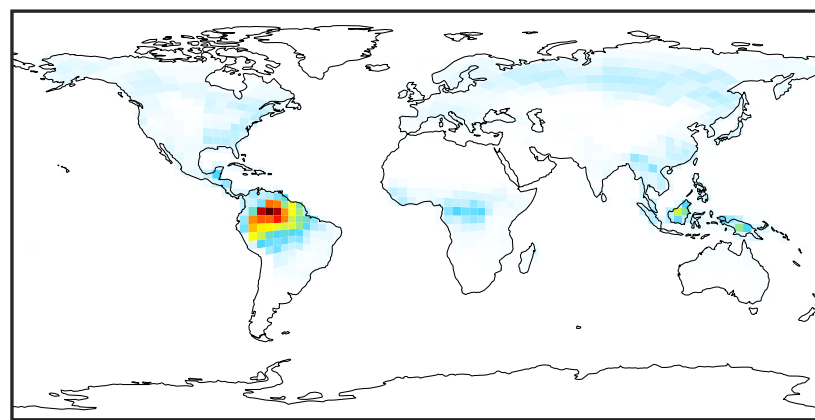
SpeciesConcVV_MTPO (Jul2019)

14.3.0-rc.0 (Ref)
4.0x5.0



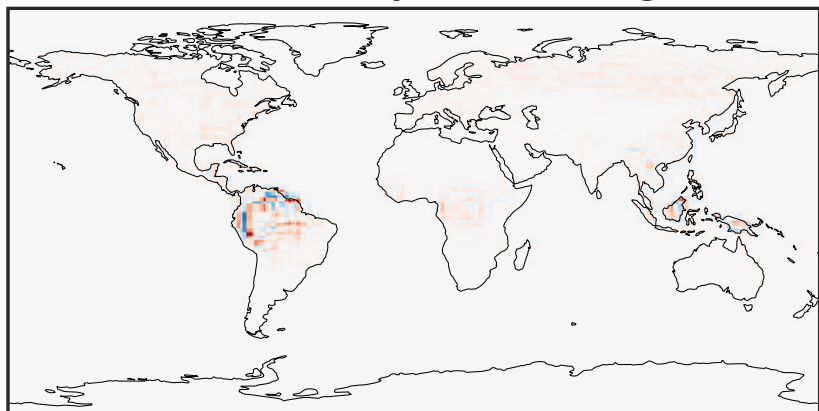
0.0000 0.0254 0.0507 0.0761 0.1015
ppb

14.3.0-rc.0 (Dev)
c24



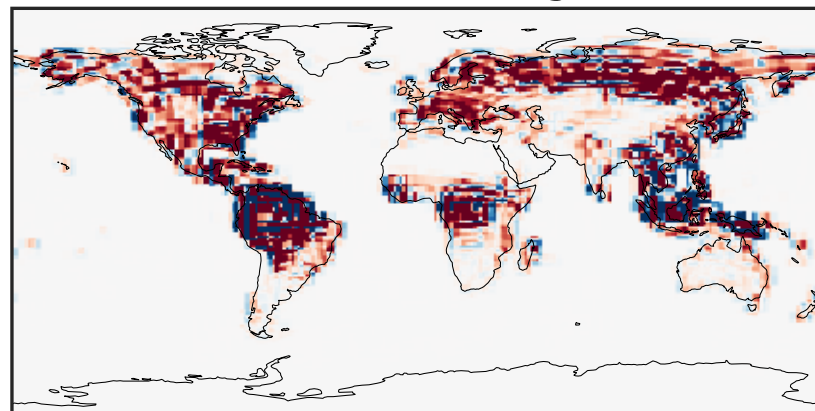
0.0000 0.0254 0.0507 0.0761 0.1015
ppb

Difference (1x1.25)
Dev - Ref, Dynamic Range



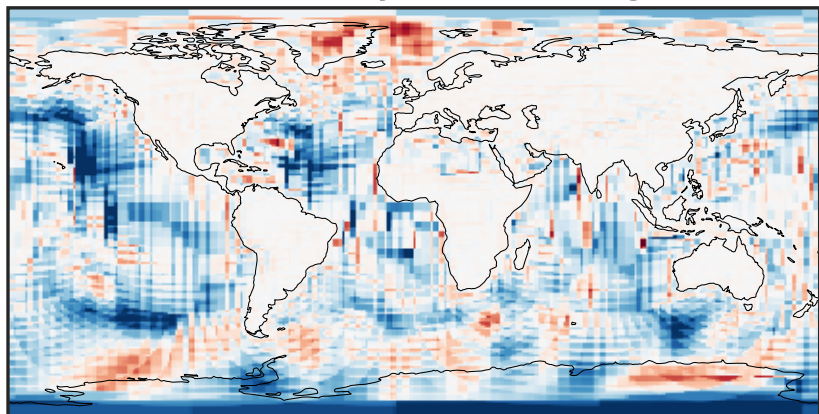
-0.02 0.00 0.02
ppb

Difference (1x1.25)
Dev - Ref, Restricted Range [5%,95%]



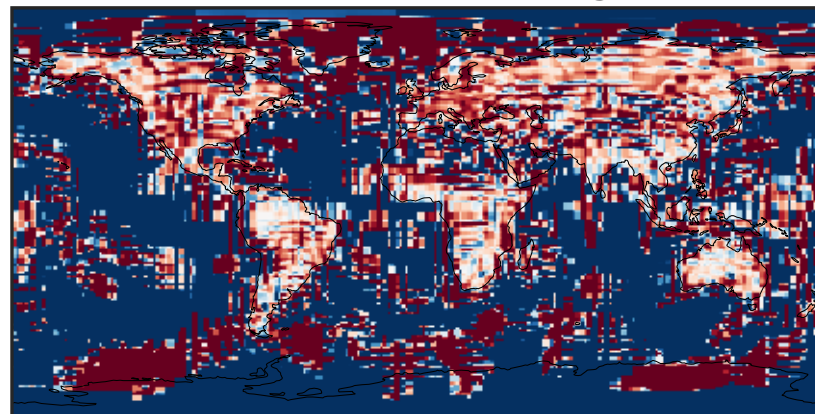
-0.0008 0.0000 0.0008
ppb

Ratio (1x1.25)
Dev/Ref, Dynamic Range



1e-05 1e-02 10 1e4 1e+07
unitless

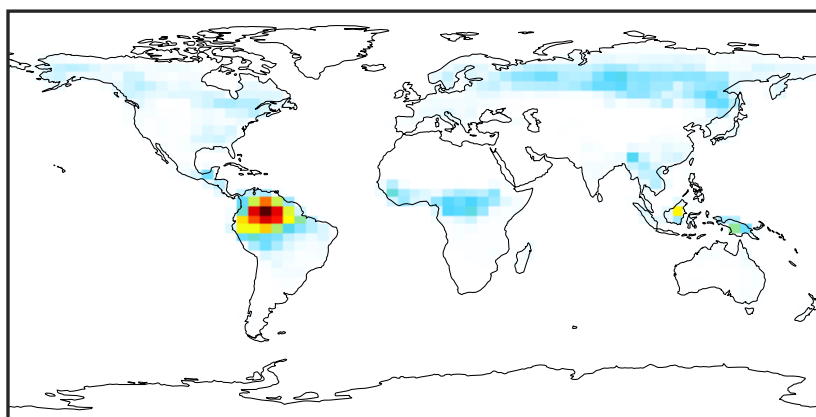
Ratio (1x1.25)
Dev/Ref, Fixed Range



0.50 0.75 1.00 1.50 2.00
unitless

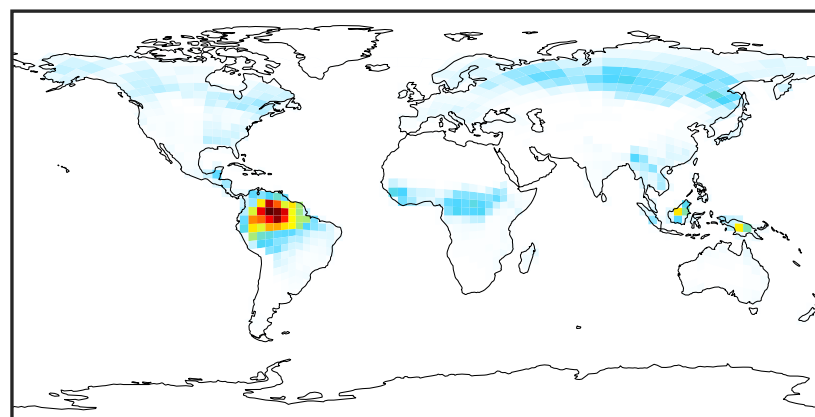
SpeciesConcVV_LIMO (Jul2019)

14.3.0-rc.0 (Ref)
4.0x5.0



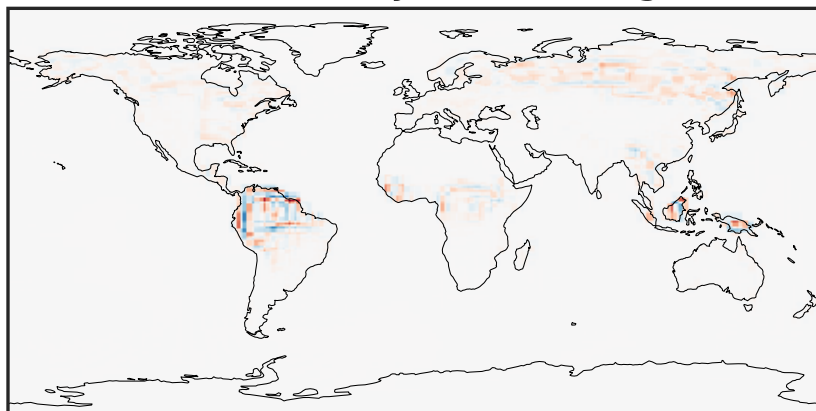
0.000 0.025 0.050 0.075
ppb

14.3.0-rc.0 (Dev)
c24



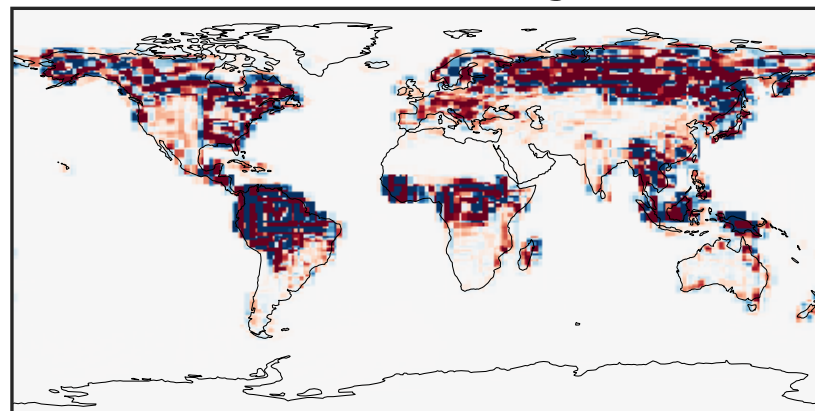
0.000 0.025 0.050 0.075
ppb

Difference (1x1.25)
Dev - Ref, Dynamic Range



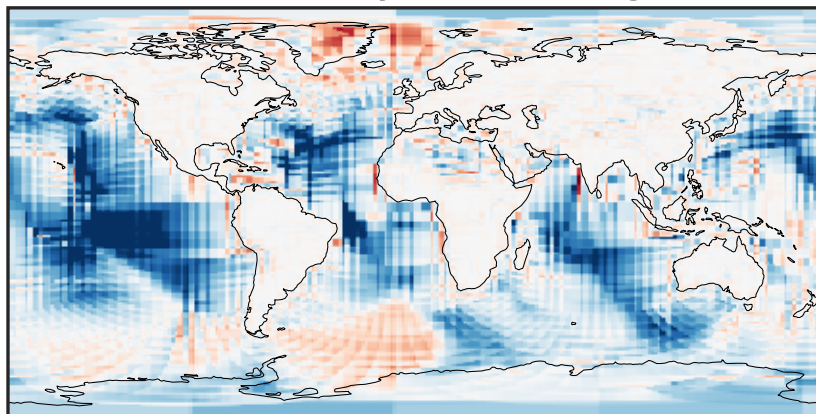
-0.02 0.00 0.02
ppb

Difference (1x1.25)
Dev - Ref, Restricted Range [5%,95%]



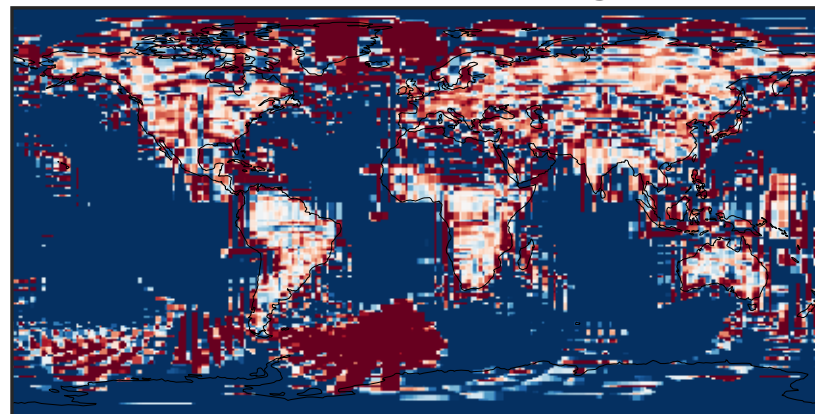
-0.0006 0.0000 0.0006
ppb

Ratio (1x1.25)
Dev/Ref, Dynamic Range



unitless

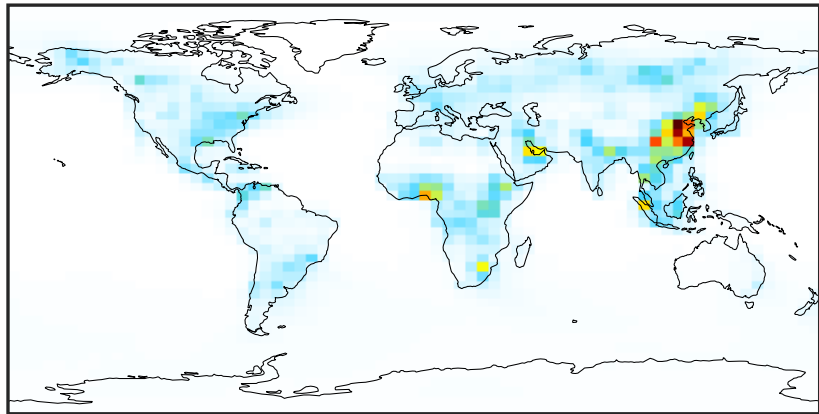
Ratio (1x1.25)
Dev/Ref, Fixed Range



0.50 0.75 1.00 1.50 2.00
unitless

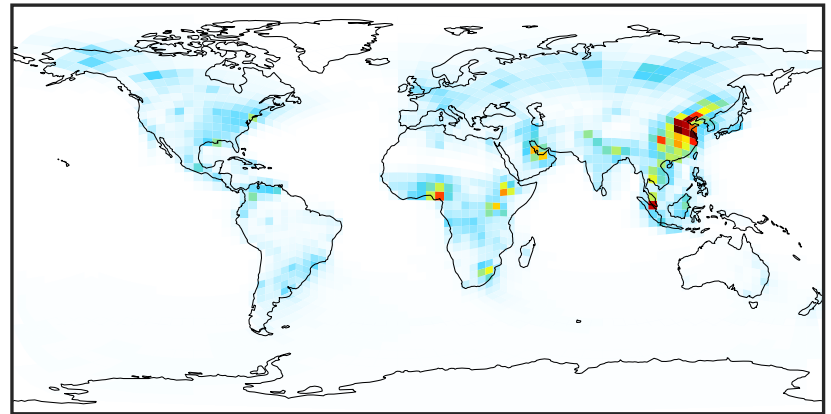
SpeciesConcVV_ALK4 (Jul2019)

14.3.0-rc.0 (Ref)
4.0x5.0



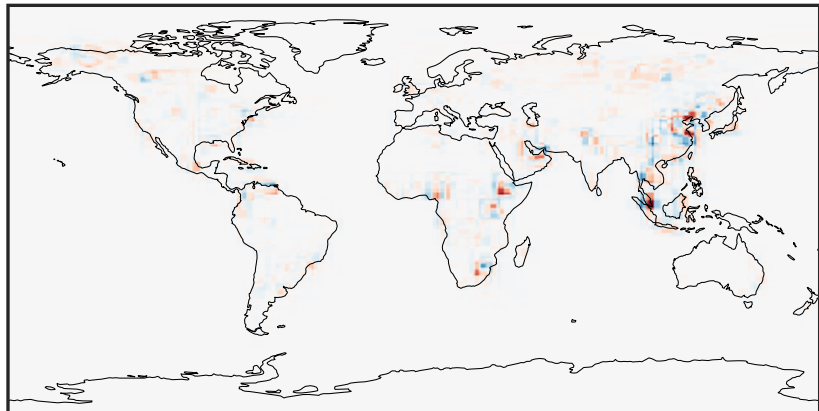
0.000 1.511 3.021 4.532 6.042
ppb

14.3.0-rc.0 (Dev)
c24



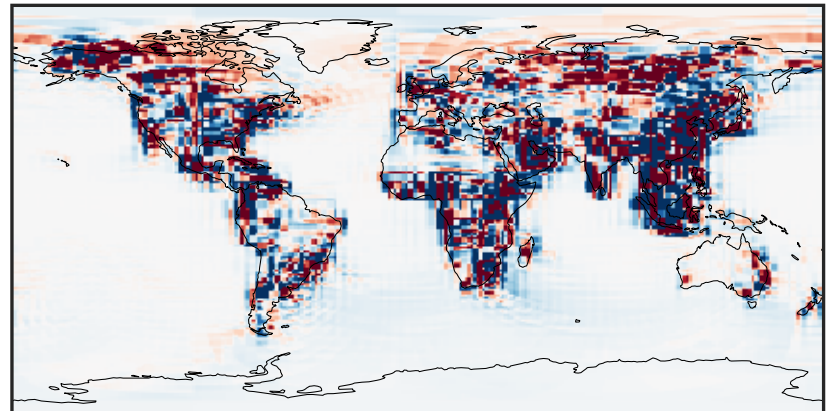
0.000 1.511 3.021 4.532 6.042
ppb

Difference (1x1.25)
Dev - Ref, Dynamic Range



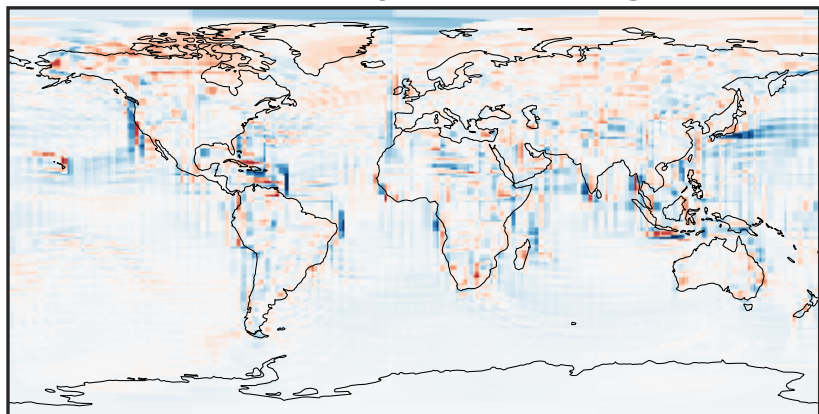
-3.018 -1.509 0.000 1.509 3.018
ppb

Difference (1x1.25)
Dev - Ref, Restricted Range [5%,95%]



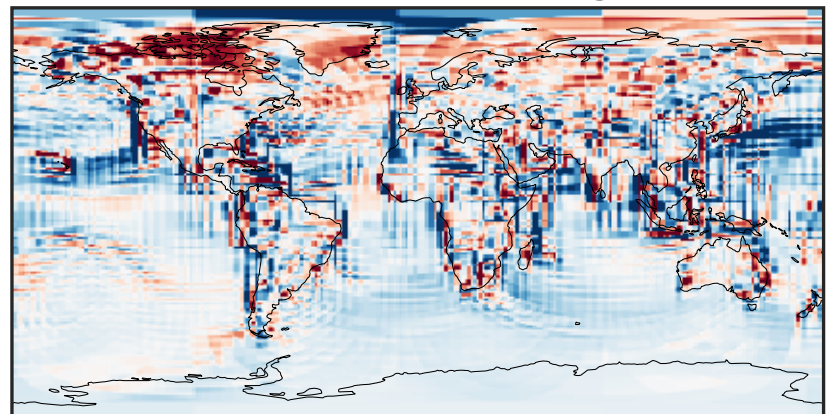
-0.0964 -0.0482 0.0000 0.0482 0.0964
ppb

Ratio (1x1.25)
Dev/Ref, Dynamic Range



0.103 0.552 1.000 5.354 9.708
unitless

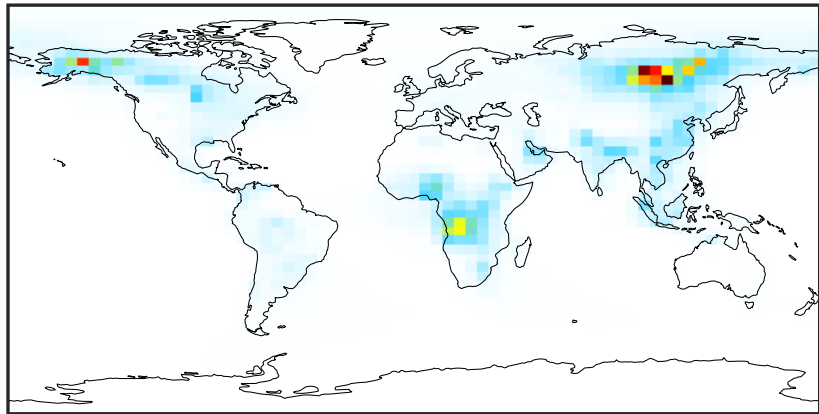
Ratio (1x1.25)
Dev/Ref, Fixed Range



0.50 0.75 1.00 1.50 2.00
unitless

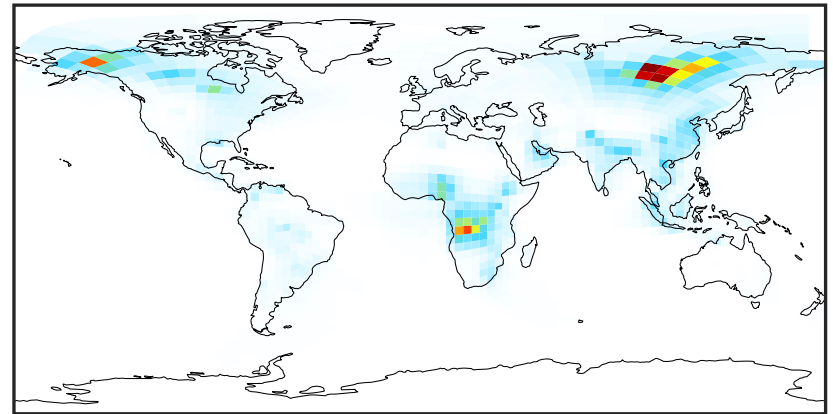
SpeciesConcVV_BENZ (Jul2019)

14.3.0-rc.0 (Ref)
4.0x5.0



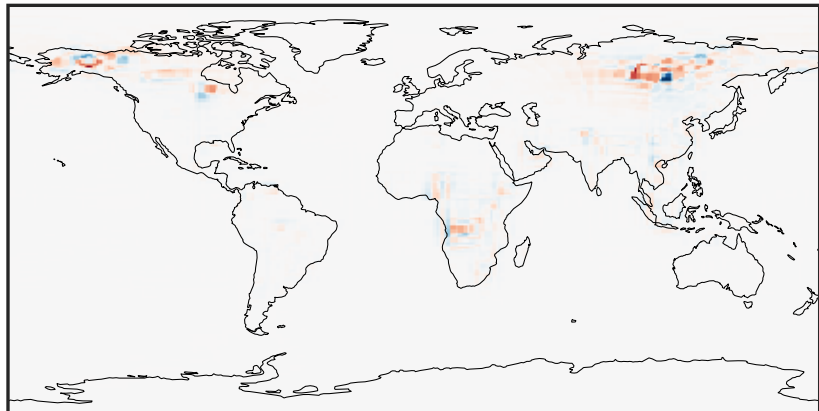
0.000 0.530 1.059 1.589 2.119
ppb

14.3.0-rc.0 (Dev)
c24



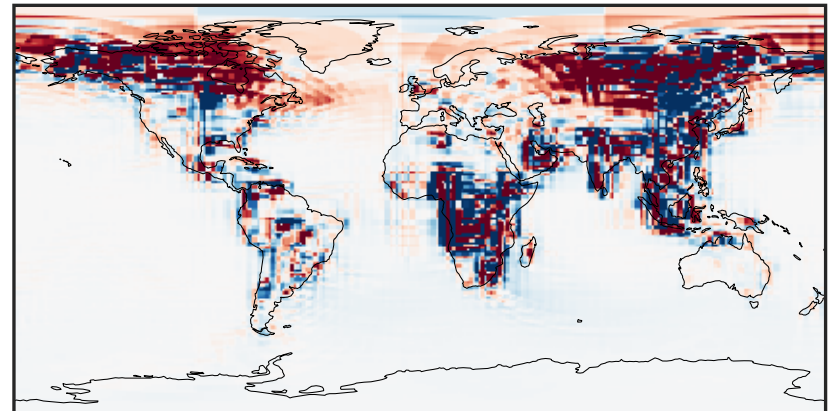
0.000 0.530 1.059 1.589 2.119
ppb

Difference (1x1.25)
Dev - Ref, Dynamic Range



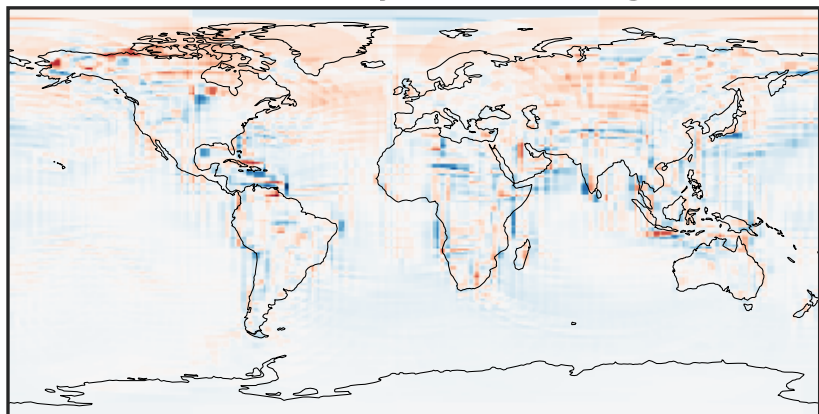
-1.210 -0.605 0.000 0.605 1.210
ppb

Difference (1x1.25)
Dev - Ref, Restricted Range [5%,95%]



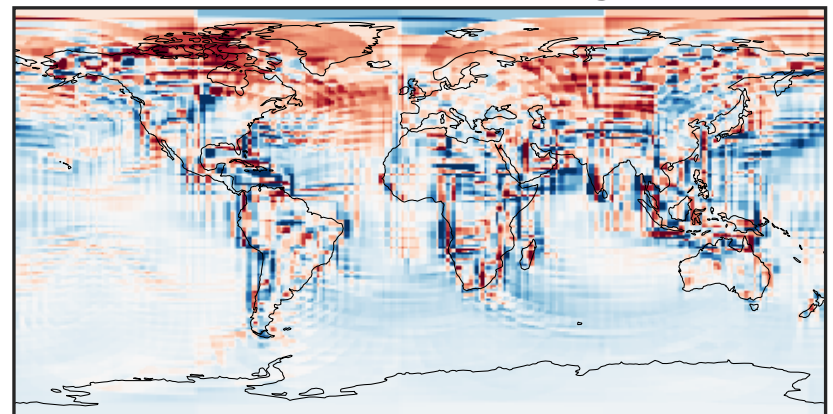
-0.015 0.000 0.015
ppb

Ratio (1x1.25)
Dev/Ref, Dynamic Range



0.110 0.555 1.000 5.040 9.081
unitless

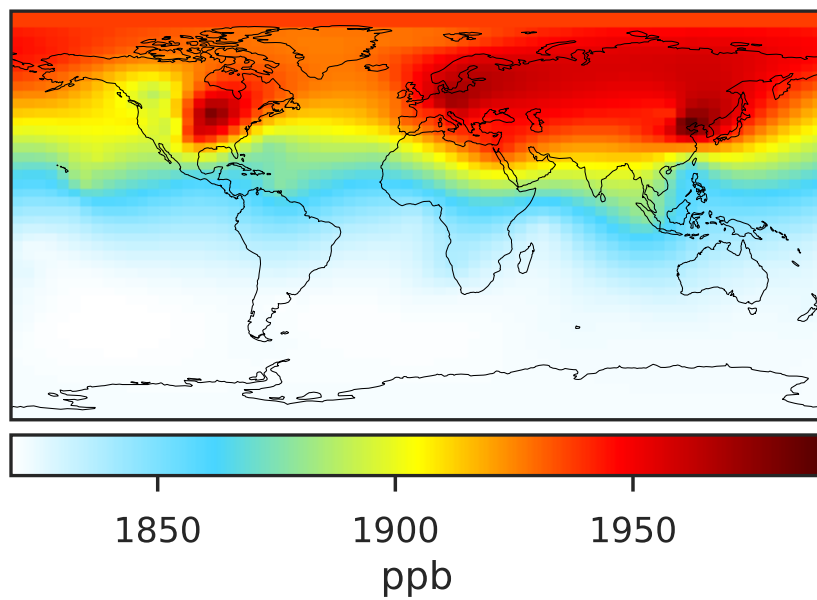
Ratio (1x1.25)
Dev/Ref, Fixed Range



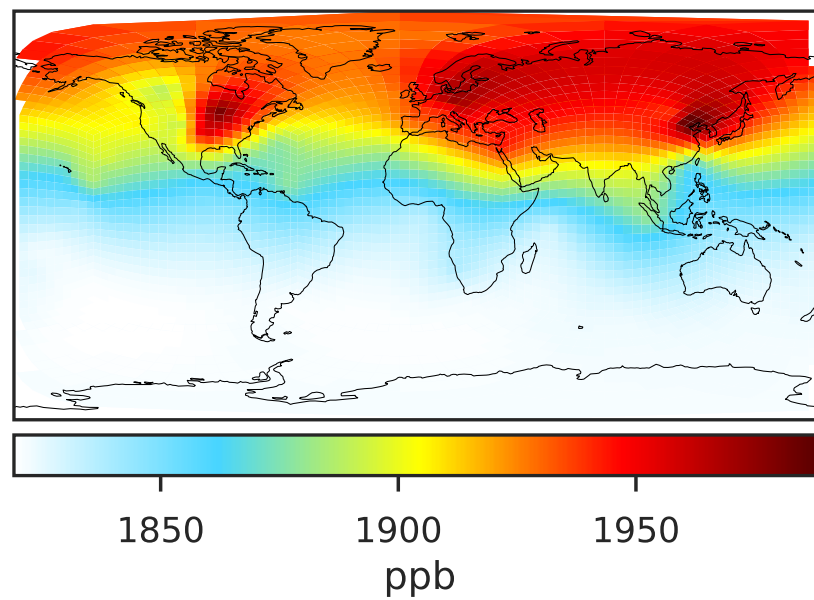
0.50 0.75 1.00 1.50 2.00
unitless

SpeciesConcVV_CH4 (Jul2019)

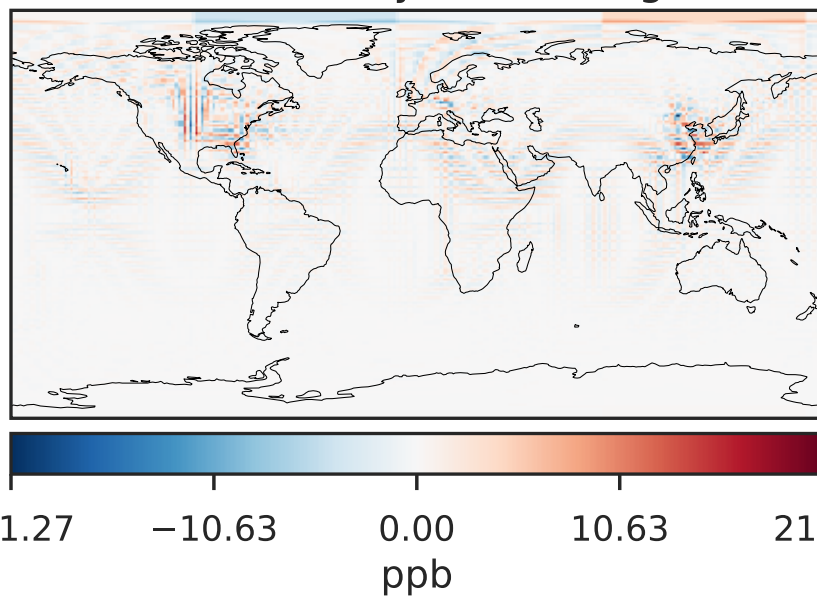
14.3.0-rc.0 (Ref)
4.0x5.0



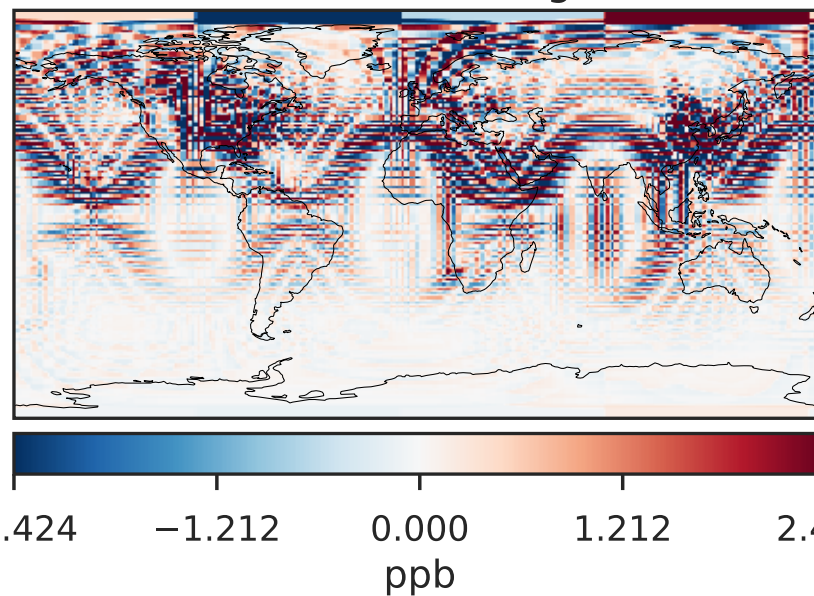
14.3.0-rc.0 (Dev)
c24



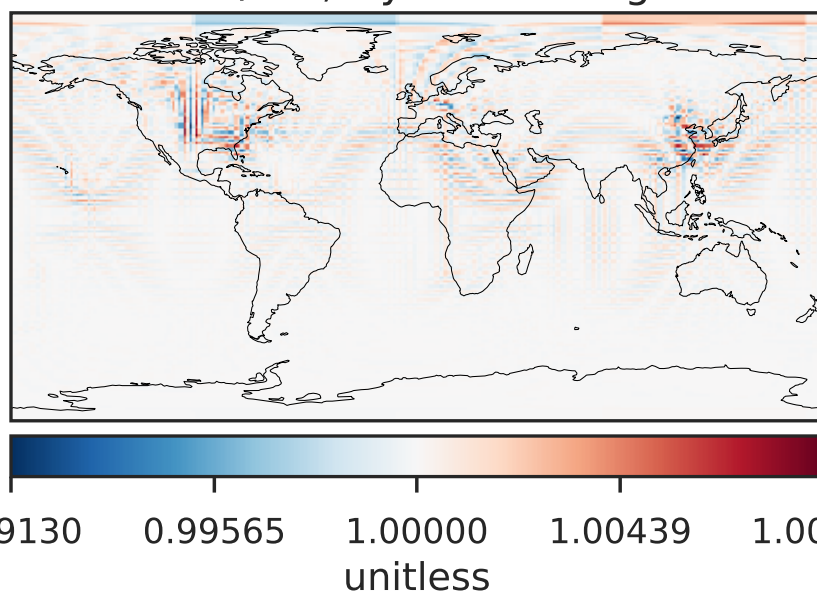
Difference (1x1.25)
Dev - Ref, Dynamic Range



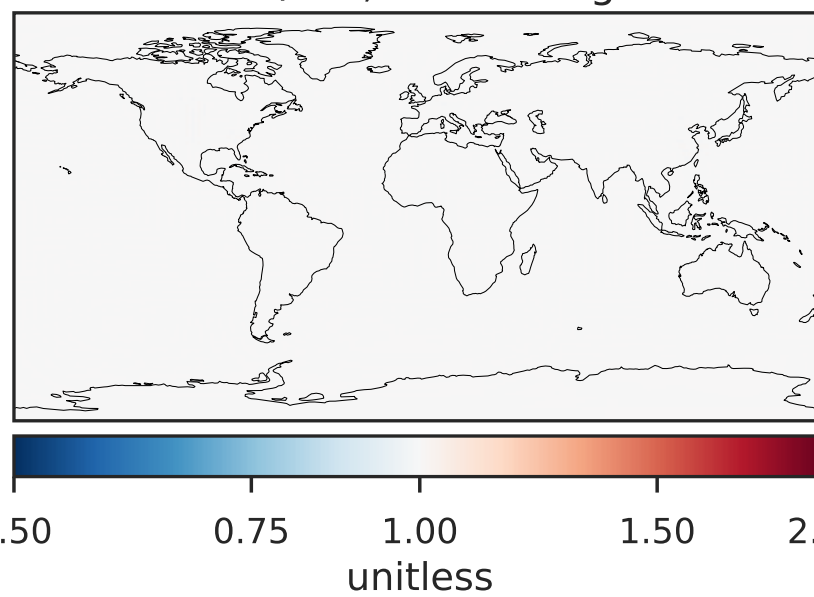
Difference (1x1.25)
Dev - Ref, Restricted Range [5%,95%]



Ratio (1x1.25)
Dev/Ref, Dynamic Range

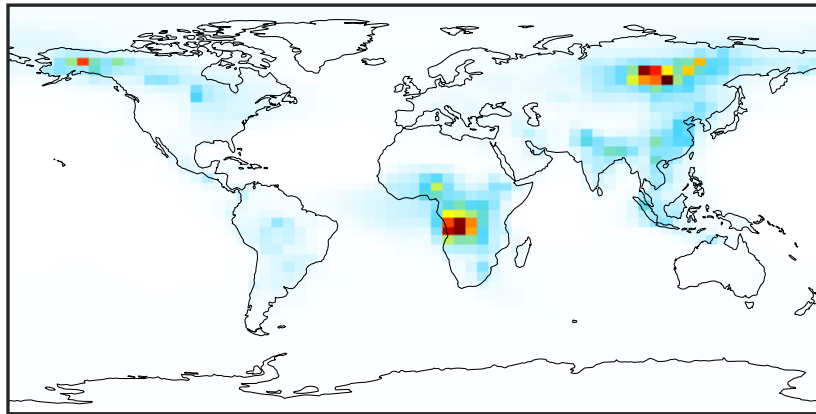


Ratio (1x1.25)
Dev/Ref, Fixed Range



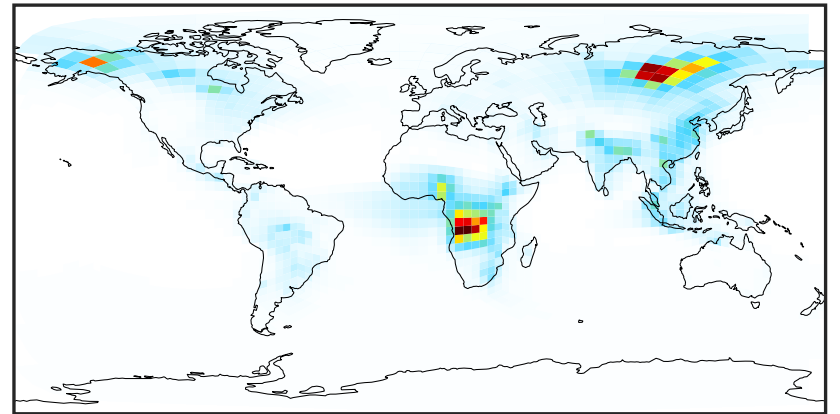
SpeciesConcVW_C2H2 (Jul2019)

14.3.0-rc.0 (Ref)
4.0x5.0



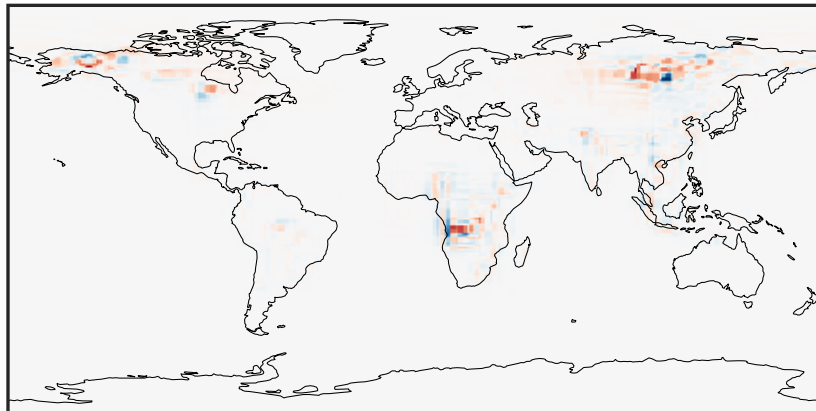
0.003 0.799 1.594 2.390 3.185
ppb

14.3.0-rc.0 (Dev)
c24



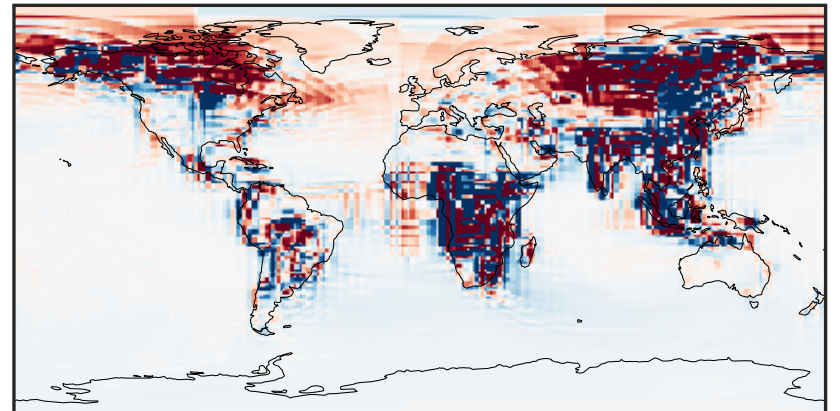
0.003 0.799 1.594 2.390 3.185
ppb

Difference (1x1.25)
Dev - Ref, Dynamic Range



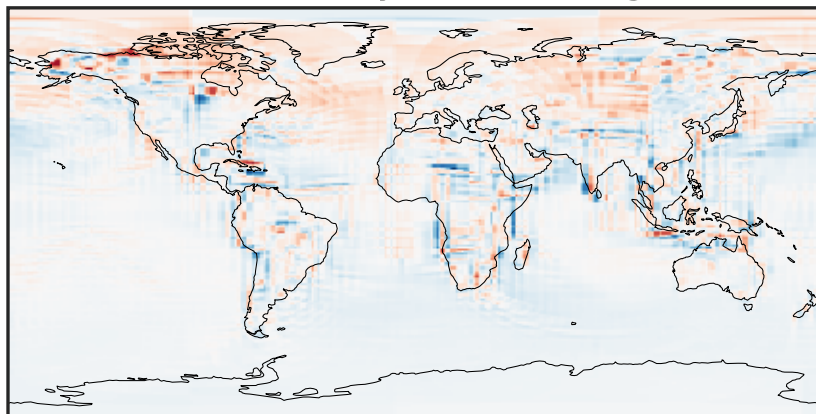
-1.787 -0.894 0.000 0.894 1.787
ppb

Difference (1x1.25)
Dev - Ref, Restricted Range [5%,95%]



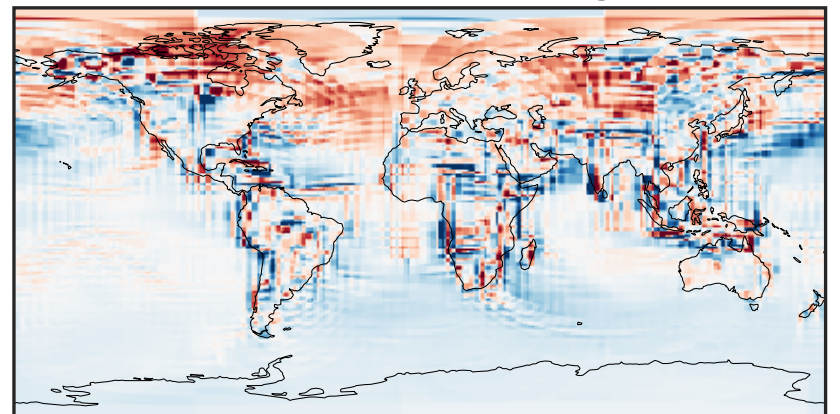
-0.02 0.00 0.02
ppb

Ratio (1x1.25)
Dev/Ref, Dynamic Range



0.164 0.582 1.000 3.558 6.116
unitless

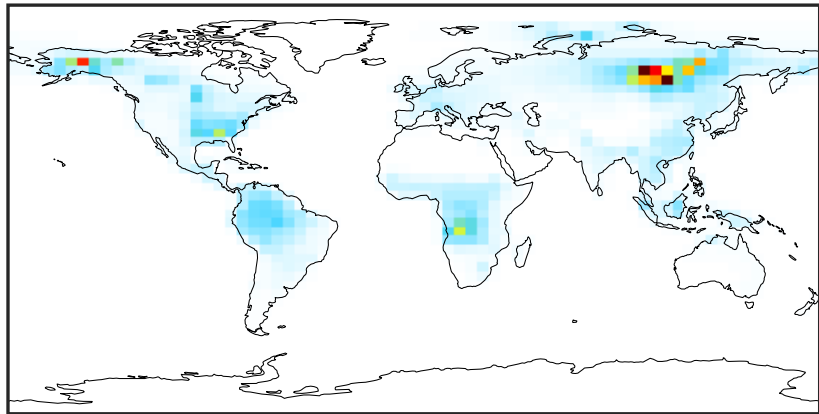
Ratio (1x1.25)
Dev/Ref, Fixed Range



0.50 0.75 1.00 1.50 2.00
unitless

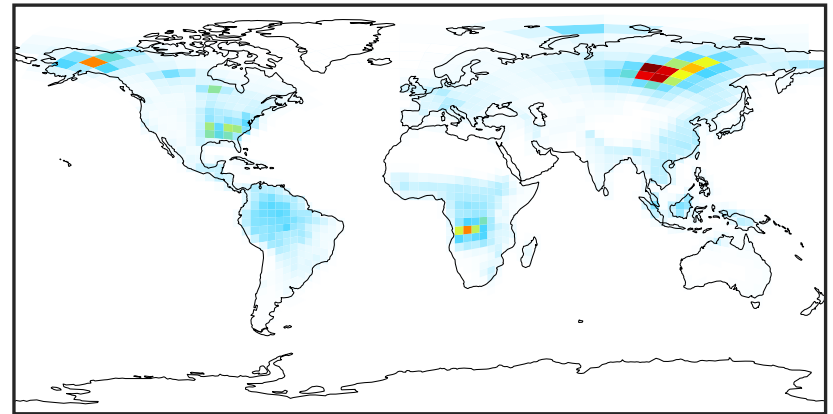
SpeciesConcVW_C2H4 (Jul2019)

14.3.0-rc.0 (Ref)
4.0x5.0



0.00 3.40 6.79 10.19 13.59
ppb

14.3.0-rc.0 (Dev)
c24



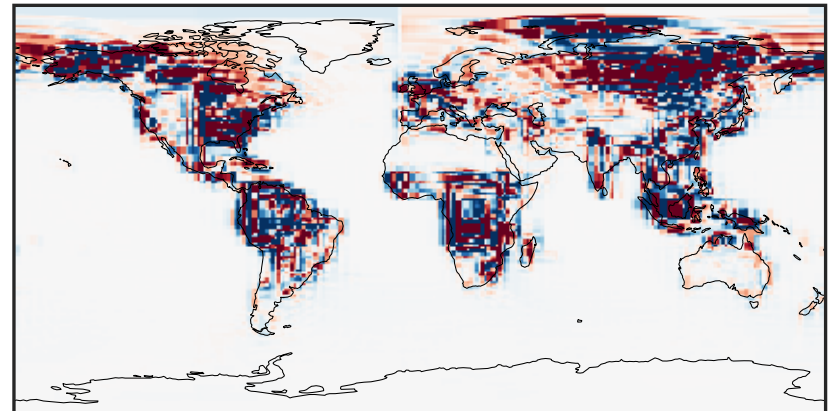
0.00 3.40 6.79 10.19 13.59
ppb

Difference (1x1.25)
Dev - Ref, Dynamic Range



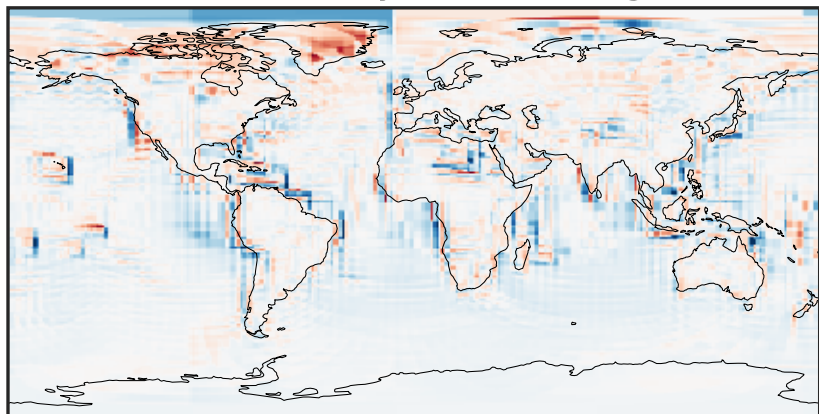
-8.12 -4.06 0.00 4.06 8.12
ppb

Difference (1x1.25)
Dev - Ref, Restricted Range [5%,95%]



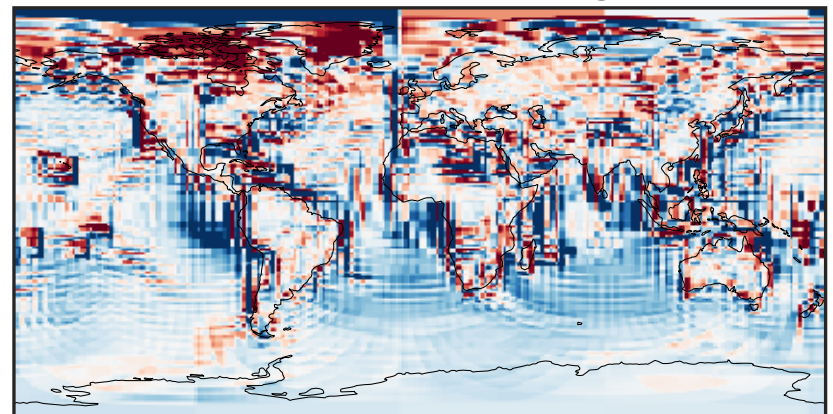
-0.1444 -0.0722 0.0000 0.0722 0.1444
ppb

Ratio (1x1.25)
Dev/Ref, Dynamic Range



1e-01 1 10
unitless

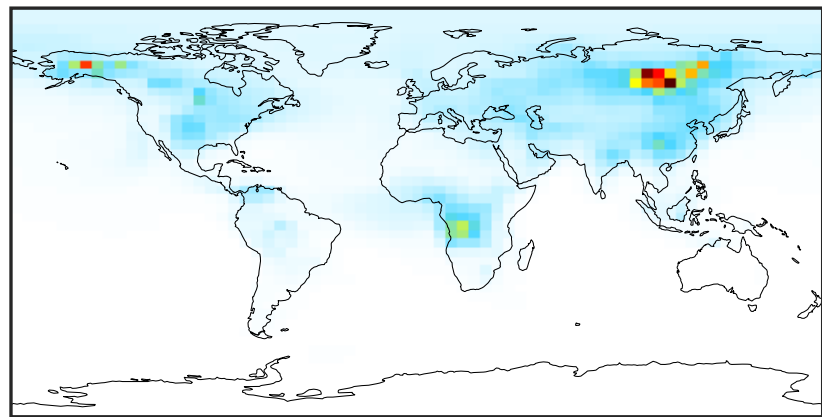
Ratio (1x1.25)
Dev/Ref, Fixed Range



0.50 0.75 1.00 1.50 2.00
unitless

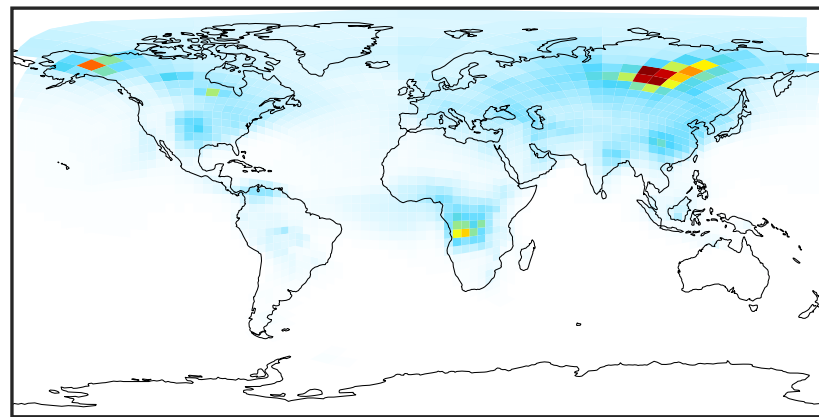
SpeciesConcVW_C2H6 (Jul2019)

14.3.0-rc.0 (Ref)
4.0x5.0



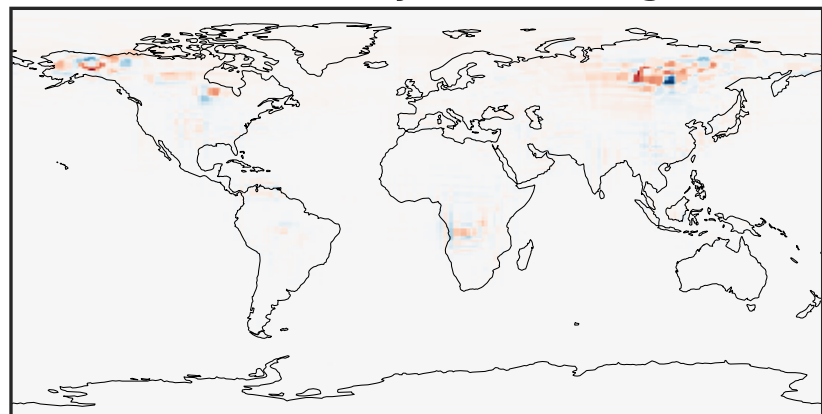
0.08 2.64 5.20 7.77 10.33
ppb

14.3.0-rc.0 (Dev)
c24



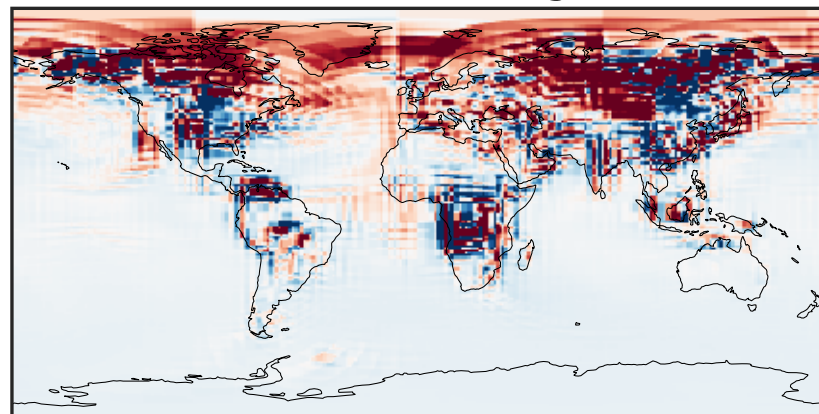
0.08 2.64 5.20 7.77 10.33
ppb

Difference (1x1.25)
Dev - Ref, Dynamic Range



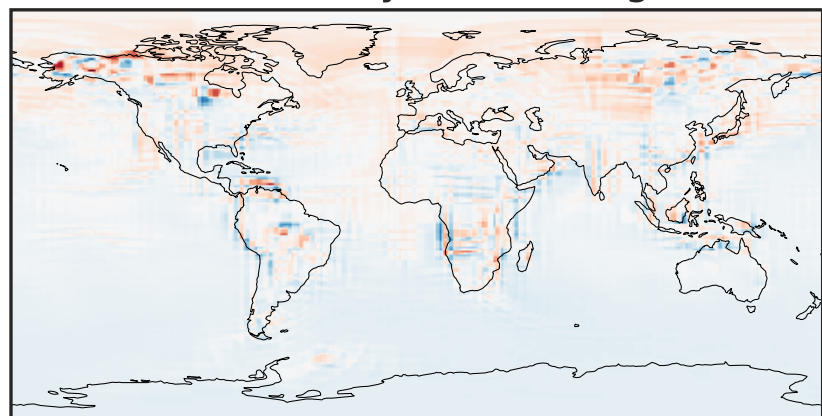
-5.39 -2.69 0.00 2.69 5.39
ppb

Difference (1x1.25)
Dev - Ref, Restricted Range [5%,95%]



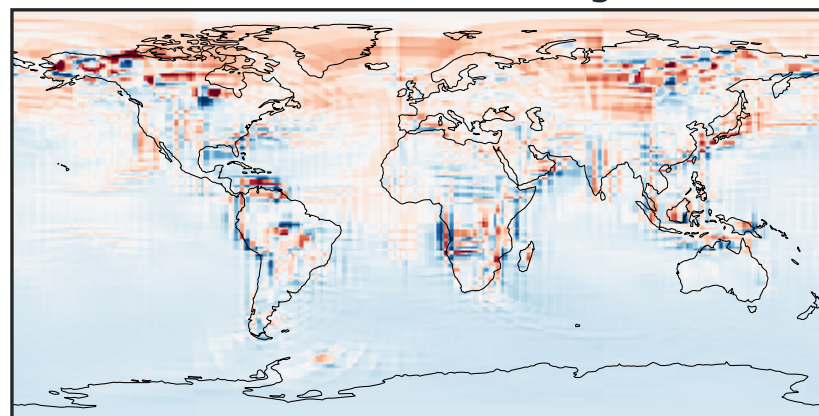
-0.1586 -0.0793 0.0000 0.0793 0.1586
ppb

Ratio (1x1.25)
Dev/Ref, Dynamic Range



0.240 0.620 1.000 2.579 4.158
unitless

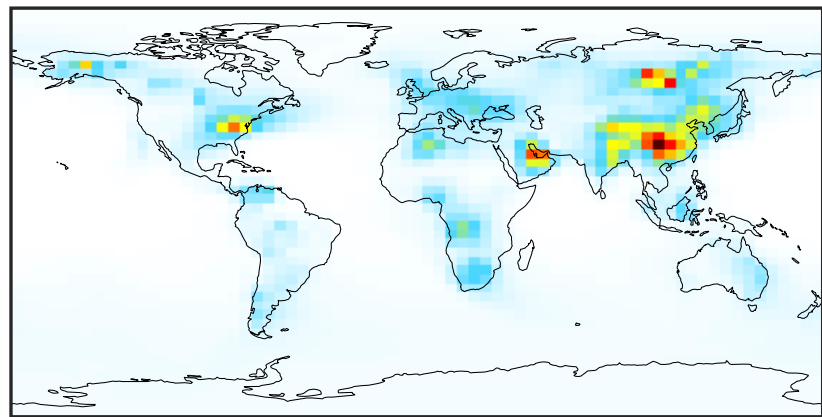
Ratio (1x1.25)
Dev/Ref, Fixed Range



0.50 0.75 1.00 1.50 2.00
unitless

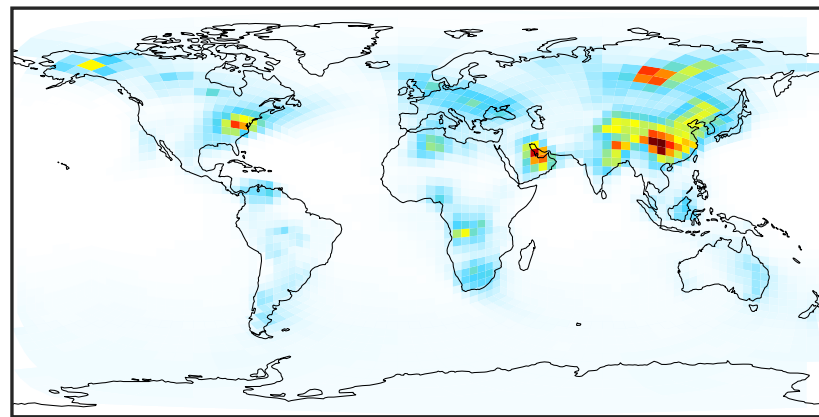
SpeciesConcVW_C3H8 (Jul2019)

14.3.0-rc.0 (Ref)
4.0x5.0



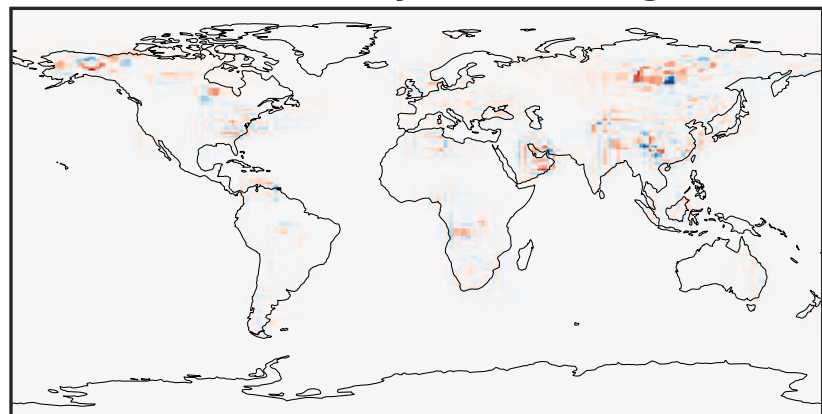
0.001 0.647 1.294 1.940 2.587
ppb

14.3.0-rc.0 (Dev)
c24



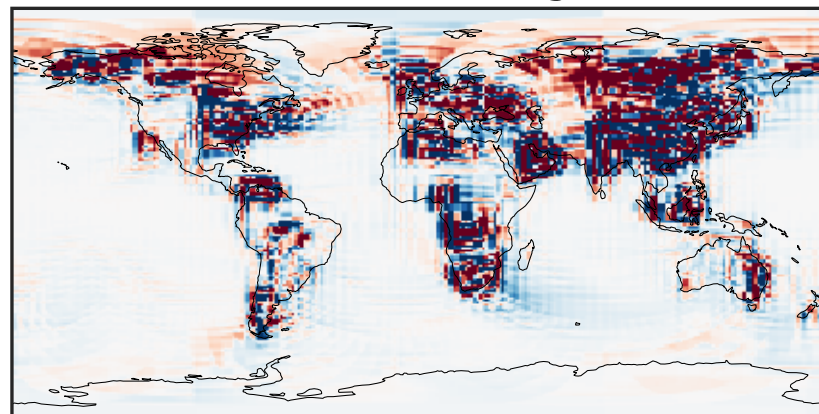
0.001 0.647 1.294 1.940 2.587
ppb

Difference (1x1.25)
Dev - Ref, Dynamic Range



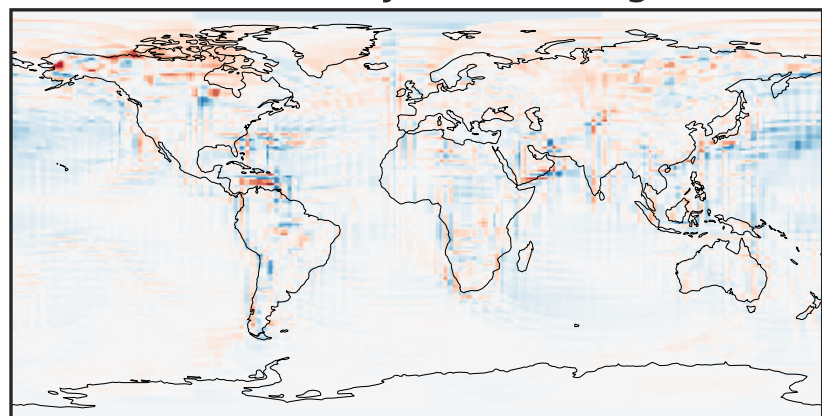
-1.163 -0.582 0.000 0.582 1.163
ppb

Difference (1x1.25)
Dev - Ref, Restricted Range [5%,95%]



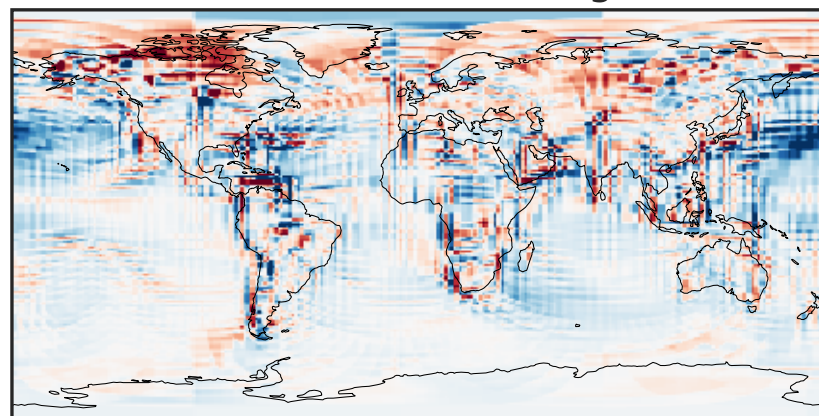
-0.025 0.000 0.025
ppb

Ratio (1x1.25)
Dev/Ref, Dynamic Range



0.128 0.564 1.000 4.403 7.806
unitless

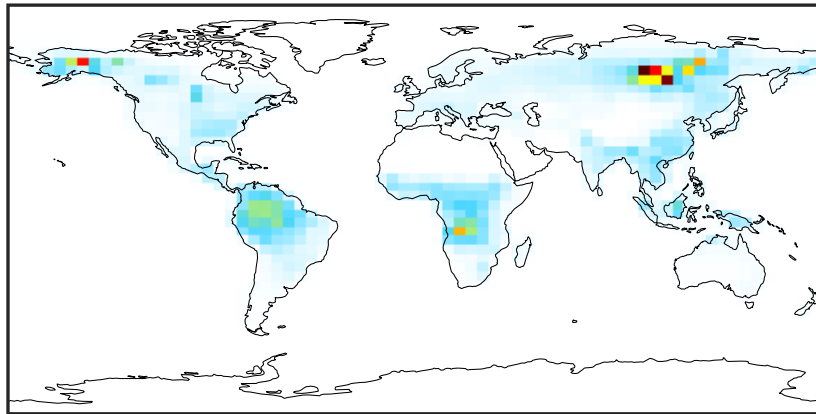
Ratio (1x1.25)
Dev/Ref, Fixed Range



0.50 0.75 1.00 1.50 2.00
unitless

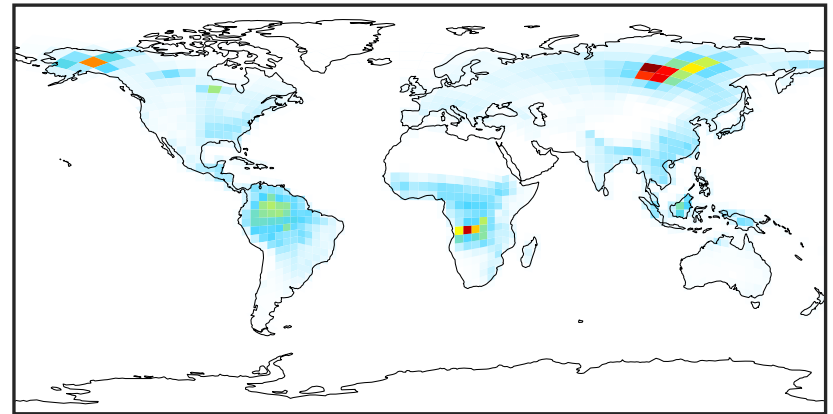
SpeciesConcVV_PRPE (Jul2019)

14.3.0-rc.0 (Ref)
4.0x5.0



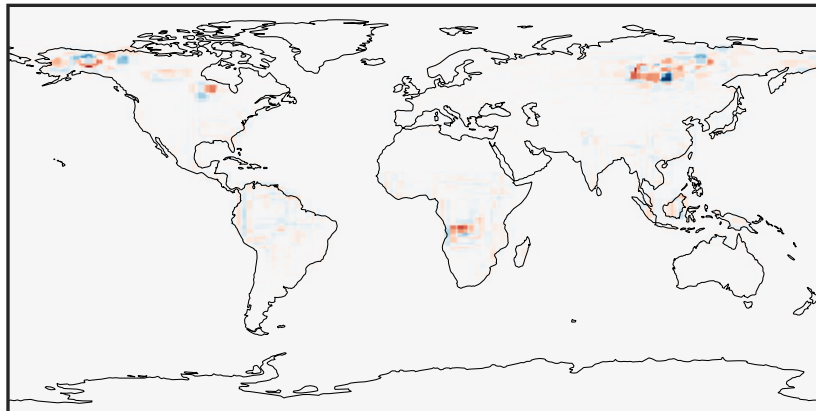
0.000 1.205 2.410 3.615 4.820
ppb

14.3.0-rc.0 (Dev)
c24



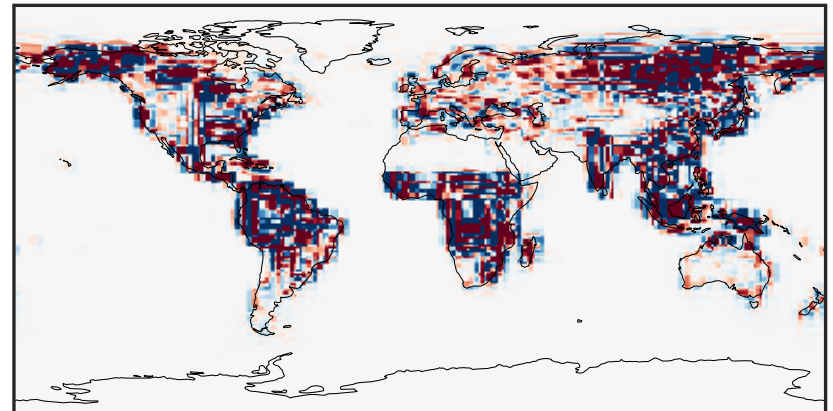
0.000 1.205 2.410 3.615 4.820
ppb

Difference (1x1.25)
Dev - Ref, Dynamic Range



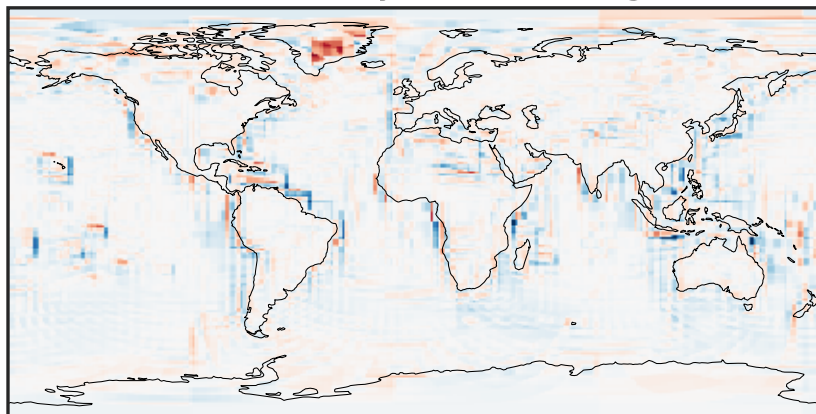
-2.896 -1.448 0.000 1.448 2.896
ppb

Difference (1x1.25)
Dev - Ref, Restricted Range [5%,95%]



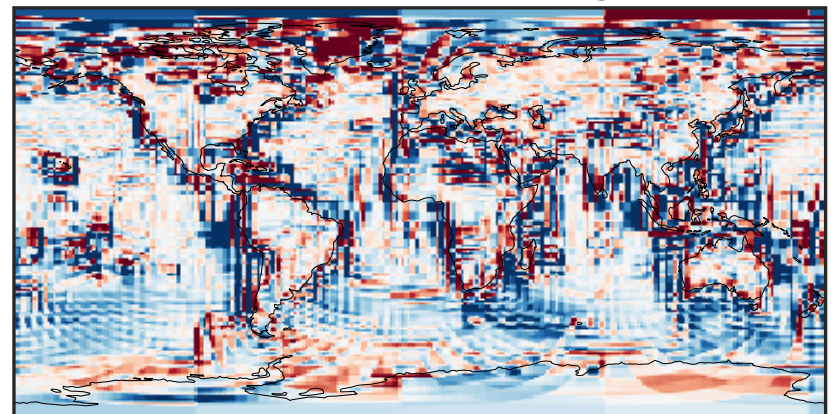
-0.0516 -0.0258 0.0000 0.0258 0.0516
ppb

Ratio (1x1.25)
Dev/Ref, Dynamic Range



1e-02 1e-01 1 10 100
unitless

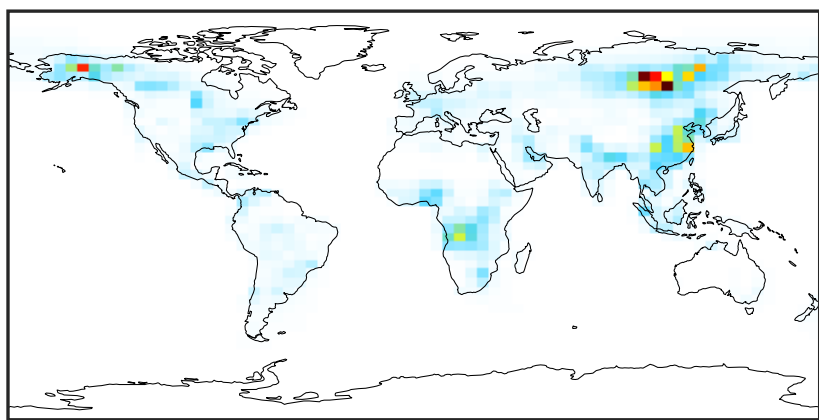
Ratio (1x1.25)
Dev/Ref, Fixed Range



0.50 0.75 1.00 1.50 2.00
unitless

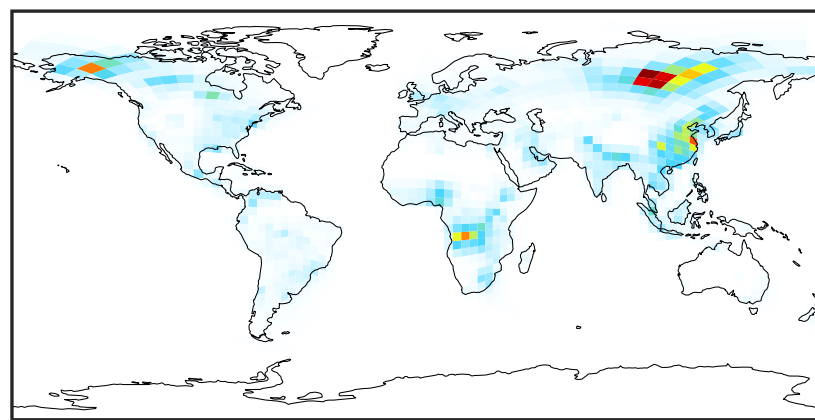
SpeciesConcVV_TOLU (Jul2019)

14.3.0-rc.0 (Ref)
4.0x5.0



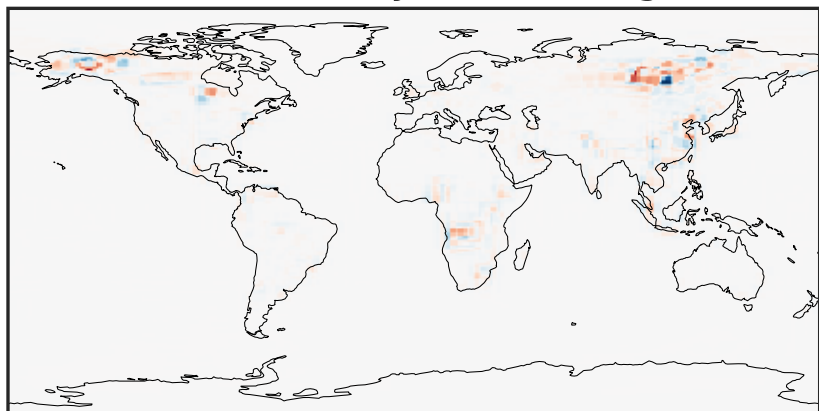
0.0000 0.2451 0.4901 0.7352 0.9803
ppb

14.3.0-rc.0 (Dev)
c24



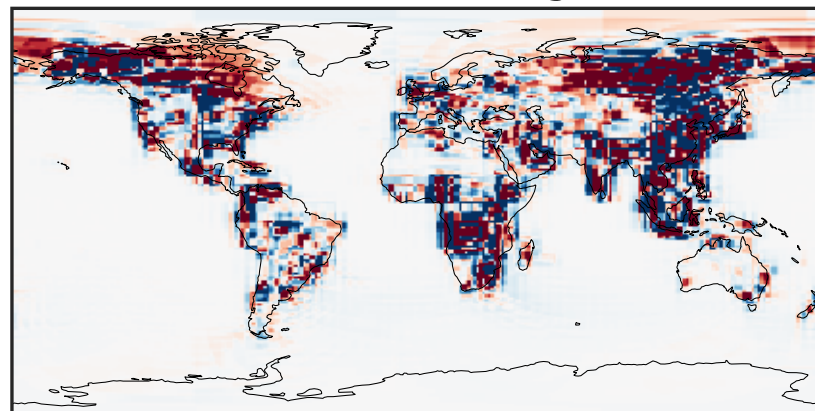
0.0000 0.2451 0.4901 0.7352 0.9803
ppb

Difference (1x1.25)
Dev - Ref, Dynamic Range



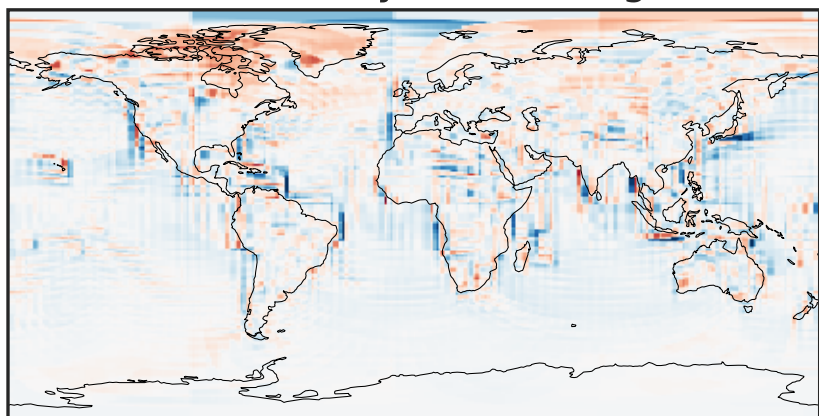
-0.596 -0.298 0.000 0.298 0.596
ppb

Difference (1x1.25)
Dev - Ref, Restricted Range [5%,95%]



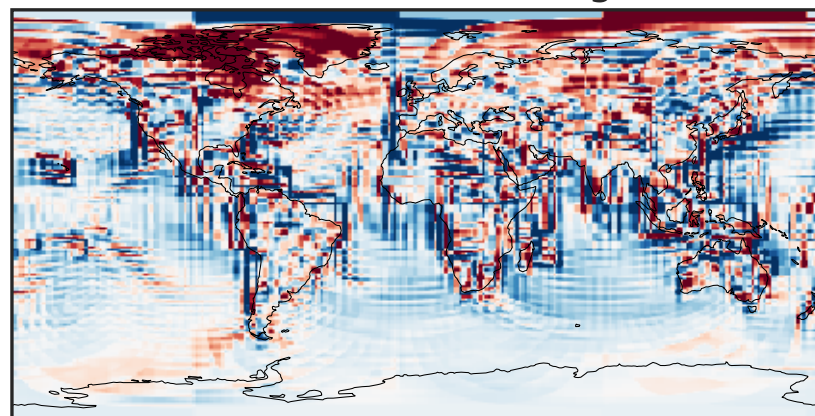
-0.006 0.000 0.006
ppb

Ratio (1x1.25)
Dev/Ref, Dynamic Range



1e-01 1 10
unitless

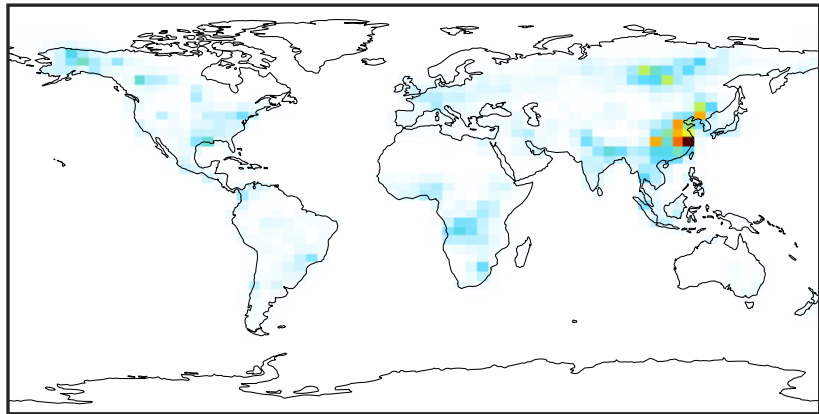
Ratio (1x1.25)
Dev/Ref, Fixed Range



0.50 0.75 1.00 1.50 2.00
unitless

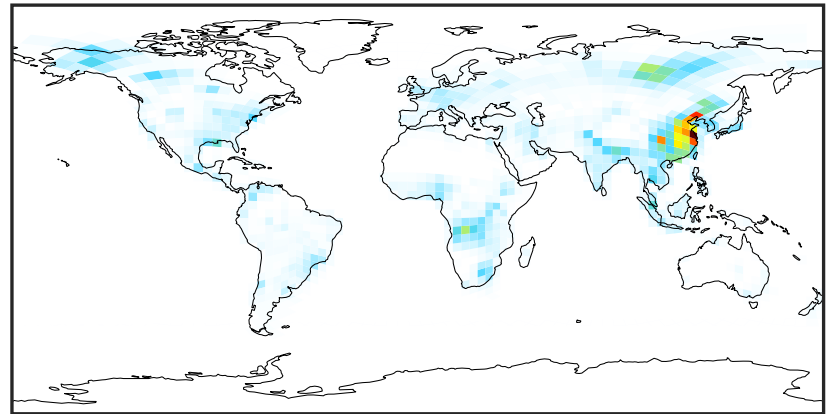
SpeciesConcVV_XYLE (Jul2019)

14.3.0-rc.0 (Ref)
4.0x5.0



0.0000 0.1370 0.2739 0.4109 0.5479
ppb

14.3.0-rc.0 (Dev)
c24



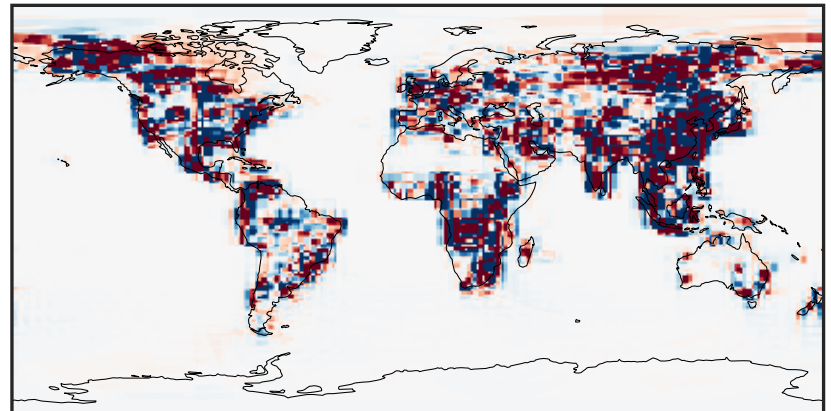
0.0000 0.1370 0.2739 0.4109 0.5479
ppb

Difference (1x1.25)
Dev - Ref, Dynamic Range



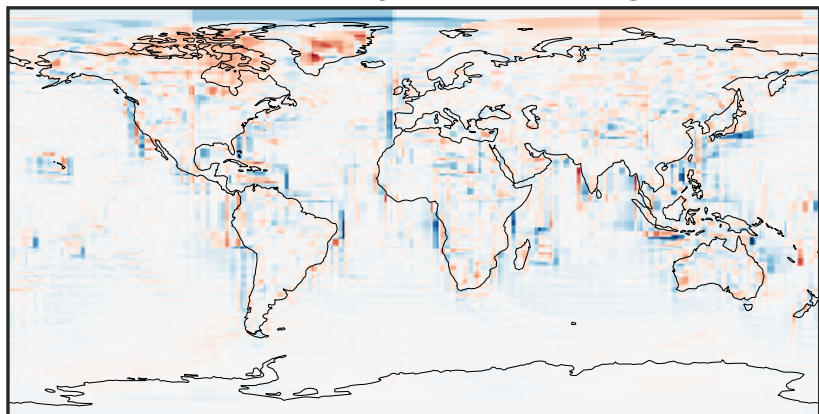
-0.4125 -0.2063 0.0000 0.2063 0.4125
ppb

Difference (1x1.25)
Dev - Ref, Restricted Range [5%,95%]



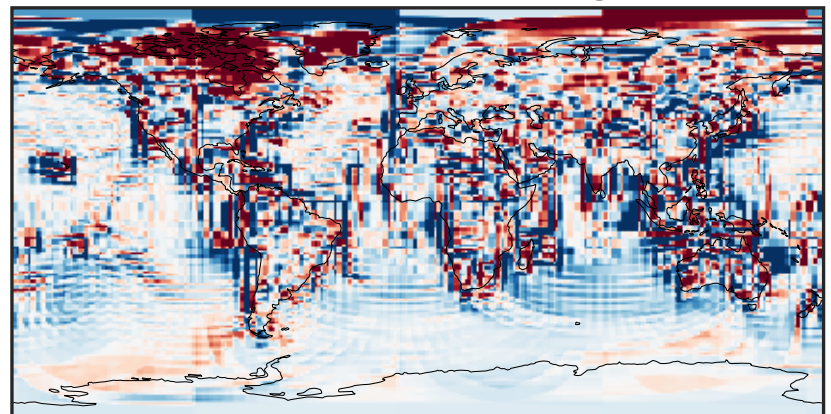
-0.003 0.000 0.003
ppb

Ratio (1x1.25)
Dev/Ref, Dynamic Range



1e-01 1 10
unitless

Ratio (1x1.25)
Dev/Ref, Fixed Range



0.50 0.75 1.00 1.50 2.00
unitless