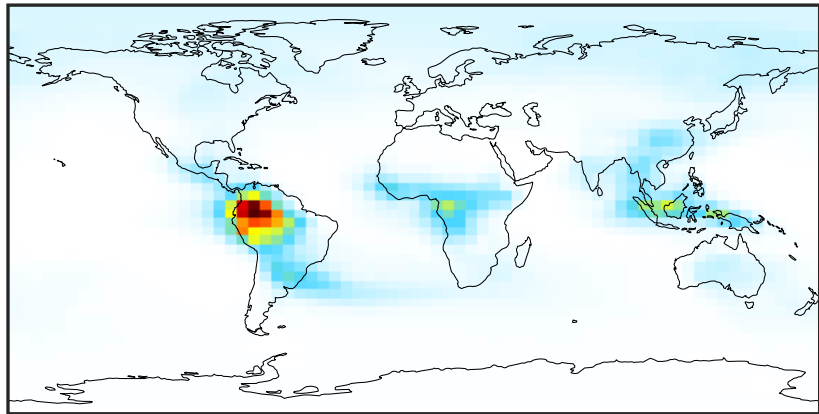


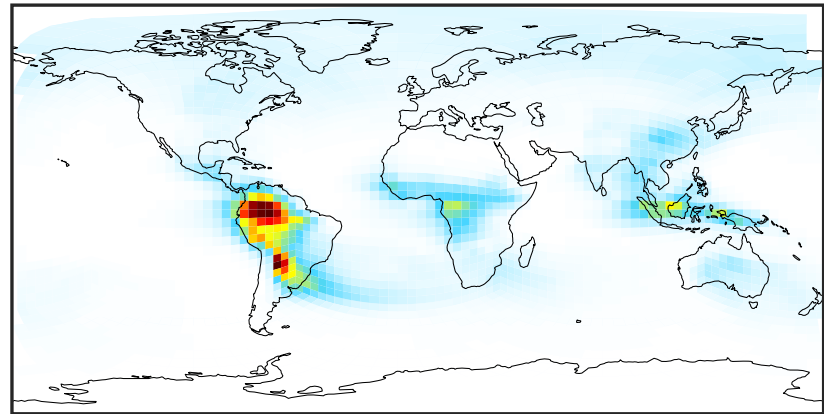
# SpeciesConcVW\_EOH (Oct2019)

14.3.0-rc.0 (Ref)  
4.0x5.0



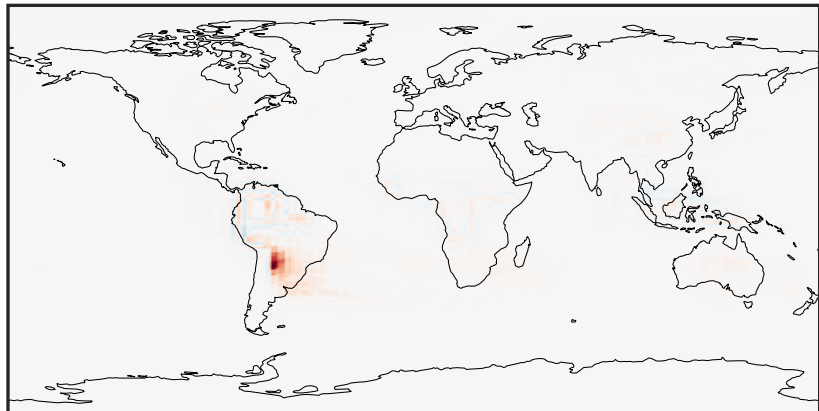
0.0001 0.0463 0.0925 0.1387 0.1849  
ppb

14.3.0-rc.0 (Dev)  
c24



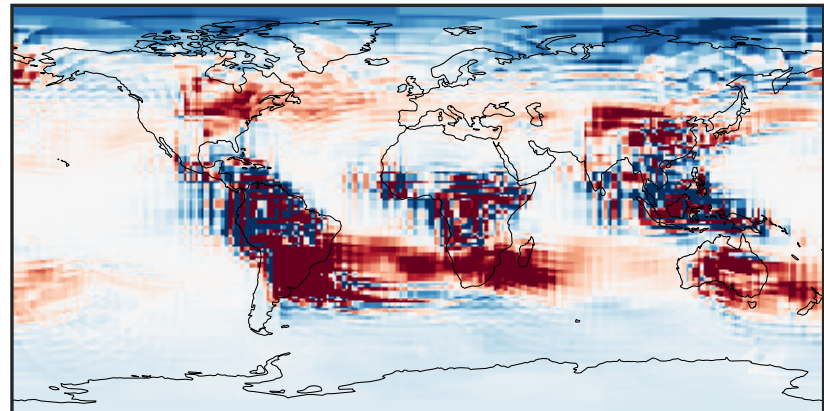
0.0001 0.0463 0.0925 0.1387 0.1849  
ppb

Difference (1x1.25)  
Dev - Ref, Dynamic Range



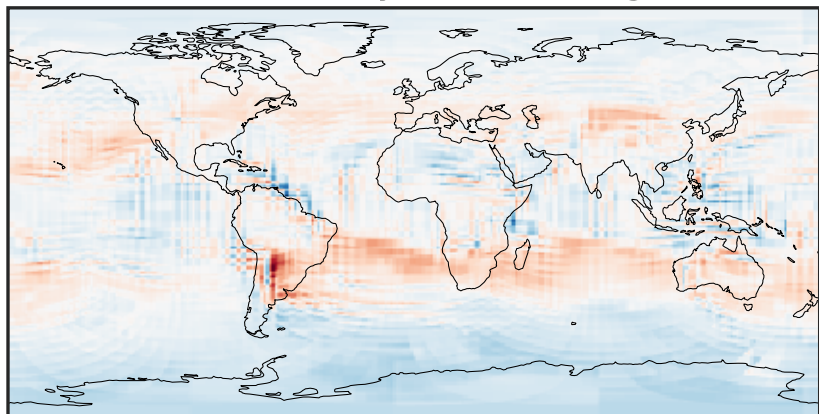
-0.1950 -0.0975 0.0000 0.0975 0.1950  
ppb

Difference (1x1.25)  
Dev - Ref, Restricted Range [5%,95%]



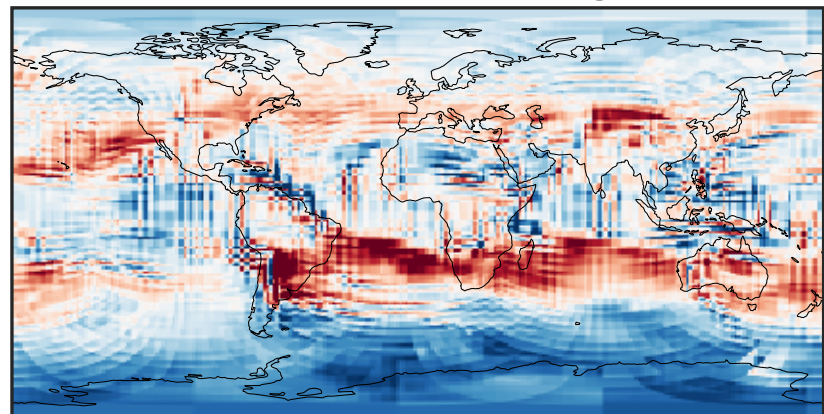
-0.0015 0.0000 0.0015  
ppb

Ratio (1x1.25)  
Dev/Ref, Dynamic Range



0.114 0.557 1.000 4.899 8.799  
unitless

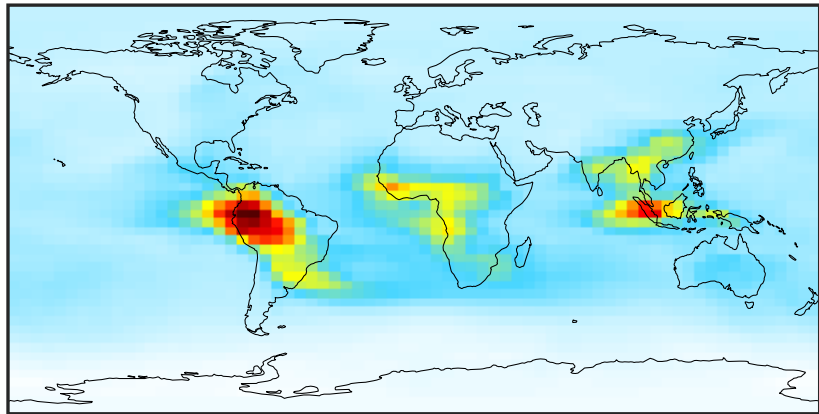
Ratio (1x1.25)  
Dev/Ref, Fixed Range



0.50 0.75 1.00 1.50 2.00  
unitless

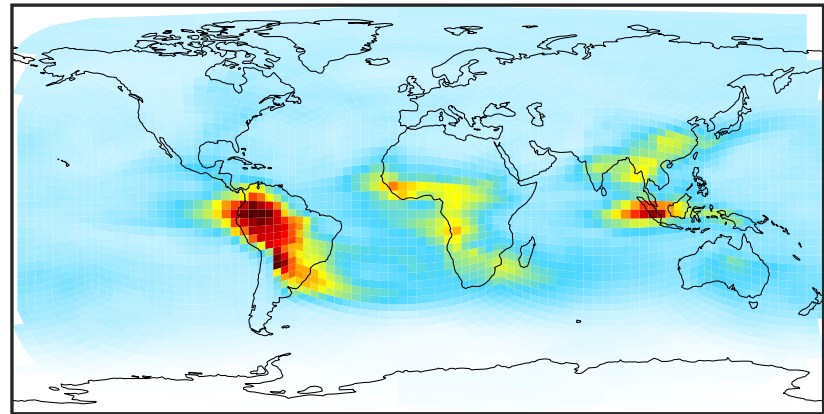
# SpeciesConcVV\_MOH (Oct2019)

14.3.0-rc.0 (Ref)  
4.0x5.0



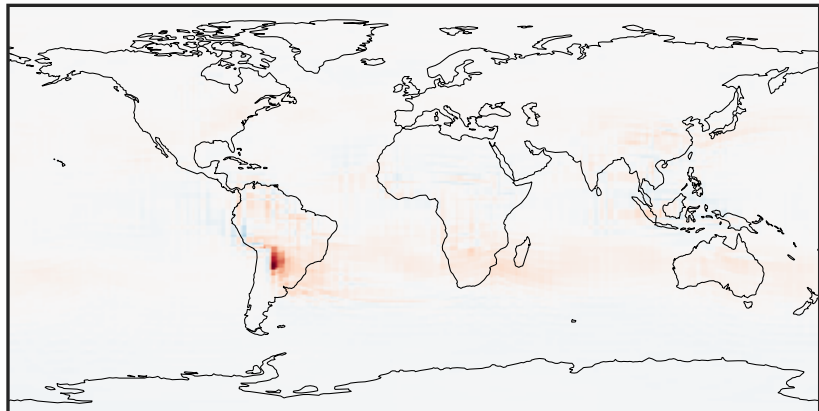
0.111 0.502 0.894 1.286 1.678  
ppb

14.3.0-rc.0 (Dev)  
c24



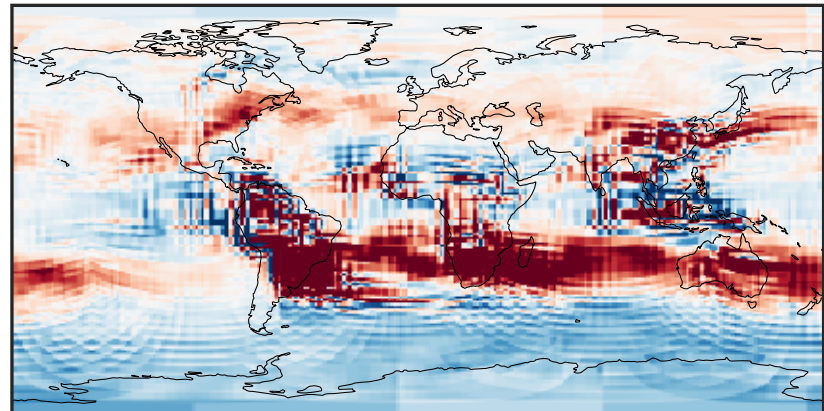
0.111 0.502 0.894 1.286 1.678  
ppb

Difference (1x1.25)  
Dev - Ref, Dynamic Range



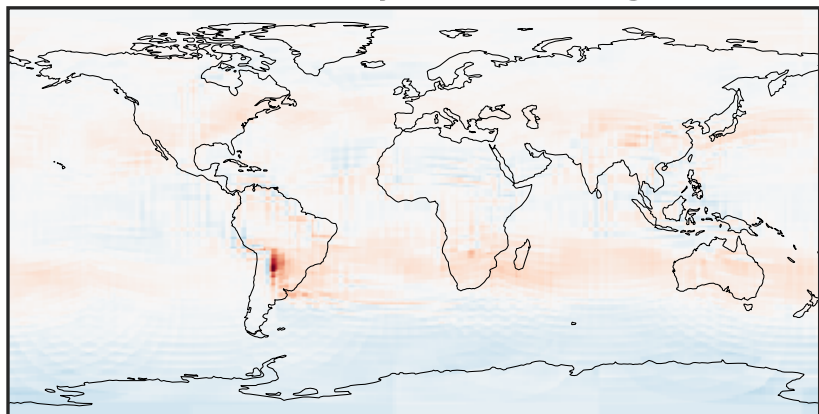
-1.274 -0.637 0.000 0.637 1.274  
ppb

Difference (1x1.25)  
Dev - Ref, Restricted Range [5%,95%]



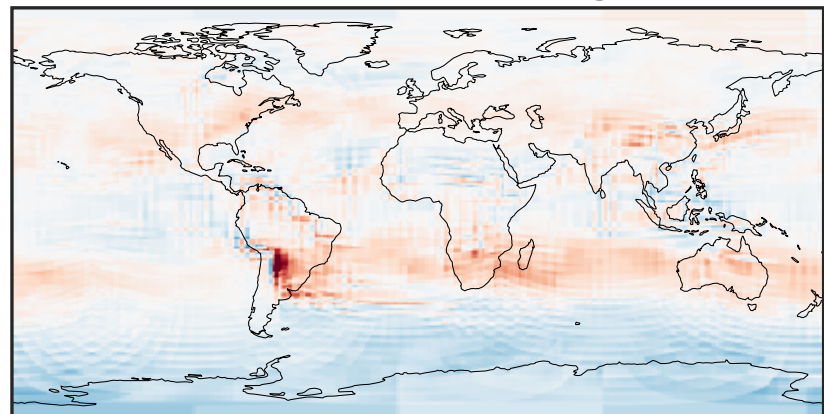
-0.062 -0.031 0.000 0.031 0.062  
ppb

Ratio (1x1.25)  
Dev/Ref, Dynamic Range



0.274 0.637 1.000 2.326 3.652  
unitless

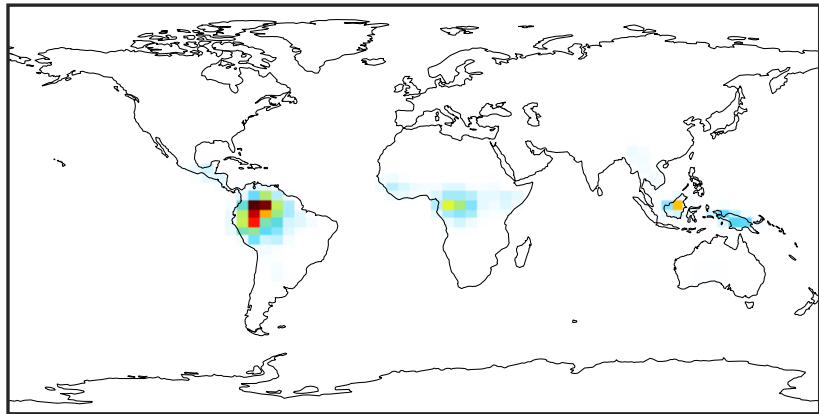
Ratio (1x1.25)  
Dev/Ref, Fixed Range



0.50 0.75 1.00 1.50 2.00  
unitless

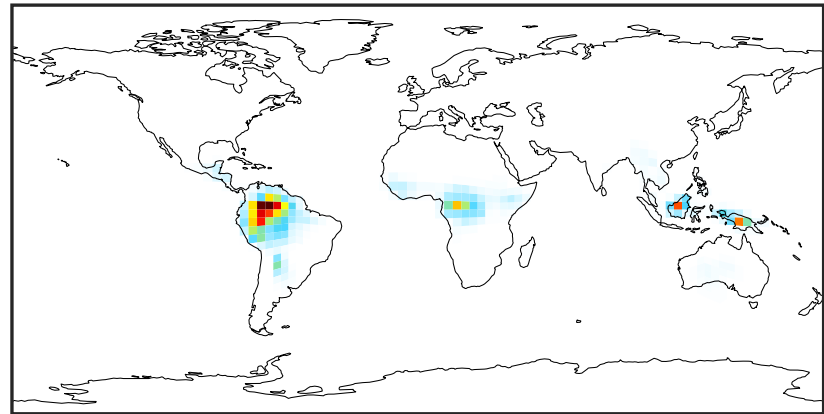
# SpeciesConcVV\_ISOP (Oct2019)

14.3.0-rc.0 (Ref)  
4.0x5.0



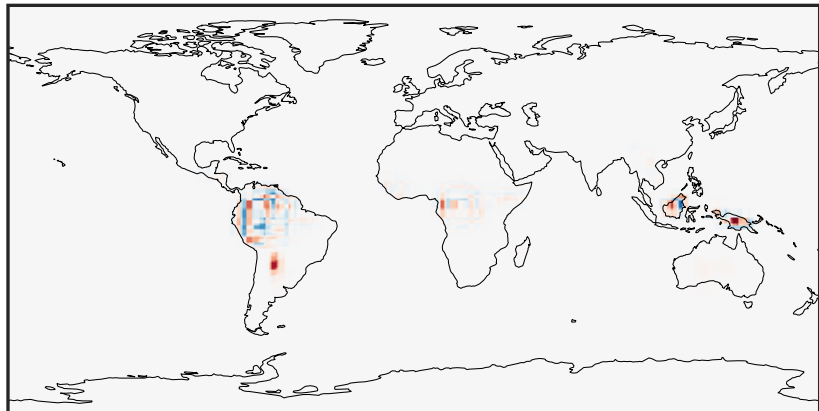
0.0000 0.0321 0.0642 0.0963 0.1284  
ppb

14.3.0-rc.0 (Dev)  
c24



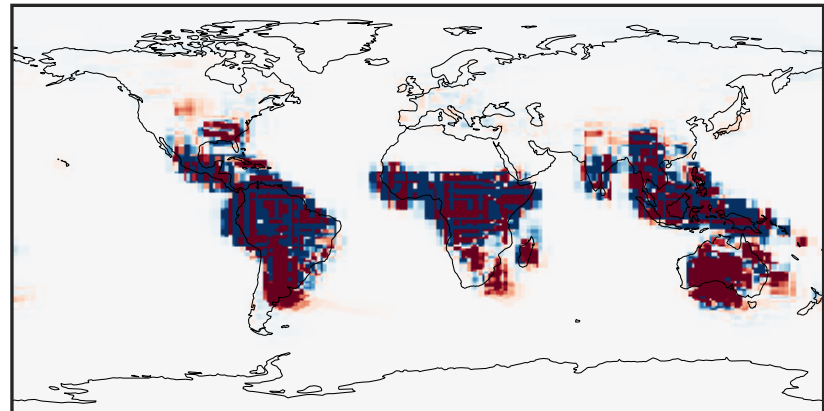
0.0000 0.0321 0.0642 0.0963 0.1284  
ppb

Difference (1x1.25)  
Dev - Ref, Dynamic Range



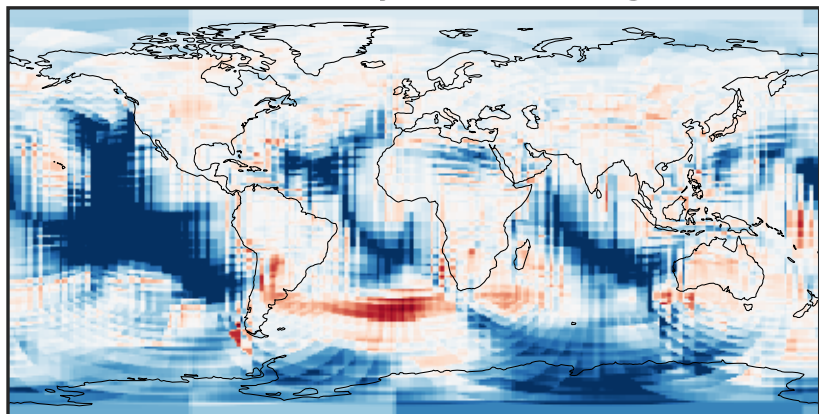
-0.0509 -0.0254 0.0000 0.0254 0.0509  
ppb

Difference (1x1.25)  
Dev - Ref, Restricted Range [5%,95%]



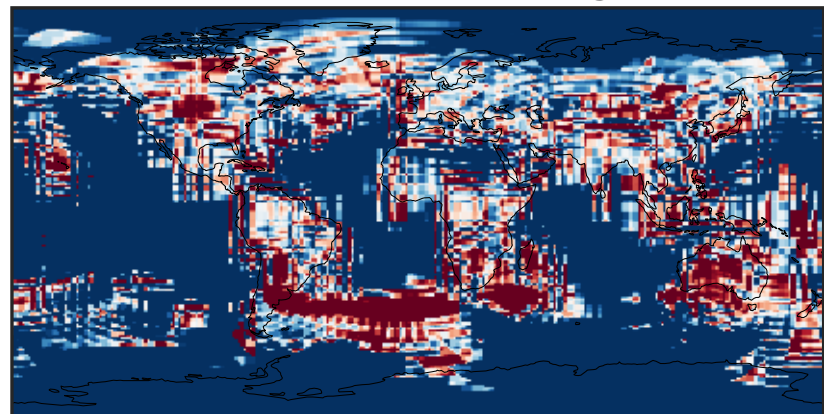
-2.5 0.0 2.5  
ppb  $1e-5$

Ratio (1x1.25)  
Dev/Ref, Dynamic Range



1e-02 1e-01 1 10 100  
unitless

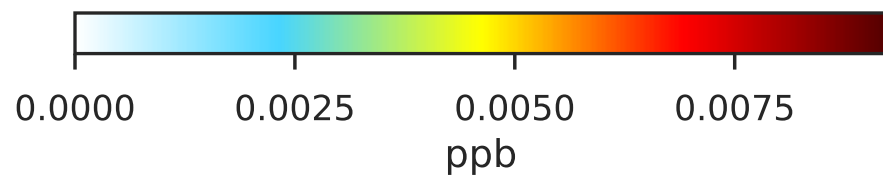
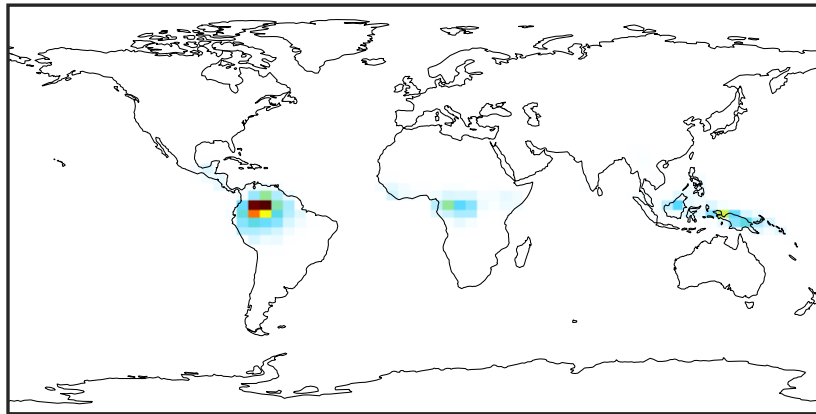
Ratio (1x1.25)  
Dev/Ref, Fixed Range



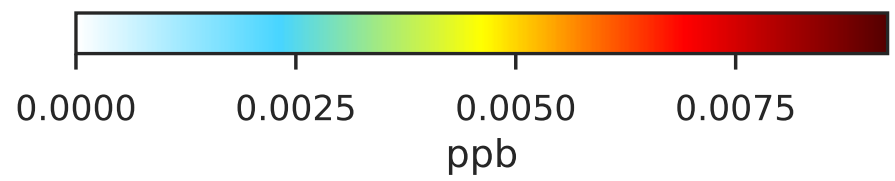
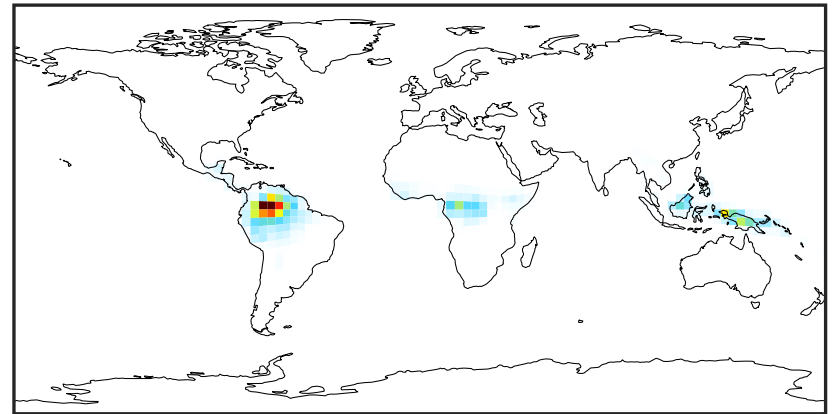
0.50 0.75 1.00 1.50 2.00  
unitless

# SpeciesConcVV\_MTPA (Oct2019)

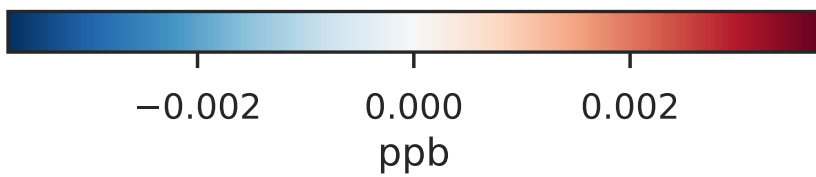
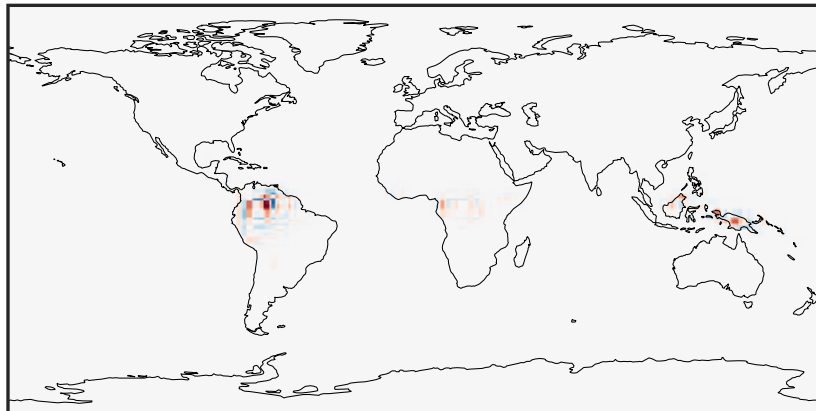
14.3.0-rc.0 (Ref)  
4.0x5.0



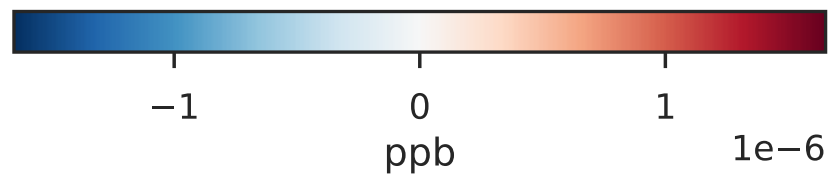
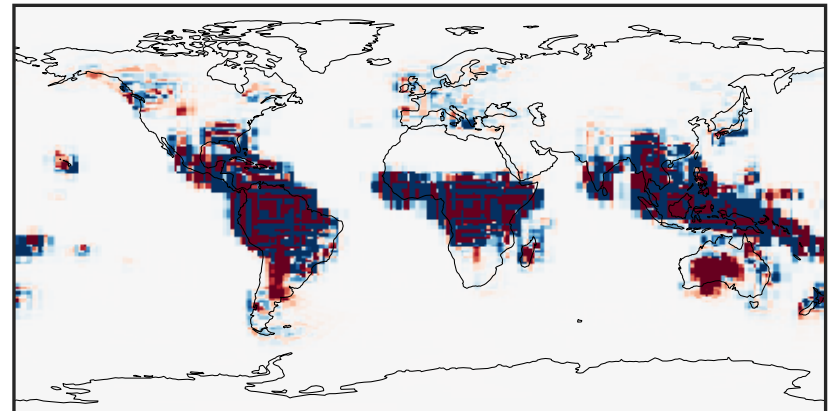
14.3.0-rc.0 (Dev)  
c24



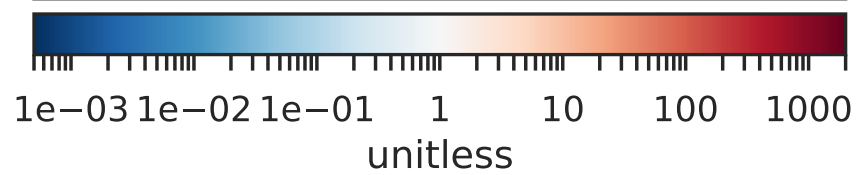
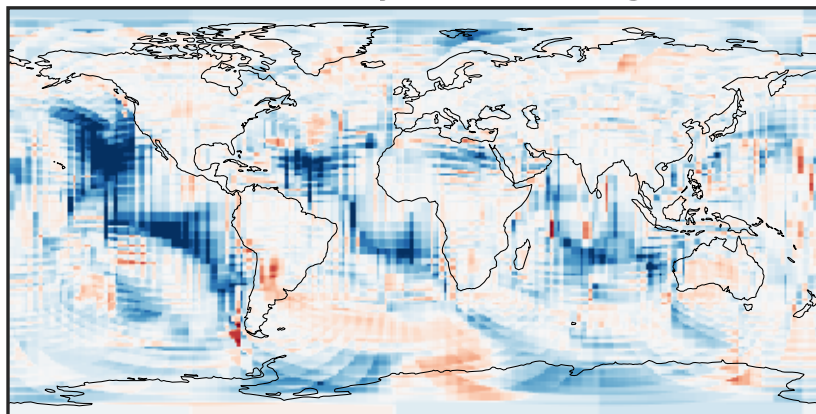
Difference (1x1.25)  
Dev - Ref, Dynamic Range



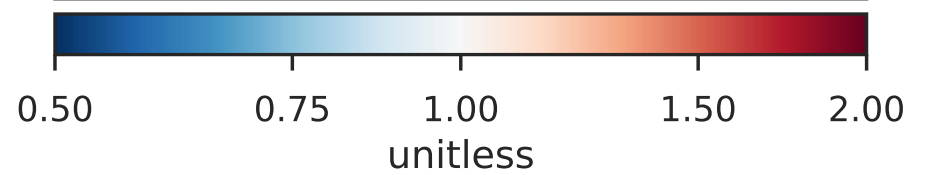
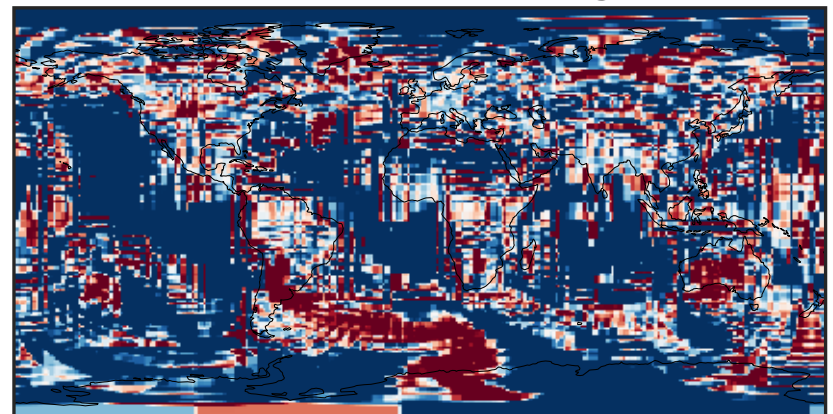
Difference (1x1.25)  
Dev - Ref, Restricted Range [5%,95%]



Ratio (1x1.25)  
Dev/Ref, Dynamic Range

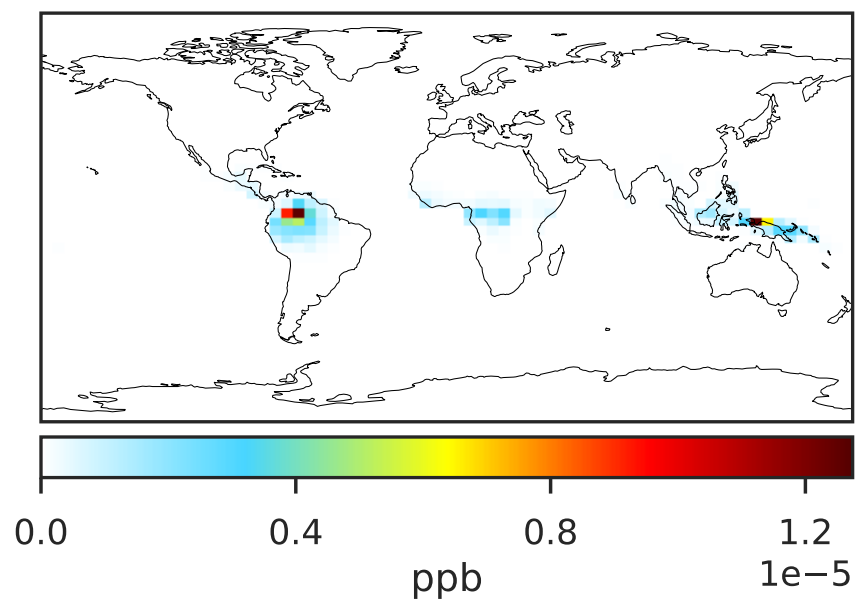


Ratio (1x1.25)  
Dev/Ref, Fixed Range

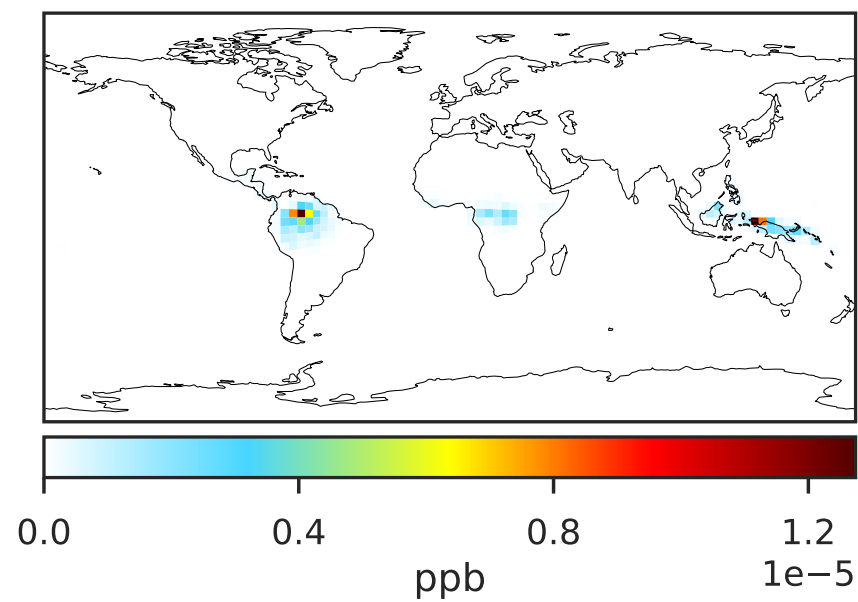


# SpeciesConcVV\_MTPO (Oct2019)

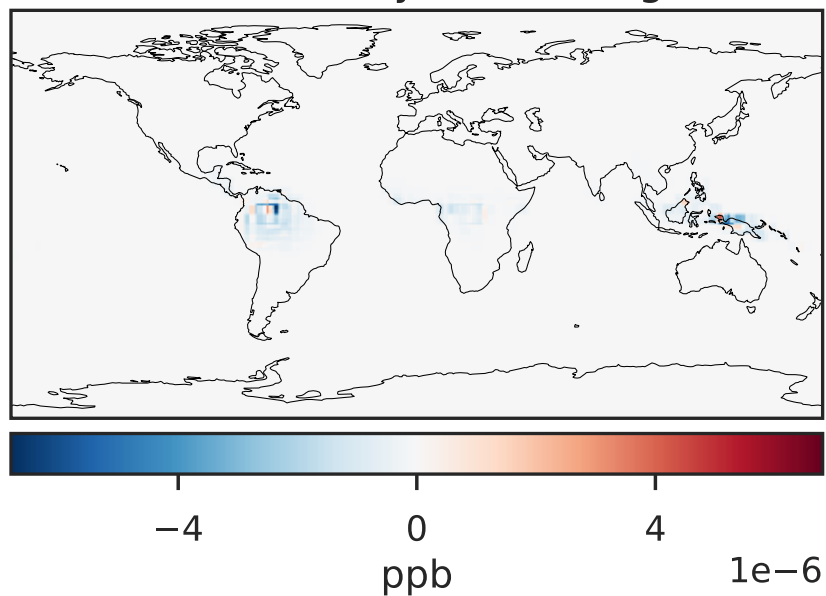
14.3.0-rc.0 (Ref)  
4.0x5.0



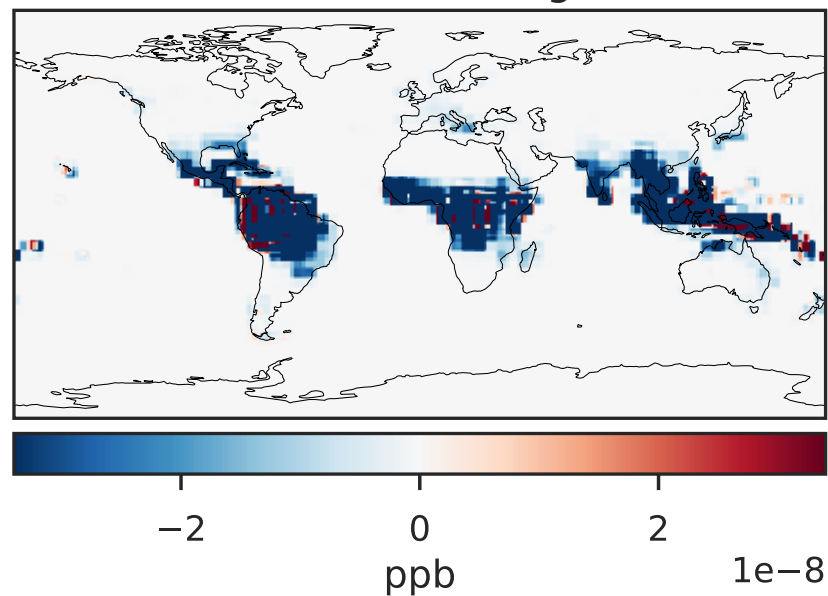
14.3.0-rc.0 (Dev)  
c24



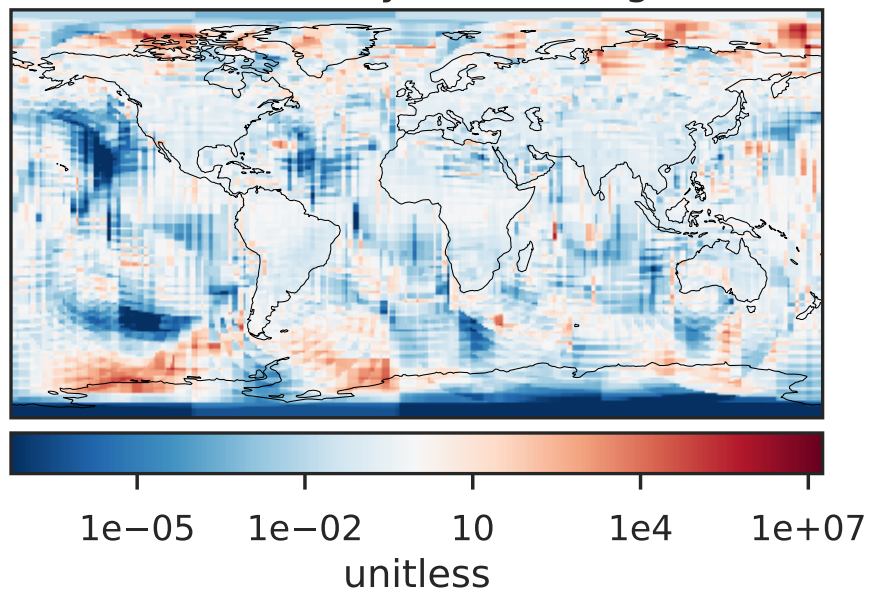
Difference (1x1.25)  
Dev - Ref, Dynamic Range



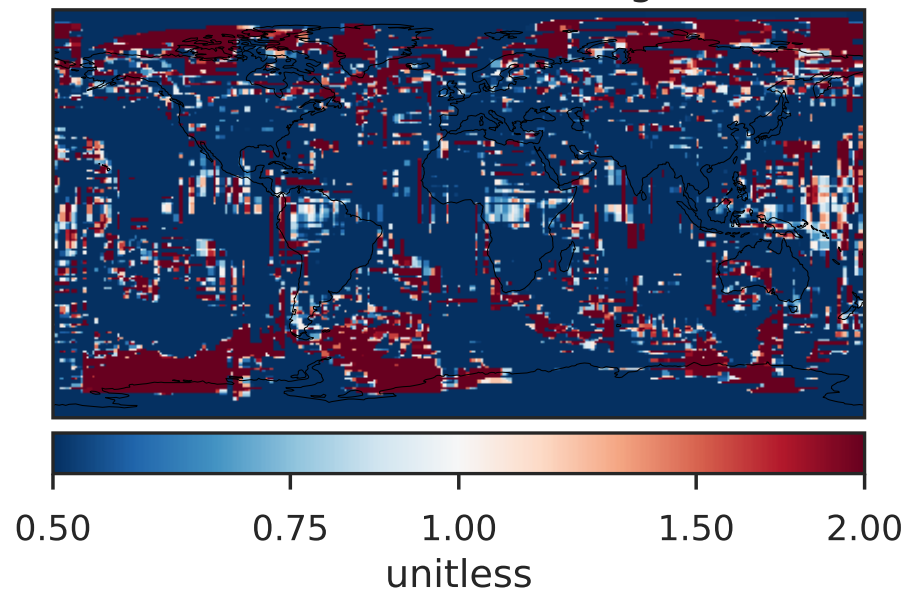
Difference (1x1.25)  
Dev - Ref, Restricted Range [5%,95%]



Ratio (1x1.25)  
Dev/Ref, Dynamic Range

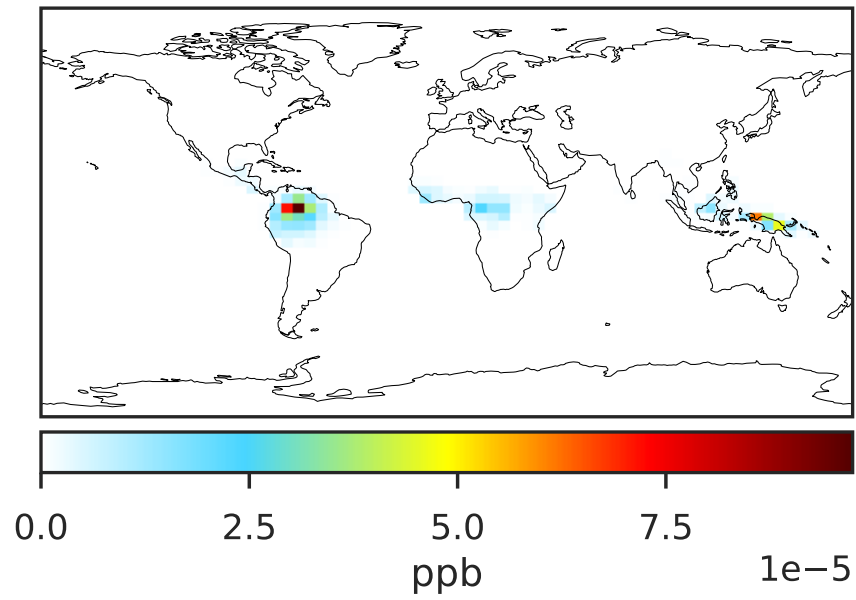


Ratio (1x1.25)  
Dev/Ref, Fixed Range

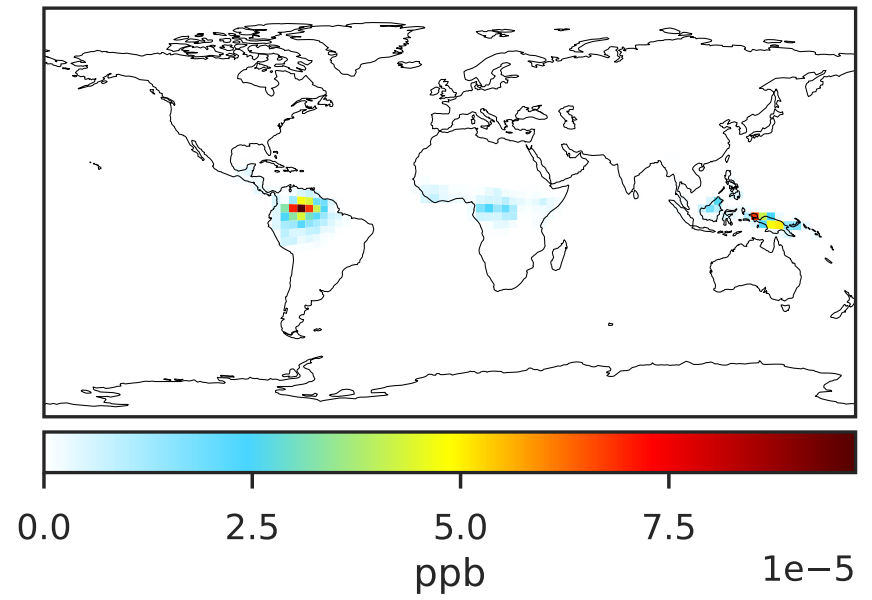


# SpeciesConcVV\_LIMO (Oct2019)

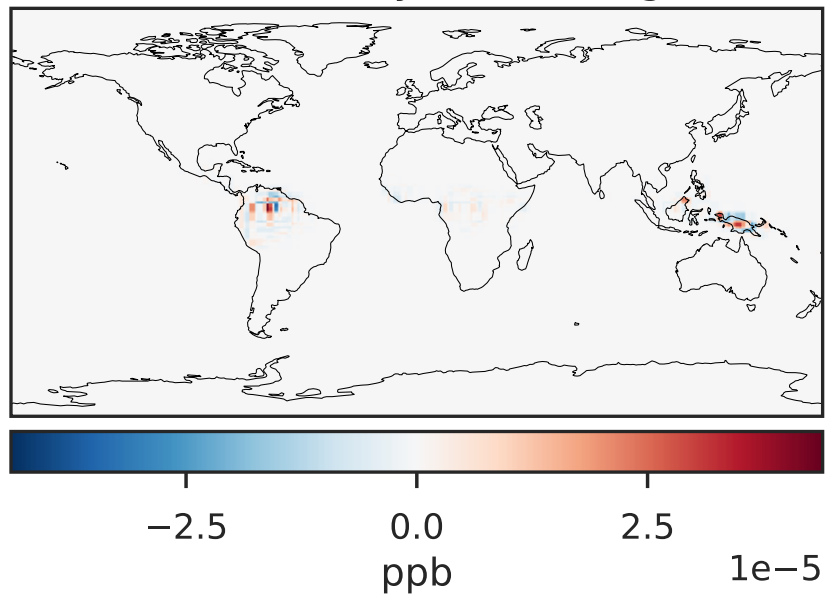
14.3.0-rc.0 (Ref)  
4.0x5.0



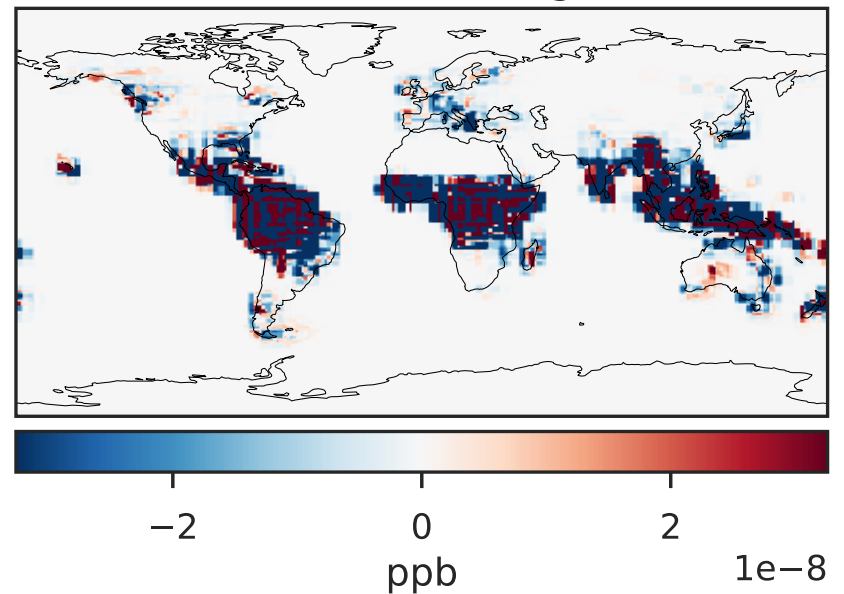
14.3.0-rc.0 (Dev)  
c24



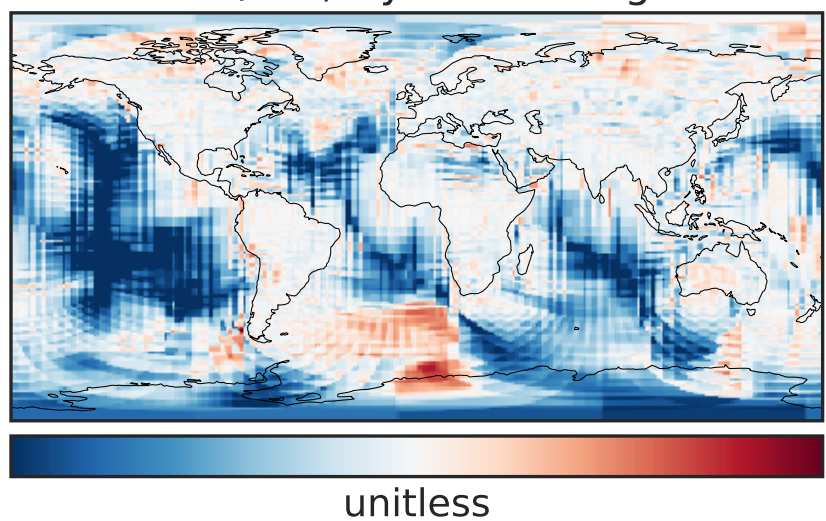
Difference (1x1.25)  
Dev - Ref, Dynamic Range



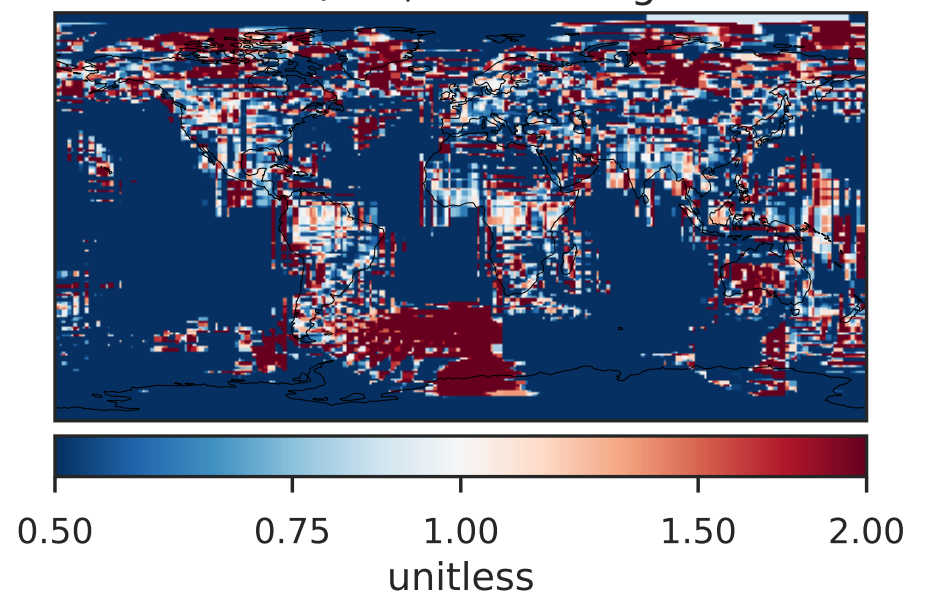
Difference (1x1.25)  
Dev - Ref, Restricted Range [5%,95%]



Ratio (1x1.25)  
Dev/Ref, Dynamic Range

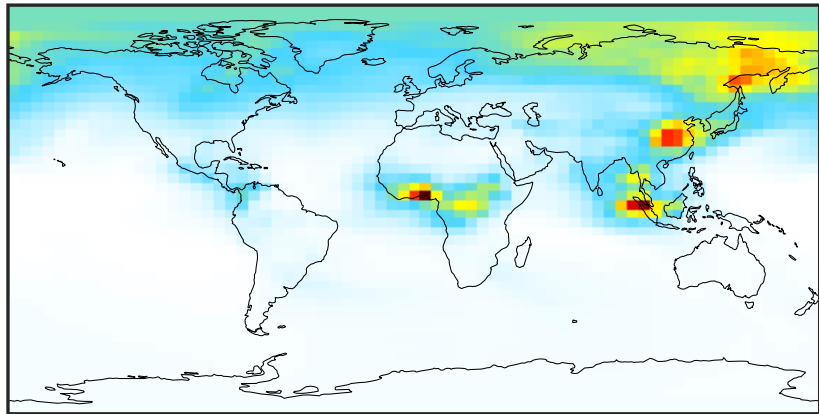


Ratio (1x1.25)  
Dev/Ref, Fixed Range



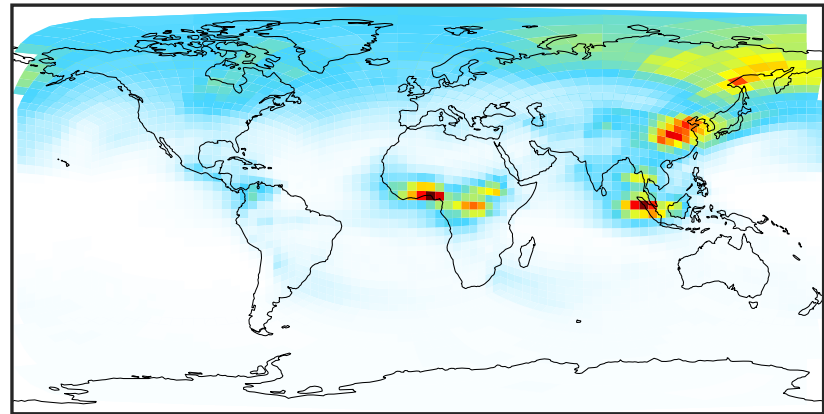
# SpeciesConcVV\_ALK4 (Oct2019)

14.3.0-rc.0 (Ref)  
4.0x5.0



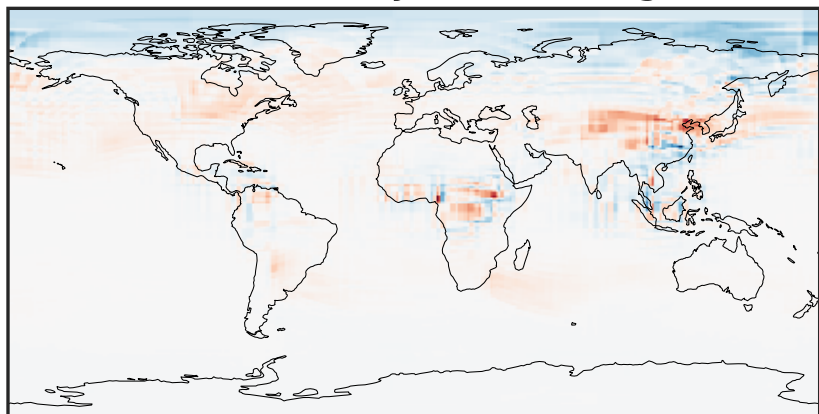
0.0003 0.1095 0.2188 0.3280 0.4373  
ppb

14.3.0-rc.0 (Dev)  
c24



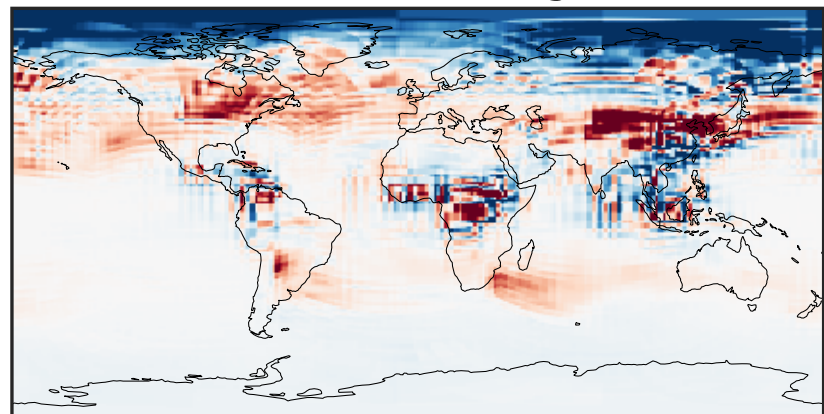
0.0003 0.1095 0.2188 0.3280 0.4373  
ppb

Difference (1x1.25)  
Dev - Ref, Dynamic Range



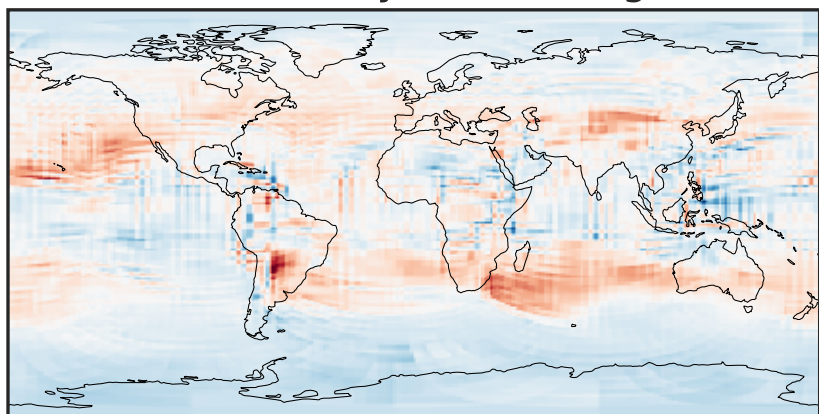
-0.138 -0.069 0.000 0.069 0.138  
ppb

Difference (1x1.25)  
Dev - Ref, Restricted Range [5%,95%]



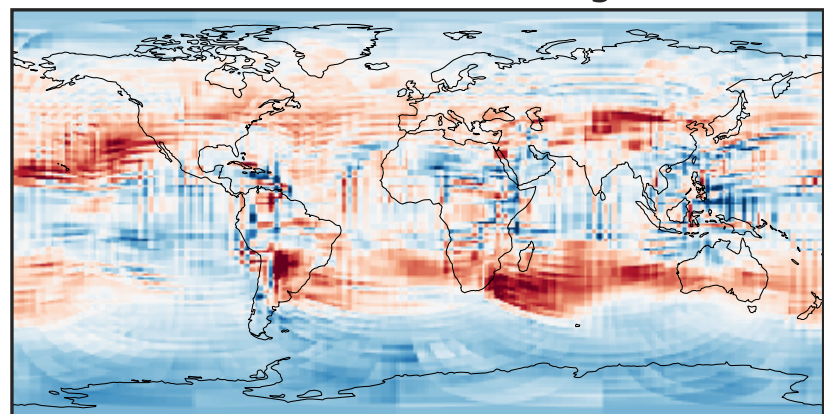
-0.015 0.000 0.015  
ppb

Ratio (1x1.25)  
Dev/Ref, Dynamic Range



0.253 0.627 1.000 2.474 3.947  
unitless

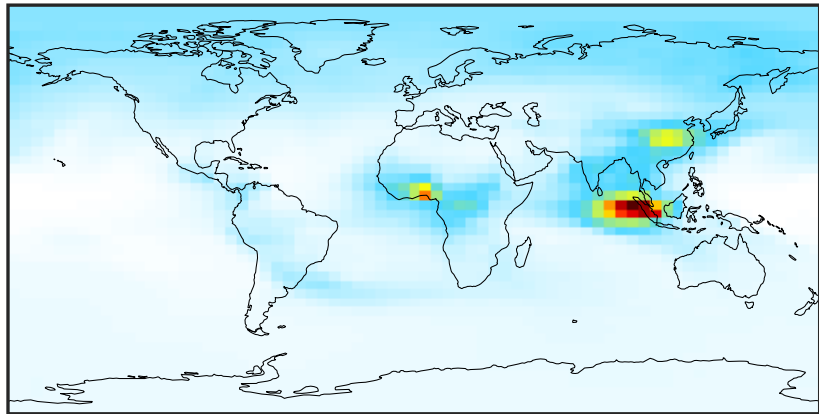
Ratio (1x1.25)  
Dev/Ref, Fixed Range



0.50 0.75 1.00 1.50 2.00  
unitless

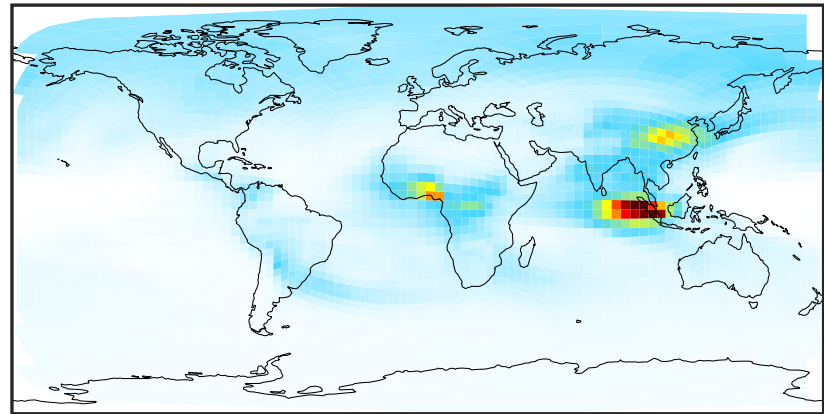
# SpeciesConcVV\_BENZ (Oct2019)

14.3.0-rc.0 (Ref)  
4.0x5.0



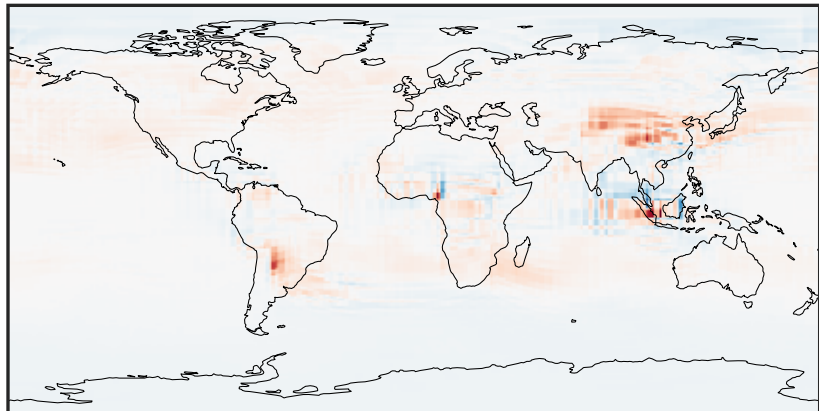
0.0004 0.0301 0.0598 0.0894 0.1191  
ppb

14.3.0-rc.0 (Dev)  
c24



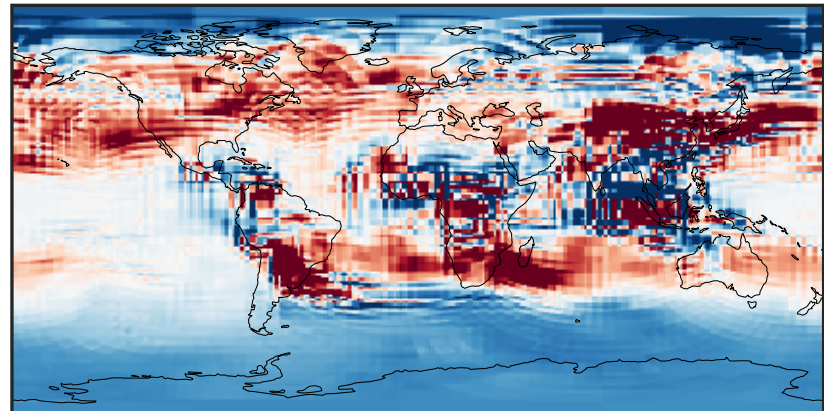
0.0004 0.0301 0.0598 0.0894 0.1191  
ppb

Difference (1x1.25)  
Dev - Ref, Dynamic Range



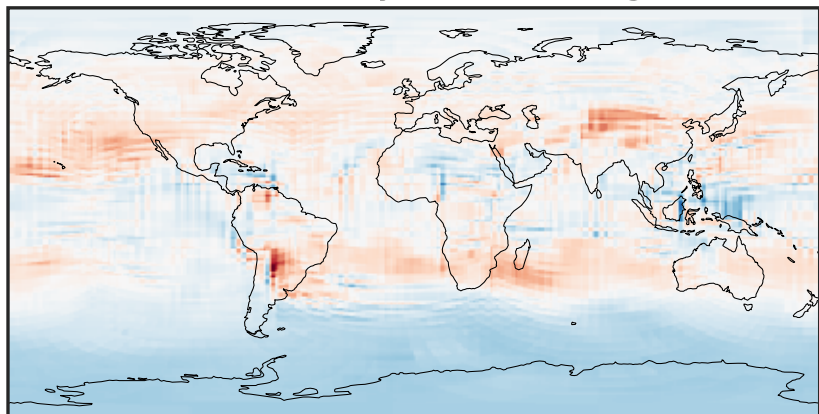
-0.015 0.000 0.015  
ppb

Difference (1x1.25)  
Dev - Ref, Restricted Range [5%,95%]



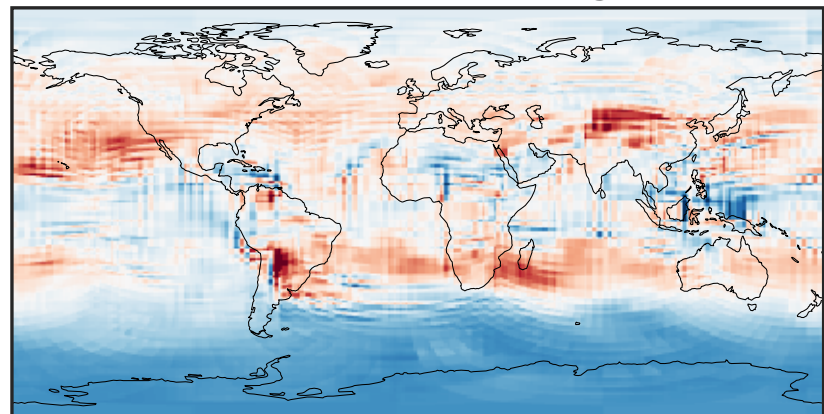
-0.0015 0.0000 0.0015  
ppb

Ratio (1x1.25)  
Dev/Ref, Dynamic Range



0.284 0.642 1.000 2.258 3.515  
unitless

Ratio (1x1.25)  
Dev/Ref, Fixed Range

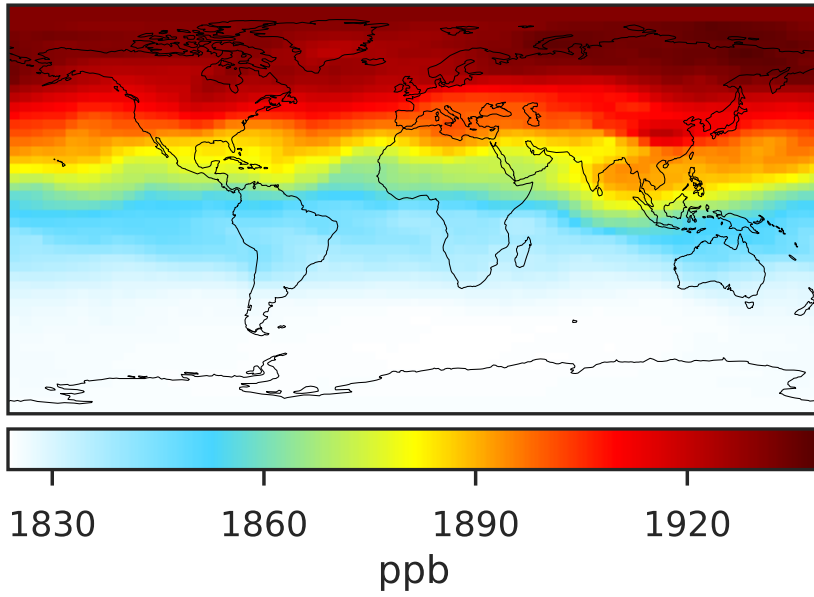


0.50 0.75 1.00 1.50 2.00  
unitless

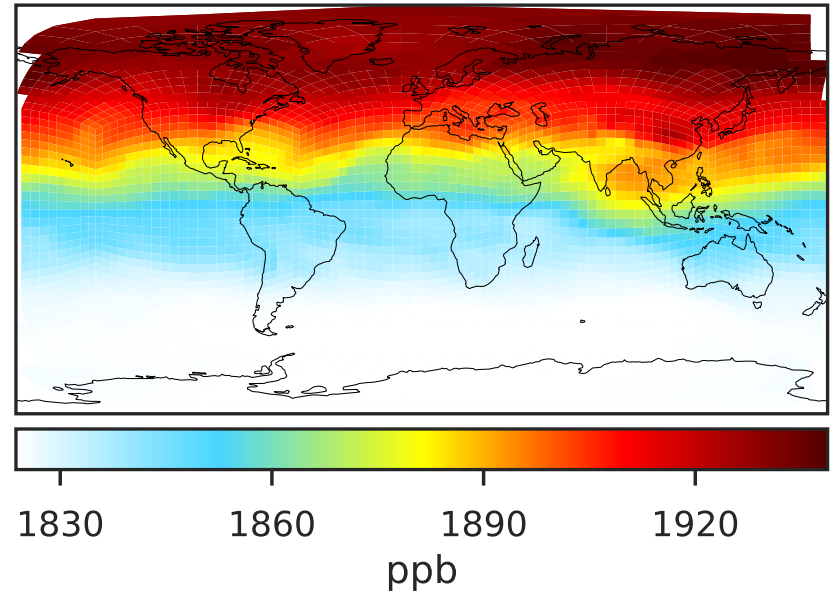


# SpeciesConcVV\_CH4 (Oct2019)

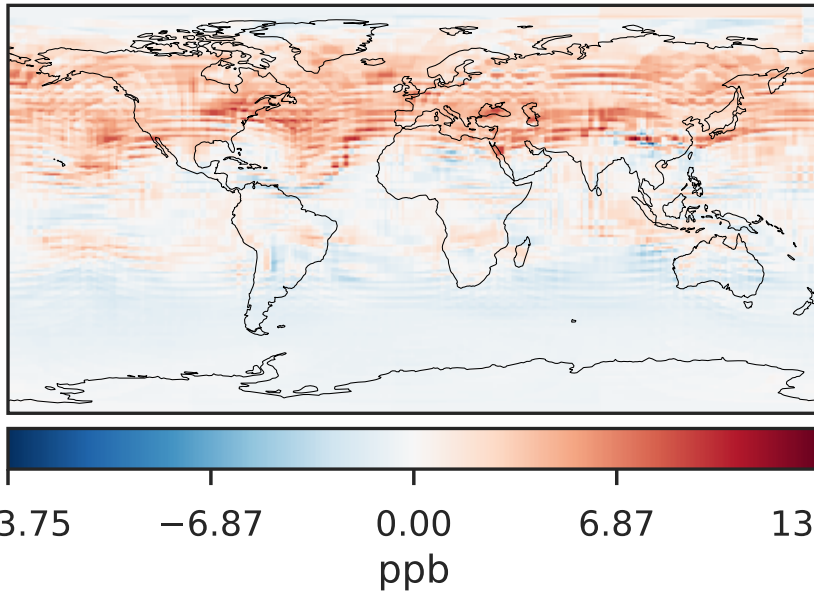
14.3.0-rc.0 (Ref)  
4.0x5.0



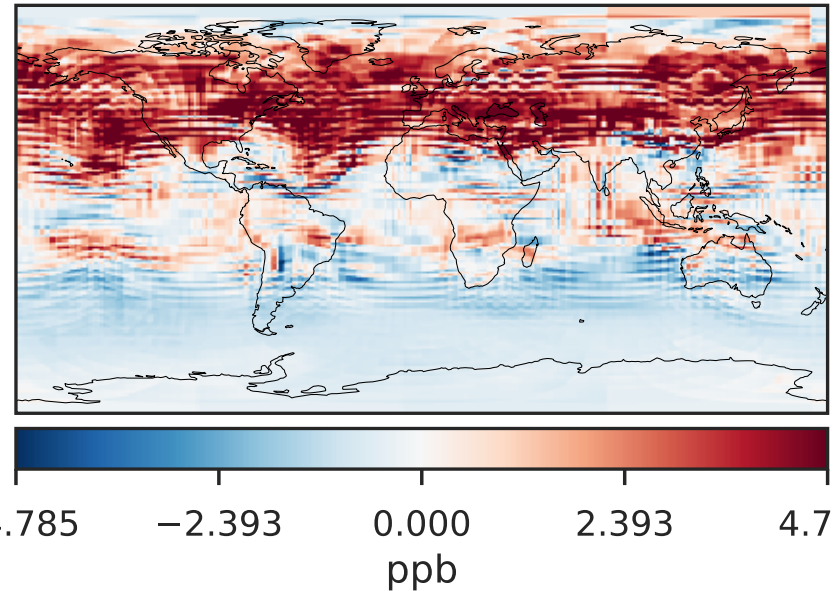
14.3.0-rc.0 (Dev)  
c24



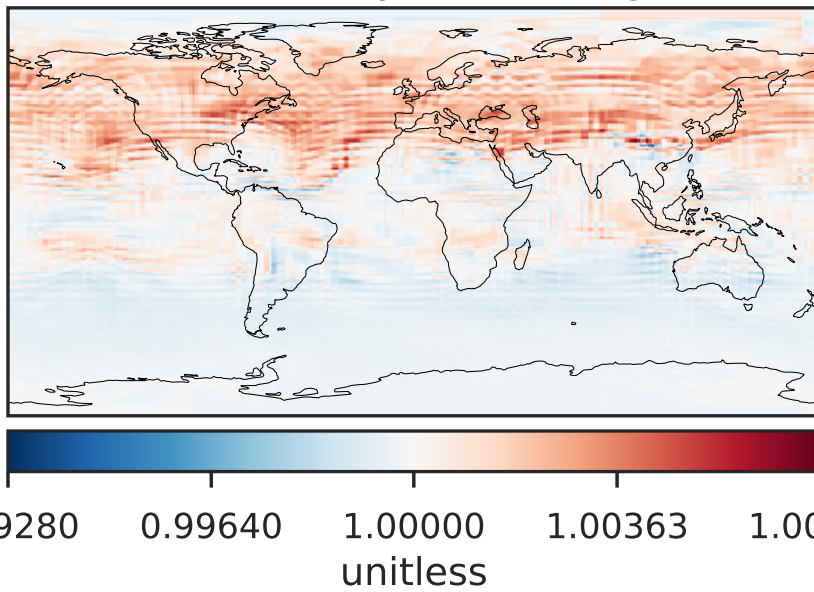
Difference (1x1.25)  
Dev - Ref, Dynamic Range



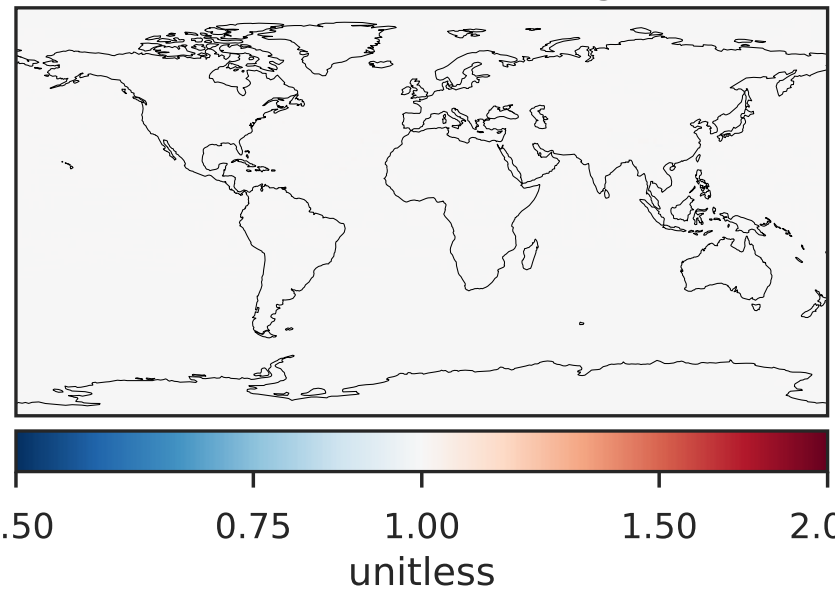
Difference (1x1.25)  
Dev - Ref, Restricted Range [5%,95%]



Ratio (1x1.25)  
Dev/Ref, Dynamic Range

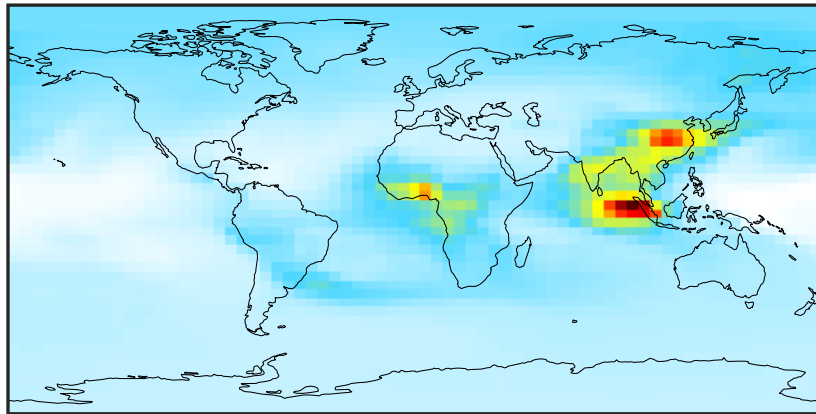


Ratio (1x1.25)  
Dev/Ref, Fixed Range



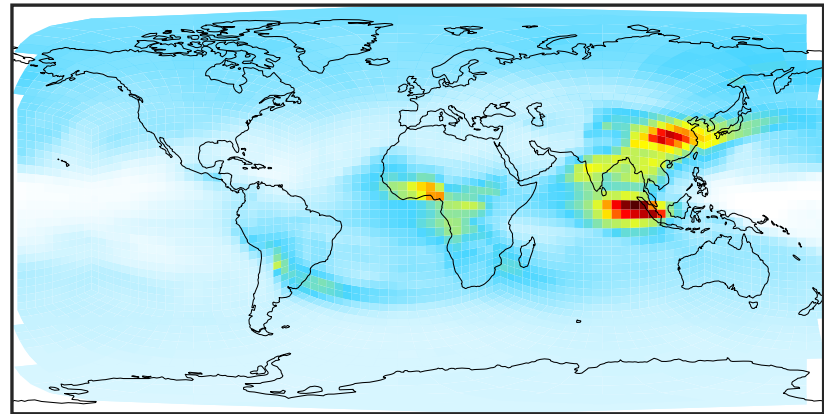
# SpeciesConcVV\_C2H2 (Oct2019)

14.3.0-rc.0 (Ref)  
4.0x5.0



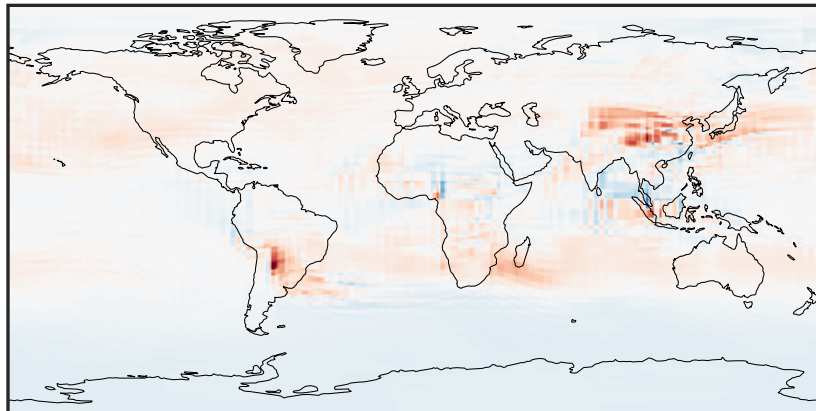
0.0049 0.0660 0.1271 0.1881 0.2492  
ppb

14.3.0-rc.0 (Dev)  
c24



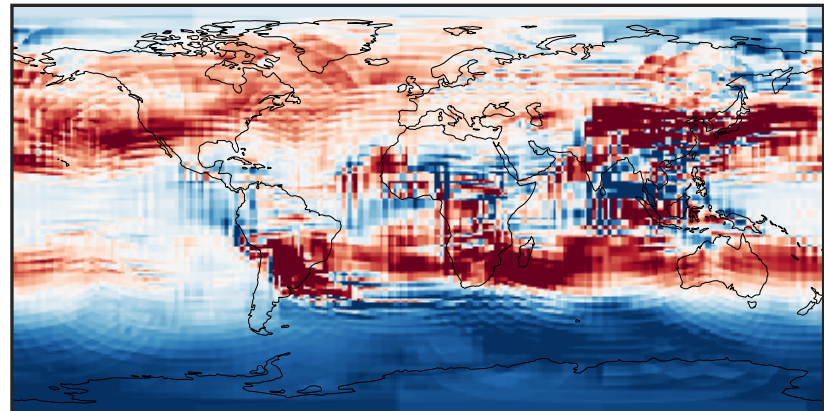
0.0049 0.0660 0.1271 0.1881 0.2492  
ppb

Difference (1x1.25)  
Dev - Ref, Dynamic Range



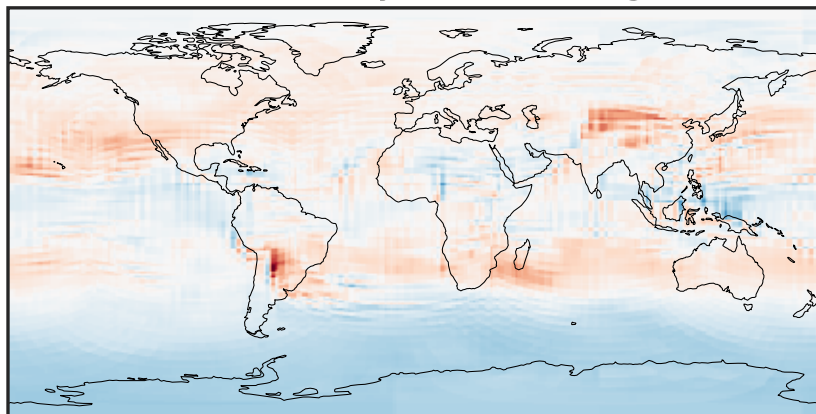
-0.0671 -0.0336 0.0000 0.0336 0.0671  
ppb

Difference (1x1.25)  
Dev - Ref, Restricted Range [5%,95%]



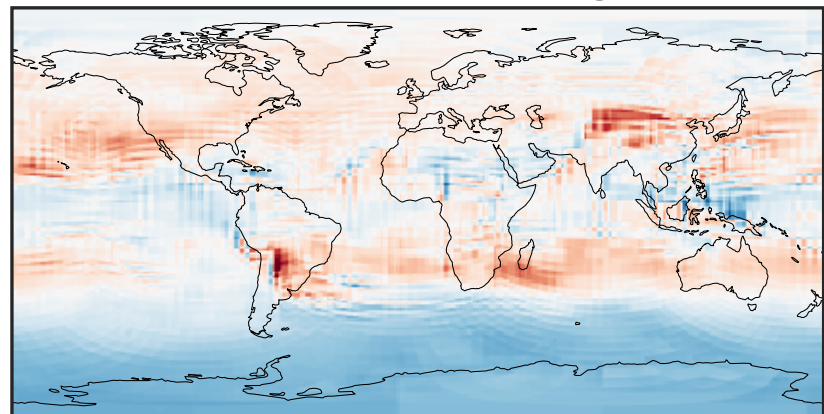
-0.004 0.000 0.004  
ppb

Ratio (1x1.25)  
Dev/Ref, Dynamic Range



0.377 0.688 1.000 1.827 2.655  
unitless

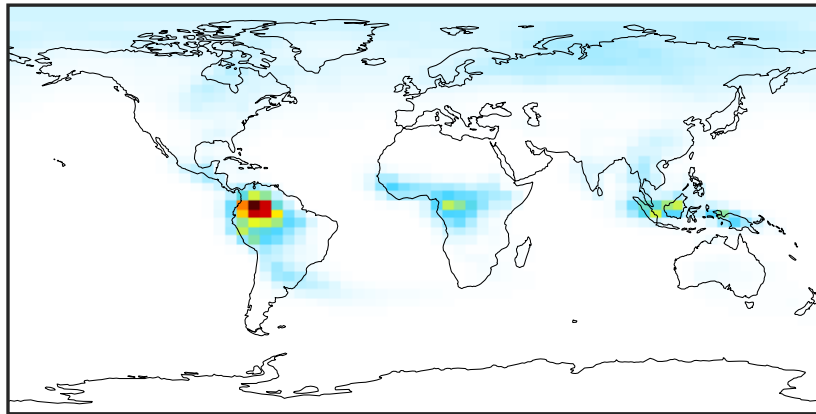
Ratio (1x1.25)  
Dev/Ref, Fixed Range



0.50 0.75 1.00 1.50 2.00  
unitless

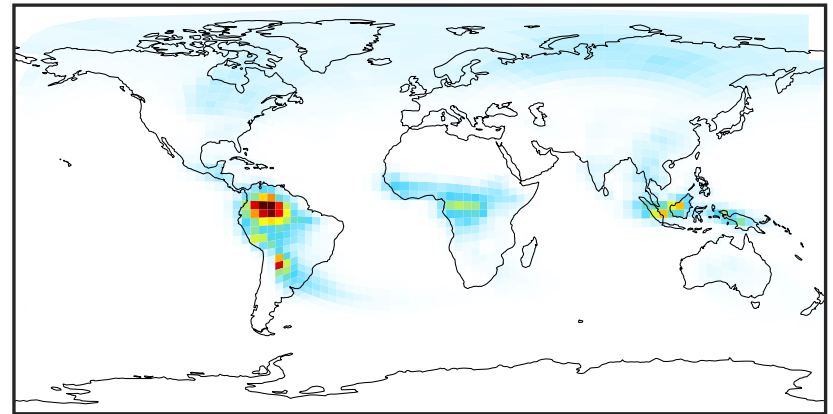
# SpeciesConcVV\_C2H4 (Oct2019)

14.3.0-rc.0 (Ref)  
4.0x5.0



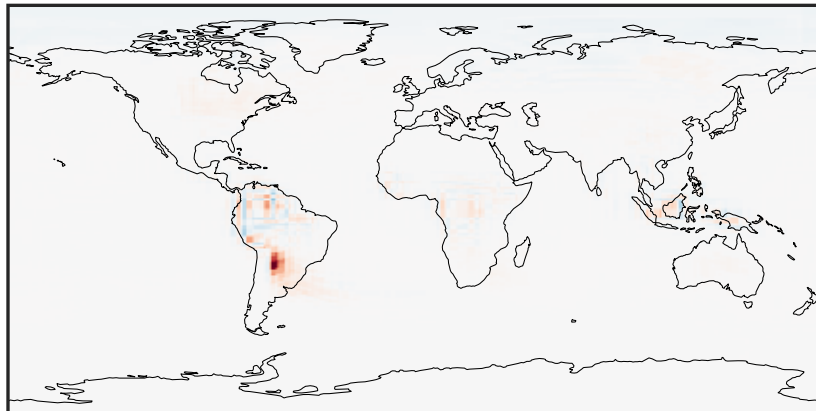
0.0000 0.0642 0.1284 0.1926 0.2568  
ppb

14.3.0-rc.0 (Dev)  
c24



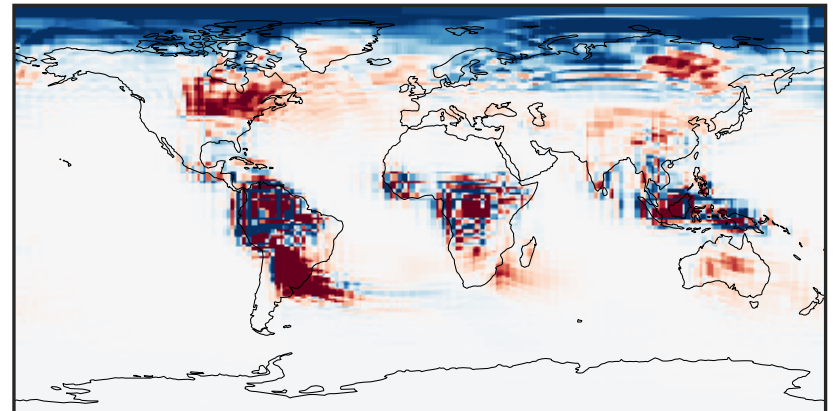
0.0000 0.0642 0.1284 0.1926 0.2568  
ppb

Difference (1x1.25)  
Dev - Ref, Dynamic Range



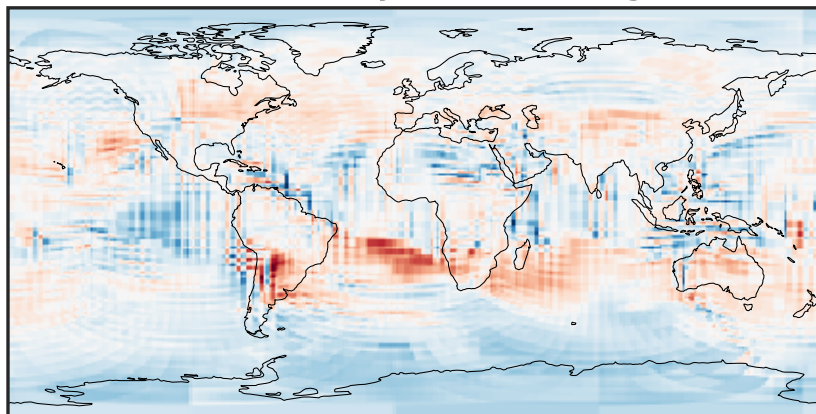
-0.1869 -0.0934 0.0000 0.0934 0.1869  
ppb

Difference (1x1.25)  
Dev - Ref, Restricted Range [5%,95%]



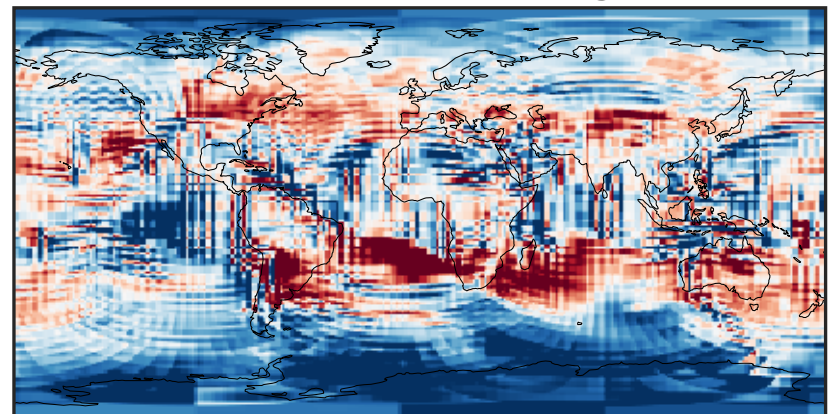
-0.004 0.000 0.004  
ppb

Ratio (1x1.25)  
Dev/Ref, Dynamic Range



1e-01 1 10  
unitless

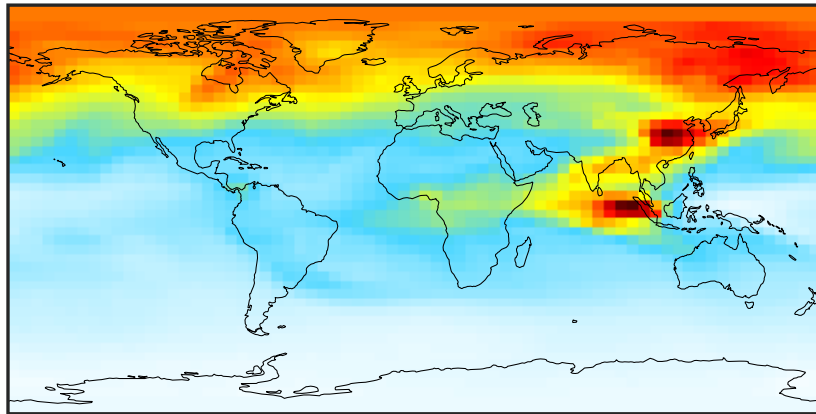
Ratio (1x1.25)  
Dev/Ref, Fixed Range



0.50 0.75 1.00 1.50 2.00  
unitless

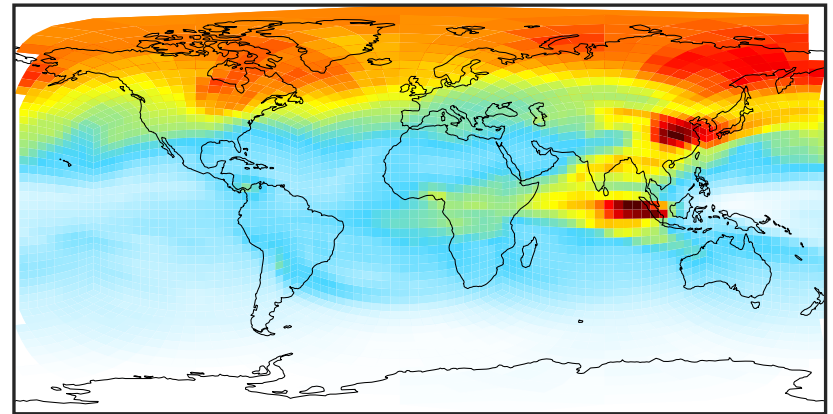
# SpeciesConcVV\_C2H6 (Oct2019)

14.3.0-rc.0 (Ref)  
4.0x5.0



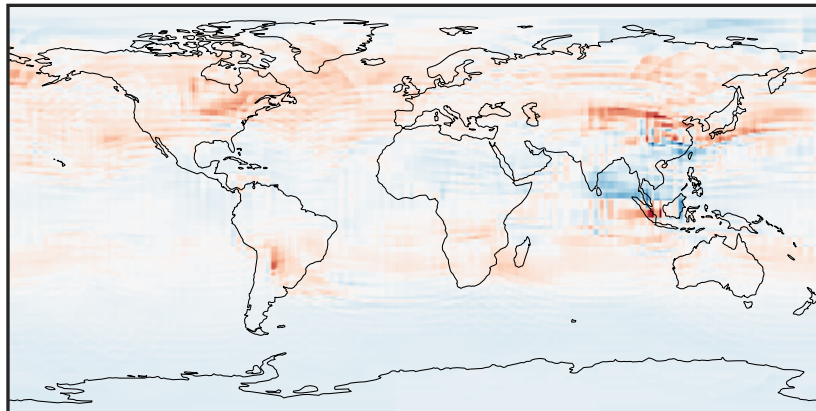
0.1049 0.3440 0.5830 0.8221 1.0611  
ppb

14.3.0-rc.0 (Dev)  
c24



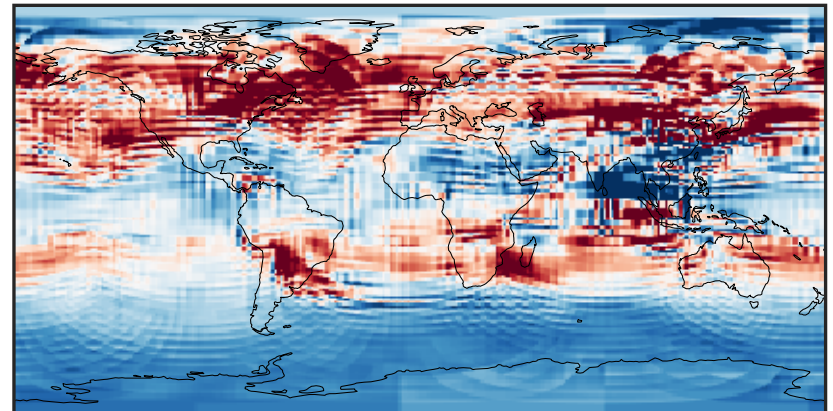
0.1049 0.3440 0.5830 0.8221 1.0611  
ppb

Difference (1x1.25)  
Dev - Ref, Dynamic Range



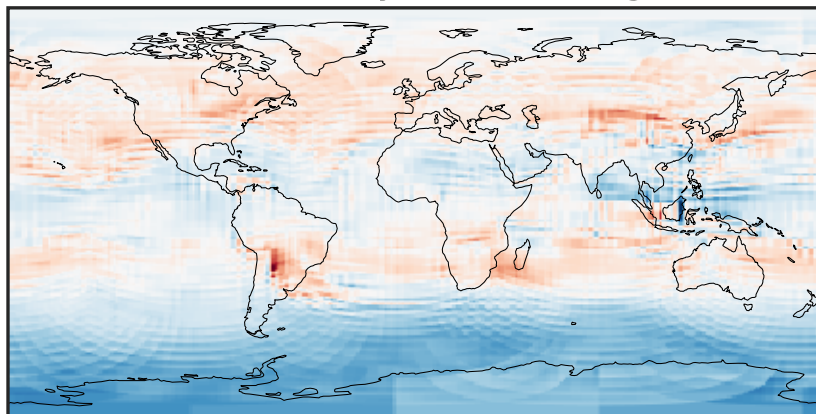
-0.2211 -0.1105 0.0000 0.1105 0.2211  
ppb

Difference (1x1.25)  
Dev - Ref, Restricted Range [5%,95%]



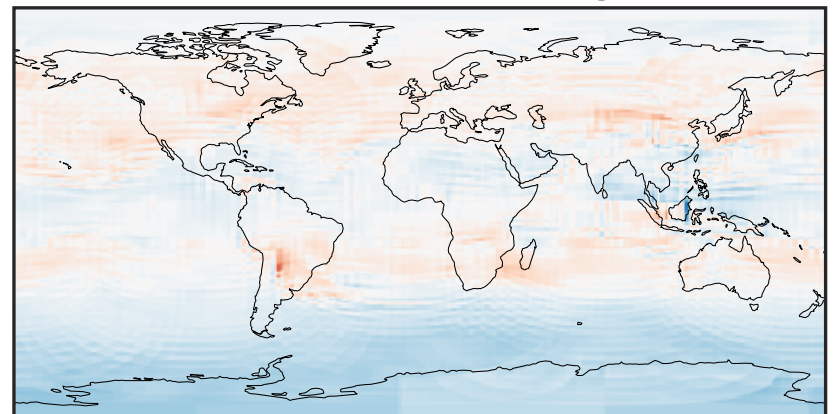
-0.02 0.00 0.02  
ppb

Ratio (1x1.25)  
Dev/Ref, Dynamic Range



0.6667 0.8334 1.0000 1.2500 1.4999  
unitless

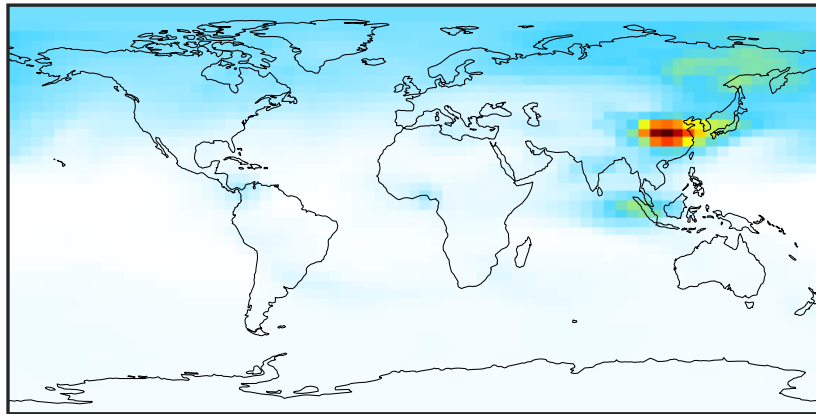
Ratio (1x1.25)  
Dev/Ref, Fixed Range



0.50 0.75 1.00 1.50 2.00  
unitless

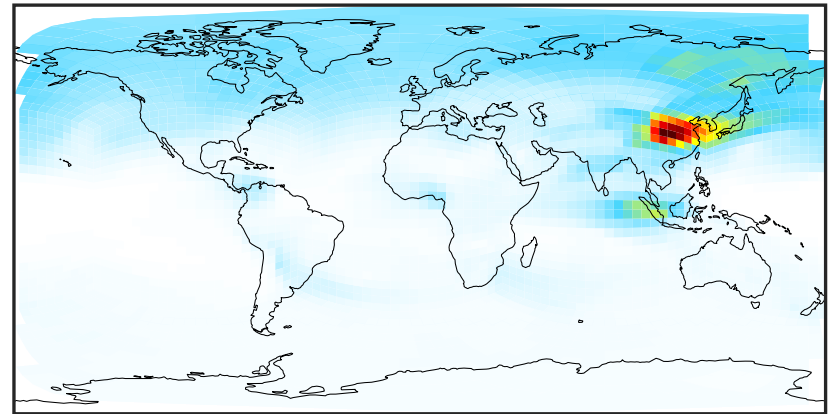
# SpeciesConcVV\_C3H8 (Oct2019)

14.3.0-rc.0 (Ref)  
4.0x5.0



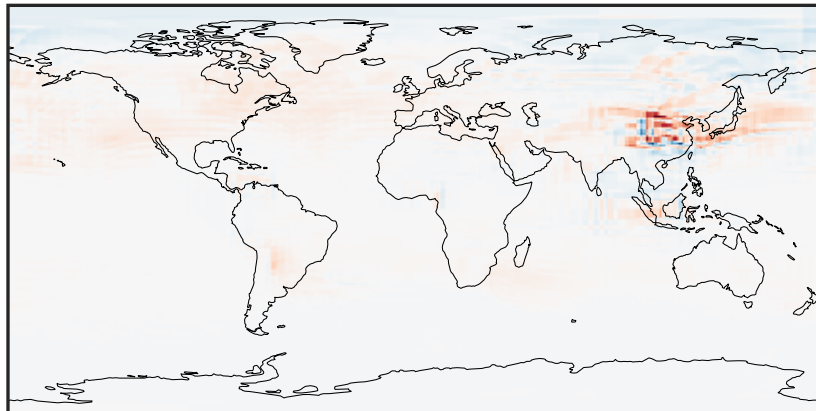
0.0006 0.1480 0.2953 0.4427 0.5901  
ppb

14.3.0-rc.0 (Dev)  
c24



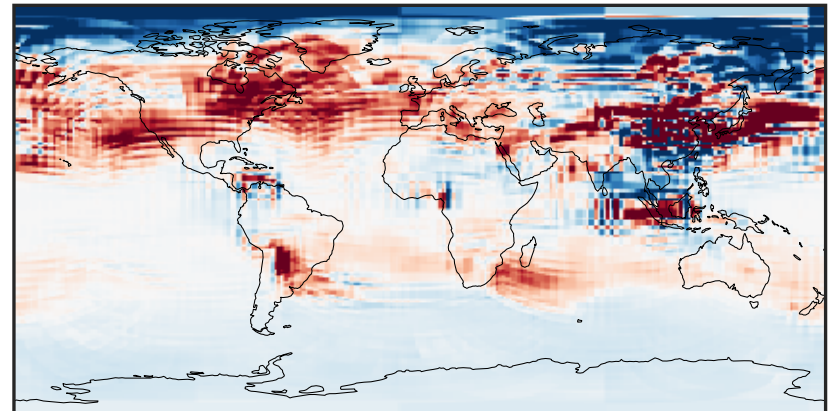
0.0006 0.1480 0.2953 0.4427 0.5901  
ppb

Difference (1x1.25)  
Dev - Ref, Dynamic Range



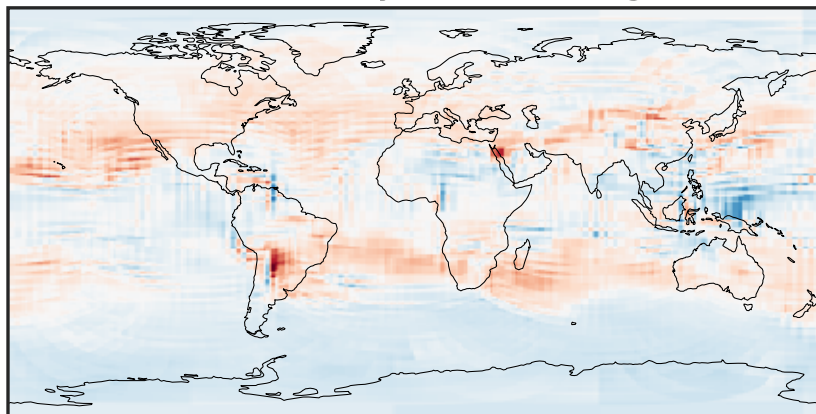
-0.184 -0.092 0.000 0.092 0.184  
ppb

Difference (1x1.25)  
Dev - Ref, Restricted Range [5%,95%]



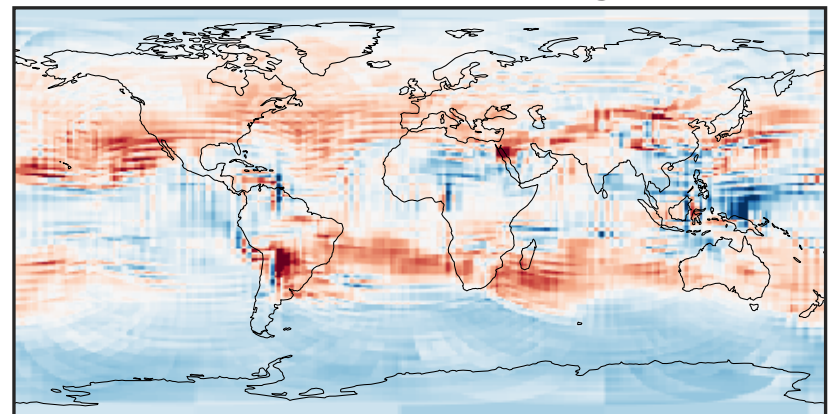
-0.008 0.000 0.008  
ppb

Ratio (1x1.25)  
Dev/Ref, Dynamic Range



0.273 0.637 1.000 2.330 3.660  
unitless

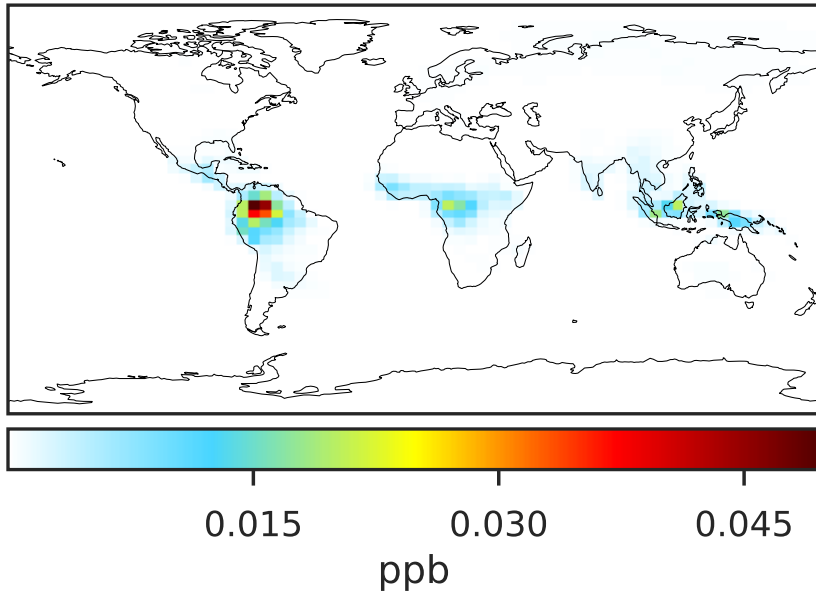
Ratio (1x1.25)  
Dev/Ref, Fixed Range



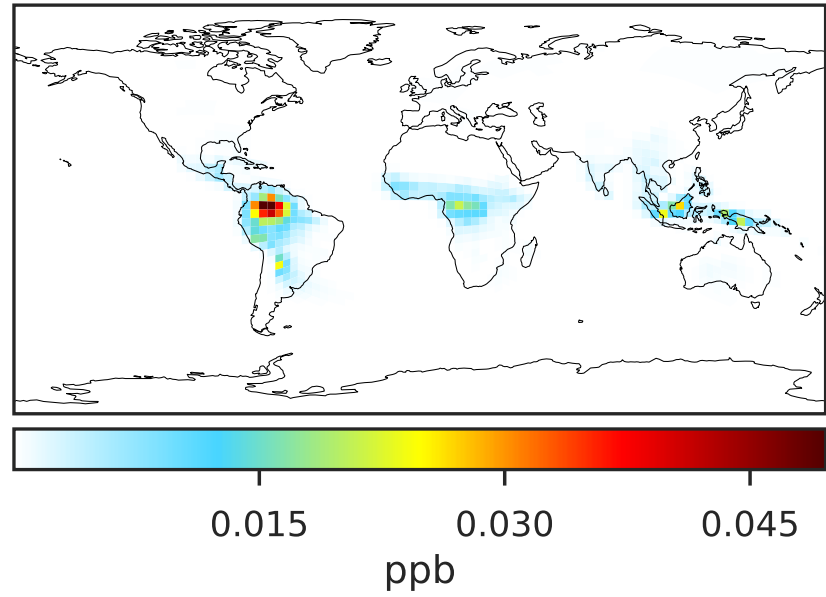
0.50 0.75 1.00 1.50 2.00  
unitless

# SpeciesConcVV\_PRPE (Oct2019)

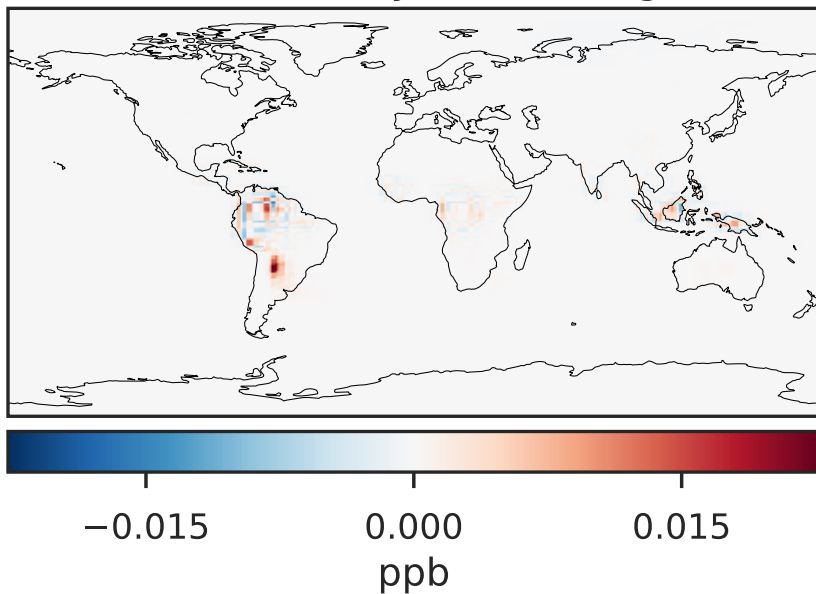
14.3.0-rc.0 (Ref)  
4.0x5.0



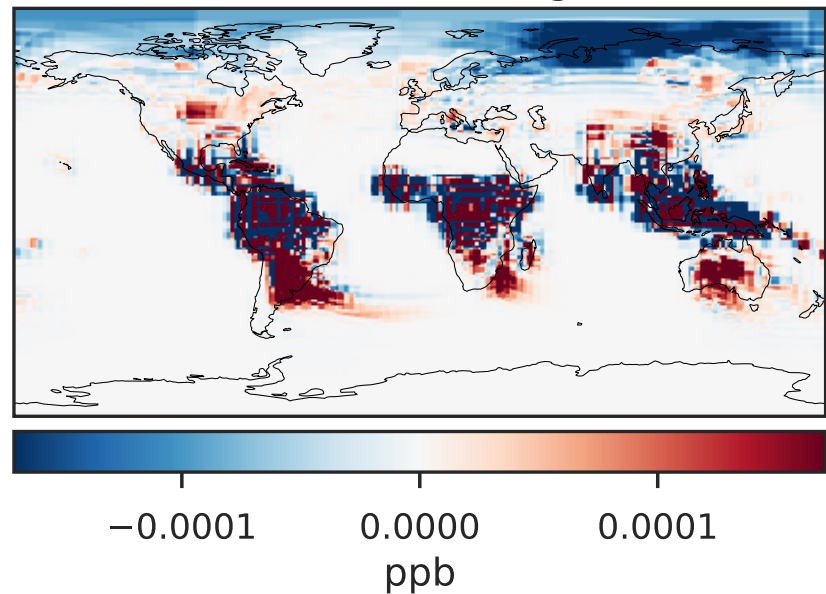
14.3.0-rc.0 (Dev)  
c24



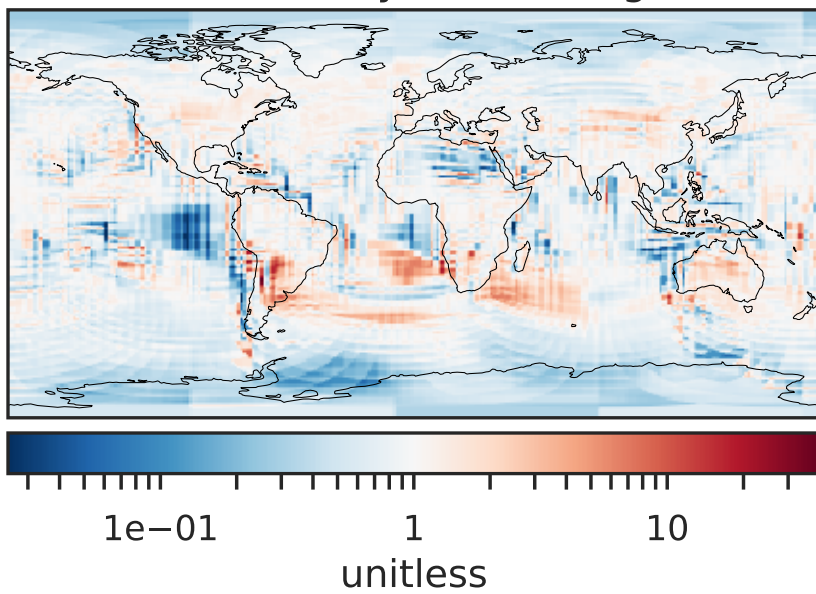
Difference (1x1.25)  
Dev - Ref, Dynamic Range



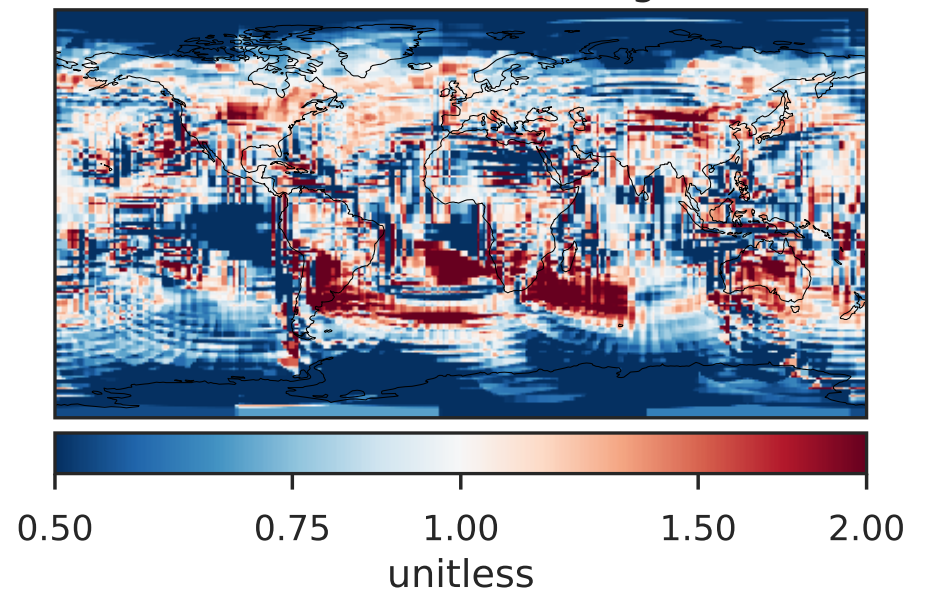
Difference (1x1.25)  
Dev - Ref, Restricted Range [5%,95%]



Ratio (1x1.25)  
Dev/Ref, Dynamic Range

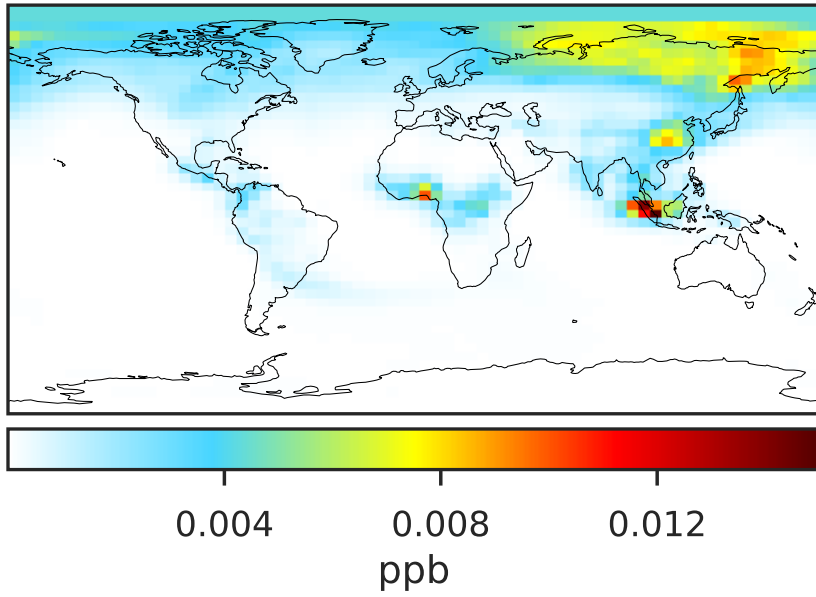


Ratio (1x1.25)  
Dev/Ref, Fixed Range

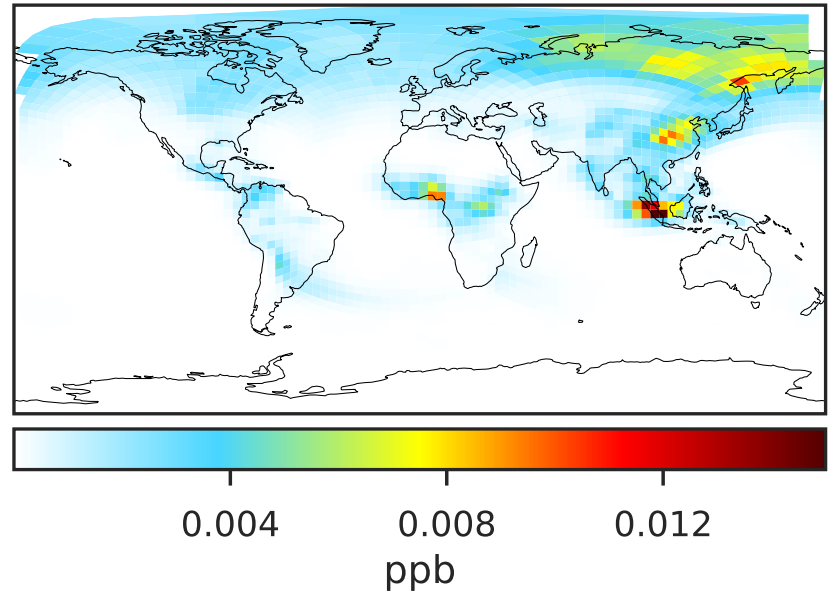


# SpeciesConcVV\_TOLU (Oct2019)

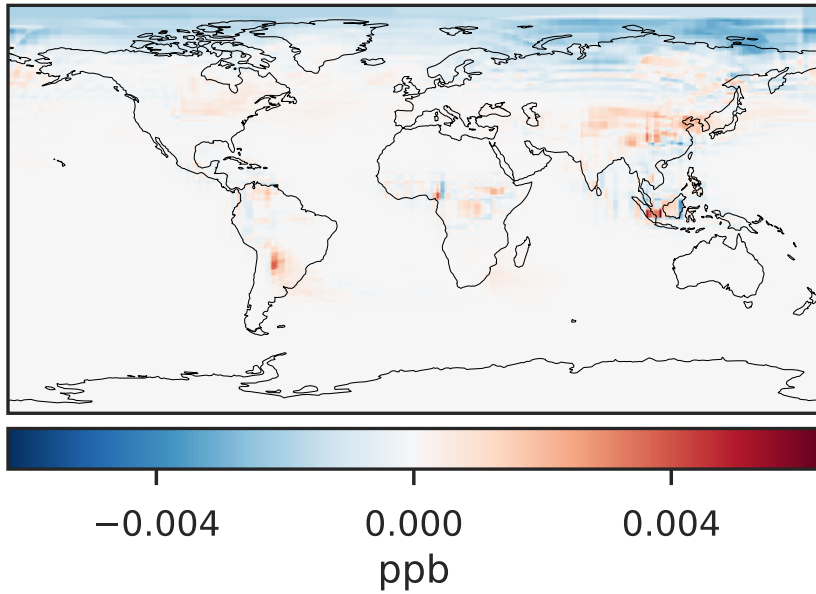
14.3.0-rc.0 (Ref)  
4.0x5.0



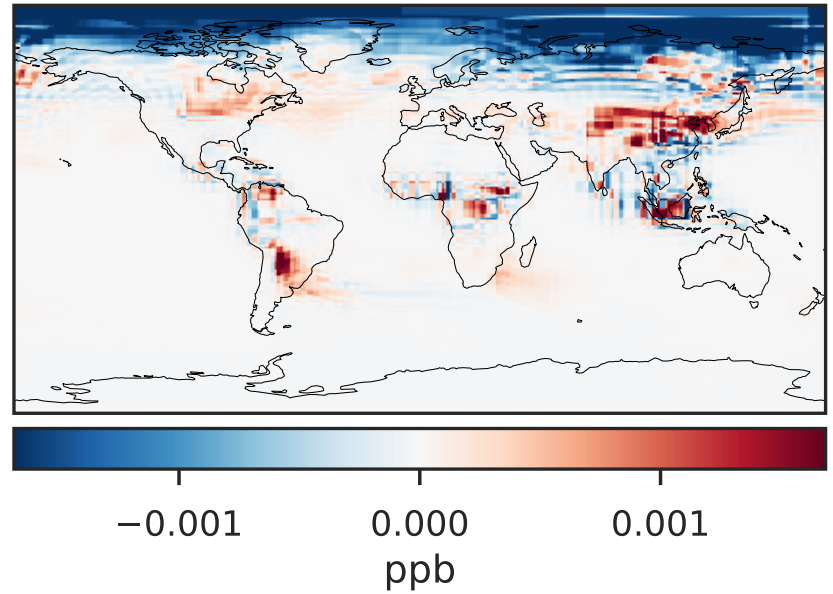
14.3.0-rc.0 (Dev)  
c24



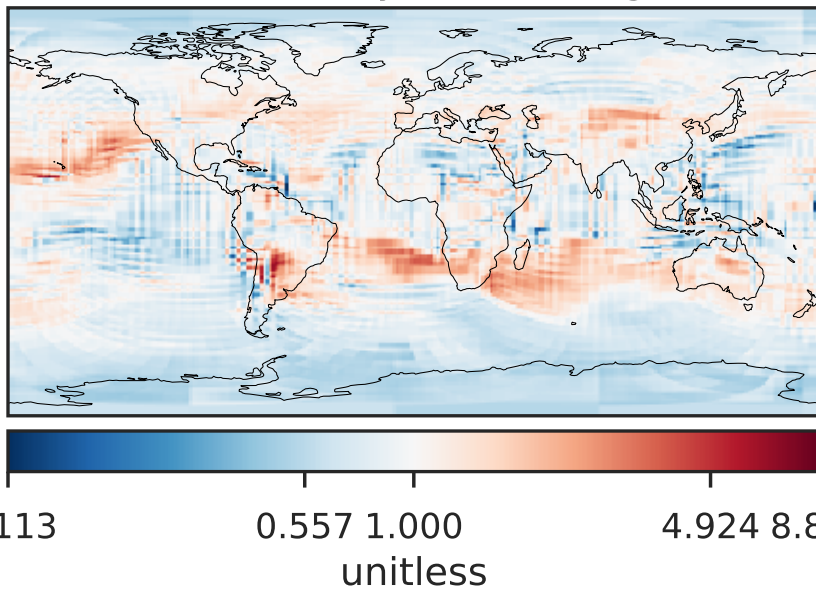
Difference (1x1.25)  
Dev - Ref, Dynamic Range



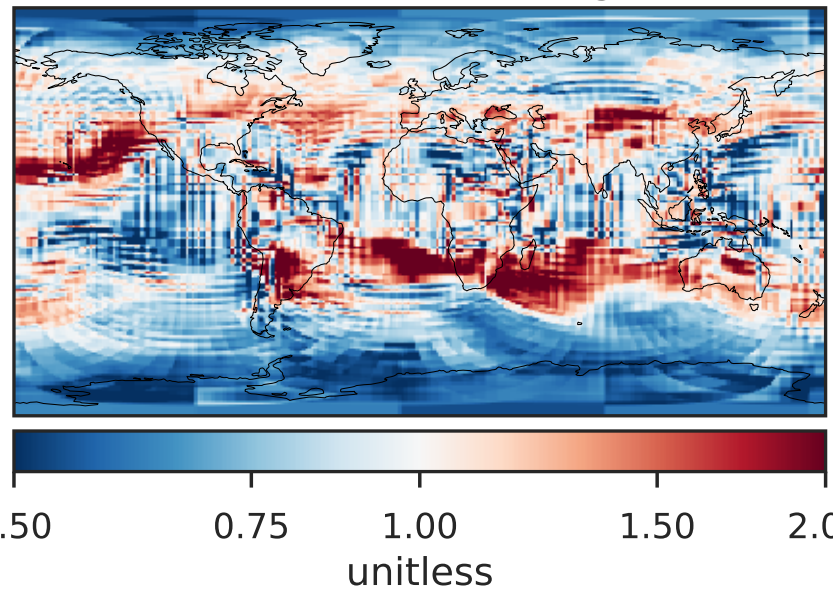
Difference (1x1.25)  
Dev - Ref, Restricted Range [5%,95%]



Ratio (1x1.25)  
Dev/Ref, Dynamic Range

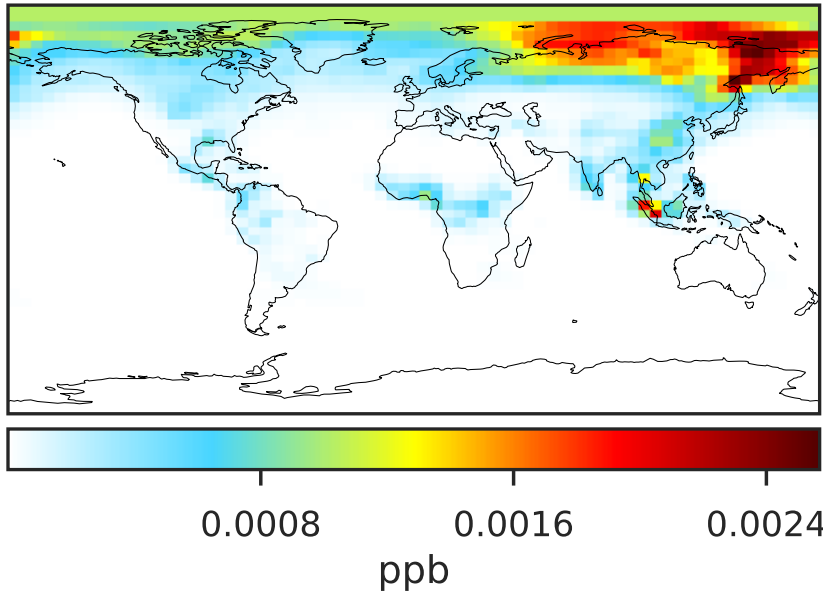


Ratio (1x1.25)  
Dev/Ref, Fixed Range

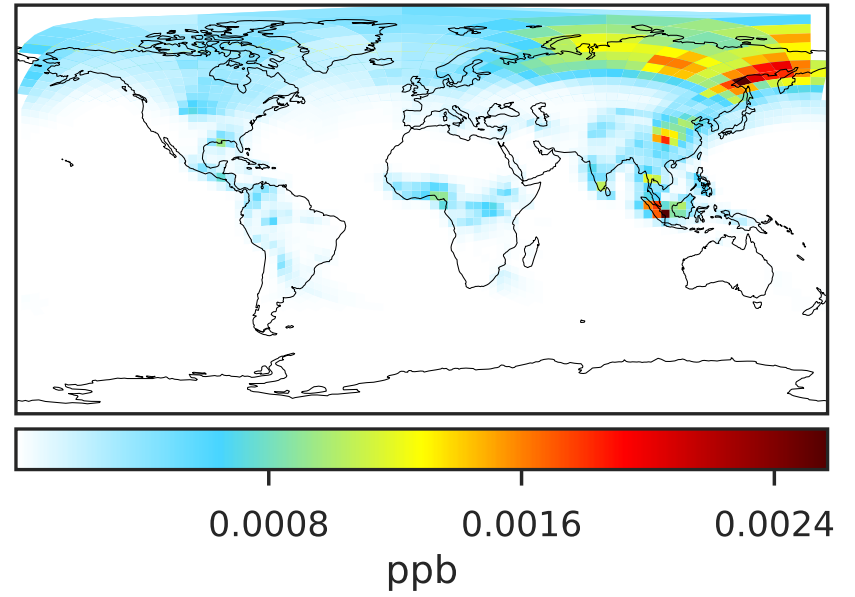


# SpeciesConcVV\_XYLE (Oct2019)

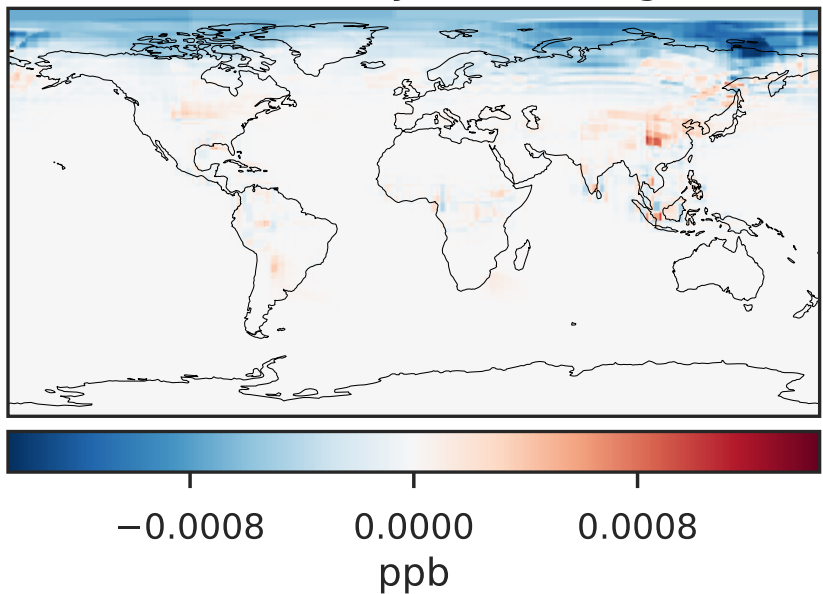
14.3.0-rc.0 (Ref)  
4.0x5.0



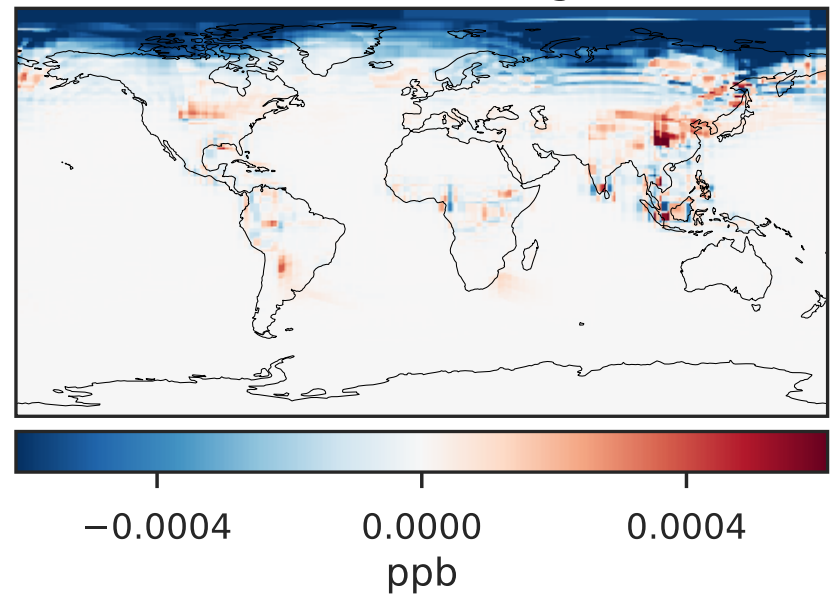
14.3.0-rc.0 (Dev)  
c24



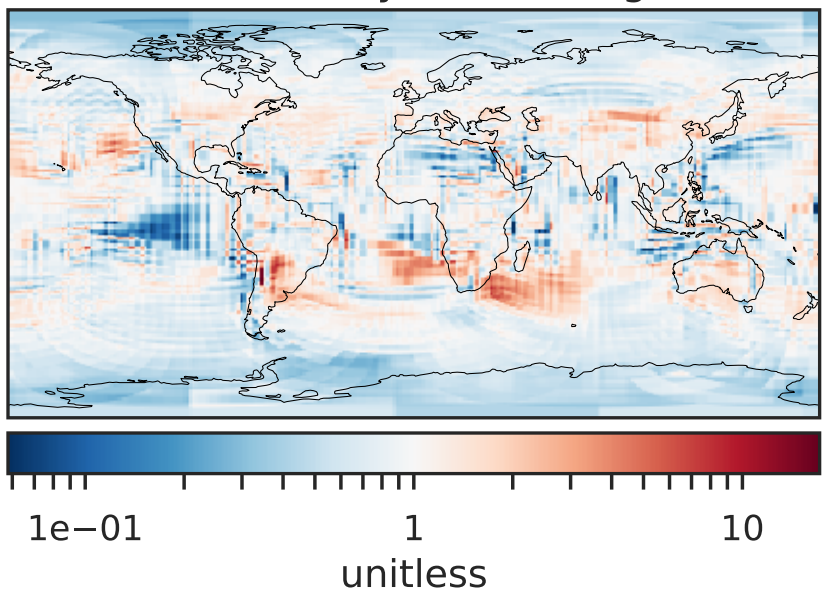
Difference (1x1.25)  
Dev - Ref, Dynamic Range



Difference (1x1.25)  
Dev - Ref, Restricted Range [5%,95%]



Ratio (1x1.25)  
Dev/Ref, Dynamic Range



Ratio (1x1.25)  
Dev/Ref, Fixed Range

