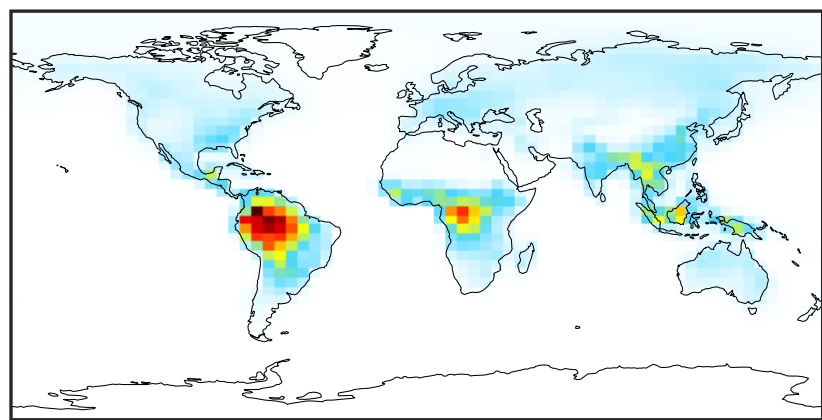


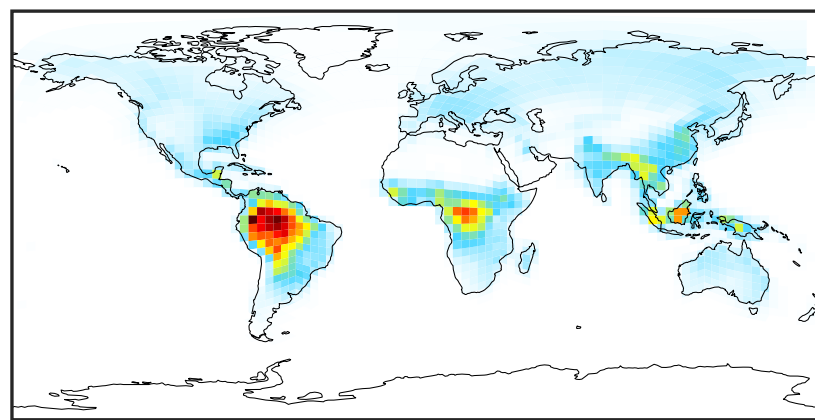
SpeciesConcVW_EOH (Oct2019)

14.3.0-rc.0 (Ref)
4.0x5.0



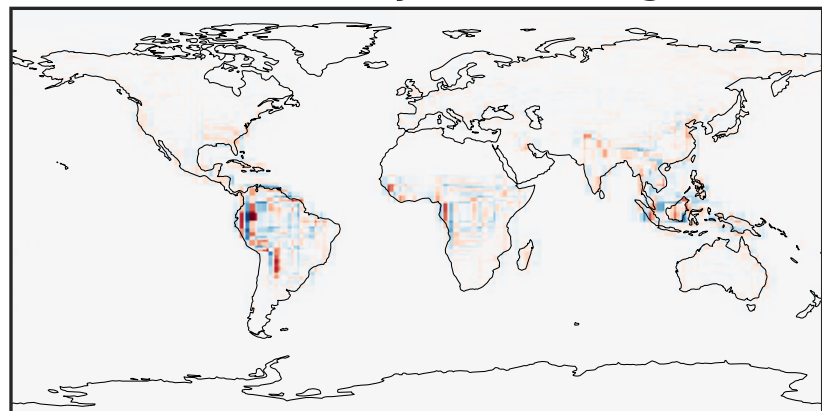
0.000 0.502 1.004 1.505 2.007
ppb

14.3.0-rc.0 (Dev)
c24



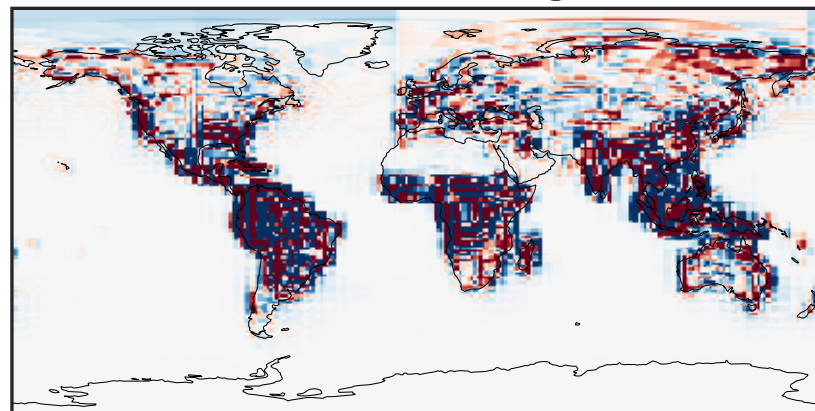
0.000 0.502 1.004 1.505 2.007
ppb

Difference (1x1.25)
Dev - Ref, Dynamic Range



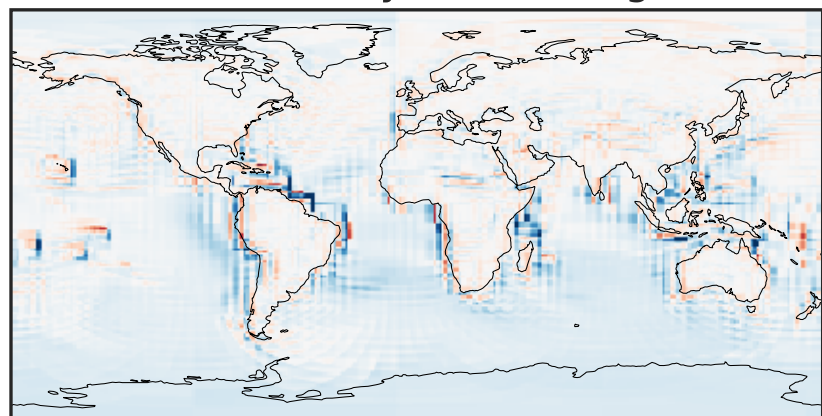
-0.646 -0.323 0.000 0.323 0.646
ppb

Difference (1x1.25)
Dev - Ref, Restricted Range [5%,95%]



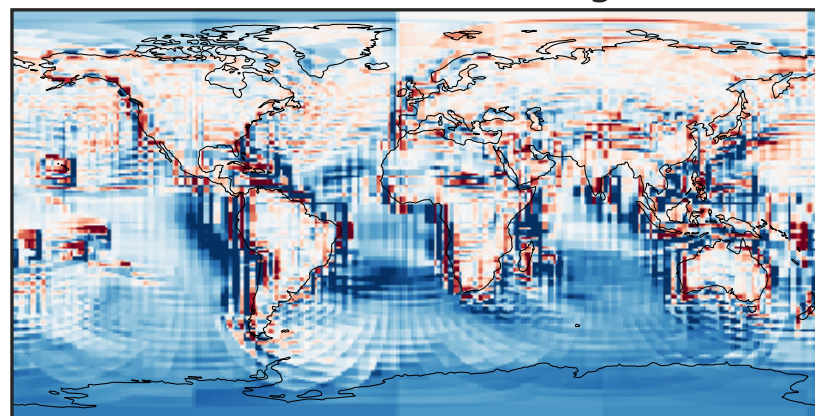
-0.015 0.000 0.015
ppb

Ratio (1x1.25)
Dev/Ref, Dynamic Range



1e-01 1 10
unitless

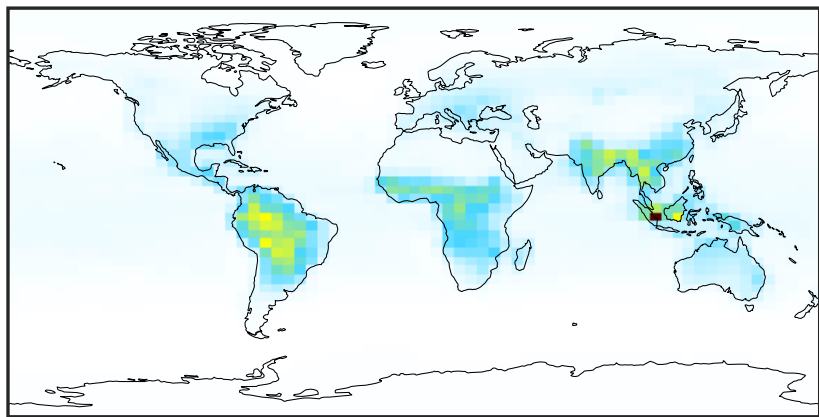
Ratio (1x1.25)
Dev/Ref, Fixed Range



0.50 0.75 1.00 1.50 2.00
unitless

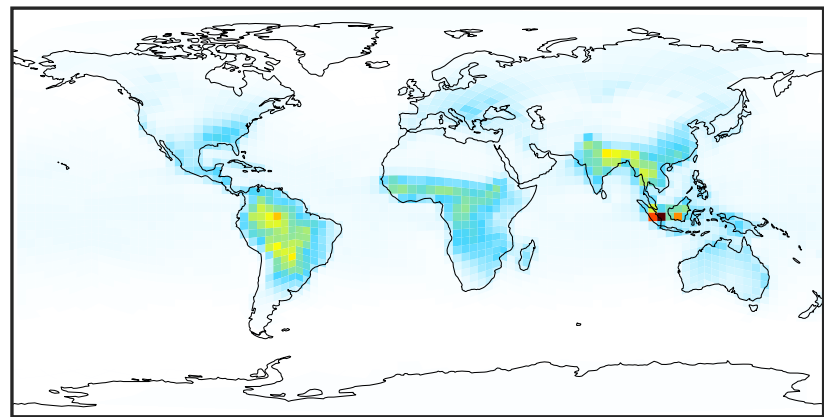
SpeciesConcVV_MOH (Oct2019)

14.3.0-rc.0 (Ref)
4.0x5.0



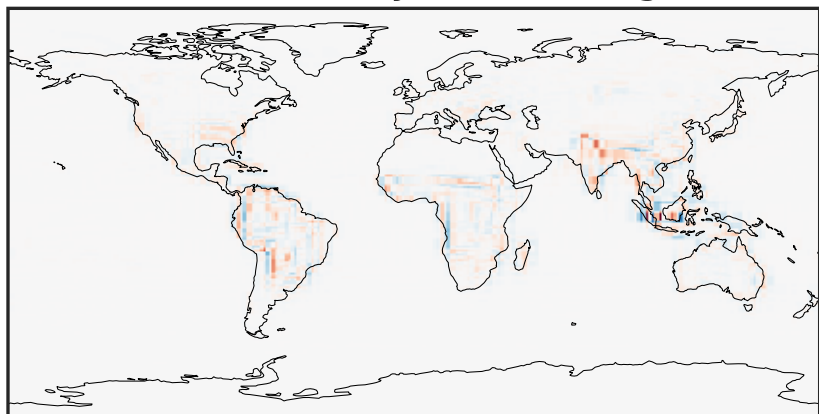
0.03 3.61 7.18 10.76 14.33
ppb

14.3.0-rc.0 (Dev)
c24



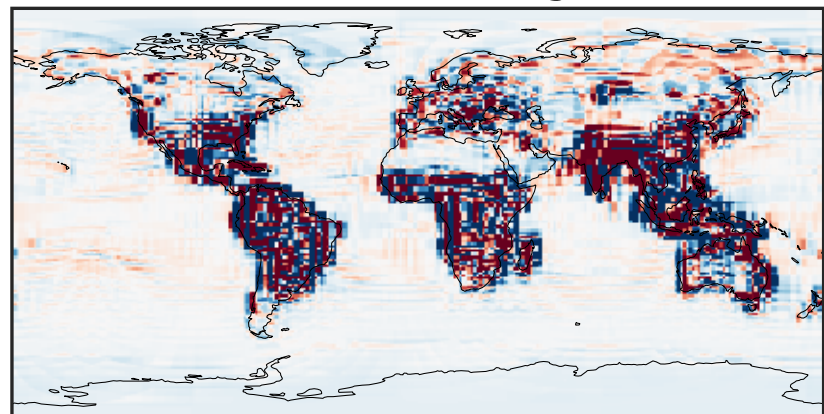
0.03 3.61 7.18 10.76 14.33
ppb

Difference (1x1.25)
Dev - Ref, Dynamic Range



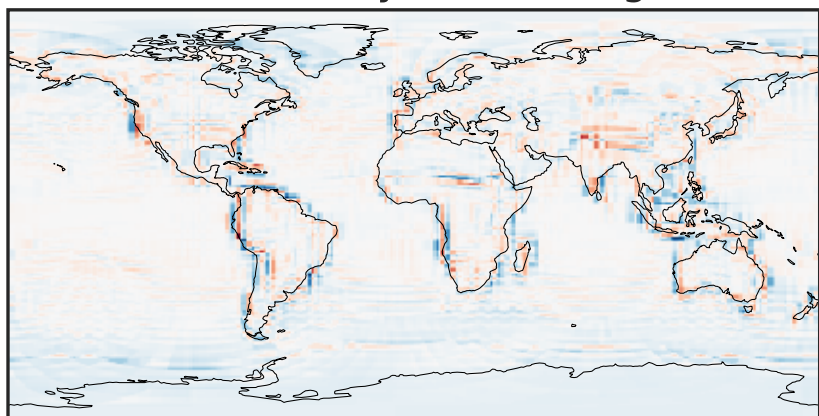
-4.872 -2.436 0.000 2.436 4.872
ppb

Difference (1x1.25)
Dev - Ref, Restricted Range [5%,95%]



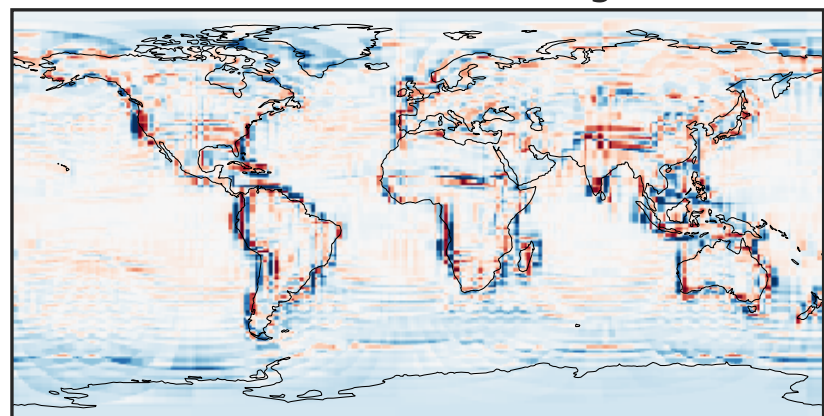
-0.152 -0.076 0.000 0.076 0.152
ppb

Ratio (1x1.25)
Dev/Ref, Dynamic Range



0.211 0.606 1.000 2.865 4.729
unitless

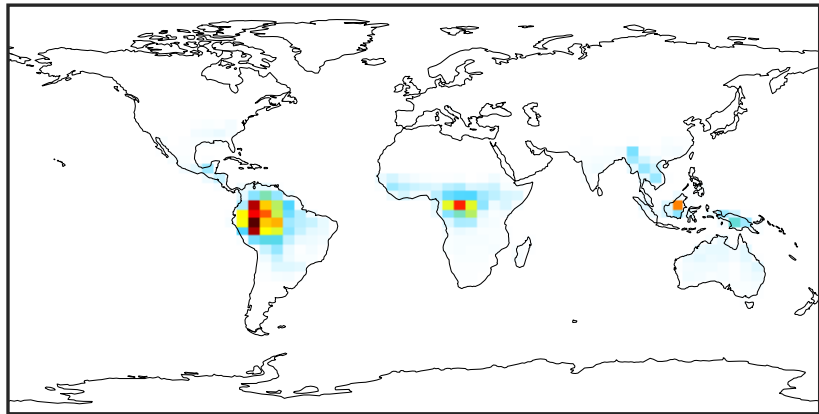
Ratio (1x1.25)
Dev/Ref, Fixed Range



0.50 0.75 1.00 1.50 2.00
unitless

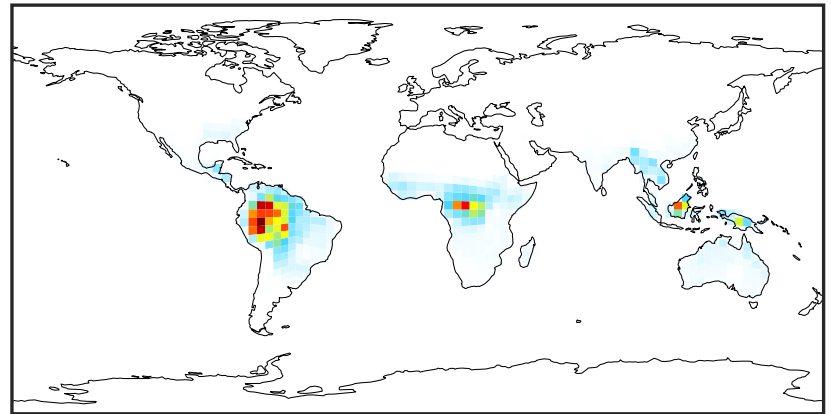
SpeciesConcVV_ISOP (Oct2019)

14.3.0-rc.0 (Ref)
4.0x5.0



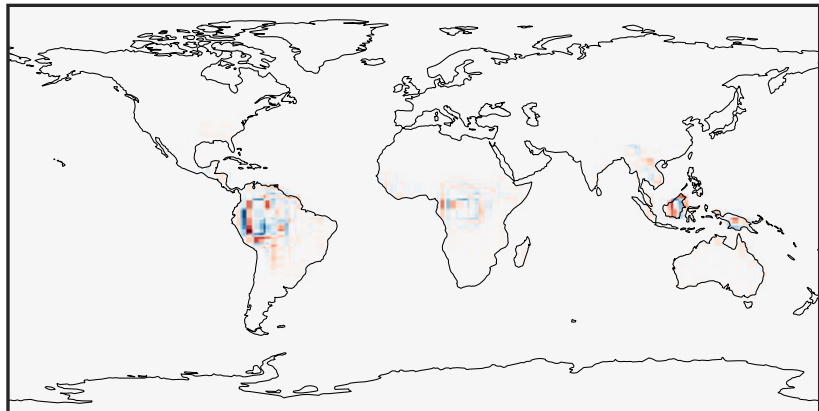
0.000 2.298 4.595 6.893 9.190
ppb

14.3.0-rc.0 (Dev)
c24



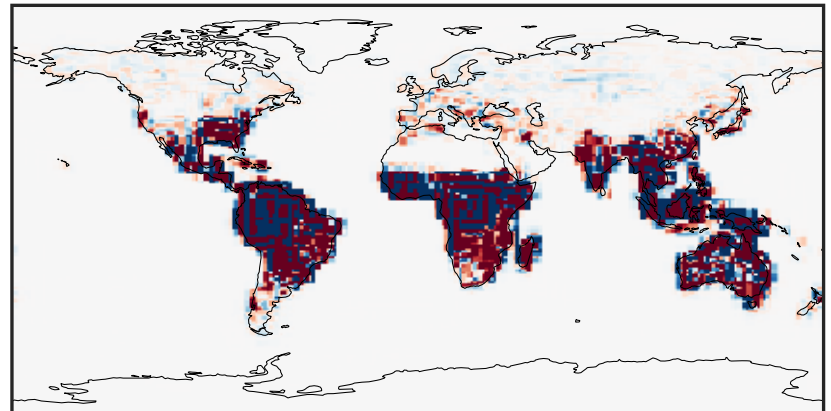
0.000 2.298 4.595 6.893 9.190
ppb

Difference (1x1.25)
Dev - Ref, Dynamic Range



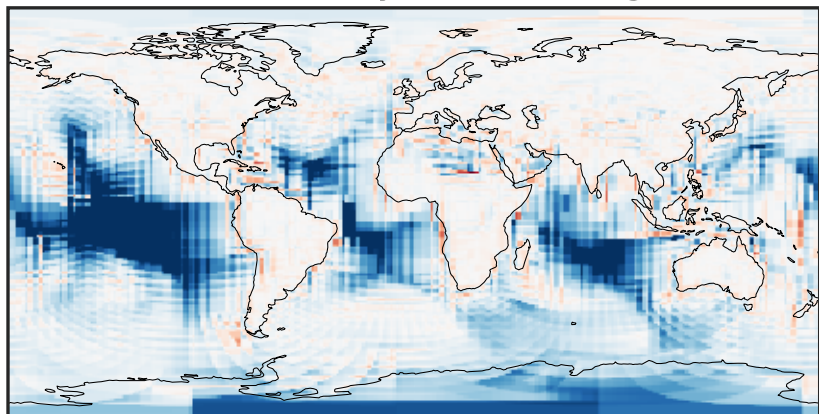
-3.674 -1.837 0.000 1.837 3.674
ppb

Difference (1x1.25)
Dev - Ref, Restricted Range [5%,95%]



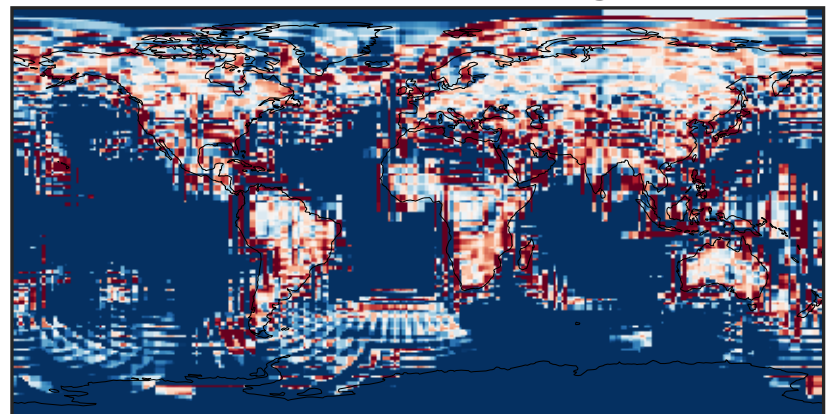
-0.01 0.00 0.01
ppb

Ratio (1x1.25)
Dev/Ref, Dynamic Range



1e-03 1e-02 1e-01 1 10 100 1000
unitless

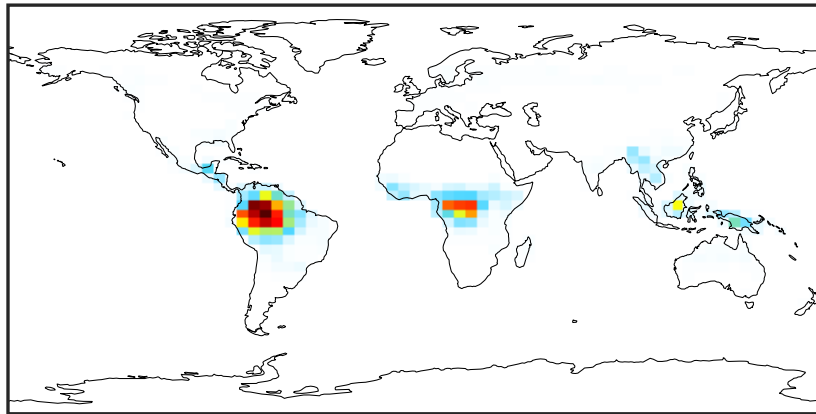
Ratio (1x1.25)
Dev/Ref, Fixed Range



0.50 0.75 1.00 1.50 2.00
unitless

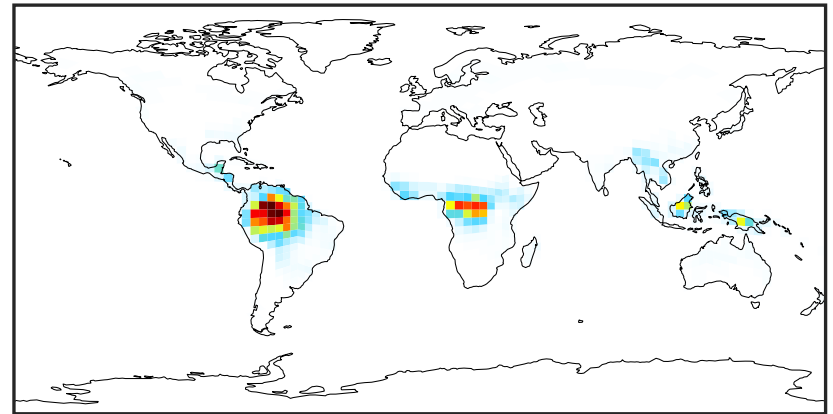
SpeciesConcVV_MTPA (Oct2019)

14.3.0-rc.0 (Ref)
4.0x5.0



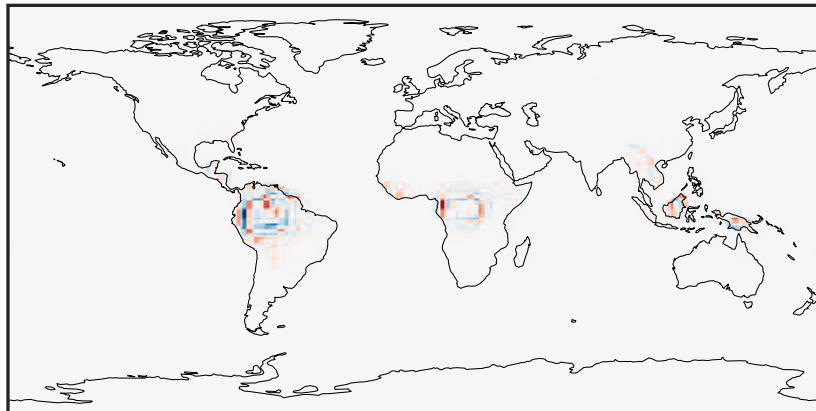
0.000 0.492 0.985 1.477 1.969
ppb

14.3.0-rc.0 (Dev)
c24



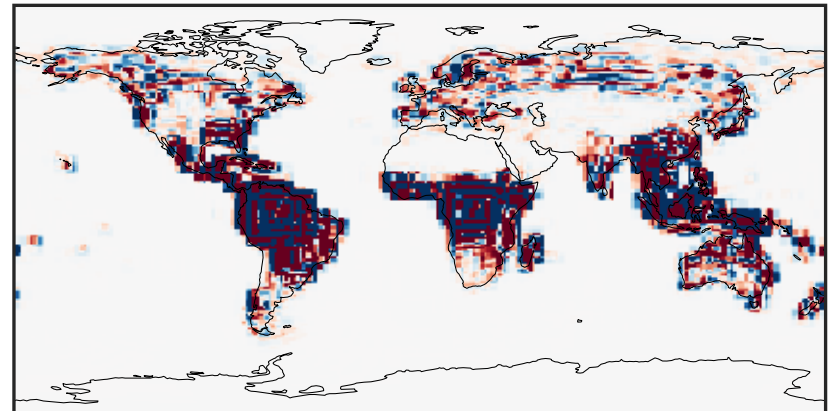
0.000 0.492 0.985 1.477 1.969
ppb

Difference (1x1.25)
Dev - Ref, Dynamic Range



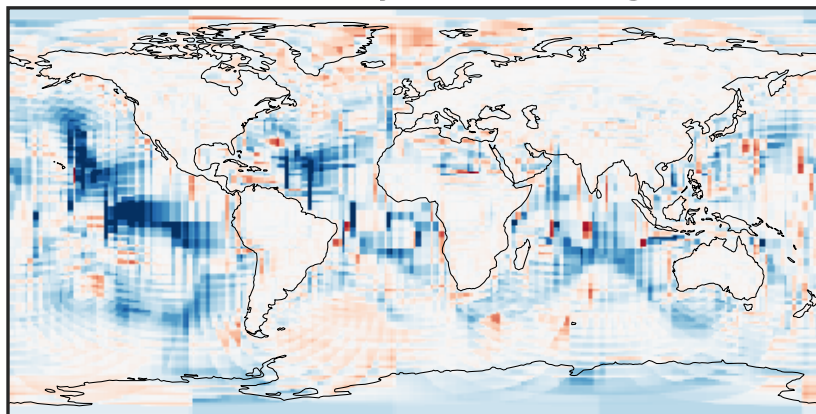
-0.812 -0.406 0.000 0.406 0.812
ppb

Difference (1x1.25)
Dev - Ref, Restricted Range [5%,95%]



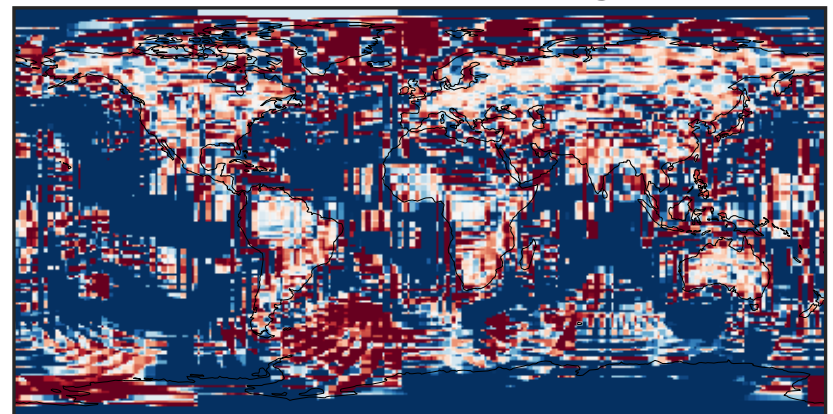
-0.002 0.000 0.002
ppb

Ratio (1x1.25)
Dev/Ref, Dynamic Range



unitless

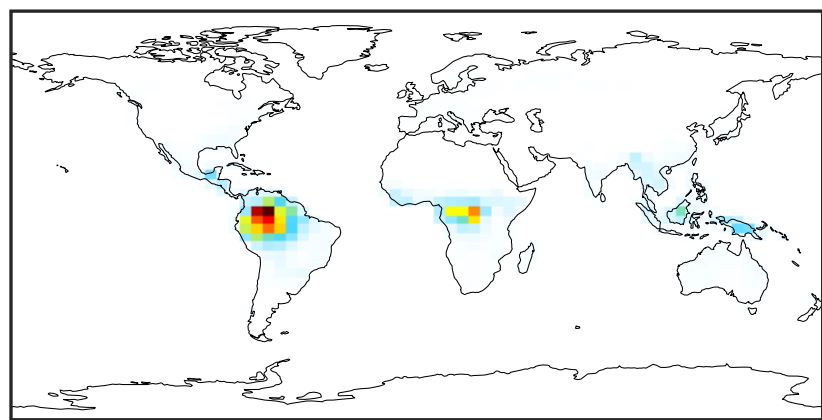
Ratio (1x1.25)
Dev/Ref, Fixed Range



0.50 0.75 1.00 1.50 2.00
unitless

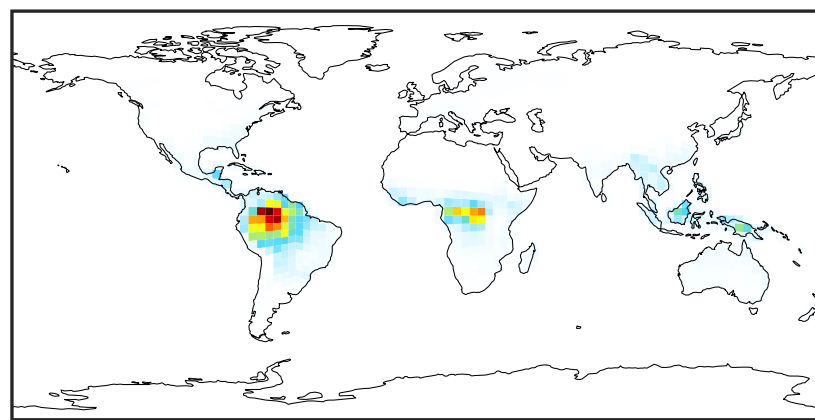
SpeciesConcVV_MTPO (Oct2019)

14.3.0-rc.0 (Ref)
4.0x5.0



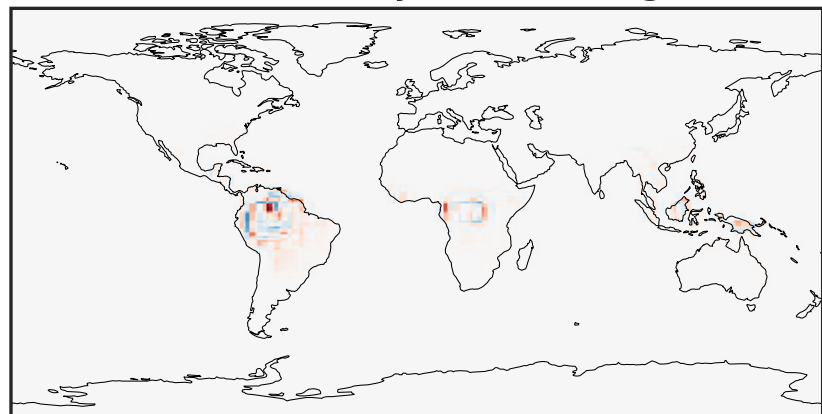
0.0000 0.0329 0.0657 0.0986 0.1315
ppb

14.3.0-rc.0 (Dev)
c24



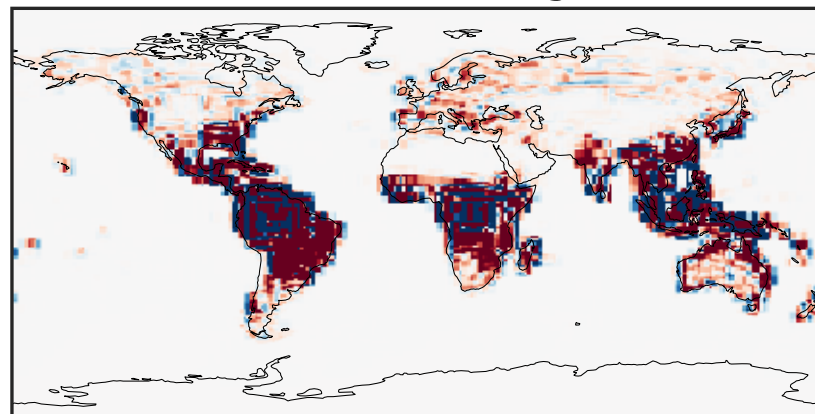
0.0000 0.0329 0.0657 0.0986 0.1315
ppb

Difference (1x1.25)
Dev - Ref, Dynamic Range



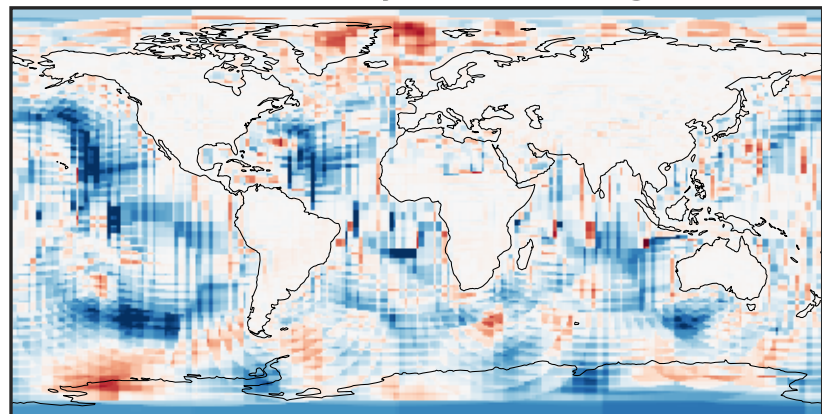
-0.0599 -0.0299 0.0000 0.0299 0.0599
ppb

Difference (1x1.25)
Dev - Ref, Restricted Range [5%,95%]



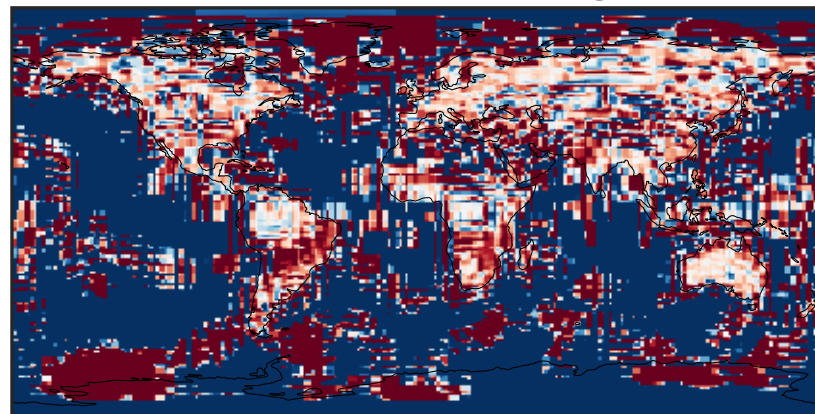
-0.00025 0.00000 0.00025
ppb

Ratio (1x1.25)
Dev/Ref, Dynamic Range



1e-05 1e-02 10 1e4 1e+07
unitless

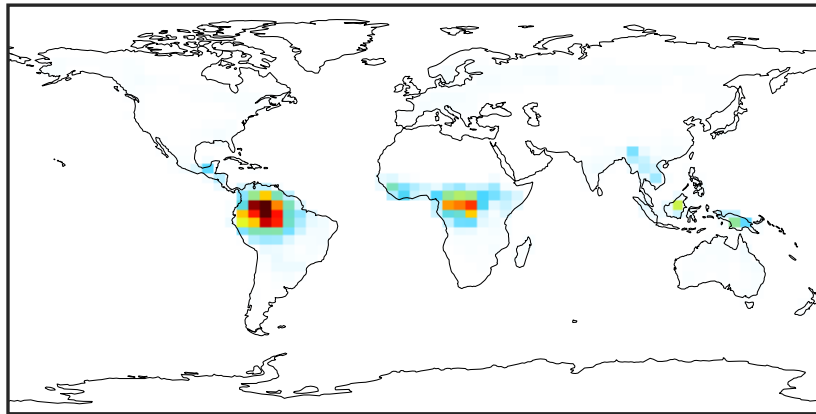
Ratio (1x1.25)
Dev/Ref, Fixed Range



0.50 0.75 1.00 1.50 2.00
unitless

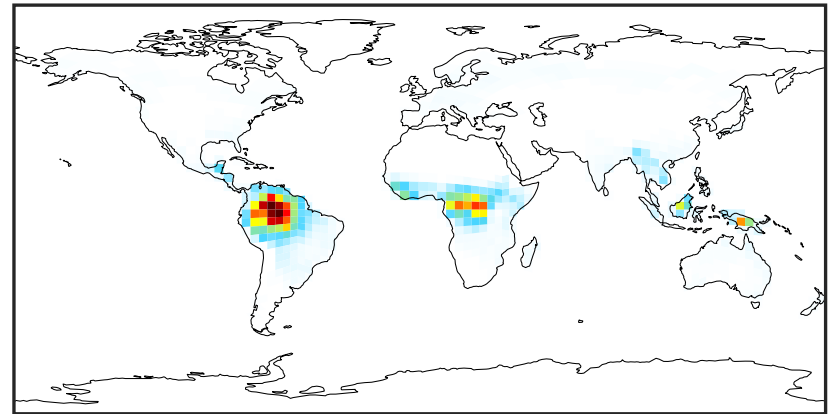
SpeciesConcVV_LIMO (Oct2019)

14.3.0-rc.0 (Ref)
4.0x5.0



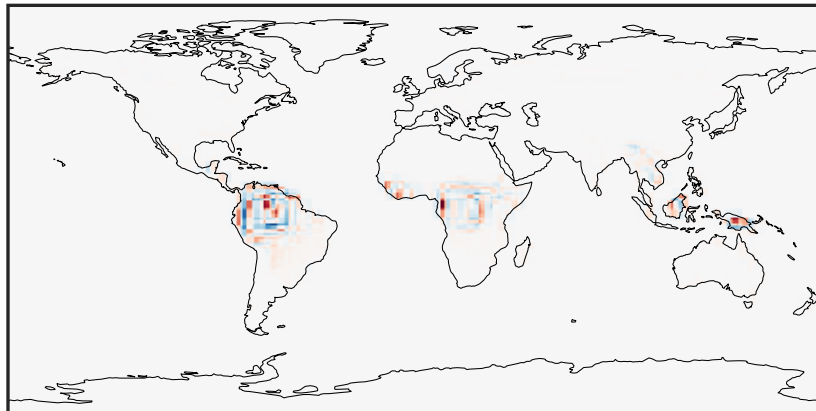
0.0000 0.0259 0.0518 0.0777 0.1036
ppb

14.3.0-rc.0 (Dev)
c24



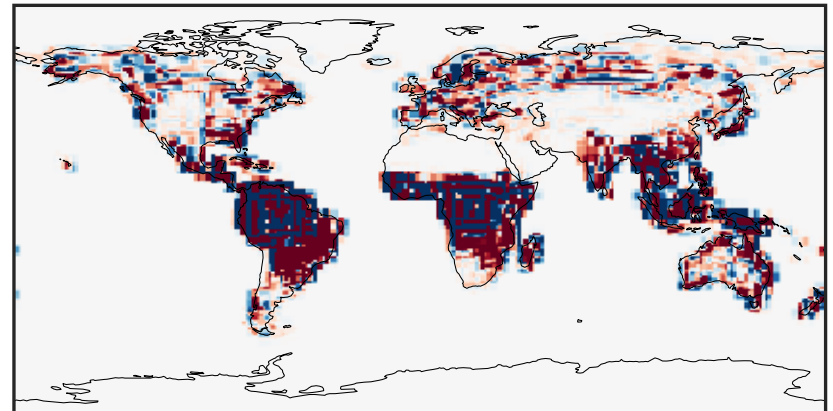
0.0000 0.0259 0.0518 0.0777 0.1036
ppb

Difference (1x1.25)
Dev - Ref, Dynamic Range



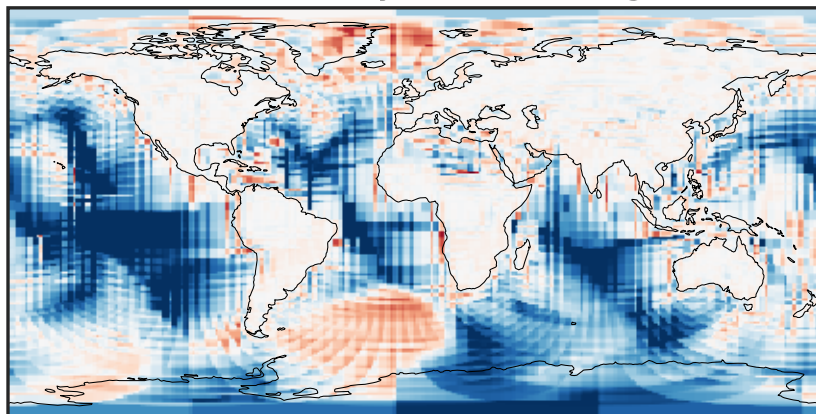
-0.02 0.00 0.02
ppb

Difference (1x1.25)
Dev - Ref, Restricted Range [5%,95%]



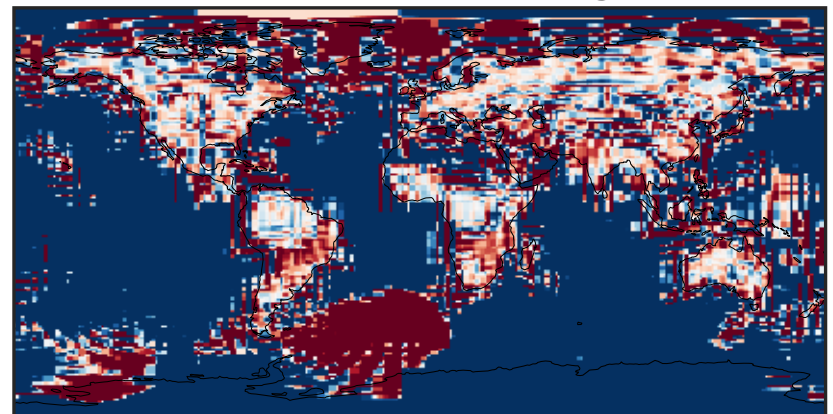
-0.00015 0.00000 0.00015
ppb

Ratio (1x1.25)
Dev/Ref, Dynamic Range



unitless

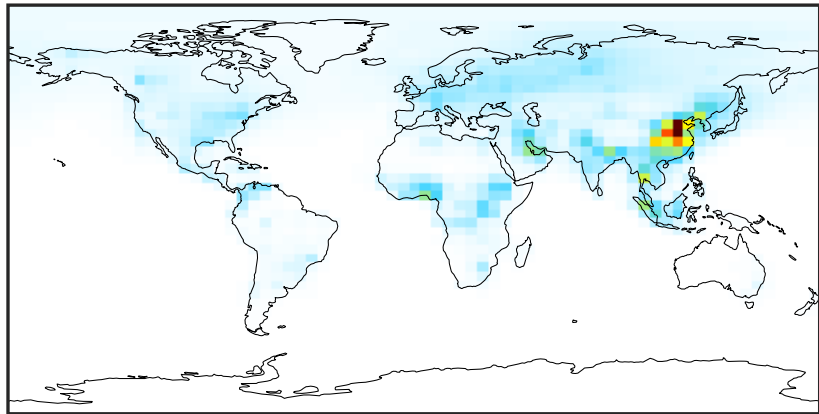
Ratio (1x1.25)
Dev/Ref, Fixed Range



0.50 0.75 1.00 1.50 2.00
unitless

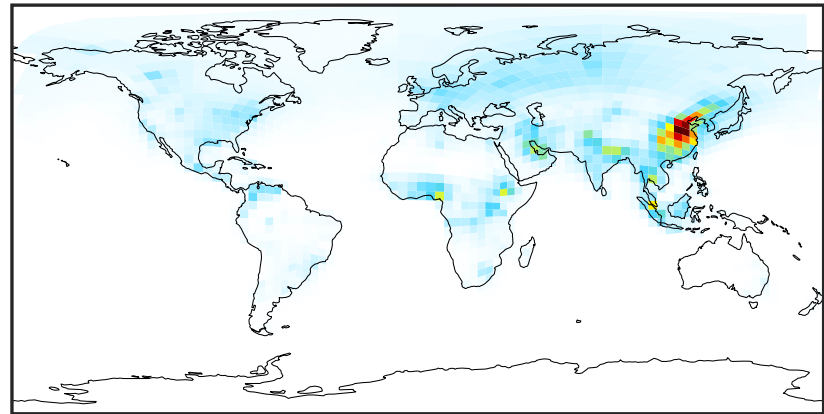
SpeciesConcVV_ALK4 (Oct2019)

14.3.0-rc.0 (Ref)
4.0x5.0



0.00 2.75 5.51 8.26 11.01
ppb

14.3.0-rc.0 (Dev)
c24



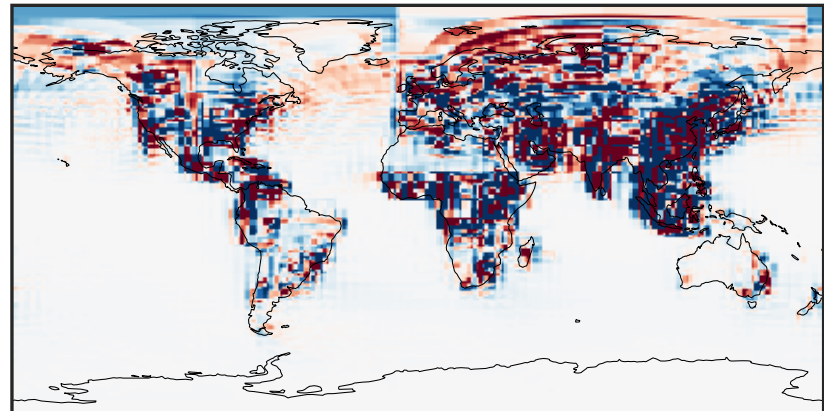
0.00 2.75 5.51 8.26 11.01
ppb

Difference (1x1.25)
Dev - Ref, Dynamic Range



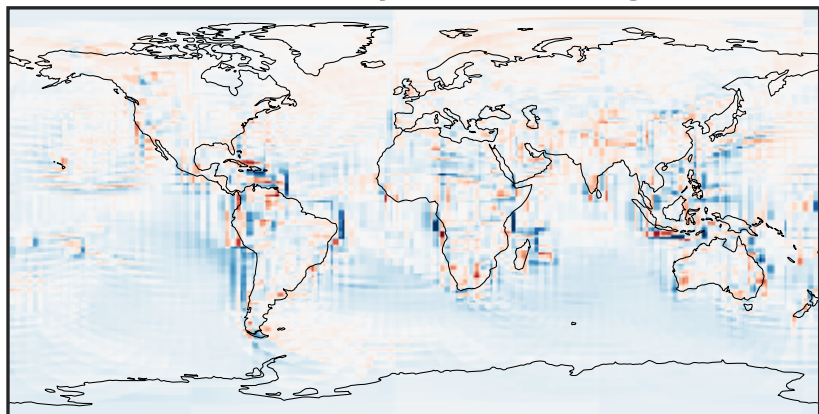
-5.8 -2.9 0.0 2.9 5.8
ppb

Difference (1x1.25)
Dev - Ref, Restricted Range [5%,95%]



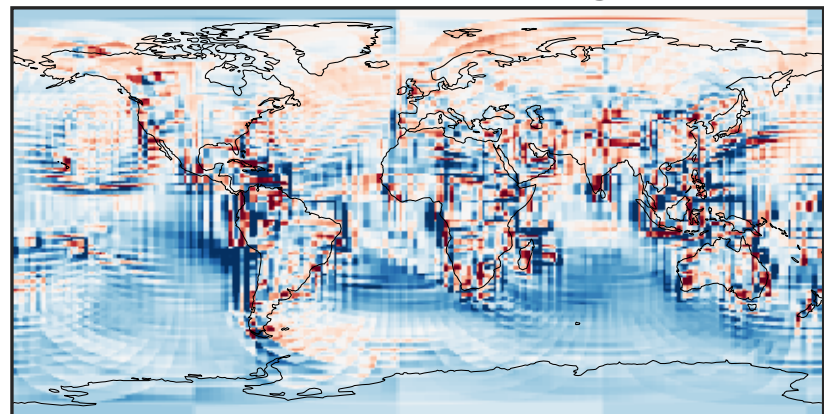
-0.1088 -0.0544 0.0000 0.0544 0.1088
ppb

Ratio (1x1.25)
Dev/Ref, Dynamic Range



0.102 0.551 1.000 5.418 9.836
unitless

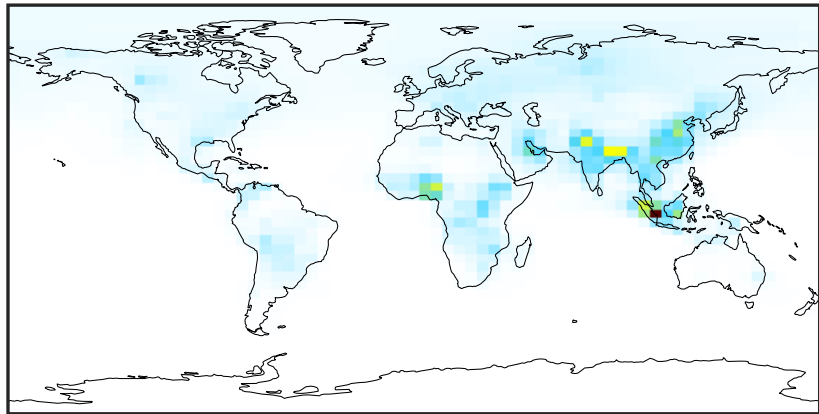
Ratio (1x1.25)
Dev/Ref, Fixed Range



0.50 0.75 1.00 1.50 2.00
unitless

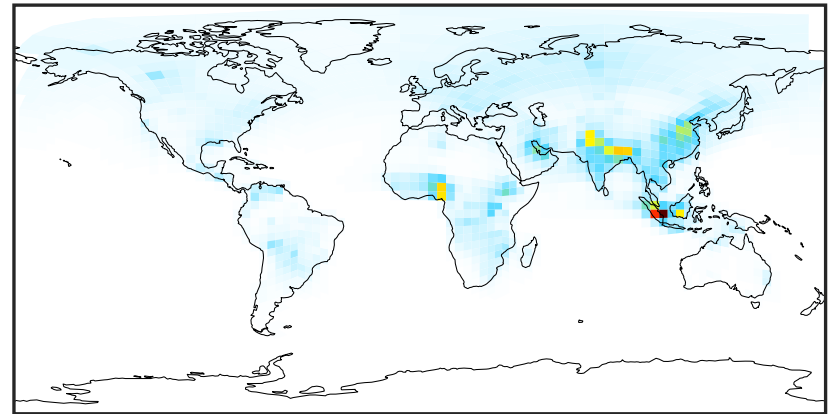
SpeciesConcVV_BENZ (Oct2019)

14.3.0-rc.0 (Ref)
4.0x5.0



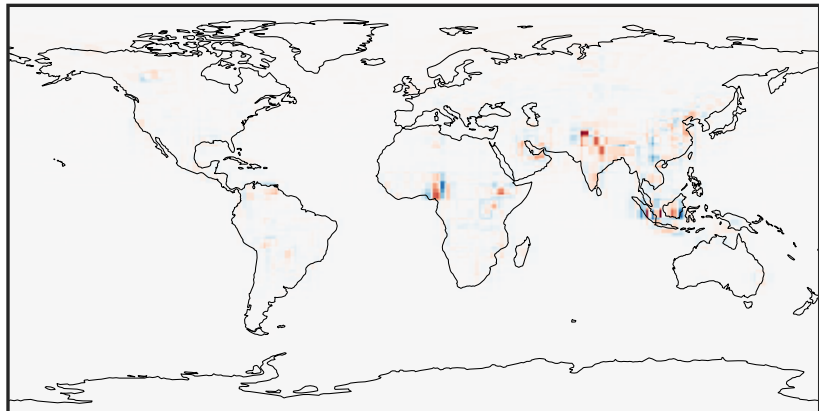
0.000 0.401 0.801 1.202 1.603
ppb

14.3.0-rc.0 (Dev)
c24



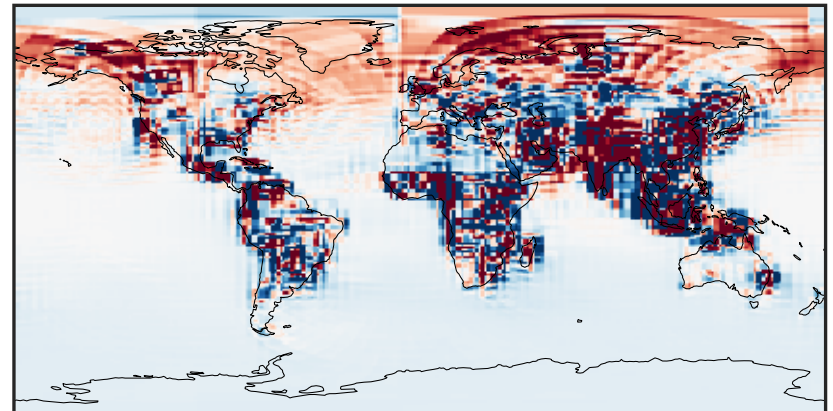
0.000 0.401 0.801 1.202 1.603
ppb

Difference (1x1.25)
Dev - Ref, Dynamic Range



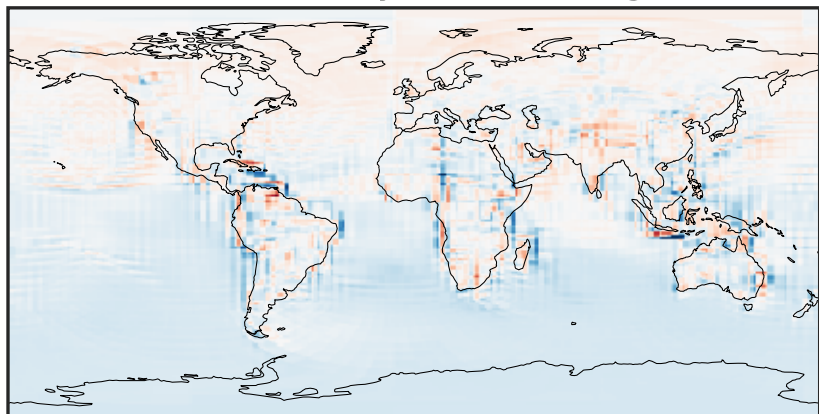
-0.568 -0.284 0.000 0.284 0.568
ppb

Difference (1x1.25)
Dev - Ref, Restricted Range [5%,95%]



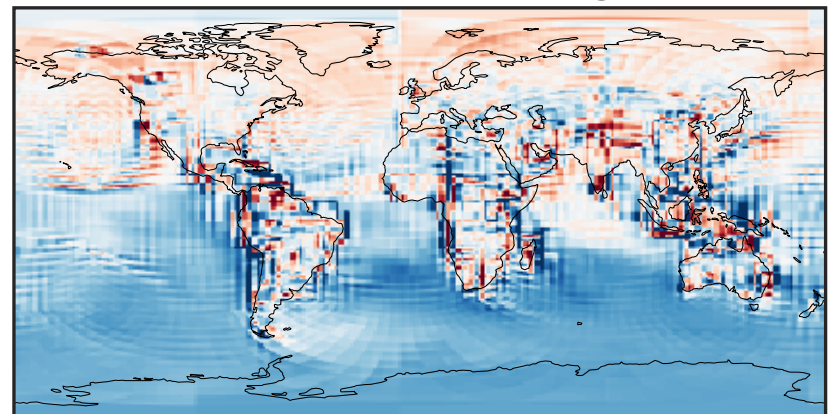
-0.008 0.000 0.008
ppb

Ratio (1x1.25)
Dev/Ref, Dynamic Range



0.117 0.559 1.000 4.760 8.519
unitless

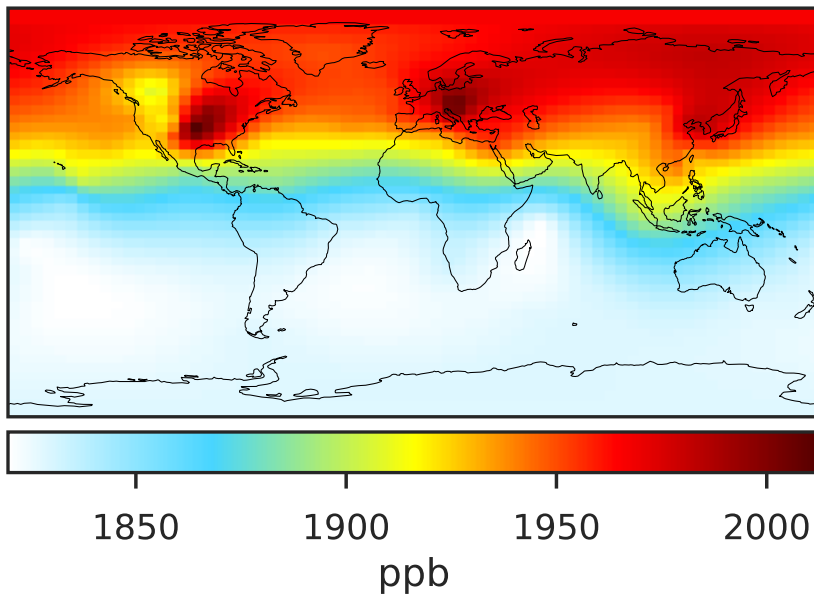
Ratio (1x1.25)
Dev/Ref, Fixed Range



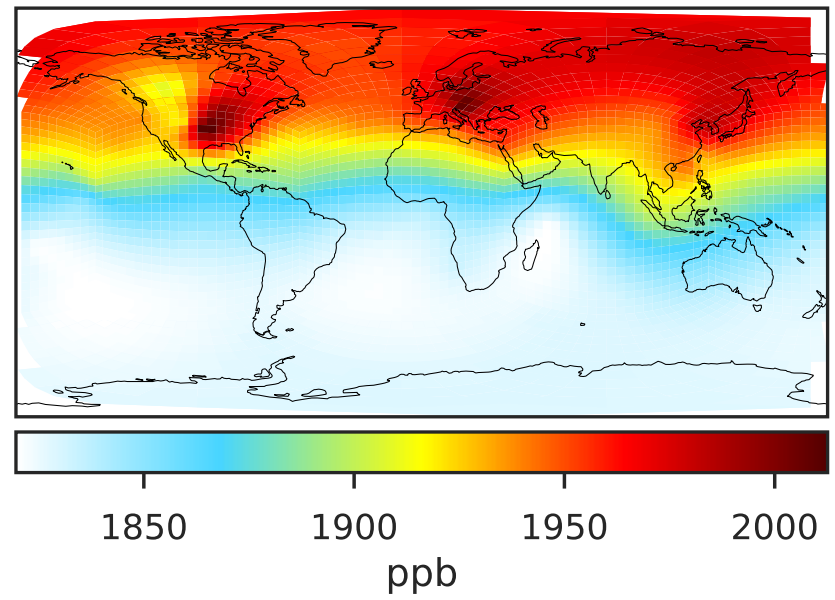
0.50 0.75 1.00 1.50 2.00
unitless

SpeciesConcVV_CH4 (Oct2019)

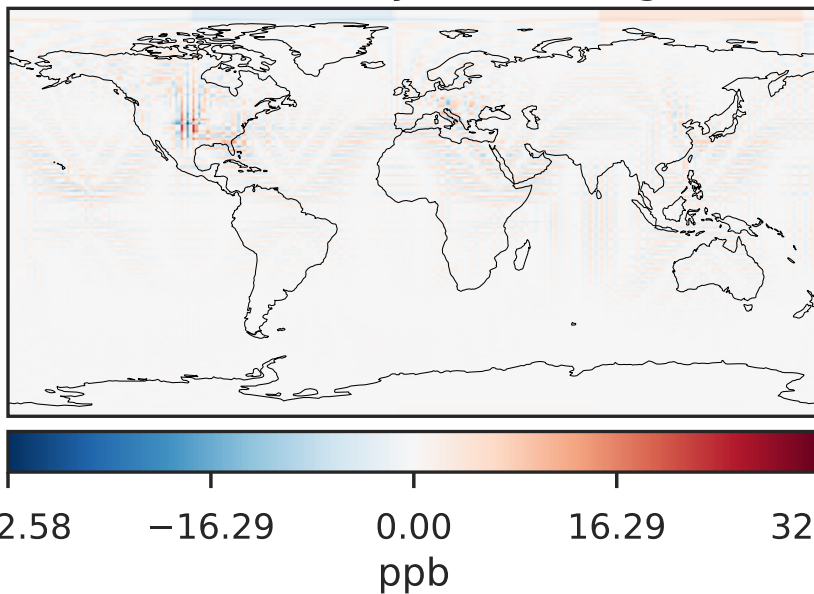
14.3.0-rc.0 (Ref)
4.0x5.0



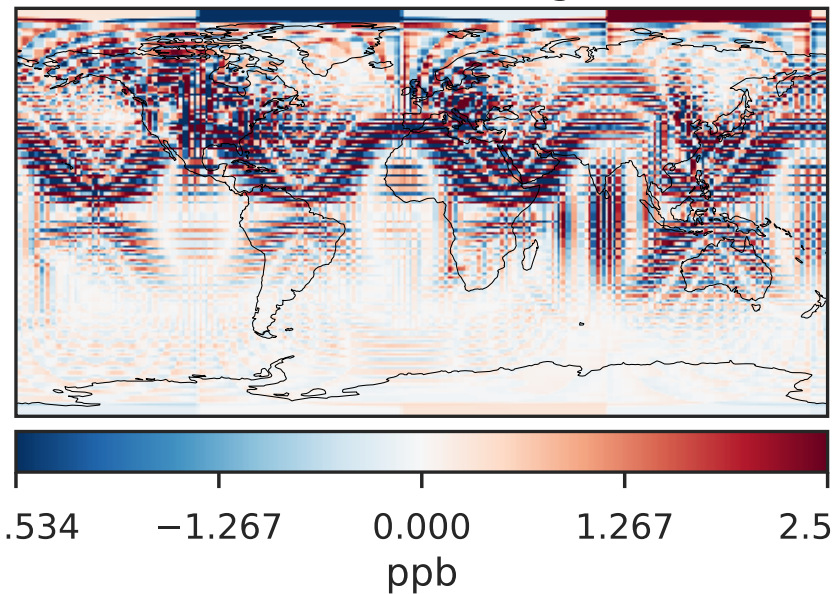
14.3.0-rc.0 (Dev)
c24



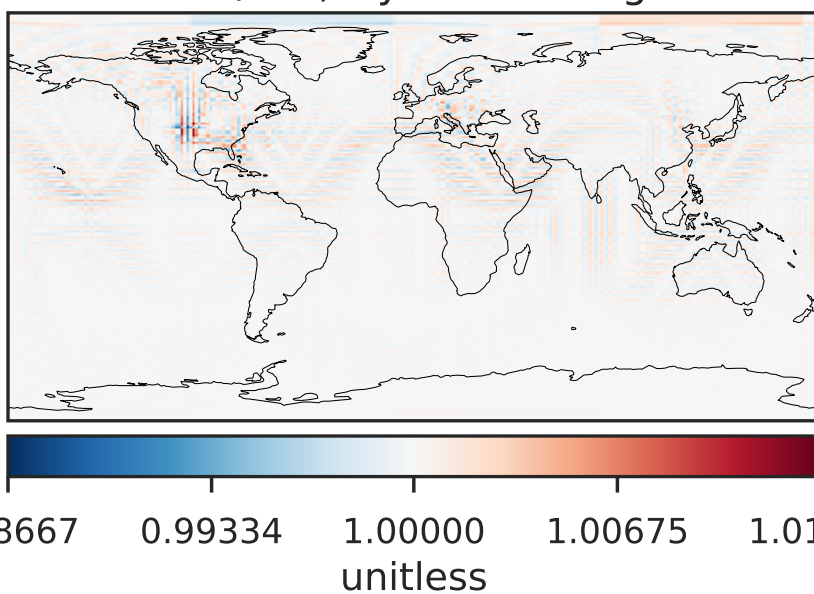
Difference (1x1.25)
Dev - Ref, Dynamic Range



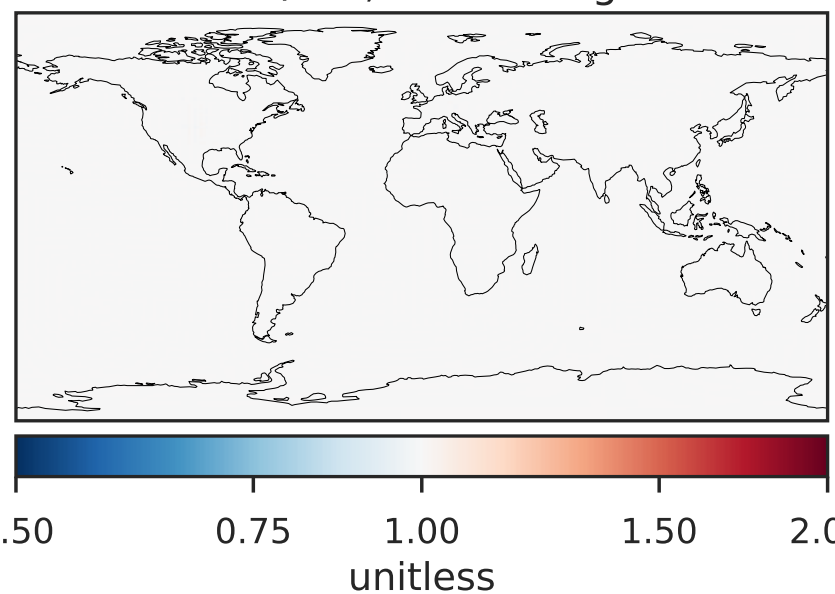
Difference (1x1.25)
Dev - Ref, Restricted Range [5%,95%]



Ratio (1x1.25)
Dev/Ref, Dynamic Range

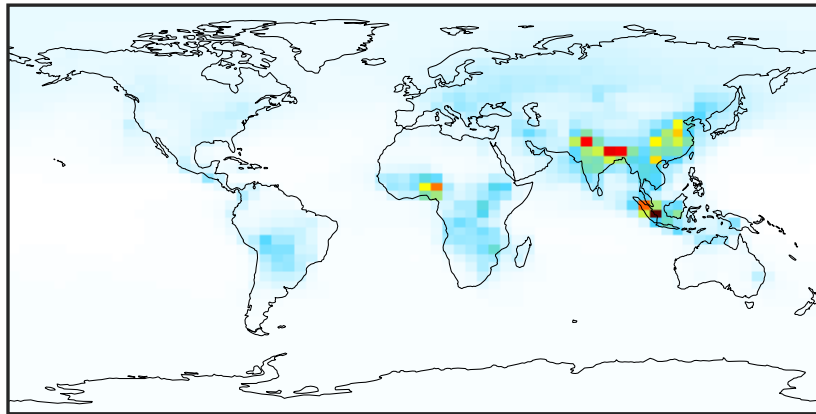


Ratio (1x1.25)
Dev/Ref, Fixed Range



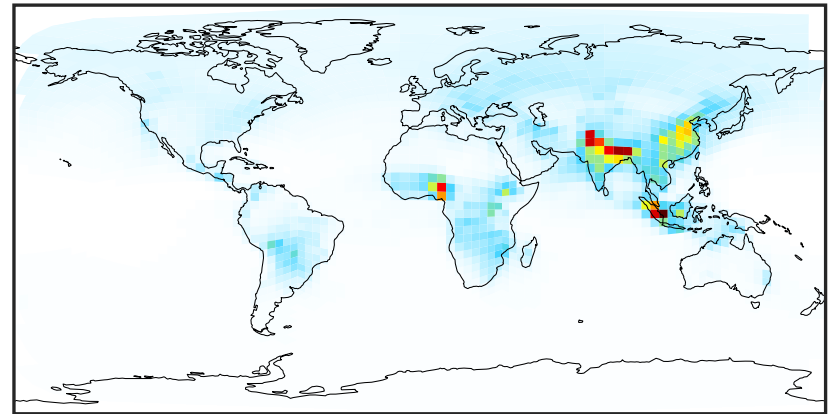
SpeciesConcVV_C2H2 (Oct2019)

14.3.0-rc.0 (Ref)
4.0x5.0



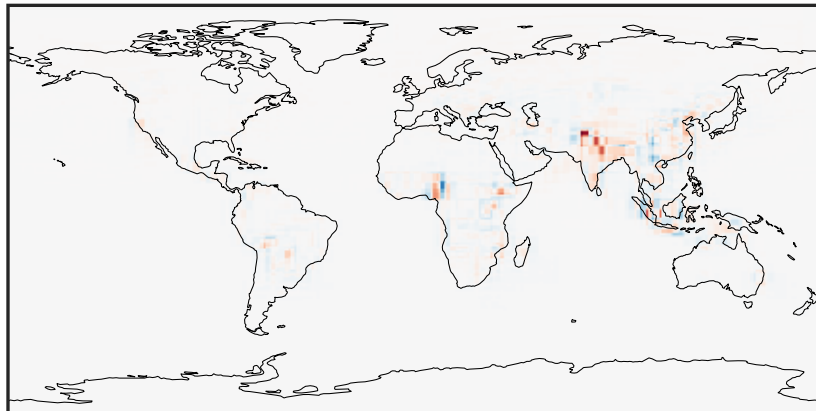
0.004 0.549 1.095 1.641 2.187
ppb

14.3.0-rc.0 (Dev)
c24



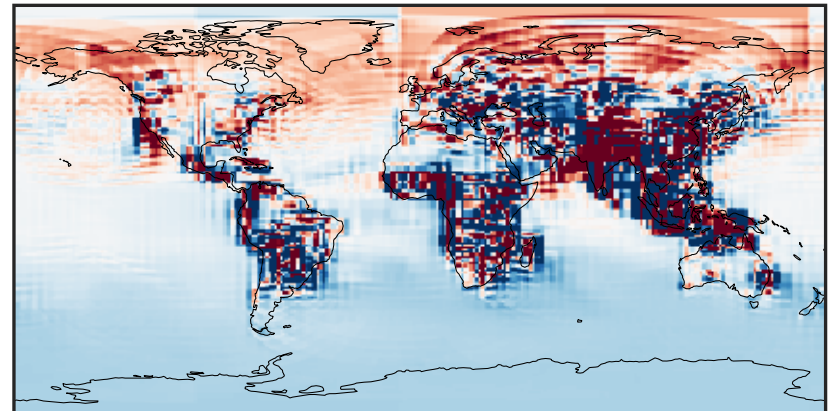
0.004 0.549 1.095 1.641 2.187
ppb

Difference (1x1.25)
Dev - Ref, Dynamic Range



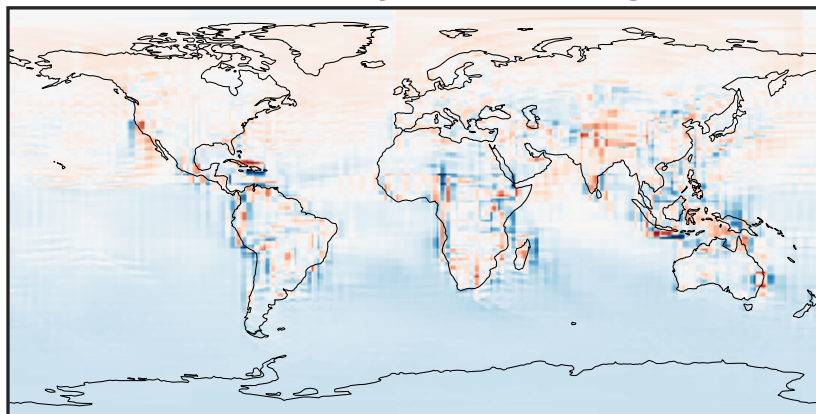
-1.2 -0.6 0.0 0.6 1.2
ppb

Difference (1x1.25)
Dev - Ref, Restricted Range [5%,95%]



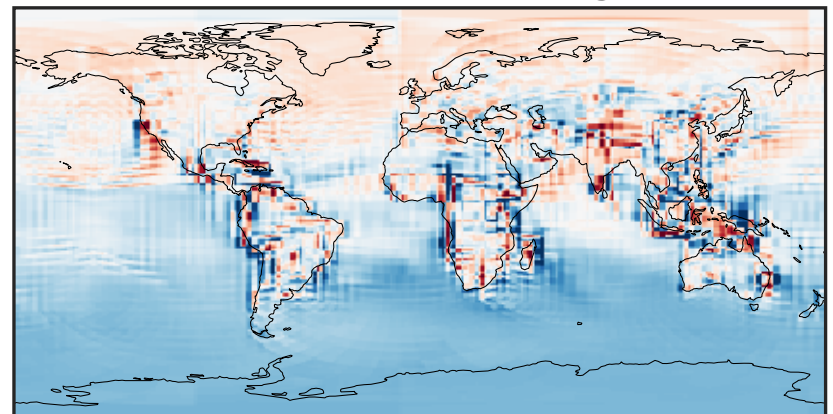
-0.015 0.000 0.015
ppb

Ratio (1x1.25)
Dev/Ref, Dynamic Range



0.239 0.620 1.000 2.589 4.178
unitless

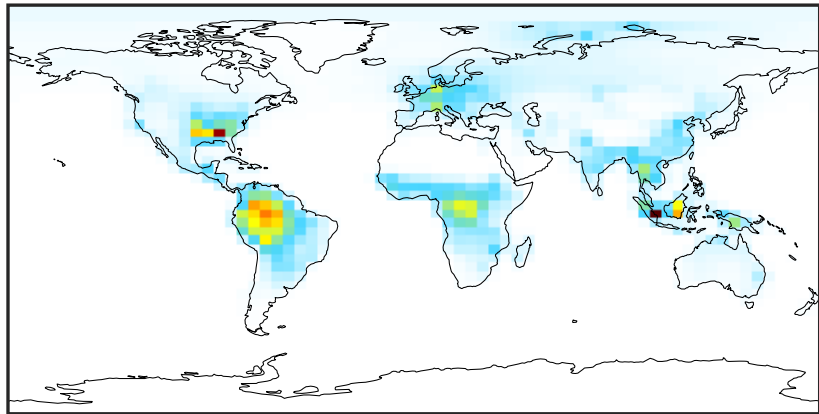
Ratio (1x1.25)
Dev/Ref, Fixed Range



0.50 0.75 1.00 1.50 2.00
unitless

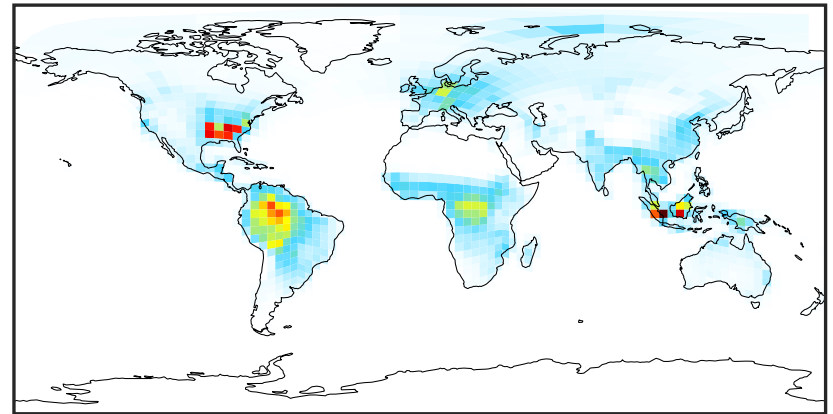
SpeciesConcVV_C2H4 (Oct2019)

14.3.0-rc.0 (Ref)
4.0x5.0



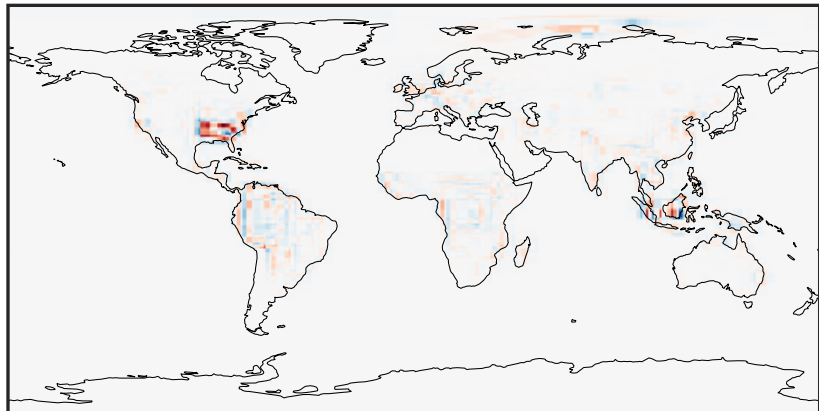
0.000 1.383 2.767 4.150 5.534
ppb

14.3.0-rc.0 (Dev)
c24



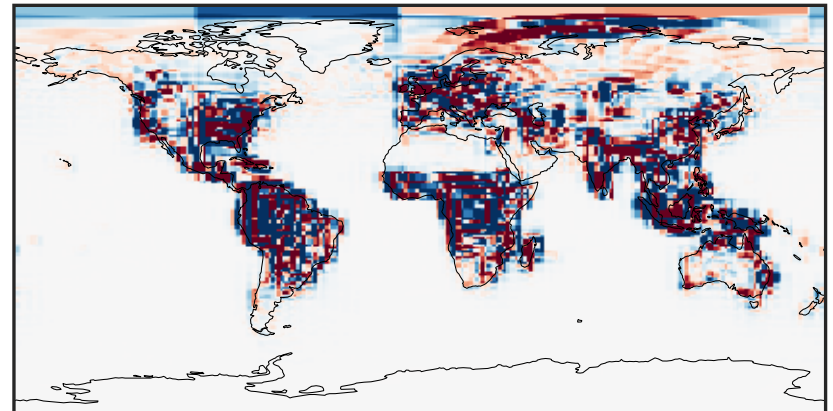
0.000 1.383 2.767 4.150 5.534
ppb

Difference (1x1.25)
Dev - Ref, Dynamic Range



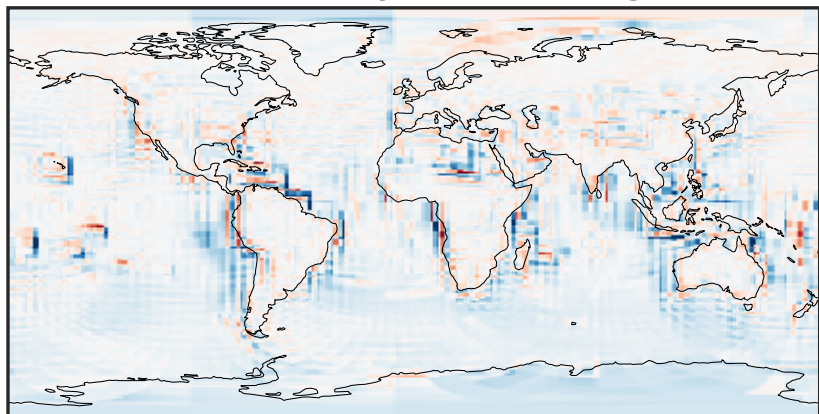
-2.684 -1.342 0.000 1.342 2.684
ppb

Difference (1x1.25)
Dev - Ref, Restricted Range [5%,95%]



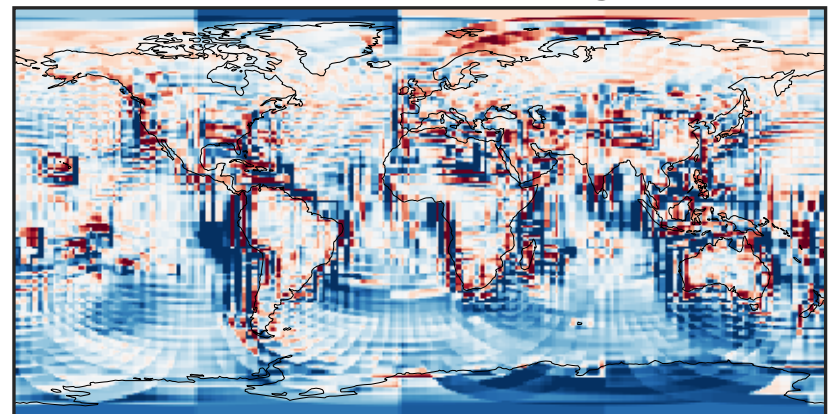
-0.0811 -0.0405 0.0000 0.0405 0.0811
ppb

Ratio (1x1.25)
Dev/Ref, Dynamic Range



1e-01 1 10
unitless

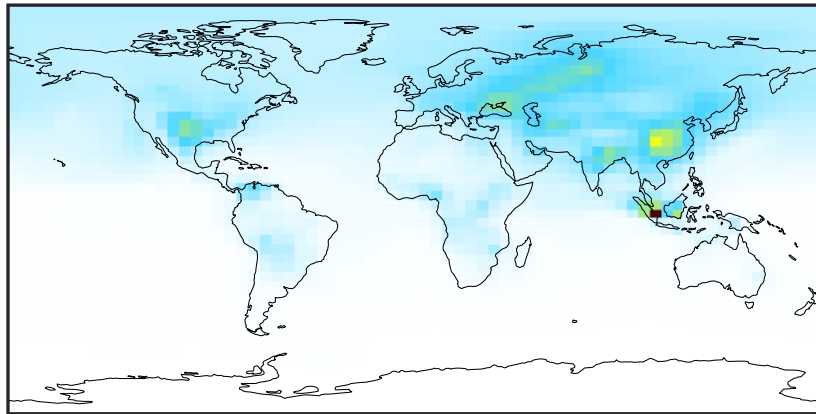
Ratio (1x1.25)
Dev/Ref, Fixed Range



0.50 0.75 1.00 1.50 2.00
unitless

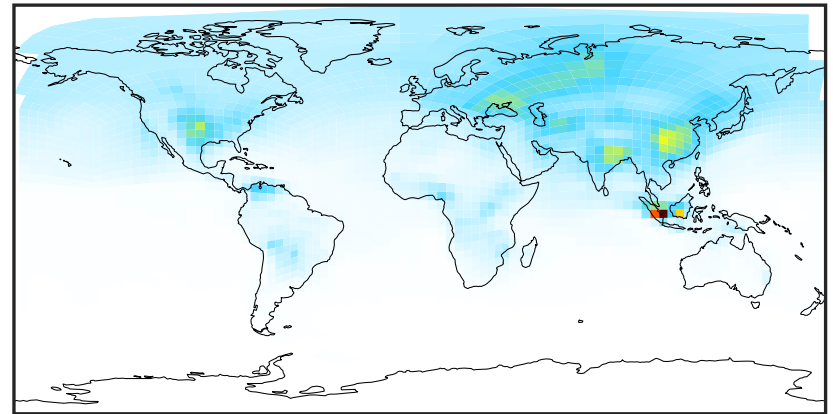
SpeciesConcVV_C2H6 (Oct2019)

14.3.0-rc.0 (Ref)
4.0x5.0



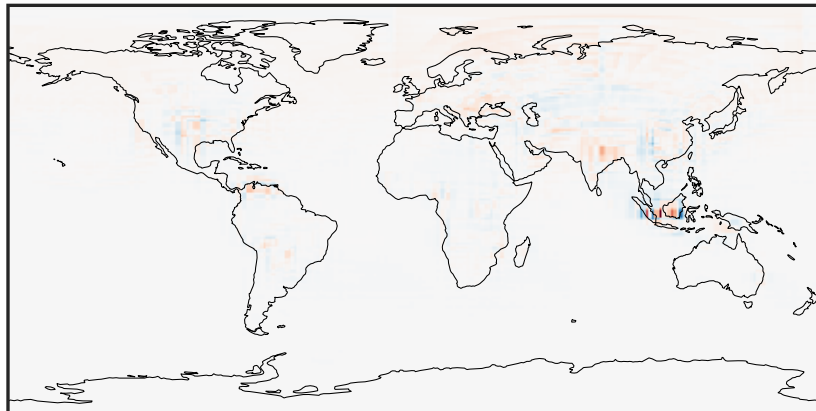
0.077 2.228 4.378 6.528 8.679
ppb

14.3.0-rc.0 (Dev)
c24



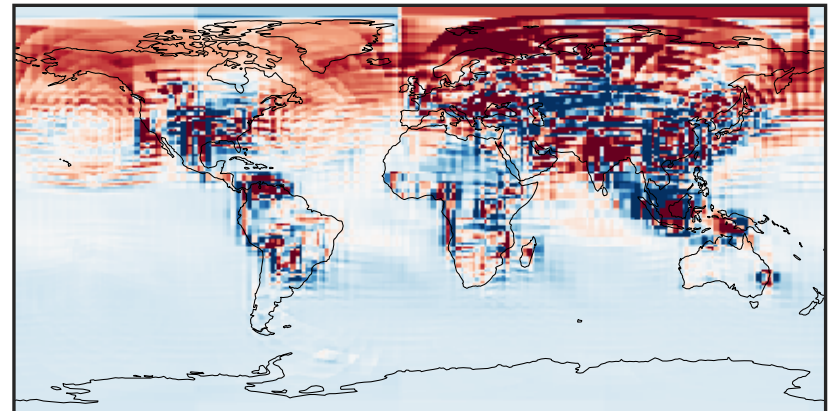
0.077 2.228 4.378 6.528 8.679
ppb

Difference (1x1.25)
Dev - Ref, Dynamic Range



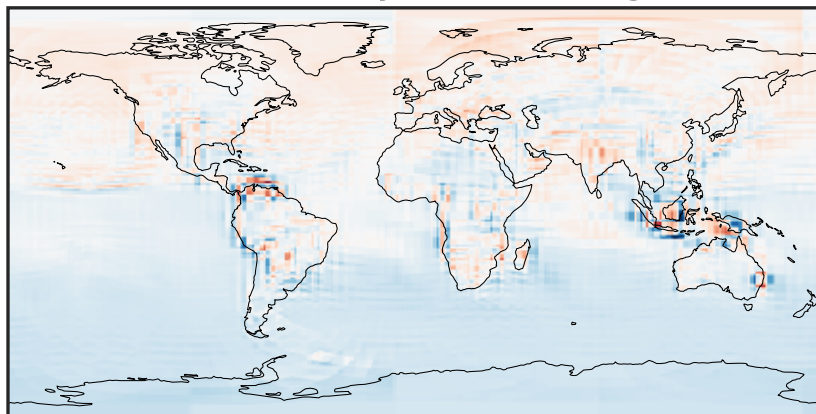
-3.432 -1.716 0.000 1.716 3.432
ppb

Difference (1x1.25)
Dev - Ref, Restricted Range [5%,95%]



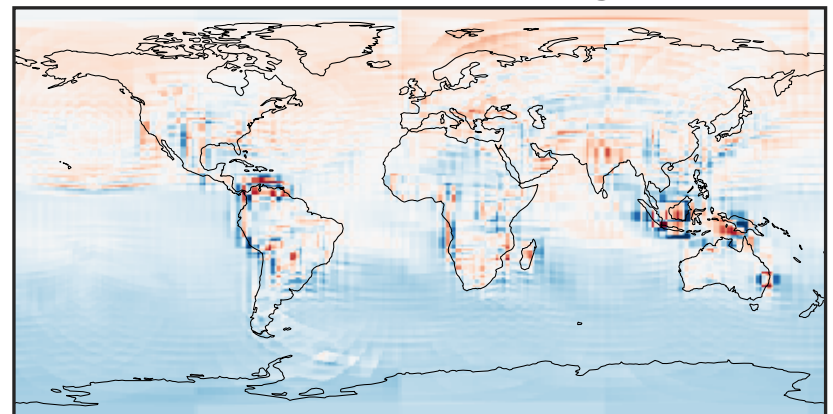
-0.1237 -0.0619 0.0000 0.0619 0.1237
ppb

Ratio (1x1.25)
Dev/Ref, Dynamic Range



0.367 0.683 1.000 1.863 2.727
unitless

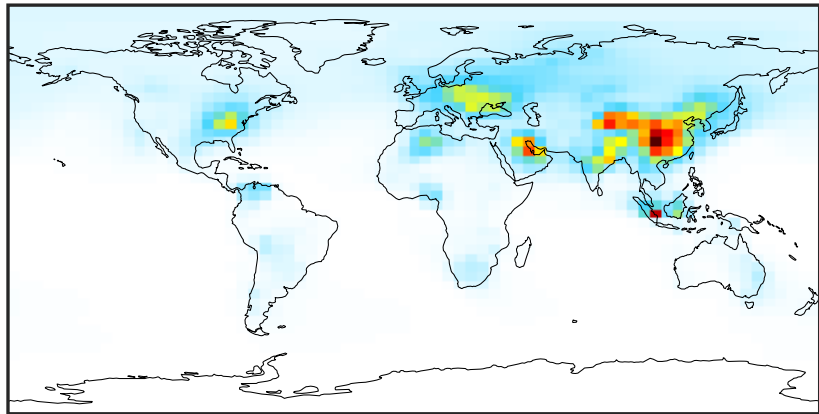
Ratio (1x1.25)
Dev/Ref, Fixed Range



0.50 0.75 1.00 1.50 2.00
unitless

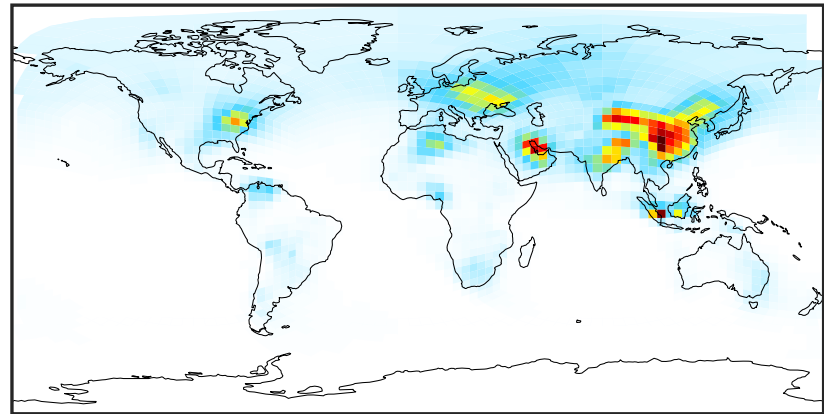
SpeciesConcVV_C3H8 (Oct2019)

14.3.0-rc.0 (Ref)
4.0x5.0



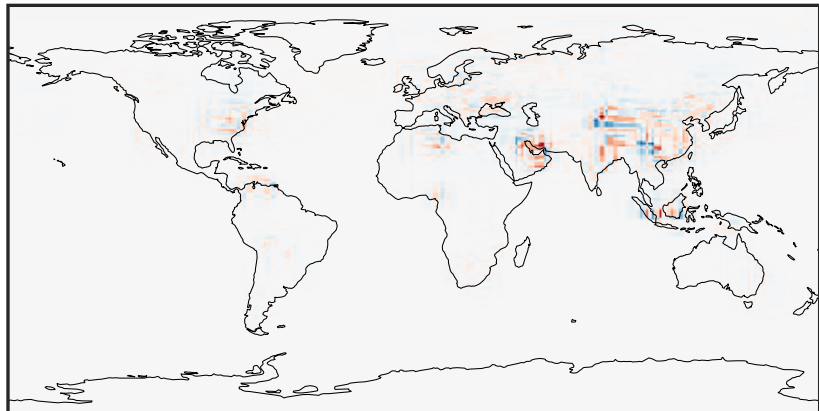
0.000 0.883 1.765 2.648 3.530
ppb

14.3.0-rc.0 (Dev)
c24



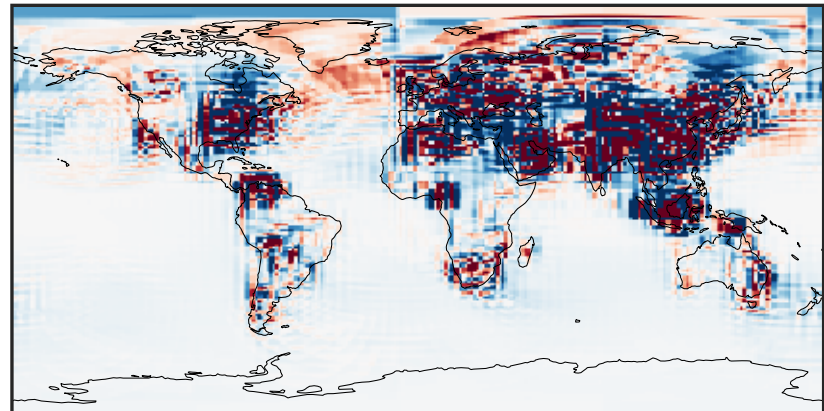
0.000 0.883 1.765 2.648 3.530
ppb

Difference (1x1.25)
Dev - Ref, Dynamic Range



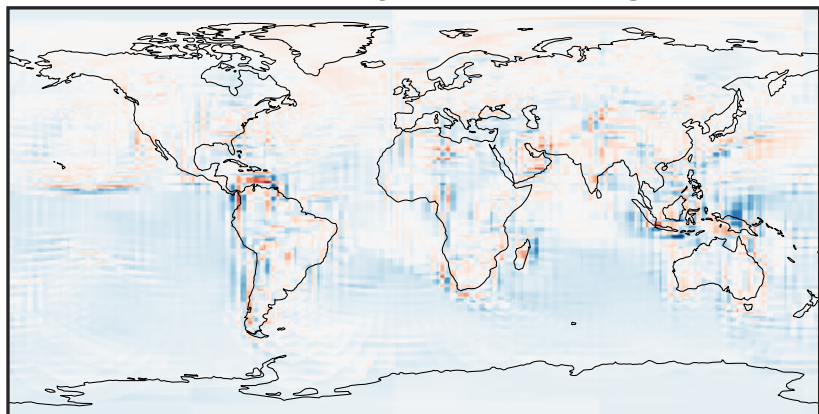
-1.481 -0.741 0.000 0.741 1.481
ppb

Difference (1x1.25)
Dev - Ref, Restricted Range [5%,95%]



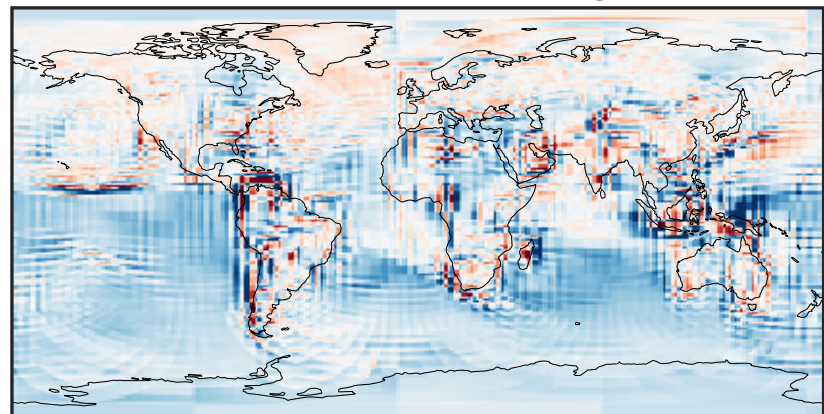
-0.025 0.000 0.025
ppb

Ratio (1x1.25)
Dev/Ref, Dynamic Range



0.169 0.584 1.000 3.460 5.919
unitless

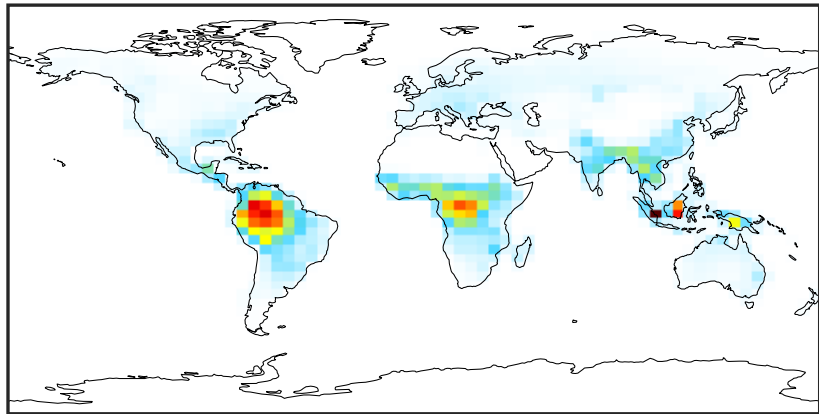
Ratio (1x1.25)
Dev/Ref, Fixed Range



0.50 0.75 1.00 1.50 2.00
unitless

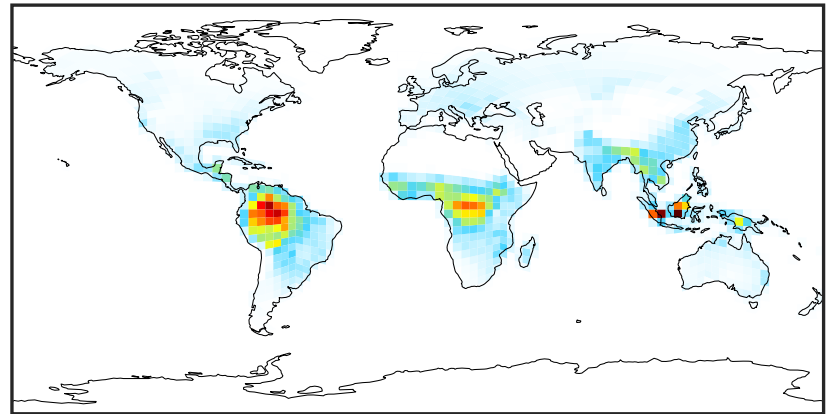
SpeciesConcVV_PRPE (Oct2019)

14.3.0-rc.0 (Ref)
4.0x5.0



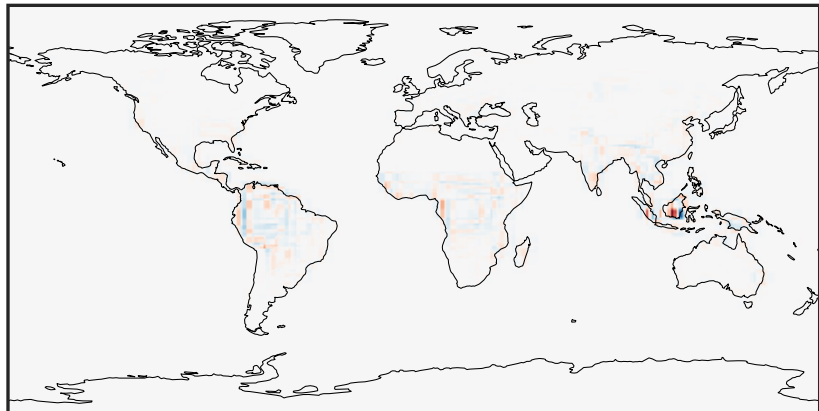
0.000 0.663 1.326 1.989 2.653
ppb

14.3.0-rc.0 (Dev)
c24



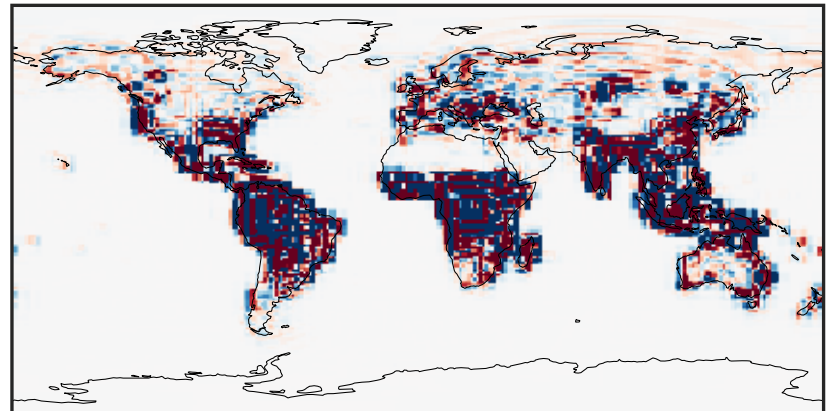
0.000 0.663 1.326 1.989 2.653
ppb

Difference (1x1.25)
Dev - Ref, Dynamic Range



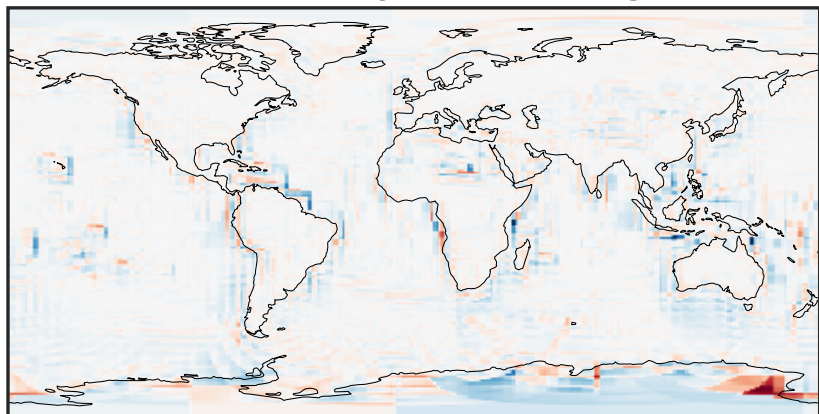
-2.019 -1.009 0.000 1.009 2.019
ppb

Difference (1x1.25)
Dev - Ref, Restricted Range [5%,95%]



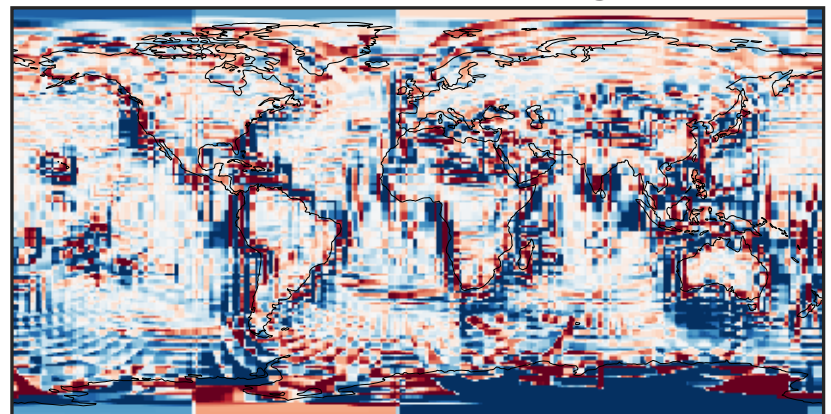
-0.015 0.000 0.015
ppb

Ratio (1x1.25)
Dev/Ref, Dynamic Range



1e-03 1e-02 1e-01 1 10 100 1000
unitless

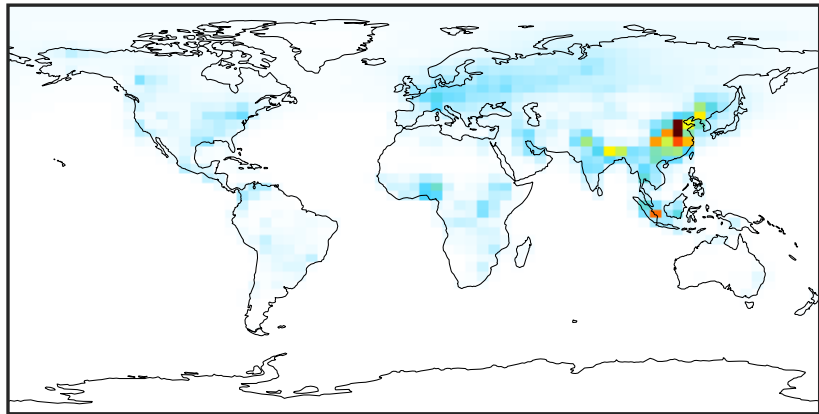
Ratio (1x1.25)
Dev/Ref, Fixed Range



0.50 0.75 1.00 1.50 2.00
unitless

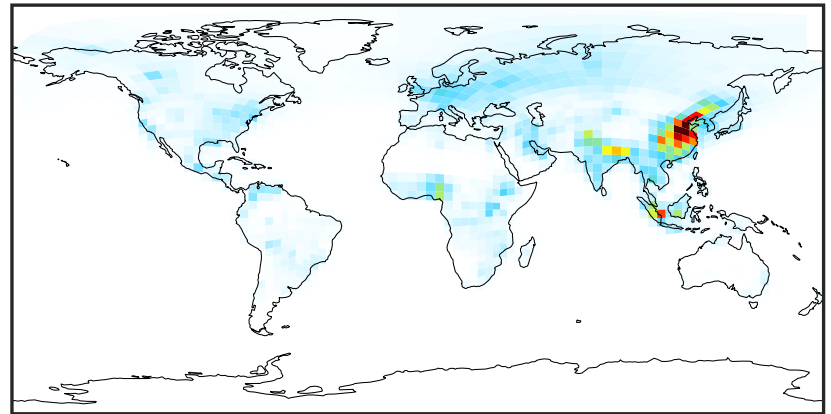
SpeciesConcVV_TOLU (Oct2019)

14.3.0-rc.0 (Ref)
4.0x5.0



0.0000 0.2164 0.4329 0.6493 0.8657
ppb

14.3.0-rc.0 (Dev)
c24



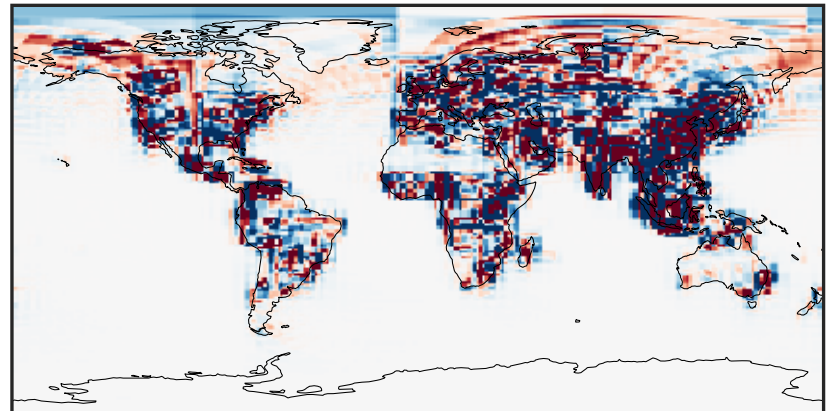
0.0000 0.2164 0.4329 0.6493 0.8657
ppb

Difference (1x1.25)
Dev - Ref, Dynamic Range



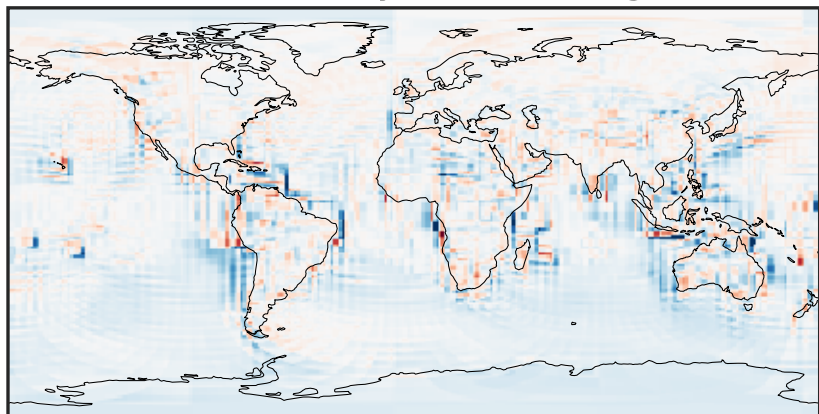
-0.4452 -0.2226 0.0000 0.2226 0.4452
ppb

Difference (1x1.25)
Dev - Ref, Restricted Range [5%,95%]



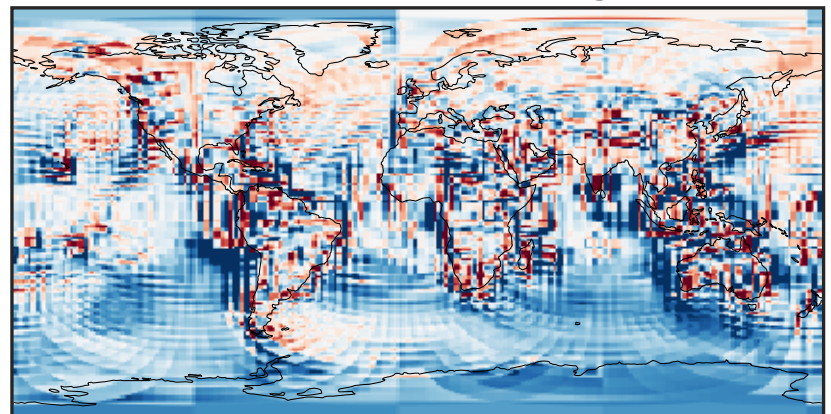
-0.005 0.000 0.005
ppb

Ratio (1x1.25)
Dev/Ref, Dynamic Range



1e-01 1 10
unitless

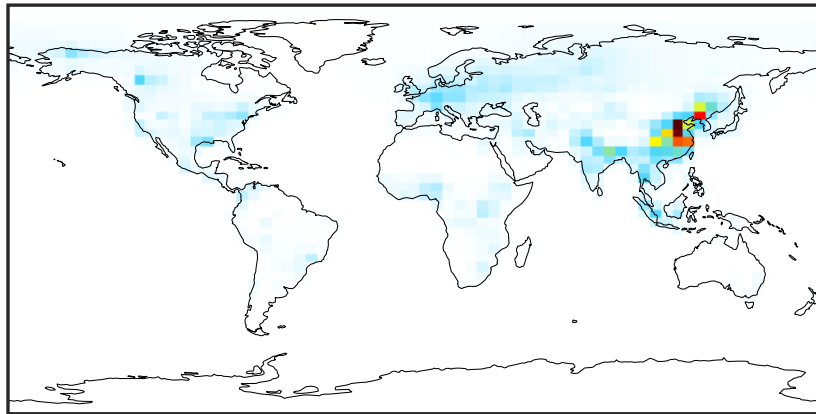
Ratio (1x1.25)
Dev/Ref, Fixed Range



0.50 0.75 1.00 1.50 2.00
unitless

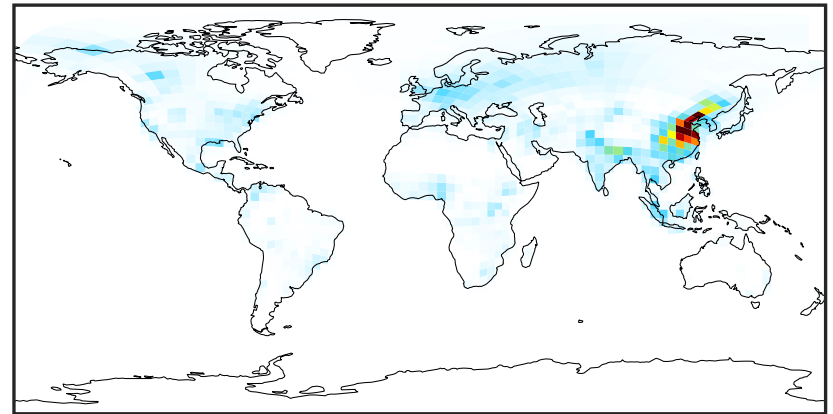
SpeciesConcVV_XYLE (Oct2019)

14.3.0-rc.0 (Ref)
4.0x5.0



0.0000 0.1816 0.3631 0.5447 0.7263
ppb

14.3.0-rc.0 (Dev)
c24



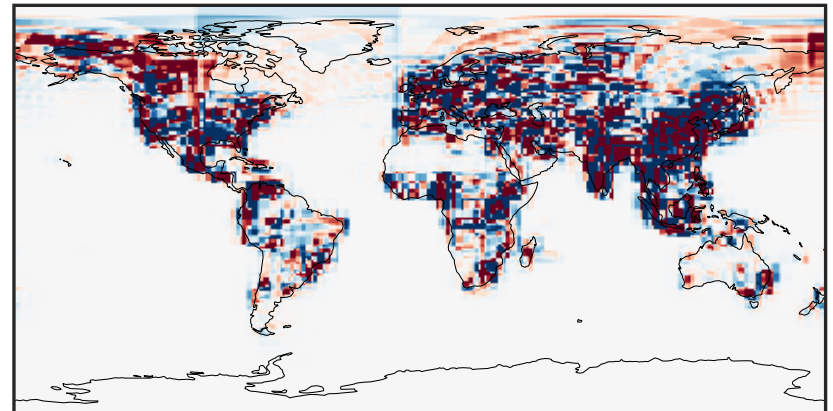
0.0000 0.1816 0.3631 0.5447 0.7263
ppb

Difference (1x1.25)
Dev - Ref, Dynamic Range



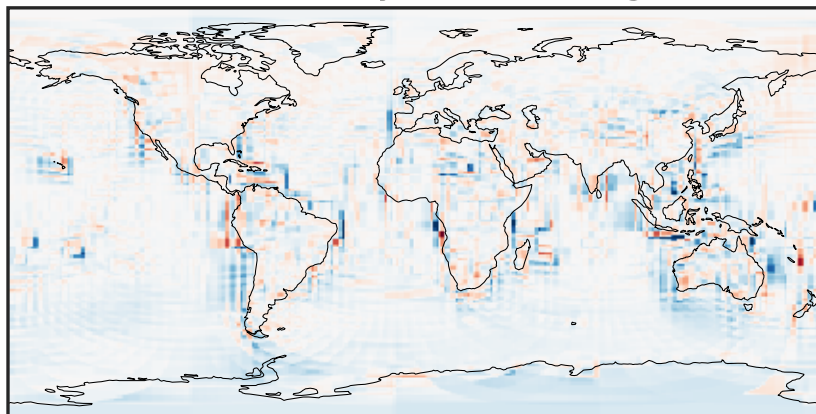
-0.626 -0.313 0.000 0.313 0.626
ppb

Difference (1x1.25)
Dev - Ref, Restricted Range [5%,95%]



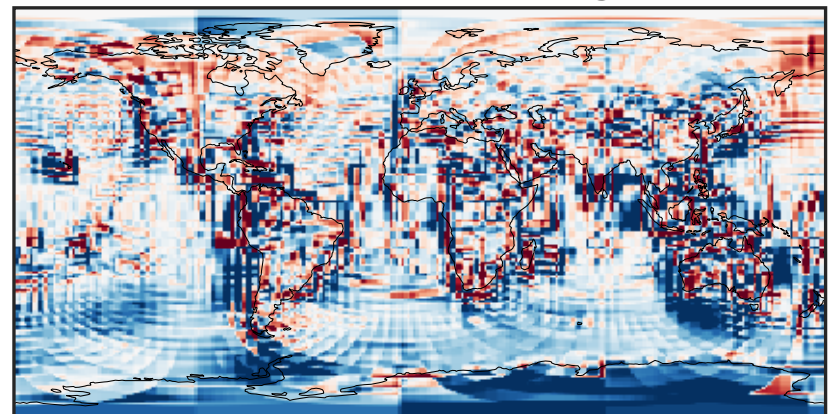
-0.003 0.000 0.003
ppb

Ratio (1x1.25)
Dev/Ref, Dynamic Range



1e-01 1 10
unitless

Ratio (1x1.25)
Dev/Ref, Fixed Range



0.50 0.75 1.00 1.50 2.00
unitless