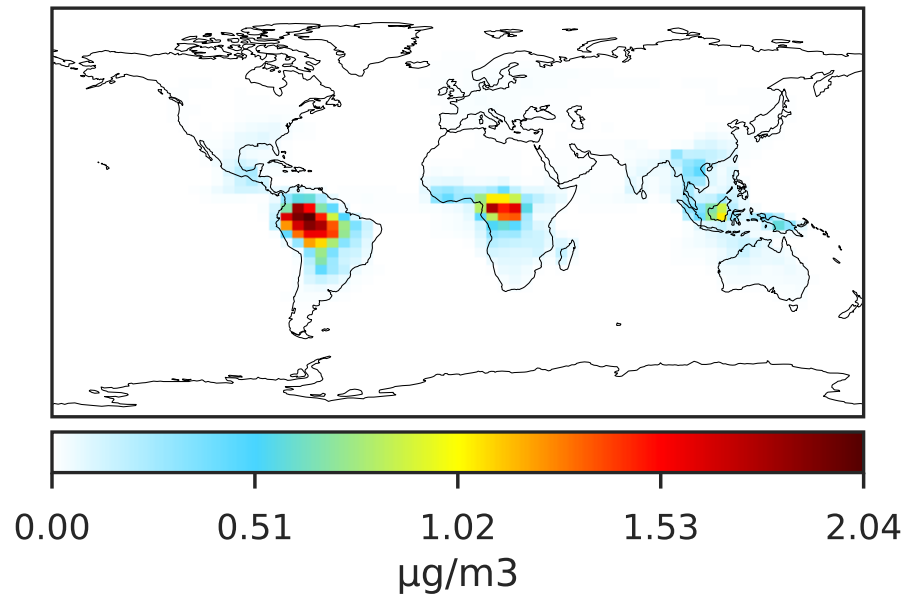
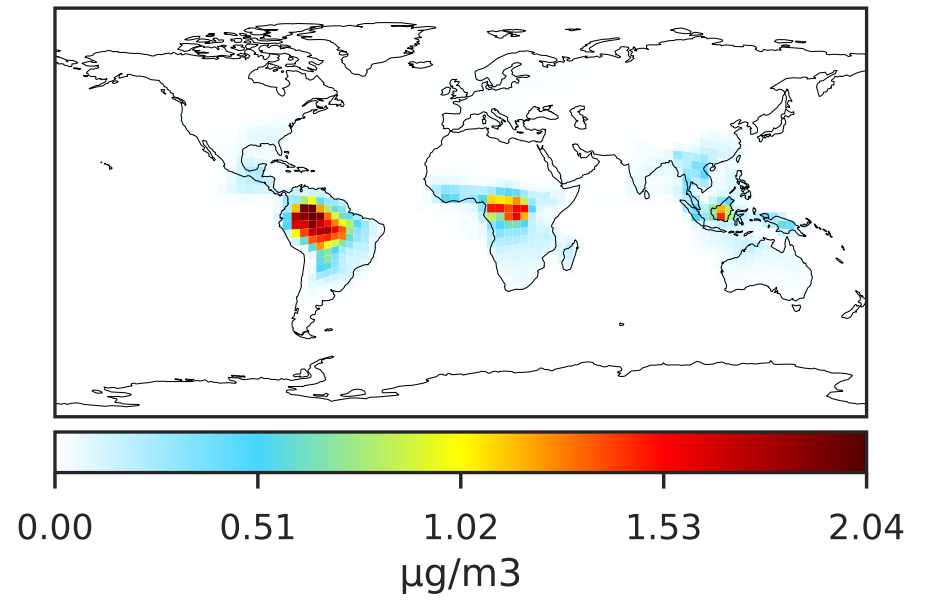


# SpeciesConcVV\_TSOA0 (Apr2019)

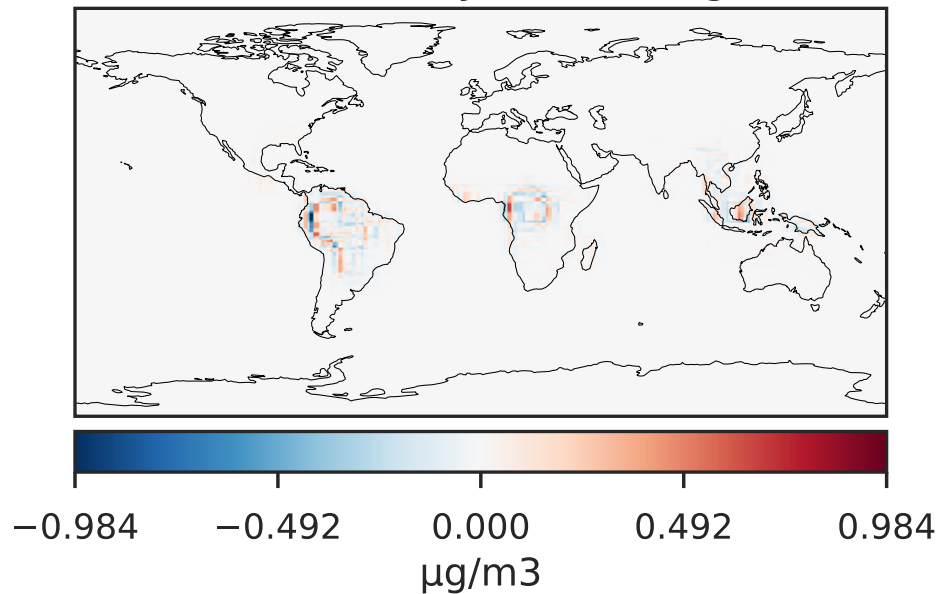
14.3.0-rc.0 (Ref)  
4.0x5.0



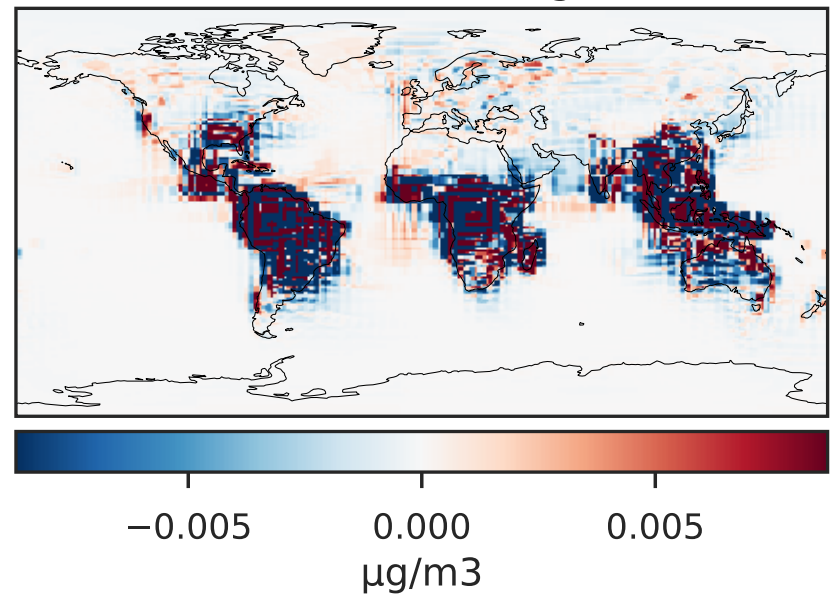
14.3.0-rc.0 (Dev)  
c24



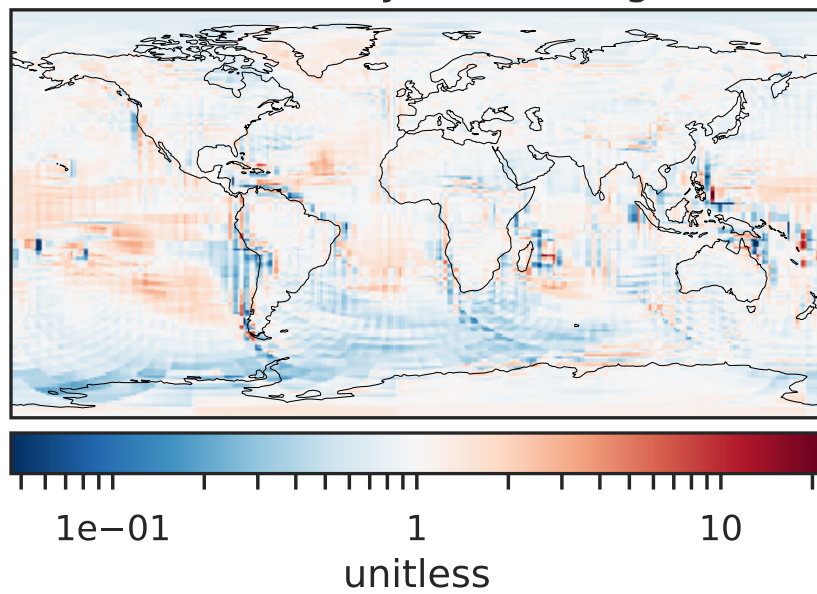
Difference (1x1.25)  
Dev - Ref, Dynamic Range



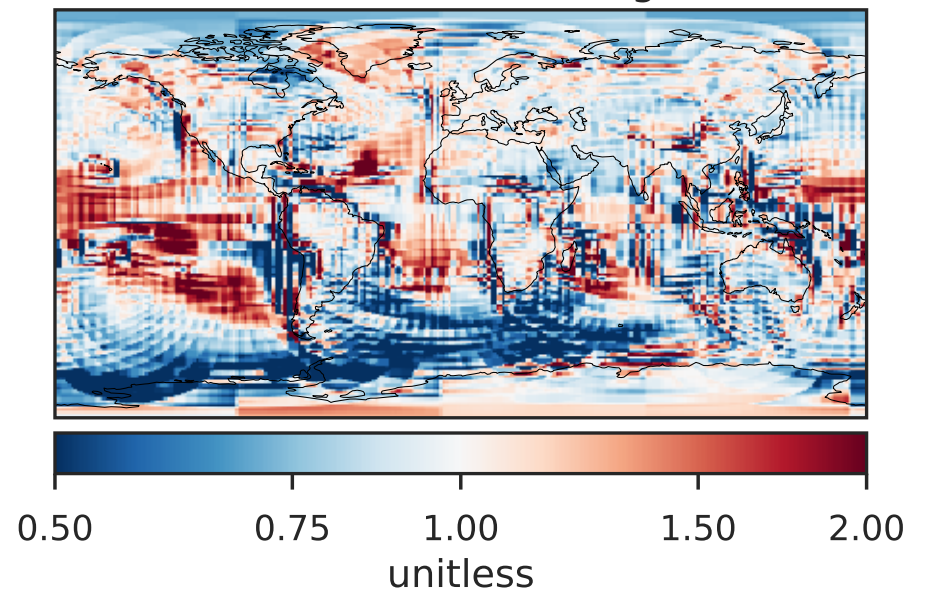
Difference (1x1.25)  
Dev - Ref, Restricted Range [5%,95%]



Ratio (1x1.25)  
Dev/Ref, Dynamic Range

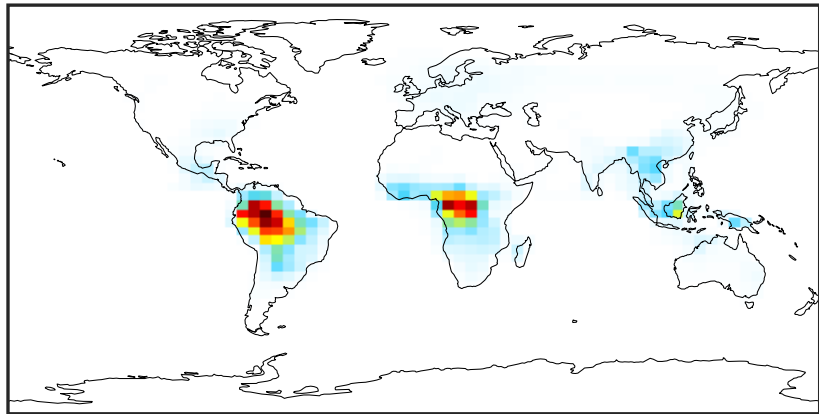


Ratio (1x1.25)  
Dev/Ref, Fixed Range



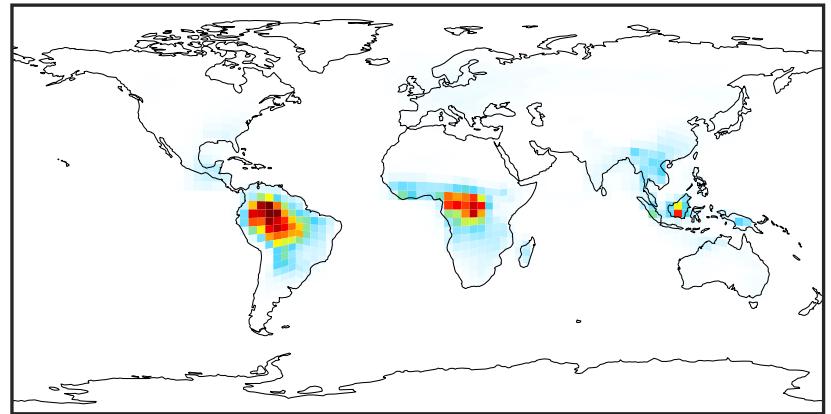
# SpeciesConcVV\_TSOA1 (Apr2019)

14.3.0-rc.0 (Ref)  
4.0x5.0



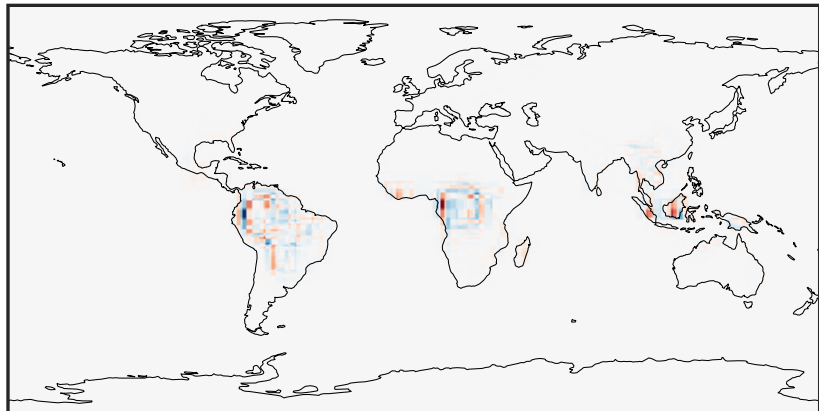
0.0000 0.1998 0.3997 0.5995 0.7994  
 $\mu\text{g}/\text{m}^3$

14.3.0-rc.0 (Dev)  
c24



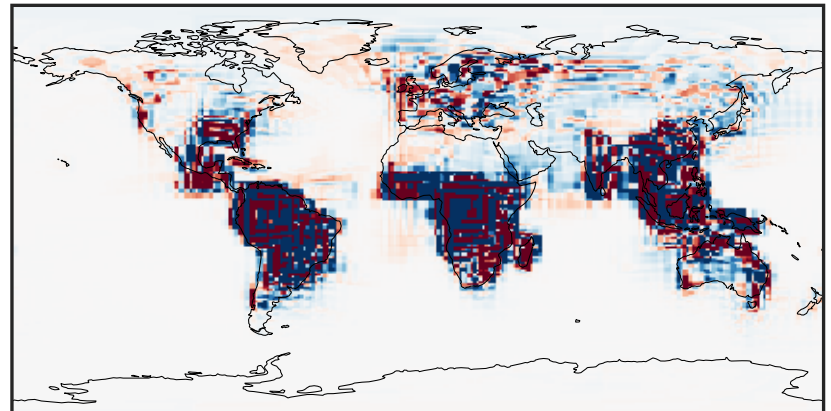
0.0000 0.1998 0.3997 0.5995 0.7994  
 $\mu\text{g}/\text{m}^3$

Difference (1x1.25)  
Dev - Ref, Dynamic Range



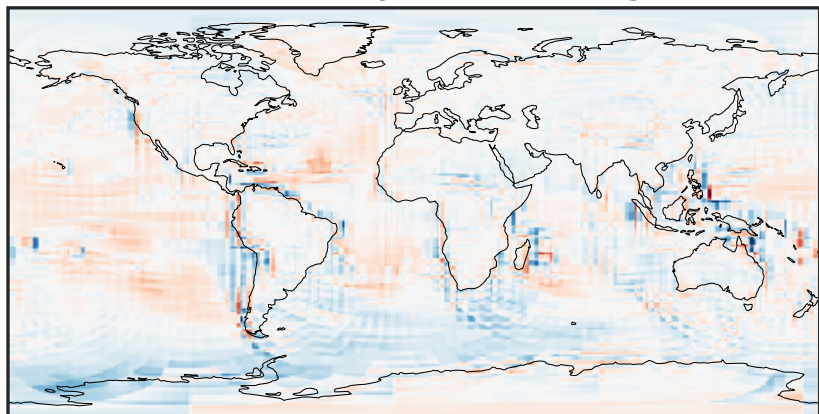
-0.3730 -0.1865 0.0000 0.1865 0.3730  
 $\mu\text{g}/\text{m}^3$

Difference (1x1.25)  
Dev - Ref, Restricted Range [5%,95%]



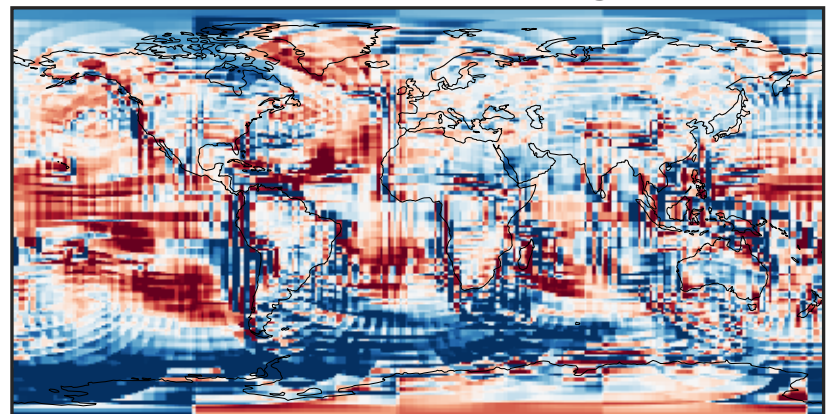
-0.0015 0.0000 0.0015  
 $\mu\text{g}/\text{m}^3$

Ratio (1x1.25)  
Dev/Ref, Dynamic Range



1e-01 1 10  
unitless

Ratio (1x1.25)  
Dev/Ref, Fixed Range

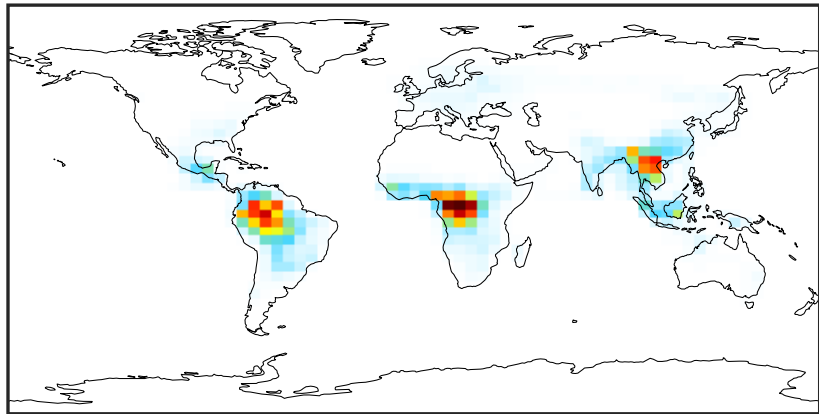


0.50 0.75 1.00 1.50 2.00  
unitless



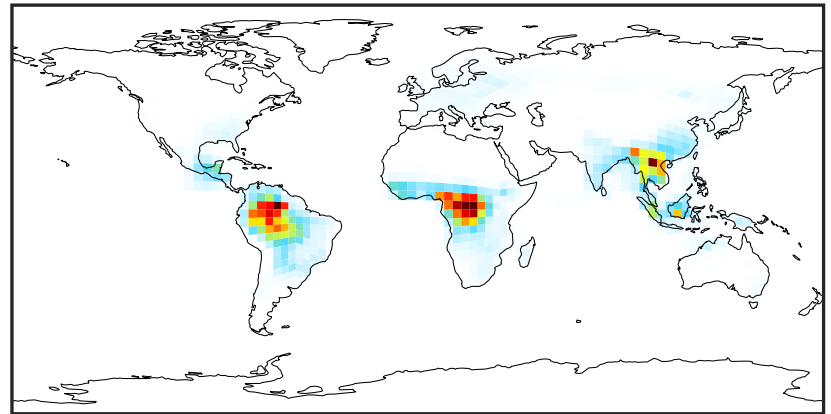
# SpeciesConcVV\_TSOA2 (Apr2019)

14.3.0-rc.0 (Ref)  
4.0x5.0



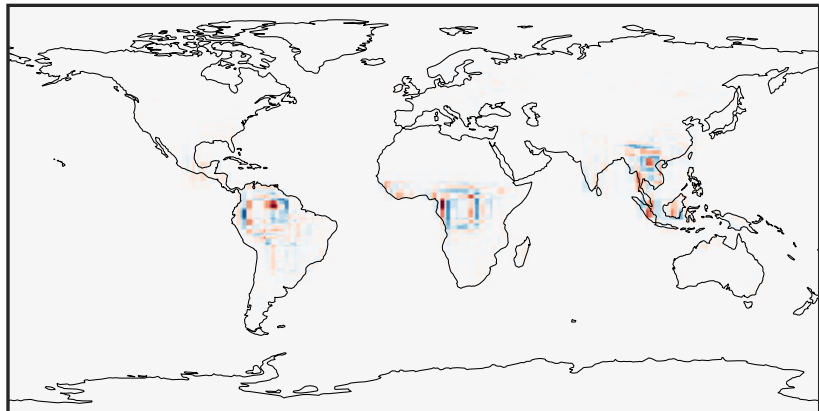
0.000 0.693 1.386 2.080 2.773  
µg/m<sup>3</sup>

14.3.0-rc.0 (Dev)  
c24



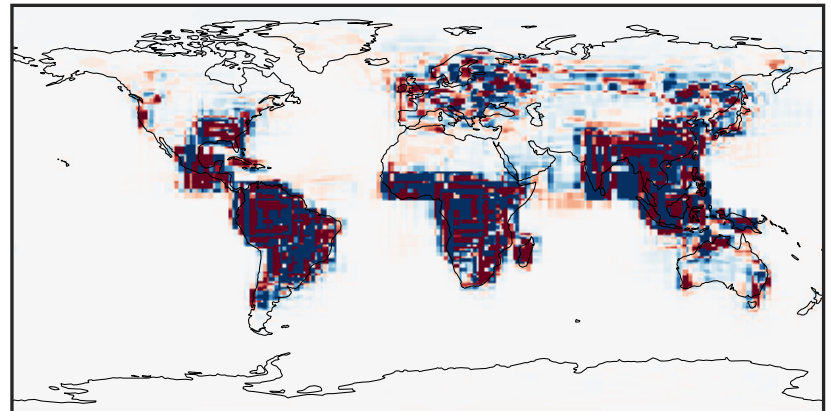
0.000 0.693 1.386 2.080 2.773  
µg/m<sup>3</sup>

Difference (1x1.25)  
Dev - Ref, Dynamic Range



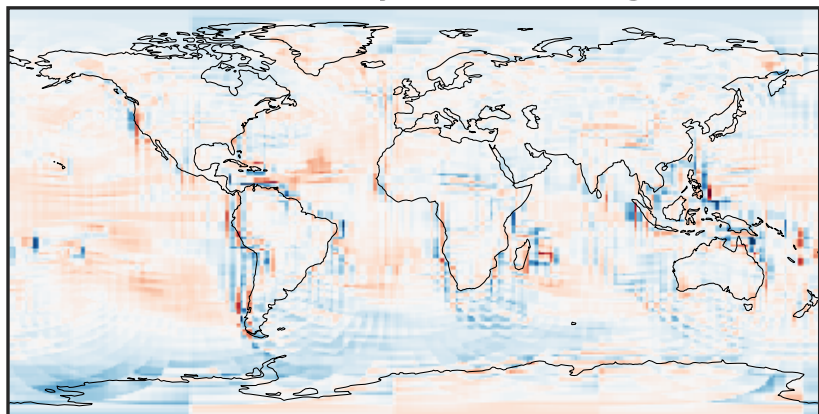
-1.243 -0.621 0.000 0.621 1.243  
µg/m<sup>3</sup>

Difference (1x1.25)  
Dev - Ref, Restricted Range [5%,95%]



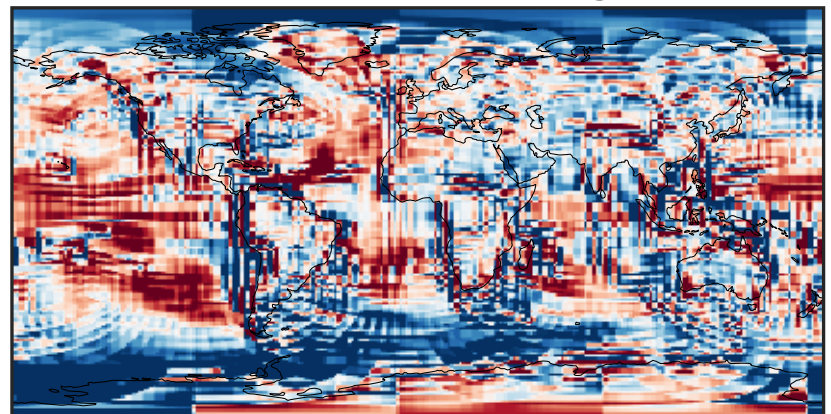
-0.005 0.000 0.005  
µg/m<sup>3</sup>

Ratio (1x1.25)  
Dev/Ref, Dynamic Range



1e-01 1 10  
unitless

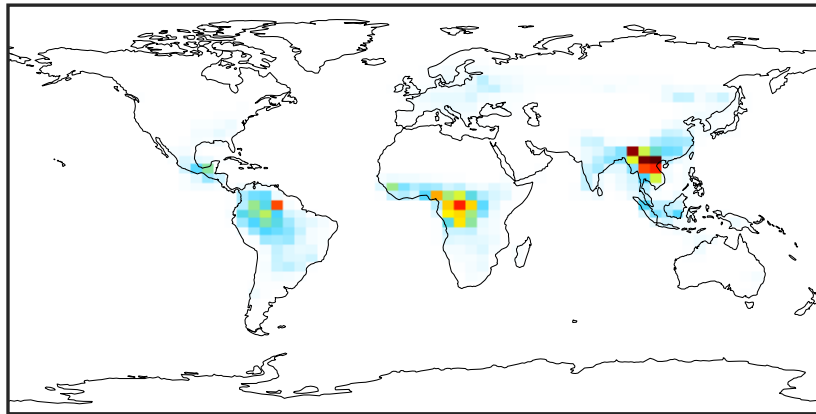
Ratio (1x1.25)  
Dev/Ref, Fixed Range



0.50 0.75 1.00 1.50 2.00  
unitless

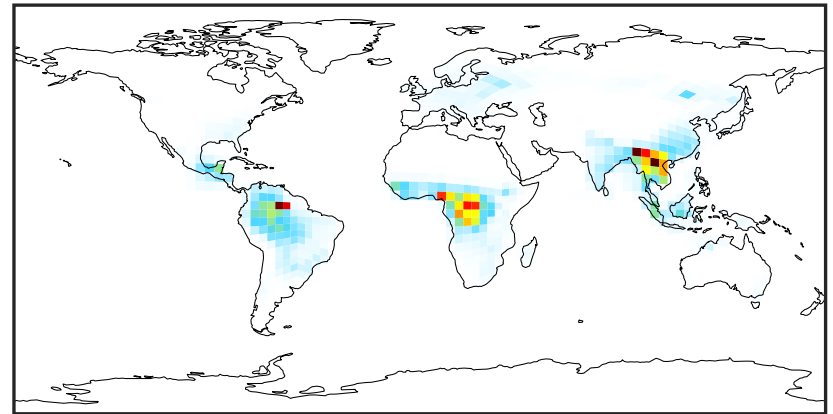
# SpeciesConcVV\_TSOA3 (Apr2019)

14.3.0-rc.0 (Ref)  
4.0x5.0



0.000 0.269 0.539 0.808 1.078  
µg/m<sup>3</sup>

14.3.0-rc.0 (Dev)  
c24



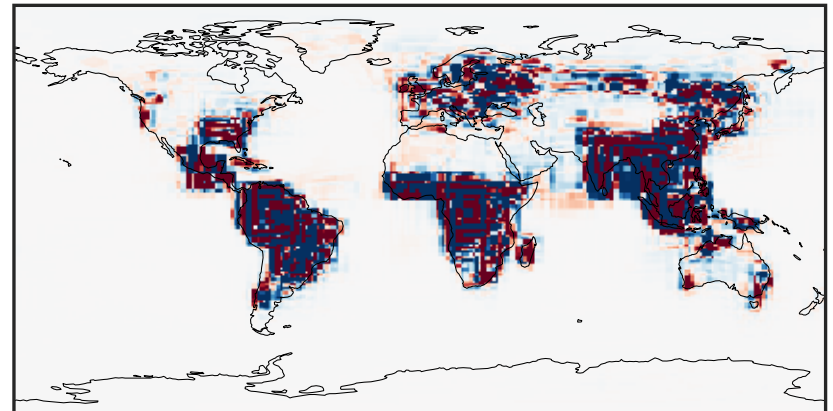
0.000 0.269 0.539 0.808 1.078  
µg/m<sup>3</sup>

Difference (1x1.25)  
Dev - Ref, Dynamic Range



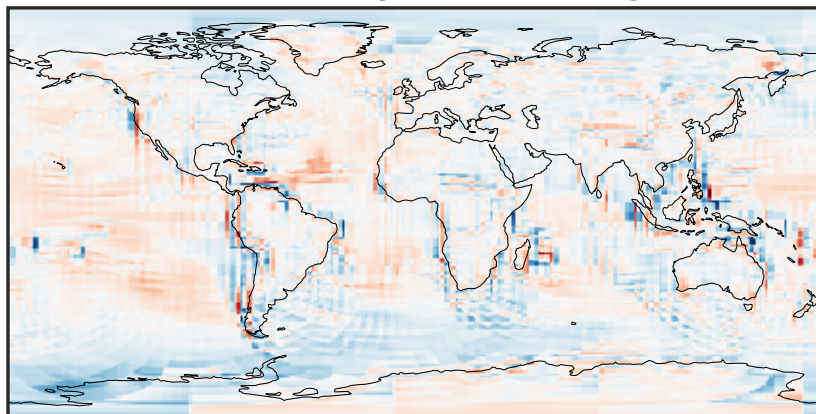
-0.897 -0.448 0.000 0.448 0.897  
µg/m<sup>3</sup>

Difference (1x1.25)  
Dev - Ref, Restricted Range [5%,95%]



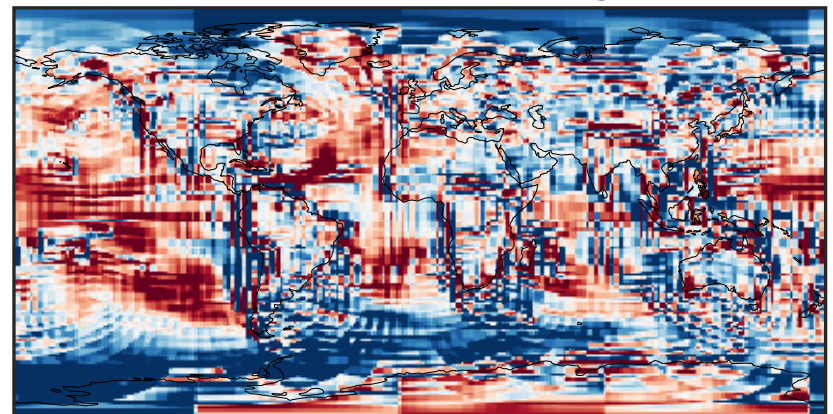
-0.002 0.000 0.002  
µg/m<sup>3</sup>

Ratio (1x1.25)  
Dev/Ref, Dynamic Range



1e-01 1 10  
unitless

Ratio (1x1.25)  
Dev/Ref, Fixed Range

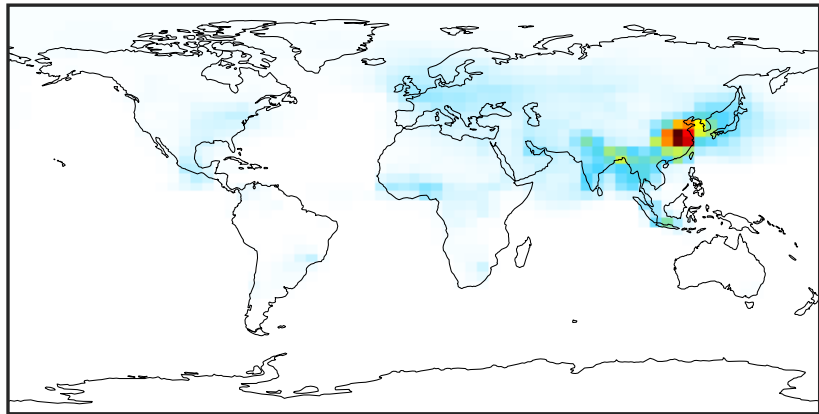


0.50 0.75 1.00 1.50 2.00  
unitless



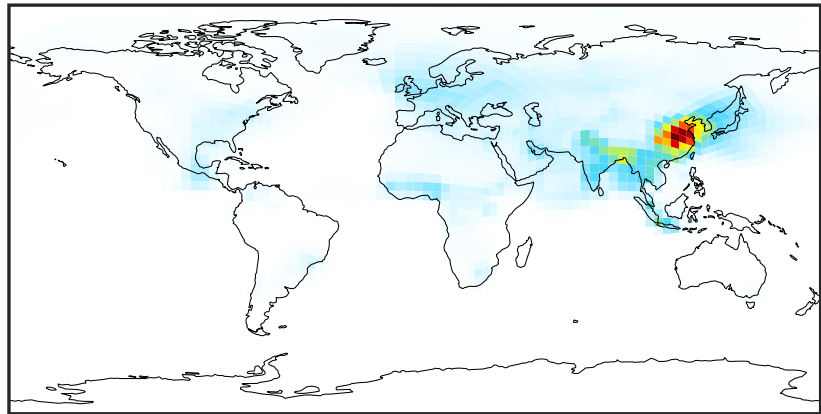
# SpeciesConcVV\_ASOA1 (Apr2019)

14.3.0-rc.0 (Ref)  
4.0x5.0



0.0000 0.0371 0.0743 0.1114 0.1485  
µg/m<sup>3</sup>

14.3.0-rc.0 (Dev)  
c24



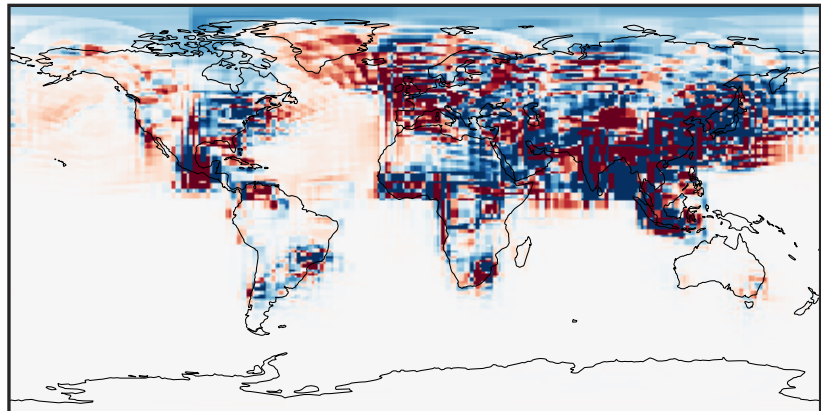
0.0000 0.0371 0.0743 0.1114 0.1485  
µg/m<sup>3</sup>

Difference (1x1.25)  
Dev - Ref, Dynamic Range



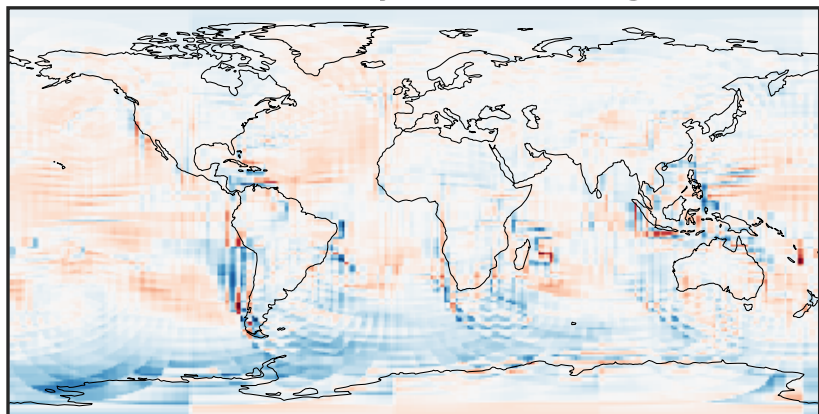
-0.0645 -0.0322 0.0000 0.0322 0.0645  
µg/m<sup>3</sup>

Difference (1x1.25)  
Dev - Ref, Restricted Range [5%,95%]



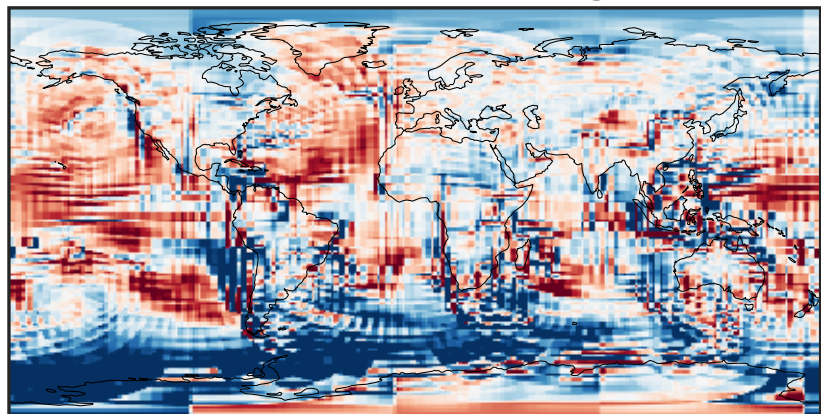
-0.0006 0.0000 0.0006  
µg/m<sup>3</sup>

Ratio (1x1.25)  
Dev/Ref, Dynamic Range



1e-01 1 10  
unitless

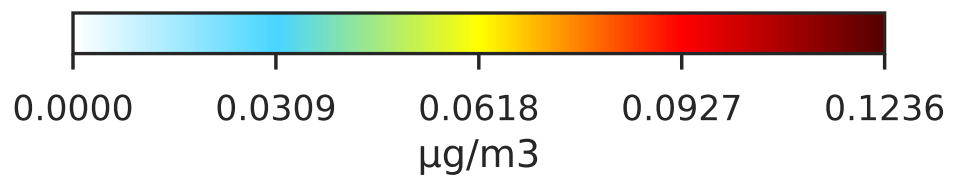
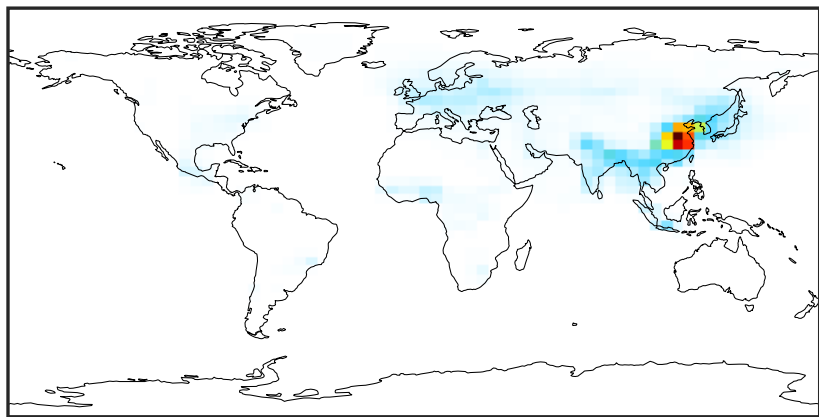
Ratio (1x1.25)  
Dev/Ref, Fixed Range



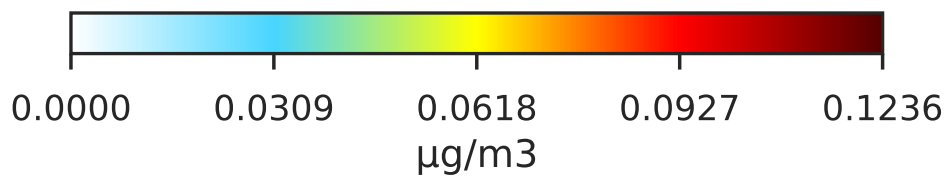
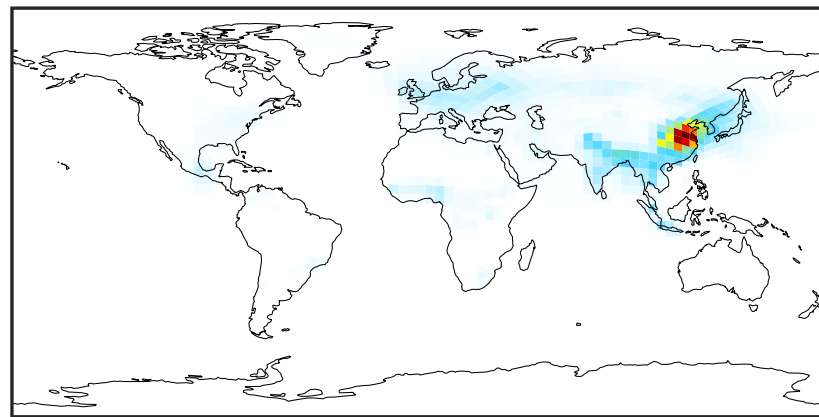
0.50 0.75 1.00 1.50 2.00  
unitless

# SpeciesConcVV\_ASOA2 (Apr2019)

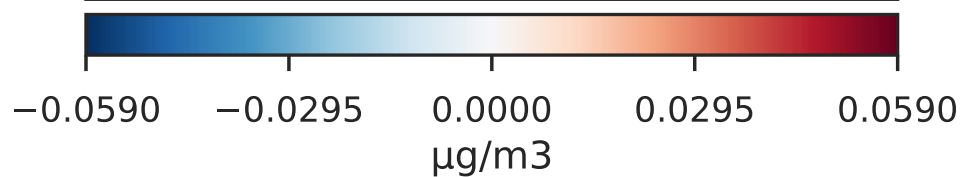
14.3.0-rc.0 (Ref)  
4.0x5.0



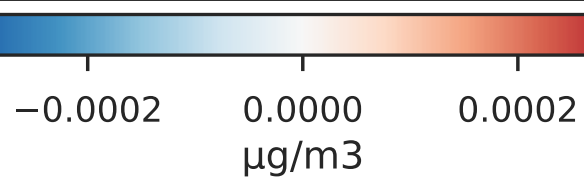
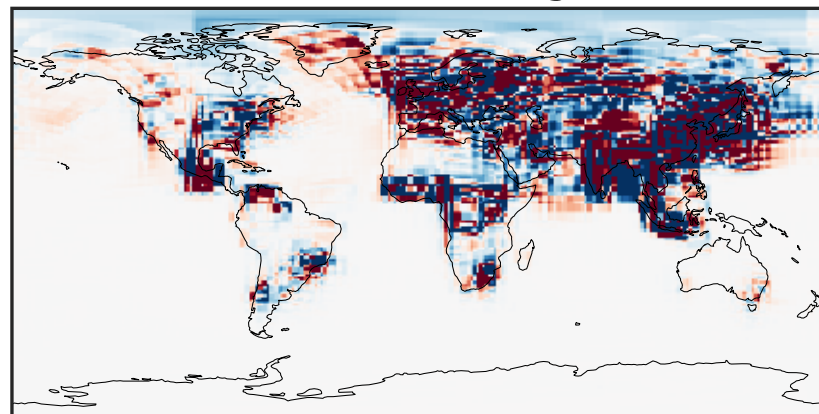
14.3.0-rc.0 (Dev)  
c24



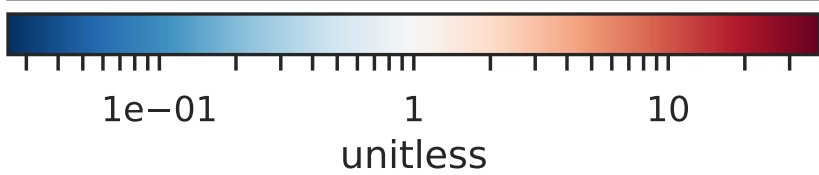
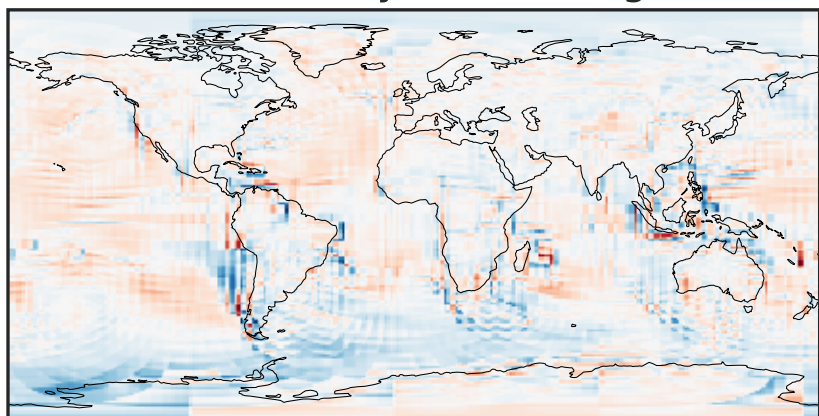
Difference (1x1.25)  
Dev - Ref, Dynamic Range



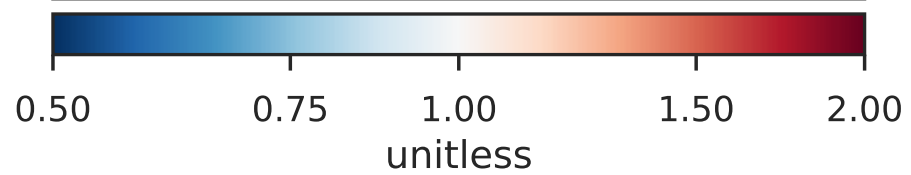
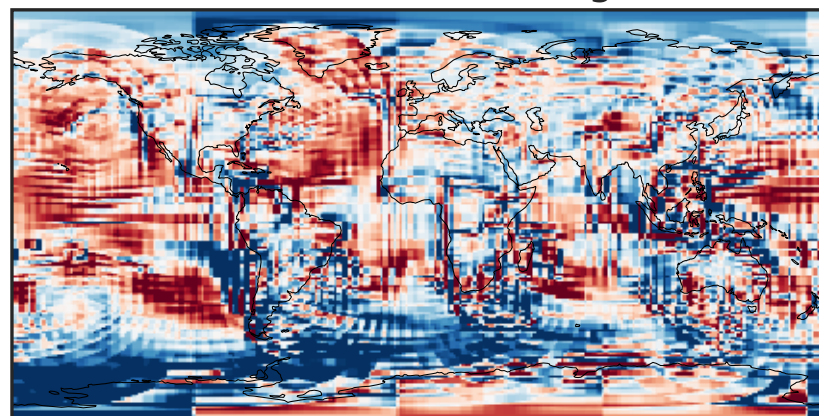
Difference (1x1.25)  
Dev - Ref, Restricted Range [5%,95%]



Ratio (1x1.25)  
Dev/Ref, Dynamic Range



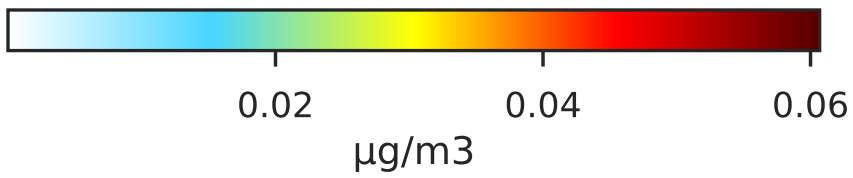
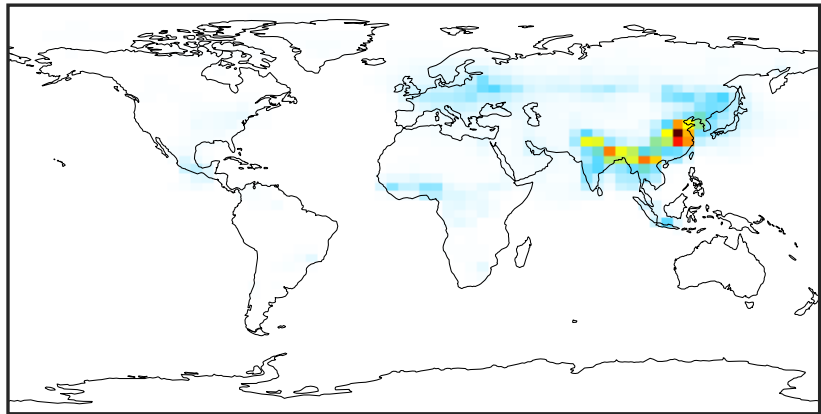
Ratio (1x1.25)  
Dev/Ref, Fixed Range



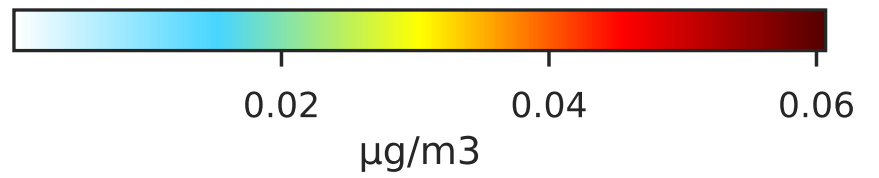
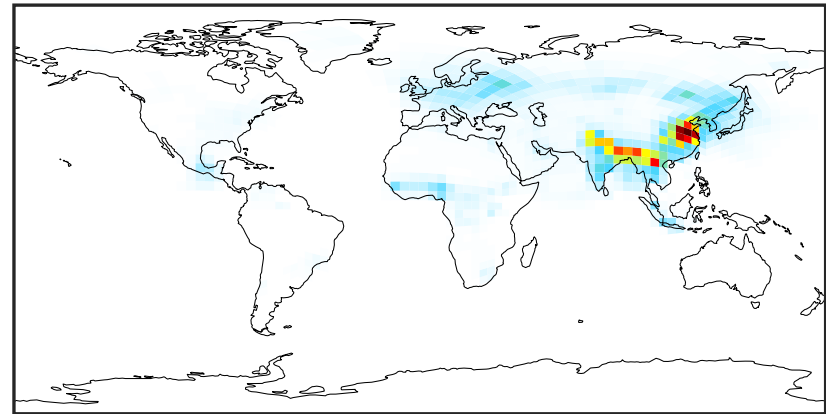


# SpeciesConcVV\_ASOA3 (Apr2019)

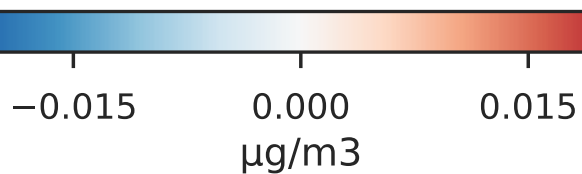
14.3.0-rc.0 (Ref)  
4.0x5.0



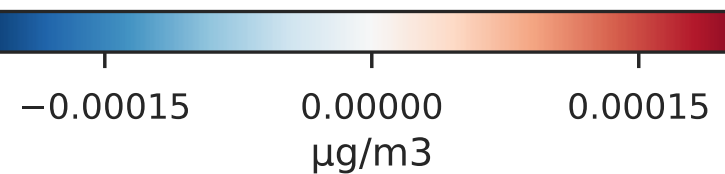
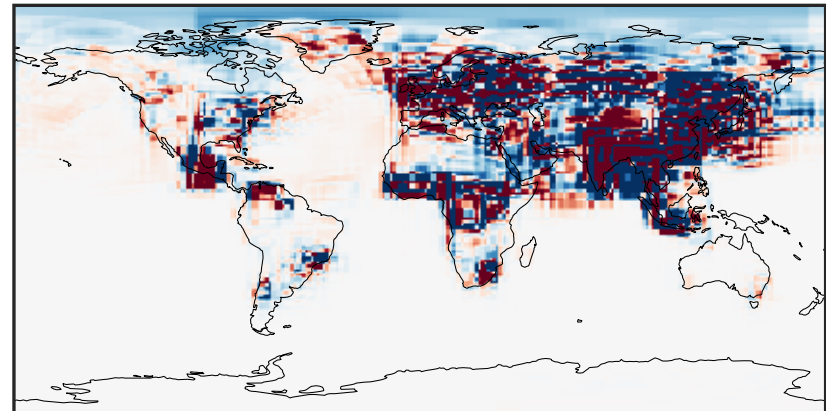
14.3.0-rc.0 (Dev)  
c24



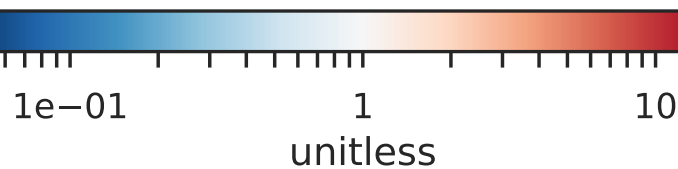
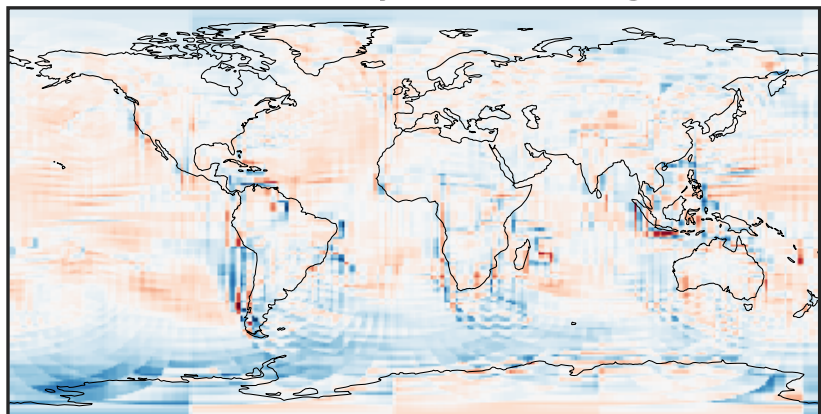
Difference (1x1.25)  
Dev - Ref, Dynamic Range



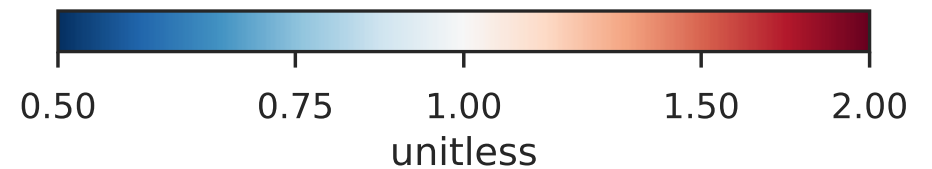
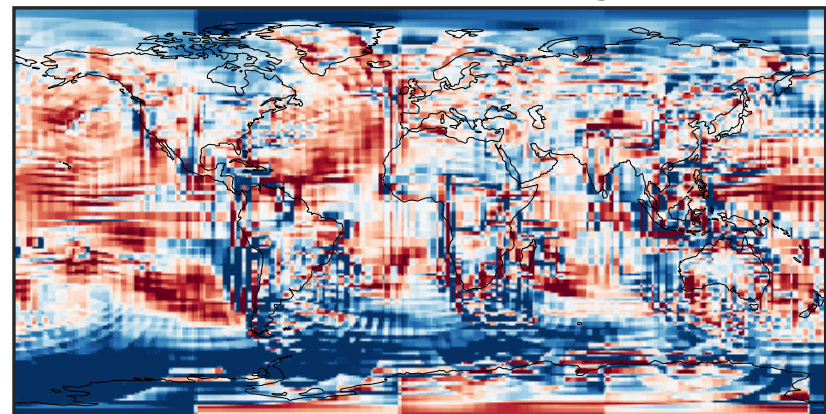
Difference (1x1.25)  
Dev - Ref, Restricted Range [5%,95%]



Ratio (1x1.25)  
Dev/Ref, Dynamic Range

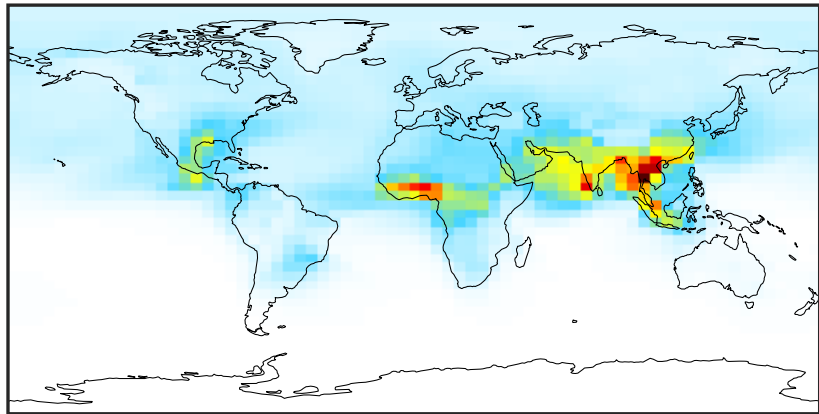


Ratio (1x1.25)  
Dev/Ref, Fixed Range



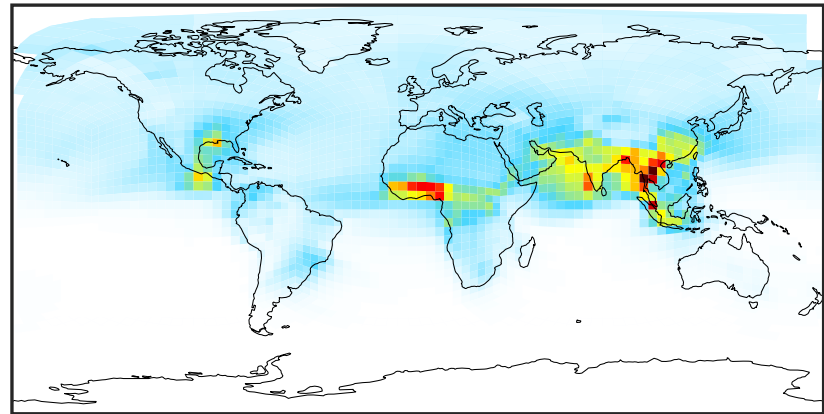
# SpeciesConcVV\_ASOAN (Apr2019)

14.3.0-rc.0 (Ref)  
4.0x5.0



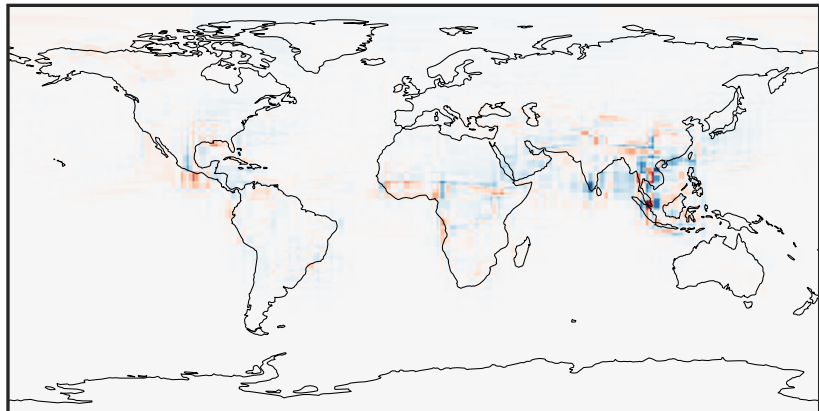
0.0002 0.0645 0.1289 0.1932 0.2576  
 $\mu\text{g}/\text{m}^3$

14.3.0-rc.0 (Dev)  
c24



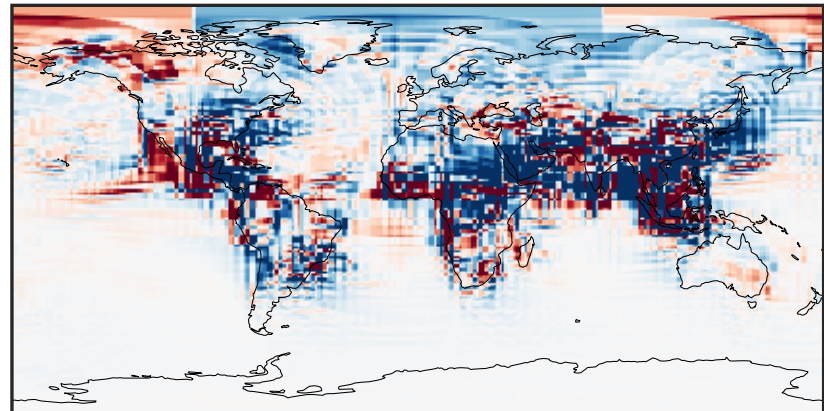
0.0002 0.0645 0.1289 0.1932 0.2576  
 $\mu\text{g}/\text{m}^3$

Difference (1x1.25)  
Dev - Ref, Dynamic Range



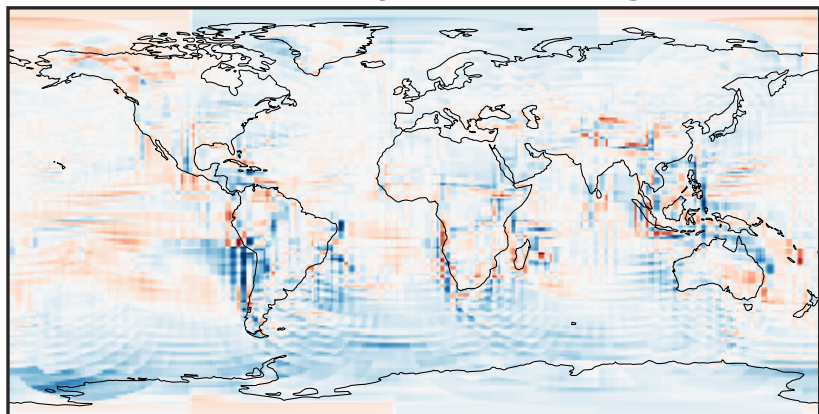
-0.0888 -0.0444 0.0000 0.0444 0.0888  
 $\mu\text{g}/\text{m}^3$

Difference (1x1.25)  
Dev - Ref, Restricted Range [5%,95%]



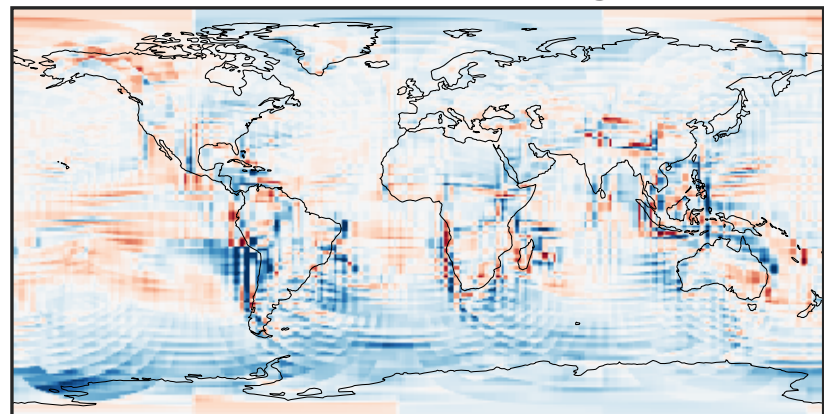
-0.0025 0.0000 0.0025  
 $\mu\text{g}/\text{m}^3$

Ratio (1x1.25)  
Dev/Ref, Dynamic Range



0.384 0.692 1.000 1.801 2.603  
unitless

Ratio (1x1.25)  
Dev/Ref, Fixed Range

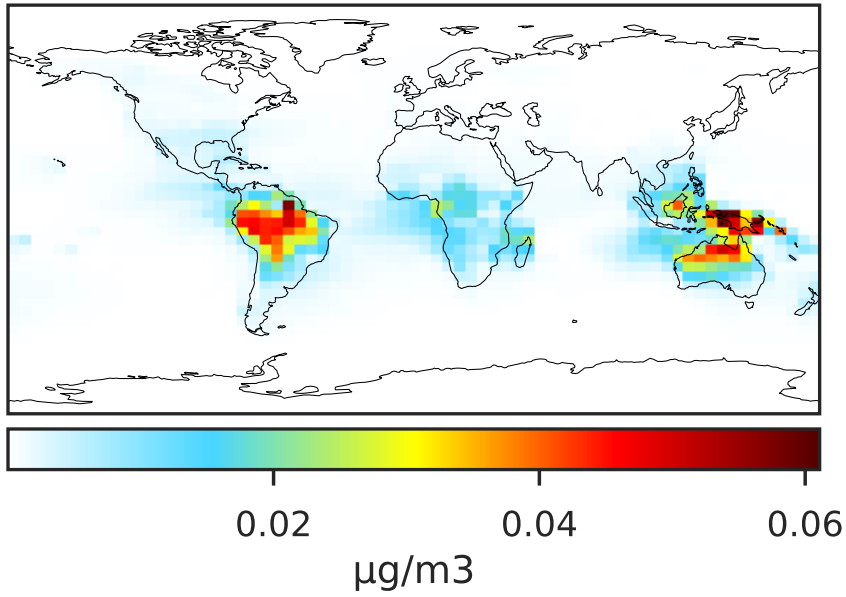


0.50 0.75 1.00 1.50 2.00  
unitless

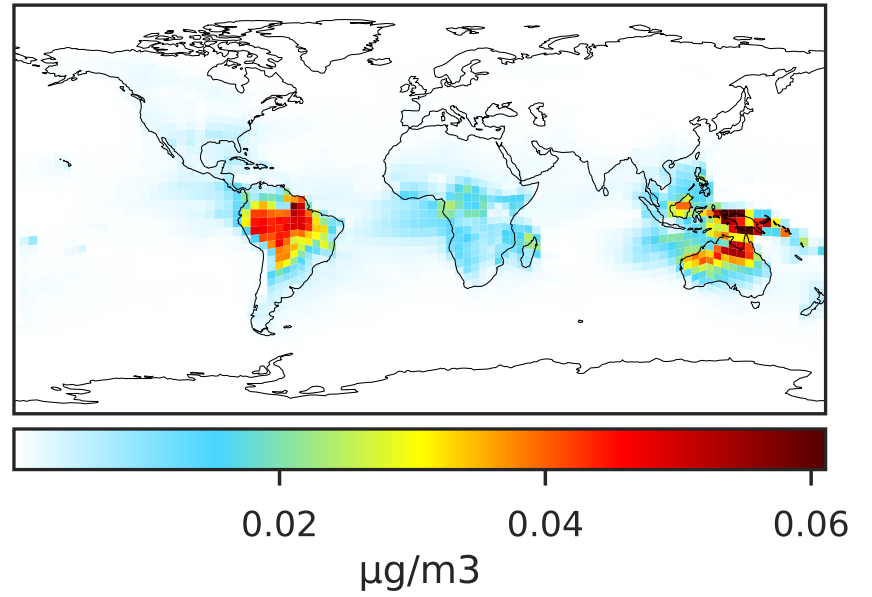


# SpeciesConcVV\_TSOG0 (Apr2019)

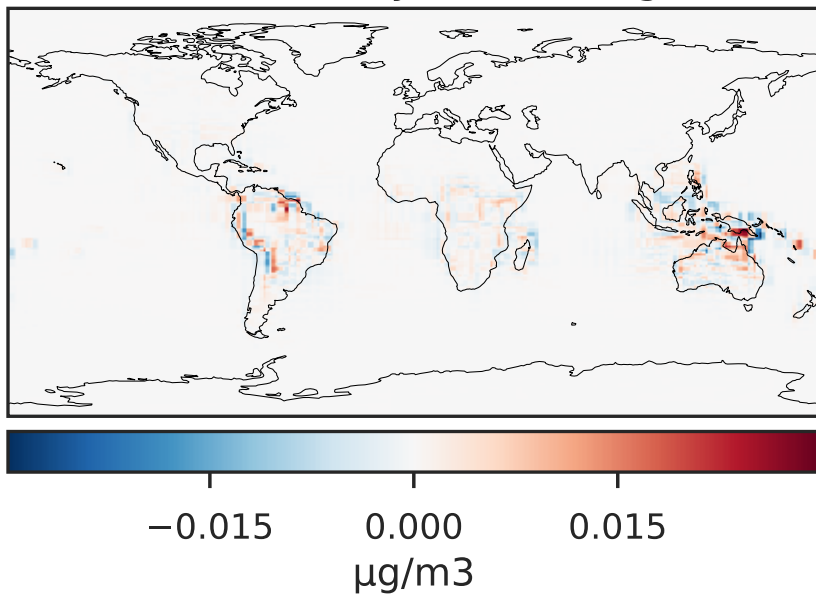
14.3.0-rc.0 (Ref)  
4.0x5.0



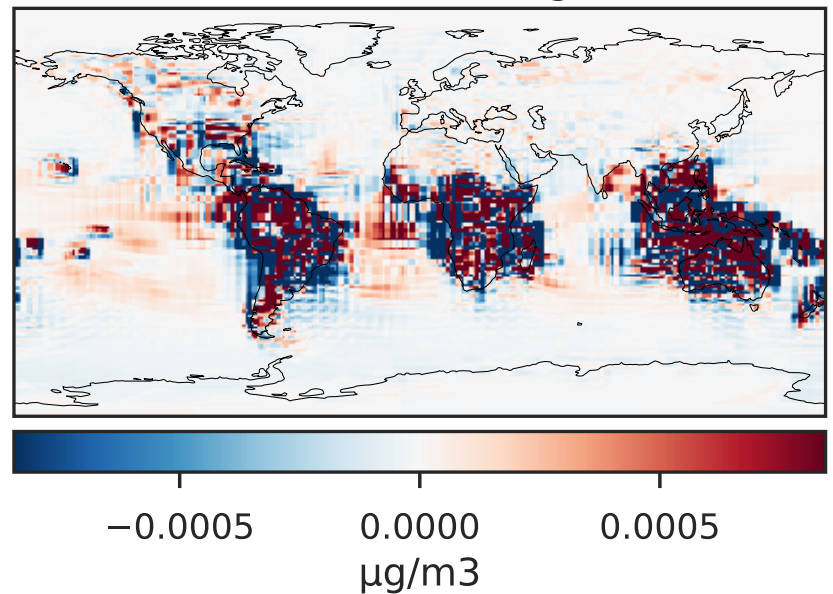
14.3.0-rc.0 (Dev)  
c24



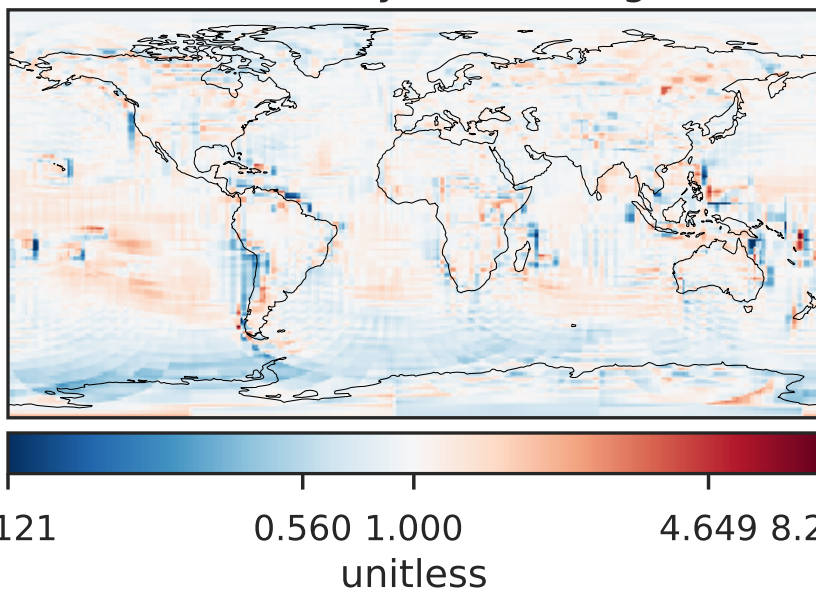
Difference (1x1.25)  
Dev - Ref, Dynamic Range



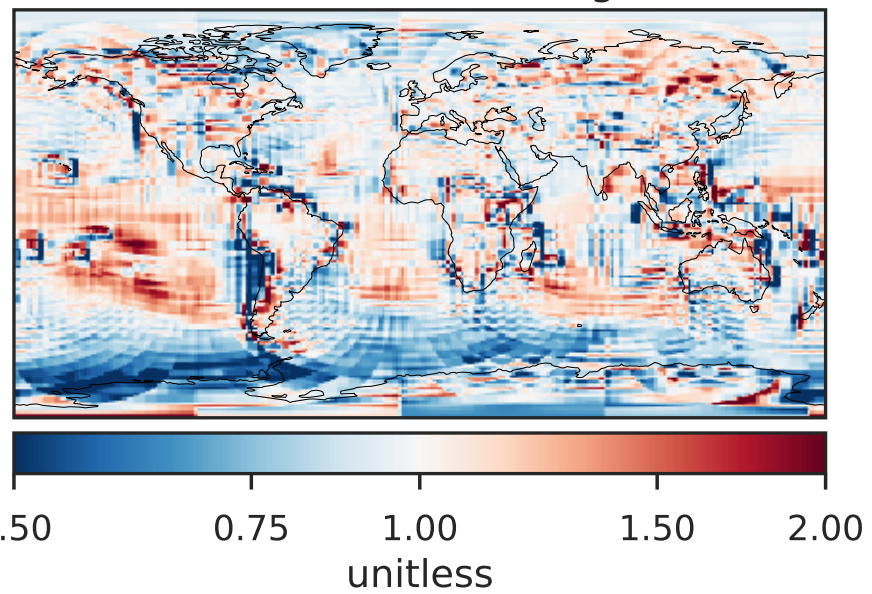
Difference (1x1.25)  
Dev - Ref, Restricted Range [5%,95%]



Ratio (1x1.25)  
Dev/Ref, Dynamic Range

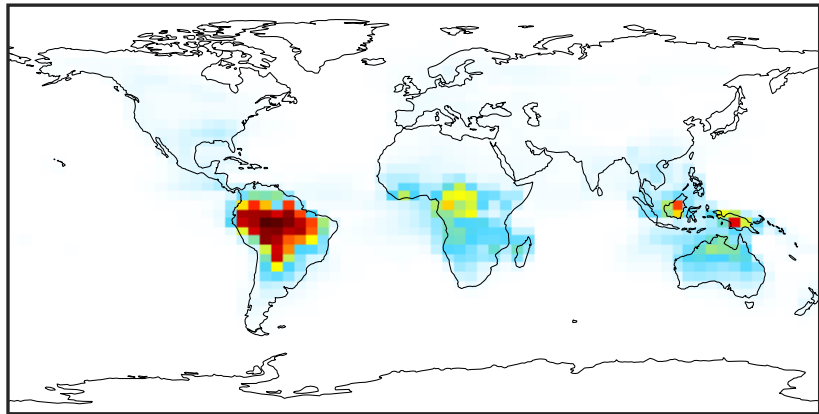


Ratio (1x1.25)  
Dev/Ref, Fixed Range



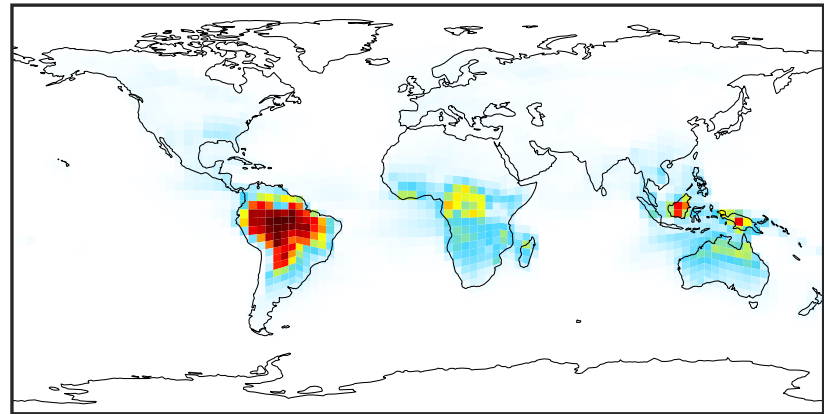
# SpeciesConcVV\_TSOG1 (Apr2019)

14.3.0-rc.0 (Ref)  
4.0x5.0



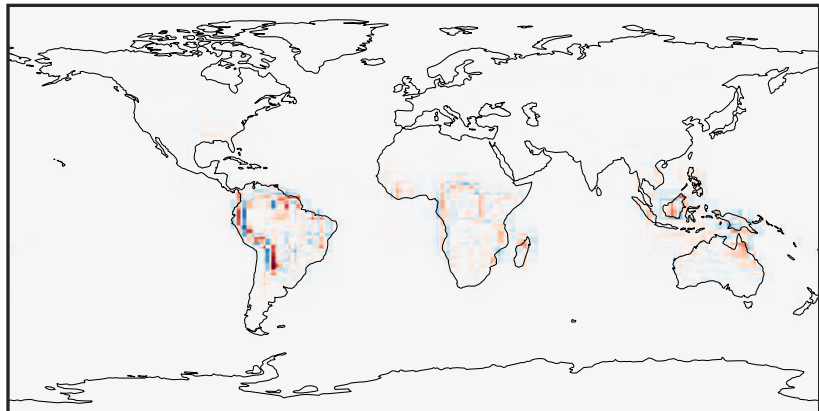
0.0000 0.0381 0.0762 0.1143 0.1524  $\mu\text{g}/\text{m}^3$

14.3.0-rc.0 (Dev)  
c24



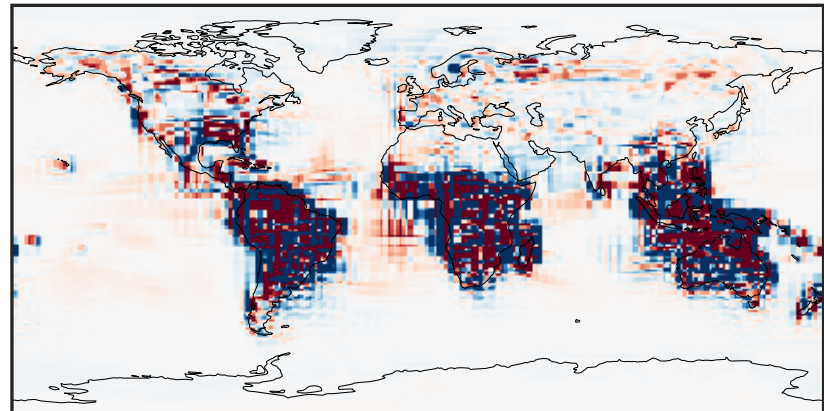
0.0000 0.0381 0.0762 0.1143 0.1524  $\mu\text{g}/\text{m}^3$

Difference (1x1.25)  
Dev - Ref, Dynamic Range



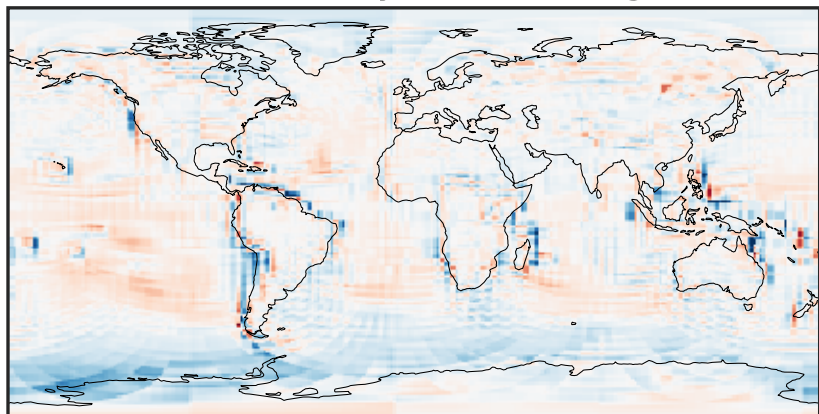
-0.0690 -0.0345 0.0000 0.0345 0.0690  $\mu\text{g}/\text{m}^3$

Difference (1x1.25)  
Dev - Ref, Restricted Range [5%,95%]



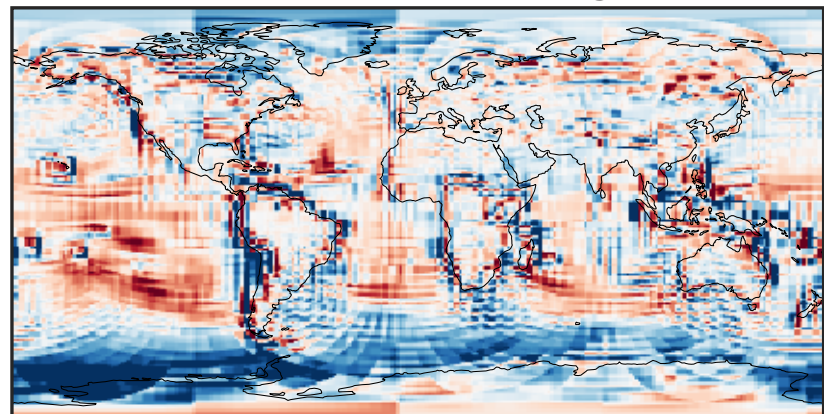
-0.0008 0.0000 0.0008  $\mu\text{g}/\text{m}^3$

Ratio (1x1.25)  
Dev/Ref, Dynamic Range



1e-01 1 10  
unitless

Ratio (1x1.25)  
Dev/Ref, Fixed Range

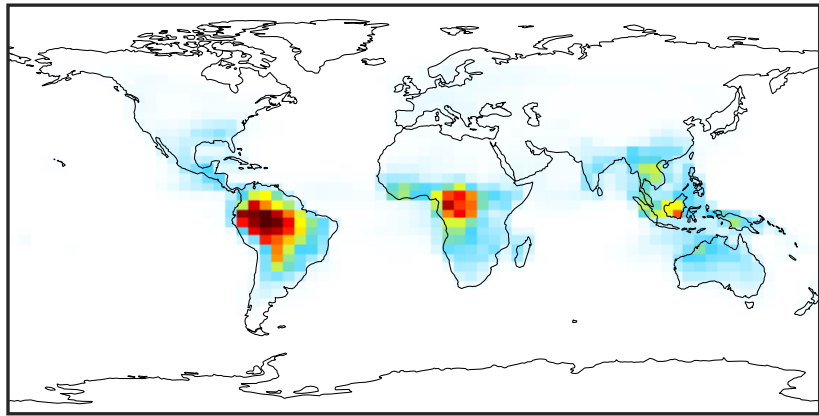


0.50 0.75 1.00 1.50 2.00  
unitless



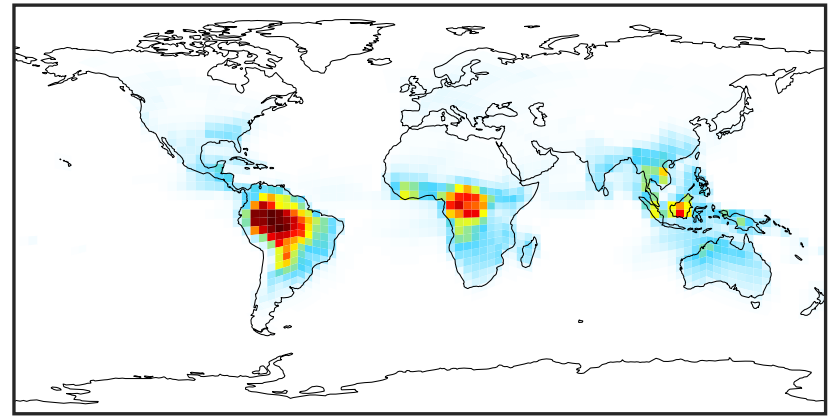
# SpeciesConcVV\_TSOG2 (Apr2019)

14.3.0-rc.0 (Ref)  
4.0x5.0



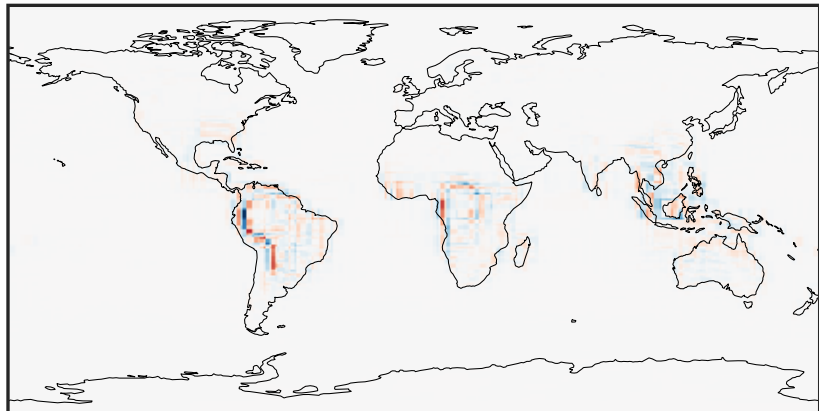
0.000 0.865 1.729 2.594 3.459  
 $\mu\text{g}/\text{m}^3$

14.3.0-rc.0 (Dev)  
c24



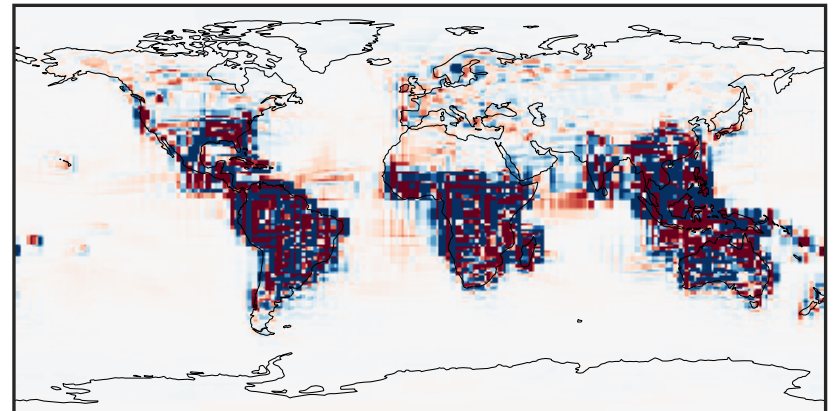
0.000 0.865 1.729 2.594 3.459  
 $\mu\text{g}/\text{m}^3$

Difference (1x1.25)  
Dev - Ref, Dynamic Range



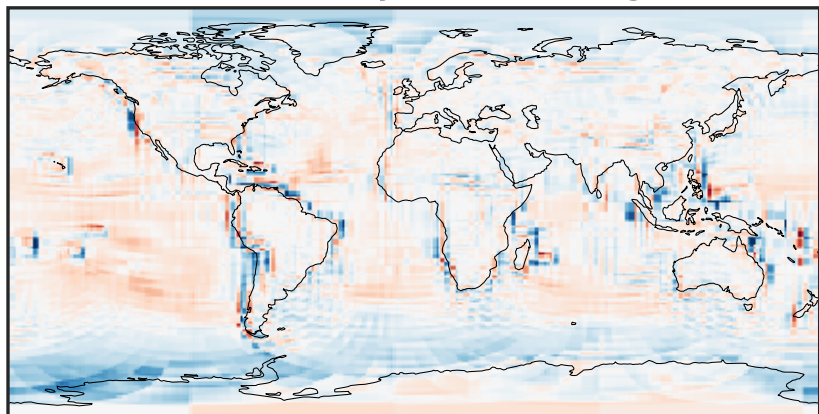
-1.6 -0.8 0.0 0.8 1.6  
 $\mu\text{g}/\text{m}^3$

Difference (1x1.25)  
Dev - Ref, Restricted Range [5%,95%]



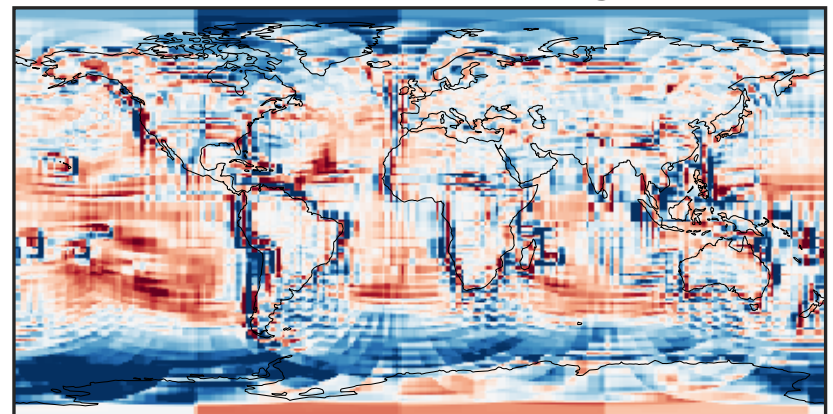
-0.02 0.00 0.02  
 $\mu\text{g}/\text{m}^3$

Ratio (1x1.25)  
Dev/Ref, Dynamic Range



0.101 0.550 1.000 5.452 9.905  
unitless

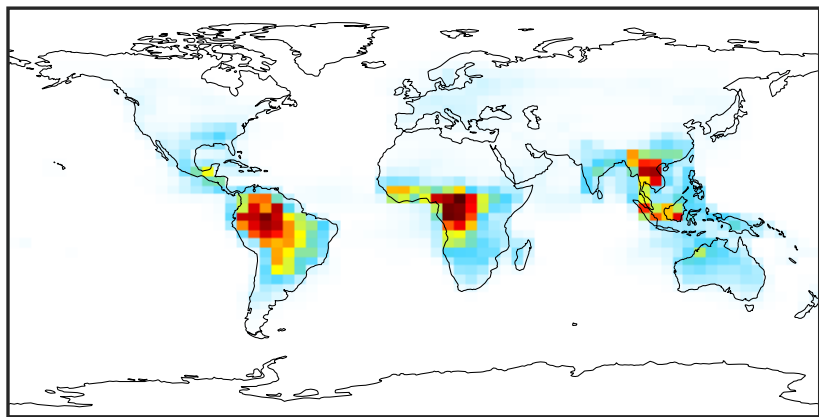
Ratio (1x1.25)  
Dev/Ref, Fixed Range



0.50 0.75 1.00 1.50 2.00  
unitless

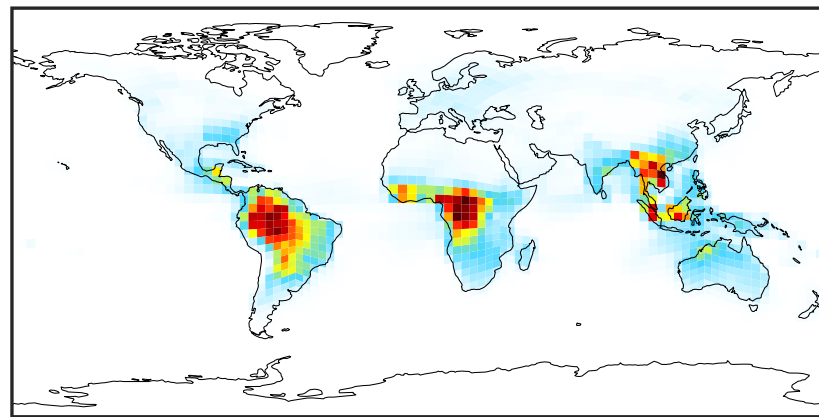
# SpeciesConcVV\_TSOG3 (Apr2019)

14.3.0-rc.0 (Ref)  
4.0x5.0



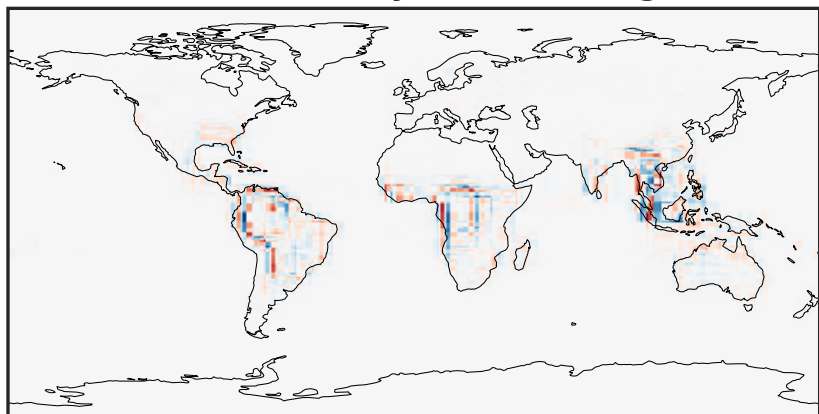
0.000 1.617 3.234 4.851 6.467  
 $\mu\text{g}/\text{m}^3$

14.3.0-rc.0 (Dev)  
c24



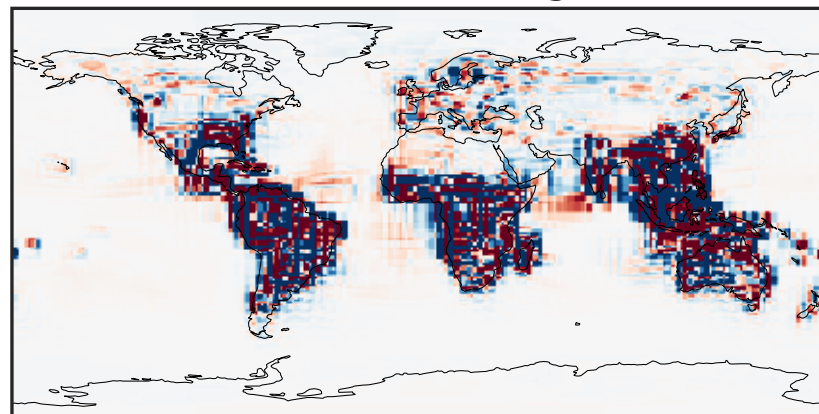
0.000 1.617 3.234 4.851 6.467  
 $\mu\text{g}/\text{m}^3$

Difference (1x1.25)  
Dev - Ref, Dynamic Range



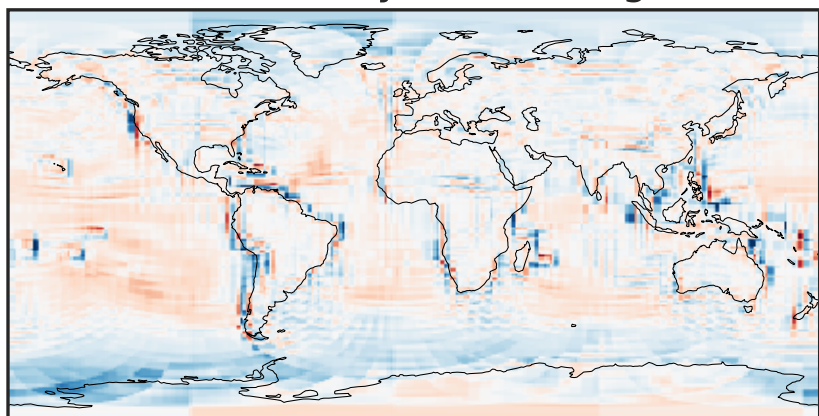
-2.582 -1.291 0.000 1.291 2.582  
 $\mu\text{g}/\text{m}^3$

Difference (1x1.25)  
Dev - Ref, Restricted Range [5%,95%]



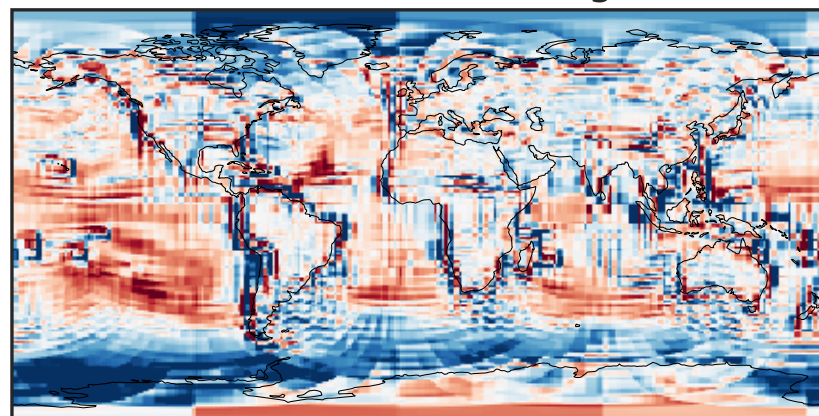
-0.0908 -0.0454 0.0000 0.0454 0.0908  
 $\mu\text{g}/\text{m}^3$

Ratio (1x1.25)  
Dev/Ref, Dynamic Range



1e-01 1 10  
unitless

Ratio (1x1.25)  
Dev/Ref, Fixed Range

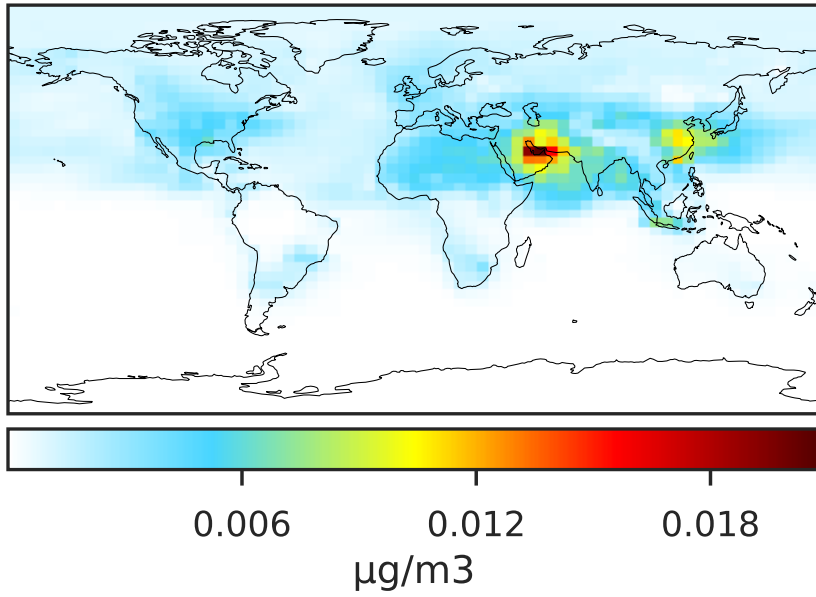


0.50 0.75 1.00 1.50 2.00  
unitless

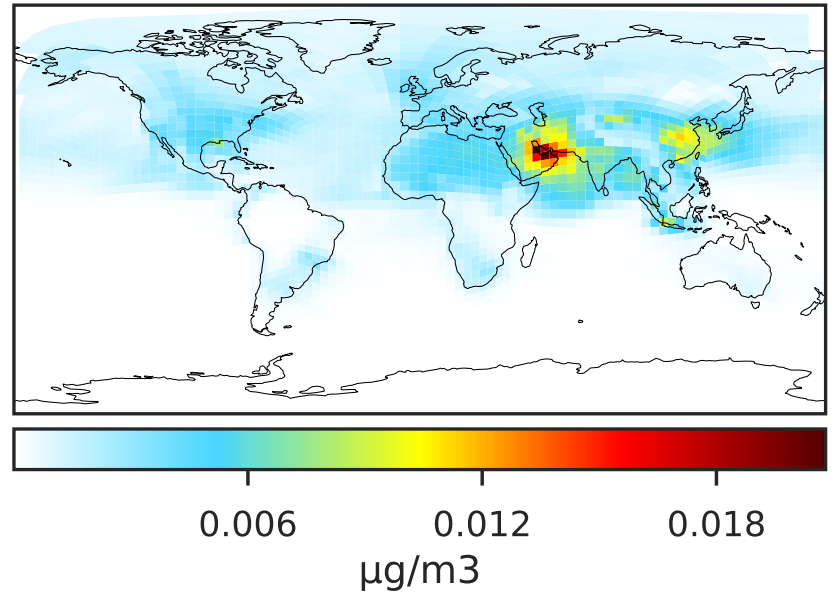


# SpeciesConcVV\_ASOG1 (Apr2019)

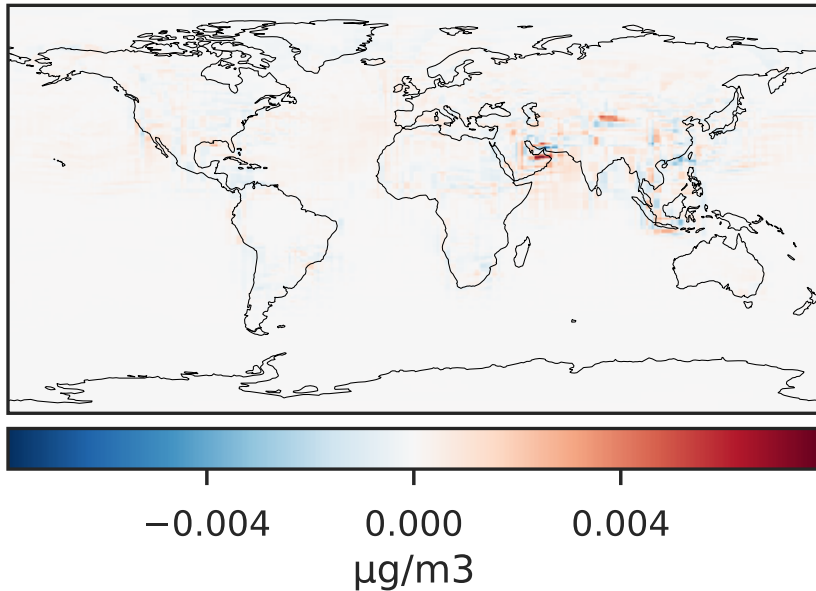
14.3.0-rc.0 (Ref)  
4.0x5.0



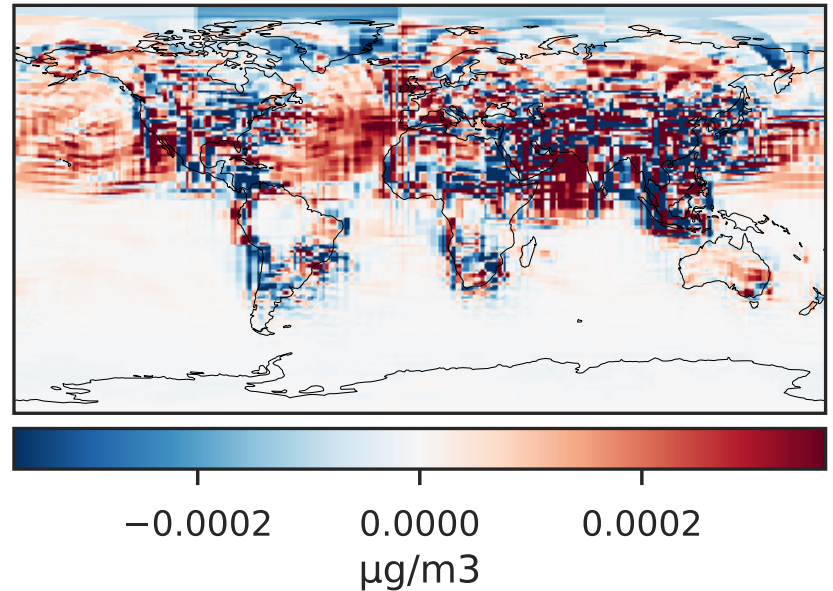
14.3.0-rc.0 (Dev)  
c24



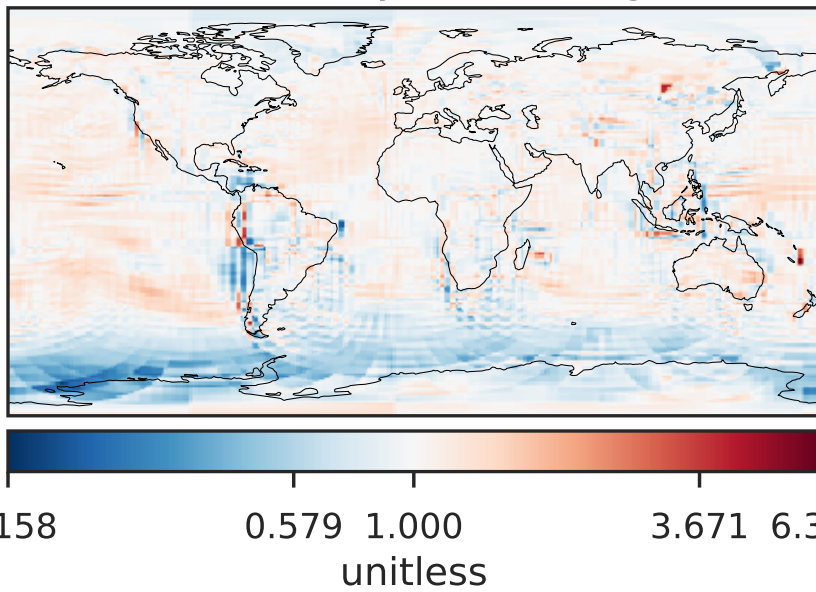
Difference (1x1.25)  
Dev - Ref, Dynamic Range



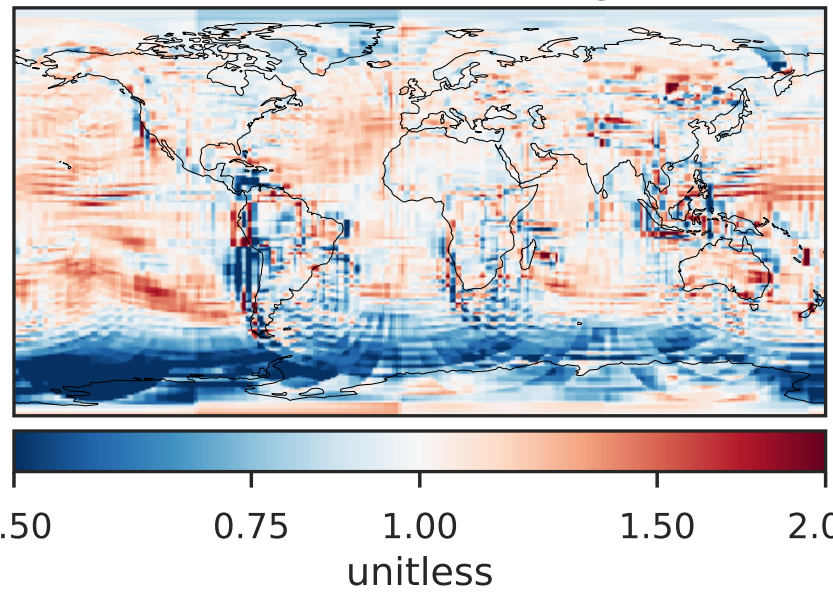
Difference (1x1.25)  
Dev - Ref, Restricted Range [5%,95%]



Ratio (1x1.25)  
Dev/Ref, Dynamic Range

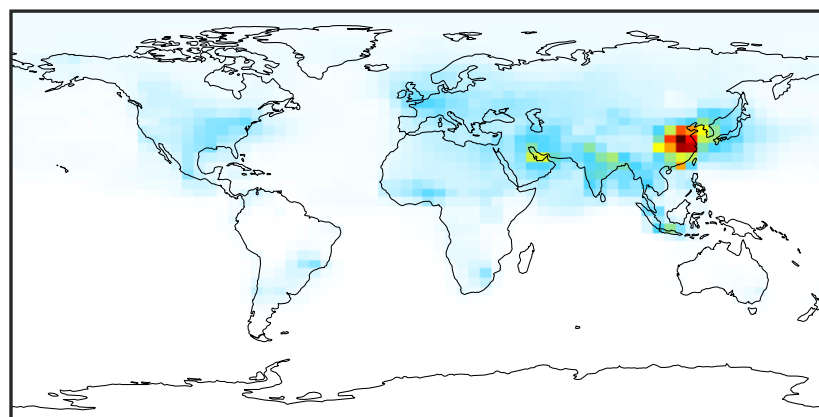


Ratio (1x1.25)  
Dev/Ref, Fixed Range



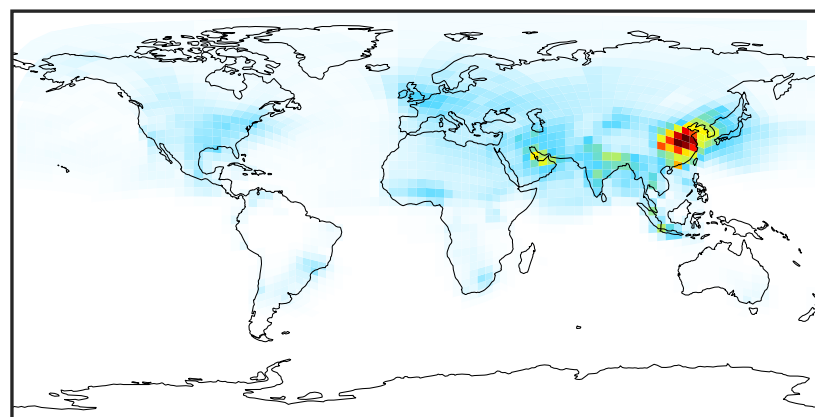
# SpeciesConcVV\_ASOG2 (Apr2019)

14.3.0-rc.0 (Ref)  
4.0x5.0



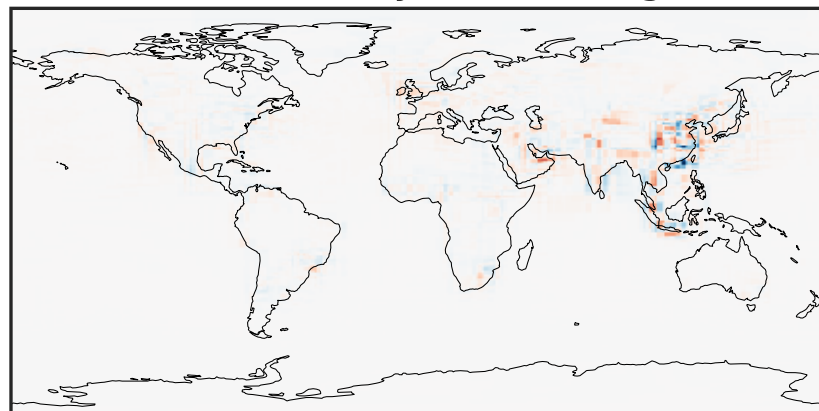
0.025 0.050 0.075  
 $\mu\text{g}/\text{m}^3$

14.3.0-rc.0 (Dev)  
c24



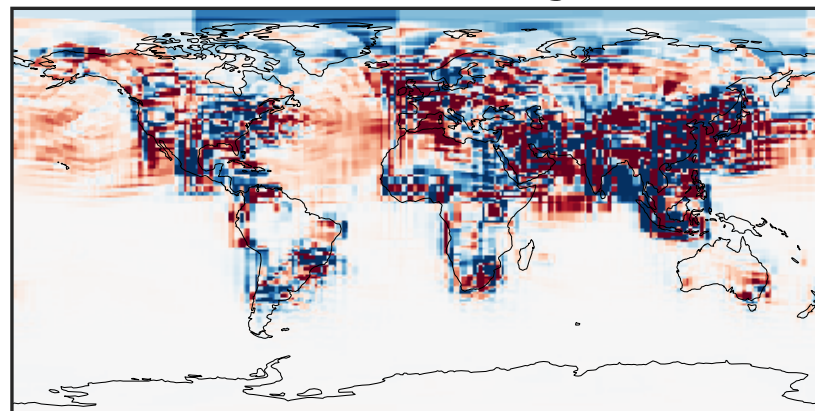
0.025 0.050 0.075  
 $\mu\text{g}/\text{m}^3$

Difference (1x1.25)  
Dev - Ref, Dynamic Range



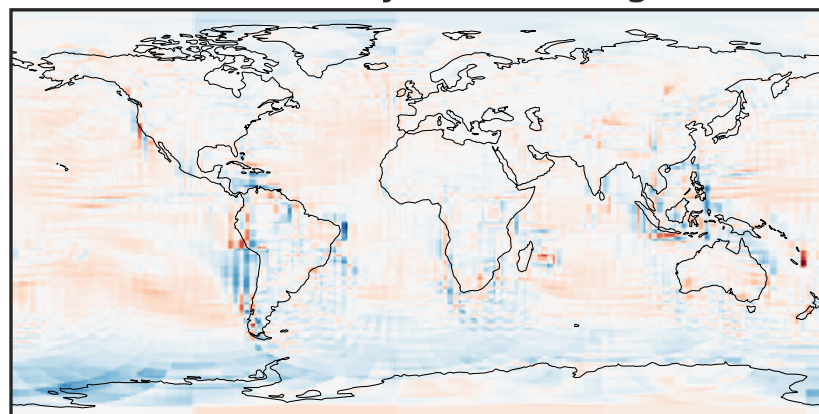
-0.02 0.00 0.02  
 $\mu\text{g}/\text{m}^3$

Difference (1x1.25)  
Dev - Ref, Restricted Range [5%,95%]



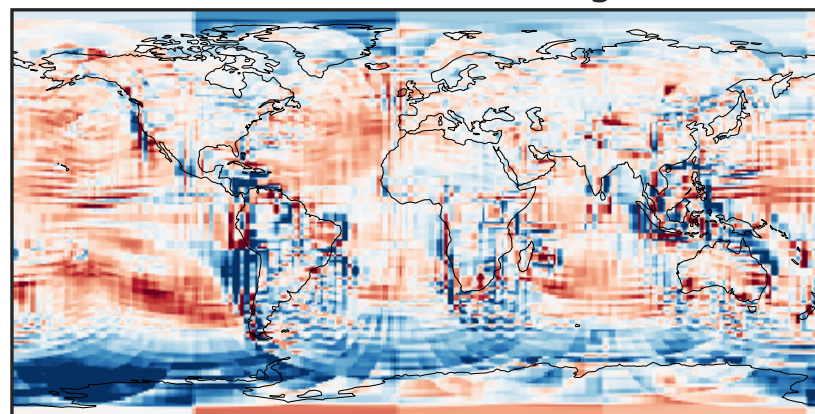
-0.0005 0.0000 0.0005  
 $\mu\text{g}/\text{m}^3$

Ratio (1x1.25)  
Dev/Ref, Dynamic Range



1e-01 1 10  
unitless

Ratio (1x1.25)  
Dev/Ref, Fixed Range

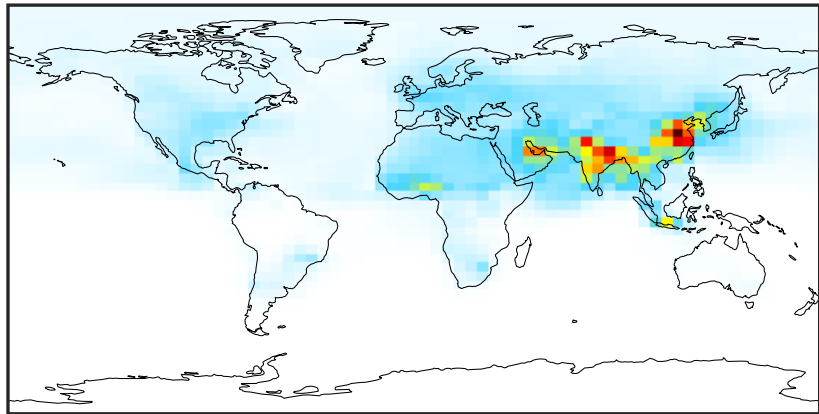


0.50 0.75 1.00 1.50 2.00  
unitless



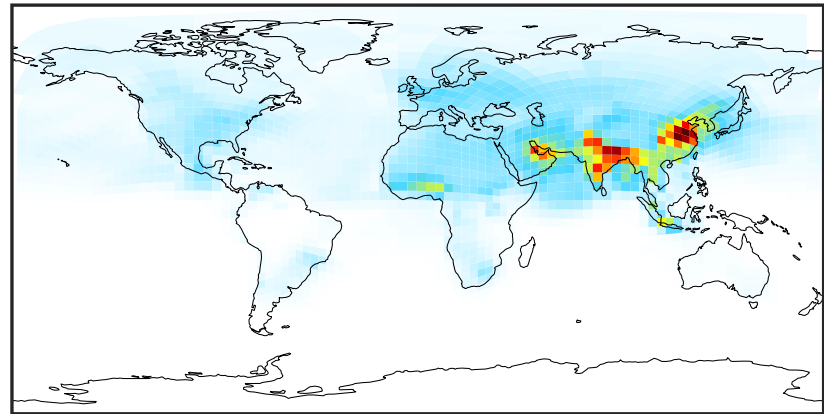
# SpeciesConcVV\_ASOG3 (Apr2019)

14.3.0-rc.0 (Ref)  
4.0x5.0



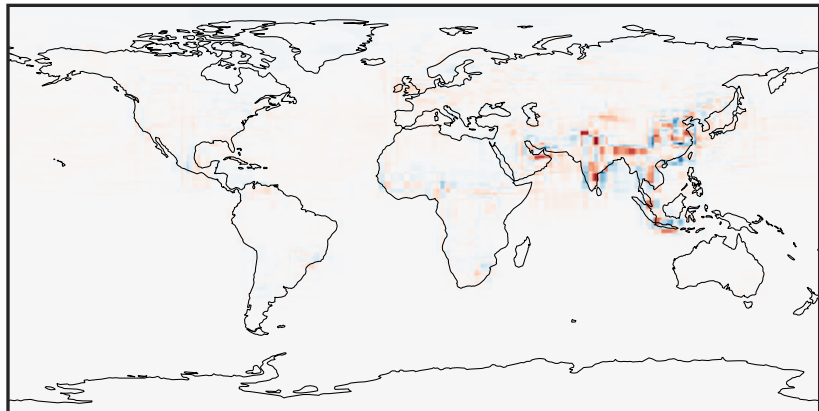
0.0001 0.0954 0.1907 0.2860 0.3813  
 $\mu\text{g}/\text{m}^3$

14.3.0-rc.0 (Dev)  
c24



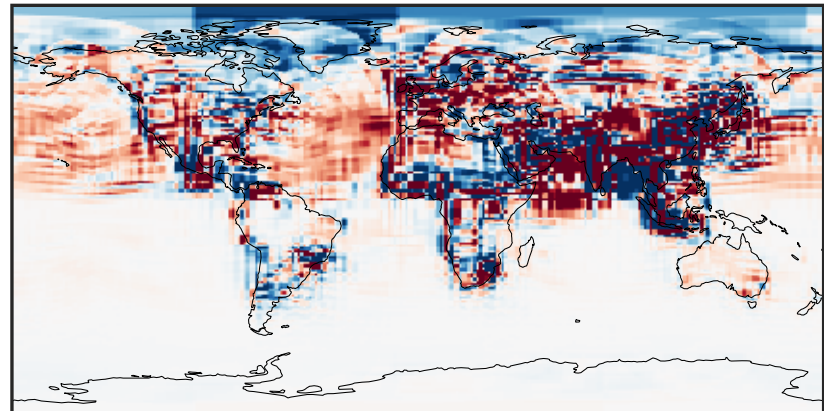
0.0001 0.0954 0.1907 0.2860 0.3813  
 $\mu\text{g}/\text{m}^3$

Difference (1x1.25)  
Dev - Ref, Dynamic Range



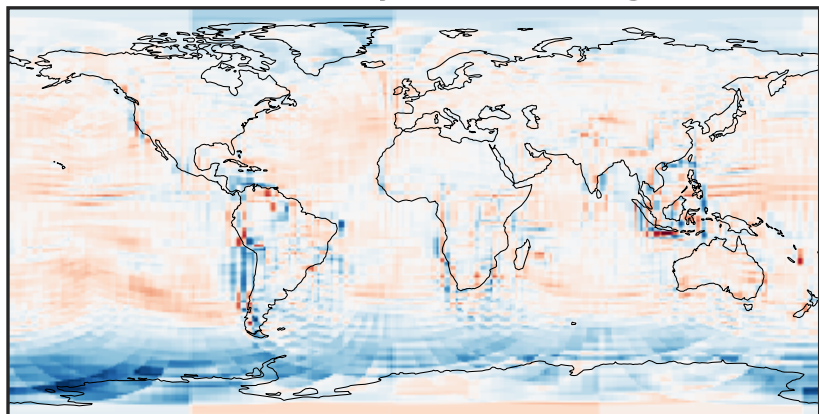
-0.1306 -0.0653 0.0000 0.0653 0.1306  
 $\mu\text{g}/\text{m}^3$

Difference (1x1.25)  
Dev - Ref, Restricted Range [5%,95%]



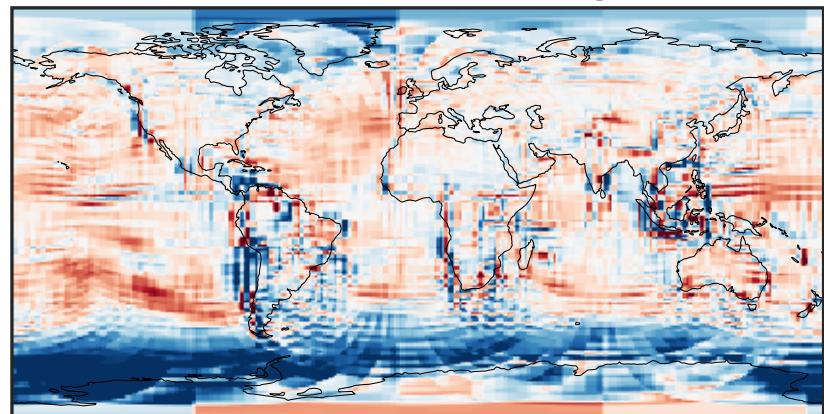
-0.003 0.000 0.003  
 $\mu\text{g}/\text{m}^3$

Ratio (1x1.25)  
Dev/Ref, Dynamic Range



0.201 0.600 1.000 2.992 4.984  
unitless

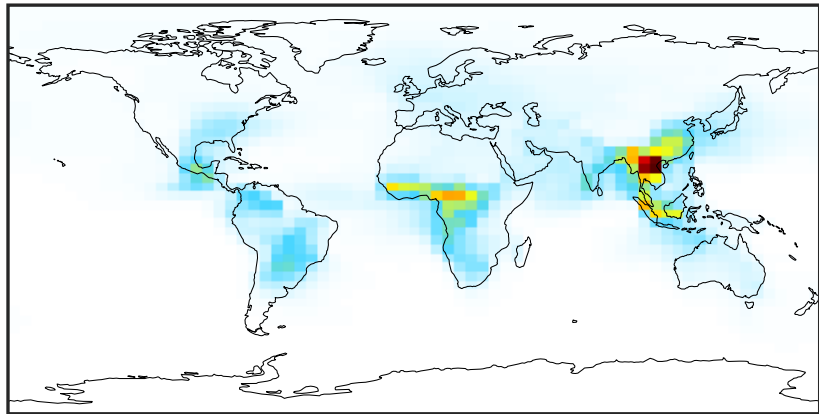
Ratio (1x1.25)  
Dev/Ref, Fixed Range



0.50 0.75 1.00 1.50 2.00  
unitless

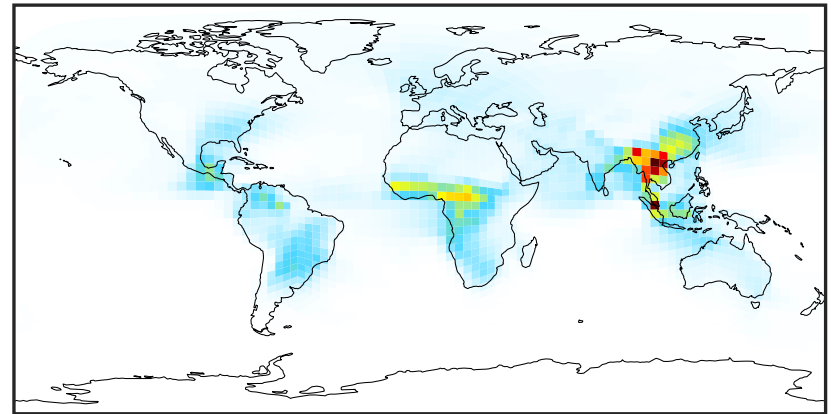
# SpeciesConcVV\_INDIOL (Apr2019)

14.3.0-rc.0 (Ref)  
4.0x5.0



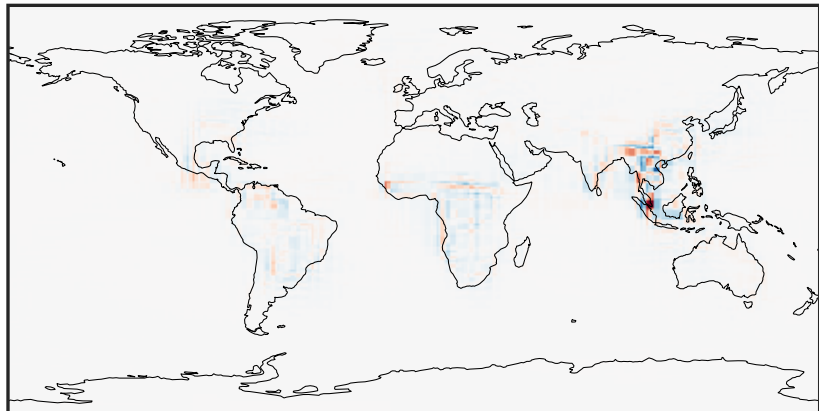
0.001 2.291 4.580 6.870 9.159  
 $\mu\text{g}/\text{m}^3$

14.3.0-rc.0 (Dev)  
c24



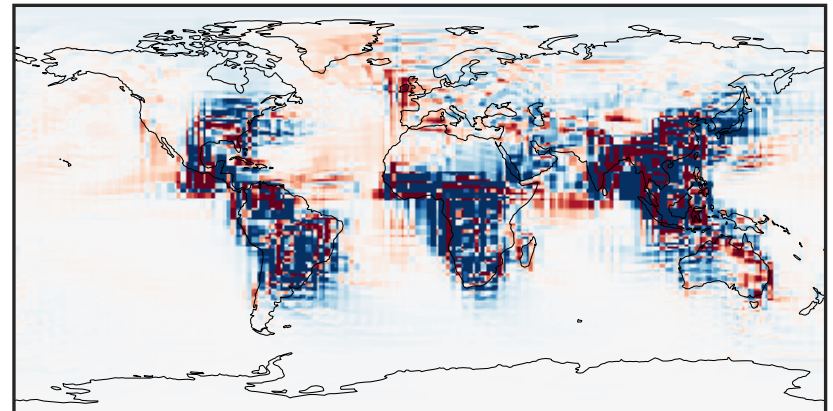
0.001 2.291 4.580 6.870 9.159  
 $\mu\text{g}/\text{m}^3$

Difference (1x1.25)  
Dev - Ref, Dynamic Range



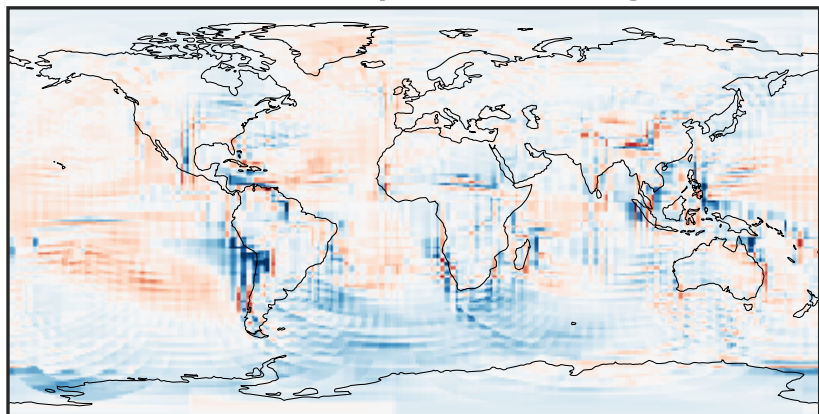
-4.26 -2.13 0.00 2.13 4.26  
 $\mu\text{g}/\text{m}^3$

Difference (1x1.25)  
Dev - Ref, Restricted Range [5%,95%]



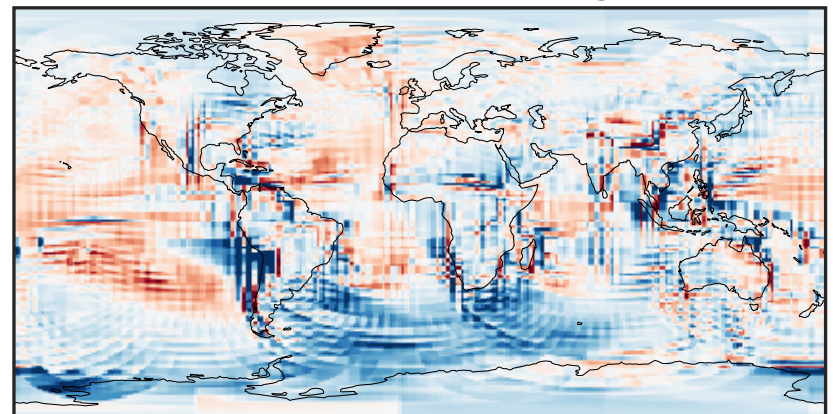
-0.1288 -0.0644 0.0000 0.0644 0.1288  
 $\mu\text{g}/\text{m}^3$

Ratio (1x1.25)  
Dev/Ref, Dynamic Range



0.259 0.629 1.000 2.433 3.865  
unitless

Ratio (1x1.25)  
Dev/Ref, Fixed Range

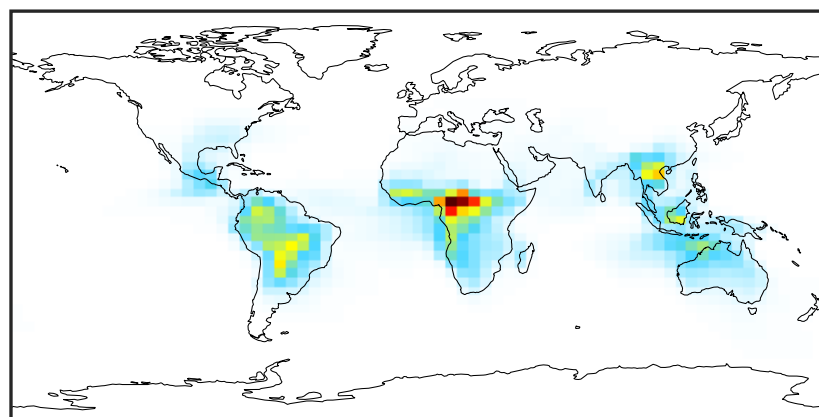


0.50 0.75 1.00 1.50 2.00  
unitless



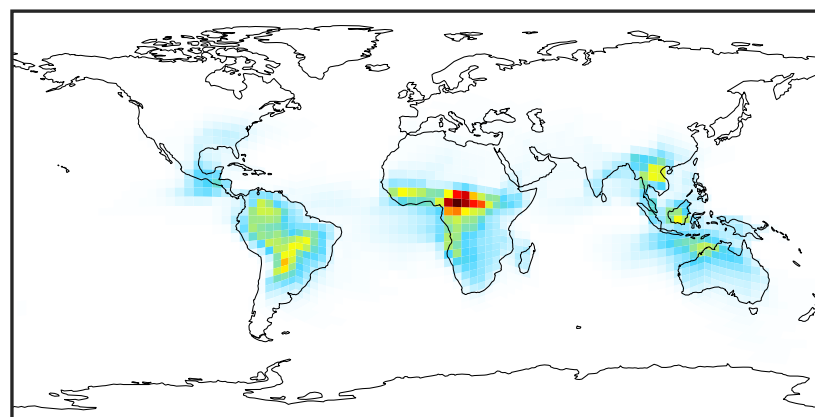
# SpeciesConcVV\_LVOCOA (Apr2019)

14.3.0-rc.0 (Ref)  
4.0x5.0



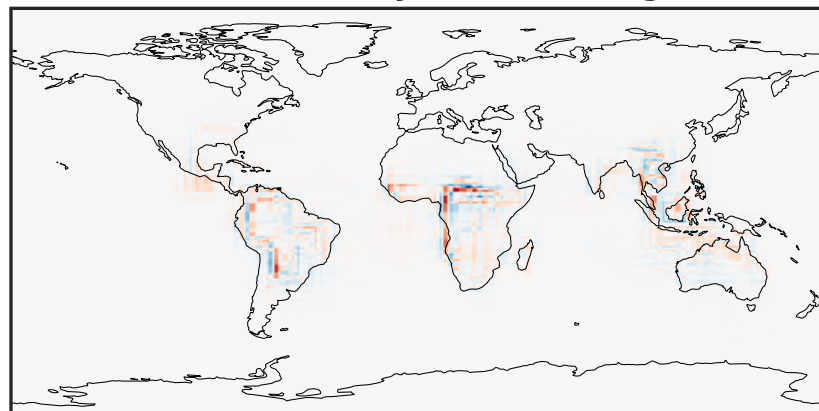
0.0001 0.0698 0.1395 0.2092 0.2789  
 $\mu\text{g}/\text{m}^3$

14.3.0-rc.0 (Dev)  
c24



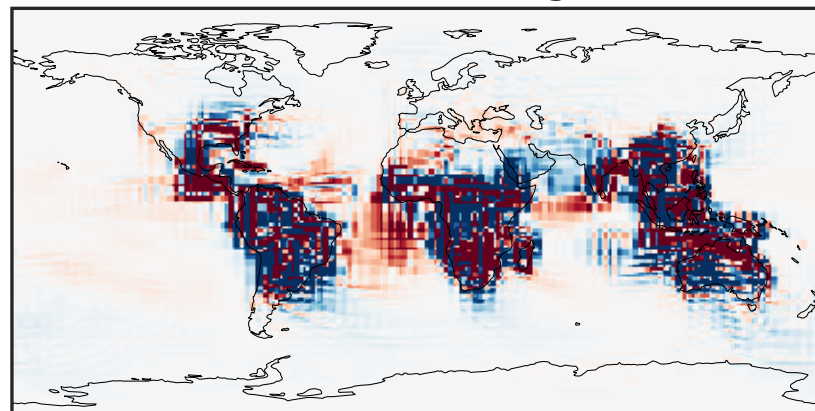
0.0001 0.0698 0.1395 0.2092 0.2789  
 $\mu\text{g}/\text{m}^3$

Difference (1x1.25)  
Dev - Ref, Dynamic Range



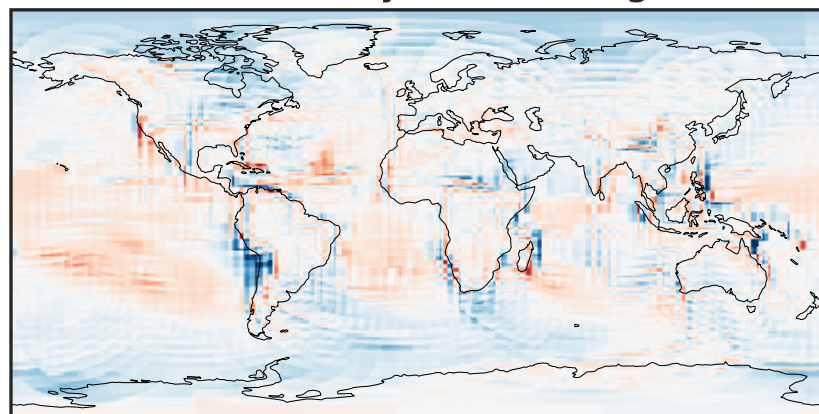
-0.0956 -0.0478 0.0000 0.0478 0.0956  
 $\mu\text{g}/\text{m}^3$

Difference (1x1.25)  
Dev - Ref, Restricted Range [5%,95%]



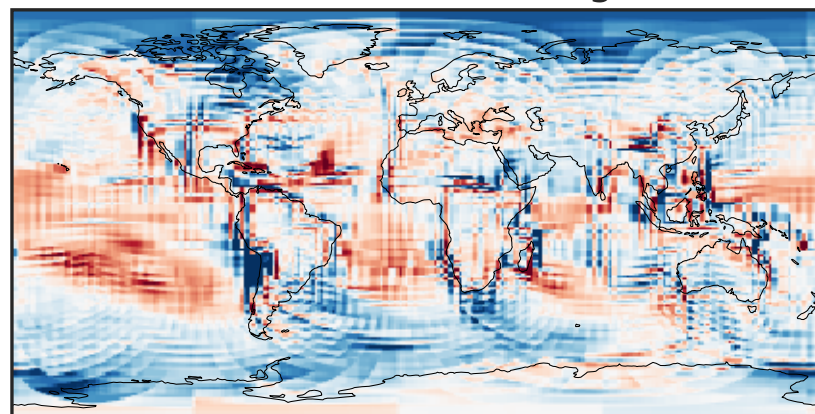
-0.0015 0.0000 0.0015  
 $\mu\text{g}/\text{m}^3$

Ratio (1x1.25)  
Dev/Ref, Dynamic Range



0.169 0.585 1.000 3.455 5.910  
unitless

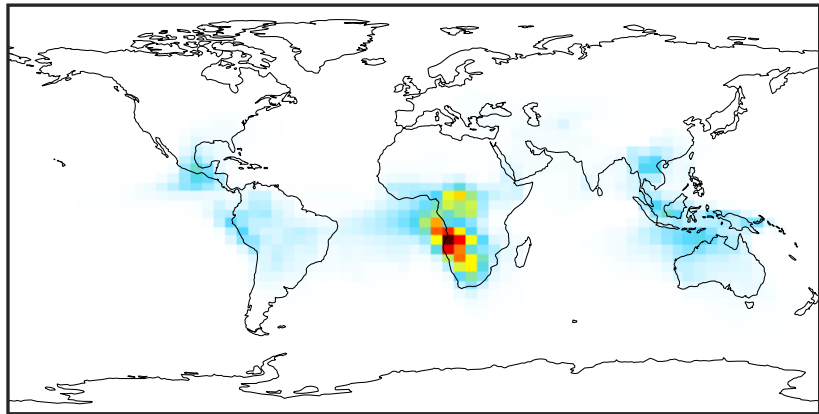
Ratio (1x1.25)  
Dev/Ref, Fixed Range



0.50 0.75 1.00 1.50 2.00  
unitless

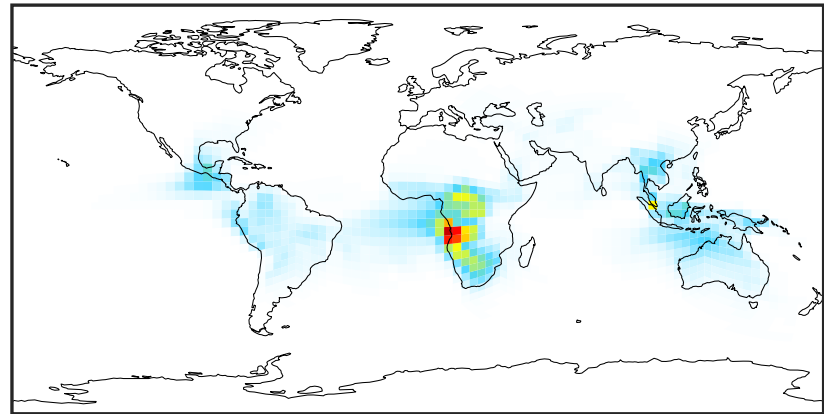
# SpeciesConcVV\_SOAIE (Apr2019)

14.3.0-rc.0 (Ref)  
4.0x5.0



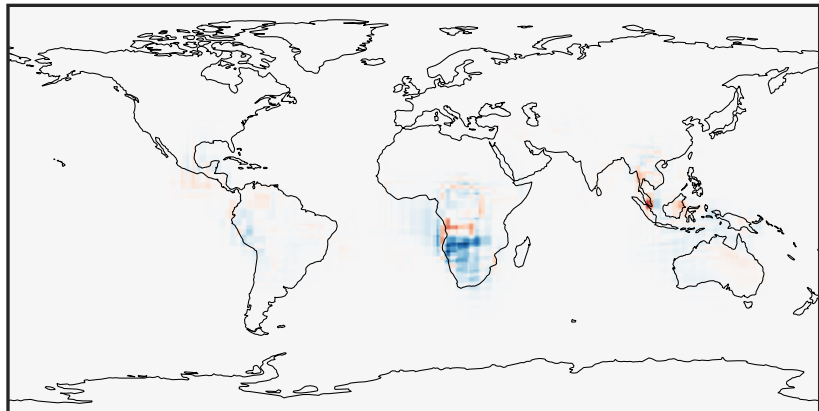
0.001 1.362 2.722 4.083 5.444  
 $\mu\text{g}/\text{m}^3$

14.3.0-rc.0 (Dev)  
c24



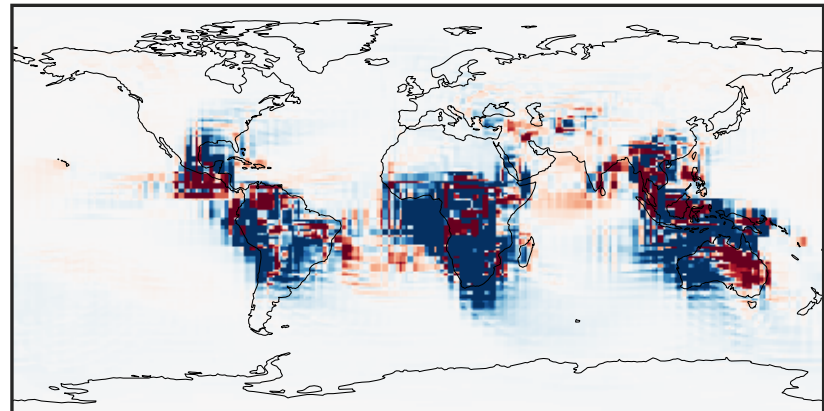
0.001 1.362 2.722 4.083 5.444  
 $\mu\text{g}/\text{m}^3$

Difference (1x1.25)  
Dev - Ref, Dynamic Range



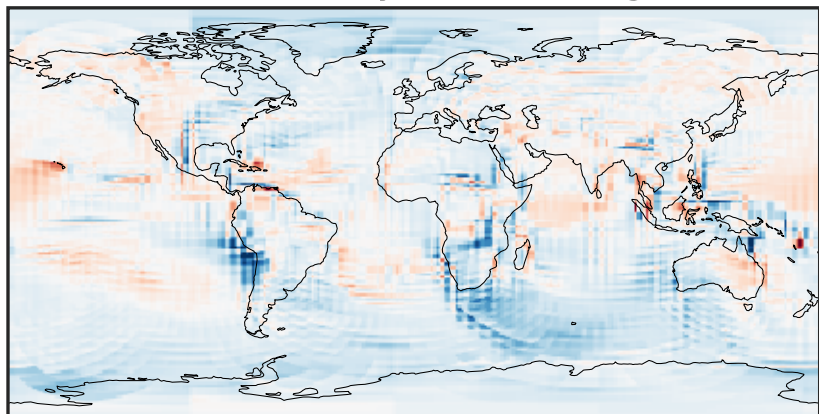
-2.92 -1.46 0.00 1.46 2.92  
 $\mu\text{g}/\text{m}^3$

Difference (1x1.25)  
Dev - Ref, Restricted Range [5%,95%]



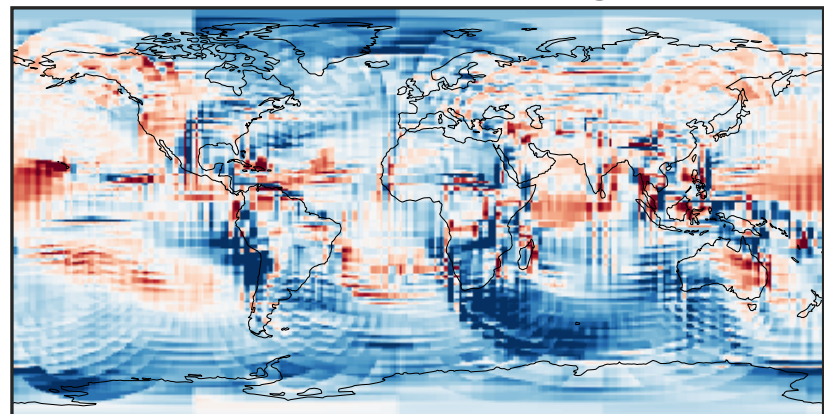
-0.0585 -0.0293 0.0000 0.0293 0.0585  
 $\mu\text{g}/\text{m}^3$

Ratio (1x1.25)  
Dev/Ref, Dynamic Range



0.130 0.565 1.000 4.351 7.702  
unitless

Ratio (1x1.25)  
Dev/Ref, Fixed Range

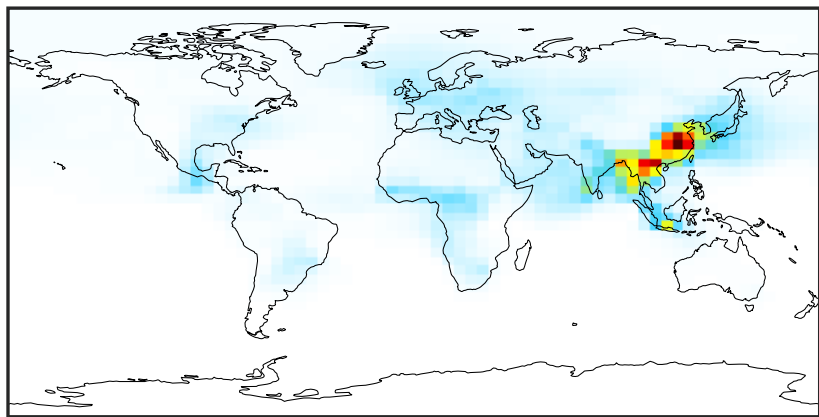


0.50 0.75 1.00 1.50 2.00  
unitless



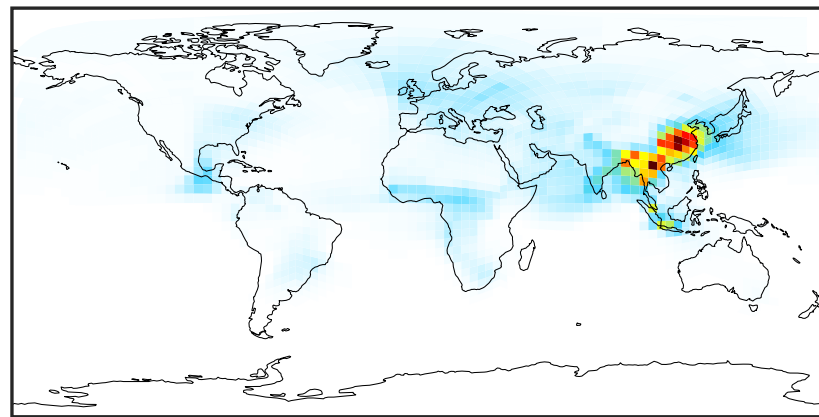
# SpeciesConcVV\_SOAGX (Apr2019)

14.3.0-rc.0 (Ref)  
4.0x5.0



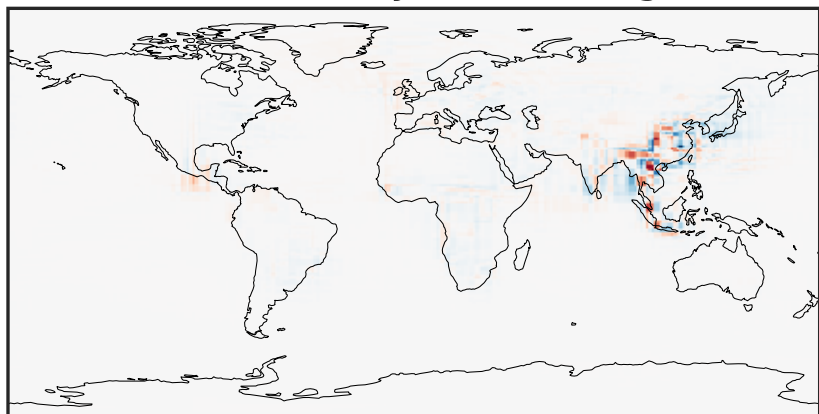
0.000 0.299 0.598 0.897 1.196  
µg/m<sup>3</sup>

14.3.0-rc.0 (Dev)  
c24



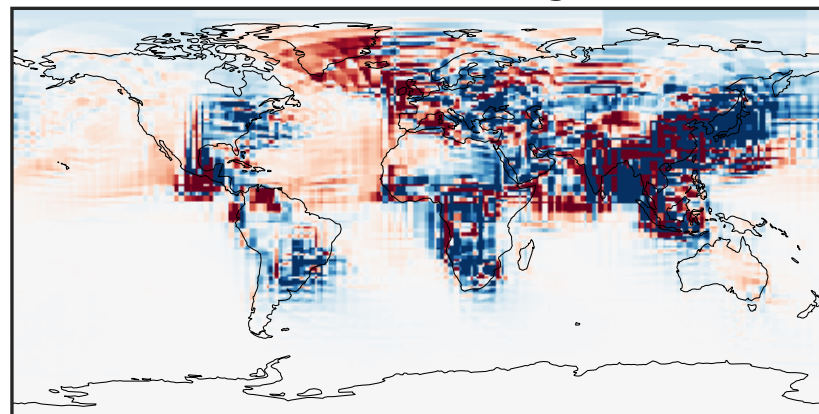
0.000 0.299 0.598 0.897 1.196  
µg/m<sup>3</sup>

Difference (1x1.25)  
Dev - Ref, Dynamic Range



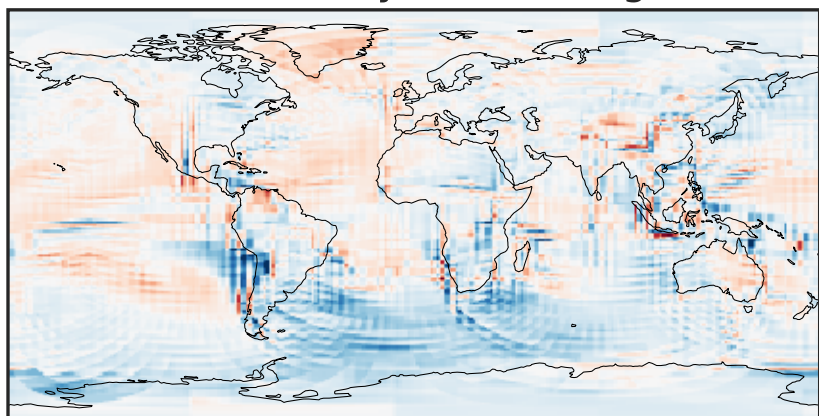
-0.4431 -0.2215 0.0000 0.2215 0.4431  
µg/m<sup>3</sup>

Difference (1x1.25)  
Dev - Ref, Restricted Range [5%,95%]



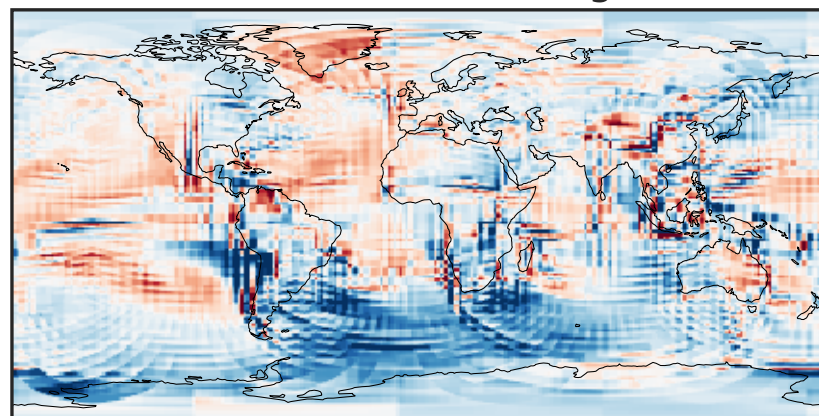
-0.006 0.000 0.006  
µg/m<sup>3</sup>

Ratio (1x1.25)  
Dev/Ref, Dynamic Range



0.248 0.624 1.000 2.519 4.037  
unitless

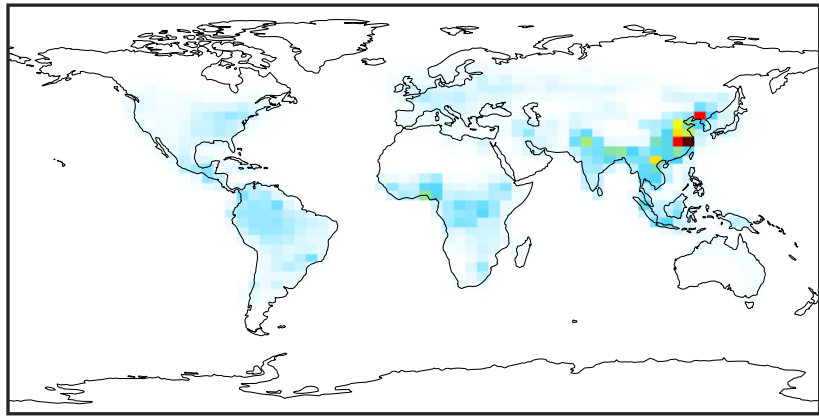
Ratio (1x1.25)  
Dev/Ref, Fixed Range



0.50 0.75 1.00 1.50 2.00  
unitless

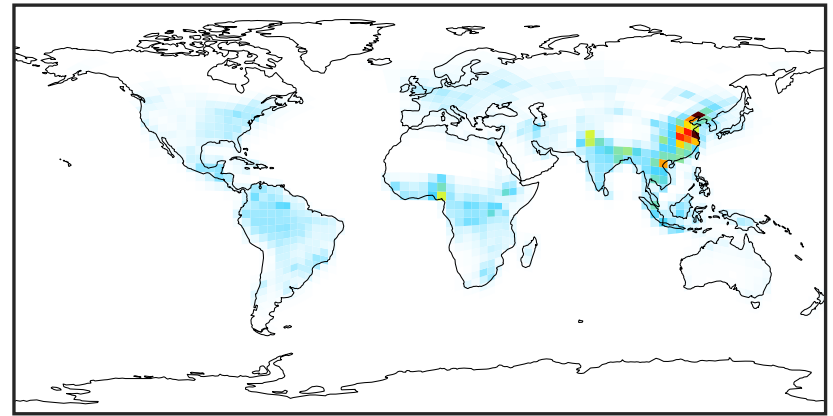
# SpeciesConcVV\_SOAP (Apr2019)

14.3.0-rc.0 (Ref)  
4.0x5.0



0.00 3.01 6.02 9.04 12.05  
 $\mu\text{g}/\text{m}^3$

14.3.0-rc.0 (Dev)  
c24



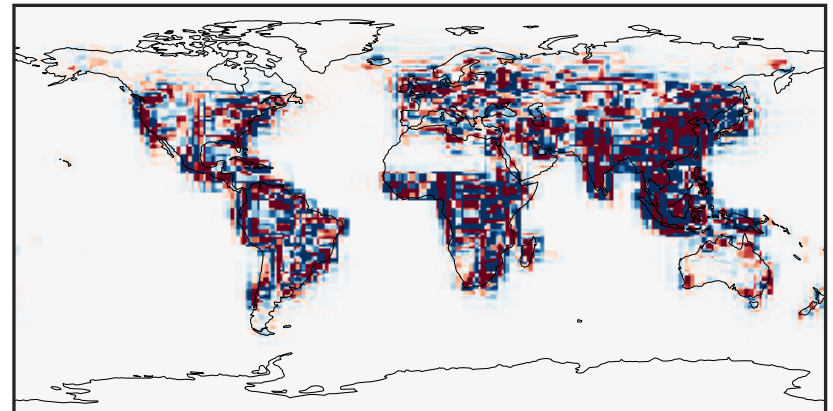
0.00 3.01 6.02 9.04 12.05  
 $\mu\text{g}/\text{m}^3$

Difference (1x1.25)  
Dev - Ref, Dynamic Range



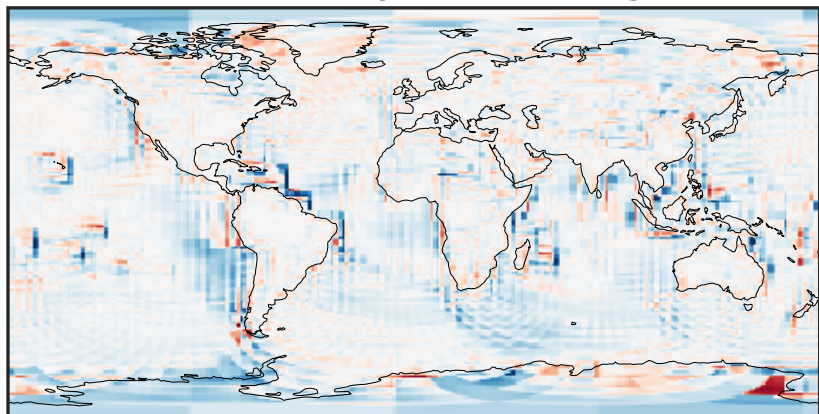
-13.44 -6.72 0.00 6.72 13.44  
 $\mu\text{g}/\text{m}^3$

Difference (1x1.25)  
Dev - Ref, Restricted Range [5%,95%]



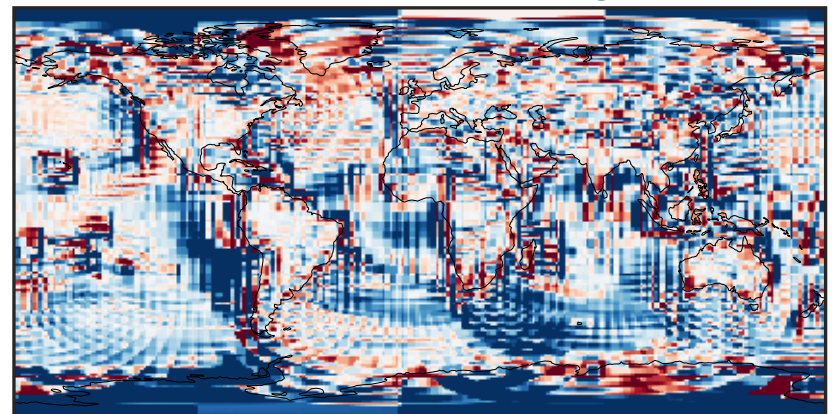
-0.0982 -0.0491 0.0000 0.0491 0.0982  
 $\mu\text{g}/\text{m}^3$

Ratio (1x1.25)  
Dev/Ref, Dynamic Range



1e-01 1 10  
unitless

Ratio (1x1.25)  
Dev/Ref, Fixed Range

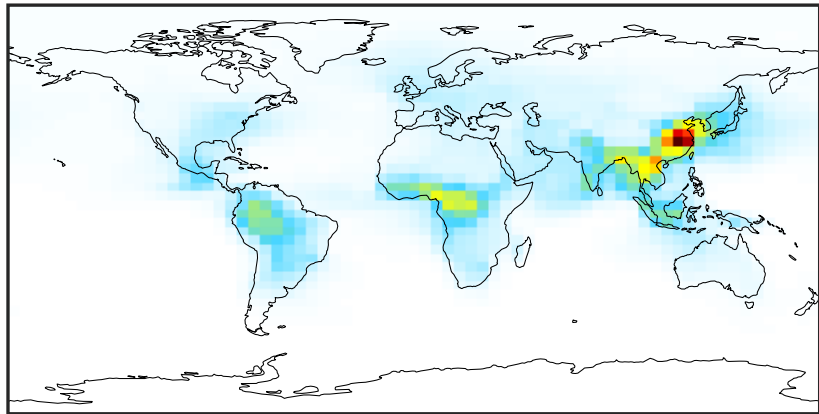


0.50 0.75 1.00 1.50 2.00  
unitless



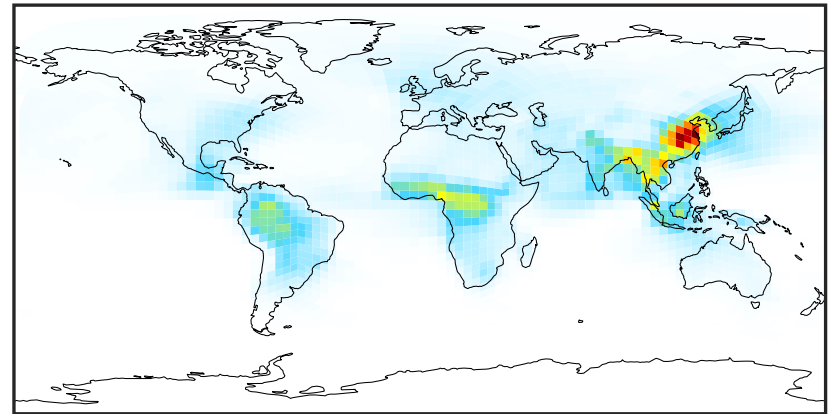
# SpeciesConcVV\_SOAS (Apr2019)

14.3.0-rc.0 (Ref)  
4.0x5.0



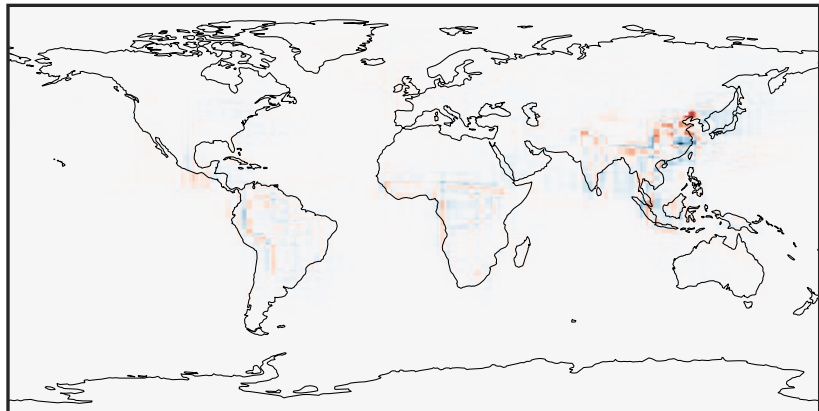
0.00 3.55 7.10 10.65 14.20  
 $\mu\text{g}/\text{m}^3$

14.3.0-rc.0 (Dev)  
c24



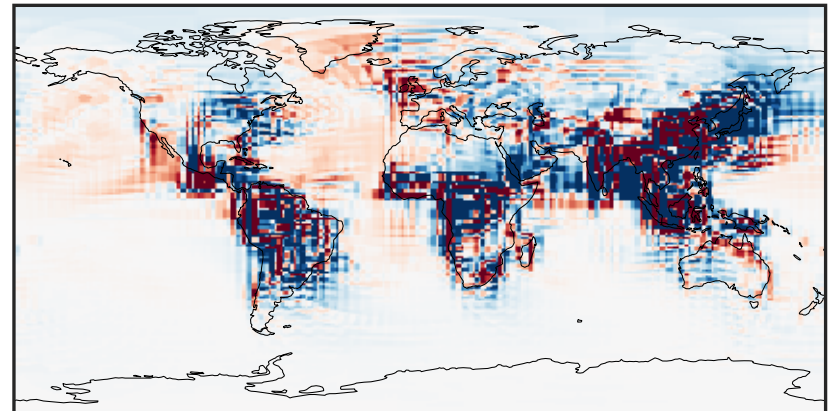
0.00 3.55 7.10 10.65 14.20  
 $\mu\text{g}/\text{m}^3$

Difference (1x1.25)  
Dev - Ref, Dynamic Range



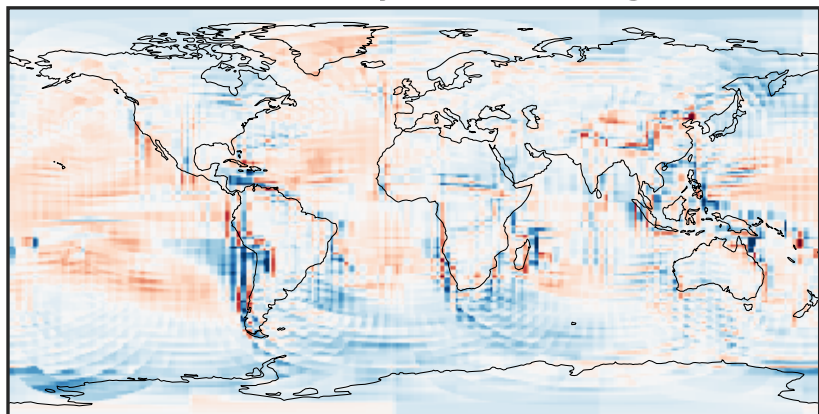
-6.04 -3.02 0.00 3.02 6.04  
 $\mu\text{g}/\text{m}^3$

Difference (1x1.25)  
Dev - Ref, Restricted Range [5%,95%]



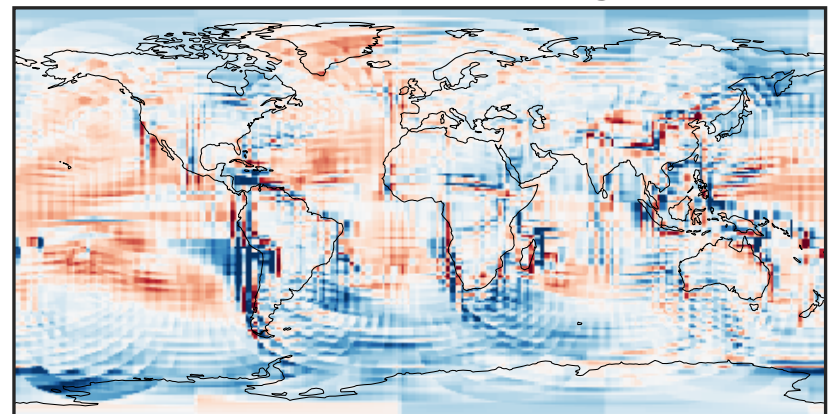
-0.1914 -0.0957 0.0000 0.0957 0.1914  
 $\mu\text{g}/\text{m}^3$

Ratio (1x1.25)  
Dev/Ref, Dynamic Range



0.315 0.657 1.000 2.088 3.177  
unitless

Ratio (1x1.25)  
Dev/Ref, Fixed Range



0.50 0.75 1.00 1.50 2.00  
unitless