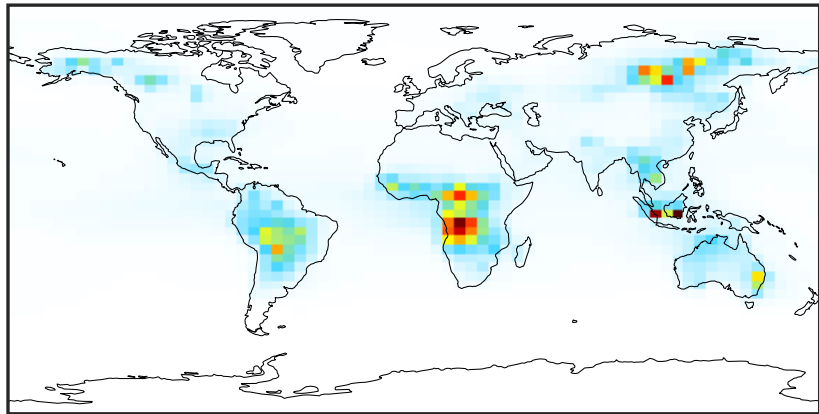


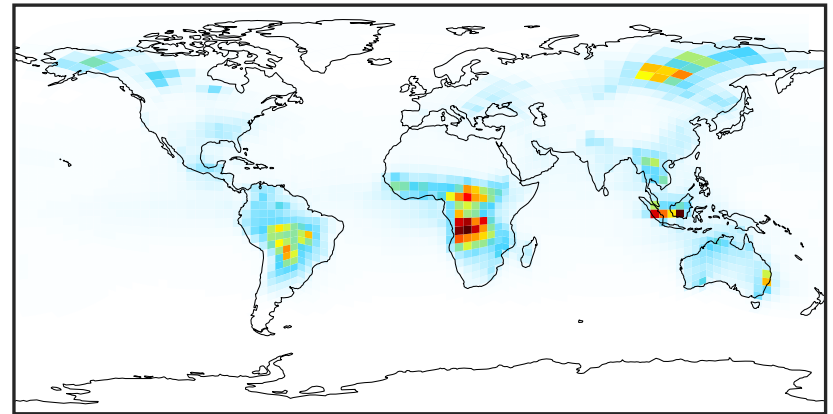
# SpeciesConcVV\_ACTA (AnnualMean)

14.3.0-rc.0 (Ref)  
4.0x5.0



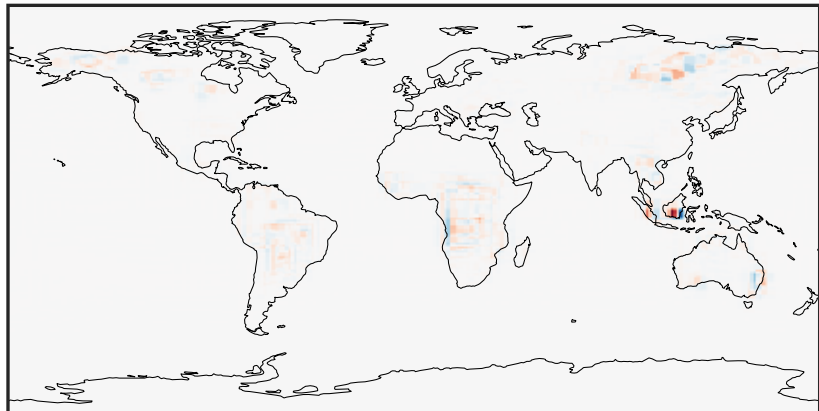
0.003 0.612 1.222 1.831 2.441  
ppb

14.3.0-rc.0 (Dev)  
c24



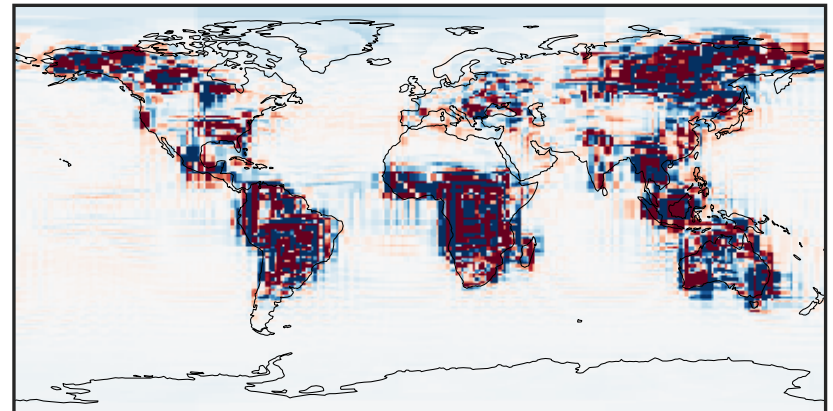
0.003 0.612 1.222 1.831 2.441  
ppb

Difference (1x1.25)  
Dev - Ref, Dynamic Range



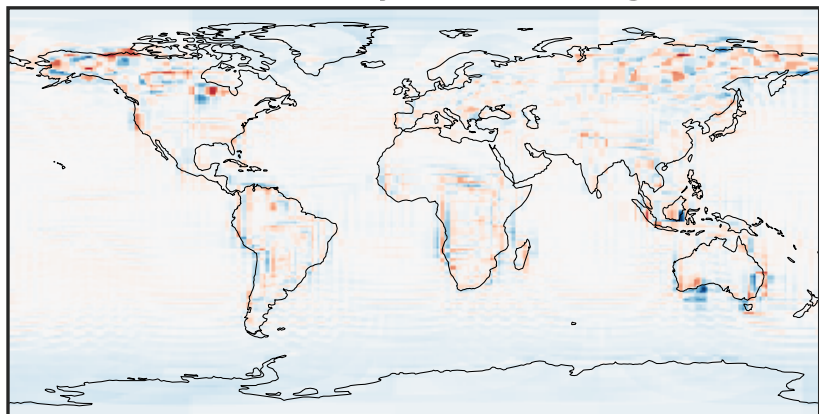
-2.628 -1.314 0.000 1.314 2.628  
ppb

Difference (1x1.25)  
Dev - Ref, Restricted Range [5%,95%]



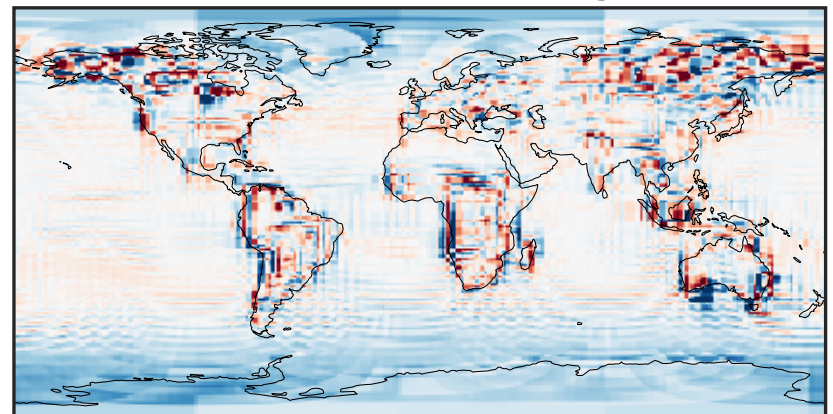
-0.015 0.000 0.015  
ppb

Ratio (1x1.25)  
Dev/Ref, Dynamic Range



0.117 0.558 1.000 4.781 8.562  
unitless

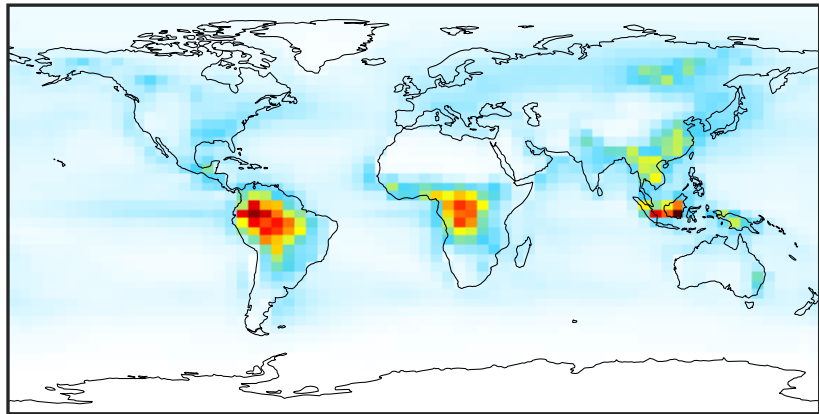
Ratio (1x1.25)  
Dev/Ref, Fixed Range



0.50 0.75 1.00 1.50 2.00  
unitless

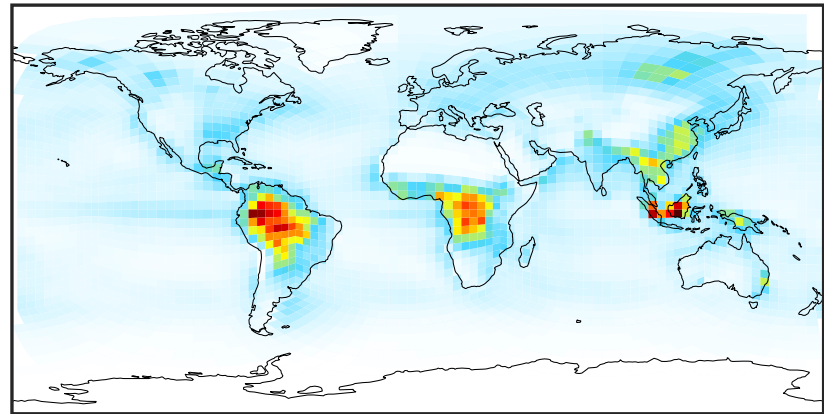
# SpeciesConcVW\_ALD2 (AnnualMean)

14.3.0-rc.0 (Ref)  
4.0x5.0



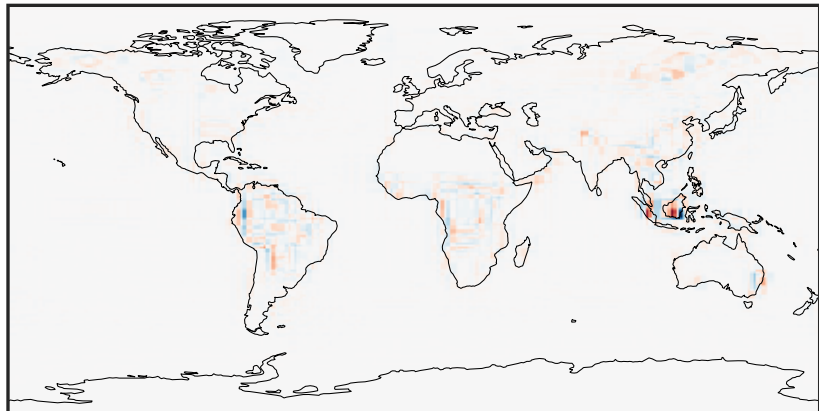
0.003 0.721 1.439 2.157 2.875  
ppb

14.3.0-rc.0 (Dev)  
c24



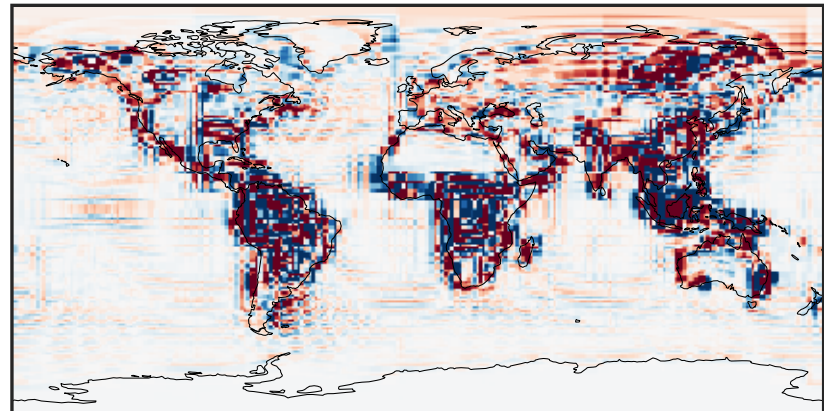
0.003 0.721 1.439 2.157 2.875  
ppb

Difference (1x1.25)  
Dev - Ref, Dynamic Range



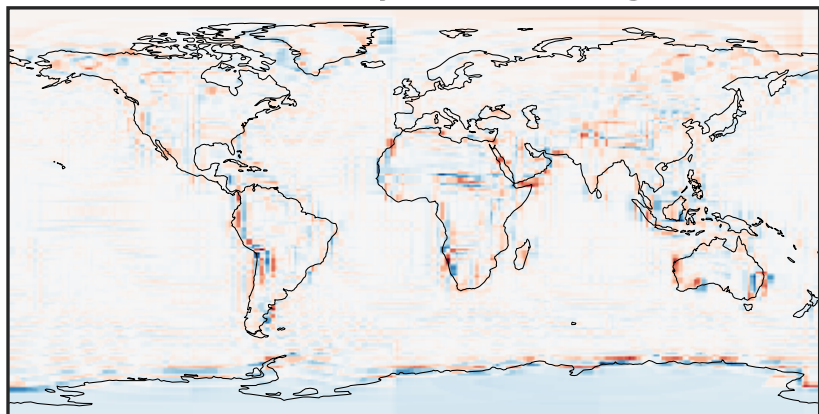
-1.797 -0.899 0.000 0.899 1.797  
ppb

Difference (1x1.25)  
Dev - Ref, Restricted Range [5%,95%]



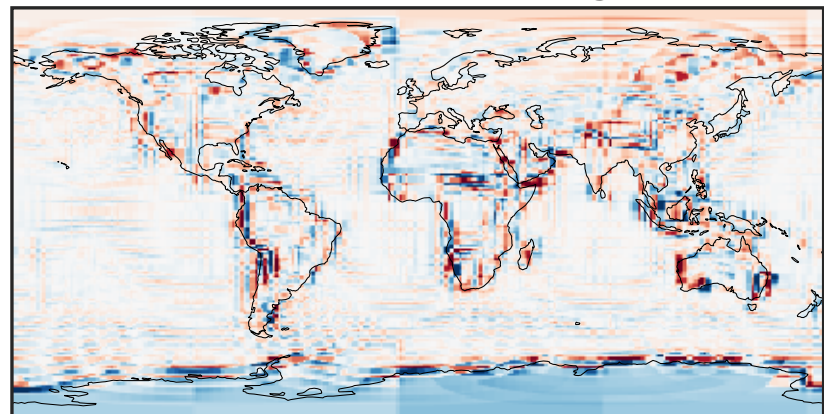
-0.0602 -0.0301 0.0000 0.0301 0.0602  
ppb

Ratio (1x1.25)  
Dev/Ref, Dynamic Range



0.213 0.607 1.000 2.844 4.687  
unitless

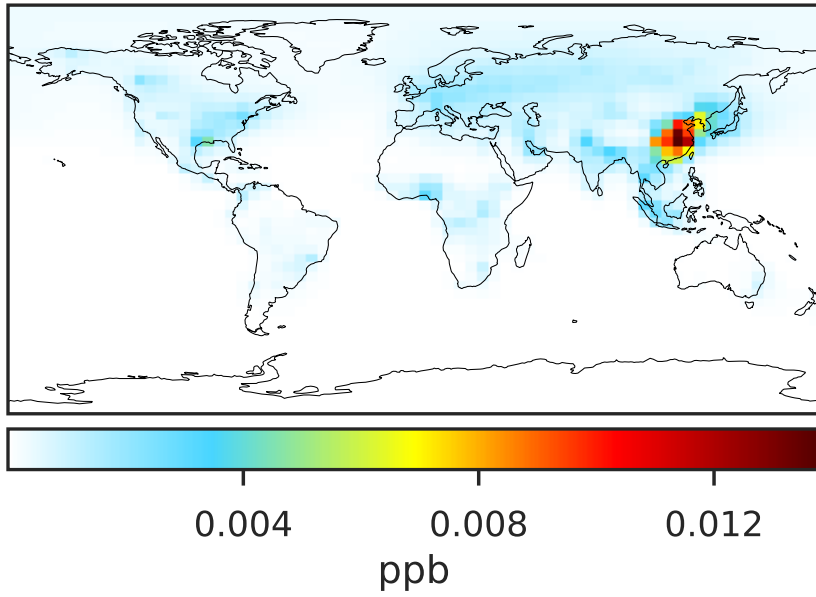
Ratio (1x1.25)  
Dev/Ref, Fixed Range



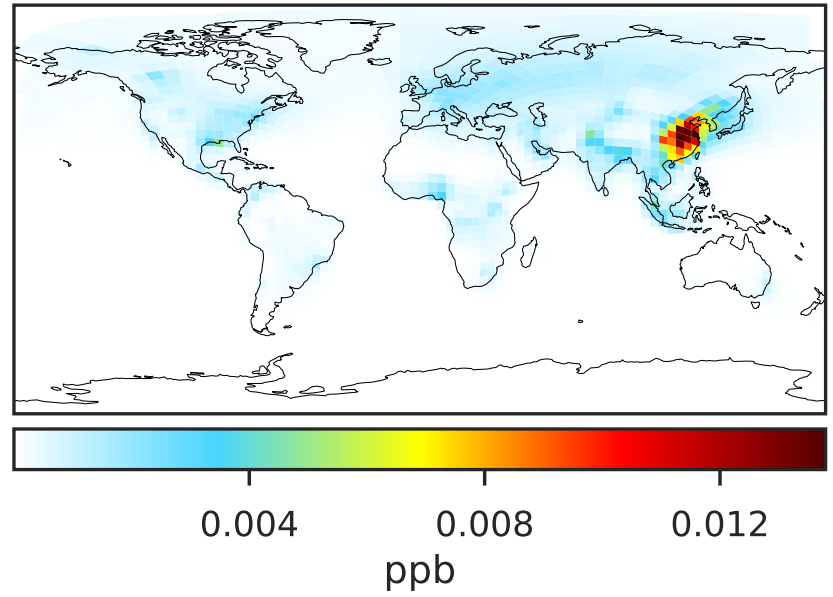
0.50 0.75 1.00 1.50 2.00  
unitless

# SpeciesConcVV\_BALD (AnnualMean)

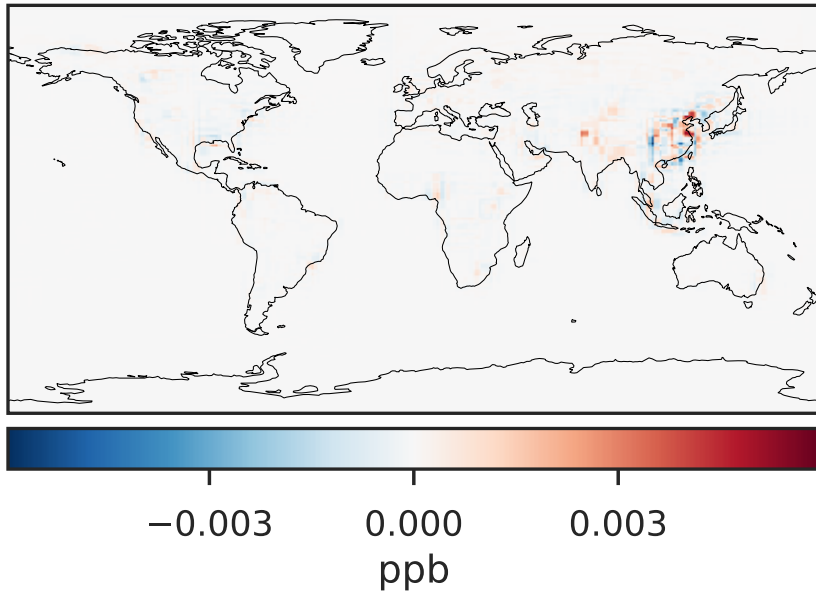
14.3.0-rc.0 (Ref)  
4.0x5.0



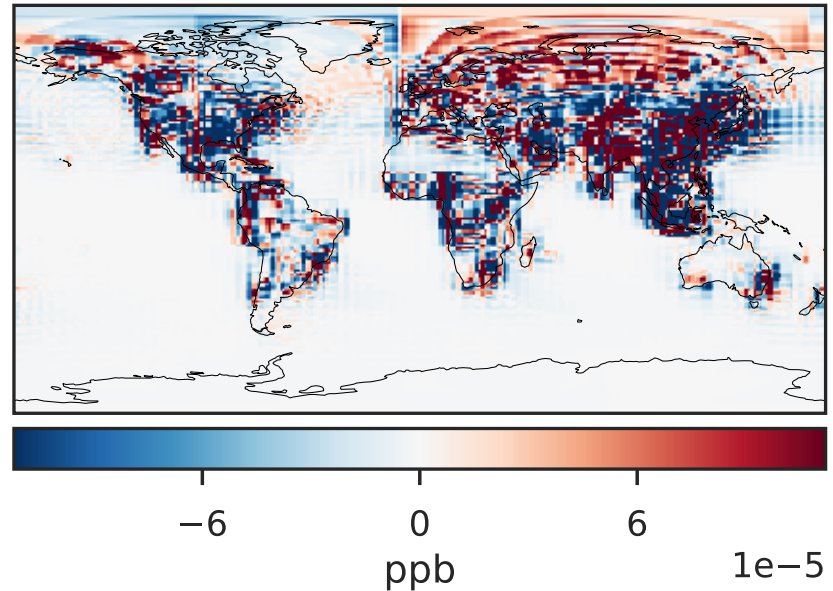
14.3.0-rc.0 (Dev)  
c24



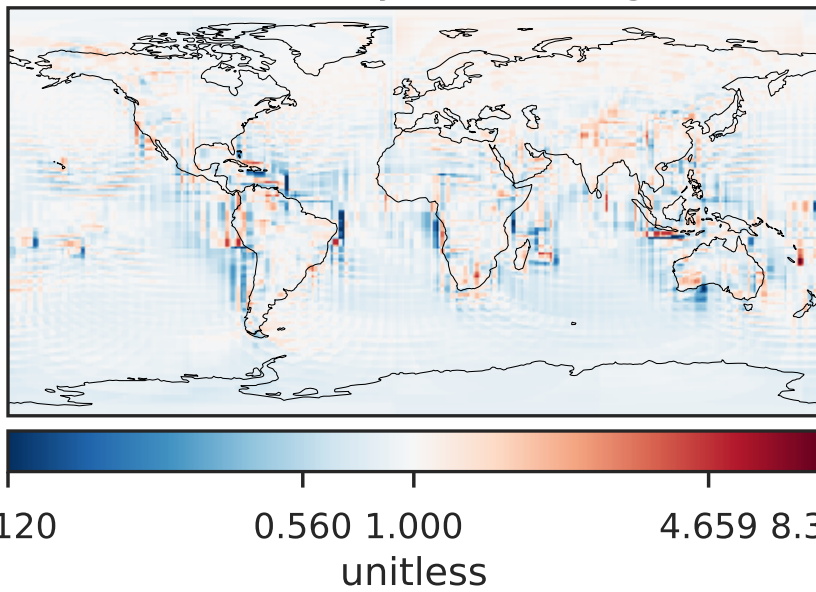
Difference (1x1.25)  
Dev - Ref, Dynamic Range



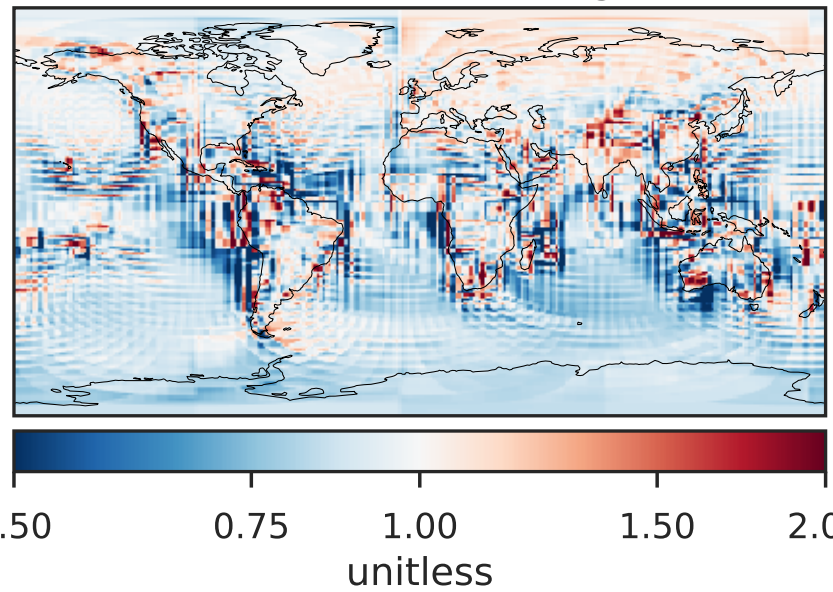
Difference (1x1.25)  
Dev - Ref, Restricted Range [5%,95%]



Ratio (1x1.25)  
Dev/Ref, Dynamic Range

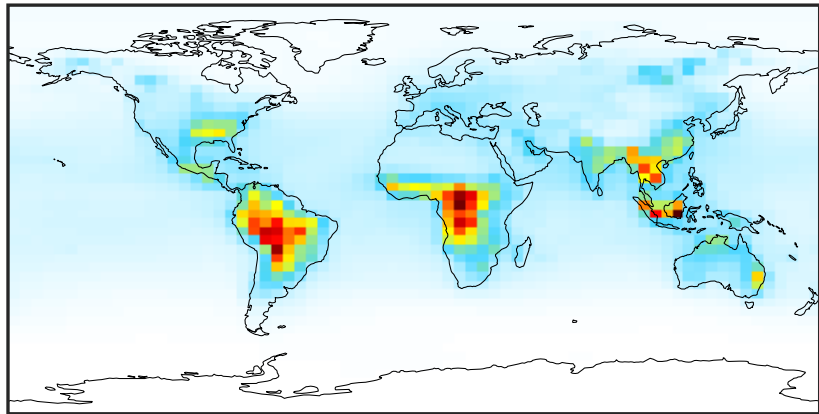


Ratio (1x1.25)  
Dev/Ref, Fixed Range



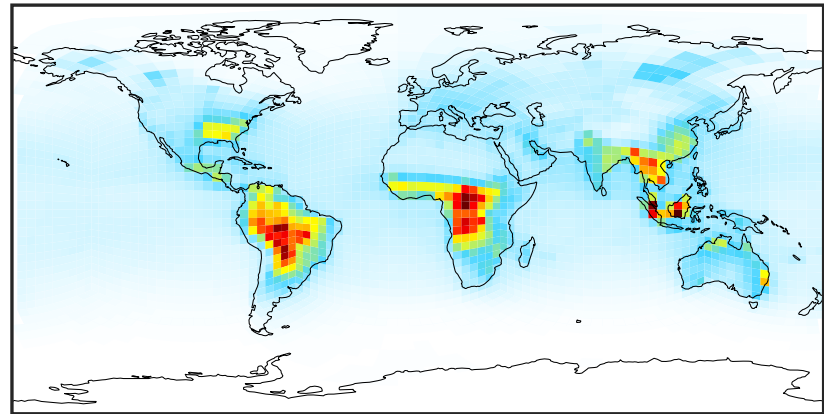
# SpeciesConcVV\_CH2O (AnnualMean)

14.3.0-rc.0 (Ref)  
4.0x5.0



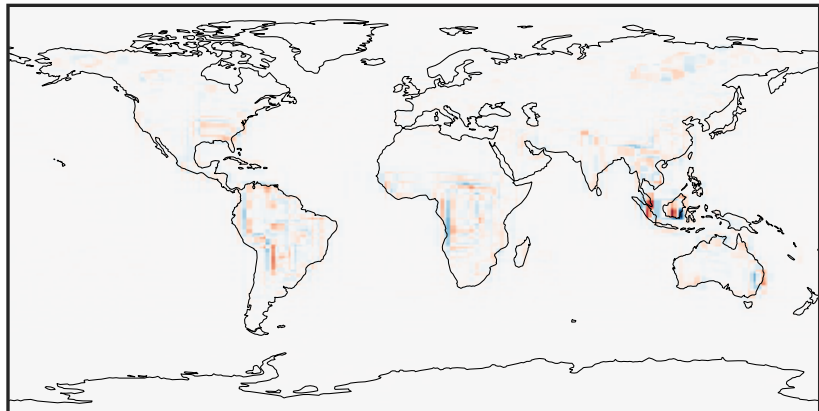
0.024 1.411 2.798 4.185 5.573  
ppb

14.3.0-rc.0 (Dev)  
c24



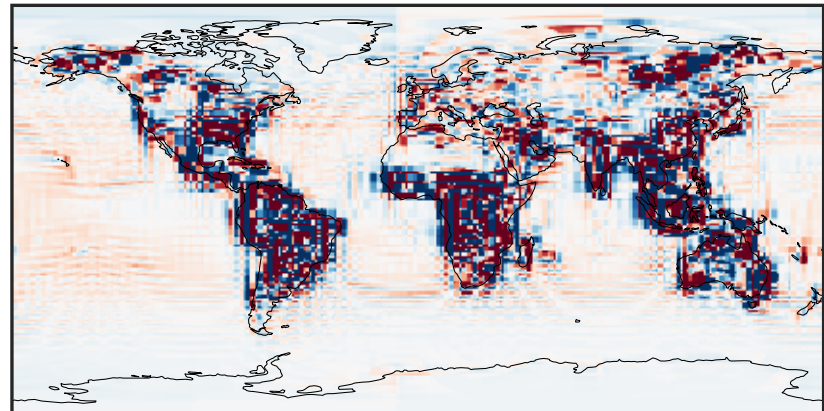
0.024 1.411 2.798 4.185 5.573  
ppb

Difference (1x1.25)  
Dev - Ref, Dynamic Range



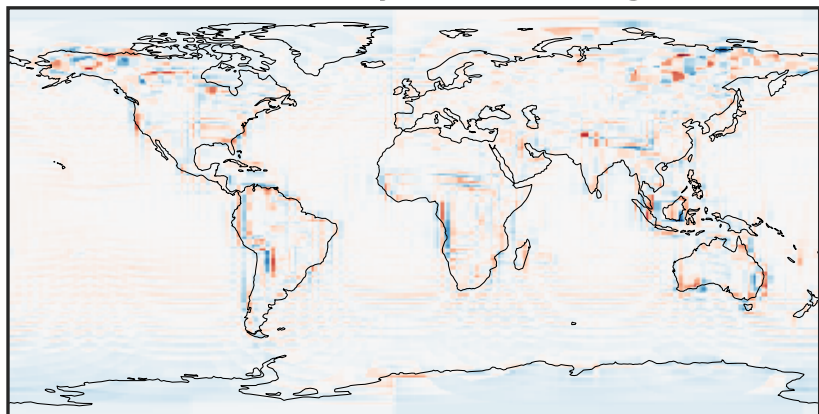
-3.4 -1.7 0.0 1.7 3.4  
ppb

Difference (1x1.25)  
Dev - Ref, Restricted Range [5%,95%]



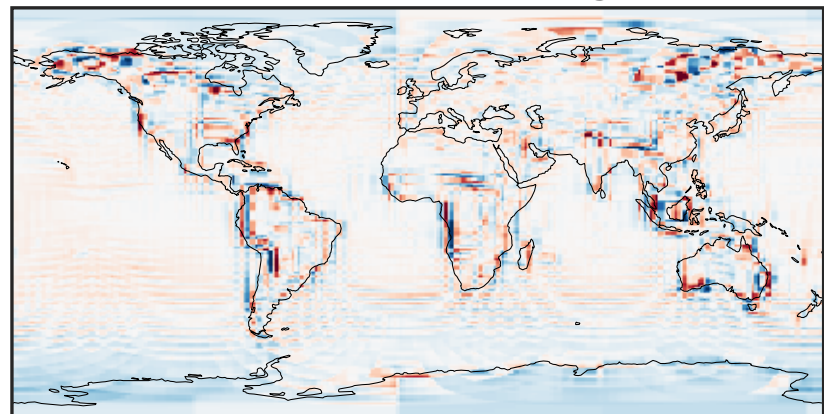
-0.0995 -0.0498 0.0000 0.0498 0.0995  
ppb

Ratio (1x1.25)  
Dev/Ref, Dynamic Range



0.277 0.639 1.000 2.303 3.606  
unitless

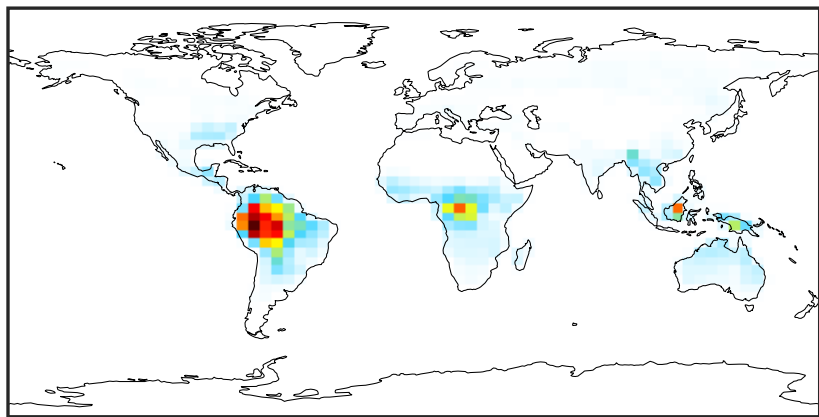
Ratio (1x1.25)  
Dev/Ref, Fixed Range



0.50 0.75 1.00 1.50 2.00  
unitless

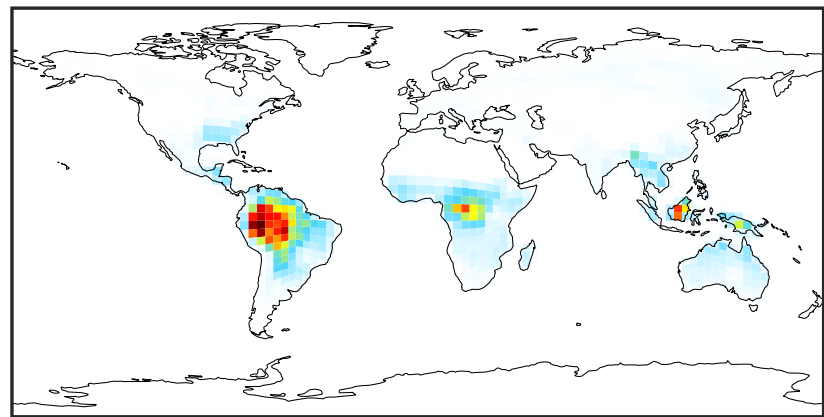
# SpeciesConcVV\_HPALDs (AnnualMean)

14.3.0-rc.0 (Ref)  
4.0x5.0



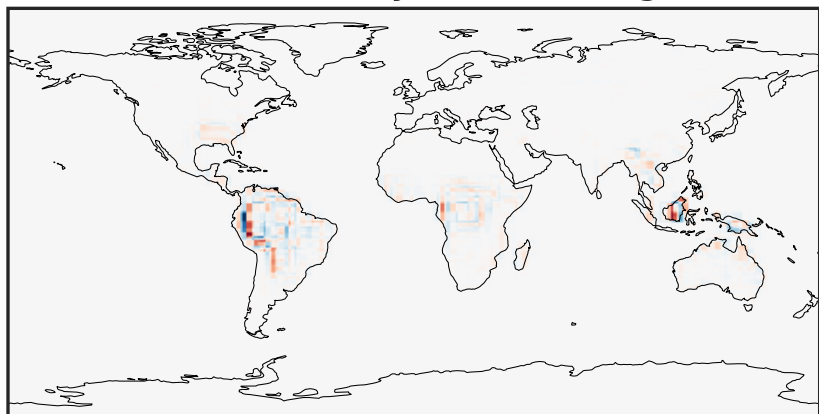
0.0000 0.0794 0.1588 0.2382 0.3177  
ppb

14.3.0-rc.0 (Dev)  
c24



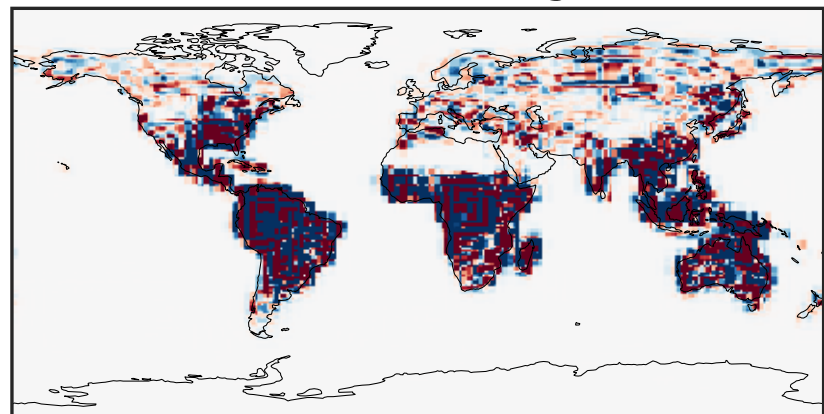
0.0000 0.0794 0.1588 0.2382 0.3177  
ppb

Difference (1x1.25)  
Dev - Ref, Dynamic Range



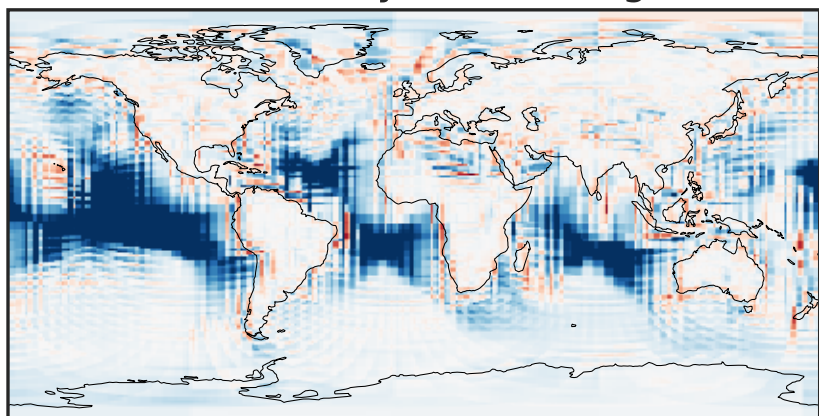
-0.1442 -0.0721 0.0000 0.0721 0.1442  
ppb

Difference (1x1.25)  
Dev - Ref, Restricted Range [5%,95%]



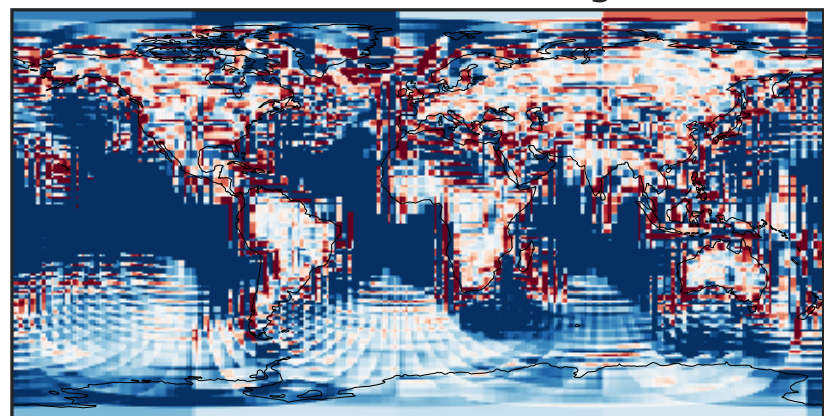
-0.0006 0.0000 0.0006  
ppb

Ratio (1x1.25)  
Dev/Ref, Dynamic Range



1e-01 1 10  
unitless

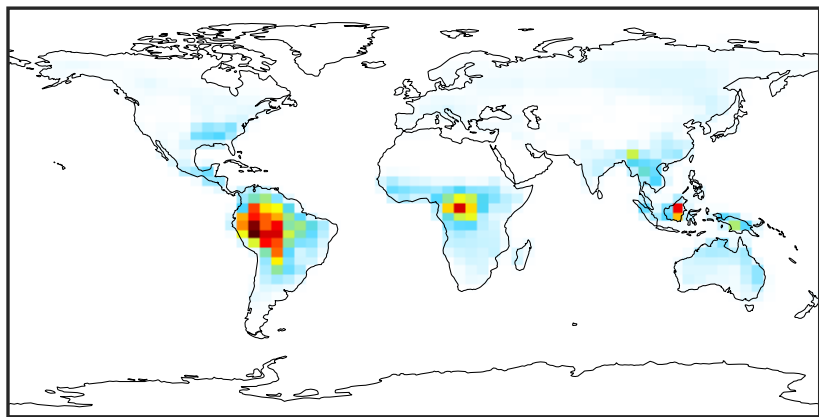
Ratio (1x1.25)  
Dev/Ref, Fixed Range



0.50 0.75 1.00 1.50 2.00  
unitless

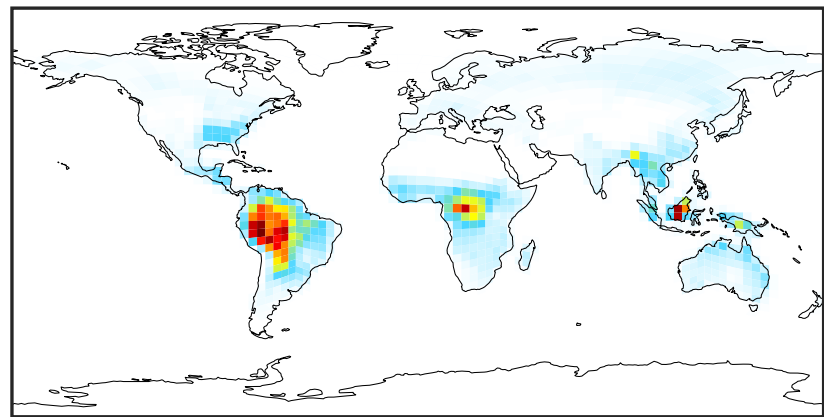
# SpeciesConcVV\_MACR (AnnualMean)

14.3.0-rc.0 (Ref)  
4.0x5.0



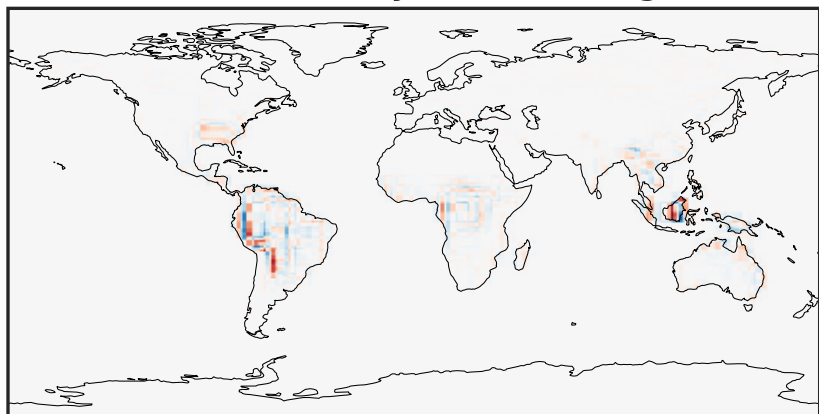
0.000 0.292 0.583 0.875 1.166  
ppb

14.3.0-rc.0 (Dev)  
c24



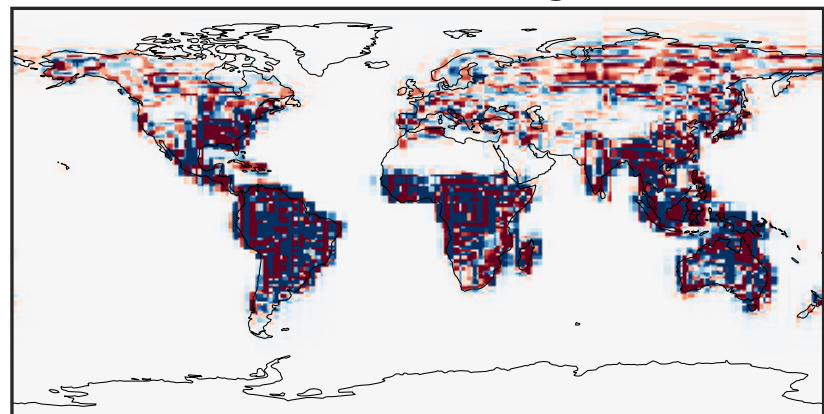
0.000 0.292 0.583 0.875 1.166  
ppb

Difference (1x1.25)  
Dev - Ref, Dynamic Range



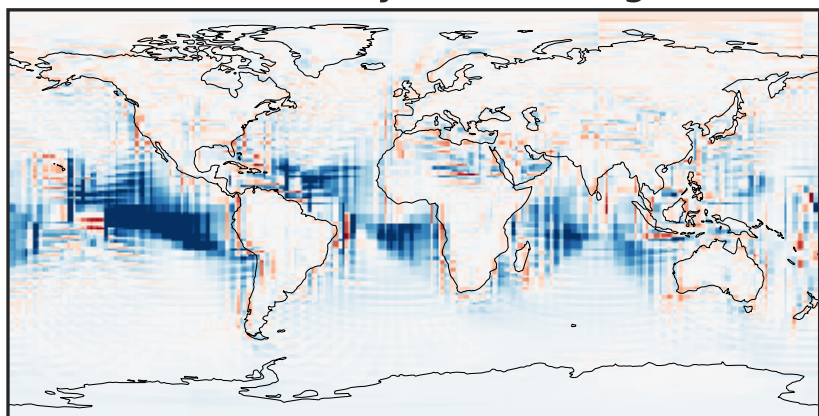
-0.546 -0.273 0.000 0.273 0.546  
ppb

Difference (1x1.25)  
Dev - Ref, Restricted Range [5%,95%]



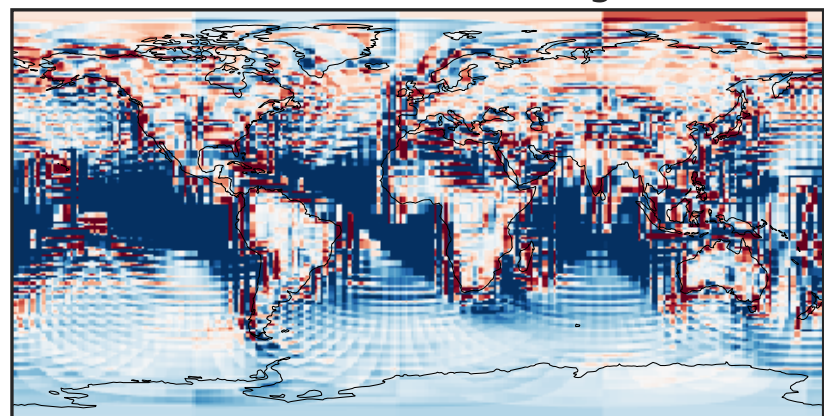
-0.004 0.000 0.004  
ppb

Ratio (1x1.25)  
Dev/Ref, Dynamic Range



1e-01 1 10  
unitless

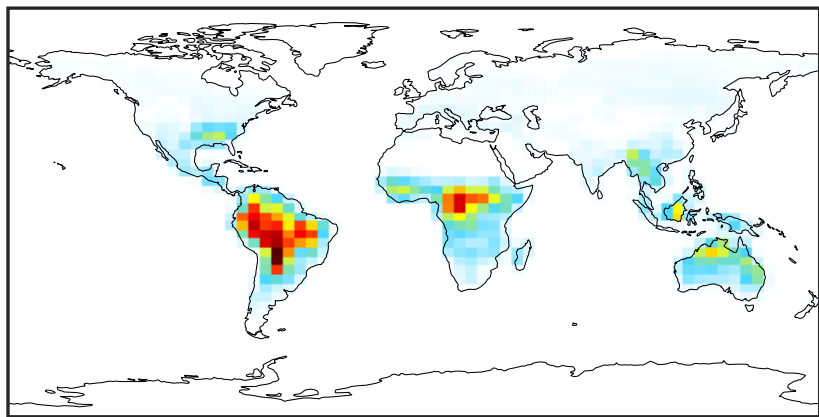
Ratio (1x1.25)  
Dev/Ref, Fixed Range



0.50 0.75 1.00 1.50 2.00  
unitless

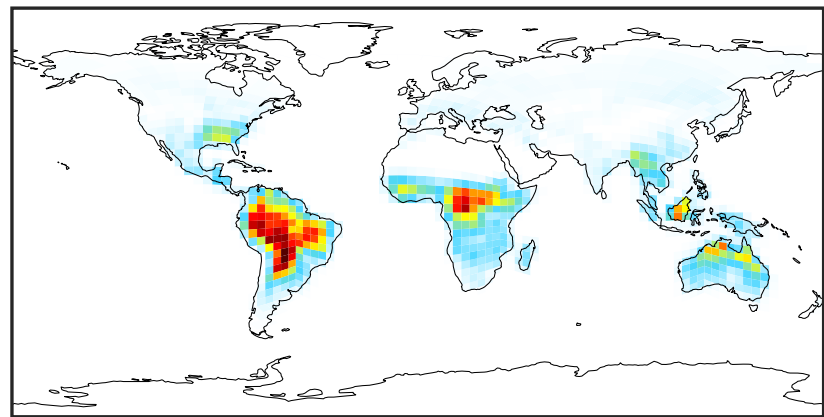
# SpeciesConcVV\_IEPOX (AnnualMean)

14.3.0-rc.0 (Ref)  
4.0x5.0



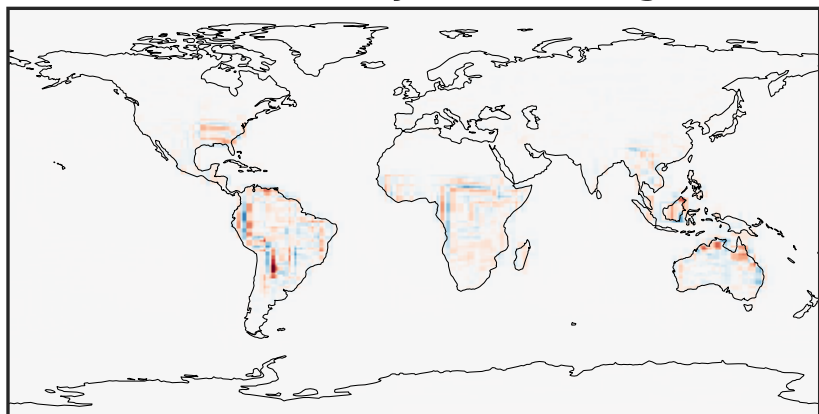
0.0000 0.1965 0.3930 0.5895 0.7860  
ppb

14.3.0-rc.0 (Dev)  
c24



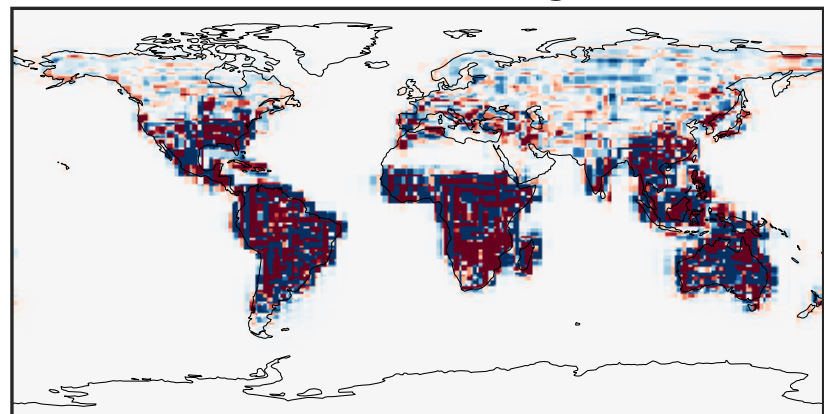
0.0000 0.1965 0.3930 0.5895 0.7860  
ppb

Difference (1x1.25)  
Dev - Ref, Dynamic Range



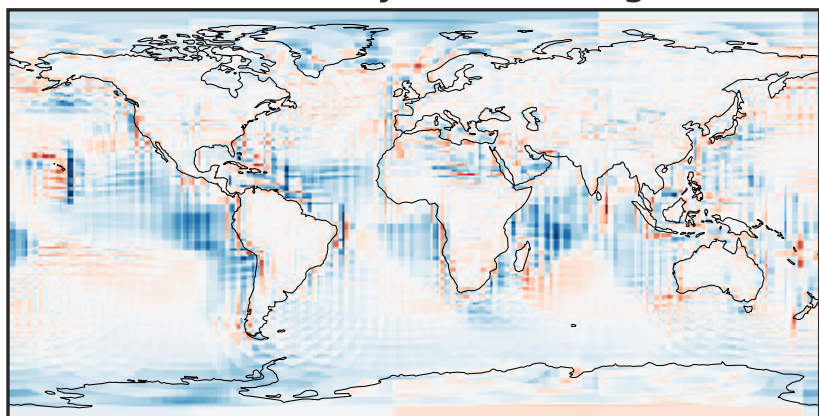
-0.3997 -0.1998 0.0000 0.1998 0.3997  
ppb

Difference (1x1.25)  
Dev - Ref, Restricted Range [5%,95%]



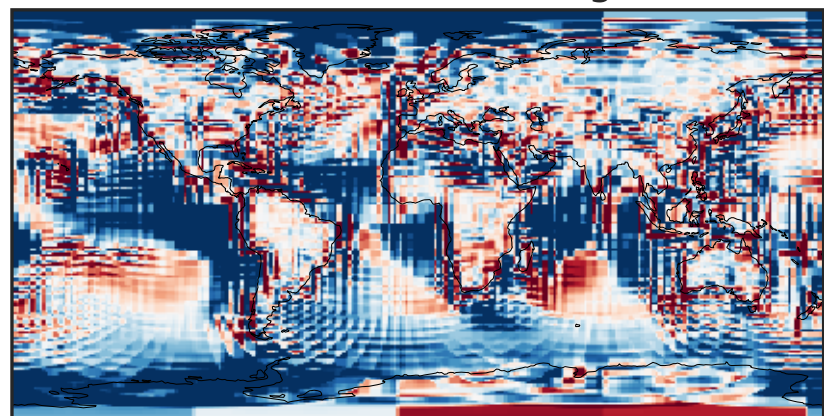
-0.004 0.000 0.004  
ppb

Ratio (1x1.25)  
Dev/Ref, Dynamic Range



1e-01 1 10  
unitless

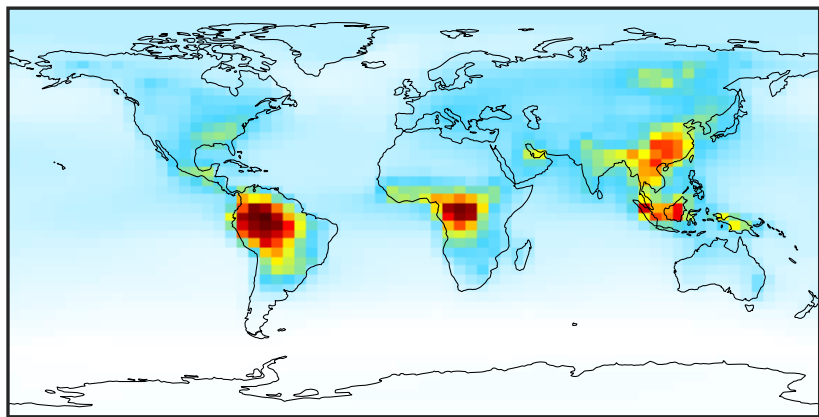
Ratio (1x1.25)  
Dev/Ref, Fixed Range



0.50 0.75 1.00 1.50 2.00  
unitless

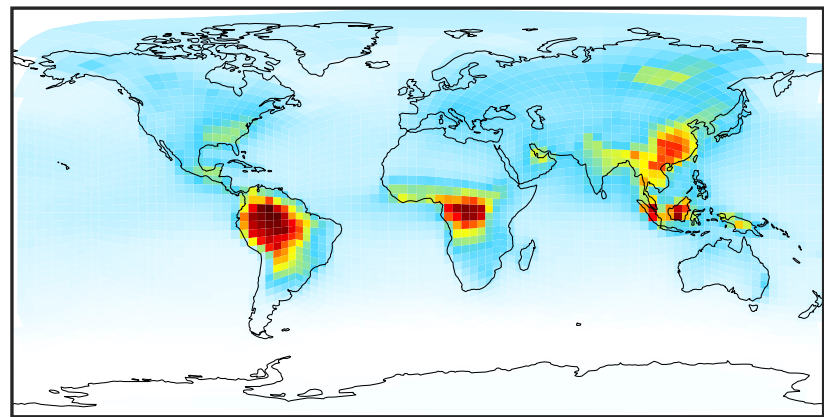
# SpeciesConcVV\_ACET (AnnualMean)

14.3.0-rc.0 (Ref)  
4.0x5.0



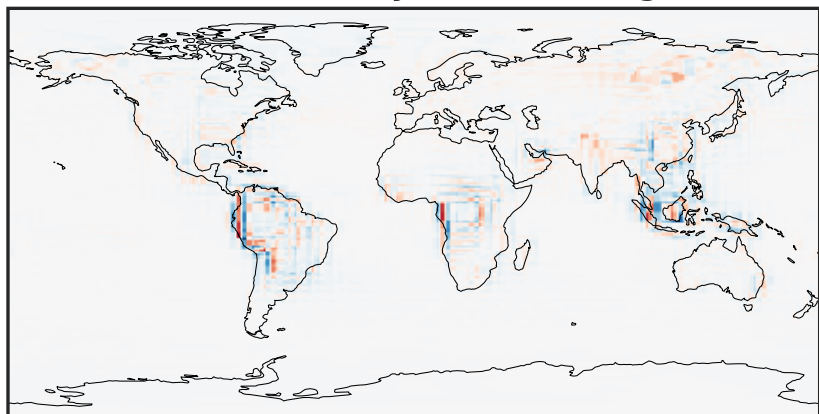
0.139 1.496 2.854 4.212 5.569  
ppb

14.3.0-rc.0 (Dev)  
c24



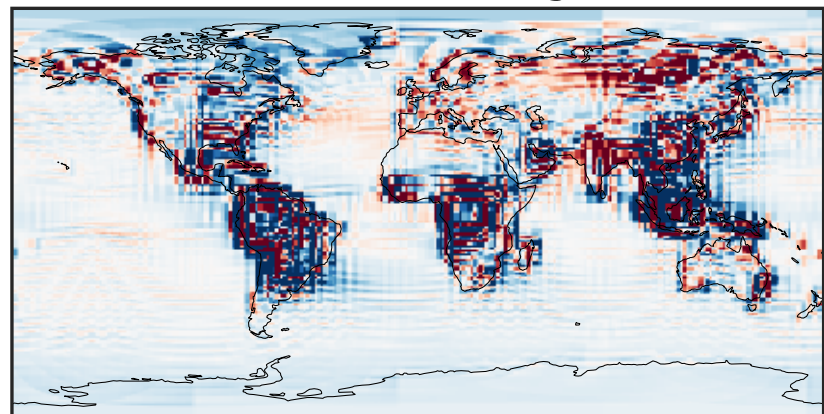
0.139 1.496 2.854 4.212 5.569  
ppb

Difference (1x1.25)  
Dev - Ref, Dynamic Range



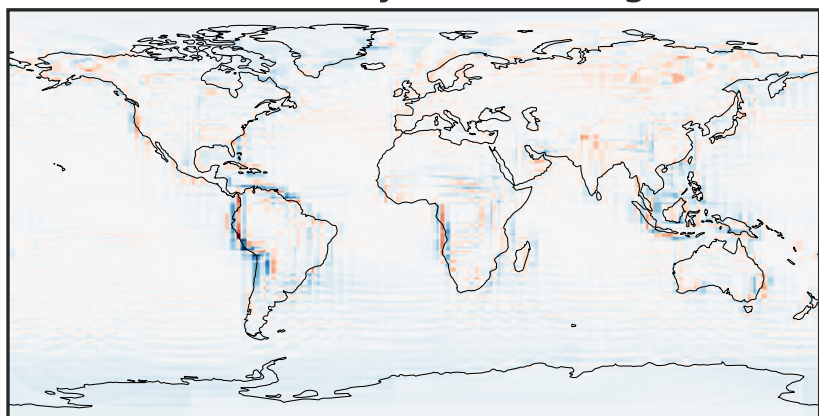
-1.867 -0.933 0.000 0.933 1.867  
ppb

Difference (1x1.25)  
Dev - Ref, Restricted Range [5%,95%]



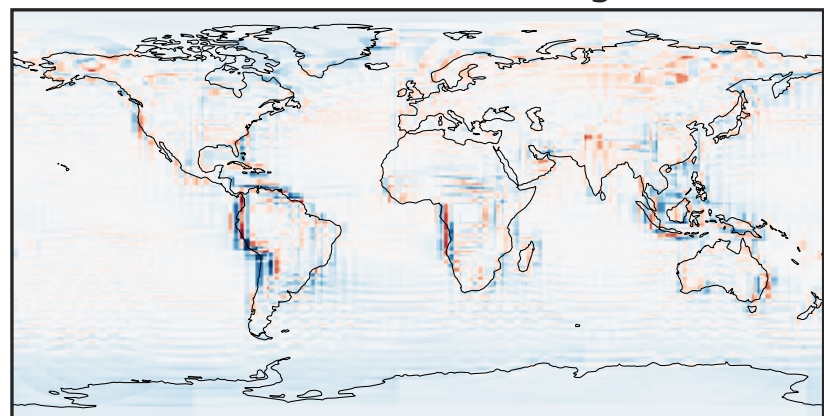
-0.118 -0.059 0.000 0.059 0.118  
ppb

Ratio (1x1.25)  
Dev/Ref, Dynamic Range



0.367 0.683 1.000 1.863 2.727  
unitless

Ratio (1x1.25)  
Dev/Ref, Fixed Range

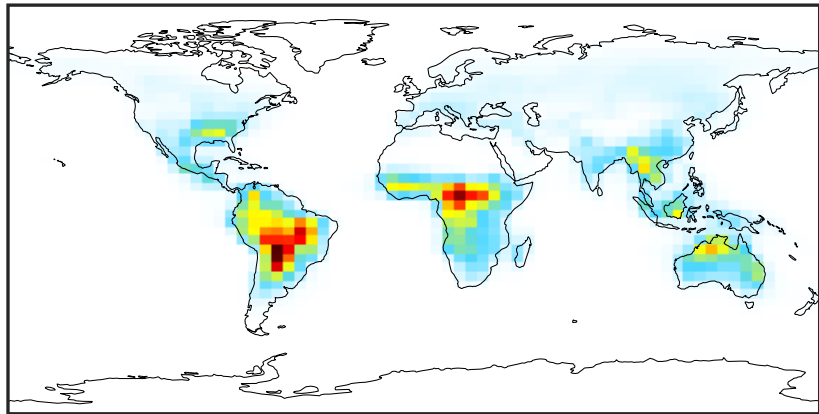


0.50 0.75 1.00 1.50 2.00  
unitless



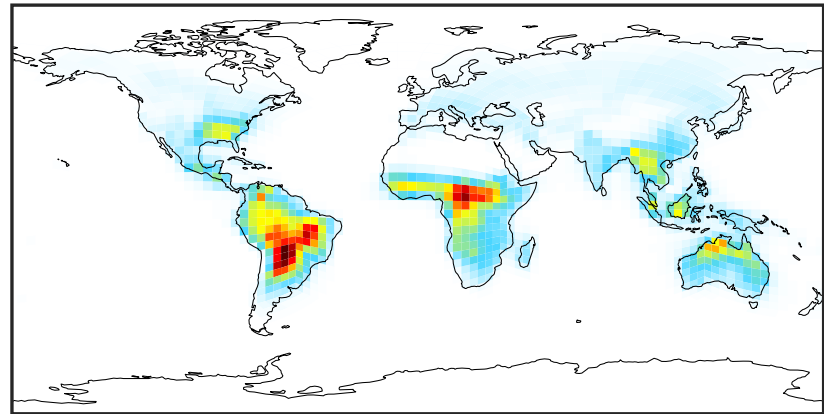
# SpeciesConcVV\_HAC (AnnualMean)

14.3.0-rc.0 (Ref)  
4.0x5.0



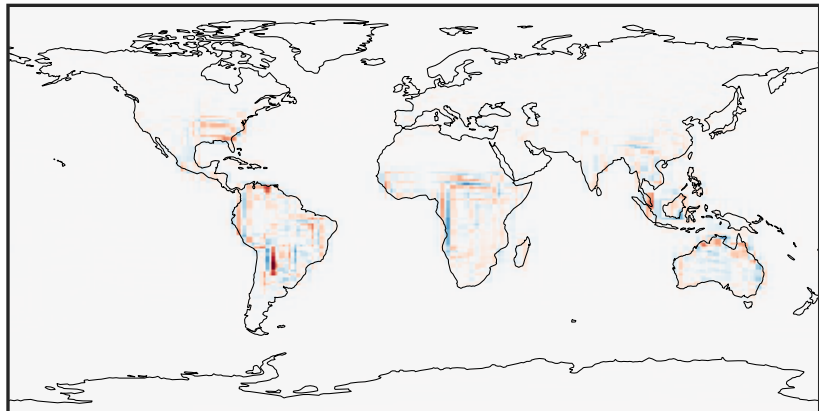
0.0000 0.1752 0.3505 0.5257 0.7009  
ppb

14.3.0-rc.0 (Dev)  
c24



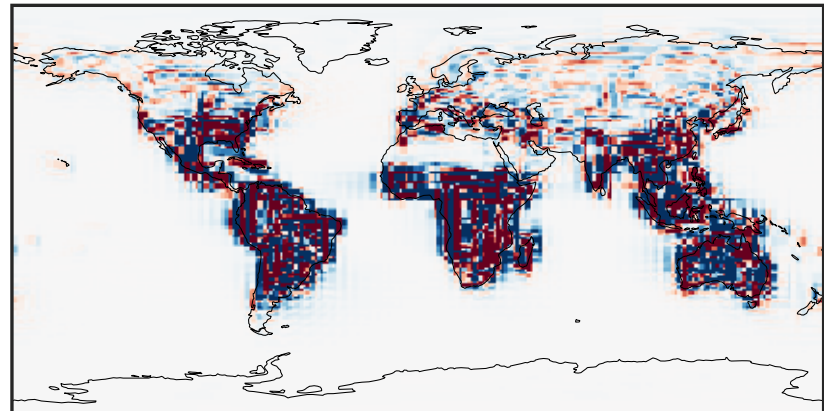
0.0000 0.1752 0.3505 0.5257 0.7009  
ppb

Difference (1x1.25)  
Dev - Ref, Dynamic Range



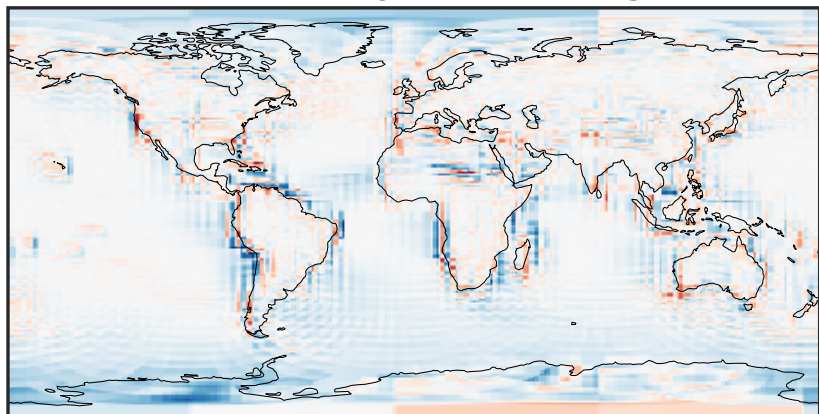
-0.3047 -0.1523 0.0000 0.1523 0.3047  
ppb

Difference (1x1.25)  
Dev - Ref, Restricted Range [5%,95%]



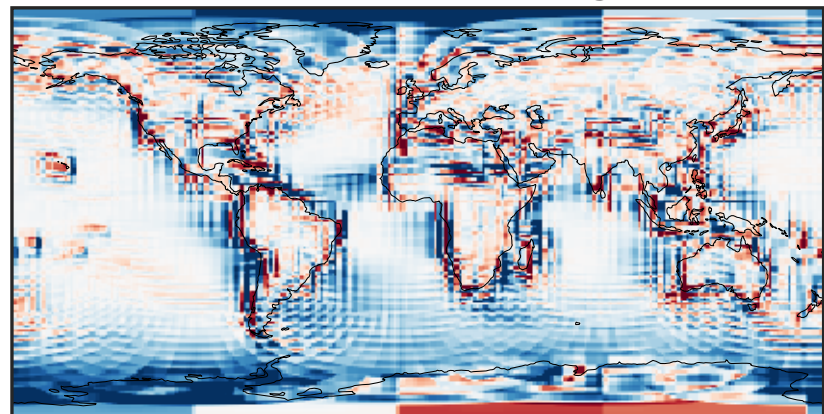
-0.005 0.000 0.005  
ppb

Ratio (1x1.25)  
Dev/Ref, Dynamic Range



0.113 0.556 1.000 4.935 8.869  
unitless

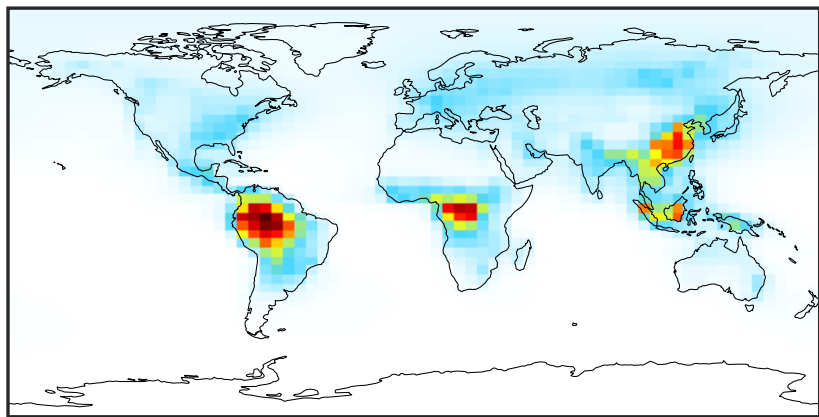
Ratio (1x1.25)  
Dev/Ref, Fixed Range



0.50 0.75 1.00 1.50 2.00  
unitless

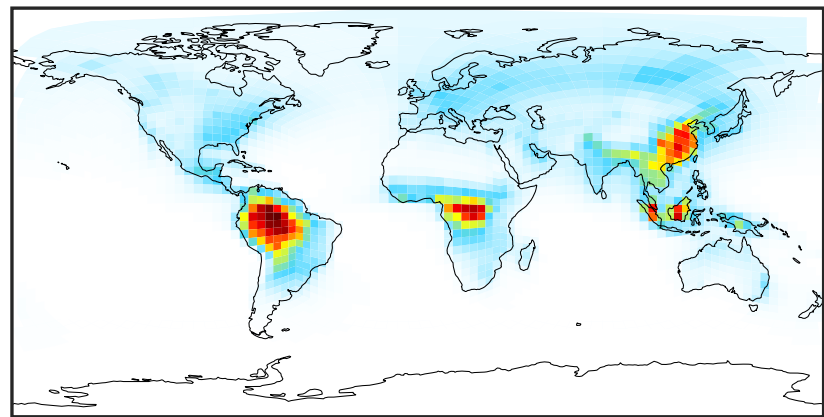
# SpeciesConcVW\_MEK (AnnualMean)

14.3.0-rc.0 (Ref)  
4.0x5.0



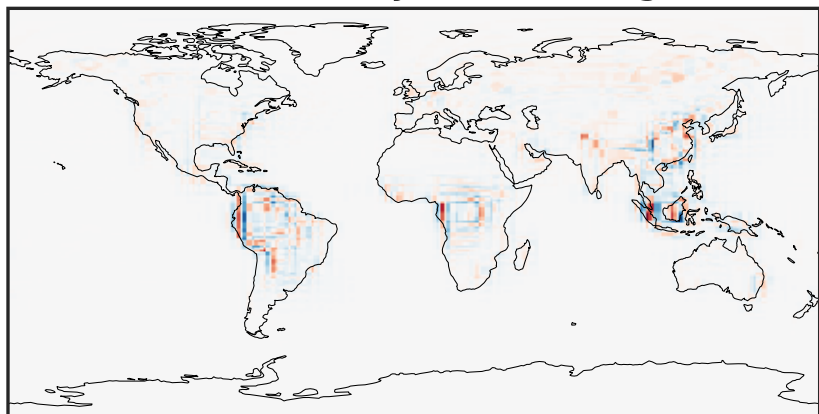
0.001 0.467 0.933 1.400 1.866  
ppb

14.3.0-rc.0 (Dev)  
c24



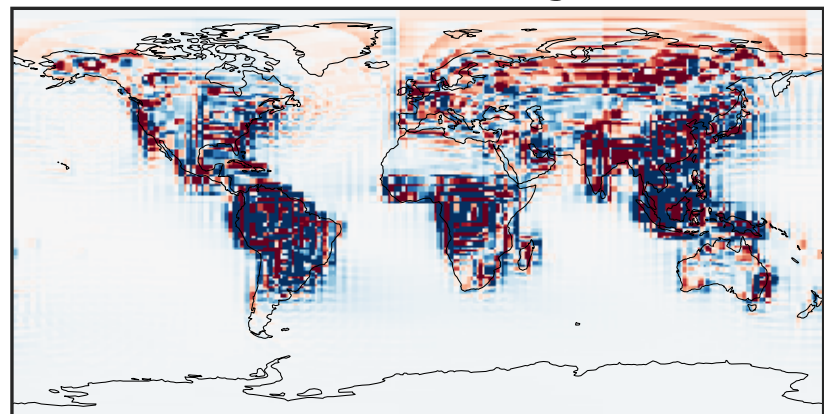
0.001 0.467 0.933 1.400 1.866  
ppb

Difference (1x1.25)  
Dev - Ref, Dynamic Range



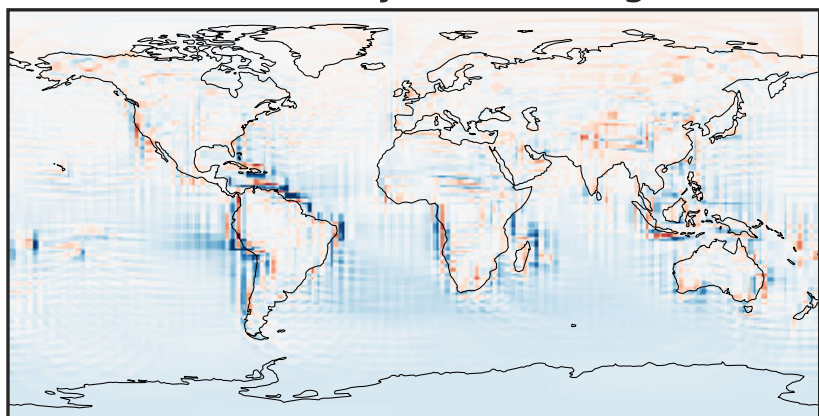
-0.652 -0.326 0.000 0.326 0.652  
ppb

Difference (1x1.25)  
Dev - Ref, Restricted Range [5%,95%]



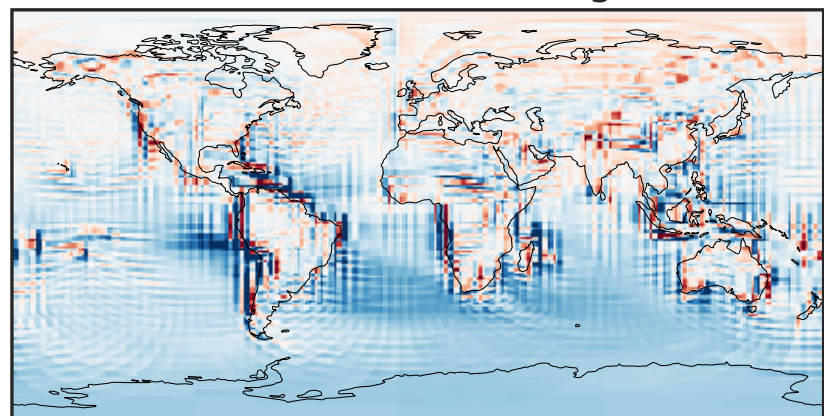
-0.02 0.00 0.02  
ppb

Ratio (1x1.25)  
Dev/Ref, Dynamic Range



0.218 0.609 1.000 2.790 4.579  
unitless

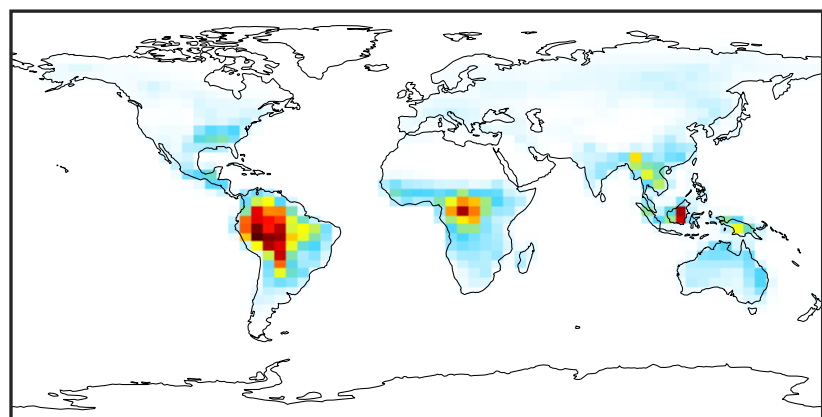
Ratio (1x1.25)  
Dev/Ref, Fixed Range



0.50 0.75 1.00 1.50 2.00  
unitless

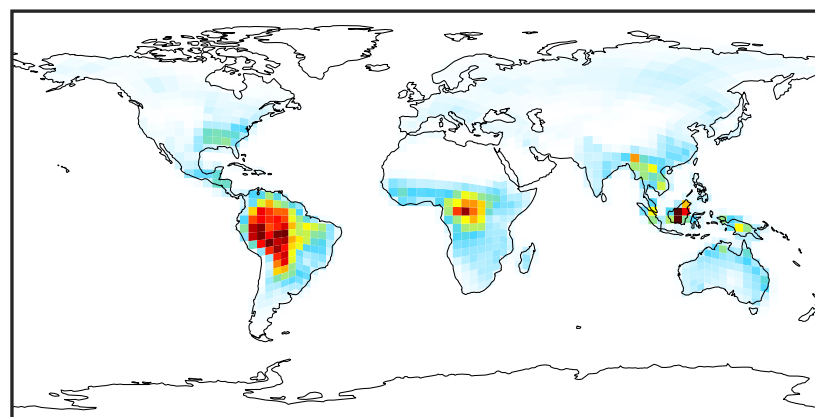
# SpeciesConcVW\_MVK (AnnualMean)

14.3.0-rc.0 (Ref)  
4.0x5.0



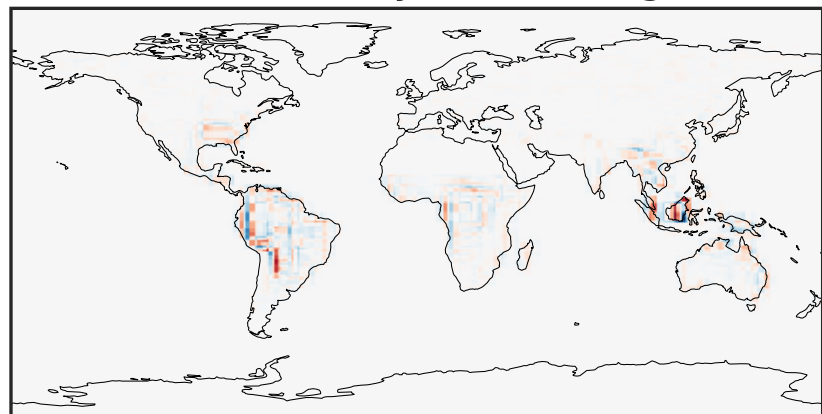
0.000 0.409 0.818 1.227 1.635  
ppb

14.3.0-rc.0 (Dev)  
c24



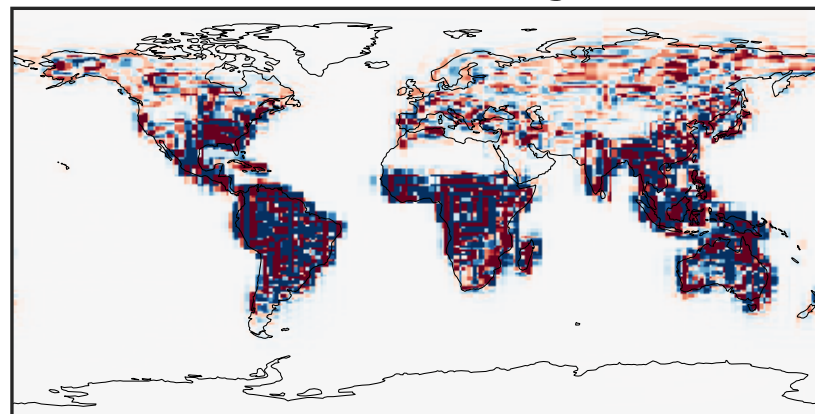
0.000 0.409 0.818 1.227 1.635  
ppb

Difference (1x1.25)  
Dev - Ref, Dynamic Range



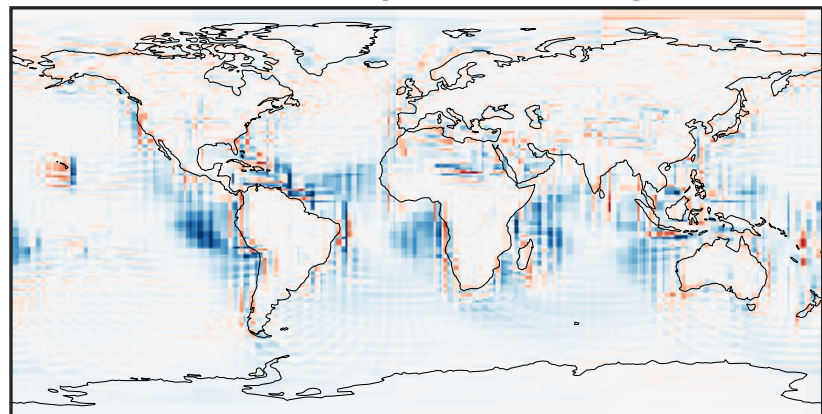
-0.849 -0.424 0.000 0.424 0.849  
ppb

Difference (1x1.25)  
Dev - Ref, Restricted Range [5%,95%]



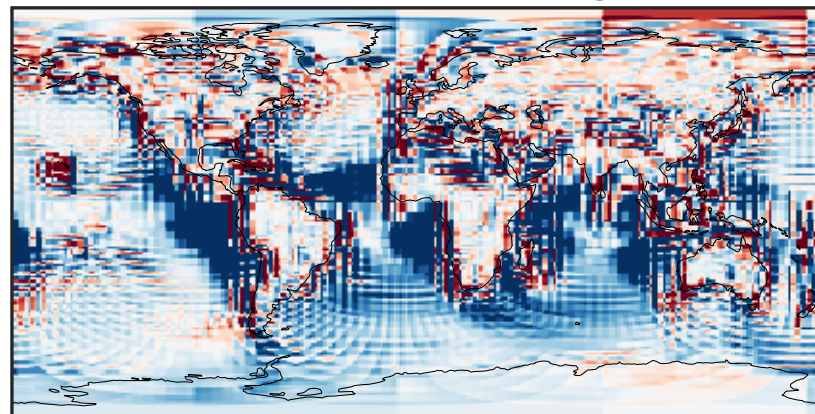
-0.01 0.00 0.01  
ppb

Ratio (1x1.25)  
Dev/Ref, Dynamic Range



1e-01 1 10  
unitless

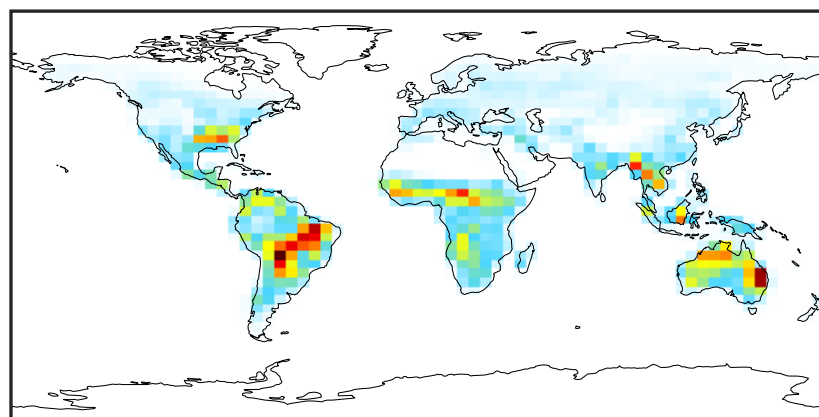
Ratio (1x1.25)  
Dev/Ref, Fixed Range



0.50 0.75 1.00 1.50 2.00  
unitless

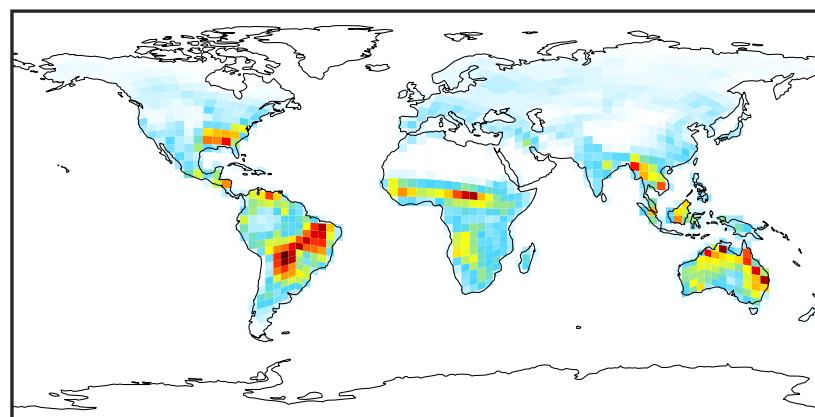
# SpeciesConcVV\_ISOPN (AnnualMean)

14.3.0-rc.0 (Ref)  
4.0x5.0



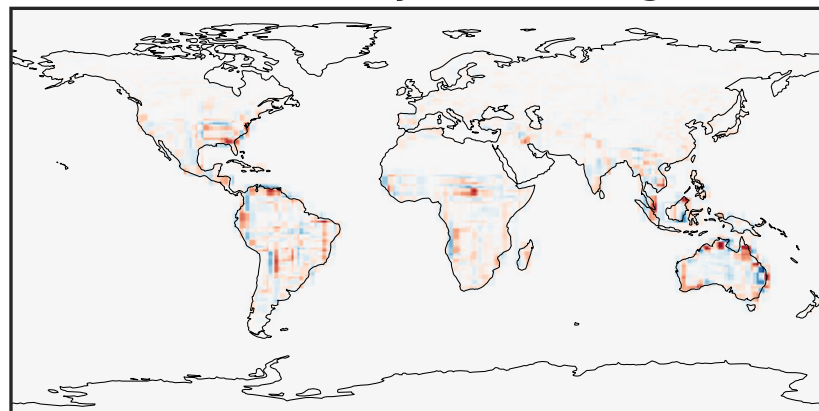
0.000 0.008 0.016 0.024  
ppb

14.3.0-rc.0 (Dev)  
c24



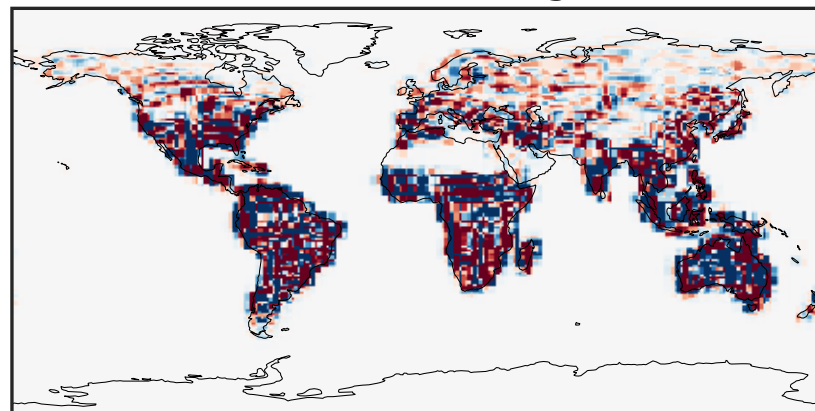
0.000 0.008 0.016 0.024  
ppb

Difference (1x1.25)  
Dev - Ref, Dynamic Range



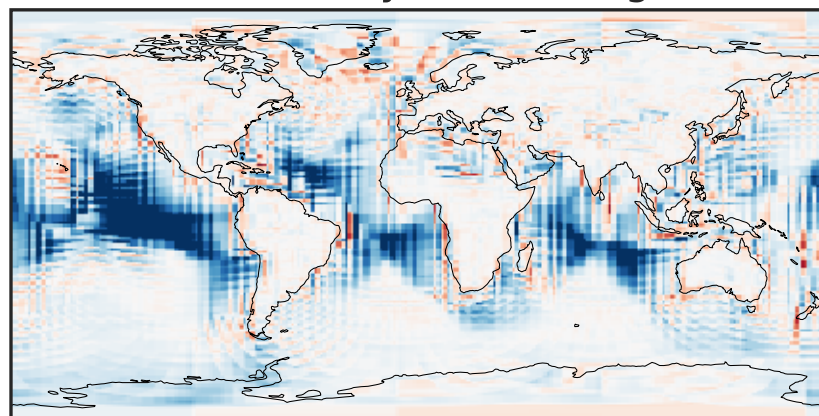
-0.008 0.000 0.008  
ppb

Difference (1x1.25)  
Dev - Ref, Restricted Range [5%,95%]



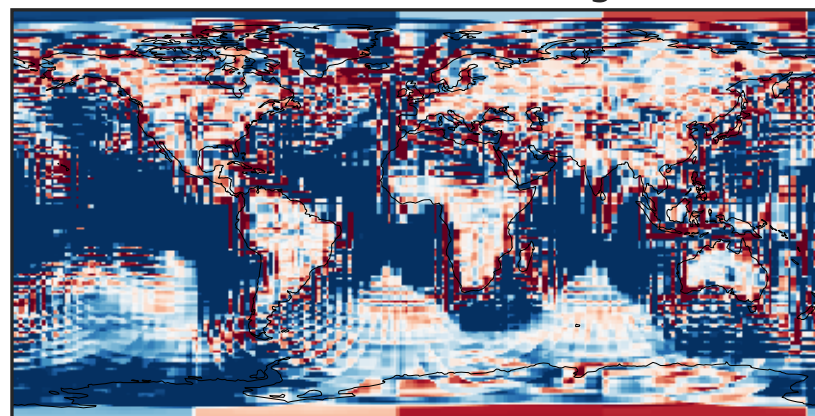
-0.0004 0.0000 0.0004  
ppb

Ratio (1x1.25)  
Dev/Ref, Dynamic Range



1e-02 1e-01 1 10 100  
unitless

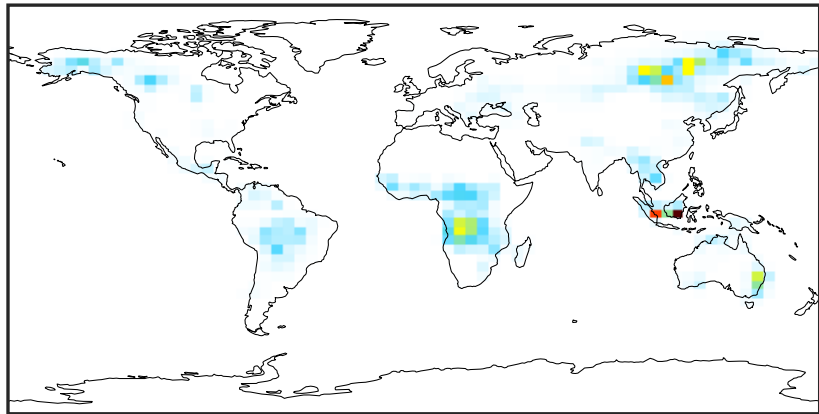
Ratio (1x1.25)  
Dev/Ref, Fixed Range



0.50 0.75 1.00 1.50 2.00  
unitless

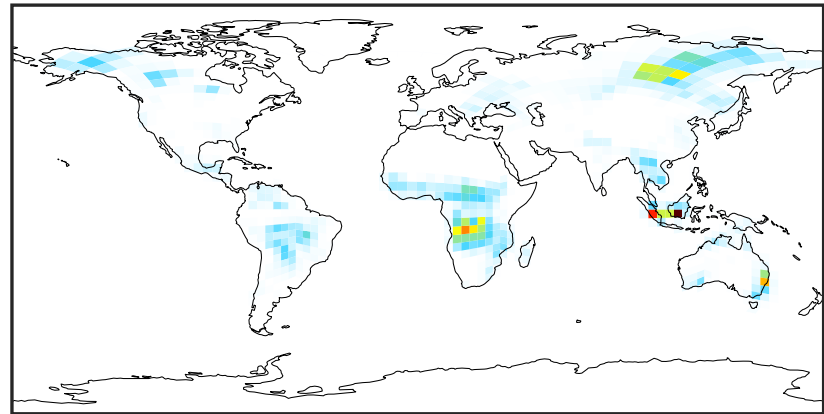
# SpeciesConcVW\_FURA (AnnualMean)

14.3.0-rc.0 (Ref)  
4.0x5.0



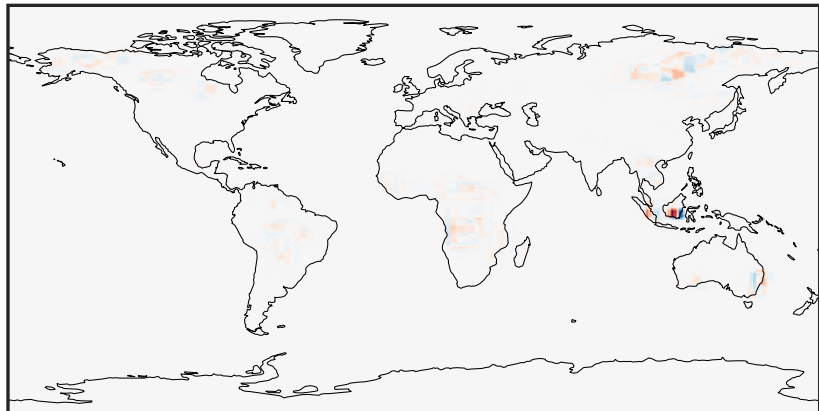
0.0000 0.1194 0.2388 0.3583 0.4777  
ppb

14.3.0-rc.0 (Dev)  
c24



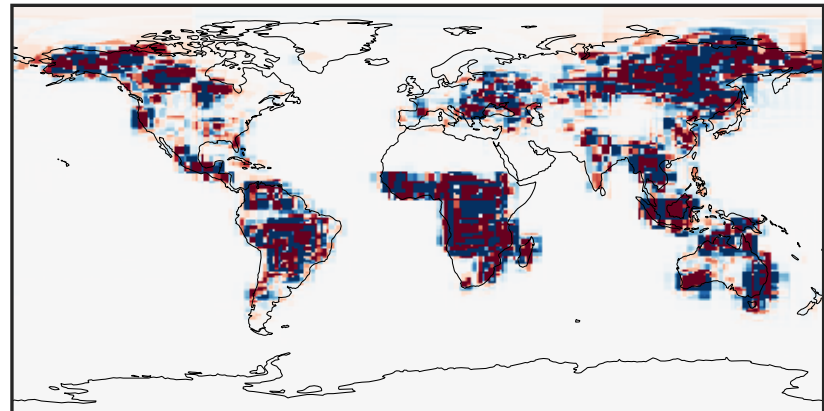
0.0000 0.1194 0.2388 0.3583 0.4777  
ppb

Difference (1x1.25)  
Dev - Ref, Dynamic Range



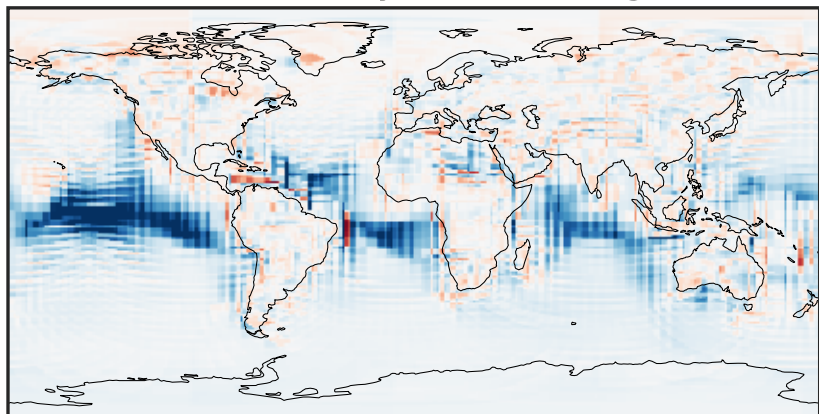
-0.572 -0.286 0.000 0.286 0.572  
ppb

Difference (1x1.25)  
Dev - Ref, Restricted Range [5%,95%]



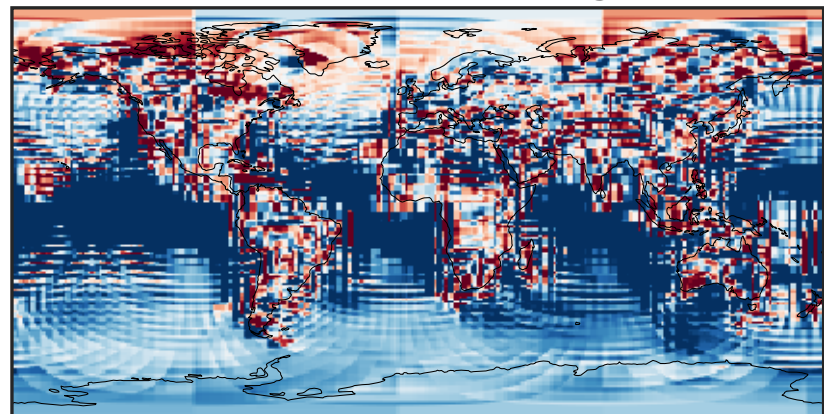
-0.0015 0.0000 0.0015  
ppb

Ratio (1x1.25)  
Dev/Ref, Dynamic Range



1e-02 1e-01 1 10 100  
unitless

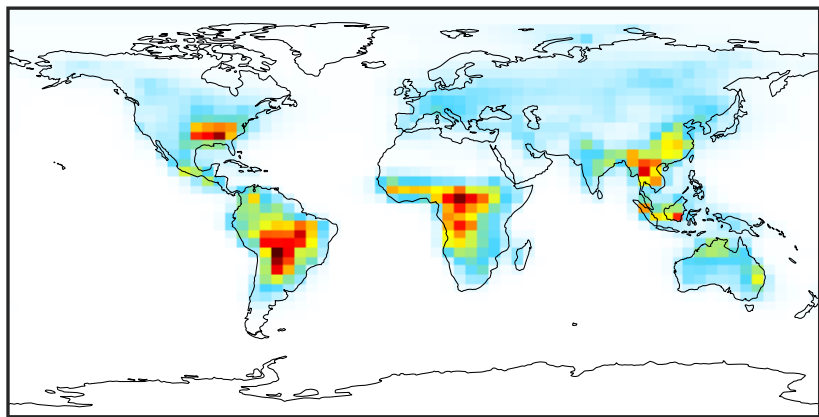
Ratio (1x1.25)  
Dev/Ref, Fixed Range



0.50 0.75 1.00 1.50 2.00  
unitless

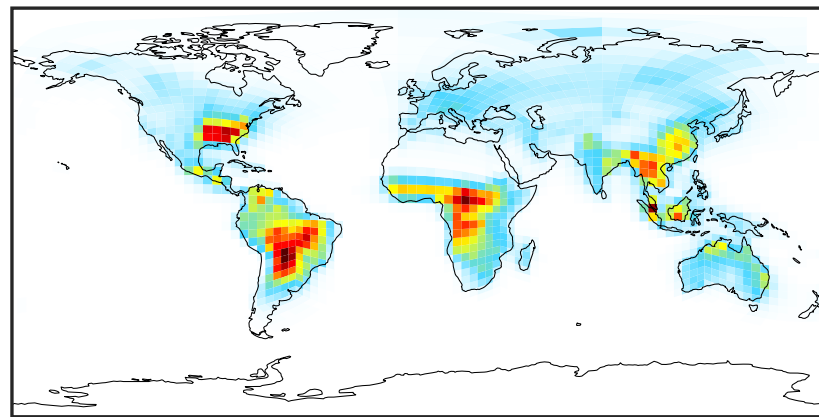
# SpeciesConcVV\_GLYC (AnnualMean)

14.3.0-rc.0 (Ref)  
4.0x5.0



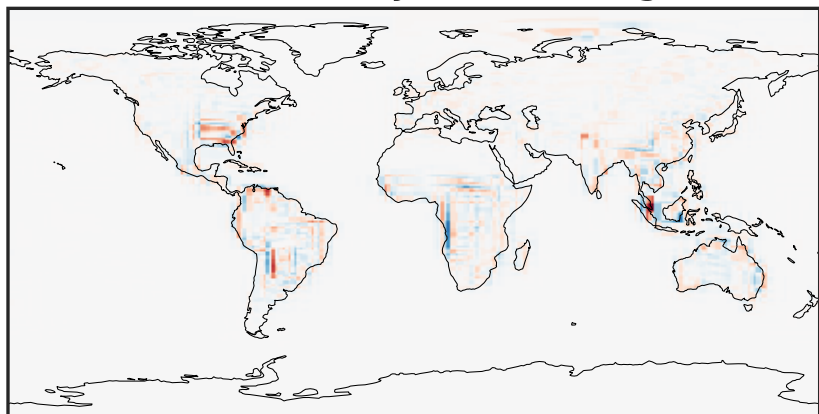
0.0000 0.1619 0.3239 0.4858 0.6477  
ppb

14.3.0-rc.0 (Dev)  
c24



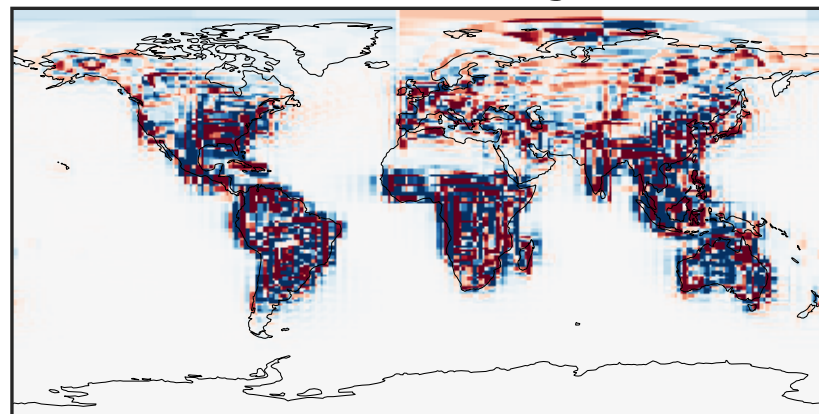
0.0000 0.1619 0.3239 0.4858 0.6477  
ppb

Difference (1x1.25)  
Dev - Ref, Dynamic Range



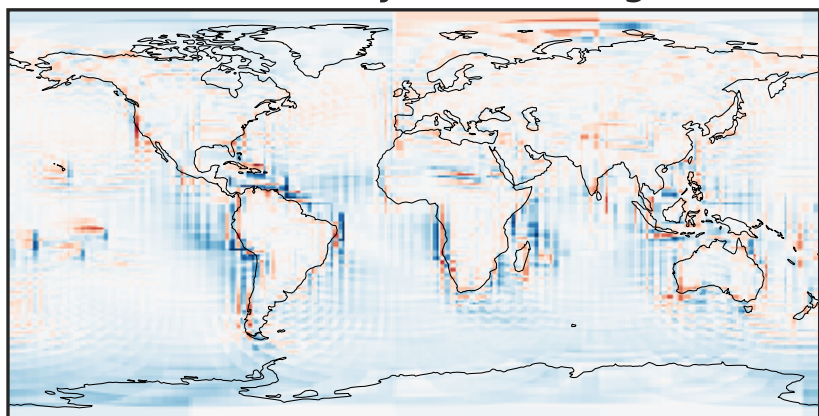
-0.3192 -0.1596 0.0000 0.1596 0.3192  
ppb

Difference (1x1.25)  
Dev - Ref, Restricted Range [5%,95%]



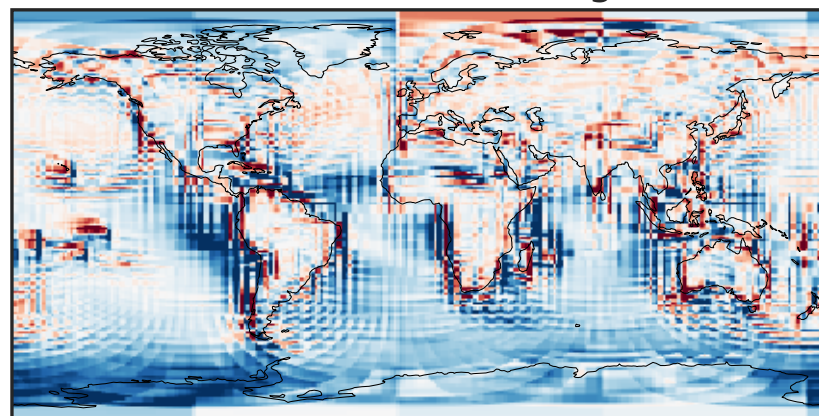
-0.008 0.000 0.008  
ppb

Ratio (1x1.25)  
Dev/Ref, Dynamic Range



0.115 0.557 1.000 4.861 8.721  
unitless

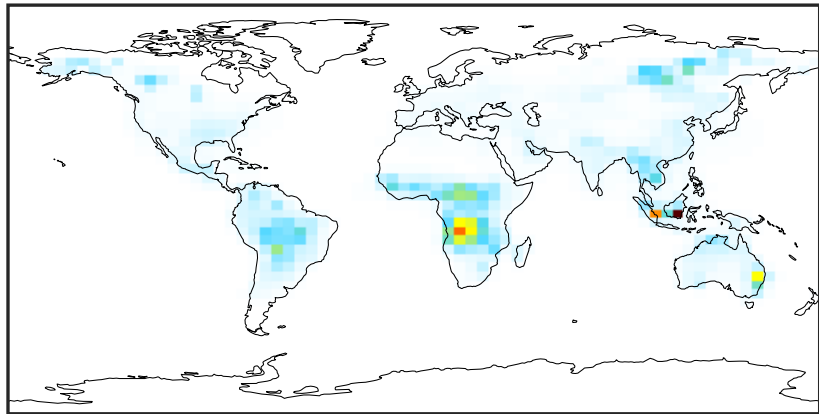
Ratio (1x1.25)  
Dev/Ref, Fixed Range



0.50 0.75 1.00 1.50 2.00  
unitless

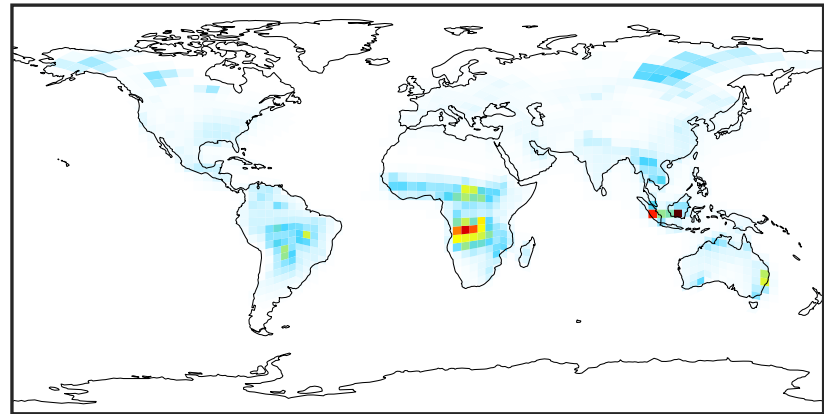
# SpeciesConcVV\_GLYX (AnnualMean)

14.3.0-rc.0 (Ref)  
4.0x5.0



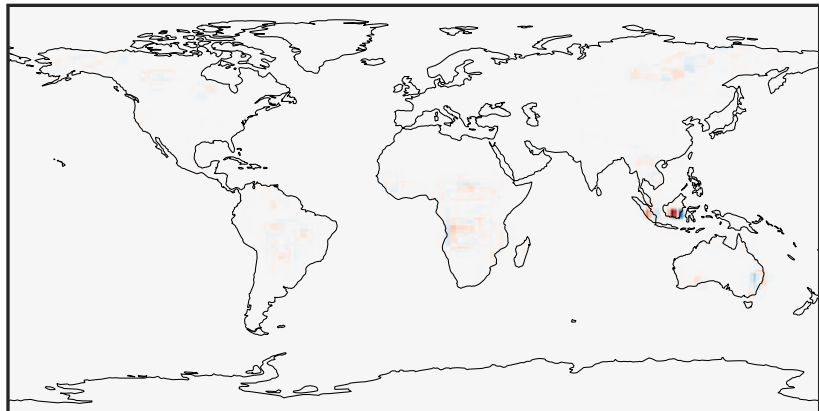
0.0000 0.0807 0.1613 0.2420 0.3226  
ppb

14.3.0-rc.0 (Dev)  
c24



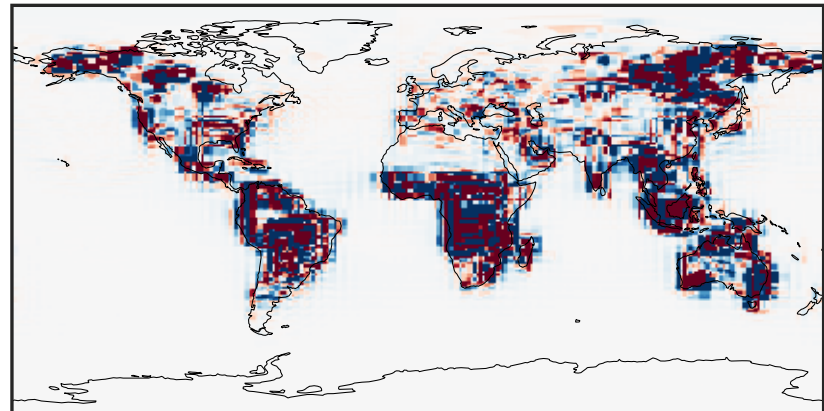
0.0000 0.0807 0.1613 0.2420 0.3226  
ppb

Difference (1x1.25)  
Dev - Ref, Dynamic Range



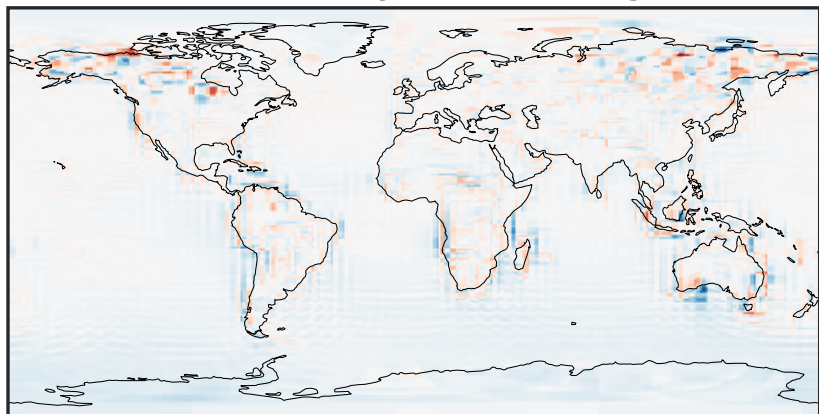
-0.4223 -0.2112 0.0000 0.2112 0.4223  
ppb

Difference (1x1.25)  
Dev - Ref, Restricted Range [5%,95%]



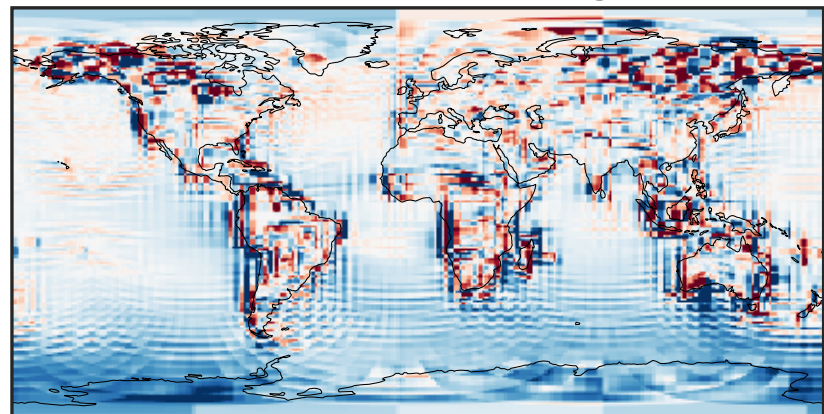
-0.0015 0.0000 0.0015  
ppb

Ratio (1x1.25)  
Dev/Ref, Dynamic Range



1e-01 1 10  
unitless

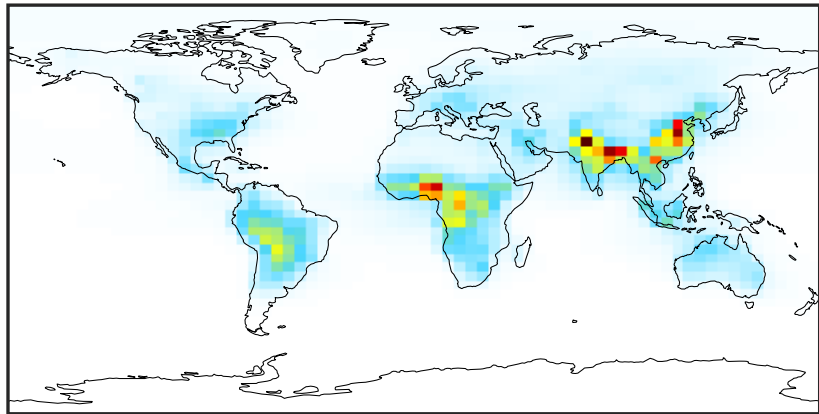
Ratio (1x1.25)  
Dev/Ref, Fixed Range



0.50 0.75 1.00 1.50 2.00  
unitless

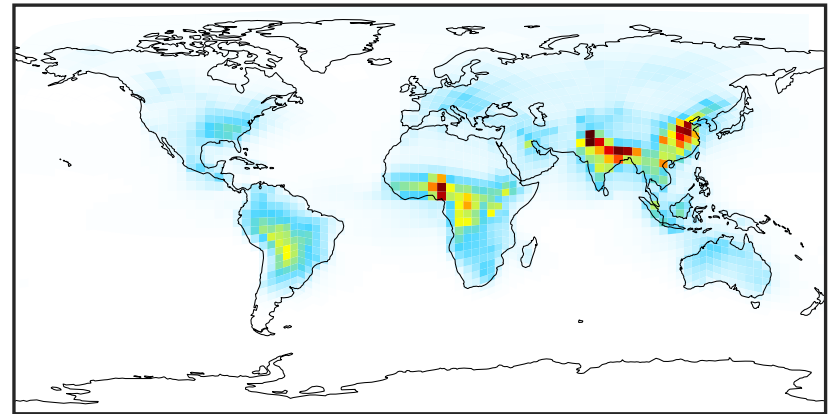
# SpeciesConcVV\_HCOOH (AnnualMean)

14.3.0-rc.0 (Ref)  
4.0x5.0



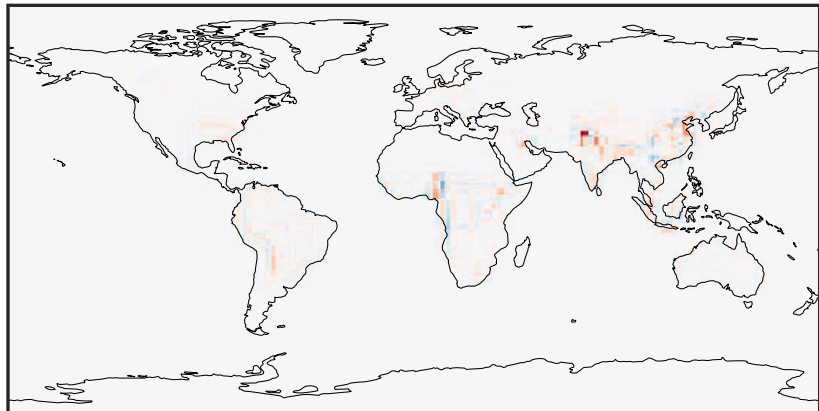
0.001 0.640 1.279 1.918 2.556  
ppb

14.3.0-rc.0 (Dev)  
c24



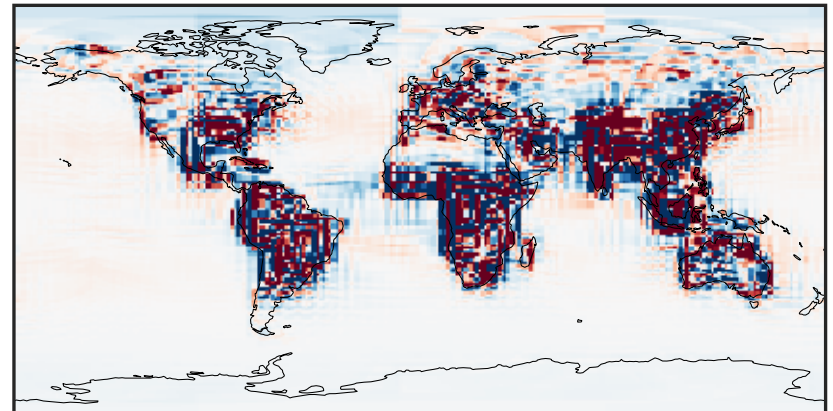
0.001 0.640 1.279 1.918 2.556  
ppb

Difference (1x1.25)  
Dev - Ref, Dynamic Range



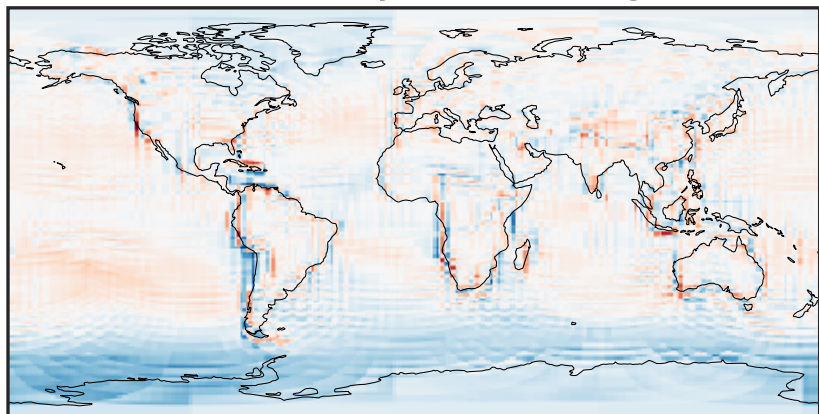
-1.786 -0.893 0.000 0.893 1.786  
ppb

Difference (1x1.25)  
Dev - Ref, Restricted Range [5%,95%]



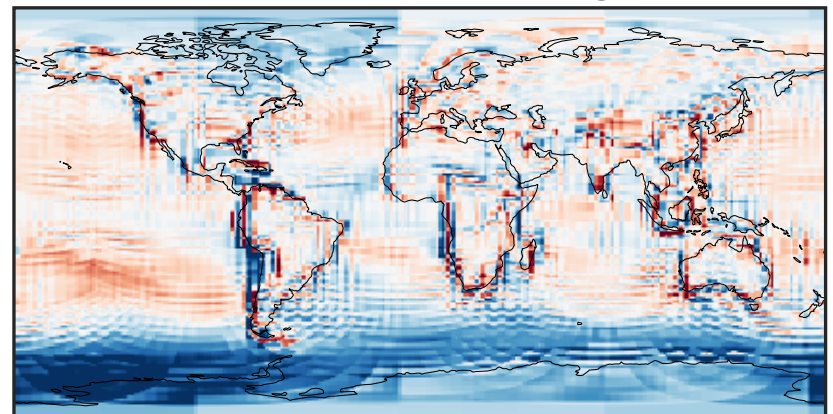
-0.02 0.00 0.02  
ppb

Ratio (1x1.25)  
Dev/Ref, Dynamic Range



0.196 0.598 1.000 3.057 5.113  
unitless

Ratio (1x1.25)  
Dev/Ref, Fixed Range

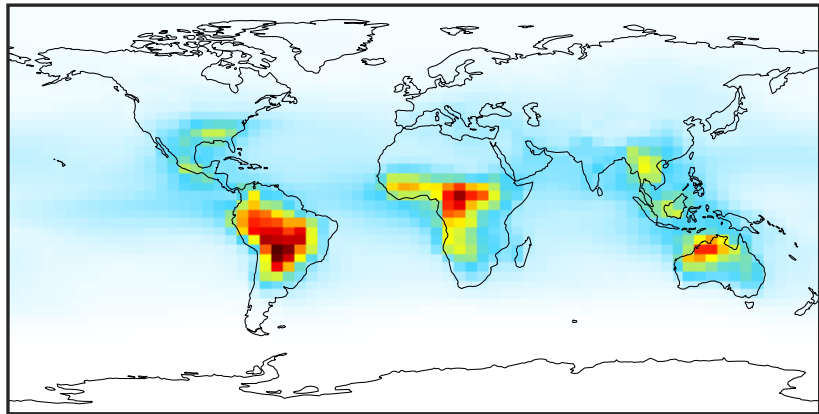


0.50 0.75 1.00 1.50 2.00  
unitless



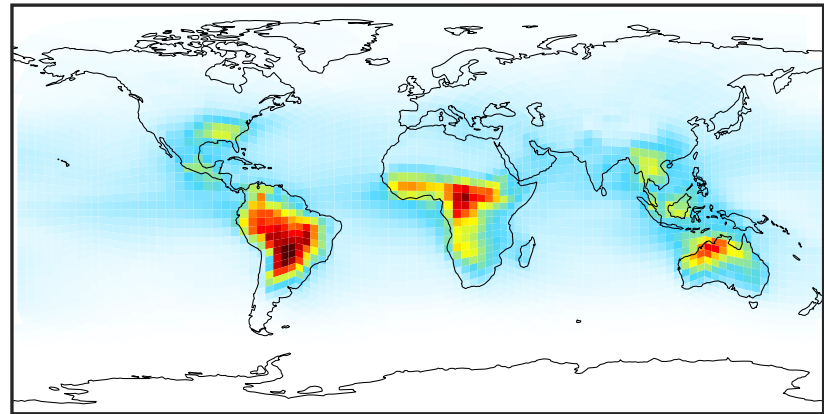
# SpeciesConcVV\_MAP (AnnualMean)

14.3.0-rc.0 (Ref)  
4.0x5.0



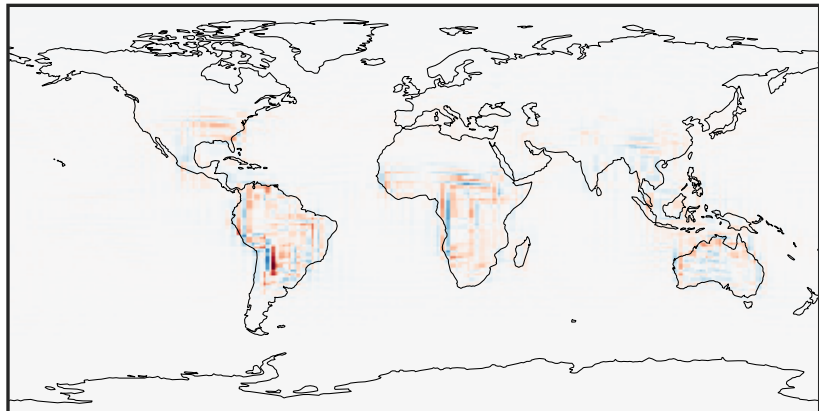
0.0026 0.1934 0.3841 0.5749 0.7656  
ppb

14.3.0-rc.0 (Dev)  
c24



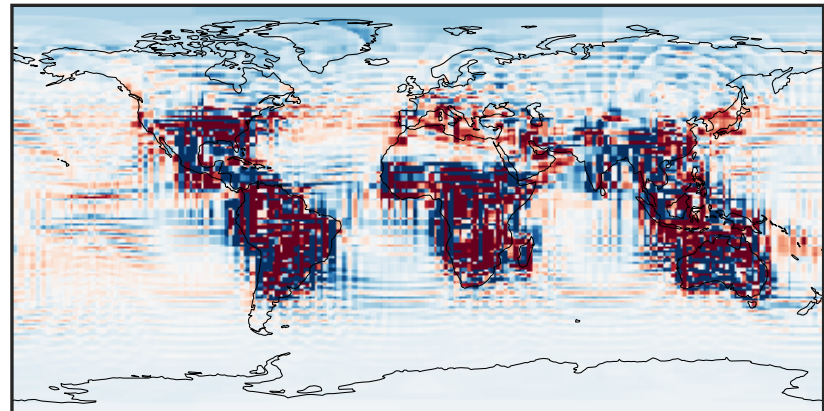
0.0026 0.1934 0.3841 0.5749 0.7656  
ppb

Difference (1x1.25)  
Dev - Ref, Dynamic Range



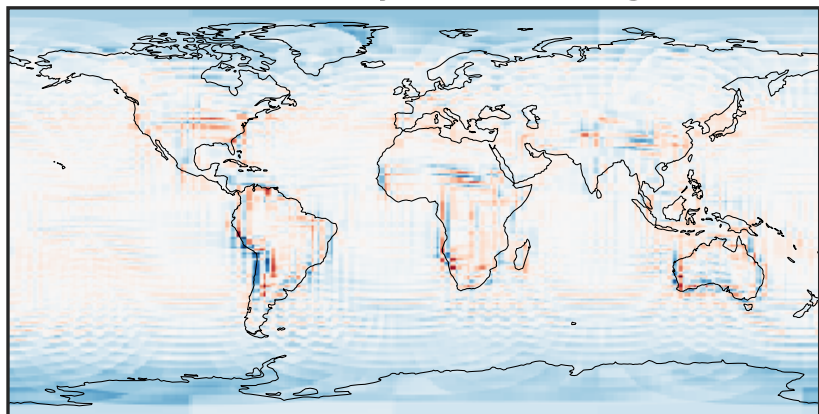
-0.2784 -0.1392 0.0000 0.1392 0.2784  
ppb

Difference (1x1.25)  
Dev - Ref, Restricted Range [5%,95%]



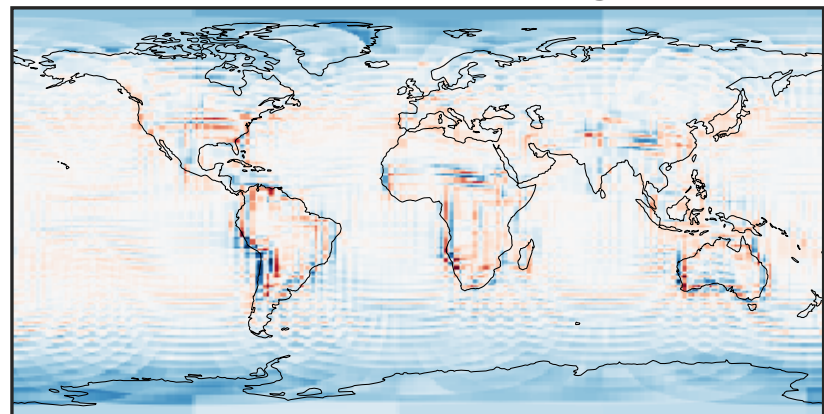
-0.006 0.000 0.006  
ppb

Ratio (1x1.25)  
Dev/Ref, Dynamic Range



0.429 0.714 1.000 1.666 2.333  
unitless

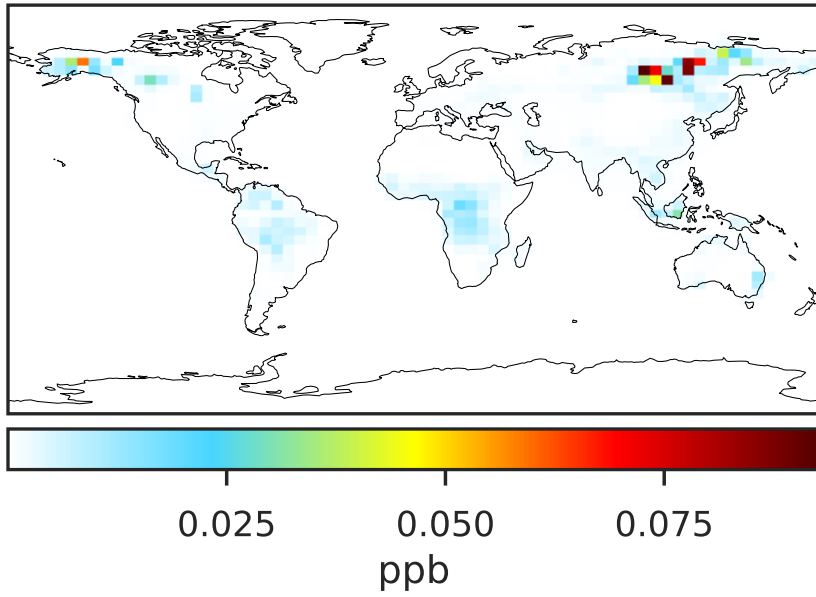
Ratio (1x1.25)  
Dev/Ref, Fixed Range



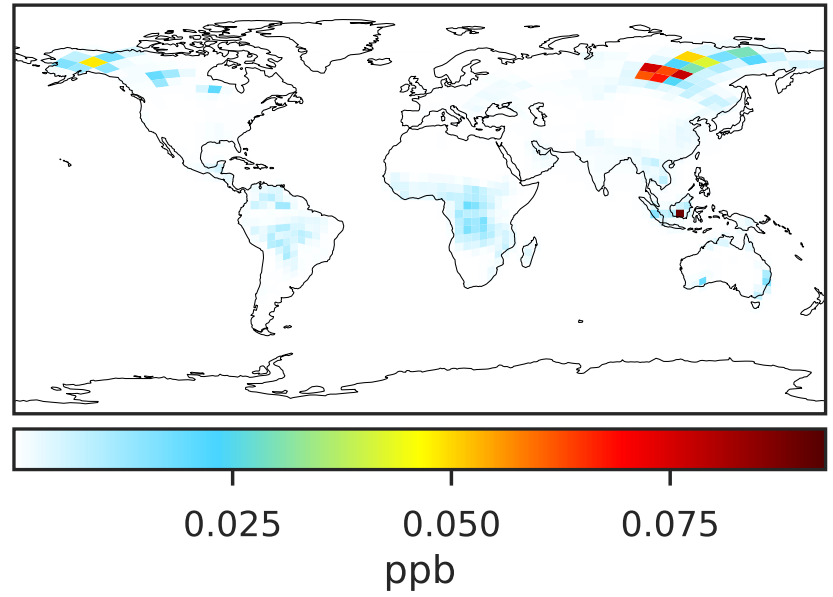
0.50 0.75 1.00 1.50 2.00  
unitless

# SpeciesConcVV\_PHEN (AnnualMean)

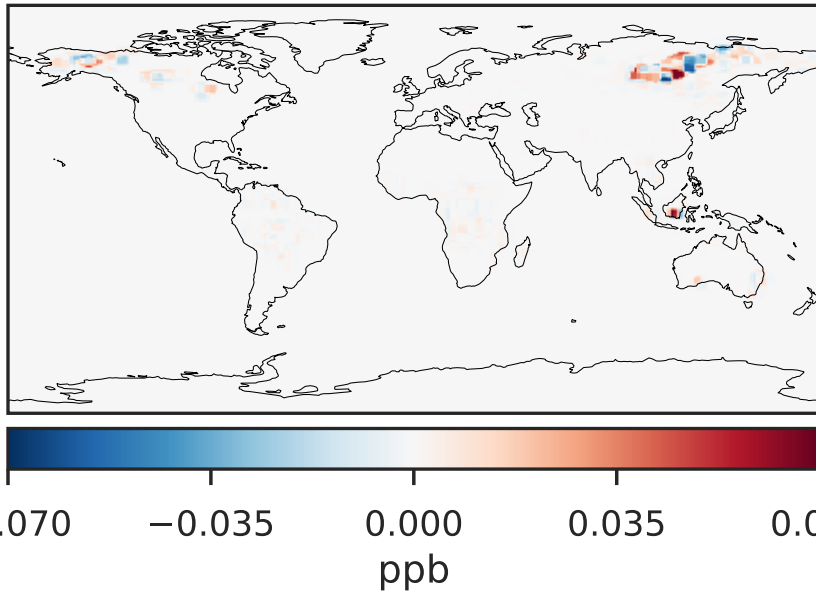
14.3.0-rc.0 (Ref)  
4.0x5.0



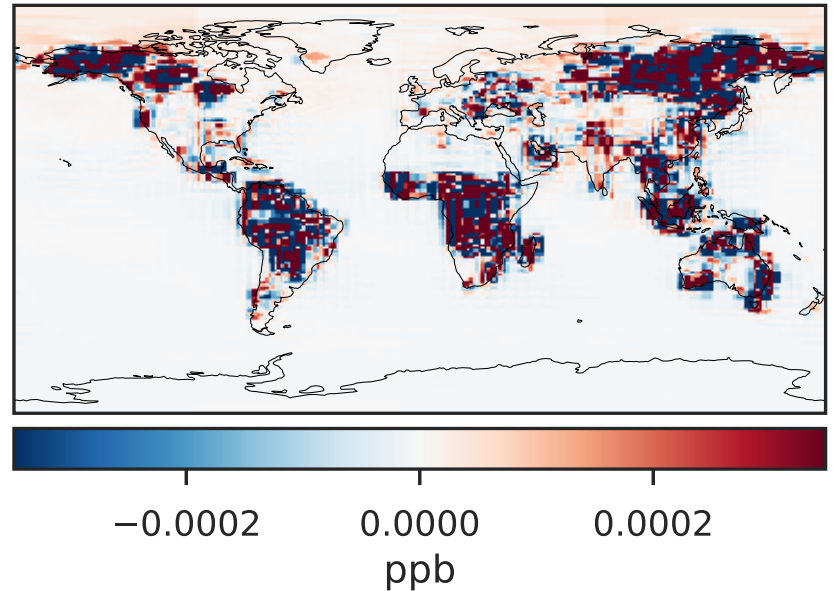
14.3.0-rc.0 (Dev)  
c24



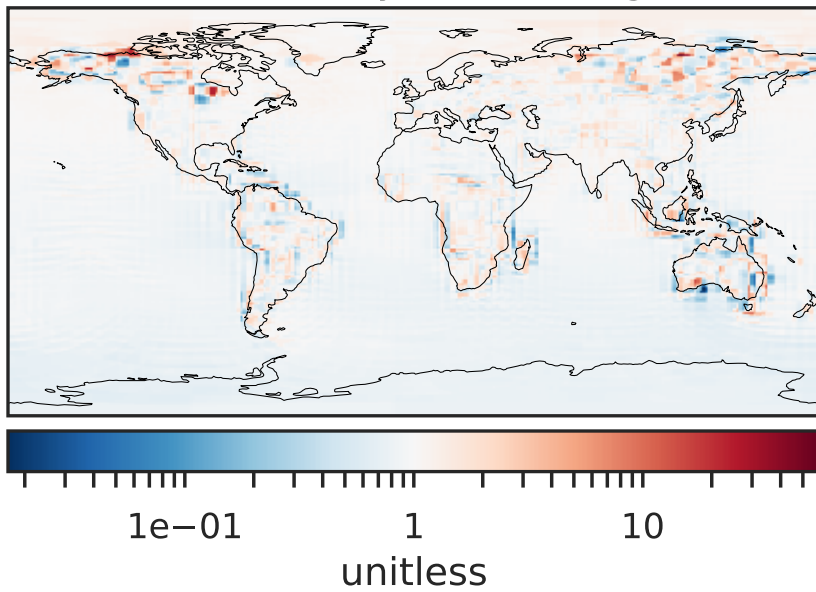
Difference (1x1.25)  
Dev - Ref, Dynamic Range



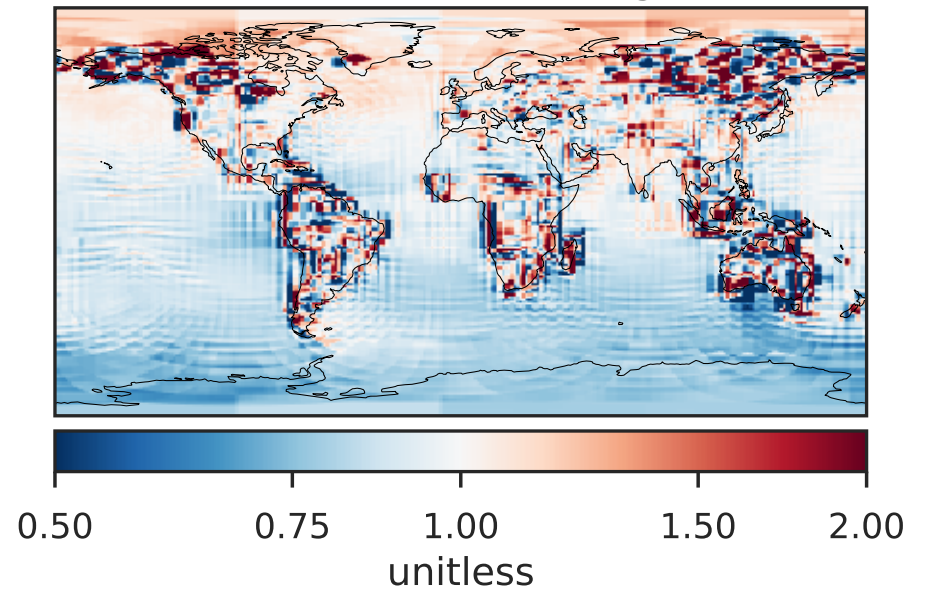
Difference (1x1.25)  
Dev - Ref, Restricted Range [5%,95%]



Ratio (1x1.25)  
Dev/Ref, Dynamic Range

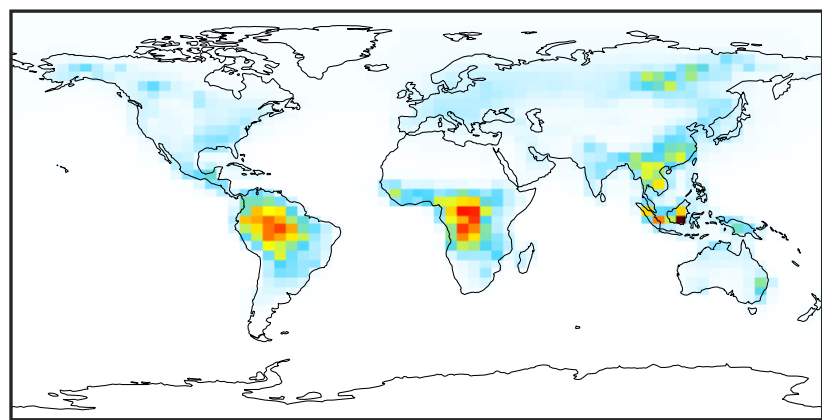


Ratio (1x1.25)  
Dev/Ref, Fixed Range



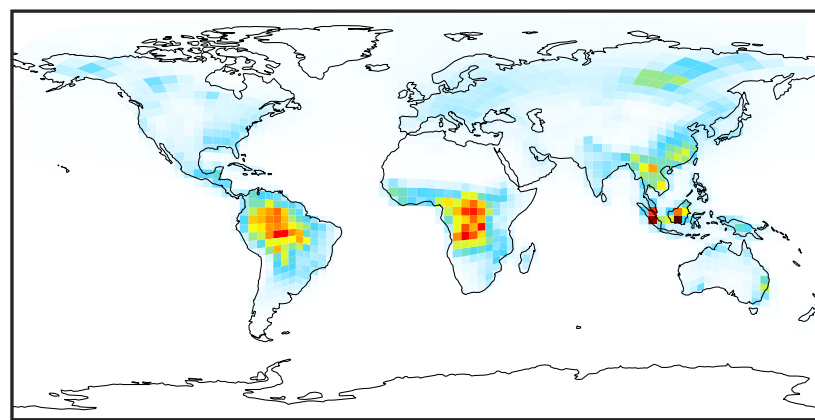
# SpeciesConcVV\_RCHO (AnnualMean)

14.3.0-rc.0 (Ref)  
4.0x5.0



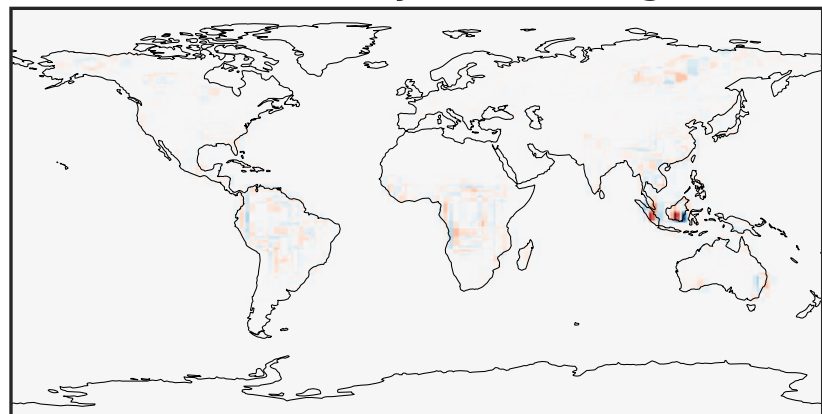
0.000 0.365 0.729 1.094 1.459  
ppb

14.3.0-rc.0 (Dev)  
c24



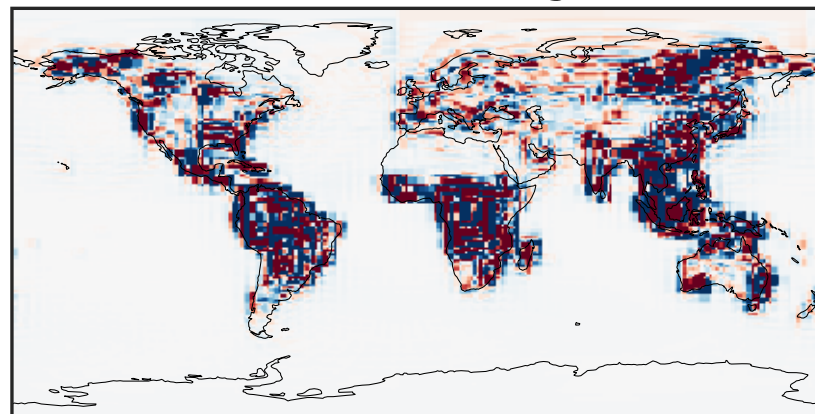
0.000 0.365 0.729 1.094 1.459  
ppb

Difference (1x1.25)  
Dev - Ref, Dynamic Range



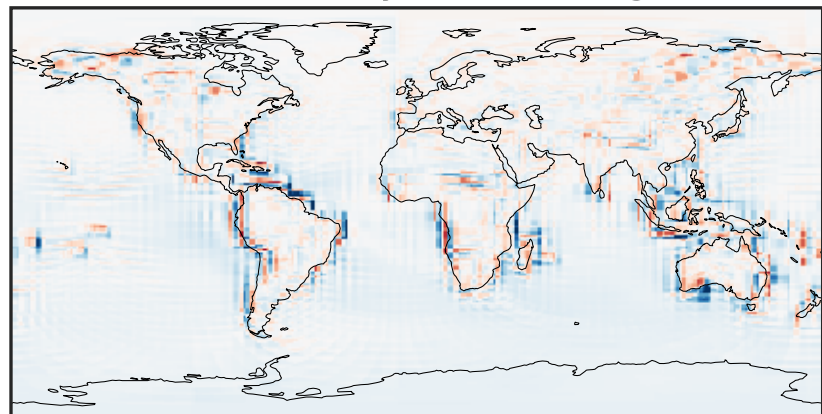
-1.270 -0.635 0.000 0.635 1.270  
ppb

Difference (1x1.25)  
Dev - Ref, Restricted Range [5%,95%]



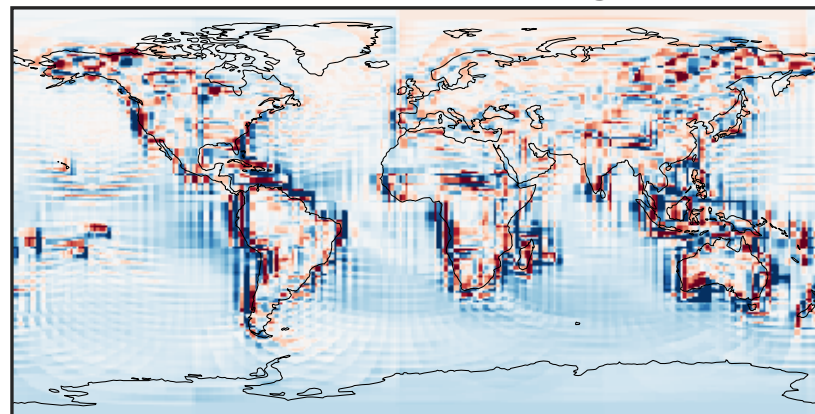
-0.015 0.000 0.015  
ppb

Ratio (1x1.25)  
Dev/Ref, Dynamic Range



0.107 0.554 1.000 5.162 9.323  
unitless

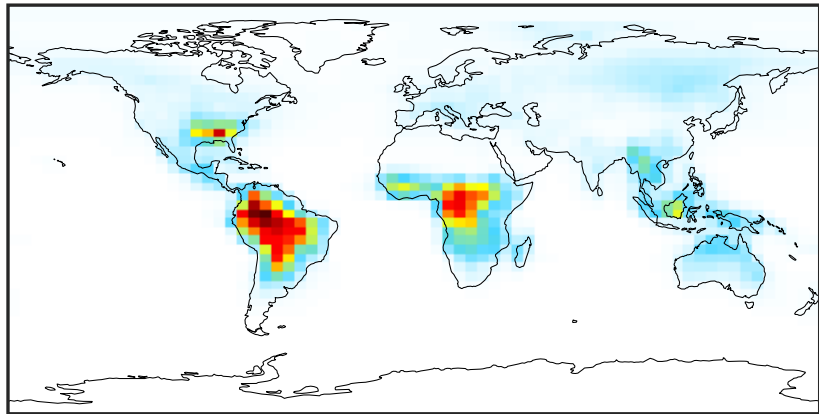
Ratio (1x1.25)  
Dev/Ref, Fixed Range



0.50 0.75 1.00 1.50 2.00  
unitless

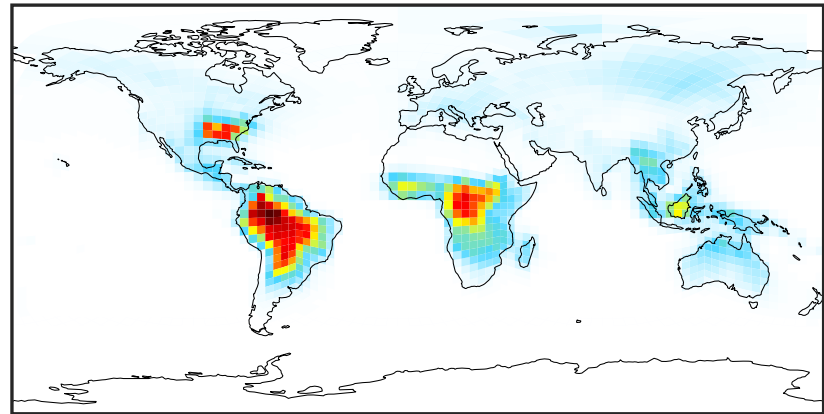
# SpeciesConcVV\_ETHP (AnnualMean)

14.3.0-rc.0 (Ref)  
4.0x5.0



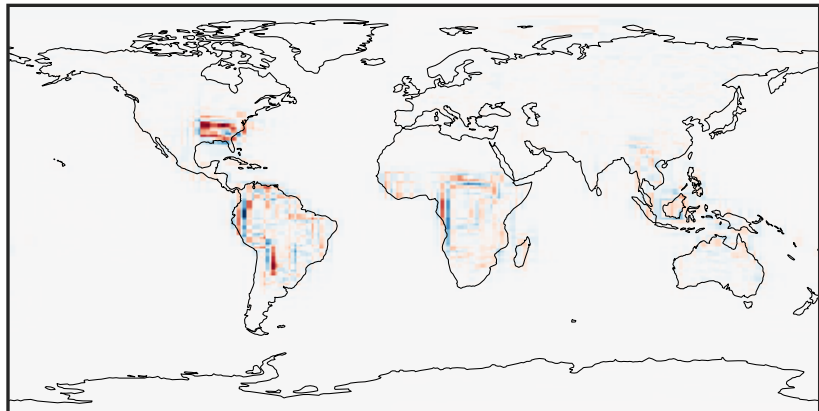
0.000 0.042 0.084 0.126 0.168  
ppb

14.3.0-rc.0 (Dev)  
c24



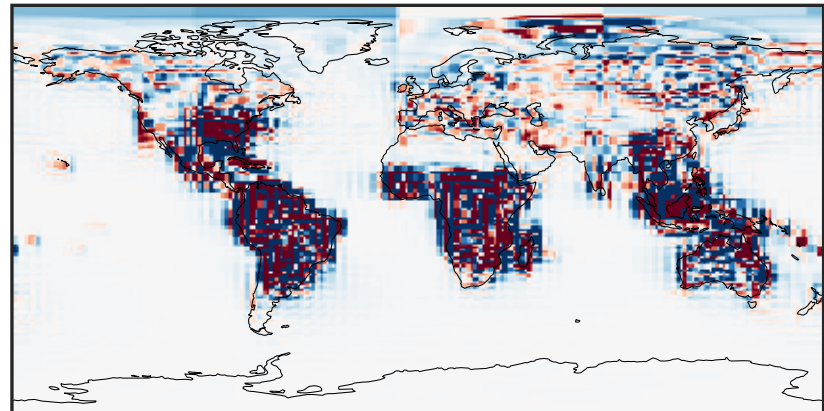
0.000 0.042 0.084 0.126 0.168  
ppb

Difference (1x1.25)  
Dev - Ref, Dynamic Range



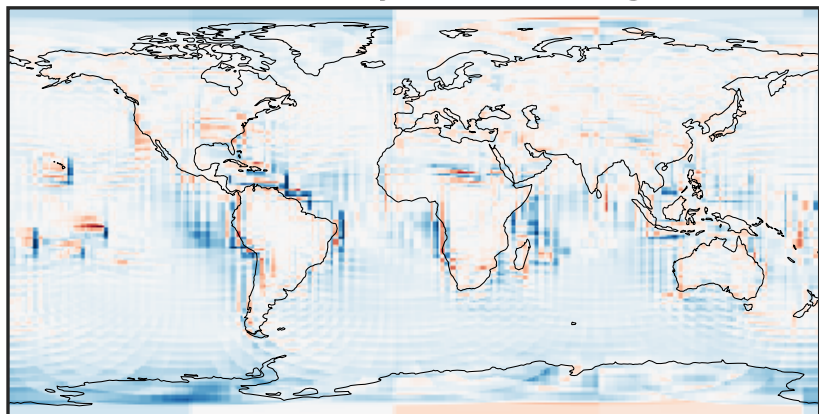
-0.0635 -0.0317 0.0000 0.0317 0.0635  
ppb

Difference (1x1.25)  
Dev - Ref, Restricted Range [5%,95%]



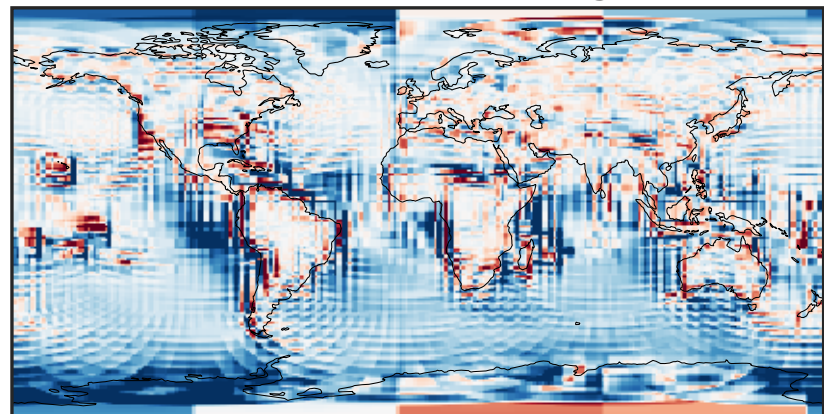
-0.0015 0.0000 0.0015  
ppb

Ratio (1x1.25)  
Dev/Ref, Dynamic Range



0.113 0.557 1.000 4.916 8.831  
unitless

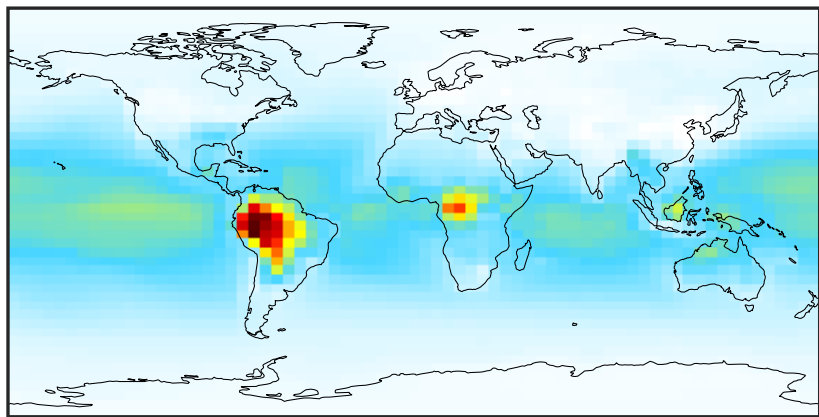
Ratio (1x1.25)  
Dev/Ref, Fixed Range



0.50 0.75 1.00 1.50 2.00  
unitless

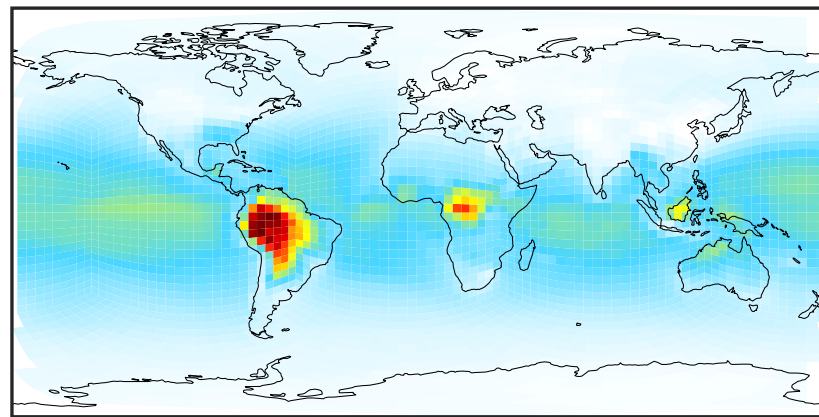
# SpeciesConcVV\_MP (AnnualMean)

14.3.0-rc.0 (Ref)  
4.0x5.0



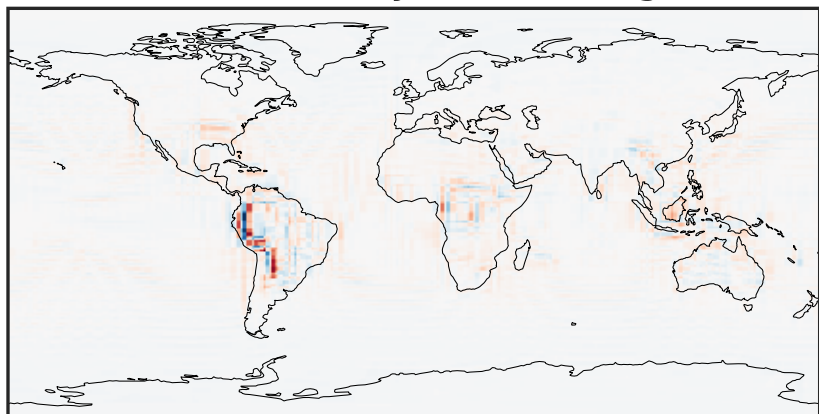
0.084 0.711 1.338 1.966 2.593  
ppb

14.3.0-rc.0 (Dev)  
c24



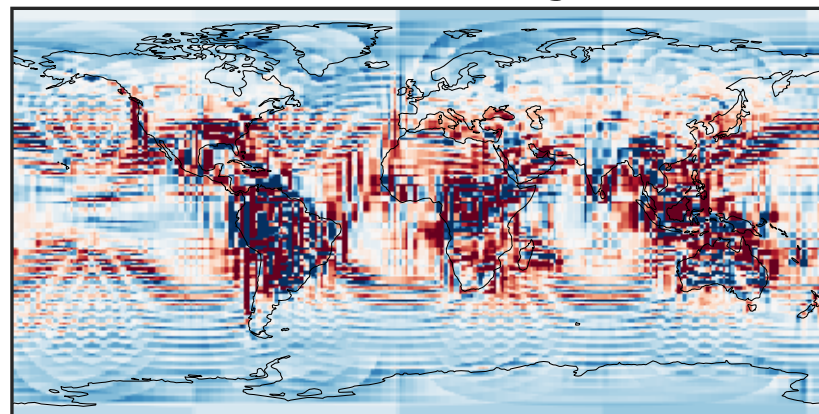
0.084 0.711 1.338 1.966 2.593  
ppb

Difference (1x1.25)  
Dev - Ref, Dynamic Range



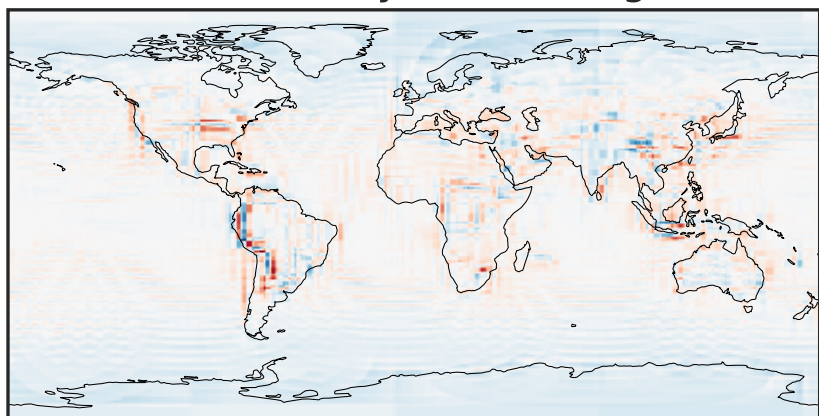
-0.811 -0.405 0.000 0.405 0.811  
ppb

Difference (1x1.25)  
Dev - Ref, Restricted Range [5%,95%]



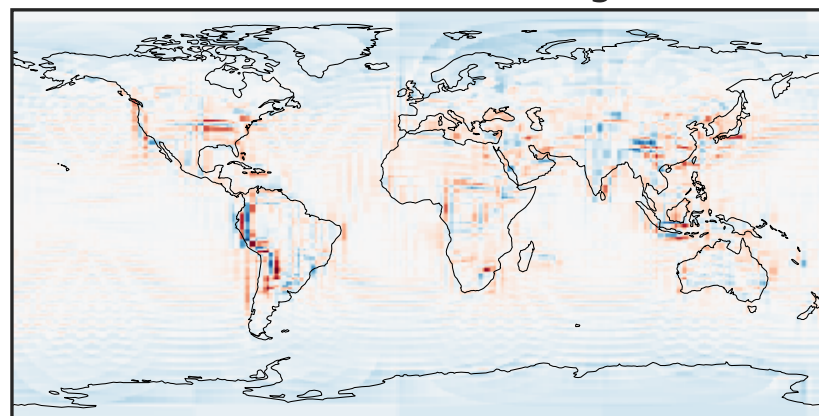
-0.025 0.000 0.025  
ppb

Ratio (1x1.25)  
Dev/Ref, Dynamic Range



0.444 0.722 1.000 1.627 2.254  
unitless

Ratio (1x1.25)  
Dev/Ref, Fixed Range



0.50 0.75 1.00 1.50 2.00  
unitless