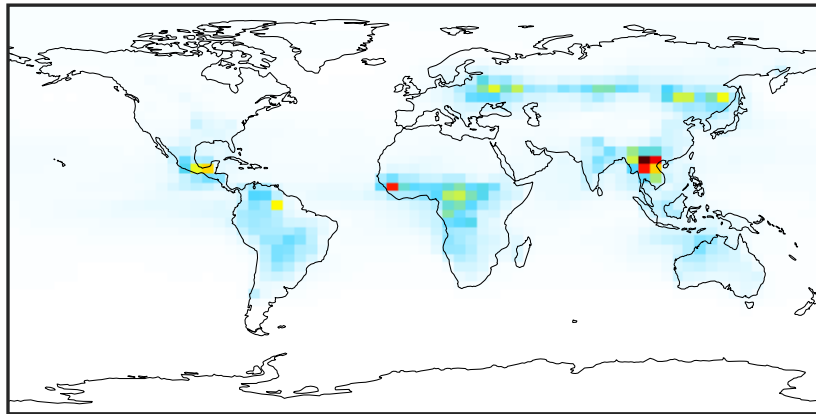


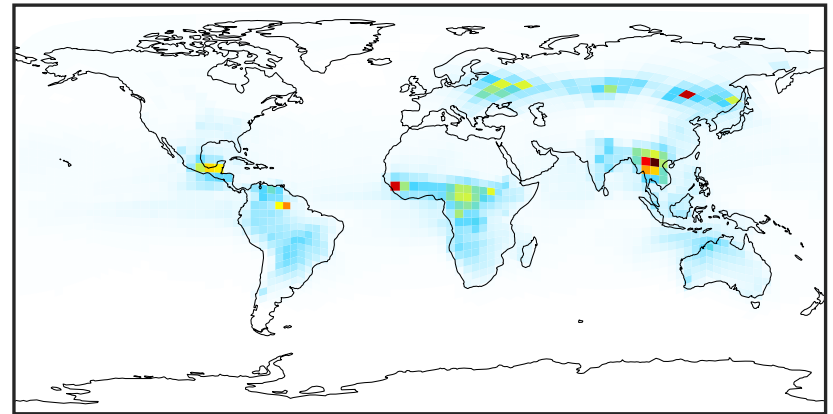
SpeciesConcVV_ACTA (Apr2019)

14.3.0-rc.0 (Ref)
4.0x5.0



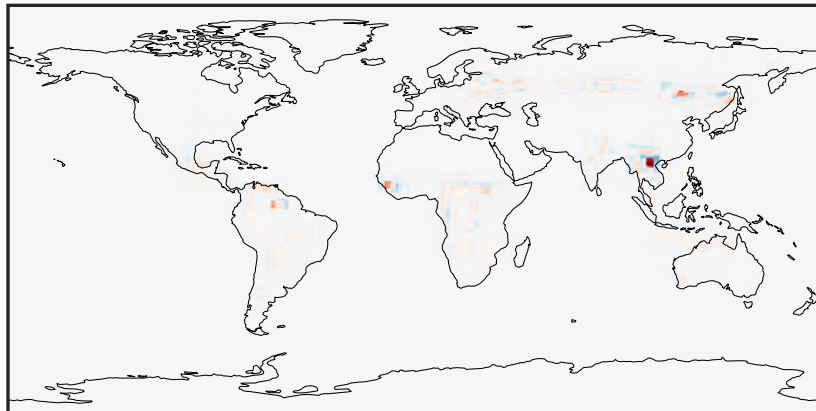
0.001 0.568 1.135 1.702 2.269
ppb

14.3.0-rc.0 (Dev)
c24



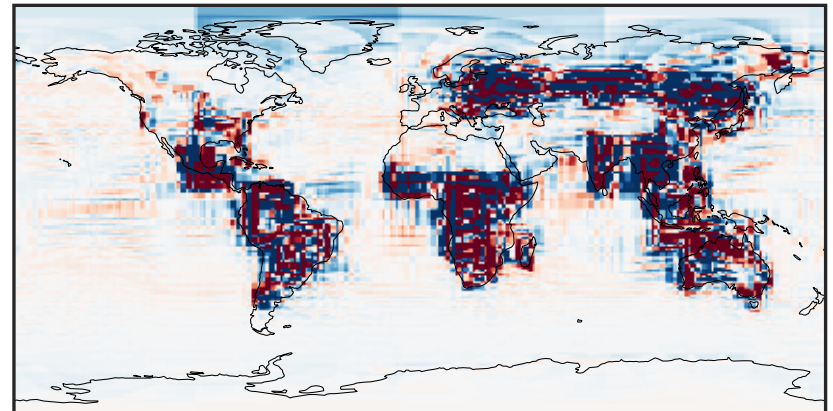
0.001 0.568 1.135 1.702 2.269
ppb

Difference (1x1.25)
Dev - Ref, Dynamic Range



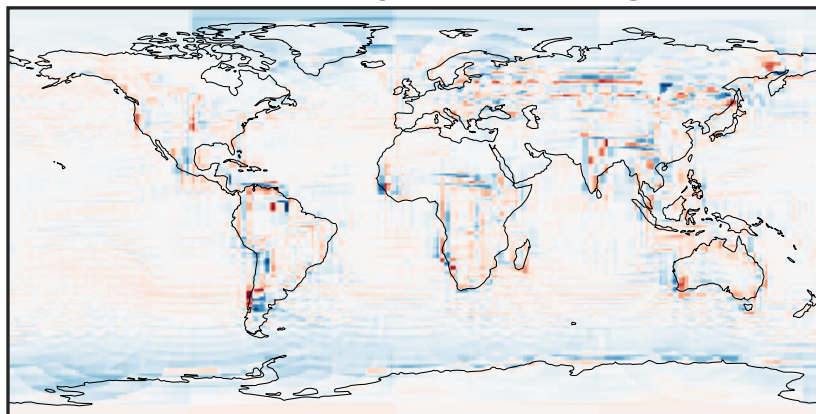
-1.989 -0.994 0.000 0.994 1.989
ppb

Difference (1x1.25)
Dev - Ref, Restricted Range [5%,95%]



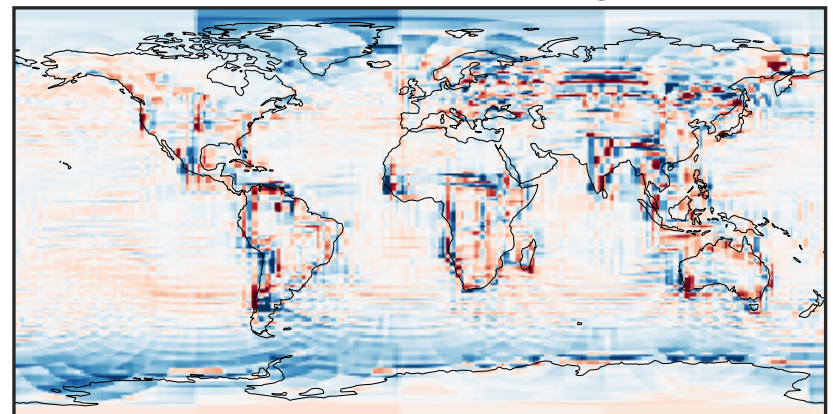
-0.01 0.00 0.01
ppb

Ratio (1x1.25)
Dev/Ref, Dynamic Range



0.215 0.608 1.000 2.825 4.650
unitless

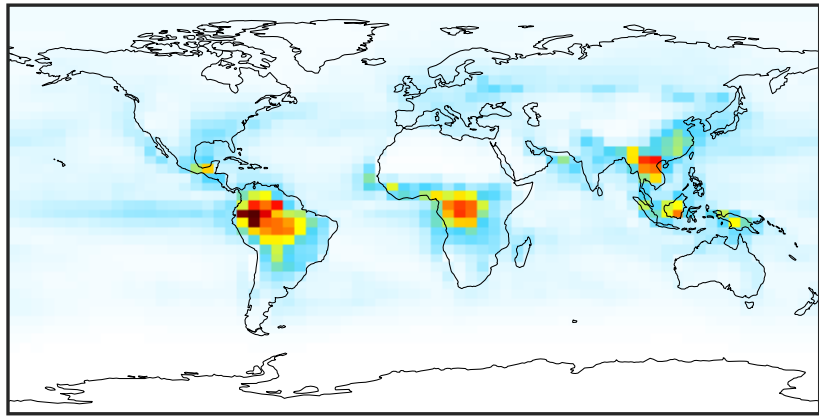
Ratio (1x1.25)
Dev/Ref, Fixed Range



0.50 0.75 1.00 1.50 2.00
unitless

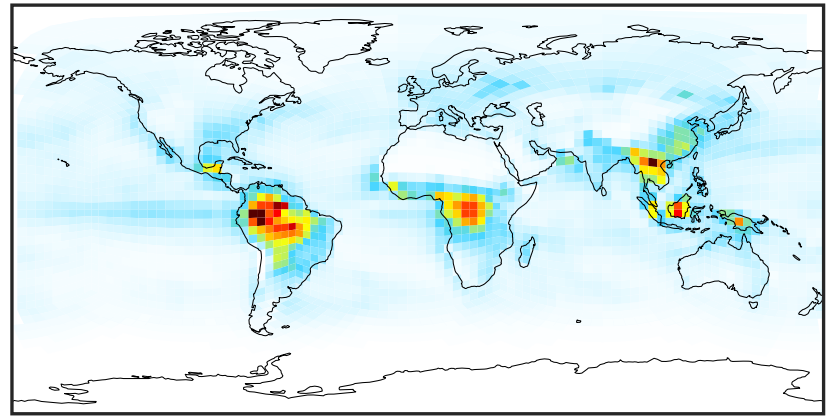
SpeciesConcVW_ALD2 (Apr2019)

14.3.0-rc.0 (Ref)
4.0x5.0



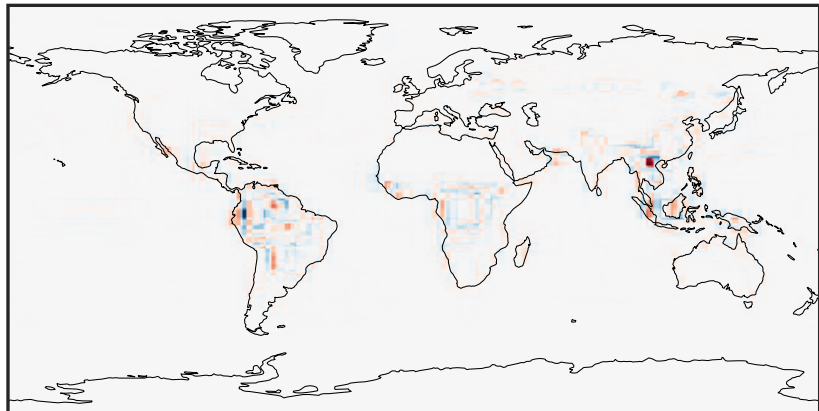
0.002 0.727 1.451 2.175 2.900
ppb

14.3.0-rc.0 (Dev)
c24



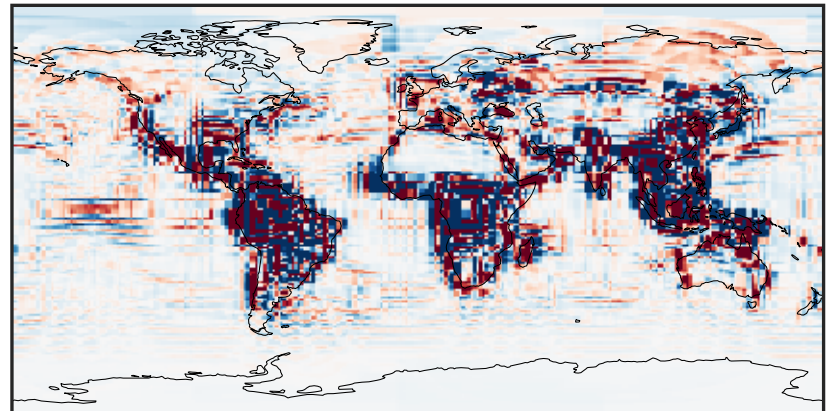
0.002 0.727 1.451 2.175 2.900
ppb

Difference (1x1.25)
Dev - Ref, Dynamic Range



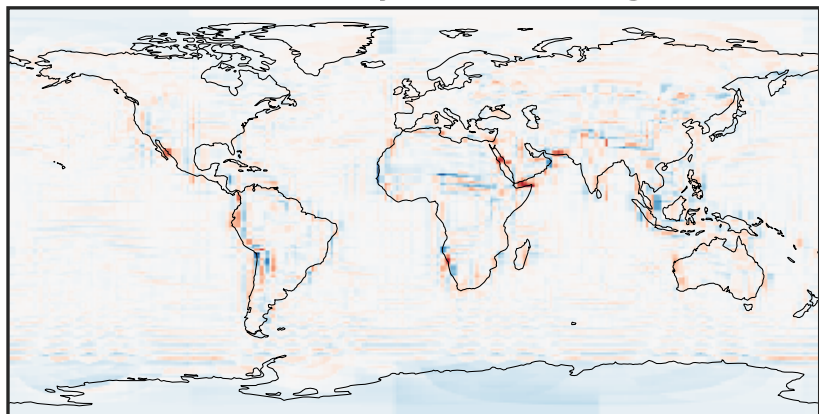
-1.422 -0.711 0.000 0.711 1.422
ppb

Difference (1x1.25)
Dev - Ref, Restricted Range [5%,95%]



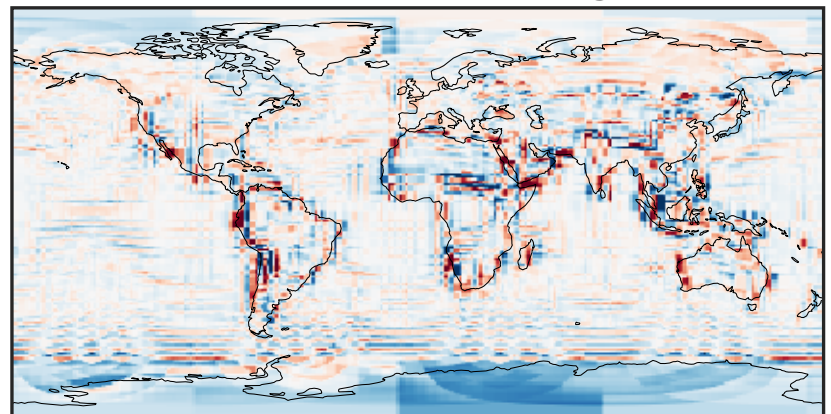
-0.025 0.000 0.025
ppb

Ratio (1x1.25)
Dev/Ref, Dynamic Range



0.129 0.564 1.000 4.391 7.782
unitless

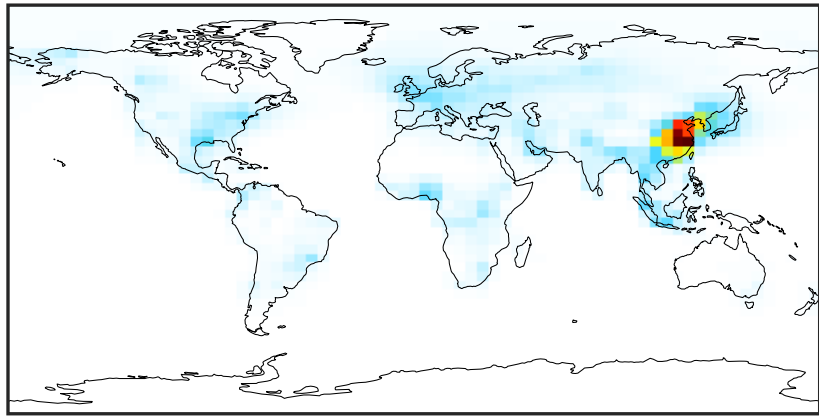
Ratio (1x1.25)
Dev/Ref, Fixed Range



0.50 0.75 1.00 1.50 2.00
unitless

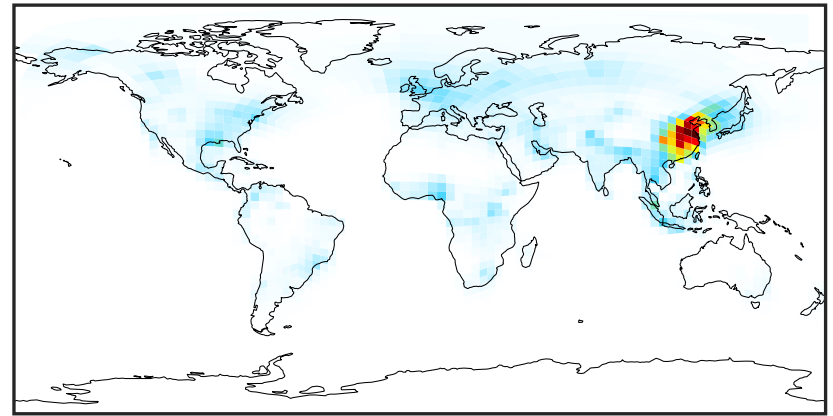
SpeciesConcVV_BALD (Apr2019)

14.3.0-rc.0 (Ref)
4.0x5.0



0.004 0.008 0.012
ppb

14.3.0-rc.0 (Dev)
c24



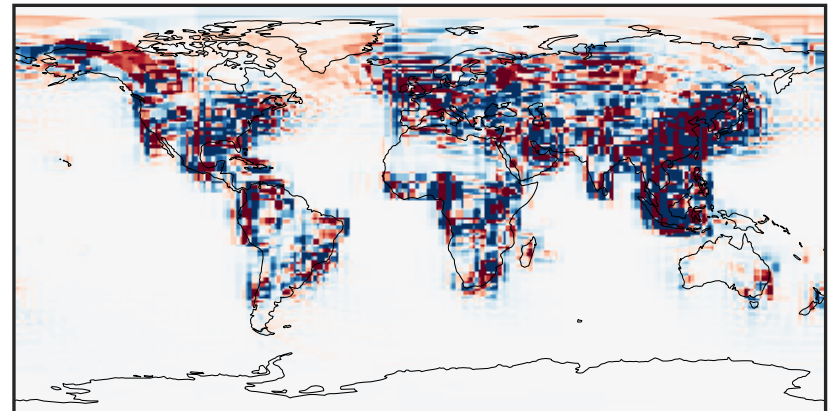
0.004 0.008 0.012
ppb

Difference (1x1.25)
Dev - Ref, Dynamic Range



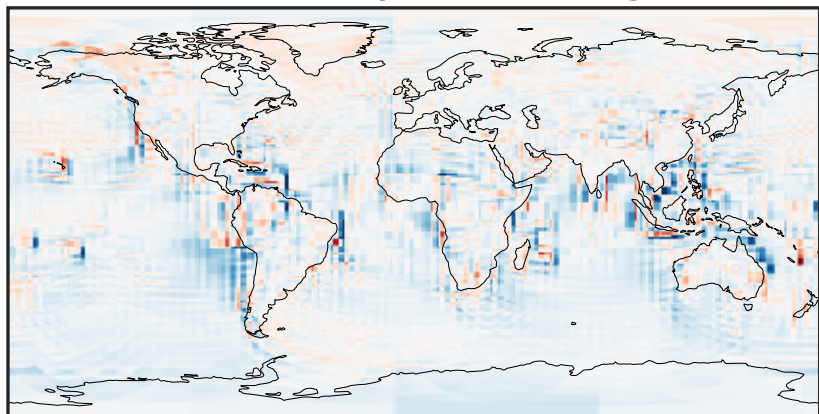
-0.004 0.000 0.004
ppb

Difference (1x1.25)
Dev - Ref, Restricted Range [5%,95%]



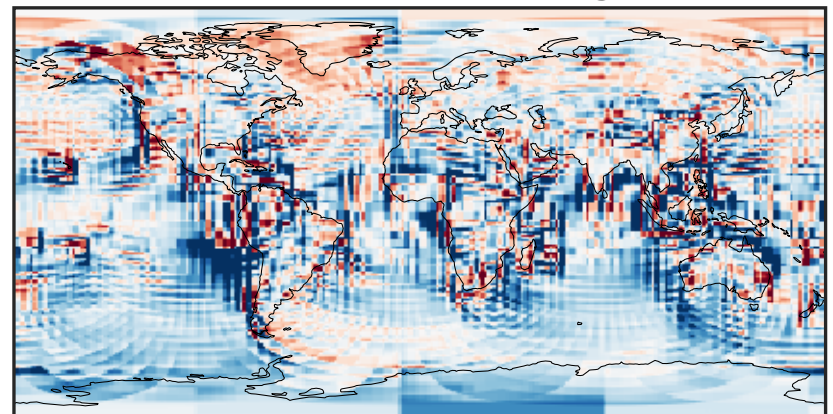
-6 0 6
ppb 1e-5

Ratio (1x1.25)
Dev/Ref, Dynamic Range



1e-01 1 10
unitless

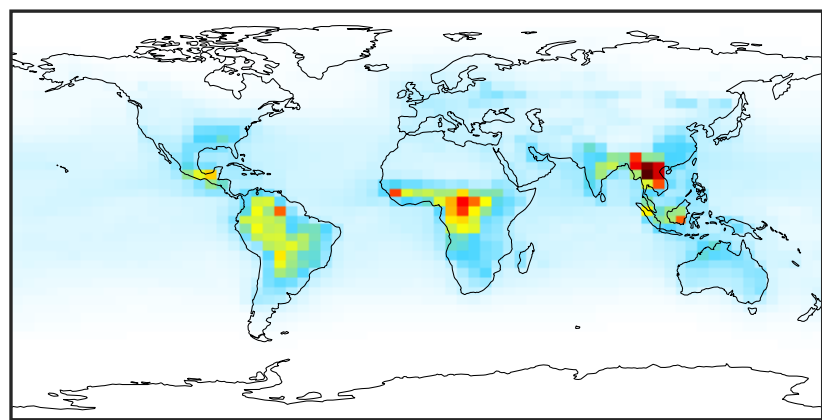
Ratio (1x1.25)
Dev/Ref, Fixed Range



0.50 0.75 1.00 1.50 2.00
unitless

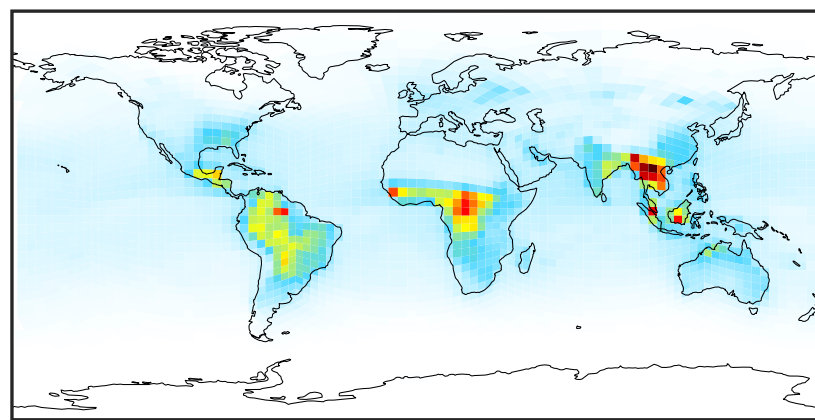
SpeciesConcVV_CH2O (Apr2019)

14.3.0-rc.0 (Ref)
4.0x5.0



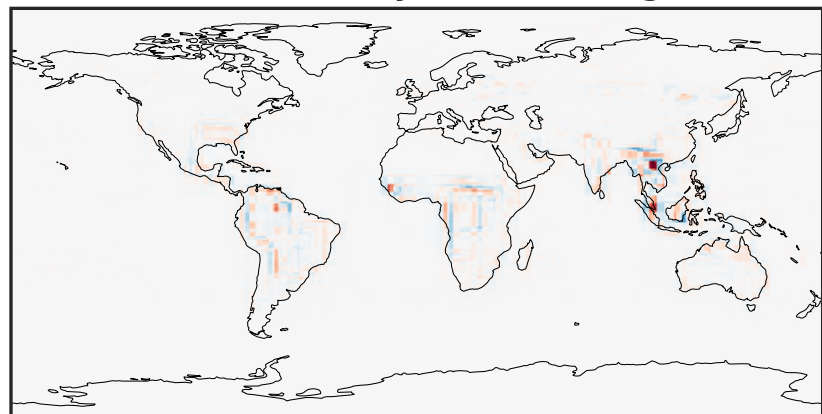
0.02 1.70 3.38 5.06 6.74
ppb

14.3.0-rc.0 (Dev)
c24



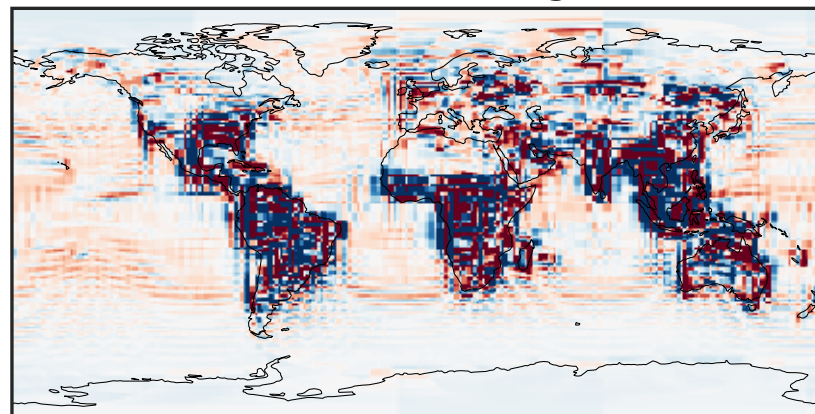
0.02 1.70 3.38 5.06 6.74
ppb

Difference (1x1.25)
Dev - Ref, Dynamic Range



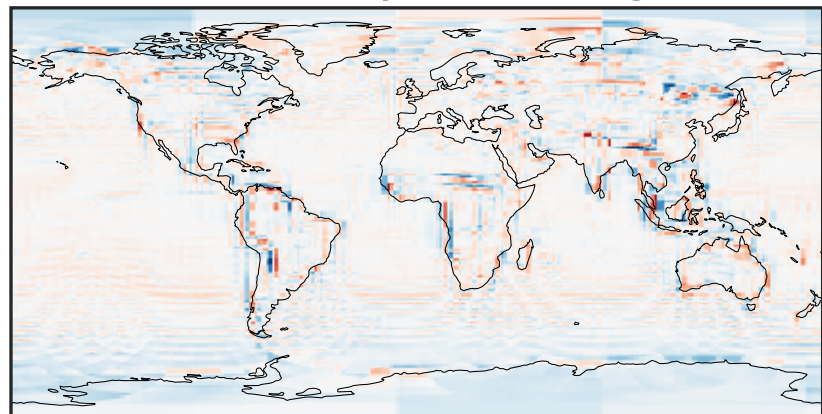
-3.512 -1.756 0.000 1.756 3.512
ppb

Difference (1x1.25)
Dev - Ref, Restricted Range [5%,95%]



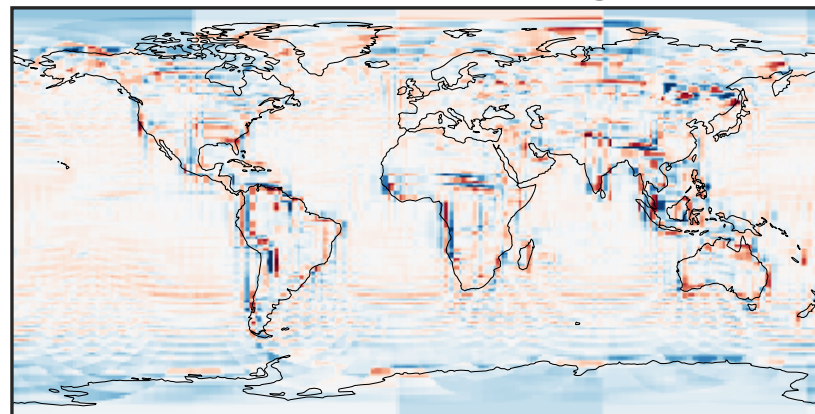
-0.0833 -0.0417 0.0000 0.0417 0.0833
ppb

Ratio (1x1.25)
Dev/Ref, Dynamic Range



0.343 0.672 1.000 1.957 2.913
unitless

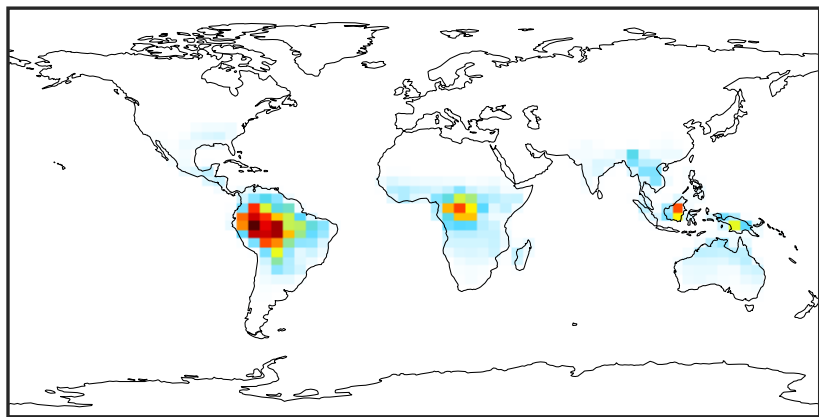
Ratio (1x1.25)
Dev/Ref, Fixed Range



0.50 0.75 1.00 1.50 2.00
unitless

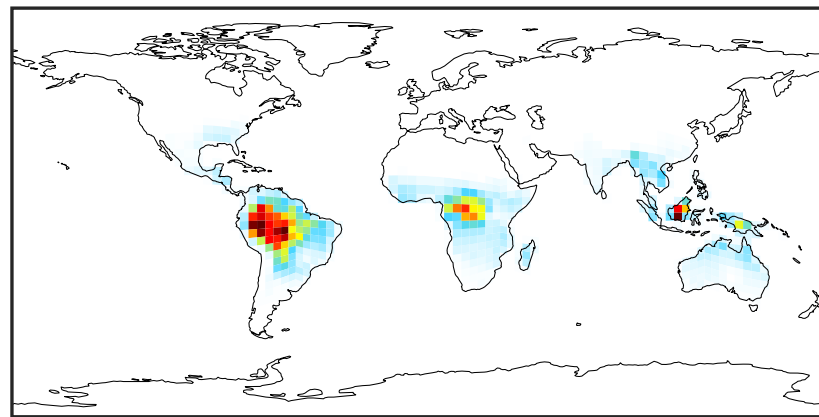
SpeciesConcVV_HPALDs (Apr2019)

14.3.0-rc.0 (Ref)
4.0x5.0



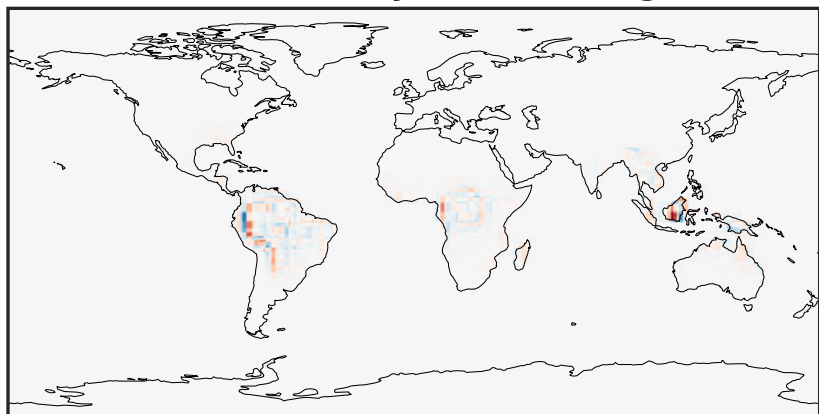
0.0000 0.0866 0.1732 0.2598 0.3463
ppb

14.3.0-rc.0 (Dev)
c24



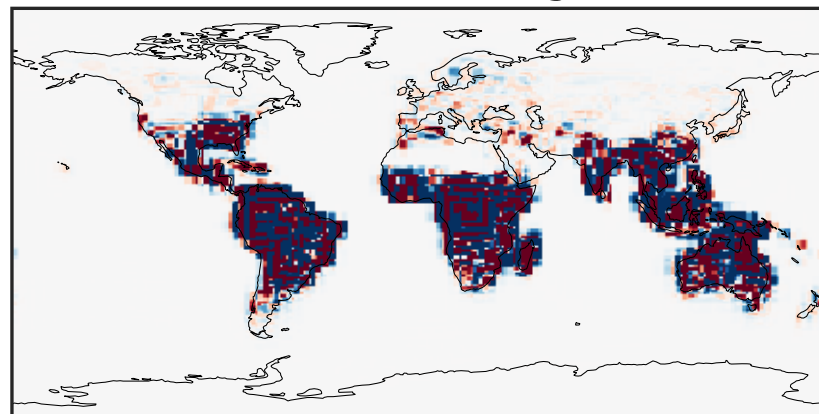
0.0000 0.0866 0.1732 0.2598 0.3463
ppb

Difference (1x1.25)
Dev - Ref, Dynamic Range



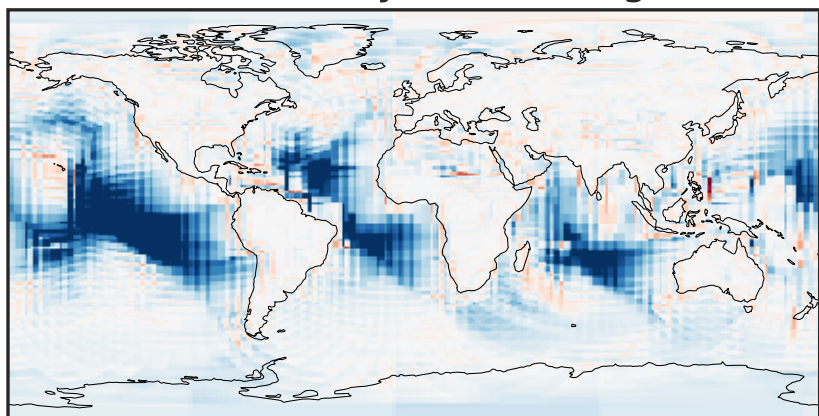
-0.2194 -0.1097 0.0000 0.1097 0.2194
ppb

Difference (1x1.25)
Dev - Ref, Restricted Range [5%,95%]



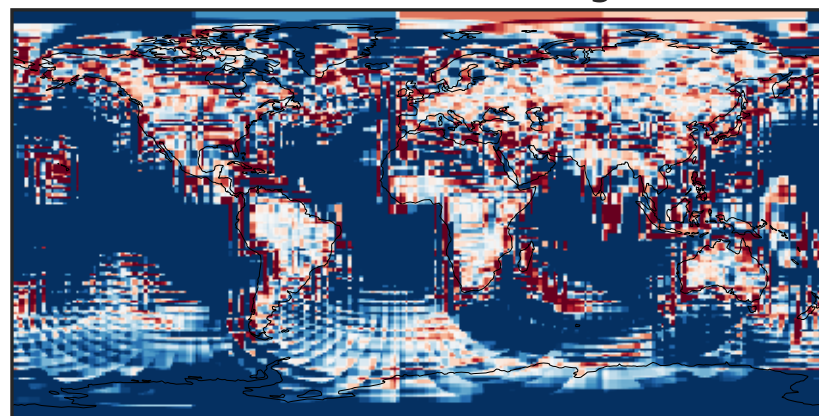
-0.0004 0.0000 0.0004
ppb

Ratio (1x1.25)
Dev/Ref, Dynamic Range



1e-03 1e-02 1e-01 1 10 100 1000
unitless

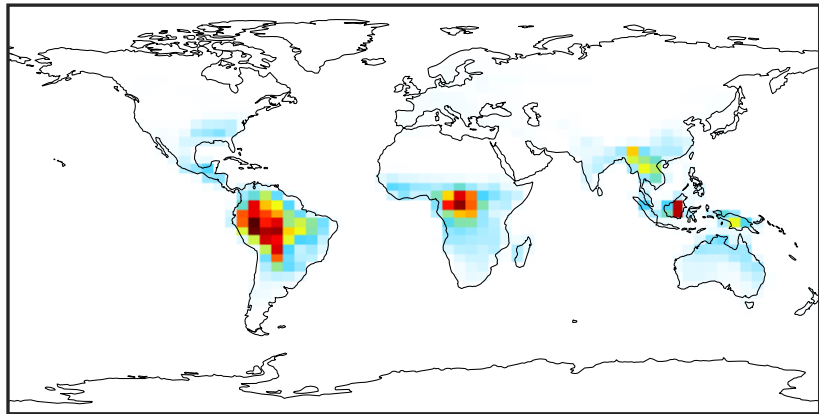
Ratio (1x1.25)
Dev/Ref, Fixed Range



0.50 0.75 1.00 1.50 2.00
unitless

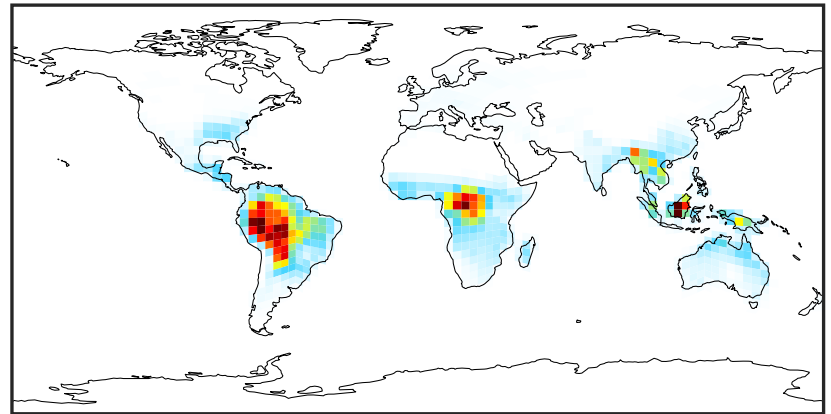
SpeciesConcVV_MACR (Apr2019)

14.3.0-rc.0 (Ref)
4.0x5.0



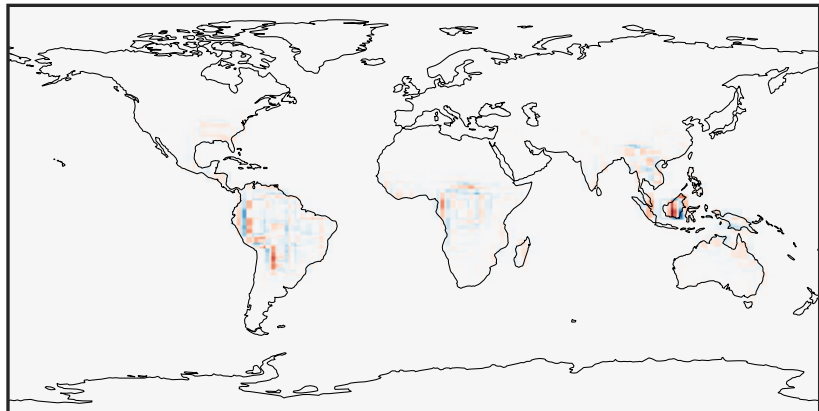
0.000 0.264 0.527 0.791 1.055
ppb

14.3.0-rc.0 (Dev)
c24



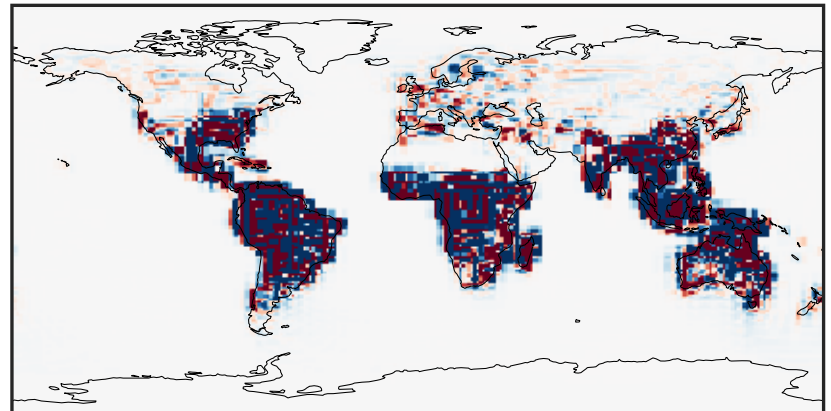
0.000 0.264 0.527 0.791 1.055
ppb

Difference (1x1.25)
Dev - Ref, Dynamic Range



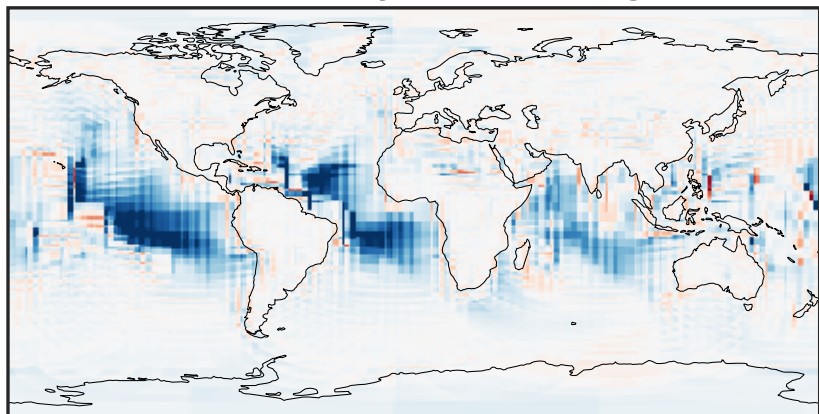
-0.764 -0.382 0.000 0.382 0.764
ppb

Difference (1x1.25)
Dev - Ref, Restricted Range [5%,95%]



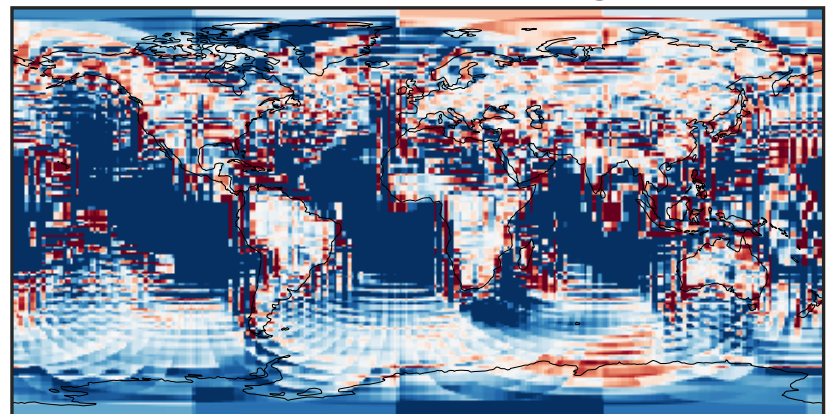
-0.003 0.000 0.003
ppb

Ratio (1x1.25)
Dev/Ref, Dynamic Range



1e-03 1e-02 1e-01 1 10 100 1000
unitless

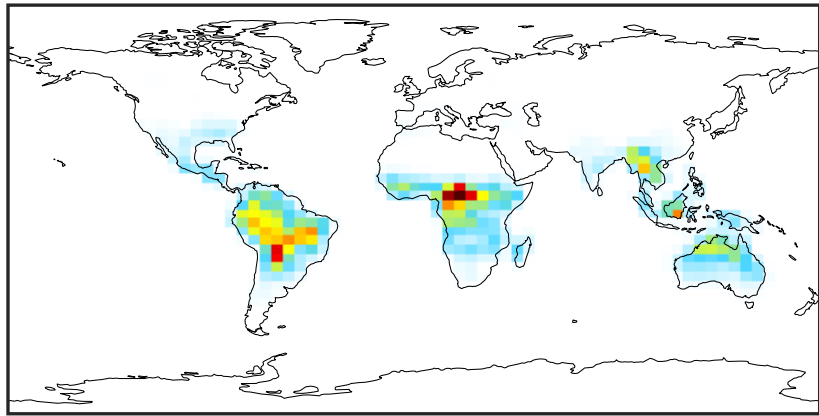
Ratio (1x1.25)
Dev/Ref, Fixed Range



0.50 0.75 1.00 1.50 2.00
unitless

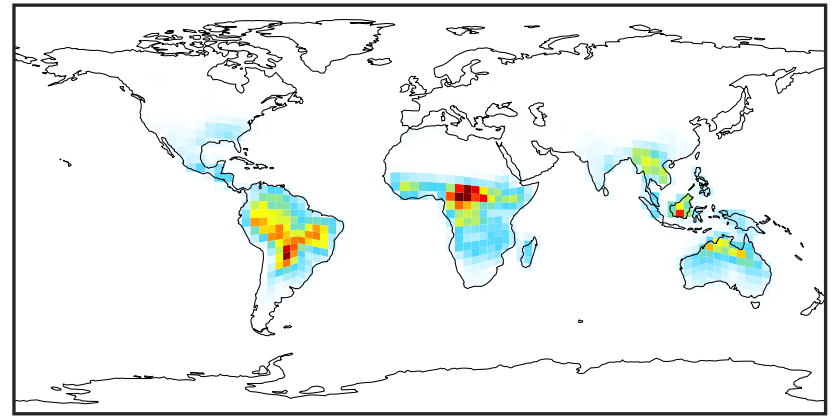
SpeciesConcVV_IEPOX (Apr2019)

14.3.0-rc.0 (Ref)
4.0x5.0



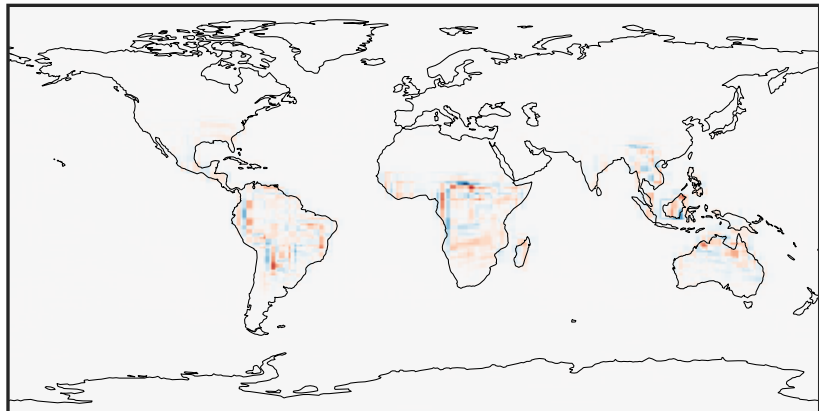
0.000 0.256 0.512 0.768 1.024
ppb

14.3.0-rc.0 (Dev)
c24



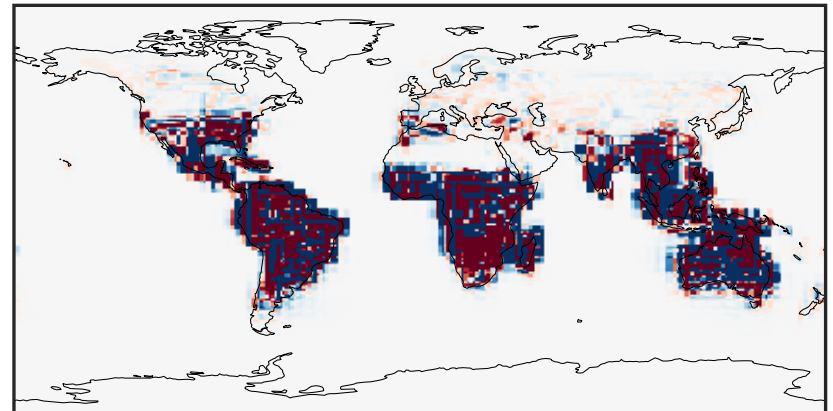
0.000 0.256 0.512 0.768 1.024
ppb

Difference (1x1.25)
Dev - Ref, Dynamic Range



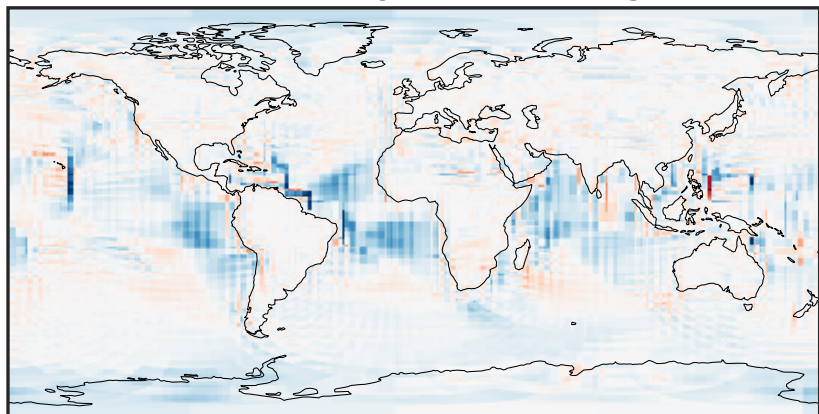
-0.554 -0.277 0.000 0.277 0.554
ppb

Difference (1x1.25)
Dev - Ref, Restricted Range [5%,95%]



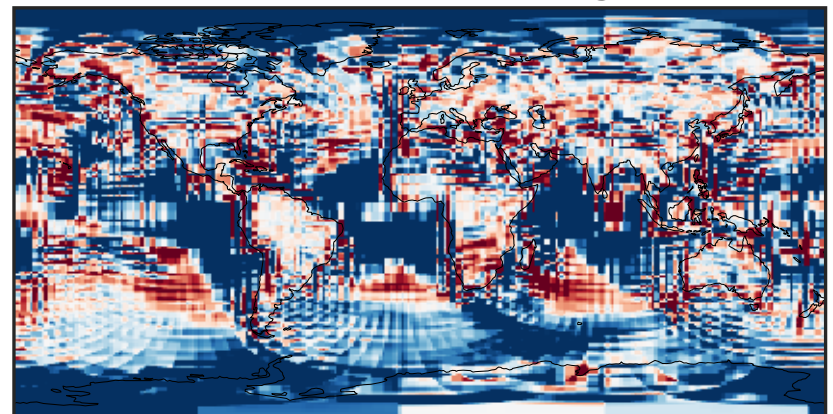
-0.003 0.000 0.003
ppb

Ratio (1x1.25)
Dev/Ref, Dynamic Range



1e-03 1e-02 1e-01 1 10 100 1000
unitless

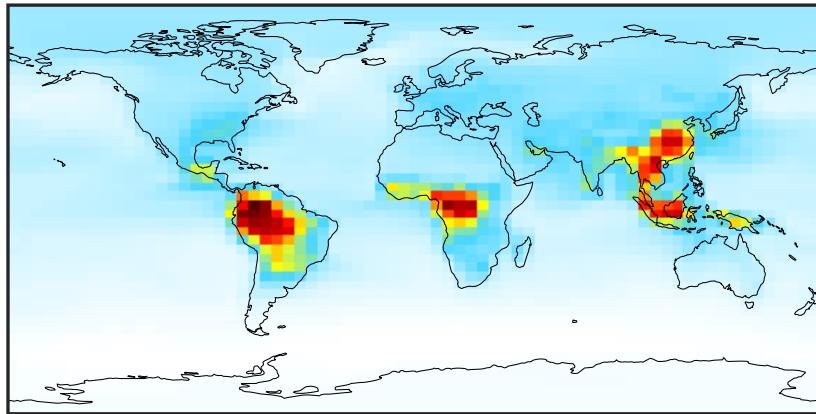
Ratio (1x1.25)
Dev/Ref, Fixed Range



0.50 0.75 1.00 1.50 2.00
unitless

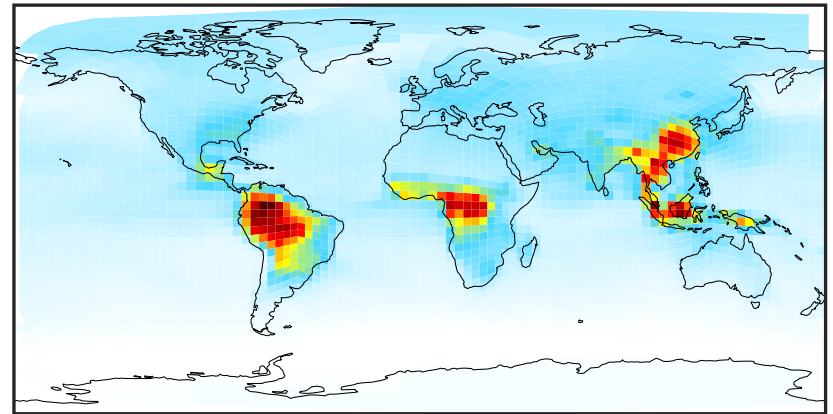
SpeciesConcVV_ACET (Apr2019)

14.3.0-rc.0 (Ref)
4.0x5.0



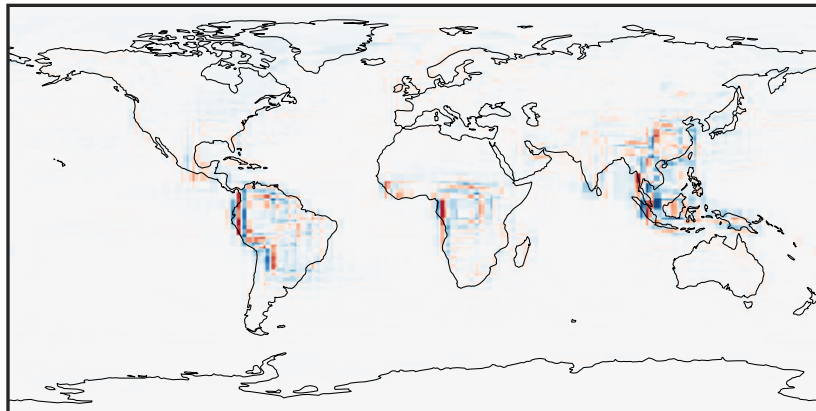
0.124 1.529 2.935 4.340 5.746
ppb

14.3.0-rc.0 (Dev)
c24



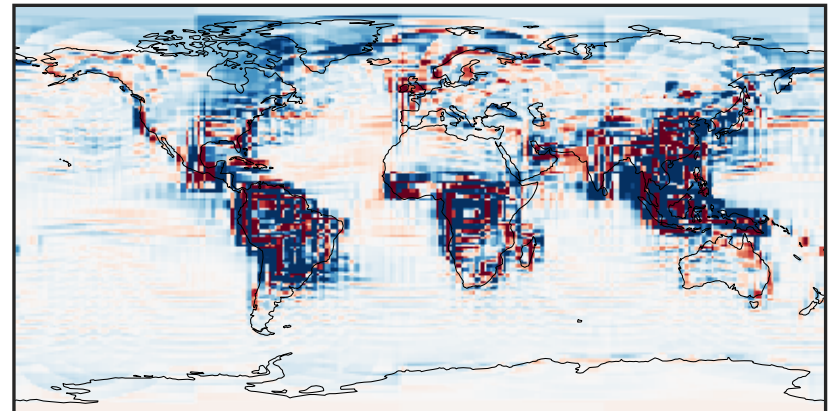
0.124 1.529 2.935 4.340 5.746
ppb

Difference (1x1.25)
Dev - Ref, Dynamic Range



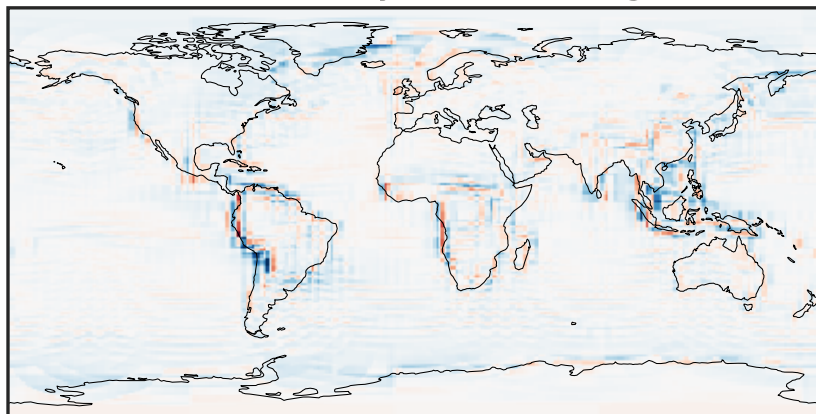
-1.810 -0.905 0.000 0.905 1.810
ppb

Difference (1x1.25)
Dev - Ref, Restricted Range [5%,95%]



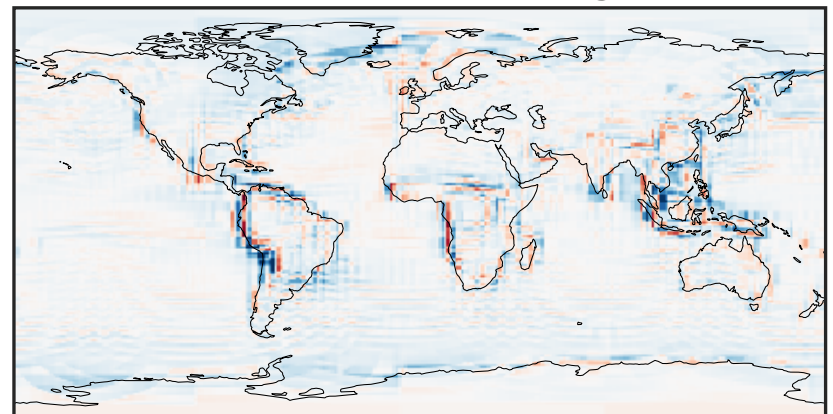
-0.1416 -0.0708 0.0000 0.0708 0.1416
ppb

Ratio (1x1.25)
Dev/Ref, Dynamic Range



0.388 0.694 1.000 1.789 2.578
unitless

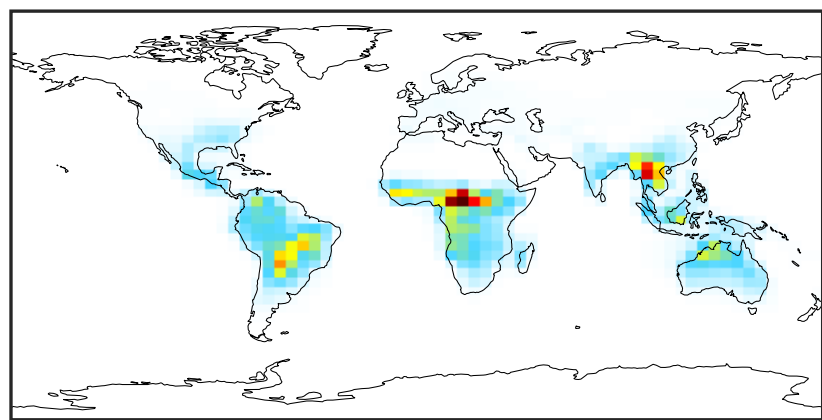
Ratio (1x1.25)
Dev/Ref, Fixed Range



0.50 0.75 1.00 1.50 2.00
unitless

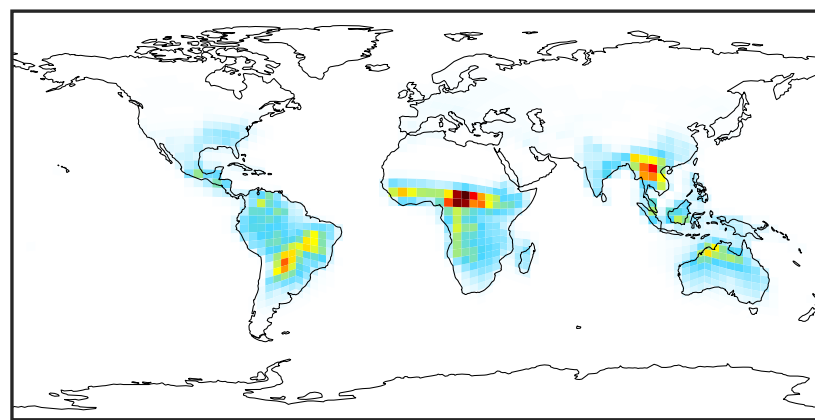
SpeciesConcVV_HAC (Apr2019)

14.3.0-rc.0 (Ref)
4.0x5.0



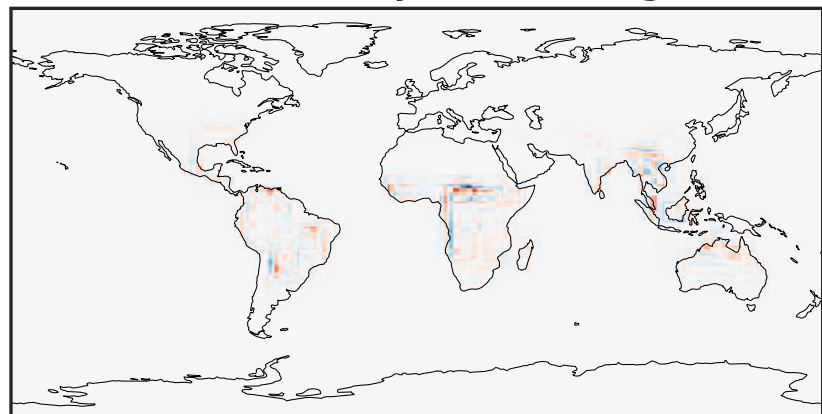
0.000 0.251 0.501 0.752 1.003
ppb

14.3.0-rc.0 (Dev)
c24



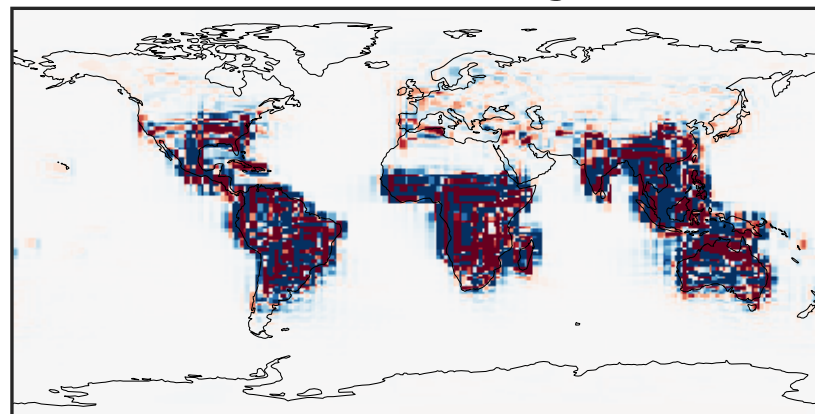
0.000 0.251 0.501 0.752 1.003
ppb

Difference (1x1.25)
Dev - Ref, Dynamic Range



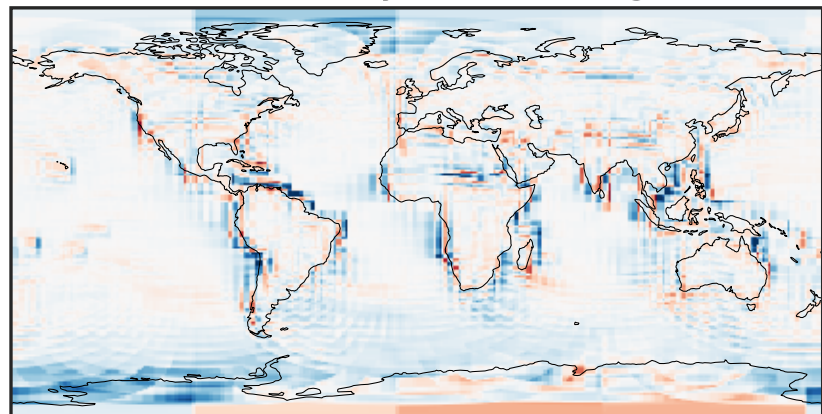
-0.525 -0.262 0.000 0.262 0.525
ppb

Difference (1x1.25)
Dev - Ref, Restricted Range [5%,95%]



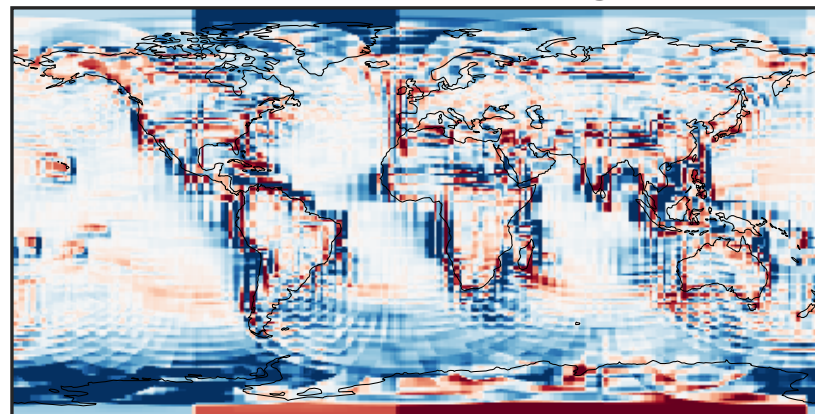
-0.005 0.000 0.005
ppb

Ratio (1x1.25)
Dev/Ref, Dynamic Range



0.102 0.551 1.000 5.387 9.774
unitless

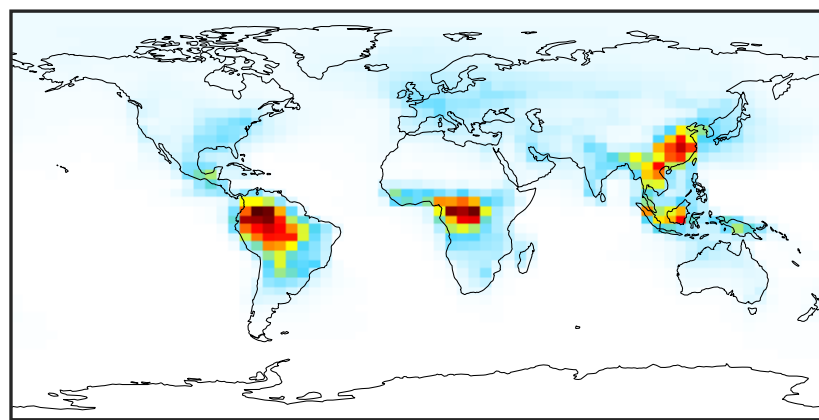
Ratio (1x1.25)
Dev/Ref, Fixed Range



0.50 0.75 1.00 1.50 2.00
unitless

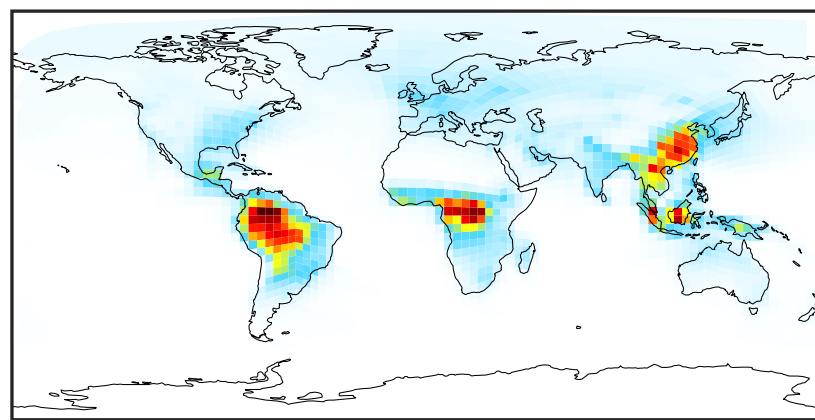
SpeciesConcVV_MEK (Apr2019)

14.3.0-rc.0 (Ref)
4.0x5.0



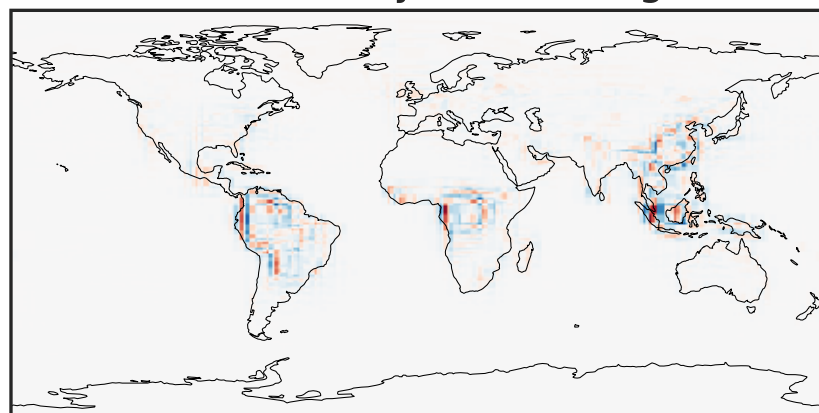
0.000 0.436 0.872 1.309 1.745
ppb

14.3.0-rc.0 (Dev)
c24



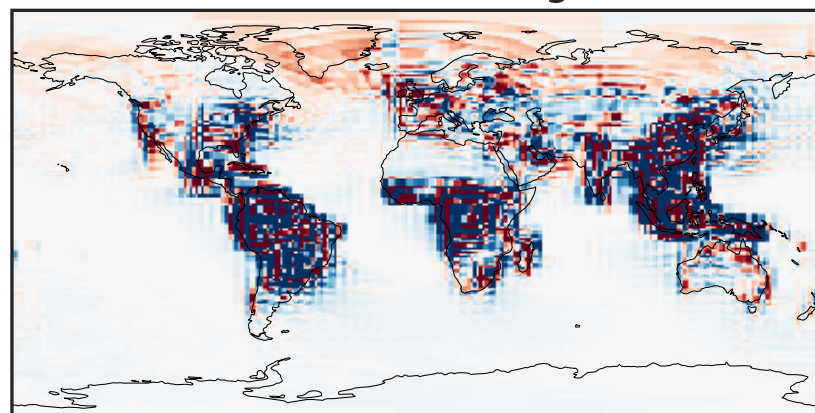
0.000 0.436 0.872 1.309 1.745
ppb

Difference (1x1.25)
Dev - Ref, Dynamic Range



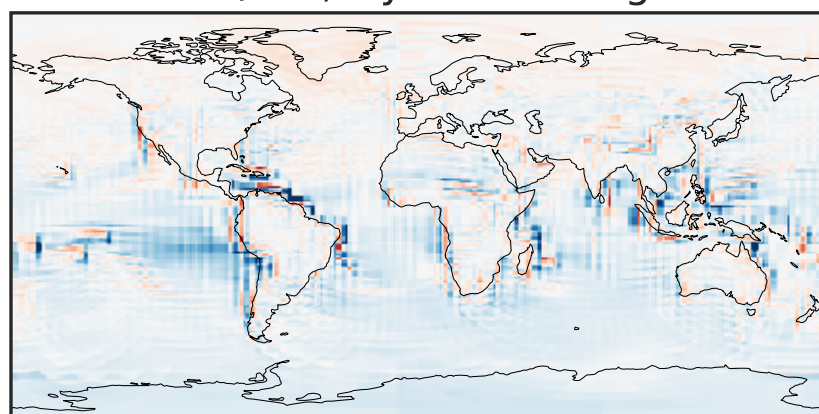
-0.664 -0.332 0.000 0.332 0.664
ppb

Difference (1x1.25)
Dev - Ref, Restricted Range [5%,95%]



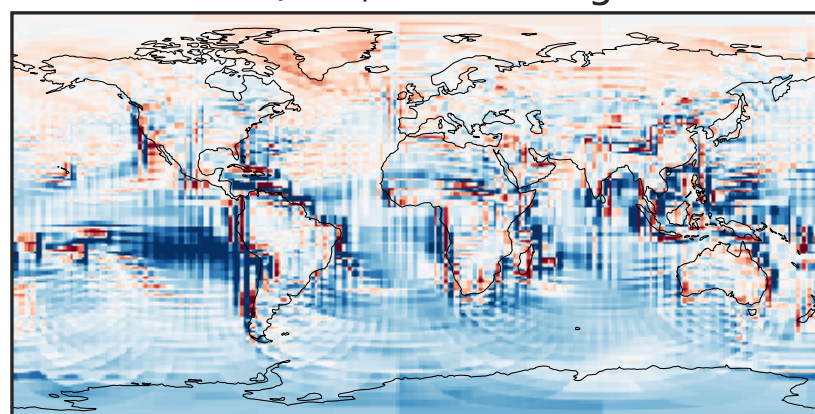
-0.02 0.00 0.02
ppb

Ratio (1x1.25)
Dev/Ref, Dynamic Range



0.135 0.568 1.000 4.193 7.387
unitless

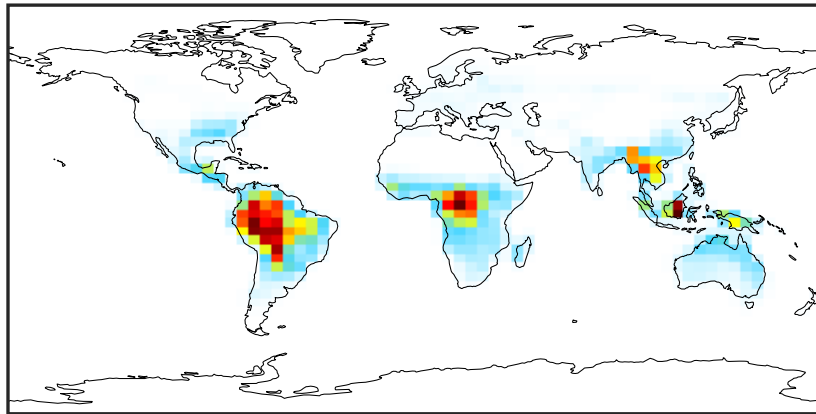
Ratio (1x1.25)
Dev/Ref, Fixed Range



0.50 0.75 1.00 1.50 2.00
unitless

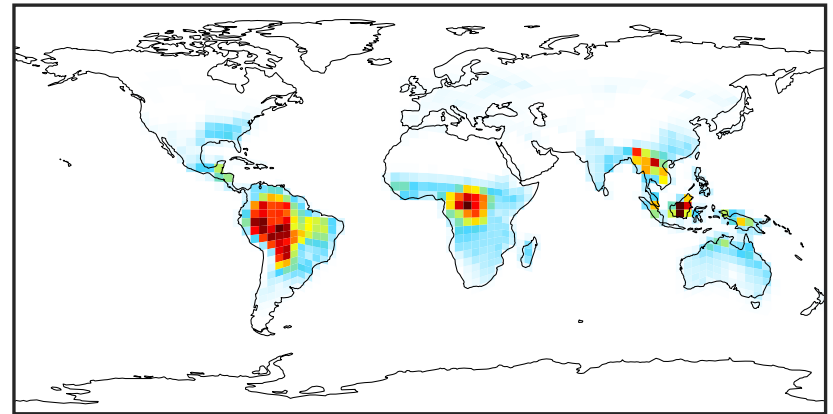
SpeciesConcVW_MVK (Apr2019)

14.3.0-rc.0 (Ref)
4.0x5.0



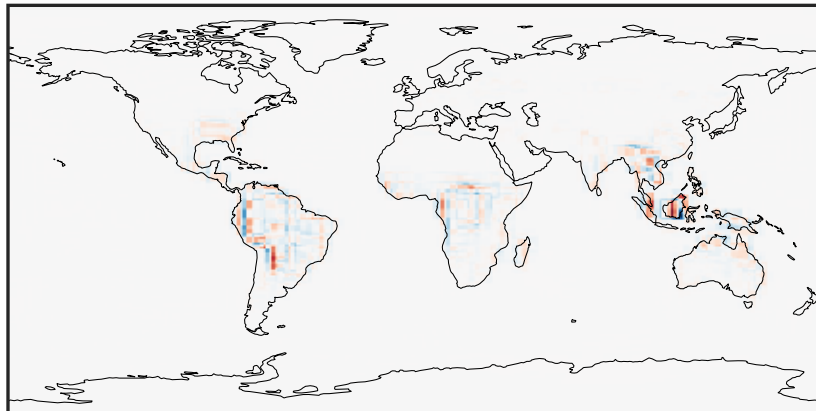
0.000 0.409 0.819 1.228 1.637
ppb

14.3.0-rc.0 (Dev)
c24



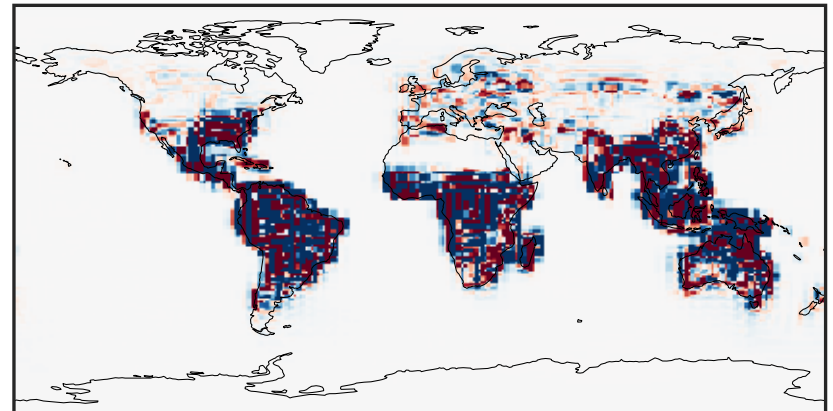
0.000 0.409 0.819 1.228 1.637
ppb

Difference (1x1.25)
Dev - Ref, Dynamic Range



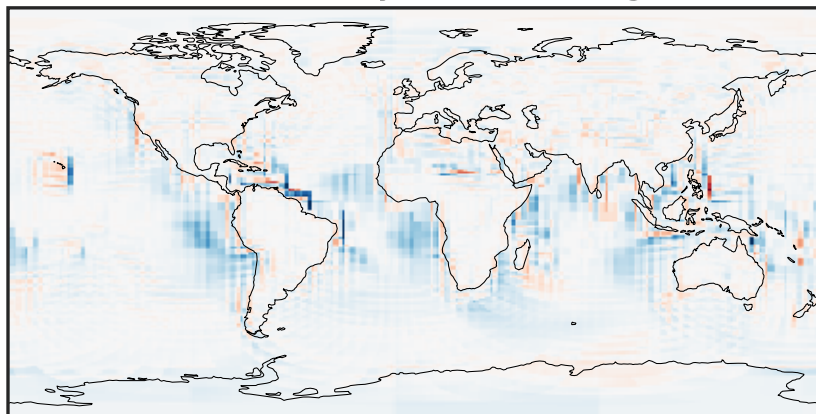
-1.016 -0.508 0.000 0.508 1.016
ppb

Difference (1x1.25)
Dev - Ref, Restricted Range [5%,95%]



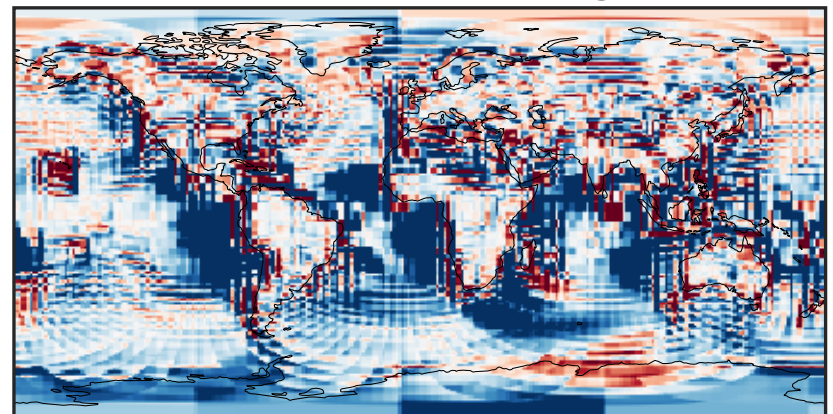
-0.008 0.000 0.008
ppb

Ratio (1x1.25)
Dev/Ref, Dynamic Range



1e-03 1e-02 1e-01 1 10 100 1000
unitless

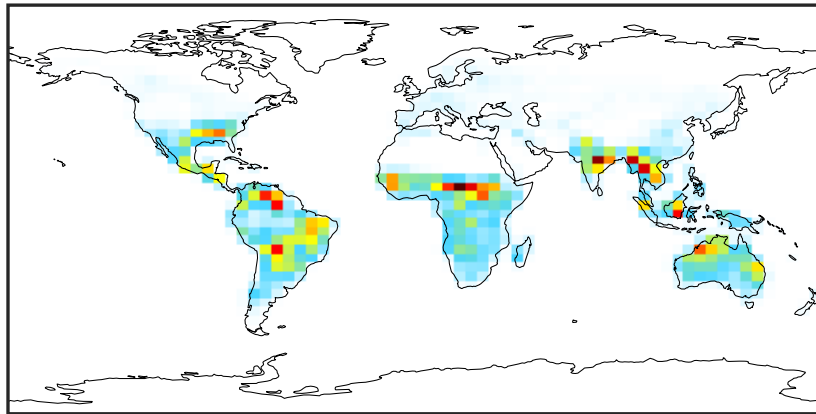
Ratio (1x1.25)
Dev/Ref, Fixed Range



0.50 0.75 1.00 1.50 2.00
unitless

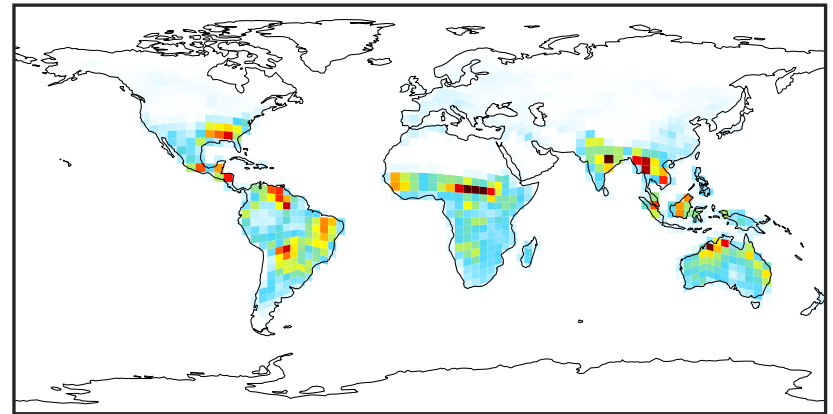
SpeciesConcVV_ISOPN (Apr2019)

14.3.0-rc.0 (Ref)
4.0x5.0



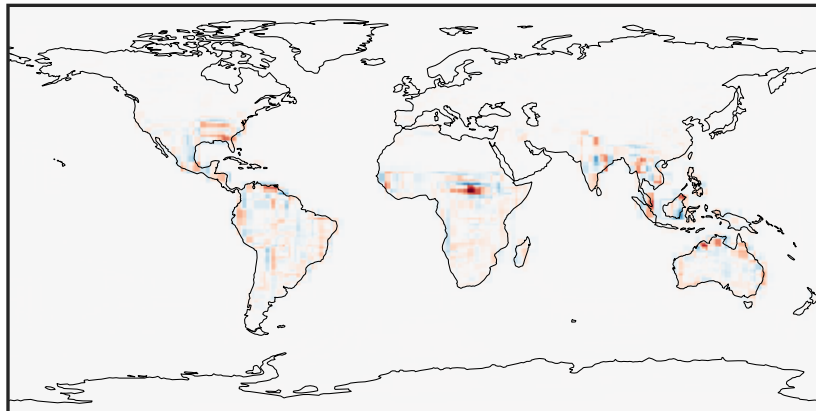
0.000 0.008 0.016 0.024
ppb

14.3.0-rc.0 (Dev)
c24



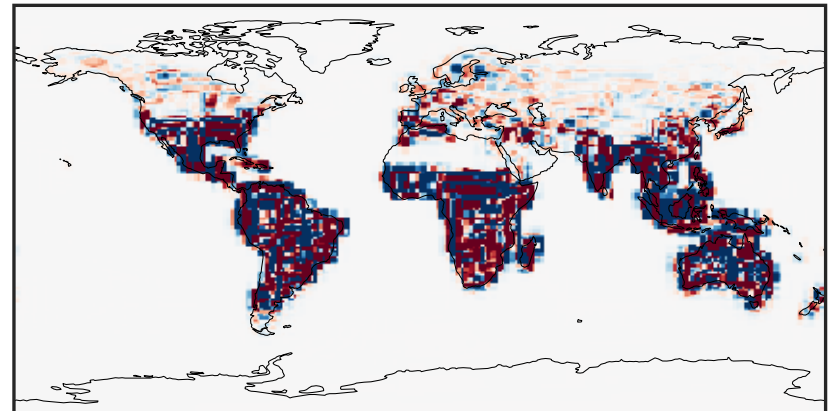
0.000 0.008 0.016 0.024
ppb

Difference (1x1.25)
Dev - Ref, Dynamic Range



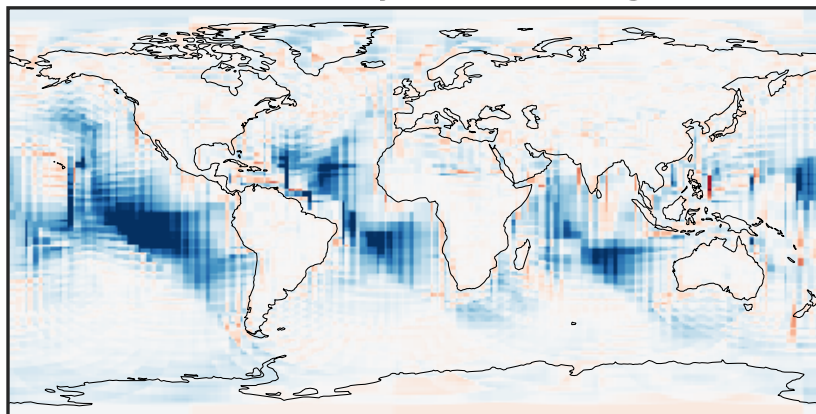
-0.015 0.000 0.015
ppb

Difference (1x1.25)
Dev - Ref, Restricted Range [5%,95%]



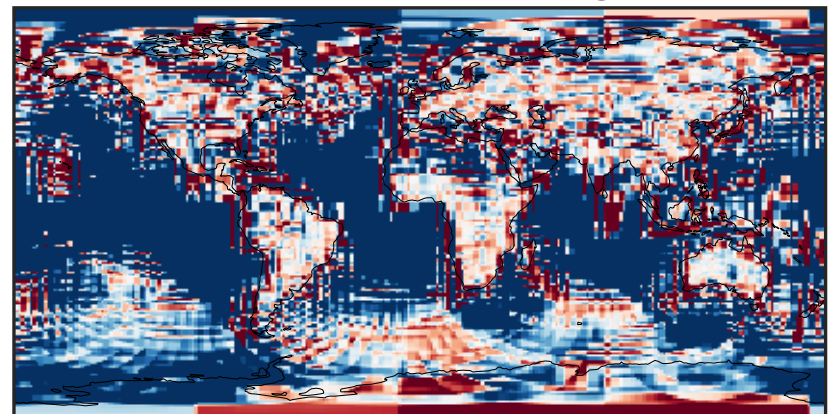
-0.00025 0.00000 0.00025
ppb

Ratio (1x1.25)
Dev/Ref, Dynamic Range



unitless

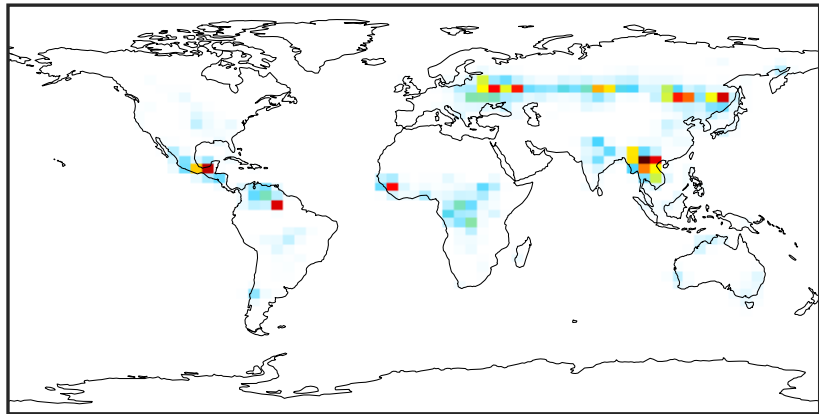
Ratio (1x1.25)
Dev/Ref, Fixed Range



0.50 0.75 1.00 1.50 2.00
unitless

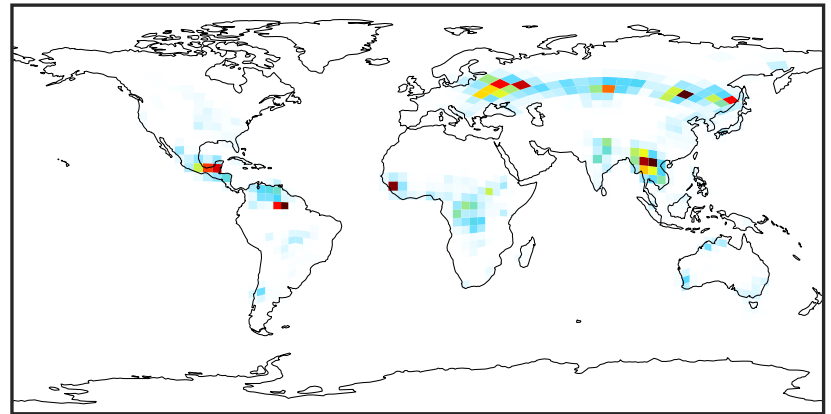
SpeciesConcVV_FURA (Apr2019)

14.3.0-rc.0 (Ref)
4.0x5.0



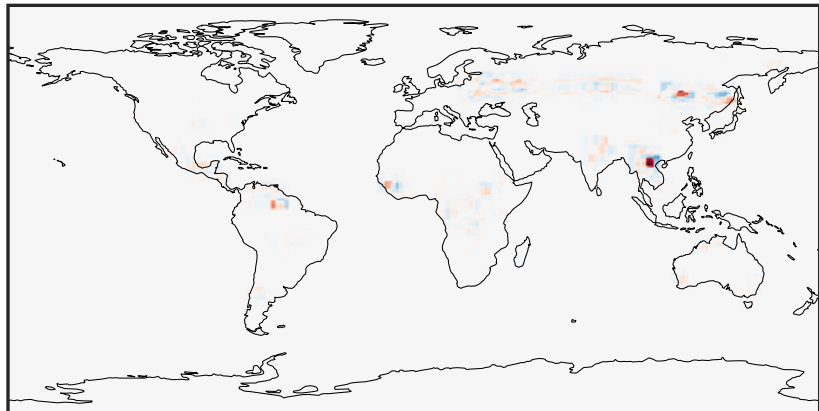
0.0000 0.0501 0.1002 0.1503 0.2005
ppb

14.3.0-rc.0 (Dev)
c24



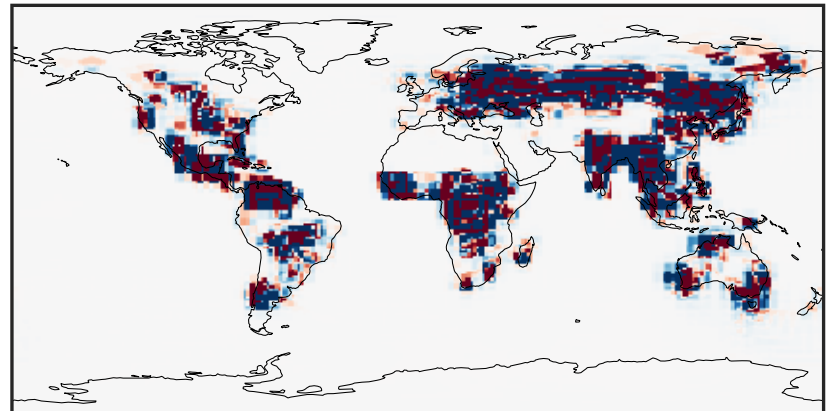
0.0000 0.0501 0.1002 0.1503 0.2005
ppb

Difference (1x1.25)
Dev - Ref, Dynamic Range



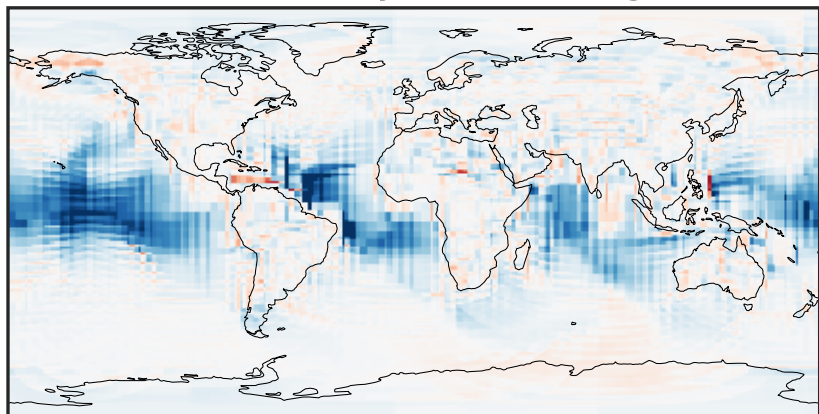
-0.2671 -0.1336 0.0000 0.1336 0.2671
ppb

Difference (1x1.25)
Dev - Ref, Restricted Range [5%,95%]



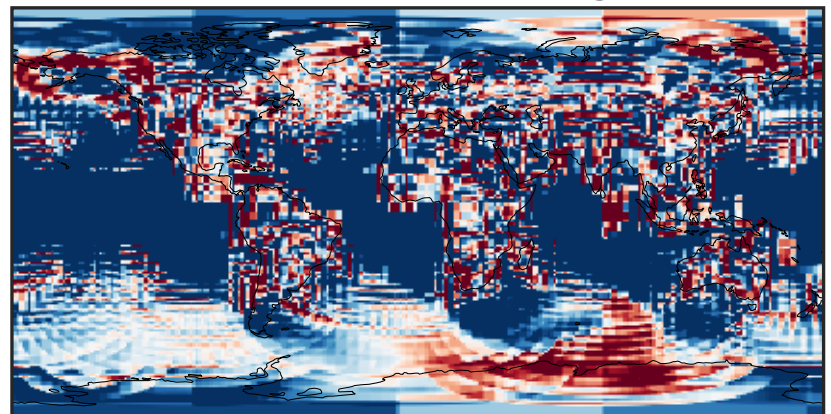
-0.0005 0.0000 0.0005
ppb

Ratio (1x1.25)
Dev/Ref, Dynamic Range



unitless

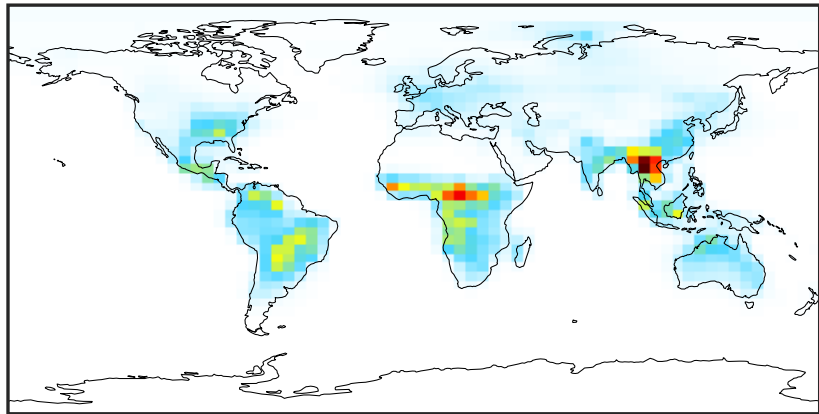
Ratio (1x1.25)
Dev/Ref, Fixed Range



0.50 0.75 1.00 1.50 2.00
unitless

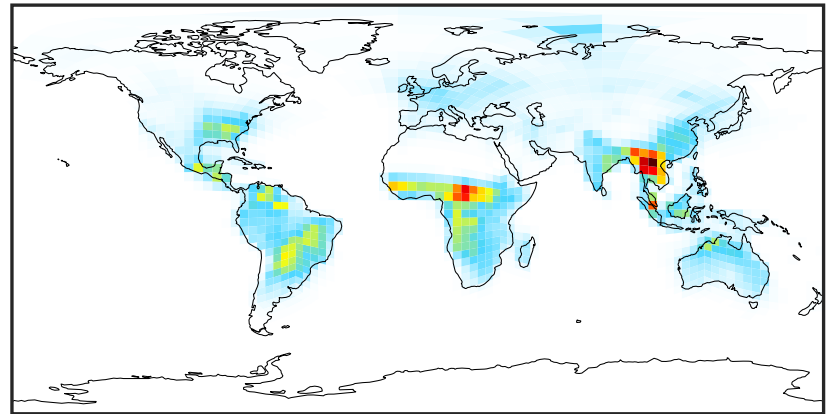
SpeciesConcVV_GLYC (Apr2019)

14.3.0-rc.0 (Ref)
4.0x5.0



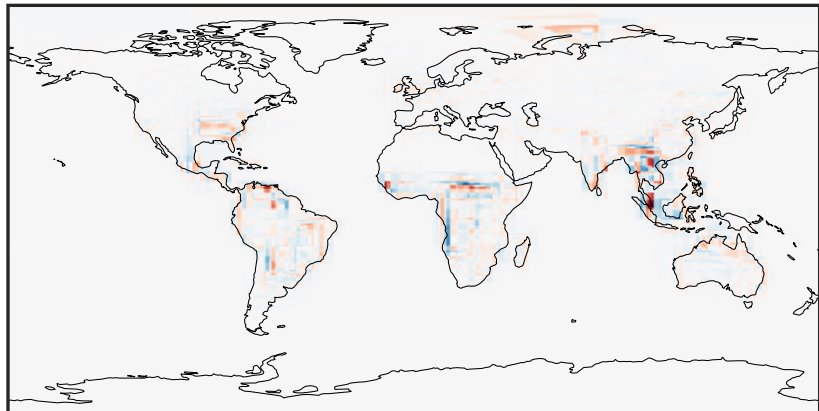
0.0000 0.2422 0.4845 0.7267 0.9689
ppb

14.3.0-rc.0 (Dev)
c24



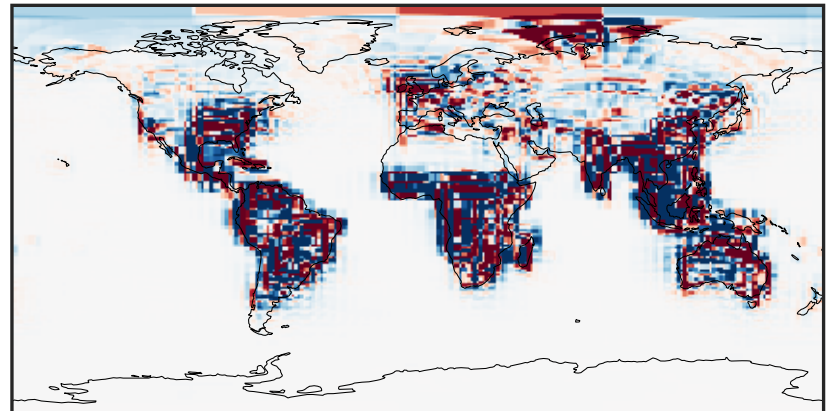
0.0000 0.2422 0.4845 0.7267 0.9689
ppb

Difference (1x1.25)
Dev - Ref, Dynamic Range



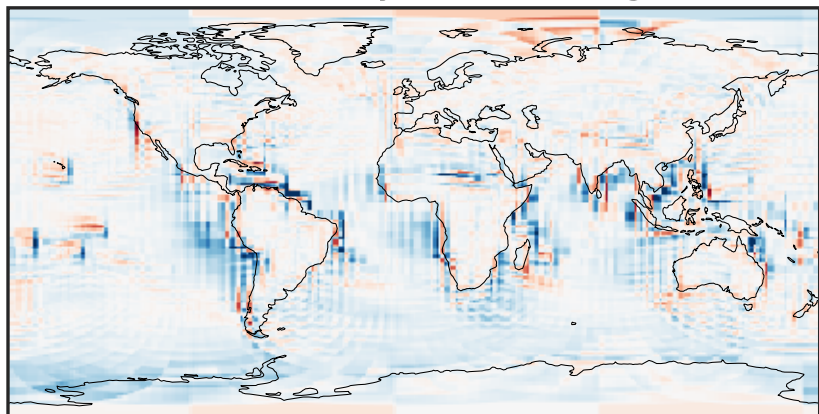
-0.386 -0.193 0.000 0.193 0.386
ppb

Difference (1x1.25)
Dev - Ref, Restricted Range [5%,95%]



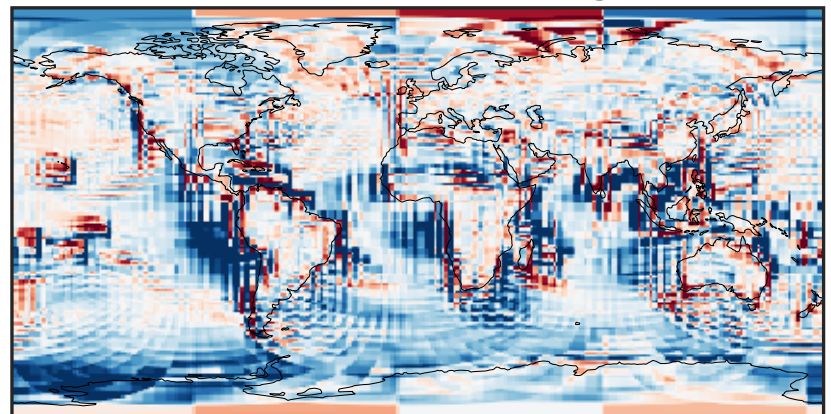
-0.008 0.000 0.008
ppb

Ratio (1x1.25)
Dev/Ref, Dynamic Range



1e-01 1 10
unitless

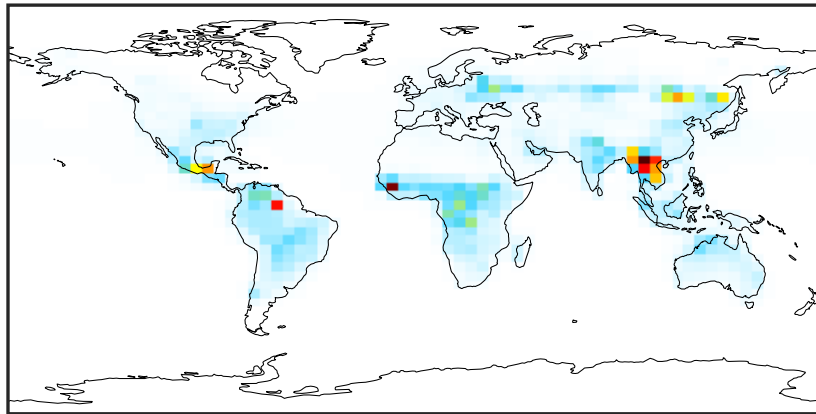
Ratio (1x1.25)
Dev/Ref, Fixed Range



0.50 0.75 1.00 1.50 2.00
unitless

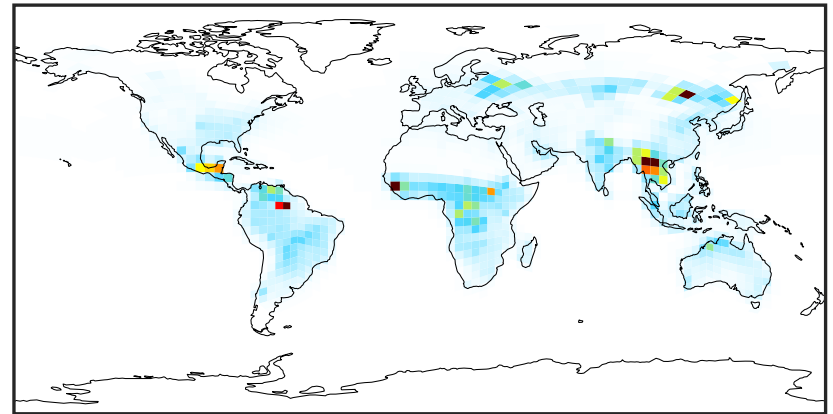
SpeciesConcVV_GLYX (Apr2019)

14.3.0-rc.0 (Ref)
4.0x5.0



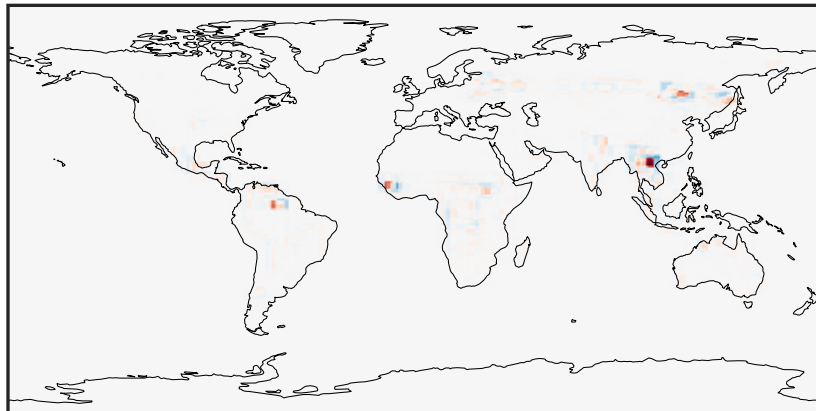
0.0000 0.0374 0.0748 0.1122 0.1495
ppb

14.3.0-rc.0 (Dev)
c24



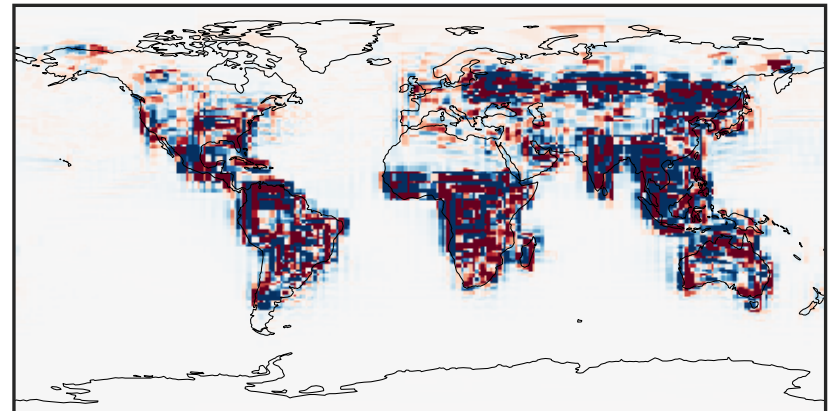
0.0000 0.0374 0.0748 0.1122 0.1495
ppb

Difference (1x1.25)
Dev - Ref, Dynamic Range



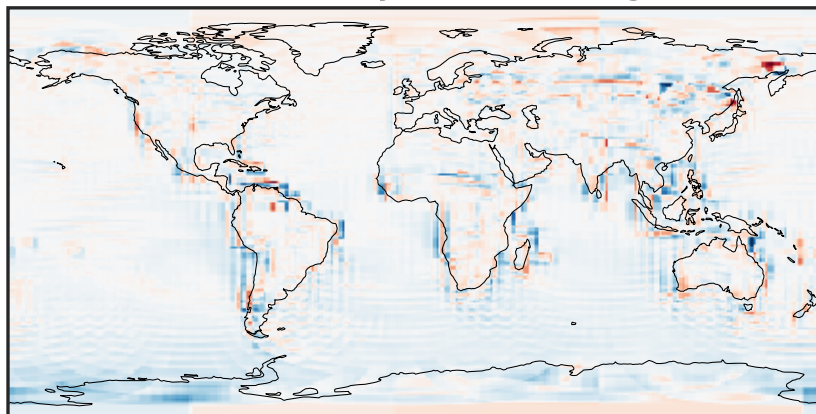
-0.1612 -0.0806 0.0000 0.0806 0.1612
ppb

Difference (1x1.25)
Dev - Ref, Restricted Range [5%,95%]



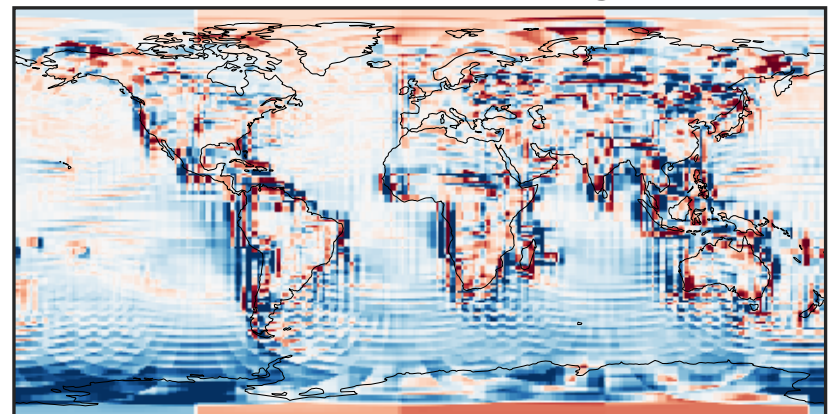
-0.0008 0.0000 0.0008
ppb

Ratio (1x1.25)
Dev/Ref, Dynamic Range



1e-01 1 10
unitless

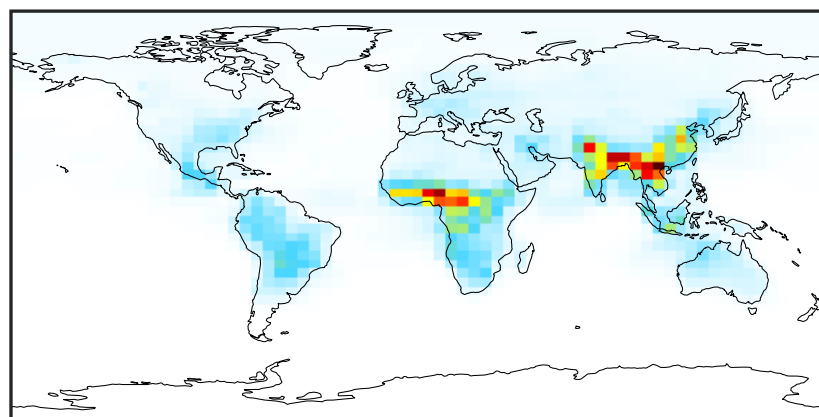
Ratio (1x1.25)
Dev/Ref, Fixed Range



0.50 0.75 1.00 1.50 2.00
unitless

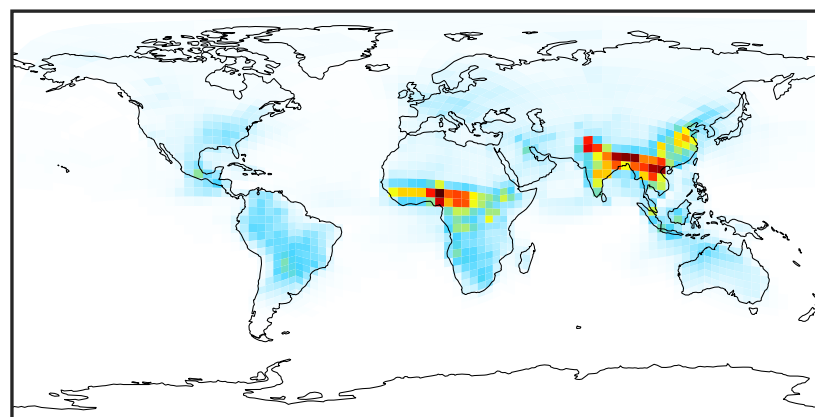
SpeciesConcVV_HCOOH (Apr2019)

14.3.0-rc.0 (Ref)
4.0x5.0



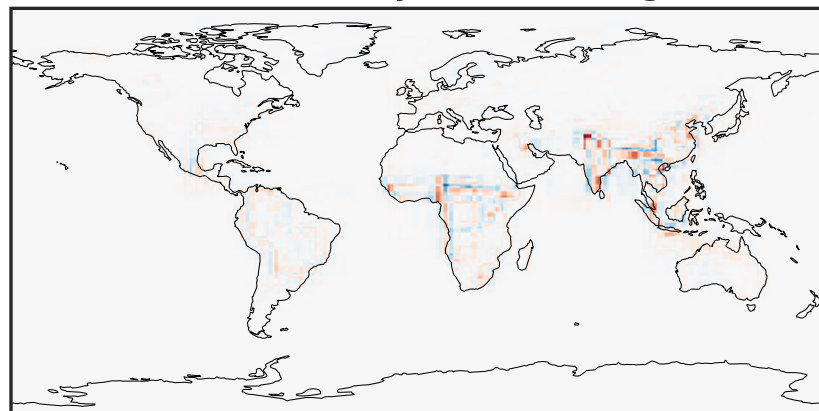
0.001 0.622 1.244 1.866 2.488
ppb

14.3.0-rc.0 (Dev)
c24



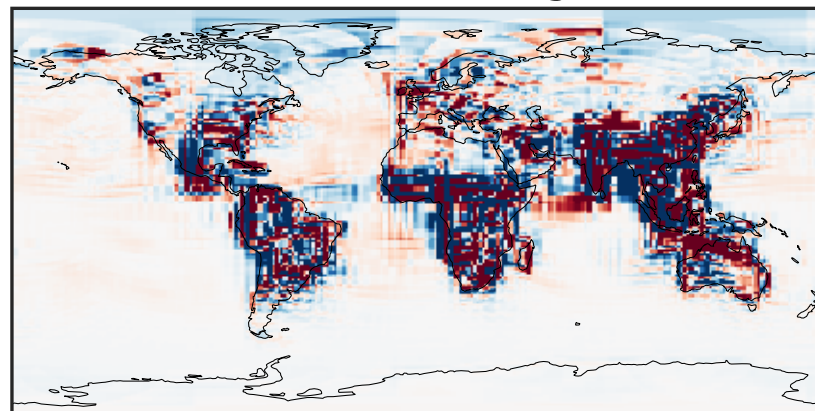
0.001 0.622 1.244 1.866 2.488
ppb

Difference (1x1.25)
Dev - Ref, Dynamic Range



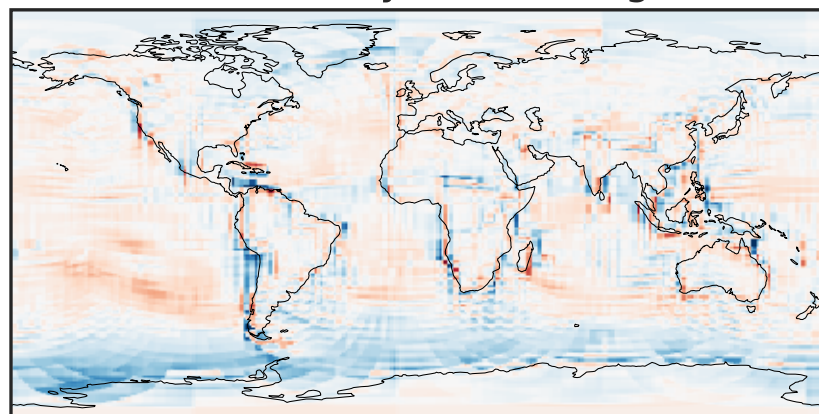
-1.111 -0.556 0.000 0.556 1.111
ppb

Difference (1x1.25)
Dev - Ref, Restricted Range [5%,95%]



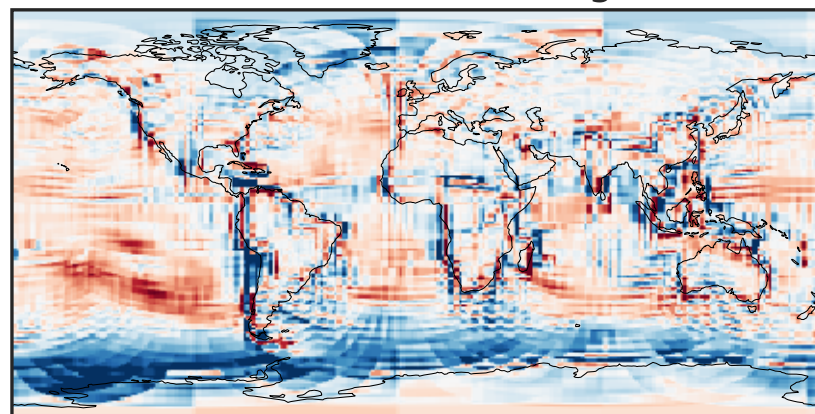
-0.015 0.000 0.015
ppb

Ratio (1x1.25)
Dev/Ref, Dynamic Range



0.178 0.589 1.000 3.310 5.619
unitless

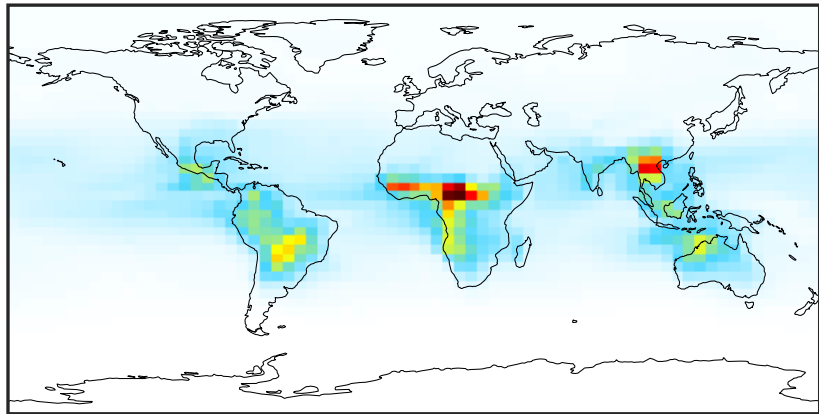
Ratio (1x1.25)
Dev/Ref, Fixed Range



0.50 0.75 1.00 1.50 2.00
unitless

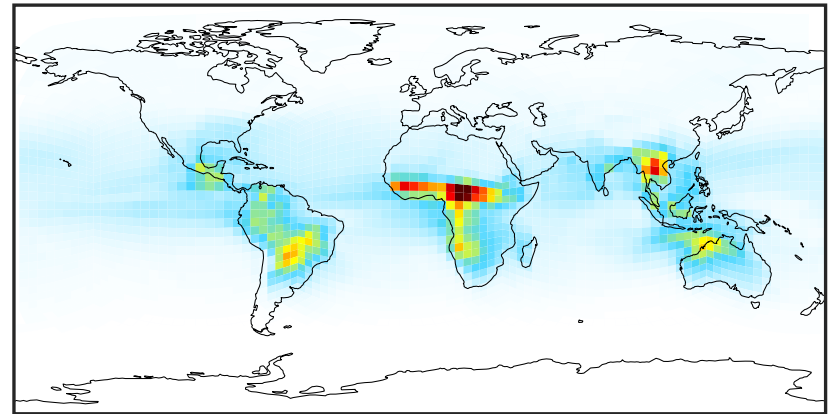
SpeciesConcVV_MAP (Apr2019)

14.3.0-rc.0 (Ref)
4.0x5.0



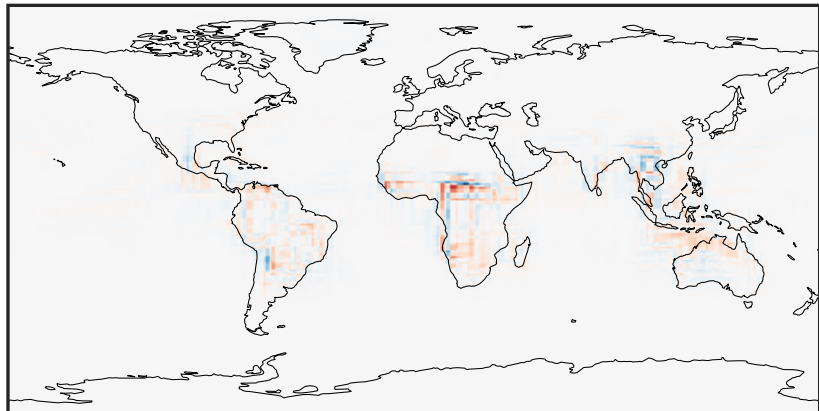
0.002 0.288 0.574 0.861 1.147
ppb

14.3.0-rc.0 (Dev)
c24



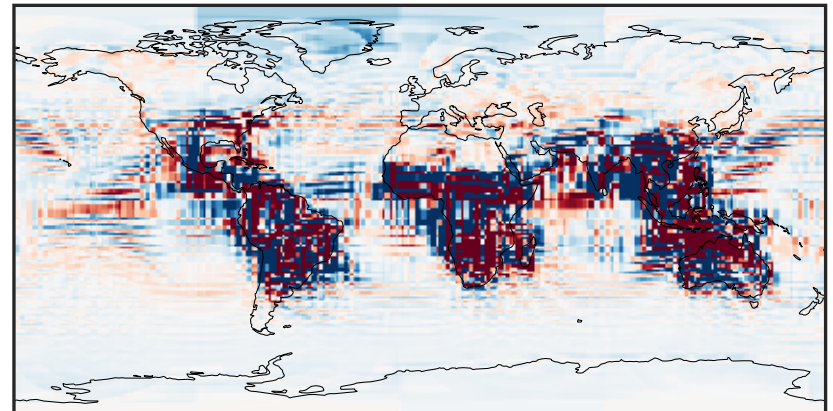
0.002 0.288 0.574 0.861 1.147
ppb

Difference (1x1.25)
Dev - Ref, Dynamic Range



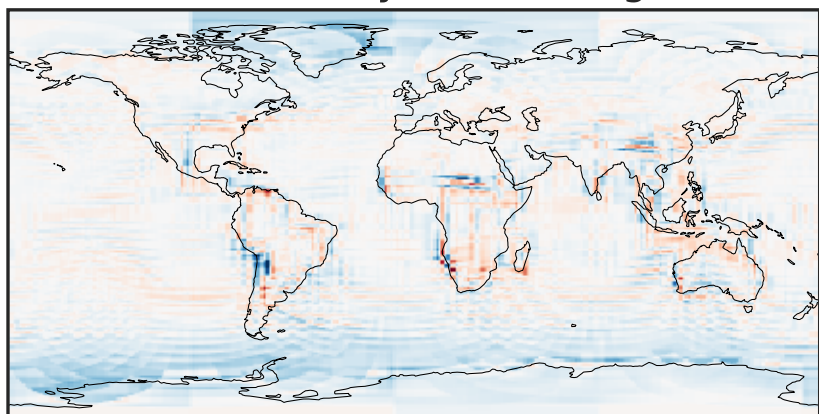
-0.506 -0.253 0.000 0.253 0.506
ppb

Difference (1x1.25)
Dev - Ref, Restricted Range [5%,95%]



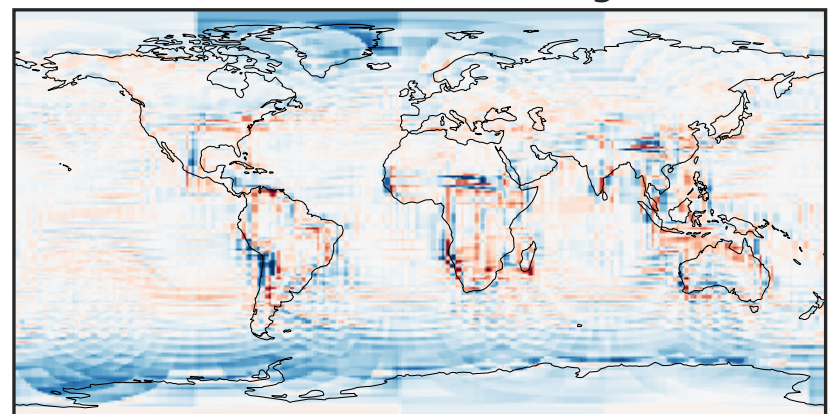
-0.006 0.000 0.006
ppb

Ratio (1x1.25)
Dev/Ref, Dynamic Range



0.308 0.654 1.000 2.125 3.251
unitless

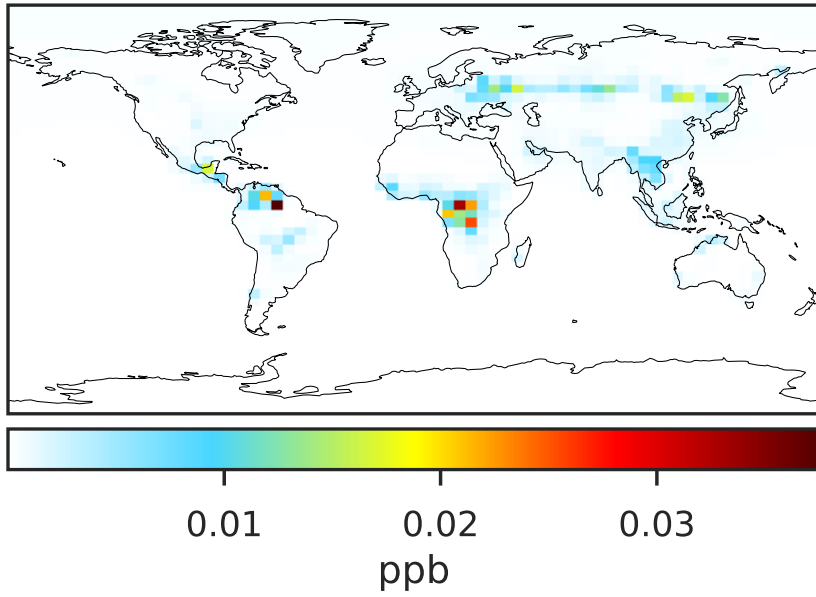
Ratio (1x1.25)
Dev/Ref, Fixed Range



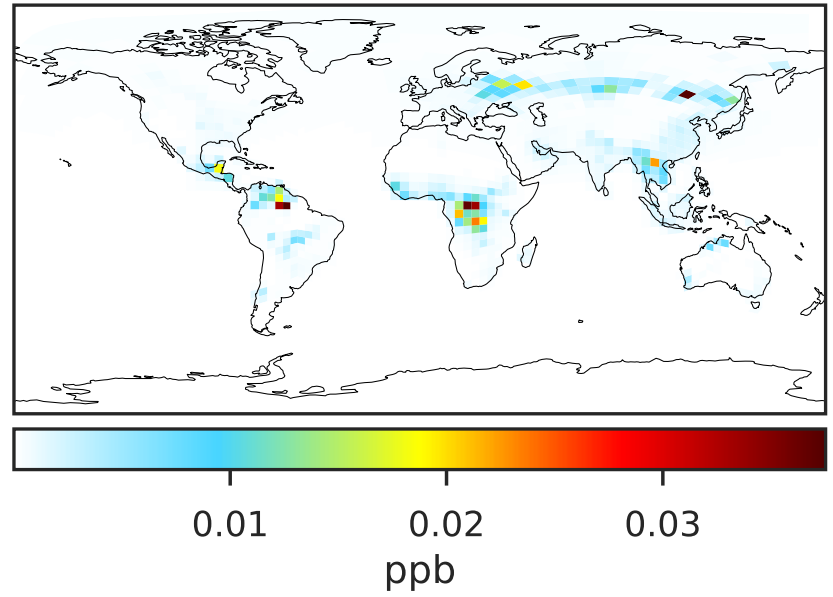
0.50 0.75 1.00 1.50 2.00
unitless

SpeciesConcVV_PHEN (Apr2019)

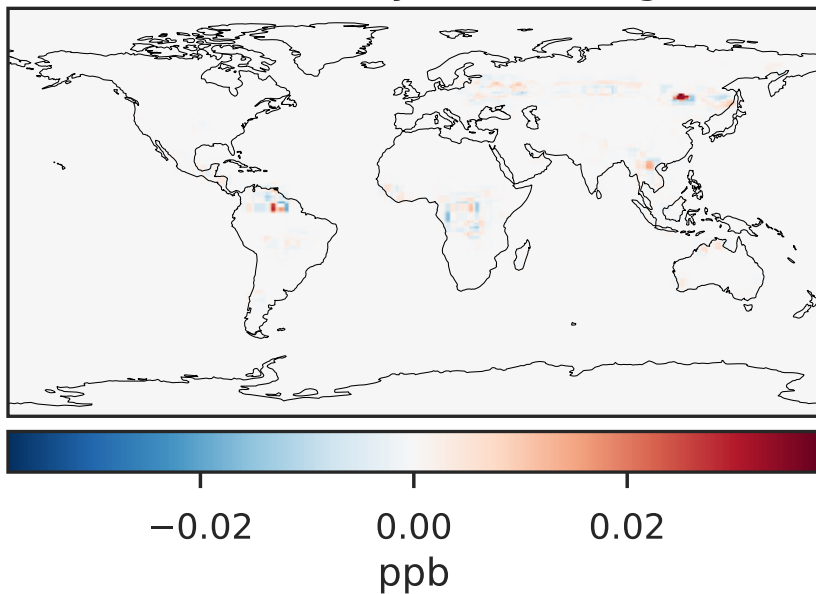
14.3.0-rc.0 (Ref)
4.0x5.0



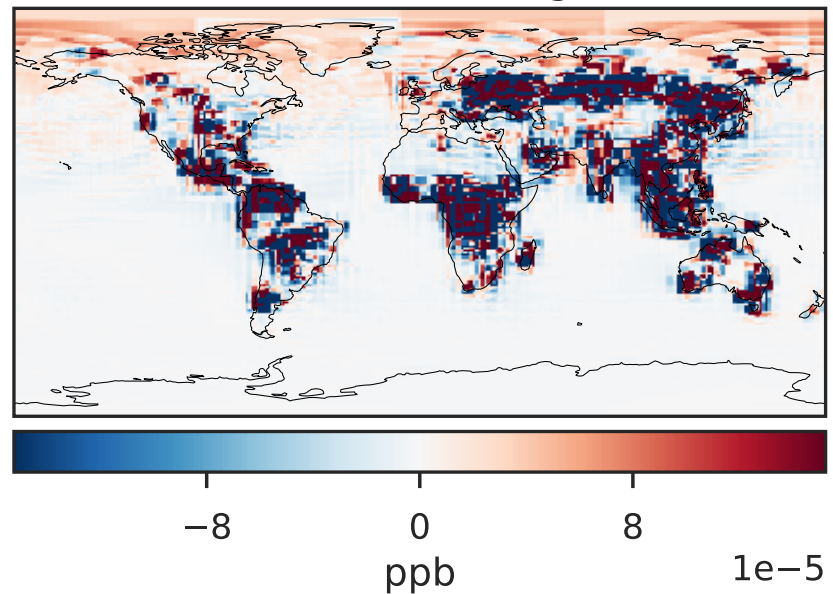
14.3.0-rc.0 (Dev)
c24



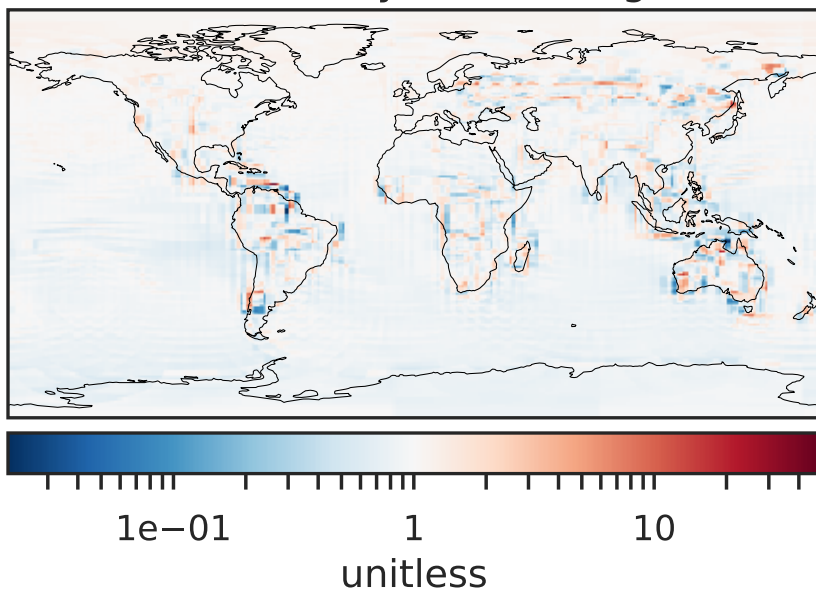
Difference (1x1.25)
Dev - Ref, Dynamic Range



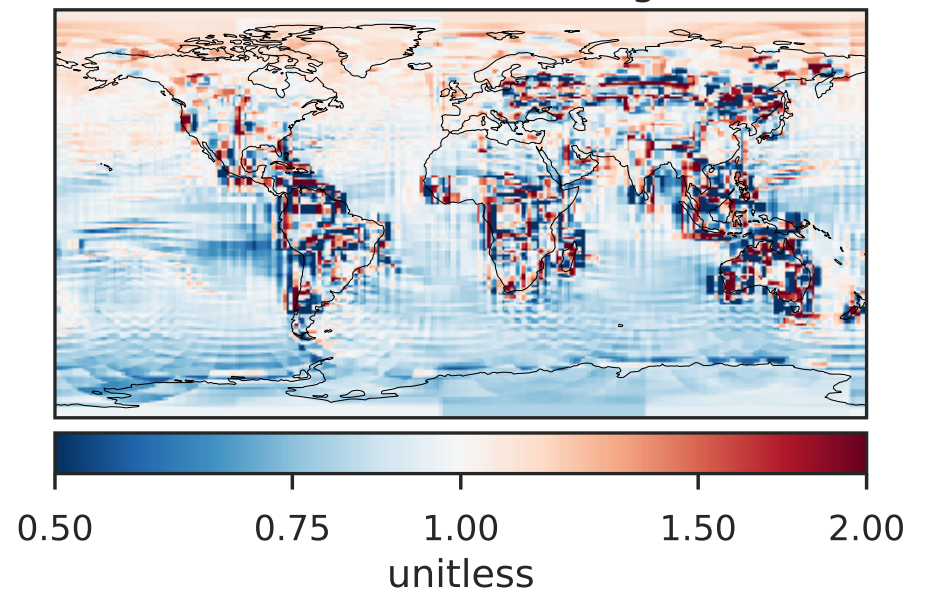
Difference (1x1.25)
Dev - Ref, Restricted Range [5%,95%]



Ratio (1x1.25)
Dev/Ref, Dynamic Range

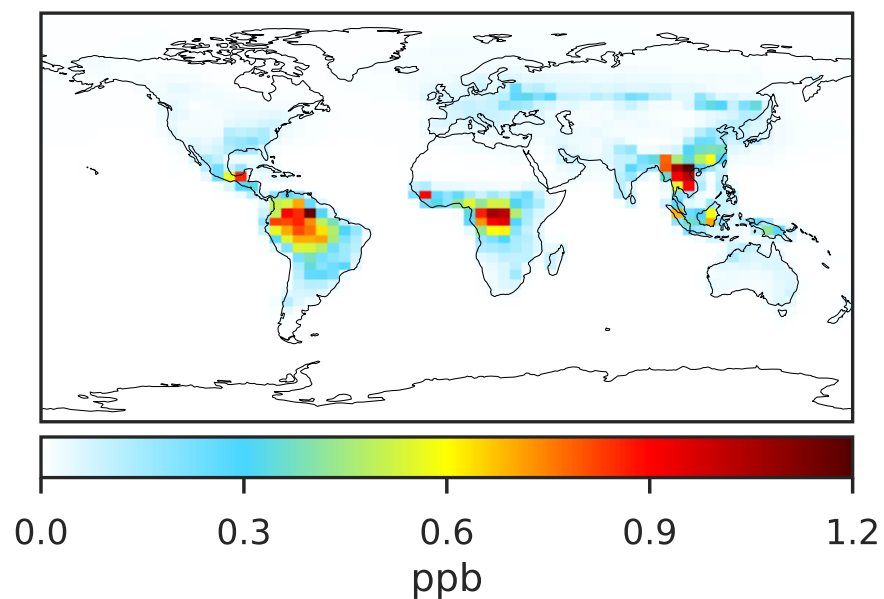


Ratio (1x1.25)
Dev/Ref, Fixed Range

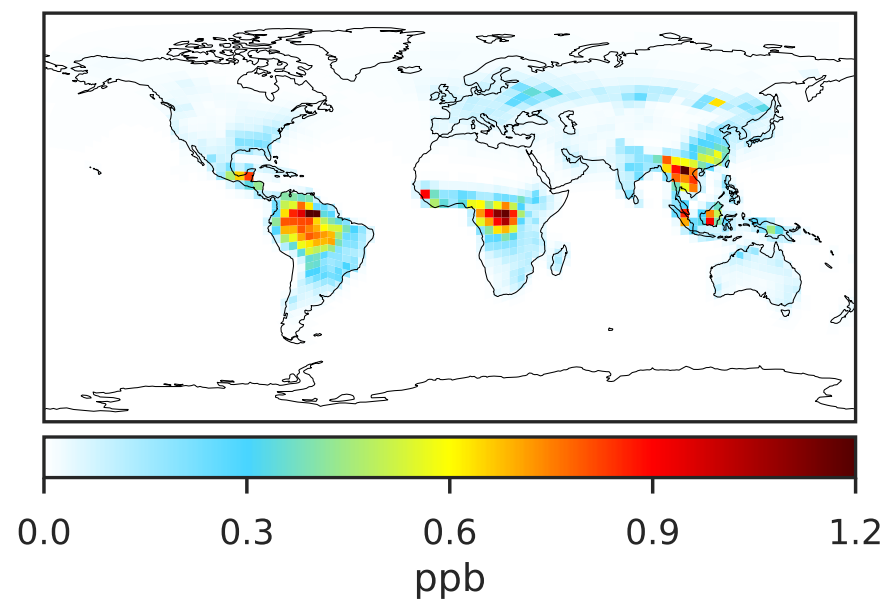


SpeciesConcVV_RCHO (Apr2019)

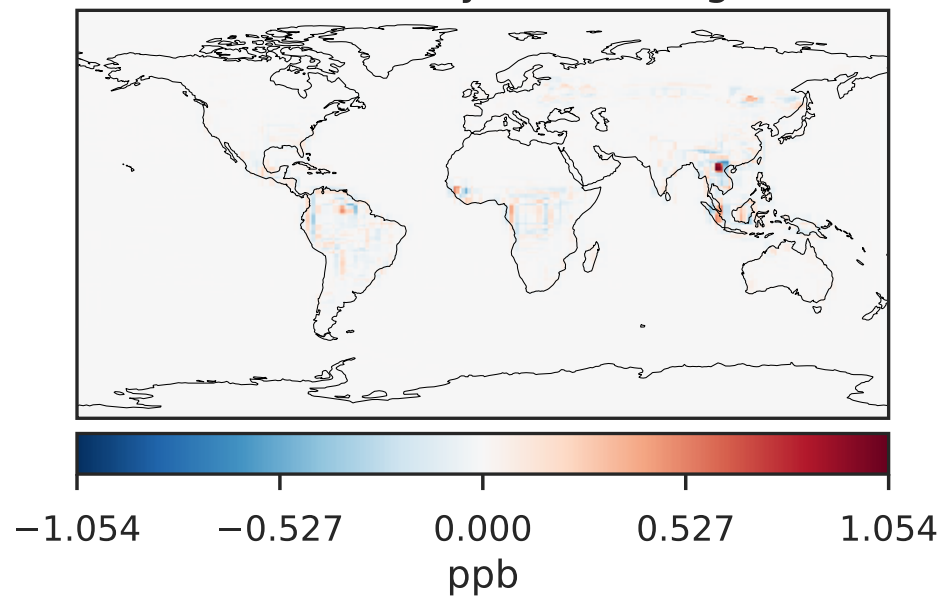
14.3.0-rc.0 (Ref)
4.0x5.0



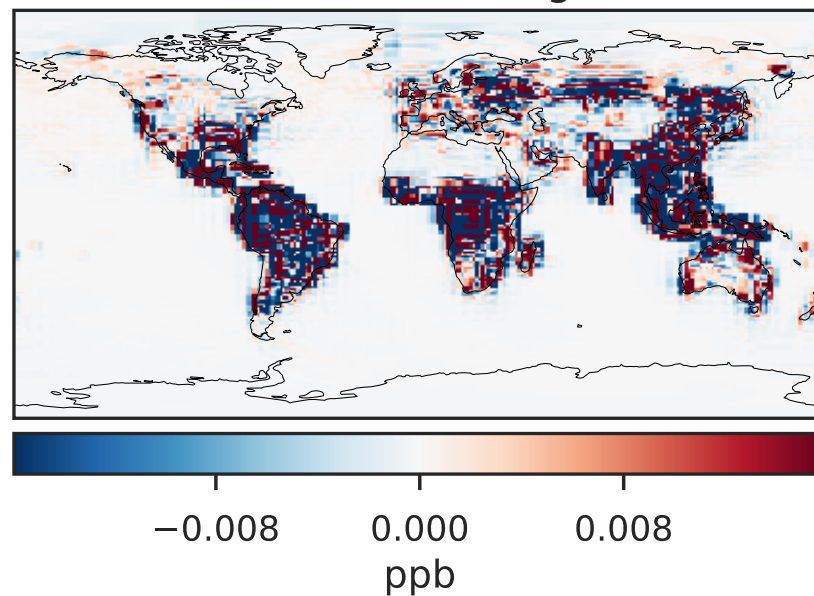
14.3.0-rc.0 (Dev)
c24



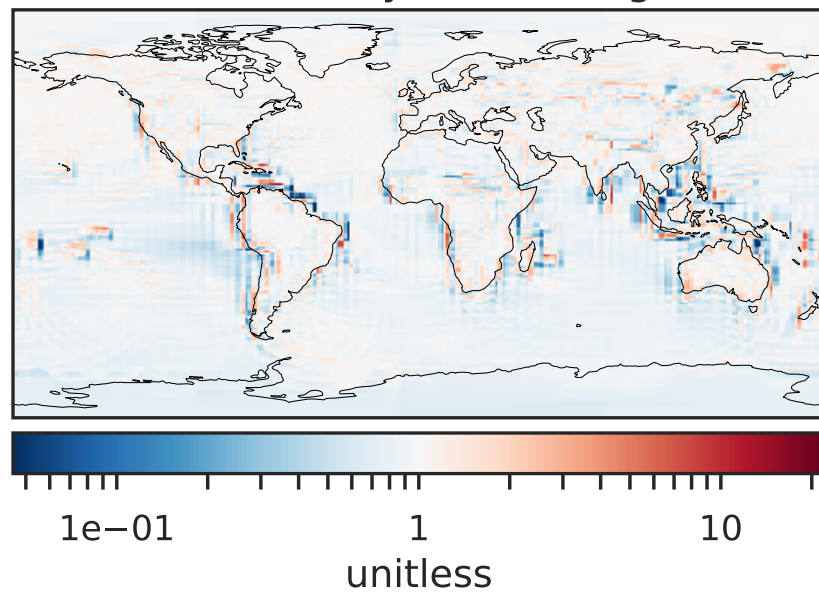
Difference (1x1.25)
Dev - Ref, Dynamic Range



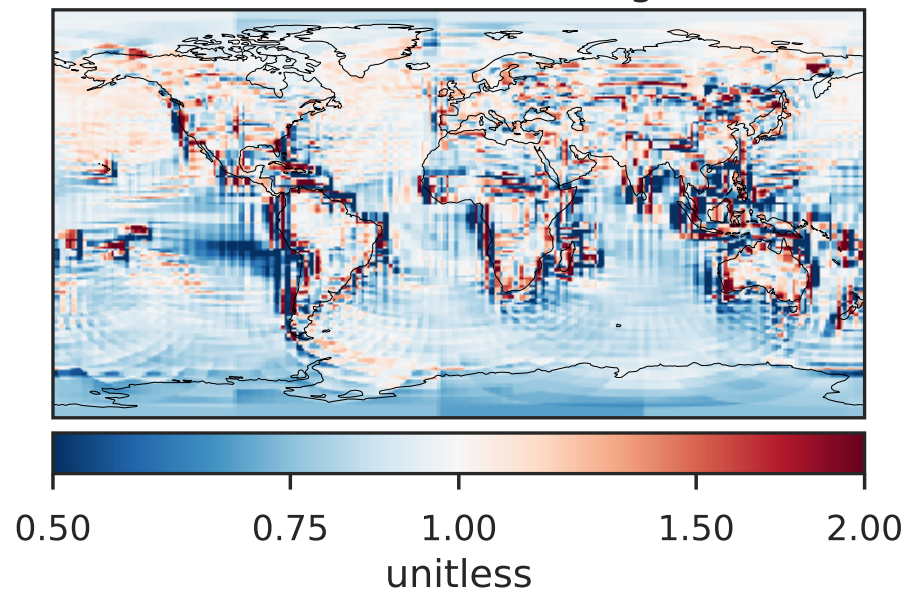
Difference (1x1.25)
Dev - Ref, Restricted Range [5%,95%]



Ratio (1x1.25)
Dev/Ref, Dynamic Range

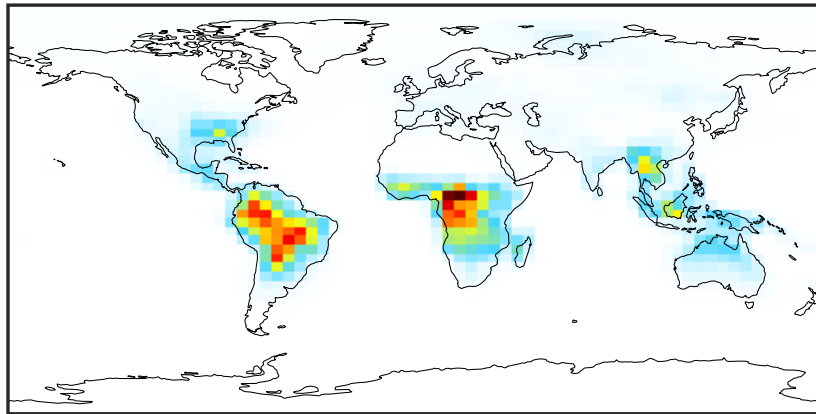


Ratio (1x1.25)
Dev/Ref, Fixed Range



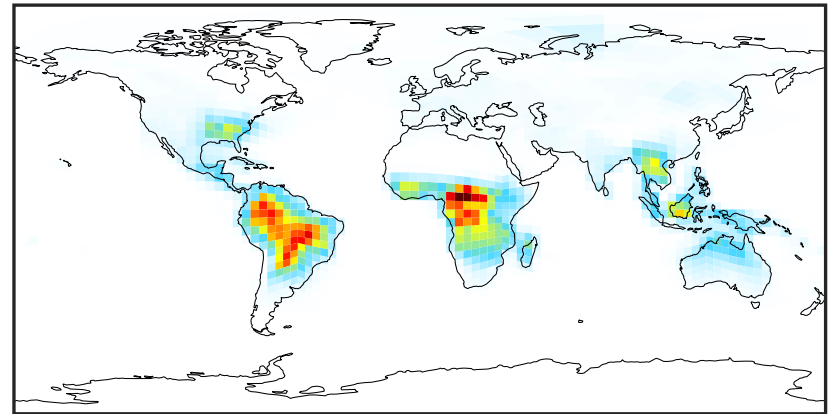
SpeciesConcVV_ETHP (Apr2019)

14.3.0-rc.0 (Ref)
4.0x5.0



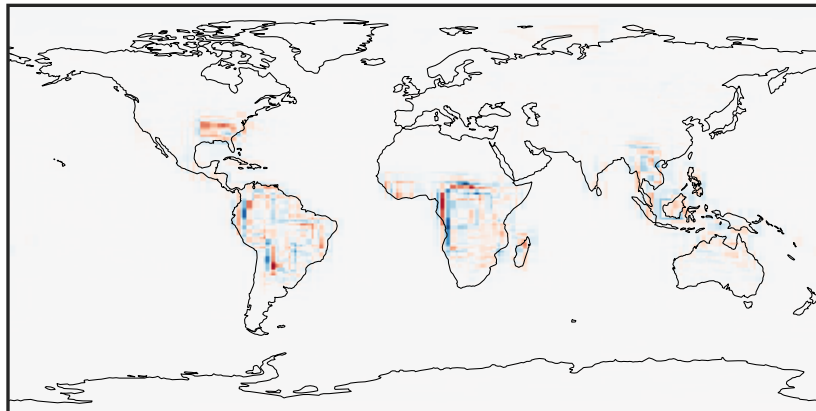
0.0000 0.0503 0.1005 0.1508 0.2010
ppb

14.3.0-rc.0 (Dev)
c24



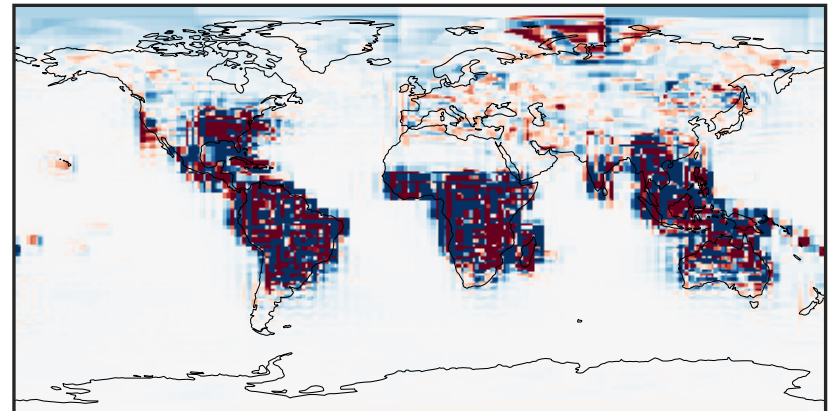
0.0000 0.0503 0.1005 0.1508 0.2010
ppb

Difference (1x1.25)
Dev - Ref, Dynamic Range



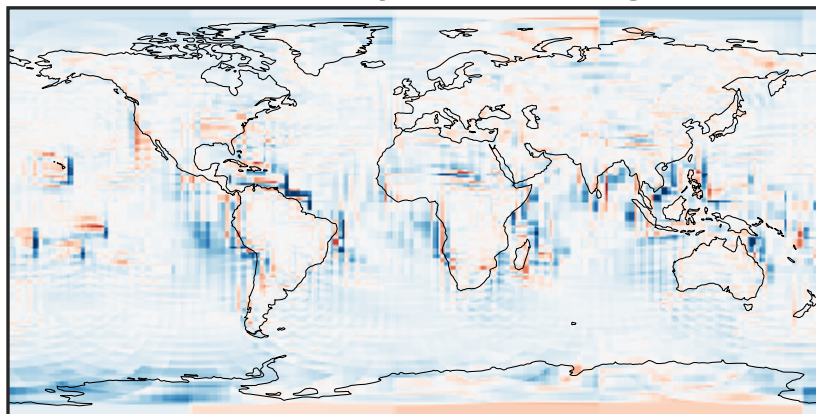
-0.0768 -0.0384 0.0000 0.0384 0.0768
ppb

Difference (1x1.25)
Dev - Ref, Restricted Range [5%,95%]



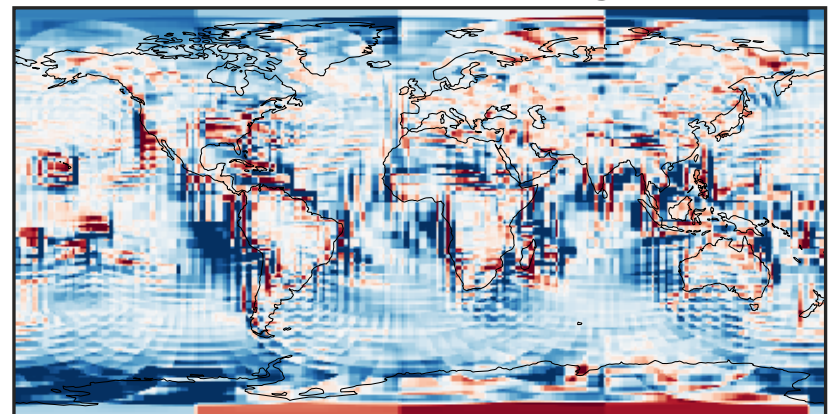
-0.0015 0.0000 0.0015
ppb

Ratio (1x1.25)
Dev/Ref, Dynamic Range



1e-01 1 10
unitless

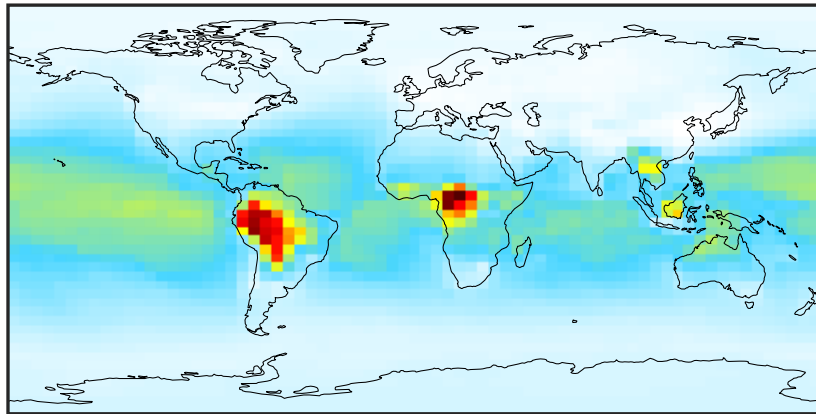
Ratio (1x1.25)
Dev/Ref, Fixed Range



0.50 0.75 1.00 1.50 2.00
unitless

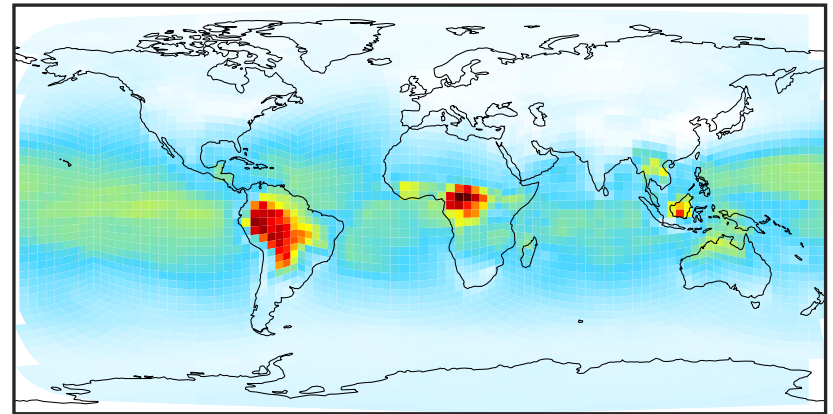
SpeciesConcVV_MP (Apr2019)

14.3.0-rc.0 (Ref)
4.0x5.0



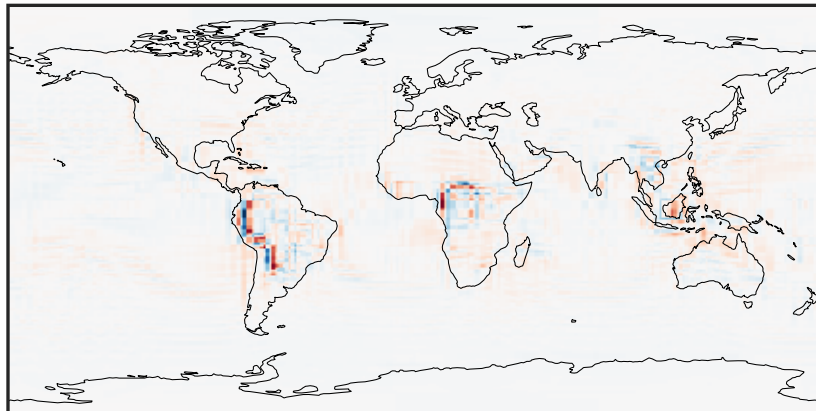
0.031 0.646 1.262 1.877 2.493
ppb

14.3.0-rc.0 (Dev)
c24



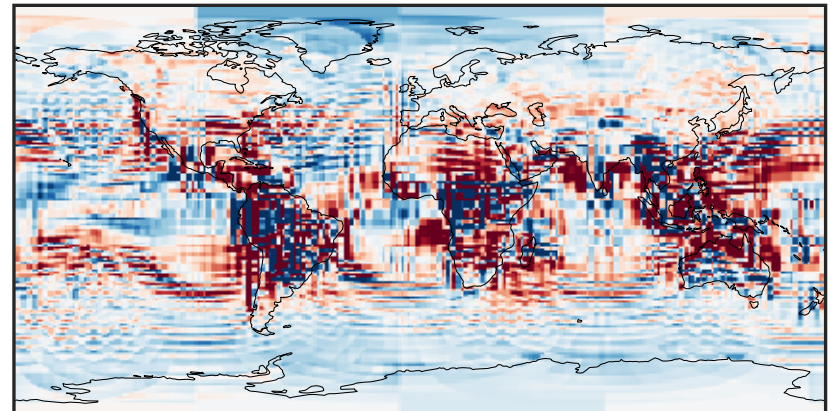
0.031 0.646 1.262 1.877 2.493
ppb

Difference (1x1.25)
Dev - Ref, Dynamic Range



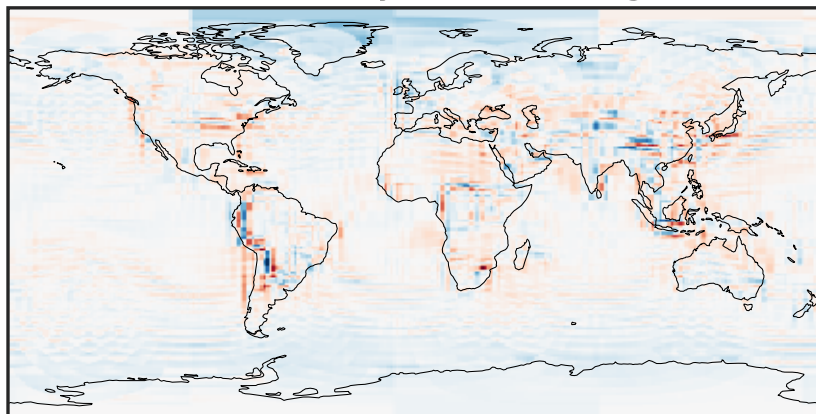
-0.869 -0.434 0.000 0.434 0.869
ppb

Difference (1x1.25)
Dev - Ref, Restricted Range [5%,95%]



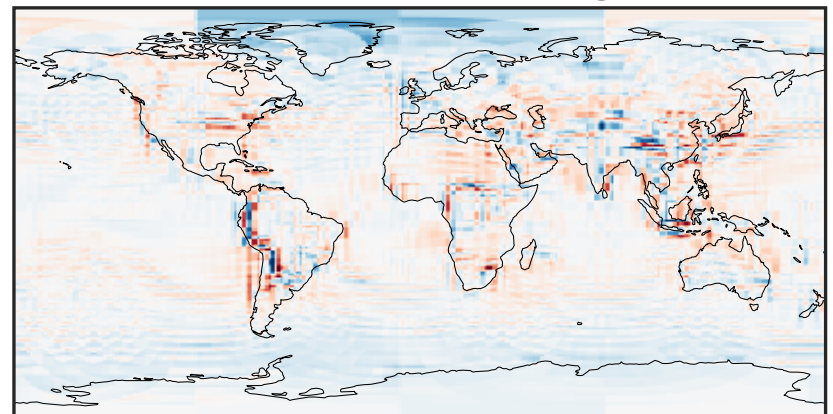
-0.0508 -0.0254 0.0000 0.0254 0.0508
ppb

Ratio (1x1.25)
Dev/Ref, Dynamic Range



0.416 0.708 1.000 1.702 2.404
unitless

Ratio (1x1.25)
Dev/Ref, Fixed Range



0.50 0.75 1.00 1.50 2.00
unitless