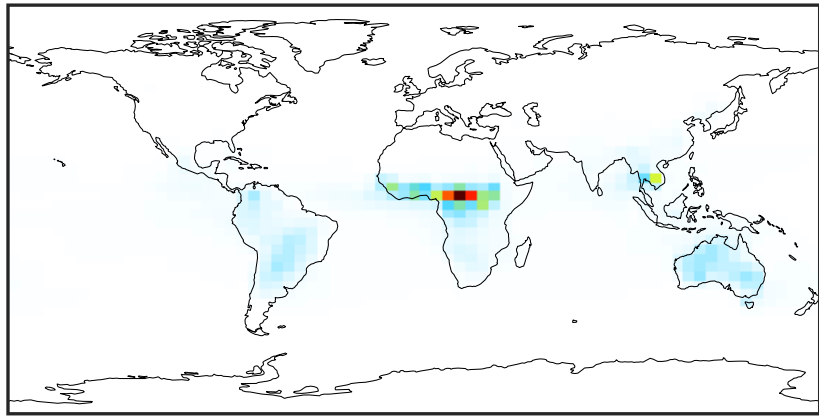


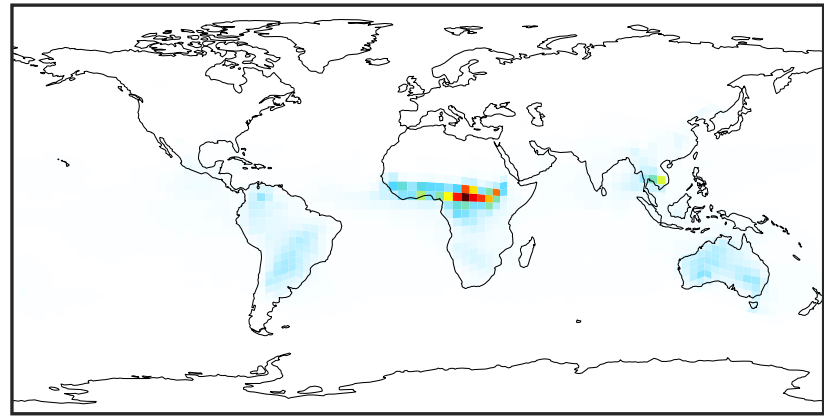
# SpeciesConcVV\_ACTA (Jan2019)

14.3.0-rc.0 (Ref)  
4.0x5.0



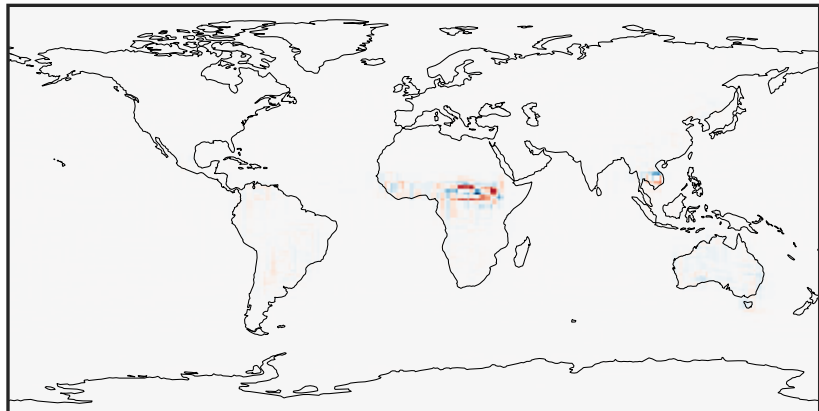
0.003 1.410 2.817 4.224 5.631  
ppb

14.3.0-rc.0 (Dev)  
c24



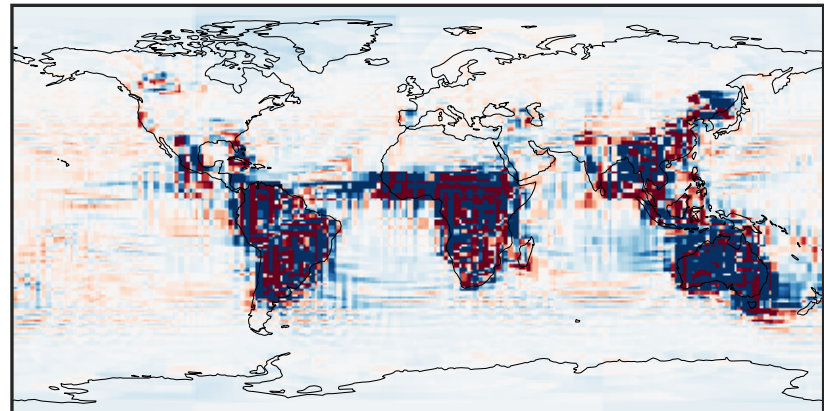
0.003 1.410 2.817 4.224 5.631  
ppb

Difference (1x1.25)  
Dev - Ref, Dynamic Range



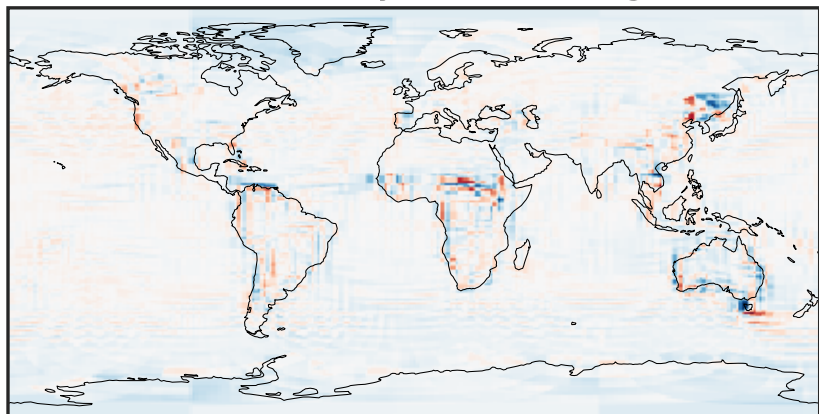
-2.569 -1.284 0.000 1.284 2.569  
ppb

Difference (1x1.25)  
Dev - Ref, Restricted Range [5%,95%]



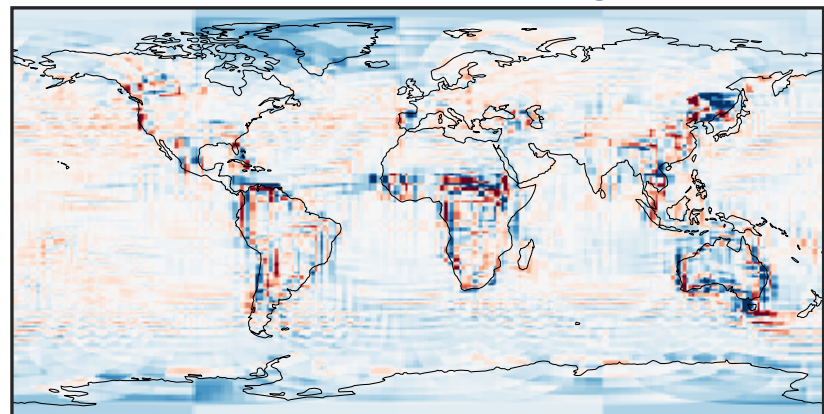
-0.006 0.000 0.006  
ppb

Ratio (1x1.25)  
Dev/Ref, Dynamic Range



0.179 0.590 1.000 3.293 5.586  
unitless

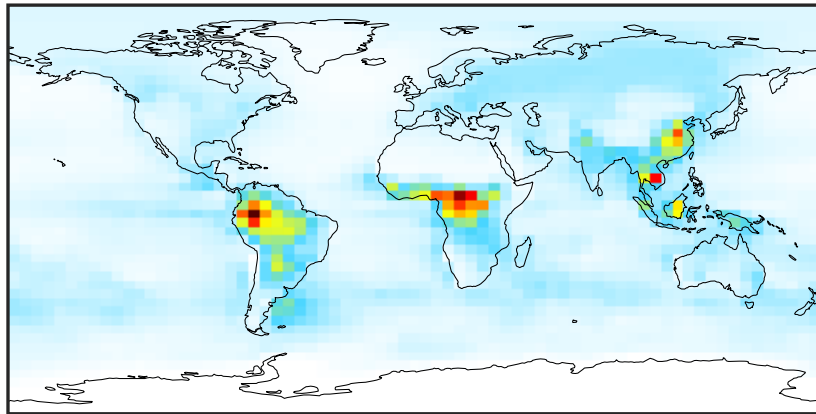
Ratio (1x1.25)  
Dev/Ref, Fixed Range



0.50 0.75 1.00 1.50 2.00  
unitless

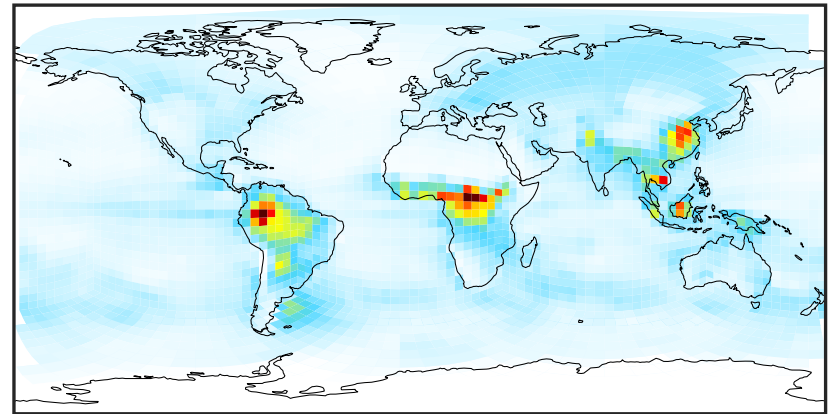
# SpeciesConcVV\_ALD2 (Jan2019)

14.3.0-rc.0 (Ref)  
4.0x5.0



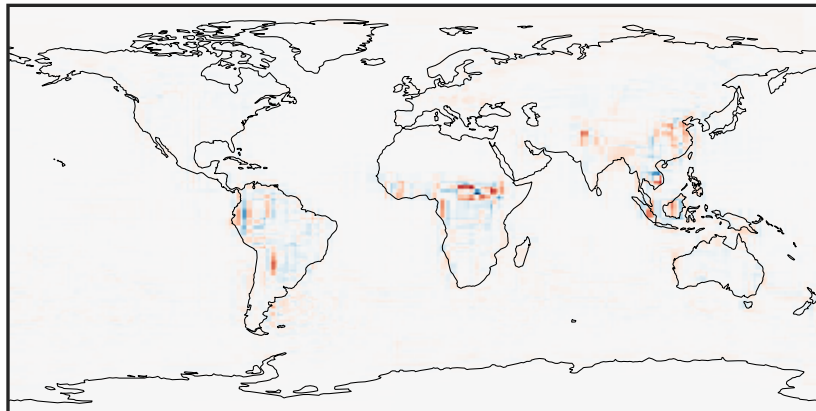
0.000 0.793 1.586 2.379 3.172  
ppb

14.3.0-rc.0 (Dev)  
c24



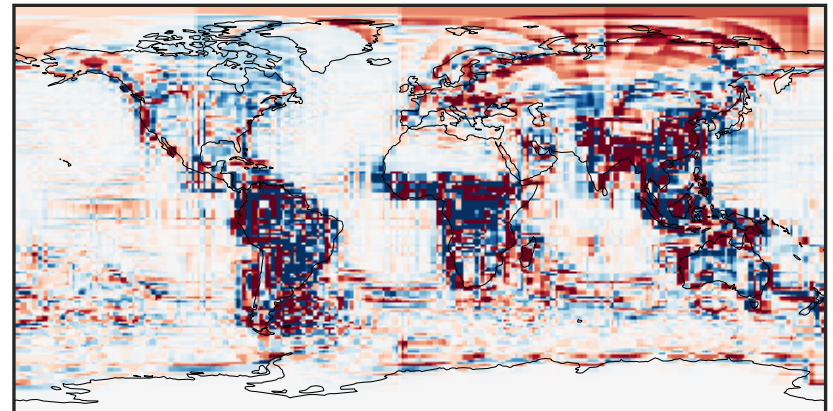
0.000 0.793 1.586 2.379 3.172  
ppb

Difference (1x1.25)  
Dev - Ref, Dynamic Range



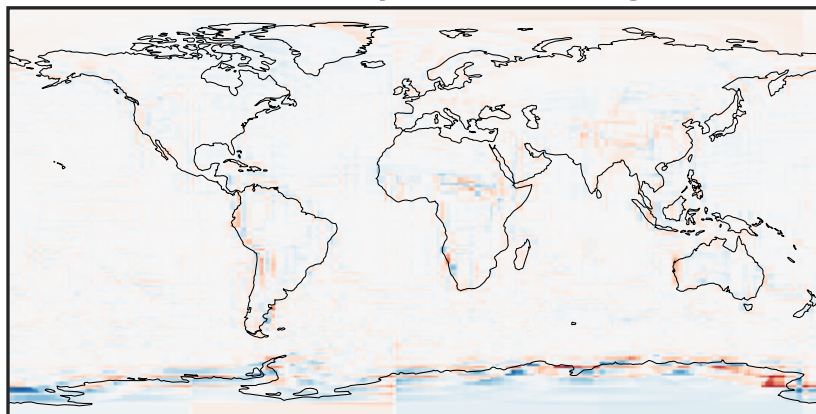
-1.542 -0.771 0.000 0.771 1.542  
ppb

Difference (1x1.25)  
Dev - Ref, Restricted Range [5%,95%]



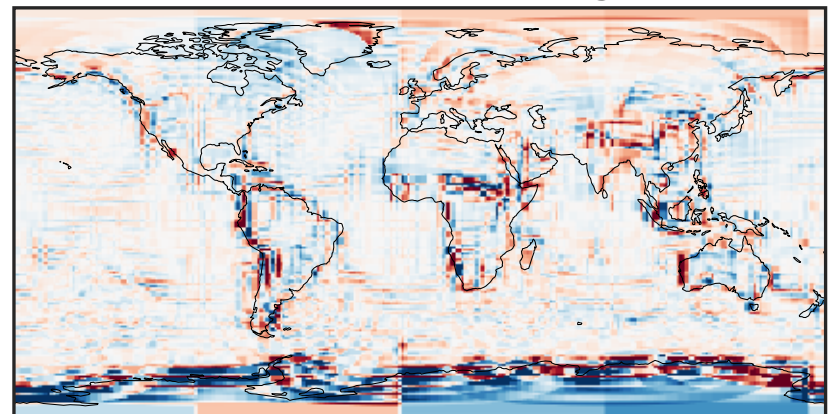
-0.0591 -0.0295 0.0000 0.0295 0.0591  
ppb

Ratio (1x1.25)  
Dev/Ref, Dynamic Range



1e-01 1 10  
unitless

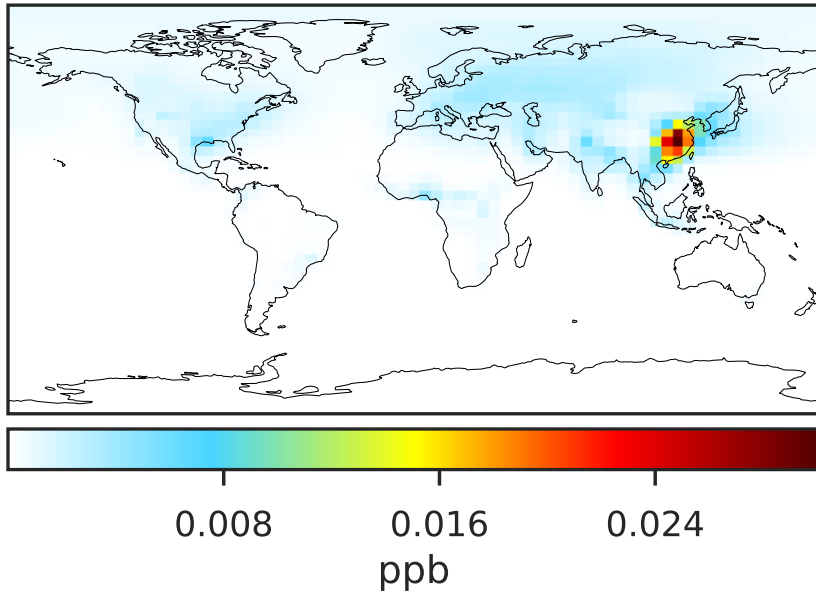
Ratio (1x1.25)  
Dev/Ref, Fixed Range



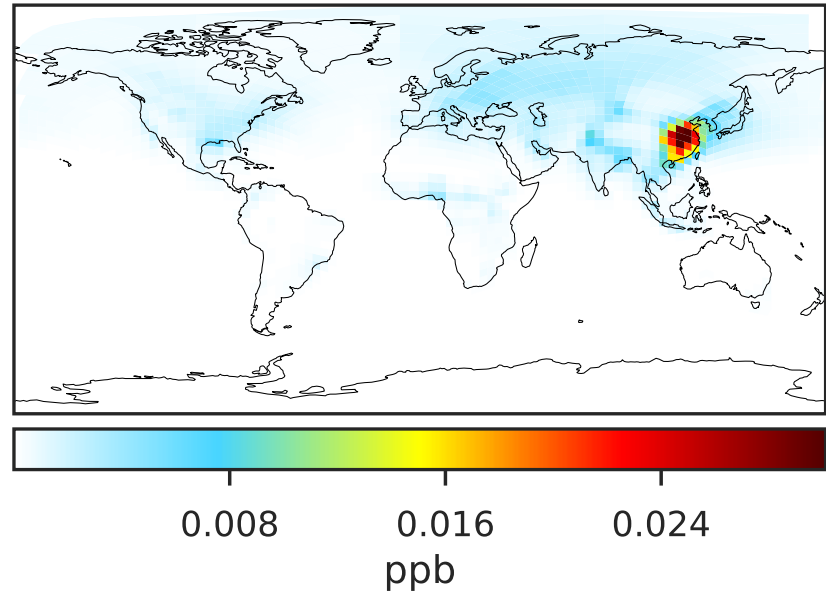
0.50 0.75 1.00 1.50 2.00  
unitless

# SpeciesConcVV\_BALD (Jan2019)

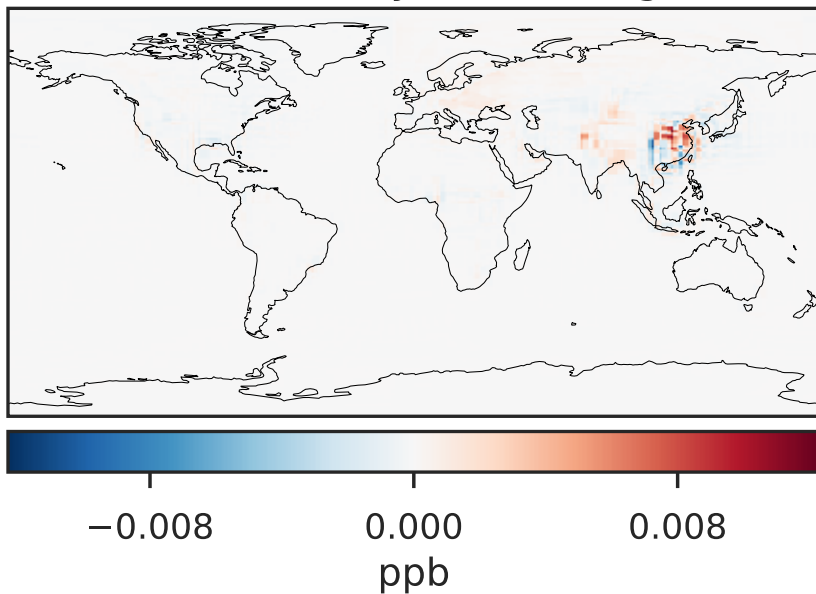
14.3.0-rc.0 (Ref)  
4.0x5.0



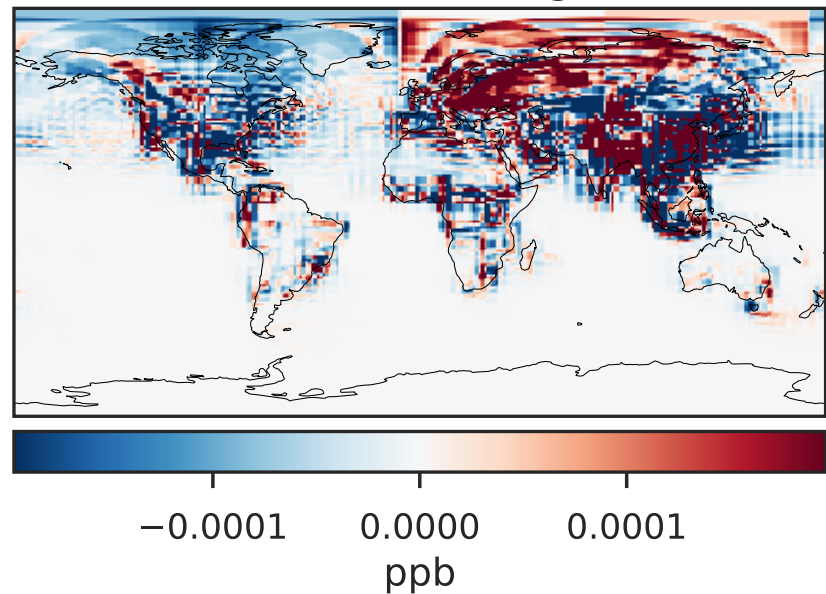
14.3.0-rc.0 (Dev)  
c24



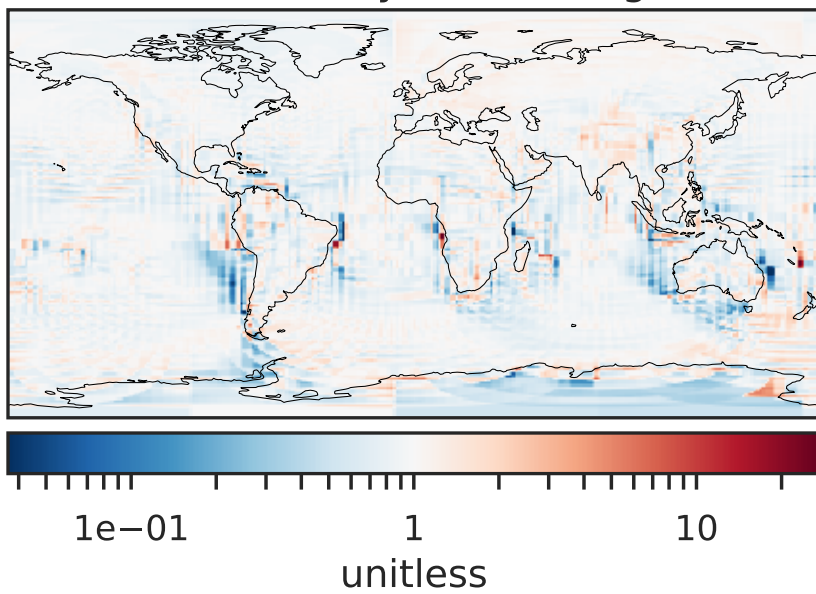
Difference (1x1.25)  
Dev - Ref, Dynamic Range



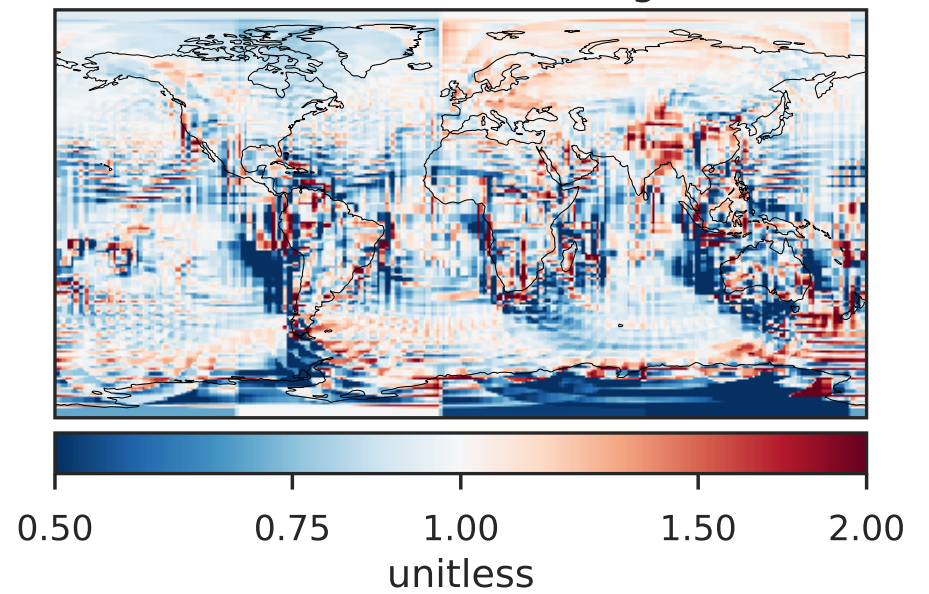
Difference (1x1.25)  
Dev - Ref, Restricted Range [5%,95%]



Ratio (1x1.25)  
Dev/Ref, Dynamic Range

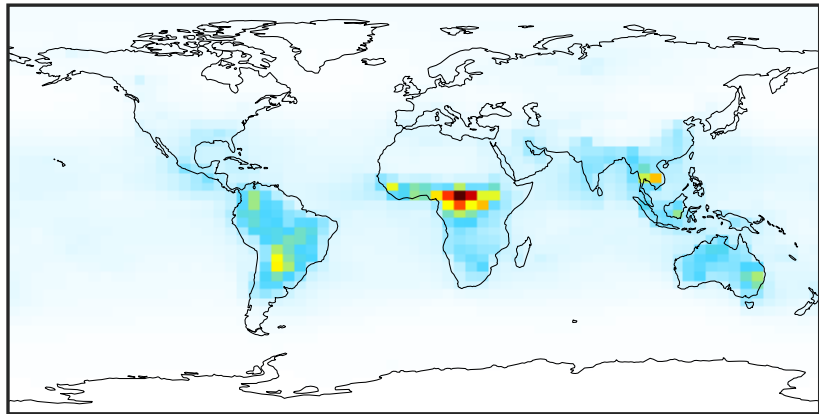


Ratio (1x1.25)  
Dev/Ref, Fixed Range



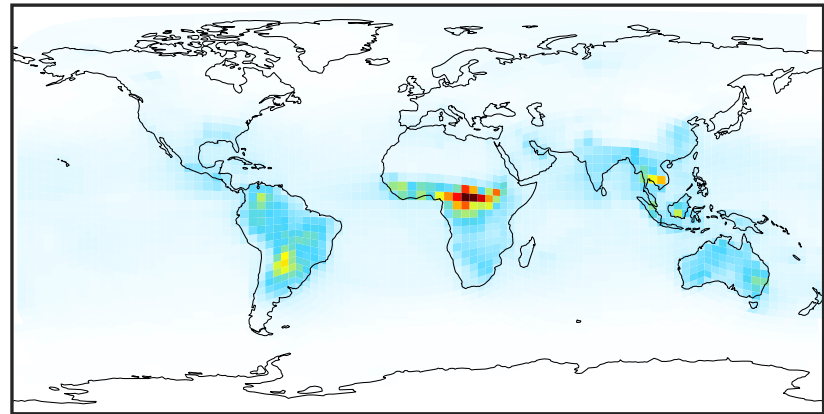
# SpeciesConcVV\_CH20 (Jan2019)

14.3.0-rc.0 (Ref)  
4.0x5.0



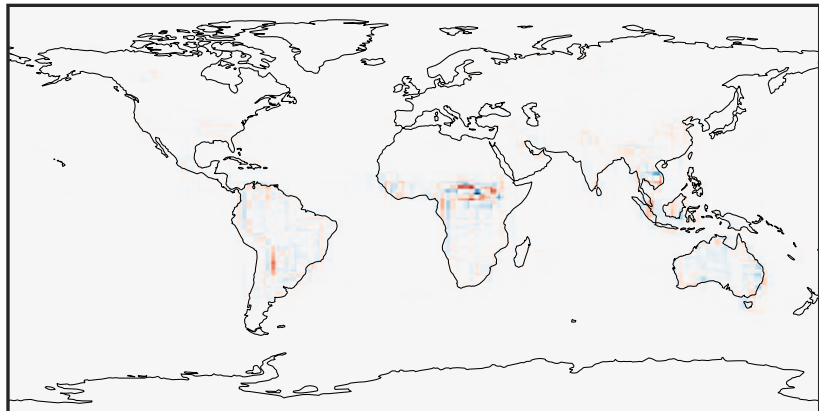
0.014 2.350 4.686 7.022 9.358  
ppb

14.3.0-rc.0 (Dev)  
c24



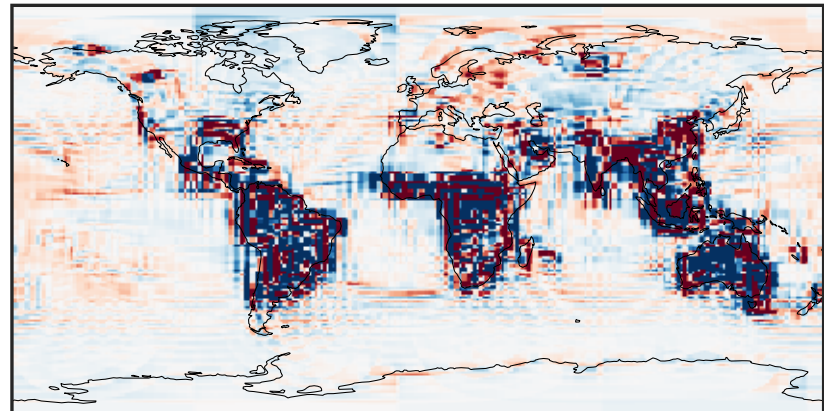
0.014 2.350 4.686 7.022 9.358  
ppb

Difference (1x1.25)  
Dev - Ref, Dynamic Range



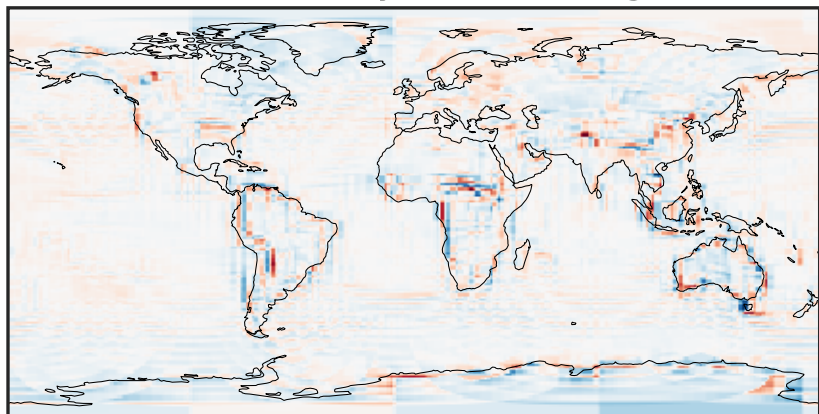
-4.456 -2.228 0.000 2.228 4.456  
ppb

Difference (1x1.25)  
Dev - Ref, Restricted Range [5%,95%]



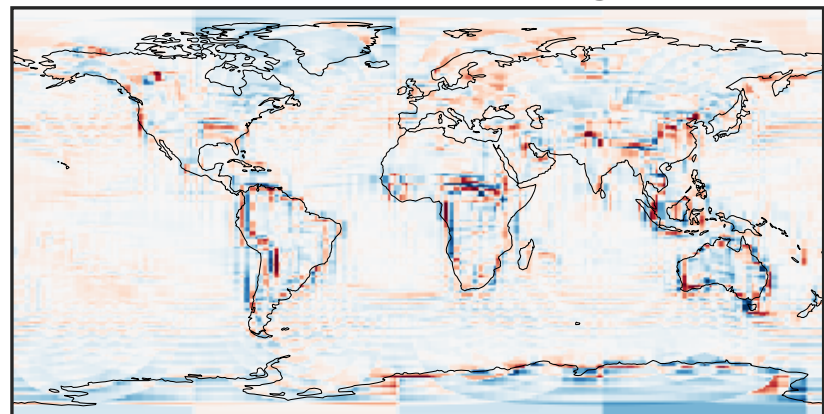
-0.0856 -0.0428 0.0000 0.0428 0.0856  
ppb

Ratio (1x1.25)  
Dev/Ref, Dynamic Range



0.353 0.676 1.000 1.918 2.835  
unitless

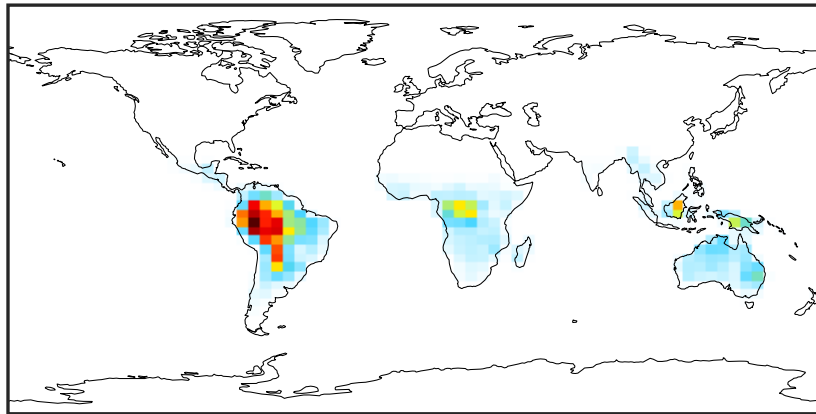
Ratio (1x1.25)  
Dev/Ref, Fixed Range



0.50 0.75 1.00 1.50 2.00  
unitless

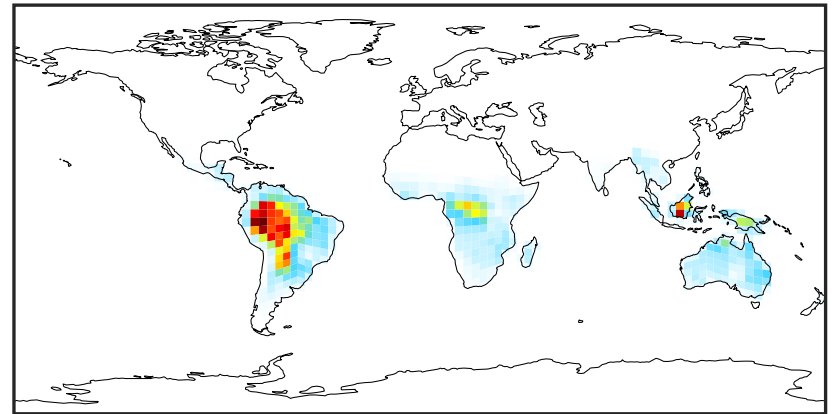
# SpeciesConcVW\_HPALDs (Jan2019)

14.3.0-rc.0 (Ref)  
4.0x5.0



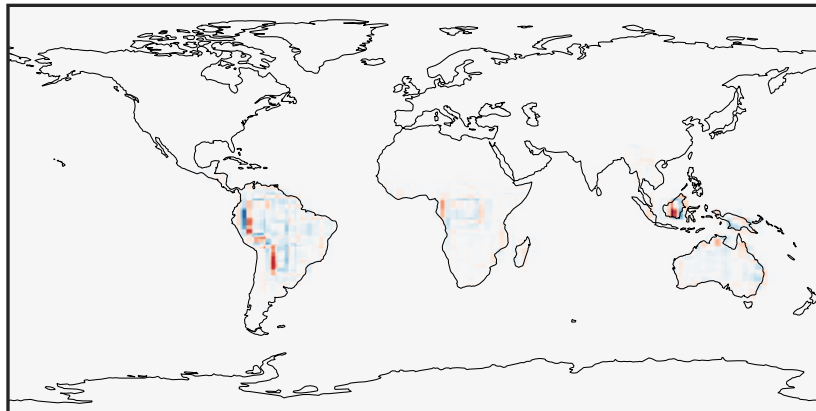
0.0000 0.0737 0.1474 0.2211 0.2949  
ppb

14.3.0-rc.0 (Dev)  
c24



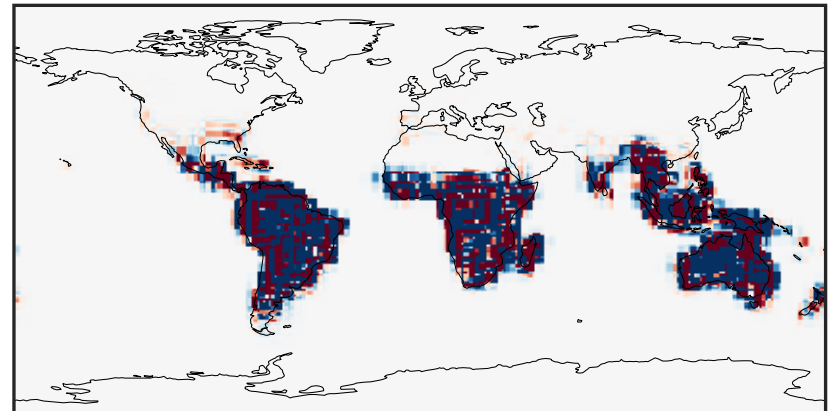
0.0000 0.0737 0.1474 0.2211 0.2949  
ppb

Difference (1x1.25)  
Dev - Ref, Dynamic Range



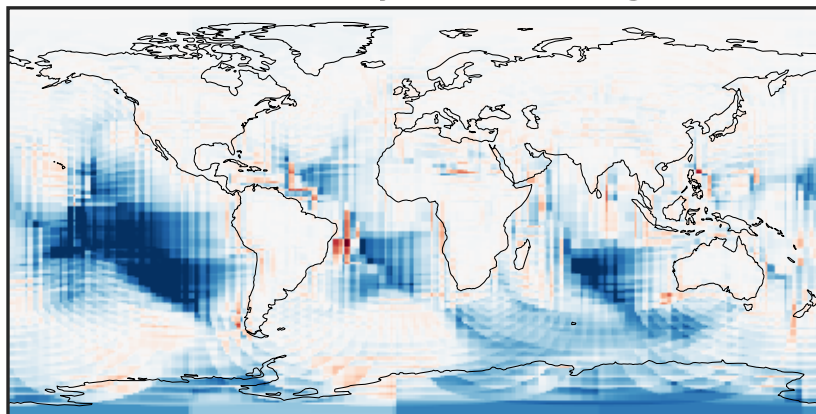
-0.1668 -0.0834 0.0000 0.0834 0.1668  
ppb

Difference (1x1.25)  
Dev - Ref, Restricted Range [5%,95%]



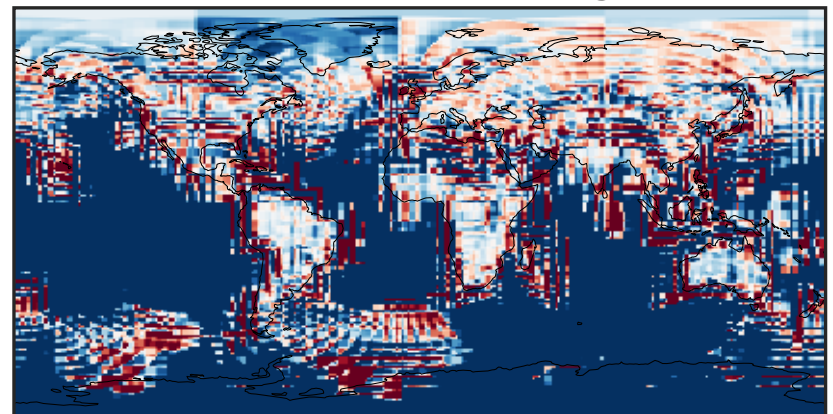
-0.0004 0.0000 0.0004  
ppb

Ratio (1x1.25)  
Dev/Ref, Dynamic Range



unitless

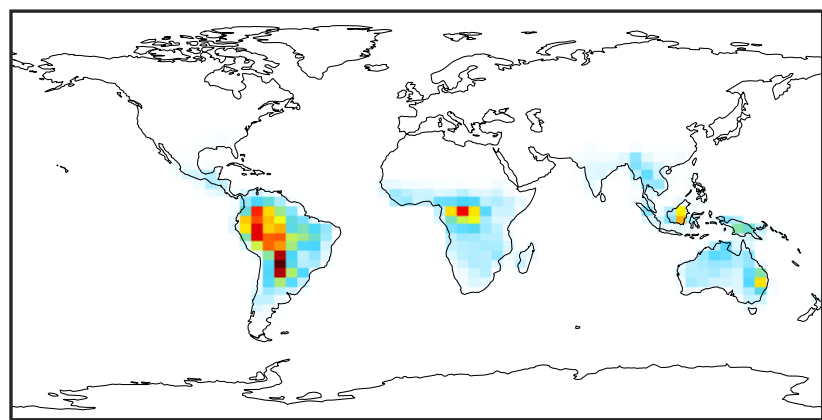
Ratio (1x1.25)  
Dev/Ref, Fixed Range



0.50 0.75 1.00 1.50 2.00  
unitless

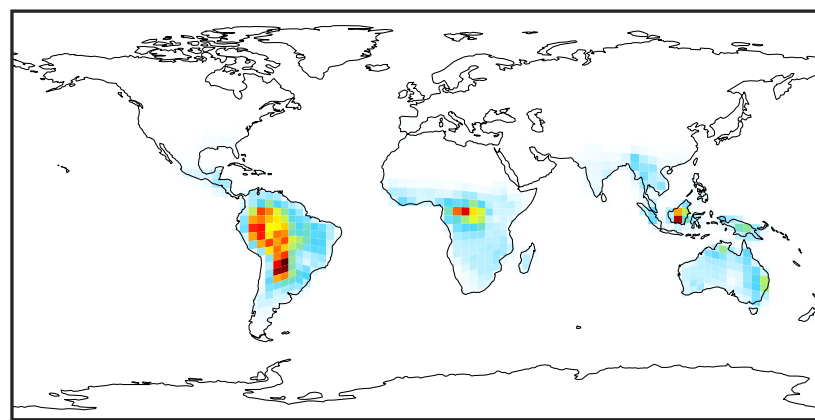
# SpeciesConcVV\_MACR (Jan2019)

14.3.0-rc.0 (Ref)  
4.0x5.0



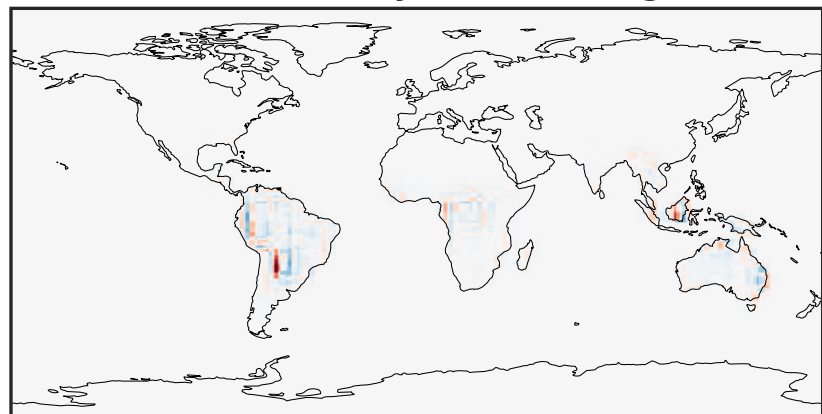
0.000 0.283 0.566 0.849 1.132  
ppb

14.3.0-rc.0 (Dev)  
c24



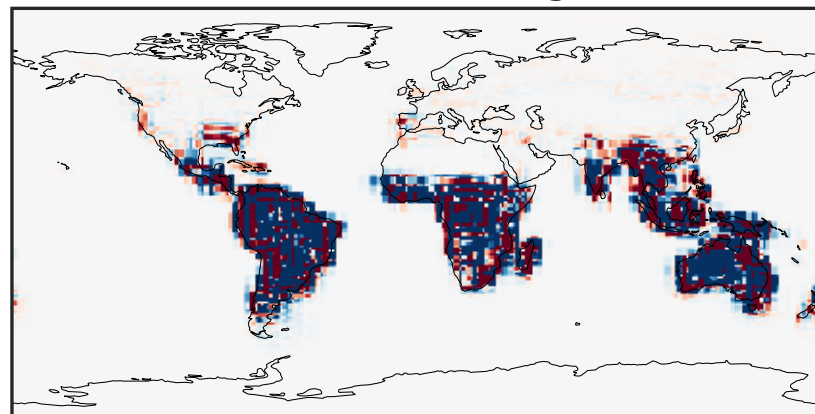
0.000 0.283 0.566 0.849 1.132  
ppb

Difference (1x1.25)  
Dev - Ref, Dynamic Range



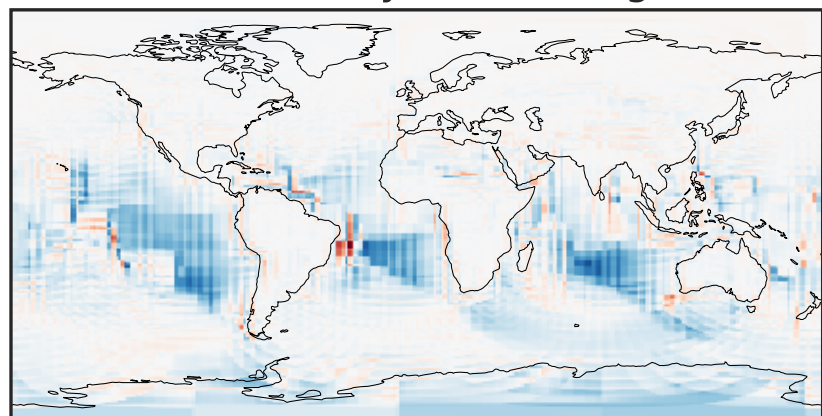
-0.730 -0.365 0.000 0.365 0.730  
ppb

Difference (1x1.25)  
Dev - Ref, Restricted Range [5%,95%]



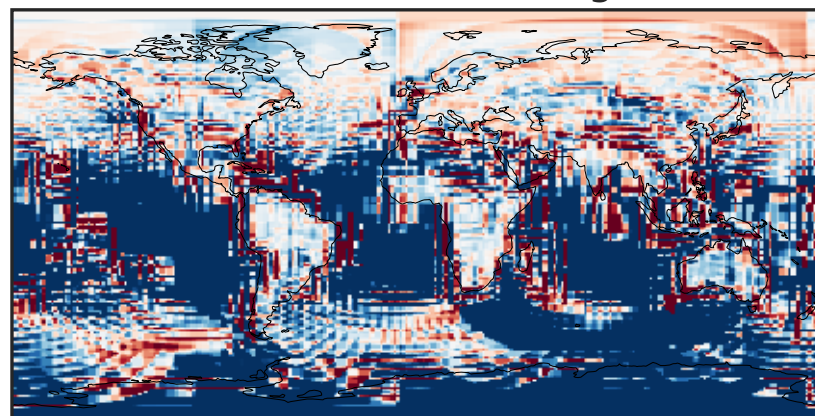
-0.004 0.000 0.004  
ppb

Ratio (1x1.25)  
Dev/Ref, Dynamic Range



unitless

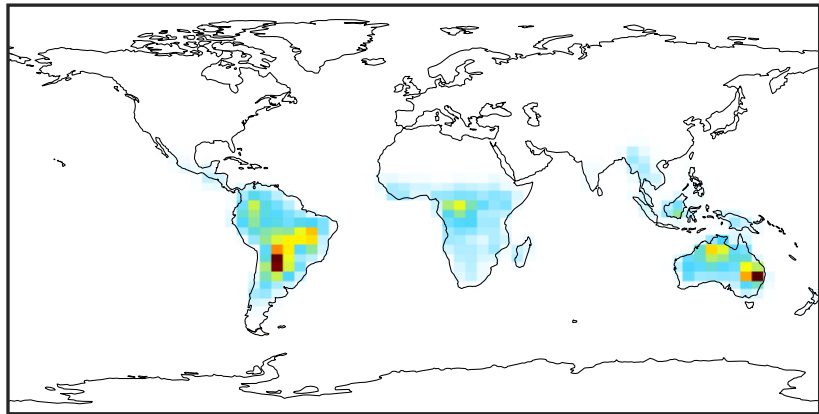
Ratio (1x1.25)  
Dev/Ref, Fixed Range



0.50 0.75 1.00 1.50 2.00  
unitless

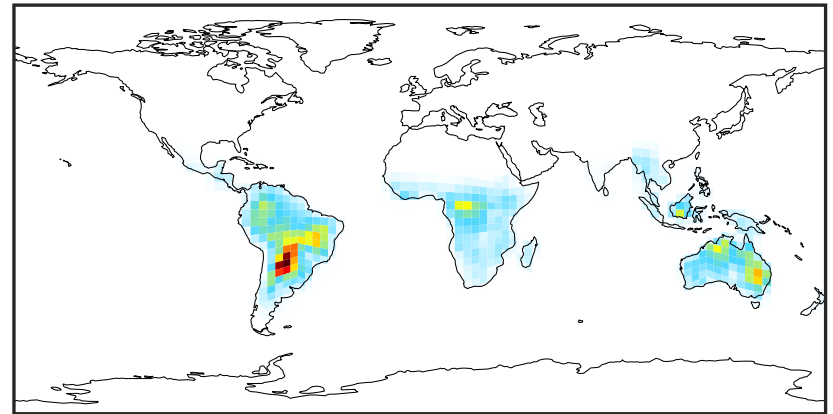
# SpeciesConcVV\_IEPOX (Jan2019)

14.3.0-rc.0 (Ref)  
4.0x5.0



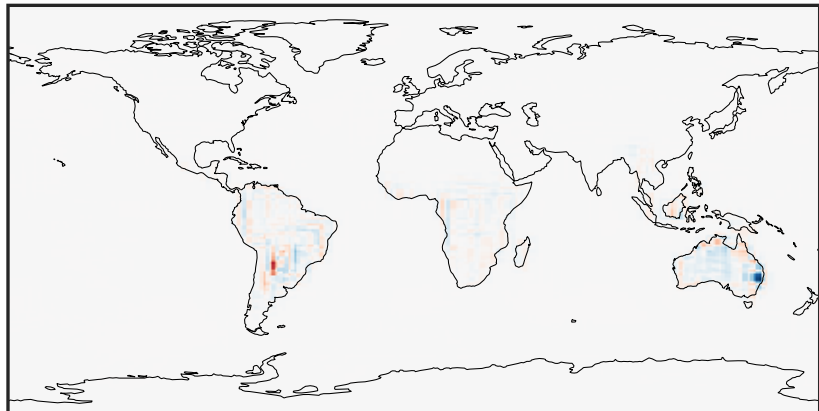
0.000 0.338 0.677 1.015 1.353  
ppb

14.3.0-rc.0 (Dev)  
c24



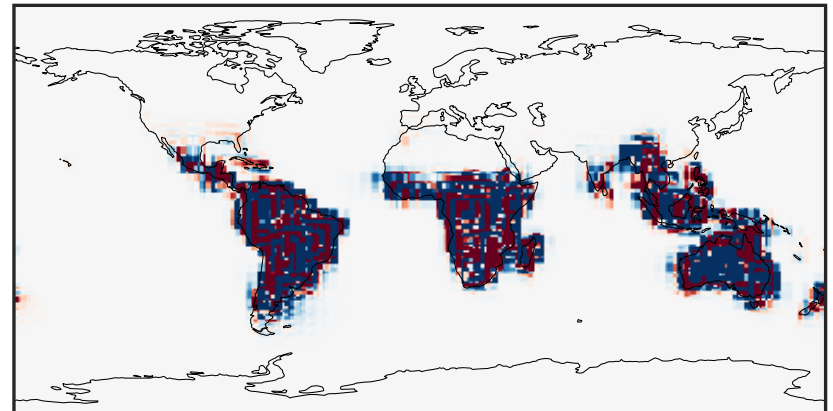
0.000 0.338 0.677 1.015 1.353  
ppb

Difference (1x1.25)  
Dev - Ref, Dynamic Range



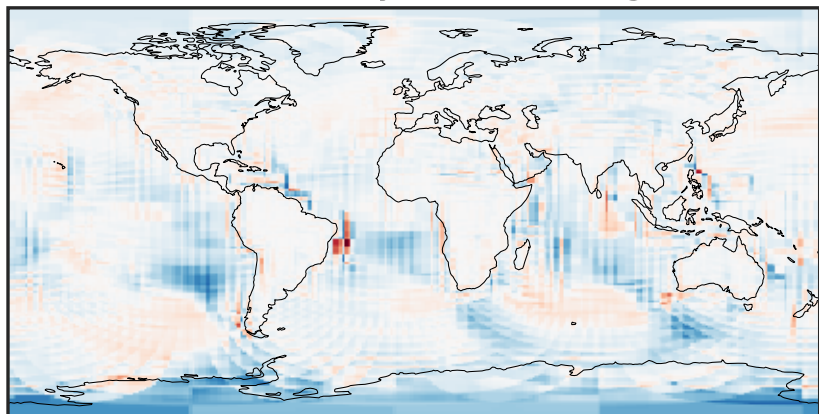
-0.956 -0.478 0.000 0.478 0.956  
ppb

Difference (1x1.25)  
Dev - Ref, Restricted Range [5%,95%]



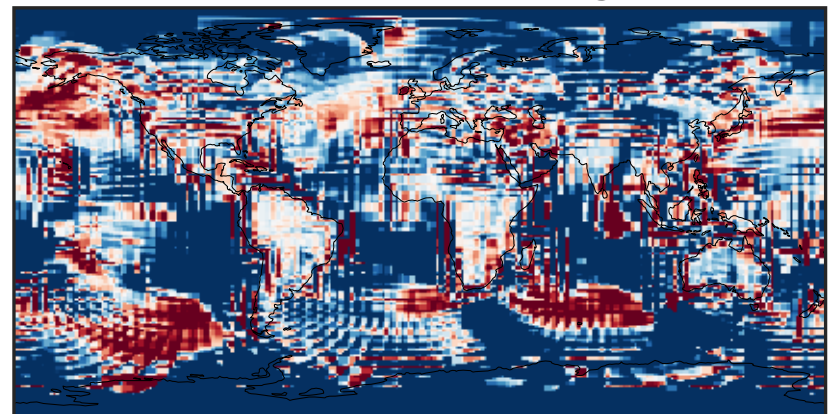
-0.004 0.000 0.004  
ppb

Ratio (1x1.25)  
Dev/Ref, Dynamic Range



unitless

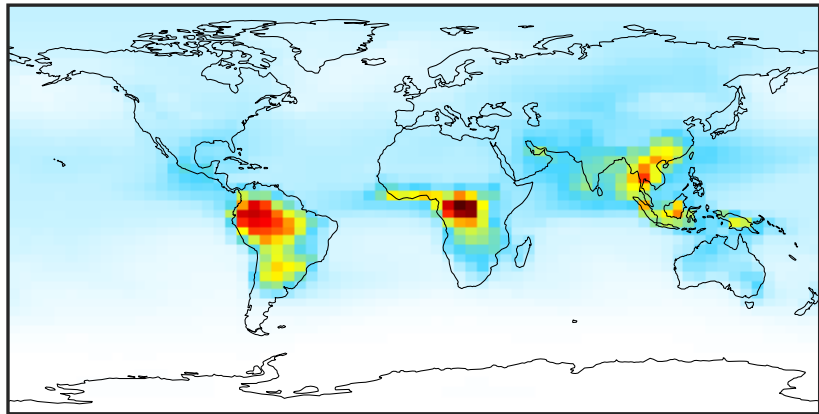
Ratio (1x1.25)  
Dev/Ref, Fixed Range



0.50 0.75 1.00 1.50 2.00  
unitless

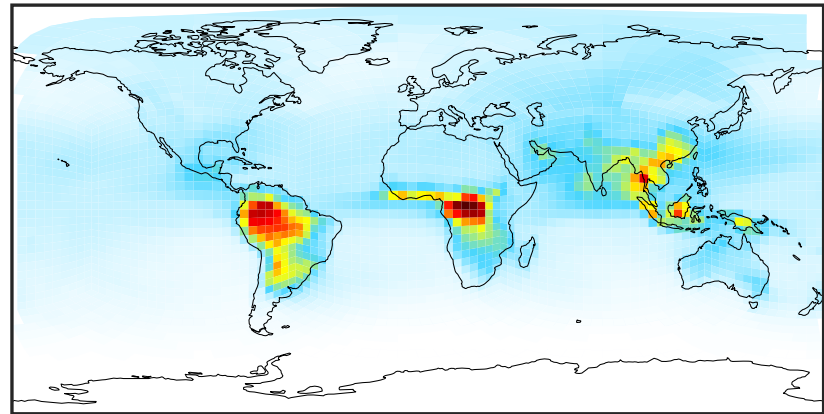
# SpeciesConcVV\_ACET (Jan2019)

14.3.0-rc.0 (Ref)  
4.0x5.0



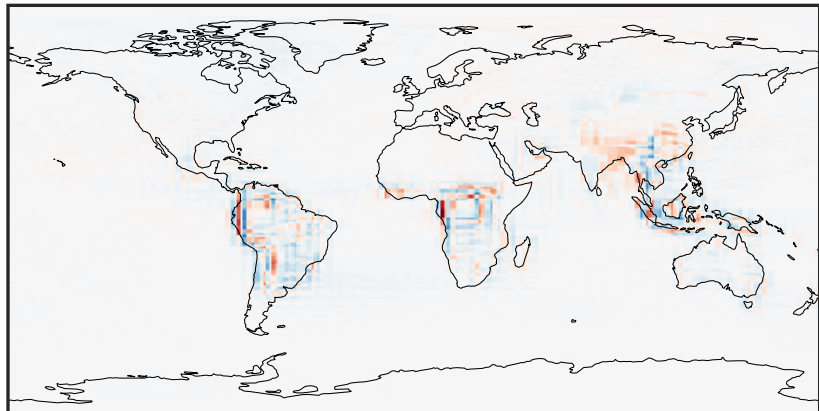
0.098 1.589 3.079 4.569 6.060  
ppb

14.3.0-rc.0 (Dev)  
c24



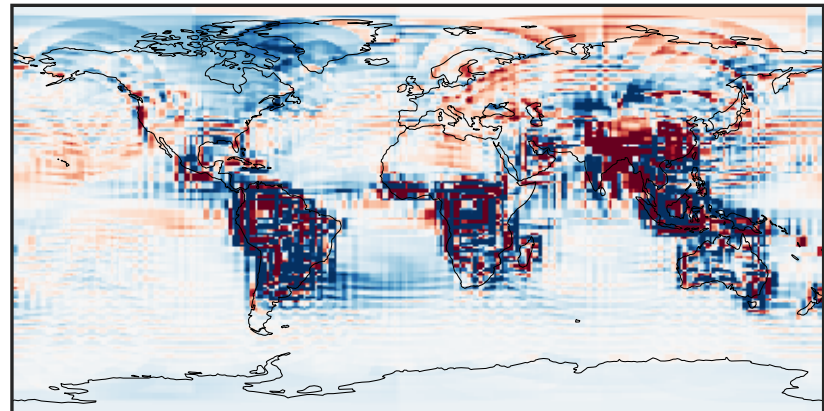
0.098 1.589 3.079 4.569 6.060  
ppb

Difference (1x1.25)  
Dev - Ref, Dynamic Range



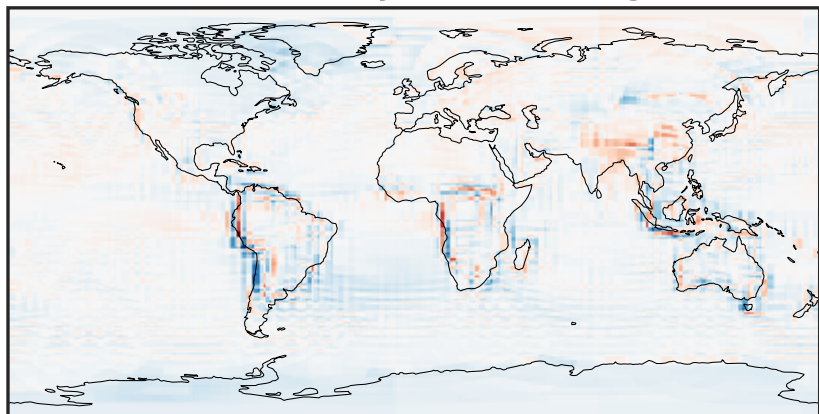
-1.811 -0.906 0.000 0.906 1.811  
ppb

Difference (1x1.25)  
Dev - Ref, Restricted Range [5%,95%]



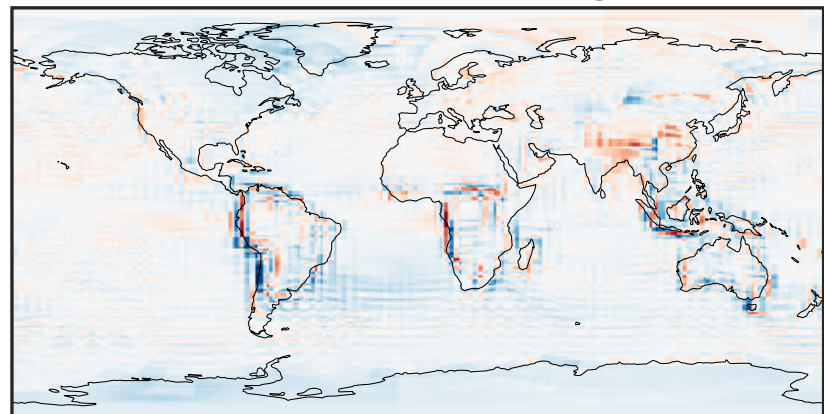
-0.1045 -0.0522 0.0000 0.0522 0.1045  
ppb

Ratio (1x1.25)  
Dev/Ref, Dynamic Range



0.407 0.704 1.000 1.728 2.457  
unitless

Ratio (1x1.25)  
Dev/Ref, Fixed Range

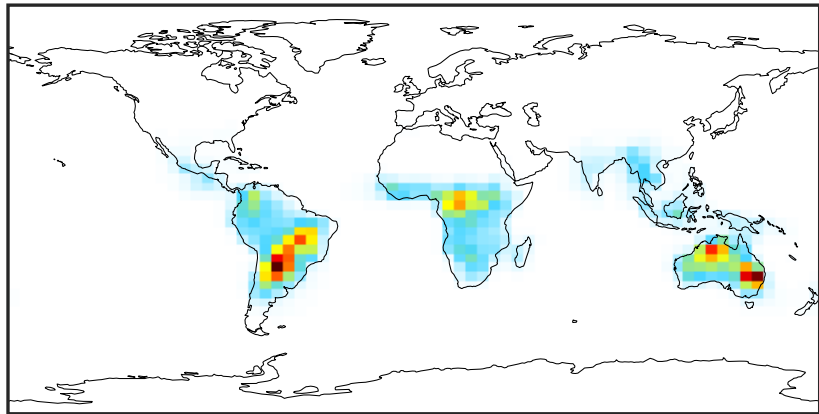


0.50 0.75 1.00 1.50 2.00  
unitless



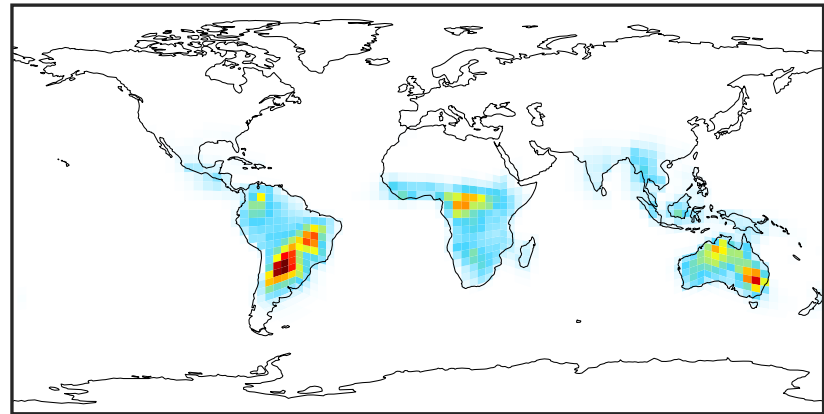
# SpeciesConcVV\_HAC (Jan2019)

14.3.0-rc.0 (Ref)  
4.0x5.0



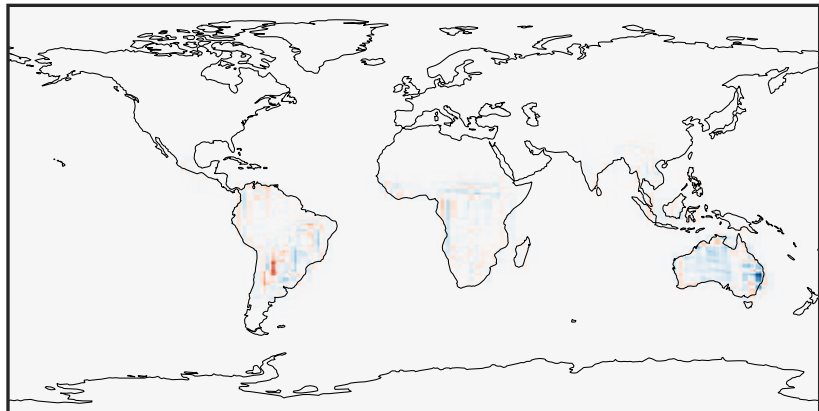
0.000 0.256 0.512 0.768 1.024  
ppb

14.3.0-rc.0 (Dev)  
c24



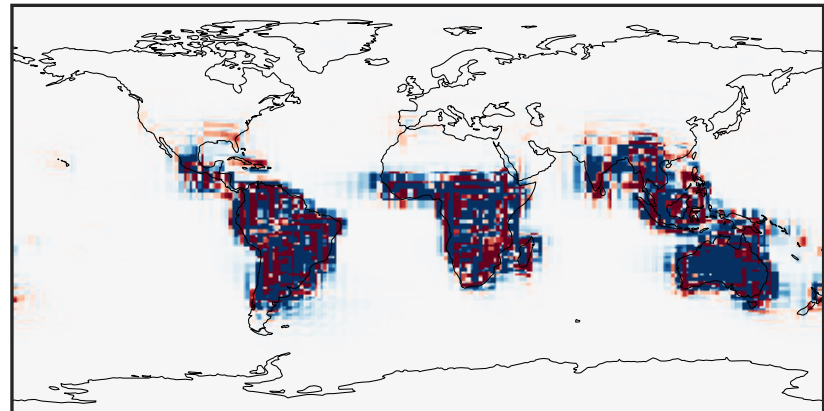
0.000 0.256 0.512 0.768 1.024  
ppb

Difference (1x1.25)  
Dev - Ref, Dynamic Range



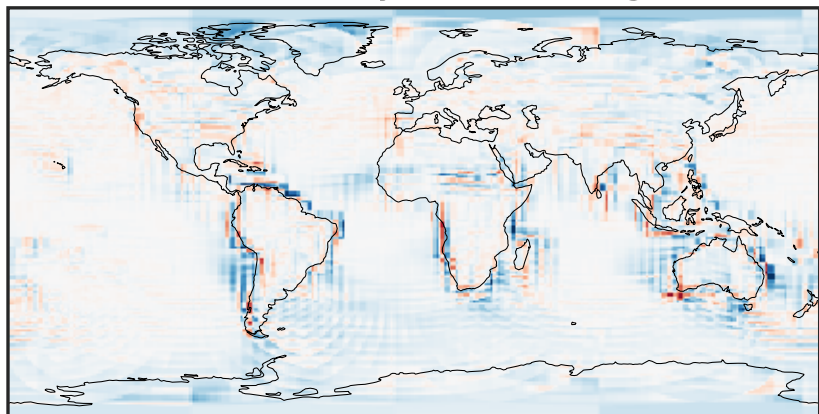
-0.691 -0.345 0.000 0.345 0.691  
ppb

Difference (1x1.25)  
Dev - Ref, Restricted Range [5%,95%]



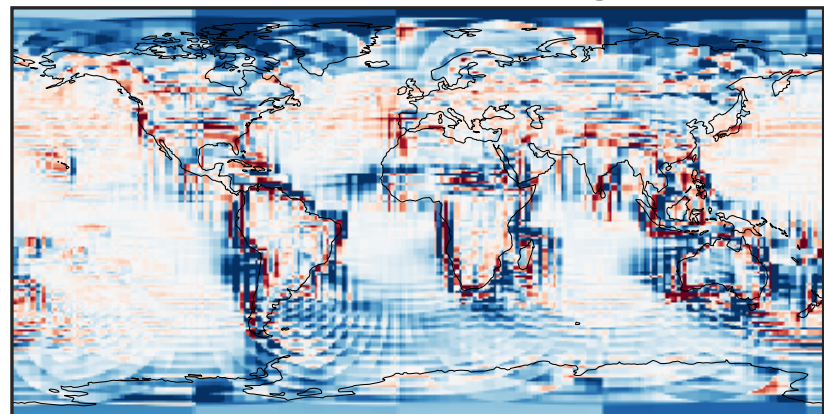
-0.005 0.000 0.005  
ppb

Ratio (1x1.25)  
Dev/Ref, Dynamic Range



1e-01 1 10  
unitless

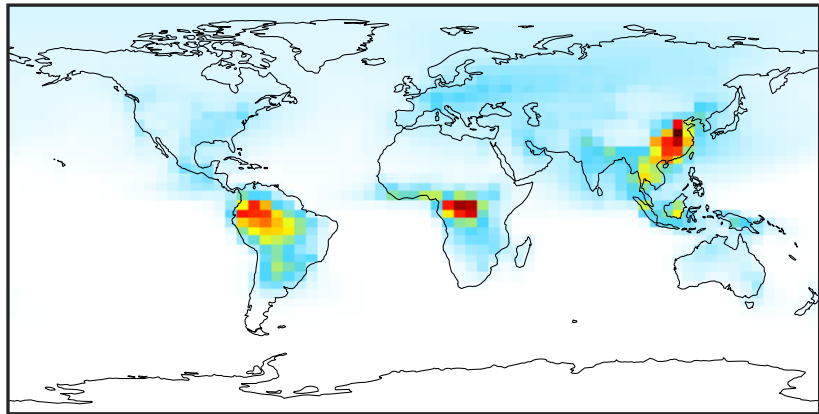
Ratio (1x1.25)  
Dev/Ref, Fixed Range



0.50 0.75 1.00 1.50 2.00  
unitless

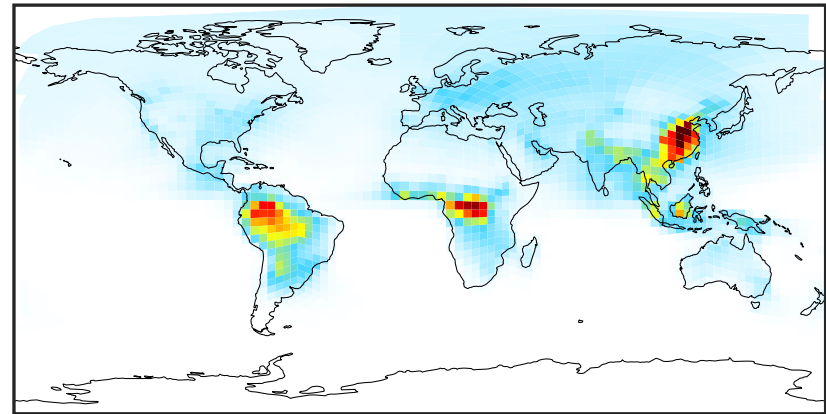
# SpeciesConcVV\_MEK (Jan2019)

14.3.0-rc.0 (Ref)  
4.0x5.0



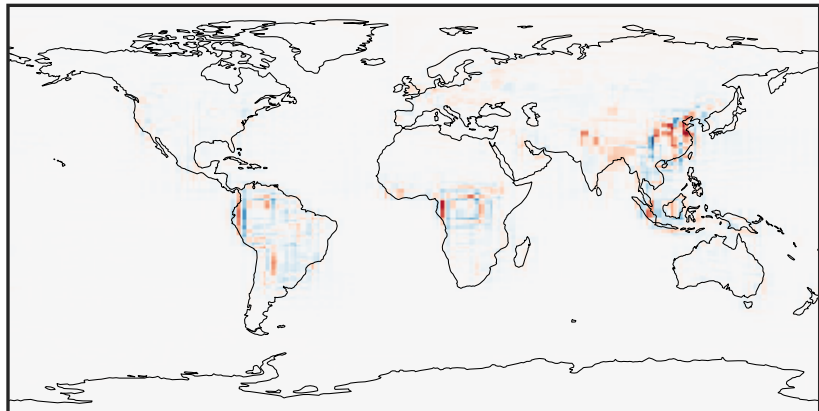
0.000 0.509 1.018 1.527 2.036  
ppb

14.3.0-rc.0 (Dev)  
c24



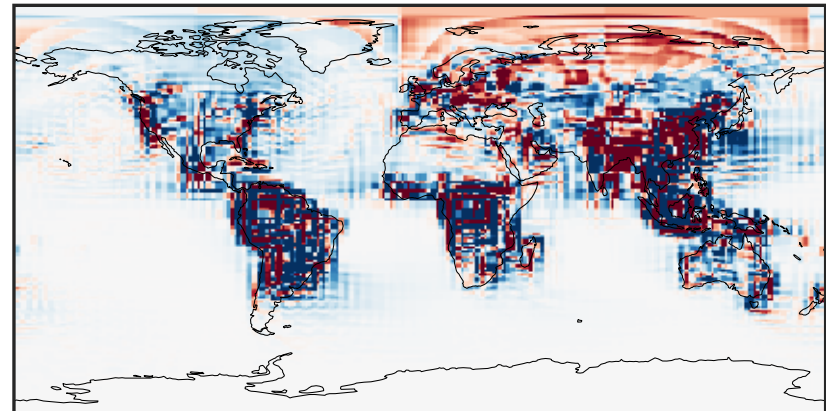
0.000 0.509 1.018 1.527 2.036  
ppb

Difference (1x1.25)  
Dev - Ref, Dynamic Range



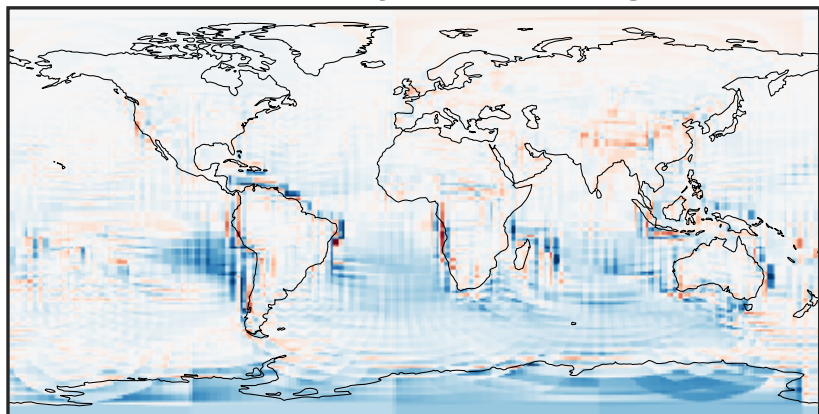
-0.826 -0.413 0.000 0.413 0.826  
ppb

Difference (1x1.25)  
Dev - Ref, Restricted Range [5%,95%]



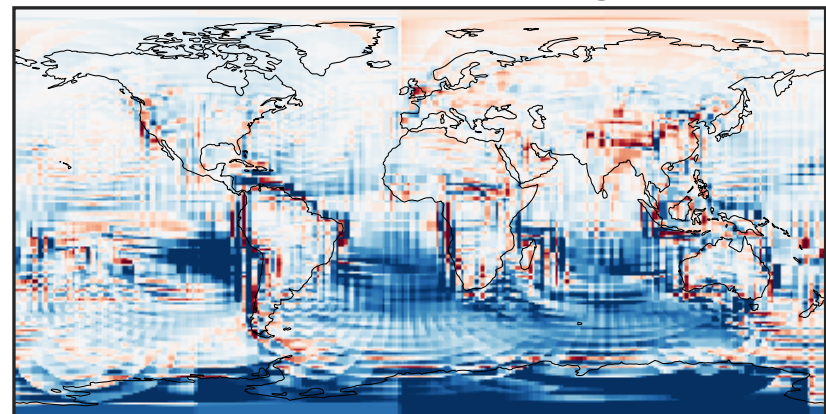
-0.02 0.00 0.02  
ppb

Ratio (1x1.25)  
Dev/Ref, Dynamic Range



0.145 0.572 1.000 3.956 6.911  
unitless

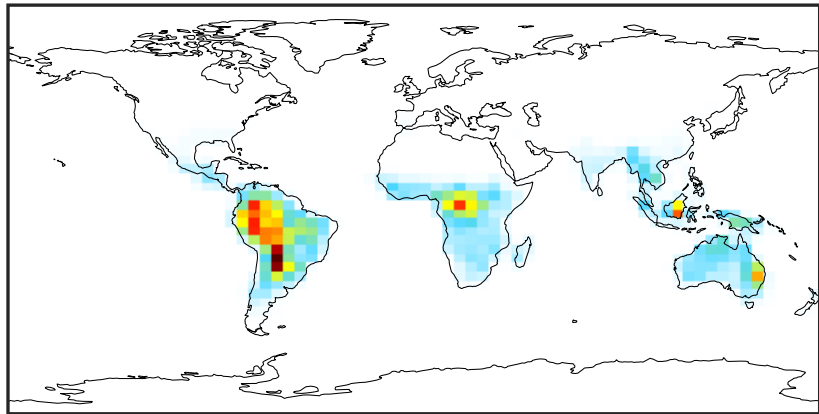
Ratio (1x1.25)  
Dev/Ref, Fixed Range



0.50 0.75 1.00 1.50 2.00  
unitless

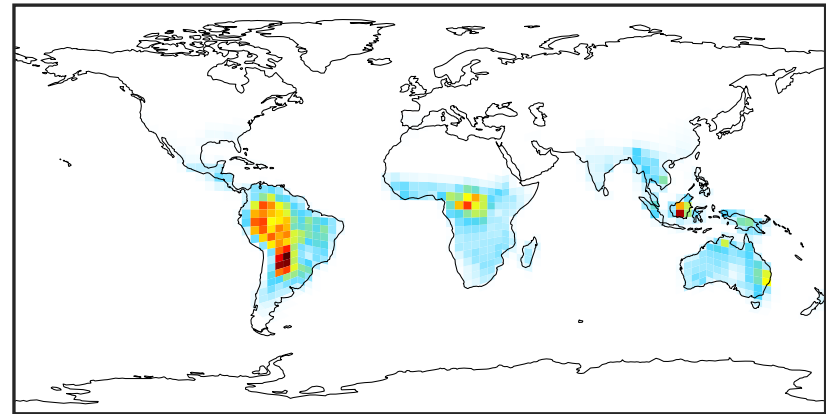
# SpeciesConcVV\_MVK (Jan2019)

14.3.0-rc.0 (Ref)  
4.0x5.0



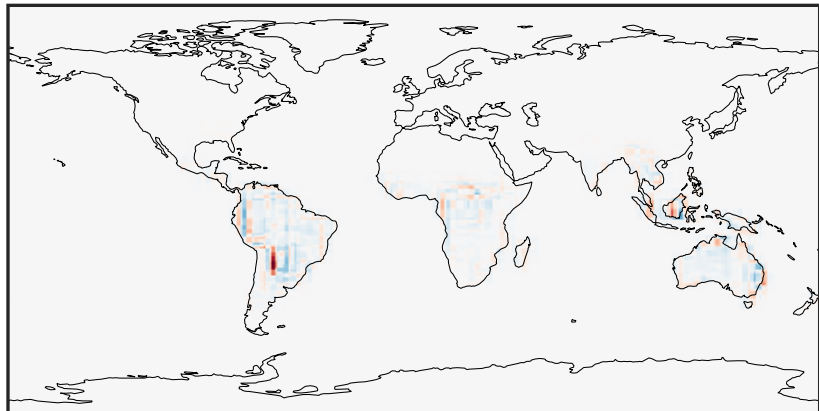
0.000 0.471 0.942 1.413 1.884  
ppb

14.3.0-rc.0 (Dev)  
c24



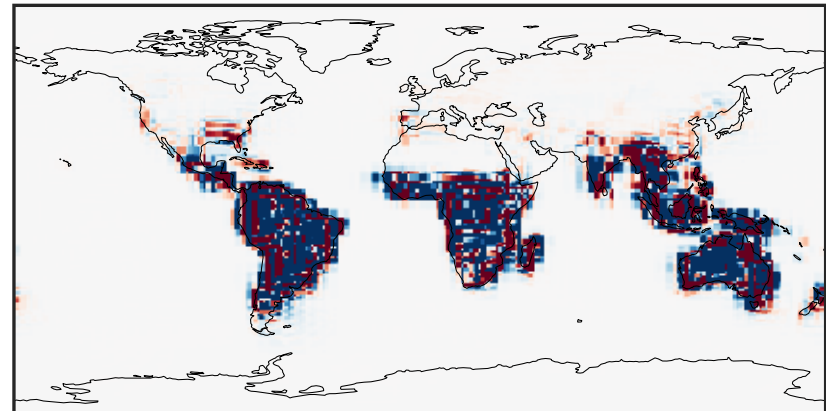
0.000 0.471 0.942 1.413 1.884  
ppb

Difference (1x1.25)  
Dev - Ref, Dynamic Range



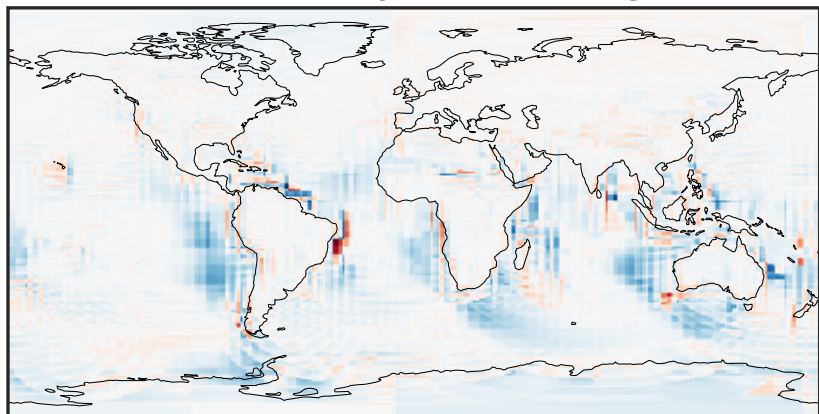
-1.179 -0.589 0.000 0.589 1.179  
ppb

Difference (1x1.25)  
Dev - Ref, Restricted Range [5%,95%]



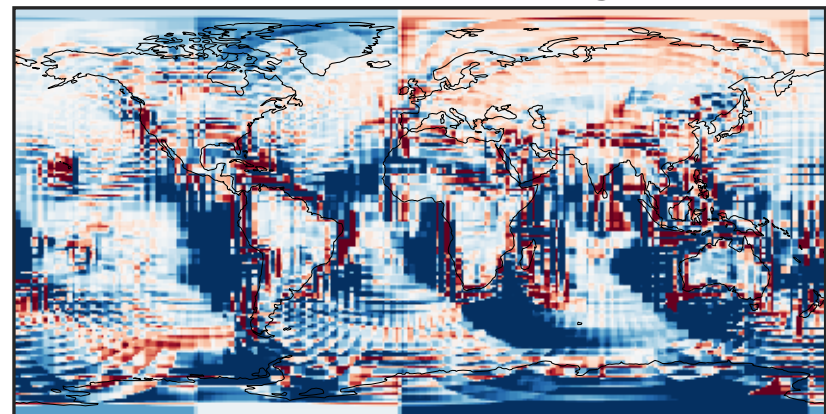
-0.01 0.00 0.01  
ppb

Ratio (1x1.25)  
Dev/Ref, Dynamic Range



1e-03 1e-02 1e-01 1 10 100 1000  
unitless

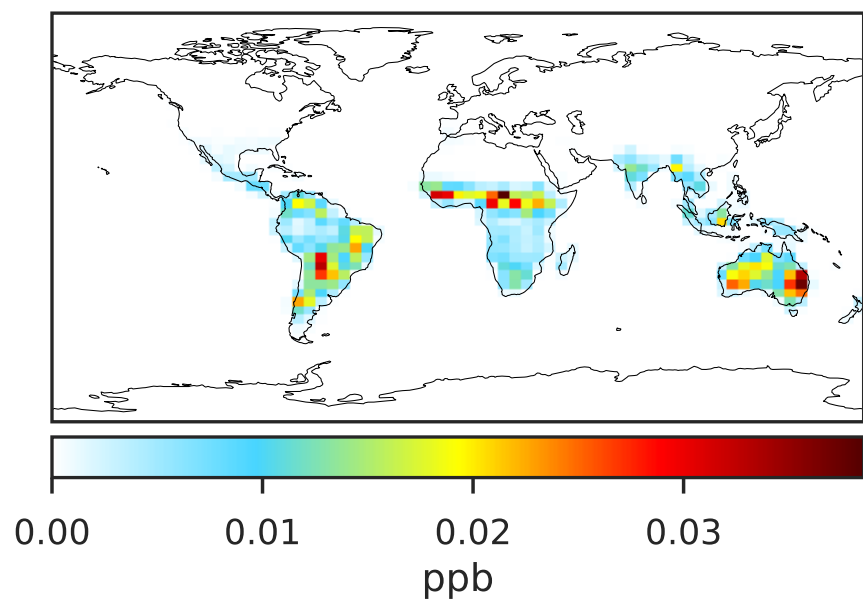
Ratio (1x1.25)  
Dev/Ref, Fixed Range



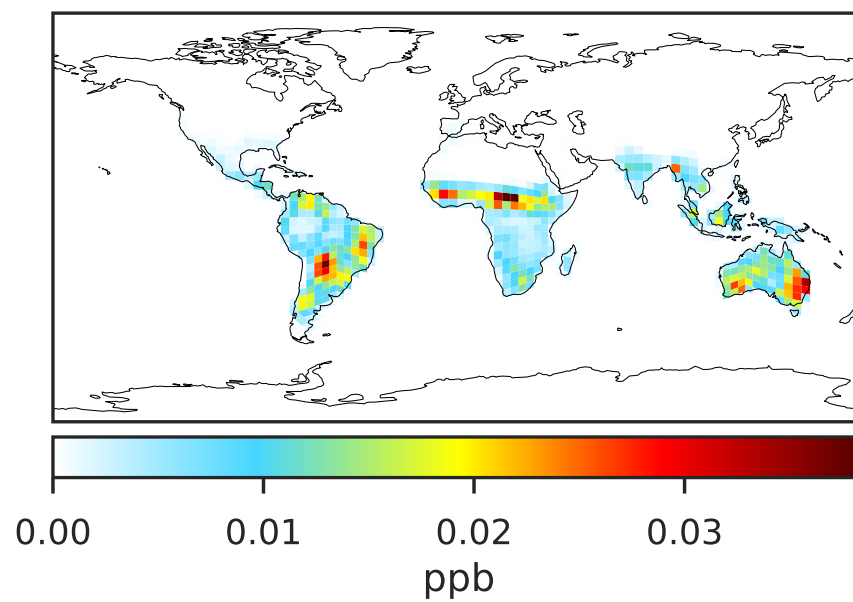
0.50 0.75 1.00 1.50 2.00  
unitless

# SpeciesConcVV\_ISOPN (Jan2019)

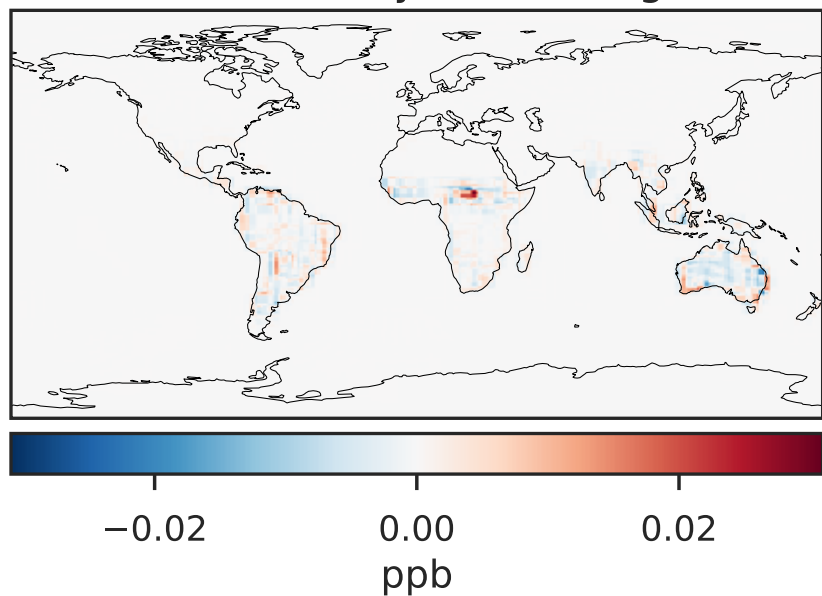
14.3.0-rc.0 (Ref)  
4.0x5.0



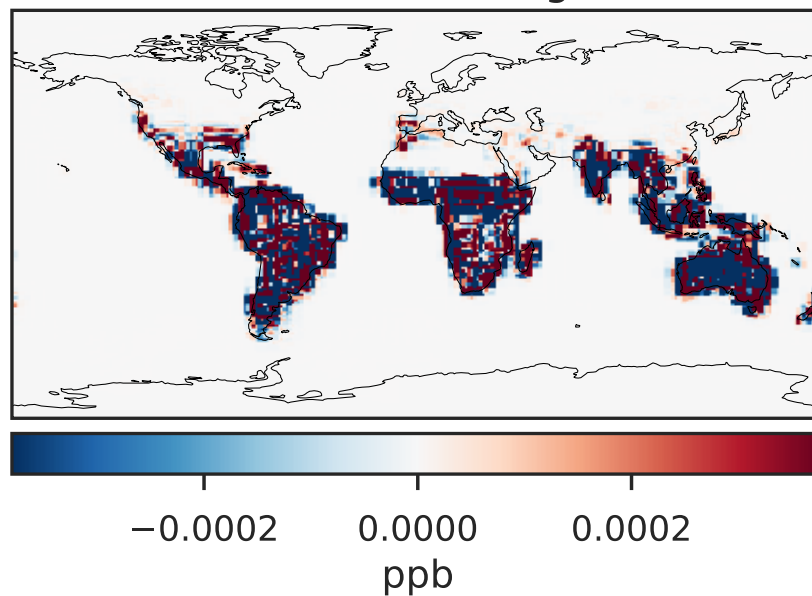
14.3.0-rc.0 (Dev)  
c24



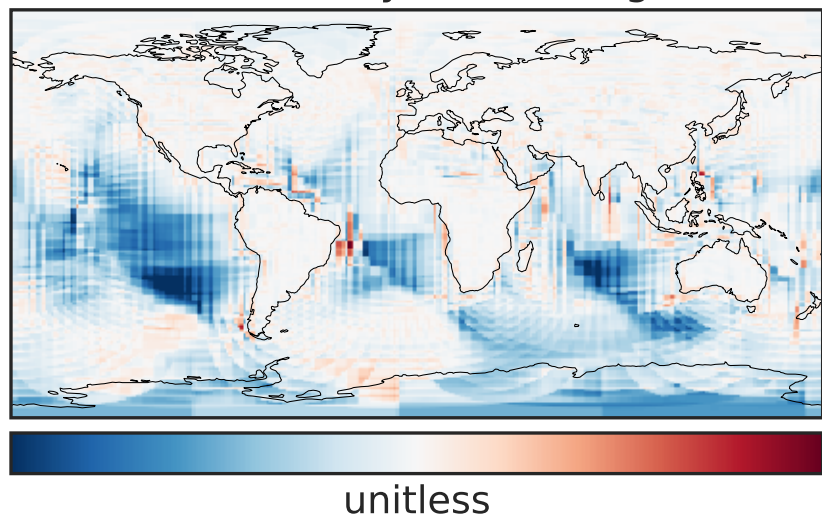
Difference (1x1.25)  
Dev - Ref, Dynamic Range



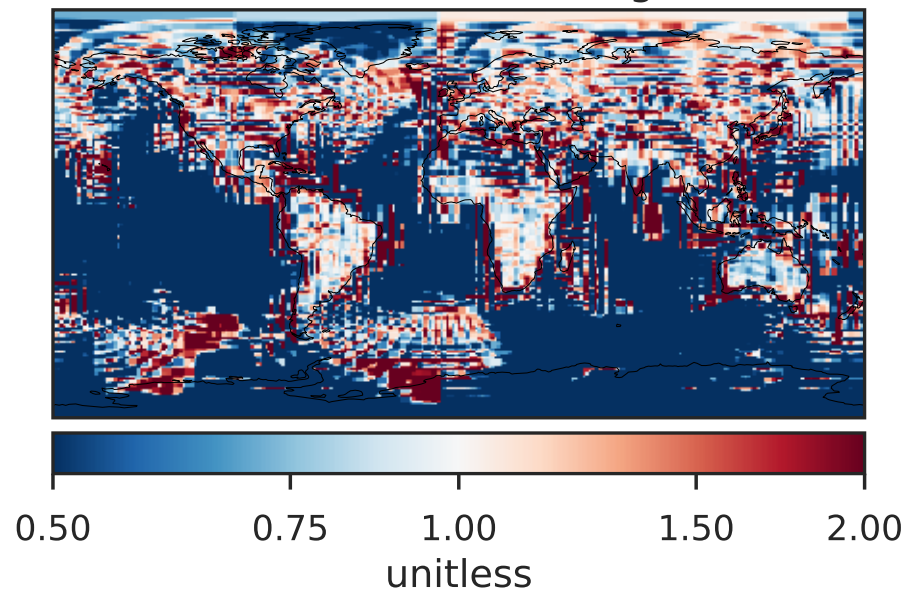
Difference (1x1.25)  
Dev - Ref, Restricted Range [5%,95%]



Ratio (1x1.25)  
Dev/Ref, Dynamic Range

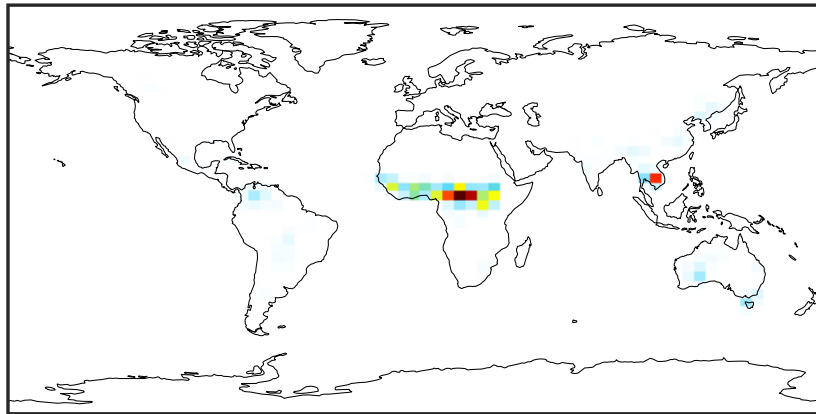


Ratio (1x1.25)  
Dev/Ref, Fixed Range



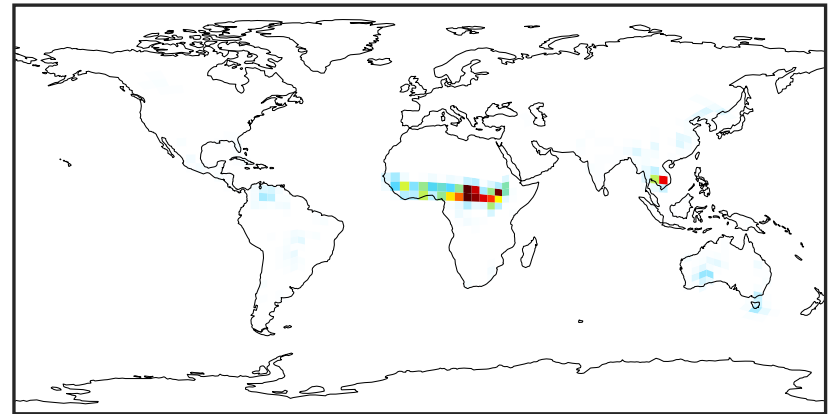
# SpeciesConcVV\_FURA (Jan2019)

14.3.0-rc.0 (Ref)  
4.0x5.0



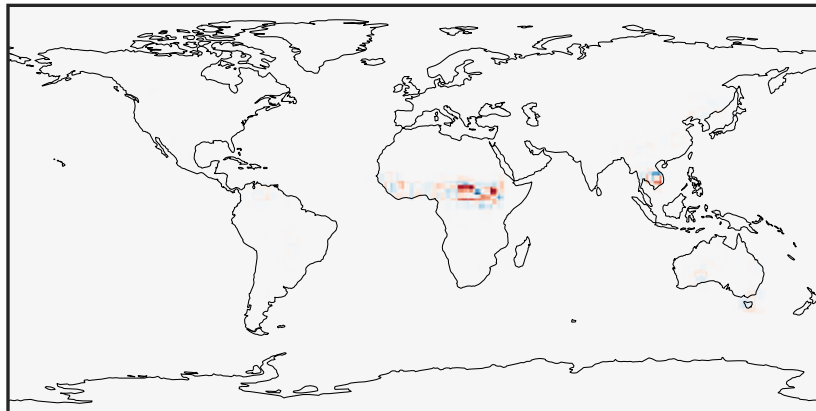
0.0000 0.1297 0.2594 0.3892 0.5189  
ppb

14.3.0-rc.0 (Dev)  
c24



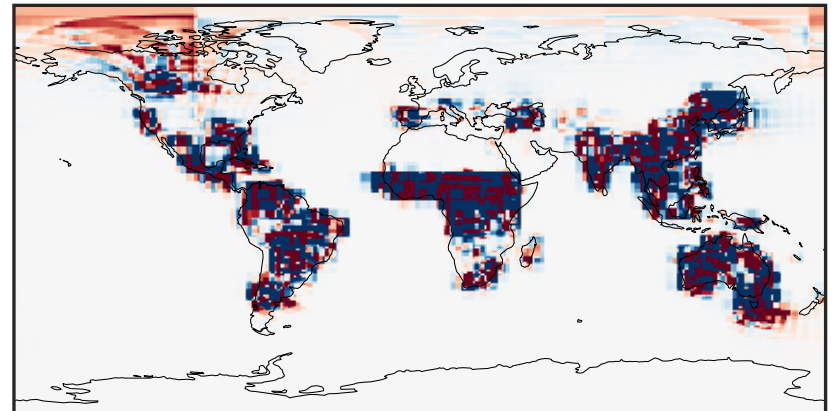
0.0000 0.1297 0.2594 0.3892 0.5189  
ppb

Difference (1x1.25)  
Dev - Ref, Dynamic Range



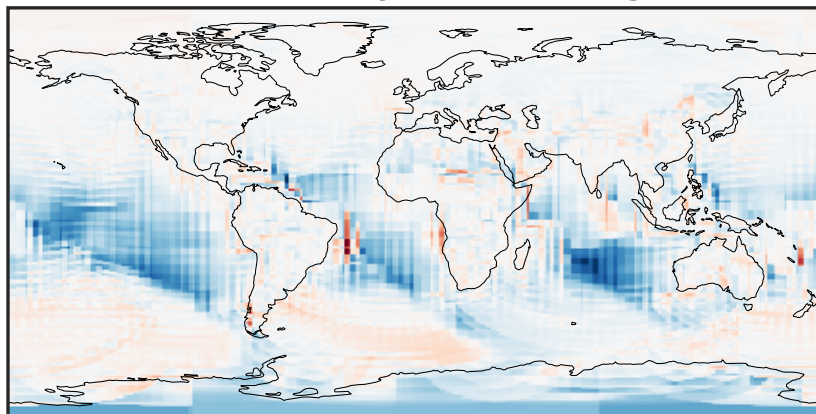
-0.3572 -0.1786 0.0000 0.1786 0.3572  
ppb

Difference (1x1.25)  
Dev - Ref, Restricted Range [5%,95%]



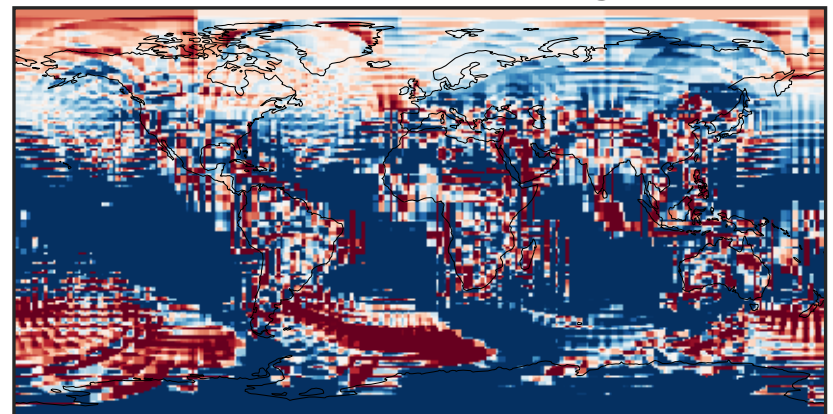
-0.00015 0.00000 0.00015  
ppb

Ratio (1x1.25)  
Dev/Ref, Dynamic Range



unitless

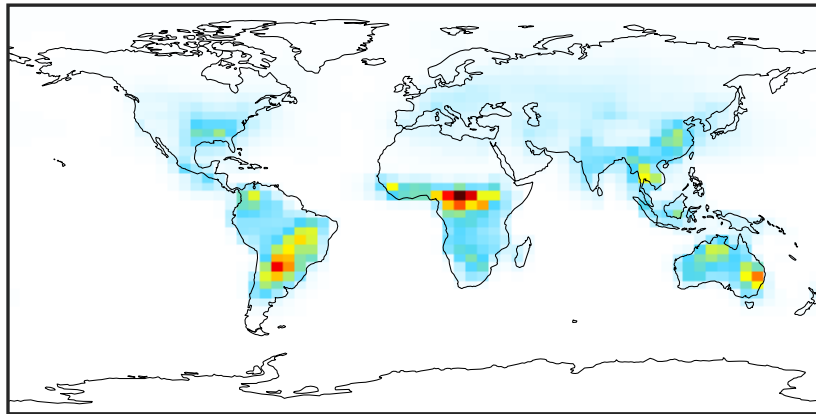
Ratio (1x1.25)  
Dev/Ref, Fixed Range



0.50 0.75 1.00 1.50 2.00  
unitless

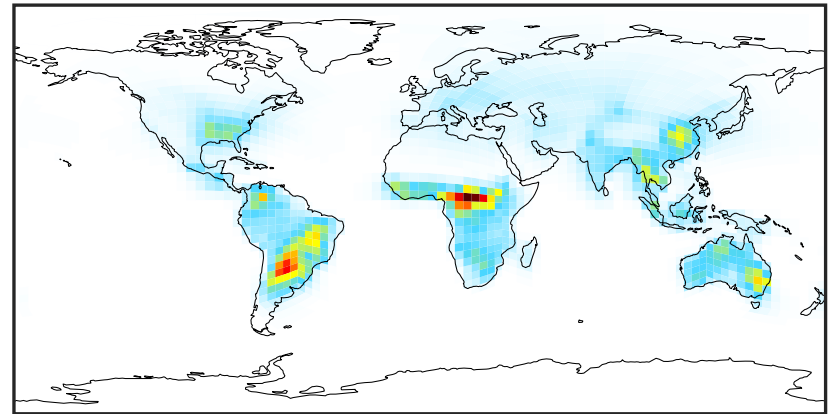
# SpeciesConcVV\_GLYC (Jan2019)

14.3.0-rc.0 (Ref)  
4.0x5.0



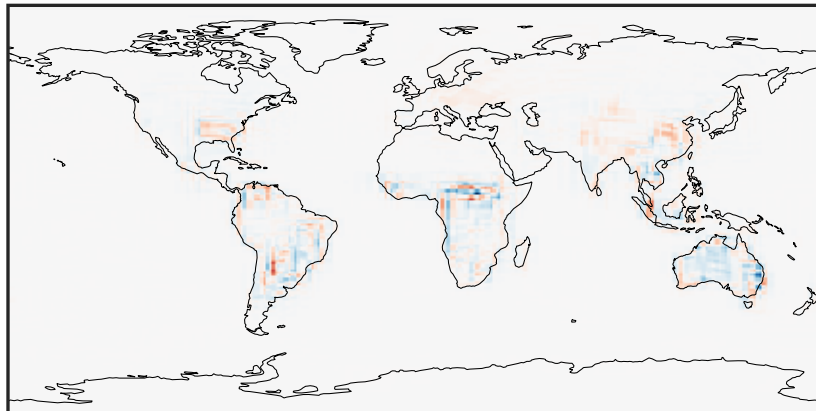
0.0000 0.2462 0.4923 0.7385 0.9847  
ppb

14.3.0-rc.0 (Dev)  
c24



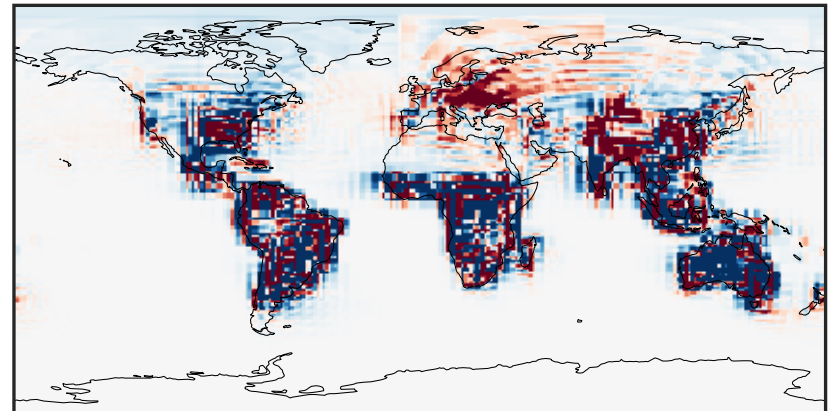
0.0000 0.2462 0.4923 0.7385 0.9847  
ppb

Difference (1x1.25)  
Dev - Ref, Dynamic Range



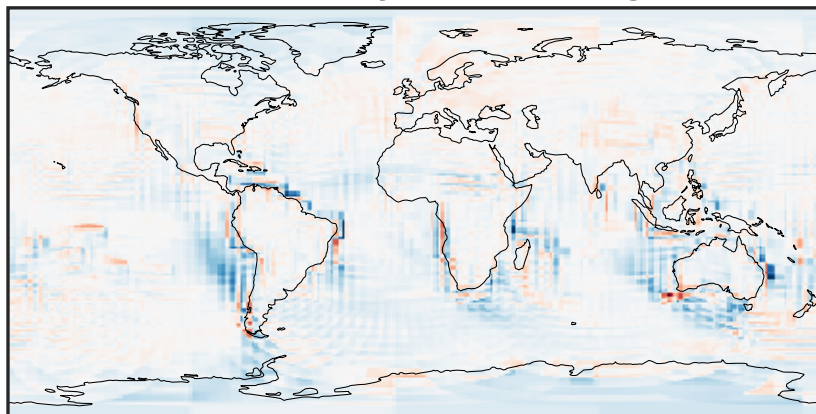
-0.4427 -0.2214 0.0000 0.2214 0.4427  
ppb

Difference (1x1.25)  
Dev - Ref, Restricted Range [5%,95%]



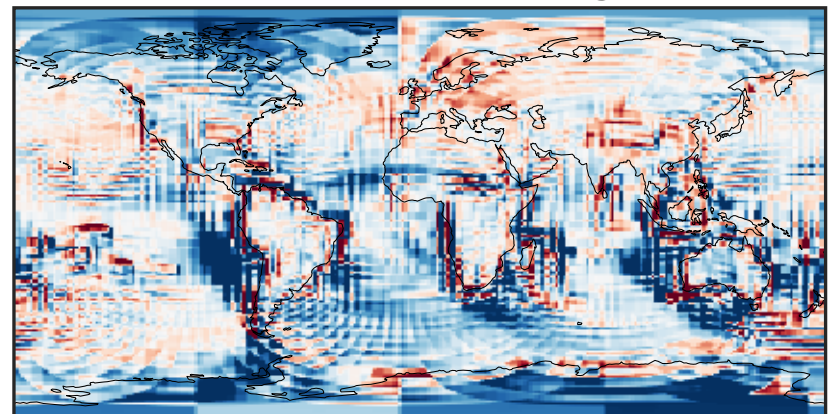
-0.008 0.000 0.008  
ppb

Ratio (1x1.25)  
Dev/Ref, Dynamic Range



1e-01 1 10  
unitless

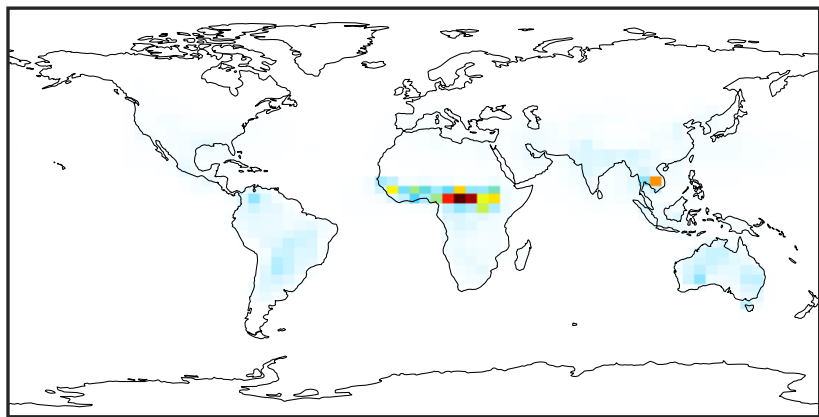
Ratio (1x1.25)  
Dev/Ref, Fixed Range



0.50 0.75 1.00 1.50 2.00  
unitless

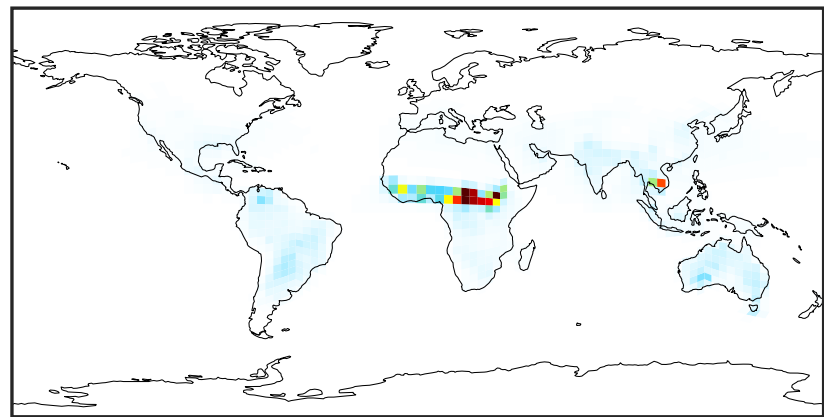
# SpeciesConcVV\_GLYX (Jan2019)

14.3.0-rc.0 (Ref)  
4.0x5.0



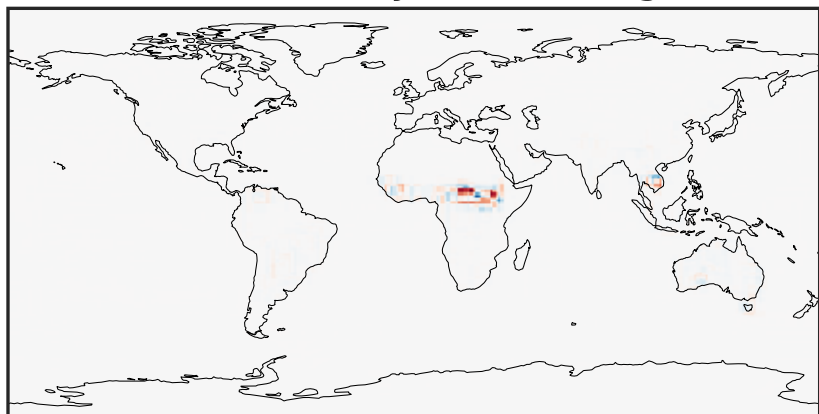
0.0000 0.1089 0.2177 0.3266 0.4354  
ppb

14.3.0-rc.0 (Dev)  
c24



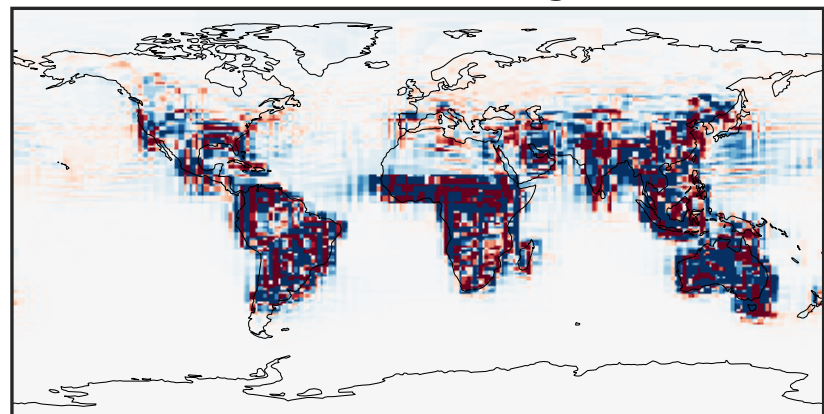
0.0000 0.1089 0.2177 0.3266 0.4354  
ppb

Difference (1x1.25)  
Dev - Ref, Dynamic Range



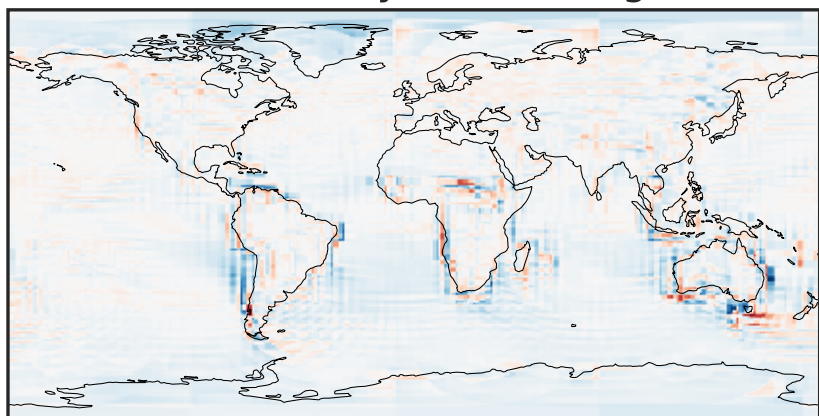
-0.316 -0.158 0.000 0.158 0.316  
ppb

Difference (1x1.25)  
Dev - Ref, Restricted Range [5%,95%]



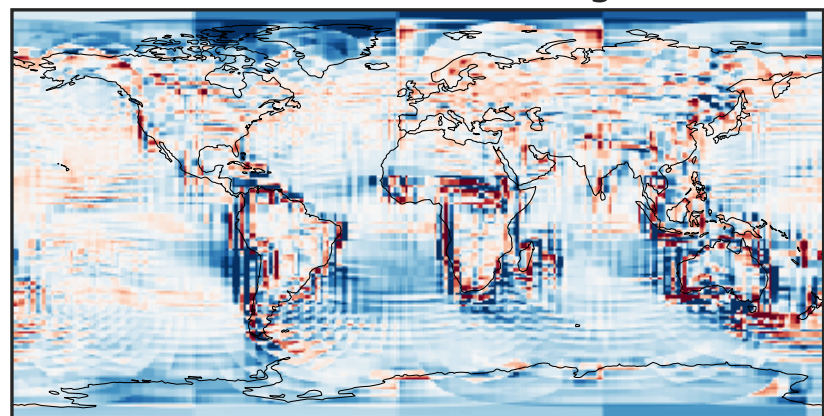
-0.0006 0.0000 0.0006  
ppb

Ratio (1x1.25)  
Dev/Ref, Dynamic Range



1e-01 1 10  
unitless

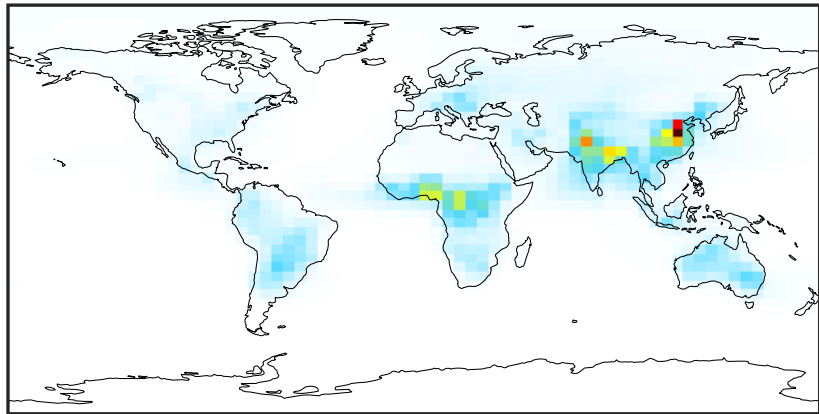
Ratio (1x1.25)  
Dev/Ref, Fixed Range



0.50 0.75 1.00 1.50 2.00  
unitless

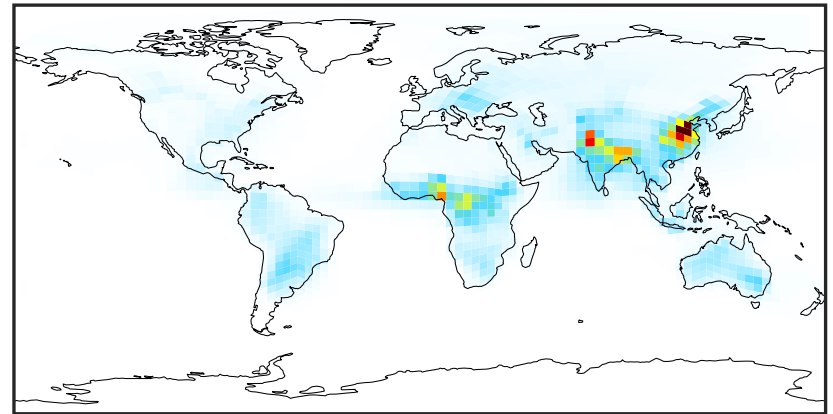
# SpeciesConcVV\_HCOOH (Jan2019)

14.3.0-rc.0 (Ref)  
4.0x5.0



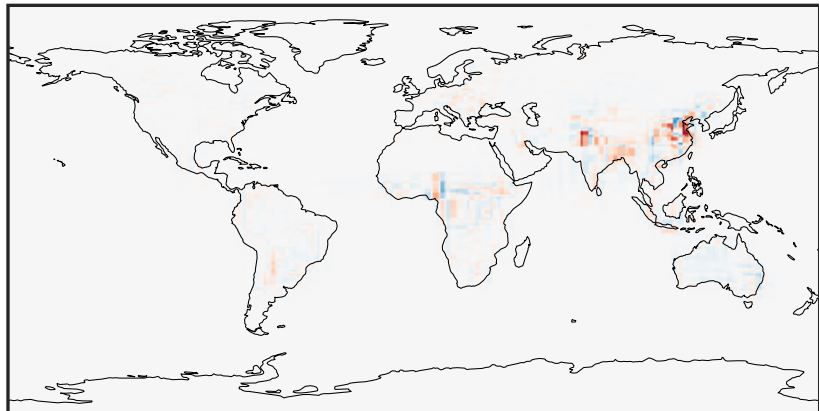
0.000 1.304 2.607 3.911 5.214  
ppb

14.3.0-rc.0 (Dev)  
c24



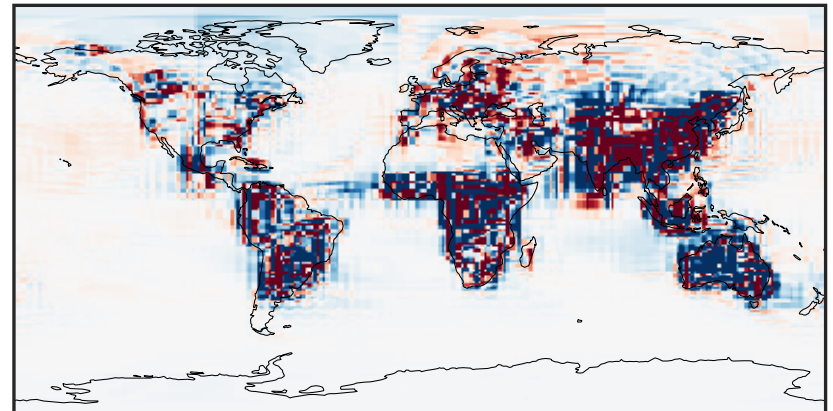
0.000 1.304 2.607 3.911 5.214  
ppb

Difference (1x1.25)  
Dev - Ref, Dynamic Range



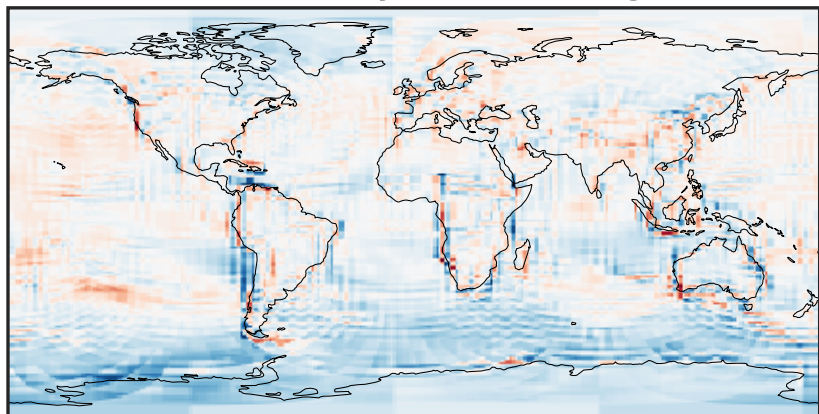
-2.358 -1.179 0.000 1.179 2.358  
ppb

Difference (1x1.25)  
Dev - Ref, Restricted Range [5%,95%]



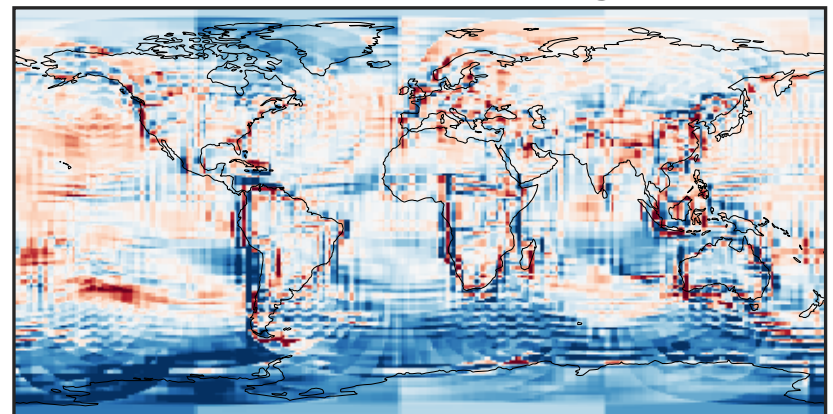
-0.025 0.000 0.025  
ppb

Ratio (1x1.25)  
Dev/Ref, Dynamic Range



0.191 0.595 1.000 3.122 5.244  
unitless

Ratio (1x1.25)  
Dev/Ref, Fixed Range

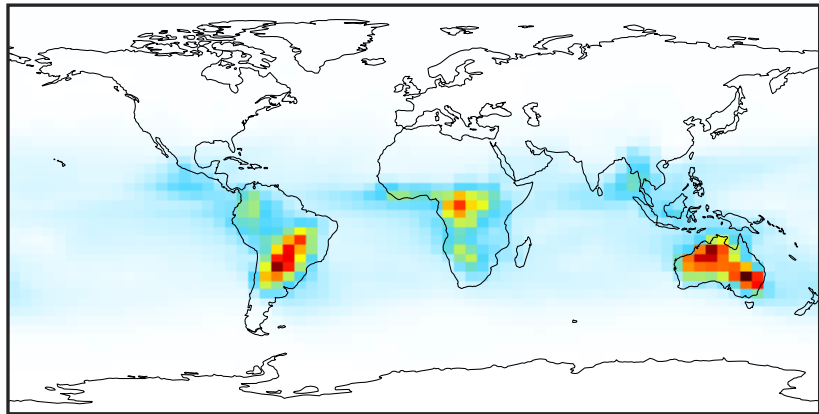


0.50 0.75 1.00 1.50 2.00  
unitless



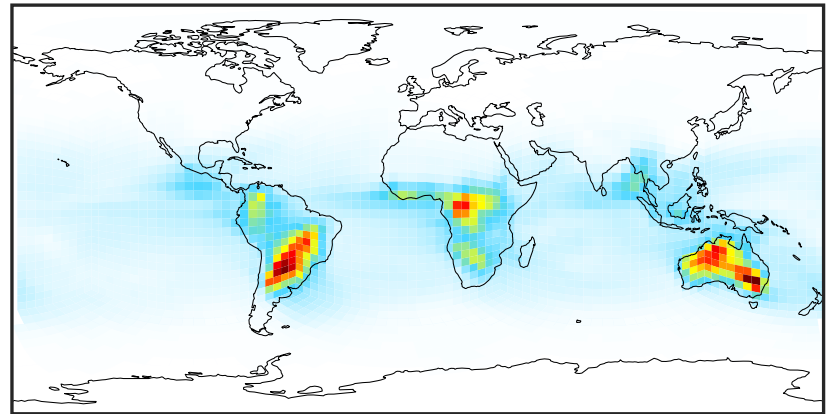
# SpeciesConcVV\_MAP (Jan2019)

14.3.0-rc.0 (Ref)  
4.0x5.0



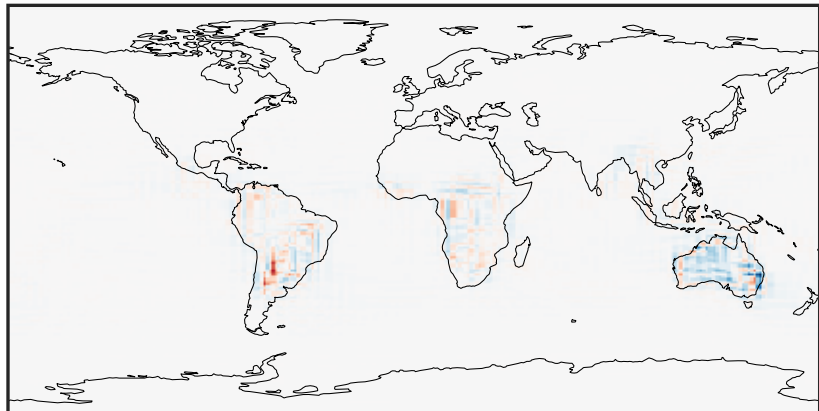
0.001 0.287 0.572 0.858 1.143  
ppb

14.3.0-rc.0 (Dev)  
c24



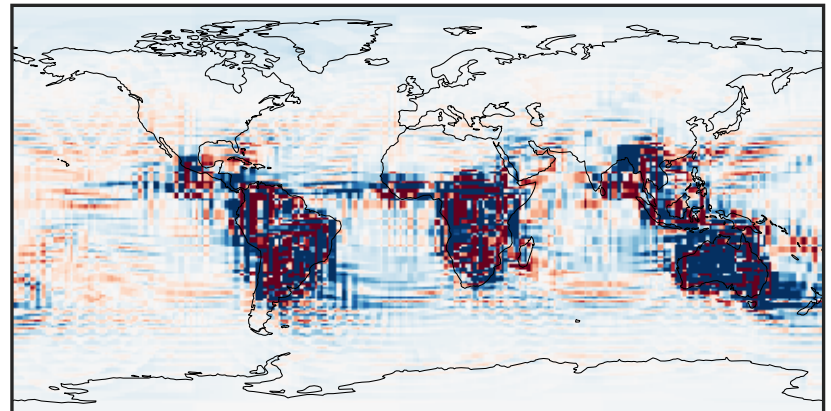
0.001 0.287 0.572 0.858 1.143  
ppb

Difference (1x1.25)  
Dev - Ref, Dynamic Range



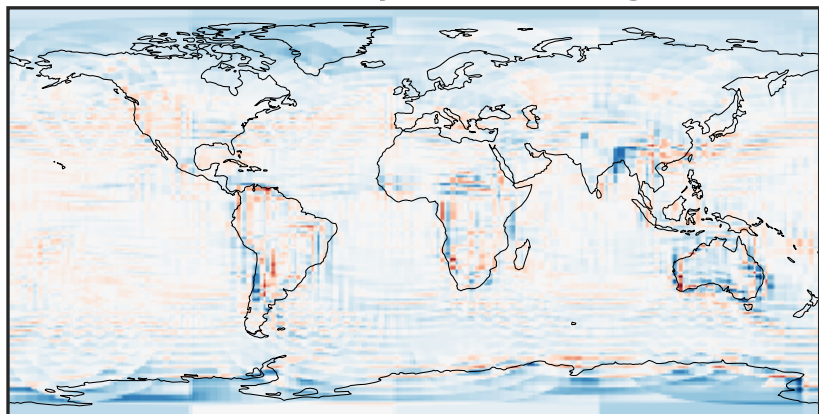
-0.564 -0.282 0.000 0.282 0.564  
ppb

Difference (1x1.25)  
Dev - Ref, Restricted Range [5%,95%]



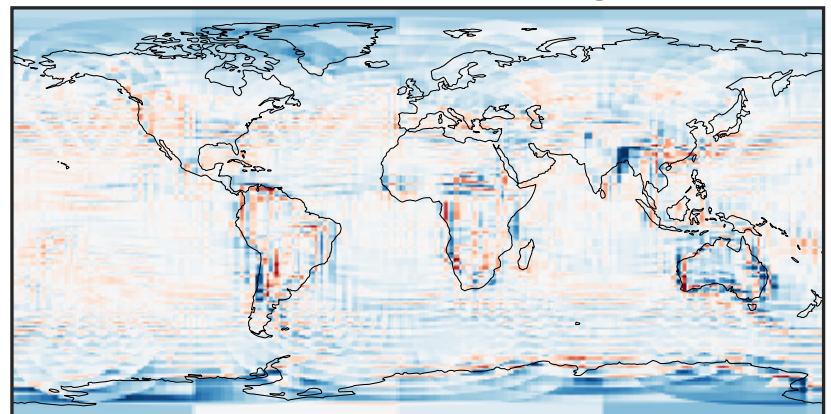
-0.008 0.000 0.008  
ppb

Ratio (1x1.25)  
Dev/Ref, Dynamic Range



0.389 0.694 1.000 1.787 2.574  
unitless

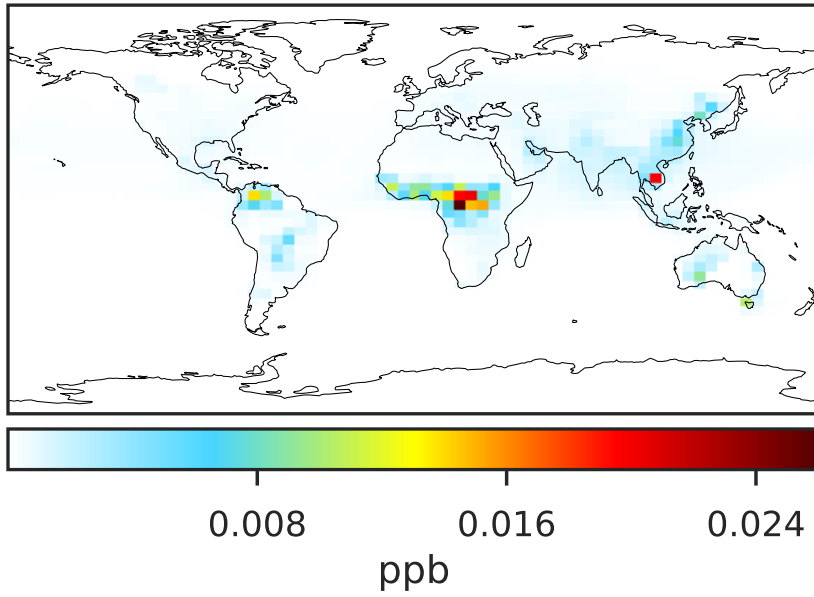
Ratio (1x1.25)  
Dev/Ref, Fixed Range



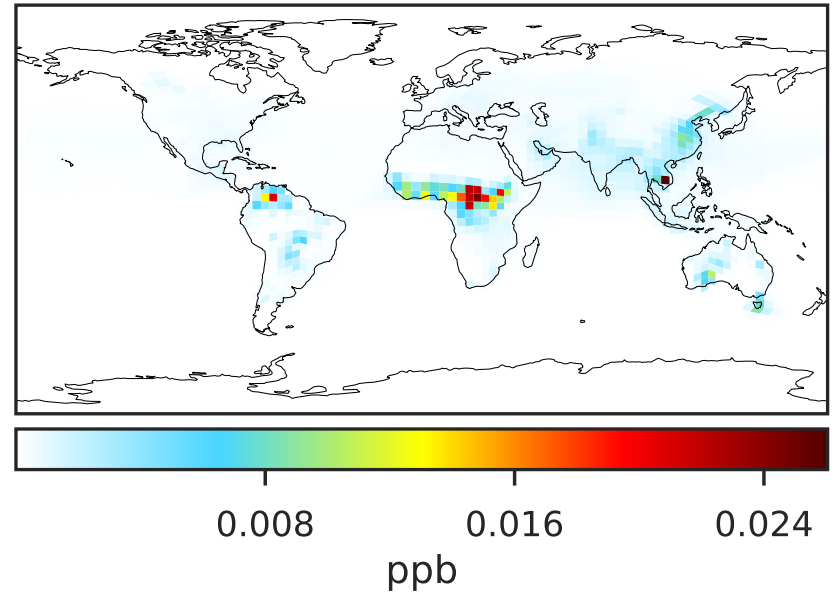
0.50 0.75 1.00 1.50 2.00  
unitless

# SpeciesConcVV\_PHEN (Jan2019)

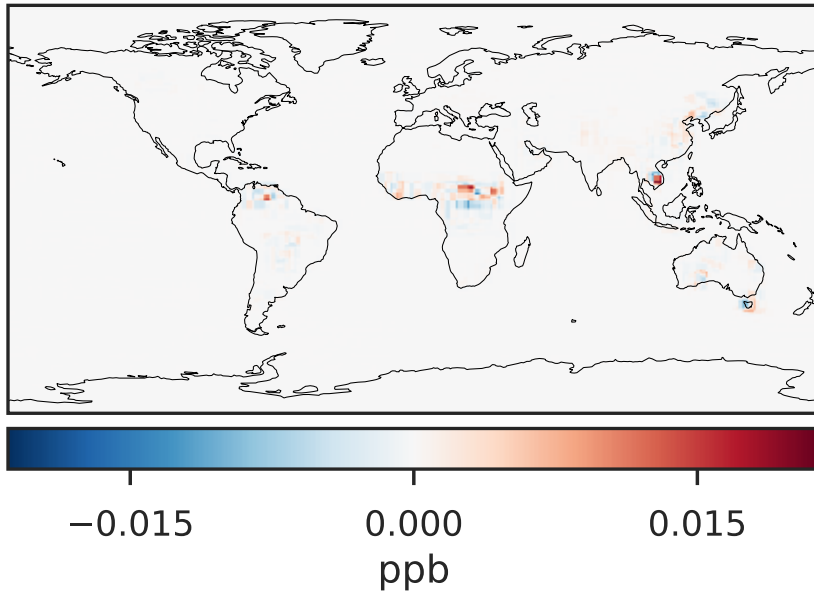
14.3.0-rc.0 (Ref)  
4.0x5.0



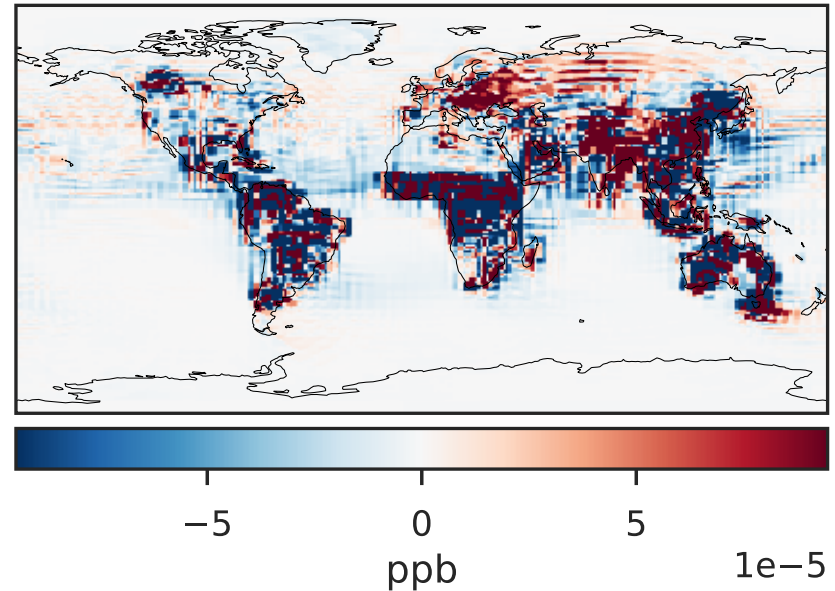
14.3.0-rc.0 (Dev)  
c24



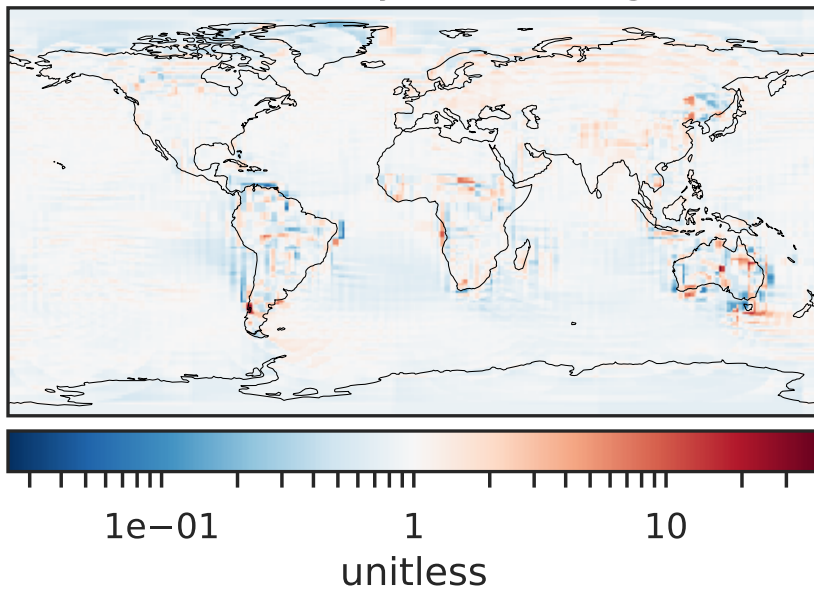
Difference (1x1.25)  
Dev - Ref, Dynamic Range



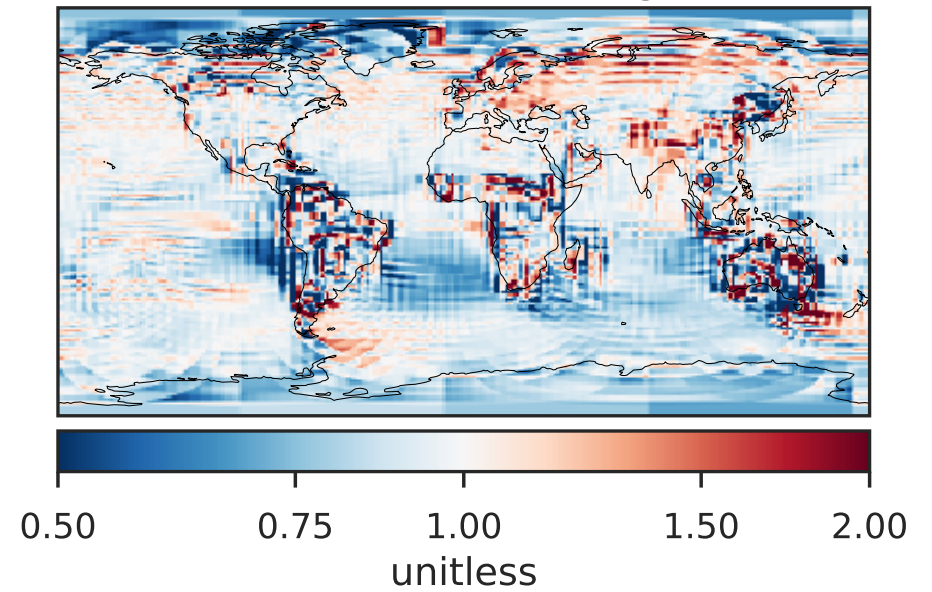
Difference (1x1.25)  
Dev - Ref, Restricted Range [5%,95%]



Ratio (1x1.25)  
Dev/Ref, Dynamic Range

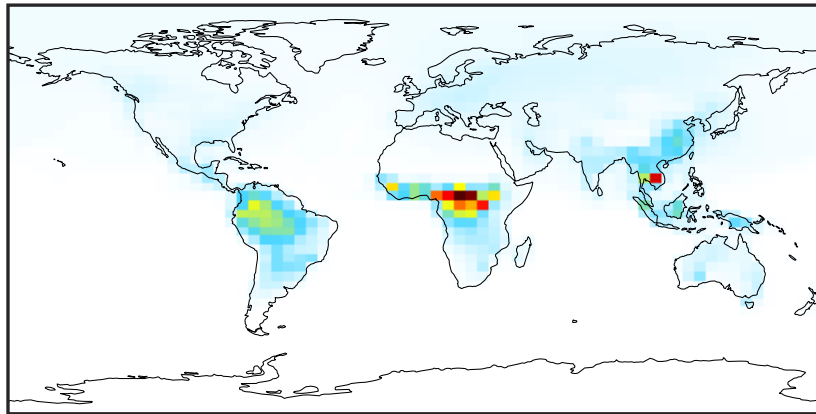


Ratio (1x1.25)  
Dev/Ref, Fixed Range



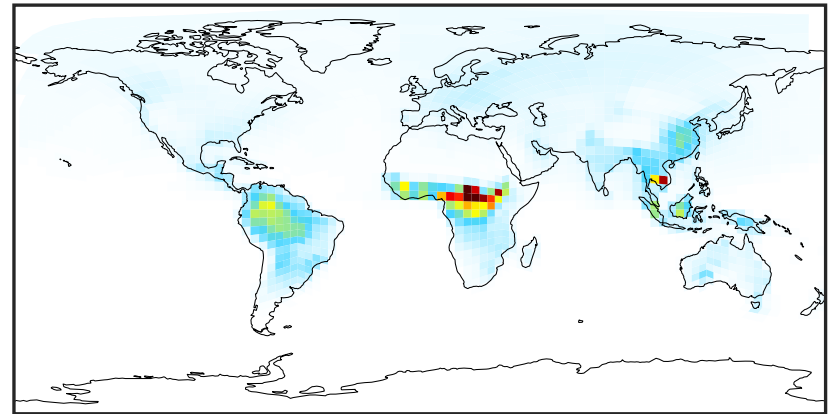
# SpeciesConcVV\_RCHO (Jan2019)

14.3.0-rc.0 (Ref)  
4.0x5.0



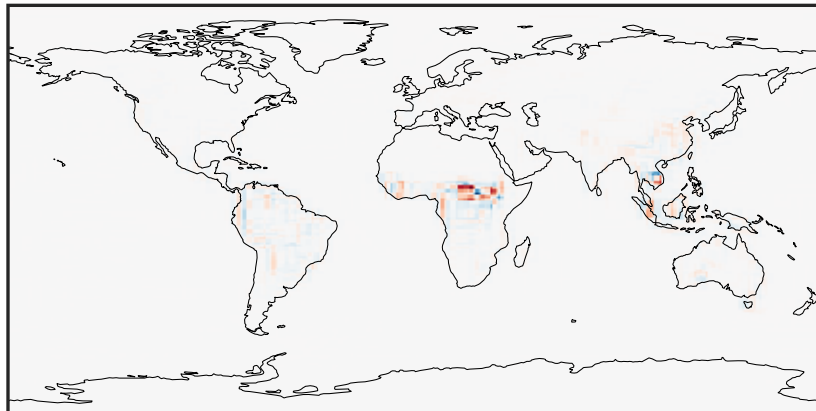
0.000 0.458 0.916 1.374 1.832  
ppb

14.3.0-rc.0 (Dev)  
c24



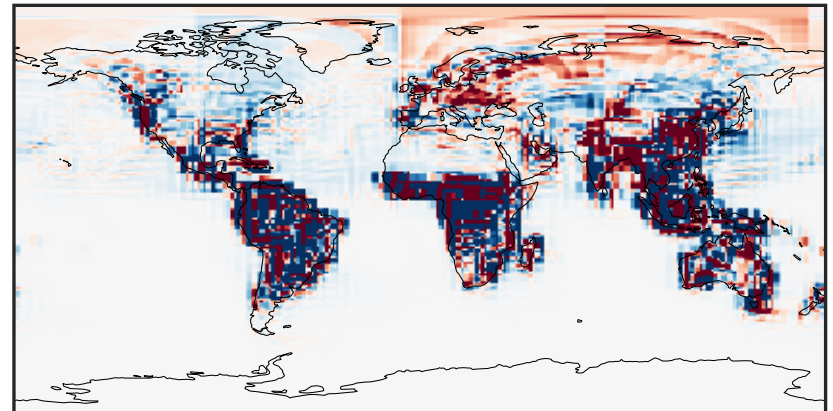
0.000 0.458 0.916 1.374 1.832  
ppb

Difference (1x1.25)  
Dev - Ref, Dynamic Range



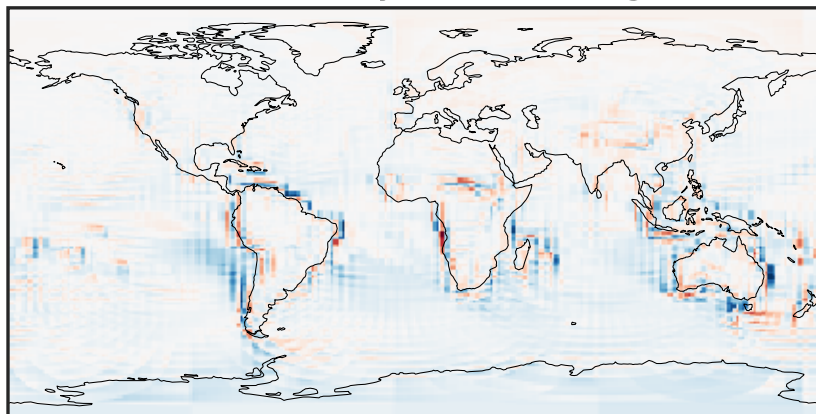
-1.228 -0.614 0.000 0.614 1.228  
ppb

Difference (1x1.25)  
Dev - Ref, Restricted Range [5%,95%]



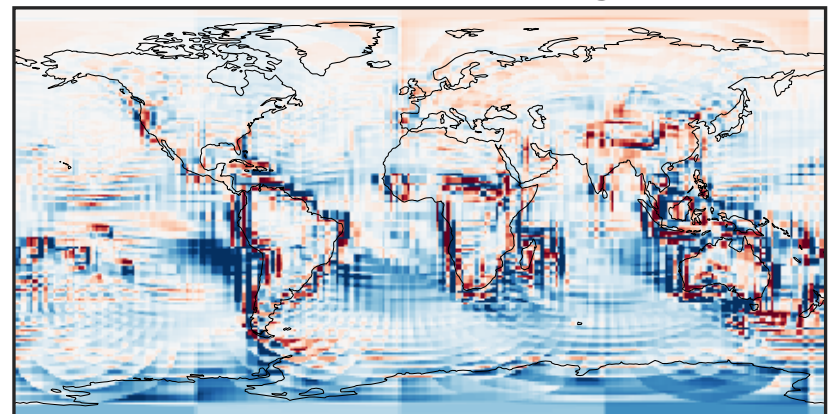
-0.008 0.000 0.008  
ppb

Ratio (1x1.25)  
Dev/Ref, Dynamic Range



1e-01 1 10  
unitless

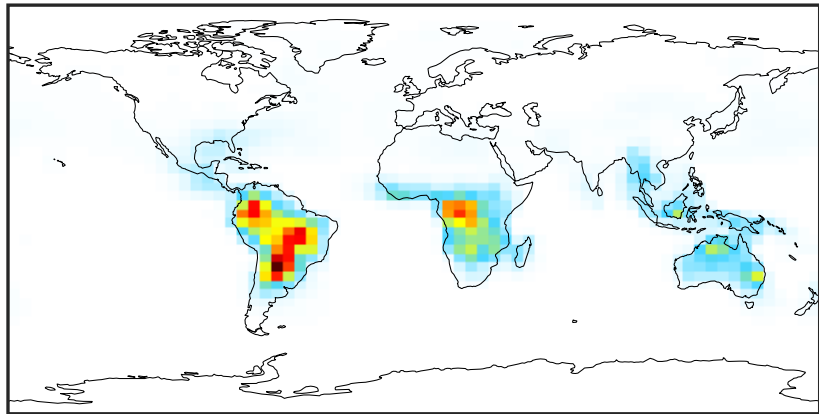
Ratio (1x1.25)  
Dev/Ref, Fixed Range



0.50 0.75 1.00 1.50 2.00  
unitless

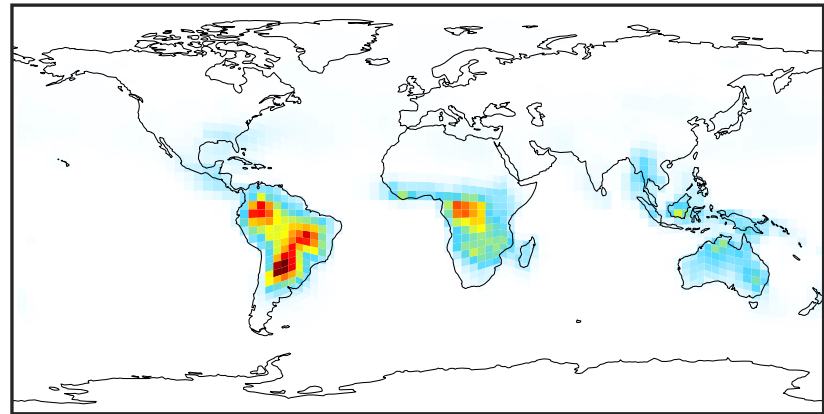
# SpeciesConcVV\_ETHP (Jan2019)

14.3.0-rc.0 (Ref)  
4.0x5.0



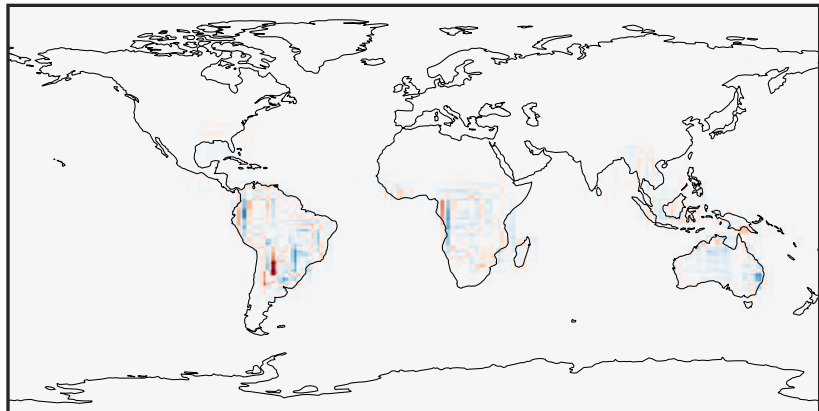
0.0000 0.0493 0.0986 0.1479 0.1971  
ppb

14.3.0-rc.0 (Dev)  
c24



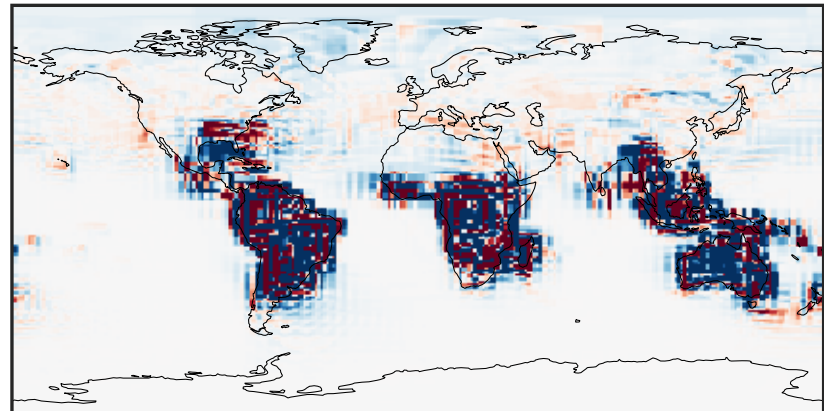
0.0000 0.0493 0.0986 0.1479 0.1971  
ppb

Difference (1x1.25)  
Dev - Ref, Dynamic Range



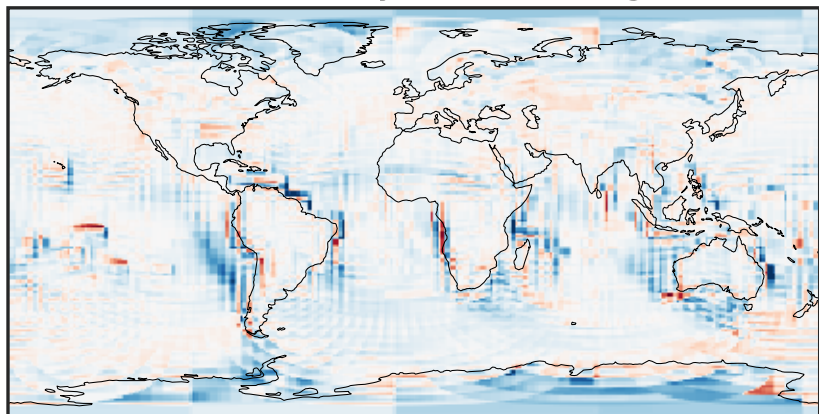
-0.092 -0.046 0.000 0.046 0.092  
ppb

Difference (1x1.25)  
Dev - Ref, Restricted Range [5%,95%]



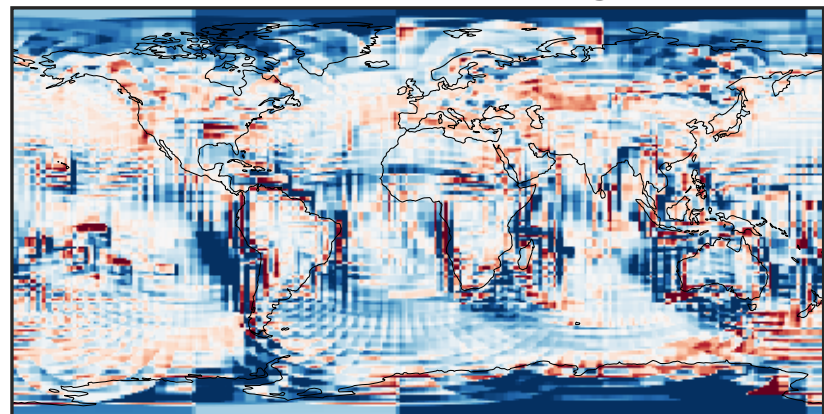
-0.0015 0.0000 0.0015  
ppb

Ratio (1x1.25)  
Dev/Ref, Dynamic Range



1e-01 1 10  
unitless

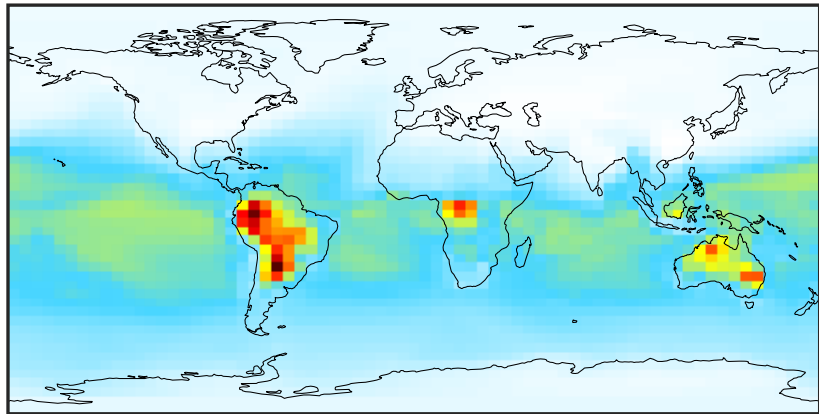
Ratio (1x1.25)  
Dev/Ref, Fixed Range



0.50 0.75 1.00 1.50 2.00  
unitless

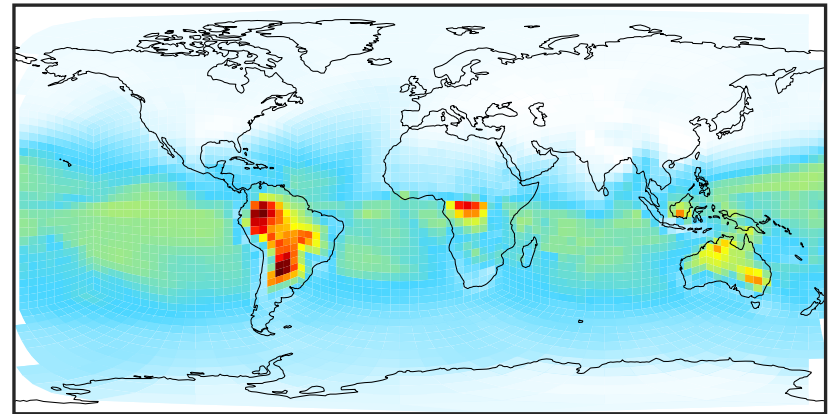
# SpeciesConcVV\_MP (Jan2019)

14.3.0-rc.0 (Ref)  
4.0x5.0



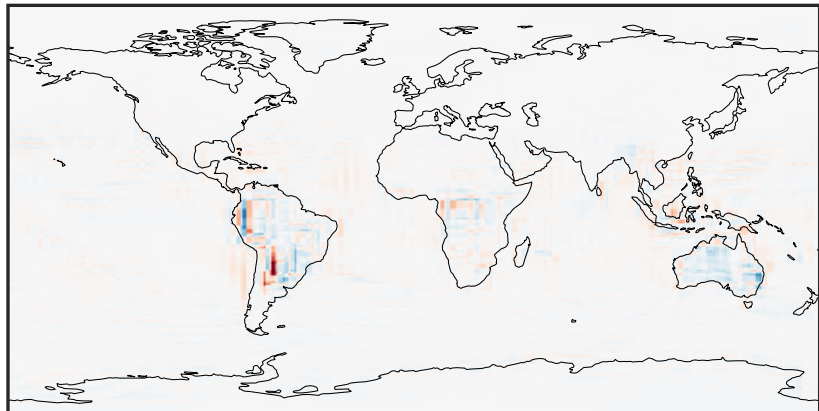
0.023 0.640 1.257 1.874 2.491  
ppb

14.3.0-rc.0 (Dev)  
c24



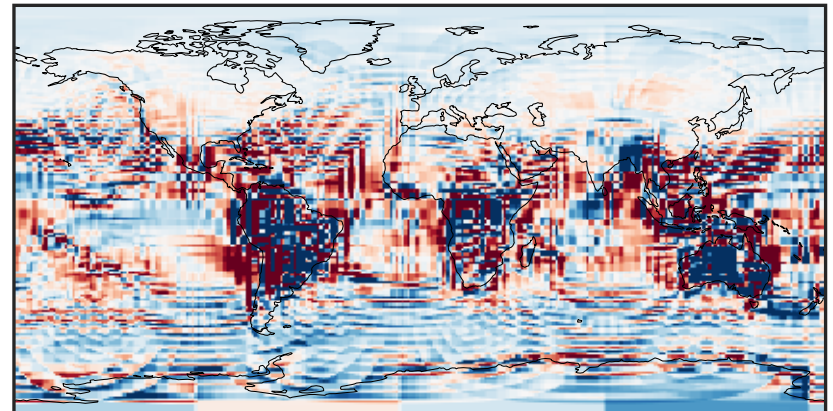
0.023 0.640 1.257 1.874 2.491  
ppb

Difference (1x1.25)  
Dev - Ref, Dynamic Range



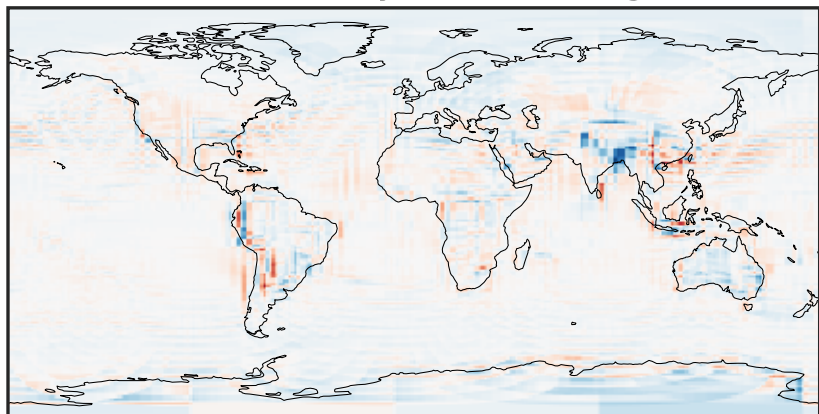
-1.167 -0.583 0.000 0.583 1.167  
ppb

Difference (1x1.25)  
Dev - Ref, Restricted Range [5%,95%]



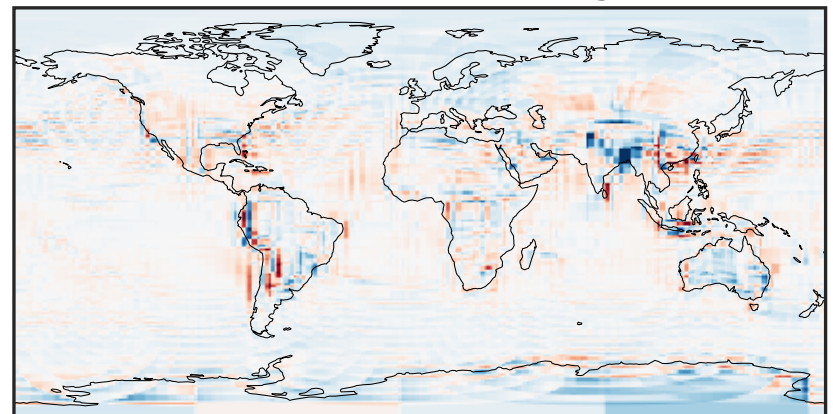
-0.025 0.000 0.025  
ppb

Ratio (1x1.25)  
Dev/Ref, Dynamic Range



0.355 0.677 1.000 1.909 2.817  
unitless

Ratio (1x1.25)  
Dev/Ref, Fixed Range



0.50 0.75 1.00 1.50 2.00  
unitless