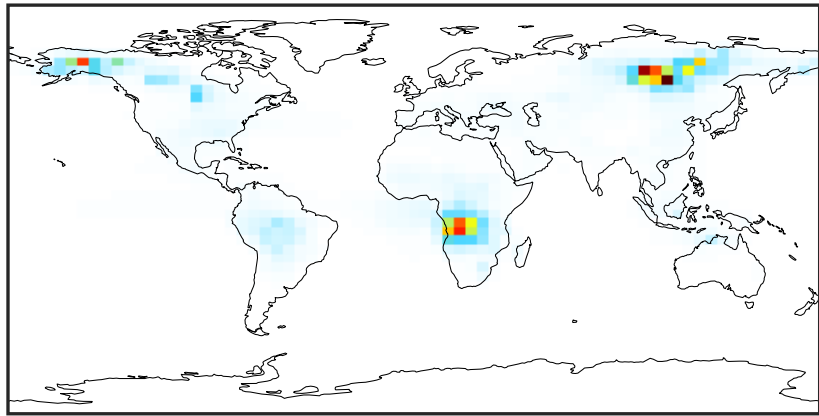


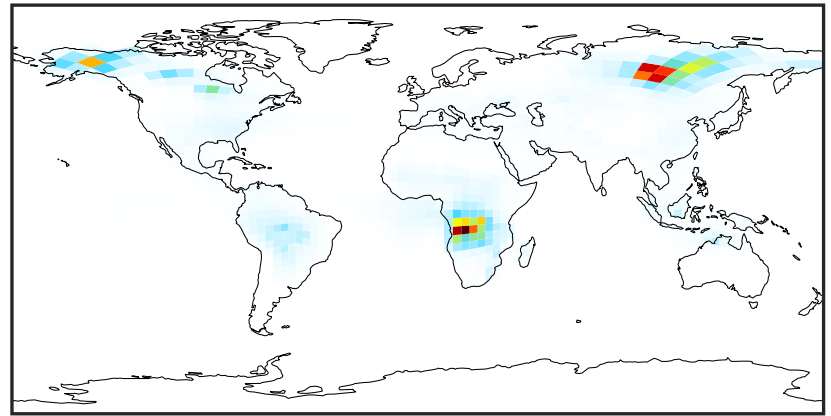
# SpeciesConcVV\_ACTA (Jul2019)

14.3.0-rc.0 (Ref)  
4.0x5.0



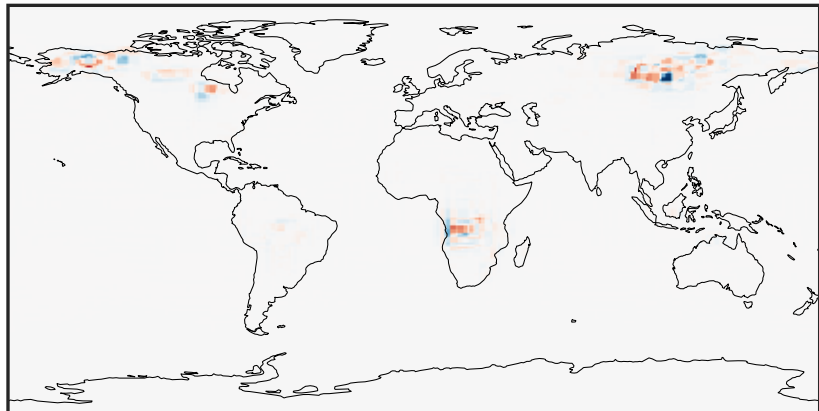
0.00 3.15 6.30 9.45 12.59  
ppb

14.3.0-rc.0 (Dev)  
c24



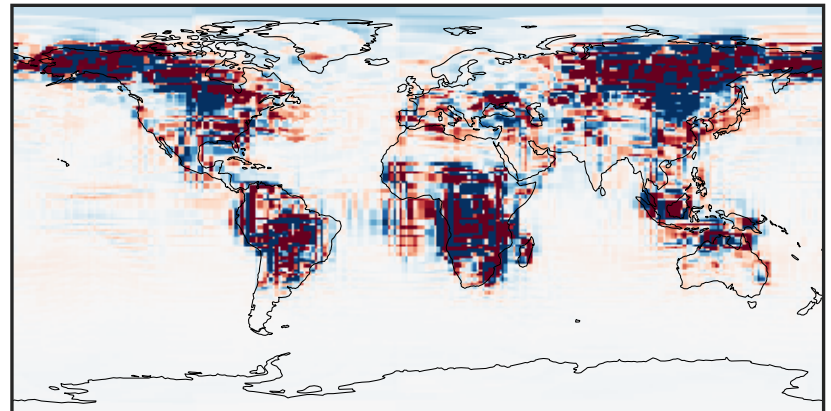
0.00 3.15 6.30 9.45 12.59  
ppb

Difference (1x1.25)  
Dev - Ref, Dynamic Range



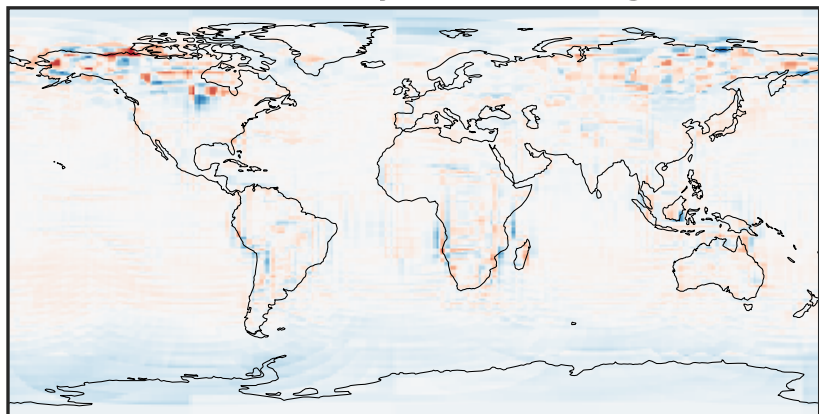
-8.44 -4.22 0.00 4.22 8.44  
ppb

Difference (1x1.25)  
Dev - Ref, Restricted Range [5%,95%]



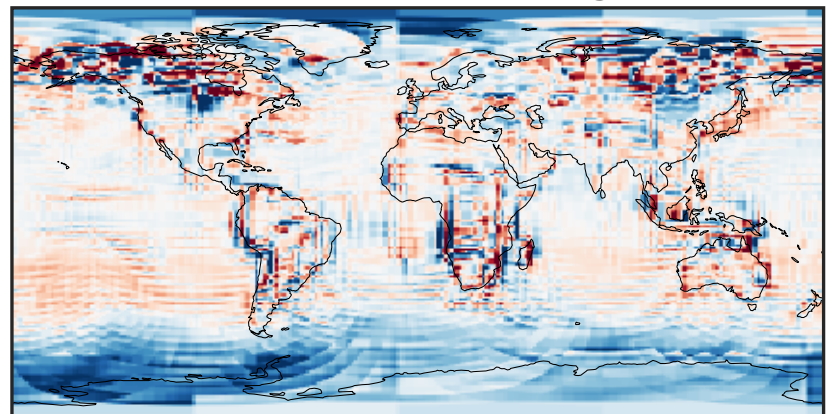
-0.02 0.00 0.02  
ppb

Ratio (1x1.25)  
Dev/Ref, Dynamic Range



1e-01 1 10  
unitless

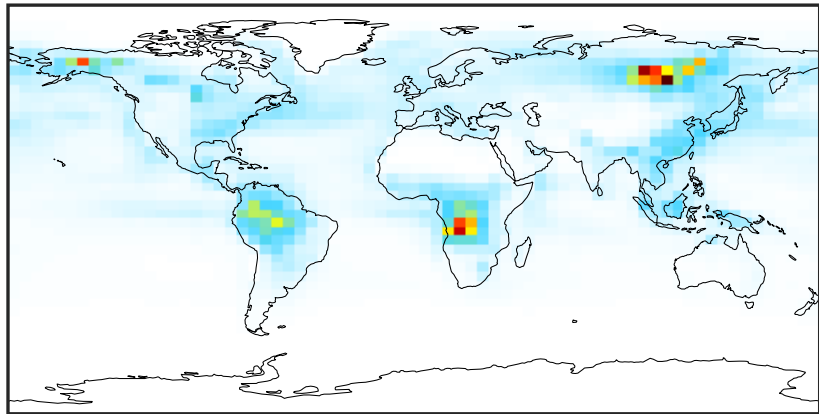
Ratio (1x1.25)  
Dev/Ref, Fixed Range



0.50 0.75 1.00 1.50 2.00  
unitless

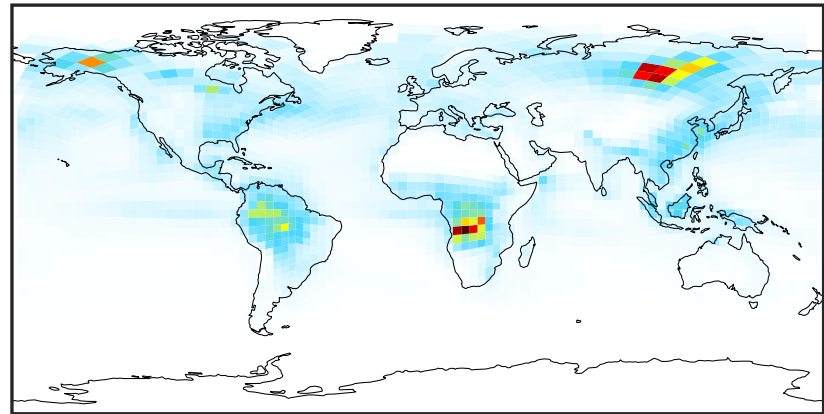
# SpeciesConcVV\_ALD2 (Jul2019)

14.3.0-rc.0 (Ref)  
4.0x5.0



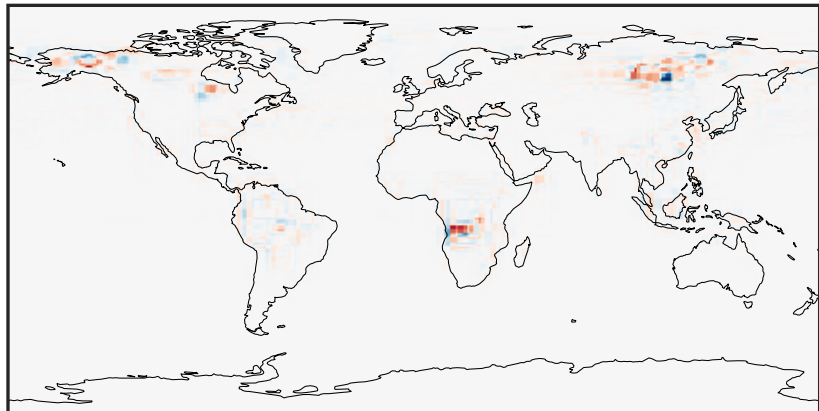
0.003 1.538 3.074 4.609 6.145  
ppb

14.3.0-rc.0 (Dev)  
c24



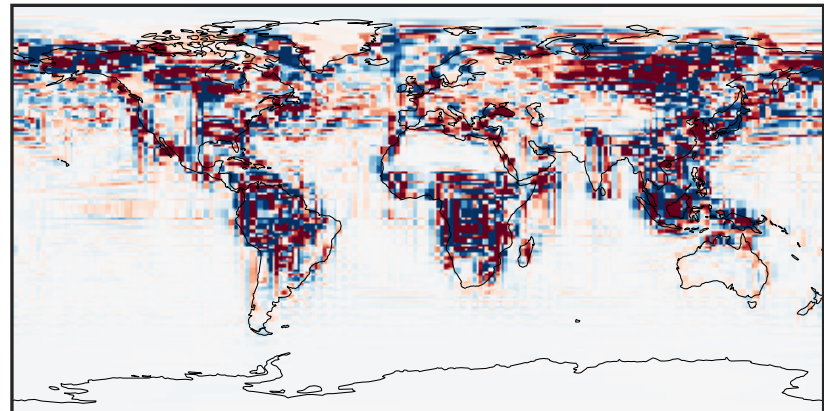
0.003 1.538 3.074 4.609 6.145  
ppb

Difference (1x1.25)  
Dev - Ref, Dynamic Range



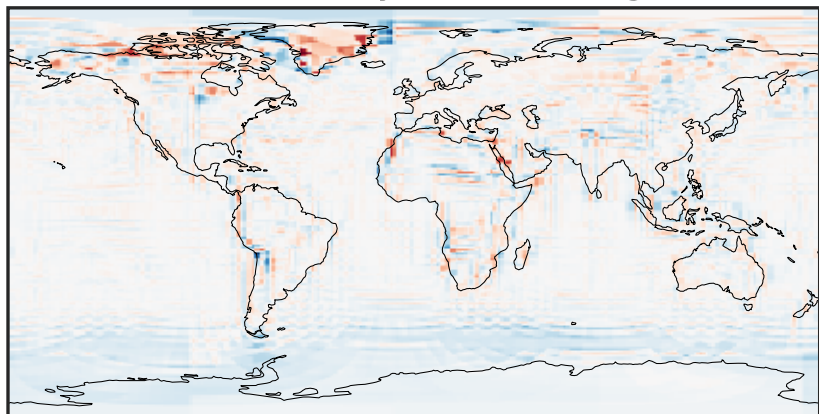
-3.538 -1.769 0.000 1.769 3.538  
ppb

Difference (1x1.25)  
Dev - Ref, Restricted Range [5%,95%]



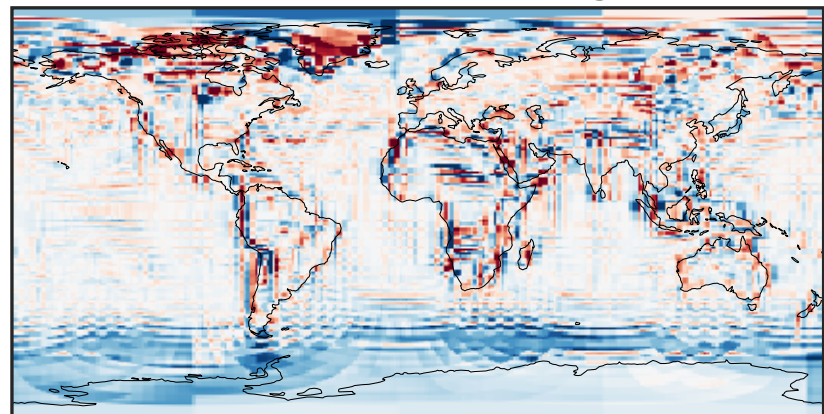
-0.10 -0.05 0.00 0.05 0.10  
ppb

Ratio (1x1.25)  
Dev/Ref, Dynamic Range



1e-01 1 10  
unitless

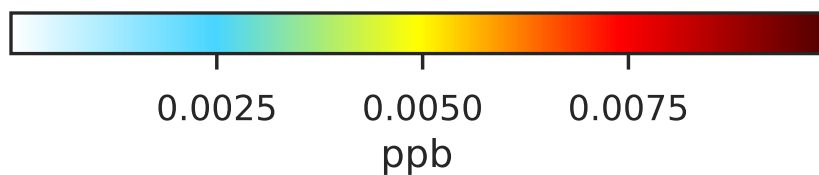
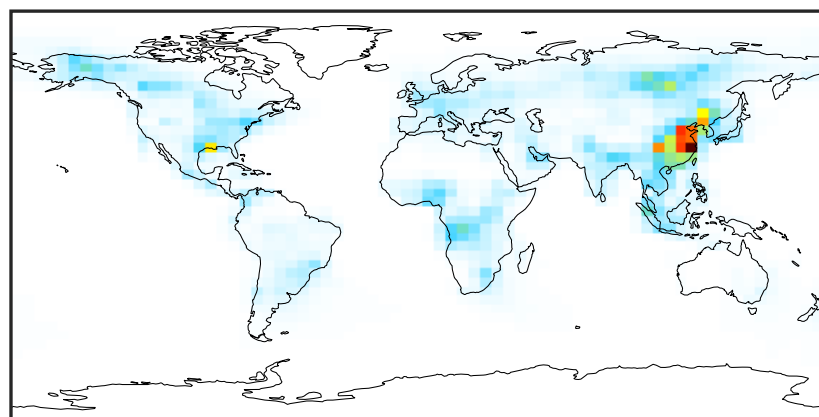
Ratio (1x1.25)  
Dev/Ref, Fixed Range



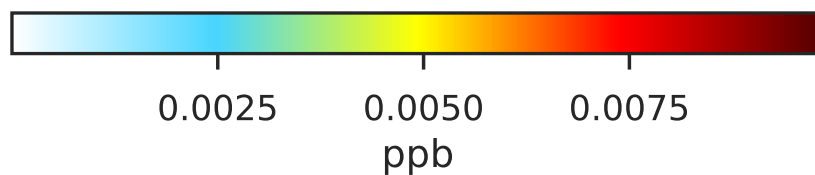
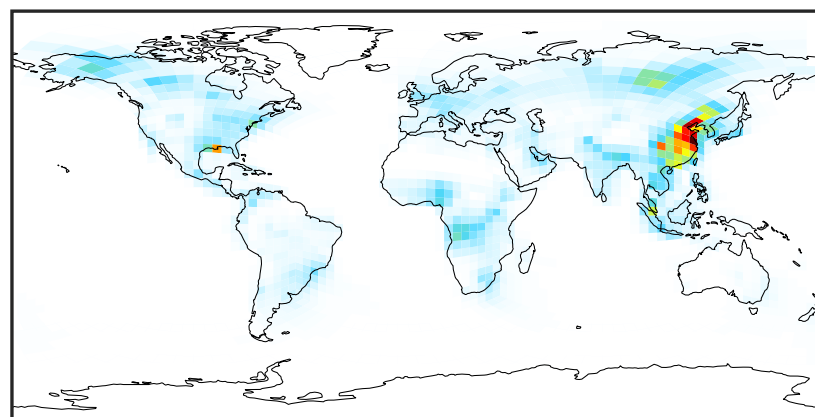
0.50 0.75 1.00 1.50 2.00  
unitless

# SpeciesConcVV\_BALD (Jul2019)

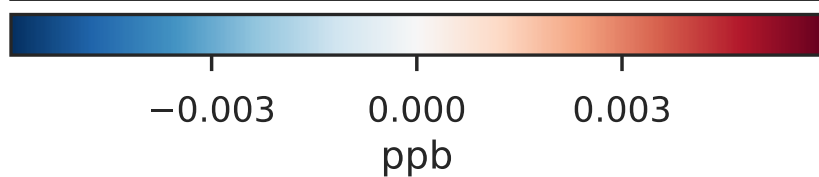
14.3.0-rc.0 (Ref)  
4.0x5.0



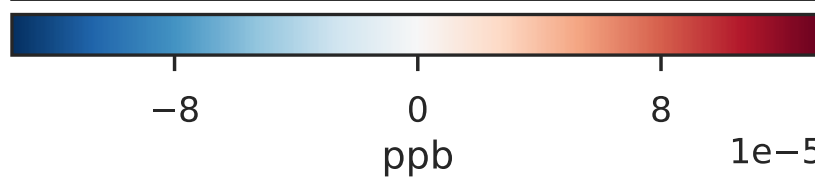
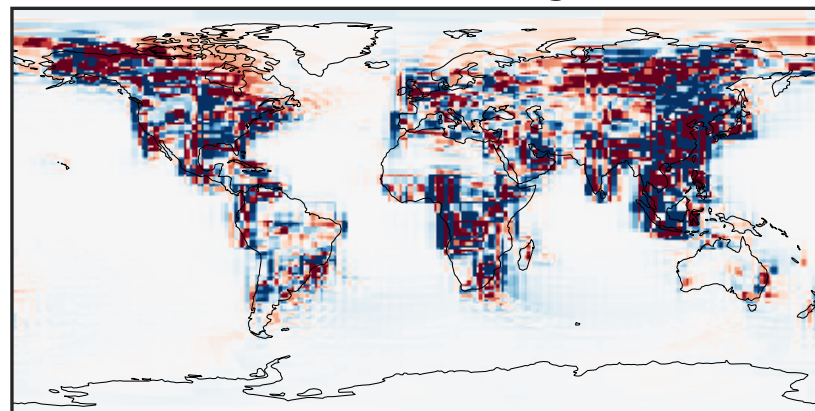
14.3.0-rc.0 (Dev)  
c24



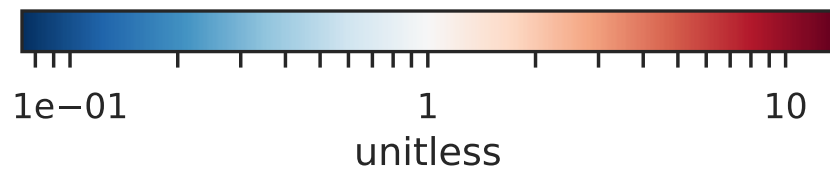
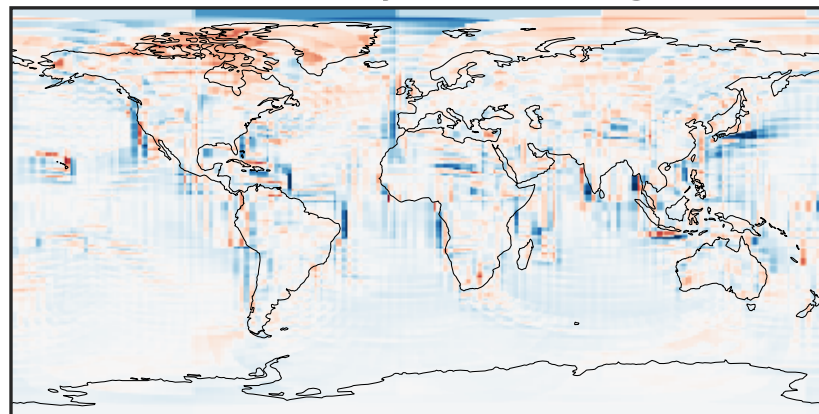
Difference (1x1.25)  
Dev - Ref, Dynamic Range



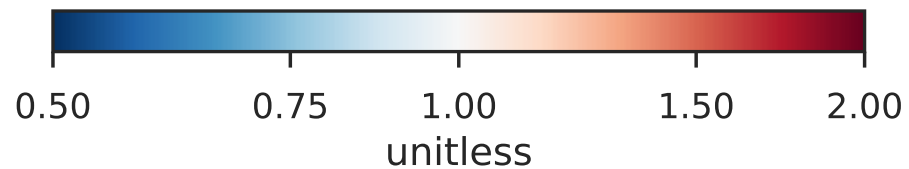
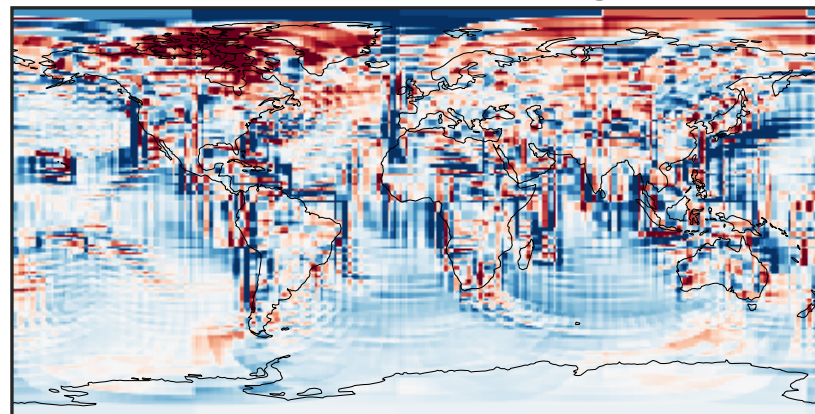
Difference (1x1.25)  
Dev - Ref, Restricted Range [5%,95%]



Ratio (1x1.25)  
Dev/Ref, Dynamic Range

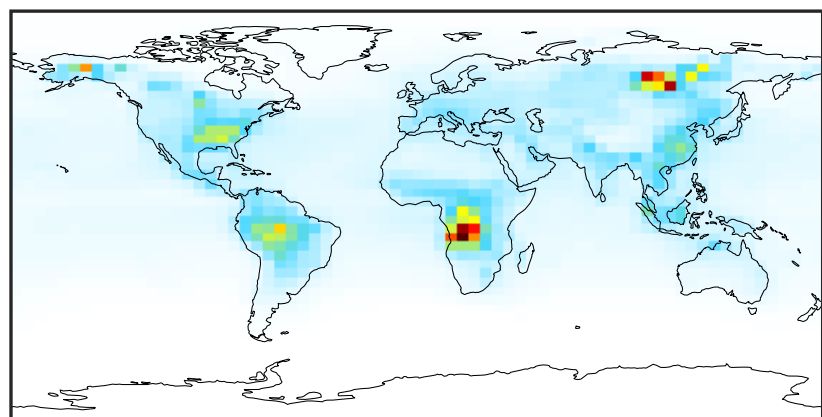


Ratio (1x1.25)  
Dev/Ref, Fixed Range



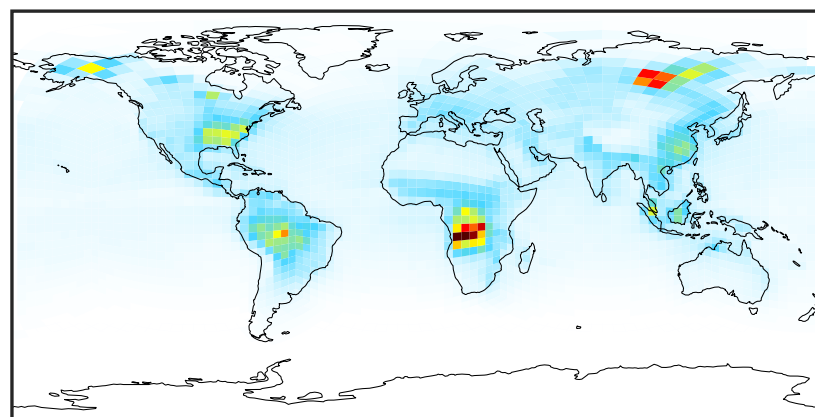
# SpeciesConcVV\_CH2O (Jul2019)

14.3.0-rc.0 (Ref)  
4.0x5.0



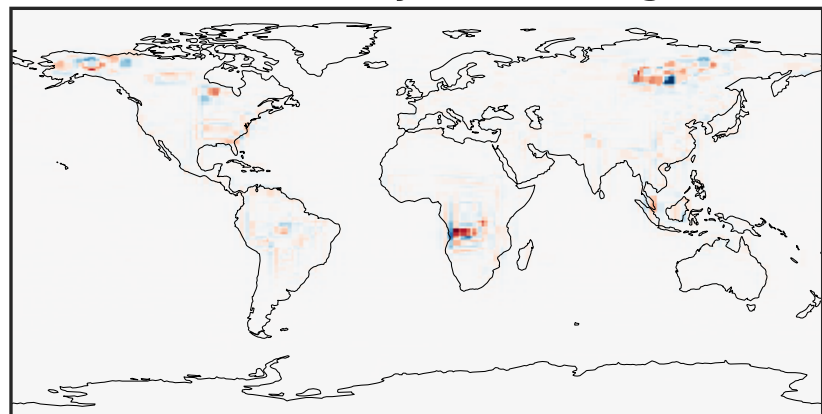
0.01 2.98 5.94 8.90 11.86  
ppb

14.3.0-rc.0 (Dev)  
c24



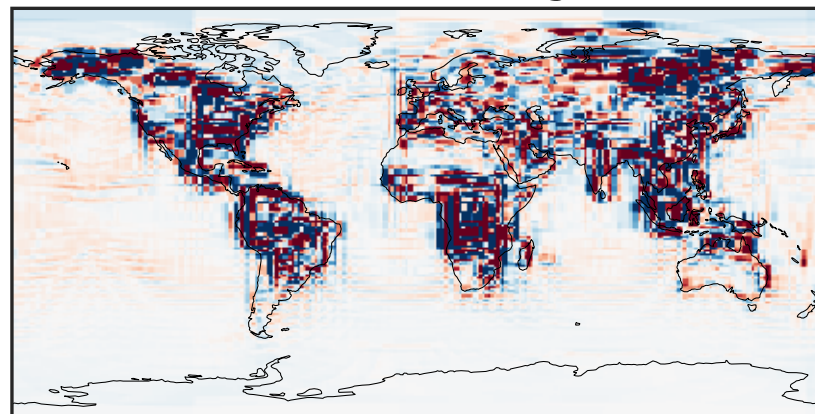
0.01 2.98 5.94 8.90 11.86  
ppb

Difference (1x1.25)  
Dev - Ref, Dynamic Range



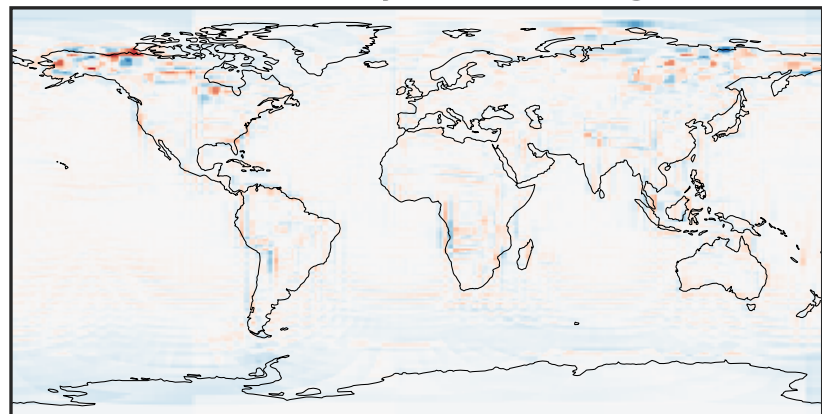
-6.33 -3.17 0.00 3.17 6.33  
ppb

Difference (1x1.25)  
Dev - Ref, Restricted Range [5%,95%]



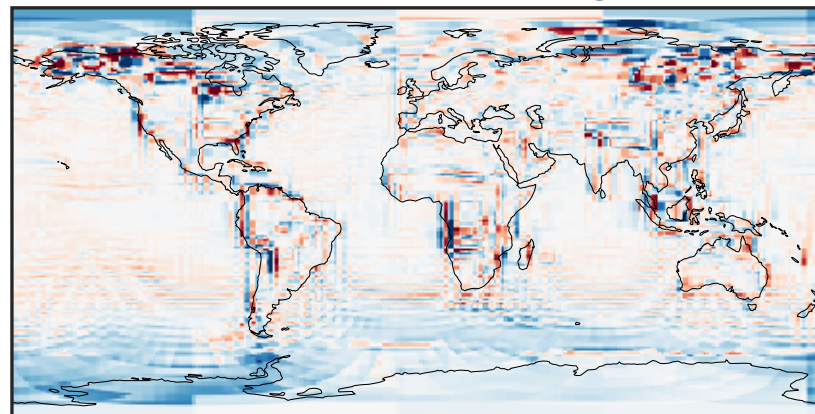
-0.1668 -0.0834 0.0000 0.0834 0.1668  
ppb

Ratio (1x1.25)  
Dev/Ref, Dynamic Range



1e-01 1 10  
unitless

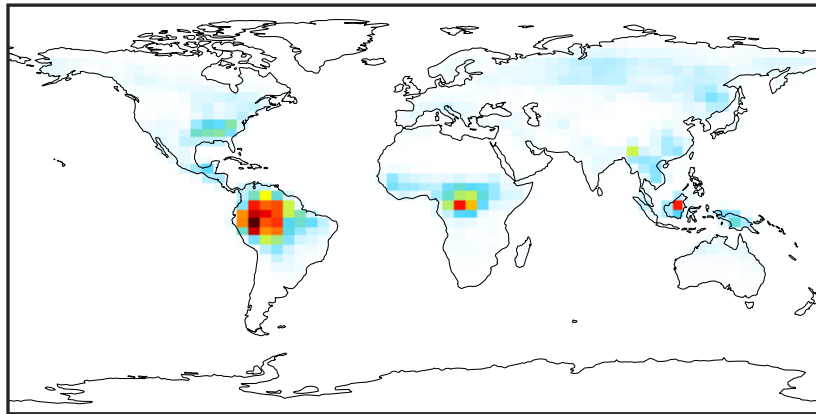
Ratio (1x1.25)  
Dev/Ref, Fixed Range



0.50 0.75 1.00 1.50 2.00  
unitless

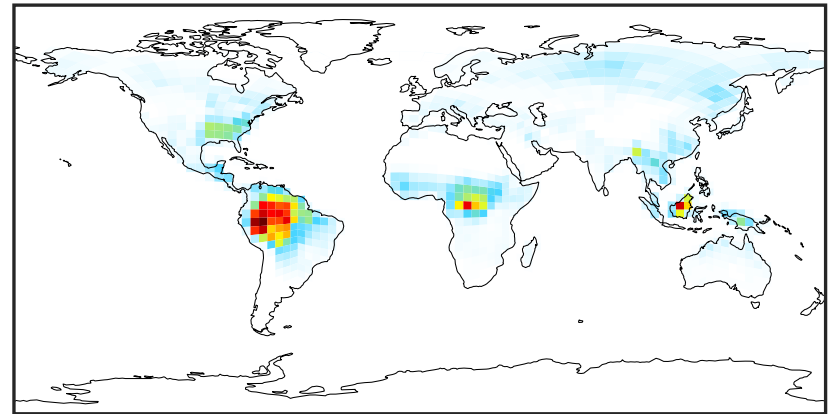
# SpeciesConcVV\_HPALDs (Jul2019)

14.3.0-rc.0 (Ref)  
4.0x5.0



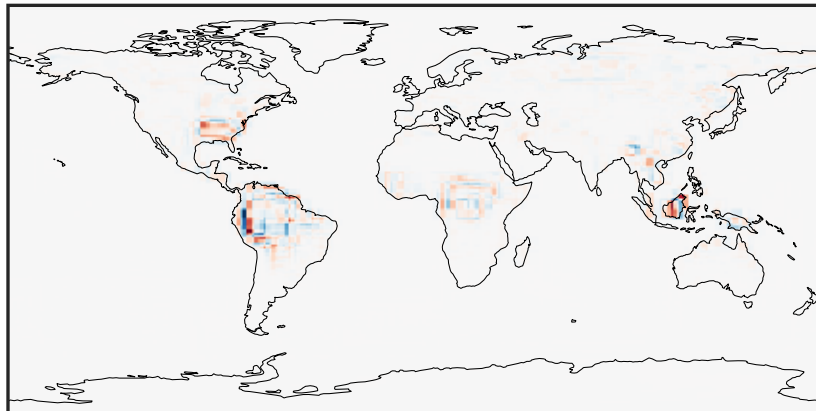
0.0000 0.0745 0.1490 0.2235 0.2980  
ppb

14.3.0-rc.0 (Dev)  
c24



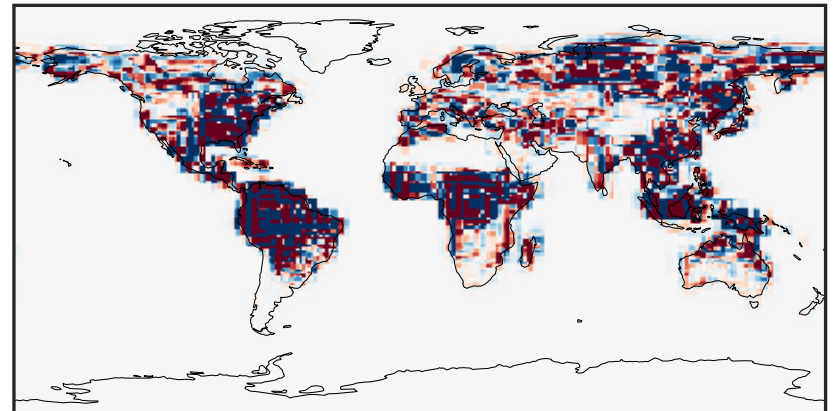
0.0000 0.0745 0.1490 0.2235 0.2980  
ppb

Difference (1x1.25)  
Dev - Ref, Dynamic Range



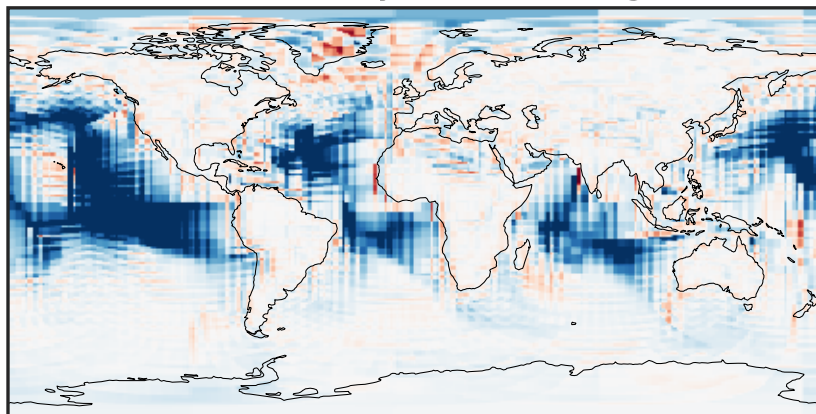
-0.1253 -0.0626 0.0000 0.0626 0.1253  
ppb

Difference (1x1.25)  
Dev - Ref, Restricted Range [5%,95%]



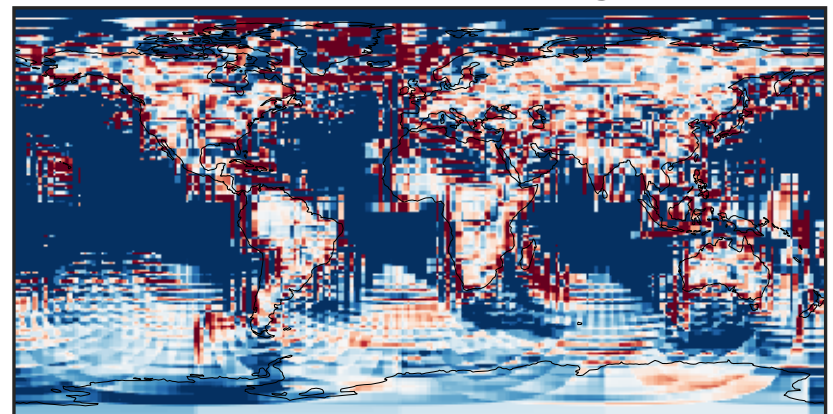
-0.0015 0.0000 0.0015  
ppb

Ratio (1x1.25)  
Dev/Ref, Dynamic Range



1e-02 1e-01 1 10 100  
unitless

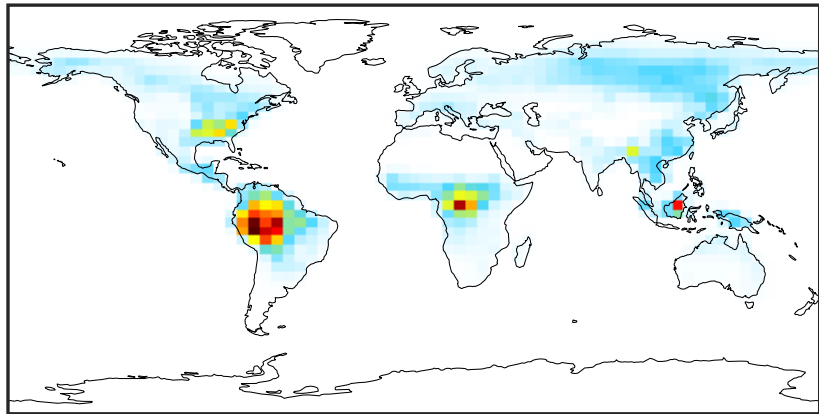
Ratio (1x1.25)  
Dev/Ref, Fixed Range



0.50 0.75 1.00 1.50 2.00  
unitless

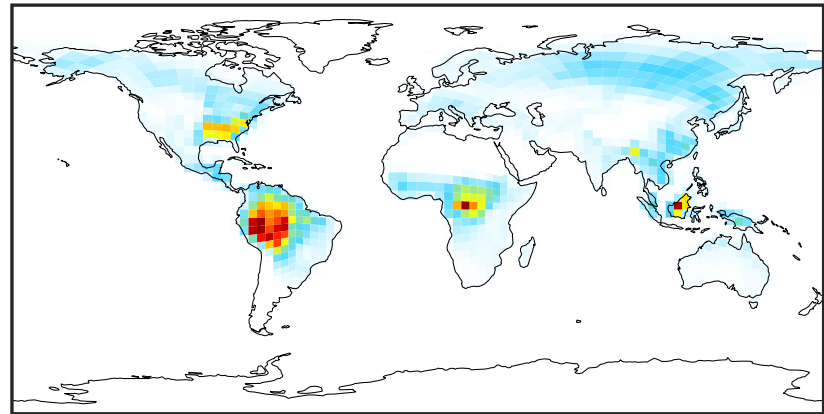
# SpeciesConcVV\_MACR (Jul2019)

14.3.0-rc.0 (Ref)  
4.0x5.0



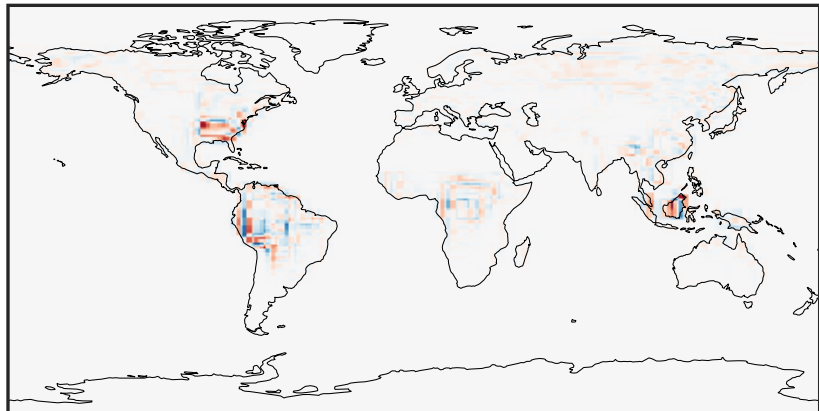
0.00 0.31 0.62 0.93 1.24  
ppb

14.3.0-rc.0 (Dev)  
c24



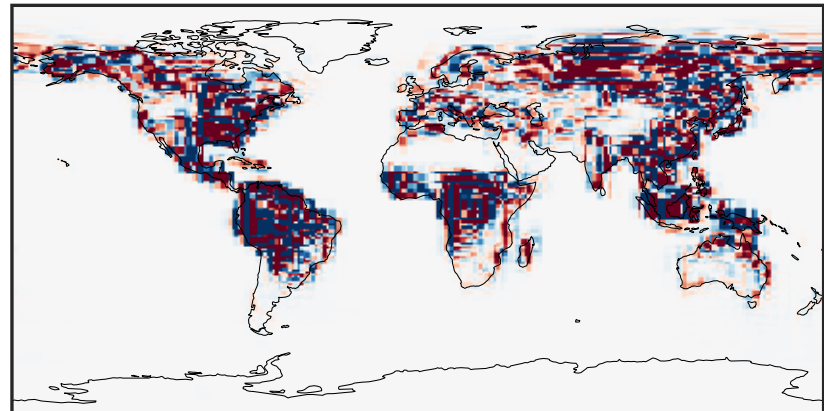
0.00 0.31 0.62 0.93 1.24  
ppb

Difference (1x1.25)  
Dev - Ref, Dynamic Range



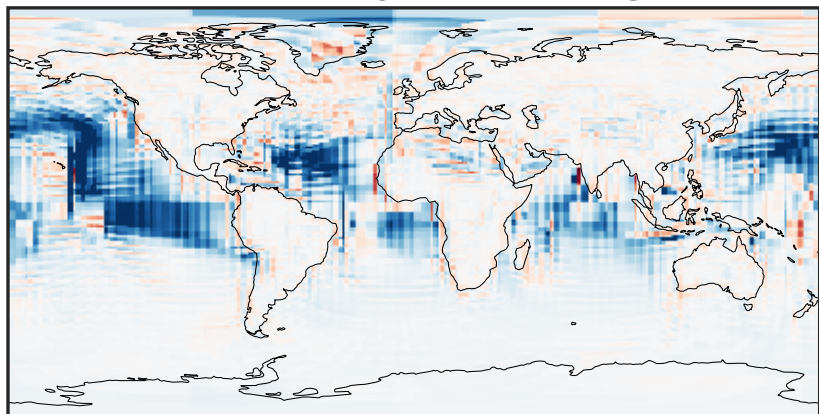
-0.521 -0.261 0.000 0.261 0.521  
ppb

Difference (1x1.25)  
Dev - Ref, Restricted Range [5%,95%]



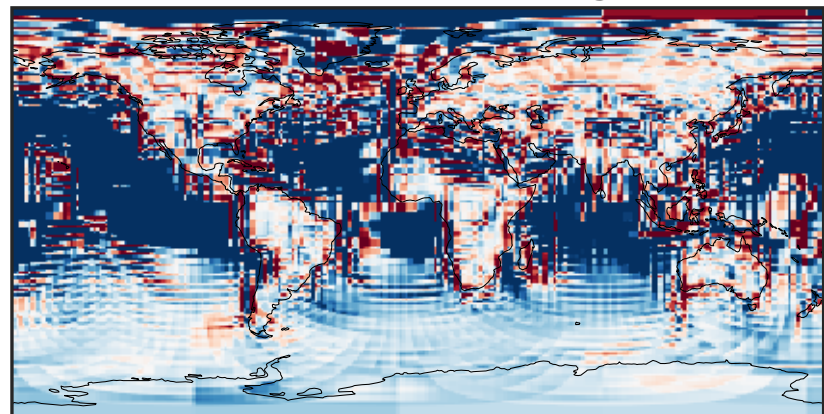
-0.01 0.00 0.01  
ppb

Ratio (1x1.25)  
Dev/Ref, Dynamic Range



1e-02 1e-01 1 10 100  
unitless

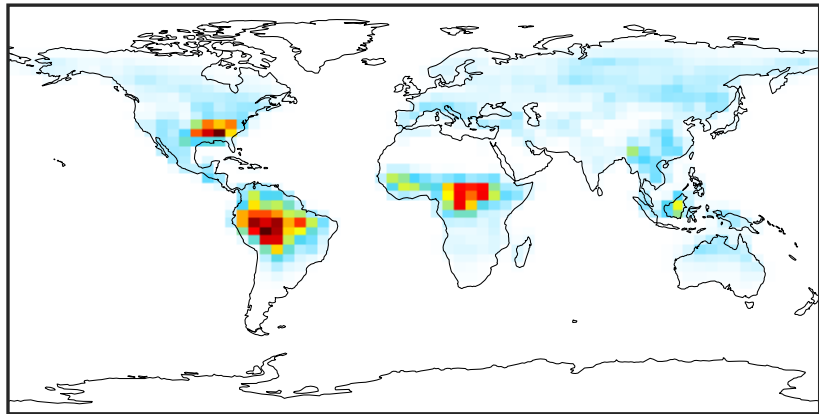
Ratio (1x1.25)  
Dev/Ref, Fixed Range



0.50 0.75 1.00 1.50 2.00  
unitless

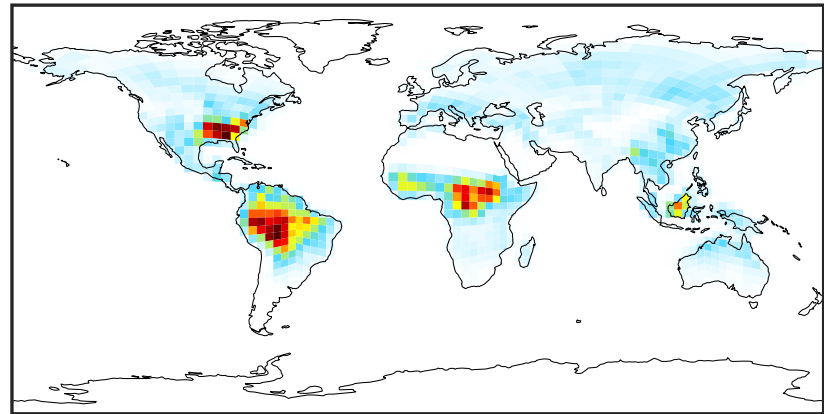
# SpeciesConcVV\_IEPOX (Jul2019)

14.3.0-rc.0 (Ref)  
4.0x5.0



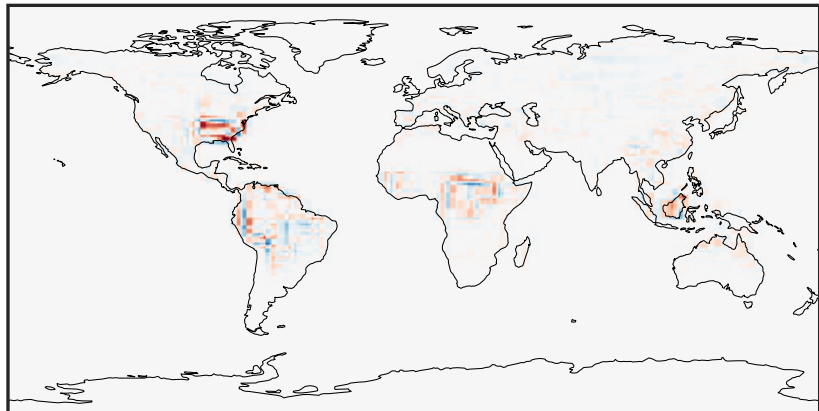
0.0000 0.2192 0.4384 0.6577 0.8769  
ppb

14.3.0-rc.0 (Dev)  
c24



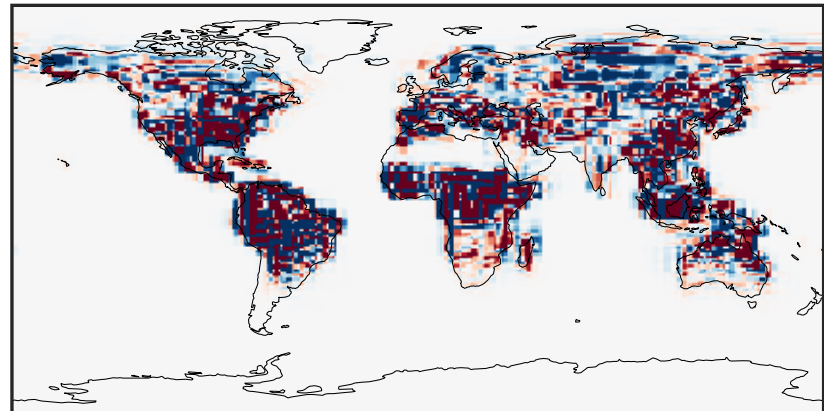
0.0000 0.2192 0.4384 0.6577 0.8769  
ppb

Difference (1x1.25)  
Dev - Ref, Dynamic Range



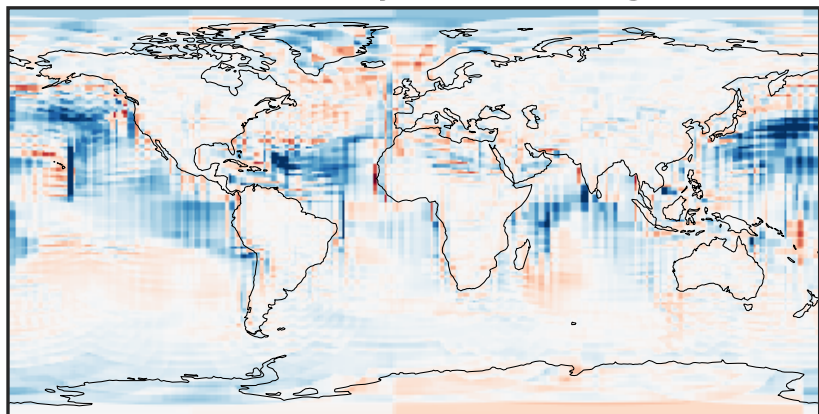
-0.4509 -0.2255 0.0000 0.2255 0.4509  
ppb

Difference (1x1.25)  
Dev - Ref, Restricted Range [5%,95%]



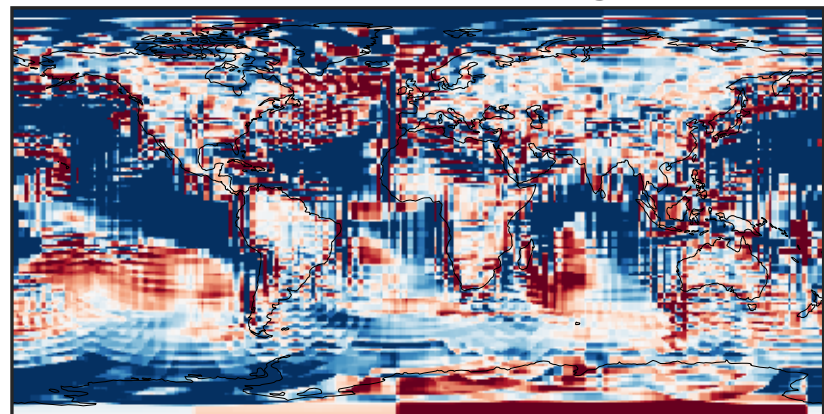
-0.008 0.000 0.008  
ppb

Ratio (1x1.25)  
Dev/Ref, Dynamic Range



1e-02 1e-01 1 10 100  
unitless

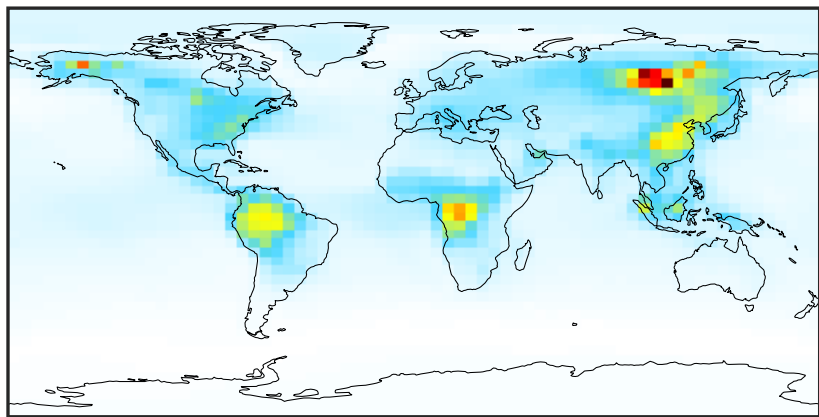
Ratio (1x1.25)  
Dev/Ref, Fixed Range



0.50 0.75 1.00 1.50 2.00  
unitless

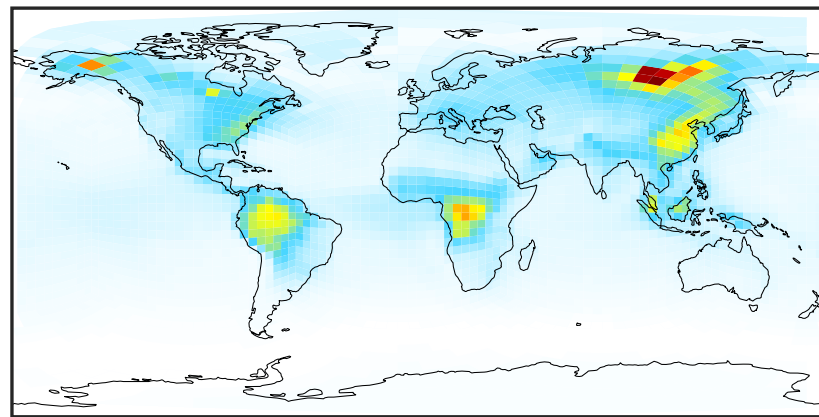
# SpeciesConcVV\_ACET (Jul2019)

14.3.0-rc.0 (Ref)  
4.0x5.0



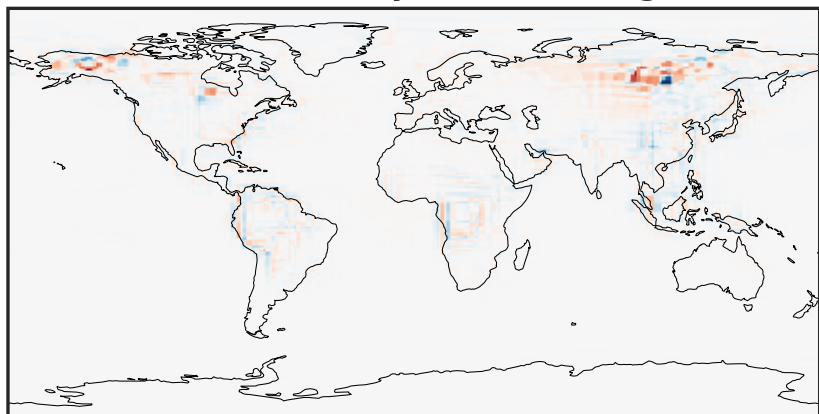
0.14 2.70 5.26 7.82 10.38  
ppb

14.3.0-rc.0 (Dev)  
c24



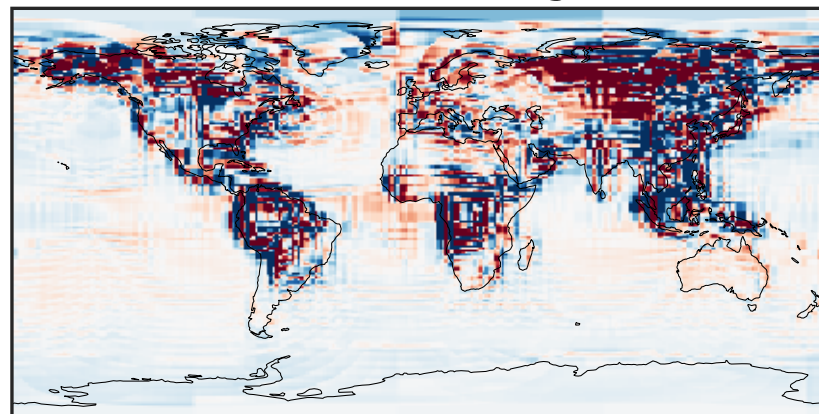
0.14 2.70 5.26 7.82 10.38  
ppb

Difference (1x1.25)  
Dev - Ref, Dynamic Range



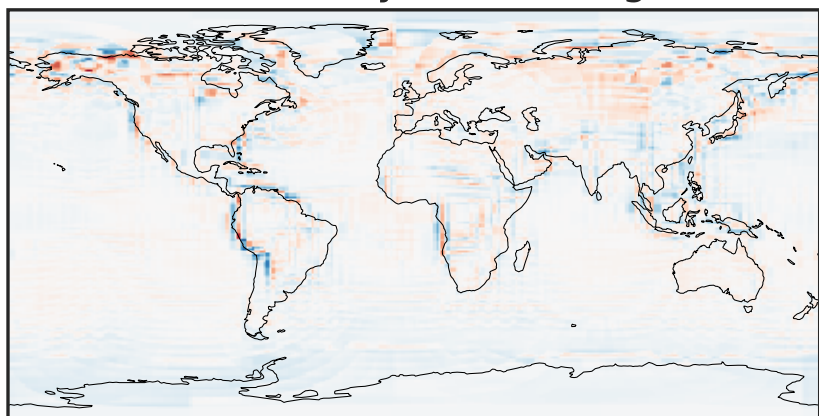
-4.690 -2.345 0.000 2.345 4.690  
ppb

Difference (1x1.25)  
Dev - Ref, Restricted Range [5%,95%]



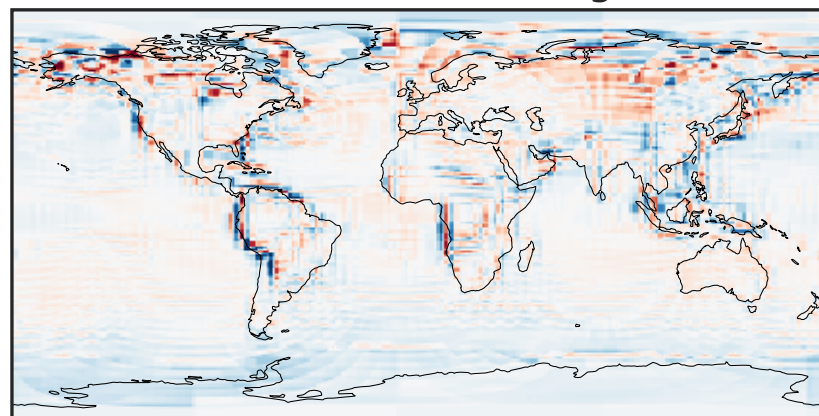
-0.2 -0.1 0.0 0.1 0.2  
ppb

Ratio (1x1.25)  
Dev/Ref, Dynamic Range



0.260 0.630 1.000 2.424 3.849  
unitless

Ratio (1x1.25)  
Dev/Ref, Fixed Range

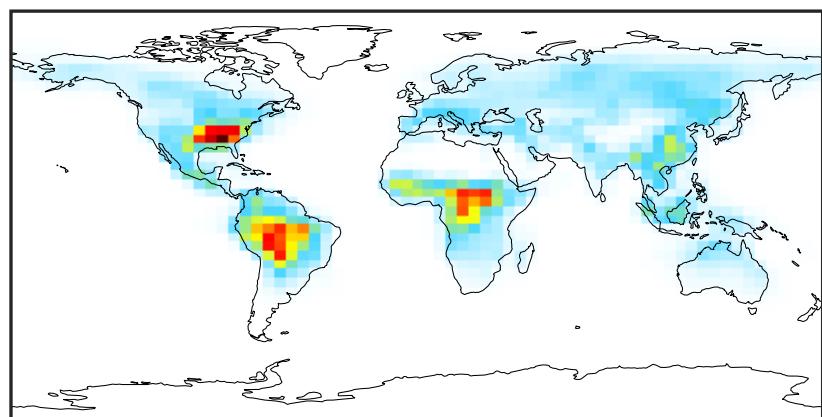


0.50 0.75 1.00 1.50 2.00  
unitless



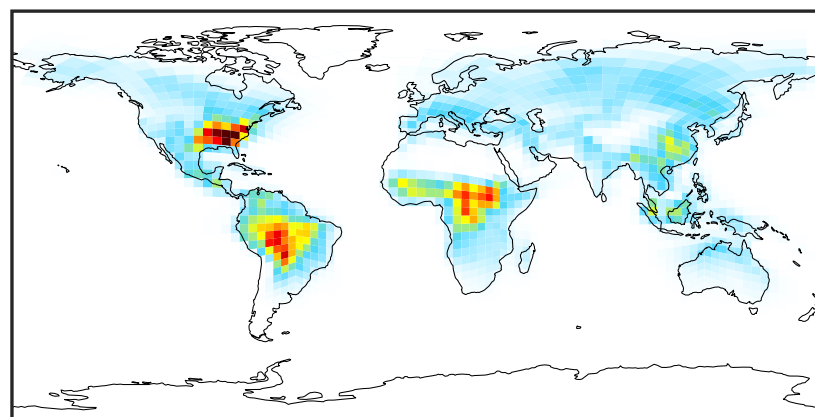
# SpeciesConcVV\_HAC (Jul2019)

14.3.0-rc.0 (Ref)  
4.0x5.0



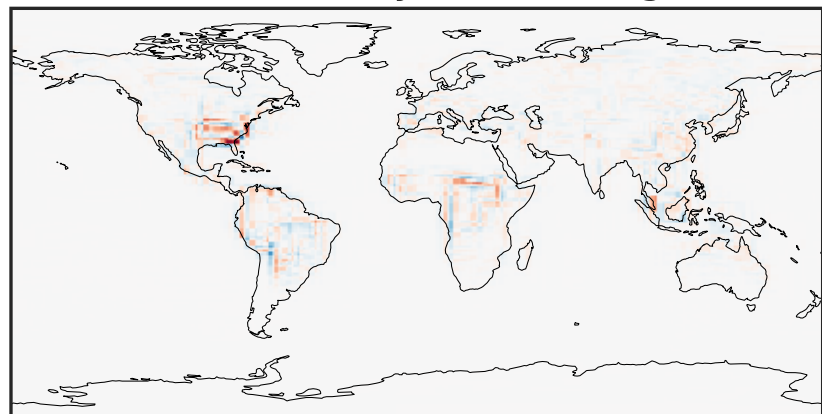
0.0000 0.1983 0.3966 0.5949 0.7932  
ppb

14.3.0-rc.0 (Dev)  
c24



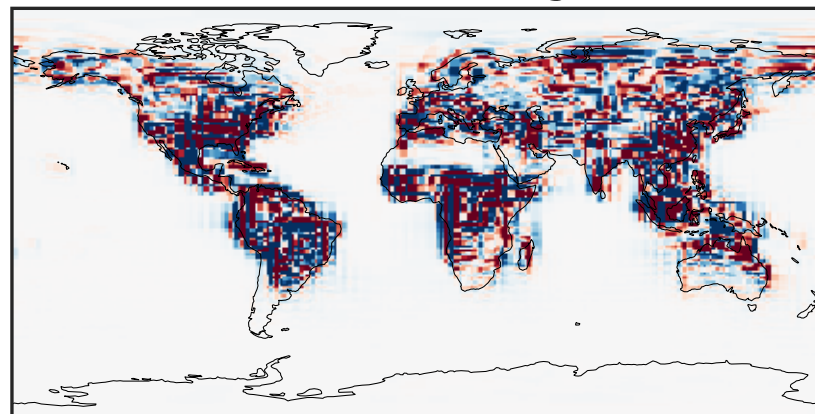
0.0000 0.1983 0.3966 0.5949 0.7932  
ppb

Difference (1x1.25)  
Dev - Ref, Dynamic Range



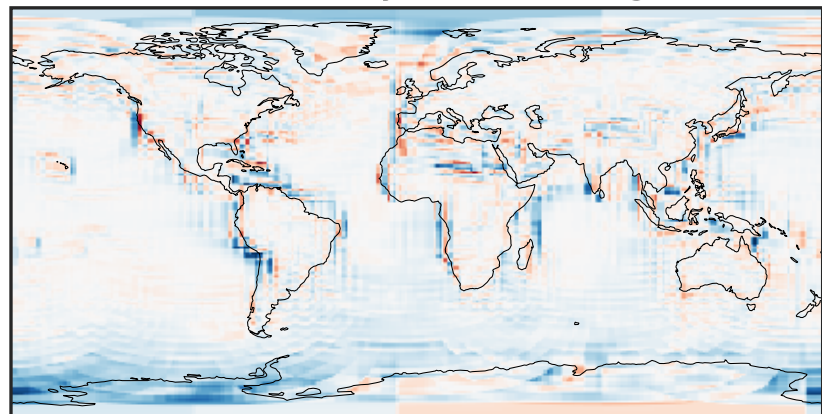
-0.4132 -0.2066 0.0000 0.2066 0.4132  
ppb

Difference (1x1.25)  
Dev - Ref, Restricted Range [5%,95%]



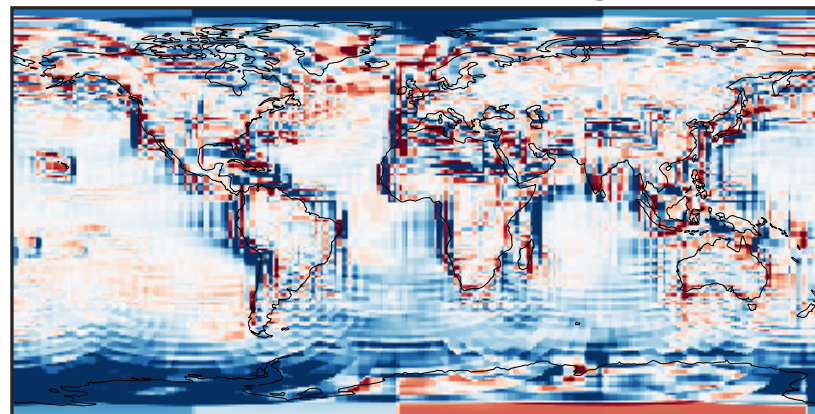
-0.008 0.000 0.008  
ppb

Ratio (1x1.25)  
Dev/Ref, Dynamic Range



1e-01 1 10  
unitless

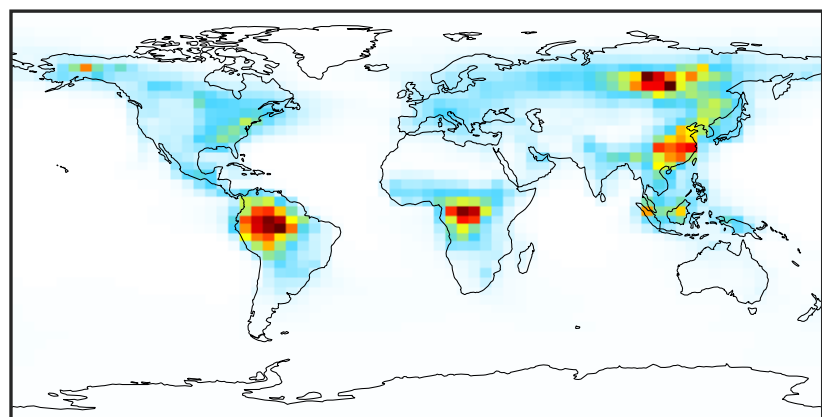
Ratio (1x1.25)  
Dev/Ref, Fixed Range



0.50 0.75 1.00 1.50 2.00  
unitless

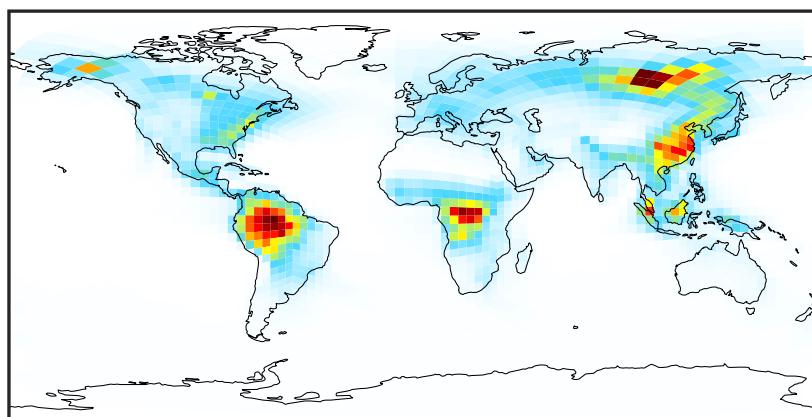
# SpeciesConcVV\_MEK (Jul2019)

14.3.0-rc.0 (Ref)  
4.0x5.0



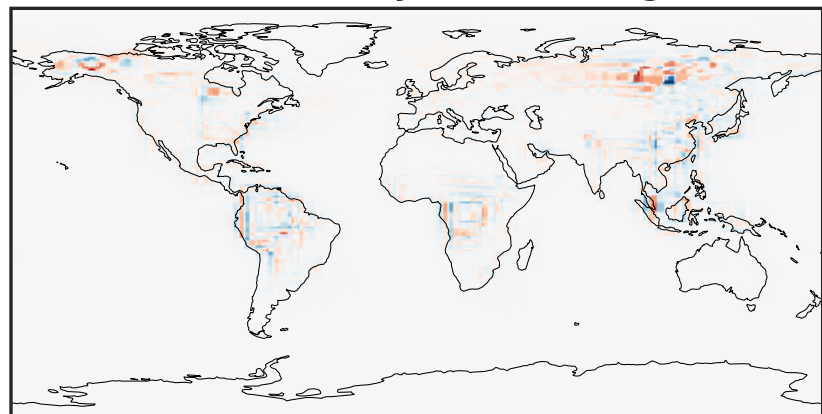
0.000 0.515 1.031 1.546 2.061  
ppb

14.3.0-rc.0 (Dev)  
c24



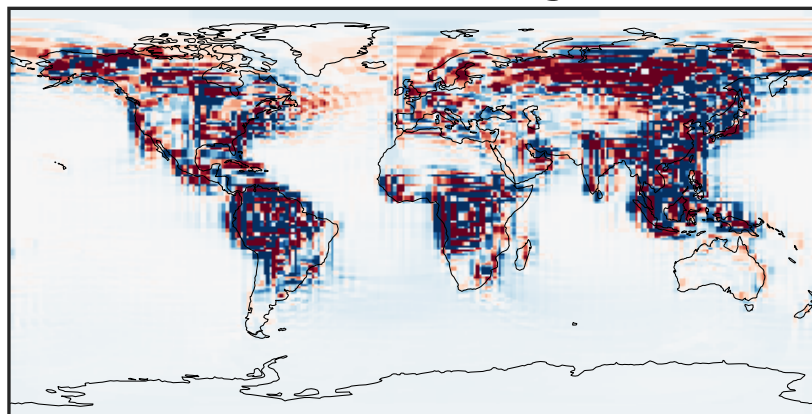
0.000 0.515 1.031 1.546 2.061  
ppb

Difference (1x1.25)  
Dev - Ref, Dynamic Range



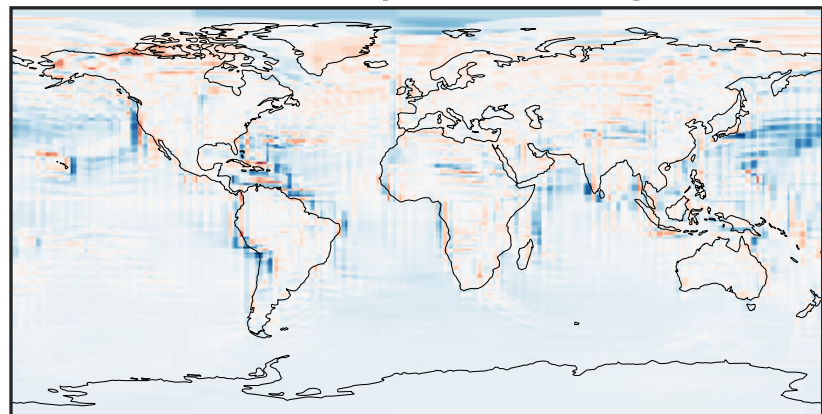
-1.013 -0.506 0.000 0.506 1.013  
ppb

Difference (1x1.25)  
Dev - Ref, Restricted Range [5%,95%]



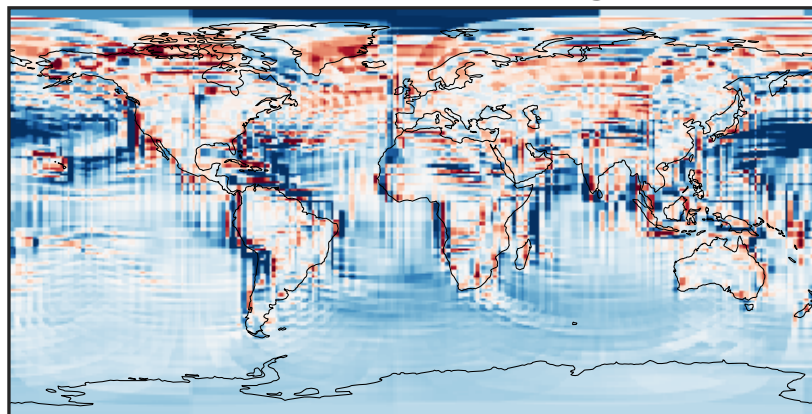
-0.050 -0.025 0.000 0.025 0.050  
ppb

Ratio (1x1.25)  
Dev/Ref, Dynamic Range



1e-01 1 10  
unitless

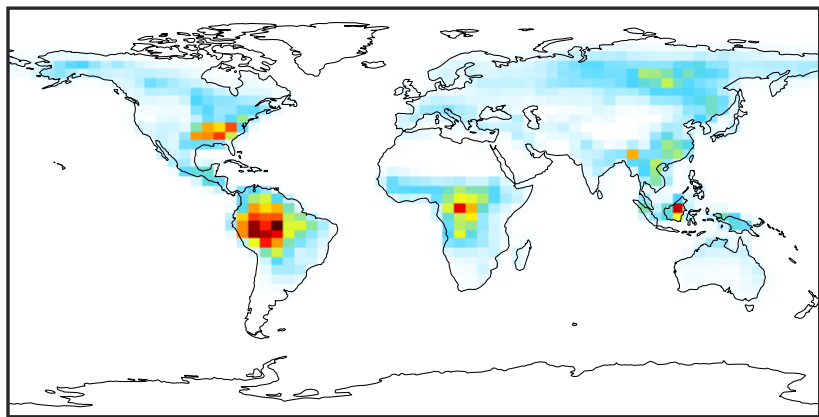
Ratio (1x1.25)  
Dev/Ref, Fixed Range



0.50 0.75 1.00 1.50 2.00  
unitless

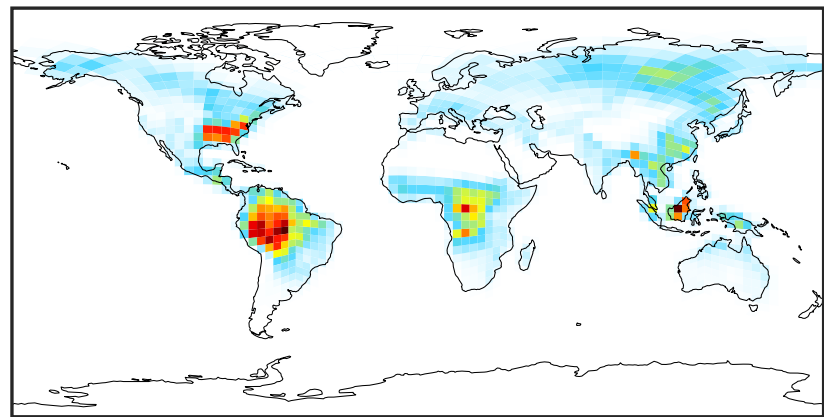
# SpeciesConcVV\_MVK (Jul2019)

14.3.0-rc.0 (Ref)  
4.0x5.0



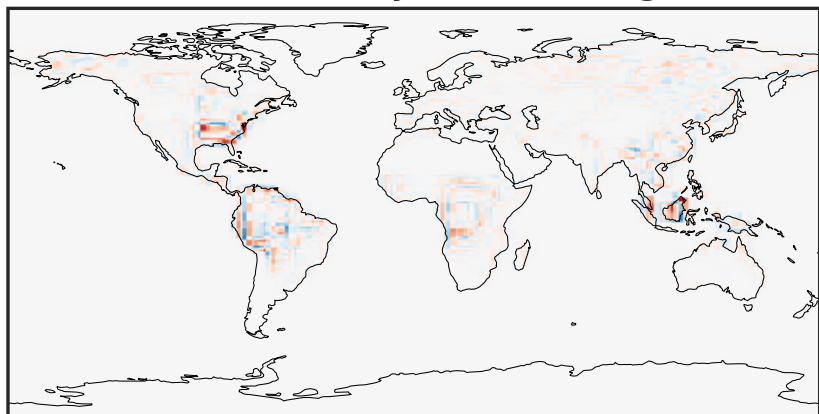
0.000 0.445 0.891 1.336 1.782  
ppb

14.3.0-rc.0 (Dev)  
c24



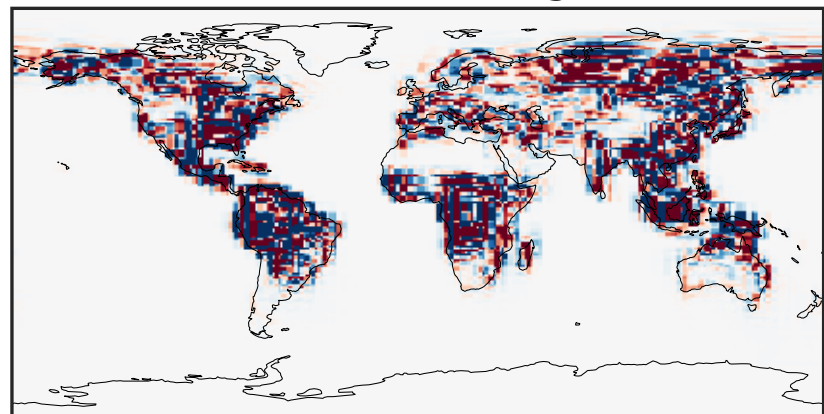
0.000 0.445 0.891 1.336 1.782  
ppb

Difference (1x1.25)  
Dev - Ref, Dynamic Range



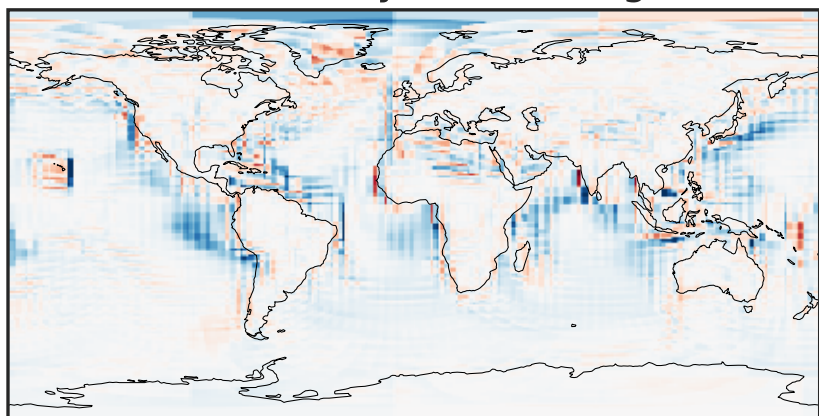
-0.922 -0.461 0.000 0.461 0.922  
ppb

Difference (1x1.25)  
Dev - Ref, Restricted Range [5%,95%]



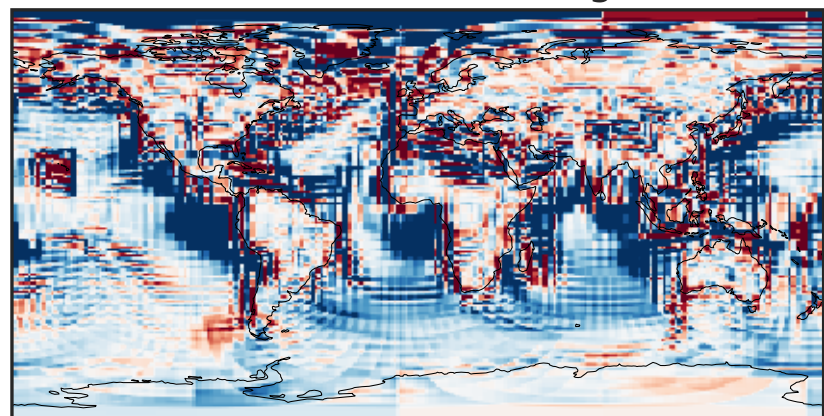
-0.02 0.00 0.02  
ppb

Ratio (1x1.25)  
Dev/Ref, Dynamic Range



1e-02 1e-01 1 10 100  
unitless

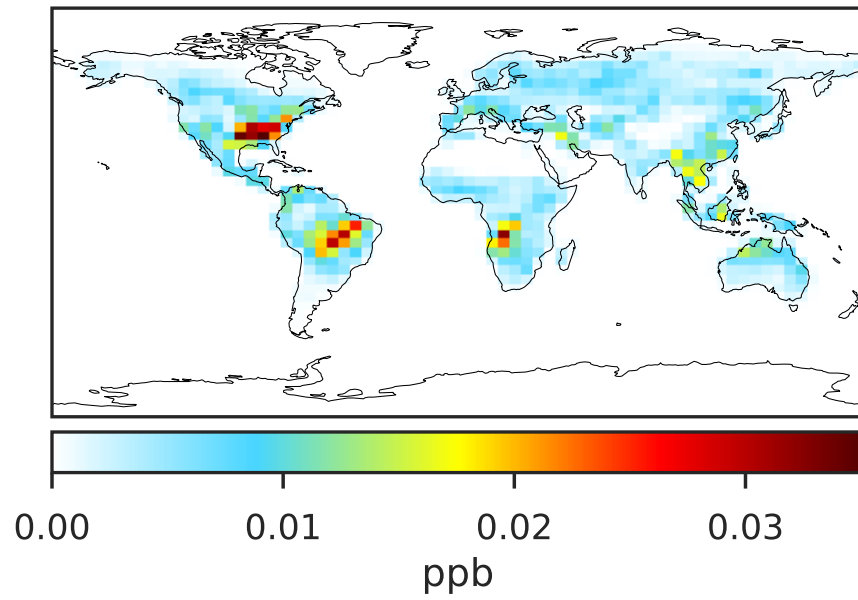
Ratio (1x1.25)  
Dev/Ref, Fixed Range



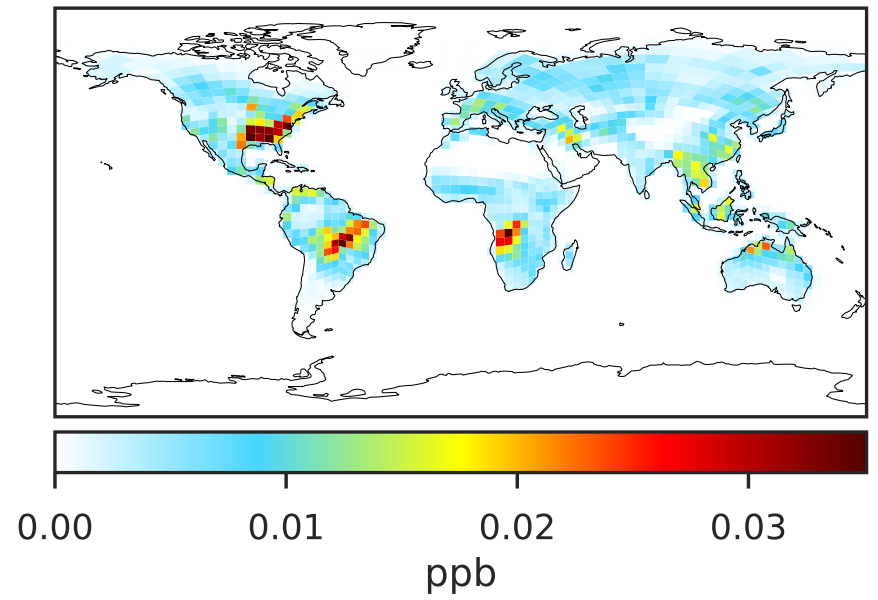
0.50 0.75 1.00 1.50 2.00  
unitless

# SpeciesConcVV\_ISOPN (Jul2019)

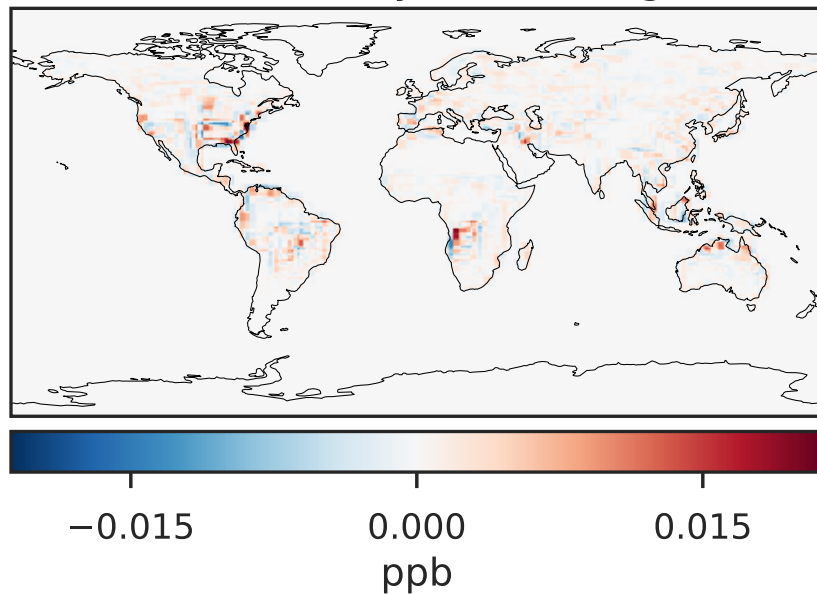
14.3.0-rc.0 (Ref)  
4.0x5.0



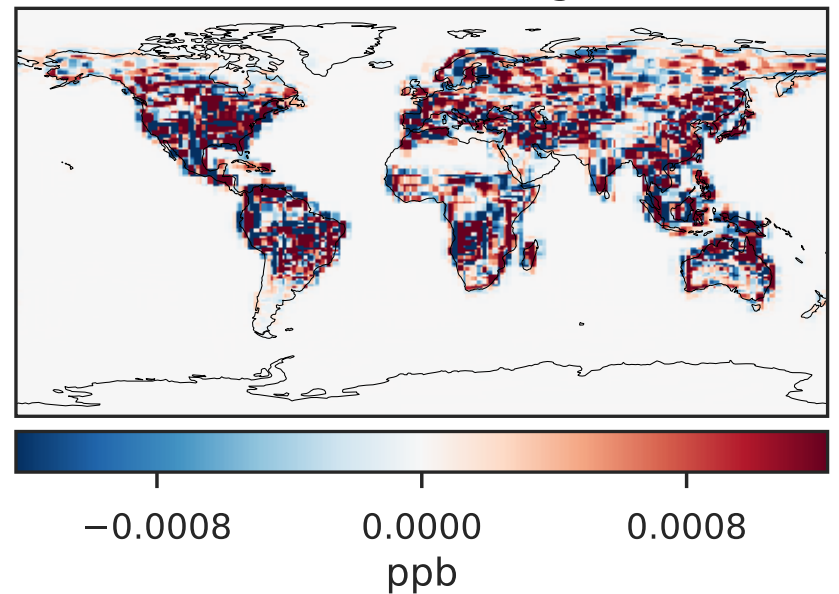
14.3.0-rc.0 (Dev)  
c24



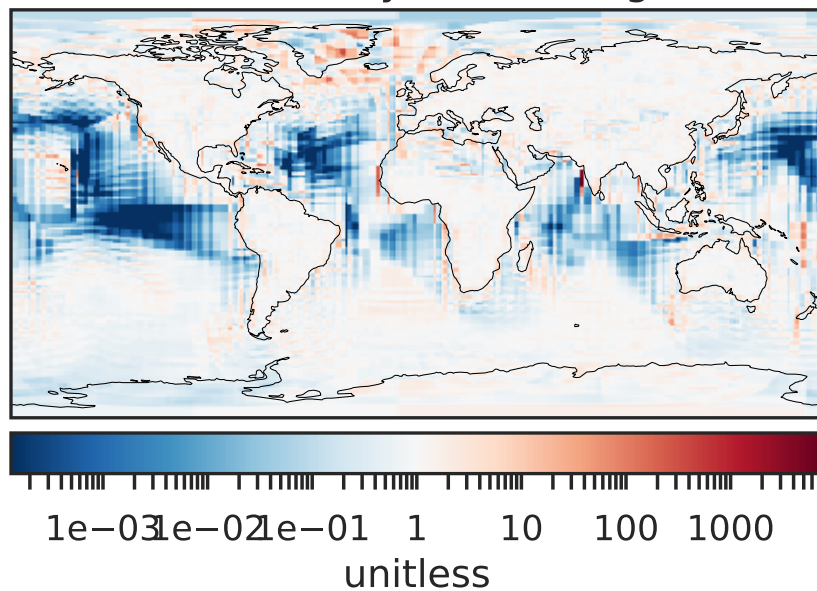
Difference (1x1.25)  
Dev - Ref, Dynamic Range



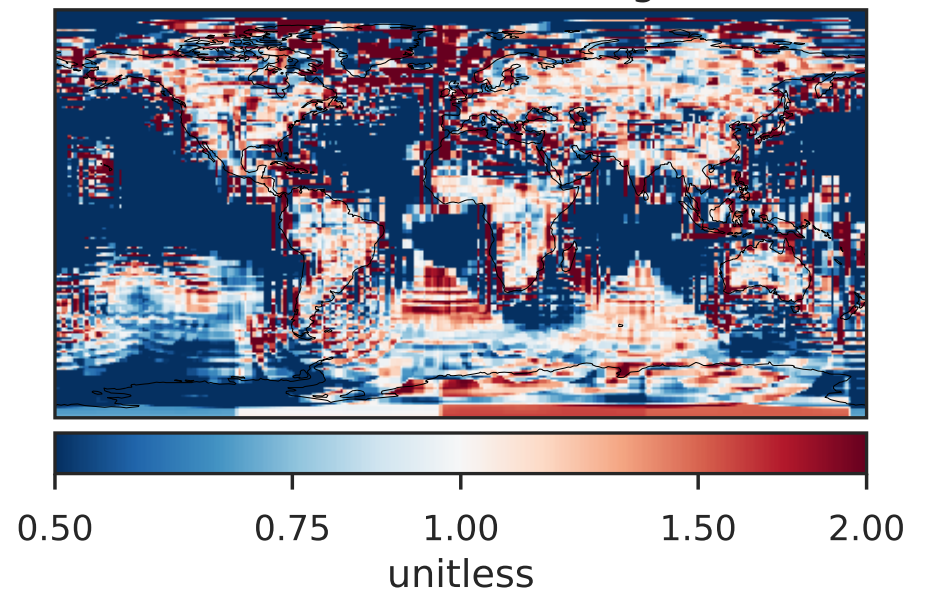
Difference (1x1.25)  
Dev - Ref, Restricted Range [5%,95%]



Ratio (1x1.25)  
Dev/Ref, Dynamic Range

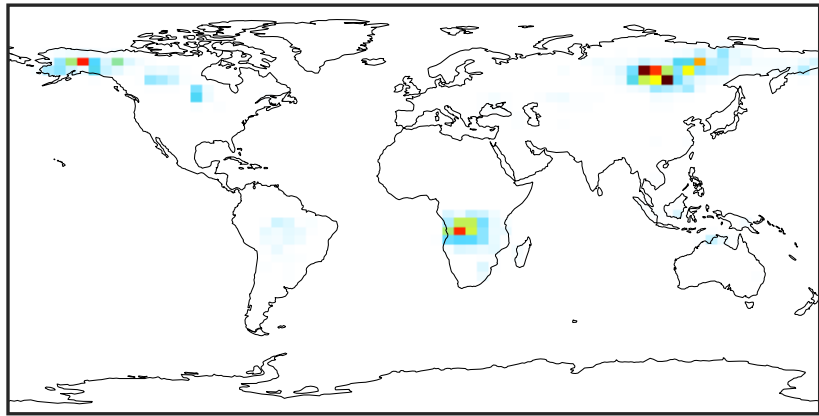


Ratio (1x1.25)  
Dev/Ref, Fixed Range



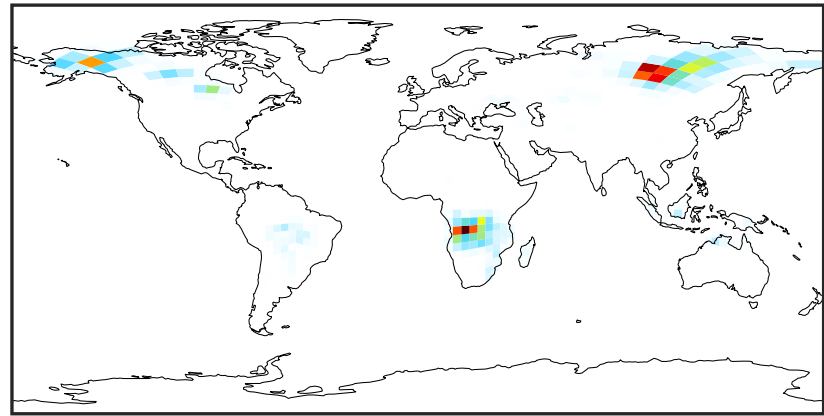
# SpeciesConcVV\_FURA (Jul2019)

14.3.0-rc.0 (Ref)  
4.0x5.0



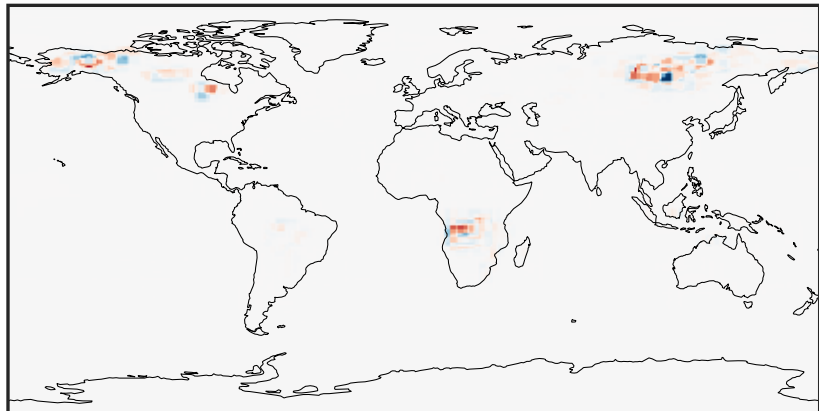
0.000 0.478 0.957 1.435 1.914  
ppb

14.3.0-rc.0 (Dev)  
c24



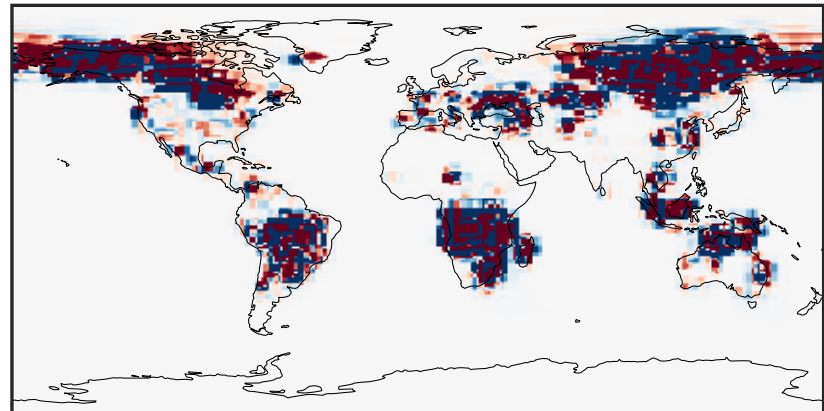
0.000 0.478 0.957 1.435 1.914  
ppb

Difference (1x1.25)  
Dev - Ref, Dynamic Range



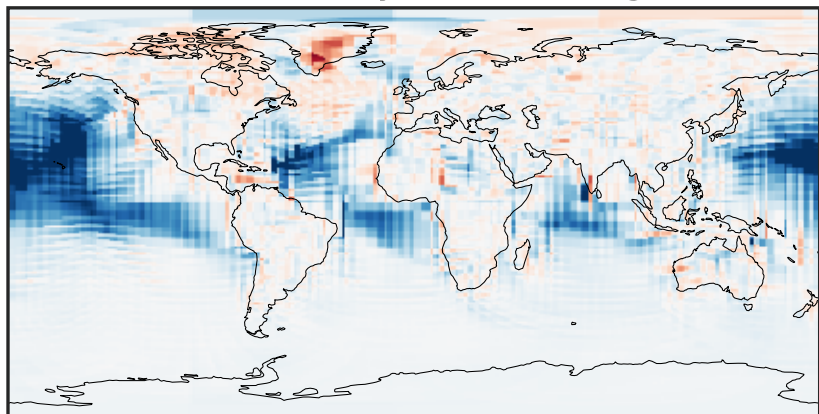
-1.324 -0.662 0.000 0.662 1.324  
ppb

Difference (1x1.25)  
Dev - Ref, Restricted Range [5%,95%]



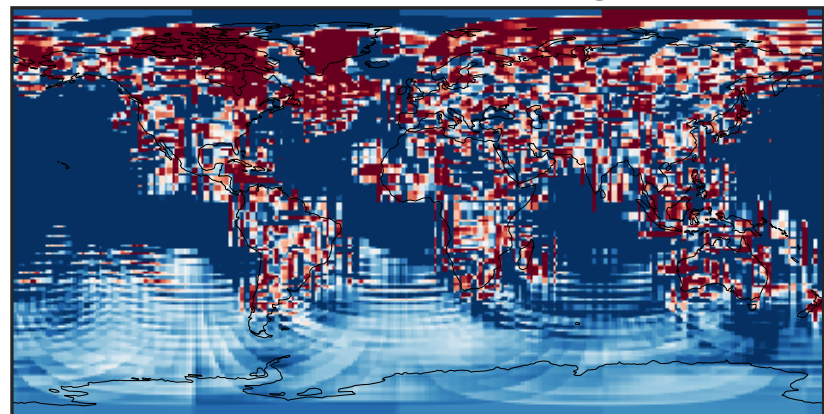
-0.0015 0.0000 0.0015  
ppb

Ratio (1x1.25)  
Dev/Ref, Dynamic Range



unitless

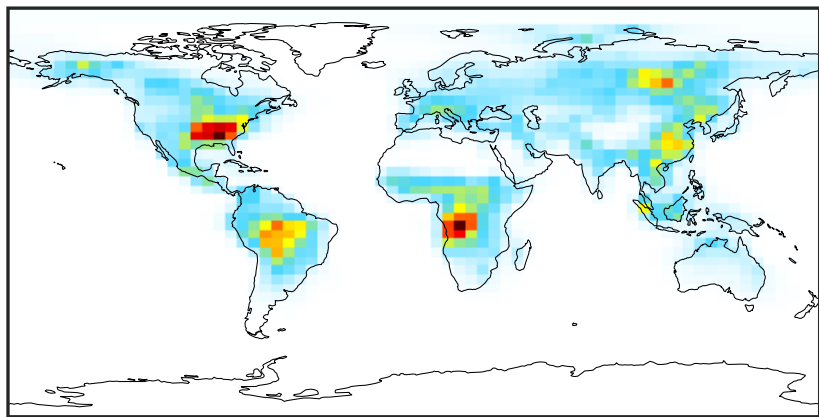
Ratio (1x1.25)  
Dev/Ref, Fixed Range



0.50 0.75 1.00 1.50 2.00  
unitless

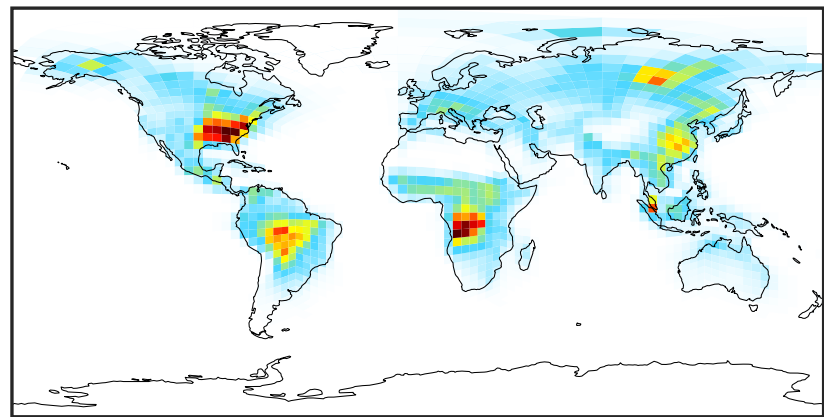
# SpeciesConcVV\_GLYC (Jul2019)

14.3.0-rc.0 (Ref)  
4.0x5.0



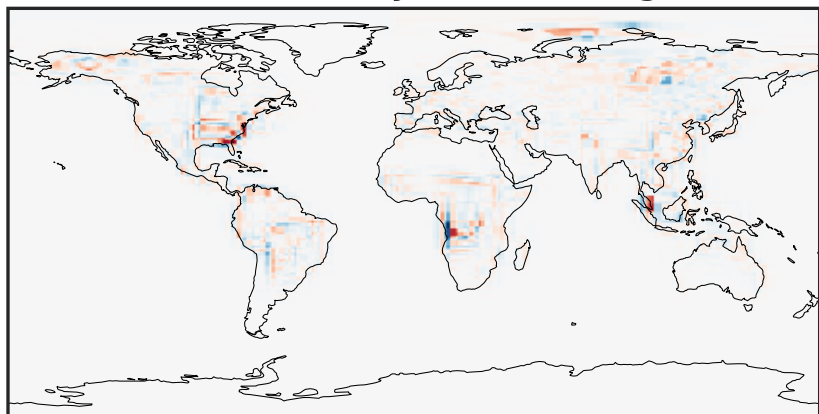
0.0000 0.2347 0.4694 0.7041 0.9388  
ppb

14.3.0-rc.0 (Dev)  
c24



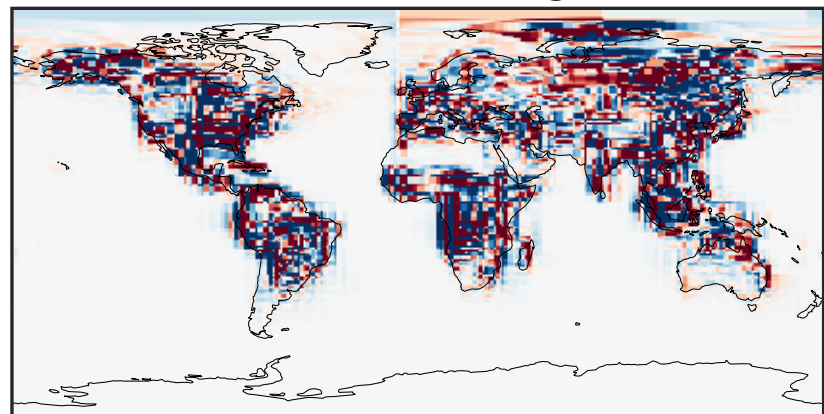
0.0000 0.2347 0.4694 0.7041 0.9388  
ppb

Difference (1x1.25)  
Dev - Ref, Dynamic Range



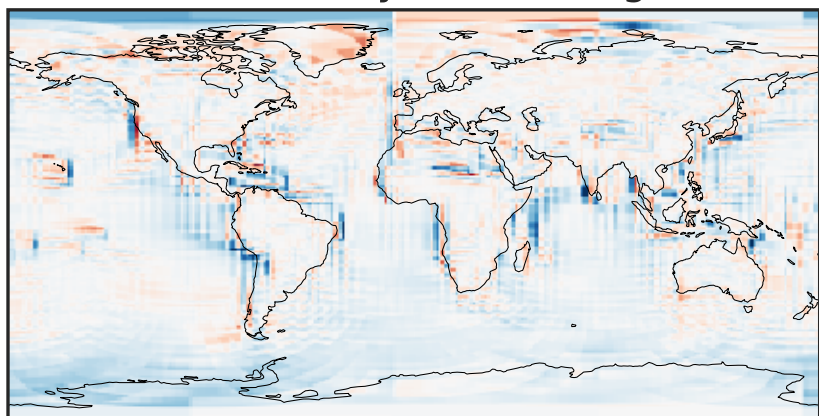
-0.4396 -0.2198 0.0000 0.2198 0.4396  
ppb

Difference (1x1.25)  
Dev - Ref, Restricted Range [5%,95%]



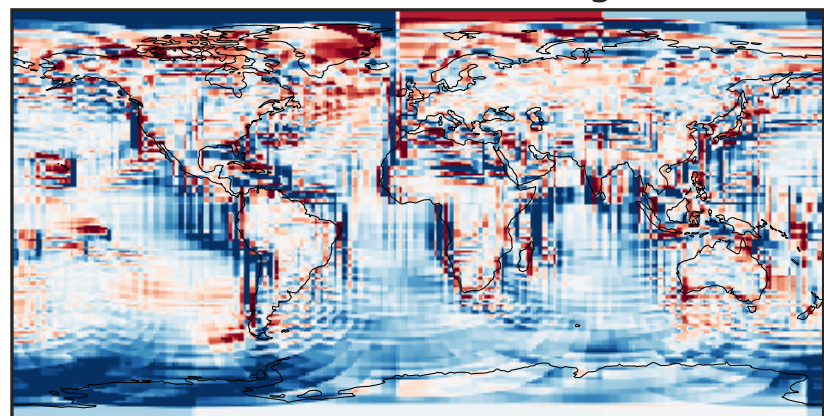
-0.015 0.000 0.015  
ppb

Ratio (1x1.25)  
Dev/Ref, Dynamic Range



1e-01 1 10  
unitless

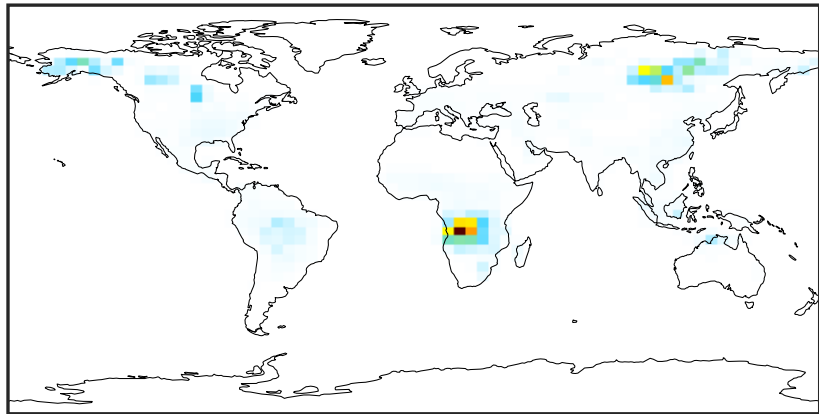
Ratio (1x1.25)  
Dev/Ref, Fixed Range



0.50 0.75 1.00 1.50 2.00  
unitless

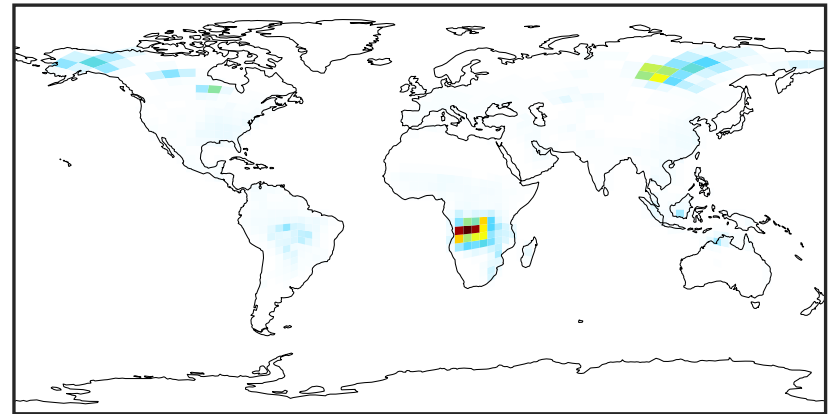
# SpeciesConcVV\_GLYX (Jul2019)

14.3.0-rc.0 (Ref)  
4.0x5.0



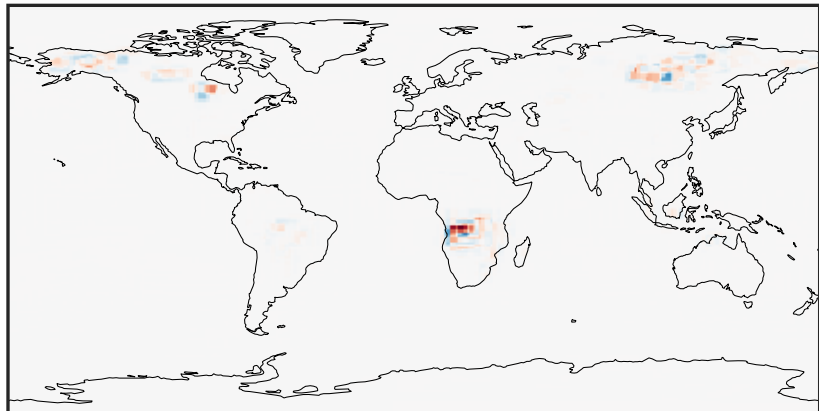
0.000 0.295 0.590 0.886 1.181  
ppb

14.3.0-rc.0 (Dev)  
c24



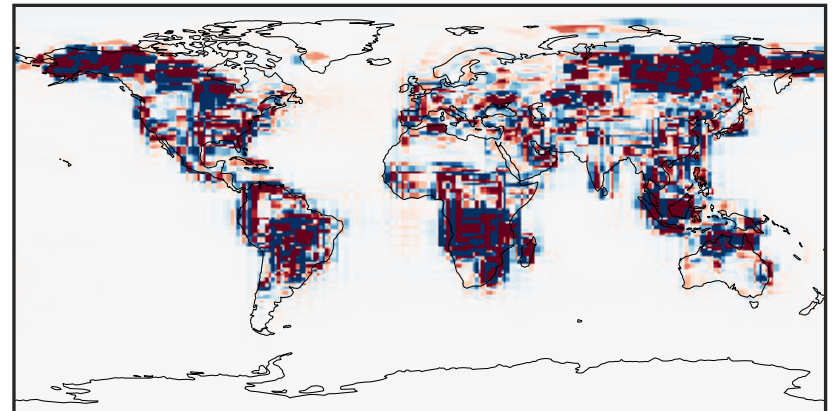
0.000 0.295 0.590 0.886 1.181  
ppb

Difference (1x1.25)  
Dev - Ref, Dynamic Range



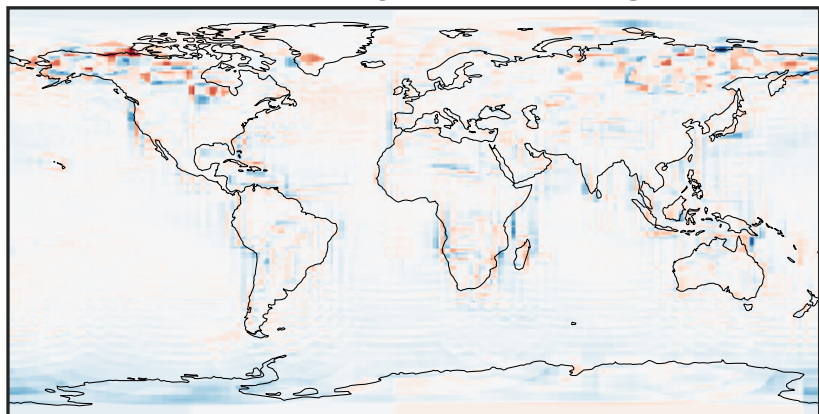
-0.765 -0.383 0.000 0.383 0.765  
ppb

Difference (1x1.25)  
Dev - Ref, Restricted Range [5%,95%]



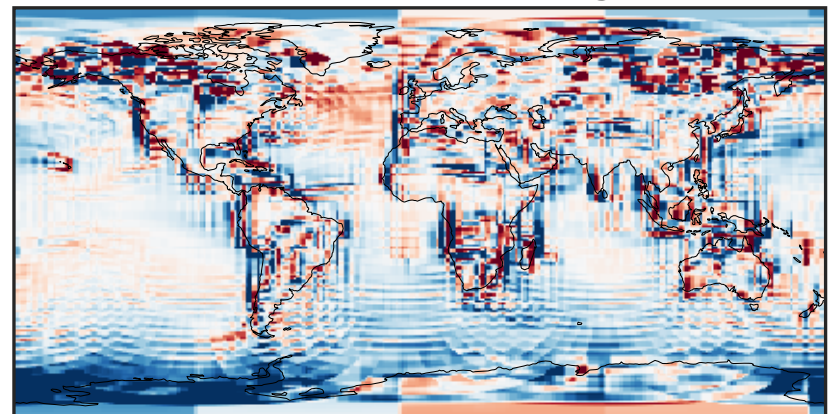
-0.0015 0.0000 0.0015  
ppb

Ratio (1x1.25)  
Dev/Ref, Dynamic Range



1e-01 1 10  
unitless

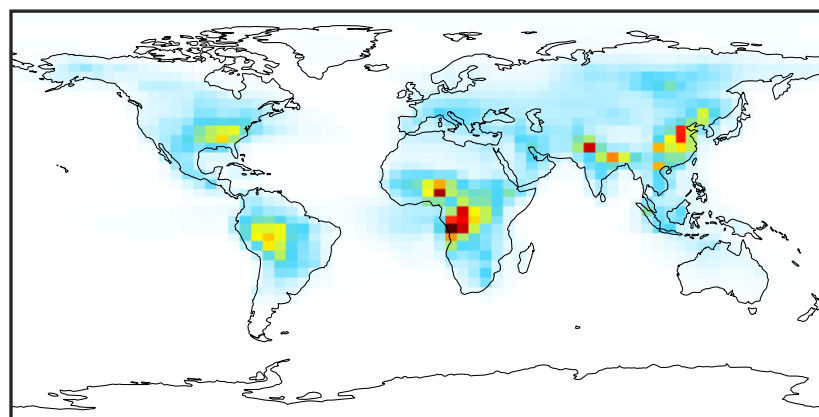
Ratio (1x1.25)  
Dev/Ref, Fixed Range



0.50 0.75 1.00 1.50 2.00  
unitless

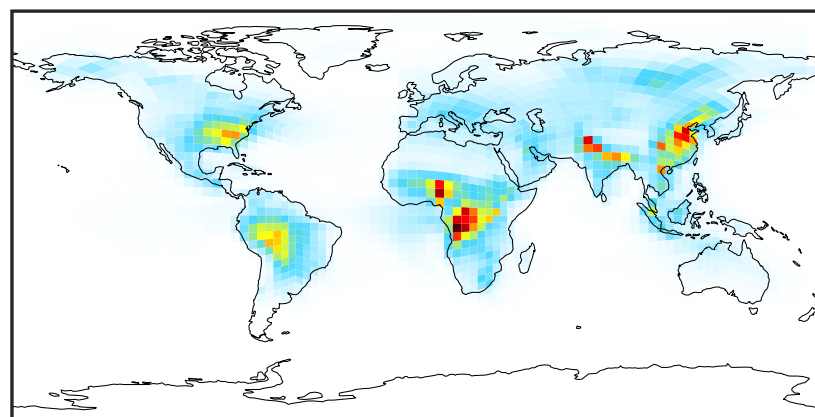
# SpeciesConcVV\_HCOOH (Jul2019)

14.3.0-rc.0 (Ref)  
4.0x5.0



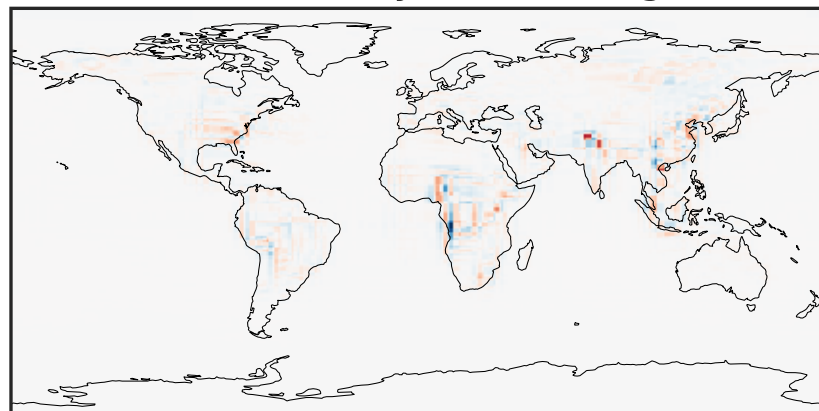
0.001 0.628 1.255 1.883 2.510  
ppb

14.3.0-rc.0 (Dev)  
c24



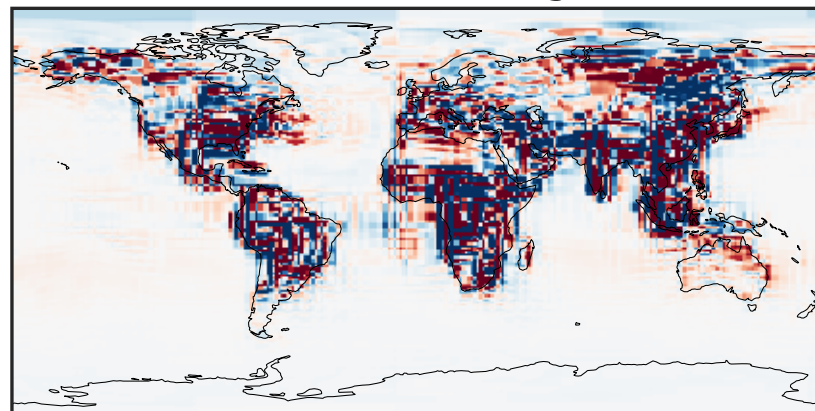
0.001 0.628 1.255 1.883 2.510  
ppb

Difference (1x1.25)  
Dev - Ref, Dynamic Range



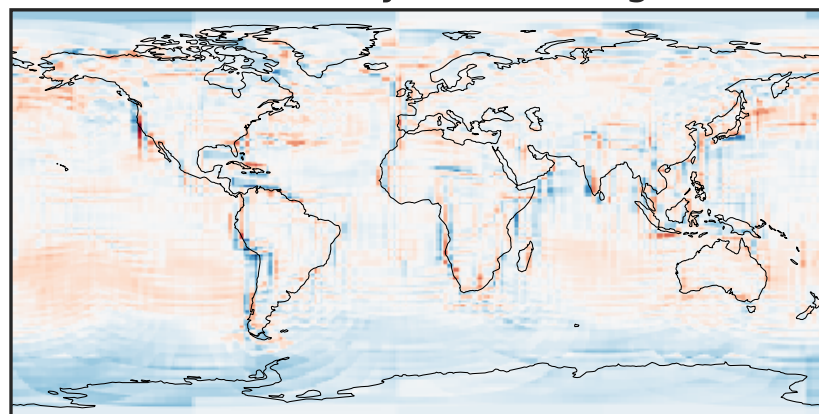
-1.384 -0.692 0.000 0.692 1.384  
ppb

Difference (1x1.25)  
Dev - Ref, Restricted Range [5%,95%]



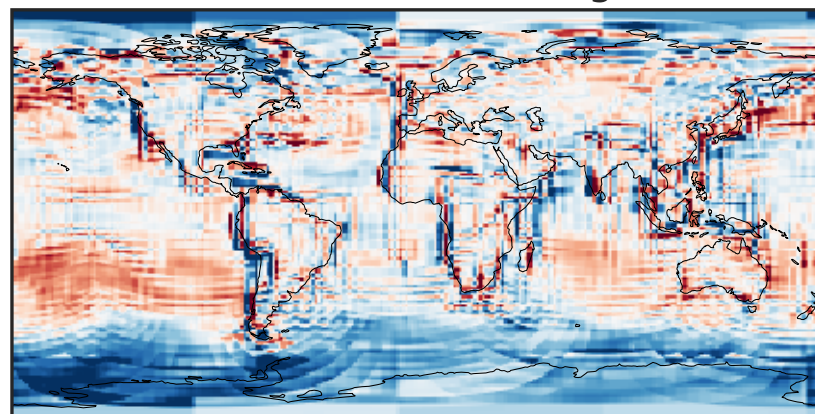
-0.025 0.000 0.025  
ppb

Ratio (1x1.25)  
Dev/Ref, Dynamic Range



0.123 0.562 1.000 4.557 8.113  
unitless

Ratio (1x1.25)  
Dev/Ref, Fixed Range

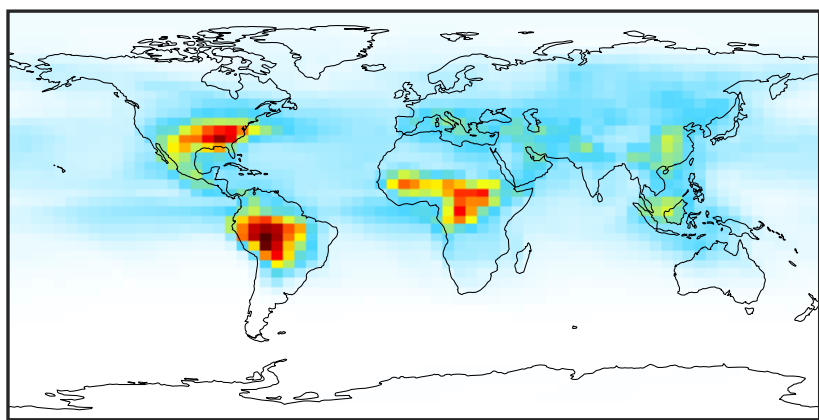


0.50 0.75 1.00 1.50 2.00  
unitless



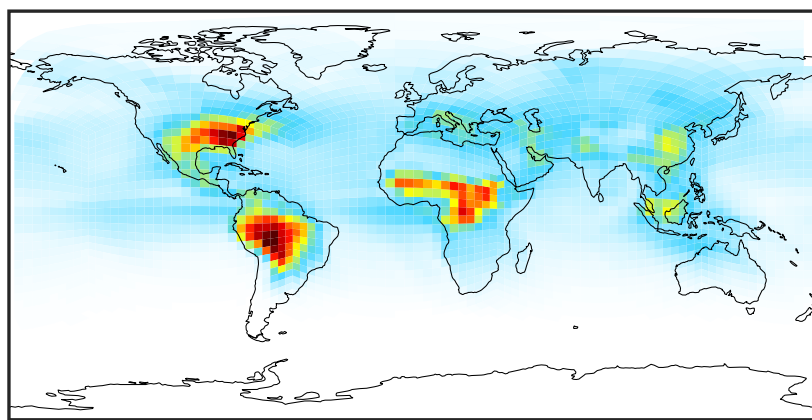
# SpeciesConcVV\_MAP (Jul2019)

14.3.0-rc.0 (Ref)  
4.0x5.0



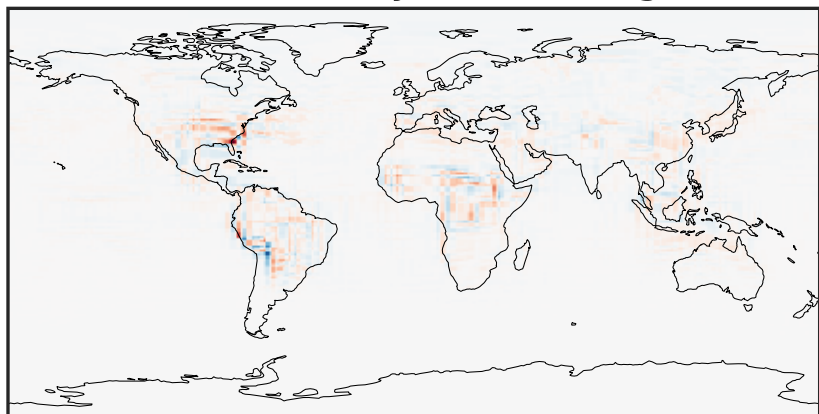
0.0015 0.2067 0.4120 0.6172 0.8224  
ppb

14.3.0-rc.0 (Dev)  
c24



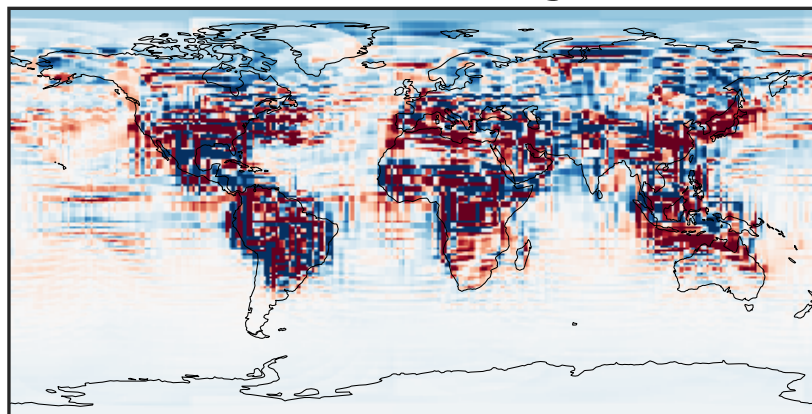
0.0015 0.2067 0.4120 0.6172 0.8224  
ppb

Difference (1x1.25)  
Dev - Ref, Dynamic Range



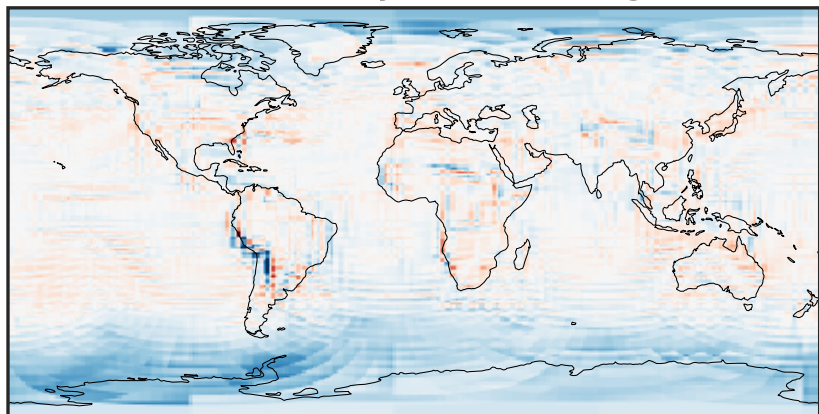
-0.3992 -0.1996 0.0000 0.1996 0.3992  
ppb

Difference (1x1.25)  
Dev - Ref, Restricted Range [5%,95%]



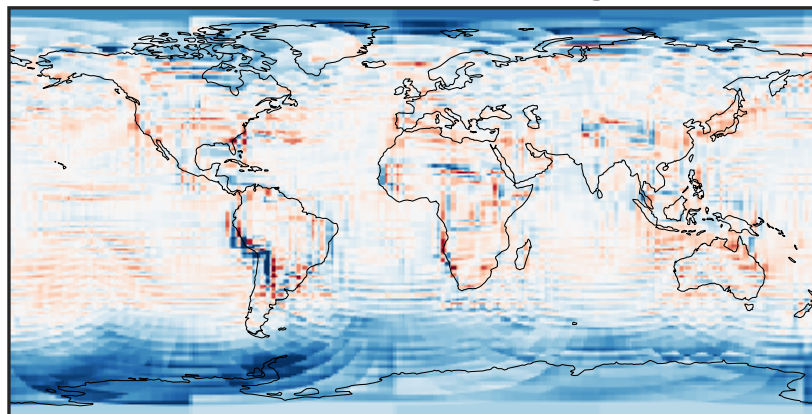
-0.01 0.00 0.01  
ppb

Ratio (1x1.25)  
Dev/Ref, Dynamic Range



0.301 0.651 1.000 2.159 3.318  
unitless

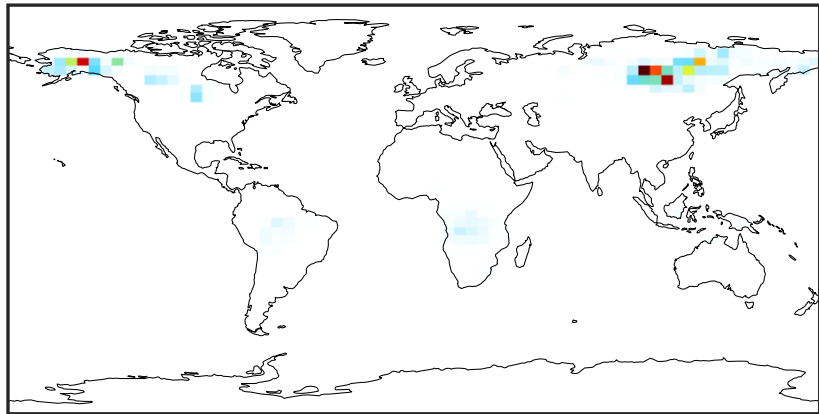
Ratio (1x1.25)  
Dev/Ref, Fixed Range



0.50 0.75 1.00 1.50 2.00  
unitless

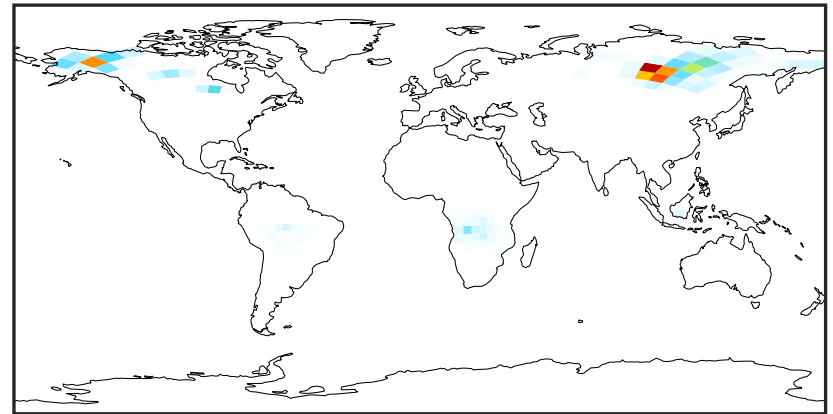
# SpeciesConcVV\_PHEN (Jul2019)

14.3.0-rc.0 (Ref)  
4.0x5.0



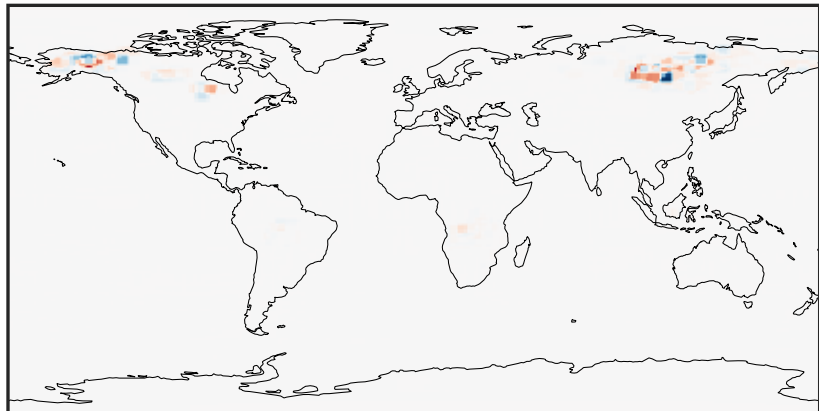
0.000 0.197 0.394 0.591 0.788  
ppb

14.3.0-rc.0 (Dev)  
c24



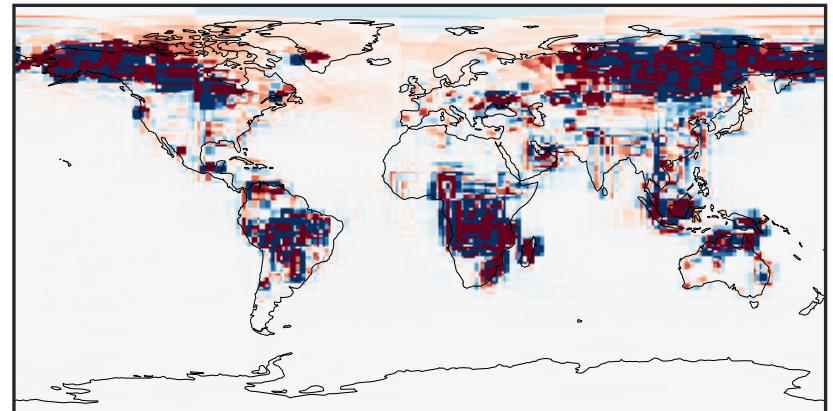
0.000 0.197 0.394 0.591 0.788  
ppb

Difference (1x1.25)  
Dev - Ref, Dynamic Range



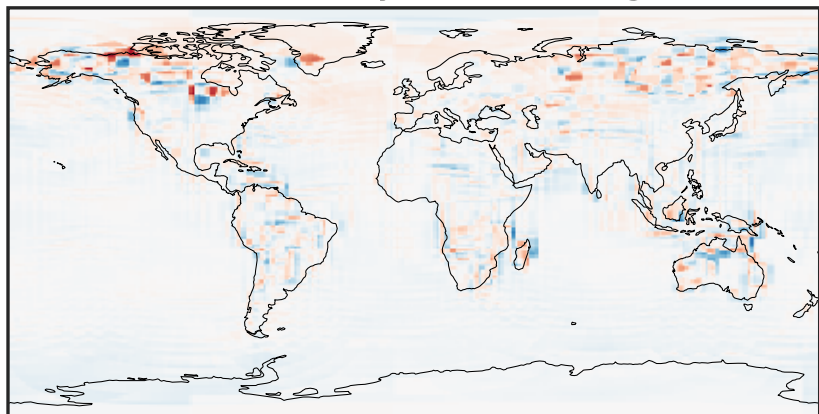
-0.575 -0.287 0.000 0.287 0.575  
ppb

Difference (1x1.25)  
Dev - Ref, Restricted Range [5%,95%]



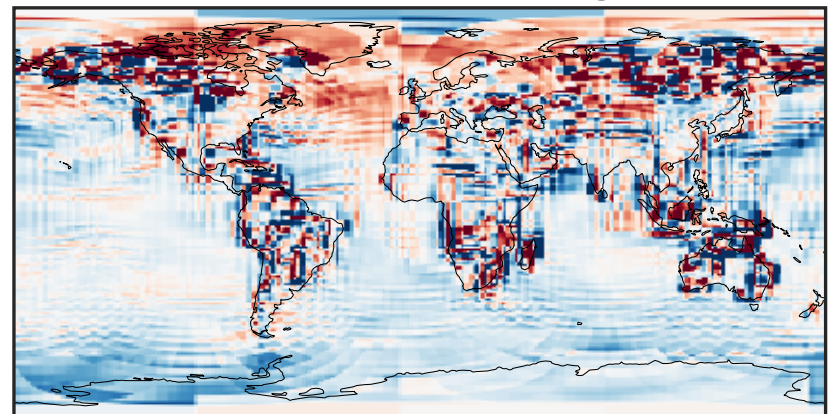
-0.00025 0.00000 0.00025  
ppb

Ratio (1x1.25)  
Dev/Ref, Dynamic Range



1e-02 1e-01 1 10 100  
unitless

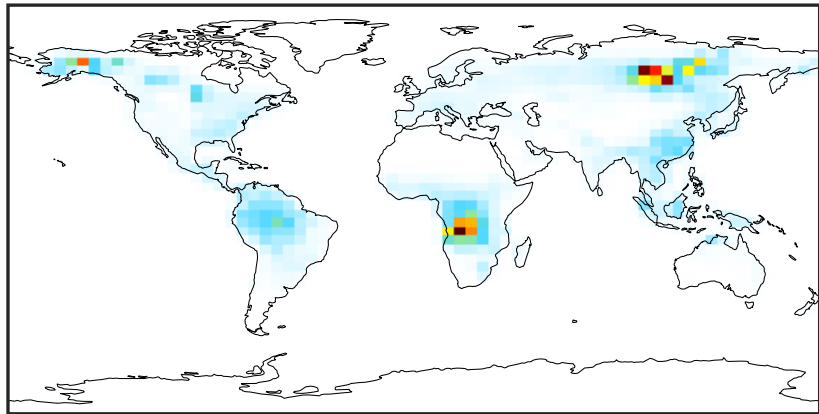
Ratio (1x1.25)  
Dev/Ref, Fixed Range



0.50 0.75 1.00 1.50 2.00  
unitless

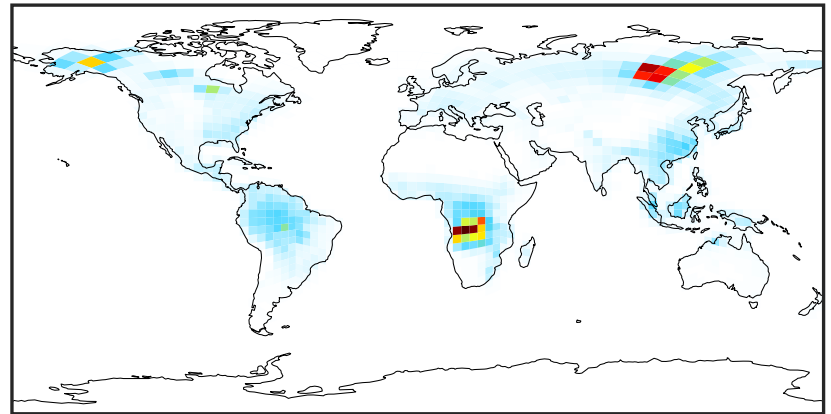
# SpeciesConcVV\_RCHO (Jul2019)

14.3.0-rc.0 (Ref)  
4.0x5.0



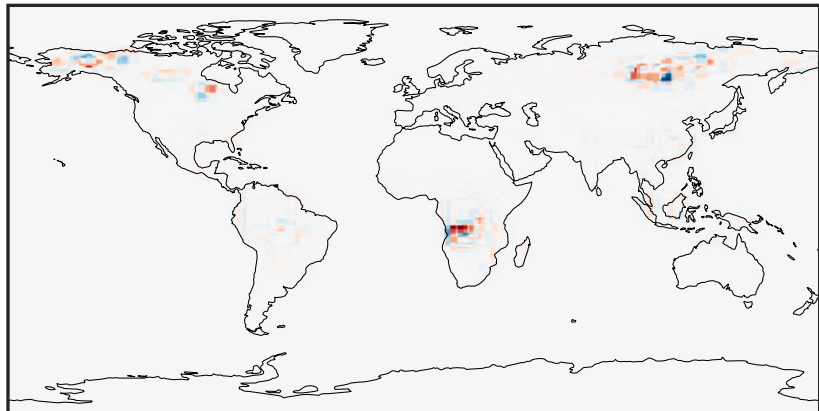
0.000 1.087 2.173 3.260 4.347  
ppb

14.3.0-rc.0 (Dev)  
c24



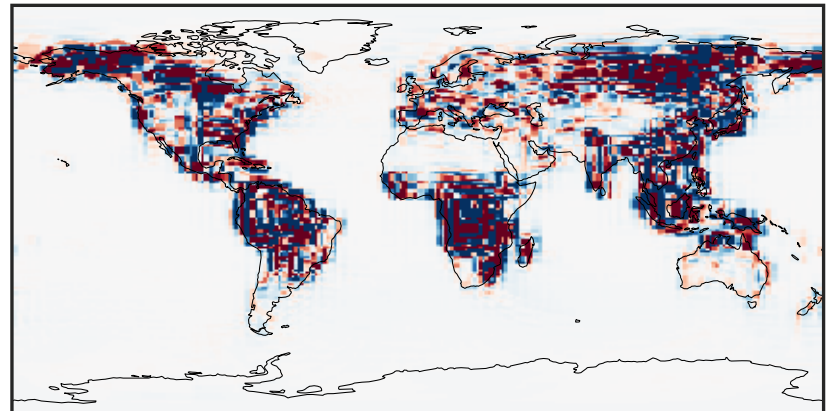
0.000 1.087 2.173 3.260 4.347  
ppb

Difference (1x1.25)  
Dev - Ref, Dynamic Range



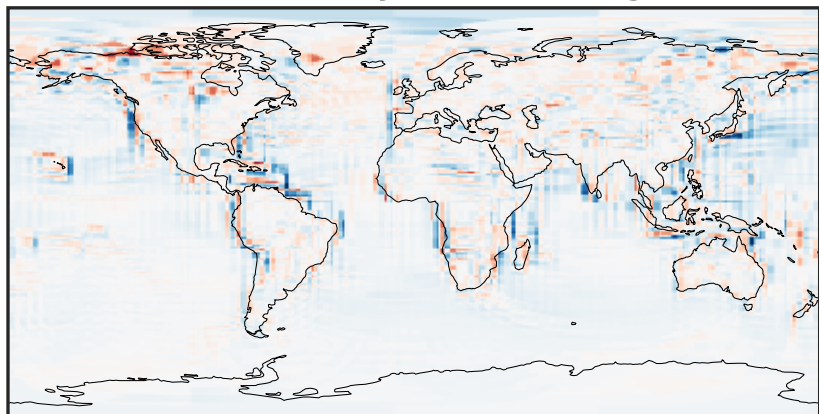
-2.690 -1.345 0.000 1.345 2.690  
ppb

Difference (1x1.25)  
Dev - Ref, Restricted Range [5%,95%]



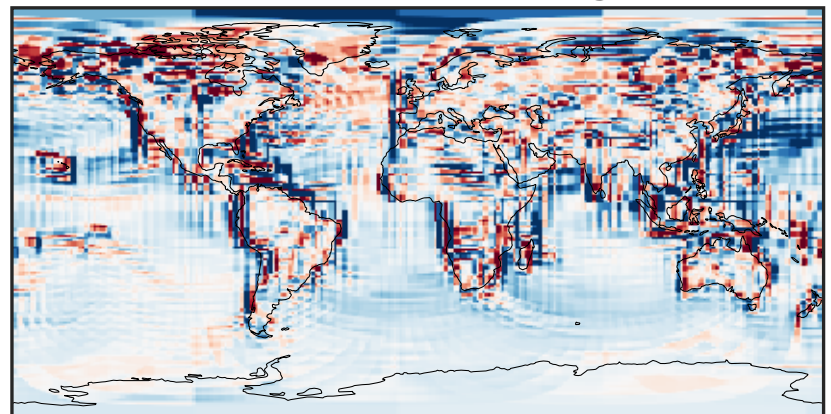
-0.02 0.00 0.02  
ppb

Ratio (1x1.25)  
Dev/Ref, Dynamic Range



1e-01 1 10  
unitless

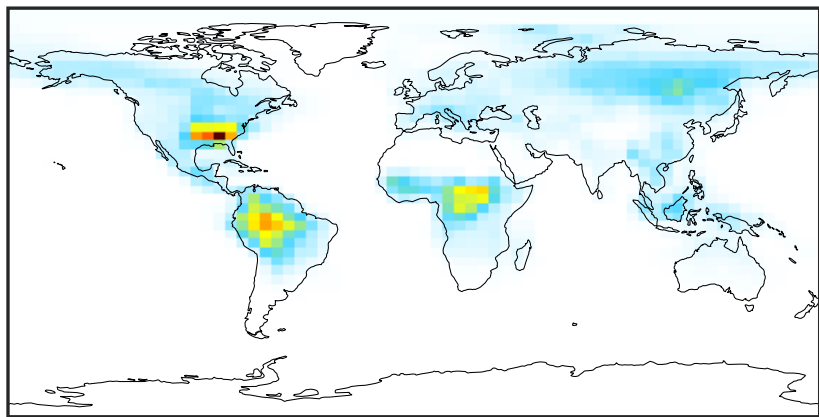
Ratio (1x1.25)  
Dev/Ref, Fixed Range



0.50 0.75 1.00 1.50 2.00  
unitless

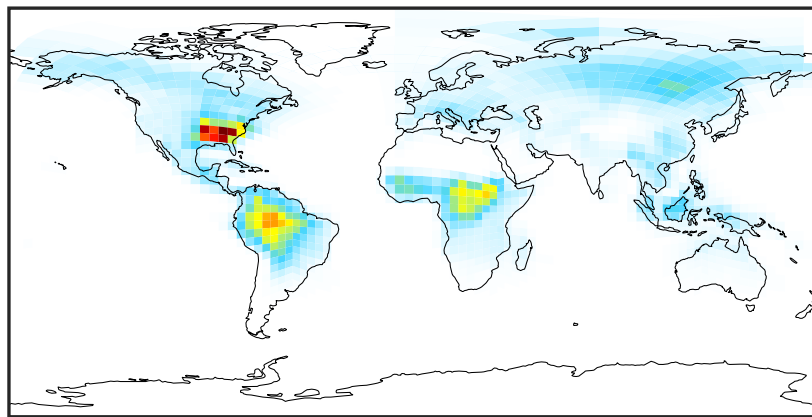
# SpeciesConcVV\_ETHP (Jul2019)

14.3.0-rc.0 (Ref)  
4.0x5.0



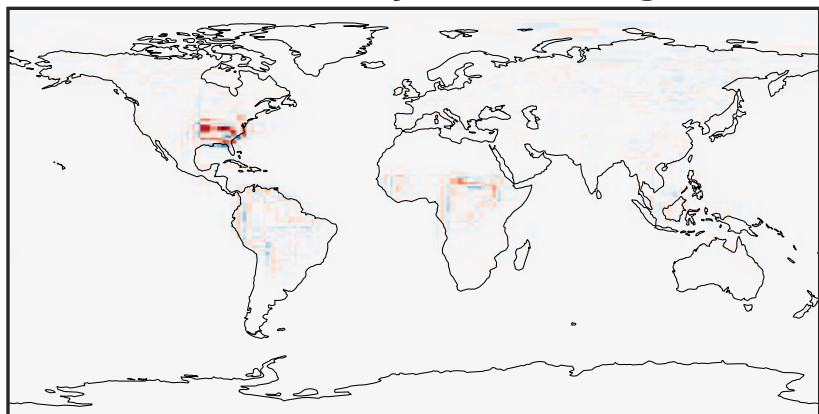
0.0000 0.0769 0.1538 0.2307 0.3075  
ppb

14.3.0-rc.0 (Dev)  
c24



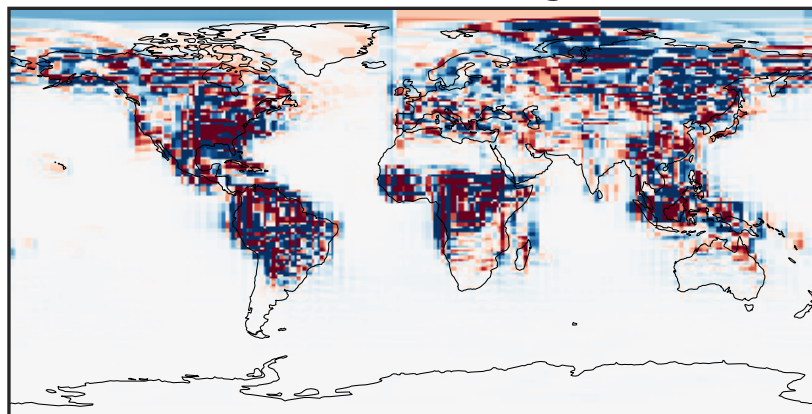
0.0000 0.0769 0.1538 0.2307 0.3075  
ppb

Difference (1x1.25)  
Dev - Ref, Dynamic Range



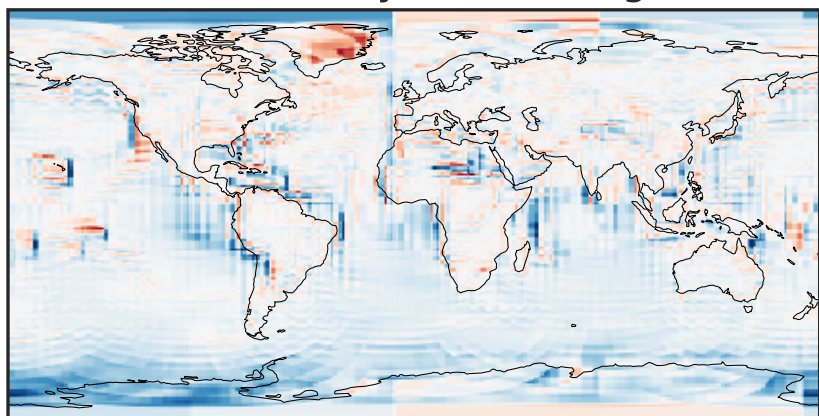
-0.1433 -0.0716 0.0000 0.0716 0.1433  
ppb

Difference (1x1.25)  
Dev - Ref, Restricted Range [5%,95%]



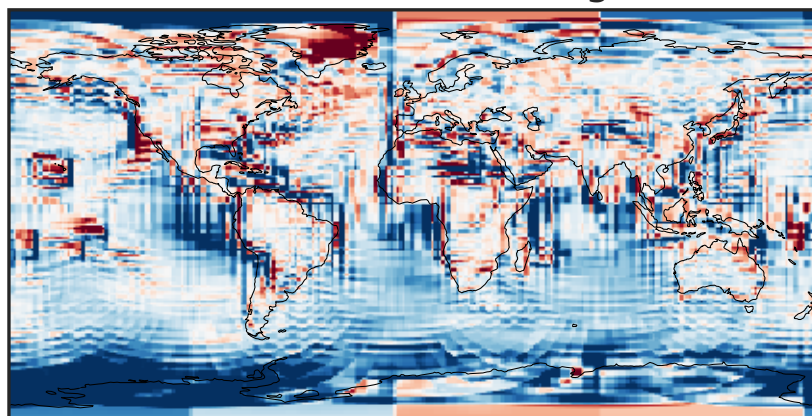
-0.0025 0.0000 0.0025  
ppb

Ratio (1x1.25)  
Dev/Ref, Dynamic Range



1e-01 1 10  
unitless

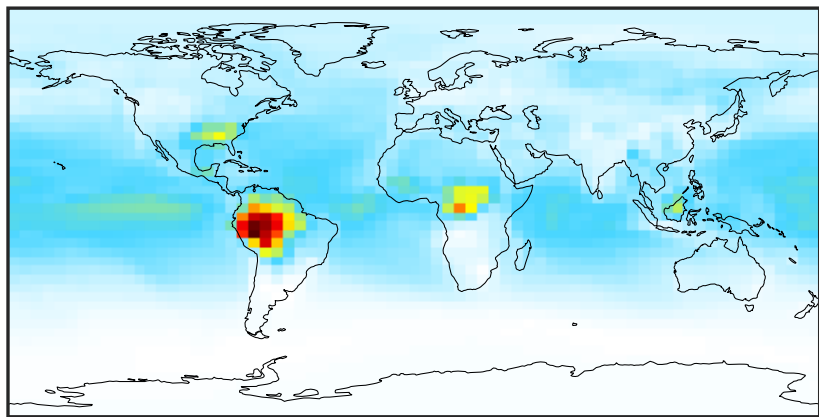
Ratio (1x1.25)  
Dev/Ref, Fixed Range



0.50 0.75 1.00 1.50 2.00  
unitless

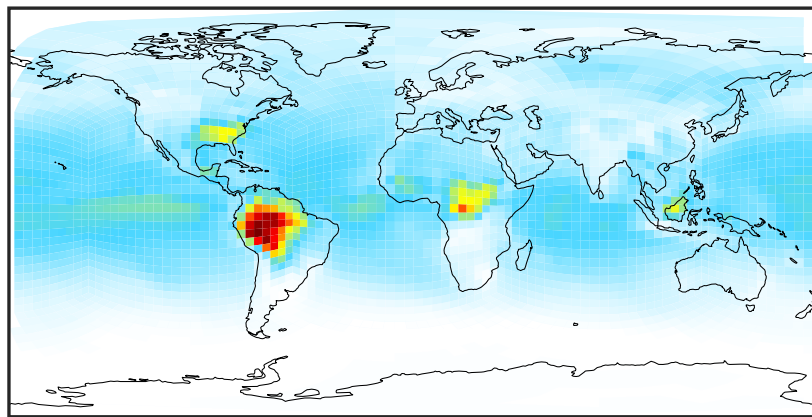
# SpeciesConcVV\_MP (Jul2019)

14.3.0-rc.0 (Ref)  
4.0x5.0



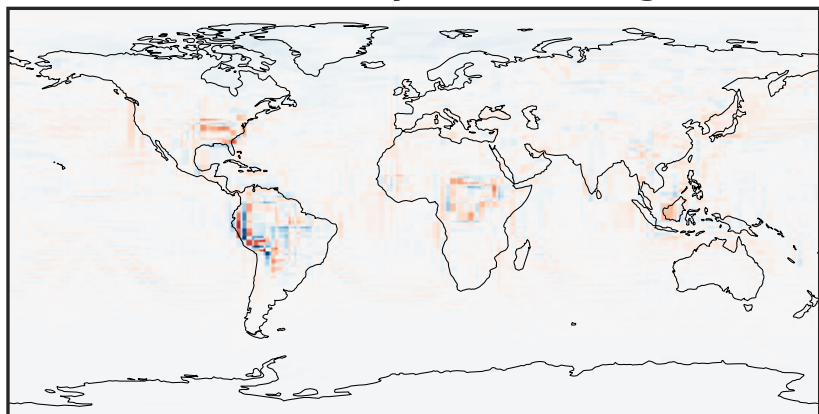
0.083 0.833 1.583 2.333 3.083  
ppb

14.3.0-rc.0 (Dev)  
c24



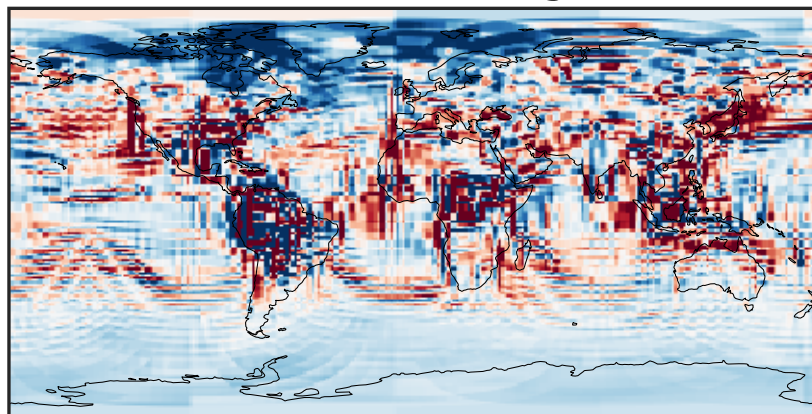
0.083 0.833 1.583 2.333 3.083  
ppb

Difference (1x1.25)  
Dev - Ref, Dynamic Range



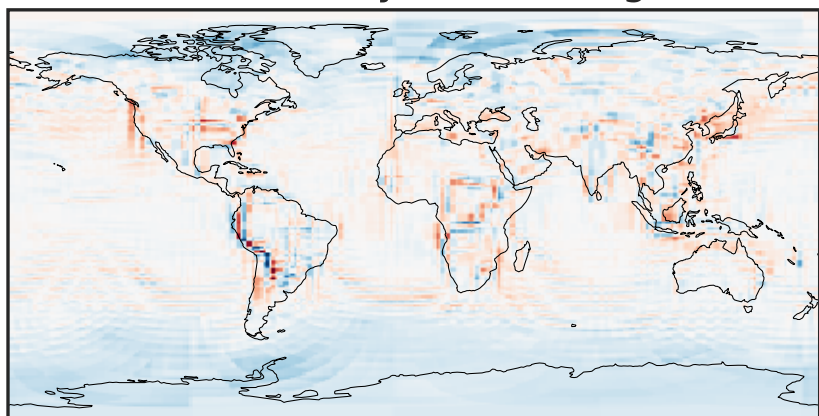
-0.959 -0.479 0.000 0.479 0.959  
ppb

Difference (1x1.25)  
Dev - Ref, Restricted Range [5%,95%]



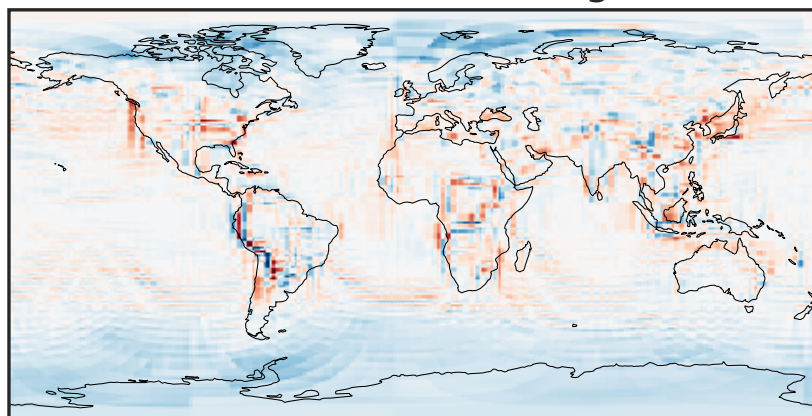
-0.058 -0.029 0.000 0.029 0.058  
ppb

Ratio (1x1.25)  
Dev/Ref, Dynamic Range



0.433 0.716 1.000 1.655 2.310  
unitless

Ratio (1x1.25)  
Dev/Ref, Fixed Range



0.50 0.75 1.00 1.50 2.00  
unitless