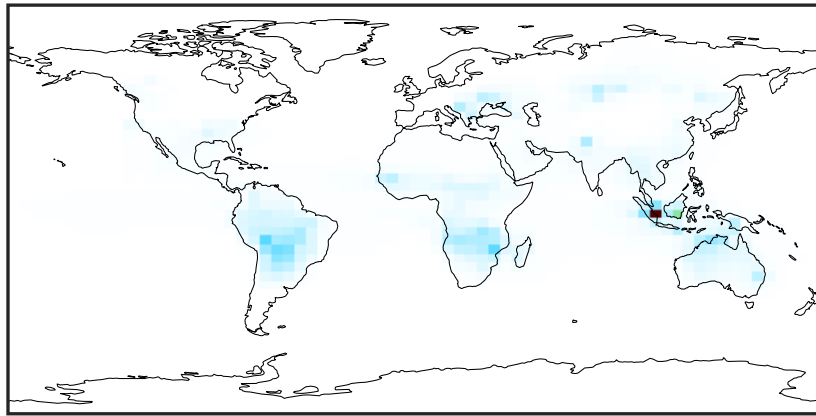


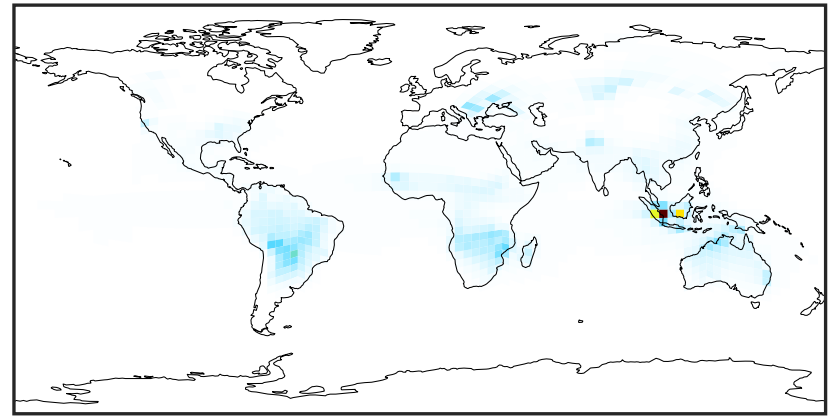
SpeciesConcVV_ACTA (Oct2019)

14.3.0-rc.0 (Ref)
4.0x5.0



0.003 1.889 3.776 5.663 7.550
ppb

14.3.0-rc.0 (Dev)
c24



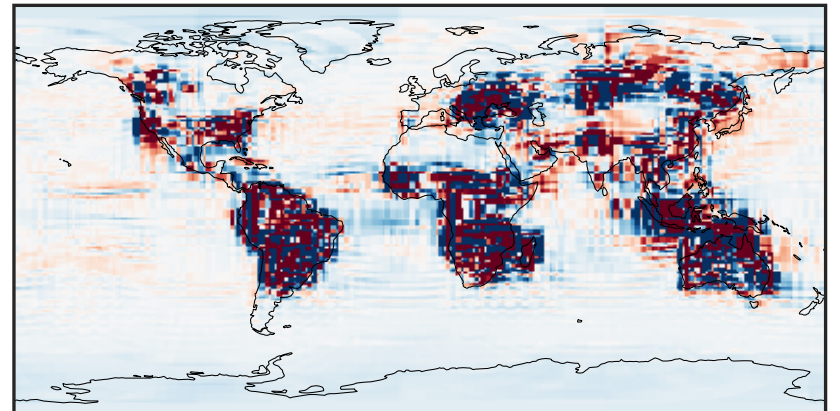
0.003 1.889 3.776 5.663 7.550
ppb

Difference (1x1.25)
Dev - Ref, Dynamic Range



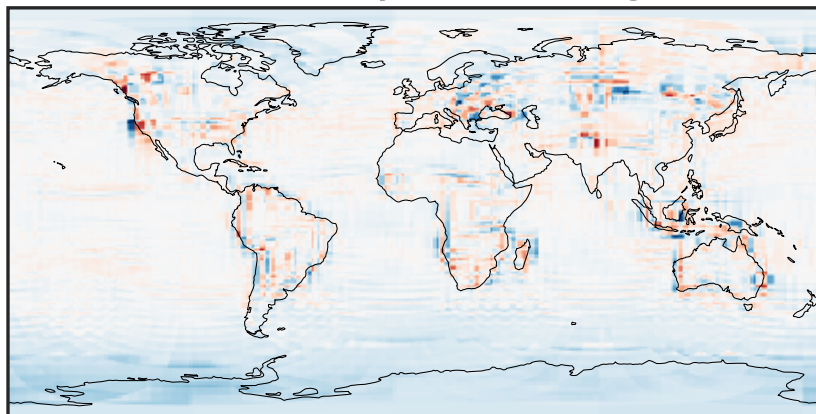
-3.44 -1.72 0.00 1.72 3.44
ppb

Difference (1x1.25)
Dev - Ref, Restricted Range [5%,95%]



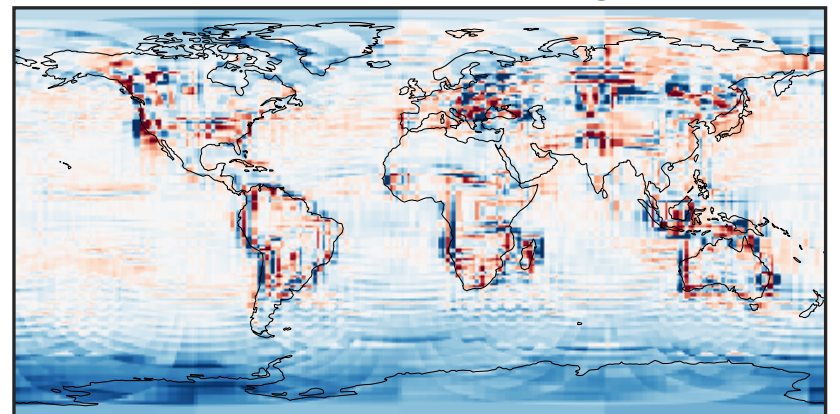
-0.01 0.00 0.01
ppb

Ratio (1x1.25)
Dev/Ref, Dynamic Range



0.162 0.581 1.000 3.595 6.190
unitless

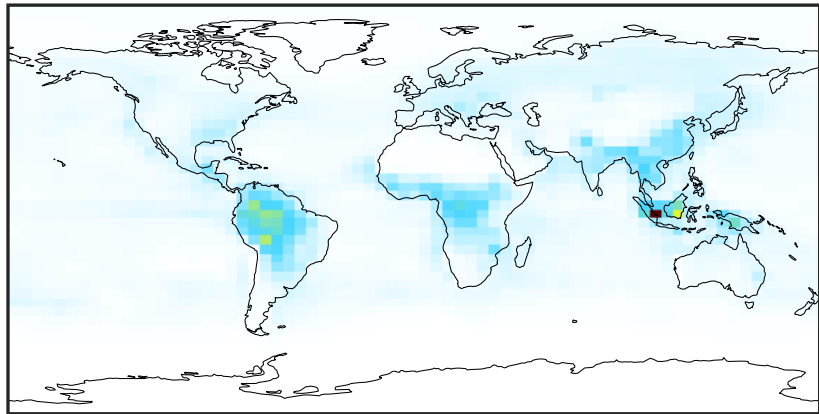
Ratio (1x1.25)
Dev/Ref, Fixed Range



0.50 0.75 1.00 1.50 2.00
unitless

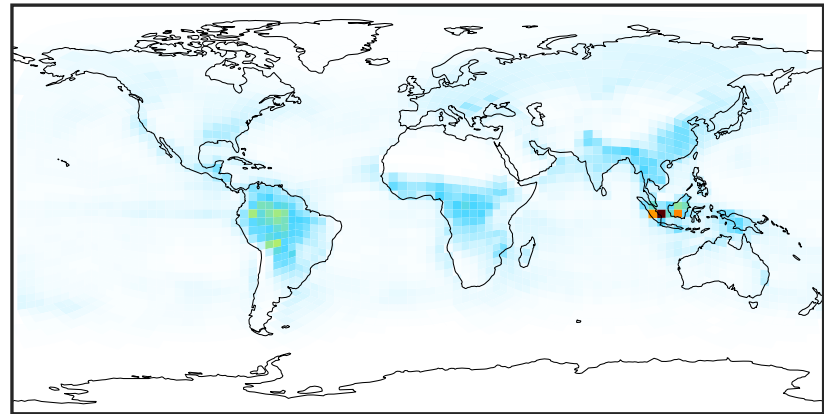
SpeciesConcVW_ALD2 (Oct2019)

14.3.0-rc.0 (Ref)
4.0x5.0



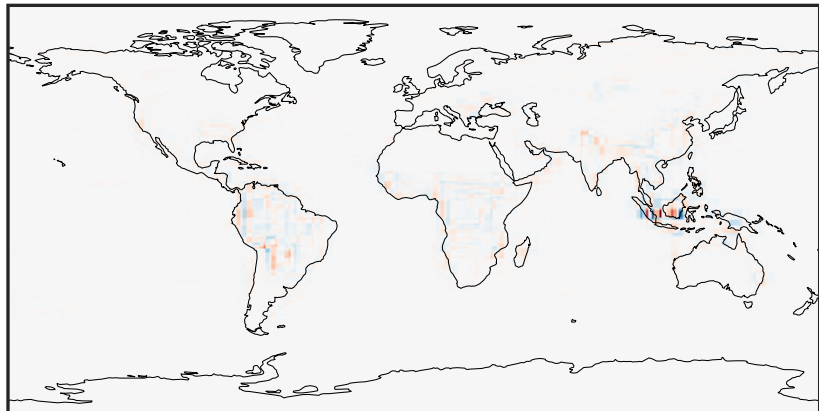
0.001 1.528 3.055 4.581 6.108
ppb

14.3.0-rc.0 (Dev)
c24



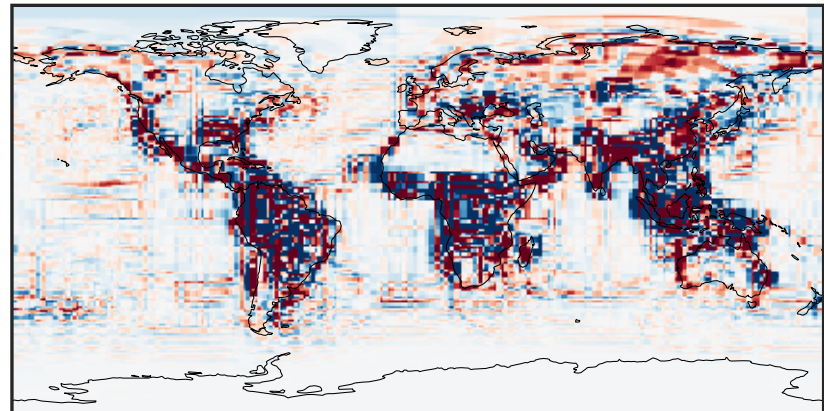
0.001 1.528 3.055 4.581 6.108
ppb

Difference (1x1.25)
Dev - Ref, Dynamic Range



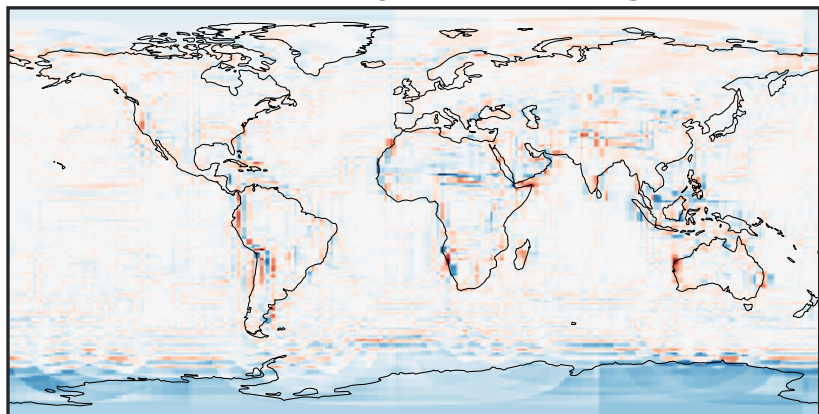
-2.32 -1.16 0.00 1.16 2.32
ppb

Difference (1x1.25)
Dev - Ref, Restricted Range [5%,95%]



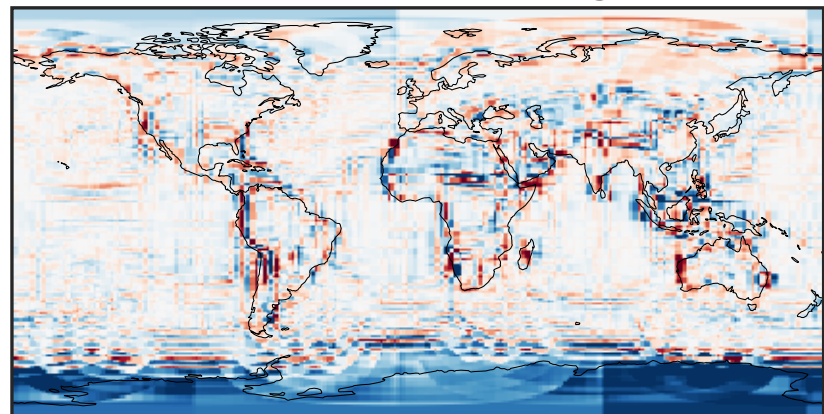
-0.025 0.000 0.025
ppb

Ratio (1x1.25)
Dev/Ref, Dynamic Range



0.184 0.592 1.000 3.224 5.447
unitless

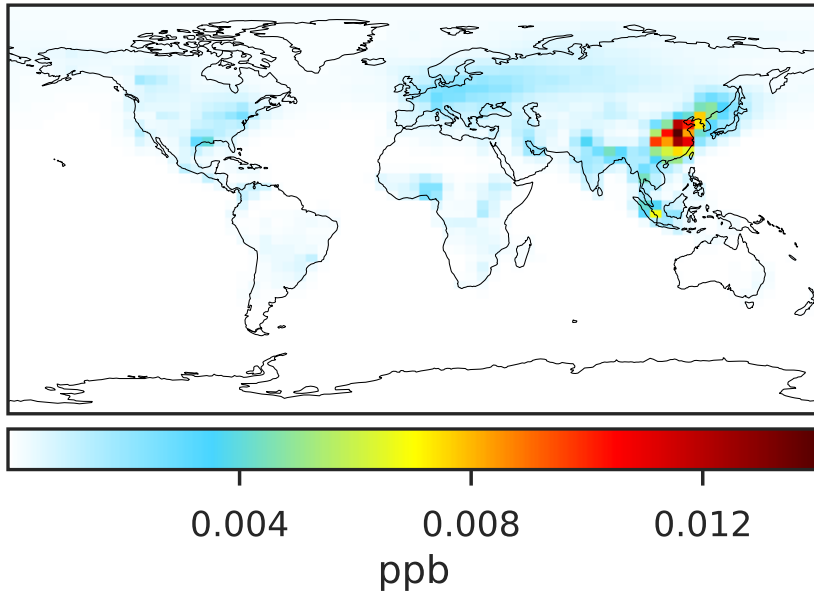
Ratio (1x1.25)
Dev/Ref, Fixed Range



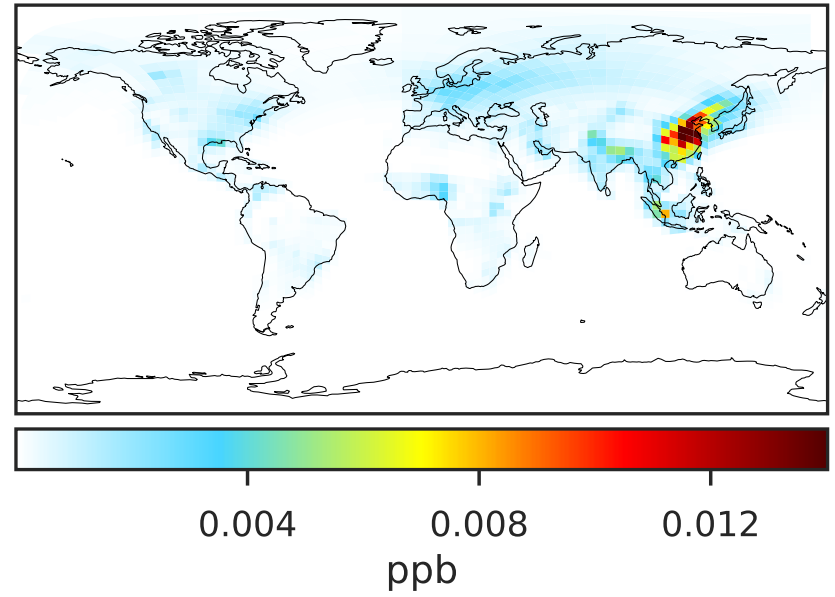
0.50 0.75 1.00 1.50 2.00
unitless

SpeciesConcVV_BALD (Oct2019)

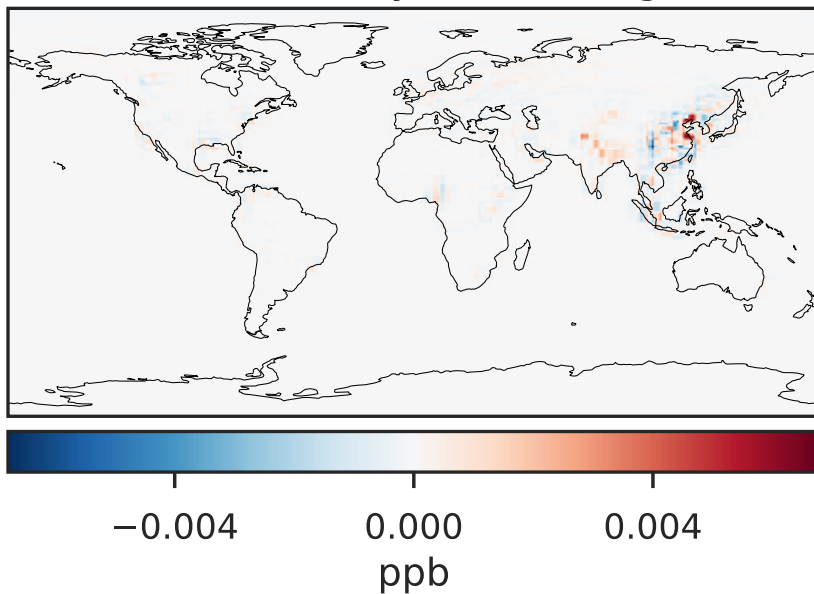
14.3.0-rc.0 (Ref)
4.0x5.0



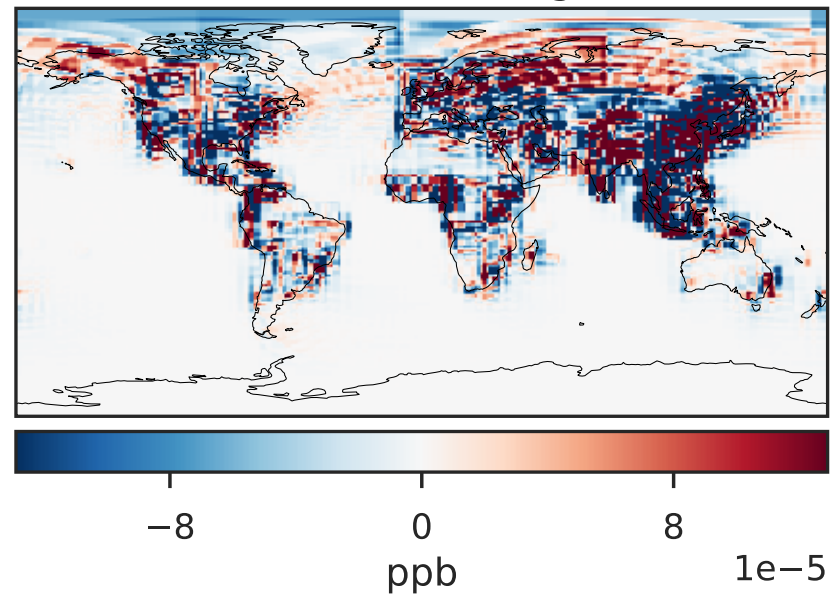
14.3.0-rc.0 (Dev)
c24



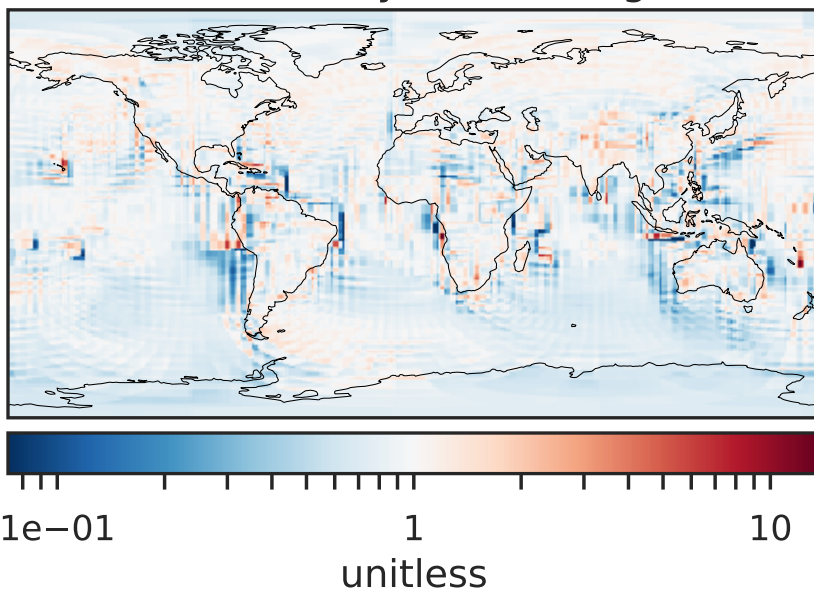
Difference (1x1.25)
Dev - Ref, Dynamic Range



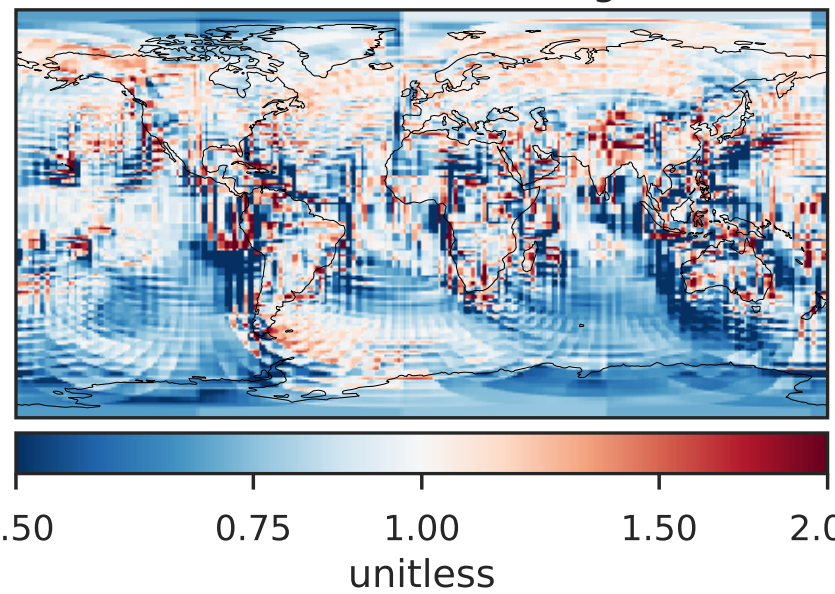
Difference (1x1.25)
Dev - Ref, Restricted Range [5%,95%]



Ratio (1x1.25)
Dev/Ref, Dynamic Range

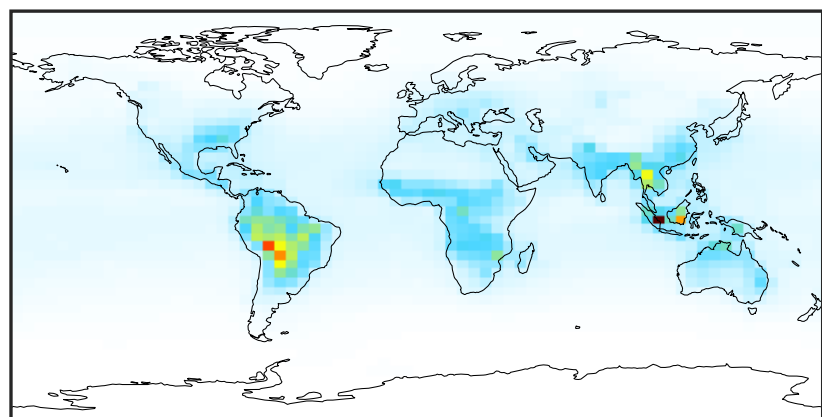


Ratio (1x1.25)
Dev/Ref, Fixed Range



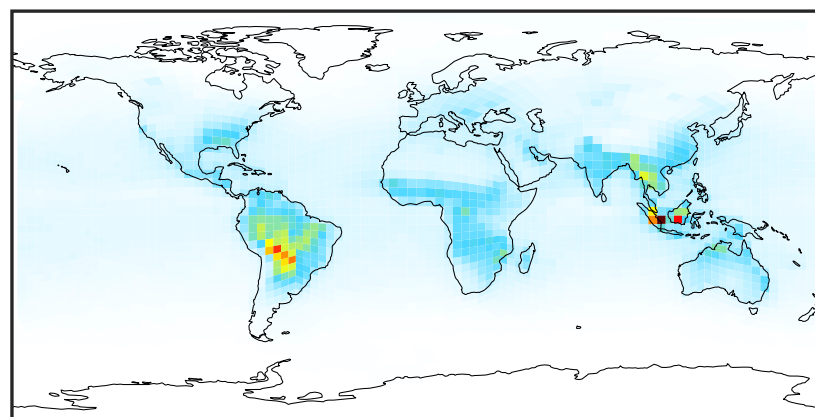
SpeciesConcVV_CH2O (Oct2019)

14.3.0-rc.0 (Ref)
4.0x5.0



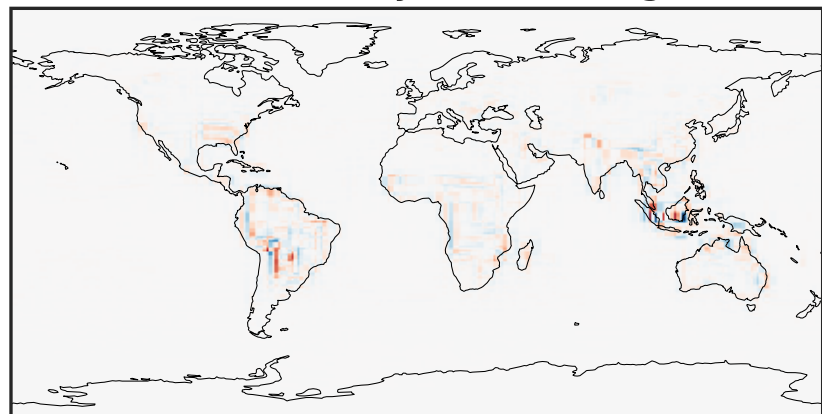
0.017 2.447 4.877 7.307 9.736
ppb

14.3.0-rc.0 (Dev)
c24



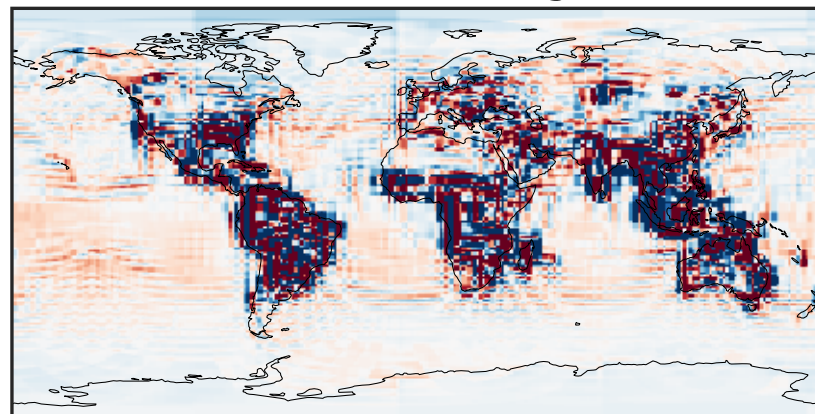
0.017 2.447 4.877 7.307 9.736
ppb

Difference (1x1.25)
Dev - Ref, Dynamic Range



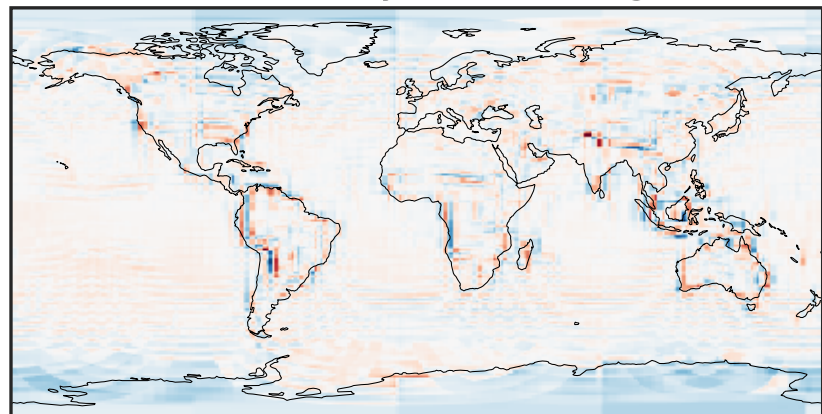
-3.466 -1.733 0.000 1.733 3.466
ppb

Difference (1x1.25)
Dev - Ref, Restricted Range [5%,95%]



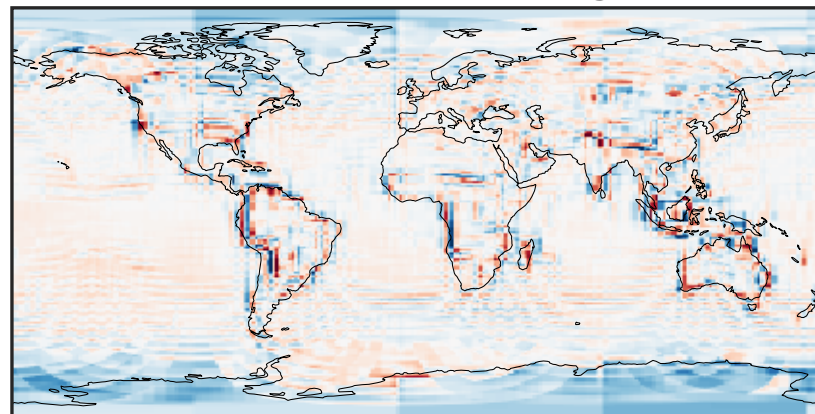
-0.0881 -0.0441 0.0000 0.0441 0.0881
ppb

Ratio (1x1.25)
Dev/Ref, Dynamic Range



0.332 0.666 1.000 2.008 3.015
unitless

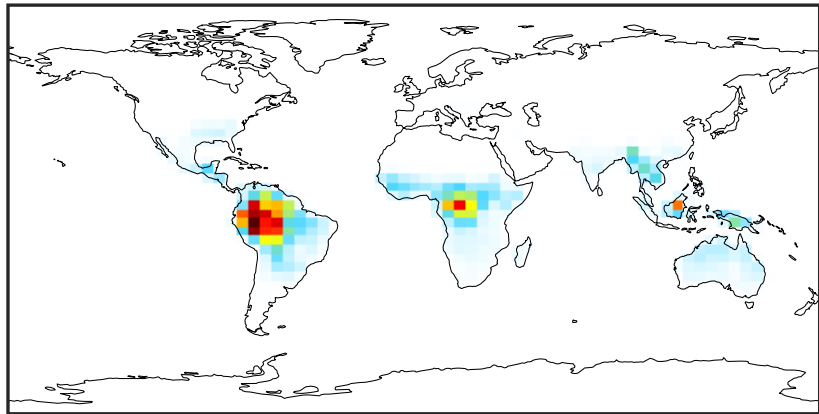
Ratio (1x1.25)
Dev/Ref, Fixed Range



0.50 0.75 1.00 1.50 2.00
unitless

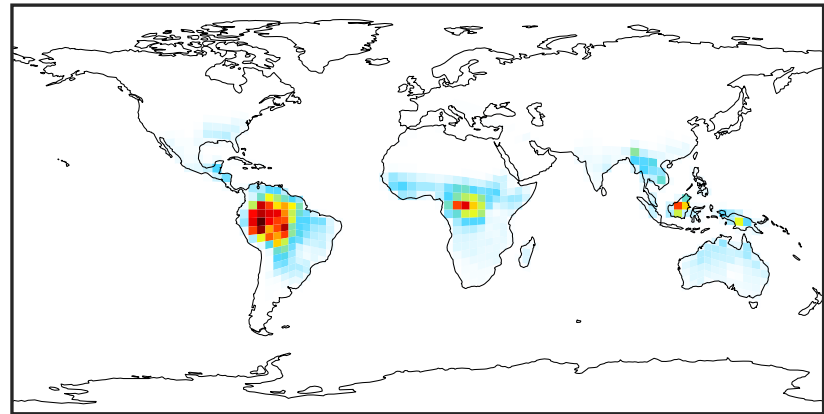
SpeciesConcVV_HPALDs (Oct2019)

14.3.0-rc.0 (Ref)
4.0x5.0



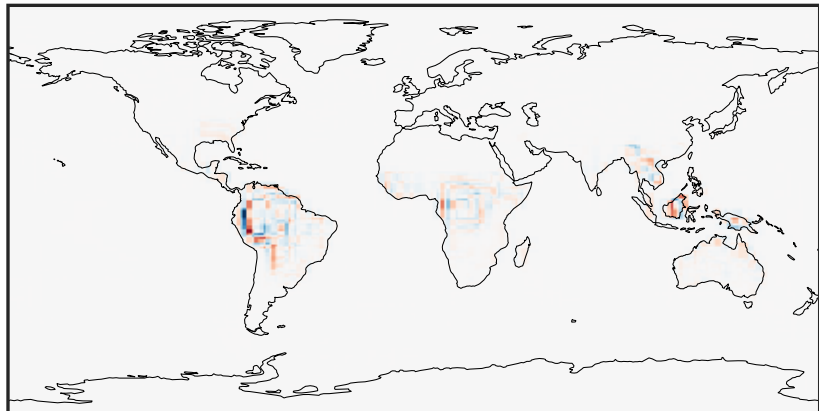
0.0000 0.0807 0.1613 0.2420 0.3226
ppb

14.3.0-rc.0 (Dev)
c24



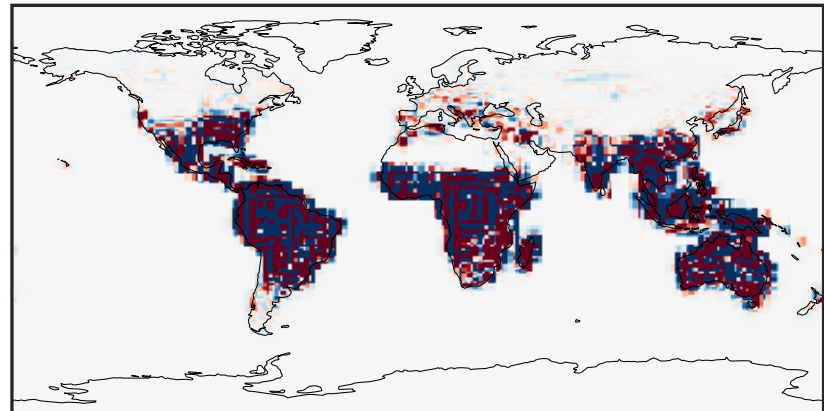
0.0000 0.0807 0.1613 0.2420 0.3226
ppb

Difference (1x1.25)
Dev - Ref, Dynamic Range



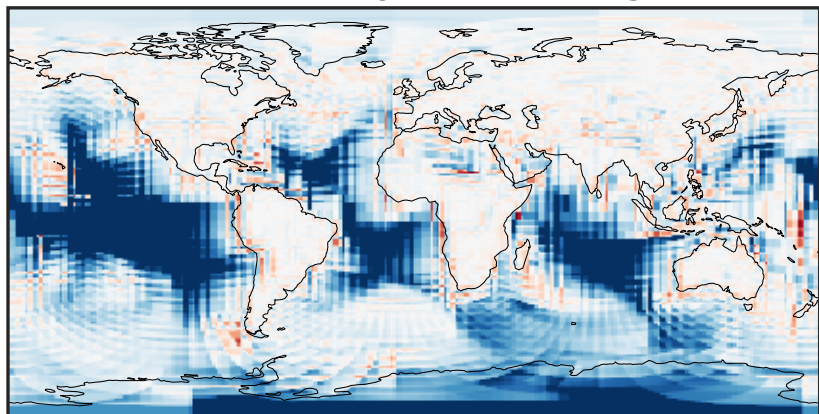
-0.1525 -0.0762 0.0000 0.0762 0.1525
ppb

Difference (1x1.25)
Dev - Ref, Restricted Range [5%,95%]



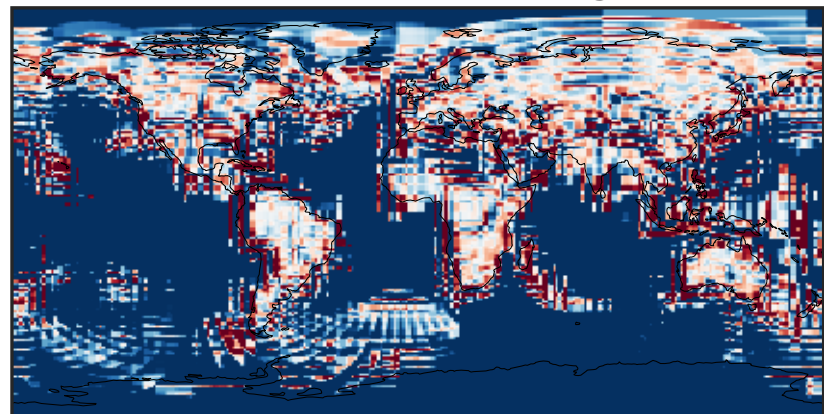
-0.0004 0.0000 0.0004
ppb

Ratio (1x1.25)
Dev/Ref, Dynamic Range



1e-02 1e-01 1 10 100
unitless

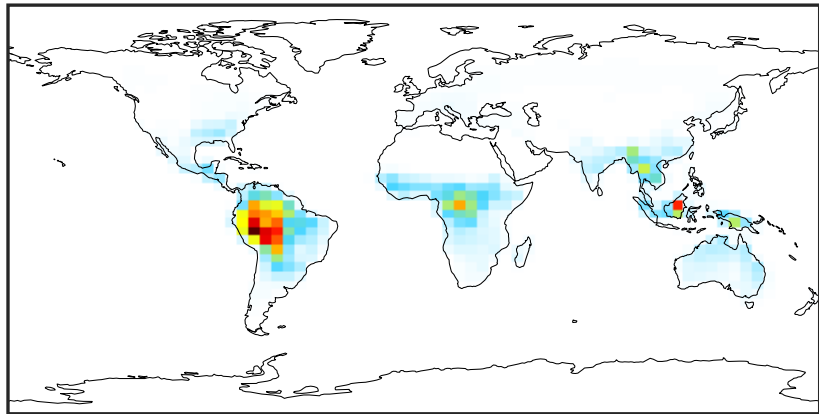
Ratio (1x1.25)
Dev/Ref, Fixed Range



0.50 0.75 1.00 1.50 2.00
unitless

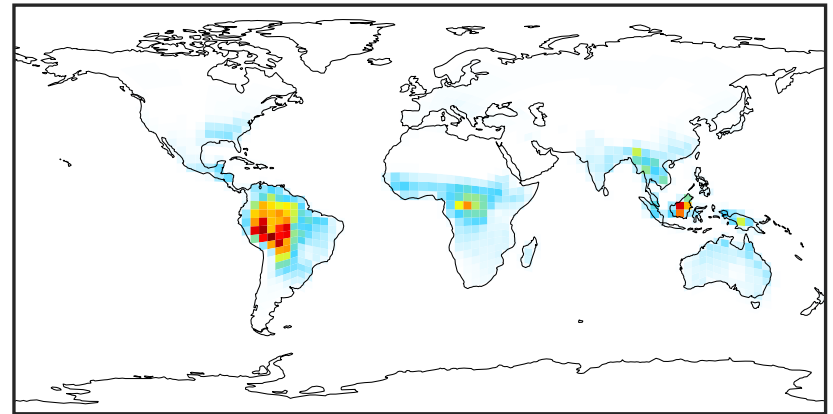
SpeciesConcVV_MACR (Oct2019)

14.3.0-rc.0 (Ref)
4.0x5.0



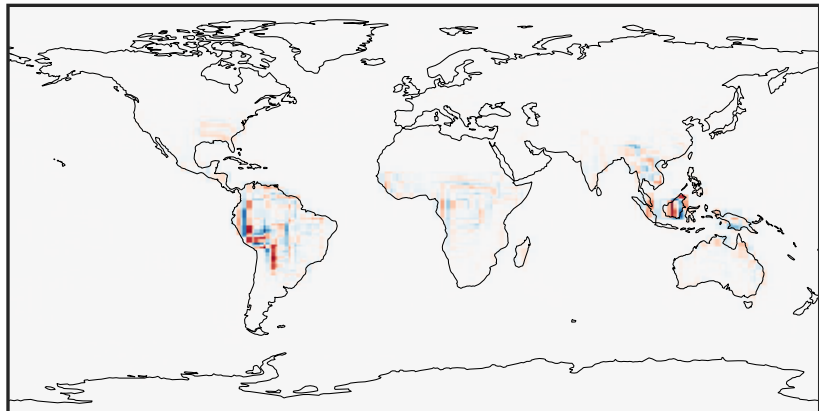
0.00 0.35 0.70 1.05 1.40
ppb

14.3.0-rc.0 (Dev)
c24



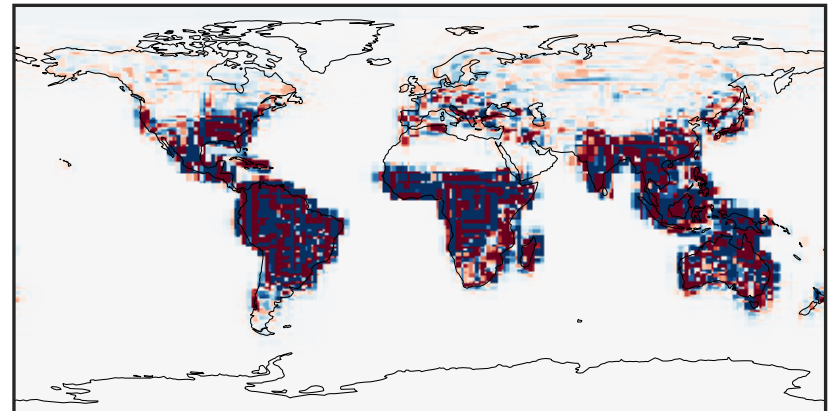
0.00 0.35 0.70 1.05 1.40
ppb

Difference (1x1.25)
Dev - Ref, Dynamic Range



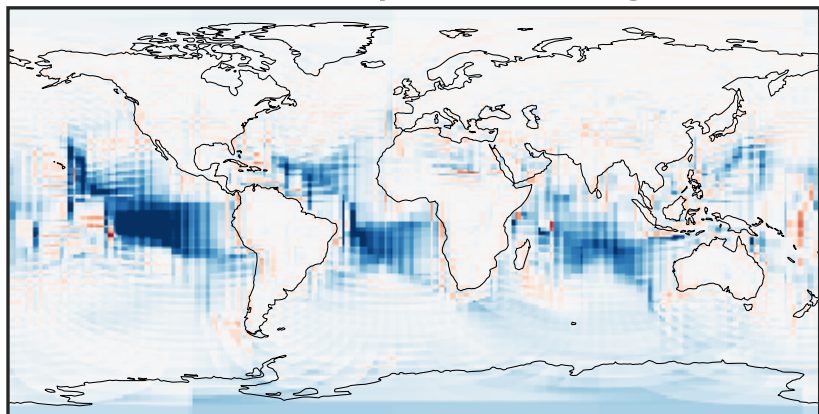
-0.529 -0.264 0.000 0.264 0.529
ppb

Difference (1x1.25)
Dev - Ref, Restricted Range [5%,95%]



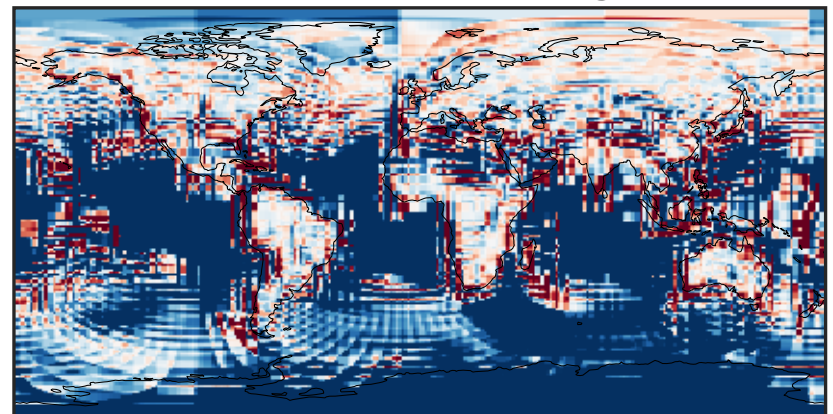
-0.003 0.000 0.003
ppb

Ratio (1x1.25)
Dev/Ref, Dynamic Range



1e-03 1e-02 1e-01 1 10 100 1000
unitless

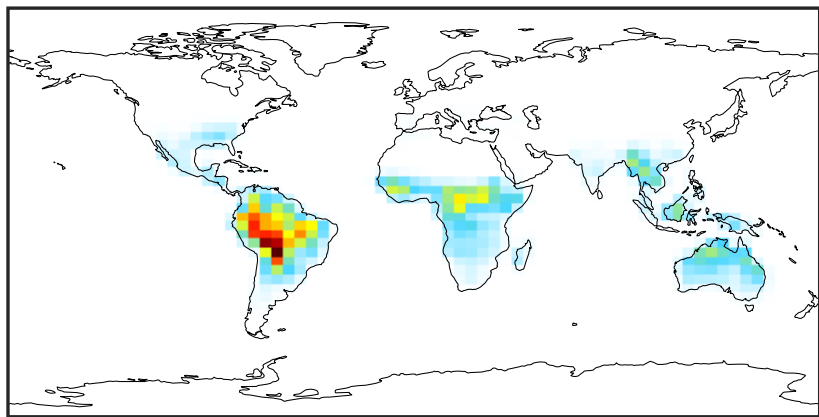
Ratio (1x1.25)
Dev/Ref, Fixed Range



0.50 0.75 1.00 1.50 2.00
unitless

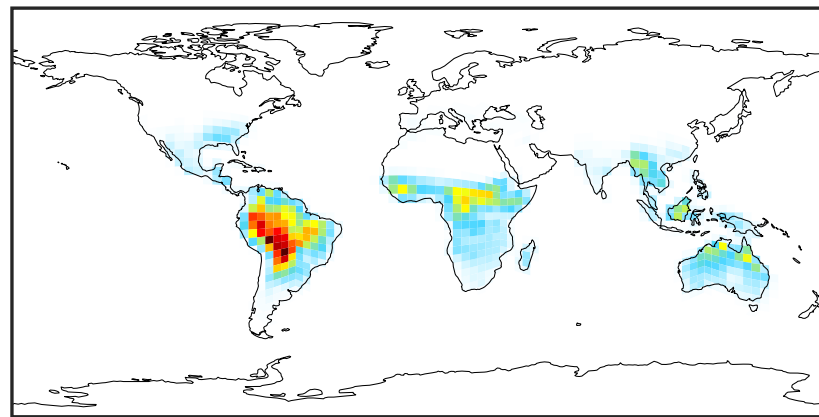
SpeciesConcVV_IEPOX (Oct2019)

14.3.0-rc.0 (Ref)
4.0x5.0



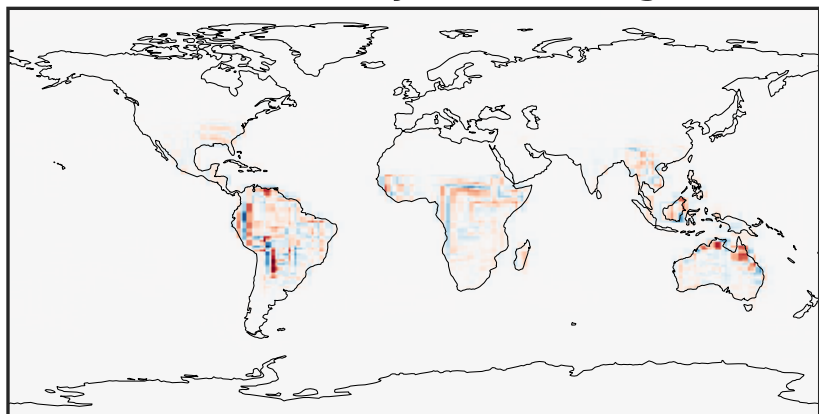
0.000 0.278 0.557 0.835 1.113
ppb

14.3.0-rc.0 (Dev)
c24



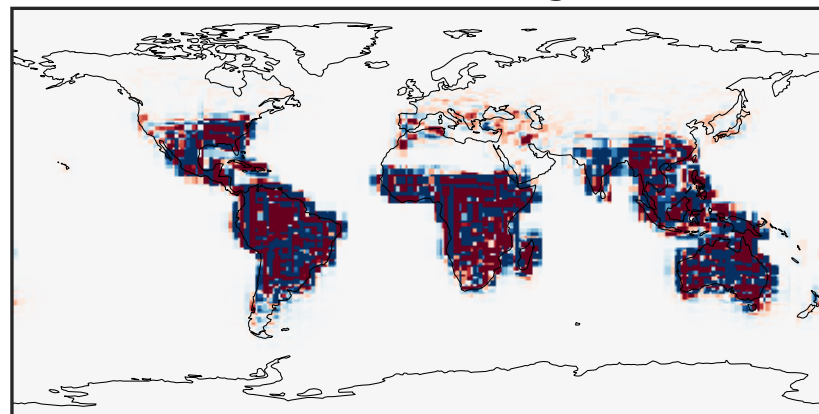
0.000 0.278 0.557 0.835 1.113
ppb

Difference (1x1.25)
Dev - Ref, Dynamic Range



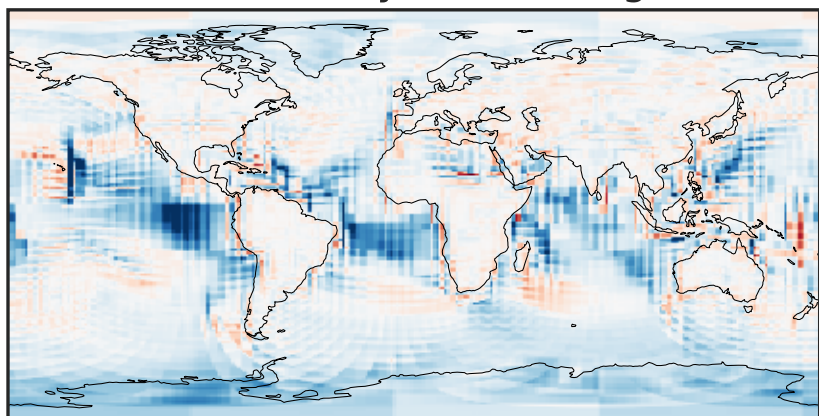
-0.3951 -0.1976 0.0000 0.1976 0.3951
ppb

Difference (1x1.25)
Dev - Ref, Restricted Range [5%,95%]



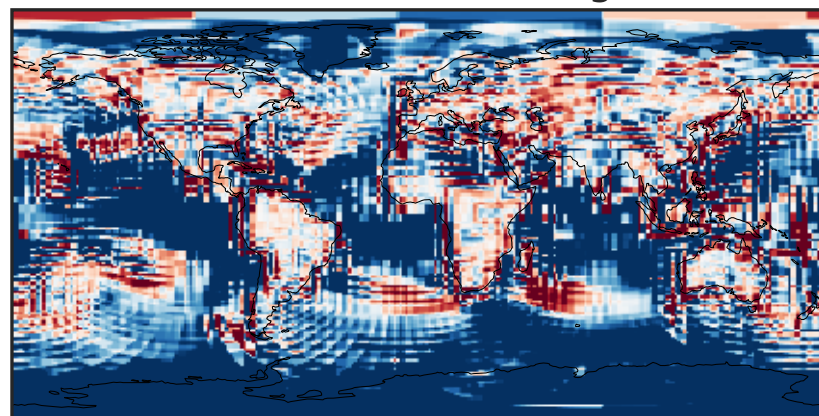
-0.003 0.000 0.003
ppb

Ratio (1x1.25)
Dev/Ref, Dynamic Range



1e-02 1e-01 1 10 100
unitless

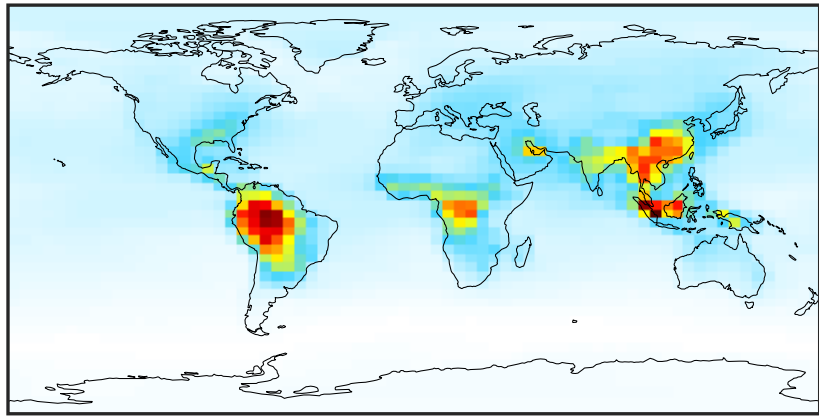
Ratio (1x1.25)
Dev/Ref, Fixed Range



0.50 0.75 1.00 1.50 2.00
unitless

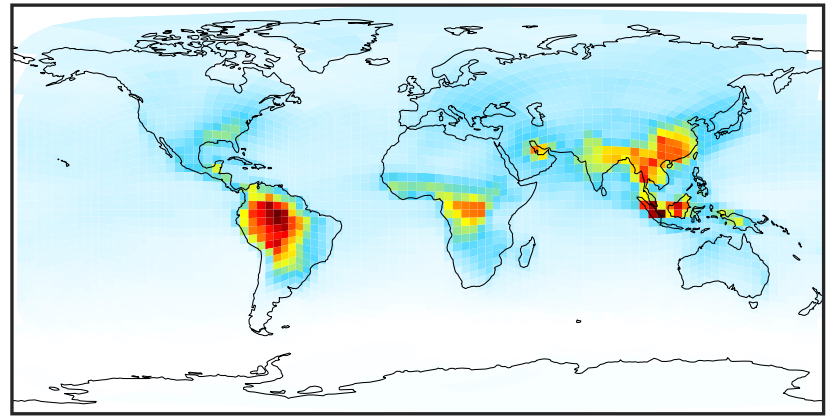
SpeciesConcVV_ACET (Oct2019)

14.3.0-rc.0 (Ref)
4.0x5.0



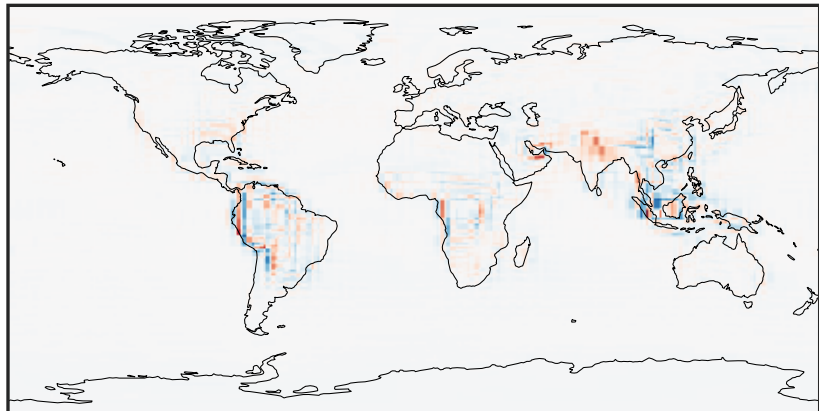
0.134 1.763 3.391 5.019 6.648
ppb

14.3.0-rc.0 (Dev)
c24



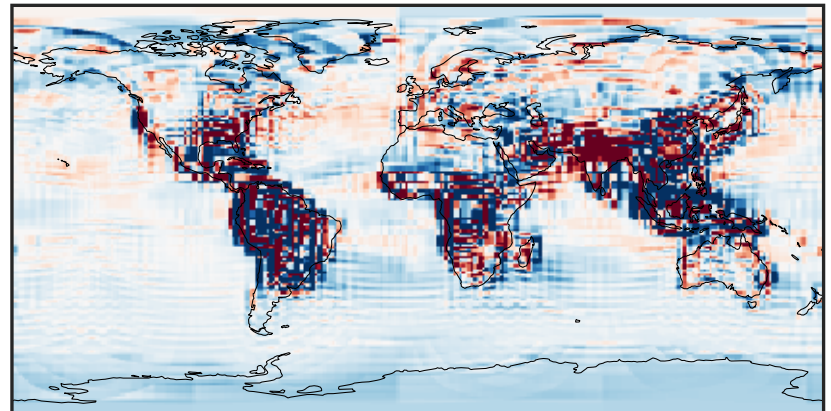
0.134 1.763 3.391 5.019 6.648
ppb

Difference (1x1.25)
Dev - Ref, Dynamic Range



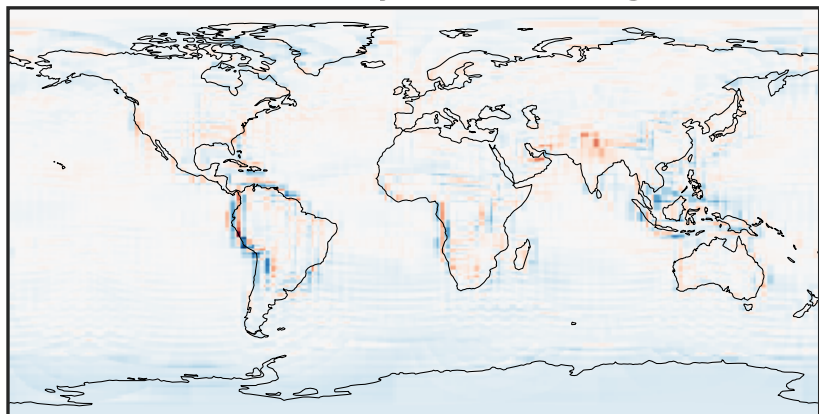
-2.391 -1.195 0.000 1.195 2.391
ppb

Difference (1x1.25)
Dev - Ref, Restricted Range [5%,95%]



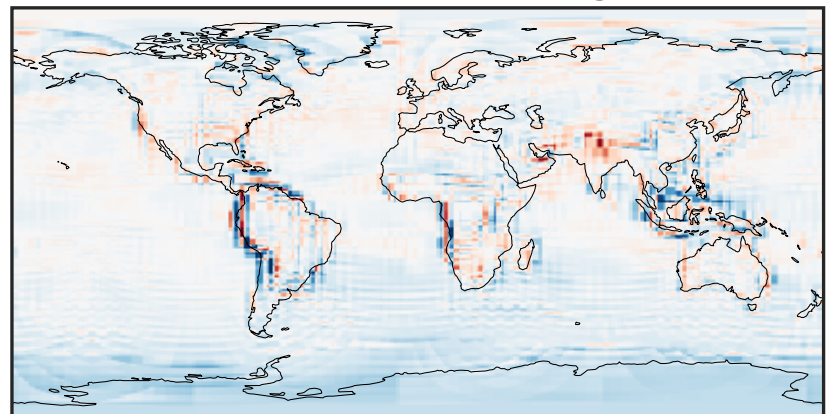
-0.1231 -0.0616 0.0000 0.0616 0.1231
ppb

Ratio (1x1.25)
Dev/Ref, Dynamic Range



0.301 0.650 1.000 2.163 3.325
unitless

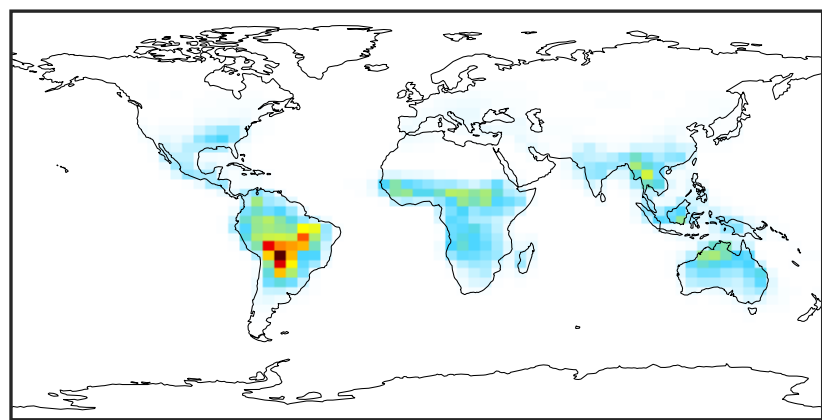
Ratio (1x1.25)
Dev/Ref, Fixed Range



0.50 0.75 1.00 1.50 2.00
unitless

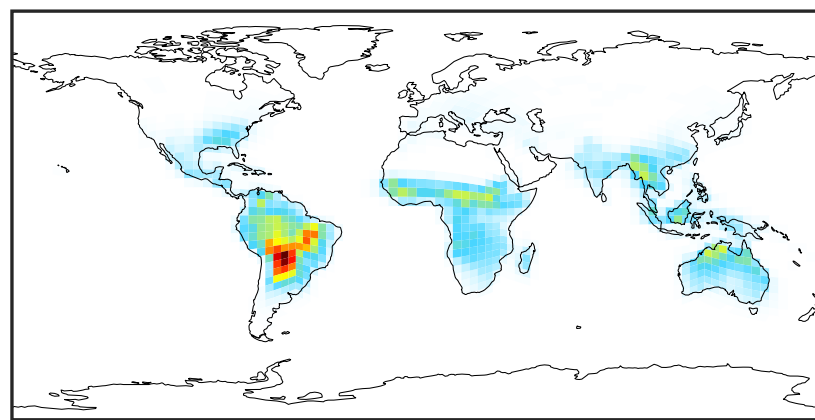
SpeciesConcVV_HAC (Oct2019)

14.3.0-rc.0 (Ref)
4.0x5.0



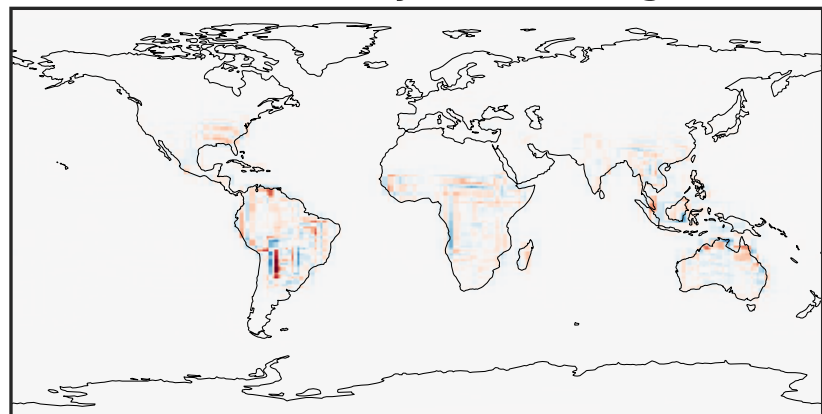
0.000 0.265 0.531 0.796 1.061
ppb

14.3.0-rc.0 (Dev)
c24



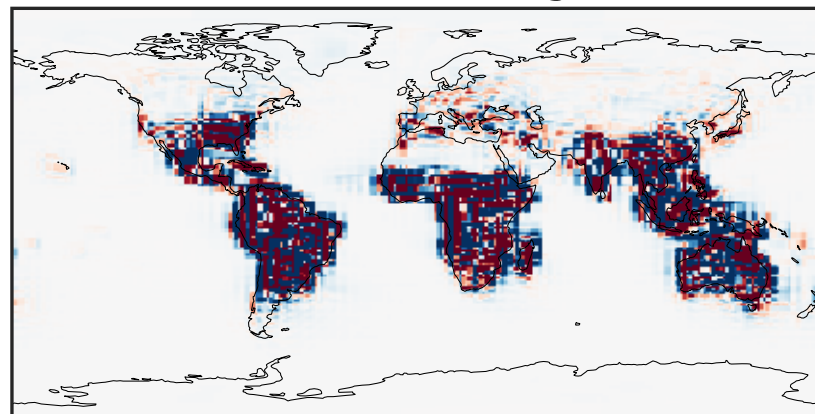
0.000 0.265 0.531 0.796 1.061
ppb

Difference (1x1.25)
Dev - Ref, Dynamic Range



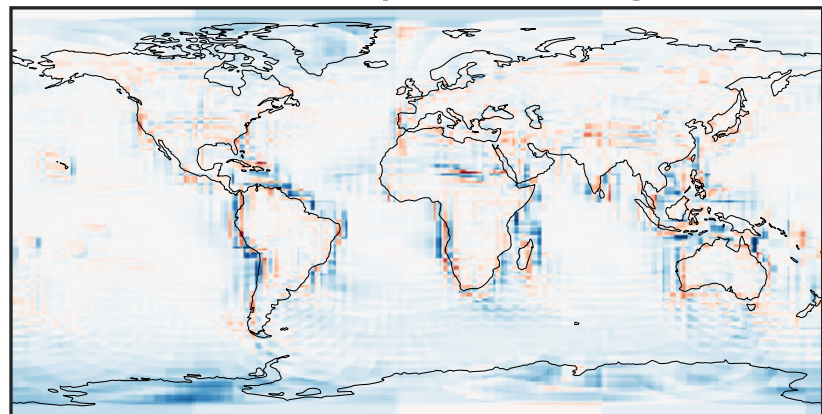
-0.3822 -0.1911 0.0000 0.1911 0.3822
ppb

Difference (1x1.25)
Dev - Ref, Restricted Range [5%,95%]



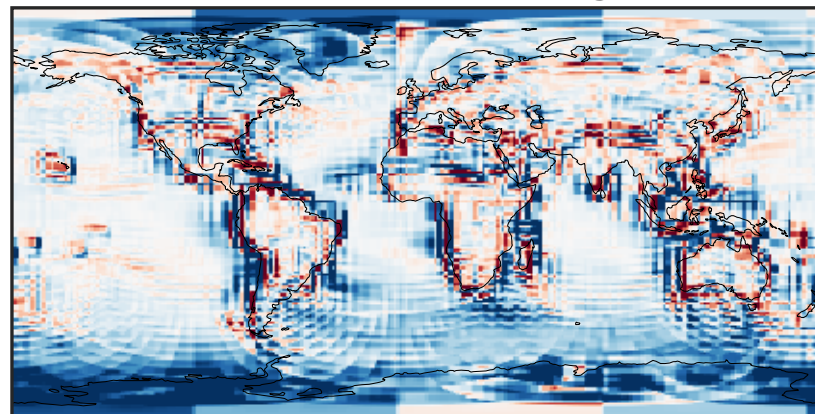
-0.005 0.000 0.005
ppb

Ratio (1x1.25)
Dev/Ref, Dynamic Range



1e-01 1 10
unitless

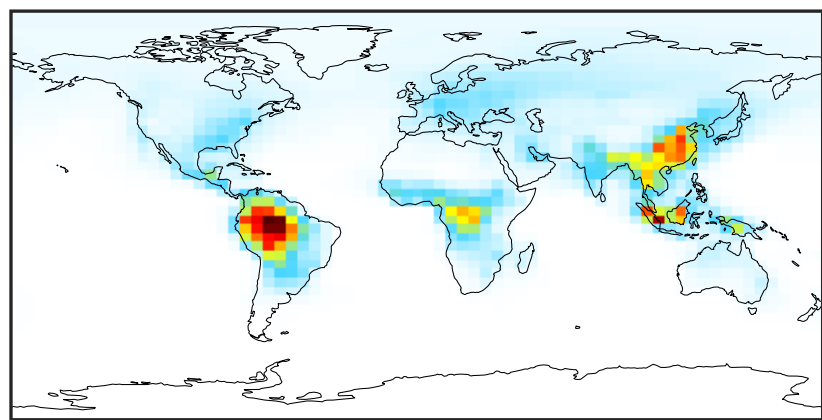
Ratio (1x1.25)
Dev/Ref, Fixed Range



0.50 0.75 1.00 1.50 2.00
unitless

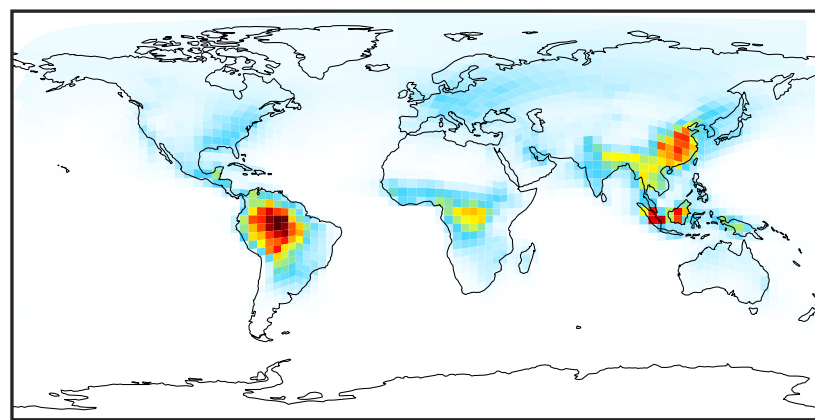
SpeciesConcVV_MEK (Oct2019)

14.3.0-rc.0 (Ref)
4.0x5.0



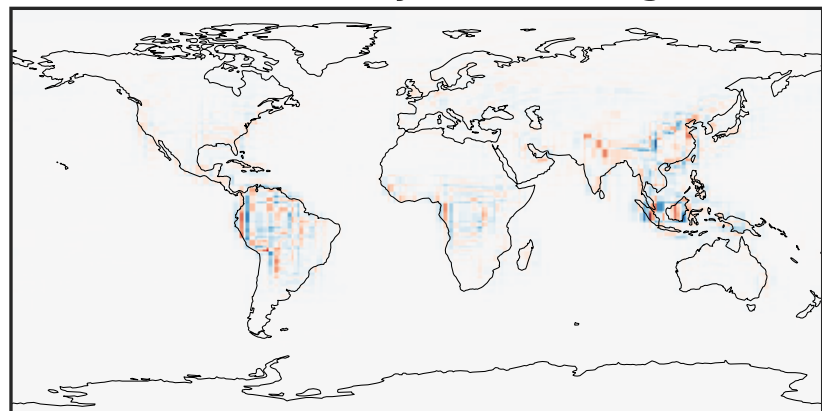
0.000 0.512 1.023 1.534 2.046
ppb

14.3.0-rc.0 (Dev)
c24



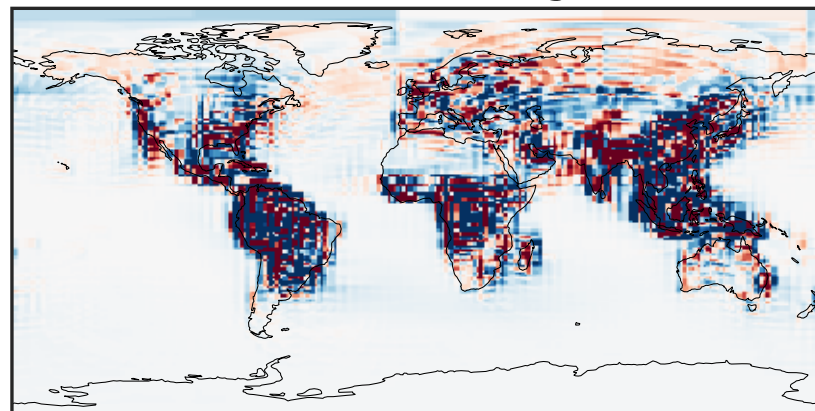
0.000 0.512 1.023 1.534 2.046
ppb

Difference (1x1.25)
Dev - Ref, Dynamic Range



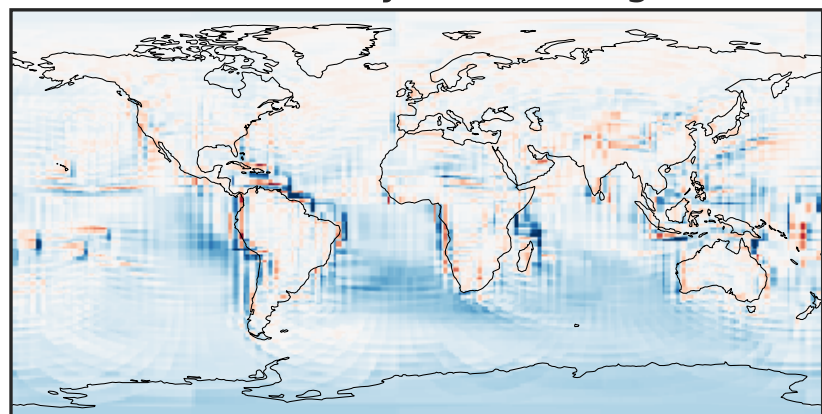
-0.786 -0.393 0.000 0.393 0.786
ppb

Difference (1x1.25)
Dev - Ref, Restricted Range [5%,95%]



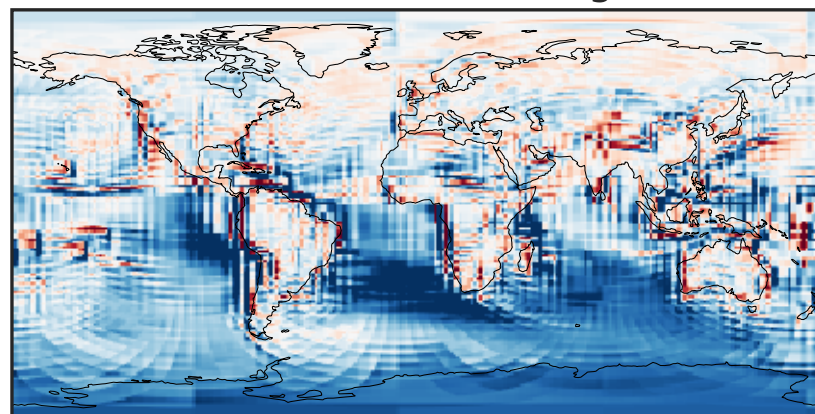
-0.02 0.00 0.02
ppb

Ratio (1x1.25)
Dev/Ref, Dynamic Range



0.149 0.574 1.000 3.857 6.713
unitless

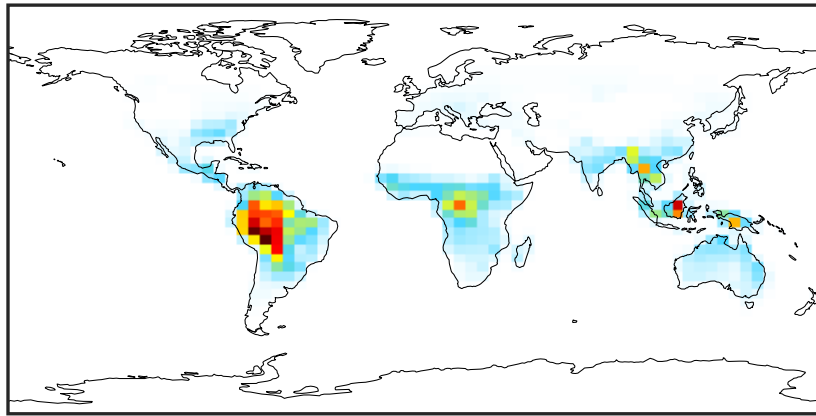
Ratio (1x1.25)
Dev/Ref, Fixed Range



0.50 0.75 1.00 1.50 2.00
unitless

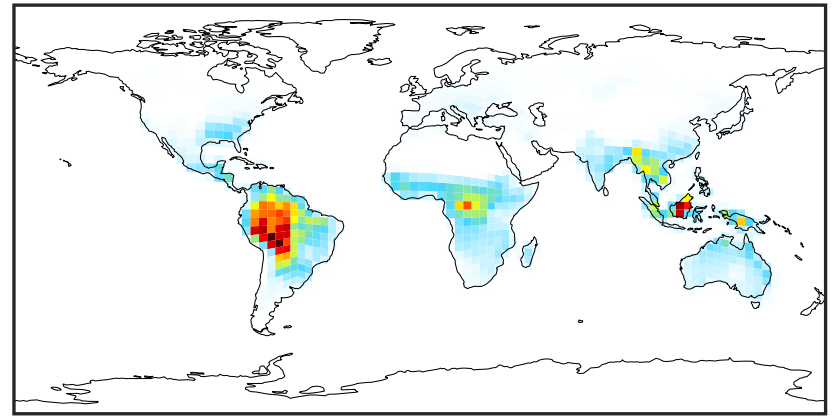
SpeciesConcVW_MVK (Oct2019)

14.3.0-rc.0 (Ref)
4.0x5.0



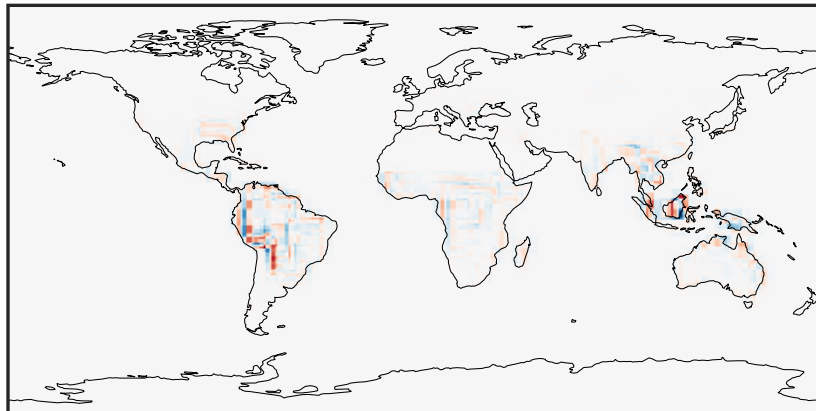
0.000 0.484 0.969 1.453 1.938
ppb

14.3.0-rc.0 (Dev)
c24



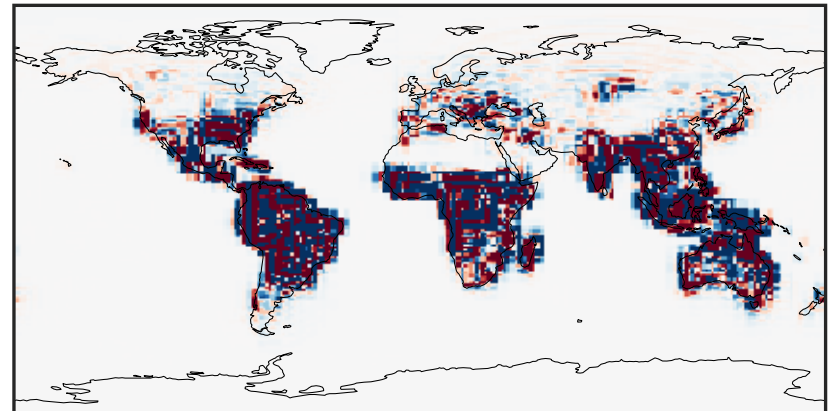
0.000 0.484 0.969 1.453 1.938
ppb

Difference (1x1.25)
Dev - Ref, Dynamic Range



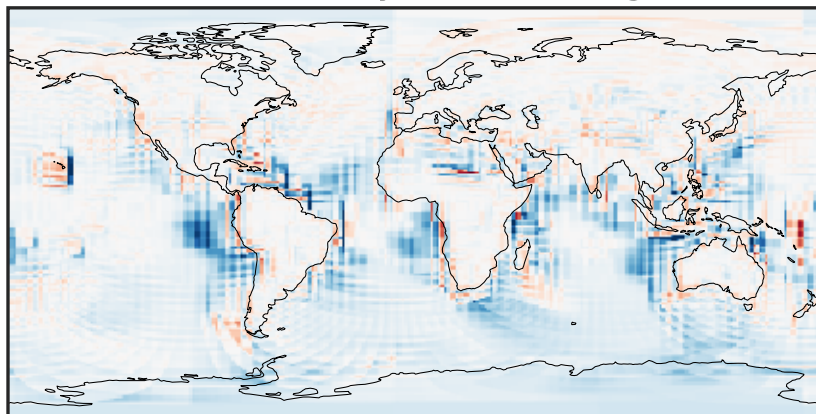
-0.915 -0.458 0.000 0.458 0.915
ppb

Difference (1x1.25)
Dev - Ref, Restricted Range [5%,95%]



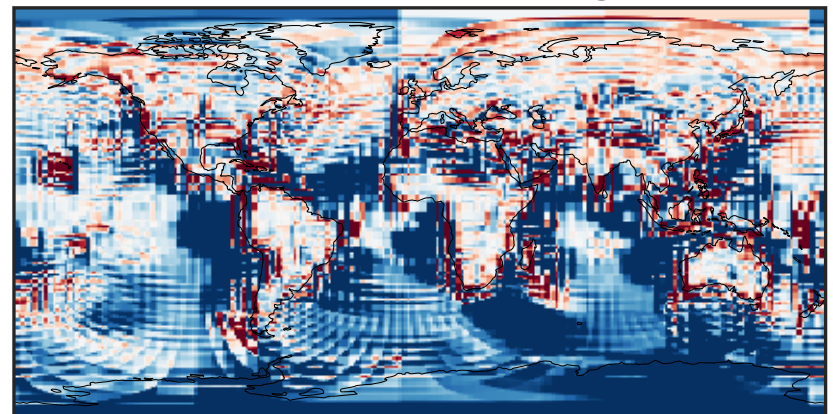
-0.008 0.000 0.008
ppb

Ratio (1x1.25)
Dev/Ref, Dynamic Range



1e-02 1e-01 1 10 100
unitless

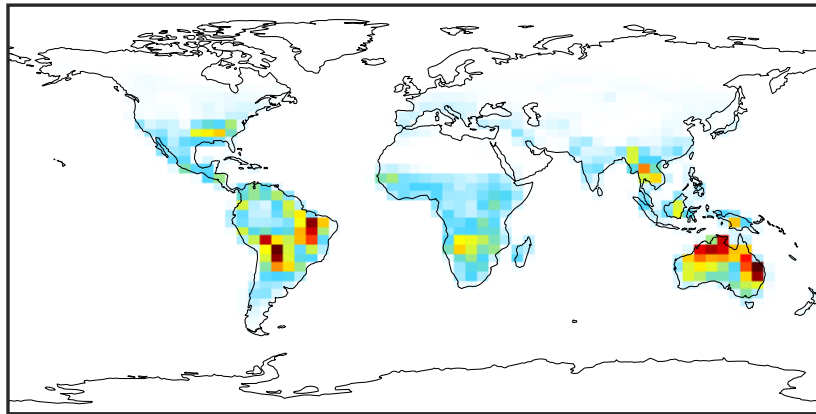
Ratio (1x1.25)
Dev/Ref, Fixed Range



0.50 0.75 1.00 1.50 2.00
unitless

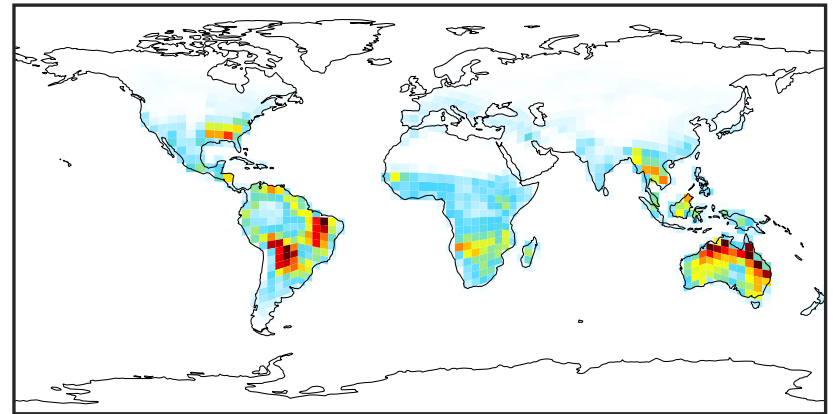
SpeciesConcVV_ISOPN (Oct2019)

14.3.0-rc.0 (Ref)
4.0x5.0



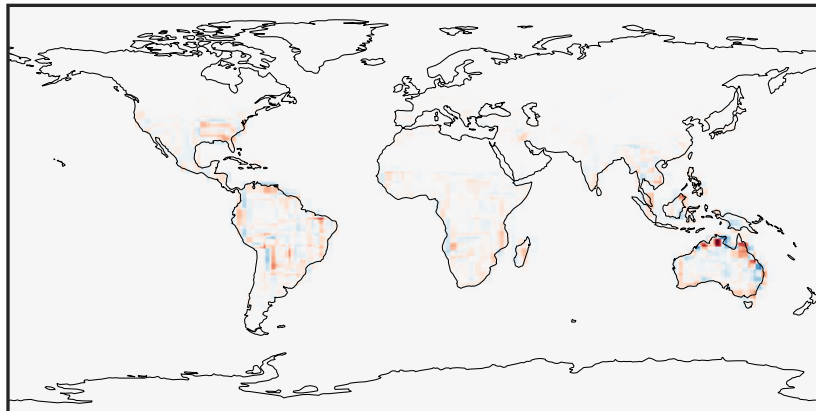
0.000 0.008 0.016 0.024
ppb

14.3.0-rc.0 (Dev)
c24



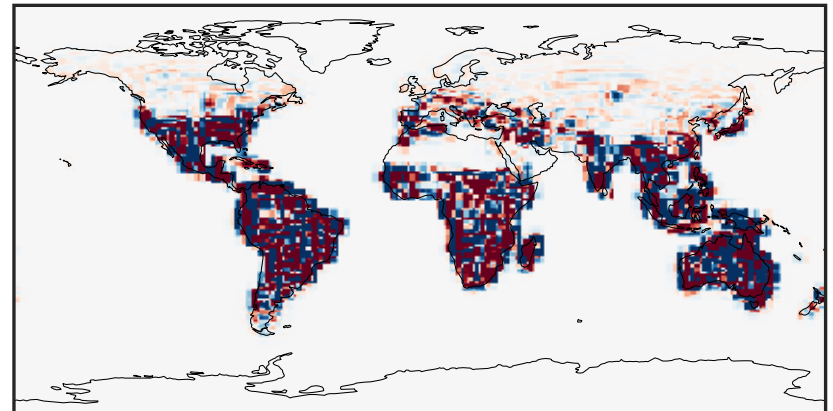
0.000 0.008 0.016 0.024
ppb

Difference (1x1.25)
Dev - Ref, Dynamic Range



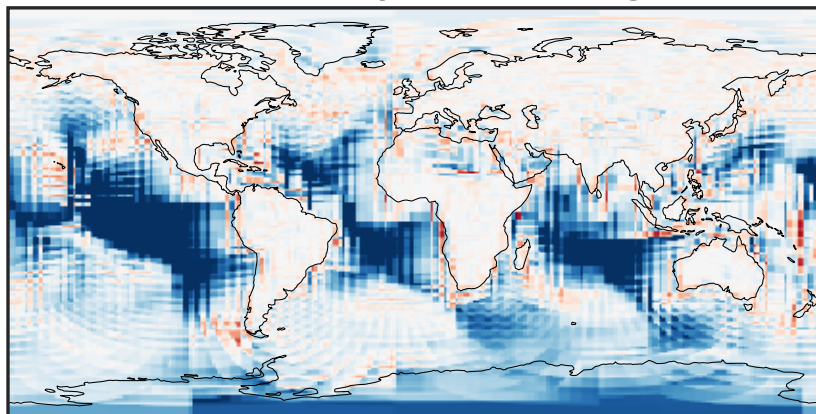
-0.015 0.000 0.015
ppb

Difference (1x1.25)
Dev - Ref, Restricted Range [5%,95%]



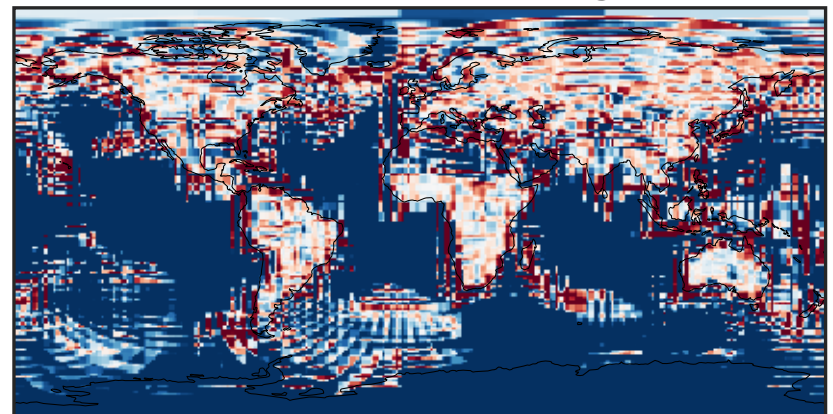
-0.0003 0.0000 0.0003
ppb

Ratio (1x1.25)
Dev/Ref, Dynamic Range



1e-02 1e-01 1 10 100
unitless

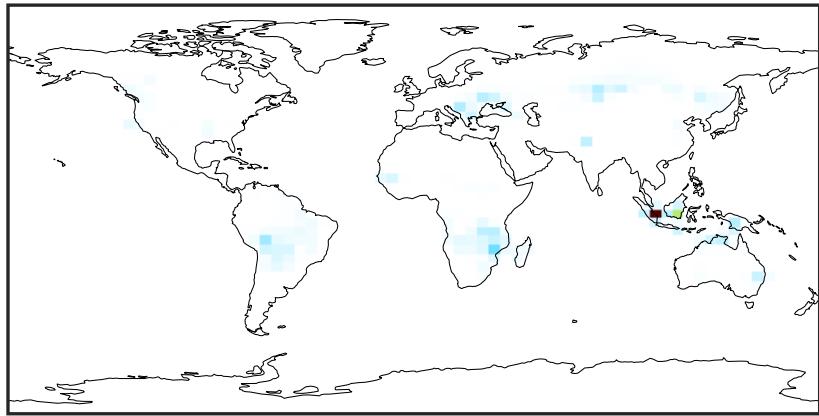
Ratio (1x1.25)
Dev/Ref, Fixed Range



0.50 0.75 1.00 1.50 2.00
unitless

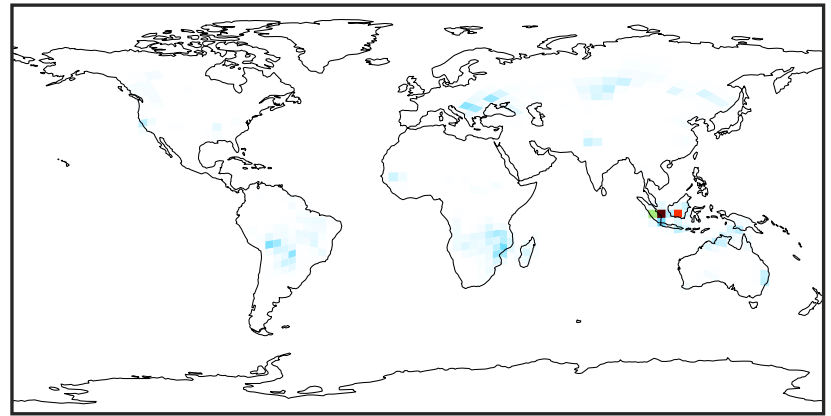
SpeciesConcVV_FURA (Oct2019)

14.3.0-rc.0 (Ref)
4.0x5.0



0.000 0.282 0.565 0.847 1.129
ppb

14.3.0-rc.0 (Dev)
c24



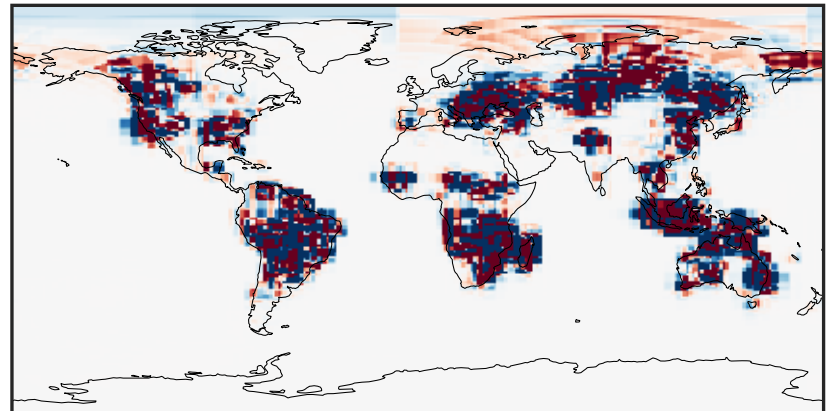
0.000 0.282 0.565 0.847 1.129
ppb

Difference (1x1.25)
Dev - Ref, Dynamic Range



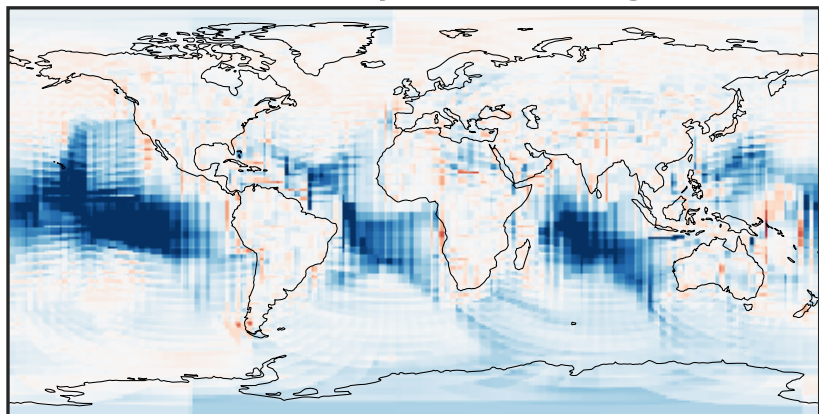
-0.6 -0.3 0.0 0.3 0.6
ppb

Difference (1x1.25)
Dev - Ref, Restricted Range [5%,95%]



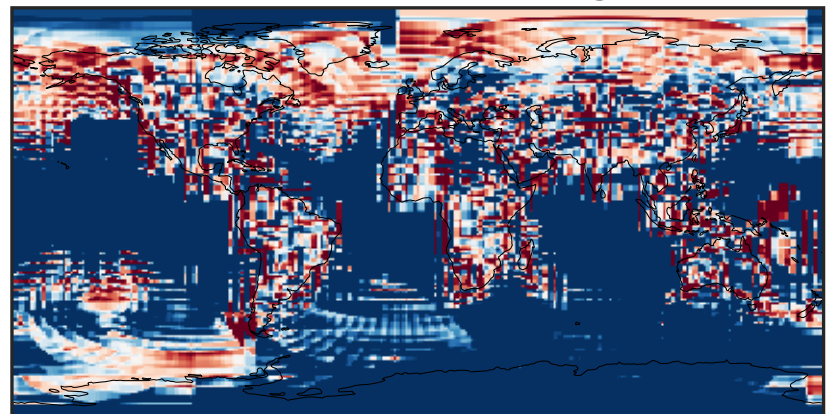
-0.0006 0.0000 0.0006
ppb

Ratio (1x1.25)
Dev/Ref, Dynamic Range



1e-03 1e-02 1e-01 1 10 100 1000
unitless

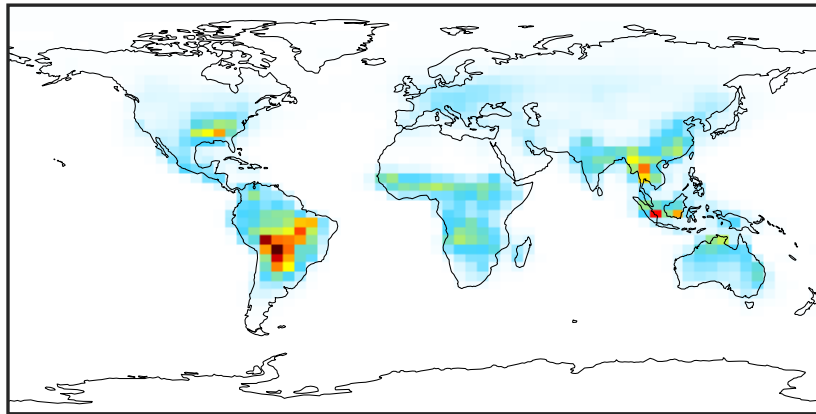
Ratio (1x1.25)
Dev/Ref, Fixed Range



0.50 0.75 1.00 1.50 2.00
unitless

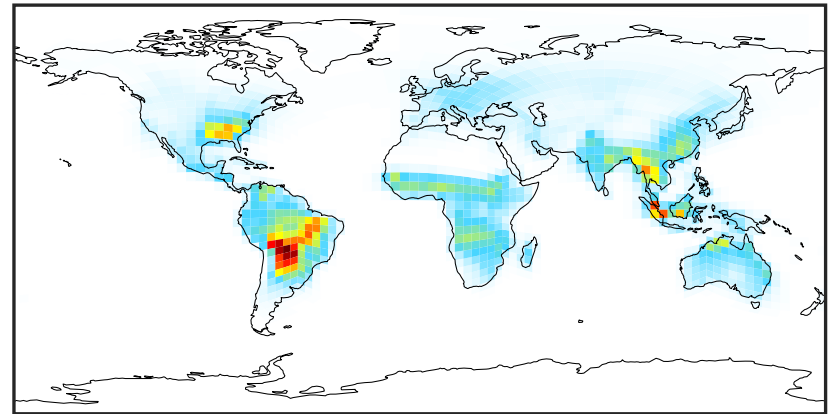
SpeciesConcVV_GLYC (Oct2019)

14.3.0-rc.0 (Ref)
4.0x5.0



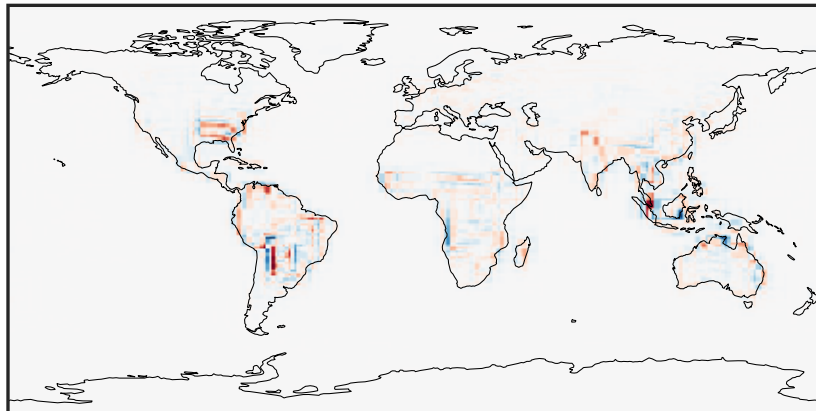
0.0000 0.2307 0.4614 0.6921 0.9228
ppb

14.3.0-rc.0 (Dev)
c24



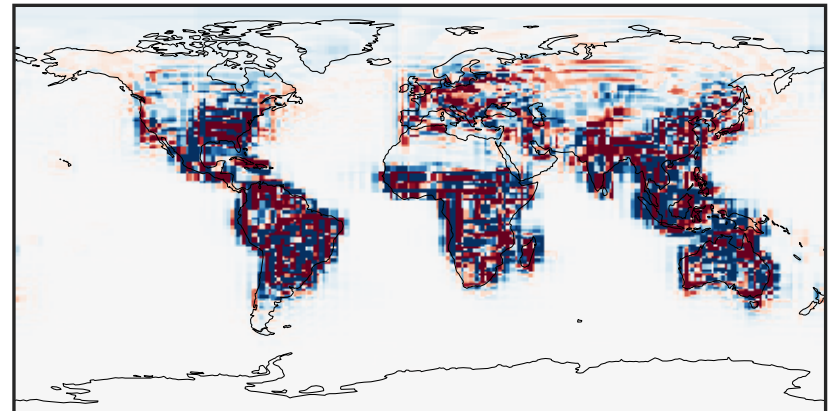
0.0000 0.2307 0.4614 0.6921 0.9228
ppb

Difference (1x1.25)
Dev - Ref, Dynamic Range



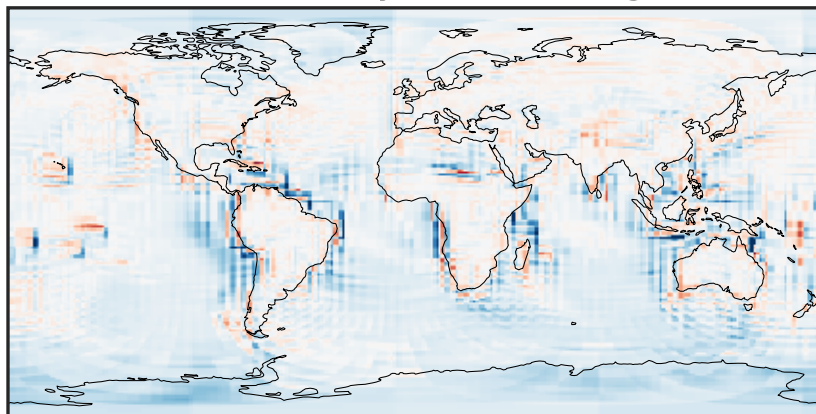
-0.3338 -0.1669 0.0000 0.1669 0.3338
ppb

Difference (1x1.25)
Dev - Ref, Restricted Range [5%,95%]



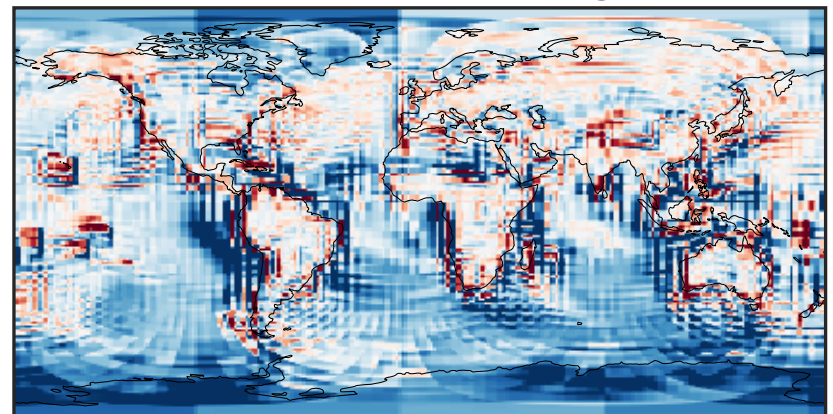
-0.008 0.000 0.008
ppb

Ratio (1x1.25)
Dev/Ref, Dynamic Range



1e-01 1 10
unitless

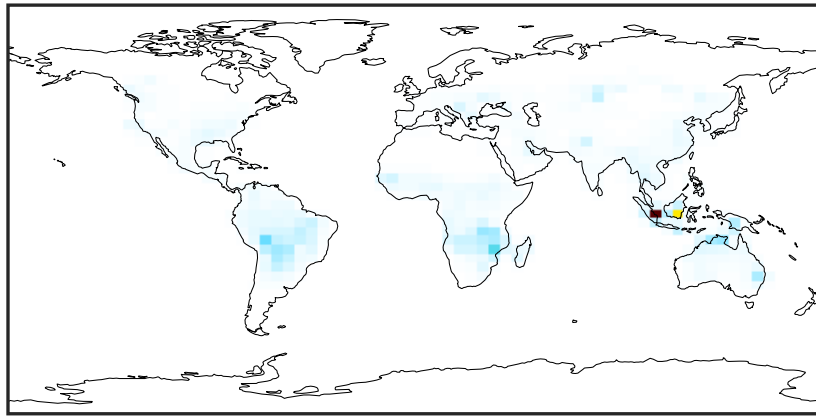
Ratio (1x1.25)
Dev/Ref, Fixed Range



0.50 0.75 1.00 1.50 2.00
unitless

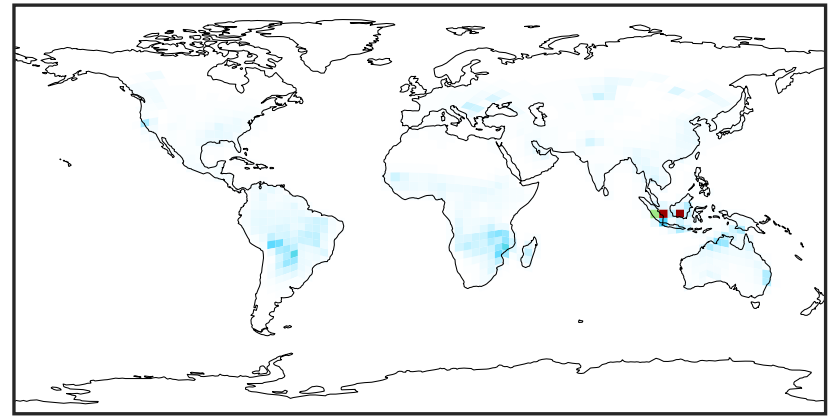
SpeciesConcVV_GLYX (Oct2019)

14.3.0-rc.0 (Ref)
4.0x5.0



0.0000 0.1669 0.3339 0.5008 0.6677
ppb

14.3.0-rc.0 (Dev)
c24



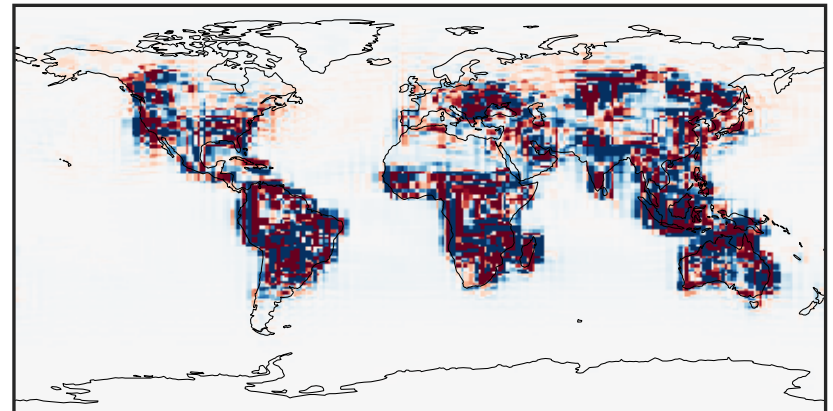
0.0000 0.1669 0.3339 0.5008 0.6677
ppb

Difference (1x1.25)
Dev - Ref, Dynamic Range



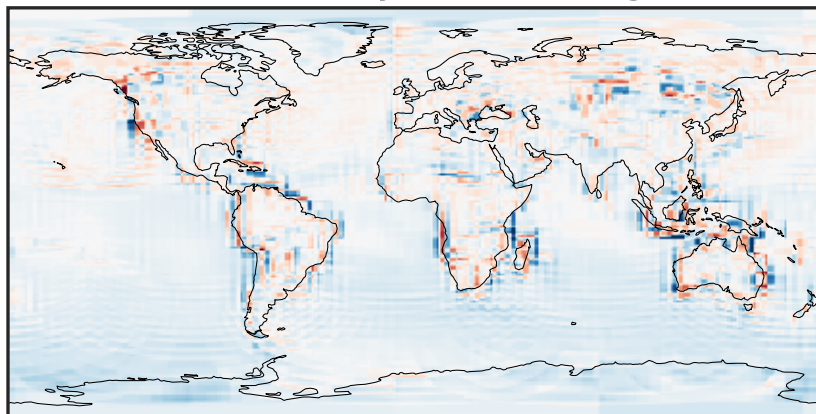
-0.3972 -0.1986 0.0000 0.1986 0.3972
ppb

Difference (1x1.25)
Dev - Ref, Restricted Range [5%,95%]



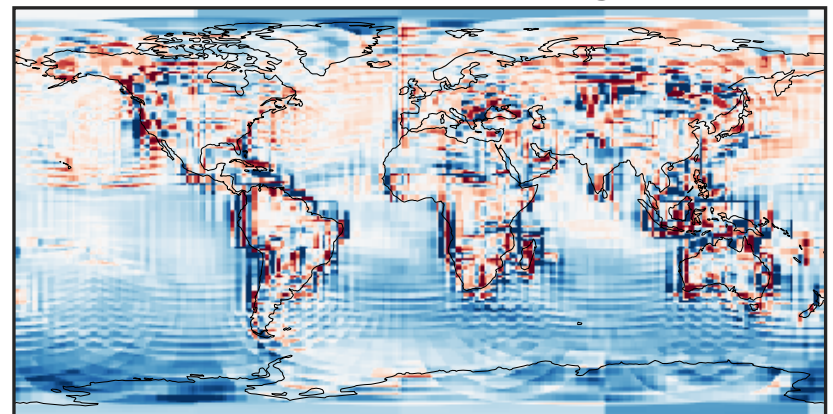
-0.0008 0.0000 0.0008
ppb

Ratio (1x1.25)
Dev/Ref, Dynamic Range



0.109 0.554 1.000 5.107 9.213
unitless

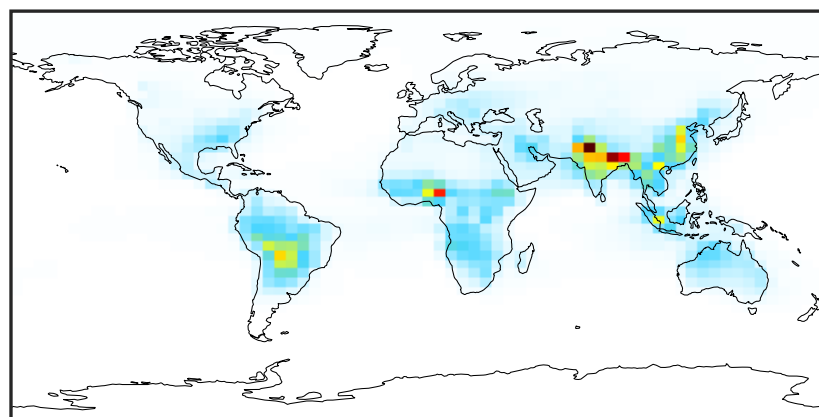
Ratio (1x1.25)
Dev/Ref, Fixed Range



0.50 0.75 1.00 1.50 2.00
unitless

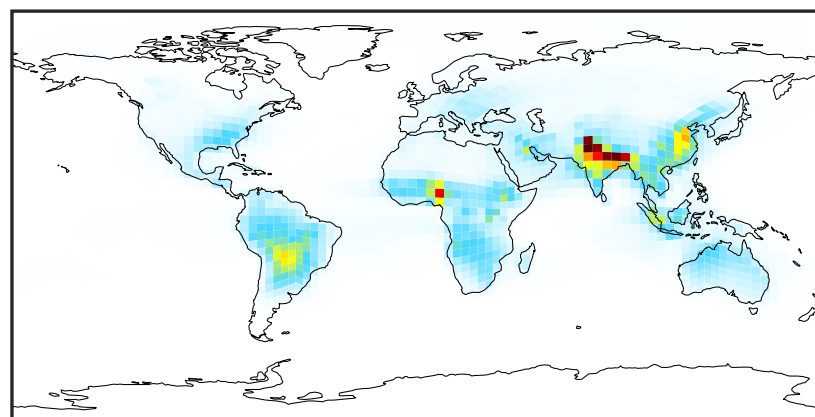
SpeciesConcVV_HCOOH (Oct2019)

14.3.0-rc.0 (Ref)
4.0x5.0



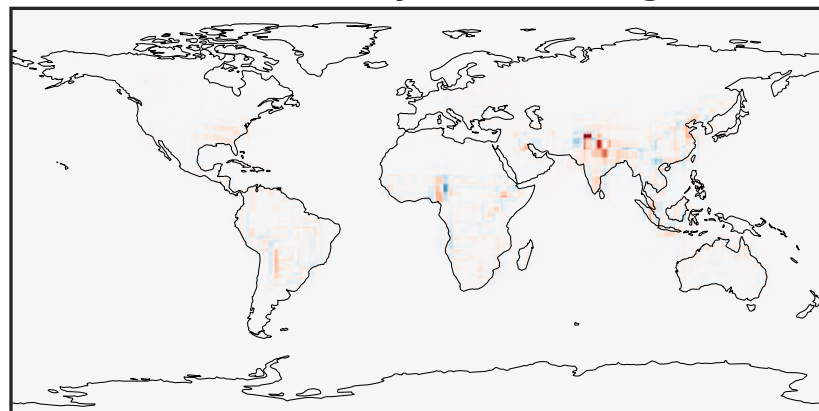
0.001 0.802 1.602 2.403 3.204
ppb

14.3.0-rc.0 (Dev)
c24



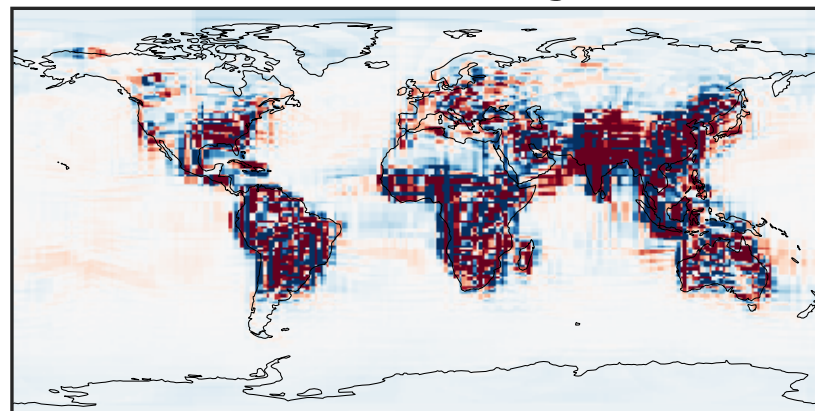
0.001 0.802 1.602 2.403 3.204
ppb

Difference (1x1.25)
Dev - Ref, Dynamic Range



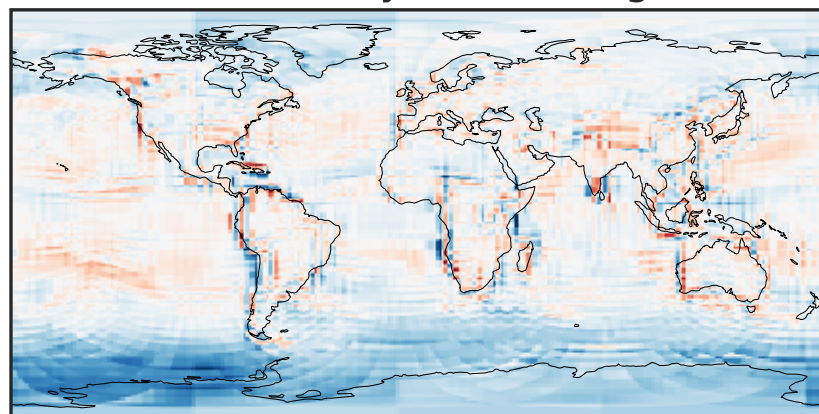
-2.072 -1.036 0.000 1.036 2.072
ppb

Difference (1x1.25)
Dev - Ref, Restricted Range [5%,95%]



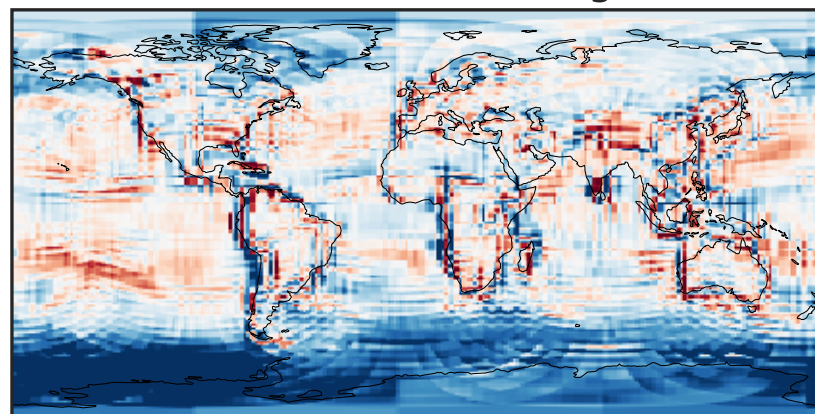
-0.02 0.00 0.02
ppb

Ratio (1x1.25)
Dev/Ref, Dynamic Range



0.210 0.605 1.000 2.880 4.760
unitless

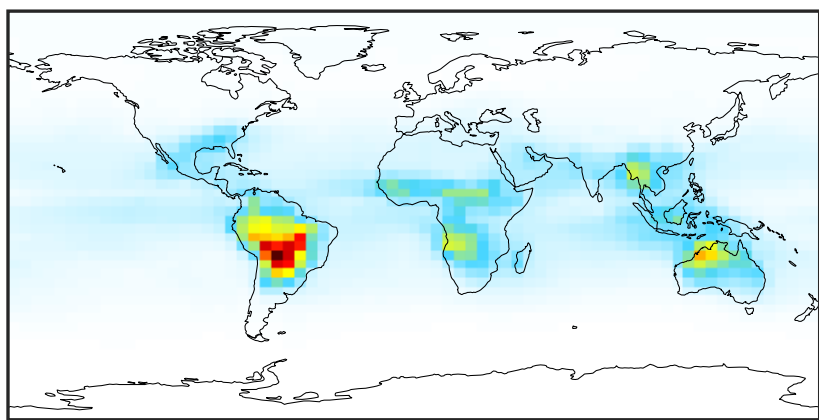
Ratio (1x1.25)
Dev/Ref, Fixed Range



0.50 0.75 1.00 1.50 2.00
unitless

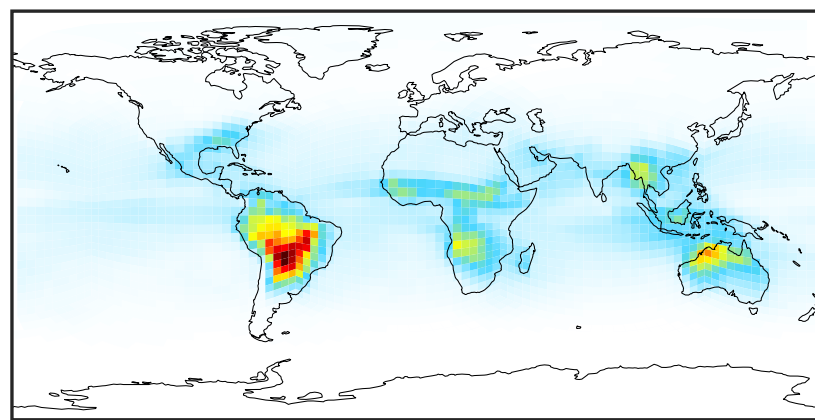
SpeciesConcVV_MAP (Oct2019)

14.3.0-rc.0 (Ref)
4.0x5.0



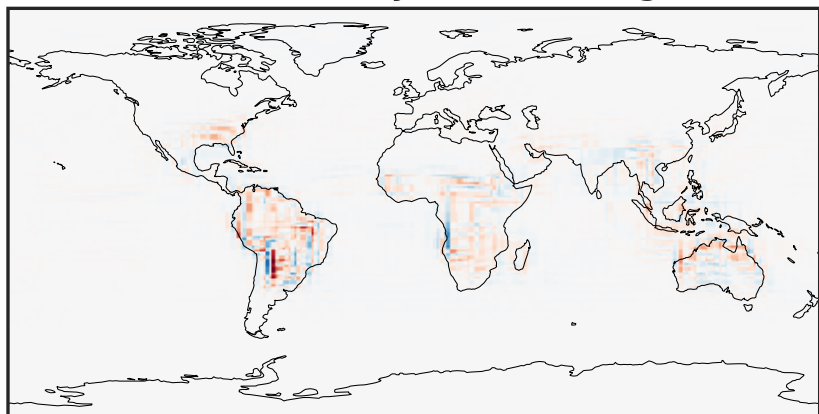
0.002 0.300 0.598 0.896 1.194
ppb

14.3.0-rc.0 (Dev)
c24



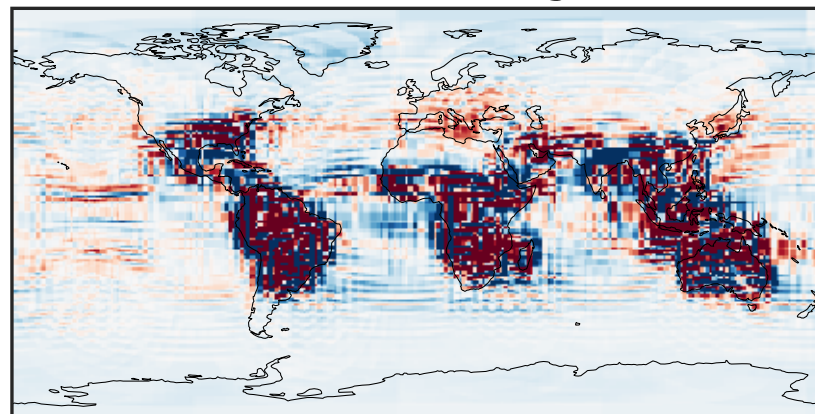
0.002 0.300 0.598 0.896 1.194
ppb

Difference (1x1.25)
Dev - Ref, Dynamic Range



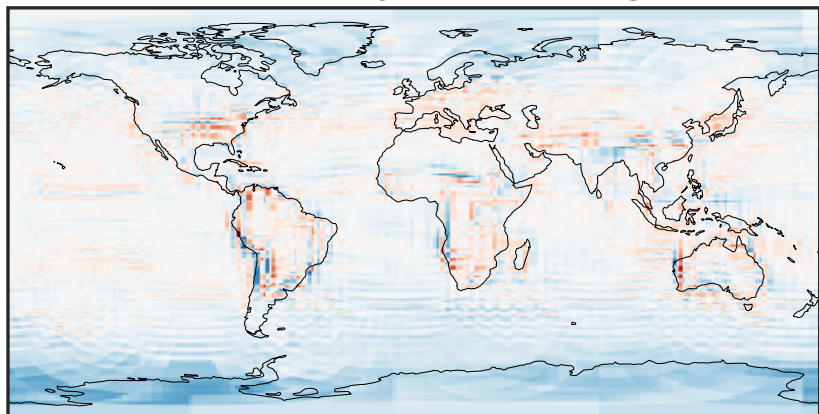
-0.36 -0.18 0.00 0.18 0.36
ppb

Difference (1x1.25)
Dev - Ref, Restricted Range [5%,95%]



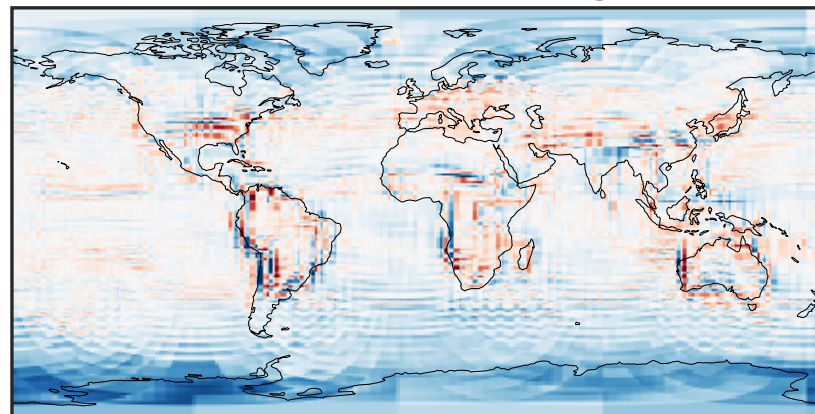
-0.008 0.000 0.008
ppb

Ratio (1x1.25)
Dev/Ref, Dynamic Range



0.320 0.660 1.000 2.063 3.126
unitless

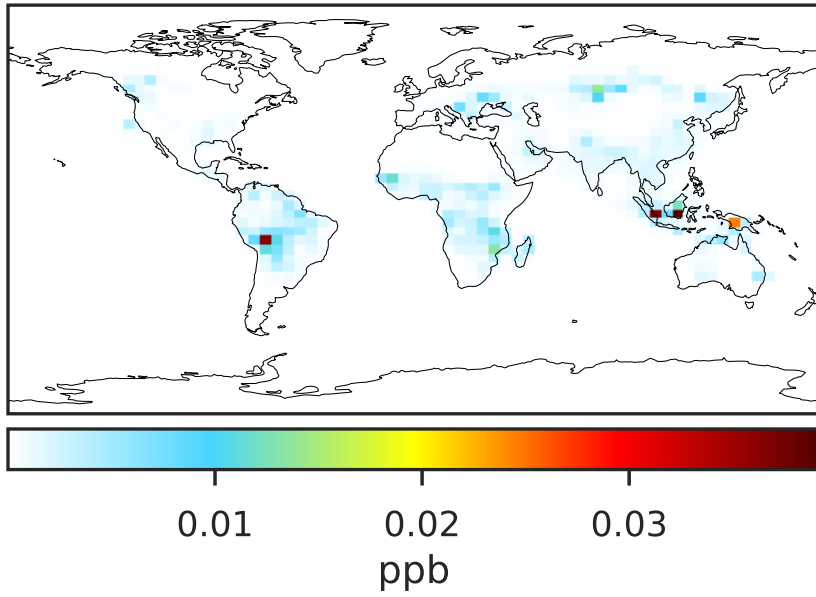
Ratio (1x1.25)
Dev/Ref, Fixed Range



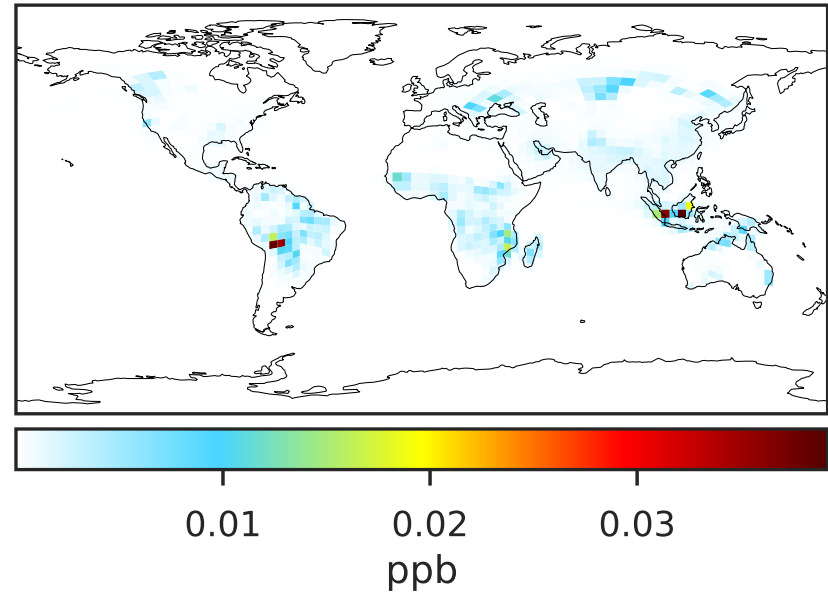
0.50 0.75 1.00 1.50 2.00
unitless

SpeciesConcVV_PHEN (Oct2019)

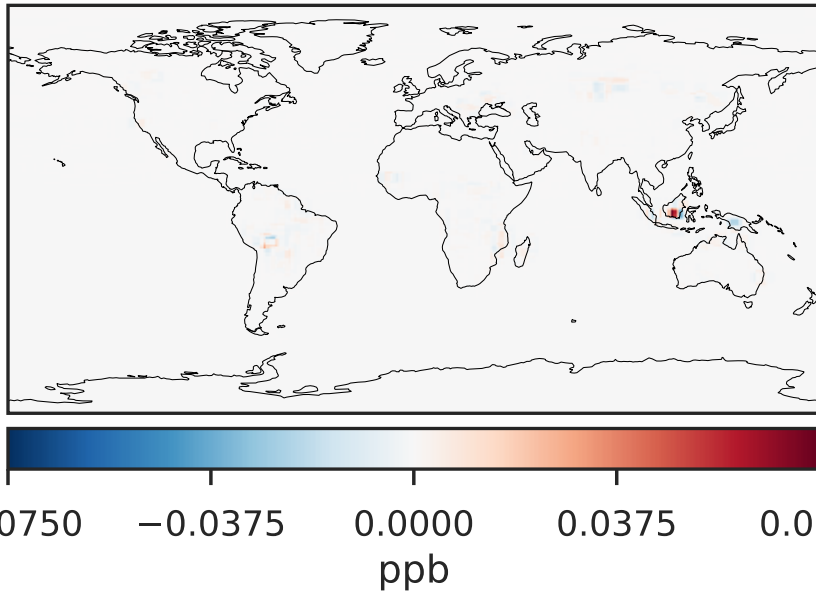
14.3.0-rc.0 (Ref)
4.0x5.0



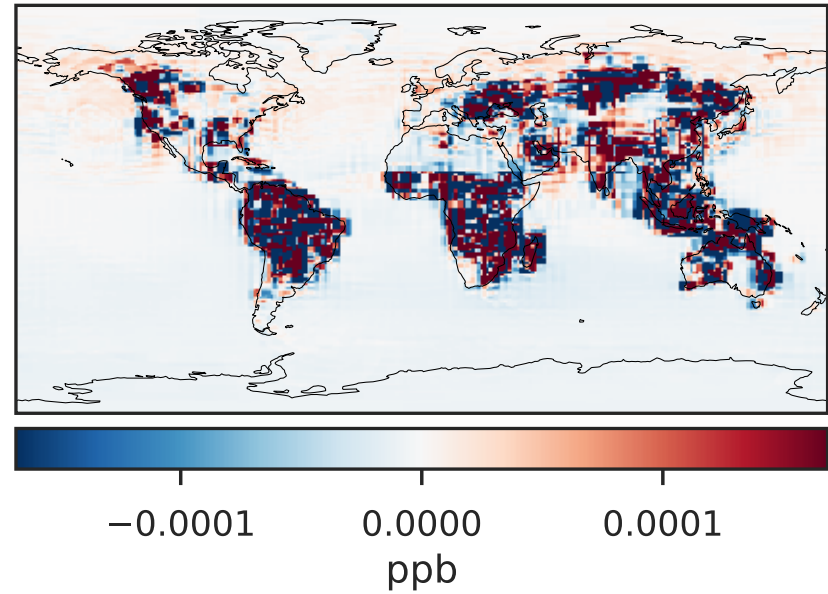
14.3.0-rc.0 (Dev)
c24



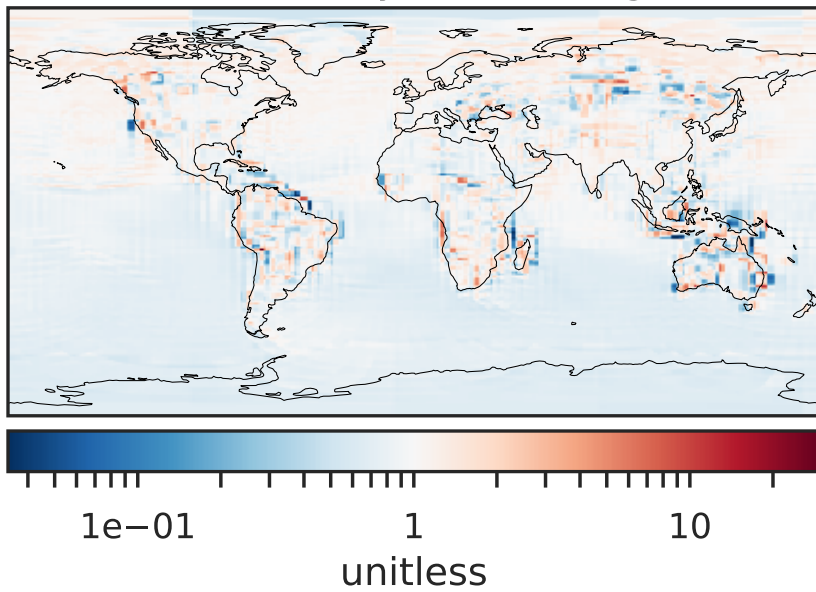
Difference (1x1.25)
Dev - Ref, Dynamic Range



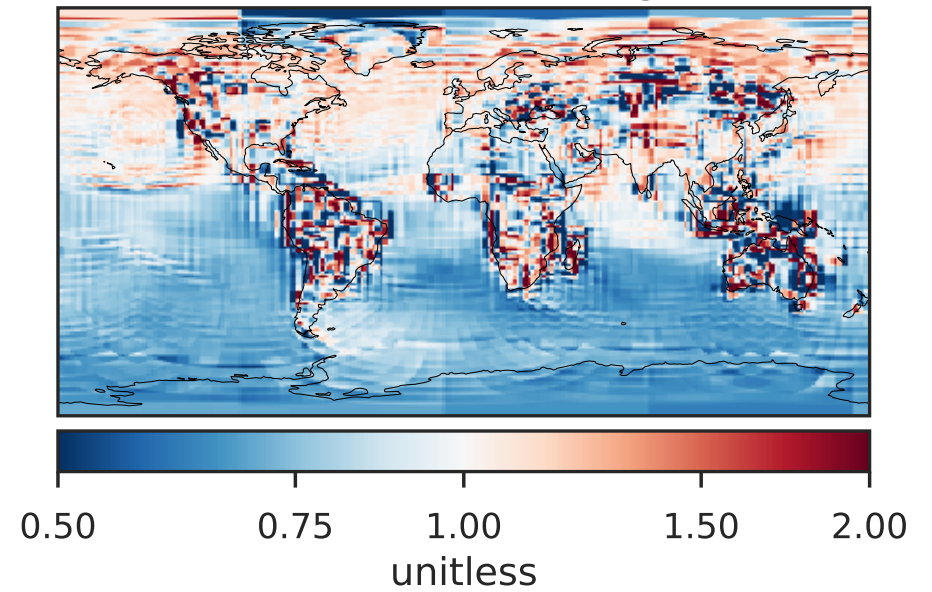
Difference (1x1.25)
Dev - Ref, Restricted Range [5%,95%]



Ratio (1x1.25)
Dev/Ref, Dynamic Range

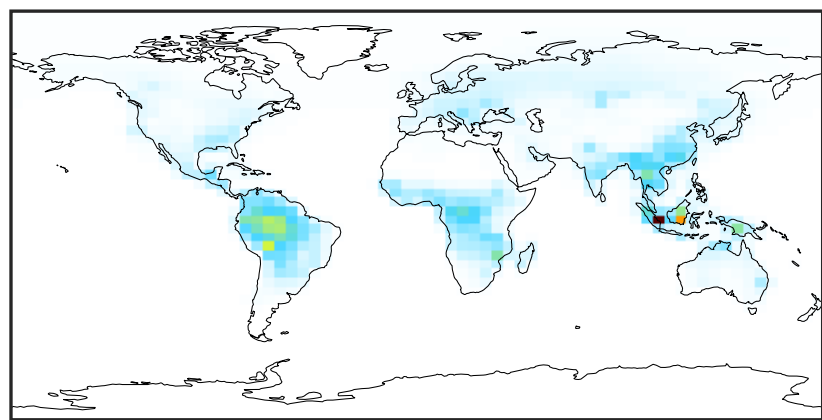


Ratio (1x1.25)
Dev/Ref, Fixed Range



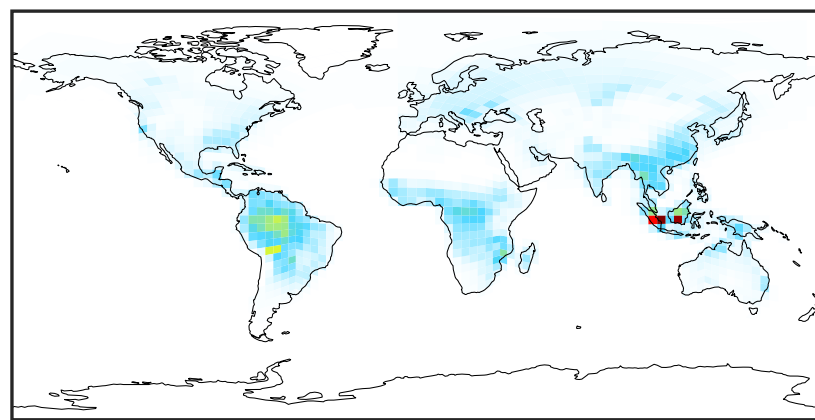
SpeciesConcVV_RCHO (Oct2019)

14.3.0-rc.0 (Ref)
4.0x5.0



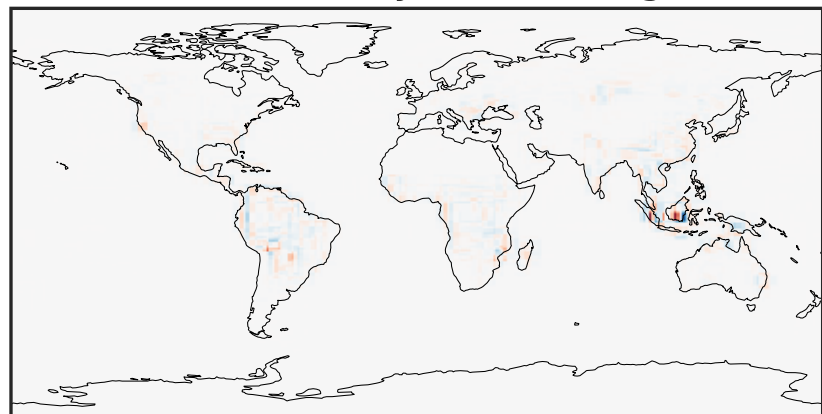
0.000 0.602 1.204 1.806 2.407
ppb

14.3.0-rc.0 (Dev)
c24



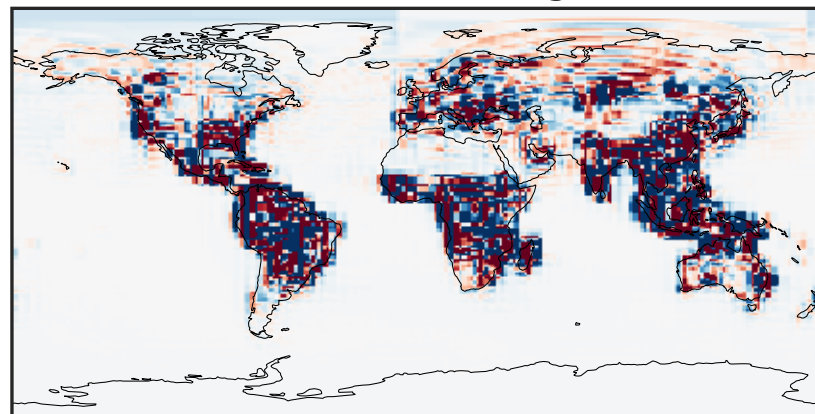
0.000 0.602 1.204 1.806 2.407
ppb

Difference (1x1.25)
Dev - Ref, Dynamic Range



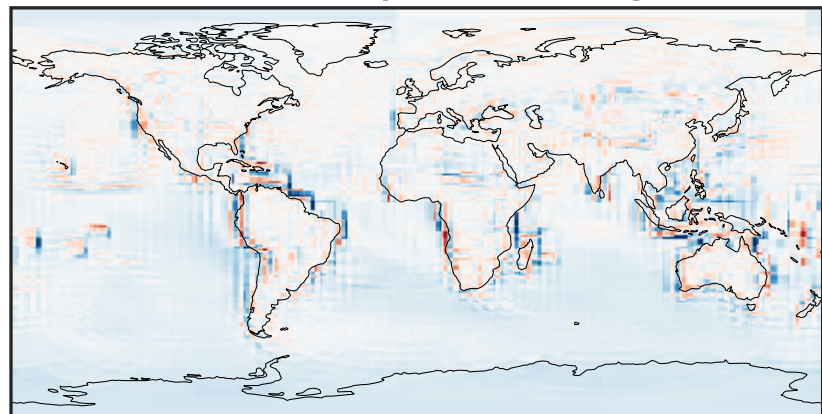
-1.278 -0.639 0.000 0.639 1.278
ppb

Difference (1x1.25)
Dev - Ref, Restricted Range [5%,95%]



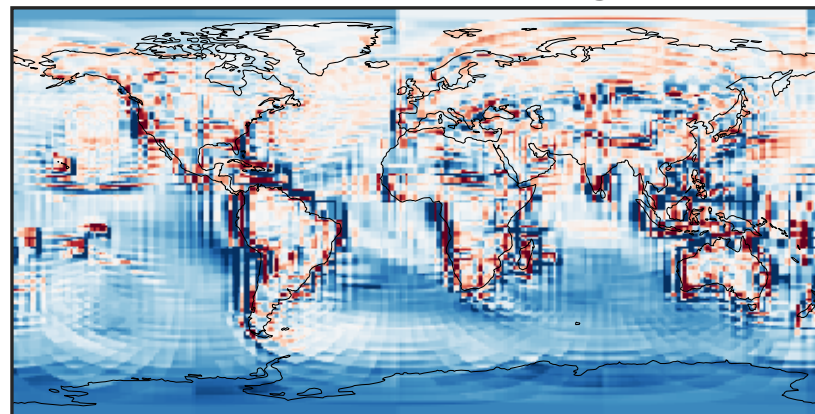
-0.01 0.00 0.01
ppb

Ratio (1x1.25)
Dev/Ref, Dynamic Range



1e-01 1 10
unitless

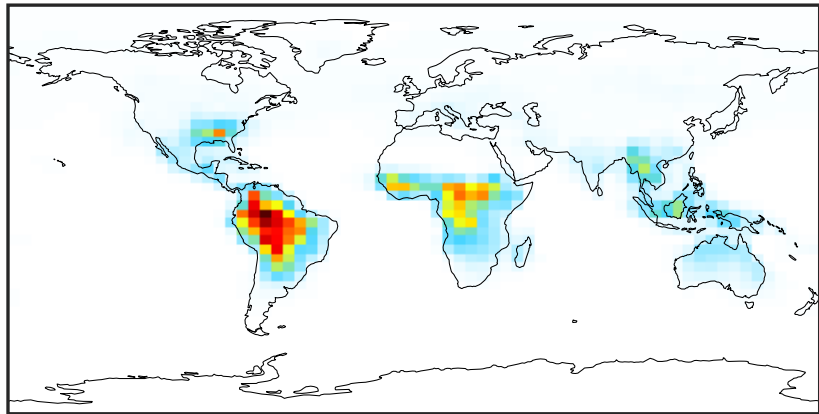
Ratio (1x1.25)
Dev/Ref, Fixed Range



0.50 0.75 1.00 1.50 2.00
unitless

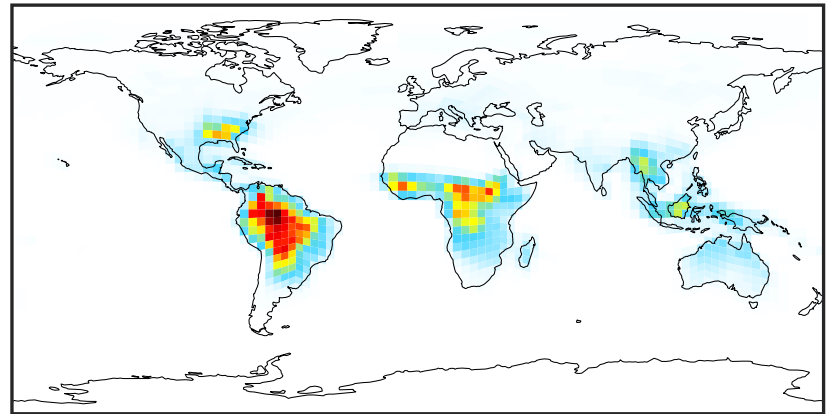
SpeciesConcVV_ETHP (Oct2019)

14.3.0-rc.0 (Ref)
4.0x5.0



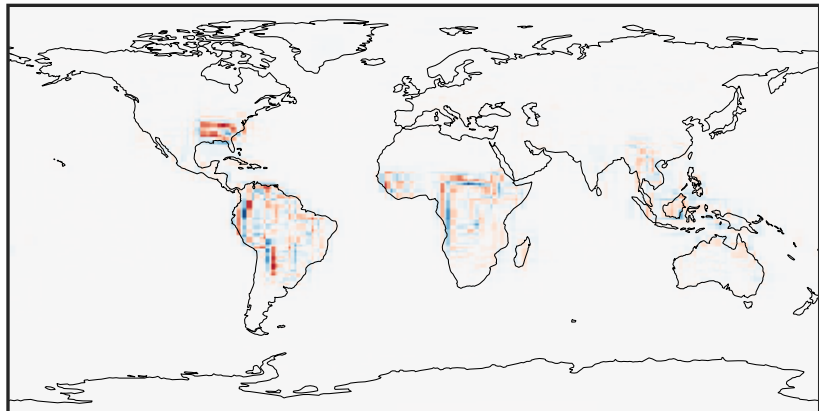
0.0000 0.0524 0.1048 0.1572 0.2096
ppb

14.3.0-rc.0 (Dev)
c24



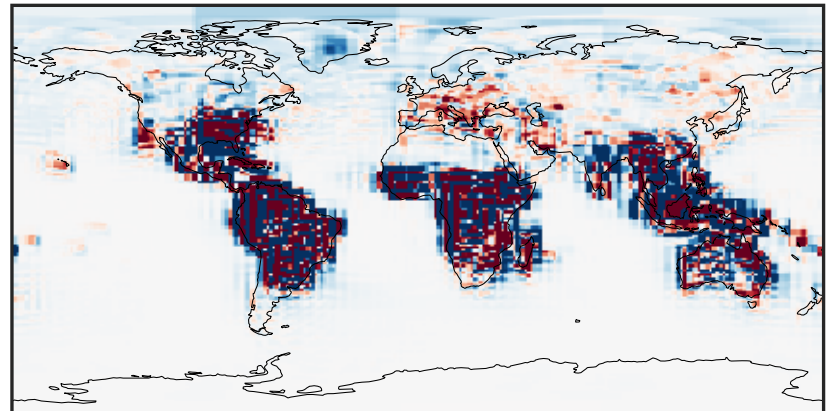
0.0000 0.0524 0.1048 0.1572 0.2096
ppb

Difference (1x1.25)
Dev - Ref, Dynamic Range



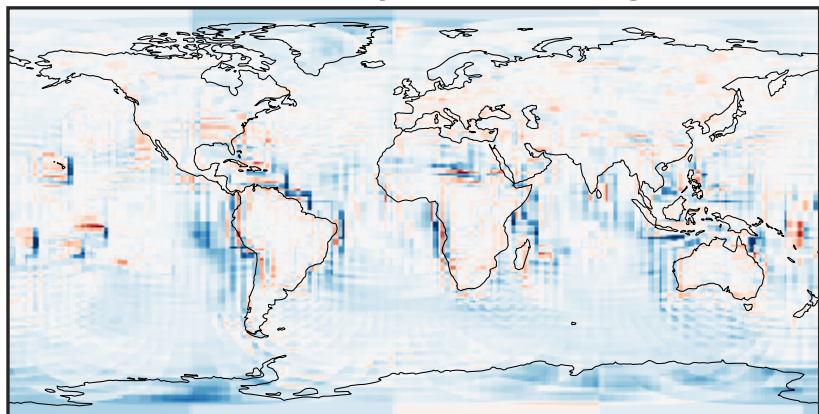
-0.0763 -0.0381 0.0000 0.0381 0.0763
ppb

Difference (1x1.25)
Dev - Ref, Restricted Range [5%,95%]



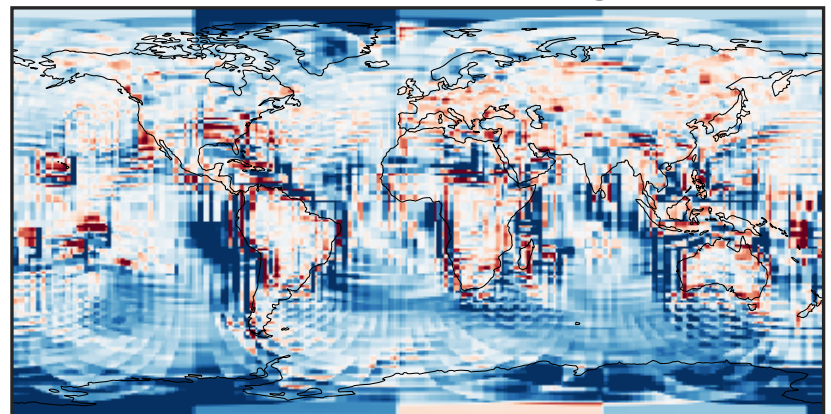
-0.001 0.000 0.001
ppb

Ratio (1x1.25)
Dev/Ref, Dynamic Range



1e-01 1 10
unitless

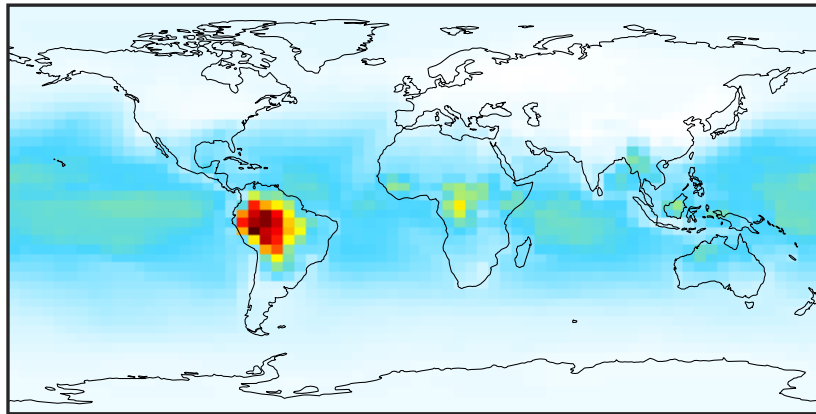
Ratio (1x1.25)
Dev/Ref, Fixed Range



0.50 0.75 1.00 1.50 2.00
unitless

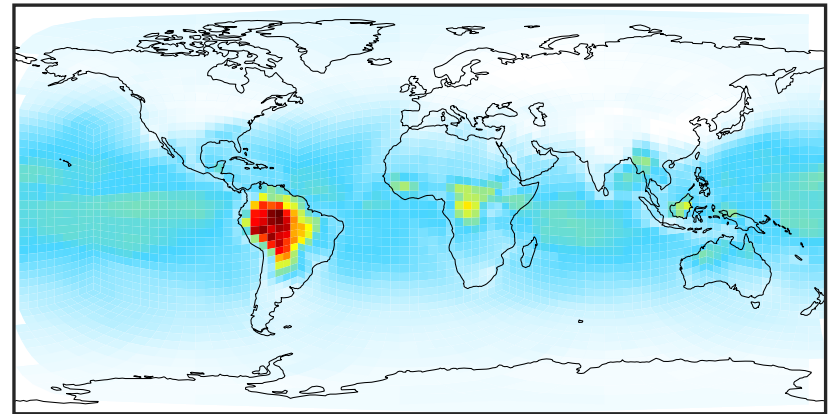
SpeciesConcVV_MP (Oct2019)

14.3.0-rc.0 (Ref)
4.0x5.0



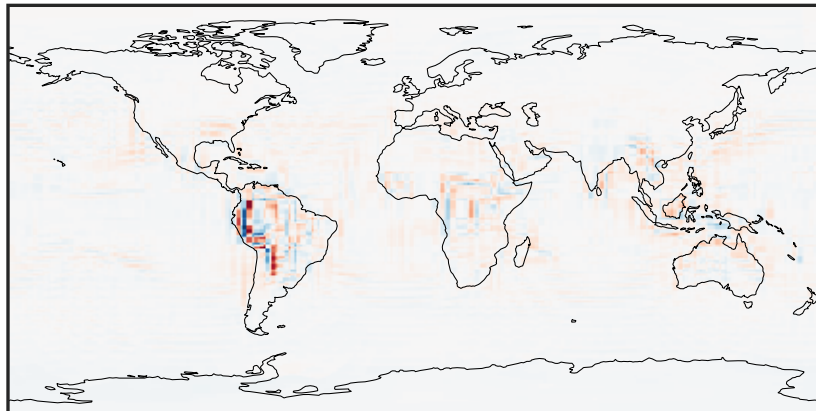
0.042 0.792 1.542 2.292 3.042
ppb

14.3.0-rc.0 (Dev)
c24



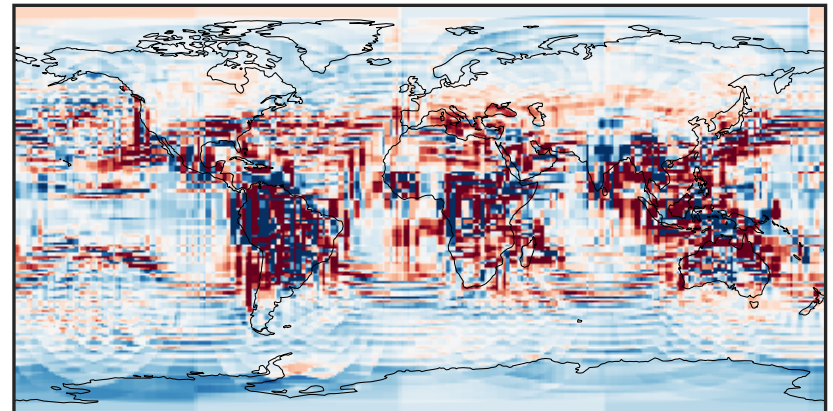
0.042 0.792 1.542 2.292 3.042
ppb

Difference (1x1.25)
Dev - Ref, Dynamic Range



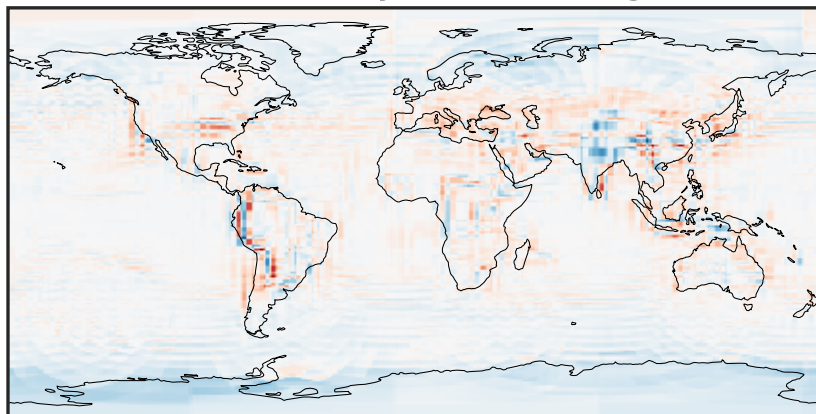
-0.895 -0.448 0.000 0.448 0.895
ppb

Difference (1x1.25)
Dev - Ref, Restricted Range [5%,95%]



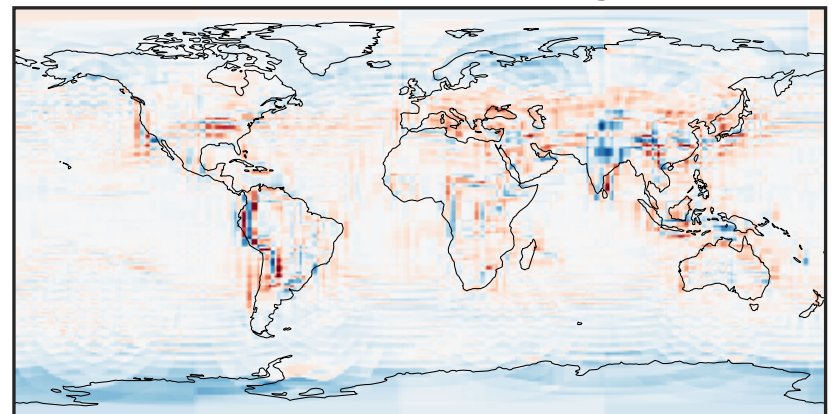
-0.0511 -0.0255 0.0000 0.0255 0.0511
ppb

Ratio (1x1.25)
Dev/Ref, Dynamic Range



0.370 0.685 1.000 1.852 2.705
unitless

Ratio (1x1.25)
Dev/Ref, Fixed Range



0.50 0.75 1.00 1.50 2.00
unitless