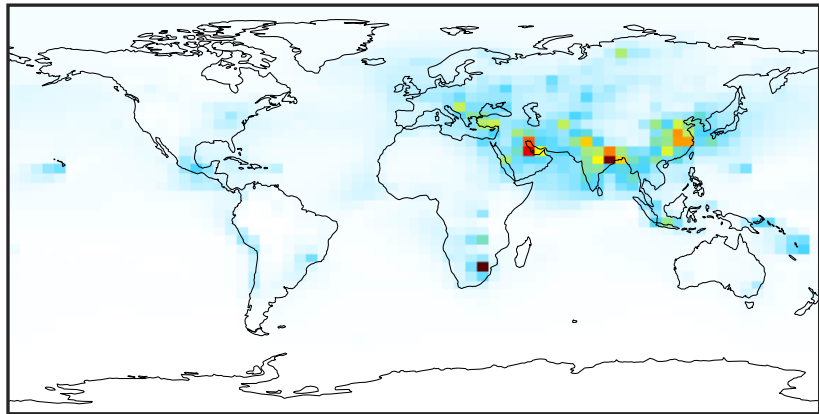


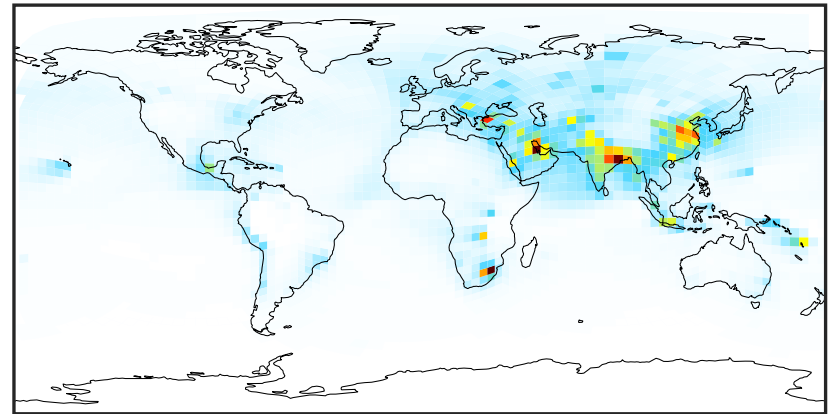
SpeciesConcVV_SOx (Apr2019)

14.3.0-rc.0 (Ref)
4.0x5.0



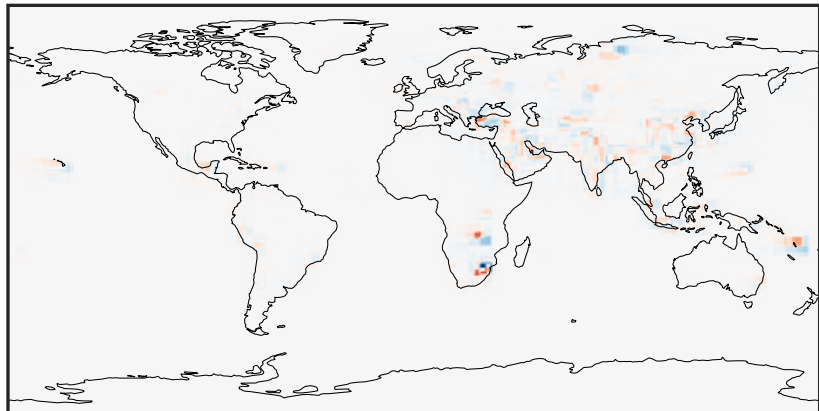
0.02 2.76 5.51 8.25 11.00
ppb

14.3.0-rc.0 (Dev)
c24



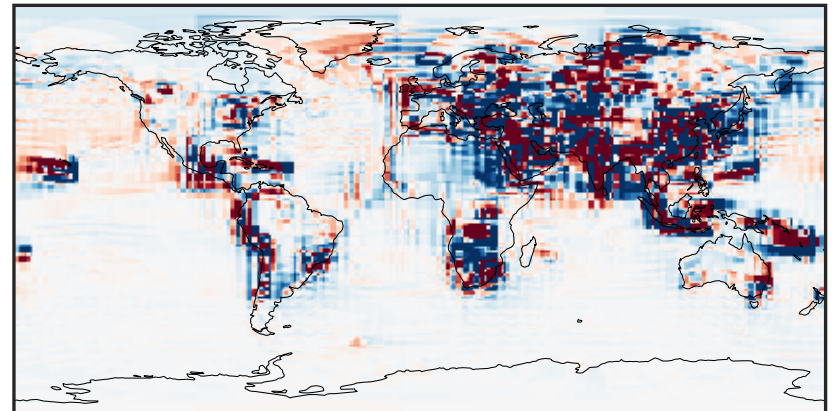
0.02 2.76 5.51 8.25 11.00
ppb

Difference (1x1.25)
Dev - Ref, Dynamic Range



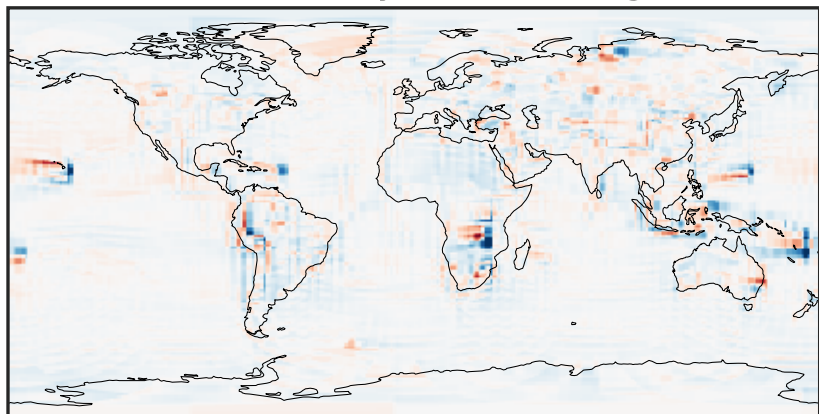
-8.47 -4.24 0.00 4.24 8.47
ppb

Difference (1x1.25)
Dev - Ref, Restricted Range [5%,95%]



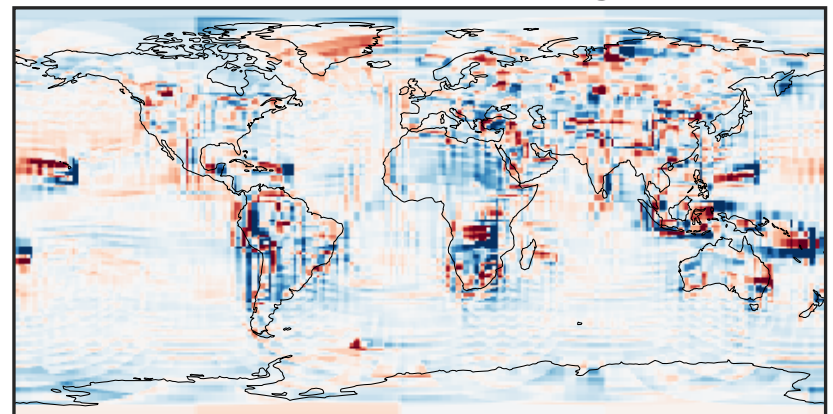
-0.1659 -0.0829 0.0000 0.0829 0.1659
ppb

Ratio (1x1.25)
Dev/Ref, Dynamic Range



0.102 0.551 1.000 5.379 9.758
unitless

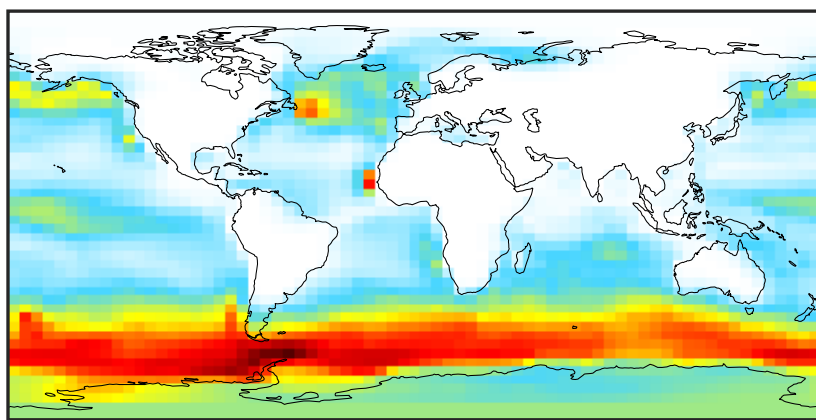
Ratio (1x1.25)
Dev/Ref, Fixed Range



0.50 0.75 1.00 1.50 2.00
unitless

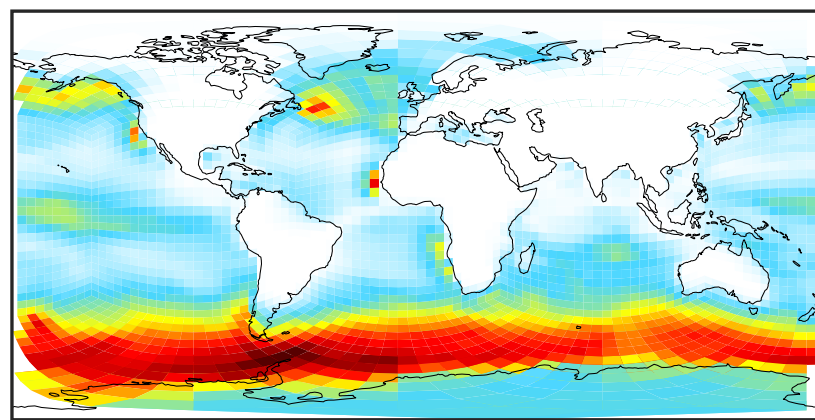
SpeciesConcVV_DMS (Apr2019)

14.3.0-rc.0 (Ref)
4.0x5.0



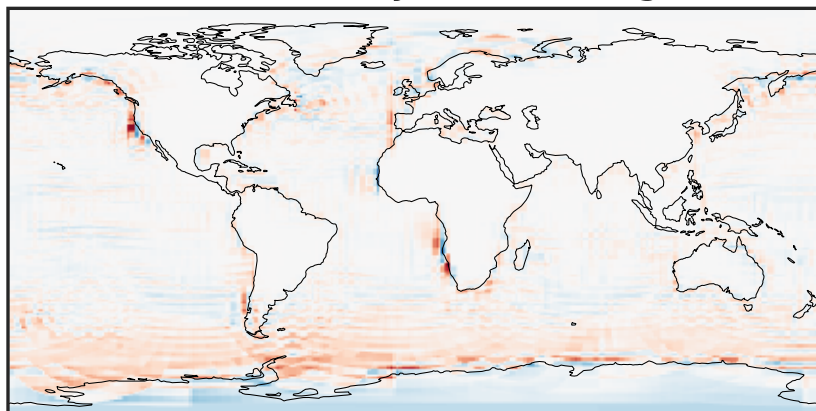
0.0000 0.0940 0.1881 0.2821 0.3761
ppb

14.3.0-rc.0 (Dev)
c24



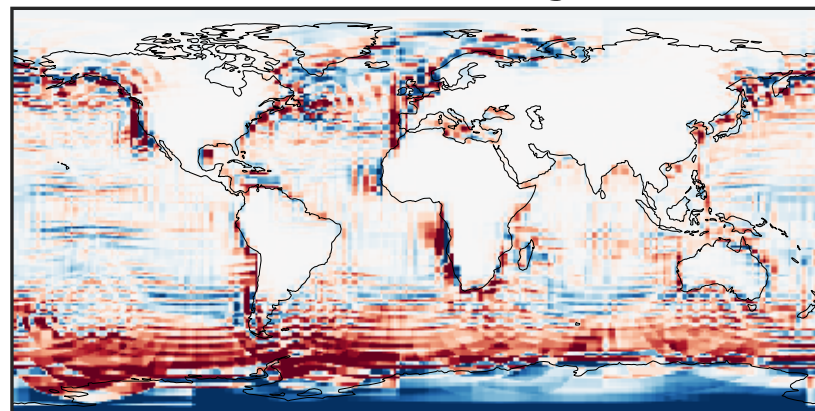
0.0000 0.0940 0.1881 0.2821 0.3761
ppb

Difference (1x1.25)
Dev - Ref, Dynamic Range



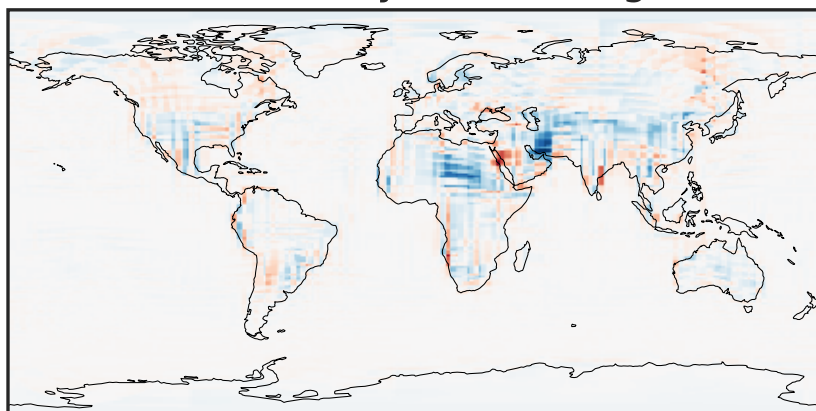
-0.1457 -0.0729 0.0000 0.0729 0.1457
ppb

Difference (1x1.25)
Dev - Ref, Restricted Range [5%,95%]



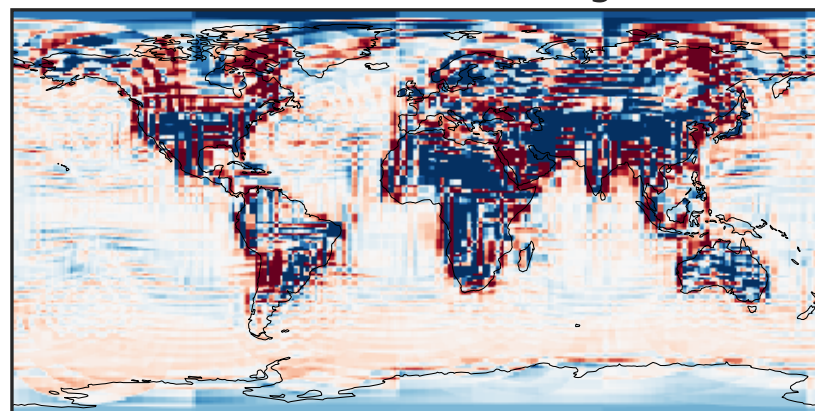
-0.015 0.000 0.015
ppb

Ratio (1x1.25)
Dev/Ref, Dynamic Range



1e-03 1e-02 1e-01 1 10 100 1000
unitless

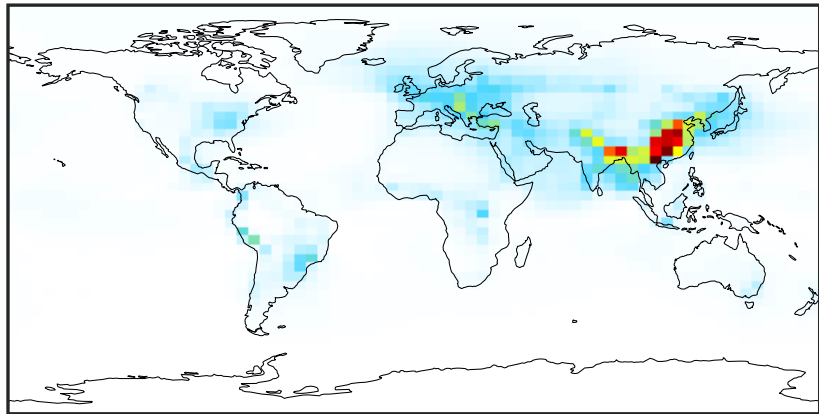
Ratio (1x1.25)
Dev/Ref, Fixed Range



0.50 0.75 1.00 1.50 2.00
unitless

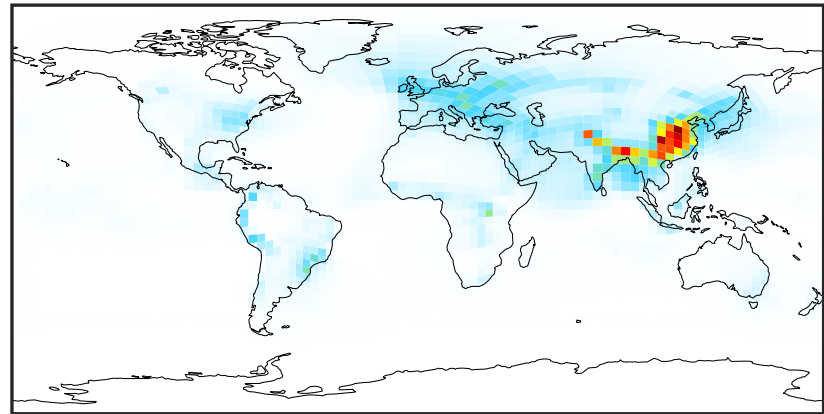
SpeciesConcVV_HMS (Apr2019)

14.3.0-rc.0 (Ref)
4.0x5.0



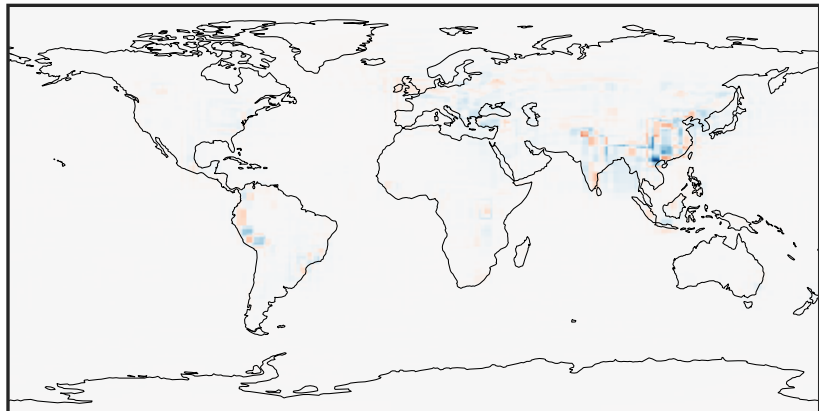
0.0005 0.1798 0.3590 0.5383 0.7176
ppb

14.3.0-rc.0 (Dev)
c24



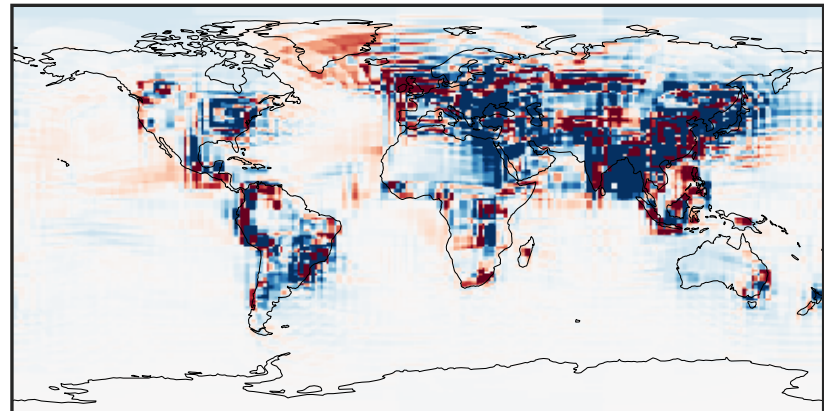
0.0005 0.1798 0.3590 0.5383 0.7176
ppb

Difference (1x1.25)
Dev - Ref, Dynamic Range



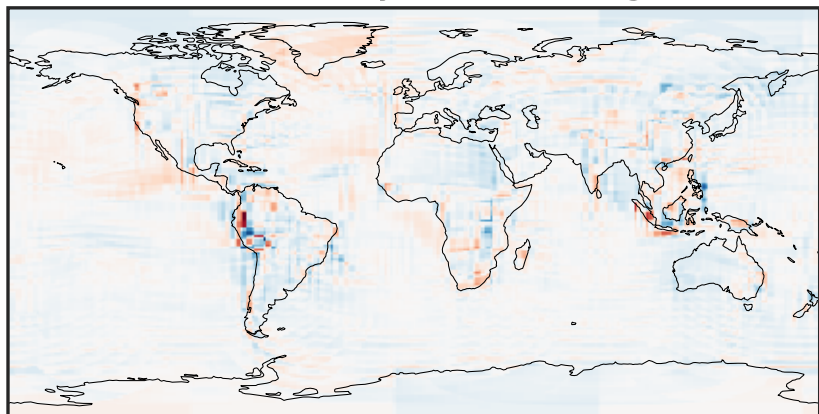
-0.4894 -0.2447 0.0000 0.2447 0.4894
ppb

Difference (1x1.25)
Dev - Ref, Restricted Range [5%,95%]



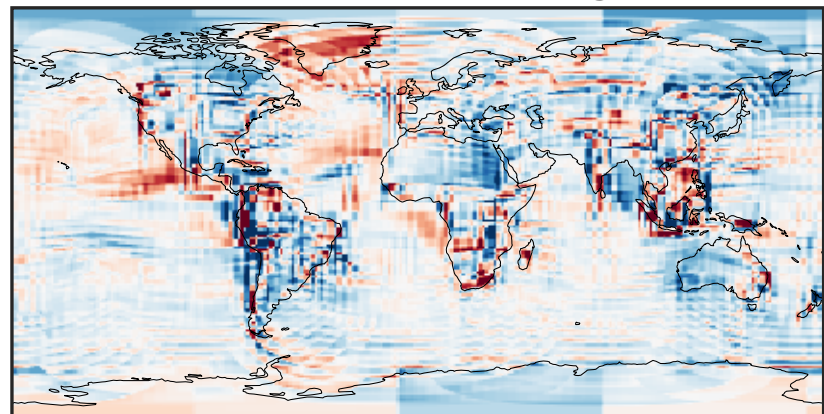
-0.006 0.000 0.006
ppb

Ratio (1x1.25)
Dev/Ref, Dynamic Range



1e-01 1 10
unitless

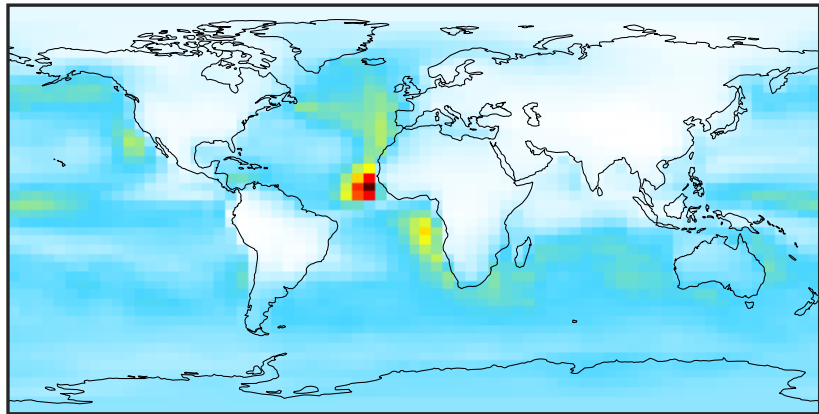
Ratio (1x1.25)
Dev/Ref, Fixed Range



0.50 0.75 1.00 1.50 2.00
unitless

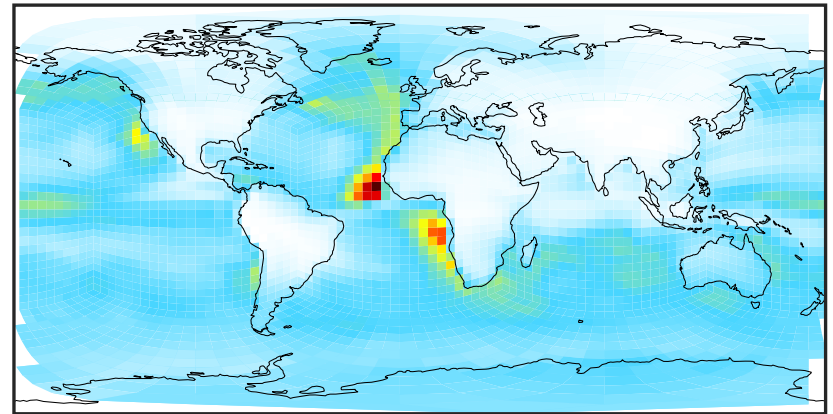
SpeciesConcVW_MSA (Apr2019)

14.3.0-rc.0 (Ref)
4.0x5.0



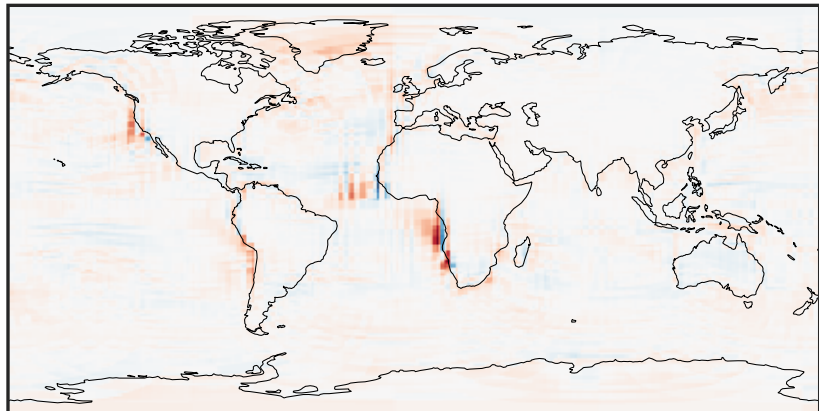
0.015 0.030 0.045
ppb

14.3.0-rc.0 (Dev)
c24



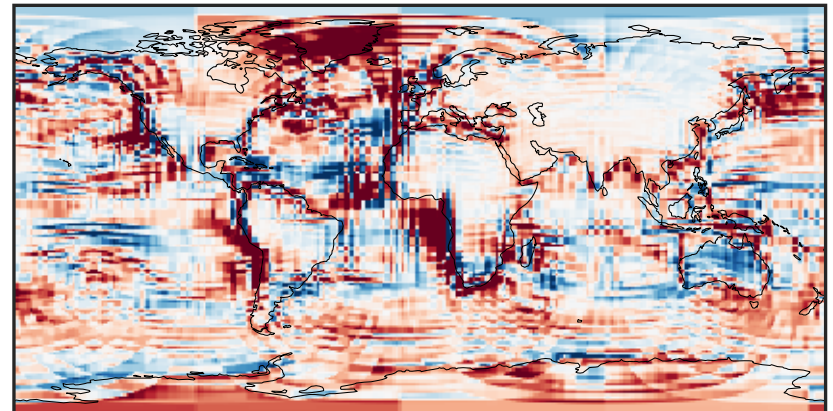
0.015 0.030 0.045
ppb

Difference (1x1.25)
Dev - Ref, Dynamic Range



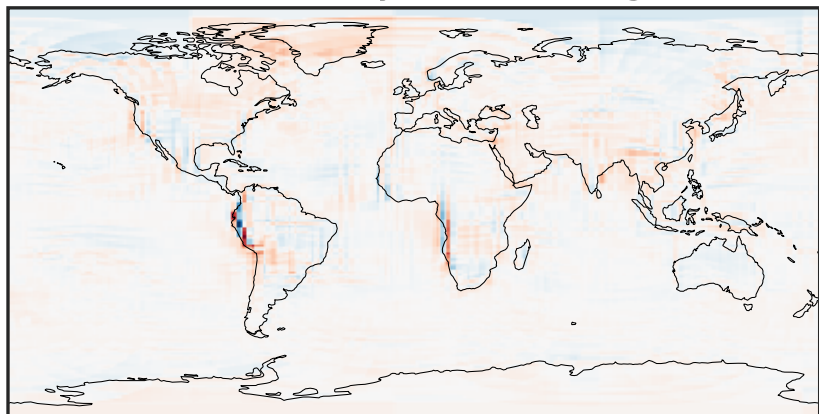
-0.008 0.000 0.008
ppb

Difference (1x1.25)
Dev - Ref, Restricted Range [5%,95%]



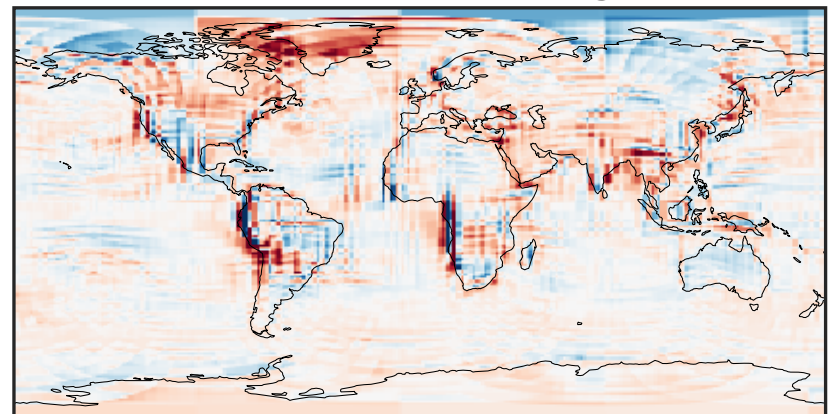
-0.0008 0.0000 0.0008
ppb

Ratio (1x1.25)
Dev/Ref, Dynamic Range



1e-01 1 10
unitless

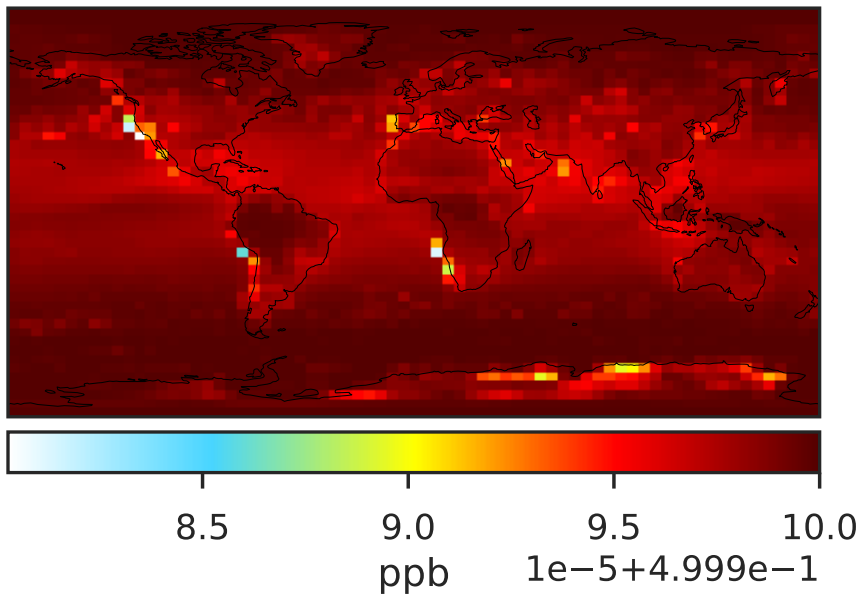
Ratio (1x1.25)
Dev/Ref, Fixed Range



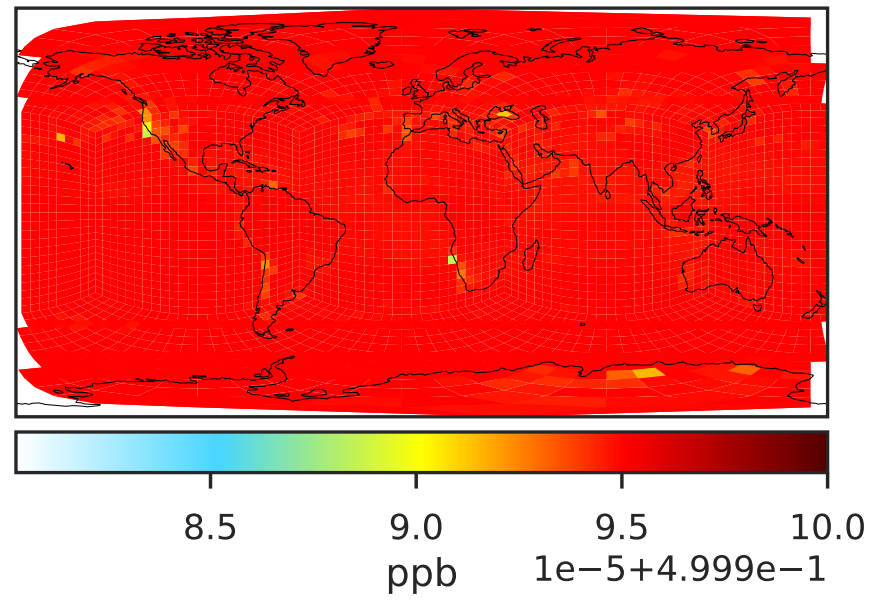
0.50 0.75 1.00 1.50 2.00
unitless

SpeciesConcVV_OCS (Apr2019)

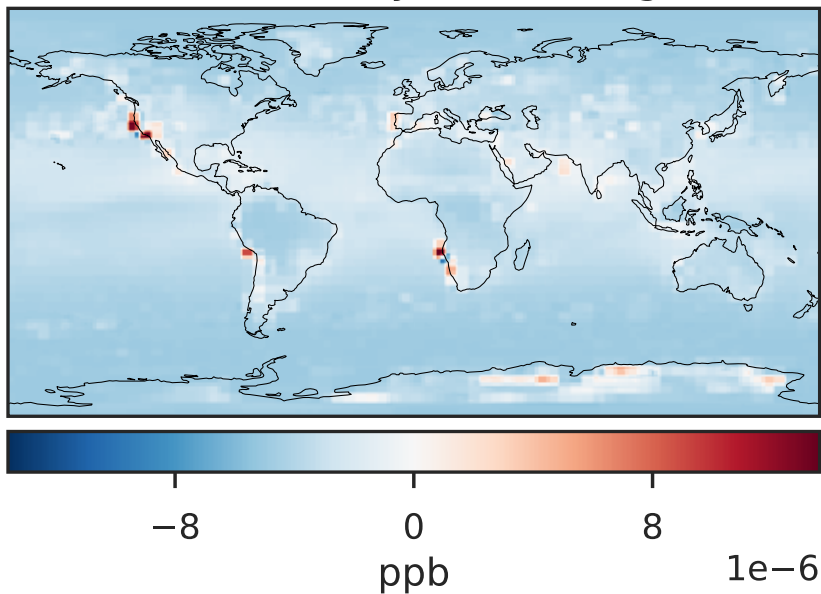
14.3.0-rc.0 (Ref)
4.0x5.0



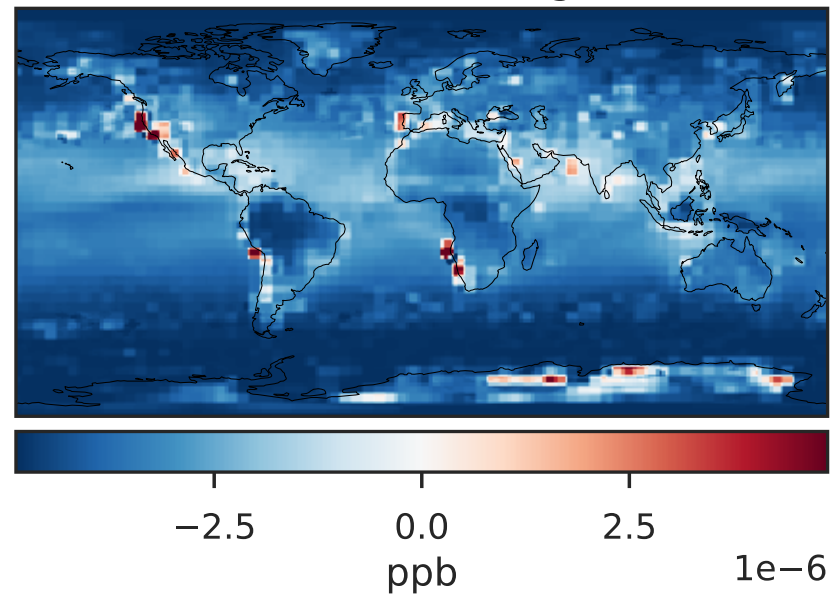
14.3.0-rc.0 (Dev)
c24



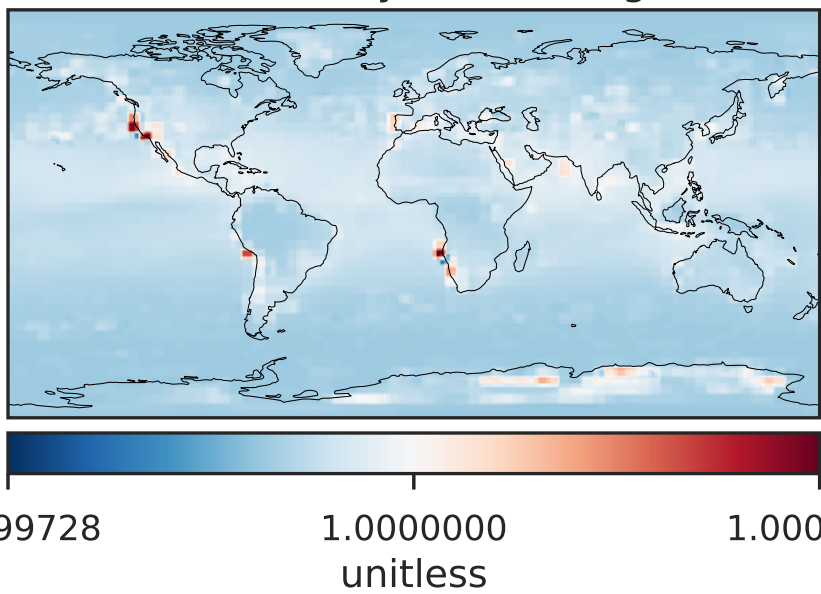
Difference (1x1.25)
Dev - Ref, Dynamic Range



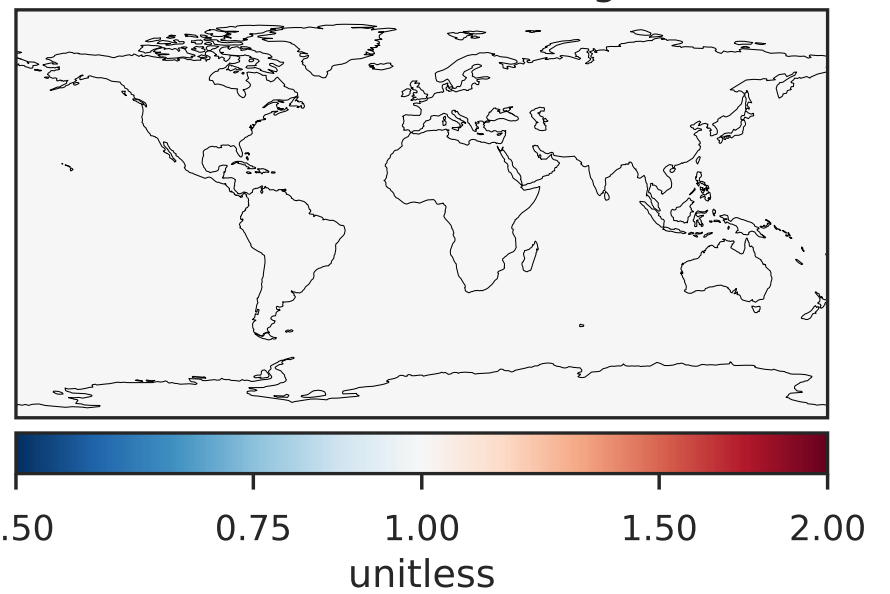
Difference (1x1.25)
Dev - Ref, Restricted Range [5%,95%]



Ratio (1x1.25)
Dev/Ref, Dynamic Range

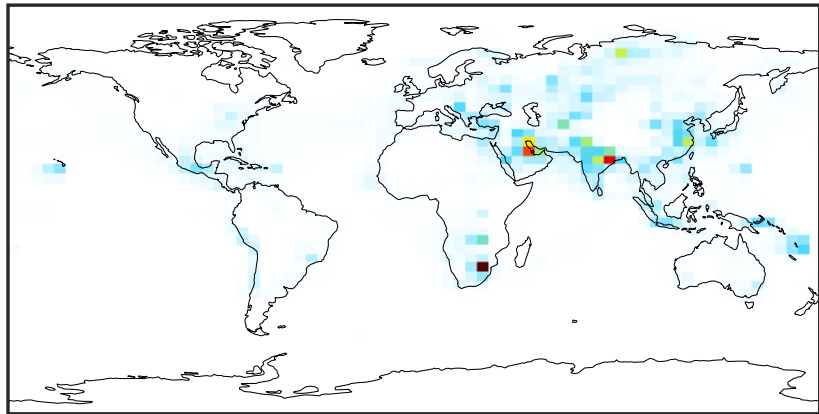


Ratio (1x1.25)
Dev/Ref, Fixed Range



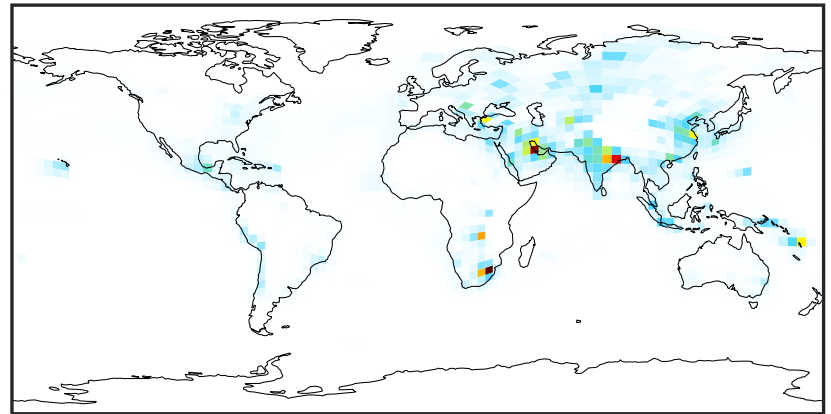
SpeciesConcVV_SO2 (Apr2019)

14.3.0-rc.0 (Ref)
4.0x5.0



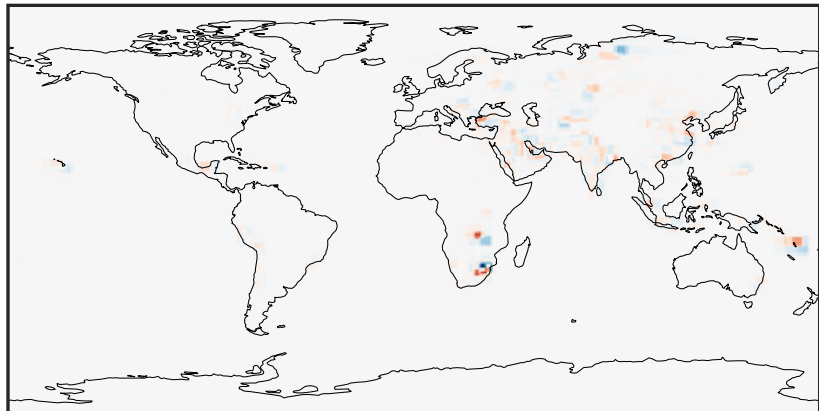
0.000 2.196 4.391 6.586 8.782
ppb

14.3.0-rc.0 (Dev)
c24



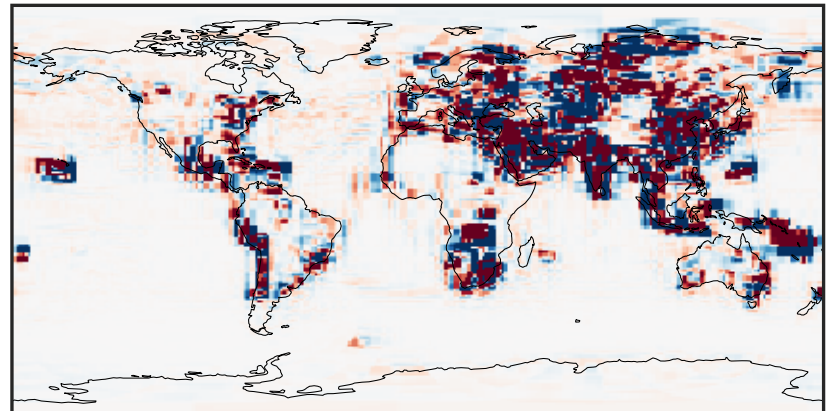
0.000 2.196 4.391 6.586 8.782
ppb

Difference (1x1.25)
Dev - Ref, Dynamic Range



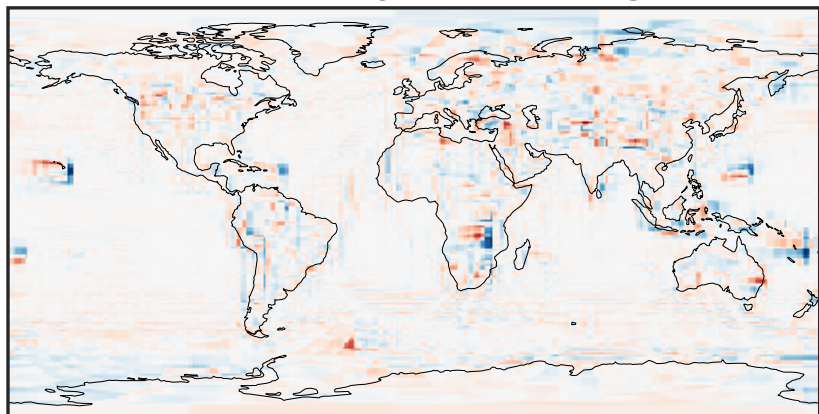
-7.29 -3.64 0.00 3.64 7.29
ppb

Difference (1x1.25)
Dev - Ref, Restricted Range [5%,95%]



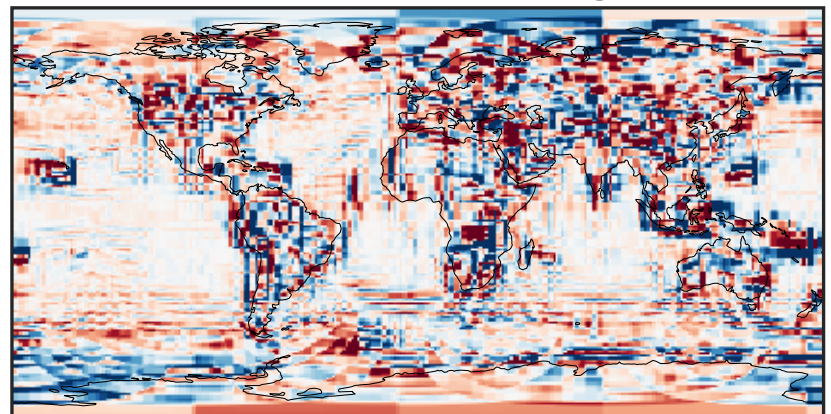
-0.0809 -0.0404 0.0000 0.0404 0.0809
ppb

Ratio (1x1.25)
Dev/Ref, Dynamic Range



1e-01 1 10
unitless

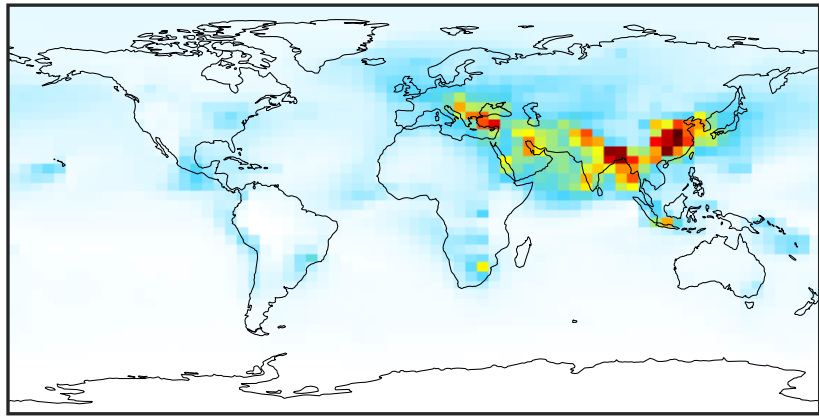
Ratio (1x1.25)
Dev/Ref, Fixed Range



0.50 0.75 1.00 1.50 2.00
unitless

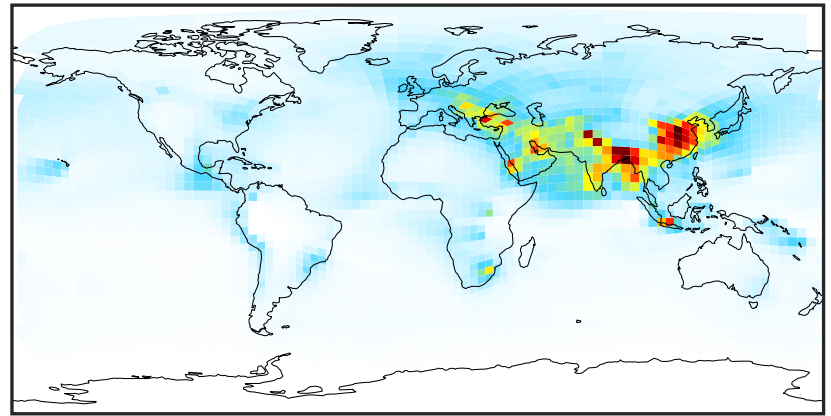
SpeciesConcVV_SO4 (Apr2019)

14.3.0-rc.0 (Ref)
4.0x5.0



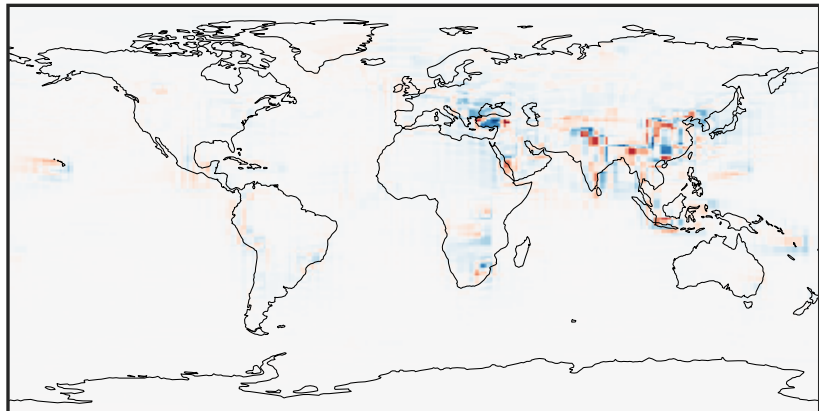
0.015 1.097 2.178 3.259 4.340
ppb

14.3.0-rc.0 (Dev)
c24



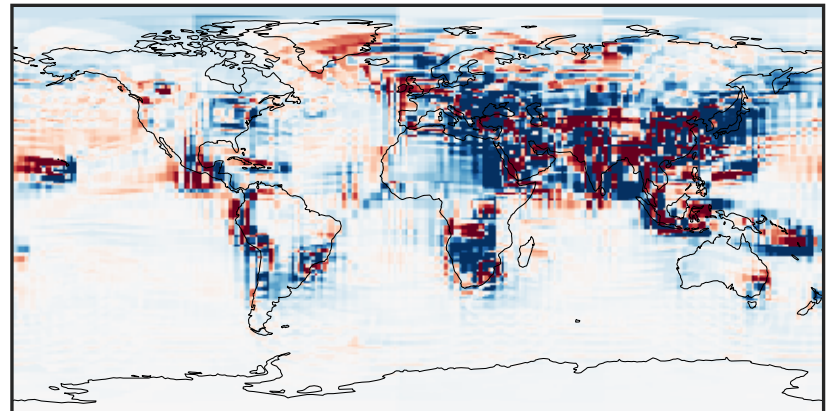
0.015 1.097 2.178 3.259 4.340
ppb

Difference (1x1.25)
Dev - Ref, Dynamic Range



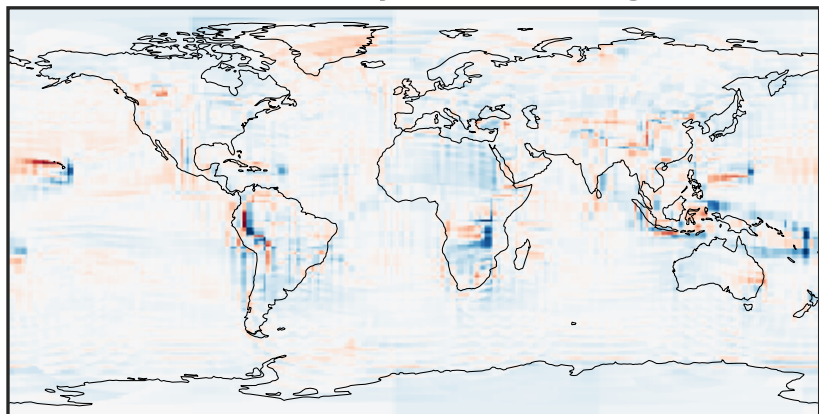
-1.745 -0.873 0.000 0.873 1.745
ppb

Difference (1x1.25)
Dev - Ref, Restricted Range [5%,95%]



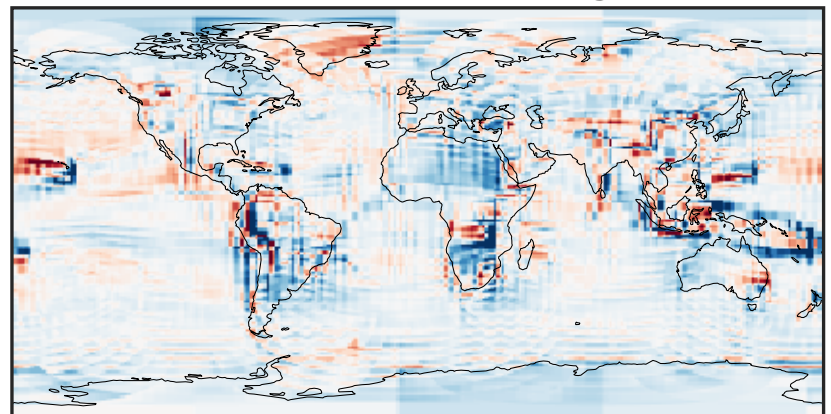
-0.116 -0.058 0.000 0.058 0.116
ppb

Ratio (1x1.25)
Dev/Ref, Dynamic Range



0.205 0.602 1.000 2.943 4.887
unitless

Ratio (1x1.25)
Dev/Ref, Fixed Range



0.50 0.75 1.00 1.50 2.00
unitless