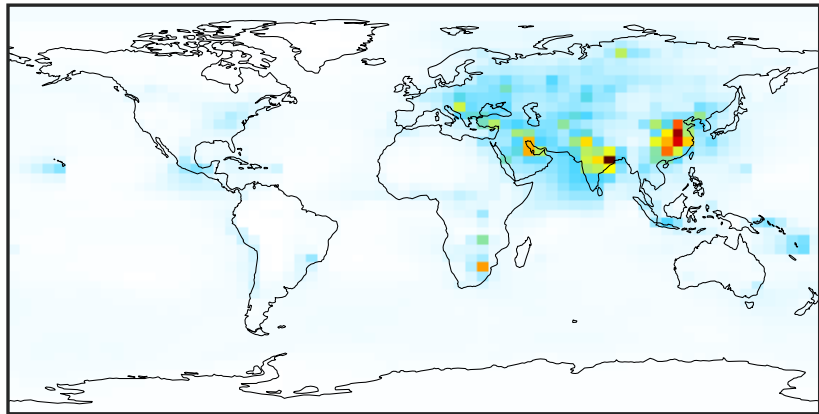


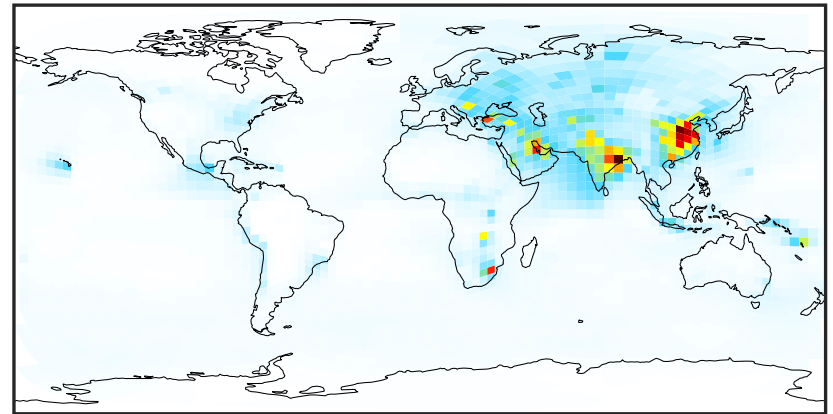
SpeciesConcVV_SOx (Jan2019)

14.3.0-rc.0 (Ref)
4.0x5.0



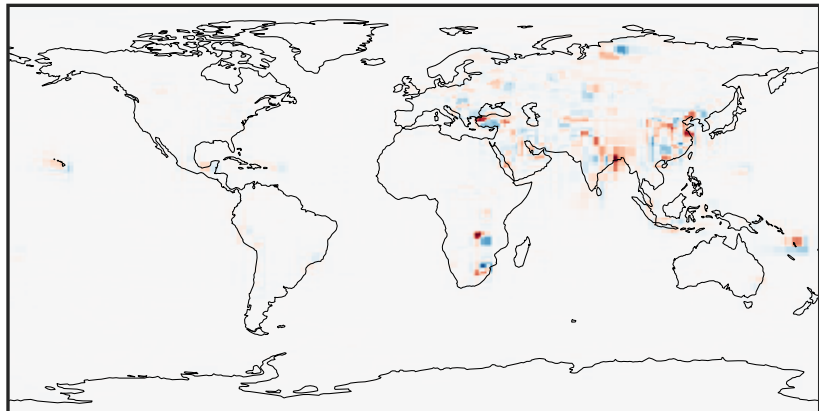
0.04 3.47 6.90 10.33 13.76
ppb

14.3.0-rc.0 (Dev)
c24



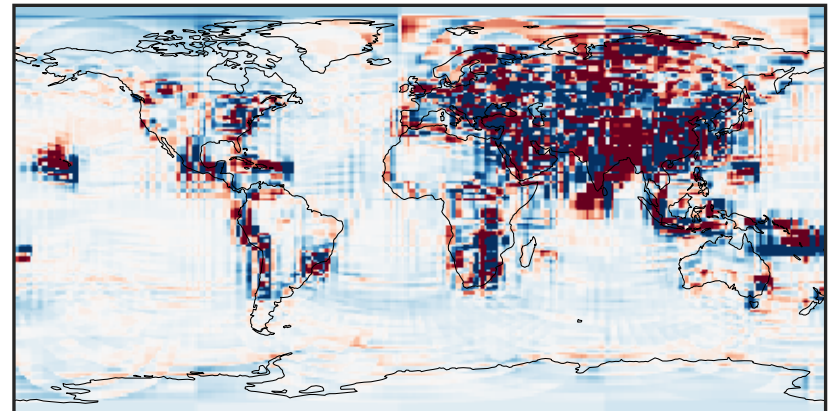
0.04 3.47 6.90 10.33 13.76
ppb

Difference (1x1.25)
Dev - Ref, Dynamic Range



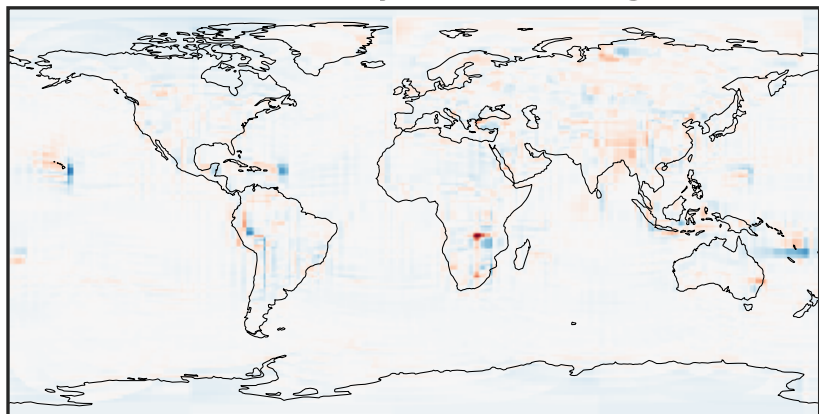
-6.77 -3.39 0.00 3.39 6.77
ppb

Difference (1x1.25)
Dev - Ref, Restricted Range [5%,95%]



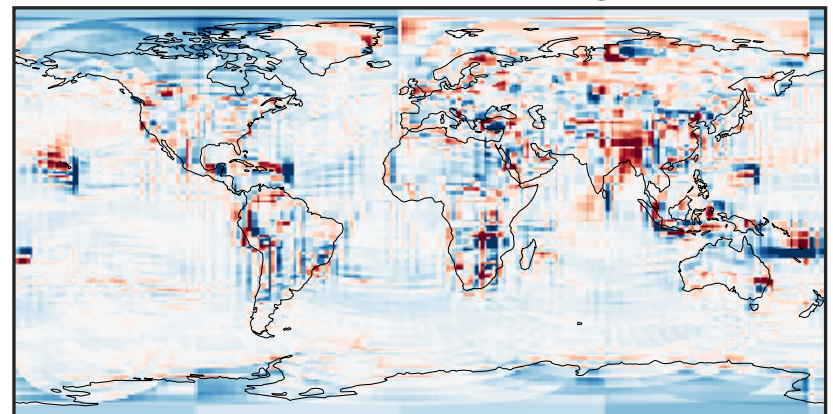
-0.1493 -0.0747 0.0000 0.0747 0.1493
ppb

Ratio (1x1.25)
Dev/Ref, Dynamic Range



1e-01 1 10
unitless

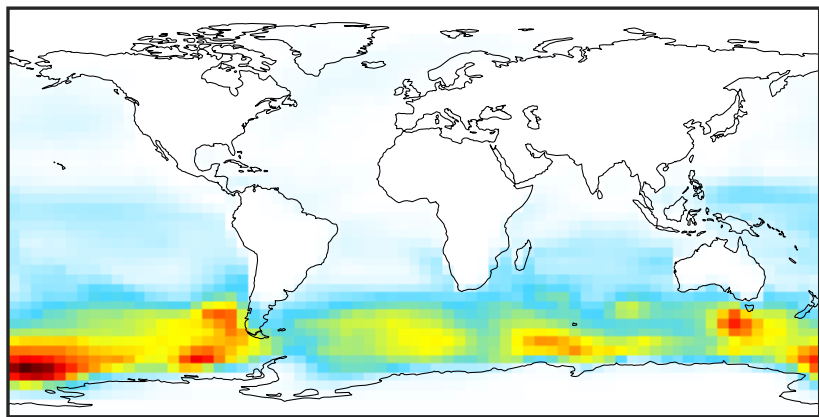
Ratio (1x1.25)
Dev/Ref, Fixed Range



0.50 0.75 1.00 1.50 2.00
unitless

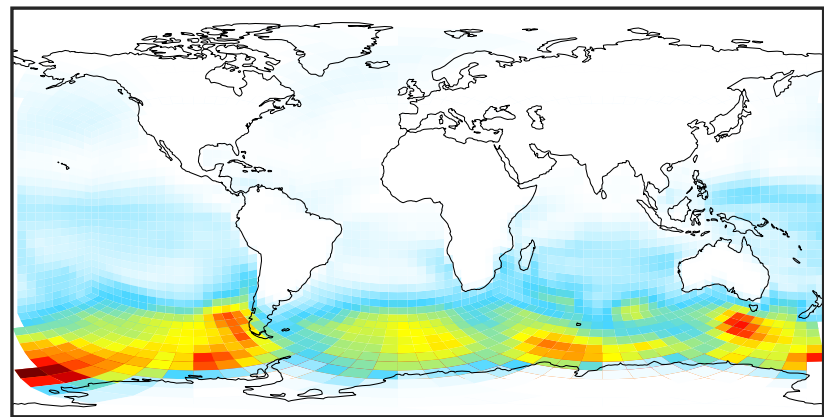
SpeciesConcVV_DMS (Jan2019)

14.3.0-rc.0 (Ref)
4.0x5.0



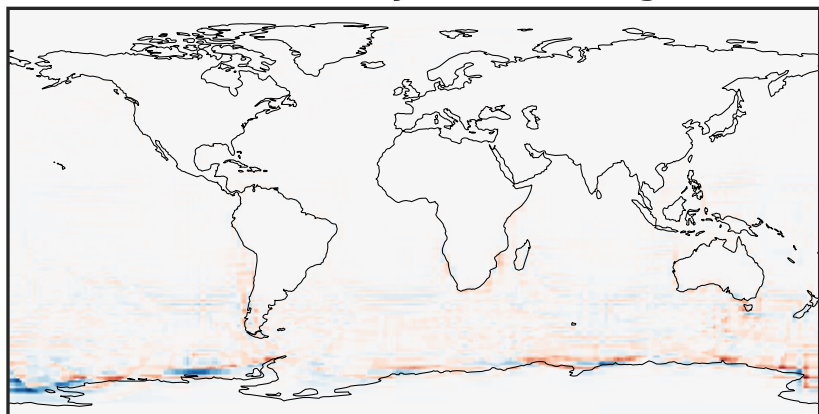
0.000 0.375 0.750 1.126 1.501
ppb

14.3.0-rc.0 (Dev)
c24



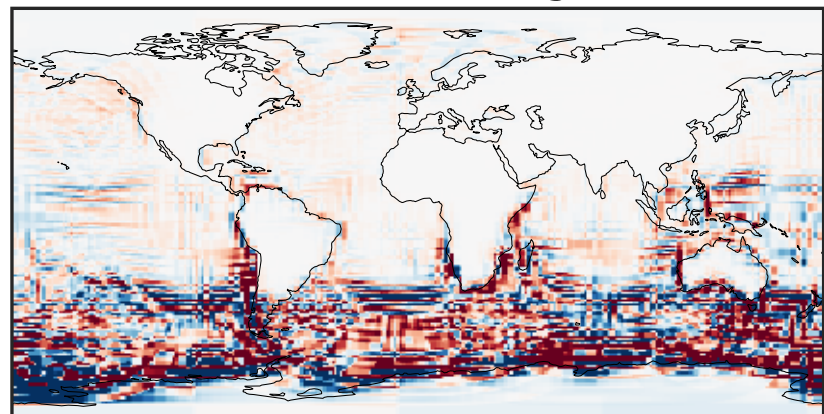
0.000 0.375 0.750 1.126 1.501
ppb

Difference (1x1.25)
Dev - Ref, Dynamic Range



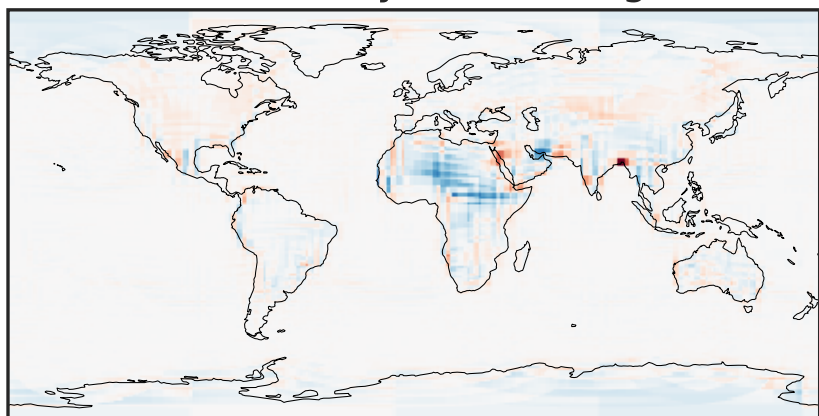
-0.647 -0.323 0.000 0.323 0.647
ppb

Difference (1x1.25)
Dev - Ref, Restricted Range [5%,95%]



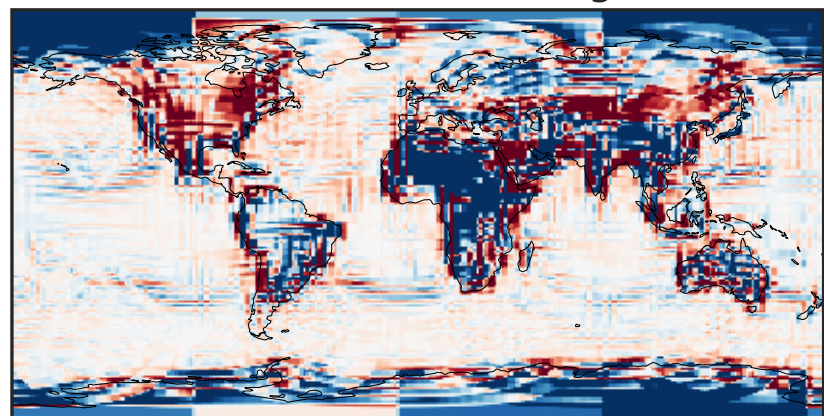
-0.025 0.000 0.025
ppb

Ratio (1x1.25)
Dev/Ref, Dynamic Range



unitless

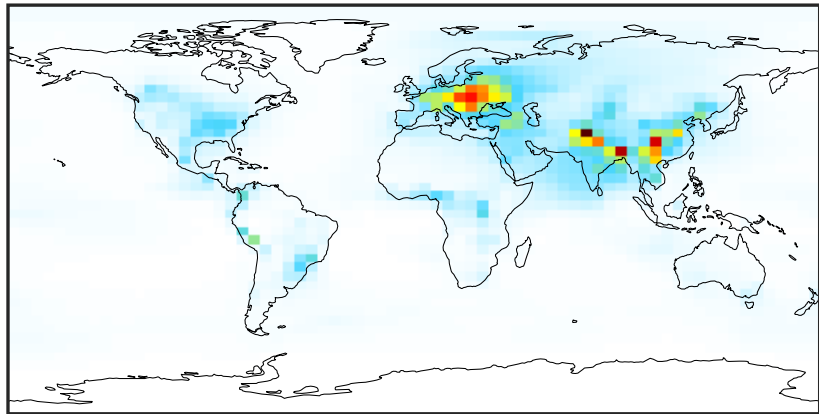
Ratio (1x1.25)
Dev/Ref, Fixed Range



0.50 0.75 1.00 1.50 2.00
unitless

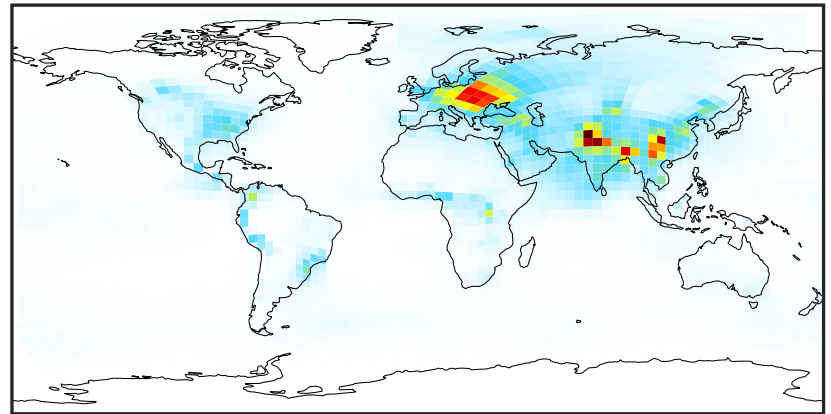
SpeciesConcVV_HMS (Jan2019)

14.3.0-rc.0 (Ref)
4.0x5.0



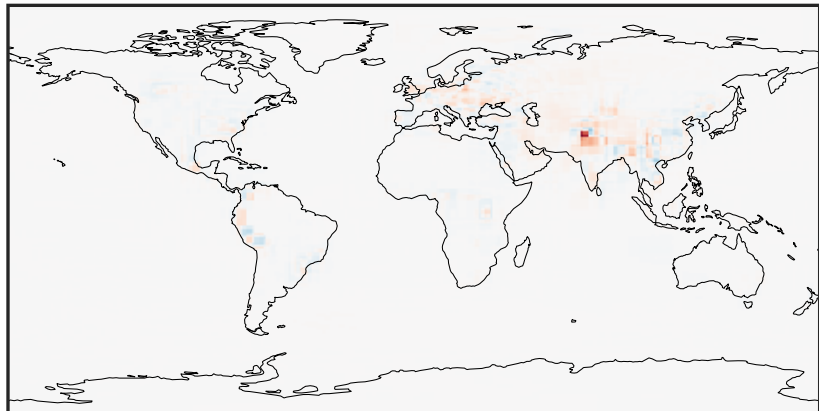
0.0004 0.1447 0.2891 0.4334 0.5778
ppb

14.3.0-rc.0 (Dev)
c24



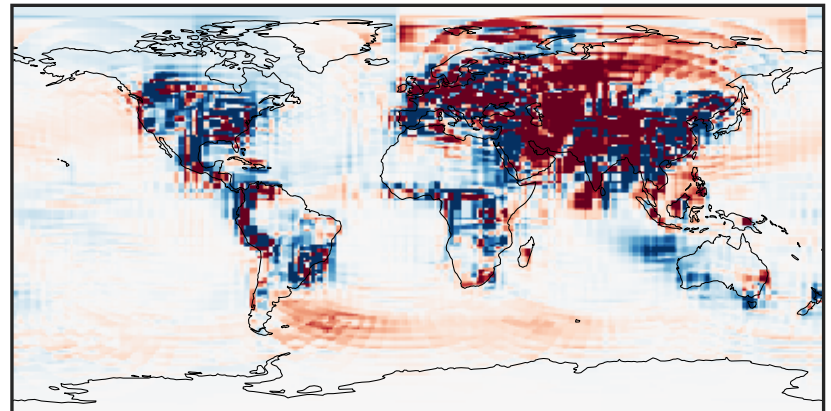
0.0004 0.1447 0.2891 0.4334 0.5778
ppb

Difference (1x1.25)
Dev - Ref, Dynamic Range



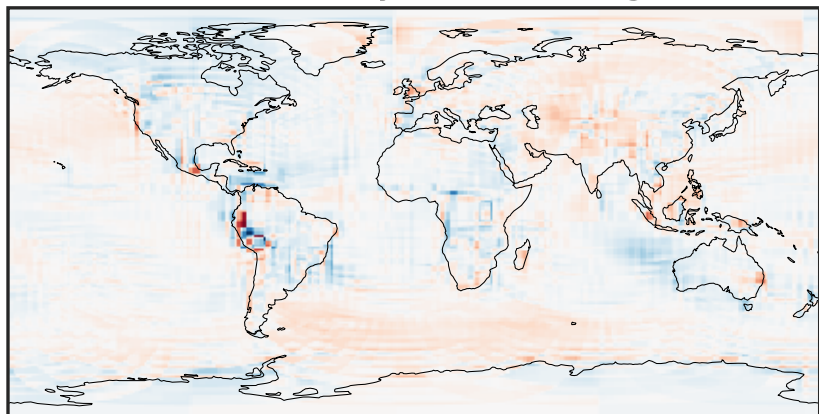
-0.603 -0.301 0.000 0.301 0.603
ppb

Difference (1x1.25)
Dev - Ref, Restricted Range [5%,95%]



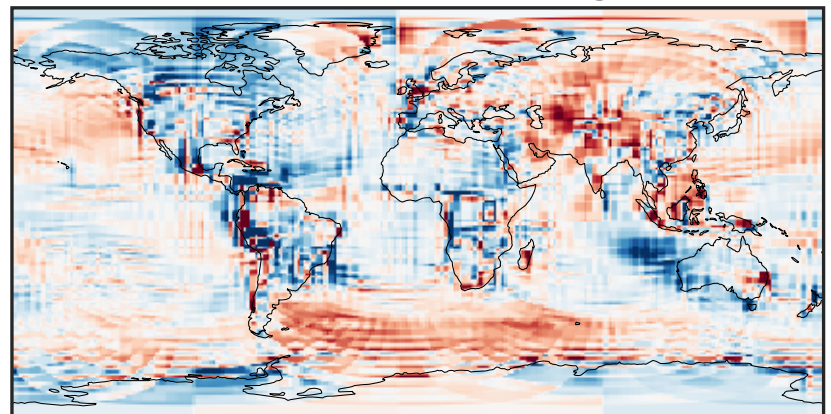
-0.005 0.000 0.005
ppb

Ratio (1x1.25)
Dev/Ref, Dynamic Range



1e-01 1 10
unitless

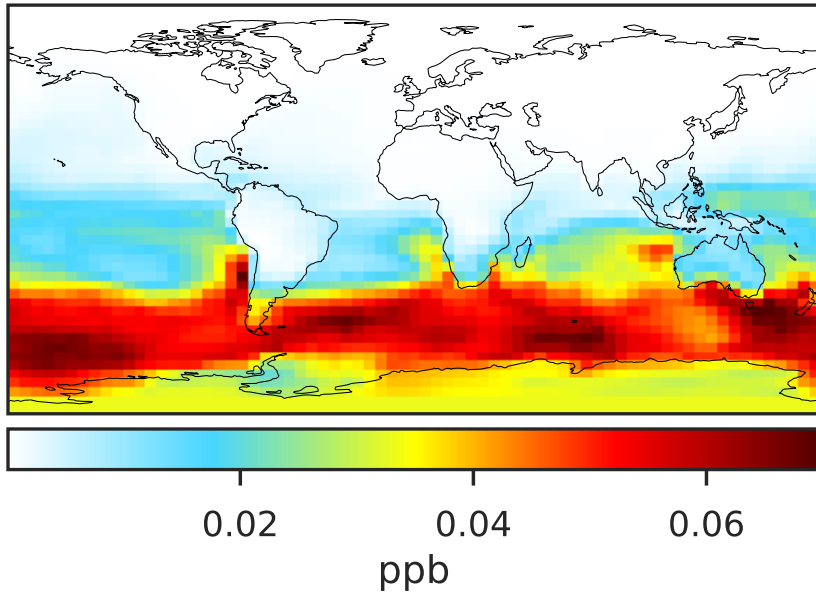
Ratio (1x1.25)
Dev/Ref, Fixed Range



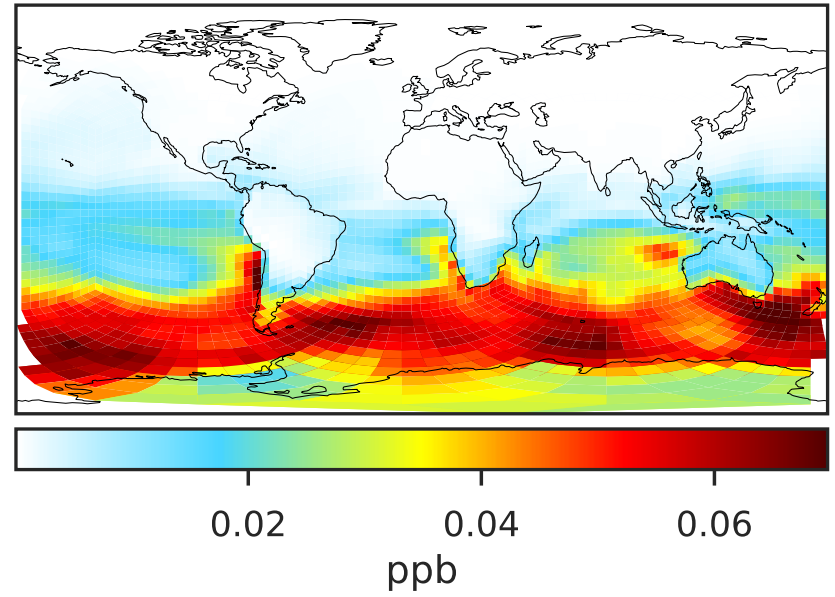
0.50 0.75 1.00 1.50 2.00
unitless

SpeciesConcVV_MSA (Jan2019)

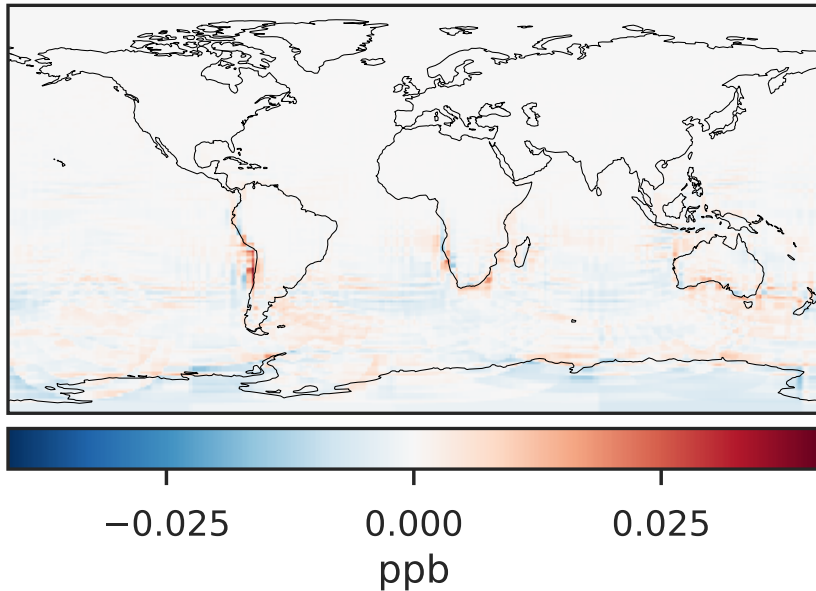
14.3.0-rc.0 (Ref)
4.0x5.0



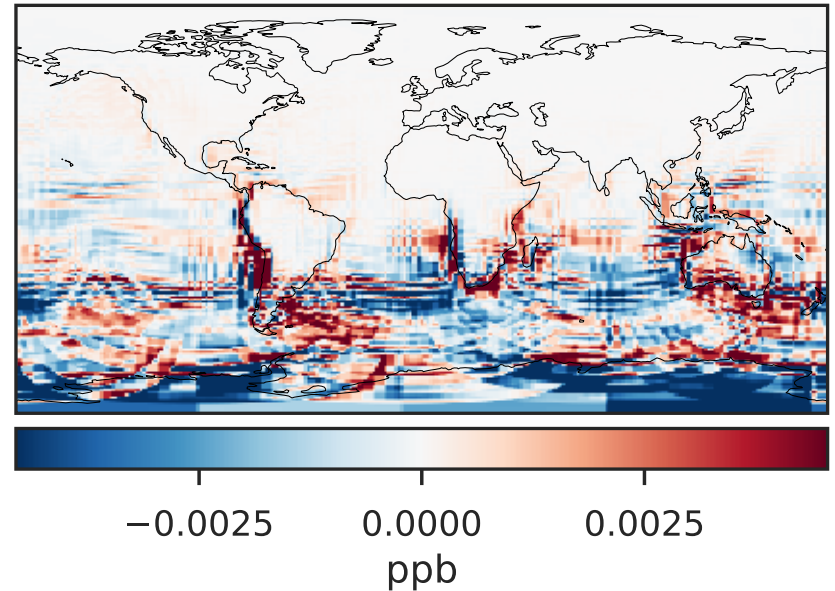
14.3.0-rc.0 (Dev)
c24



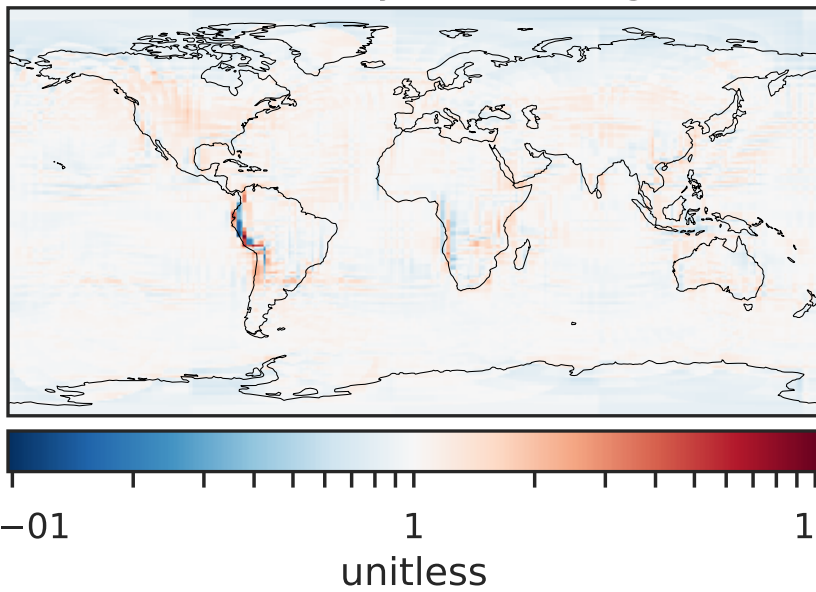
Difference (1x1.25)
Dev - Ref, Dynamic Range



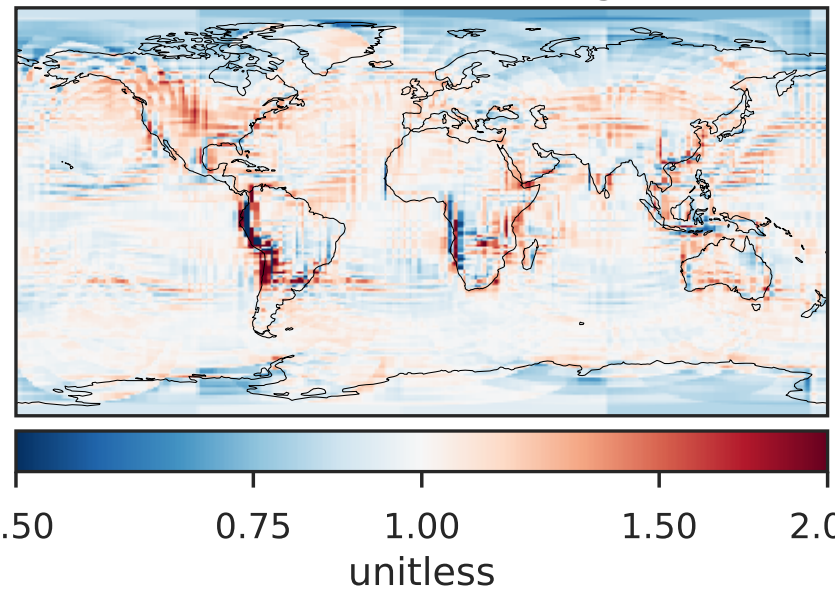
Difference (1x1.25)
Dev - Ref, Restricted Range [5%,95%]



Ratio (1x1.25)
Dev/Ref, Dynamic Range

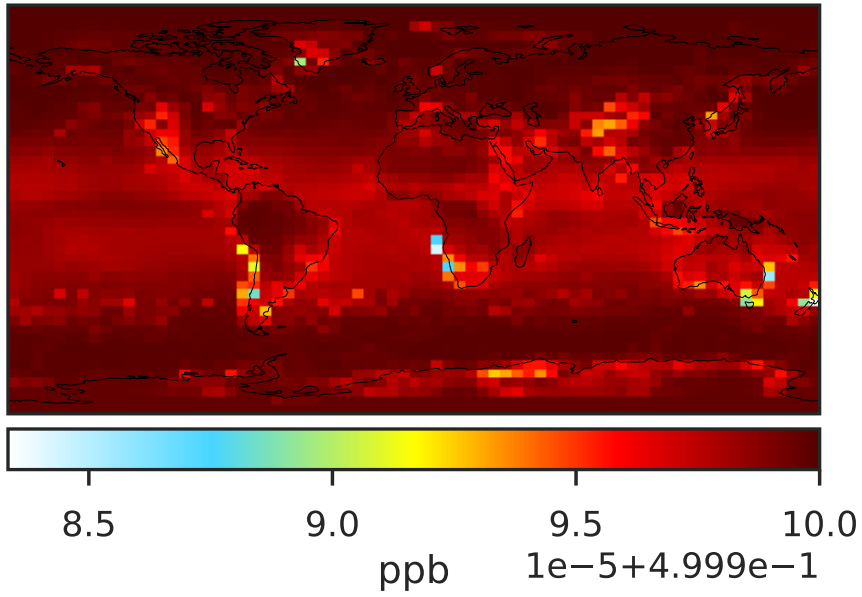


Ratio (1x1.25)
Dev/Ref, Fixed Range

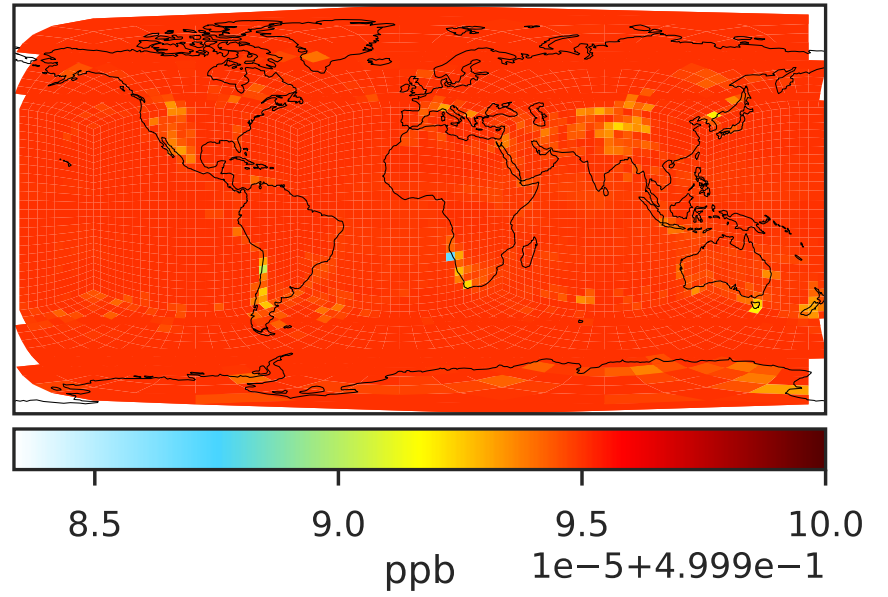


SpeciesConcVV_OCS (Jan2019)

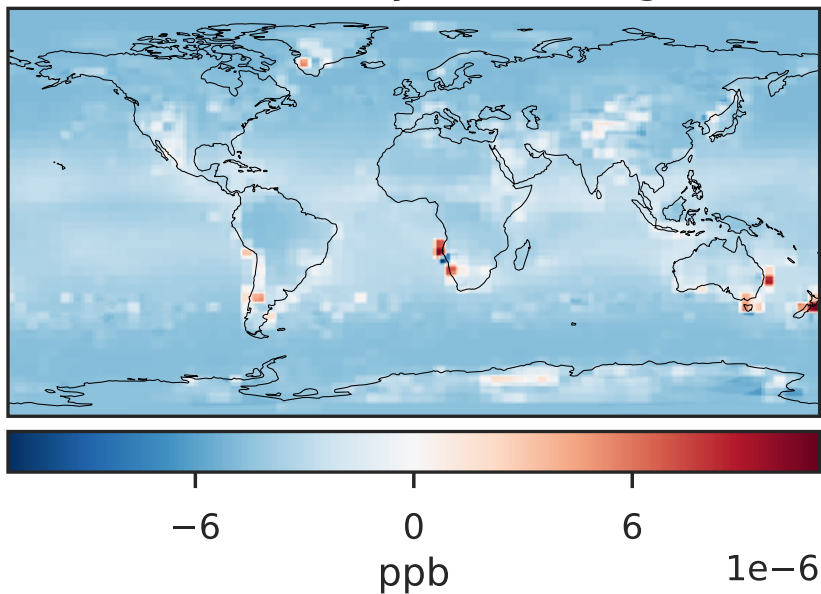
14.3.0-rc.0 (Ref)
4.0x5.0



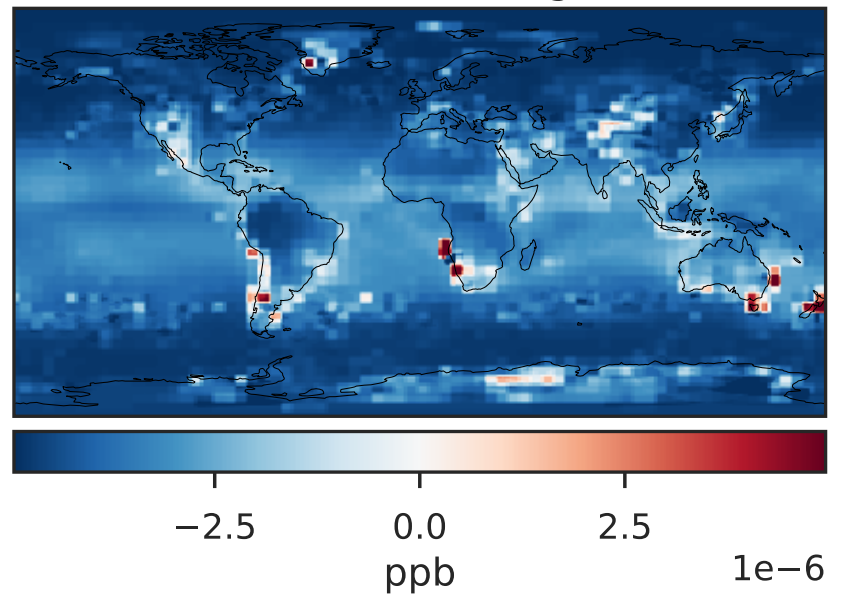
14.3.0-rc.0 (Dev)
c24



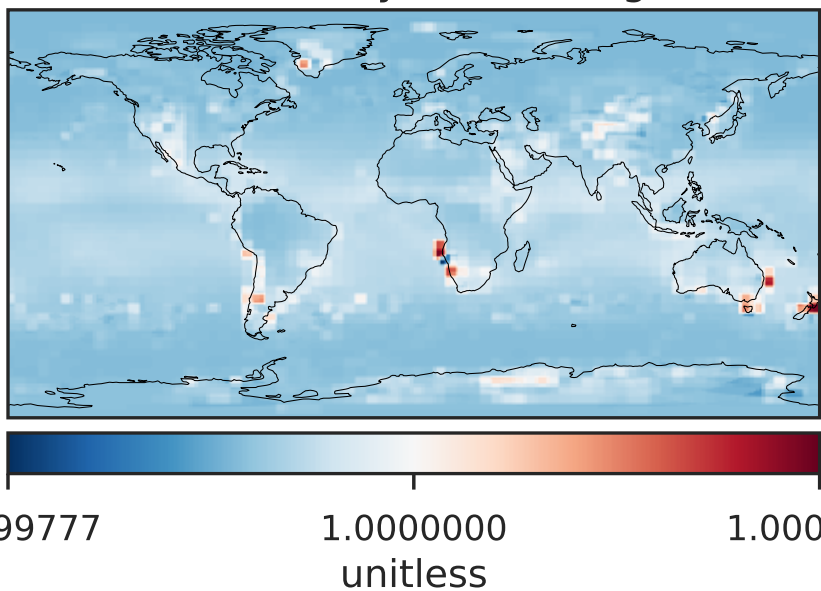
Difference (1x1.25)
Dev - Ref, Dynamic Range



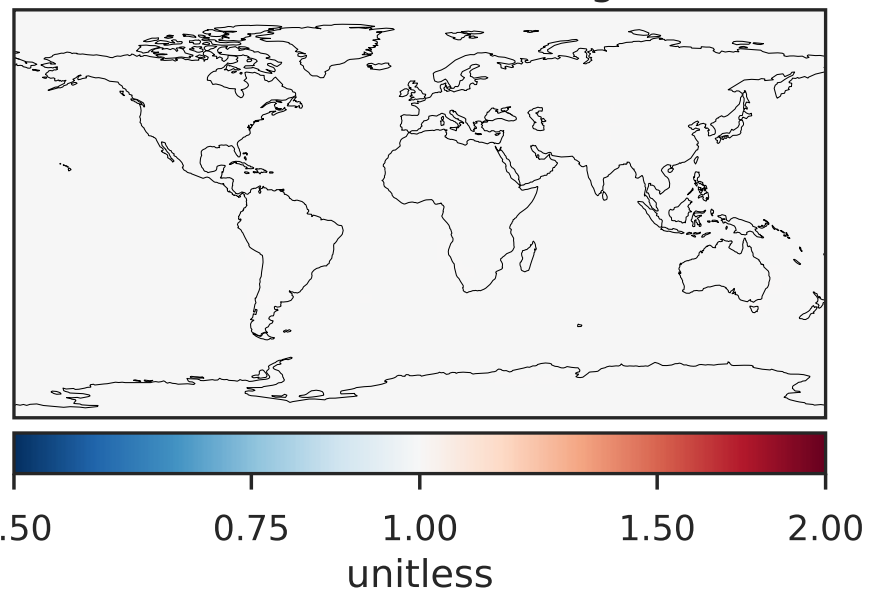
Difference (1x1.25)
Dev - Ref, Restricted Range [5%,95%]



Ratio (1x1.25)
Dev/Ref, Dynamic Range

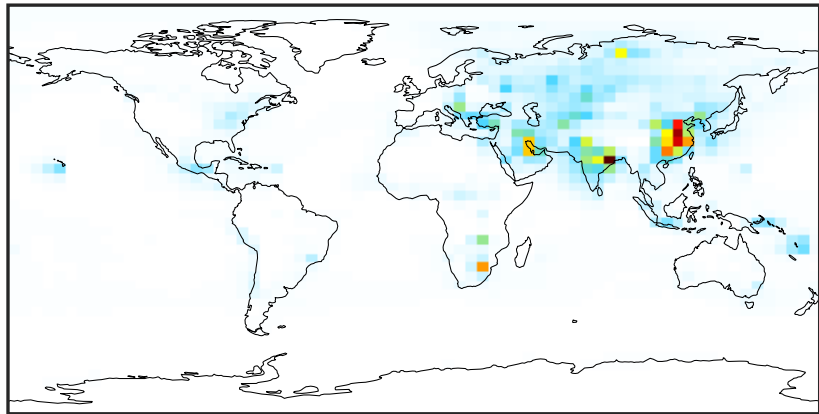


Ratio (1x1.25)
Dev/Ref, Fixed Range



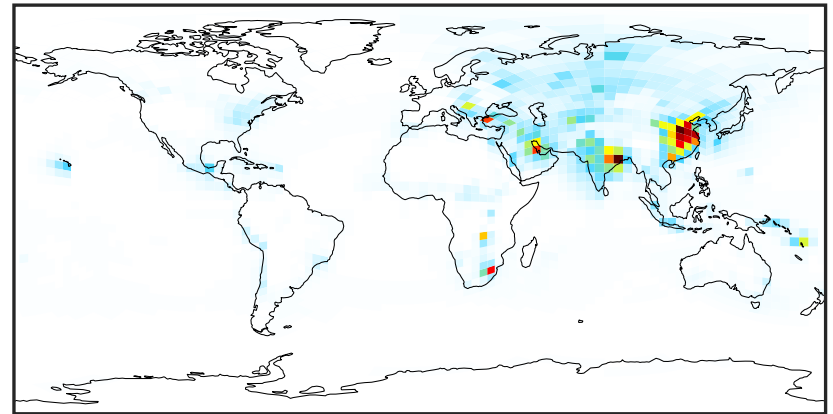
SpeciesConcVV_SO2 (Jan2019)

14.3.0-rc.0 (Ref)
4.0x5.0



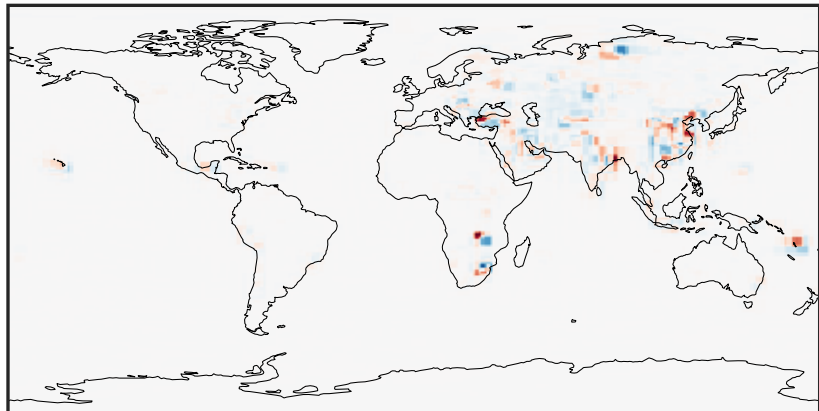
0.00 2.59 5.18 7.78 10.37
ppb

14.3.0-rc.0 (Dev)
c24



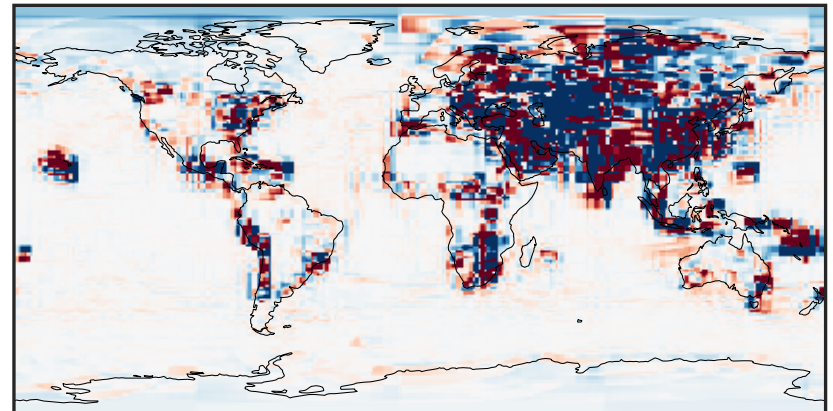
0.00 2.59 5.18 7.78 10.37
ppb

Difference (1x1.25)
Dev - Ref, Dynamic Range



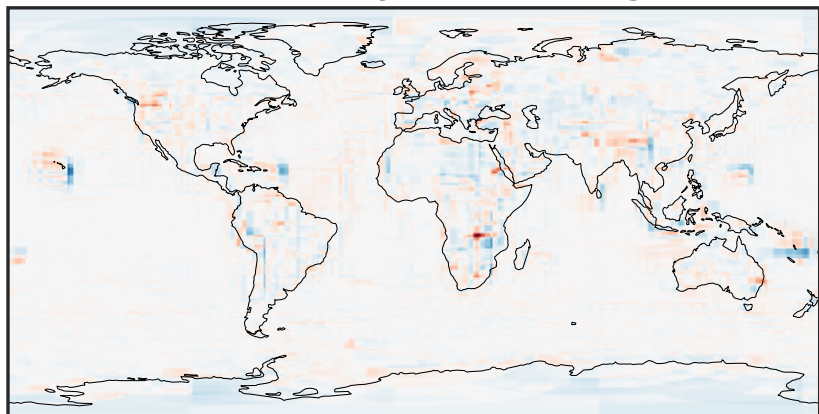
-5.74 -2.87 0.00 2.87 5.74
ppb

Difference (1x1.25)
Dev - Ref, Restricted Range [5%,95%]



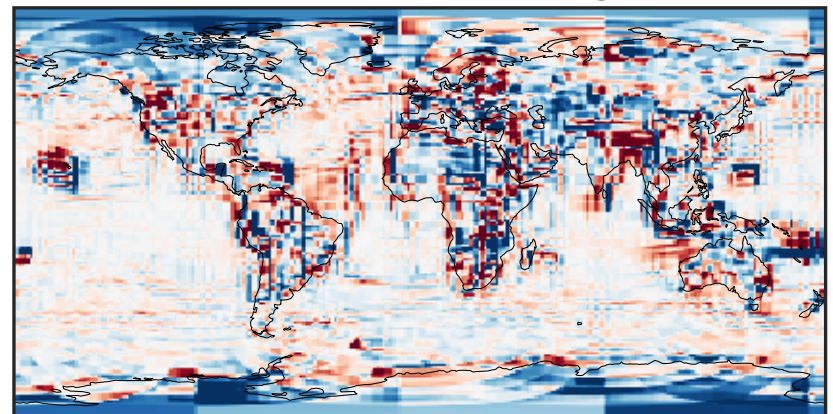
-0.1091 -0.0545 0.0000 0.0545 0.1091
ppb

Ratio (1x1.25)
Dev/Ref, Dynamic Range



1e-02 1e-01 1 10 100
unitless

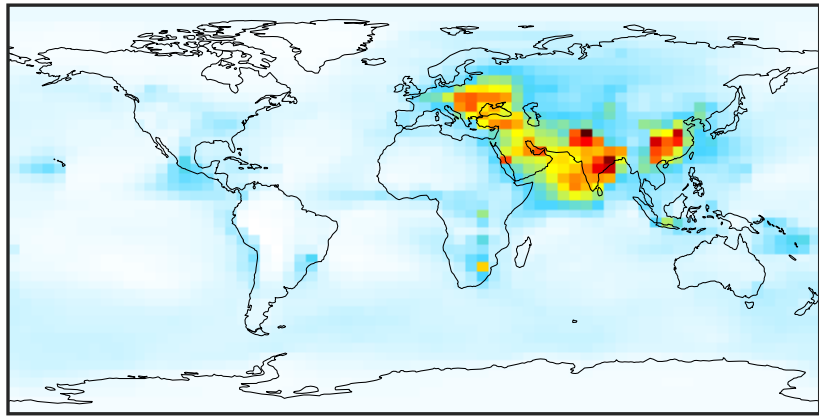
Ratio (1x1.25)
Dev/Ref, Fixed Range



0.50 0.75 1.00 1.50 2.00
unitless

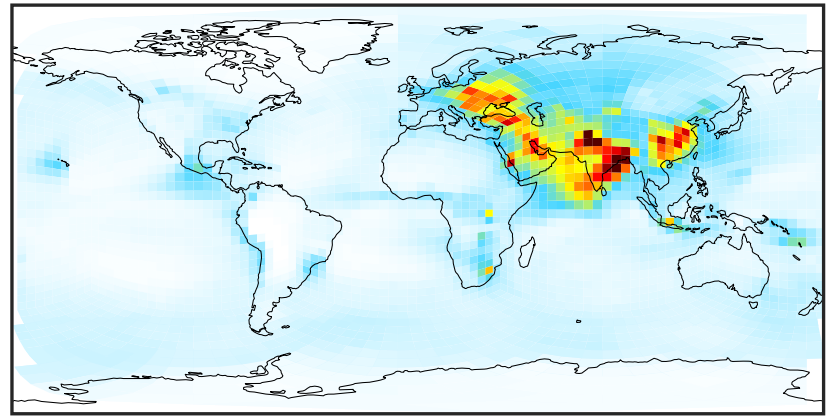
SpeciesConcVV_SO4 (Jan2019)

14.3.0-rc.0 (Ref)
4.0x5.0



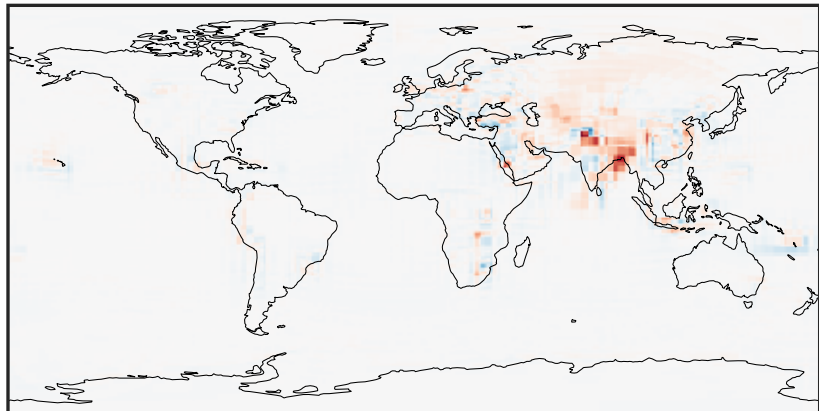
0.029 0.937 1.846 2.755 3.664
ppb

14.3.0-rc.0 (Dev)
c24



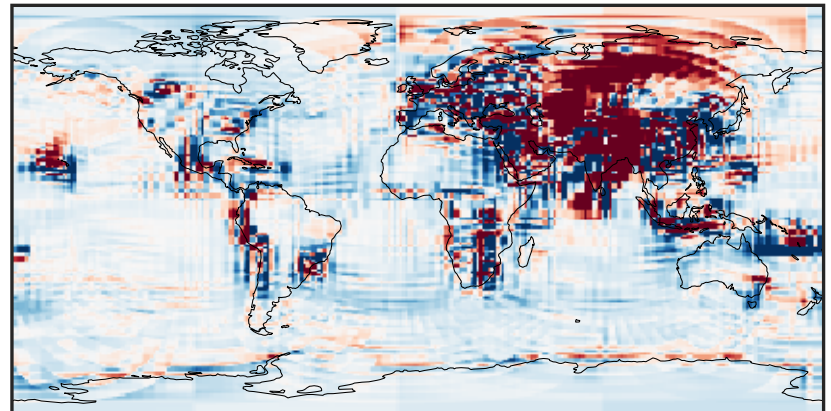
0.029 0.937 1.846 2.755 3.664
ppb

Difference (1x1.25)
Dev - Ref, Dynamic Range



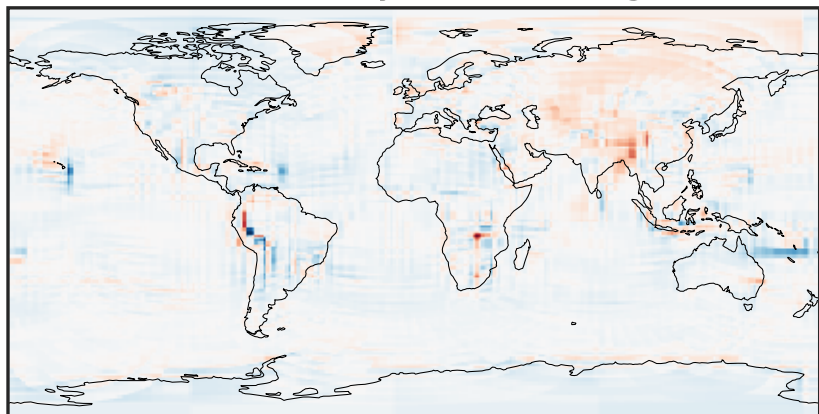
-2.312 -1.156 0.000 1.156 2.312
ppb

Difference (1x1.25)
Dev - Ref, Restricted Range [5%,95%]



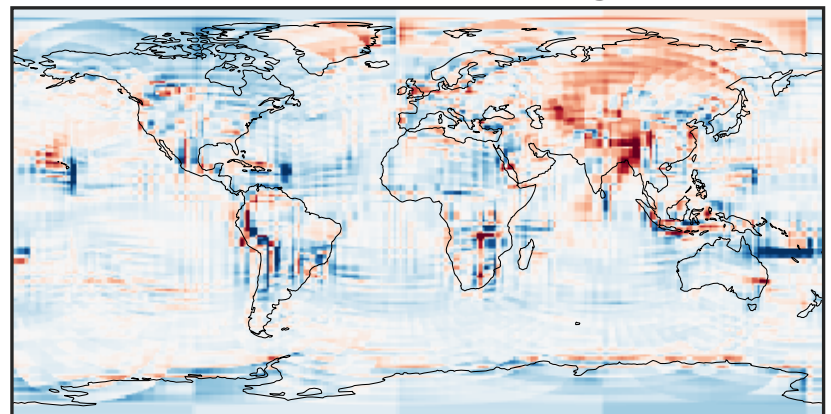
-0.0948 -0.0474 0.0000 0.0474 0.0948
ppb

Ratio (1x1.25)
Dev/Ref, Dynamic Range



0.137 0.568 1.000 4.160 7.320
unitless

Ratio (1x1.25)
Dev/Ref, Fixed Range



0.50 0.75 1.00 1.50 2.00
unitless