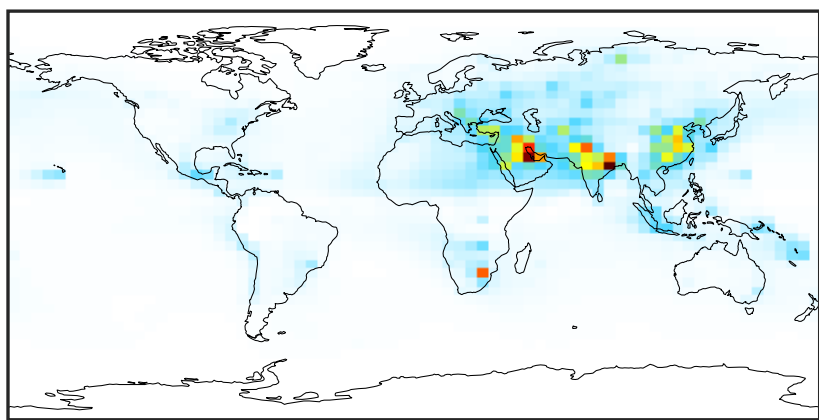


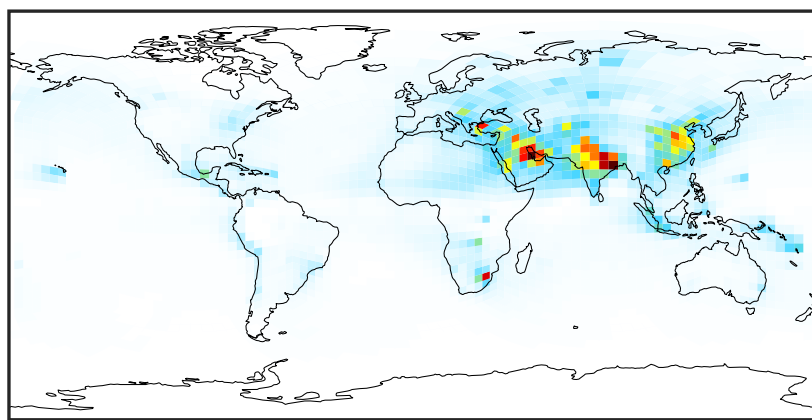
SpeciesConcVV_SOx (Oct2019)

14.3.0-rc.0 (Ref)
4.0x5.0



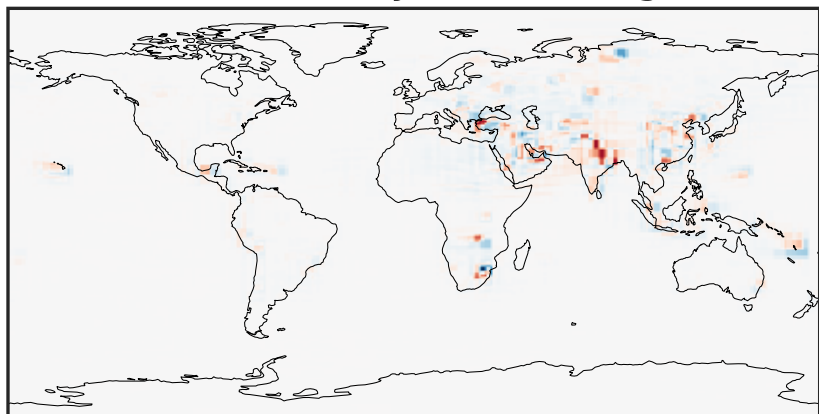
0.03 3.13 6.23 9.33 12.44
ppb

14.3.0-rc.0 (Dev)
c24



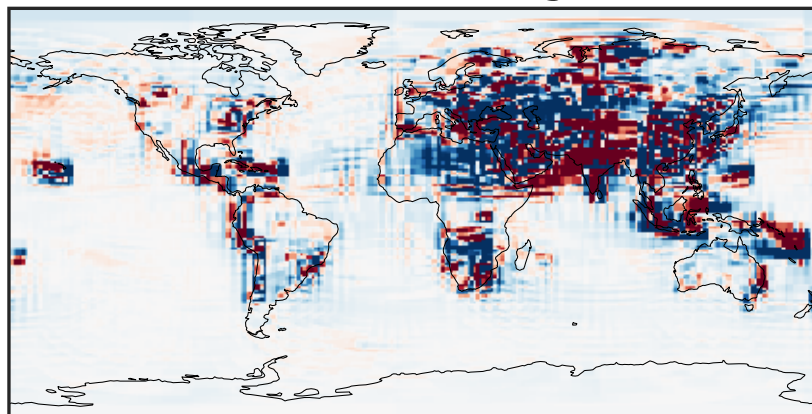
0.03 3.13 6.23 9.33 12.44
ppb

Difference (1x1.25)
Dev - Ref, Dynamic Range



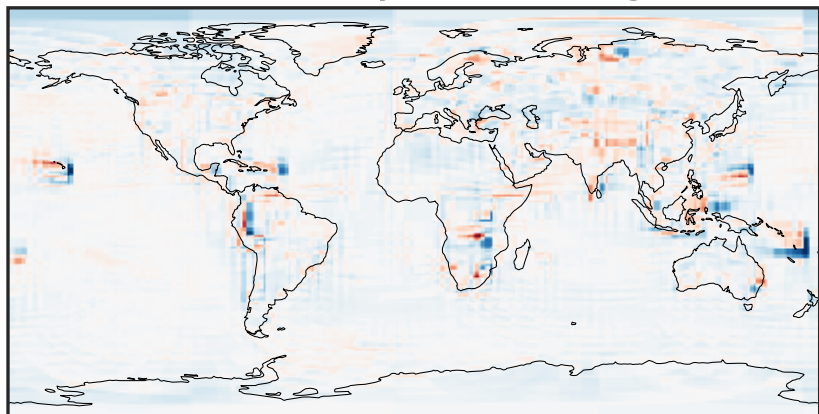
-6.17 -3.08 0.00 3.08 6.17
ppb

Difference (1x1.25)
Dev - Ref, Restricted Range [5%,95%]



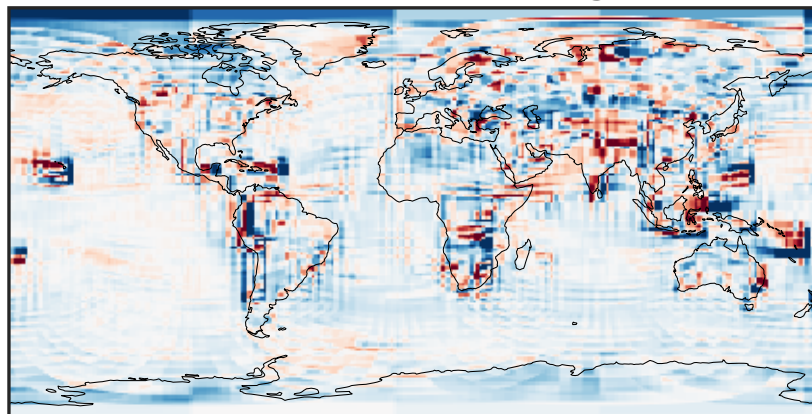
-0.1769 -0.0885 0.0000 0.0885 0.1769
ppb

Ratio (1x1.25)
Dev/Ref, Dynamic Range



1e-01 1 10
unitless

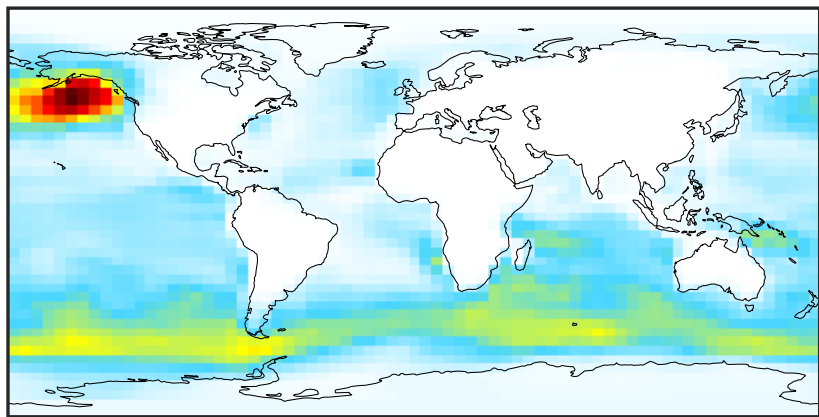
Ratio (1x1.25)
Dev/Ref, Fixed Range



0.50 0.75 1.00 1.50 2.00
unitless

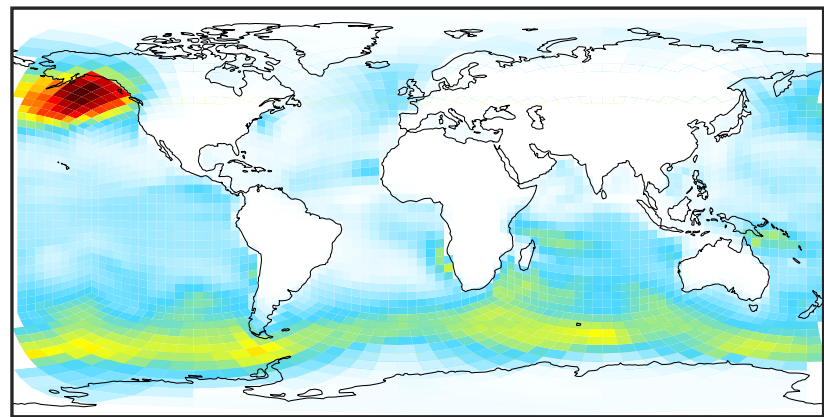
SpeciesConcVV_DMS (Oct2019)

14.3.0-rc.0 (Ref)
4.0x5.0



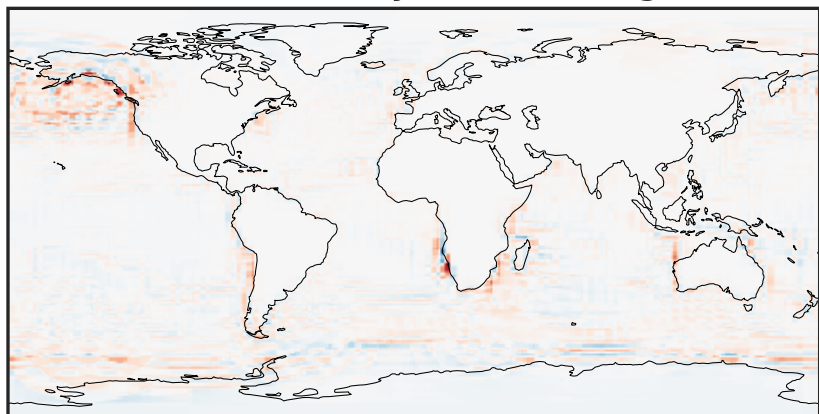
0.0000 0.1147 0.2294 0.3441 0.4588
ppb

14.3.0-rc.0 (Dev)
c24



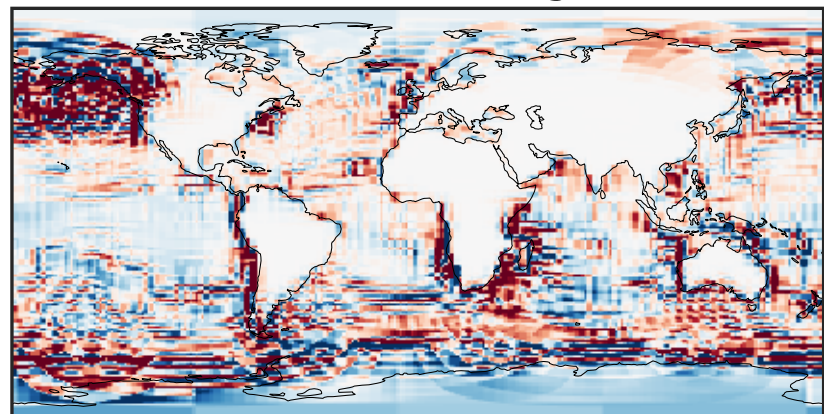
0.0000 0.1147 0.2294 0.3441 0.4588
ppb

Difference (1x1.25)
Dev - Ref, Dynamic Range



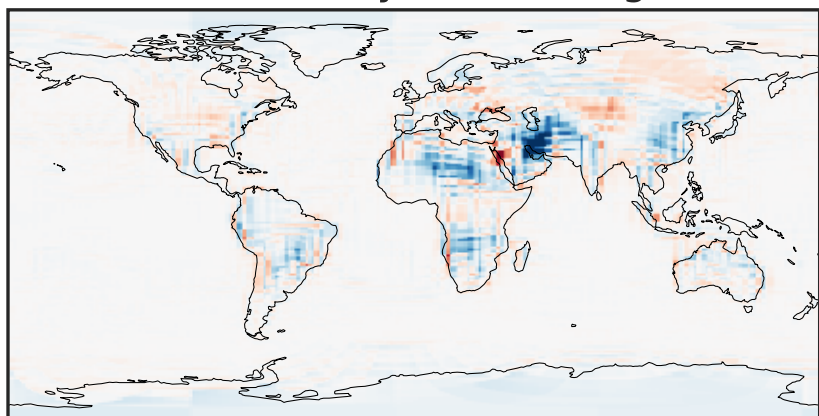
-0.1696 -0.0848 0.0000 0.0848 0.1696
ppb

Difference (1x1.25)
Dev - Ref, Restricted Range [5%,95%]



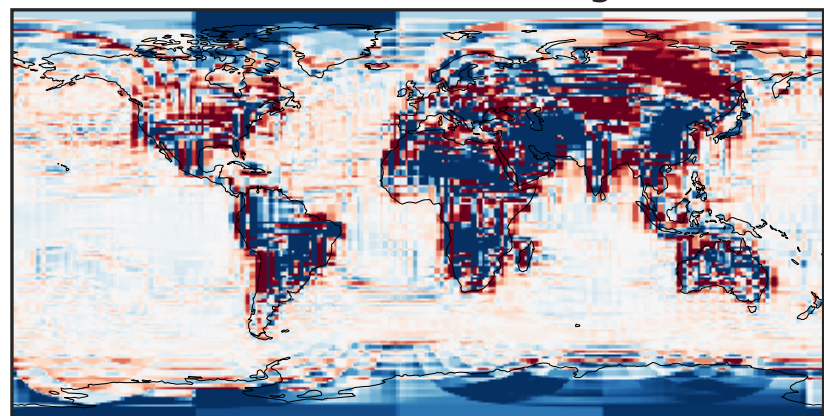
-0.008 0.000 0.008
ppb

Ratio (1x1.25)
Dev/Ref, Dynamic Range



1e-03 1e-02 1e-01 1 10 100 1000
unitless

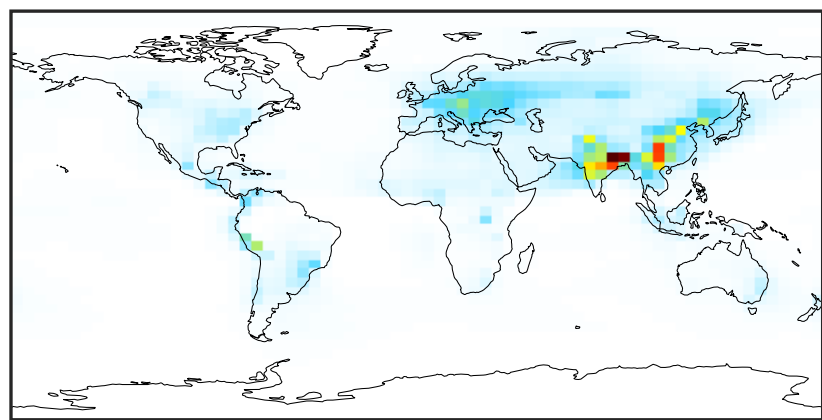
Ratio (1x1.25)
Dev/Ref, Fixed Range



0.50 0.75 1.00 1.50 2.00
unitless

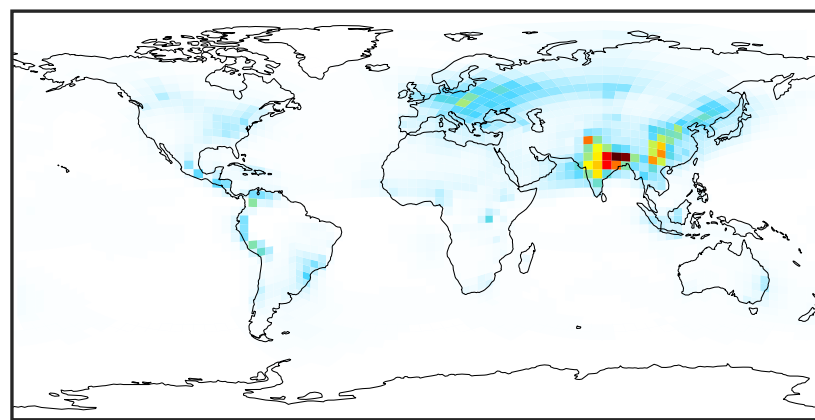
SpeciesConcVV_HMS (Oct2019)

14.3.0-rc.0 (Ref)
4.0x5.0



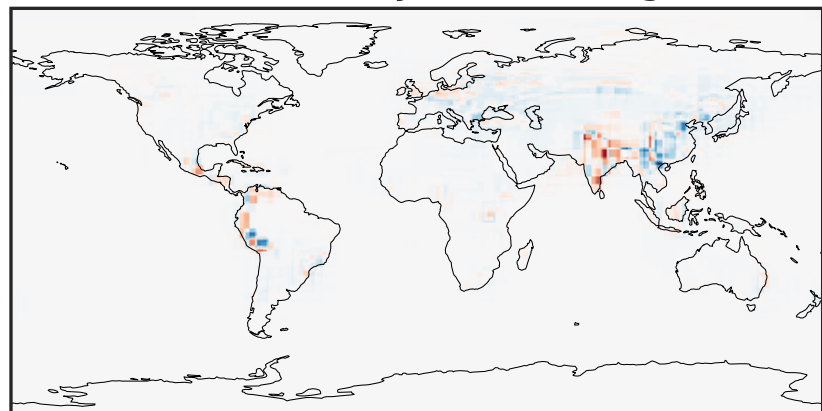
0.0005 0.1836 0.3667 0.5498 0.7328
ppb

14.3.0-rc.0 (Dev)
c24



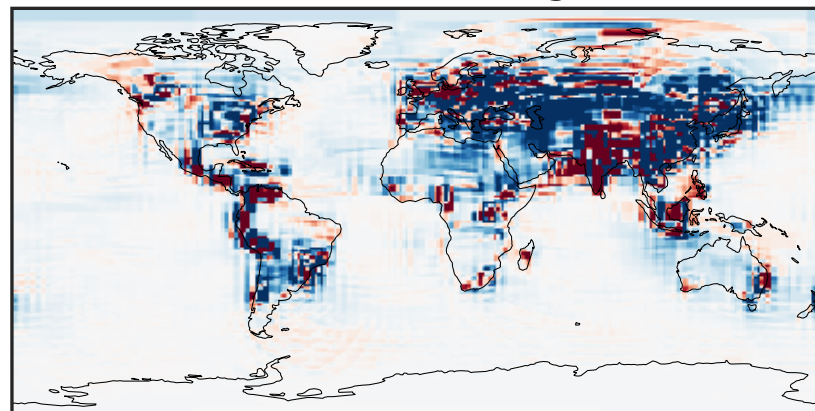
0.0005 0.1836 0.3667 0.5498 0.7328
ppb

Difference (1x1.25)
Dev - Ref, Dynamic Range



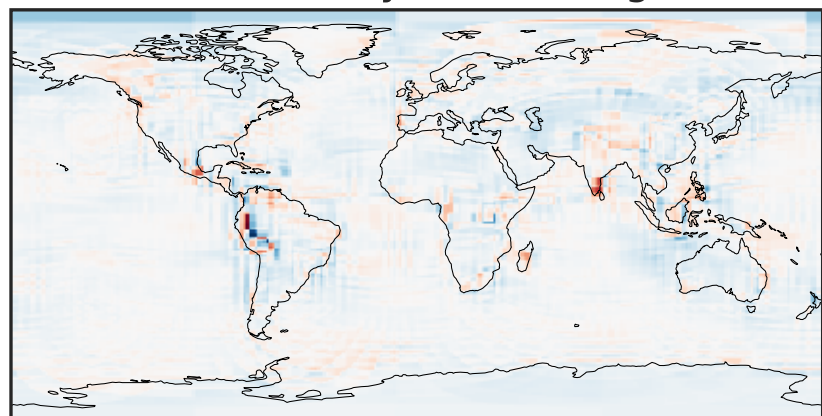
-0.3092 -0.1546 0.0000 0.1546 0.3092
ppb

Difference (1x1.25)
Dev - Ref, Restricted Range [5%,95%]



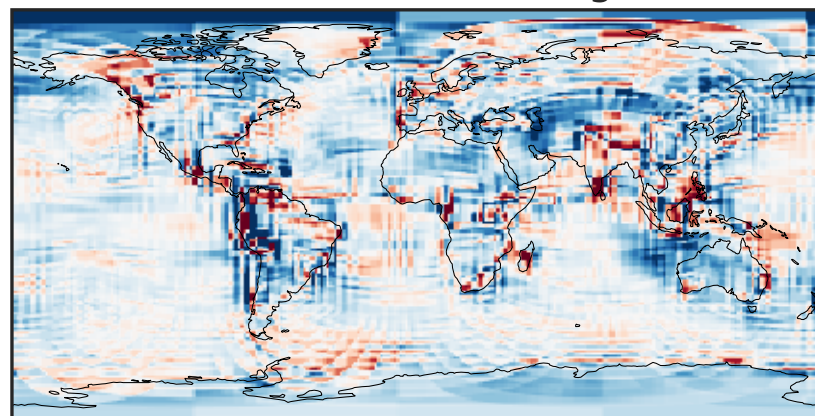
-0.006 0.000 0.006
ppb

Ratio (1x1.25)
Dev/Ref, Dynamic Range



1e-01 1 10
unitless

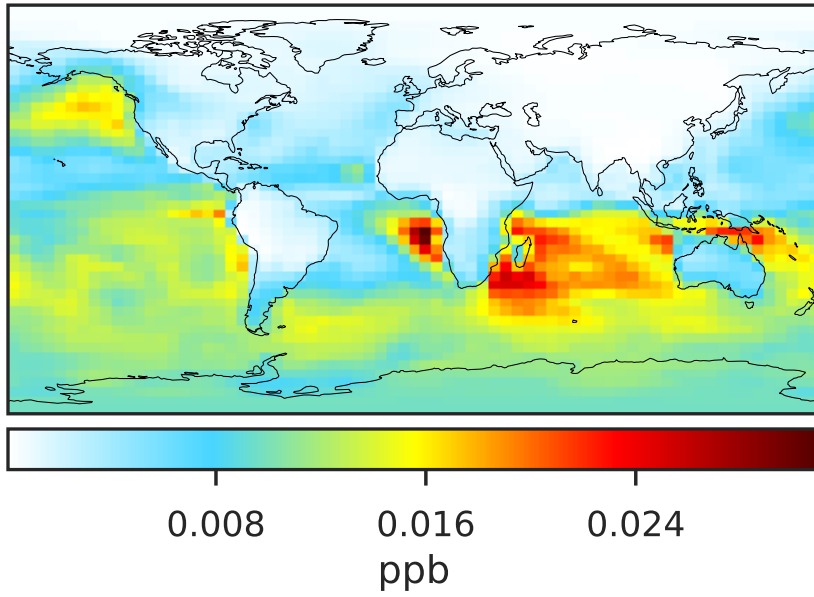
Ratio (1x1.25)
Dev/Ref, Fixed Range



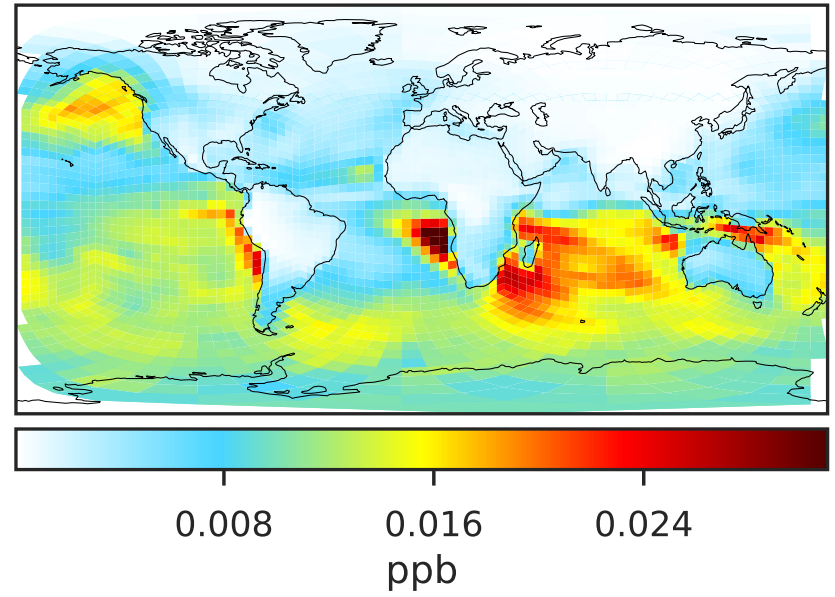
0.50 0.75 1.00 1.50 2.00
unitless

SpeciesConcVW_MSA (Oct2019)

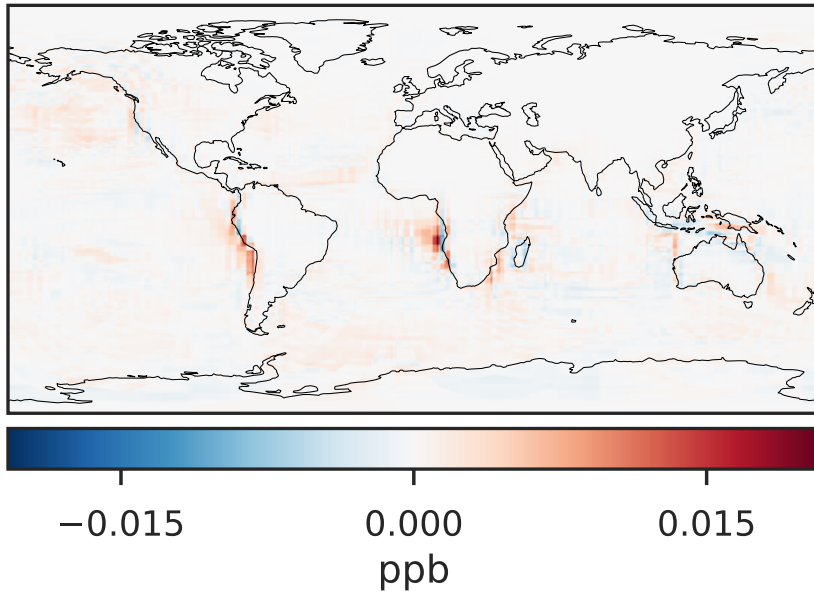
14.3.0-rc.0 (Ref)
4.0x5.0



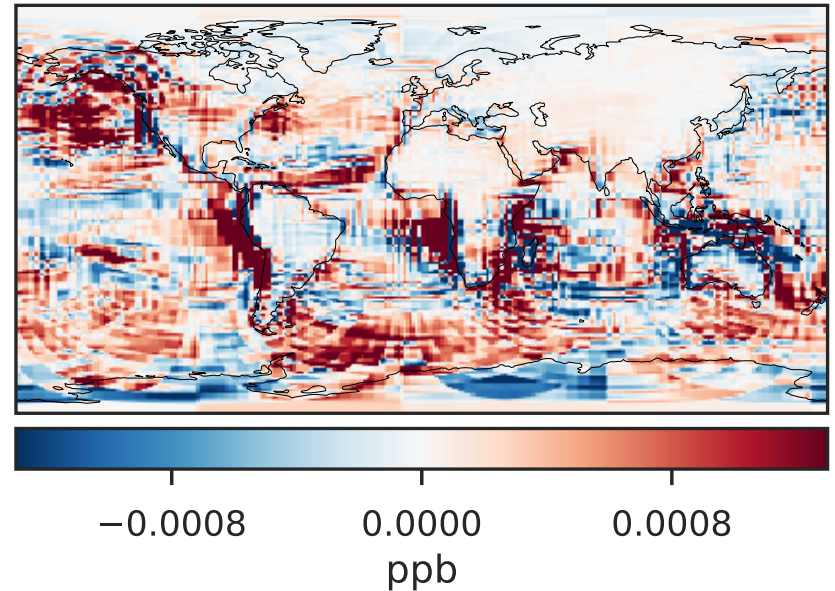
14.3.0-rc.0 (Dev)
c24



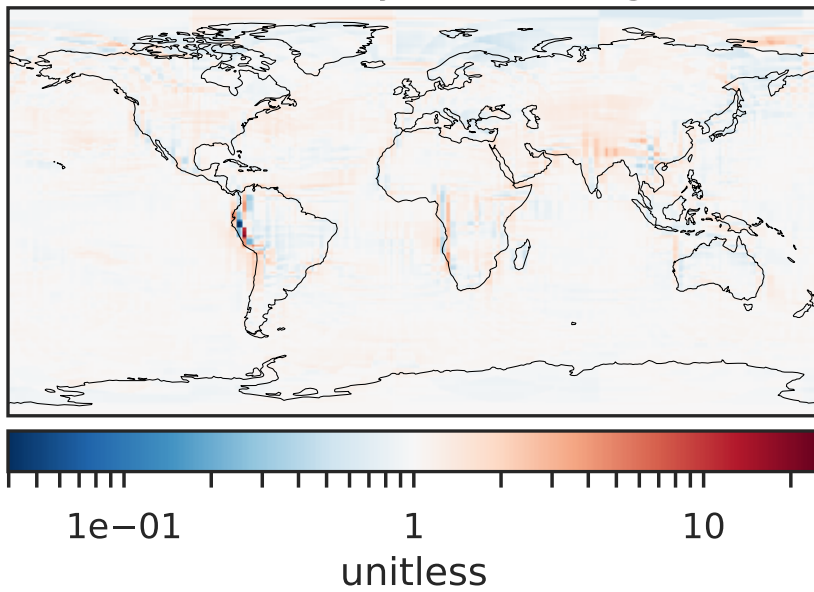
Difference (1x1.25)
Dev - Ref, Dynamic Range



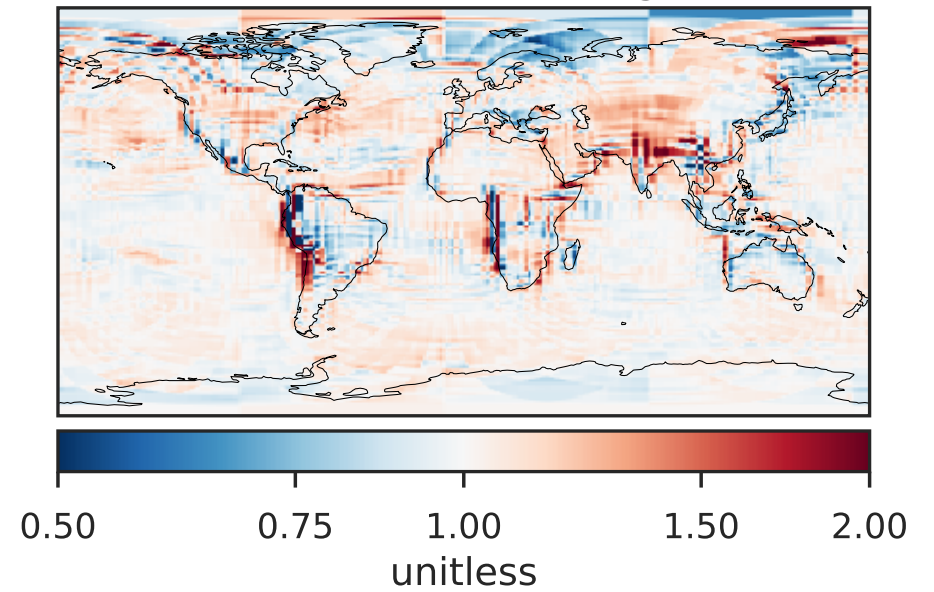
Difference (1x1.25)
Dev - Ref, Restricted Range [5%,95%]



Ratio (1x1.25)
Dev/Ref, Dynamic Range

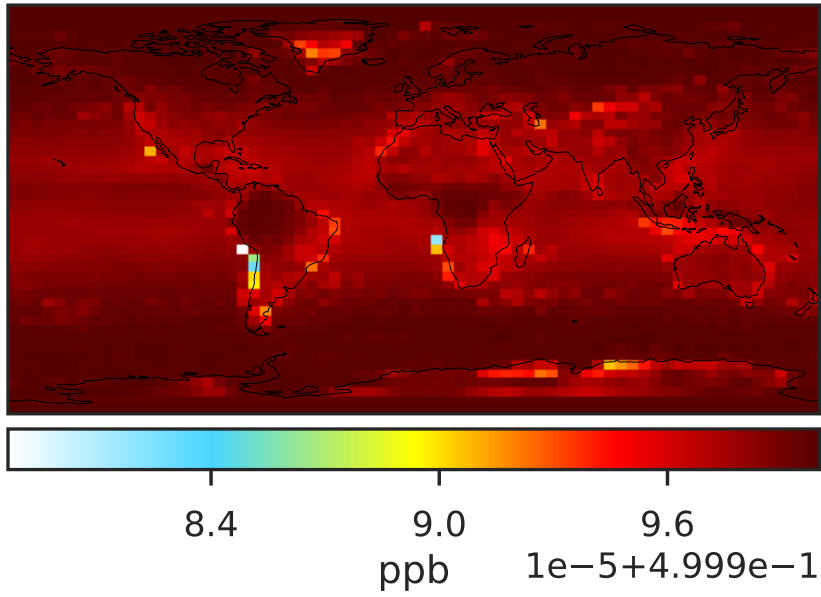


Ratio (1x1.25)
Dev/Ref, Fixed Range

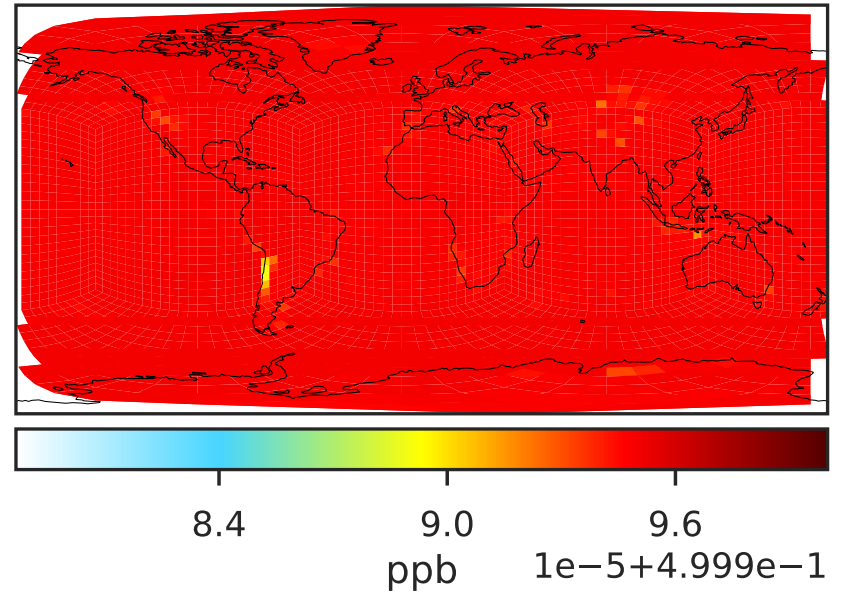


SpeciesConcVV_OCS (Oct2019)

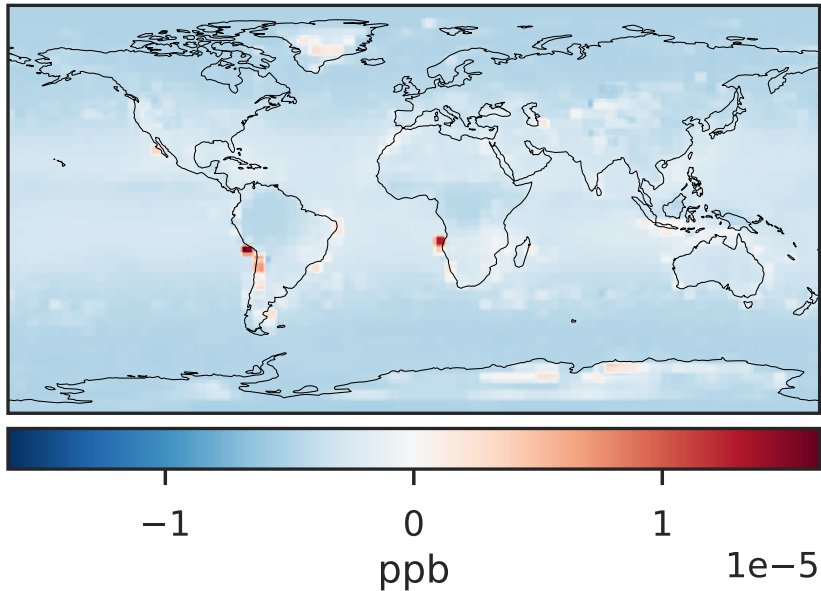
14.3.0-rc.0 (Ref)
4.0x5.0



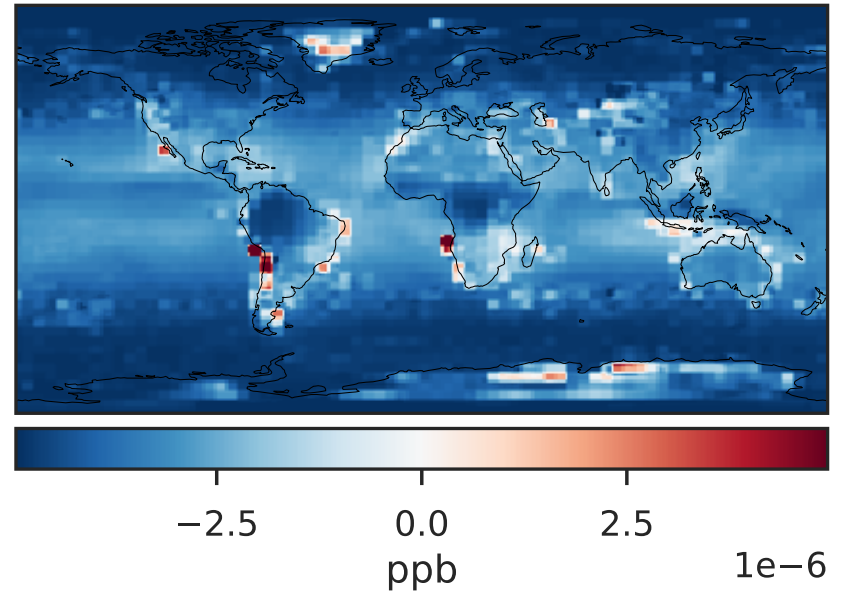
14.3.0-rc.0 (Dev)
c24



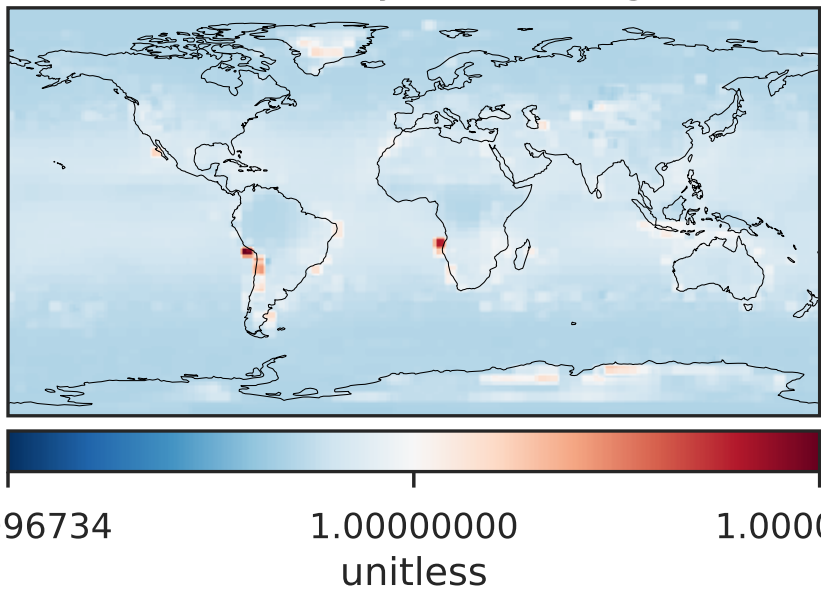
Difference (1x1.25)
Dev - Ref, Dynamic Range



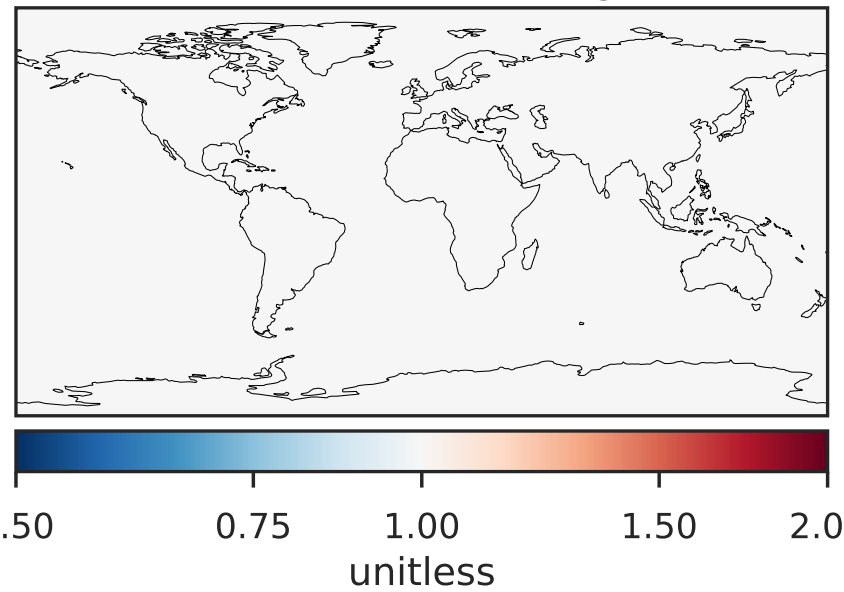
Difference (1x1.25)
Dev - Ref, Restricted Range [5%,95%]



Ratio (1x1.25)
Dev/Ref, Dynamic Range

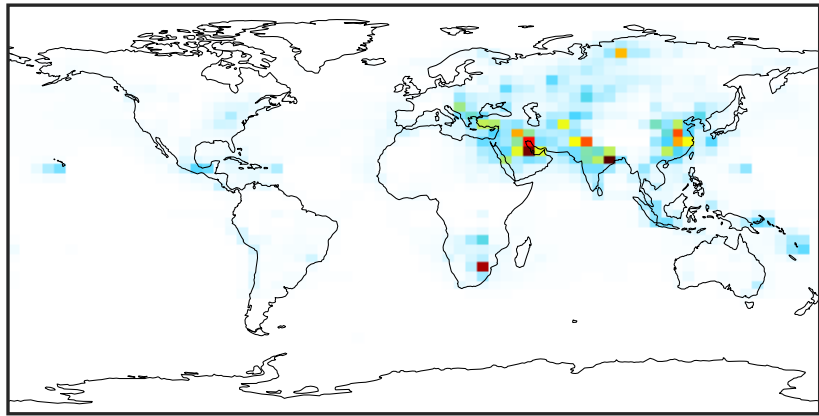


Ratio (1x1.25)
Dev/Ref, Fixed Range



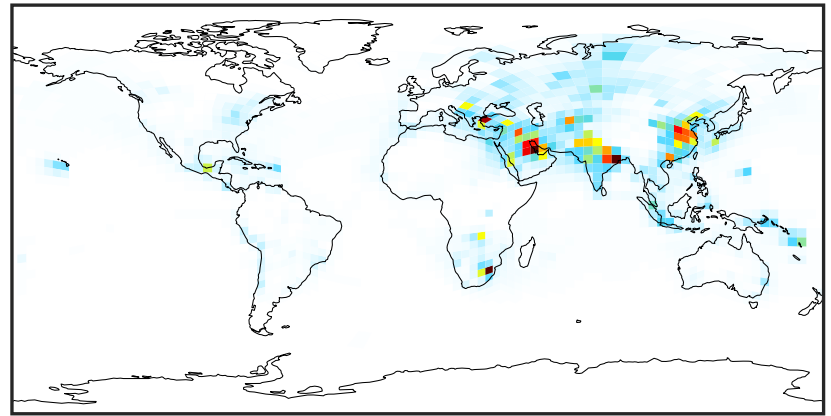
SpeciesConcVV_SO2 (Oct2019)

14.3.0-rc.0 (Ref)
4.0x5.0



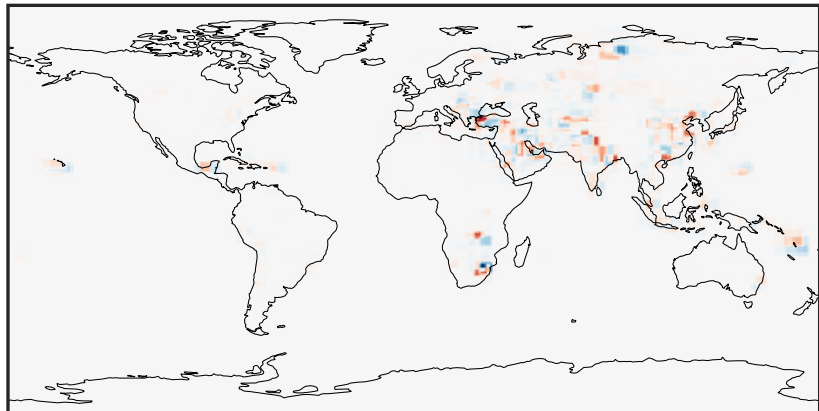
0.000 1.839 3.678 5.517 7.356
ppb

14.3.0-rc.0 (Dev)
c24



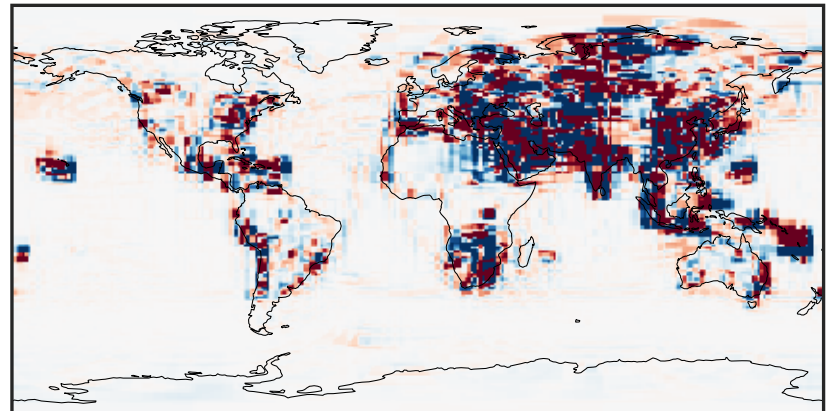
0.000 1.839 3.678 5.517 7.356
ppb

Difference (1x1.25)
Dev - Ref, Dynamic Range



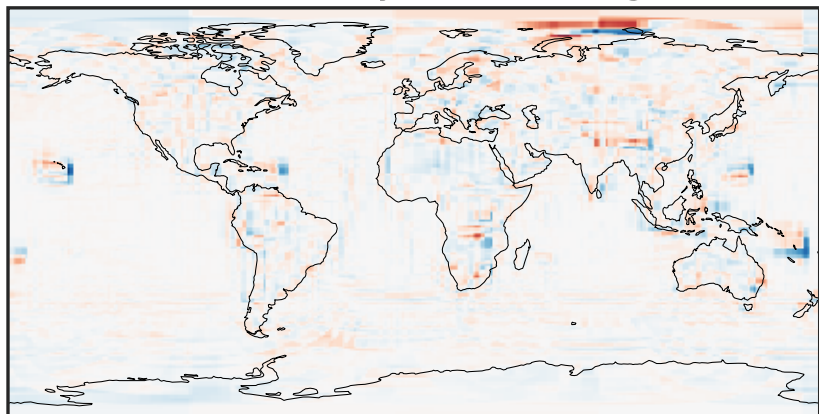
-5.25 -2.62 0.00 2.62 5.25
ppb

Difference (1x1.25)
Dev - Ref, Restricted Range [5%,95%]



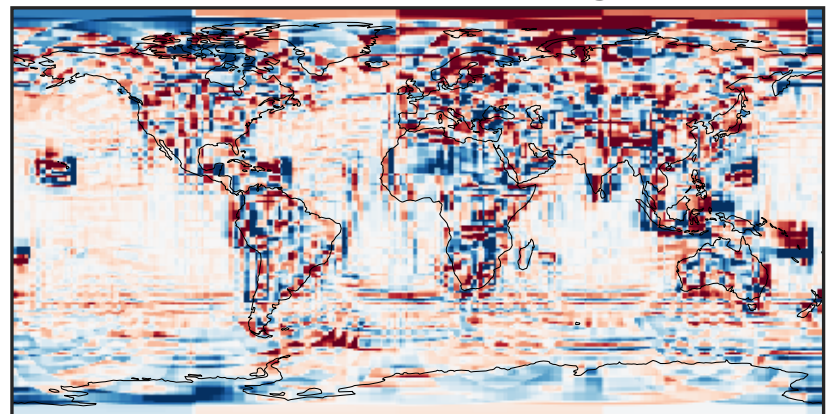
-0.0884 -0.0442 0.0000 0.0442 0.0884
ppb

Ratio (1x1.25)
Dev/Ref, Dynamic Range



1e-02 1e-01 1 10 100
unitless

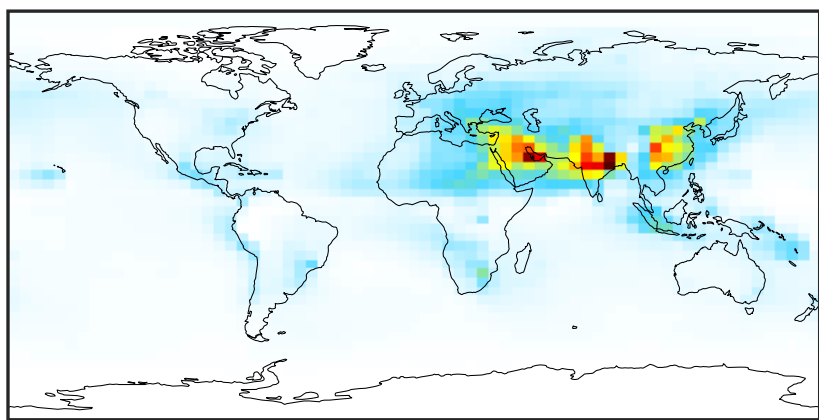
Ratio (1x1.25)
Dev/Ref, Fixed Range



0.50 0.75 1.00 1.50 2.00
unitless

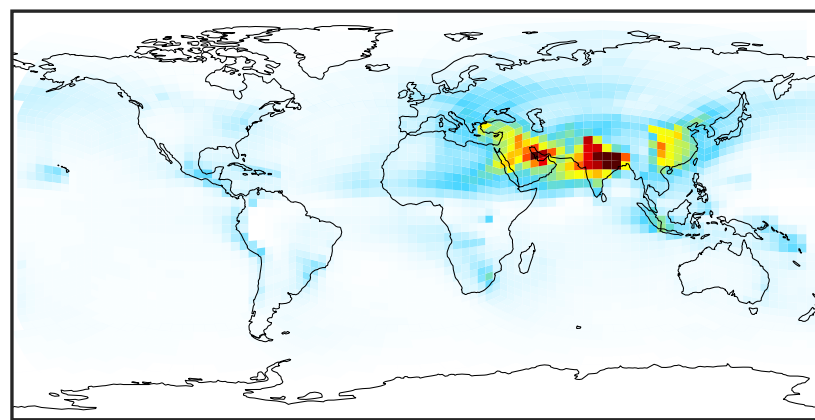
SpeciesConcVV_S04 (Oct2019)

14.3.0-rc.0 (Ref)
4.0x5.0



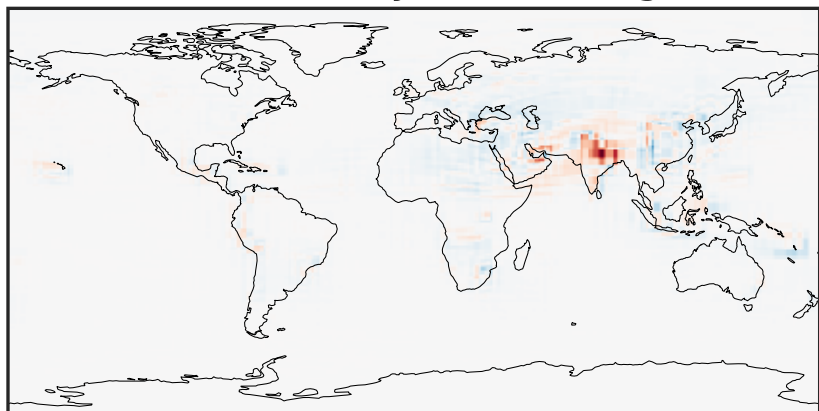
0.022 1.287 2.551 3.816 5.080
ppb

14.3.0-rc.0 (Dev)
c24



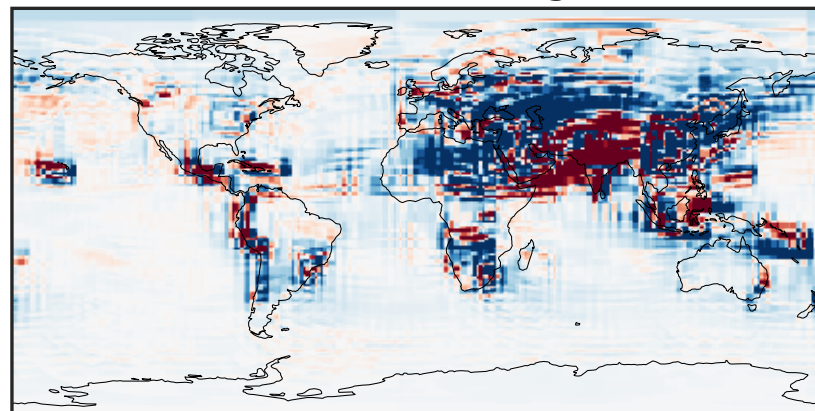
0.022 1.287 2.551 3.816 5.080
ppb

Difference (1x1.25)
Dev - Ref, Dynamic Range



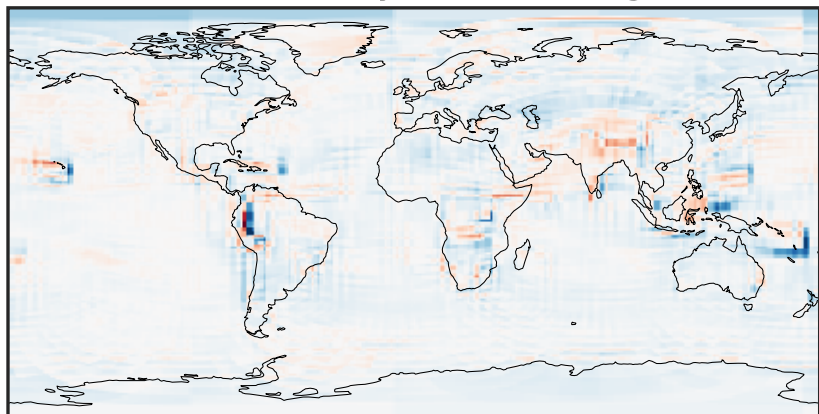
-3.030 -1.515 0.000 1.515 3.030
ppb

Difference (1x1.25)
Dev - Ref, Restricted Range [5%,95%]



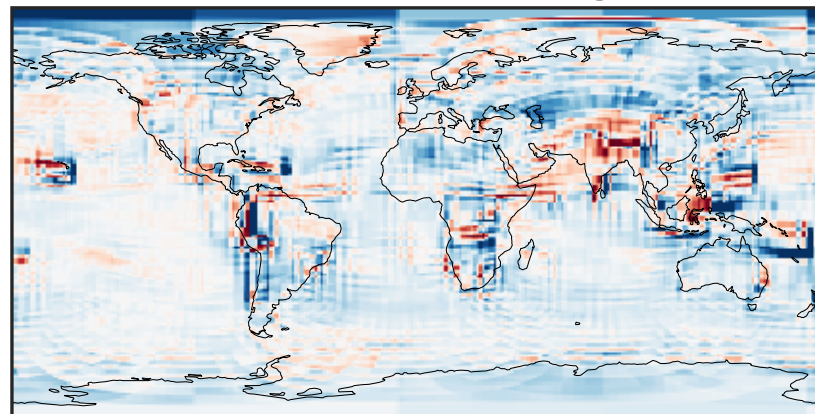
-0.1253 -0.0627 0.0000 0.0627 0.1253
ppb

Ratio (1x1.25)
Dev/Ref, Dynamic Range



0.140 0.570 1.000 4.071 7.142
unitless

Ratio (1x1.25)
Dev/Ref, Fixed Range



0.50 0.75 1.00 1.50 2.00
unitless