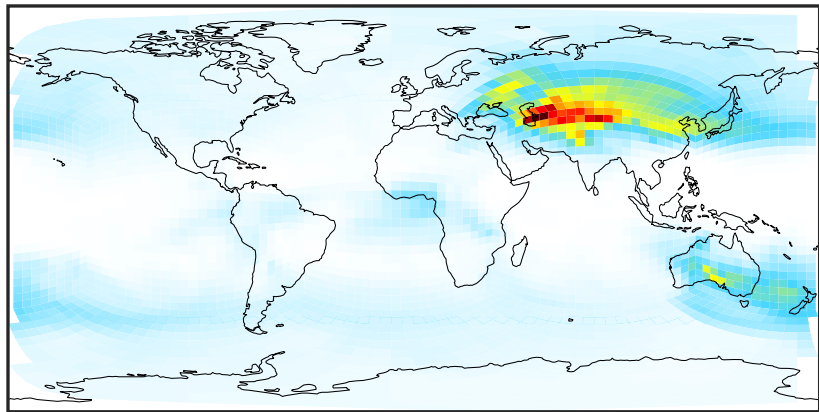


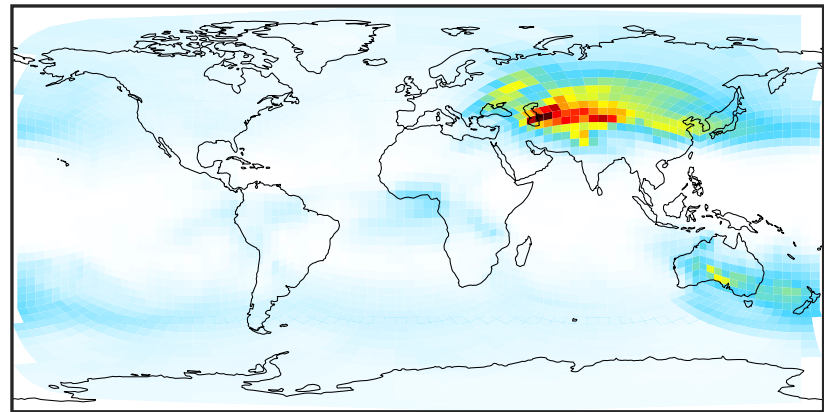
# SpeciesConcVV\_DST1 (Jan2019)

14.2.0-rc.2 (Ref)  
c24



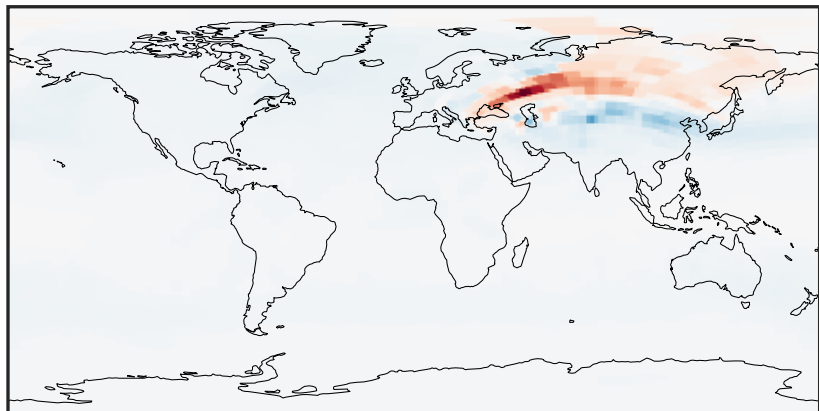
0.001 0.331 0.661 0.991 1.321  
 $\mu\text{g}/\text{m}^3$

14.3.0-rc.0 (Dev)  
c24



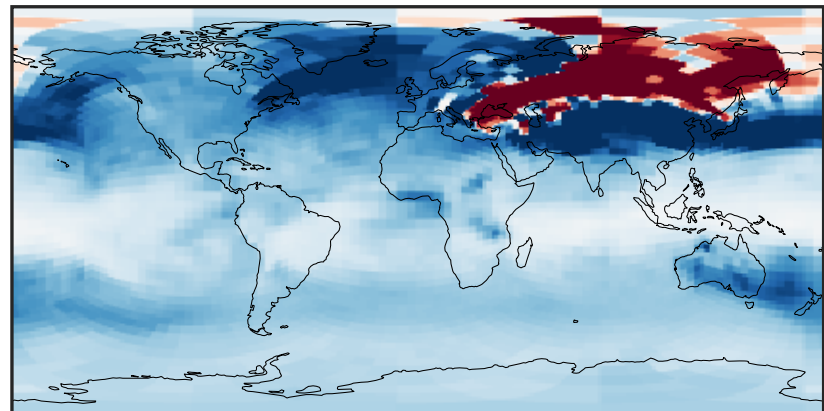
0.001 0.331 0.661 0.991 1.321  
 $\mu\text{g}/\text{m}^3$

Difference (1x1.25)  
Dev - Ref, Dynamic Range



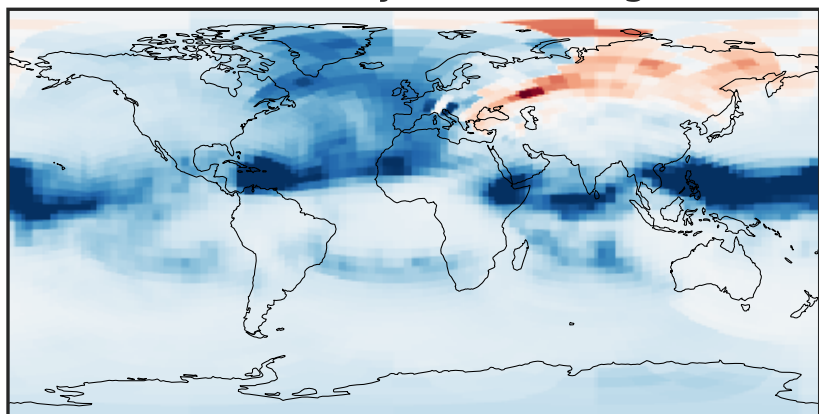
-0.0002 0.0000 0.0002  
 $\mu\text{g}/\text{m}^3$

Difference (1x1.25)  
Dev - Ref, Restricted Range [5%,95%]



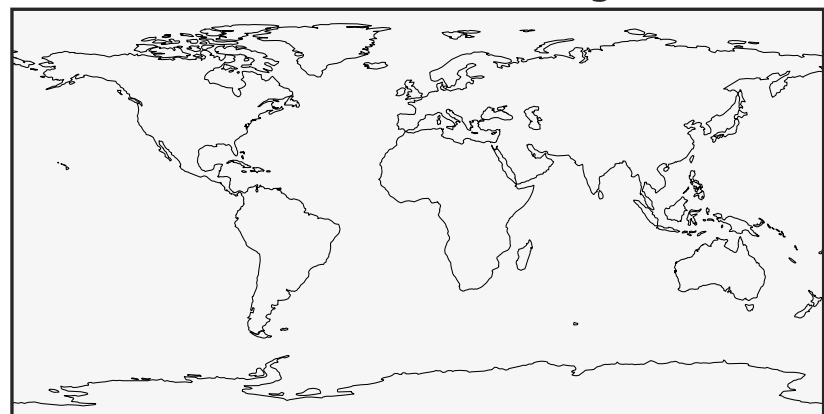
-1.5 0.0 1.5  
 $\mu\text{g}/\text{m}^3$   $1\text{e}-5$

Ratio (1x1.25)  
Dev/Ref, Dynamic Range



0.998969 0.999484 1.000000 1.000516 1.001032  
unitless

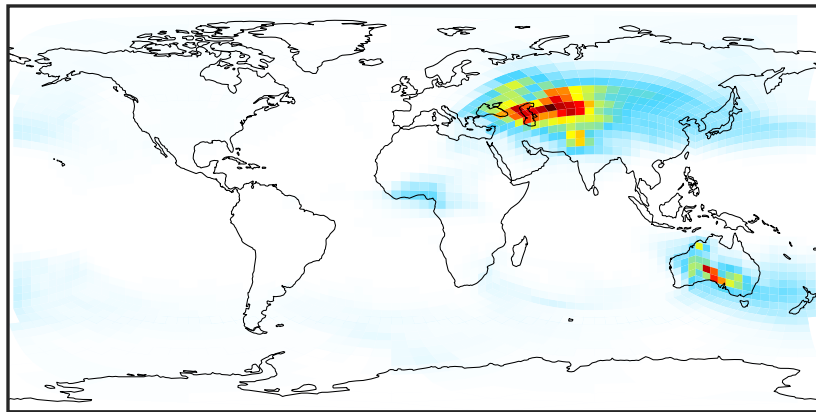
Ratio (1x1.25)  
Dev/Ref, Fixed Range



0.50 0.75 1.00 1.50 2.00  
unitless

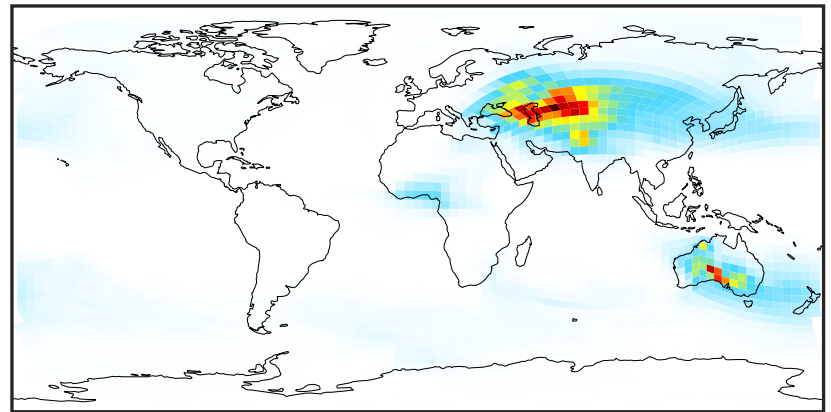
# SpeciesConcVV\_DST2 (Jan2019)

14.2.0-rc.2 (Ref)  
c24



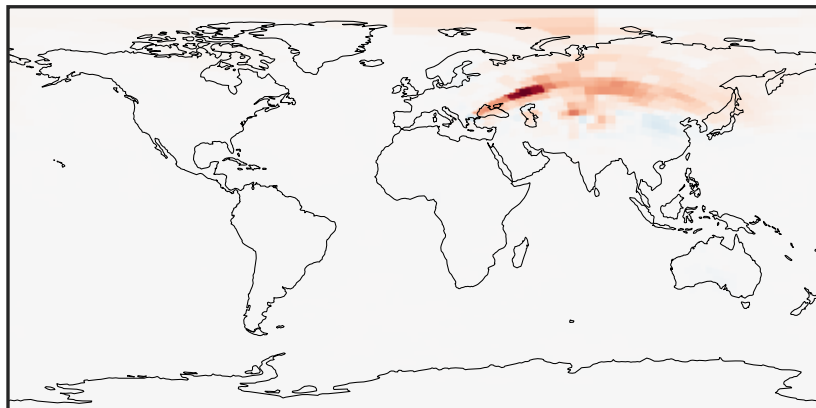
0.0000 0.1694 0.3387 0.5081 0.6774  
 $\mu\text{g}/\text{m}^3$

14.3.0-rc.0 (Dev)  
c24



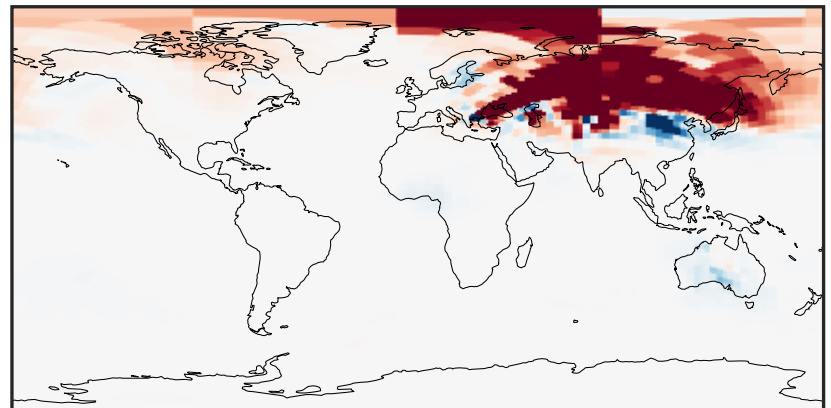
0.0000 0.1694 0.3387 0.5081 0.6774  
 $\mu\text{g}/\text{m}^3$

Difference (1x1.25)  
Dev - Ref, Dynamic Range



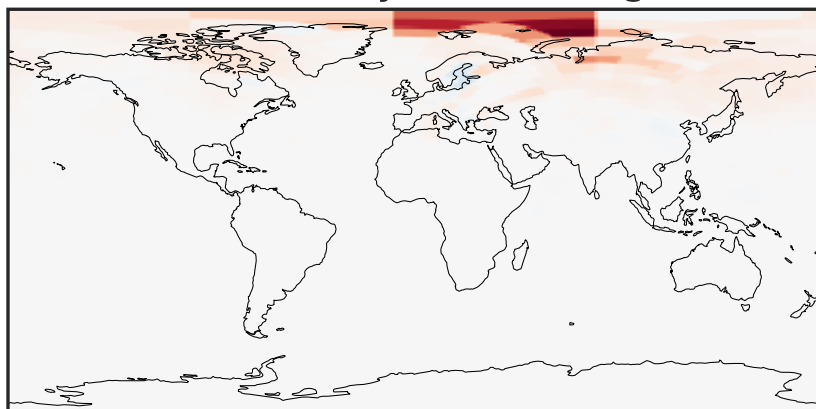
-2 0 2  
 $\mu\text{g}/\text{m}^3$   $1\text{e}-5$

Difference (1x1.25)  
Dev - Ref, Restricted Range [5%,95%]



-2 0 2  
 $\mu\text{g}/\text{m}^3$   $1\text{e}-6$

Ratio (1x1.25)  
Dev/Ref, Dynamic Range



0.998762 0.999381 1.000000 1.000620 1.001239  
unitless

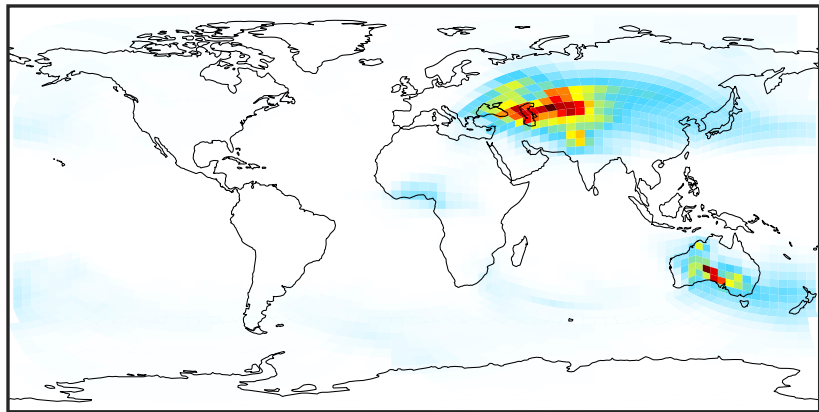
Ratio (1x1.25)  
Dev/Ref, Fixed Range



0.50 0.75 1.00 1.50 2.00  
unitless

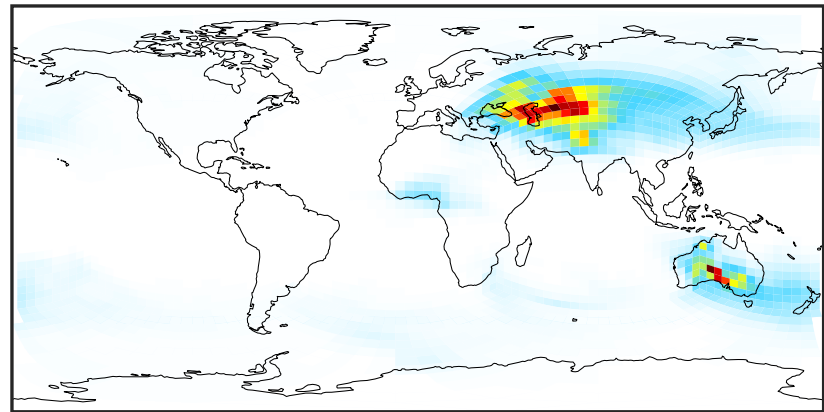
# SpeciesConcVV\_DST3 (Jan2019)

14.2.0-rc.2 (Ref)  
c24



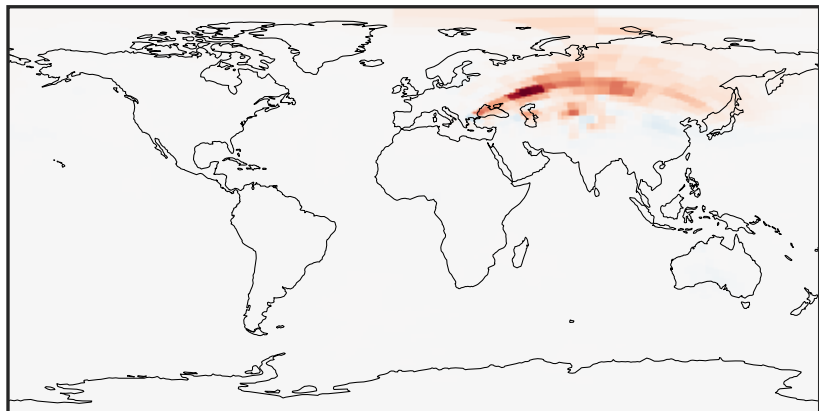
0.0000 0.1878 0.3755 0.5633 0.7510  
 $\mu\text{g}/\text{m}^3$

14.3.0-rc.0 (Dev)  
c24



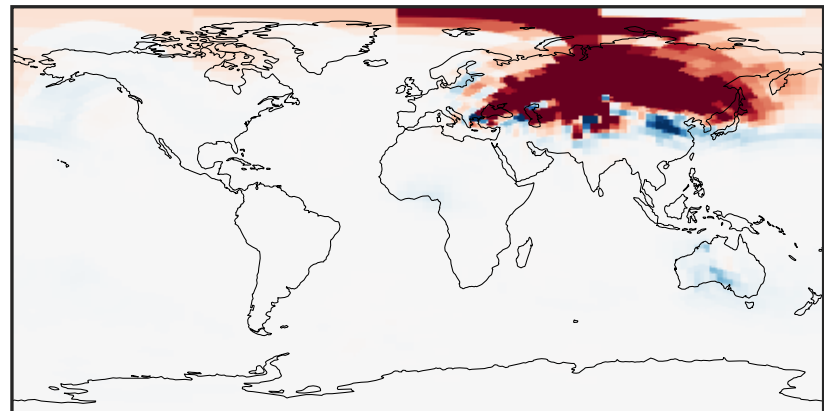
0.0000 0.1878 0.3755 0.5633 0.7510  
 $\mu\text{g}/\text{m}^3$

Difference (1x1.25)  
Dev - Ref, Dynamic Range



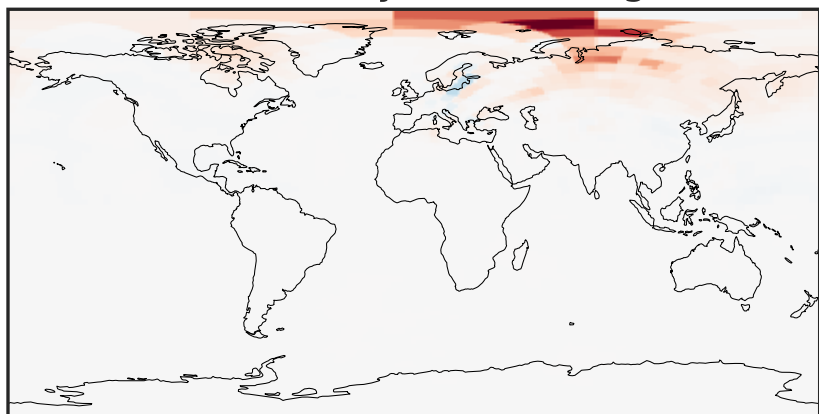
-2.5 0.0 2.5  
 $\mu\text{g}/\text{m}^3$   $1\text{e}-5$

Difference (1x1.25)  
Dev - Ref, Restricted Range [5%,95%]



-2 0 2  
 $\mu\text{g}/\text{m}^3$   $1\text{e}-6$

Ratio (1x1.25)  
Dev/Ref, Dynamic Range



0.998790 0.999395 1.000000 1.000606 1.001211  
unitless

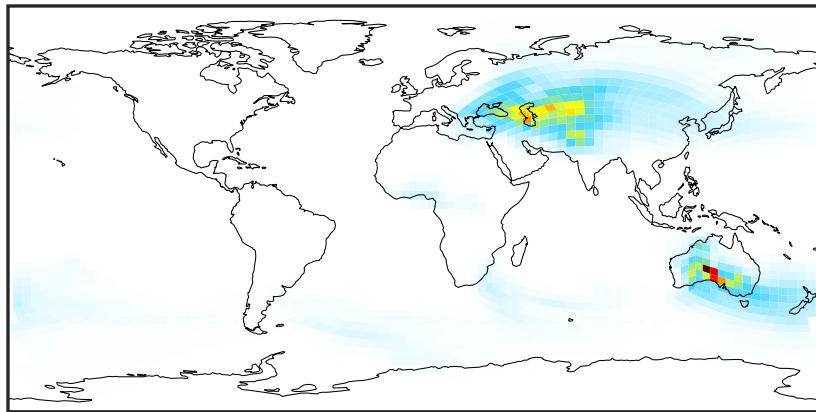
Ratio (1x1.25)  
Dev/Ref, Fixed Range



0.50 0.75 1.00 1.50 2.00  
unitless

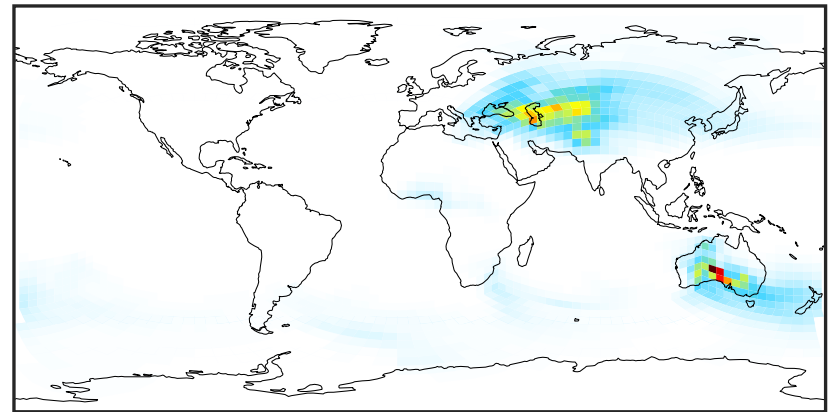
# SpeciesConcVV\_DST4 (Jan2019)

14.2.0-rc.2 (Ref)  
c24



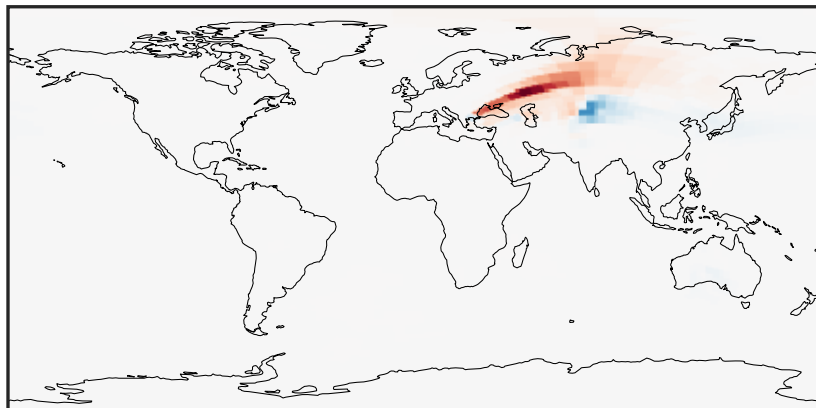
0.0000 0.0687 0.1374 0.2061 0.2749  
 $\mu\text{g}/\text{m}^3$

14.3.0-rc.0 (Dev)  
c24



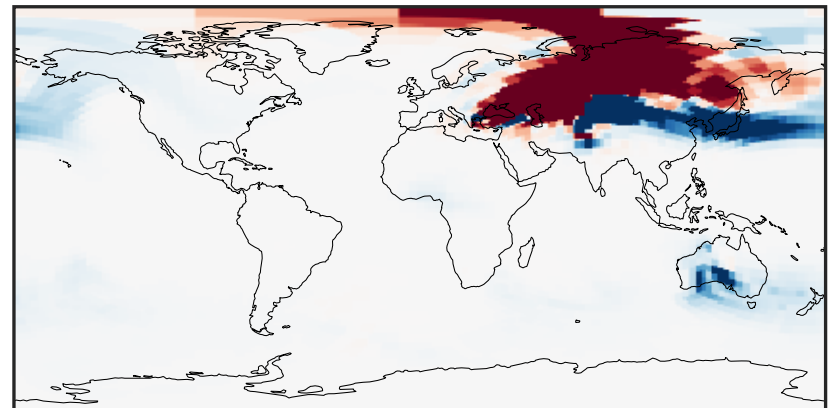
0.0000 0.0687 0.1374 0.2061 0.2749  
 $\mu\text{g}/\text{m}^3$

Difference (1x1.25)  
Dev - Ref, Dynamic Range



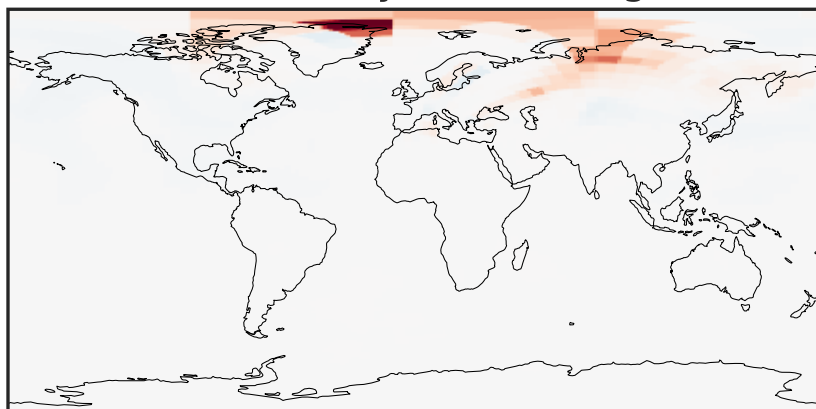
-1 0 1  
 $\mu\text{g}/\text{m}^3$   $1\text{e}-5$

Difference (1x1.25)  
Dev - Ref, Restricted Range [5%,95%]



-2.5 0.0 2.5  
 $\mu\text{g}/\text{m}^3$   $1\text{e}-7$

Ratio (1x1.25)  
Dev/Ref, Dynamic Range



0.997594 0.998797 1.000000 1.001206 1.002412  
unitless

Ratio (1x1.25)  
Dev/Ref, Fixed Range

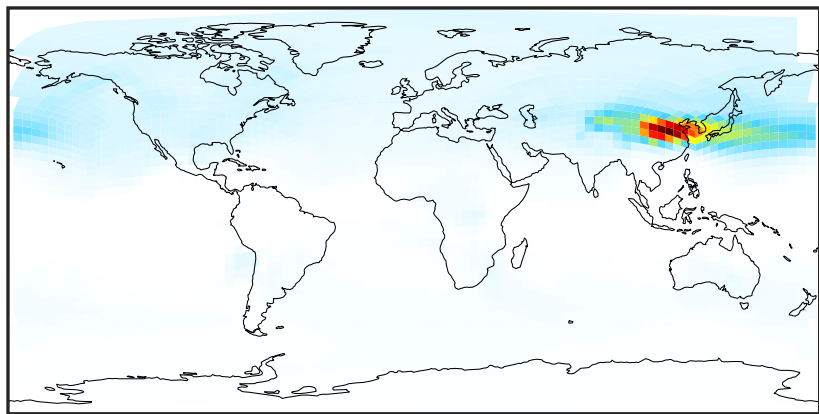


0.50 0.75 1.00 1.50 2.00  
unitless



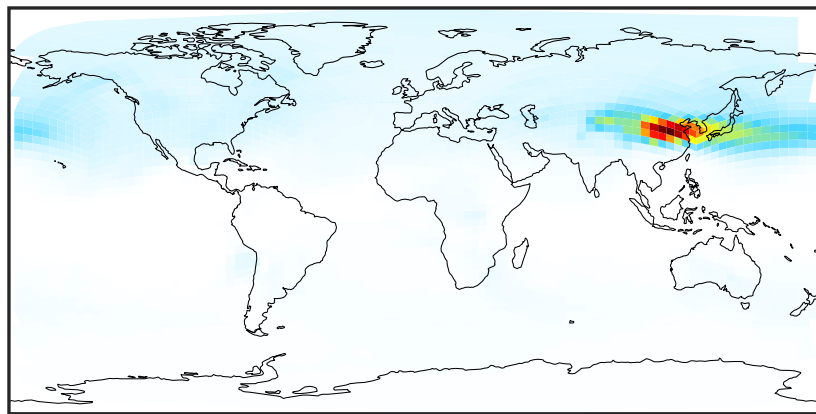
# SpeciesConcVV\_NH4 (Jan2019)

14.2.0-rc.2 (Ref)  
c24



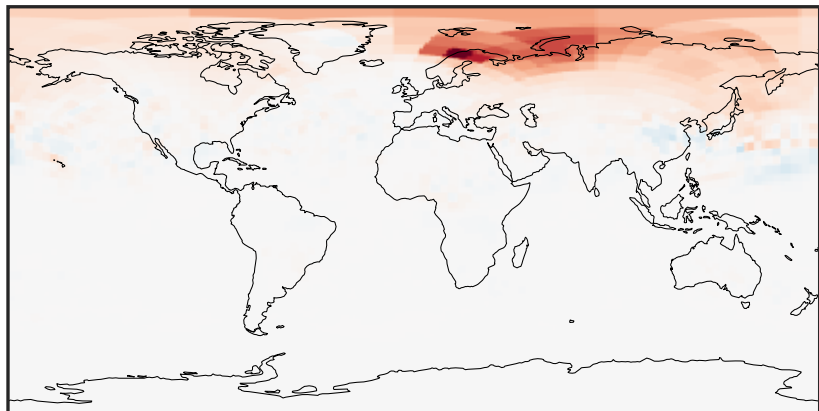
0.0001 0.1913 0.3824 0.5736 0.7648  
 $\mu\text{g}/\text{m}^3$

14.3.0-rc.0 (Dev)  
c24



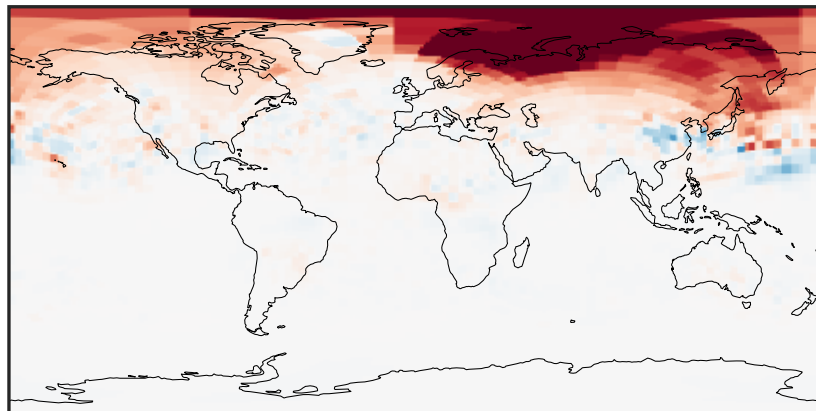
0.0001 0.1913 0.3824 0.5736 0.7648  
 $\mu\text{g}/\text{m}^3$

Difference (1x1.25)  
Dev - Ref, Dynamic Range



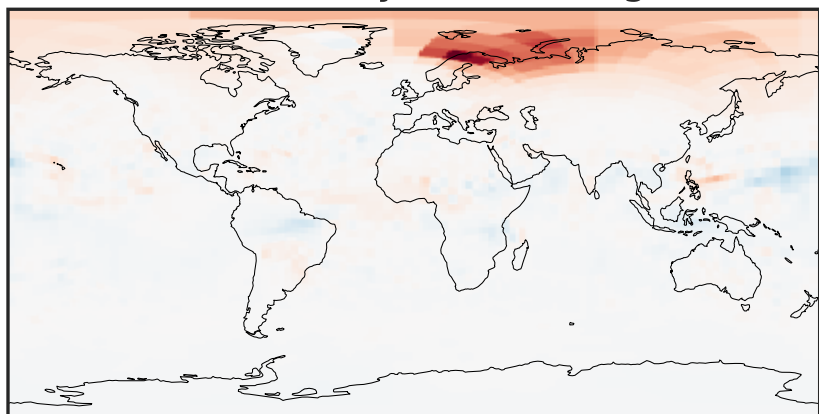
-0.0015 0.0000 0.0015  
 $\mu\text{g}/\text{m}^3$

Difference (1x1.25)  
Dev - Ref, Restricted Range [5%,95%]



-0.0004 0.0000 0.0004  
 $\mu\text{g}/\text{m}^3$

Ratio (1x1.25)  
Dev/Ref, Dynamic Range



0.9309 0.9654 1.0000 1.0371 1.0743  
unitless

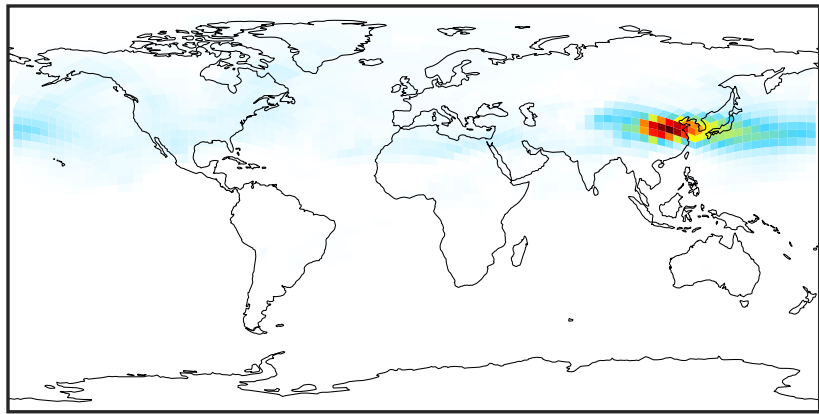
Ratio (1x1.25)  
Dev/Ref, Fixed Range



0.50 0.75 1.00 1.50 2.00  
unitless

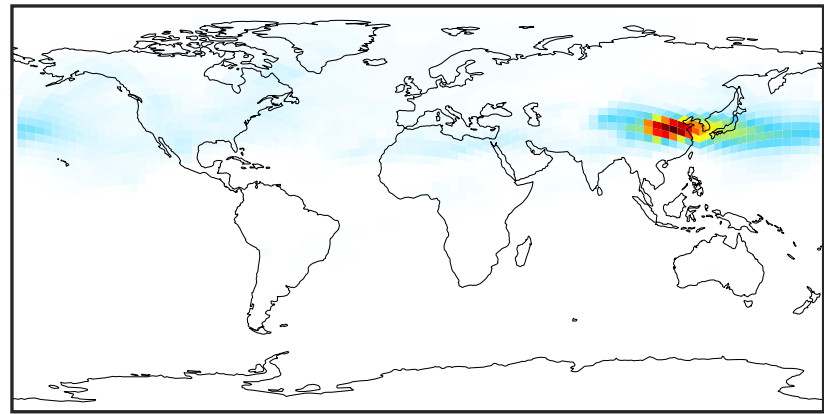
# SpeciesConcVV\_NIT (Jan2019)

14.2.0-rc.2 (Ref)  
c24



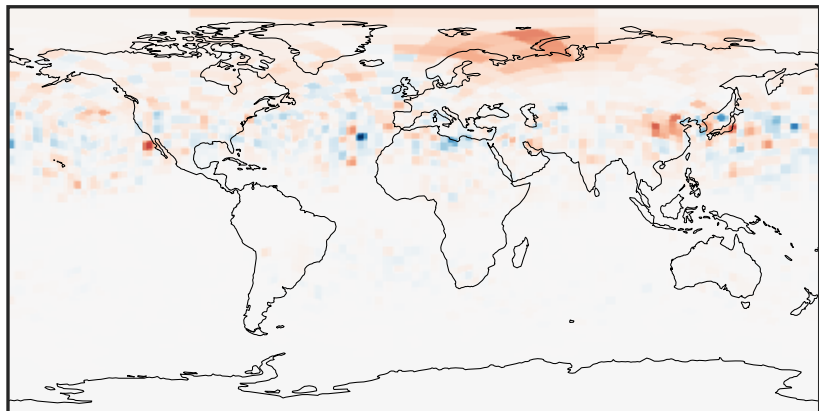
0.000 0.284 0.567 0.851 1.134  
µg/m<sup>3</sup>

14.3.0-rc.0 (Dev)  
c24



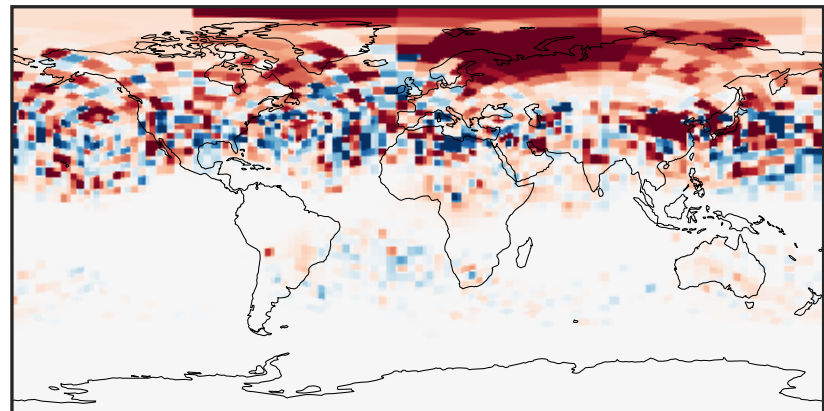
0.000 0.284 0.567 0.851 1.134  
µg/m<sup>3</sup>

Difference (1x1.25)  
Dev - Ref, Dynamic Range



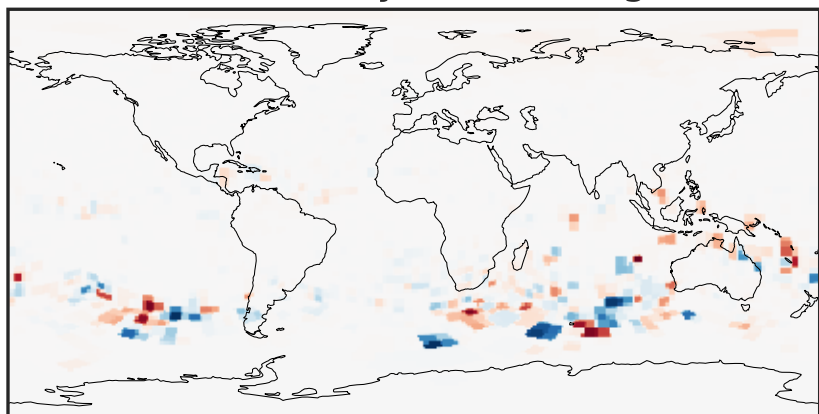
-0.003 0.000 0.003  
µg/m<sup>3</sup>

Difference (1x1.25)  
Dev - Ref, Restricted Range [5%,95%]



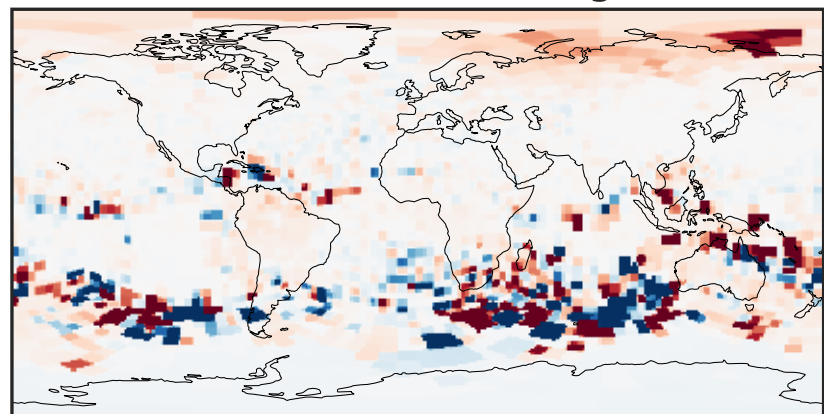
-0.0005 0.0000 0.0005  
µg/m<sup>3</sup>

Ratio (1x1.25)  
Dev/Ref, Dynamic Range



1e-03 1e-02 1e-01 1 10 100 1000  
unitless

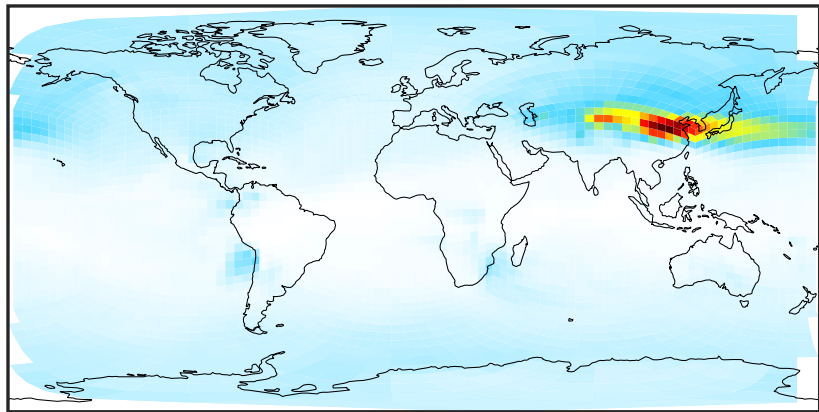
Ratio (1x1.25)  
Dev/Ref, Fixed Range



0.50 0.75 1.00 1.50 2.00  
unitless

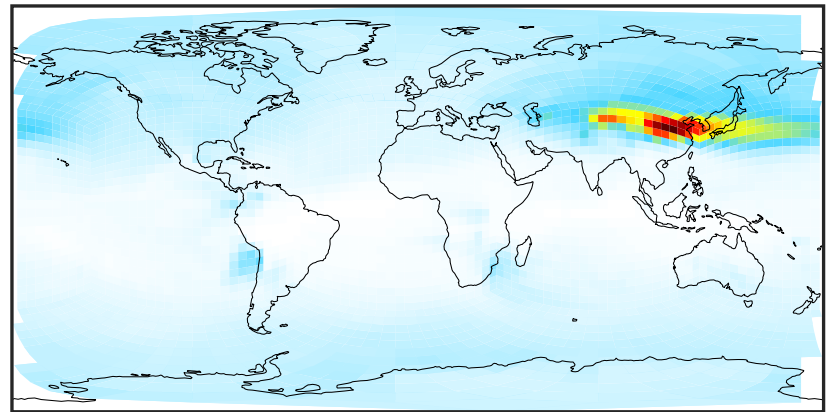
# SpeciesConcVV\_SO4 (Jan2019)

14.2.0-rc.2 (Ref)  
c24



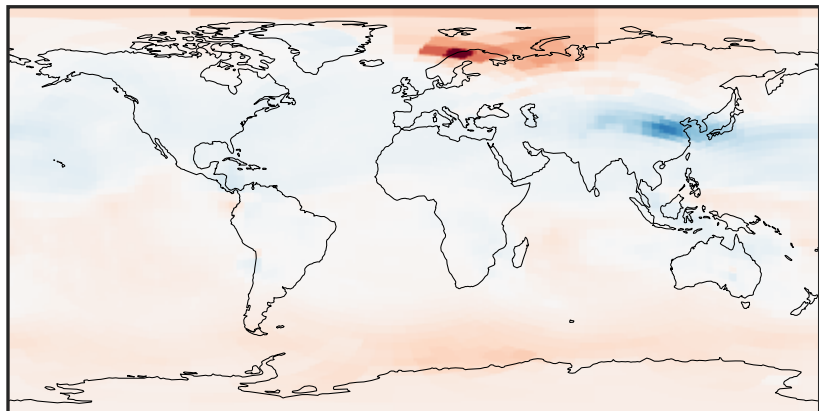
0.005 0.289 0.572 0.856 1.140  
 $\mu\text{g}/\text{m}^3$

14.3.0-rc.0 (Dev)  
c24



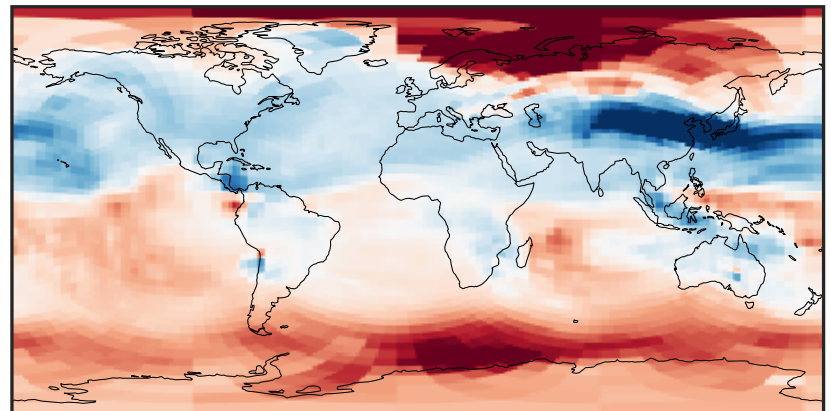
0.005 0.289 0.572 0.856 1.140  
 $\mu\text{g}/\text{m}^3$

Difference (1x1.25)  
Dev - Ref, Dynamic Range



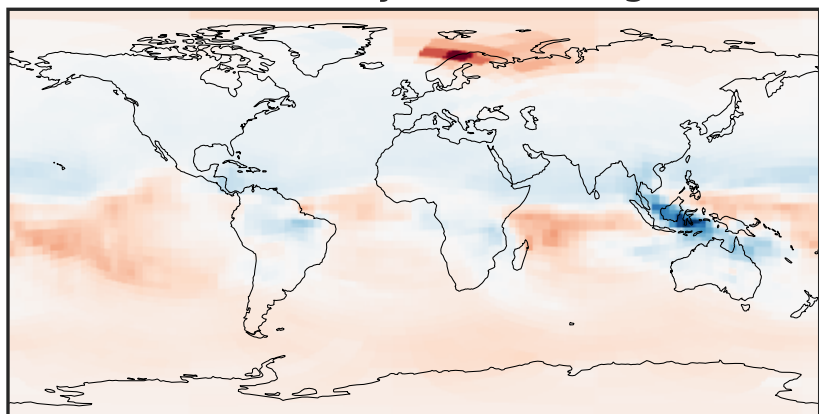
-0.002 0.000 0.002  
 $\mu\text{g}/\text{m}^3$

Difference (1x1.25)  
Dev - Ref, Restricted Range [5%,95%]



-0.0004 0.0000 0.0004  
 $\mu\text{g}/\text{m}^3$

Ratio (1x1.25)  
Dev/Ref, Dynamic Range



0.9632 0.9816 1.0000 1.0191 1.0382  
unitless

Ratio (1x1.25)  
Dev/Ref, Fixed Range

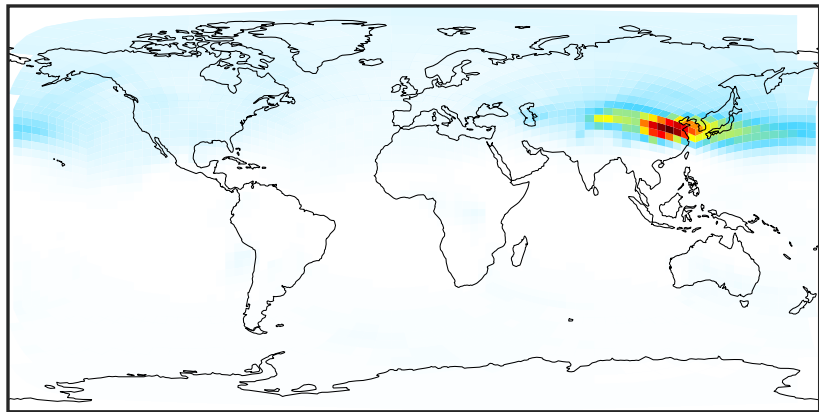


0.50 0.75 1.00 1.50 2.00  
unitless



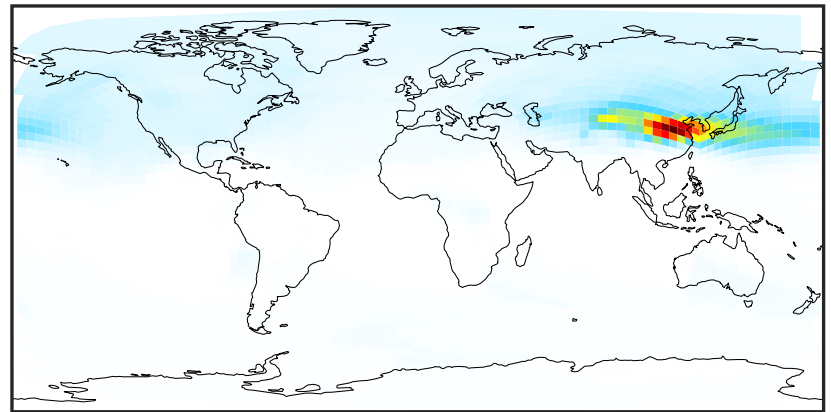
# SpeciesConcVV\_HMS (Jan2019)

14.2.0-rc.2 (Ref)  
c24



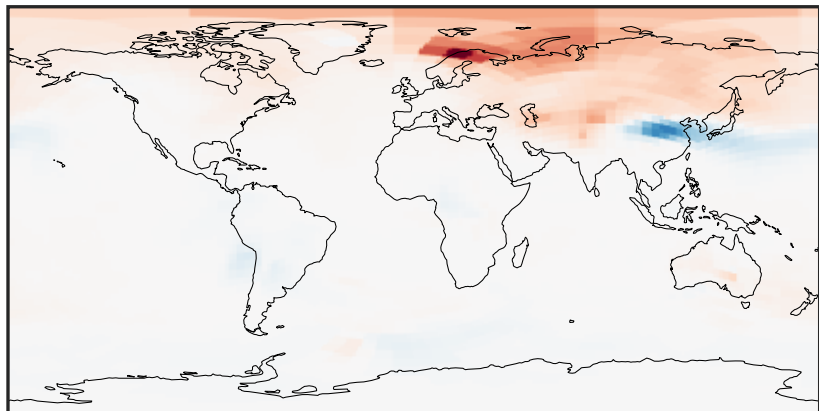
0.0001 0.0385 0.0769 0.1154 0.1538  
 $\mu\text{g}/\text{m}^3$

14.3.0-rc.0 (Dev)  
c24



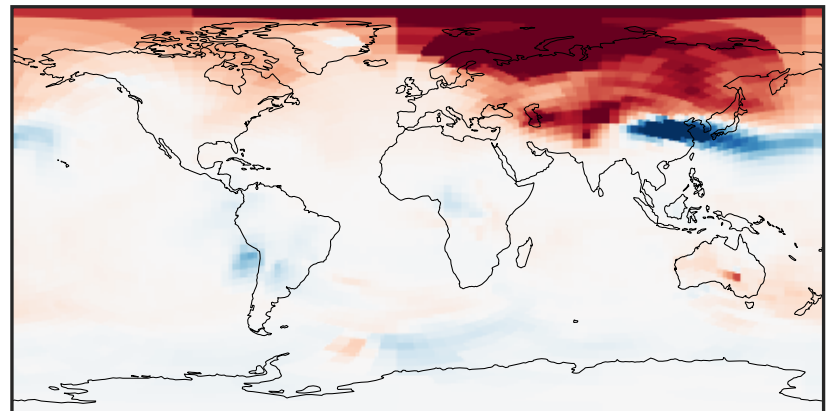
0.0001 0.0385 0.0769 0.1154 0.1538  
 $\mu\text{g}/\text{m}^3$

Difference (1x1.25)  
Dev - Ref, Dynamic Range



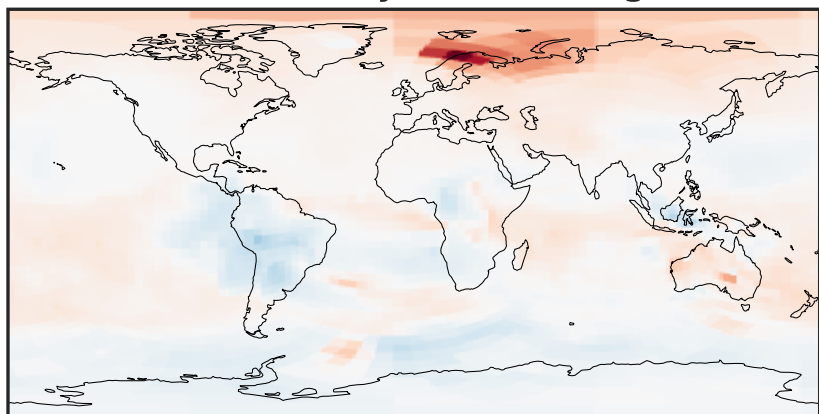
-0.0006 0.0000 0.0006  
 $\mu\text{g}/\text{m}^3$

Difference (1x1.25)  
Dev - Ref, Restricted Range [5%,95%]



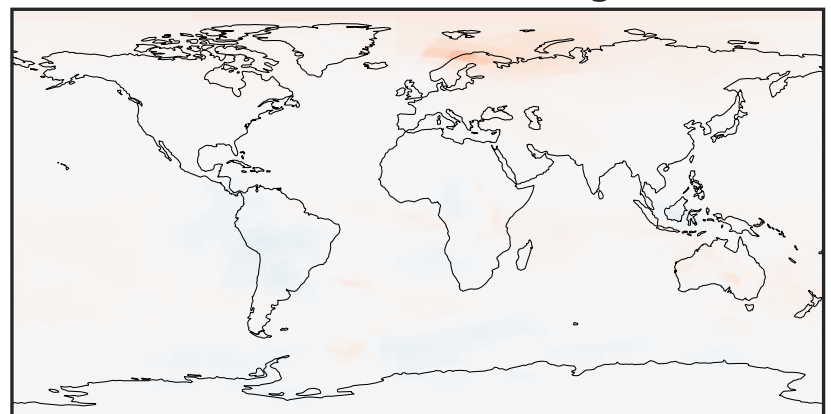
-0.0002 0.0000 0.0002  
 $\mu\text{g}/\text{m}^3$

Ratio (1x1.25)  
Dev/Ref, Dynamic Range



0.8212 0.9106 1.0000 1.1088 1.2177  
unitless

Ratio (1x1.25)  
Dev/Ref, Fixed Range

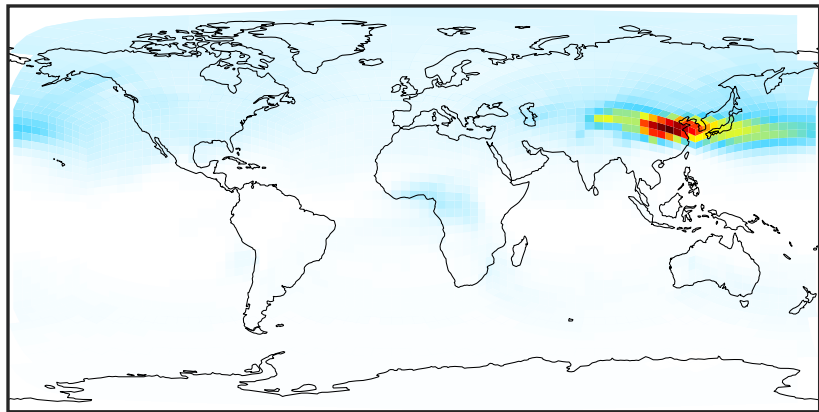


0.50 0.75 1.00 1.50 2.00  
unitless



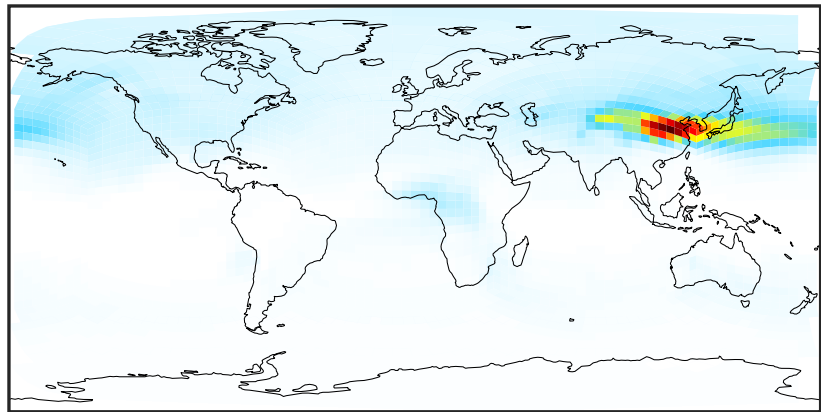
# SpeciesConcVV\_BCPI (Jan2019)

14.2.0-rc.2 (Ref)  
c24



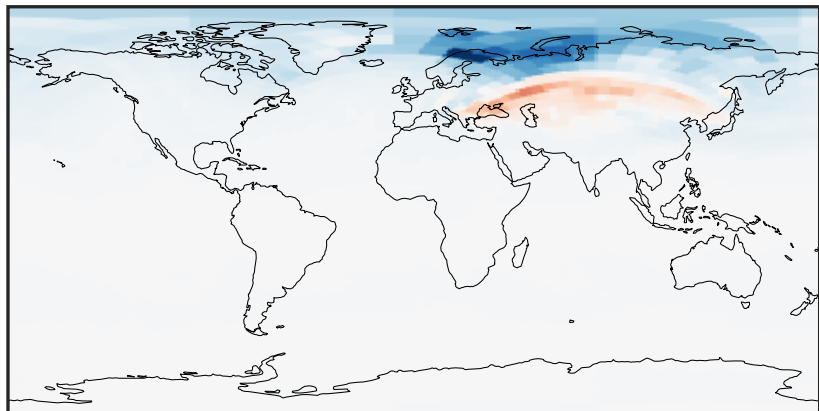
0.0000 0.0287 0.0575 0.0862 0.1149  
 $\mu\text{g}/\text{m}^3$

14.3.0-rc.0 (Dev)  
c24



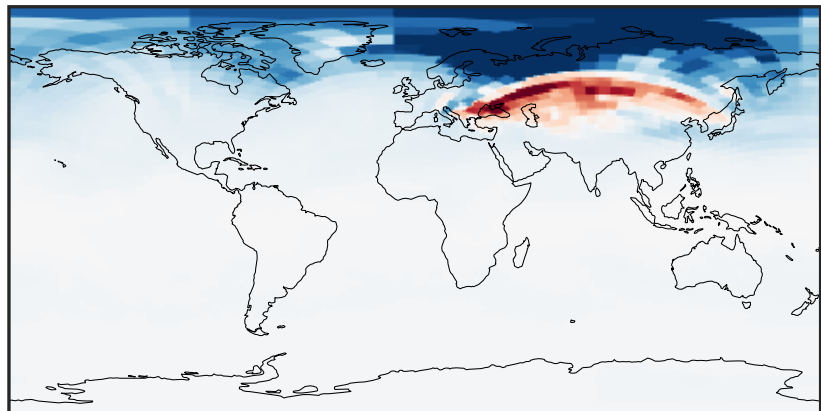
0.0000 0.0287 0.0575 0.0862 0.1149  
 $\mu\text{g}/\text{m}^3$

Difference (1x1.25)  
Dev - Ref, Dynamic Range



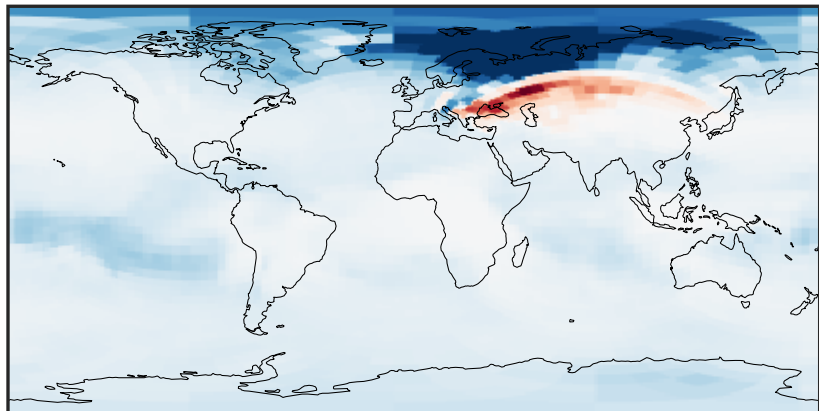
-3 0 3  
 $\mu\text{g}/\text{m}^3$   $1\text{e}-5$

Difference (1x1.25)  
Dev - Ref, Restricted Range [5%,95%]



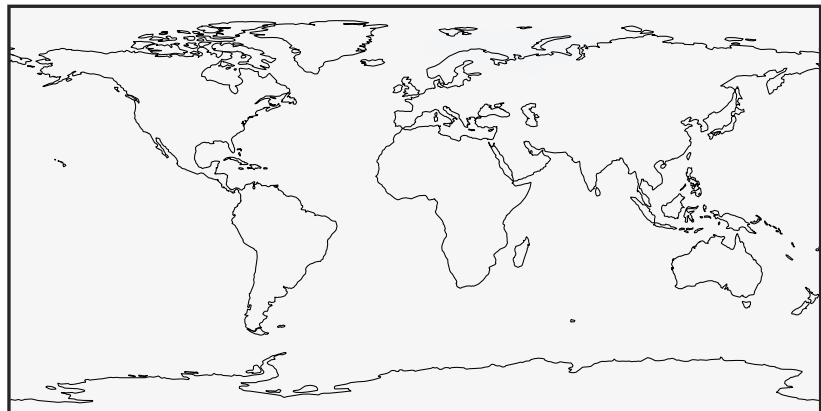
-1 0 1  
 $\mu\text{g}/\text{m}^3$   $1\text{e}-5$

Ratio (1x1.25)  
Dev/Ref, Dynamic Range



0.995883 0.997941 1.000000 1.002067 1.004134  
unitless

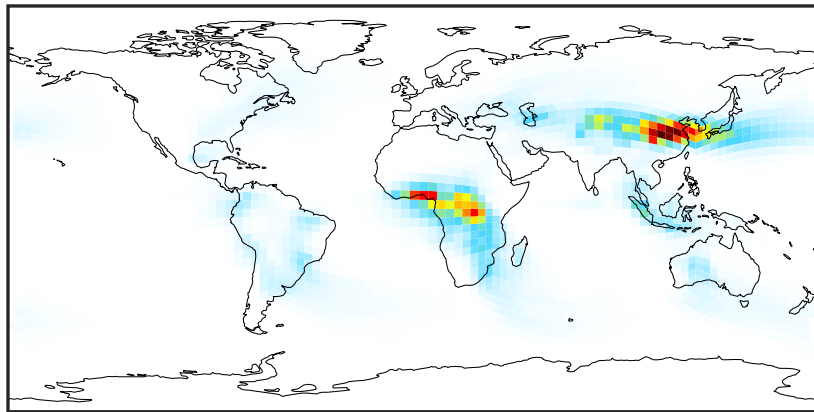
Ratio (1x1.25)  
Dev/Ref, Fixed Range



0.50 0.75 1.00 1.50 2.00  
unitless

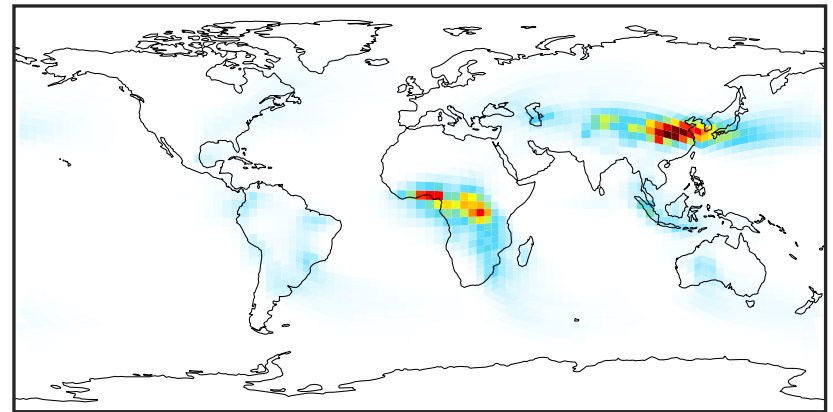
# SpeciesConcVV\_BCPO (Jan2019)

14.2.0-rc.2 (Ref)  
c24



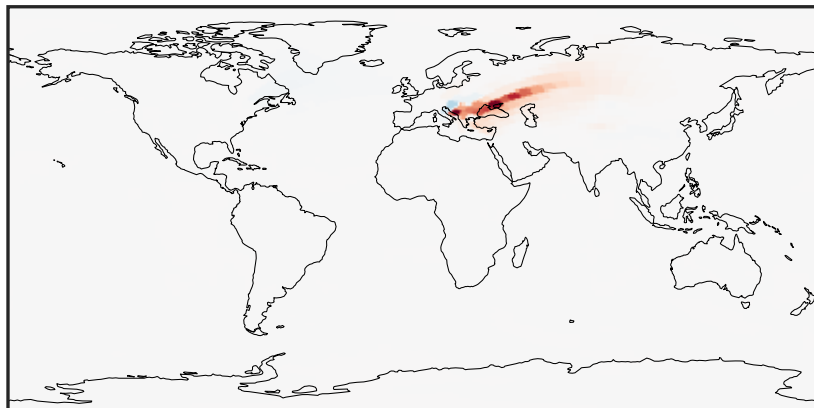
0.0015 0.0030 0.0045  
 $\mu\text{g}/\text{m}^3$

14.3.0-rc.0 (Dev)  
c24



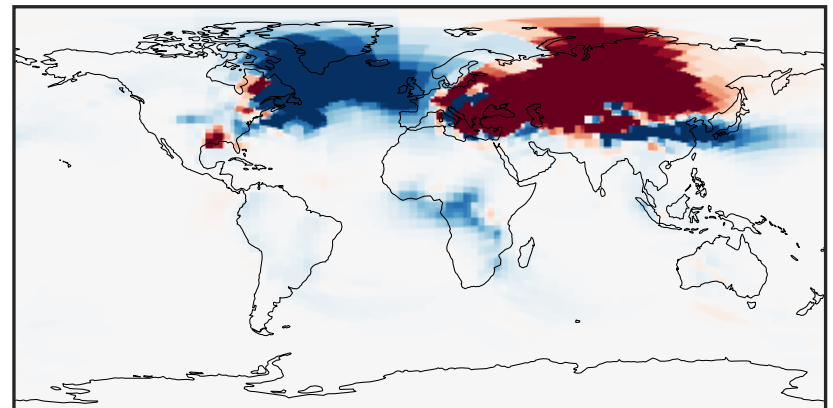
0.0015 0.0030 0.0045  
 $\mu\text{g}/\text{m}^3$

Difference (1x1.25)  
Dev - Ref, Dynamic Range



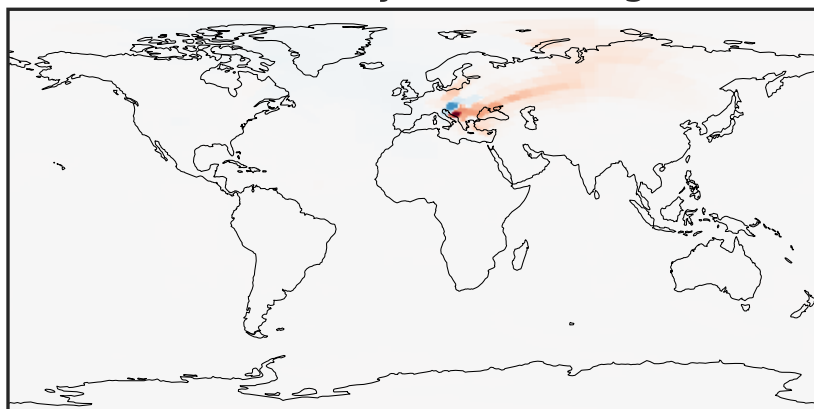
-2 0 2  
 $\mu\text{g}/\text{m}^3$   $1\text{e}-6$

Difference (1x1.25)  
Dev - Ref, Restricted Range [5%,95%]



-8 0 8  
 $\mu\text{g}/\text{m}^3$   $1\text{e}-9$

Ratio (1x1.25)  
Dev/Ref, Dynamic Range



0.97088 0.98544 1.00000 1.01500 1.03000  
unitless

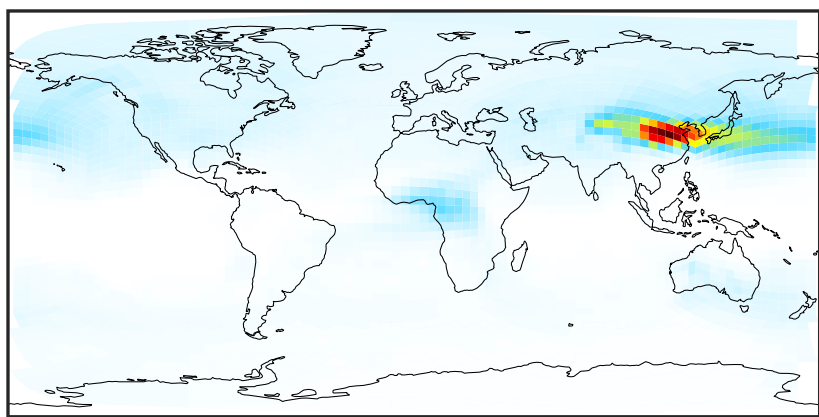
Ratio (1x1.25)  
Dev/Ref, Fixed Range



0.50 0.75 1.00 1.50 2.00  
unitless

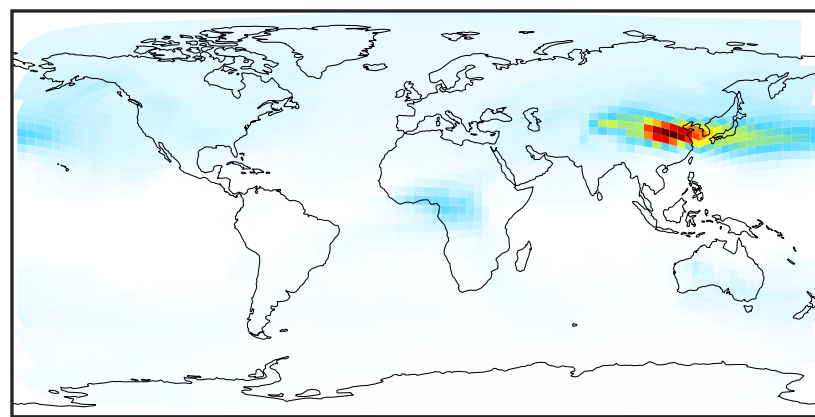
# SpeciesConcVW\_OCPI (Jan2019)

14.2.0-rc.2 (Ref)  
c24



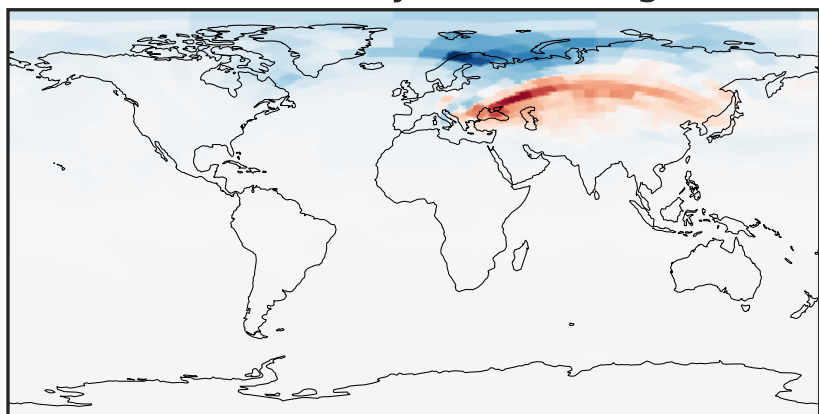
0.0000 0.0807 0.1613 0.2420 0.3226  
µg/m3

14.3.0-rc.0 (Dev)  
c24



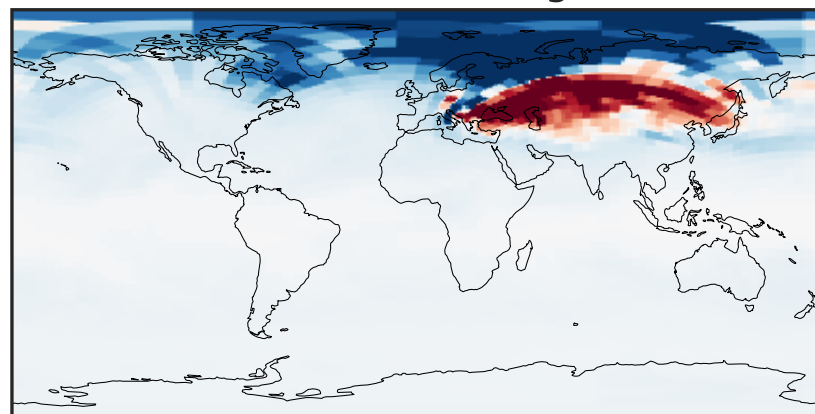
0.0000 0.0807 0.1613 0.2420 0.3226  
µg/m3

Difference (1x1.25)  
Dev - Ref, Dynamic Range



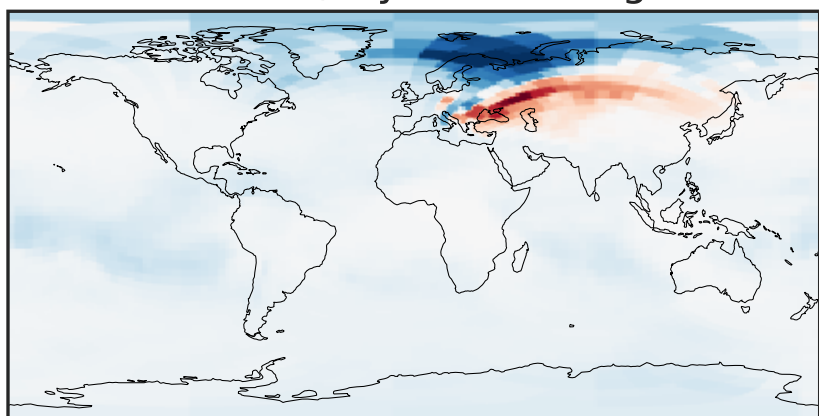
-5 0 5  
µg/m3 1e-5

Difference (1x1.25)  
Dev - Ref, Restricted Range [5%,95%]



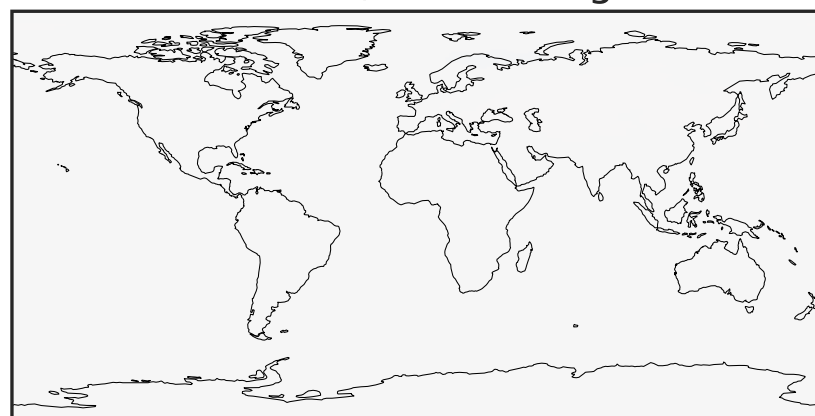
-1.5 0.0 1.5  
µg/m3 1e-5

Ratio (1x1.25)  
Dev/Ref, Dynamic Range



0.99471 0.99735 1.00000 1.00266 1.00532  
unitless

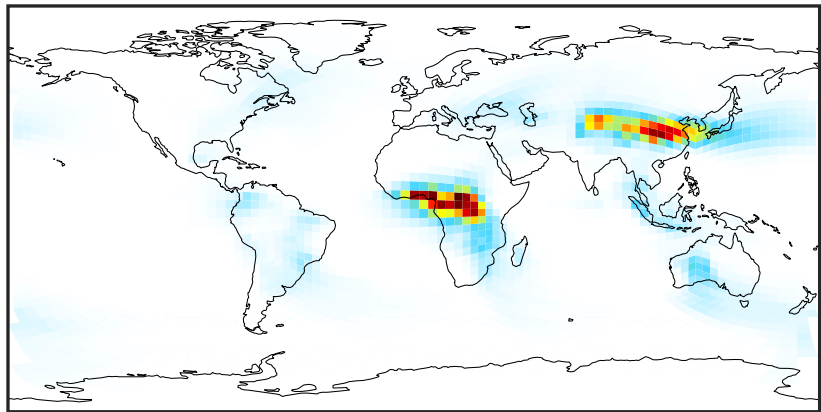
Ratio (1x1.25)  
Dev/Ref, Fixed Range



0.50 0.75 1.00 1.50 2.00  
unitless

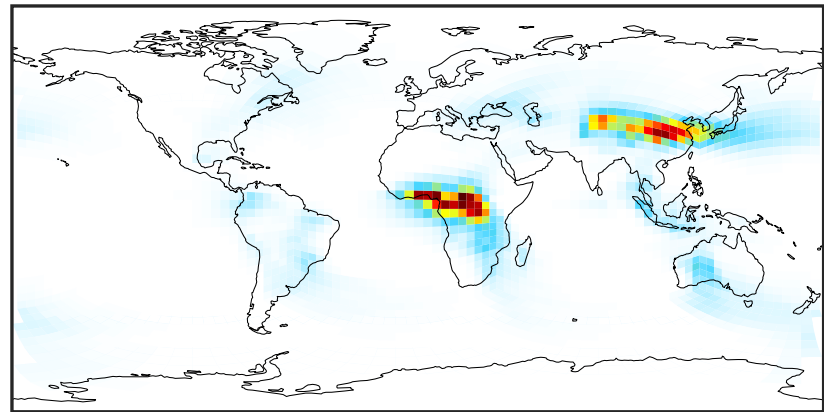
# SpeciesConcVV\_OCPO (Jan2019)

14.2.0-rc.2 (Ref)  
c24



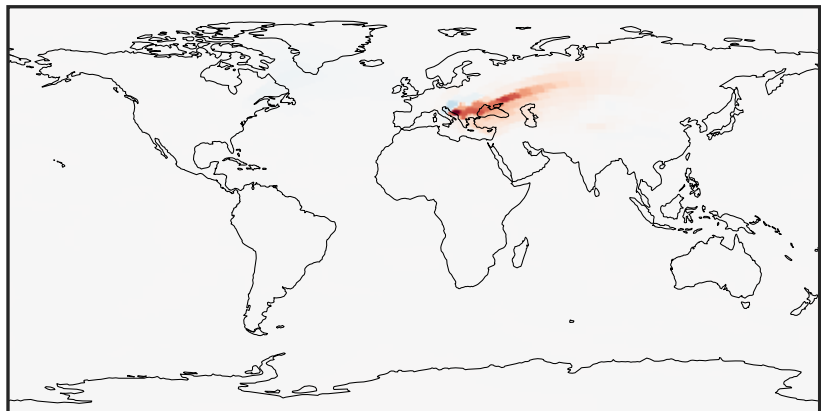
0.004 0.008 0.012  
 $\mu\text{g}/\text{m}^3$

14.3.0-rc.0 (Dev)  
c24



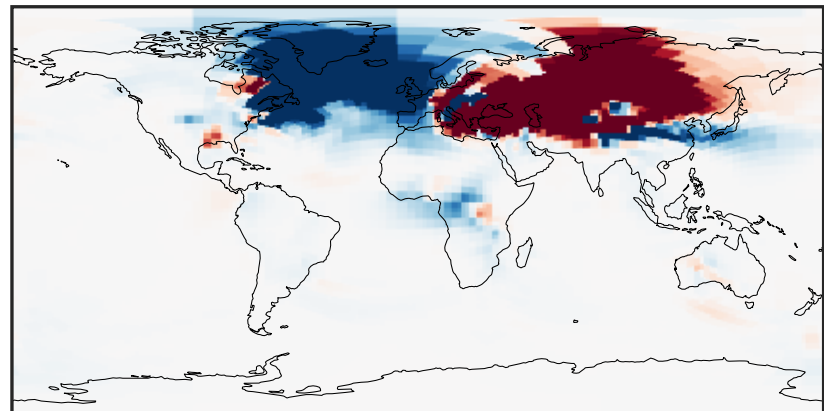
0.004 0.008 0.012  
 $\mu\text{g}/\text{m}^3$

Difference (1x1.25)  
Dev - Ref, Dynamic Range



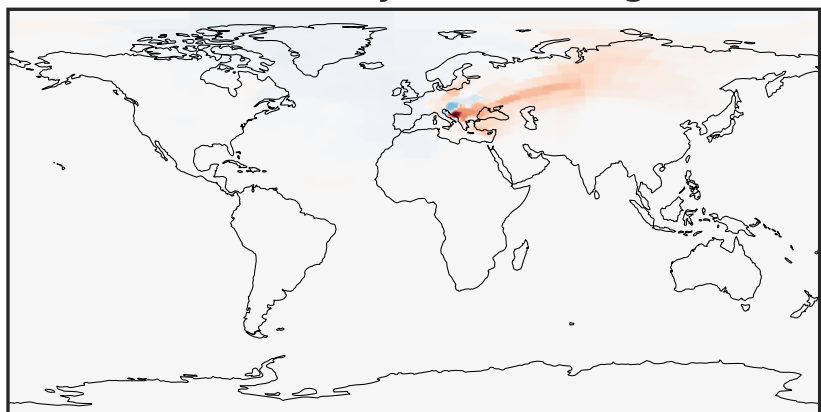
-8 0 8  
 $\mu\text{g}/\text{m}^3$   $1\text{e}-6$

Difference (1x1.25)  
Dev - Ref, Restricted Range [5%,95%]



-3 0 3  
 $\mu\text{g}/\text{m}^3$   $1\text{e}-8$

Ratio (1x1.25)  
Dev/Ref, Dynamic Range



0.97564 0.98782 1.00000 1.01248 1.02497  
unitless

Ratio (1x1.25)  
Dev/Ref, Fixed Range

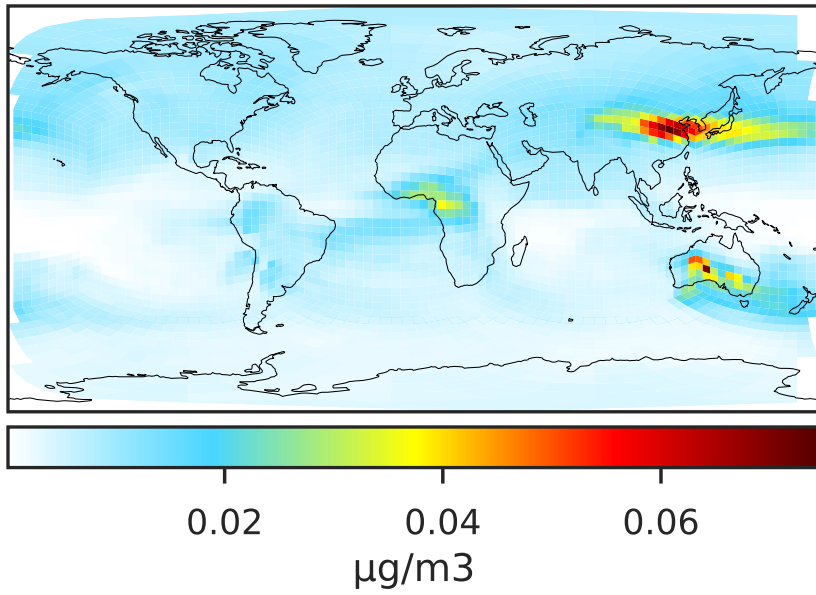


0.50 0.75 1.00 1.50 2.00  
unitless

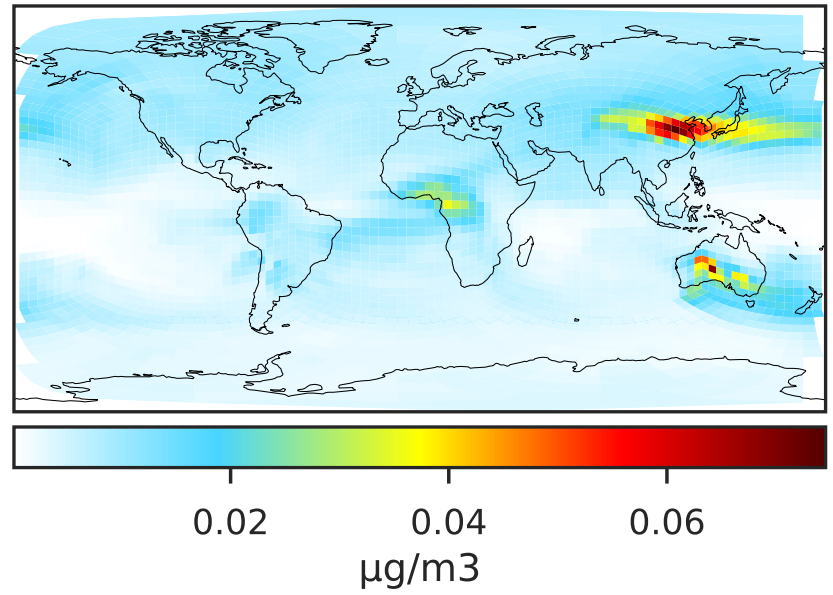


# SpeciesConcVV\_Complex\_SOA (Jan2019)

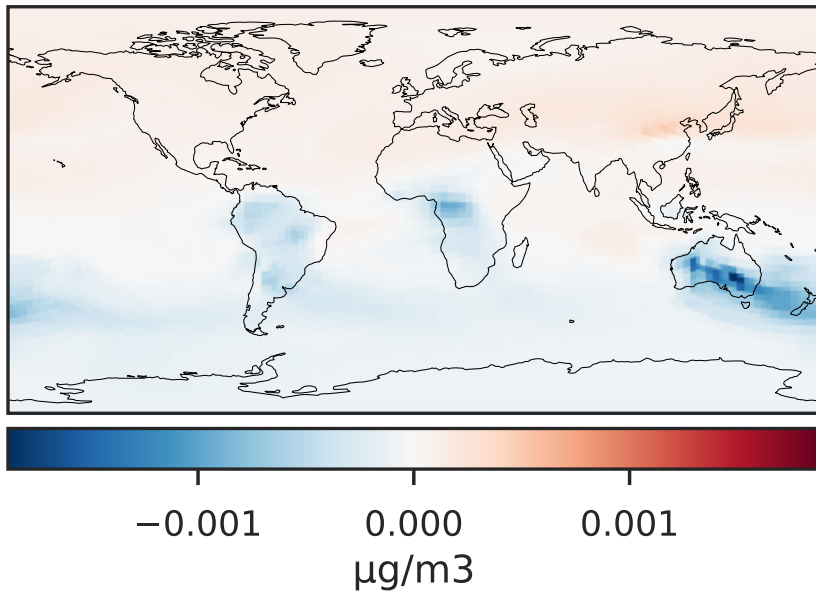
14.2.0-rc.2 (Ref)  
c24



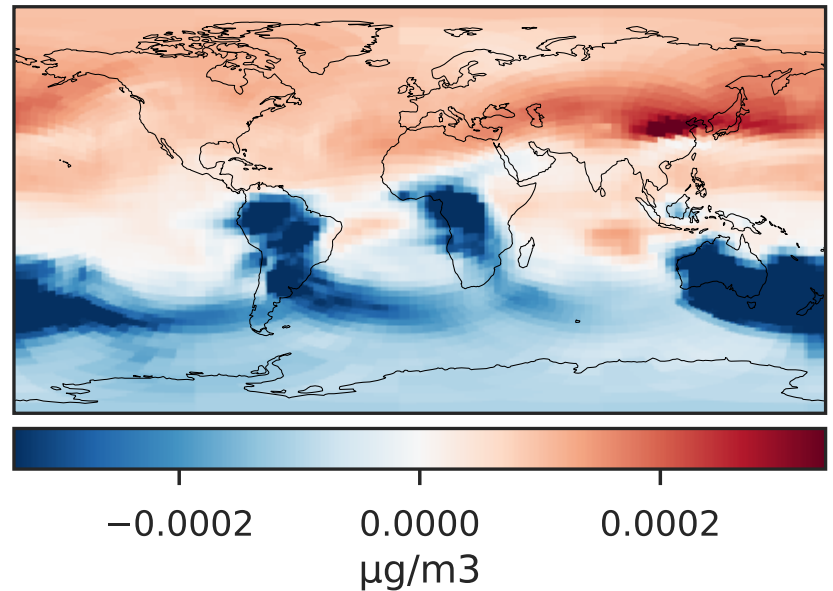
14.3.0-rc.0 (Dev)  
c24



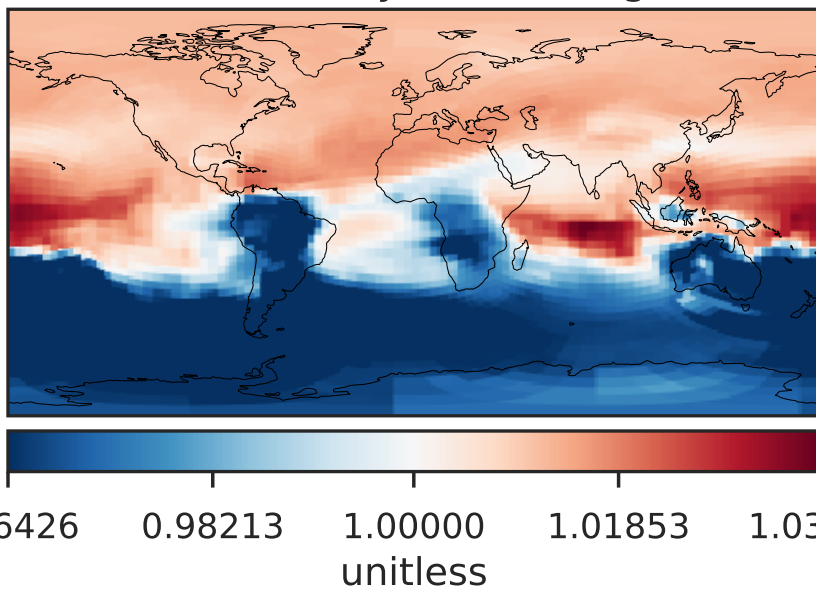
Difference (1x1.25)  
Dev - Ref, Dynamic Range



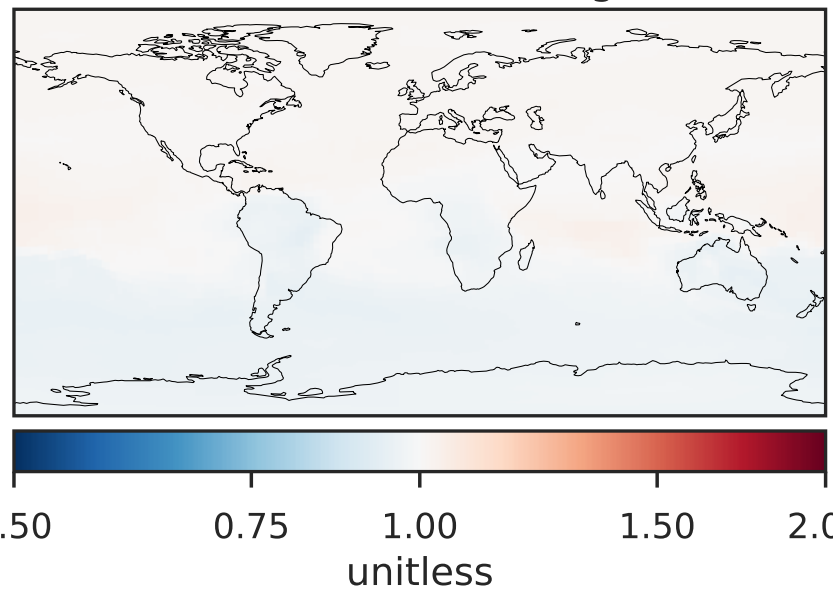
Difference (1x1.25)  
Dev - Ref, Restricted Range [5%,95%]



Ratio (1x1.25)  
Dev/Ref, Dynamic Range

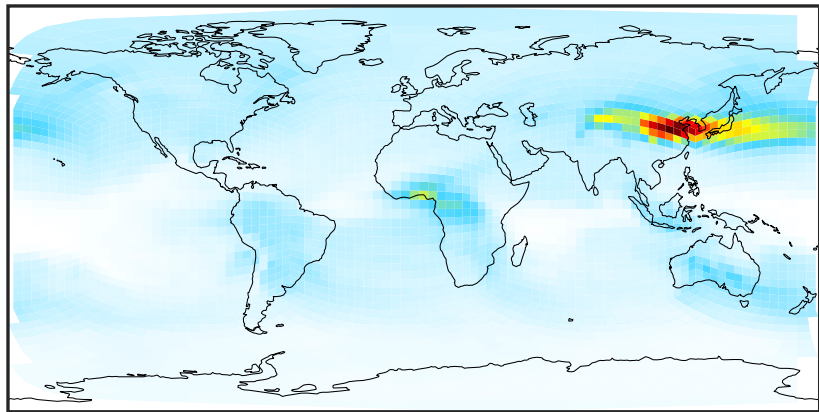


Ratio (1x1.25)  
Dev/Ref, Fixed Range



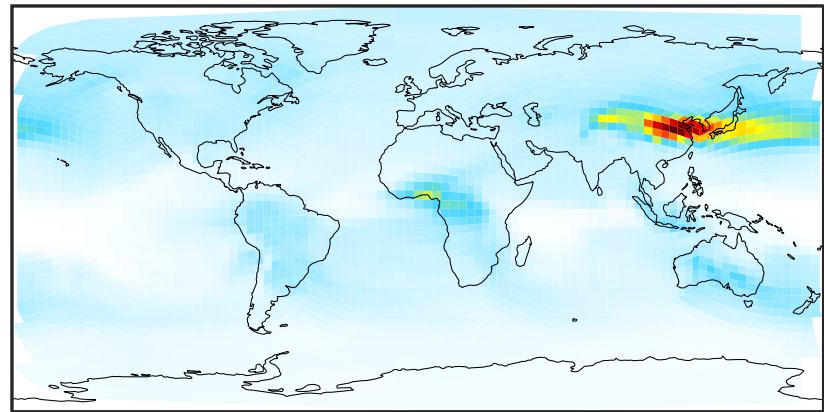
# SpeciesConcVV\_Simple\_SOA (Jan2019)

14.2.0-rc.2 (Ref)  
c24



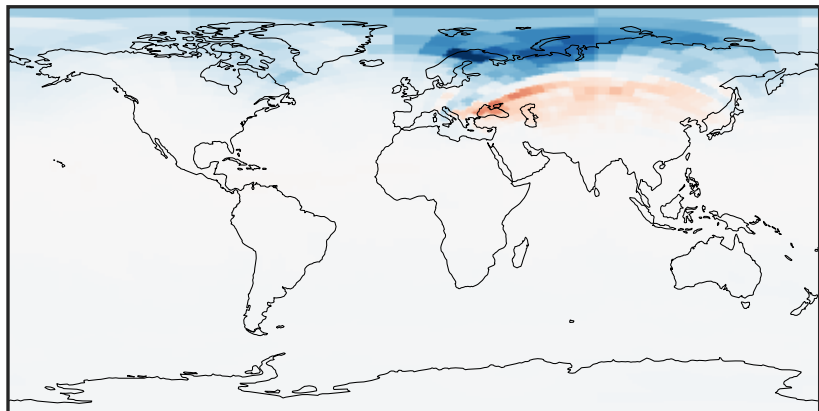
0.0011 0.2015 0.4019 0.6023 0.8026  
 $\mu\text{g}/\text{m}^3$

14.3.0-rc.0 (Dev)  
c24



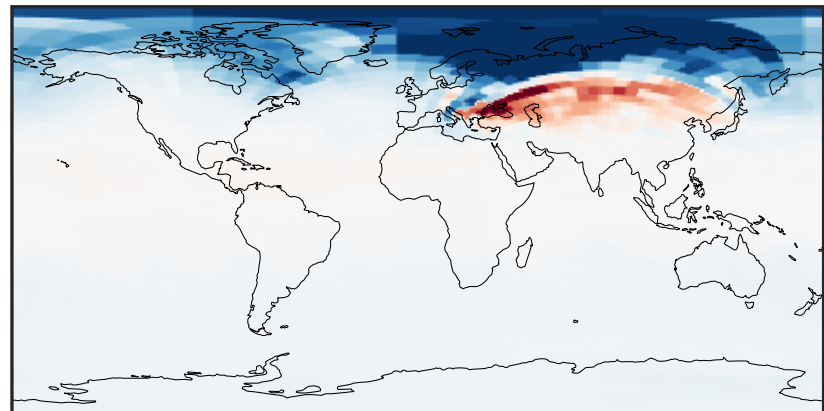
0.0011 0.2015 0.4019 0.6023 0.8026  
 $\mu\text{g}/\text{m}^3$

Difference (1x1.25)  
Dev - Ref, Dynamic Range



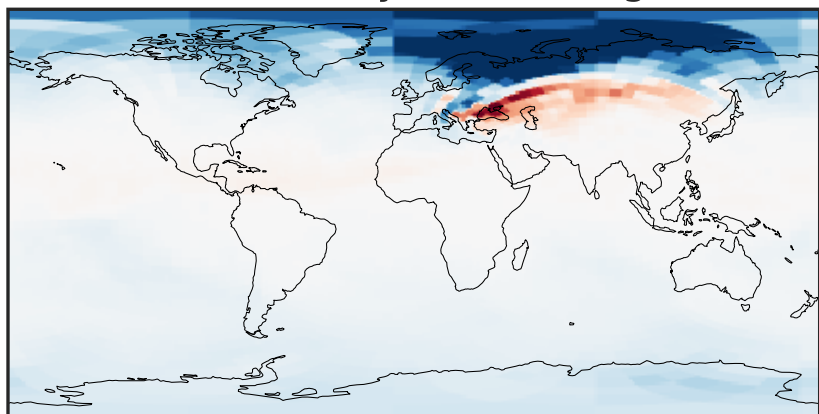
-0.00015 0.00000 0.00015  
 $\mu\text{g}/\text{m}^3$

Difference (1x1.25)  
Dev - Ref, Restricted Range [5%,95%]



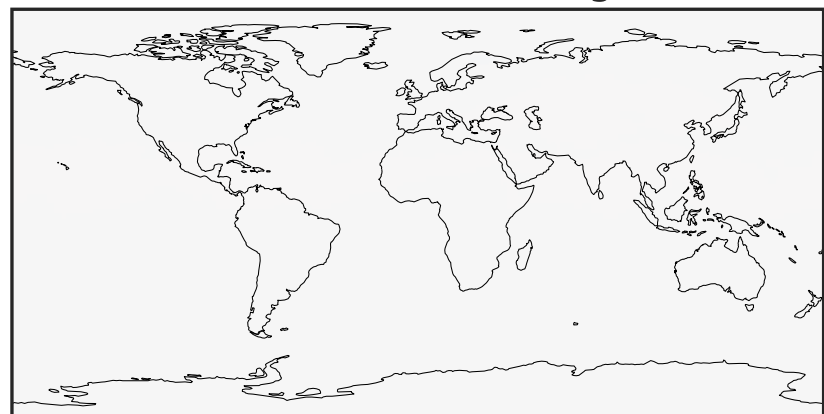
-6 0 6  
 $\mu\text{g}/\text{m}^3$   $1\text{e}-5$

Ratio (1x1.25)  
Dev/Ref, Dynamic Range



0.997965 0.998983 1.000000 1.001019 1.002039  
unitless

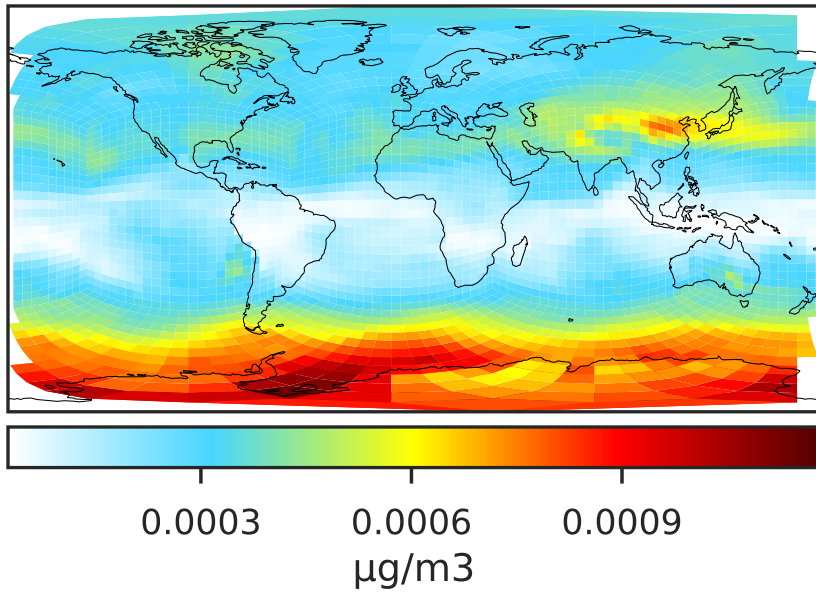
Ratio (1x1.25)  
Dev/Ref, Fixed Range



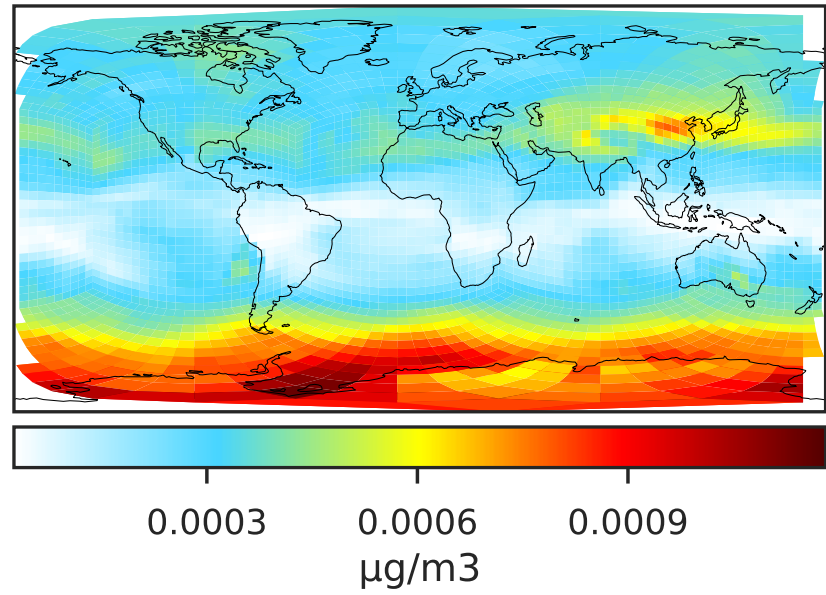
0.50 0.75 1.00 1.50 2.00  
unitless

# SpeciesConcVV\_AERI (Jan2019)

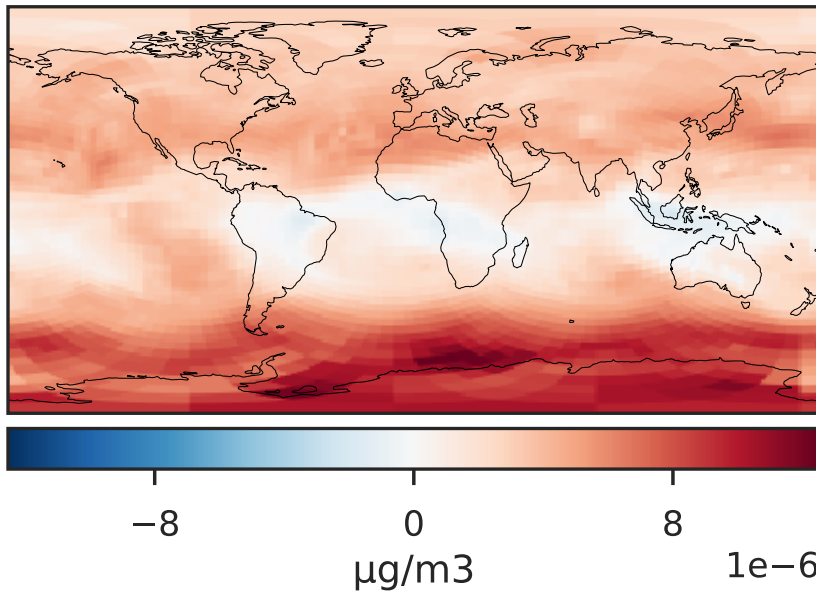
14.2.0-rc.2 (Ref)  
c24



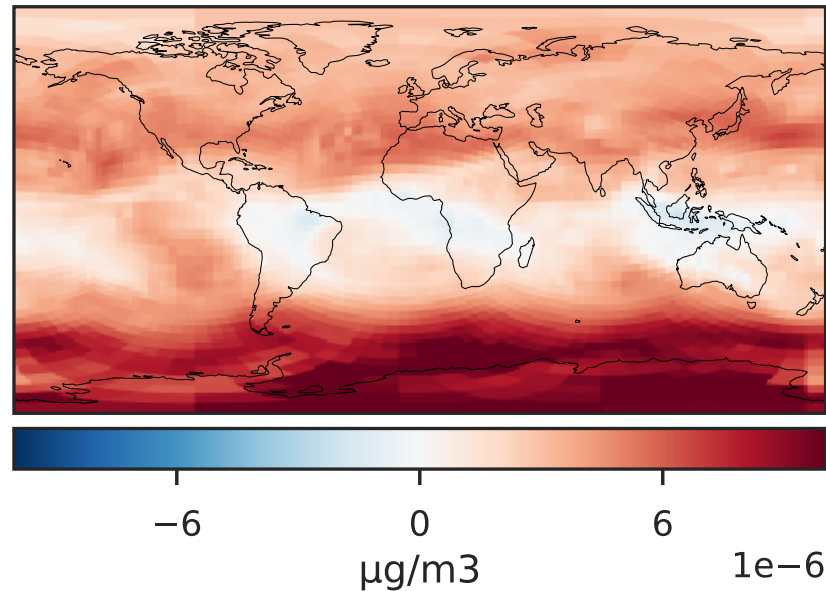
14.3.0-rc.0 (Dev)  
c24



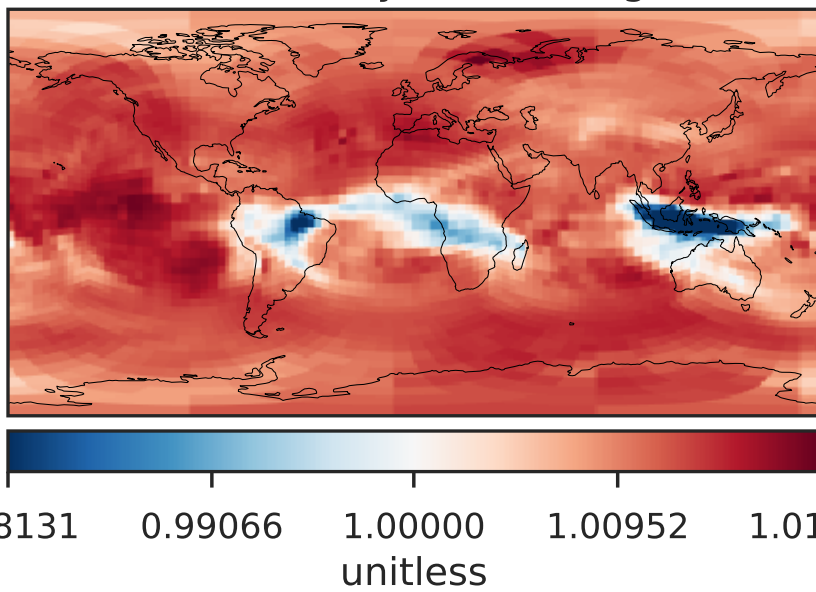
Difference (1x1.25)  
Dev - Ref, Dynamic Range



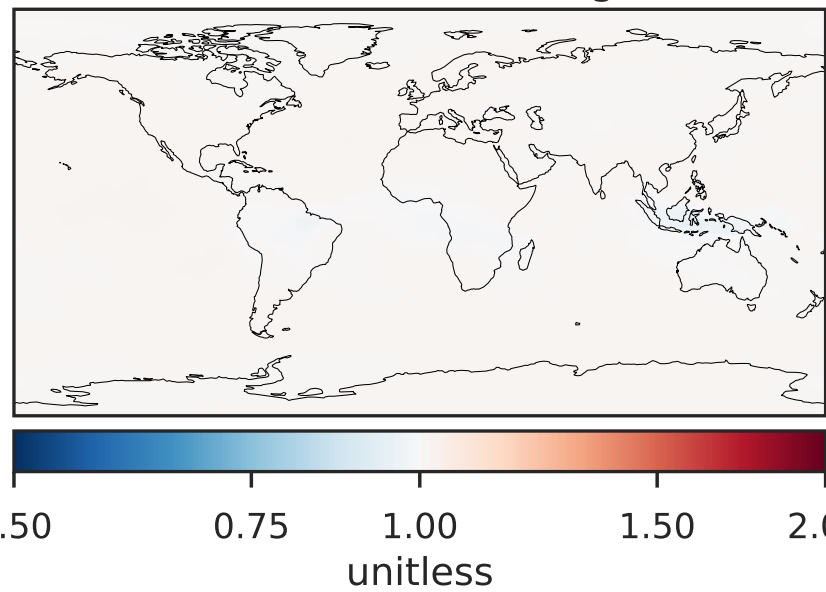
Difference (1x1.25)  
Dev - Ref, Restricted Range [5%,95%]



Ratio (1x1.25)  
Dev/Ref, Dynamic Range



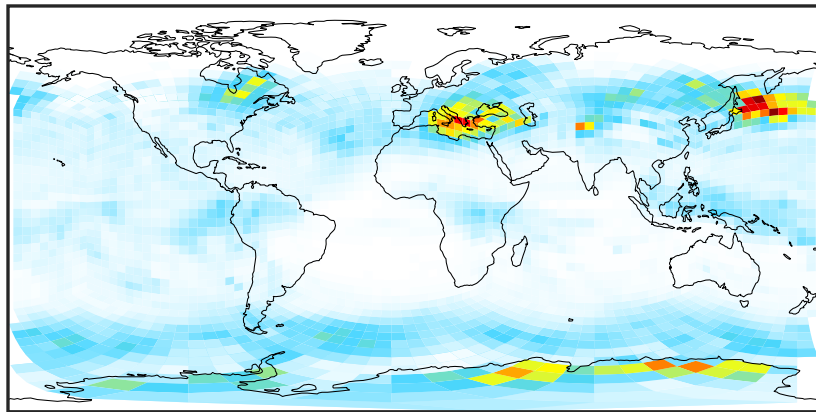
Ratio (1x1.25)  
Dev/Ref, Fixed Range





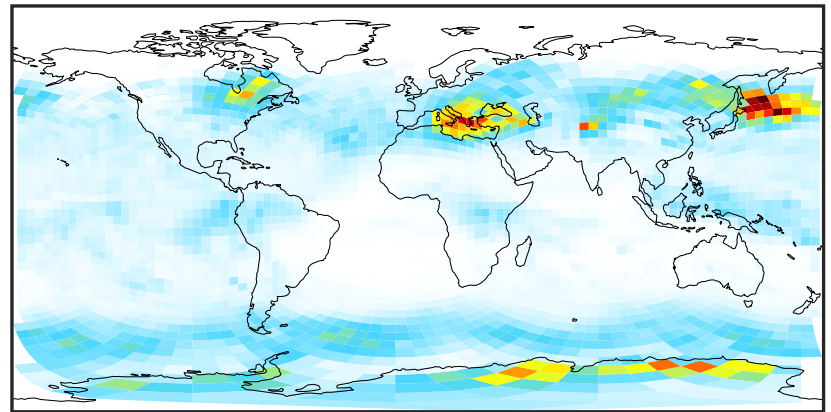
# SpeciesConcVV\_BrSALA (Jan2019)

14.2.0-rc.2 (Ref)  
c24



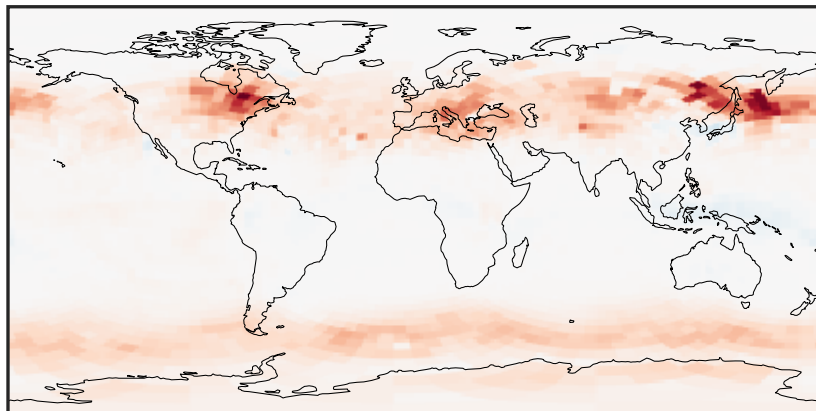
0.00004 0.00008 0.00012  
μg/m3

14.3.0-rc.0 (Dev)  
c24



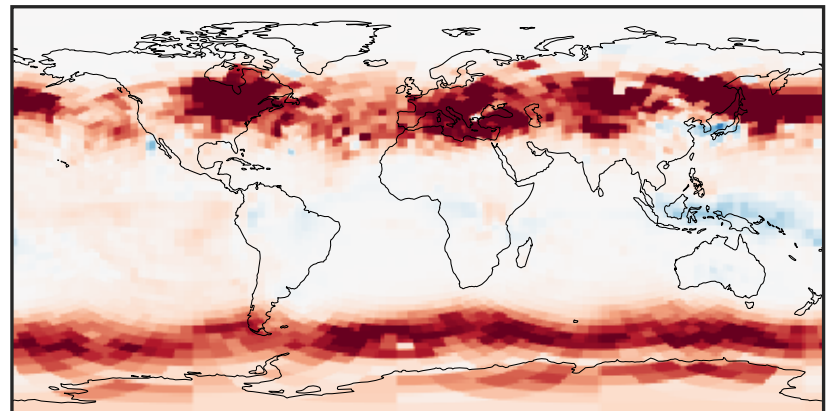
0.00004 0.00008 0.00012  
μg/m3

Difference (1x1.25)  
Dev - Ref, Dynamic Range



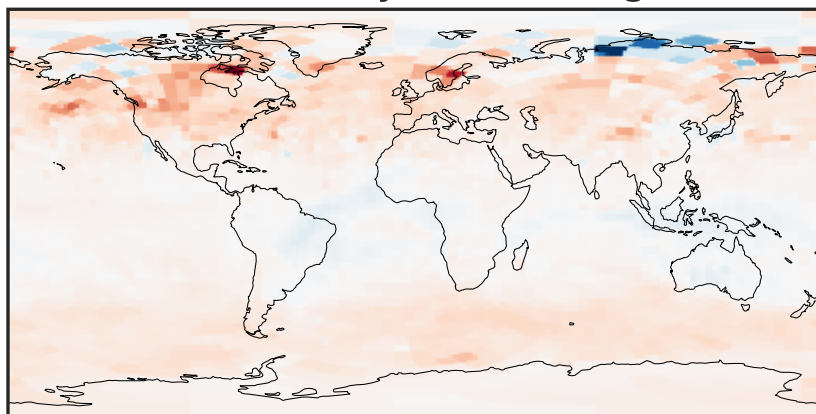
-8 0 8  
μg/m3 1e-6

Difference (1x1.25)  
Dev - Ref, Restricted Range [5%,95%]



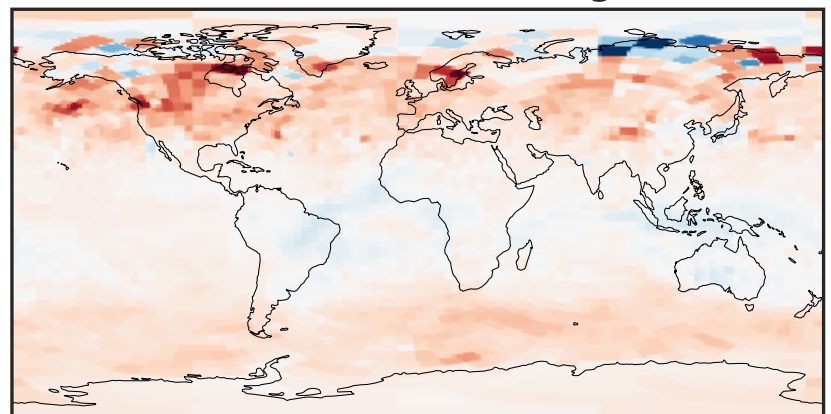
-2 0 2  
μg/m3 1e-6

Ratio (1x1.25)  
Dev/Ref, Dynamic Range



0.355 0.678 1.000 1.907 2.815  
unitless

Ratio (1x1.25)  
Dev/Ref, Fixed Range

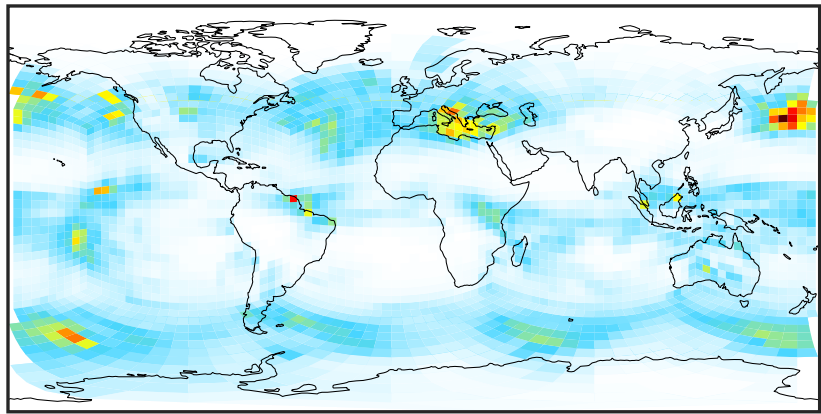


0.50 0.75 1.00 1.50 2.00  
unitless



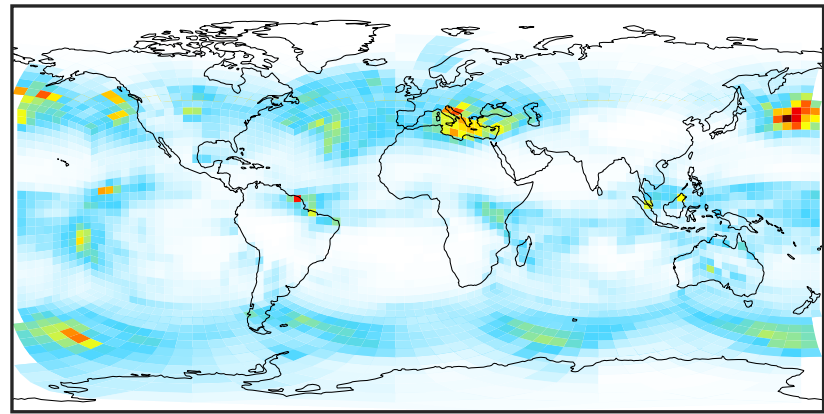
# SpeciesConcVV\_BrSALC (Jan2019)

14.2.0-rc.2 (Ref)  
c24



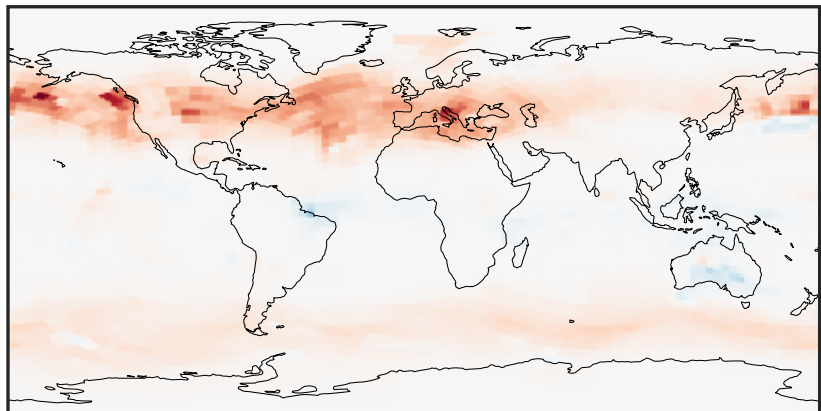
0.4 0.8 1.2  
 $\mu\text{g}/\text{m}^3$   $1\text{e}-5$

14.3.0-rc.0 (Dev)  
c24



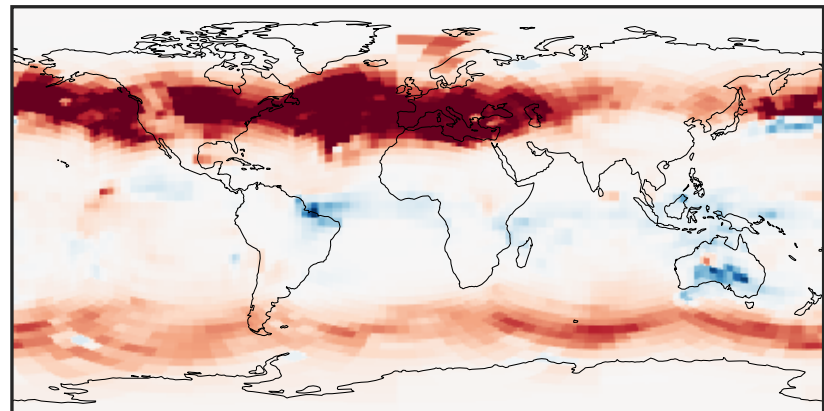
0.4 0.8 1.2  
 $\mu\text{g}/\text{m}^3$   $1\text{e}-5$

Difference (1x1.25)  
Dev - Ref, Dynamic Range



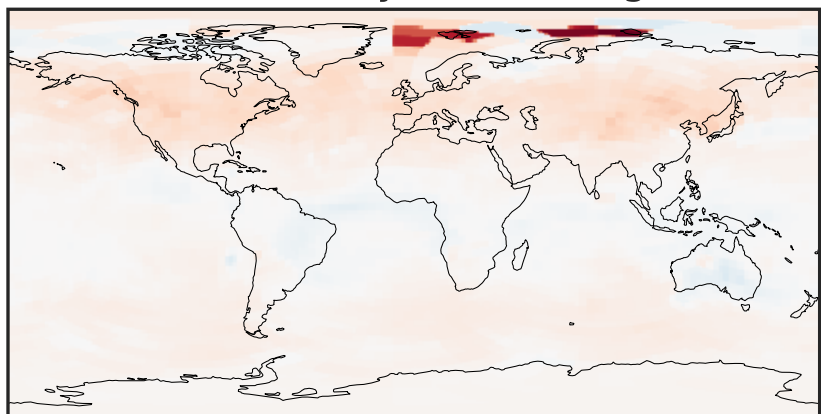
-5 0 5  
 $\mu\text{g}/\text{m}^3$   $1\text{e}-7$

Difference (1x1.25)  
Dev - Ref, Restricted Range [5%,95%]



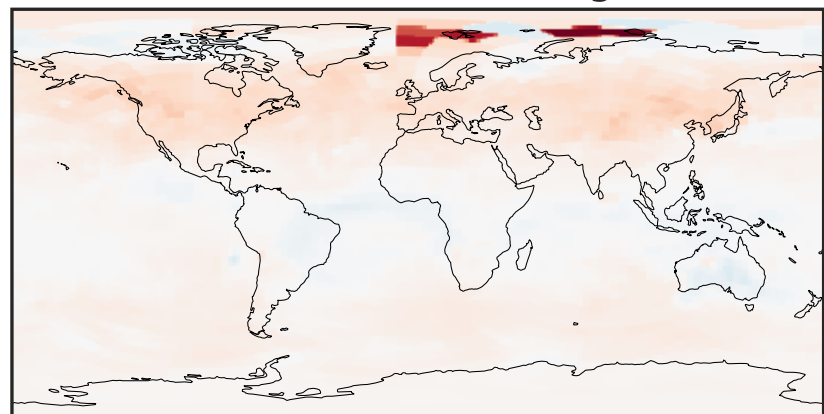
-1.5 0.0 1.5  
 $\mu\text{g}/\text{m}^3$   $1\text{e}-7$

Ratio (1x1.25)  
Dev/Ref, Dynamic Range



0.491 0.745 1.000 1.519 2.038  
unitless

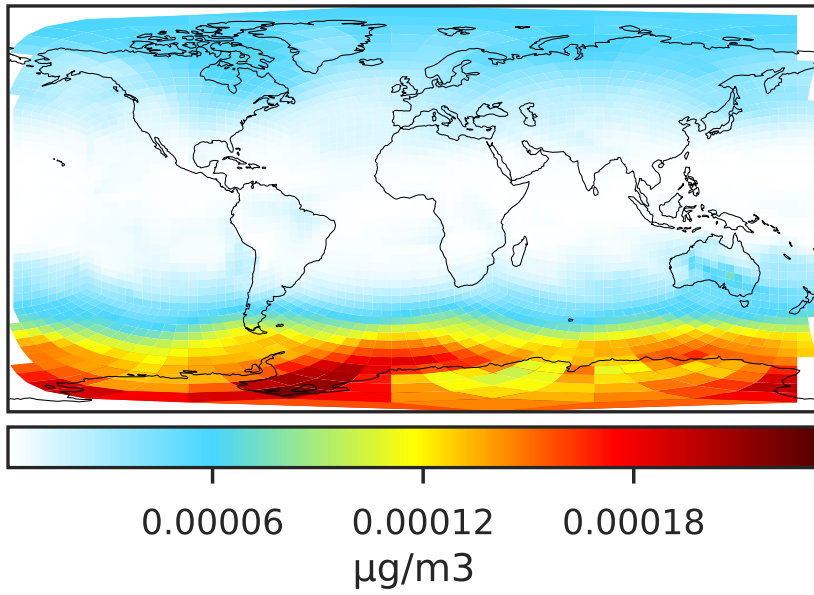
Ratio (1x1.25)  
Dev/Ref, Fixed Range



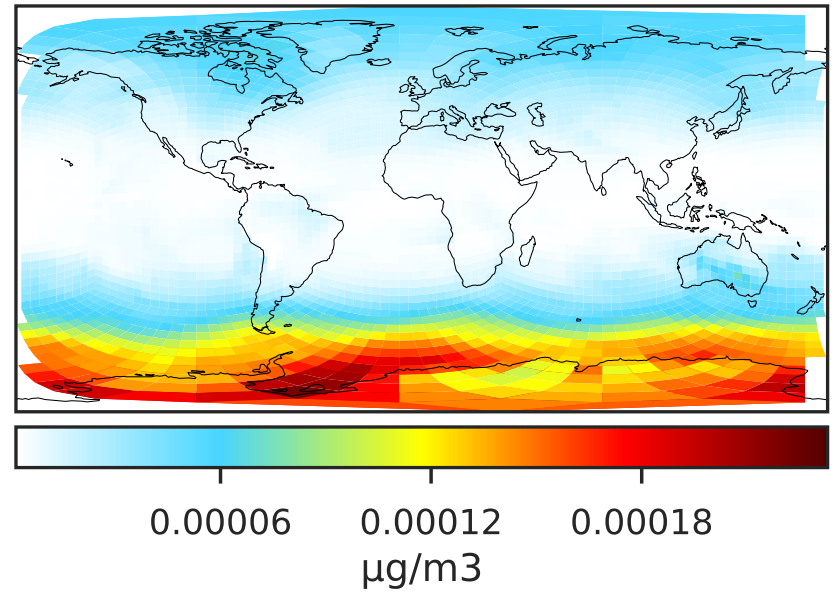
0.50 0.75 1.00 1.50 2.00  
unitless

# SpeciesConcVV\_ISALA (Jan2019)

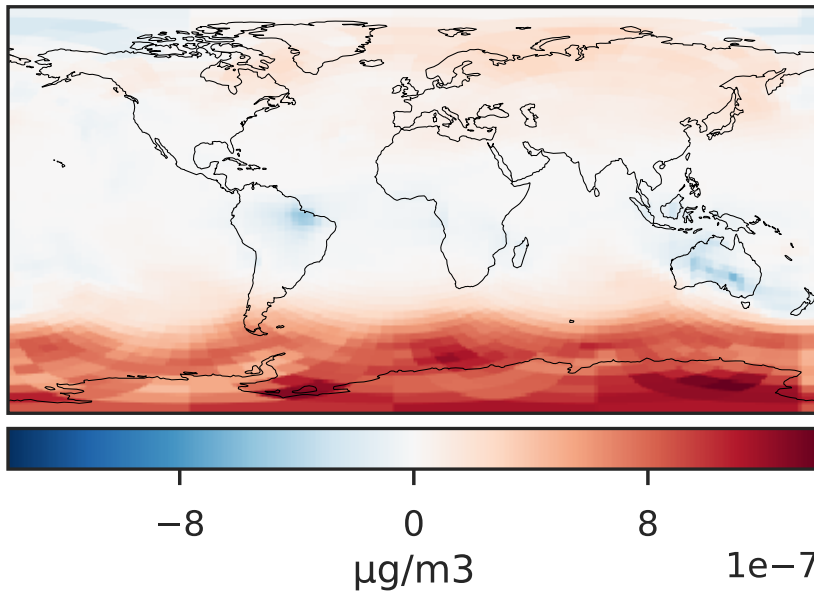
14.2.0-rc.2 (Ref)  
c24



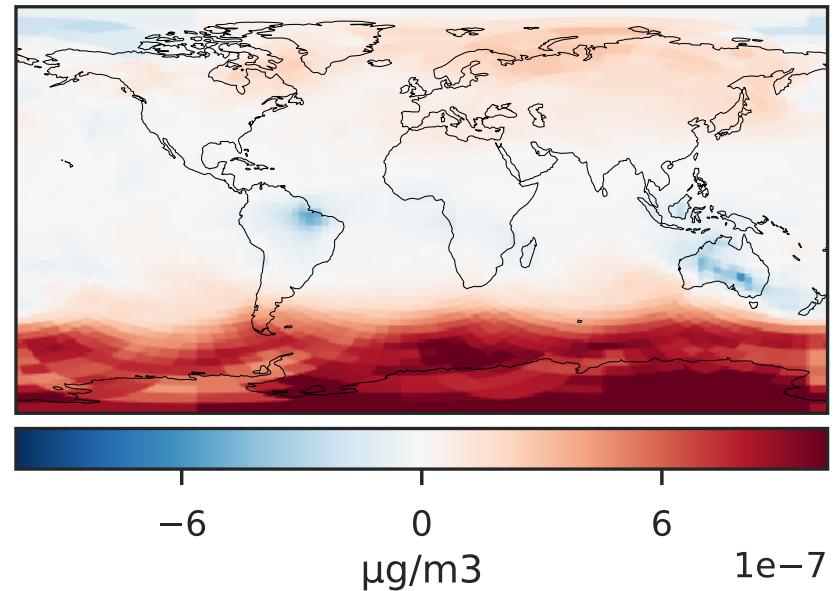
14.3.0-rc.0 (Dev)  
c24



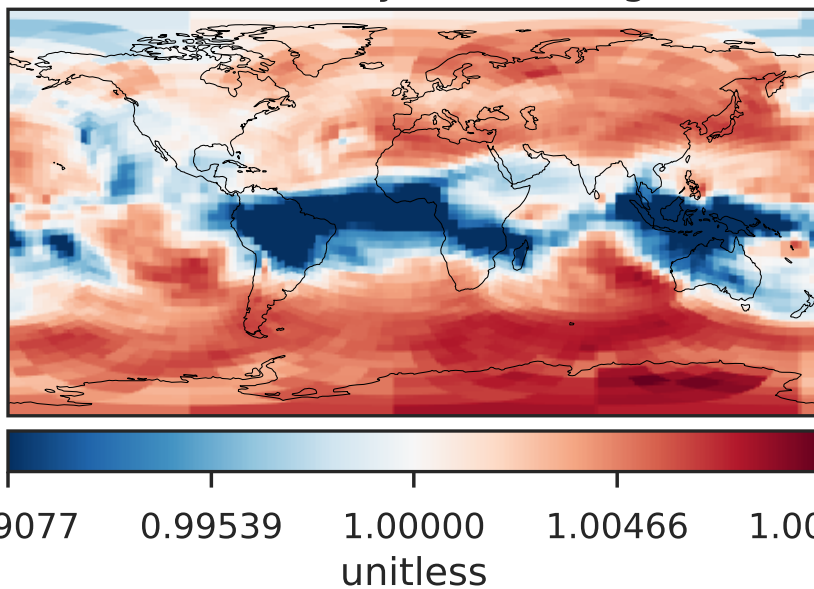
Difference (1x1.25)  
Dev - Ref, Dynamic Range



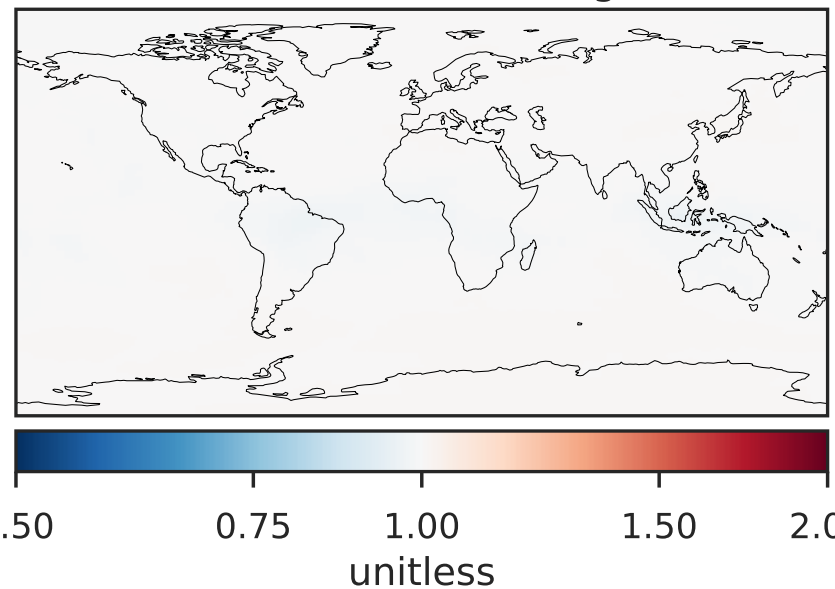
Difference (1x1.25)  
Dev - Ref, Restricted Range [5%,95%]



Ratio (1x1.25)  
Dev/Ref, Dynamic Range

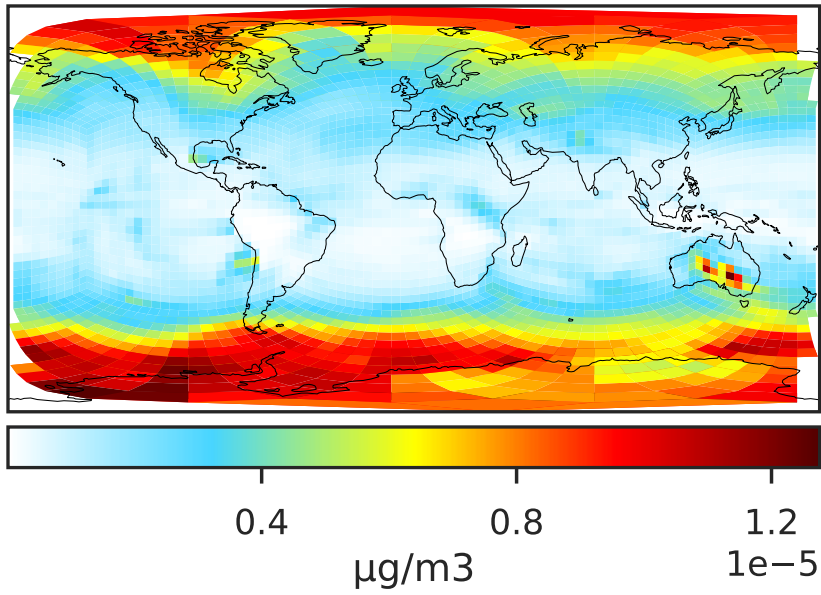


Ratio (1x1.25)  
Dev/Ref, Fixed Range

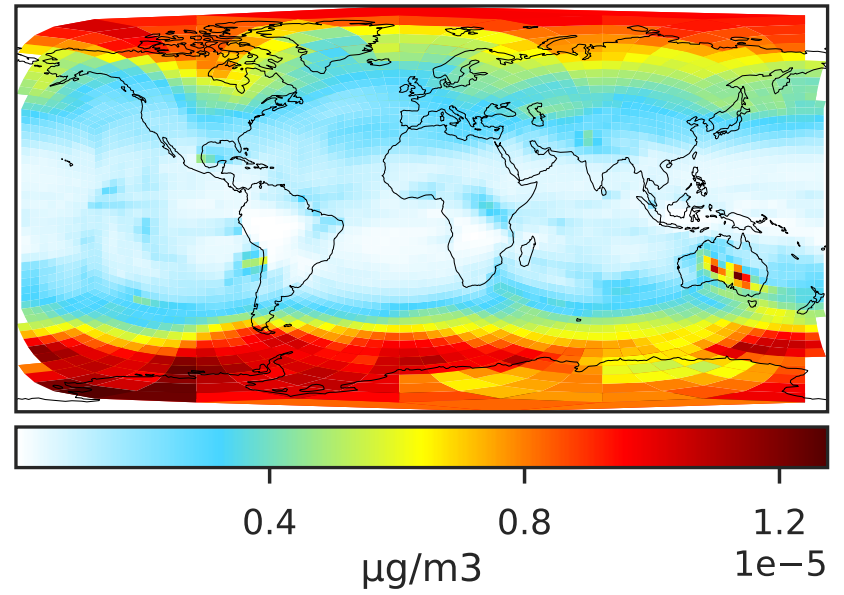


# SpeciesConcVV\_ISALC (Jan2019)

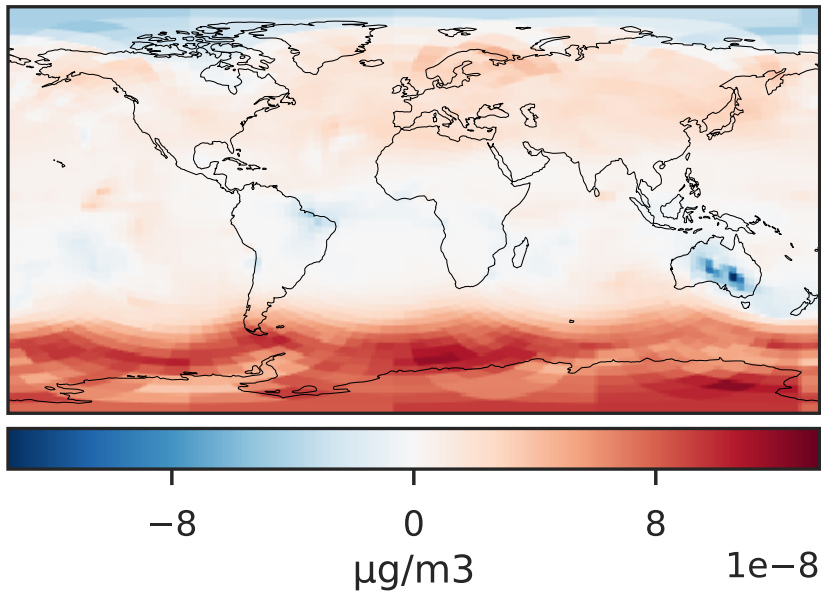
14.2.0-rc.2 (Ref)  
c24



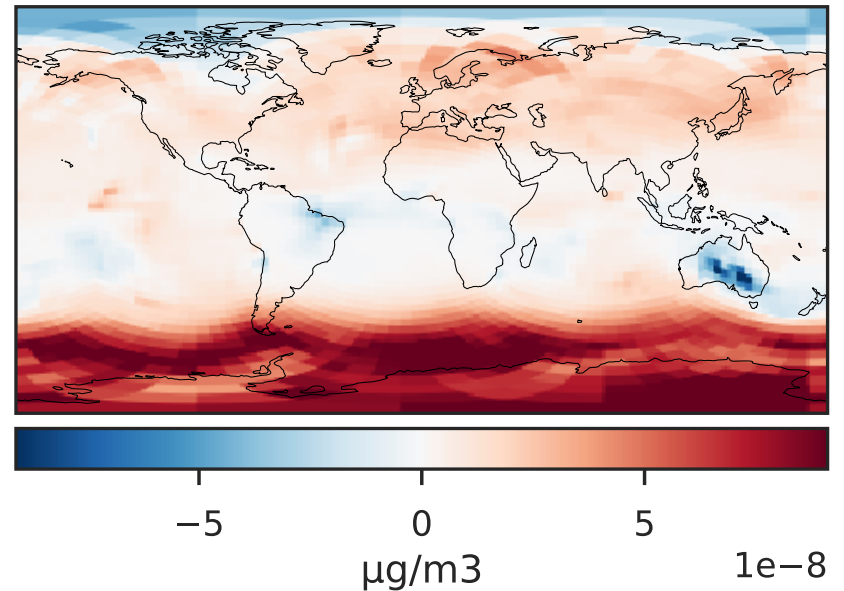
14.3.0-rc.0 (Dev)  
c24



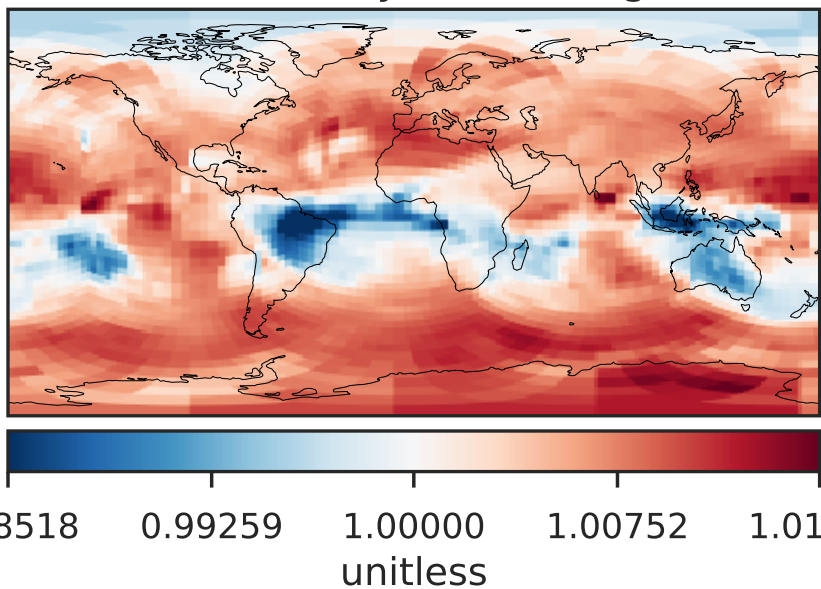
Difference (1x1.25)  
Dev - Ref, Dynamic Range



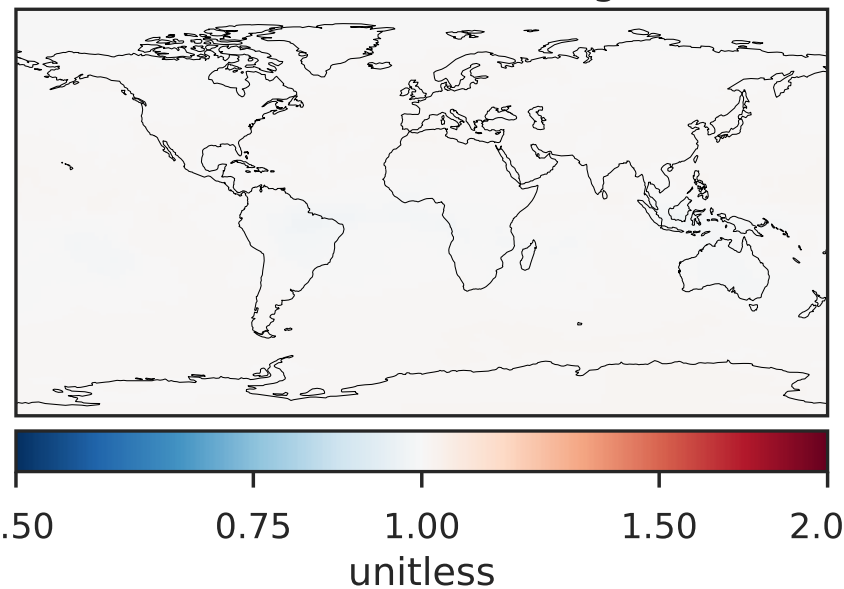
Difference (1x1.25)  
Dev - Ref, Restricted Range [5%,95%]



Ratio (1x1.25)  
Dev/Ref, Dynamic Range



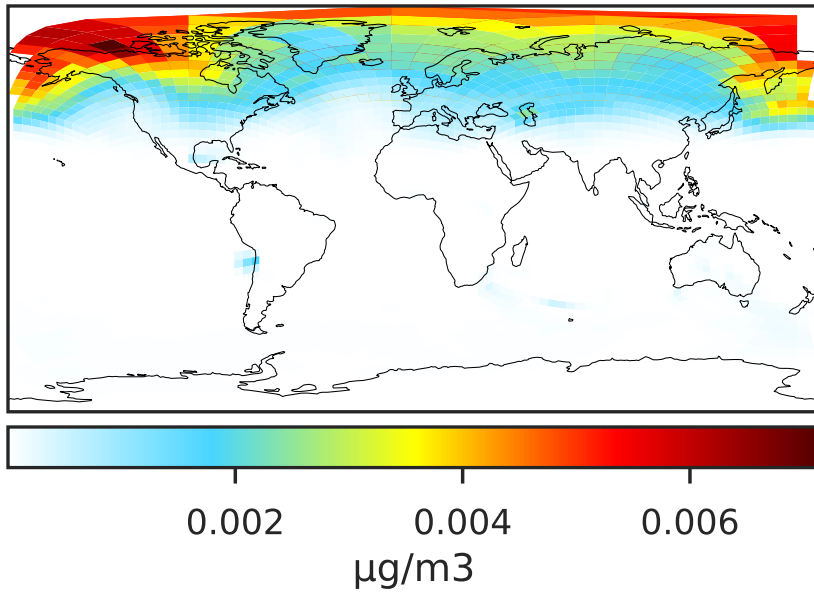
Ratio (1x1.25)  
Dev/Ref, Fixed Range



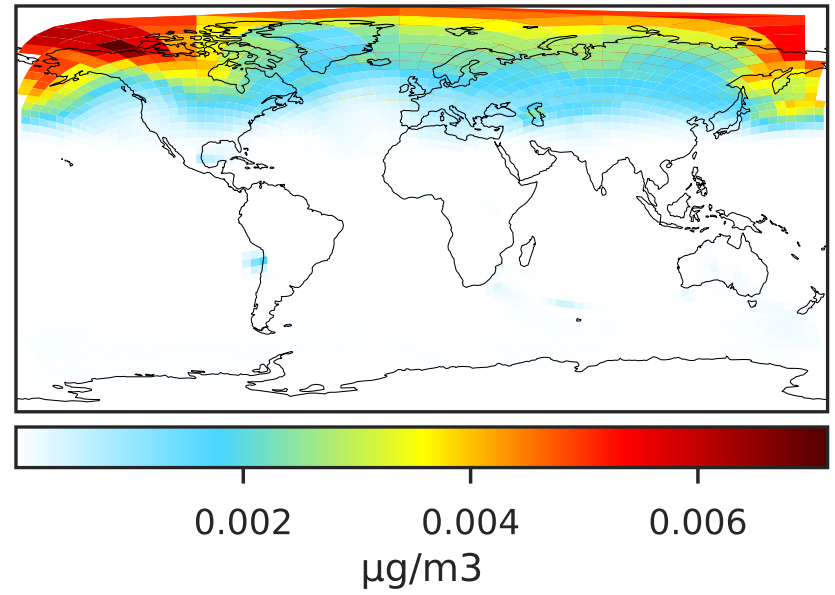


# SpeciesConcVV\_NITs (Jan2019)

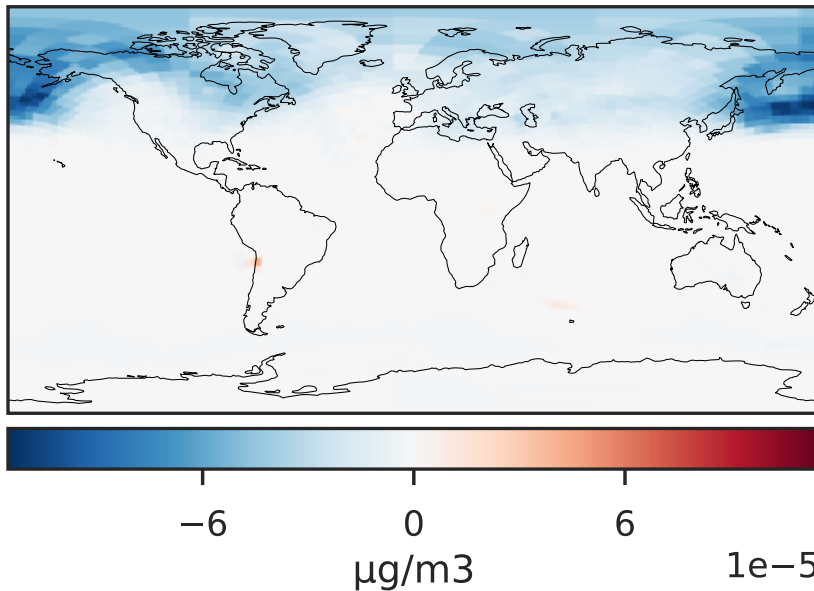
14.2.0-rc.2 (Ref)  
c24



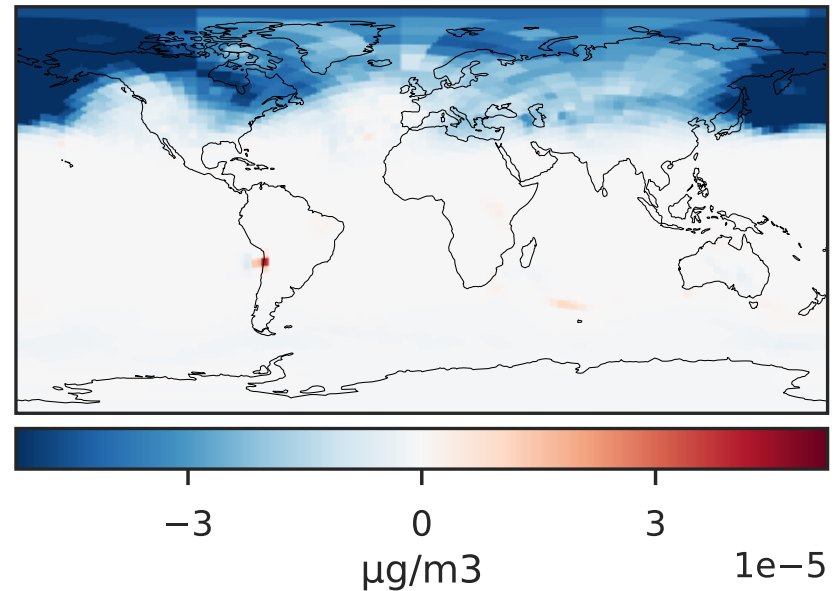
14.3.0-rc.0 (Dev)  
c24



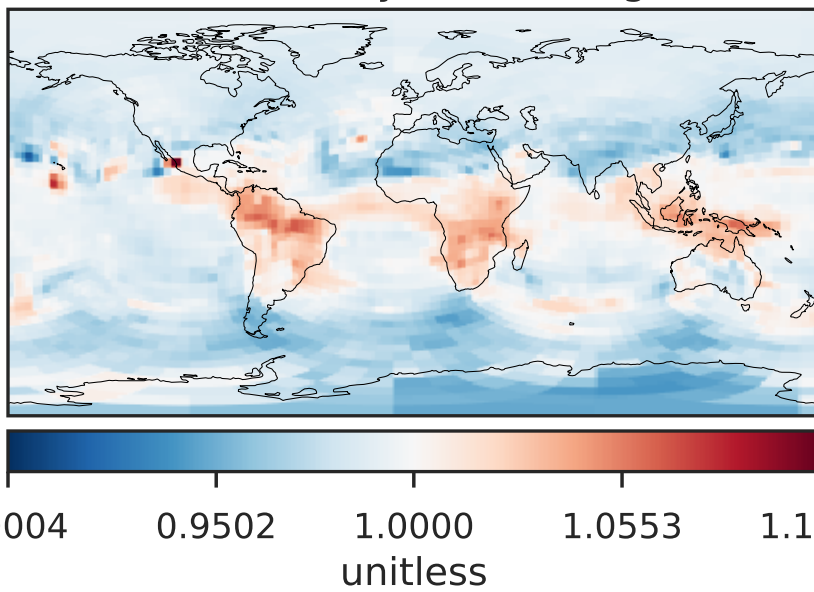
Difference (1x1.25)  
Dev - Ref, Dynamic Range



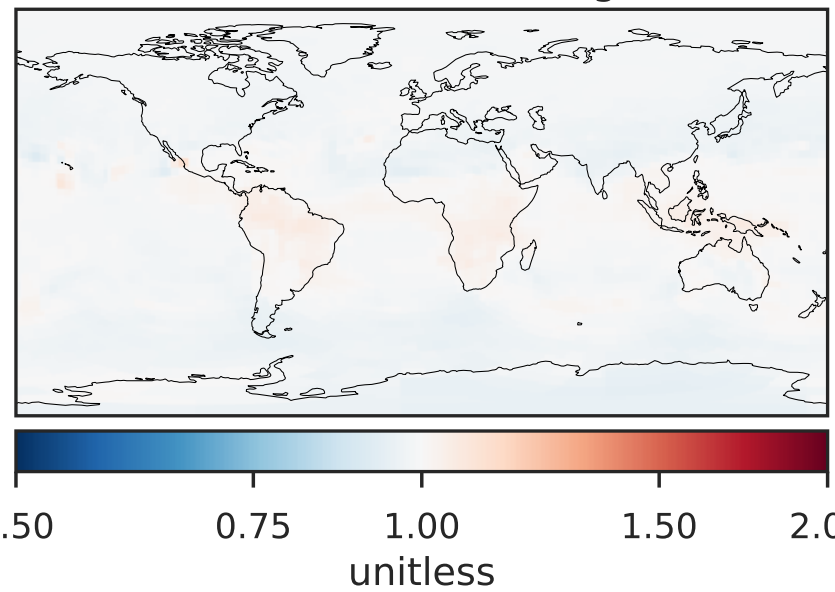
Difference (1x1.25)  
Dev - Ref, Restricted Range [5%,95%]



Ratio (1x1.25)  
Dev/Ref, Dynamic Range



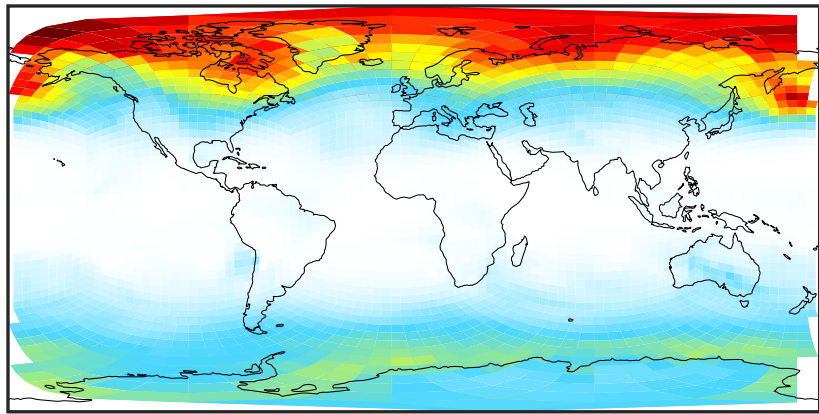
Ratio (1x1.25)  
Dev/Ref, Fixed Range





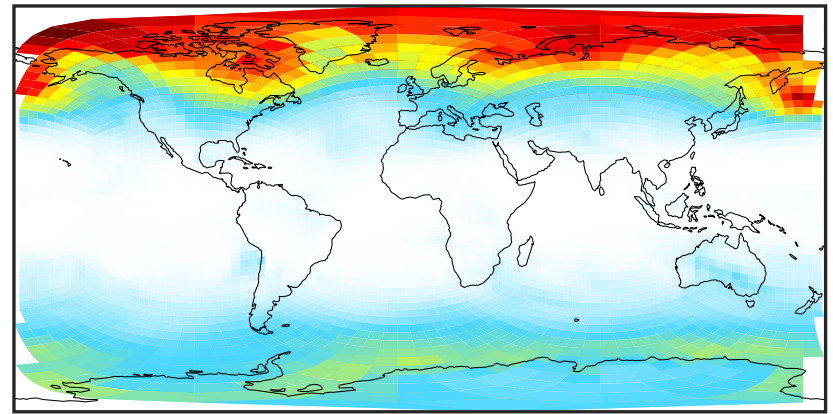
# SpeciesConcVV\_SALA (Jan2019)

14.2.0-rc.2 (Ref)  
c24



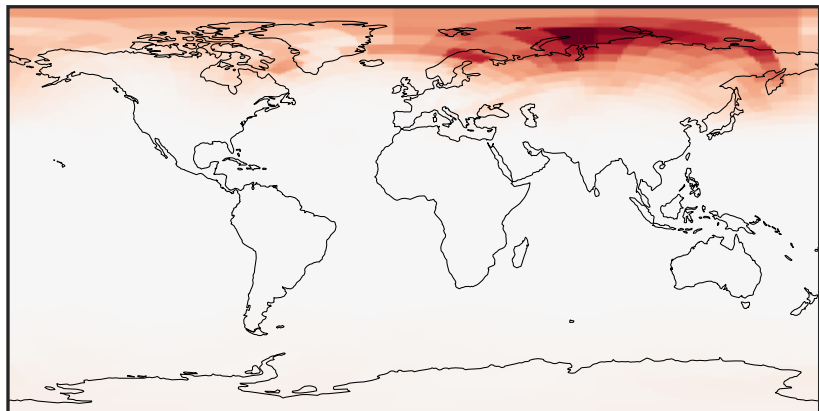
0.015 0.030 0.045  
 $\mu\text{g}/\text{m}^3$

14.3.0-rc.0 (Dev)  
c24



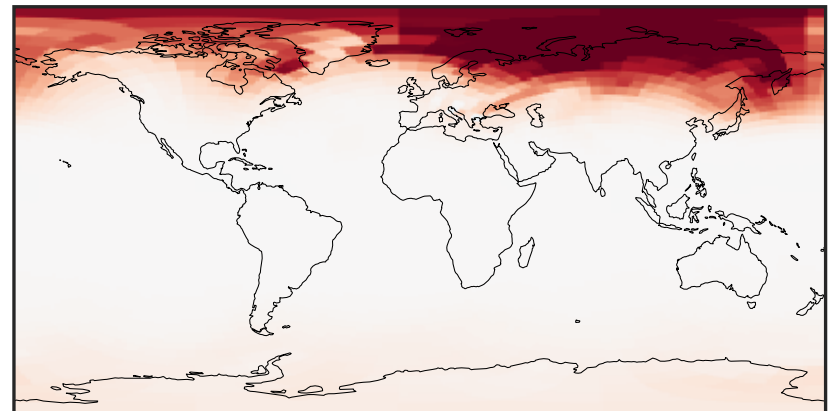
0.015 0.030 0.045  
 $\mu\text{g}/\text{m}^3$

Difference (1x1.25)  
Dev - Ref, Dynamic Range



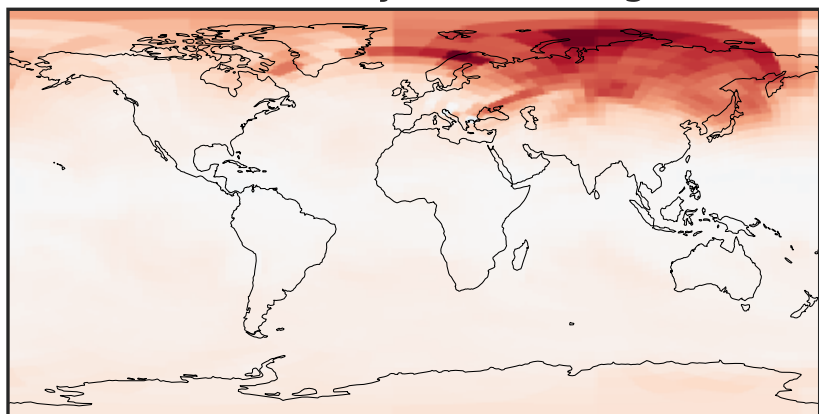
-0.0002 0.0000 0.0002  
 $\mu\text{g}/\text{m}^3$

Difference (1x1.25)  
Dev - Ref, Restricted Range [5%,95%]



-0.0001 0.0000 0.0001  
 $\mu\text{g}/\text{m}^3$

Ratio (1x1.25)  
Dev/Ref, Dynamic Range



0.99029 0.99514 1.00000 1.00490 1.00981  
unitless

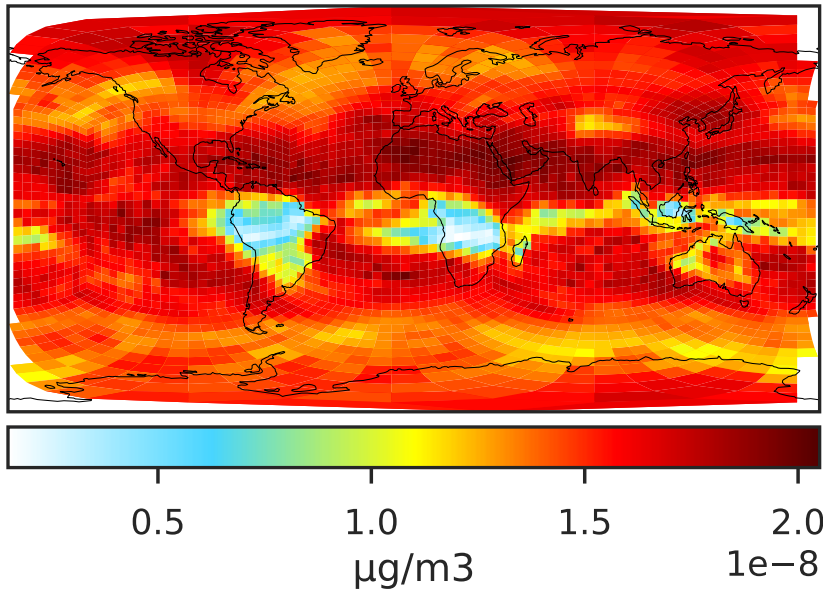
Ratio (1x1.25)  
Dev/Ref, Fixed Range



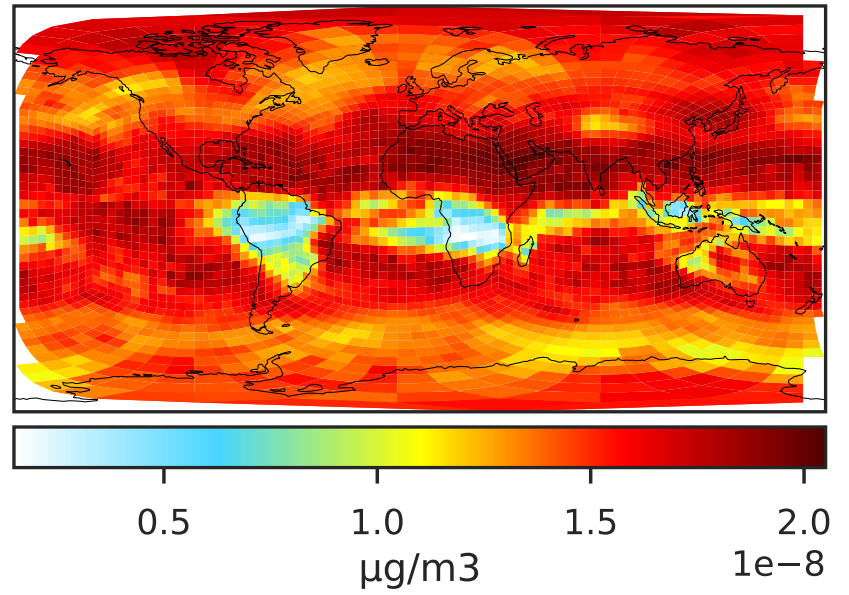
0.50 0.75 1.00 1.50 2.00  
unitless

# SpeciesConcVV\_SALAAAL (Jan2019)

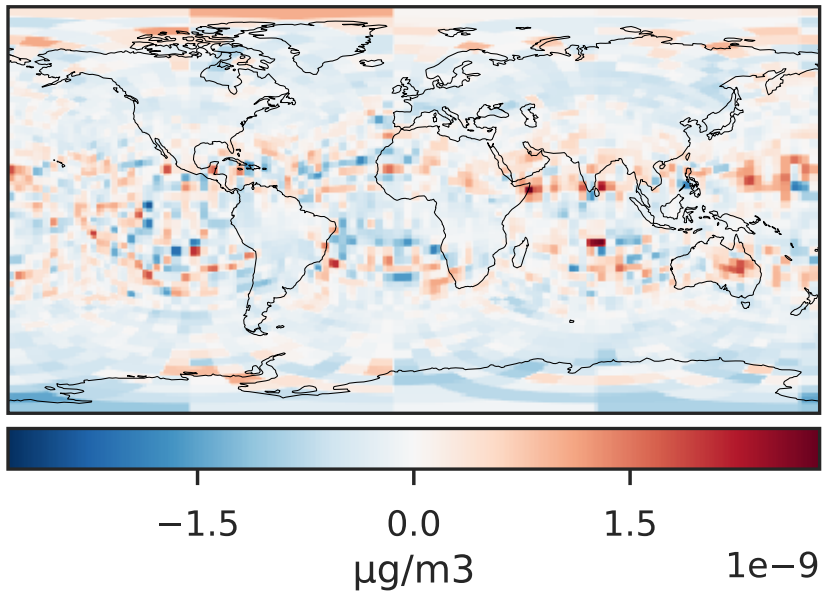
14.2.0-rc.2 (Ref)  
c24



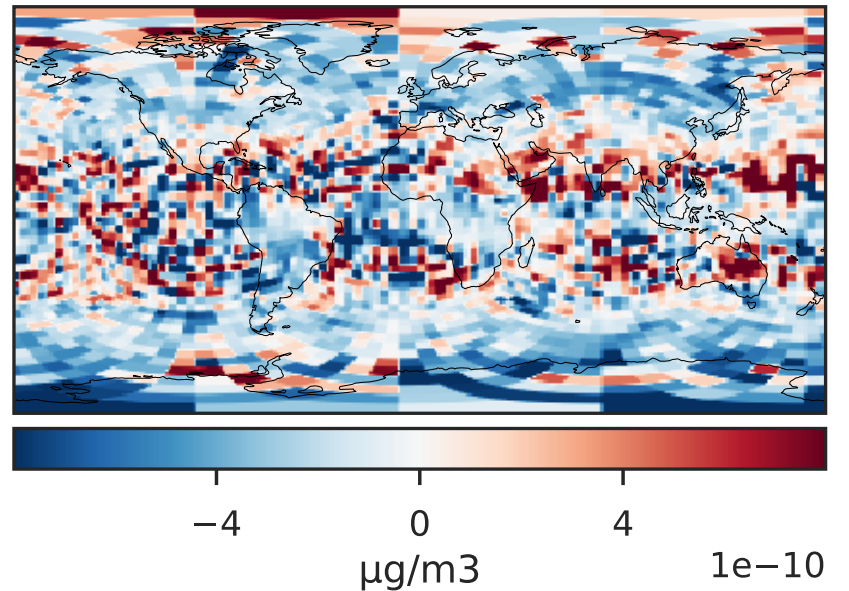
14.3.0-rc.0 (Dev)  
c24



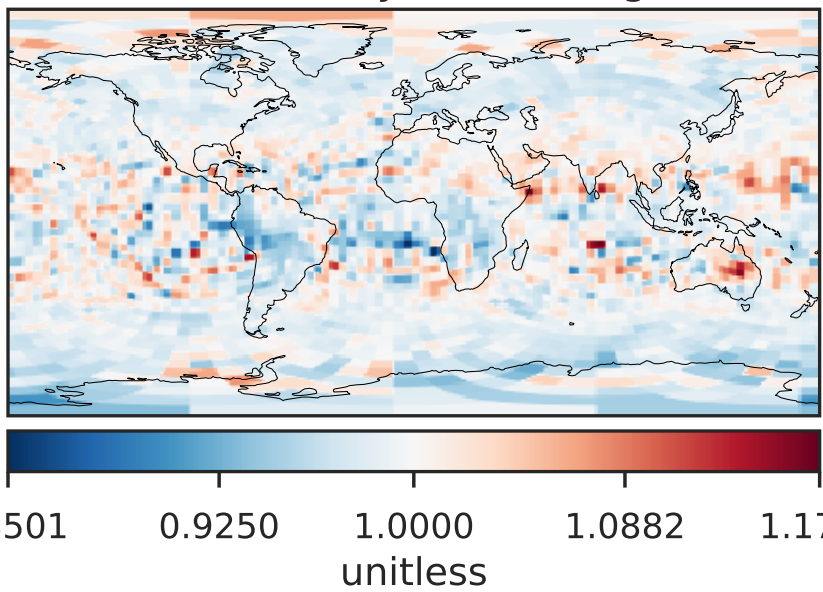
Difference (1x1.25)  
Dev - Ref, Dynamic Range



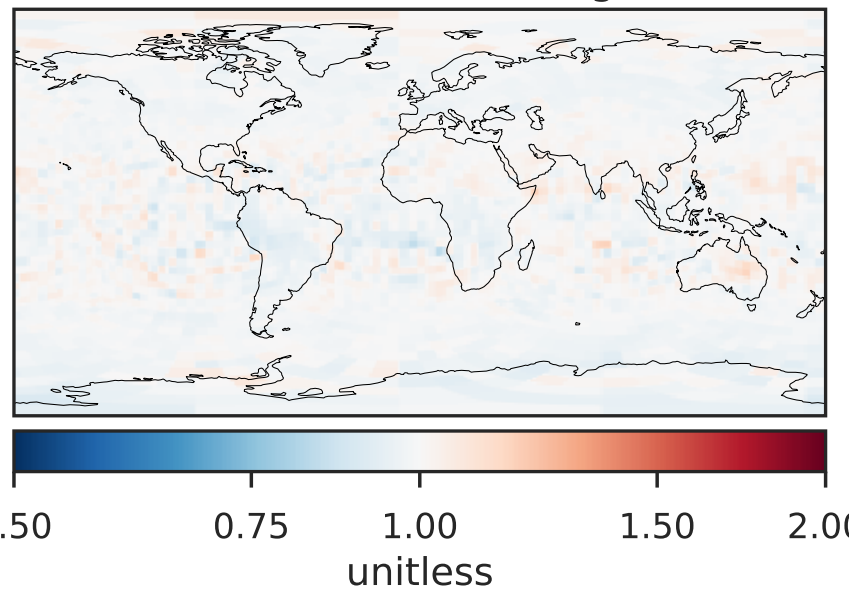
Difference (1x1.25)  
Dev - Ref, Restricted Range [5%,95%]



Ratio (1x1.25)  
Dev/Ref, Dynamic Range

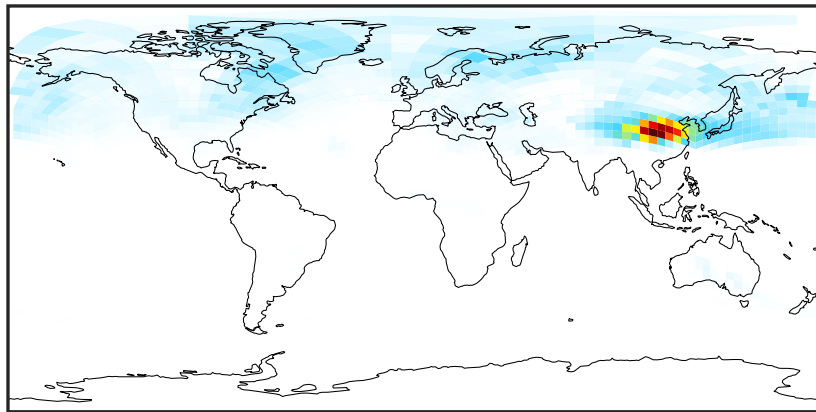


Ratio (1x1.25)  
Dev/Ref, Fixed Range



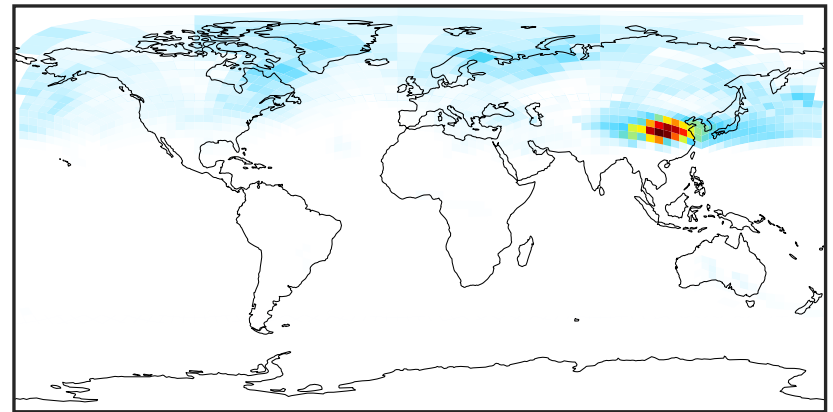
# SpeciesConcVV\_SALACL (Jan2019)

14.2.0-rc.2 (Ref)  
c24



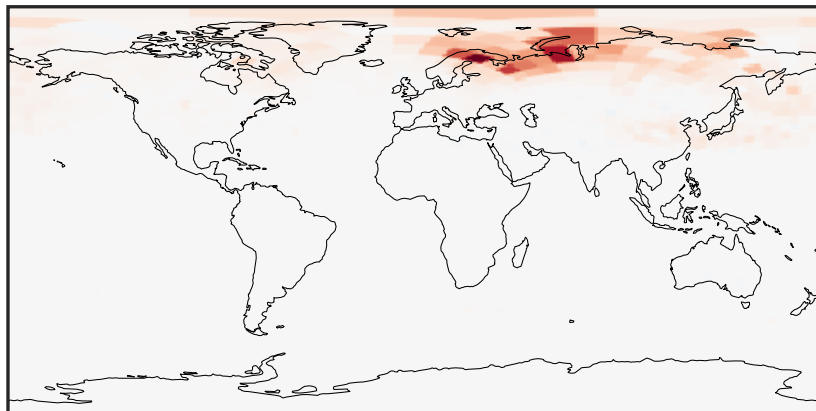
0.000 0.003 0.006 0.009  
µg/m<sup>3</sup>

14.3.0-rc.0 (Dev)  
c24



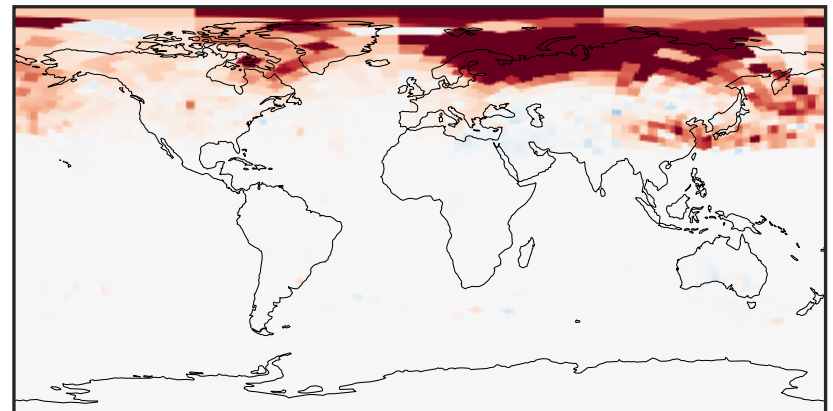
0.000 0.003 0.006 0.009  
µg/m<sup>3</sup>

Difference (1x1.25)  
Dev - Ref, Dynamic Range



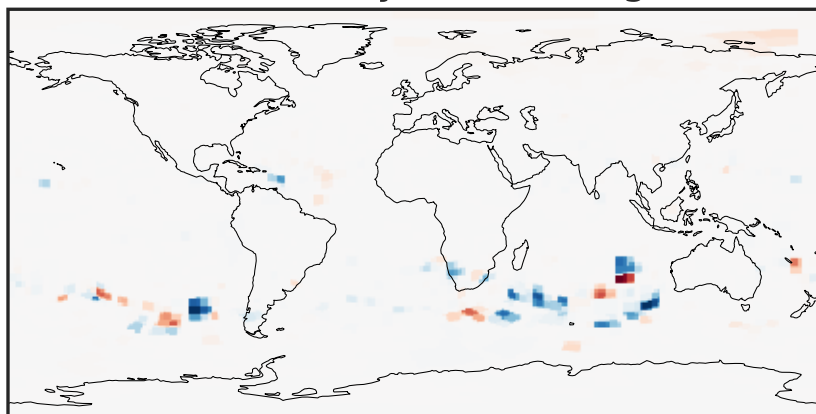
-0.0003 0.0000 0.0003  
µg/m<sup>3</sup>

Difference (1x1.25)  
Dev - Ref, Restricted Range [5%,95%]



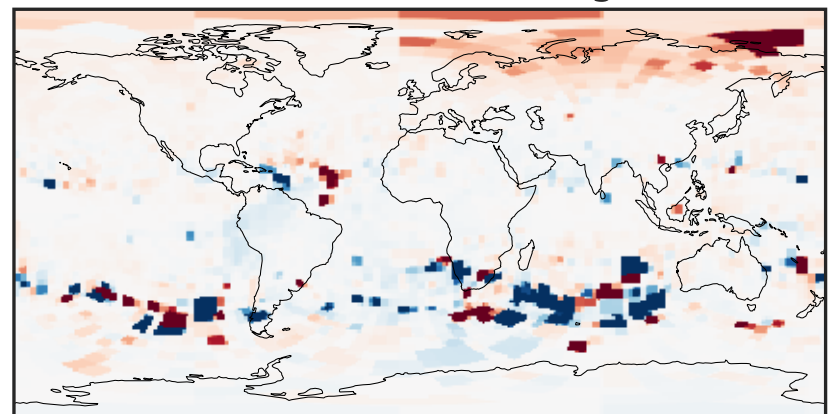
-4 0 4  
µg/m<sup>3</sup> 1e-5

Ratio (1x1.25)  
Dev/Ref, Dynamic Range



unitless

Ratio (1x1.25)  
Dev/Ref, Fixed Range

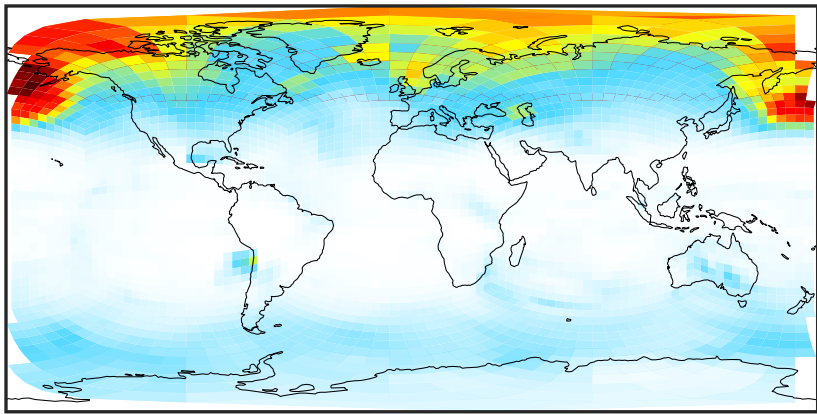


0.50 0.75 1.00 1.50 2.00  
unitless



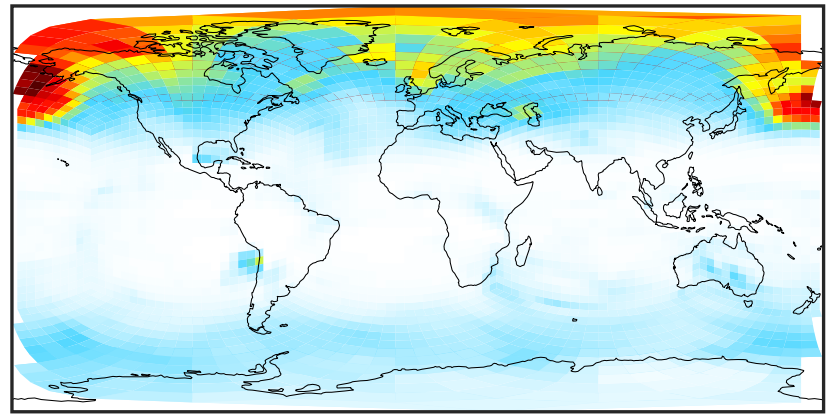
# SpeciesConcVV\_SALC (Jan2019)

14.2.0-rc.2 (Ref)  
c24



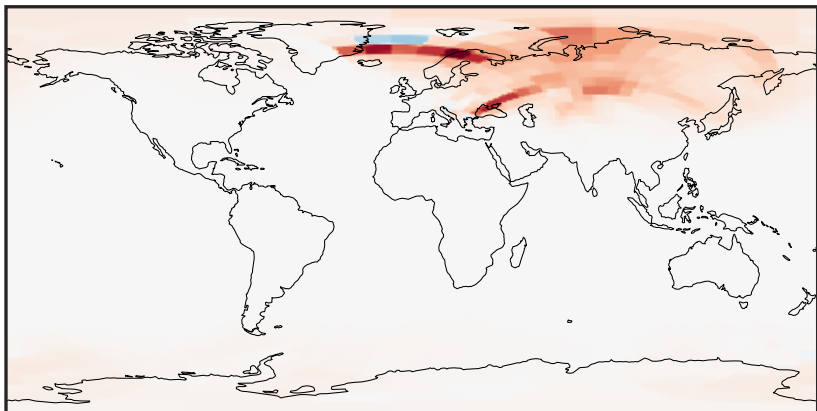
0.0000 0.0262 0.0524 0.0786 0.1048  
 $\mu\text{g}/\text{m}^3$

14.3.0-rc.0 (Dev)  
c24



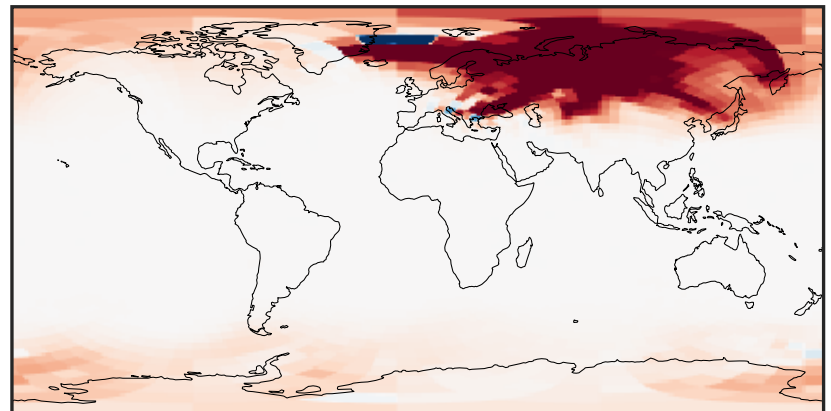
0.0000 0.0262 0.0524 0.0786 0.1048  
 $\mu\text{g}/\text{m}^3$

Difference (1x1.25)  
Dev - Ref, Dynamic Range



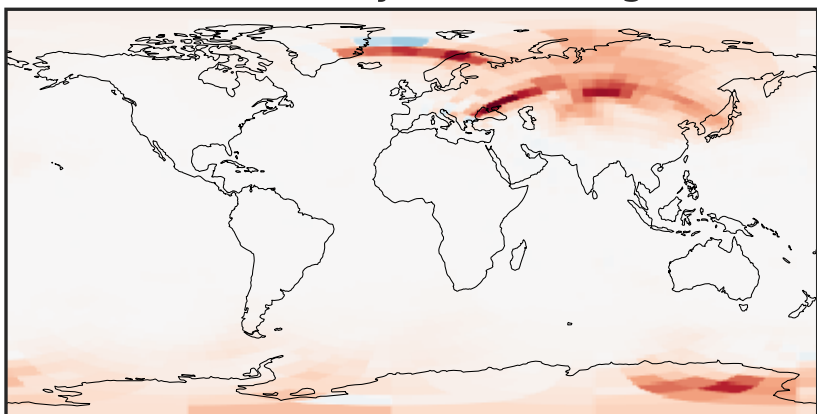
-0.00015 0.00000 0.00015  
 $\mu\text{g}/\text{m}^3$

Difference (1x1.25)  
Dev - Ref, Restricted Range [5%,95%]



-3 0 3  
 $\mu\text{g}/\text{m}^3$   $1\text{e}-5$

Ratio (1x1.25)  
Dev/Ref, Dynamic Range



0.99297 0.99649 1.00000 1.00354 1.00708  
unitless

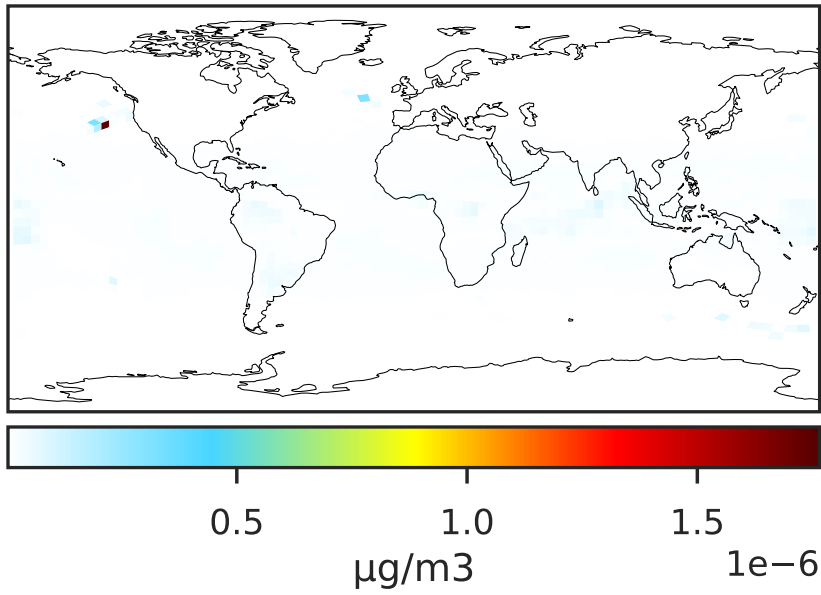
Ratio (1x1.25)  
Dev/Ref, Fixed Range



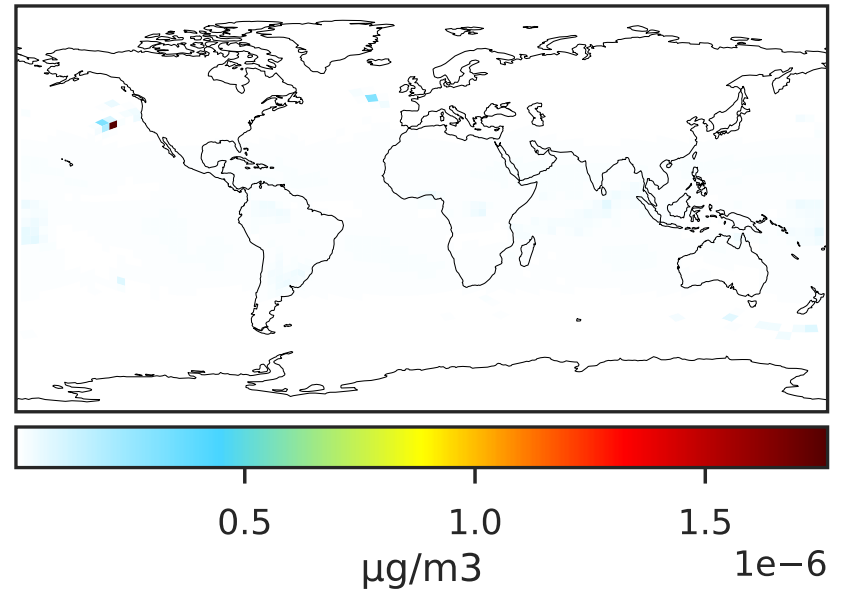
0.50 0.75 1.00 1.50 2.00  
unitless

# SpeciesConcVV\_SALCAL (Jan2019)

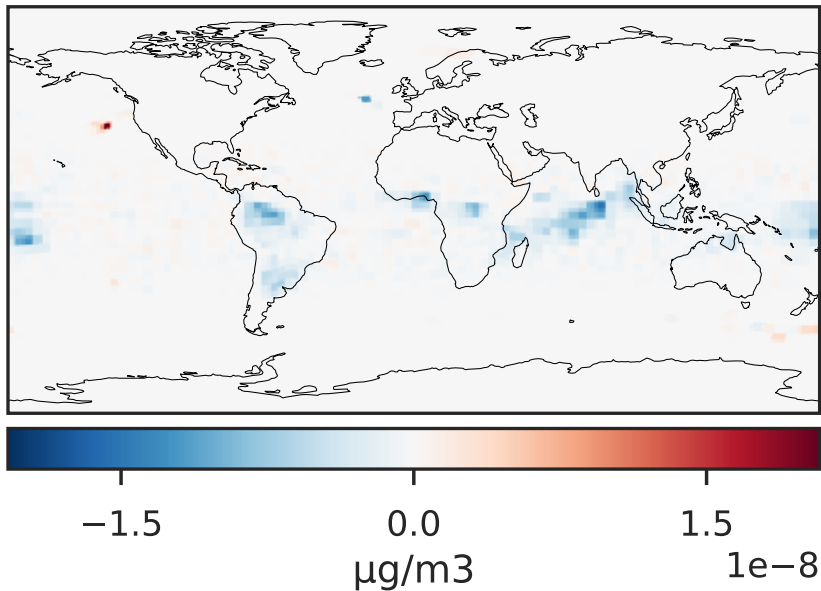
14.2.0-rc.2 (Ref)  
c24



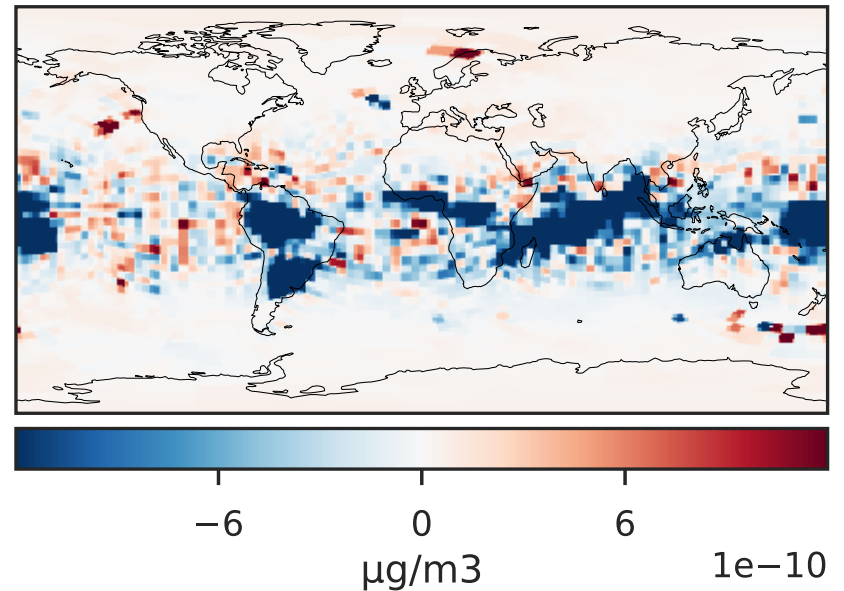
14.3.0-rc.0 (Dev)  
c24



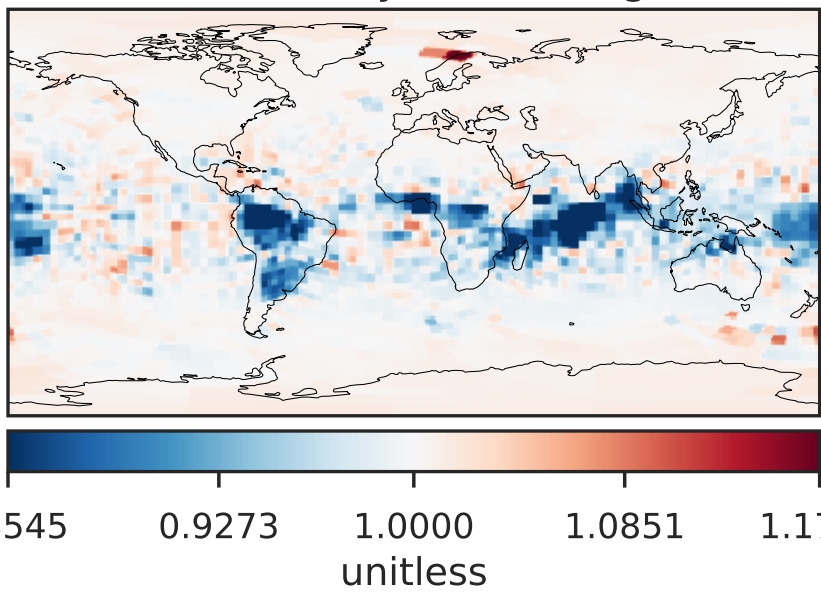
Difference (1x1.25)  
Dev - Ref, Dynamic Range



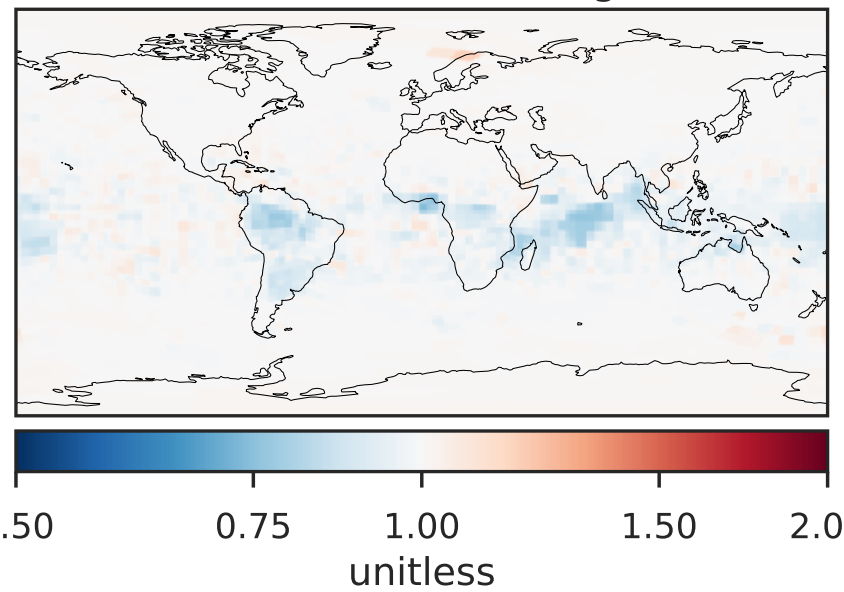
Difference (1x1.25)  
Dev - Ref, Restricted Range [5%,95%]



Ratio (1x1.25)  
Dev/Ref, Dynamic Range

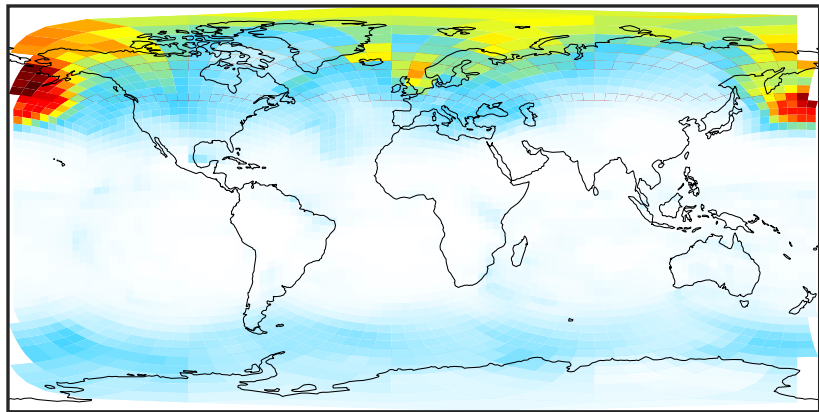


Ratio (1x1.25)  
Dev/Ref, Fixed Range



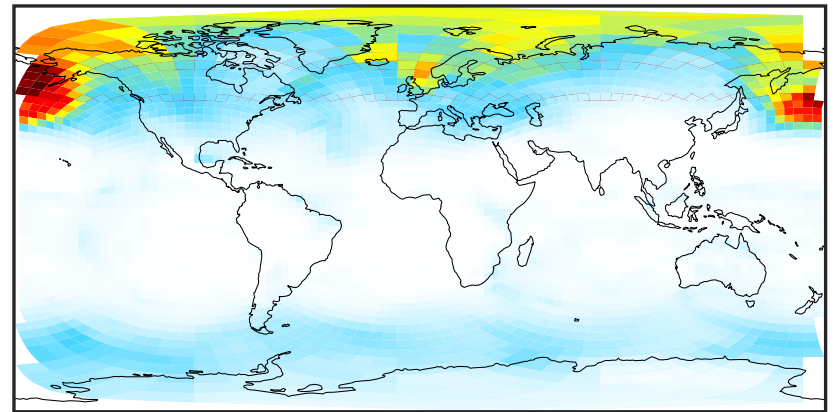
# SpeciesConcVV\_SALCCL (Jan2019)

14.2.0-rc.2 (Ref)  
c24



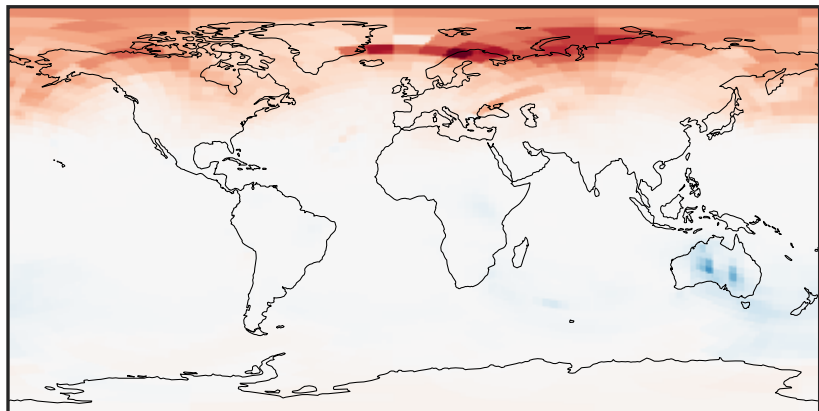
0.015 0.030 0.045  
 $\mu\text{g}/\text{m}^3$

14.3.0-rc.0 (Dev)  
c24



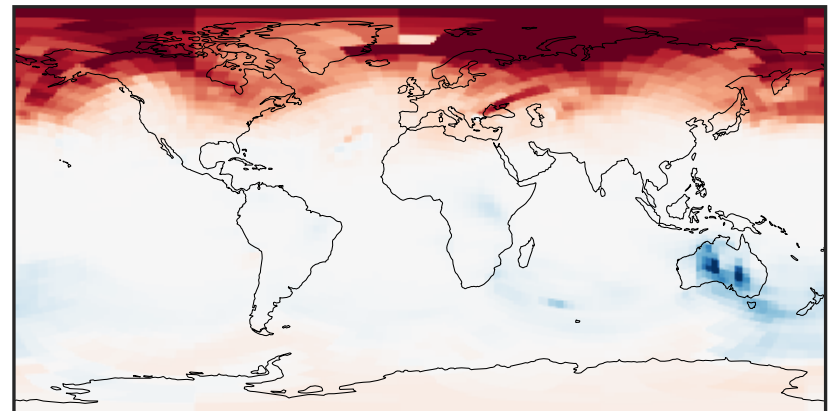
0.015 0.030 0.045  
 $\mu\text{g}/\text{m}^3$

Difference (1x1.25)  
Dev - Ref, Dynamic Range



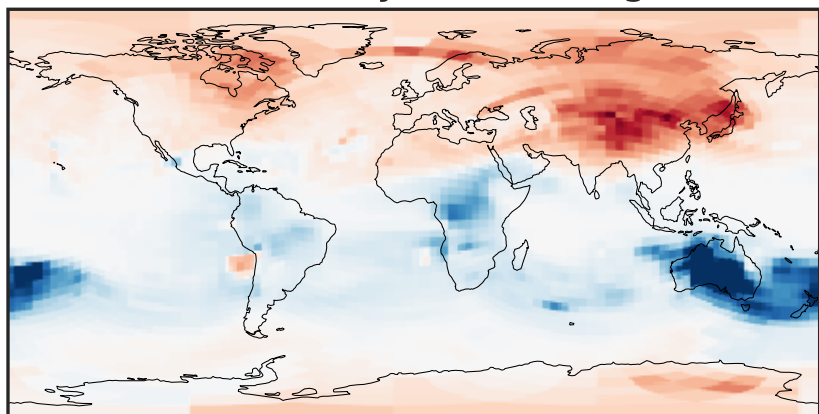
-0.00015 0.00000 0.00015  
 $\mu\text{g}/\text{m}^3$

Difference (1x1.25)  
Dev - Ref, Restricted Range [5%,95%]



-6 0 6  
 $\mu\text{g}/\text{m}^3$   $1\text{e}-5$

Ratio (1x1.25)  
Dev/Ref, Dynamic Range



0.97452 0.98726 1.00000 1.01307 1.02615  
unitless

Ratio (1x1.25)  
Dev/Ref, Fixed Range

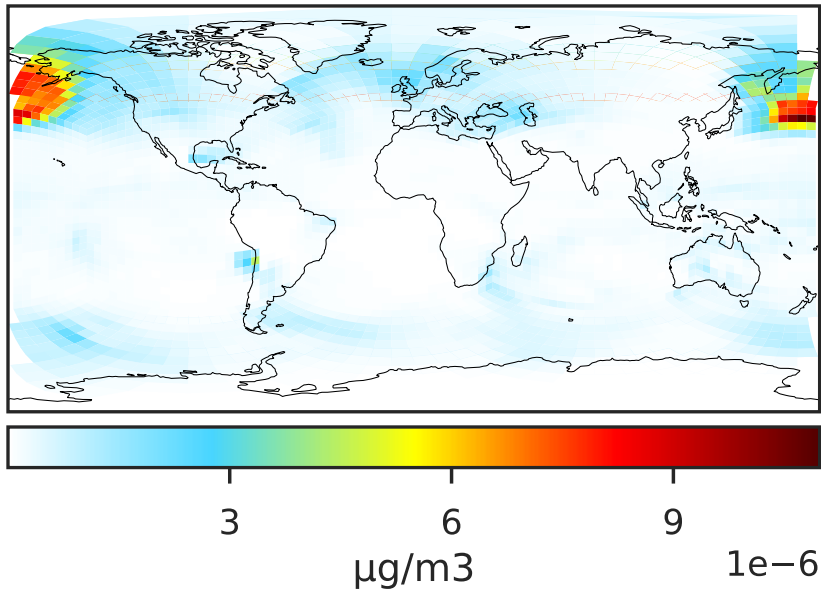


0.50 0.75 1.00 1.50 2.00  
unitless

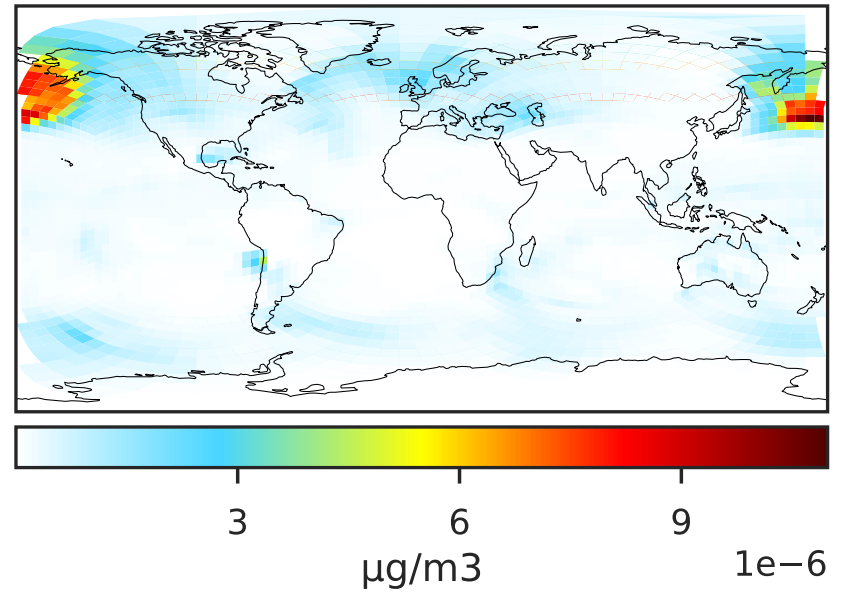


# SpeciesConcVV\_SO4s (Jan2019)

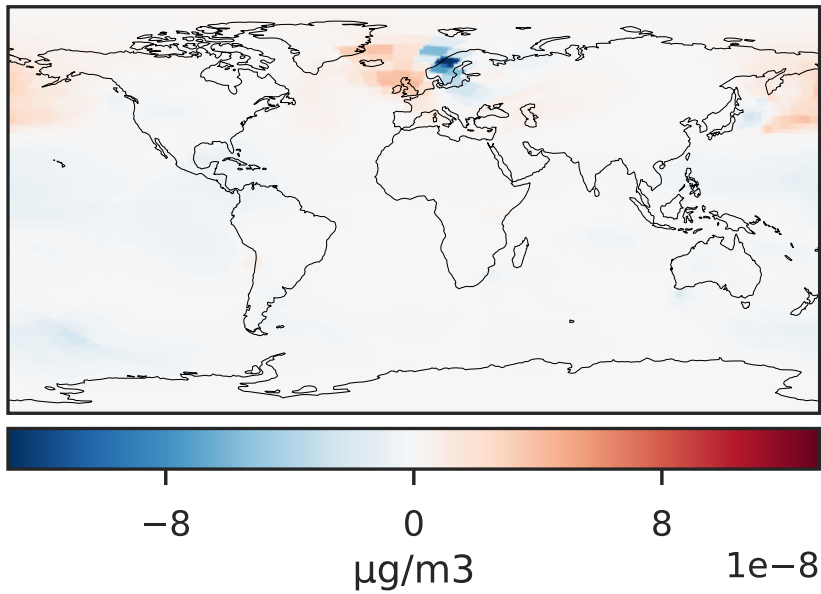
14.2.0-rc.2 (Ref)  
c24



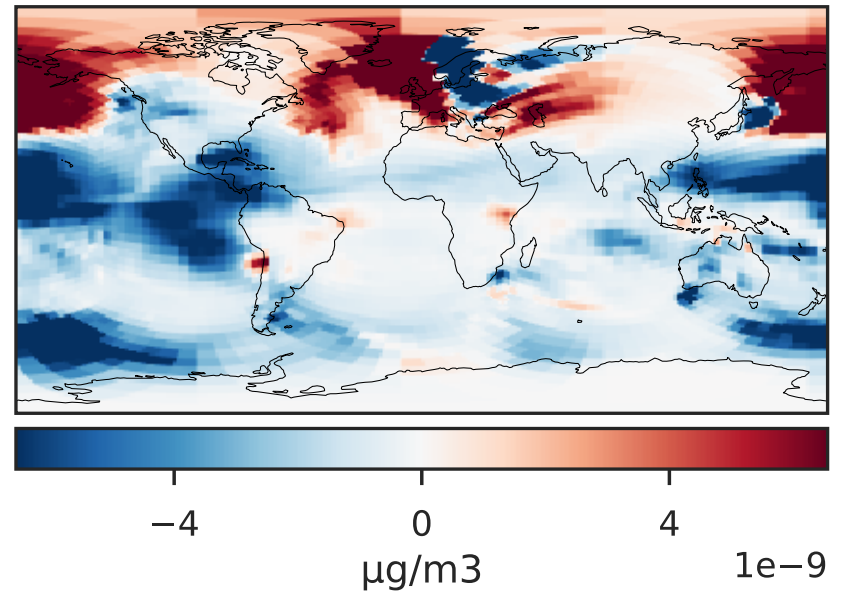
14.3.0-rc.0 (Dev)  
c24



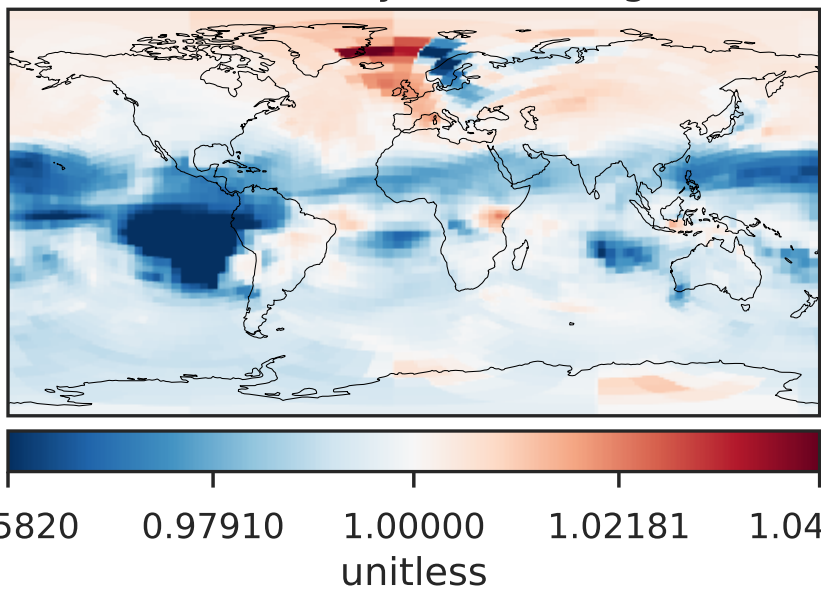
Difference (1x1.25)  
Dev - Ref, Dynamic Range



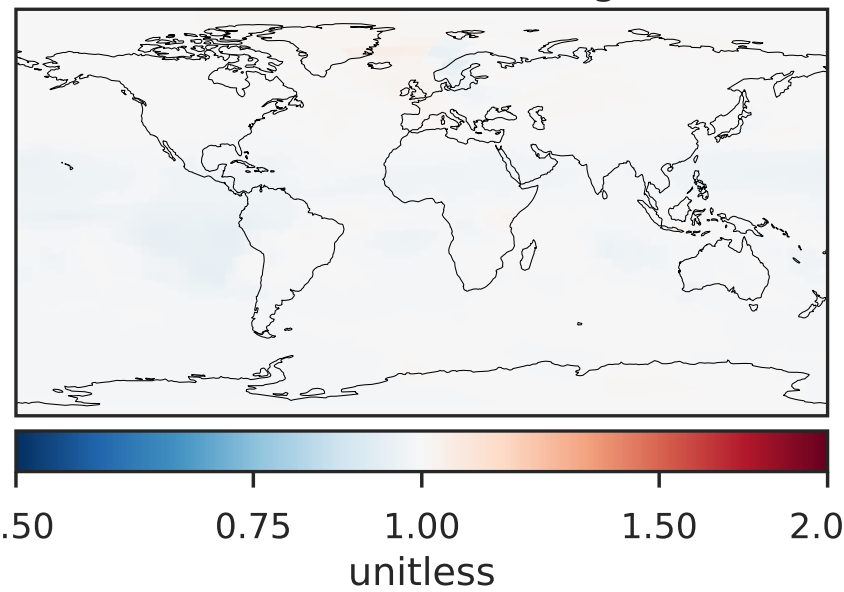
Difference (1x1.25)  
Dev - Ref, Restricted Range [5%,95%]



Ratio (1x1.25)  
Dev/Ref, Dynamic Range

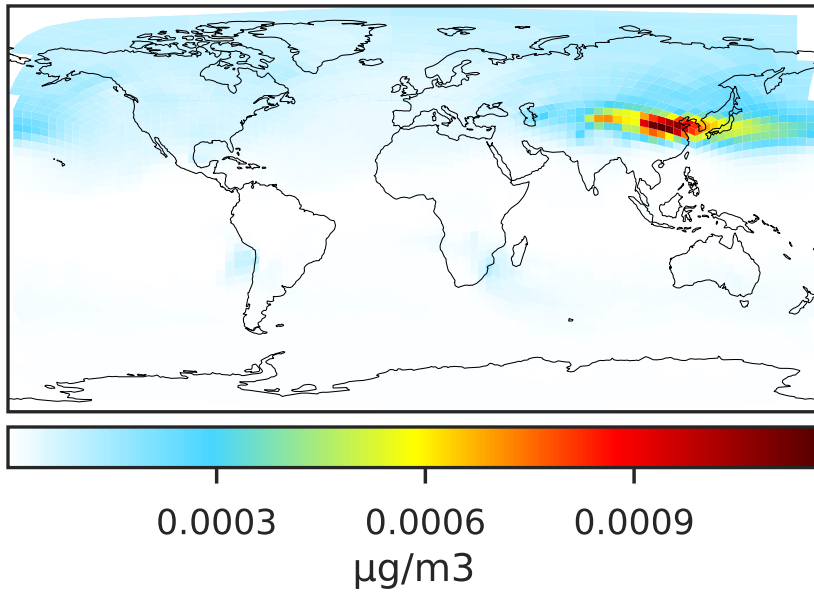


Ratio (1x1.25)  
Dev/Ref, Fixed Range

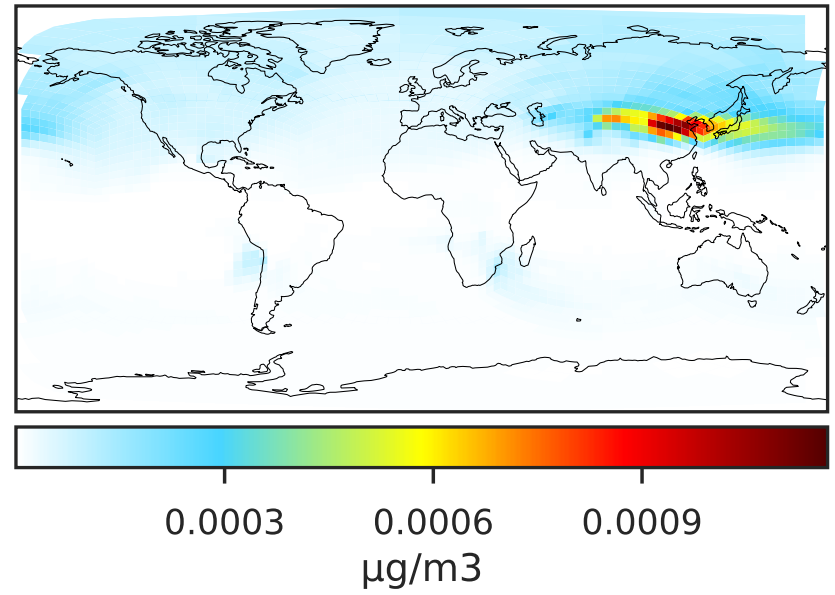


# SpeciesConcVV\_pFe (Jan2019)

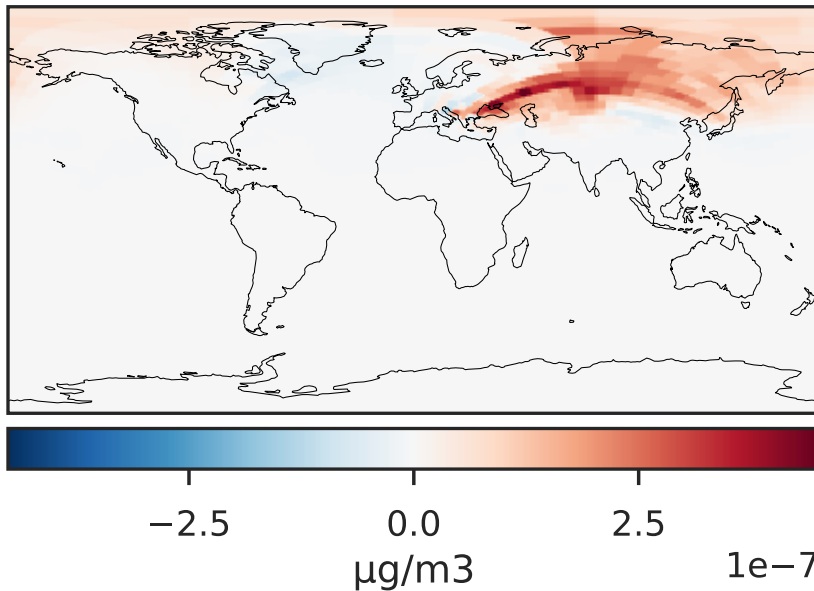
14.2.0-rc.2 (Ref)  
c24



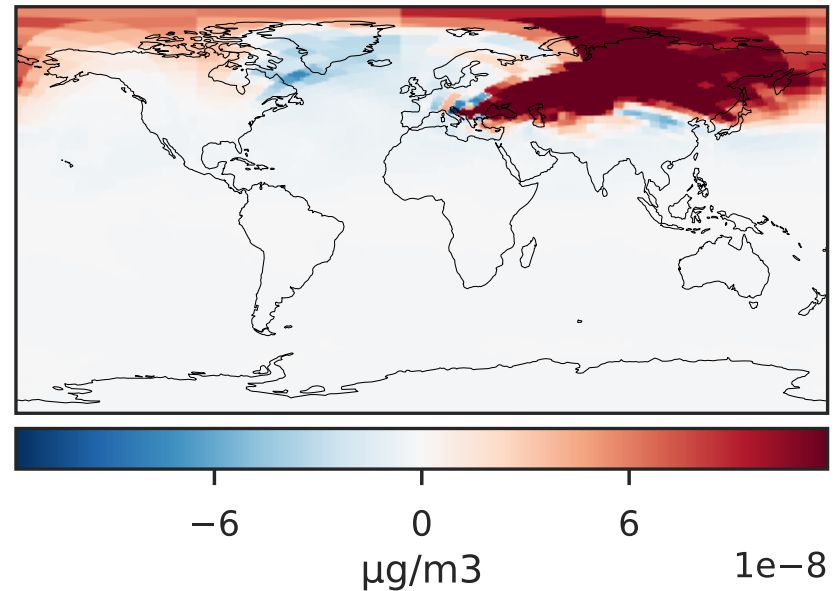
14.3.0-rc.0 (Dev)  
c24



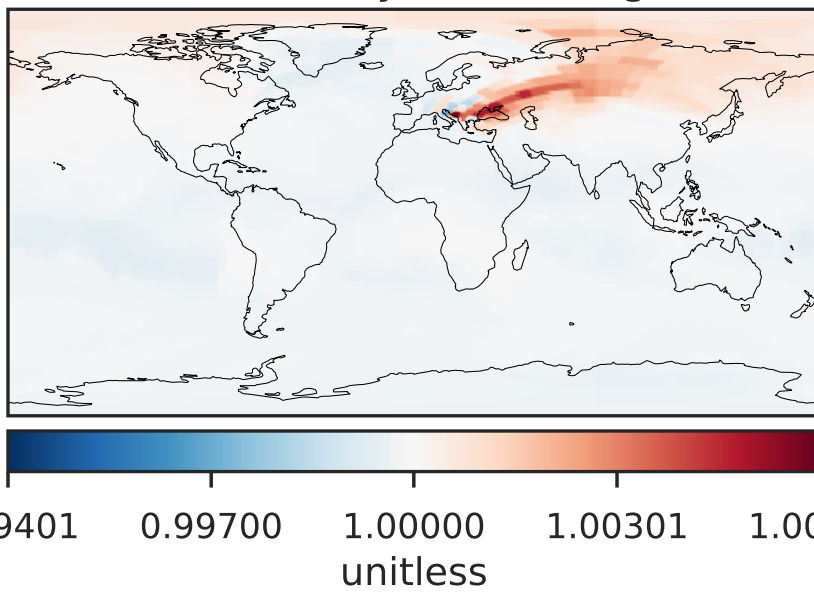
Difference (1x1.25)  
Dev - Ref, Dynamic Range



Difference (1x1.25)  
Dev - Ref, Restricted Range [5%,95%]



Ratio (1x1.25)  
Dev/Ref, Dynamic Range



Ratio (1x1.25)  
Dev/Ref, Fixed Range

