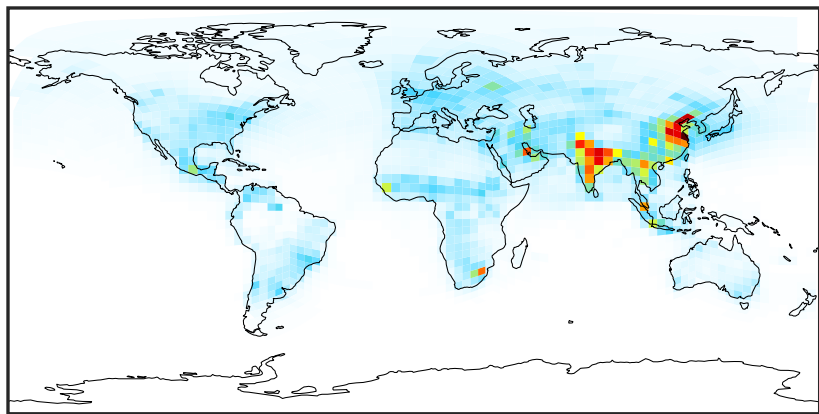


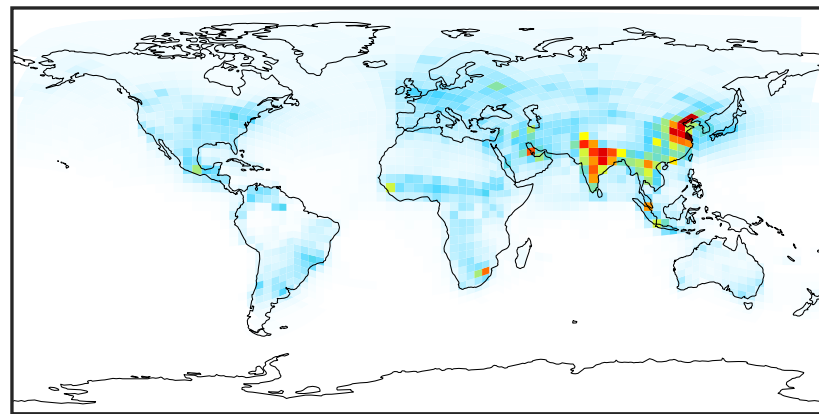
SpeciesConcVV_NOy (Apr2019)

14.2.0-rc.2 (Ref)
c24



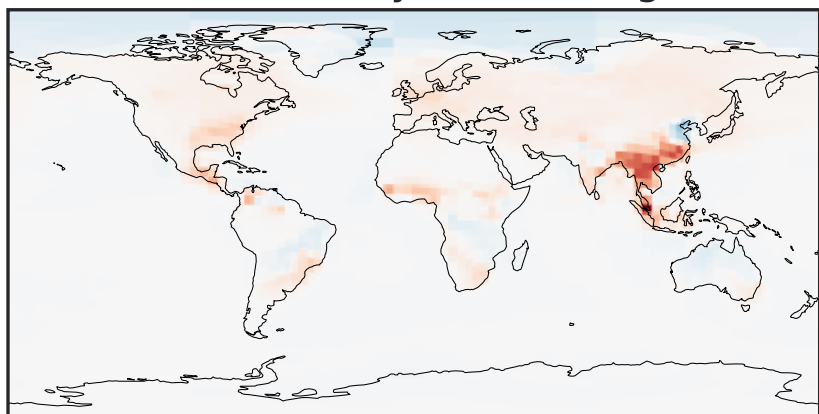
0.01 3.54 7.08 10.61 14.14
ppb

14.3.0-rc.0 (Dev)
c24



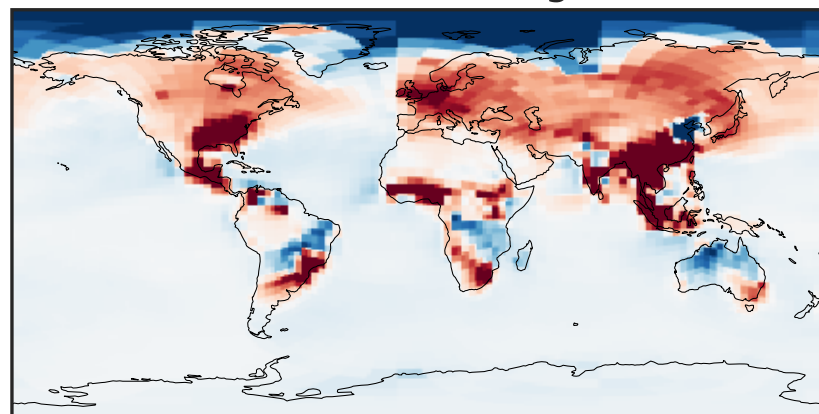
0.01 3.54 7.08 10.61 14.14
ppb

Difference (1x1.25)
Dev - Ref, Dynamic Range



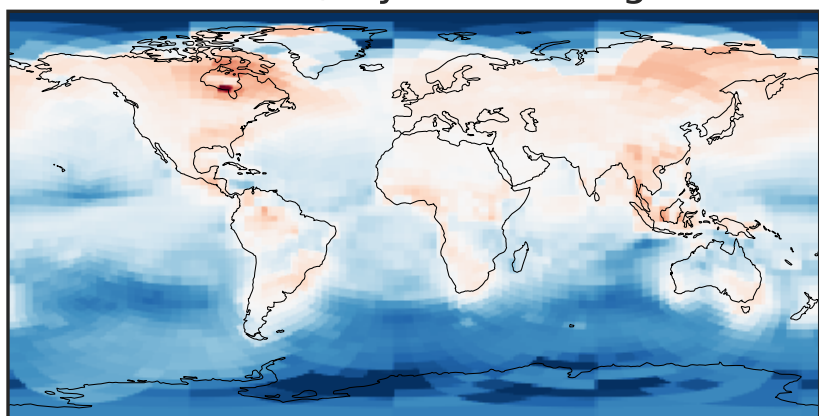
-0.1089 -0.0544 0.0000 0.0544 0.1089
ppb

Difference (1x1.25)
Dev - Ref, Restricted Range [5%,95%]



-0.008 0.000 0.008
ppb

Ratio (1x1.25)
Dev/Ref, Dynamic Range



0.9430 0.9715 1.0000 1.0302 1.0604
unitless

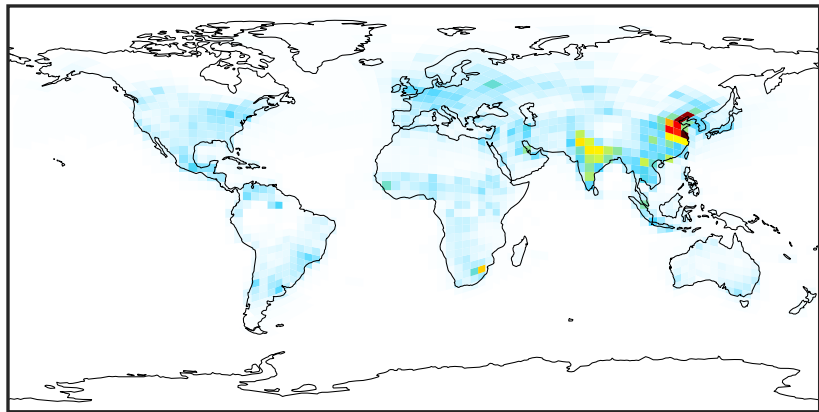
Ratio (1x1.25)
Dev/Ref, Fixed Range



0.50 0.75 1.00 1.50 2.00
unitless

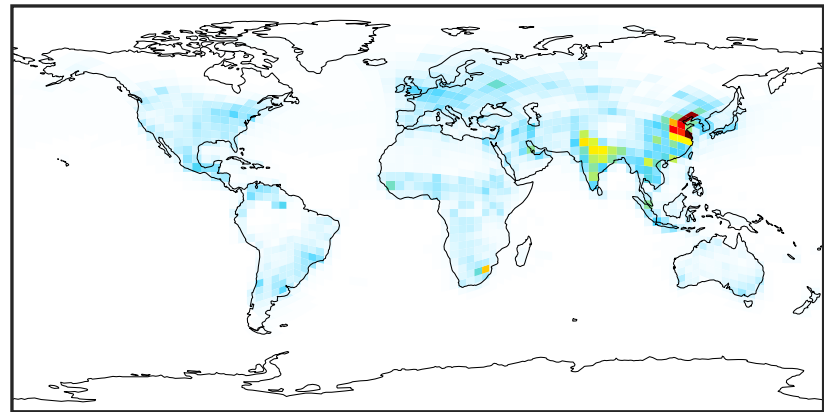
SpeciesConcVV_NOx (Apr2019)

14.2.0-rc.2 (Ref)
c24



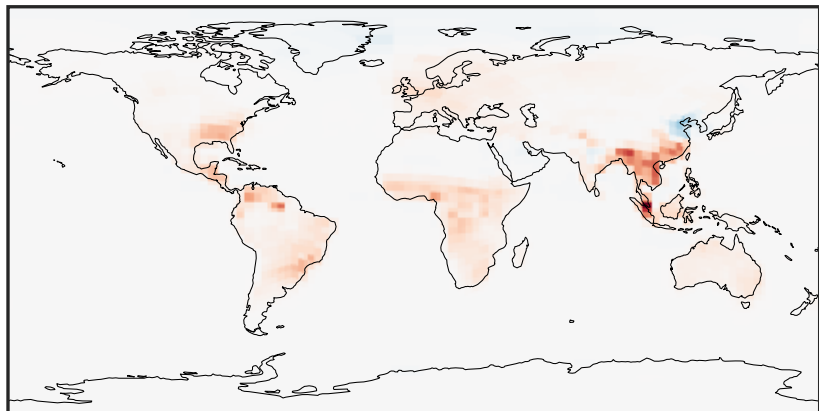
0.00 2.83 5.65 8.48 11.30
ppb

14.3.0-rc.0 (Dev)
c24



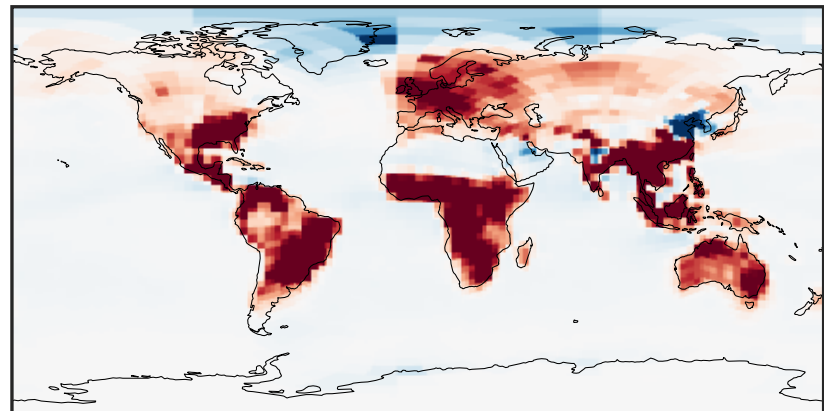
0.00 2.83 5.65 8.48 11.30
ppb

Difference (1x1.25)
Dev - Ref, Dynamic Range



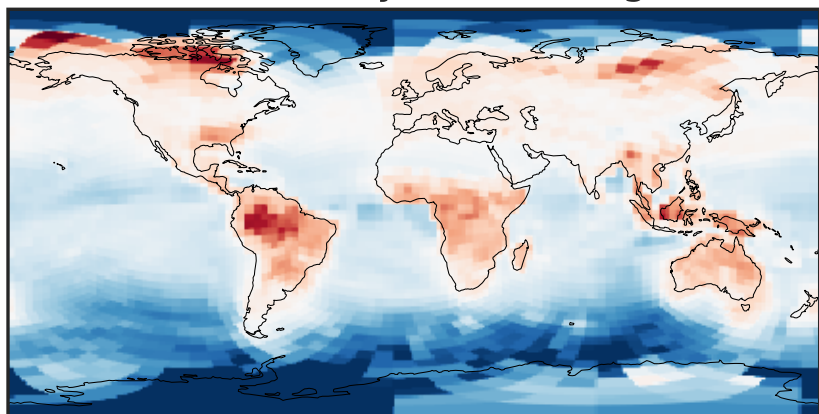
-0.1706 -0.0853 0.0000 0.0853 0.1706
ppb

Difference (1x1.25)
Dev - Ref, Restricted Range [5%,95%]



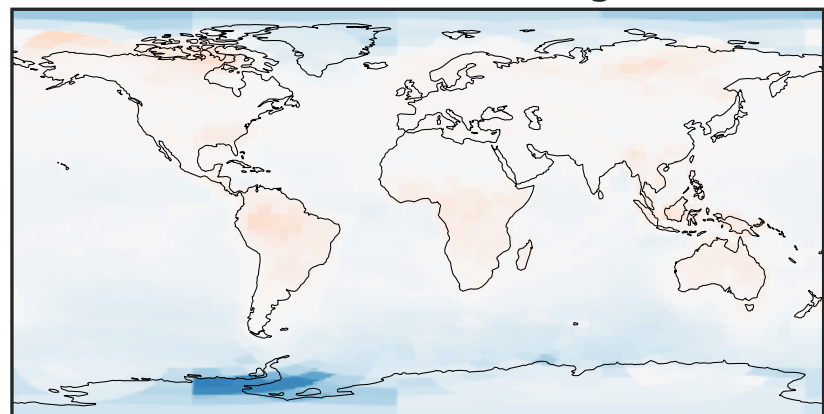
-0.008 0.000 0.008
ppb

Ratio (1x1.25)
Dev/Ref, Dynamic Range



0.8766 0.9383 1.0000 1.0704 1.1407
unitless

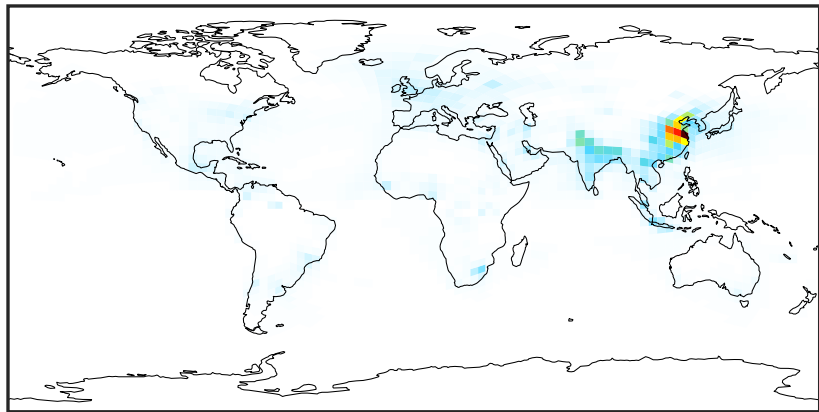
Ratio (1x1.25)
Dev/Ref, Fixed Range



0.50 0.75 1.00 1.50 2.00
unitless

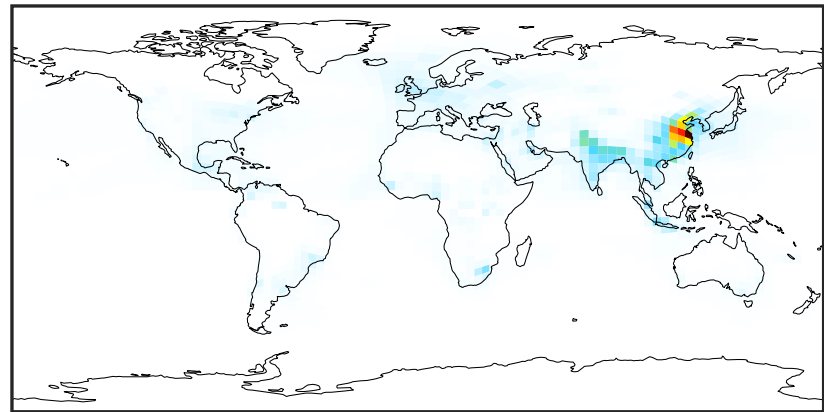
SpeciesConcVV_HNO2 (Apr2019)

14.2.0-rc.2 (Ref)
c24



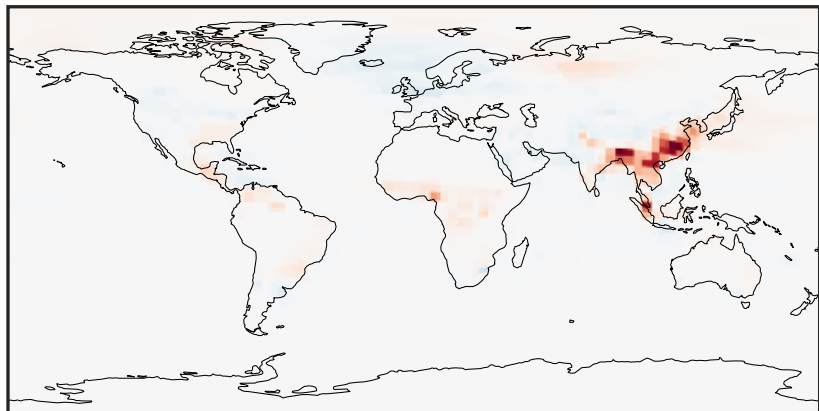
0.0000 0.0554 0.1108 0.1662 0.2216
ppb

14.3.0-rc.0 (Dev)
c24



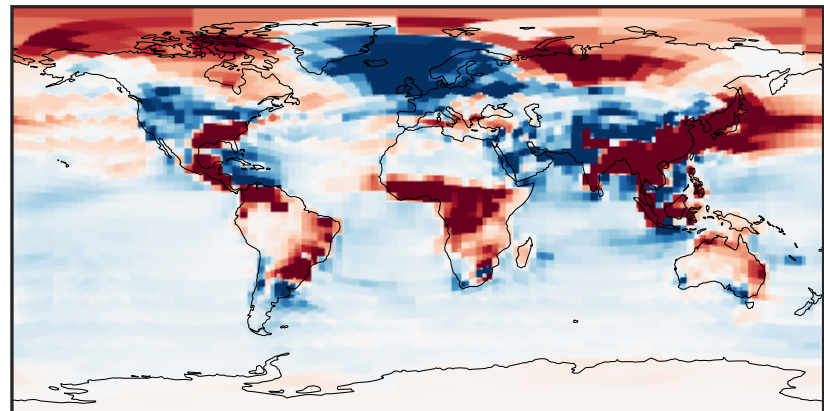
0.0000 0.0554 0.1108 0.1662 0.2216
ppb

Difference (1x1.25)
Dev - Ref, Dynamic Range



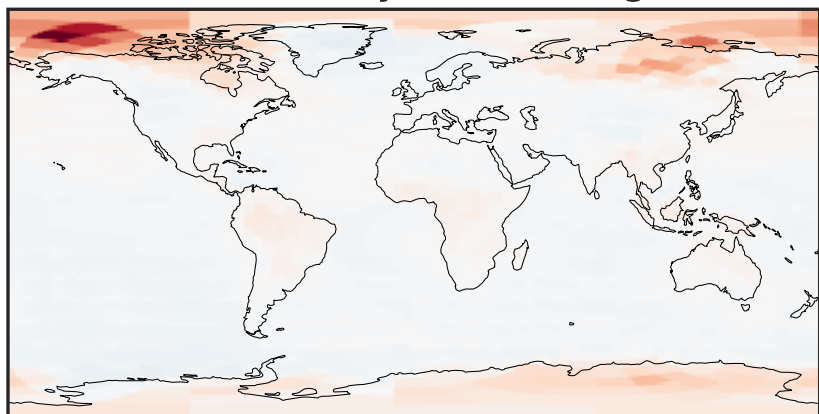
-0.0008 0.0000 0.0008
ppb

Difference (1x1.25)
Dev - Ref, Restricted Range [5%,95%]



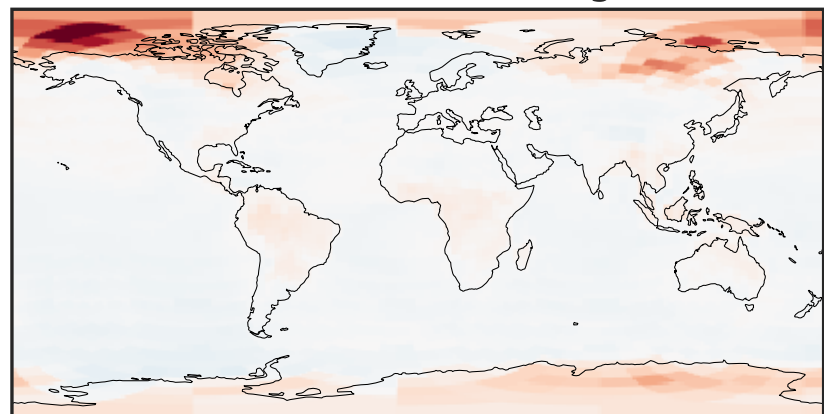
-3 0 3
ppb 1e-5

Ratio (1x1.25)
Dev/Ref, Dynamic Range



0.42 0.71 1.00 1.69 2.38
unitless

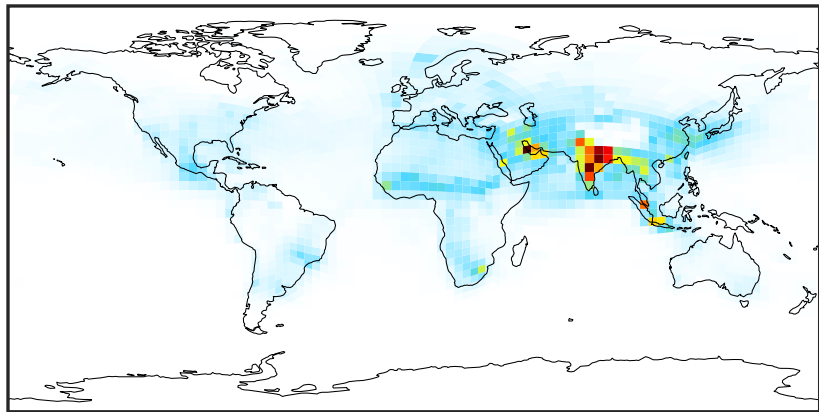
Ratio (1x1.25)
Dev/Ref, Fixed Range



0.50 0.75 1.00 1.50 2.00
unitless

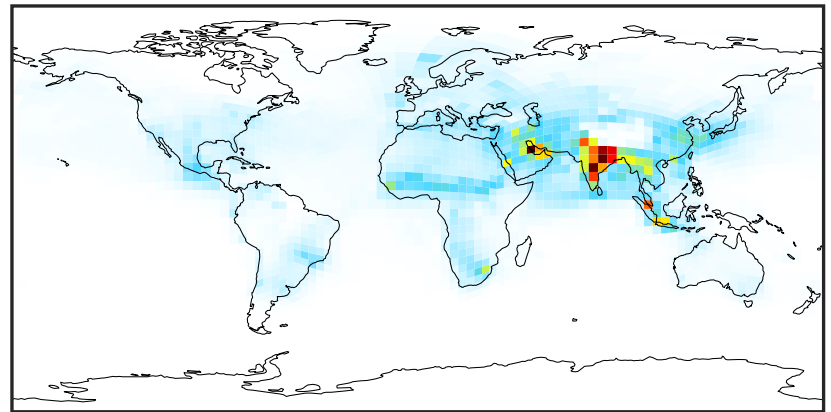
SpeciesConcVV_HNO3 (Apr2019)

14.2.0-rc.2 (Ref)
c24



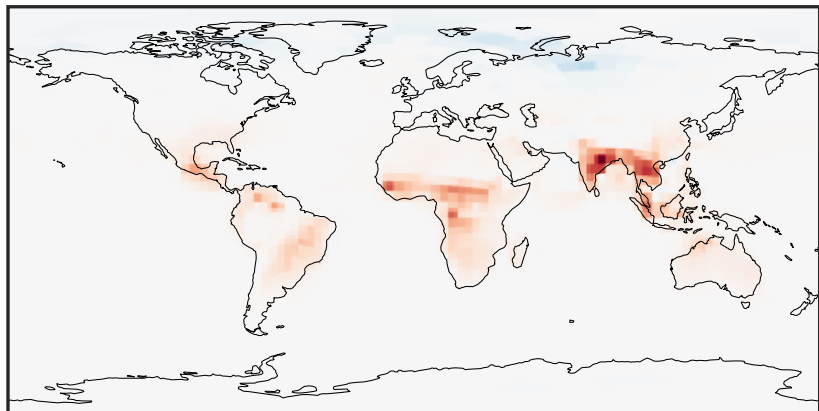
0.000 1.234 2.468 3.702 4.937
ppb

14.3.0-rc.0 (Dev)
c24



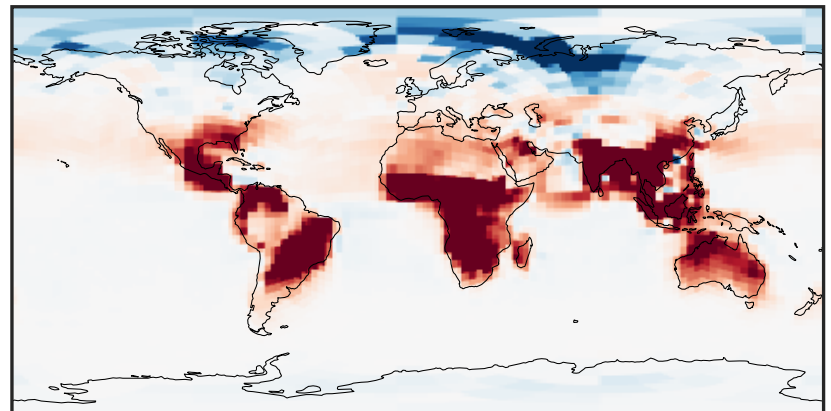
0.000 1.234 2.468 3.702 4.937
ppb

Difference (1x1.25)
Dev - Ref, Dynamic Range



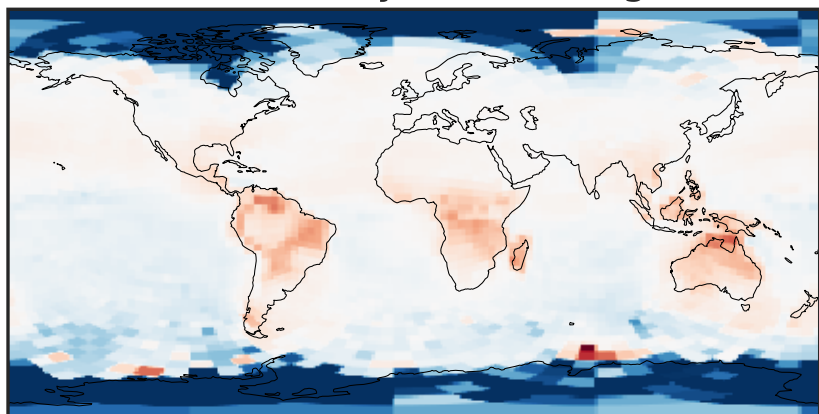
-0.0721 -0.0361 0.0000 0.0361 0.0721
ppb

Difference (1x1.25)
Dev - Ref, Restricted Range [5%,95%]



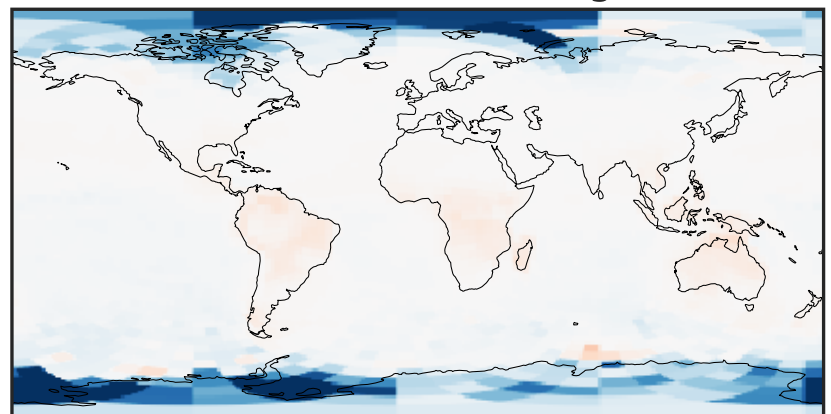
-0.003 0.000 0.003
ppb

Ratio (1x1.25)
Dev/Ref, Dynamic Range



0.8347 0.9173 1.0000 1.0990 1.1981
unitless

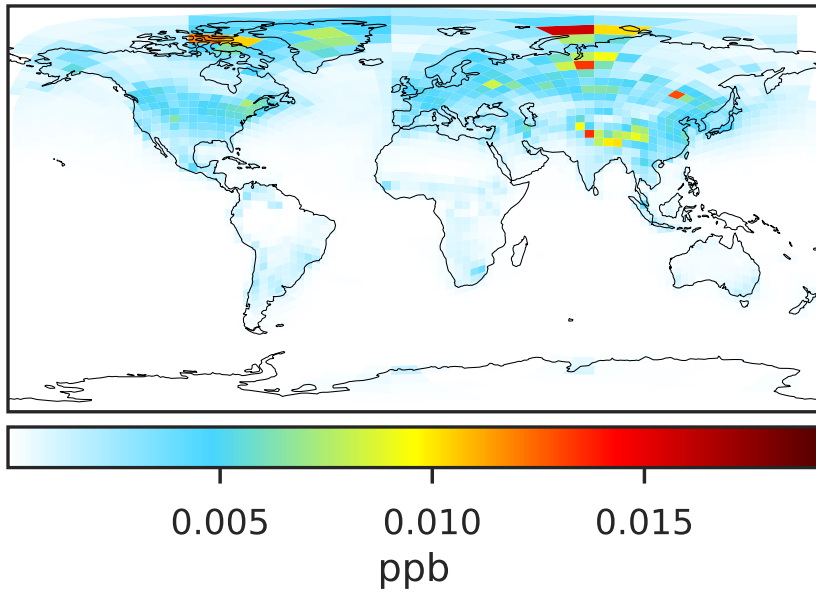
Ratio (1x1.25)
Dev/Ref, Fixed Range



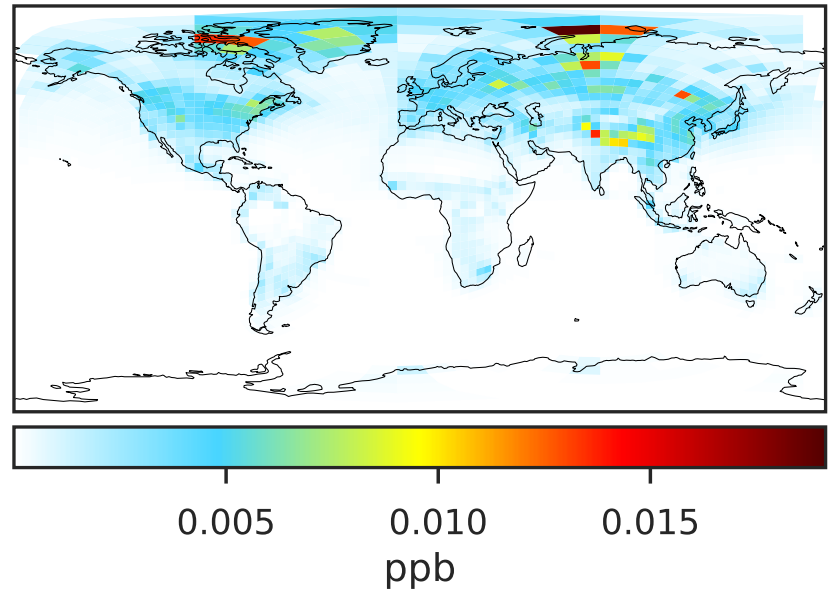
0.50 0.75 1.00 1.50 2.00
unitless

SpeciesConcVV_HNO4 (Apr2019)

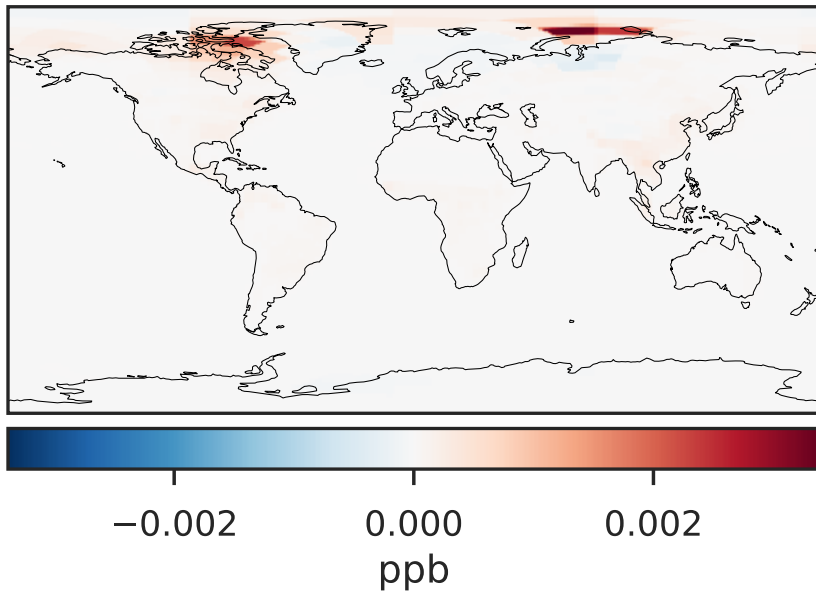
14.2.0-rc.2 (Ref)
c24



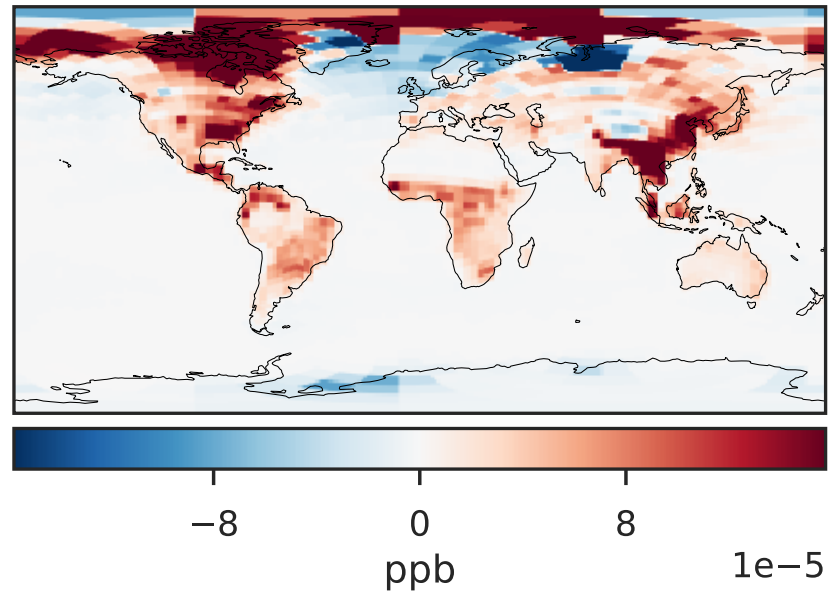
14.3.0-rc.0 (Dev)
c24



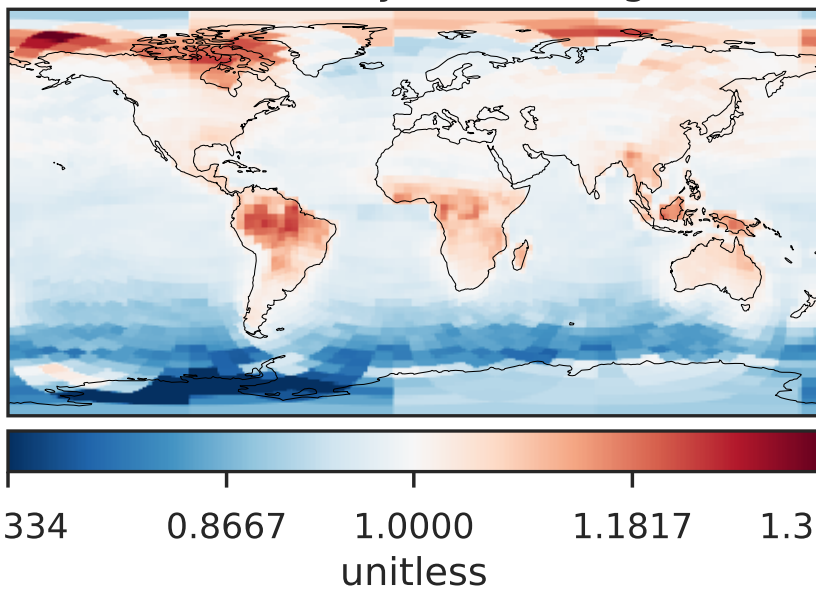
Difference (1x1.25)
Dev - Ref, Dynamic Range



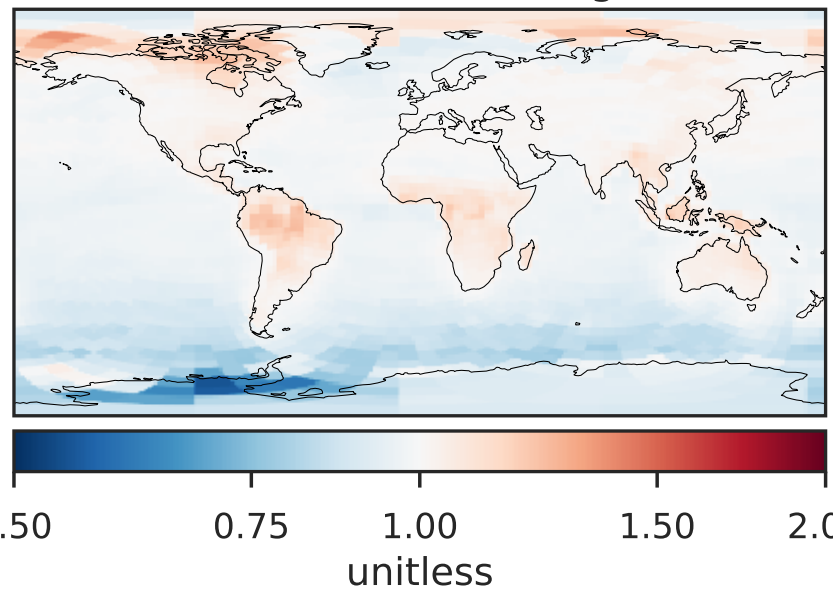
Difference (1x1.25)
Dev - Ref, Restricted Range [5%,95%]



Ratio (1x1.25)
Dev/Ref, Dynamic Range

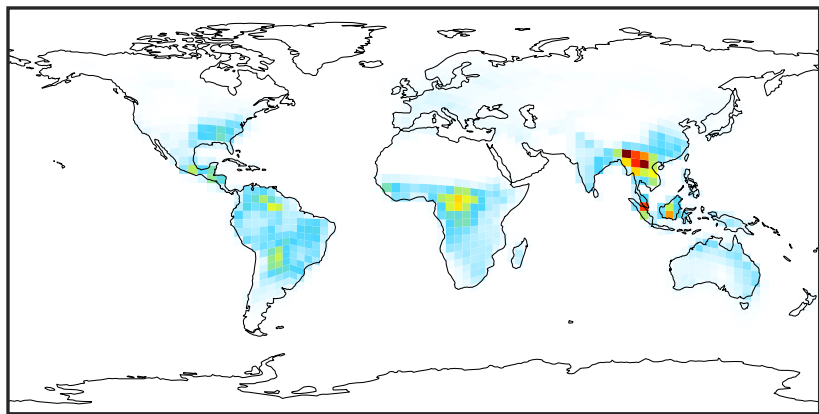


Ratio (1x1.25)
Dev/Ref, Fixed Range



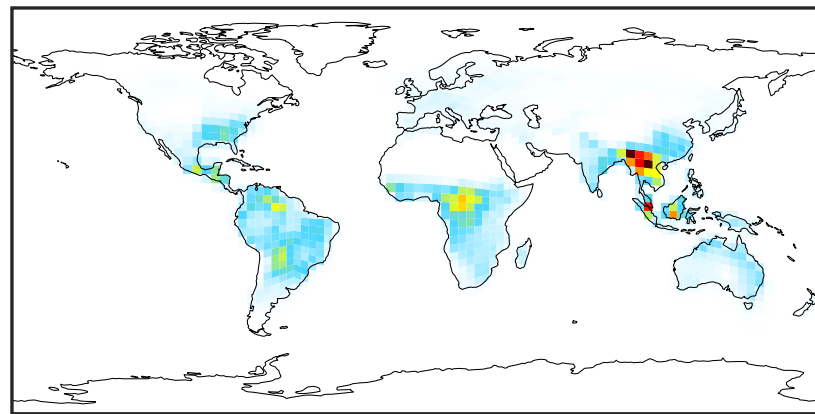
SpeciesConcVV_MPAN (Apr2019)

14.2.0-rc.2 (Ref)
c24



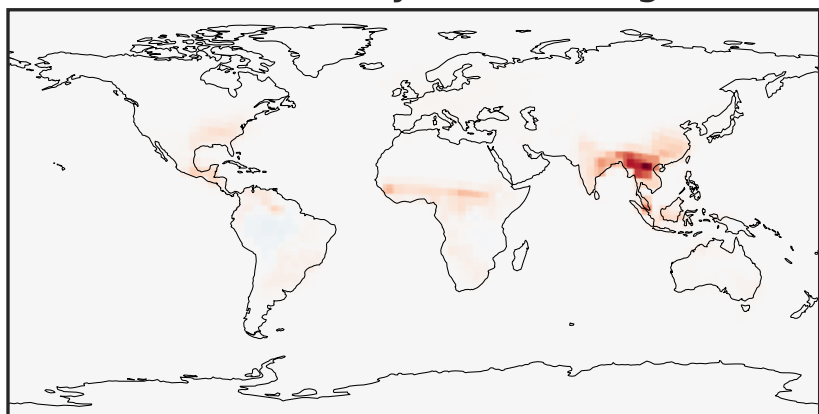
0.000 0.015 0.030 0.045
ppb

14.3.0-rc.0 (Dev)
c24



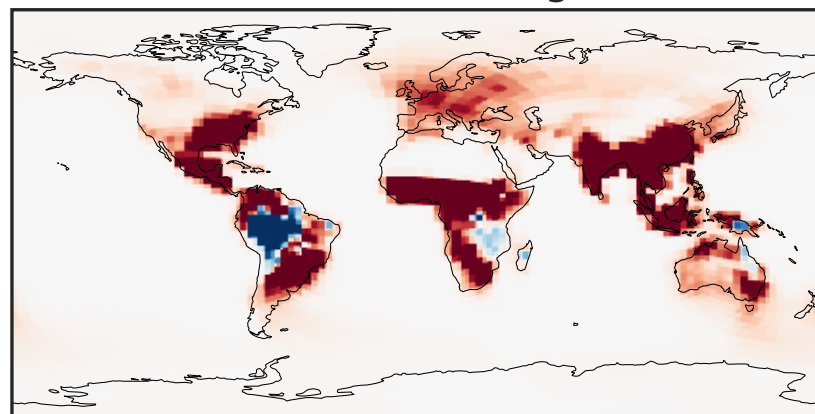
0.000 0.015 0.030 0.045
ppb

Difference (1x1.25)
Dev - Ref, Dynamic Range



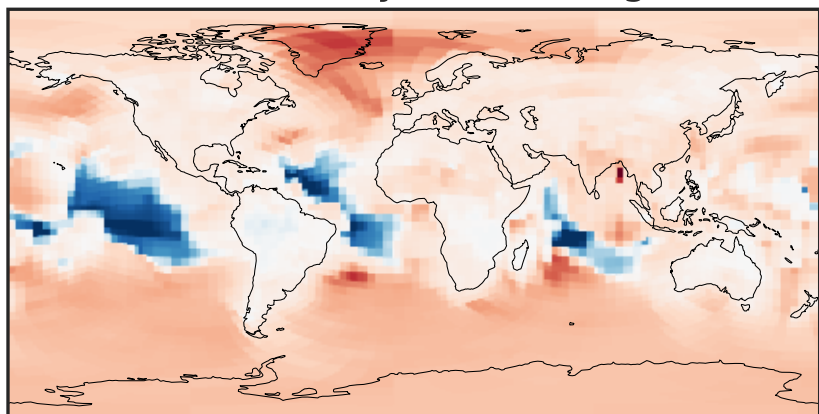
-0.0025 0.0000 0.0025
ppb

Difference (1x1.25)
Dev - Ref, Restricted Range [5%,95%]



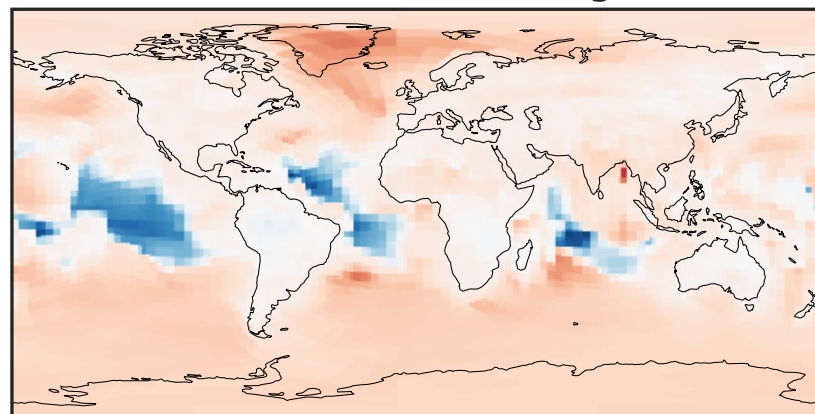
-8 0 8
ppb 1e-5

Ratio (1x1.25)
Dev/Ref, Dynamic Range



0.606 0.803 1.000 1.325 1.649
unitless

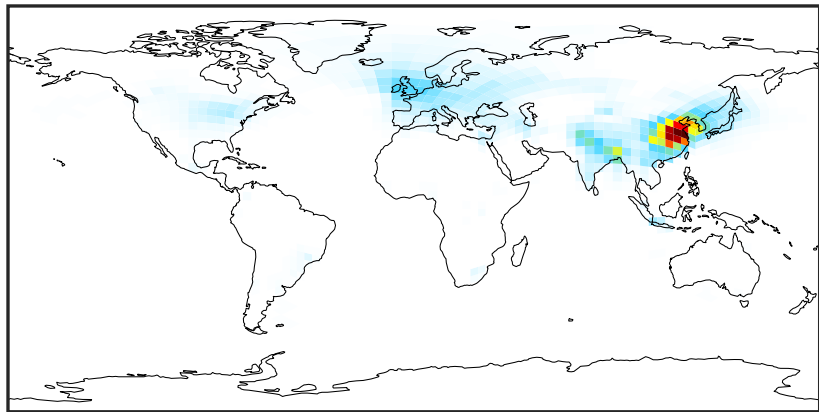
Ratio (1x1.25)
Dev/Ref, Fixed Range



0.50 0.75 1.00 1.50 2.00
unitless

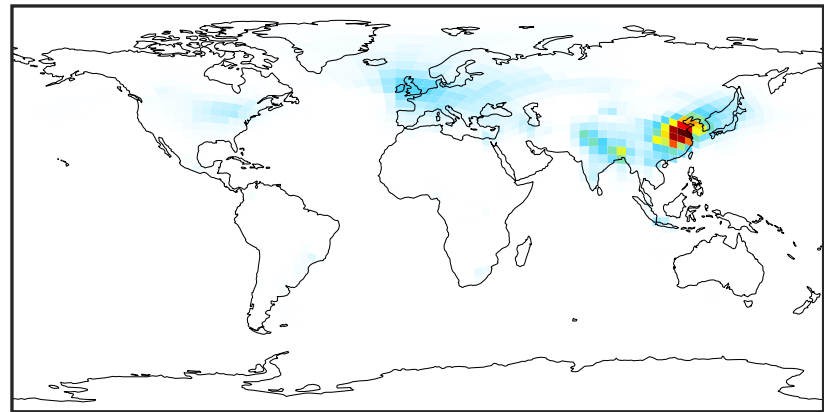
SpeciesConcVV_NIT (Apr2019)

14.2.0-rc.2 (Ref)
c24



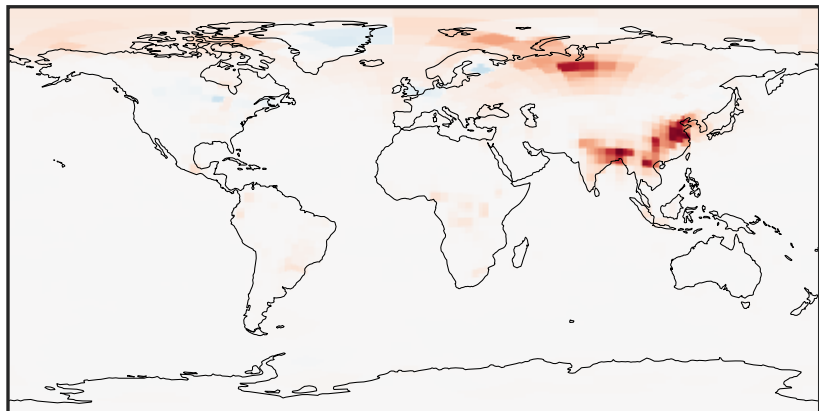
0.00 3.02 6.04 9.06 12.08
ppb

14.3.0-rc.0 (Dev)
c24



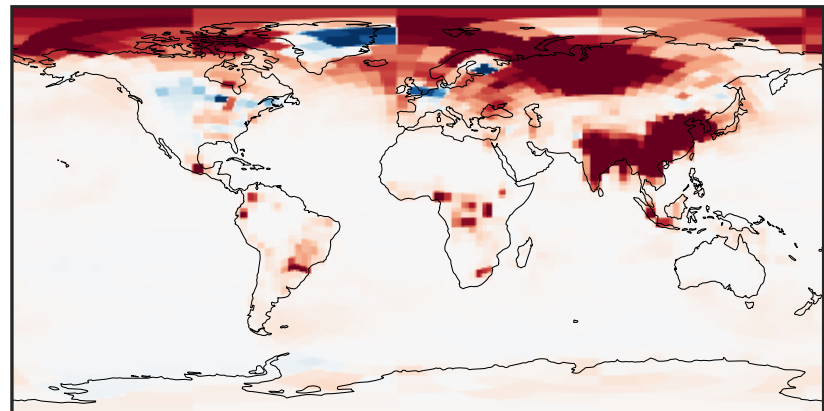
0.00 3.02 6.04 9.06 12.08
ppb

Difference (1x1.25)
Dev - Ref, Dynamic Range



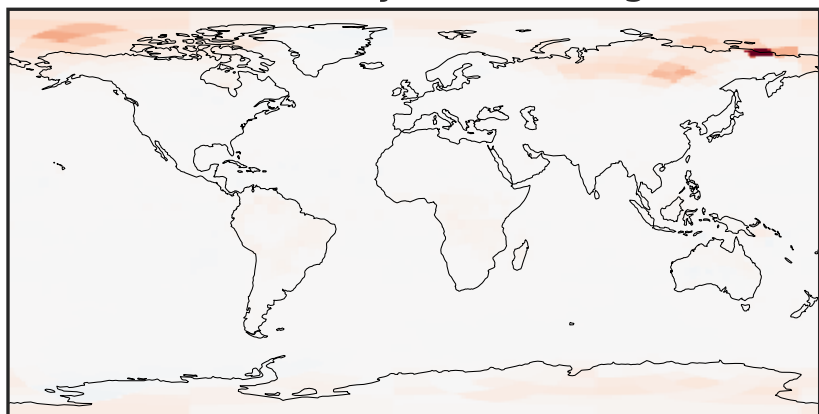
-0.0630 -0.0315 0.0000 0.0315 0.0630
ppb

Difference (1x1.25)
Dev - Ref, Restricted Range [5%,95%]



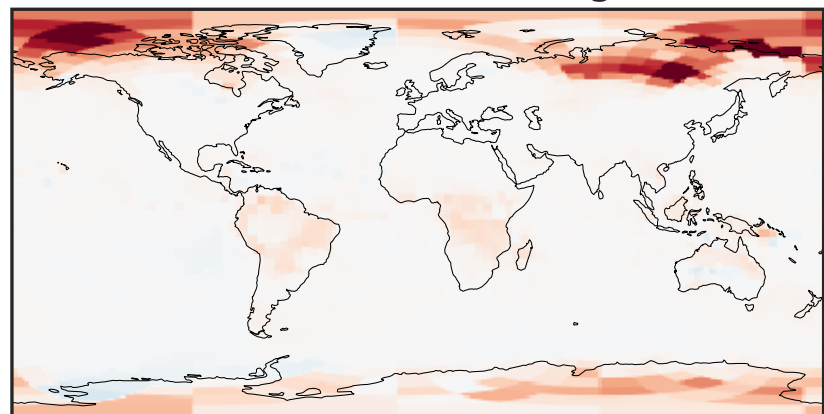
-0.004 0.000 0.004
ppb

Ratio (1x1.25)
Dev/Ref, Dynamic Range



1e-01 1 10
unitless

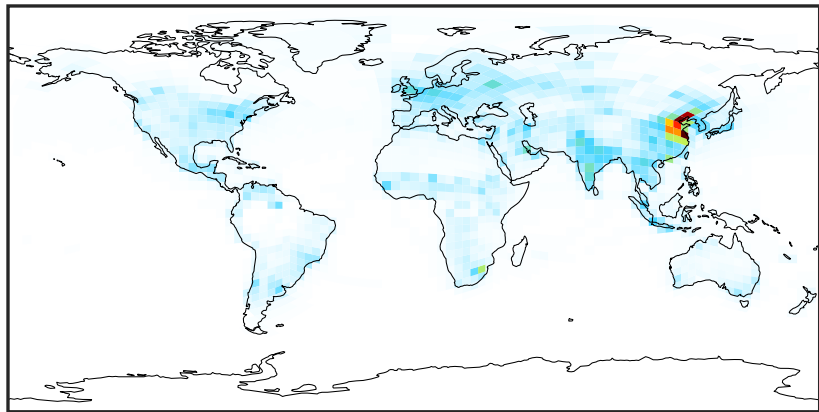
Ratio (1x1.25)
Dev/Ref, Fixed Range



0.50 0.75 1.00 1.50 2.00
unitless

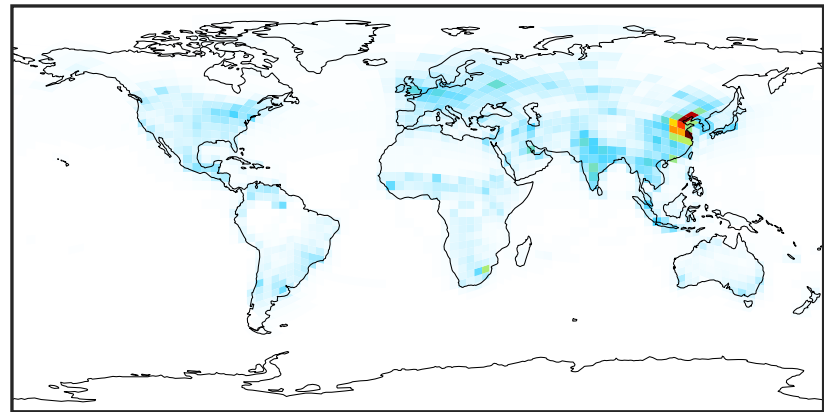
SpeciesConcVV_NO (Apr2019)

14.2.0-rc.2 (Ref)
c24



0.000 0.257 0.513 0.770 1.026
ppb

14.3.0-rc.0 (Dev)
c24



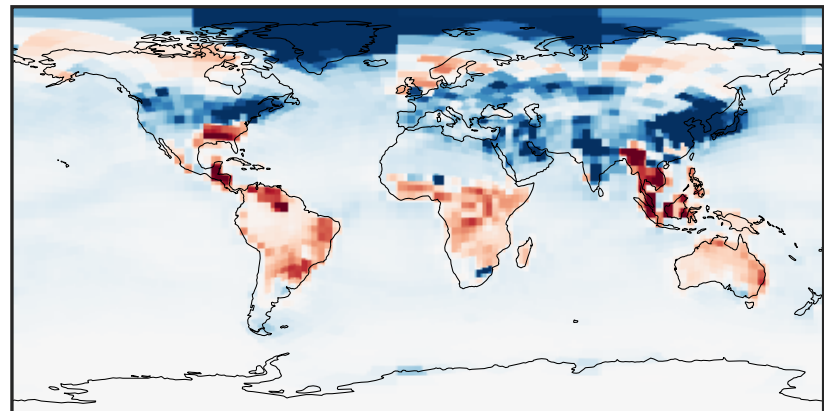
0.000 0.257 0.513 0.770 1.026
ppb

Difference (1x1.25)
Dev - Ref, Dynamic Range



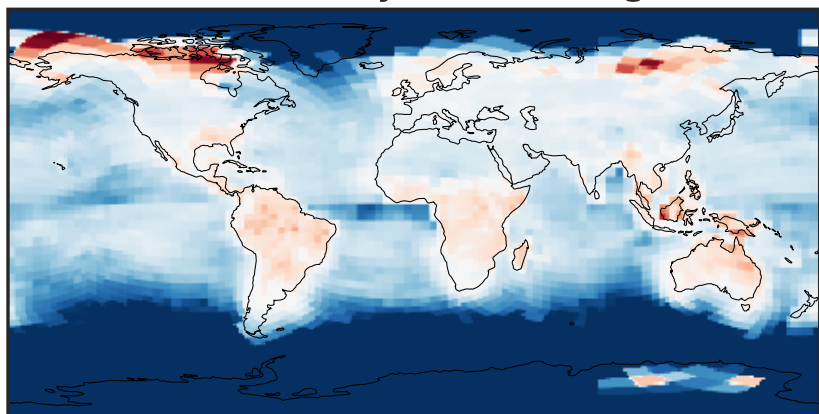
-0.015 0.000 0.015
ppb

Difference (1x1.25)
Dev - Ref, Restricted Range [5%,95%]



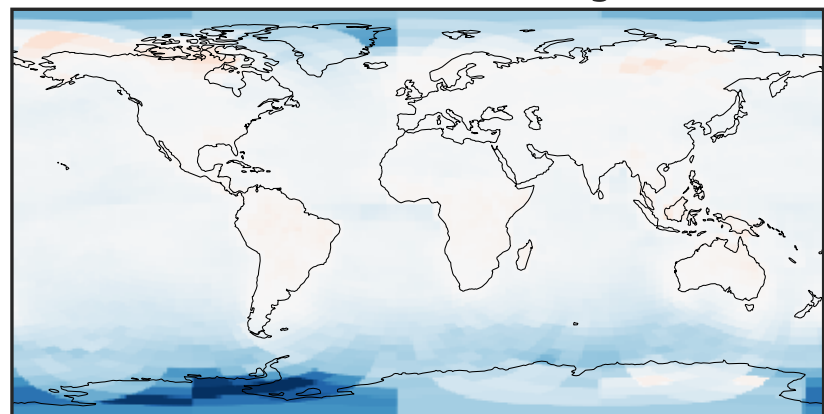
-0.0008 0.0000 0.0008
ppb

Ratio (1x1.25)
Dev/Ref, Dynamic Range



0.9034 0.9517 1.0000 1.0535 1.1069
unitless

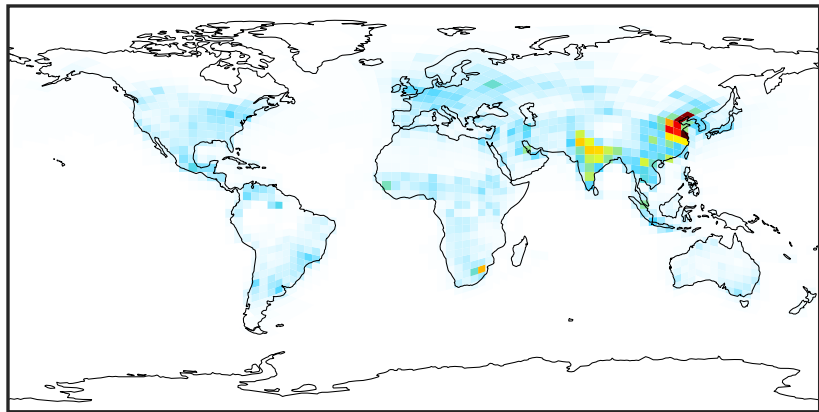
Ratio (1x1.25)
Dev/Ref, Fixed Range



0.50 0.75 1.00 1.50 2.00
unitless

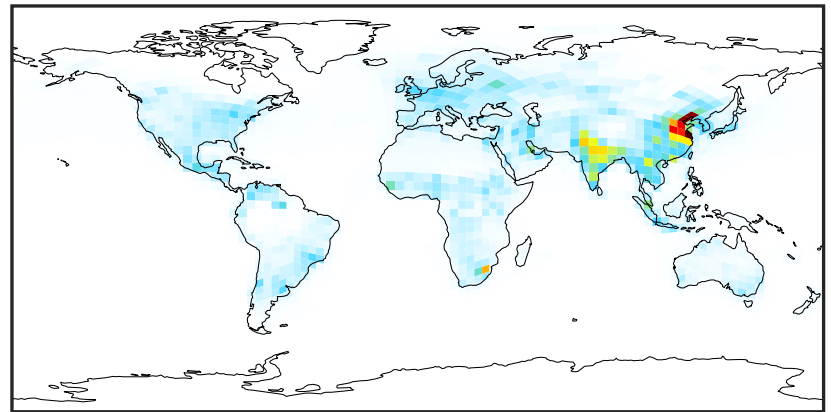
SpeciesConcVW_NO2 (Apr2019)

14.2.0-rc.2 (Ref)
c24



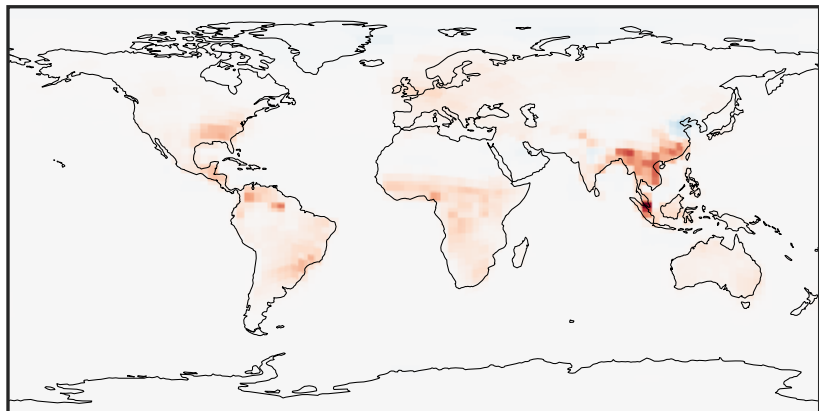
0.00 2.51 5.02 7.53 10.05
ppb

14.3.0-rc.0 (Dev)
c24



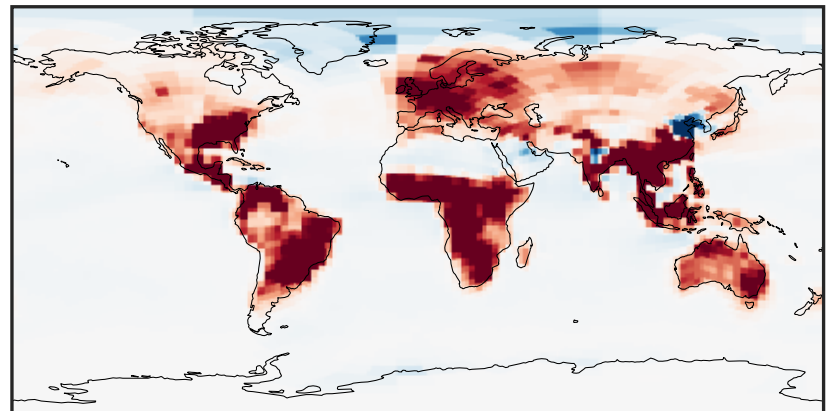
0.00 2.51 5.02 7.53 10.05
ppb

Difference (1x1.25)
Dev - Ref, Dynamic Range



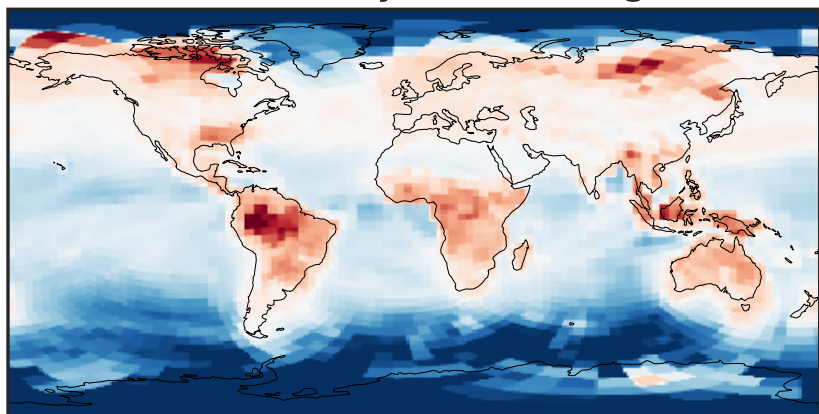
-0.1658 -0.0829 0.0000 0.0829 0.1658
ppb

Difference (1x1.25)
Dev - Ref, Restricted Range [5%,95%]



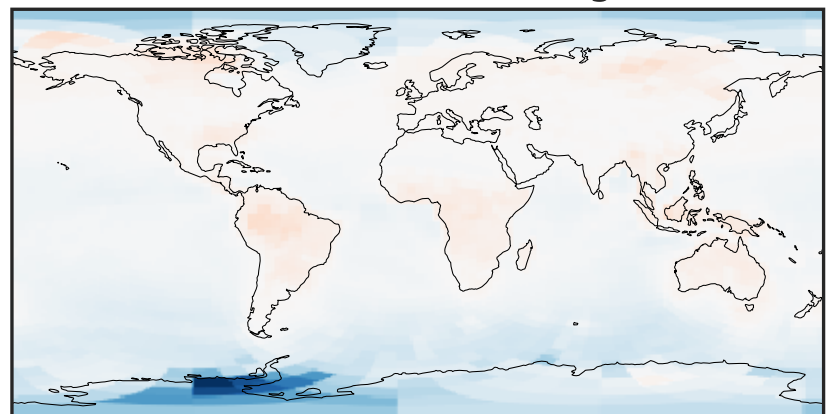
-0.008 0.000 0.008
ppb

Ratio (1x1.25)
Dev/Ref, Dynamic Range



0.8912 0.9456 1.0000 1.0610 1.1221
unitless

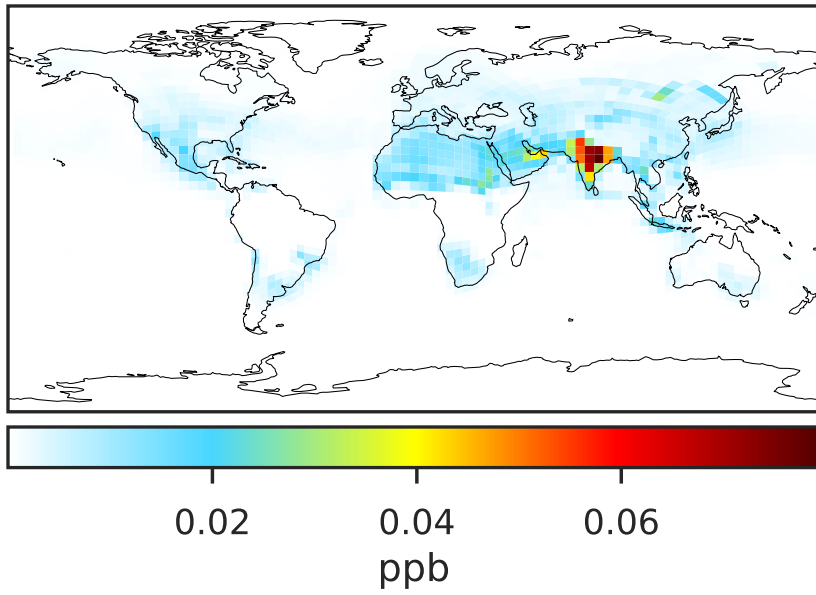
Ratio (1x1.25)
Dev/Ref, Fixed Range



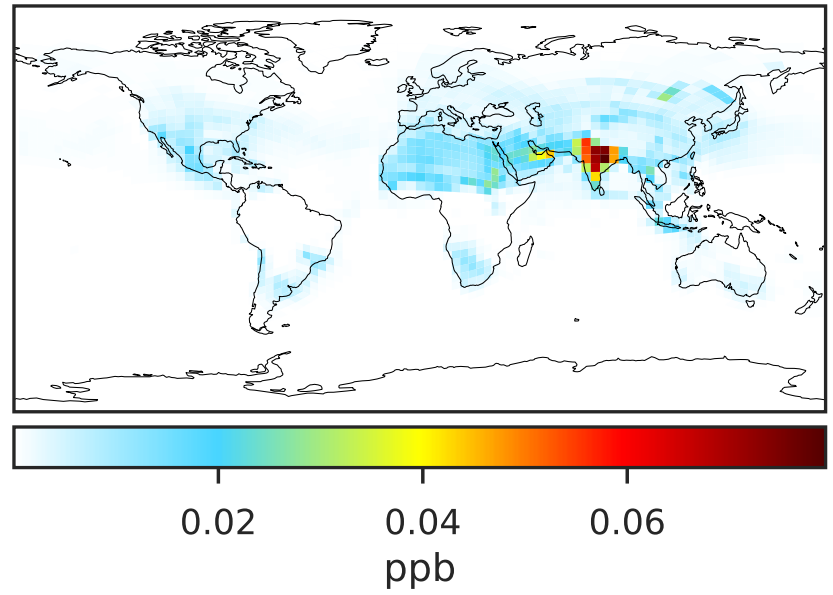
0.50 0.75 1.00 1.50 2.00
unitless

SpeciesConcVW_NO3 (Apr2019)

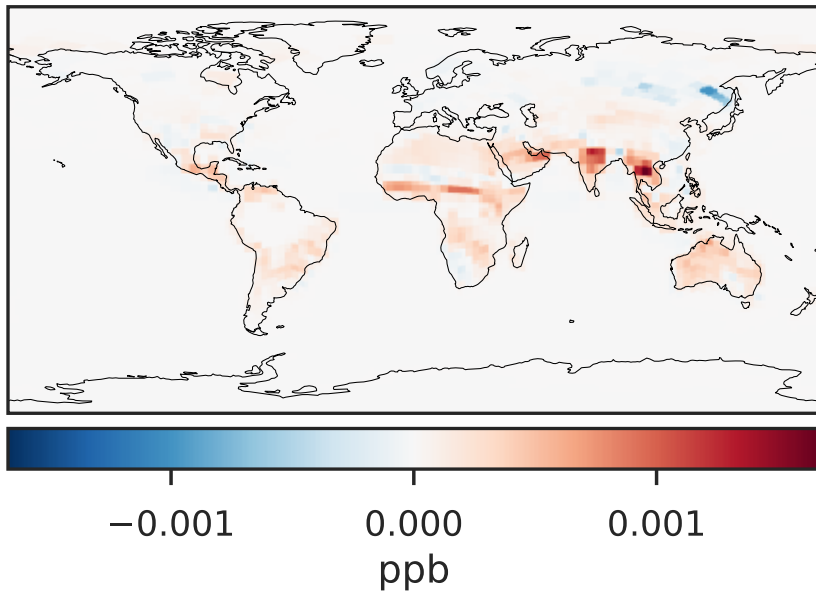
14.2.0-rc.2 (Ref)
c24



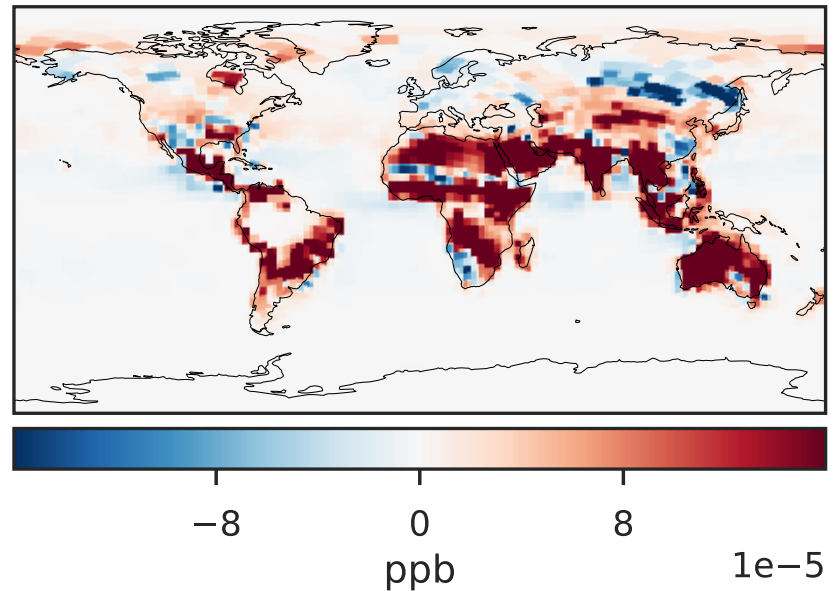
14.3.0-rc.0 (Dev)
c24



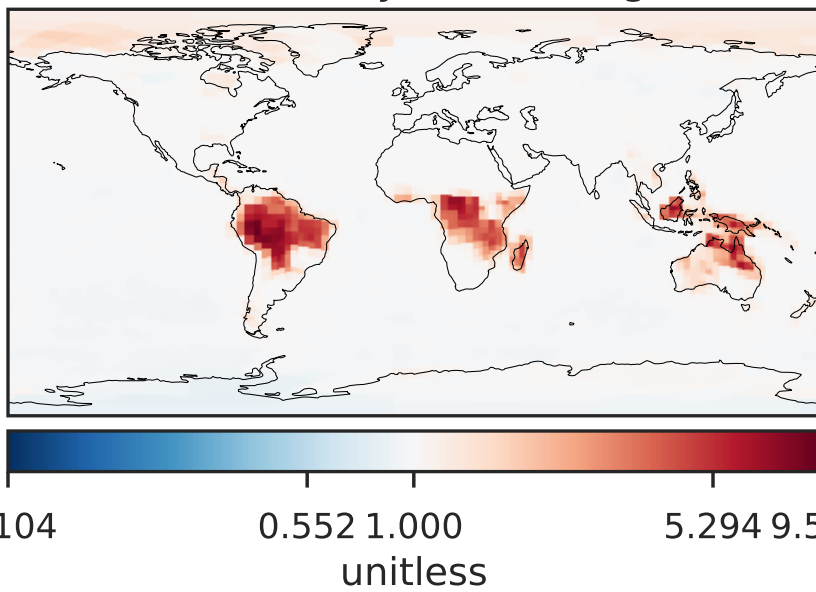
Difference (1x1.25)
Dev - Ref, Dynamic Range



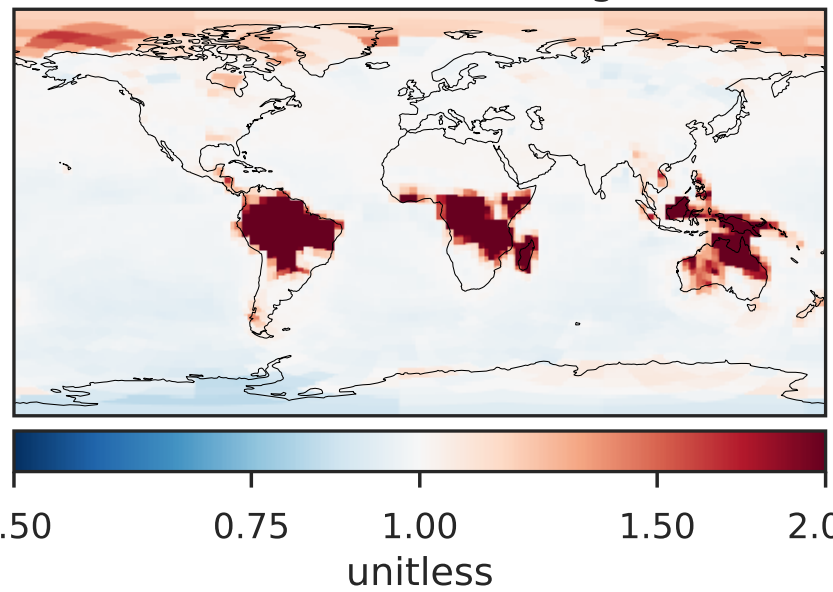
Difference (1x1.25)
Dev - Ref, Restricted Range [5%,95%]



Ratio (1x1.25)
Dev/Ref, Dynamic Range

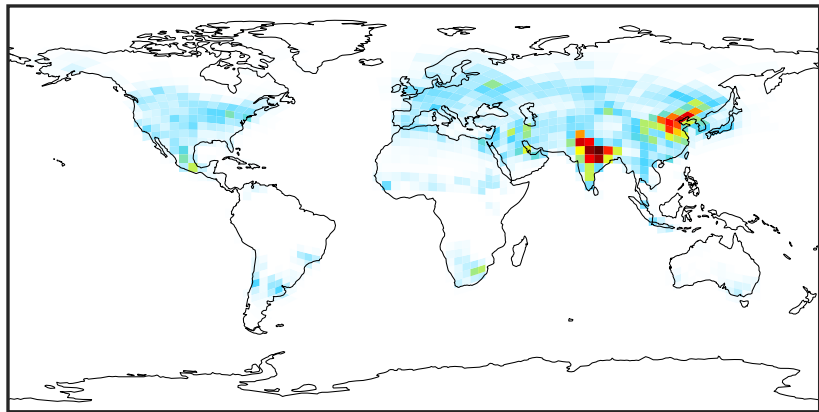


Ratio (1x1.25)
Dev/Ref, Fixed Range



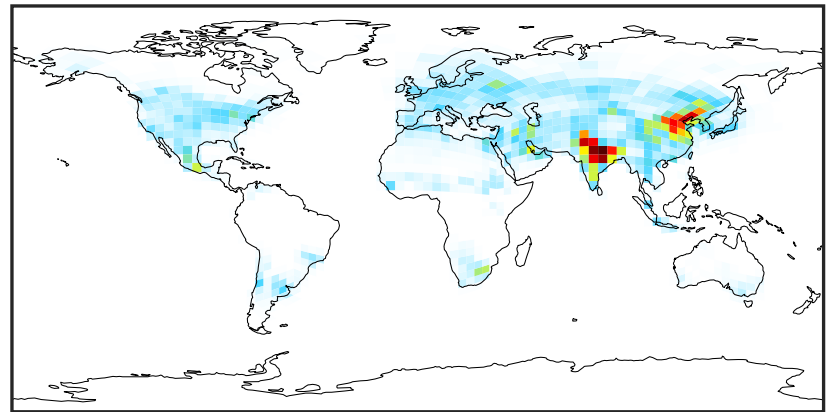
SpeciesConcVV_N2O5 (Apr2019)

14.2.0-rc.2 (Ref)
c24



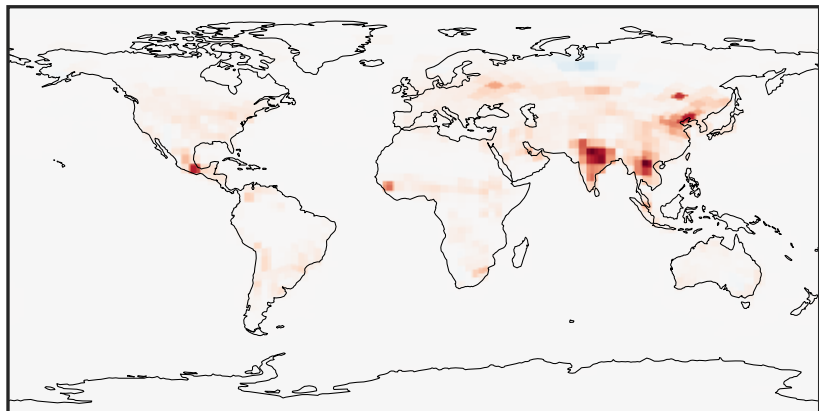
0.0000 0.0666 0.1331 0.1997 0.2663
ppb

14.3.0-rc.0 (Dev)
c24



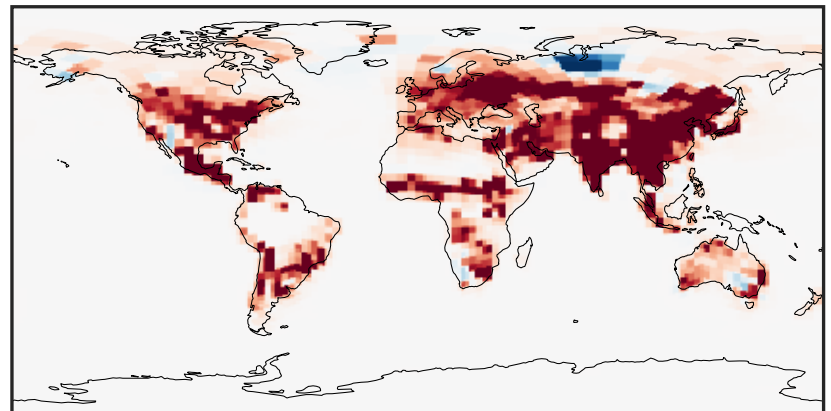
0.0000 0.0666 0.1331 0.1997 0.2663
ppb

Difference (1x1.25)
Dev - Ref, Dynamic Range



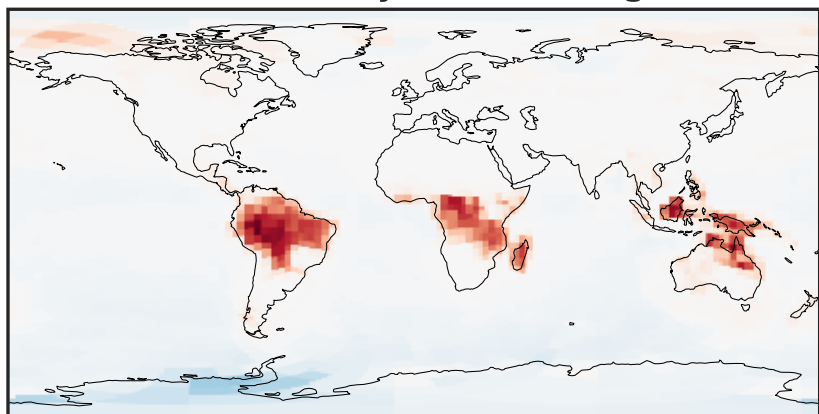
-0.003 0.000 0.003
ppb

Difference (1x1.25)
Dev - Ref, Restricted Range [5%,95%]



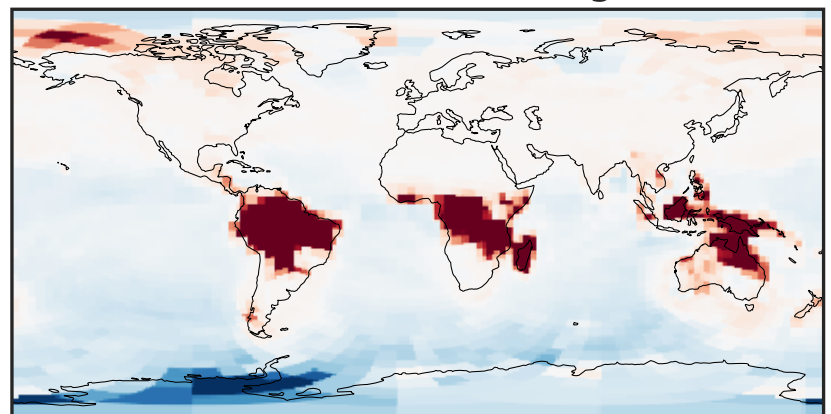
-0.00025 0.00000 0.00025
ppb

Ratio (1x1.25)
Dev/Ref, Dynamic Range



1e-01 1 10
unitless

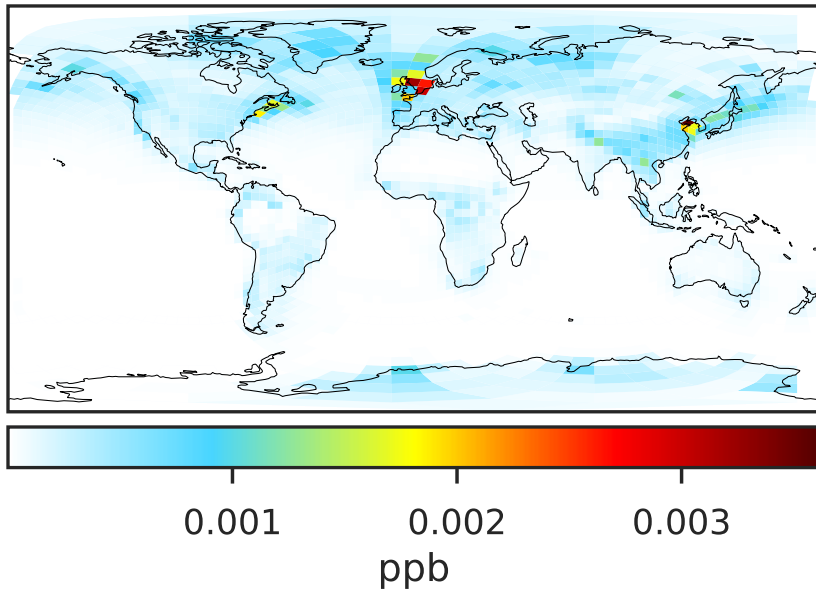
Ratio (1x1.25)
Dev/Ref, Fixed Range



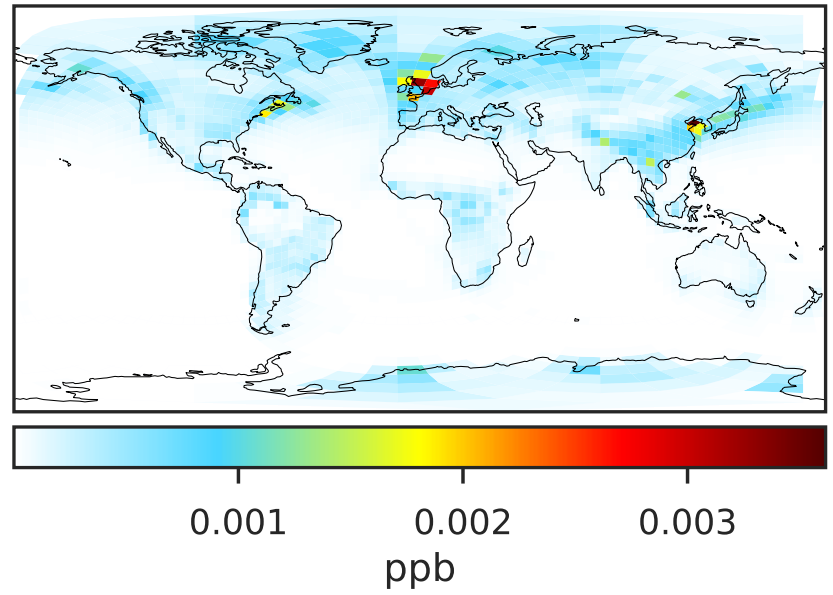
0.50 0.75 1.00 1.50 2.00
unitless

SpeciesConcVW_MPN (Apr2019)

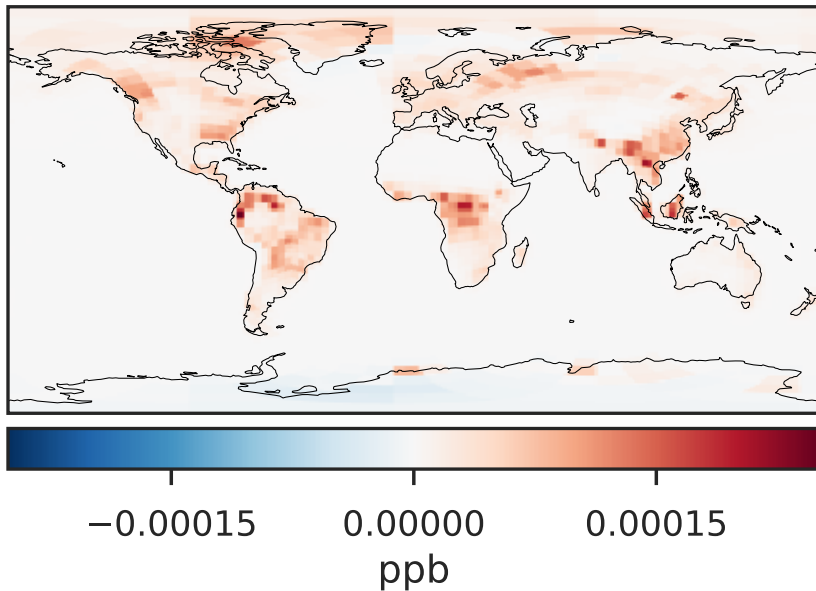
14.2.0-rc.2 (Ref)
c24



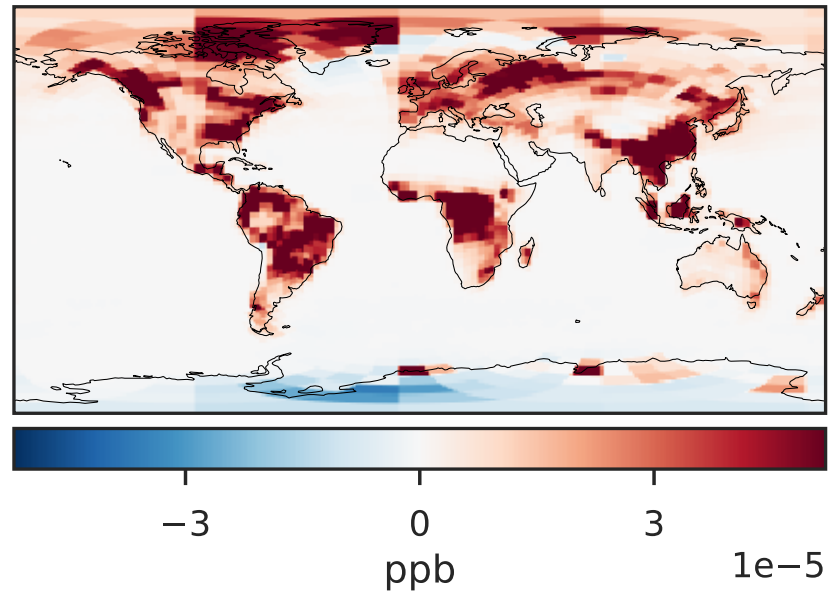
14.3.0-rc.0 (Dev)
c24



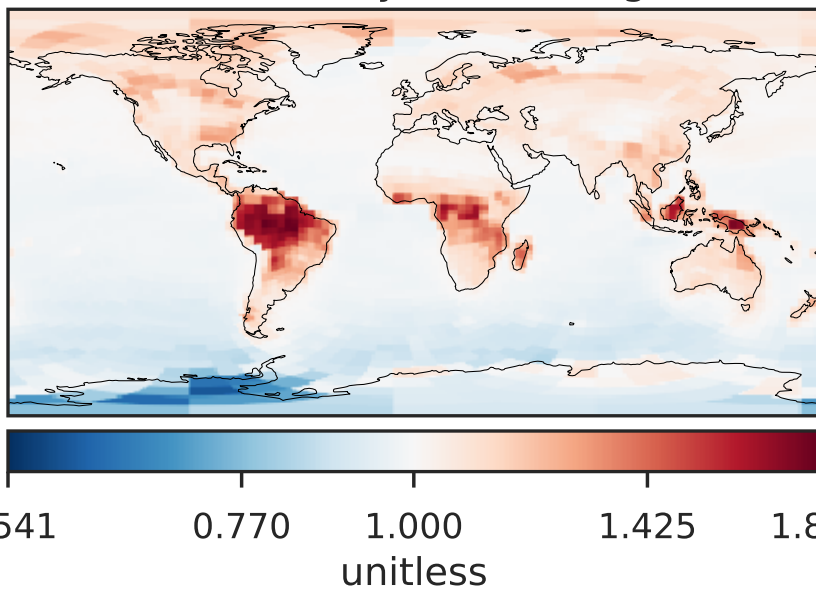
Difference (1x1.25)
Dev - Ref, Dynamic Range



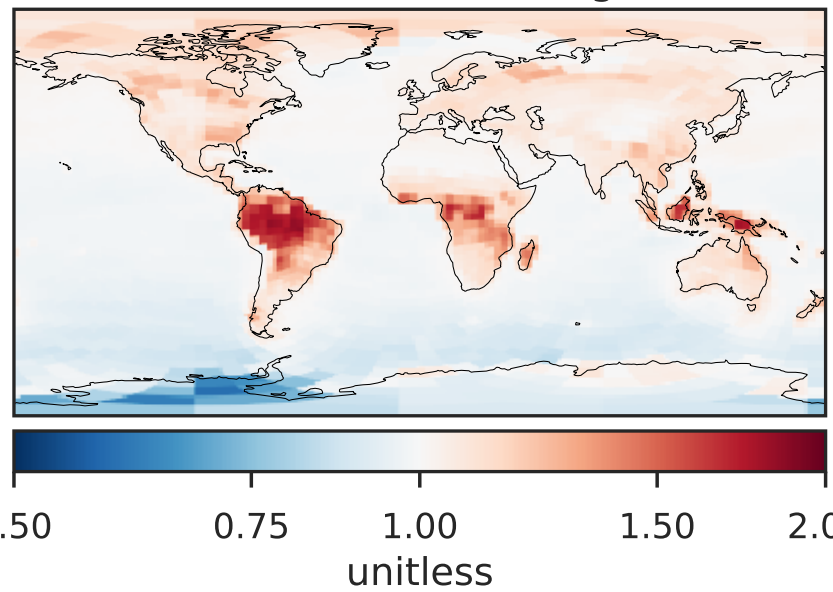
Difference (1x1.25)
Dev - Ref, Restricted Range [5%,95%]



Ratio (1x1.25)
Dev/Ref, Dynamic Range

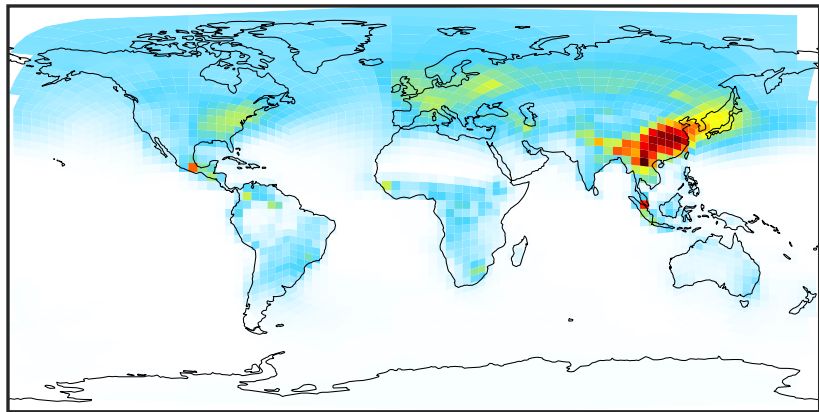


Ratio (1x1.25)
Dev/Ref, Fixed Range



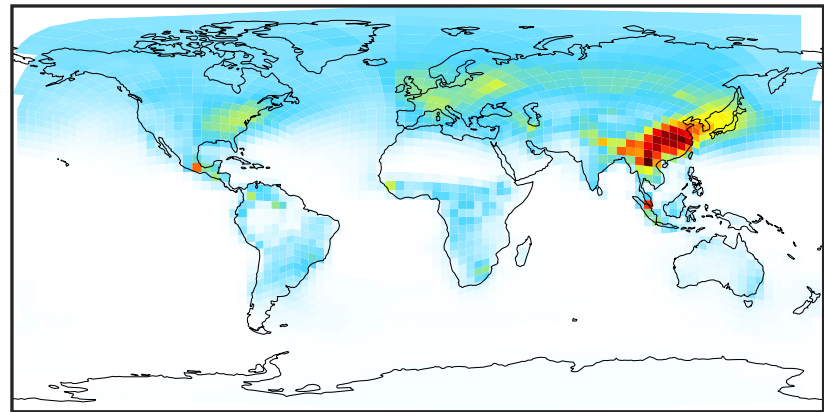
SpeciesConcVV_PAN (Apr2019)

14.2.0-rc.2 (Ref)
c24



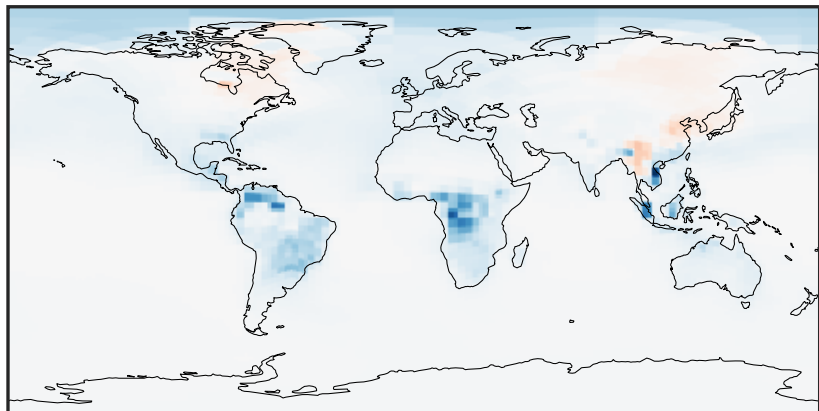
0.000 0.272 0.543 0.815 1.086
ppb

14.3.0-rc.0 (Dev)
c24



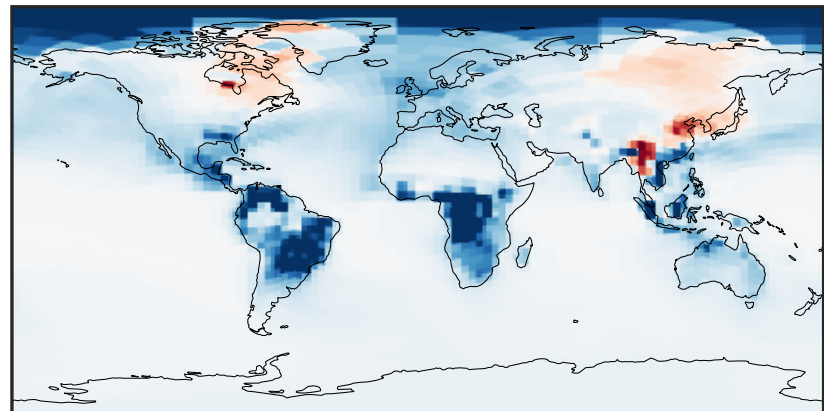
0.000 0.272 0.543 0.815 1.086
ppb

Difference (1x1.25)
Dev - Ref, Dynamic Range



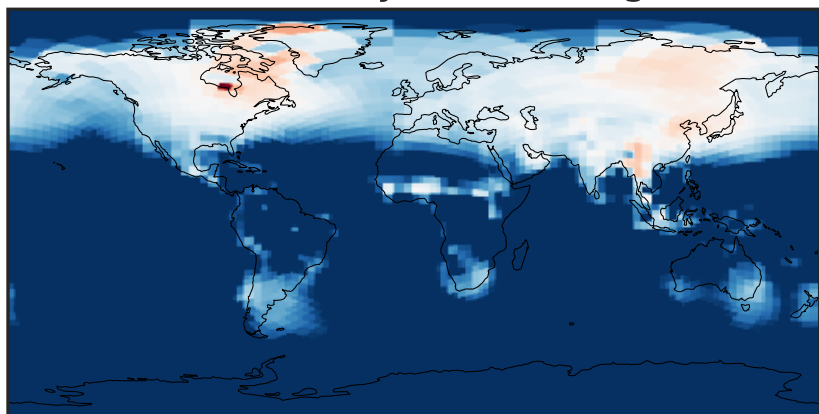
-0.025 0.000 0.025
ppb

Difference (1x1.25)
Dev - Ref, Restricted Range [5%,95%]



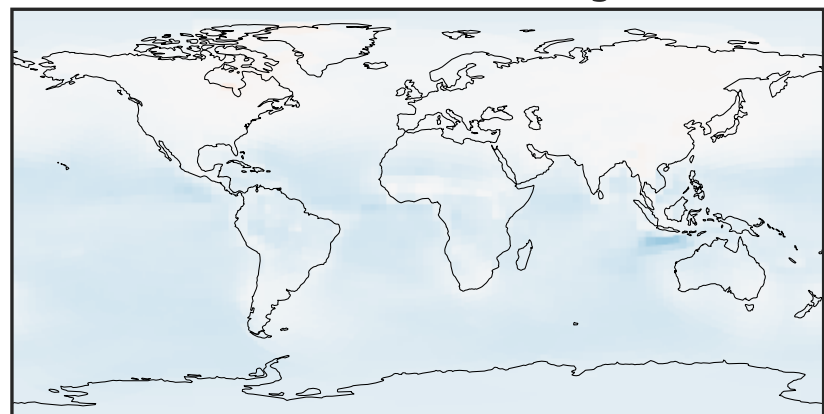
-0.006 0.000 0.006
ppb

Ratio (1x1.25)
Dev/Ref, Dynamic Range



0.9422 0.9711 1.0000 1.0306 1.0613
unitless

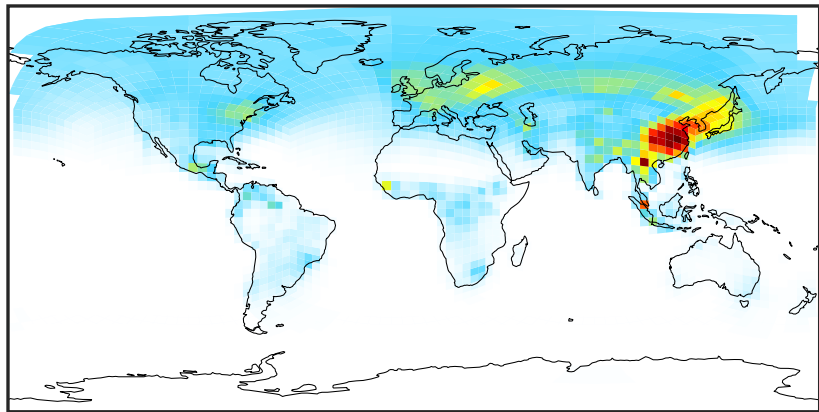
Ratio (1x1.25)
Dev/Ref, Fixed Range



0.50 0.75 1.00 1.50 2.00
unitless

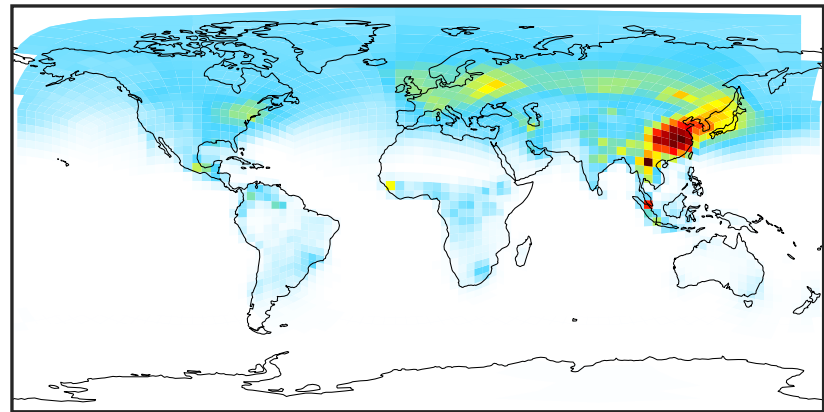
SpeciesConcVV_PPN (Apr2019)

14.2.0-rc.2 (Ref)
c24



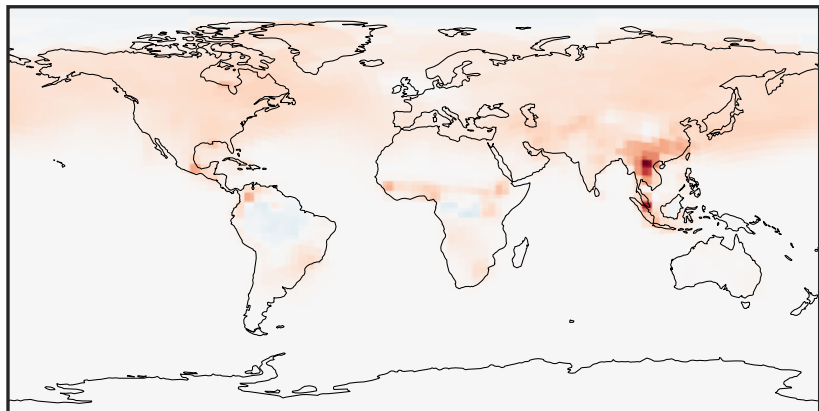
0.0000 0.0623 0.1245 0.1868 0.2491
ppb

14.3.0-rc.0 (Dev)
c24



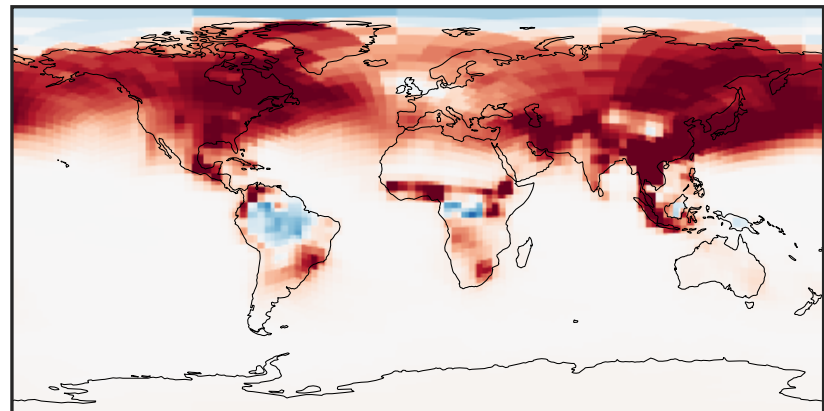
0.0000 0.0623 0.1245 0.1868 0.2491
ppb

Difference (1x1.25)
Dev - Ref, Dynamic Range



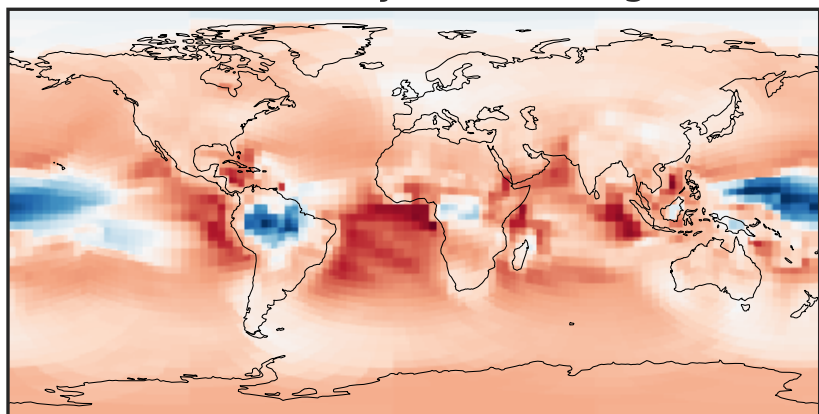
-0.01 0.00 0.01
ppb

Difference (1x1.25)
Dev - Ref, Restricted Range [5%,95%]



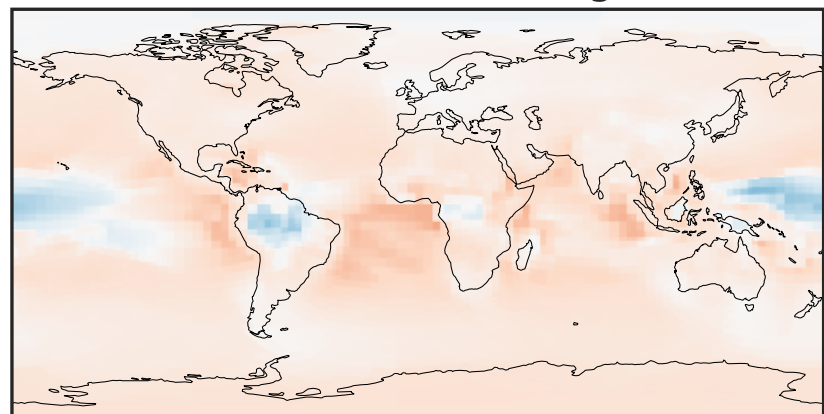
-0.002 0.000 0.002
ppb

Ratio (1x1.25)
Dev/Ref, Dynamic Range



0.7694 0.8847 1.0000 1.1499 1.2997
unitless

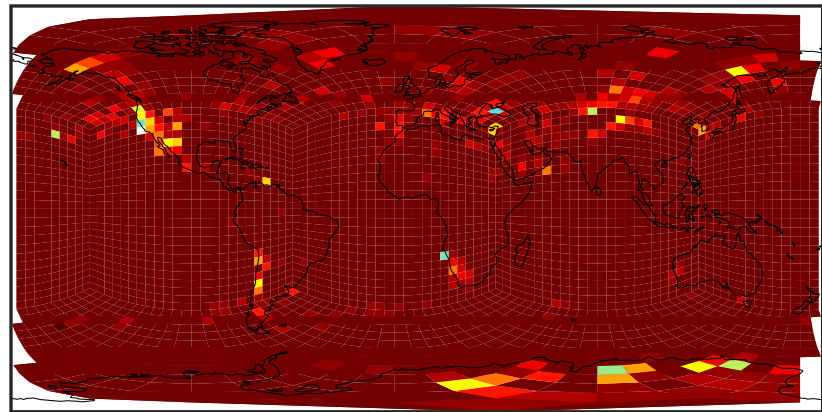
Ratio (1x1.25)
Dev/Ref, Fixed Range



0.50 0.75 1.00 1.50 2.00
unitless

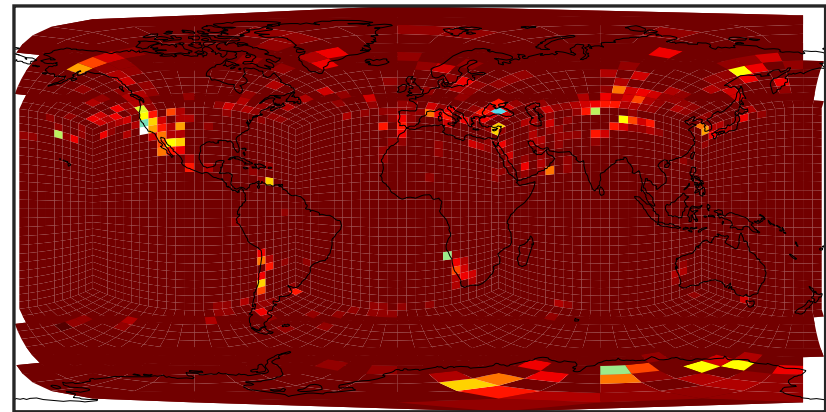
SpeciesConcVW_N2O (Apr2019)

14.2.0-rc.2 (Ref)
c24



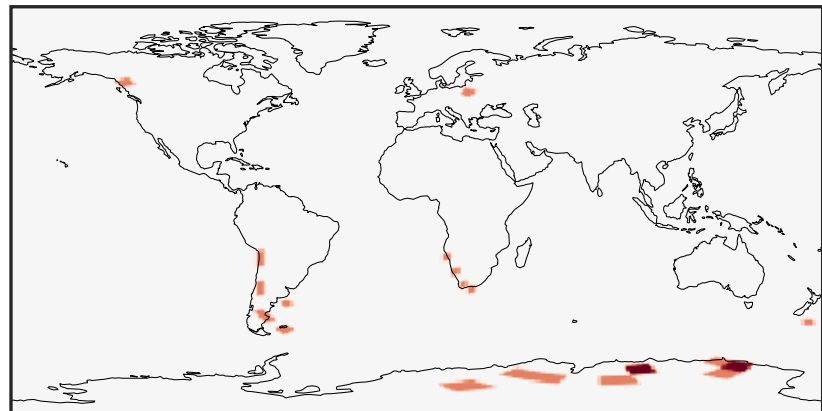
0.0028 0.0030 0.0032 0.0034
ppb +3.3015e2

14.3.0-rc.0 (Dev)
c24



0.0028 0.0030 0.0032 0.0034
ppb +3.3015e2

Difference (1x1.25)
Dev - Ref, Dynamic Range



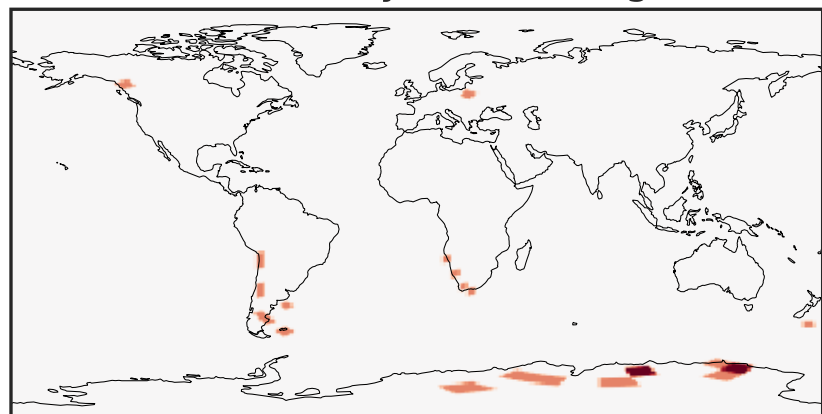
-4 0 4
ppb 1e-5

Difference (1x1.25)
Dev - Ref, Restricted Range [5%,95%]



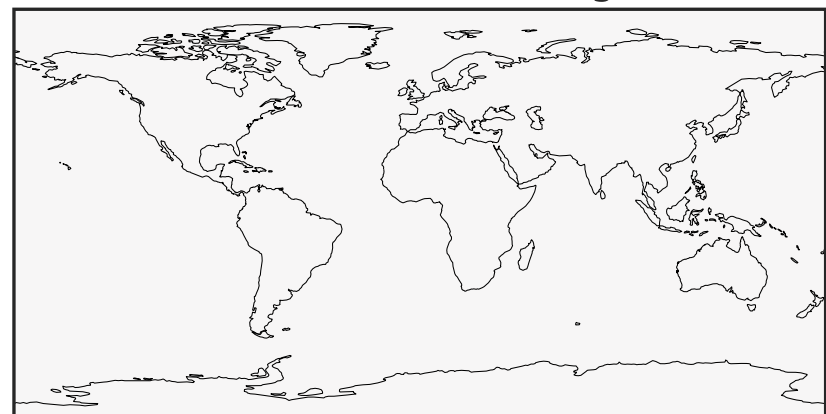
-1.0 -0.5 0.0 0.5 1.0
ppb

Ratio (1x1.25)
Dev/Ref, Dynamic Range



0.9999998151 1.0000000000 1.00000018490.50
unitless

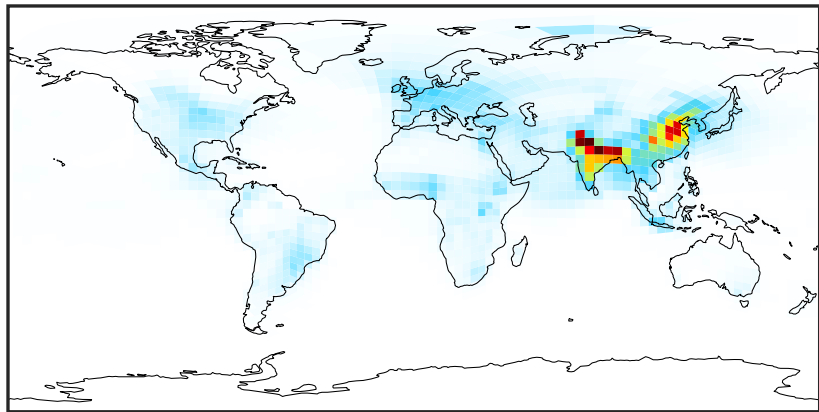
Ratio (1x1.25)
Dev/Ref, Fixed Range



0.75 1.00 1.50 2.00
unitless

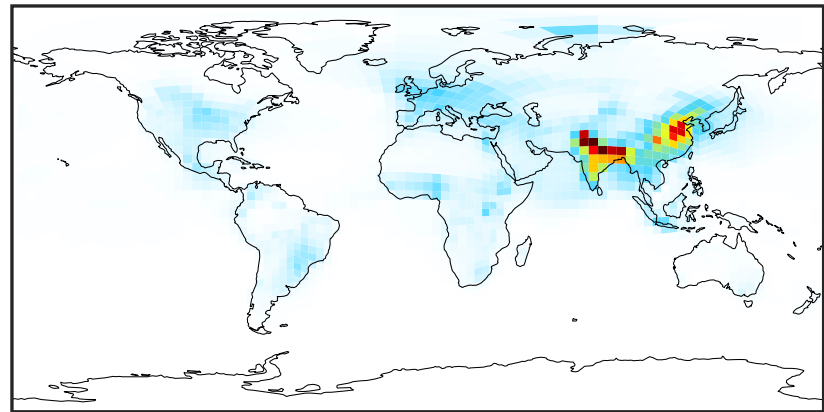
SpeciesConcVV_NHx (Apr2019)

14.2.0-rc.2 (Ref)
c24



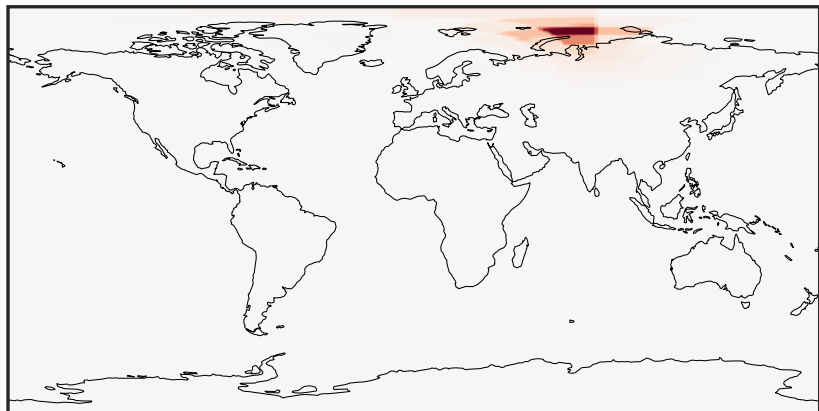
0.00 11.43 22.86 34.30 45.73
ppb

14.3.0-rc.0 (Dev)
c24



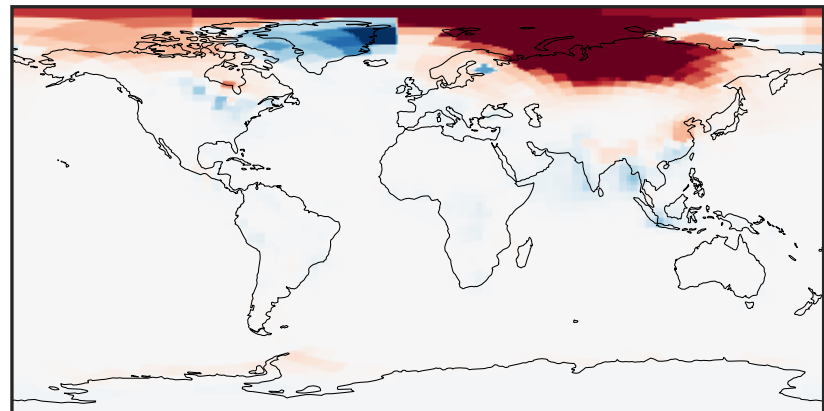
0.00 11.43 22.86 34.30 45.73
ppb

Difference (1x1.25)
Dev - Ref, Dynamic Range



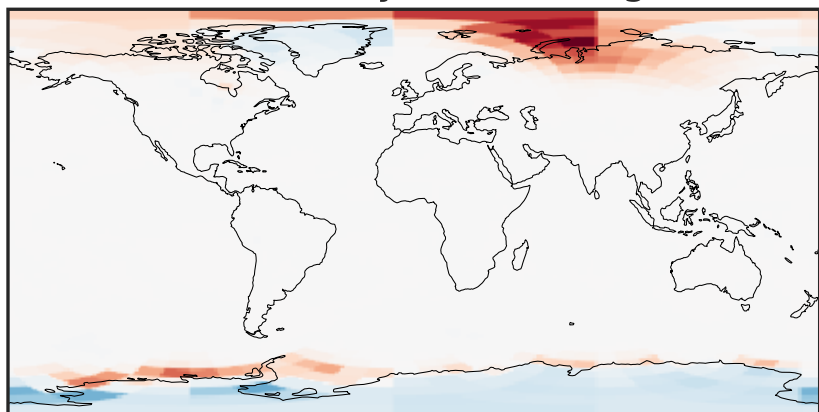
-3.391 -1.696 0.000 1.696 3.391
ppb

Difference (1x1.25)
Dev - Ref, Restricted Range [5%,95%]



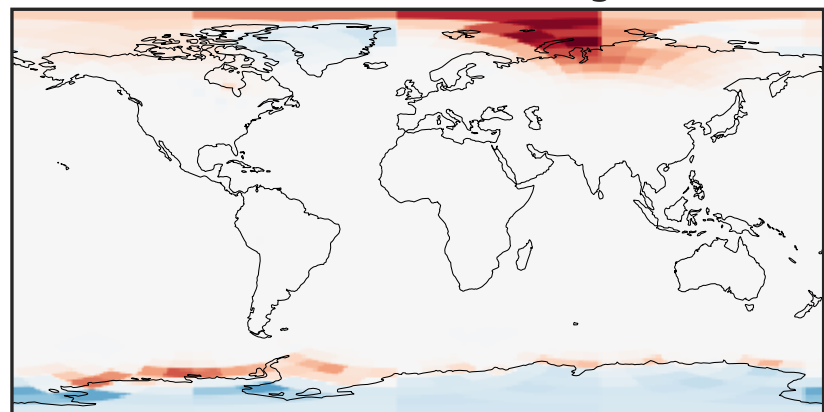
-0.0523 -0.0261 0.0000 0.0261 0.0523
ppb

Ratio (1x1.25)
Dev/Ref, Dynamic Range



0.474 0.737 1.000 1.556 2.111
unitless

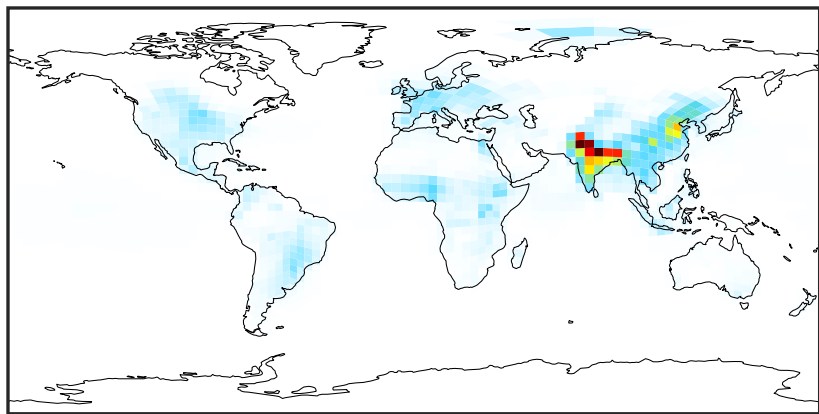
Ratio (1x1.25)
Dev/Ref, Fixed Range



0.50 0.75 1.00 1.50 2.00
unitless

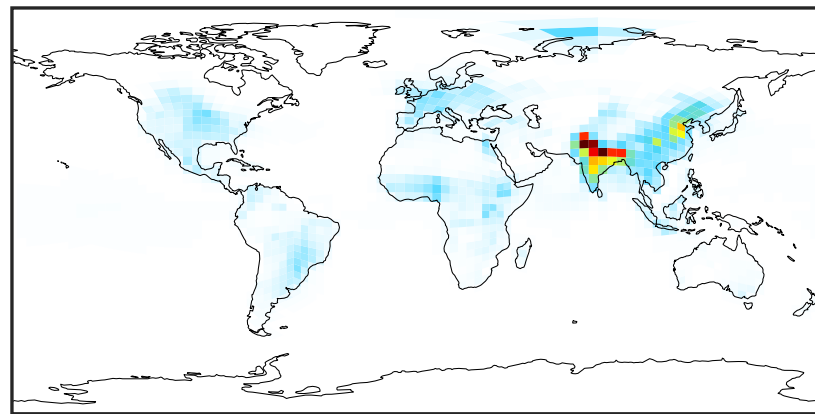
SpeciesConcVV_NH3 (Apr2019)

14.2.0-rc.2 (Ref)
c24



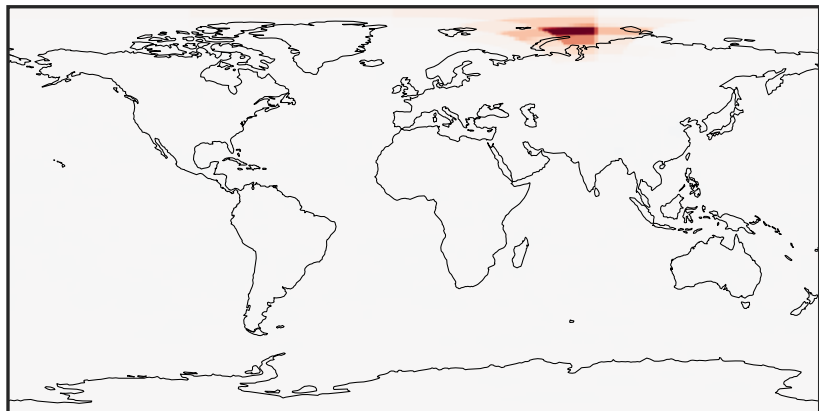
0.00 9.25 18.50 27.75 37.00
ppb

14.3.0-rc.0 (Dev)
c24



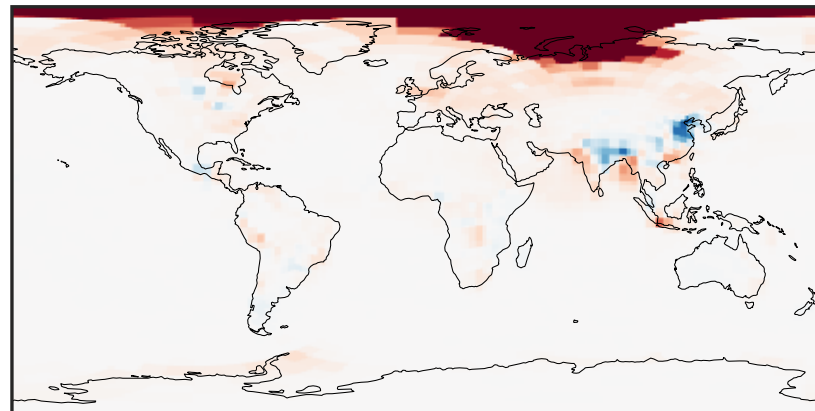
0.00 9.25 18.50 27.75 37.00
ppb

Difference (1x1.25)
Dev - Ref, Dynamic Range



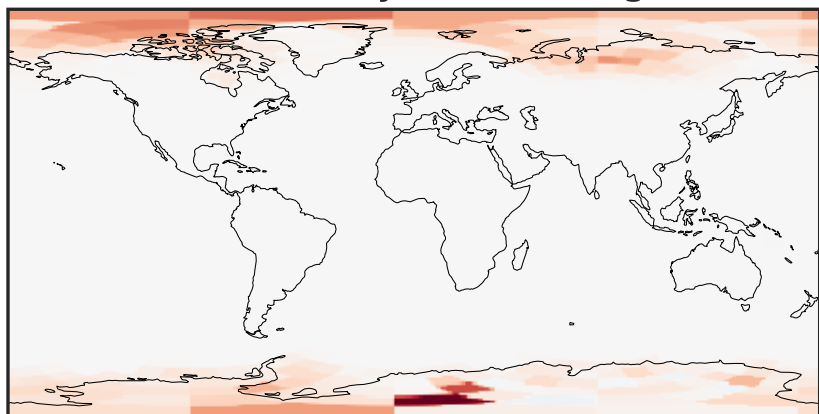
-3.406 -1.703 0.000 1.703 3.406
ppb

Difference (1x1.25)
Dev - Ref, Restricted Range [5%,95%]



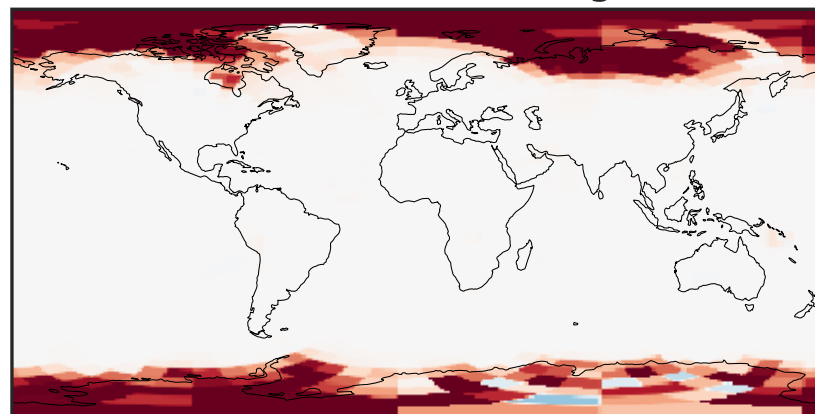
-0.02 0.00 0.02
ppb

Ratio (1x1.25)
Dev/Ref, Dynamic Range



1e-02 1e-01 1 10 100
unitless

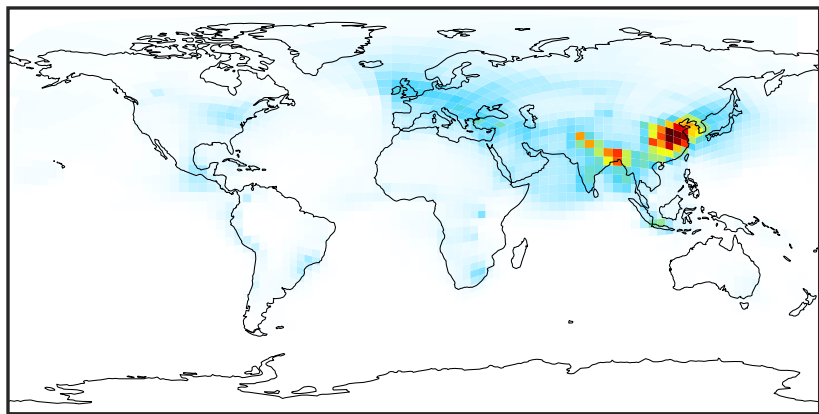
Ratio (1x1.25)
Dev/Ref, Fixed Range



0.50 0.75 1.00 1.50 2.00
unitless

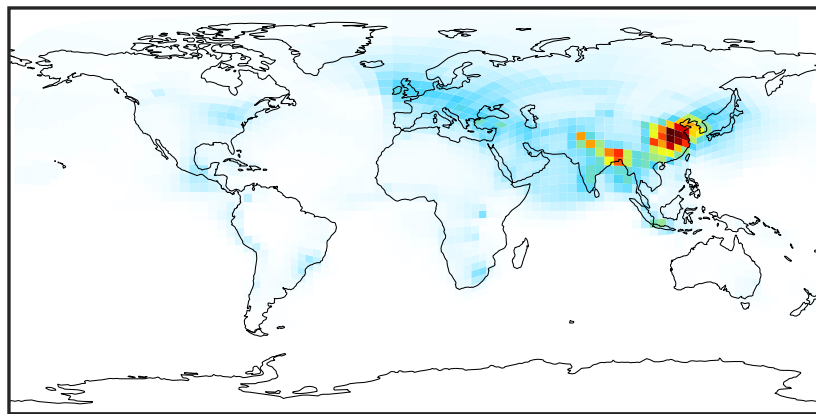
SpeciesConcVV_NH4 (Apr2019)

14.2.0-rc.2 (Ref)
c24



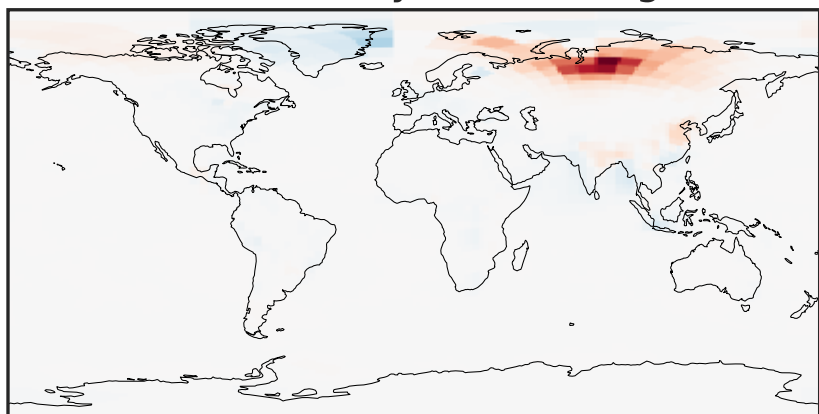
0.00 4.97 9.94 14.91 19.88
ppb

14.3.0-rc.0 (Dev)
c24



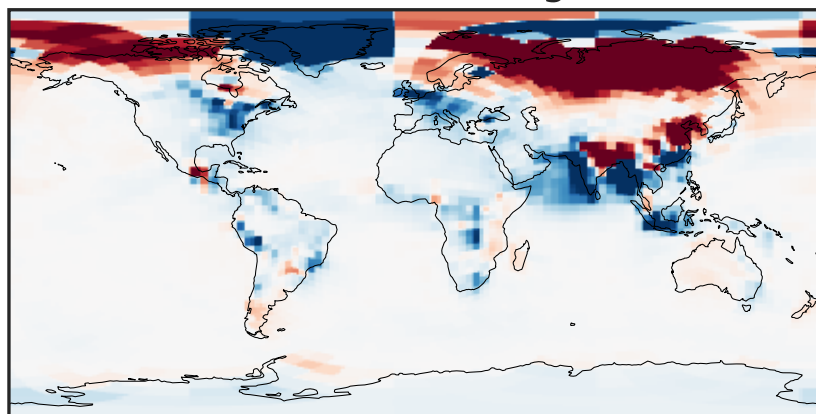
0.00 4.97 9.94 14.91 19.88
ppb

Difference (1x1.25)
Dev - Ref, Dynamic Range



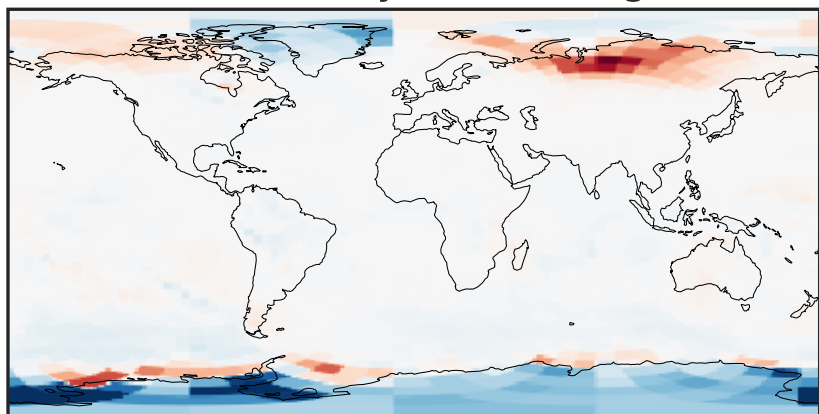
-0.2483 -0.1242 0.0000 0.1242 0.2483
ppb

Difference (1x1.25)
Dev - Ref, Restricted Range [5%,95%]



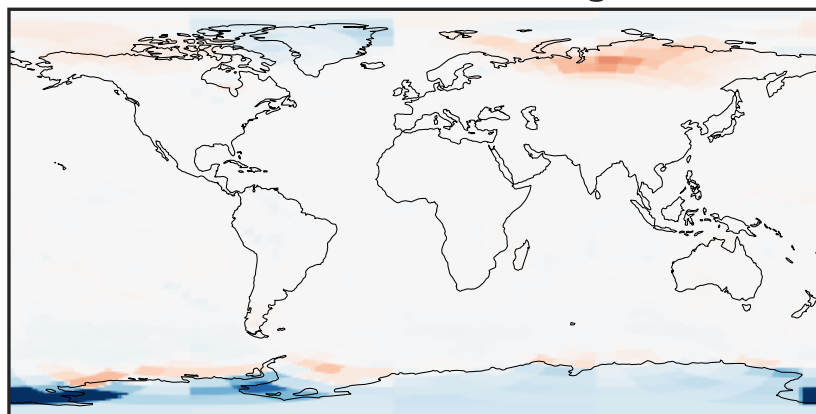
-0.006 0.000 0.006
ppb

Ratio (1x1.25)
Dev/Ref, Dynamic Range



0.7227 0.8613 1.0000 1.1919 1.3837
unitless

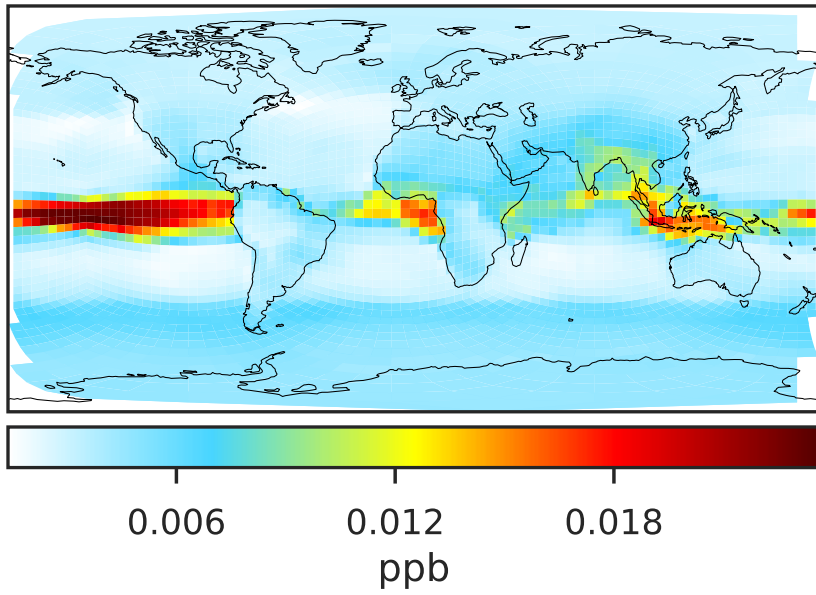
Ratio (1x1.25)
Dev/Ref, Fixed Range



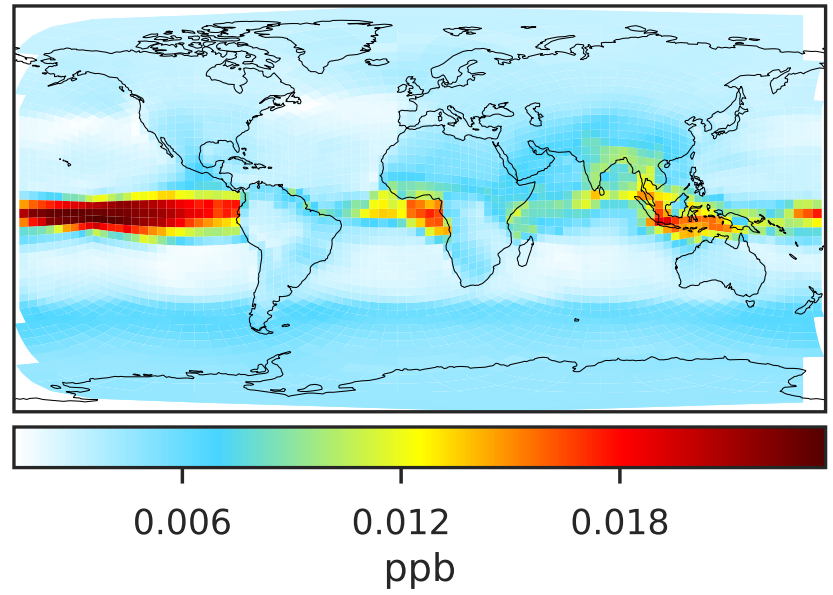
0.50 0.75 1.00 1.50 2.00
unitless

SpeciesConcVV_MENO3 (Apr2019)

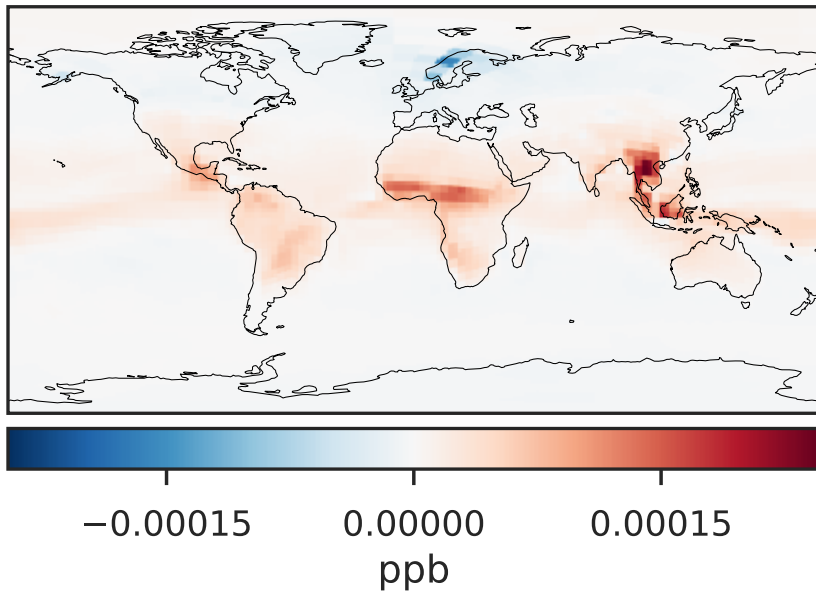
14.2.0-rc.2 (Ref)
c24



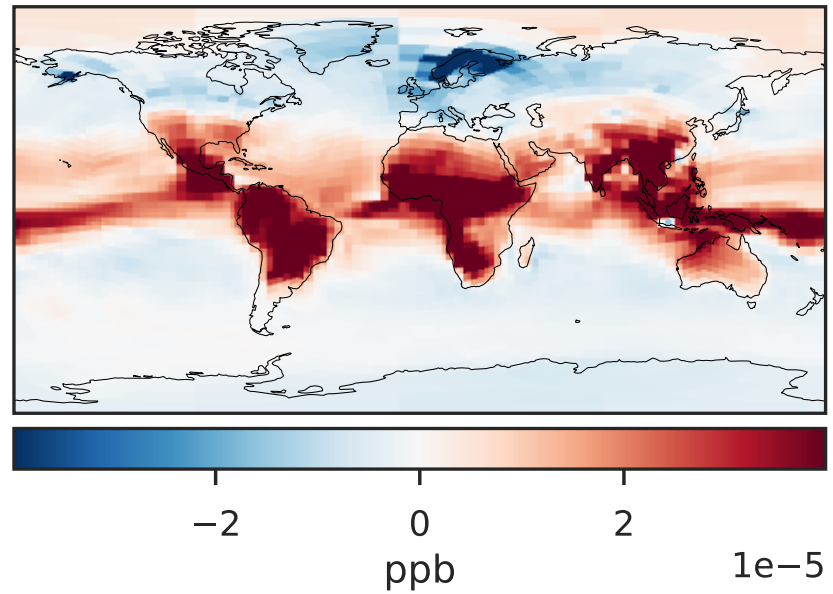
14.3.0-rc.0 (Dev)
c24



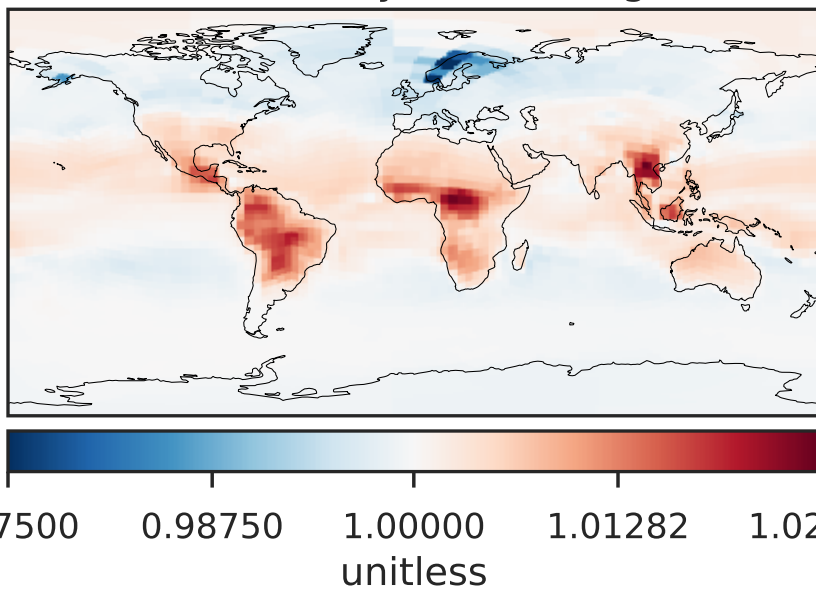
Difference (1x1.25)
Dev - Ref, Dynamic Range



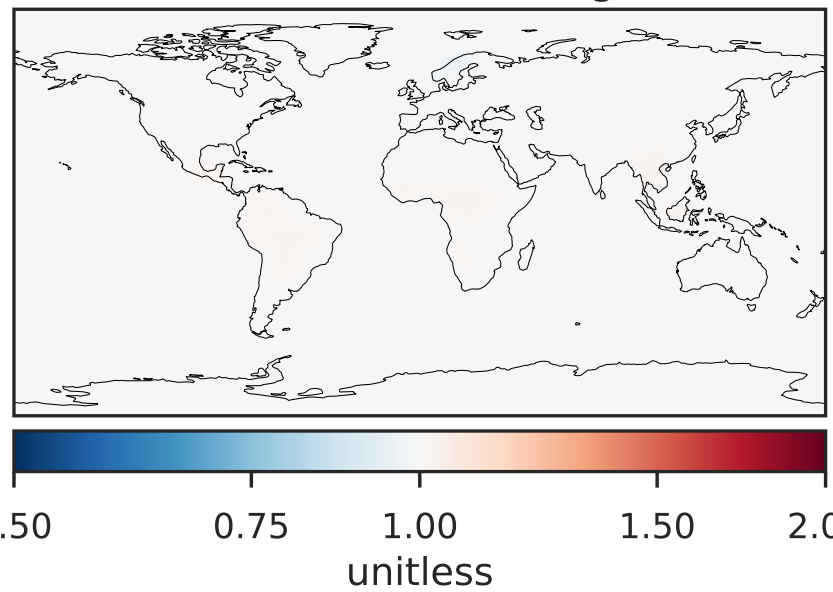
Difference (1x1.25)
Dev - Ref, Restricted Range [5%,95%]



Ratio (1x1.25)
Dev/Ref, Dynamic Range

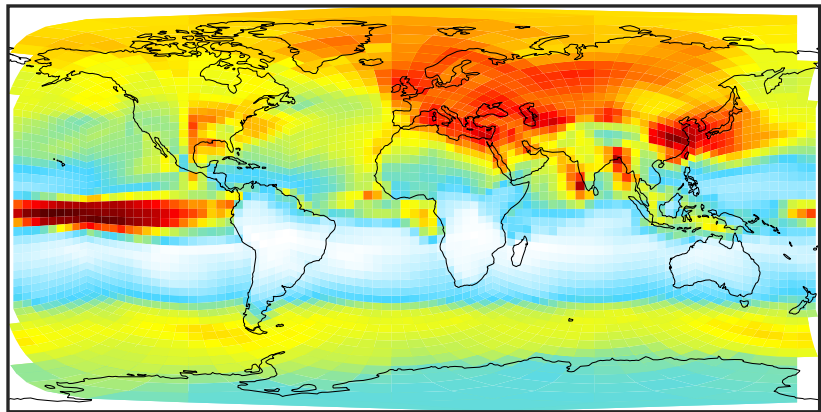


Ratio (1x1.25)
Dev/Ref, Fixed Range



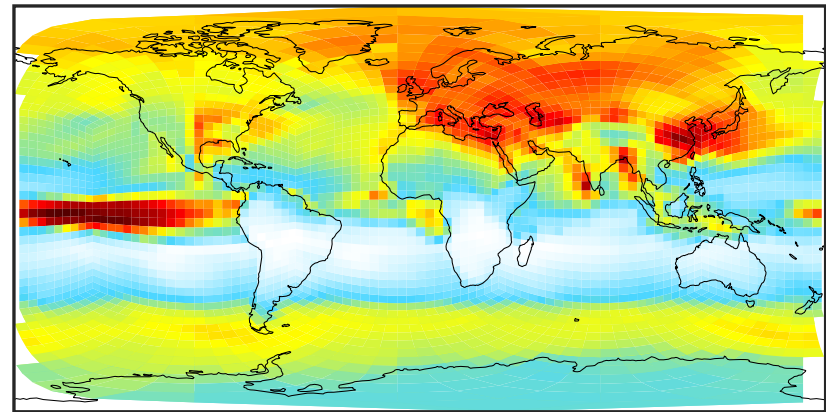
SpeciesConcVV_ETNO3 (Apr2019)

14.2.0-rc.2 (Ref)
c24



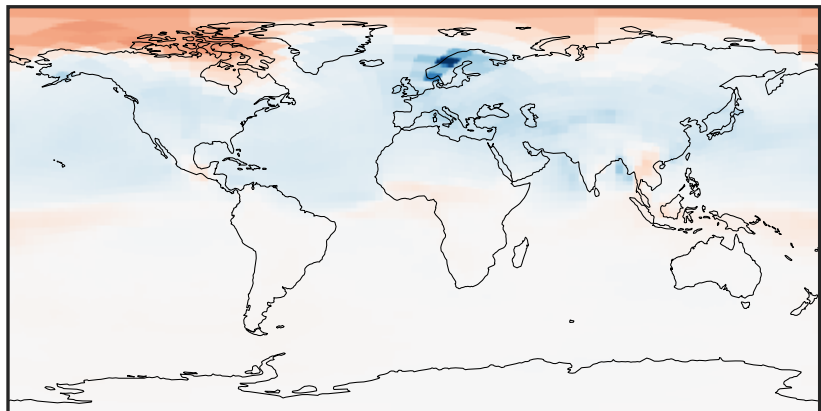
0.002 0.004 0.006 0.008
ppb

14.3.0-rc.0 (Dev)
c24



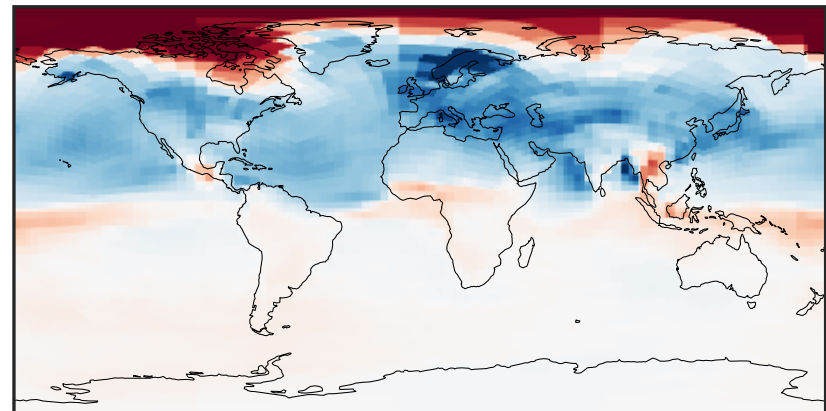
0.002 0.004 0.006 0.008
ppb

Difference (1x1.25)
Dev - Ref, Dynamic Range



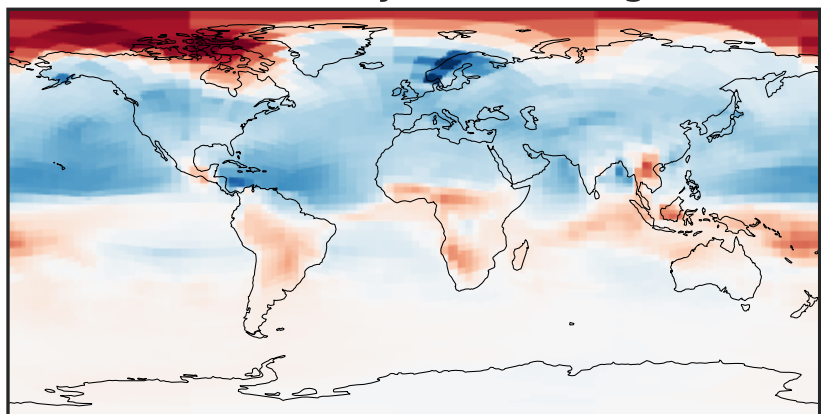
-0.00015 0.00000 0.00015
ppb

Difference (1x1.25)
Dev - Ref, Restricted Range [5%,95%]



-4 0 4
ppb $1e-5$

Ratio (1x1.25)
Dev/Ref, Dynamic Range



0.97717 0.98858 1.00000 1.01168 1.02337
unitless

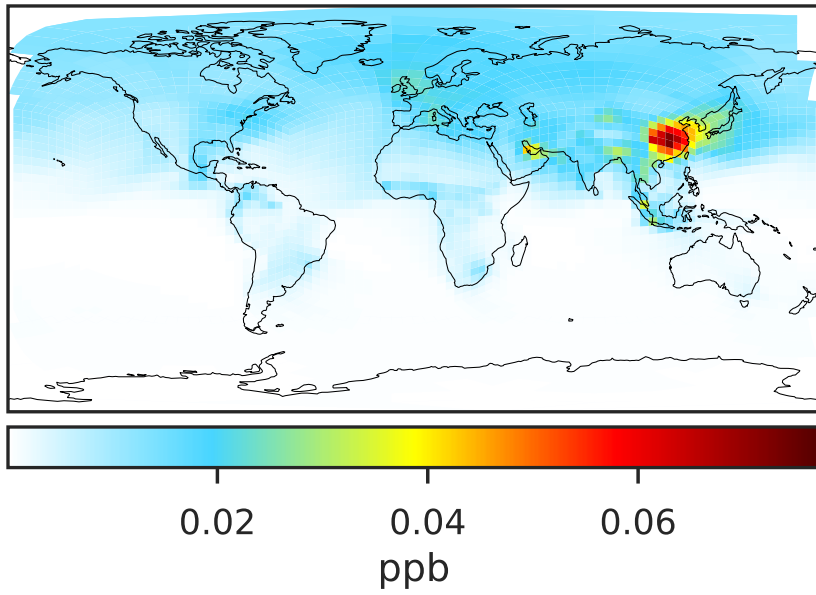
Ratio (1x1.25)
Dev/Ref, Fixed Range



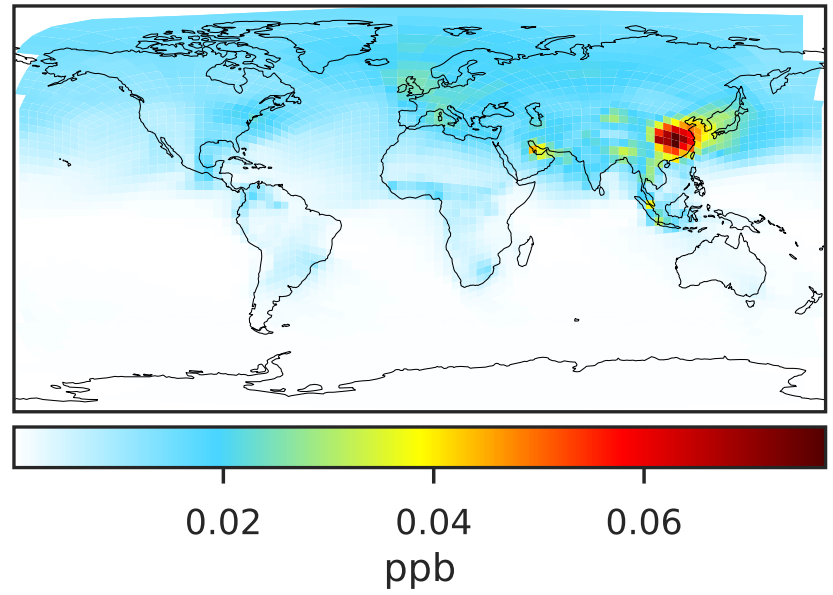
0.50 0.75 1.00 1.50 2.00
unitless

SpeciesConcVV_IPRNO3 (Apr2019)

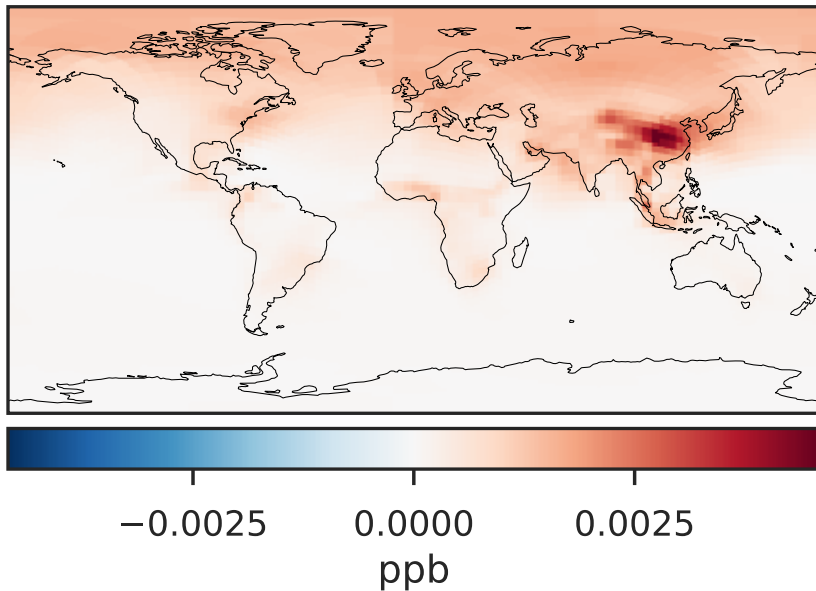
14.2.0-rc.2 (Ref)
c24



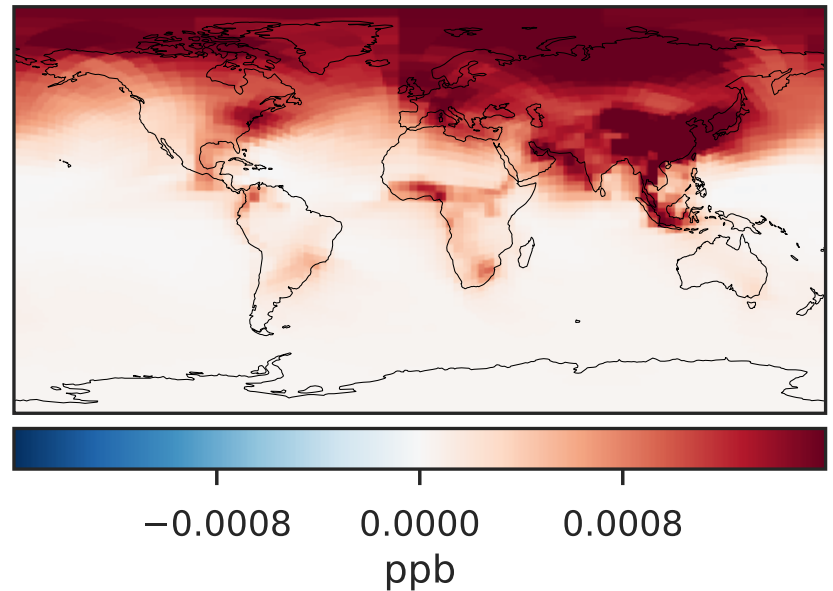
14.3.0-rc.0 (Dev)
c24



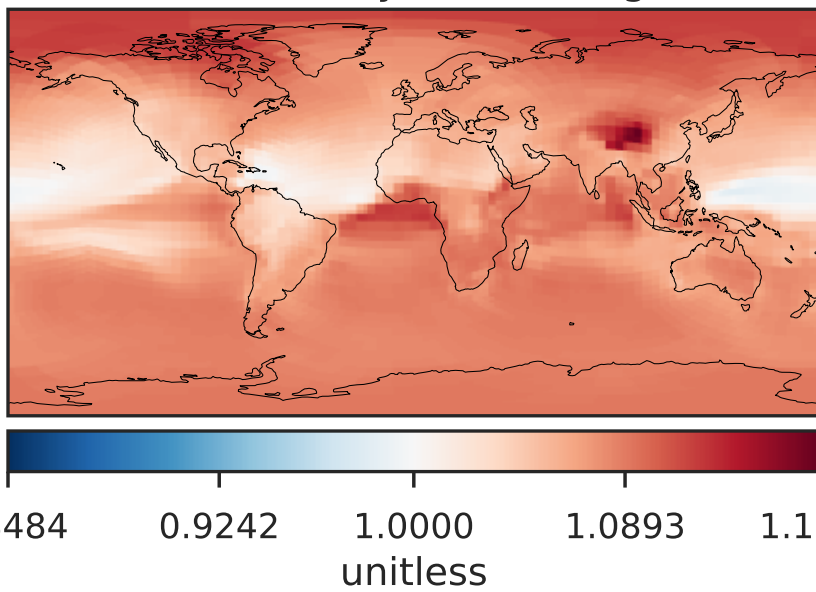
Difference (1x1.25)
Dev - Ref, Dynamic Range



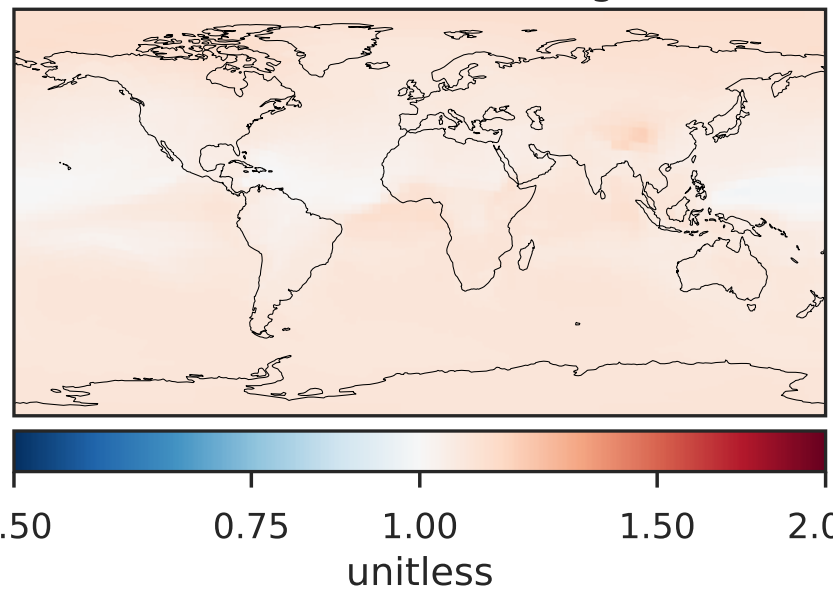
Difference (1x1.25)
Dev - Ref, Restricted Range [5%,95%]



Ratio (1x1.25)
Dev/Ref, Dynamic Range

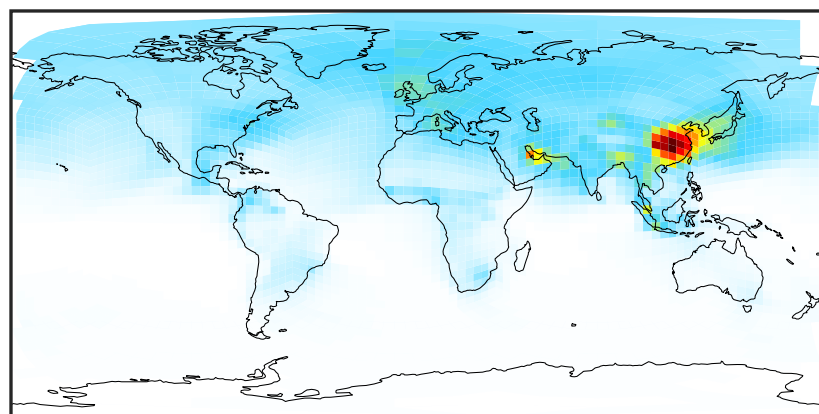


Ratio (1x1.25)
Dev/Ref, Fixed Range



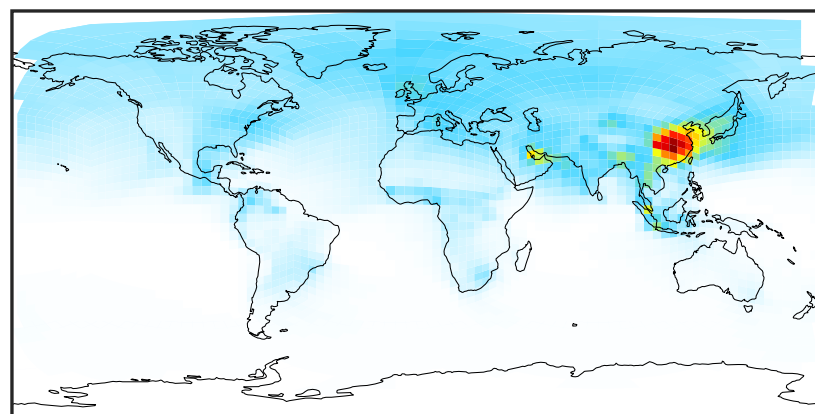
SpeciesConcVV_NPRNO3 (Apr2019)

14.2.0-rc.2 (Ref)
c24



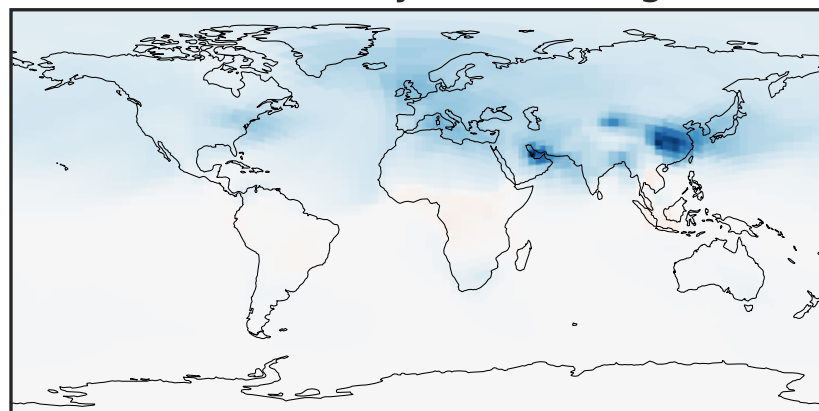
0.006 0.012 0.018
ppb

14.3.0-rc.0 (Dev)
c24



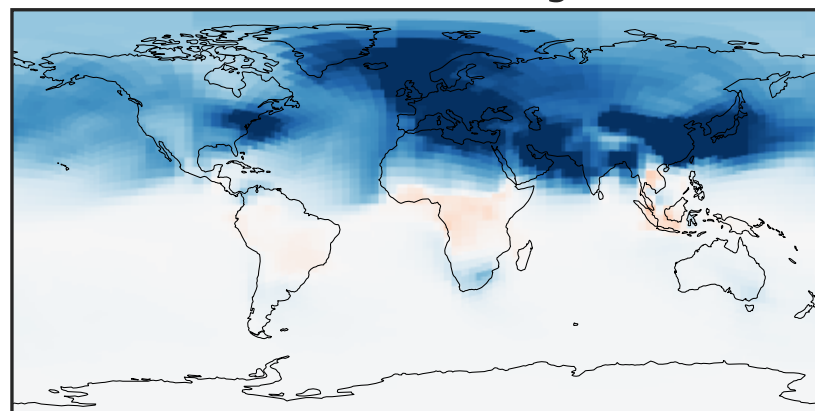
0.006 0.012 0.018
ppb

Difference (1x1.25)
Dev - Ref, Dynamic Range



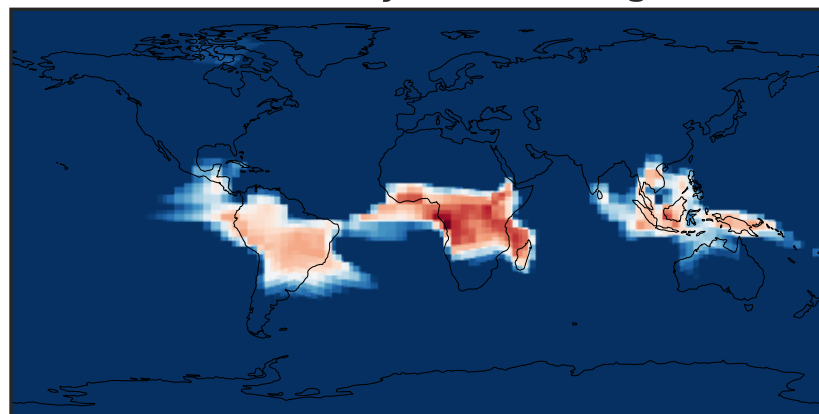
-0.001 0.000 0.001
ppb

Difference (1x1.25)
Dev - Ref, Restricted Range [5%,95%]



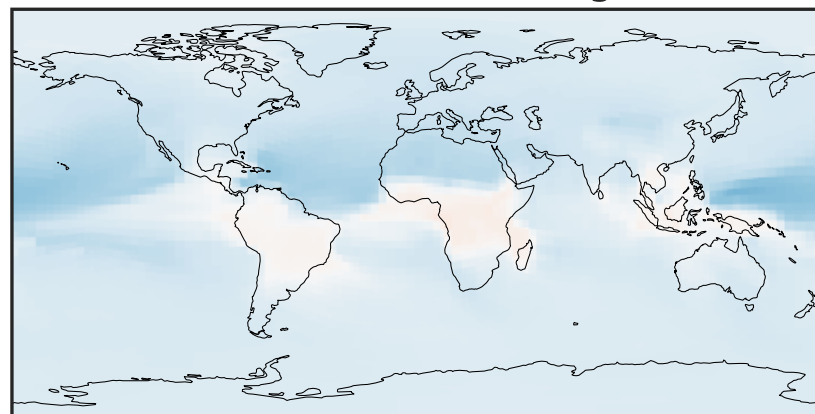
-0.0003 0.0000 0.0003
ppb

Ratio (1x1.25)
Dev/Ref, Dynamic Range



0.9372 0.9686 1.0000 1.0335 1.0670
unitless

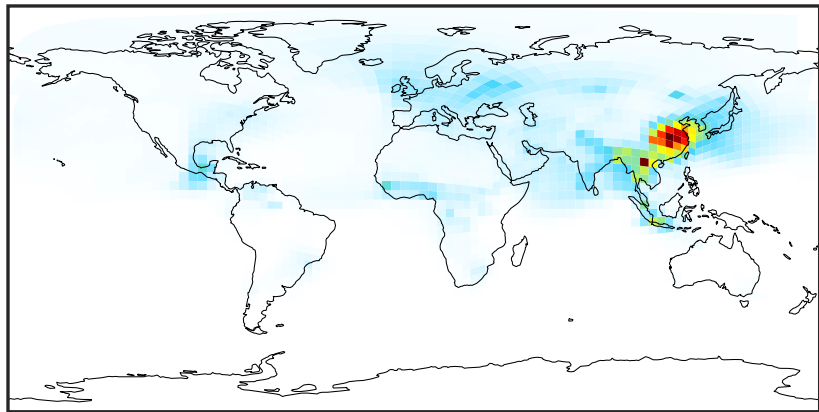
Ratio (1x1.25)
Dev/Ref, Fixed Range



0.50 0.75 1.00 1.50 2.00
unitless

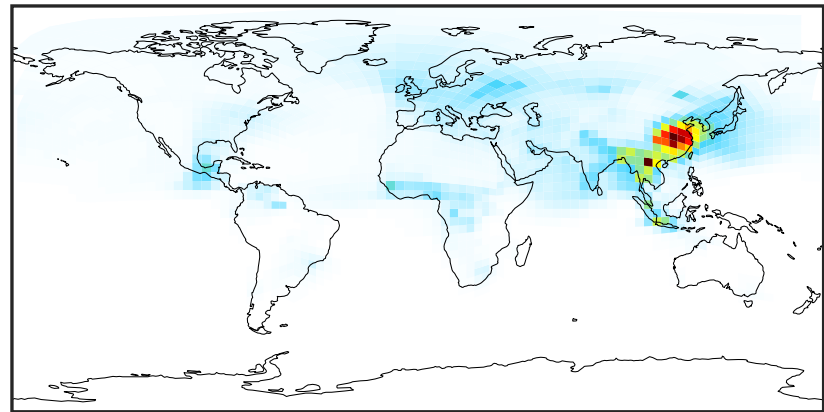
SpeciesConcVV_AONITA (Apr2019)

14.2.0-rc.2 (Ref)
c24



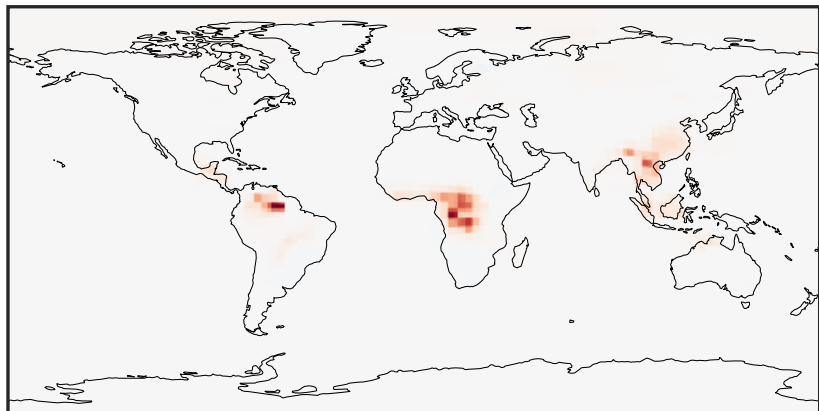
0.0000 0.0514 0.1027 0.1540 0.2054
ppb

14.3.0-rc.0 (Dev)
c24



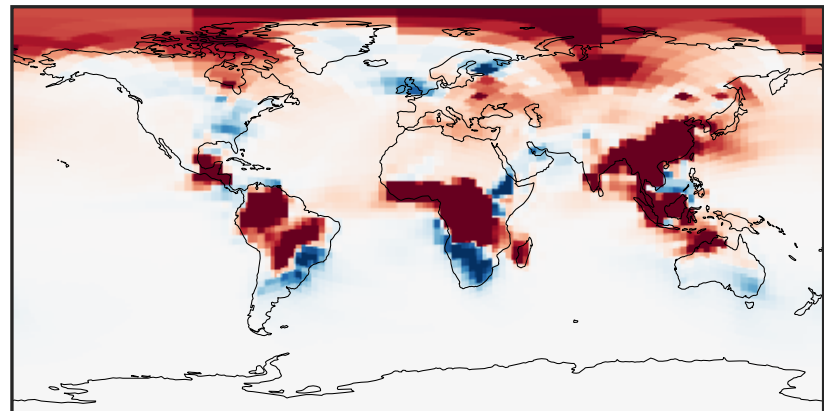
0.0000 0.0514 0.1027 0.1540 0.2054
ppb

Difference (1x1.25)
Dev - Ref, Dynamic Range



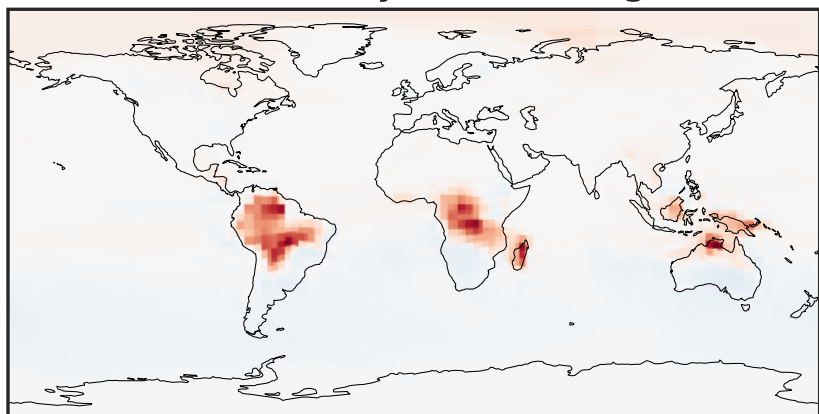
-0.008 0.000 0.008
ppb

Difference (1x1.25)
Dev - Ref, Restricted Range [5%,95%]



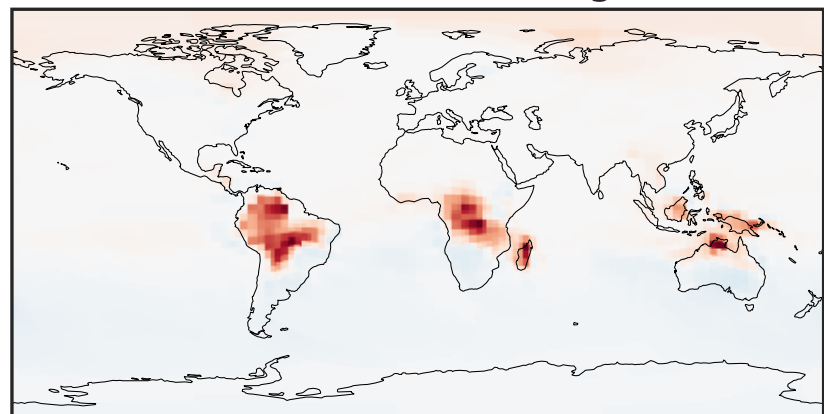
-0.00015 0.00000 0.00015
ppb

Ratio (1x1.25)
Dev/Ref, Dynamic Range



0.461 0.731 1.000 1.584 2.168
unitless

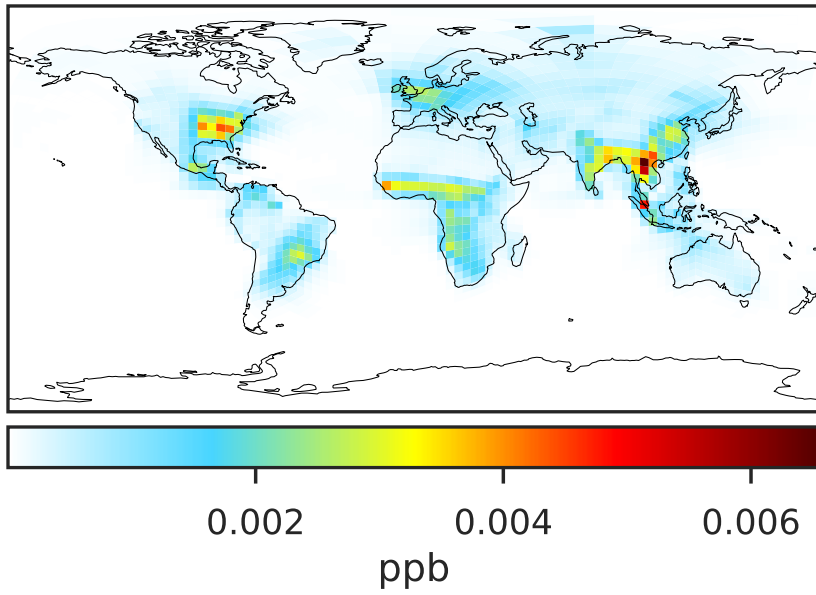
Ratio (1x1.25)
Dev/Ref, Fixed Range



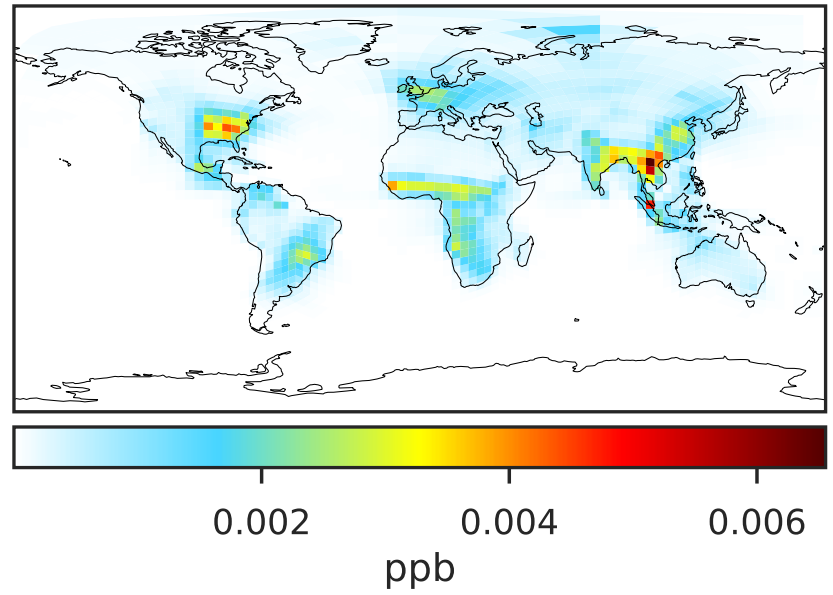
0.50 0.75 1.00 1.50 2.00
unitless

SpeciesConcVV_ETHN (Apr2019)

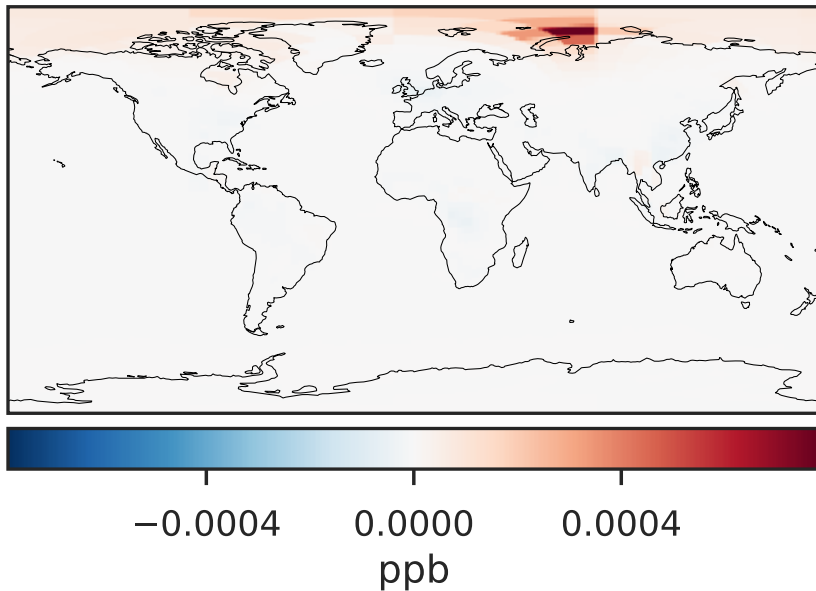
14.2.0-rc.2 (Ref)
c24



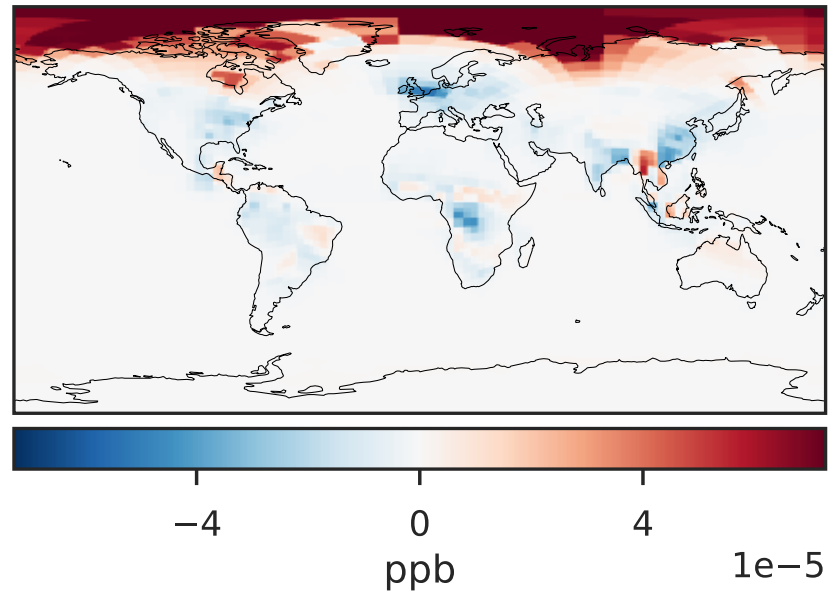
14.3.0-rc.0 (Dev)
c24



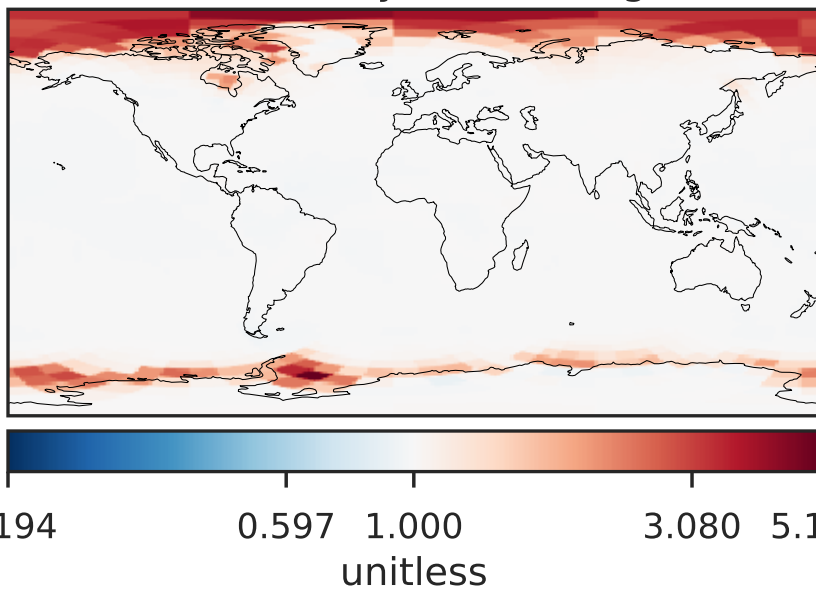
Difference (1x1.25)
Dev - Ref, Dynamic Range



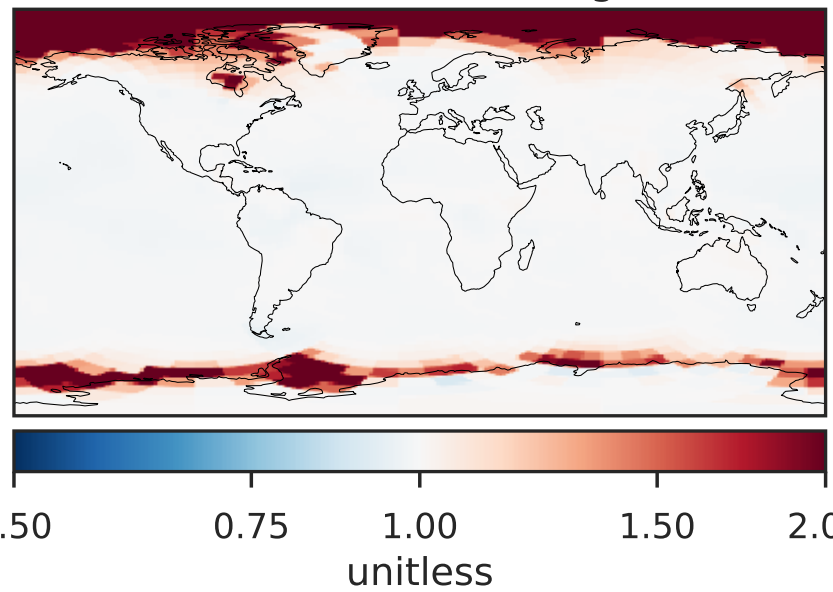
Difference (1x1.25)
Dev - Ref, Restricted Range [5%,95%]



Ratio (1x1.25)
Dev/Ref, Dynamic Range

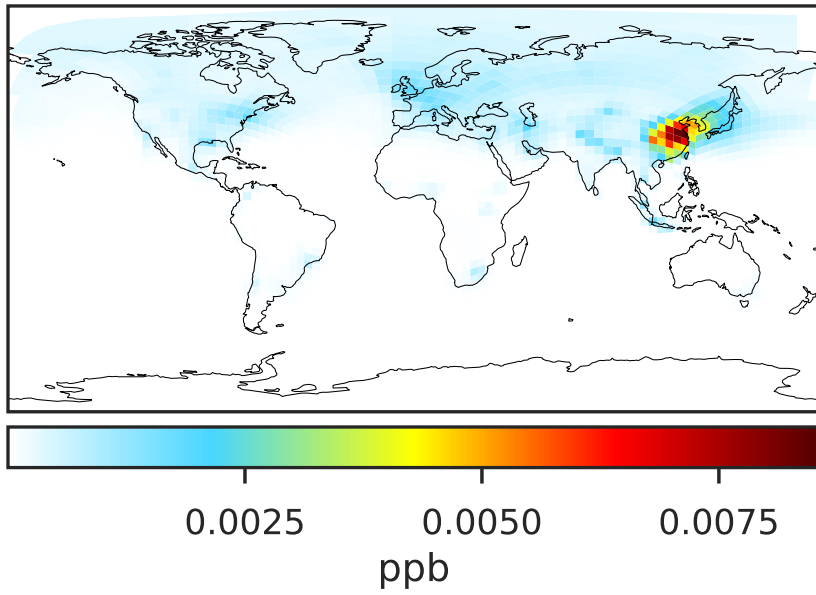


Ratio (1x1.25)
Dev/Ref, Fixed Range

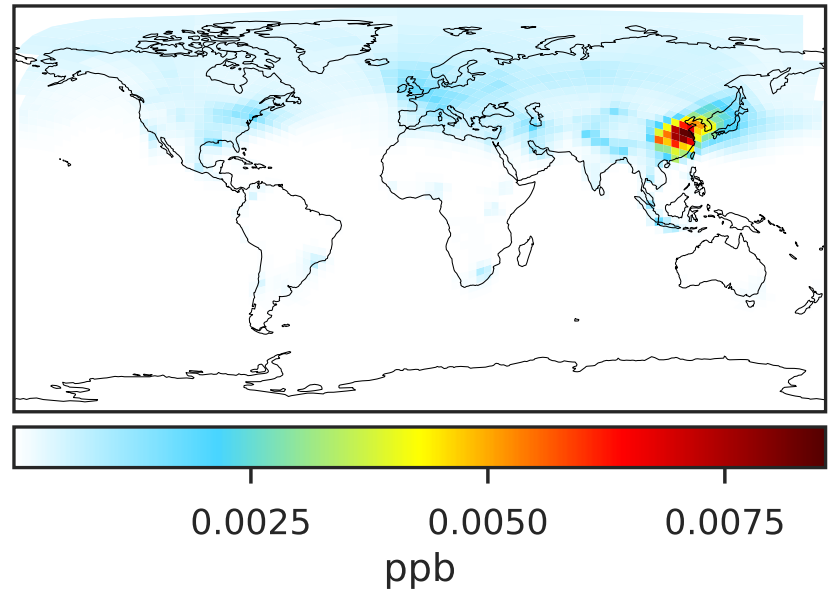


SpeciesConcVV_BZPAN (Apr2019)

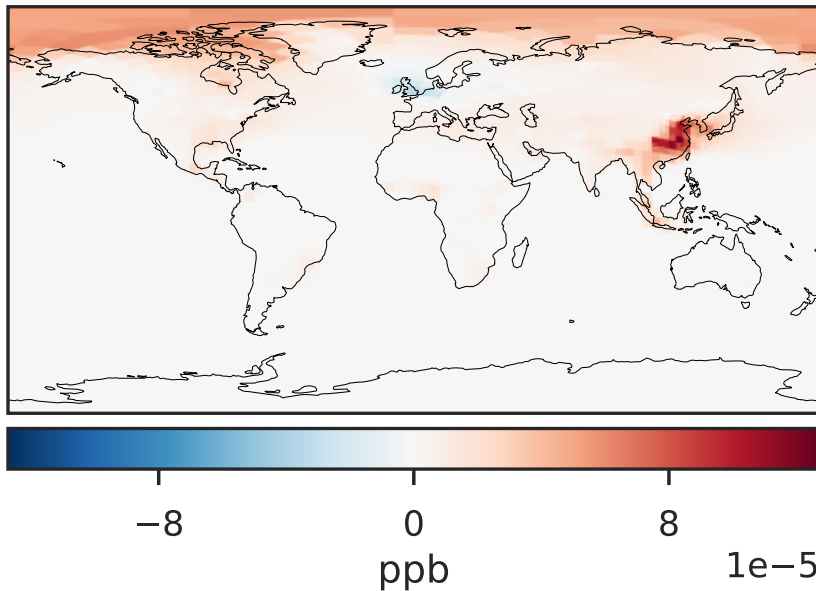
14.2.0-rc.2 (Ref)
c24



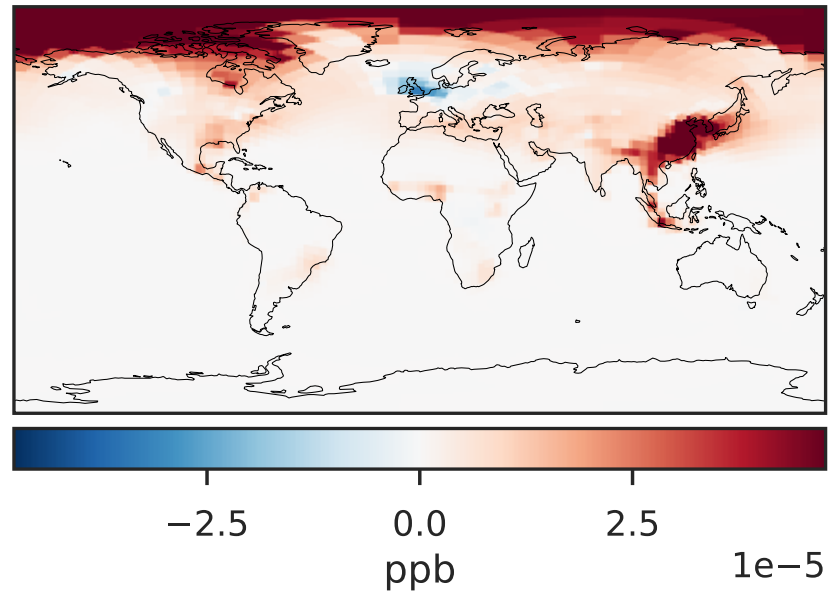
14.3.0-rc.0 (Dev)
c24



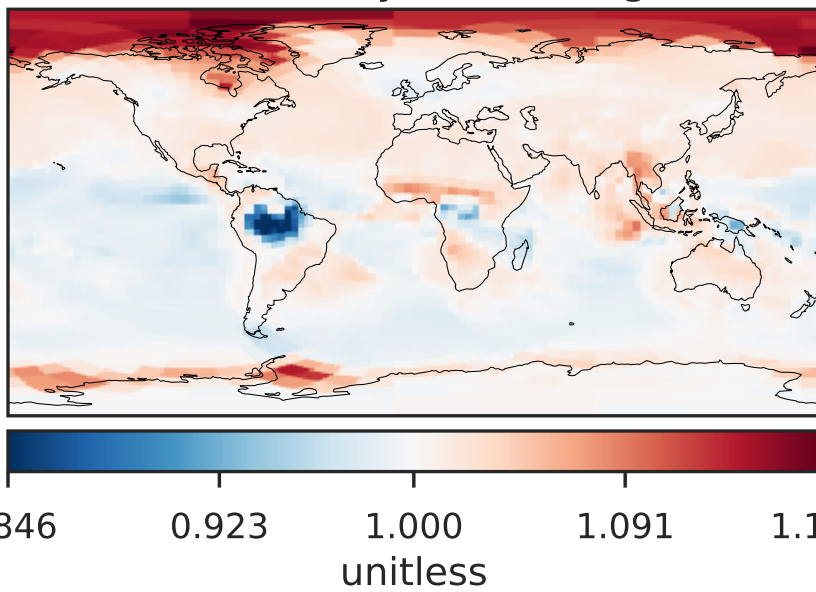
Difference (1x1.25)
Dev - Ref, Dynamic Range



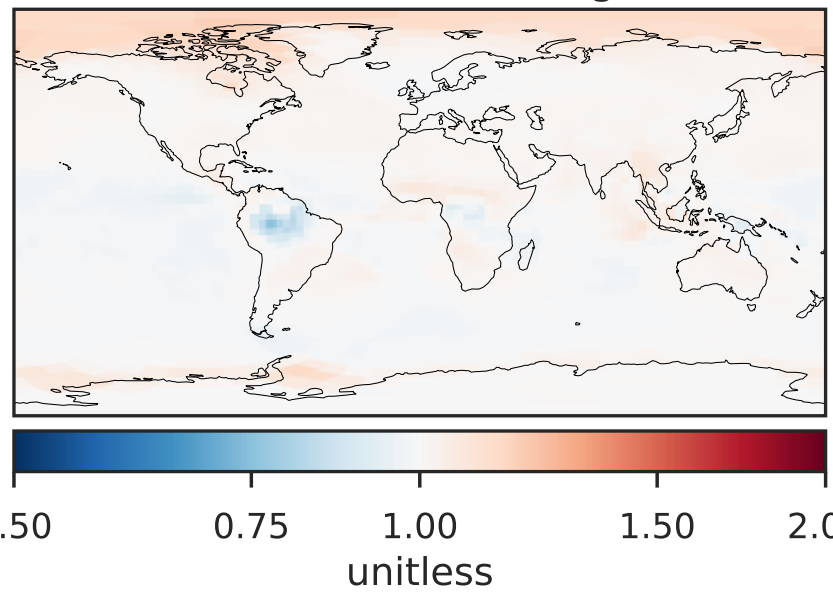
Difference (1x1.25)
Dev - Ref, Restricted Range [5%,95%]



Ratio (1x1.25)
Dev/Ref, Dynamic Range

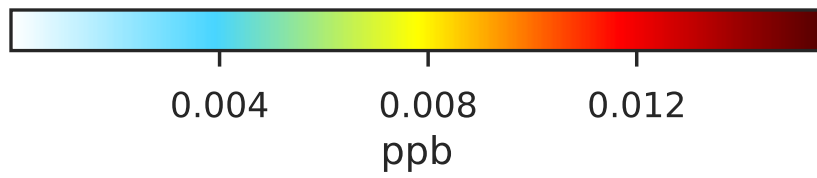
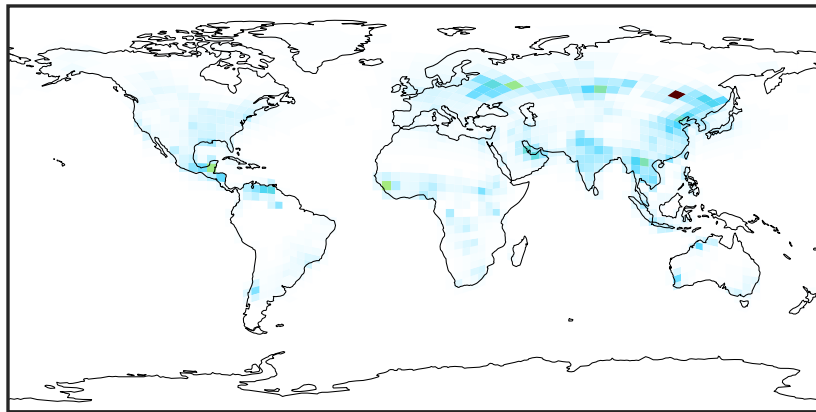


Ratio (1x1.25)
Dev/Ref, Fixed Range

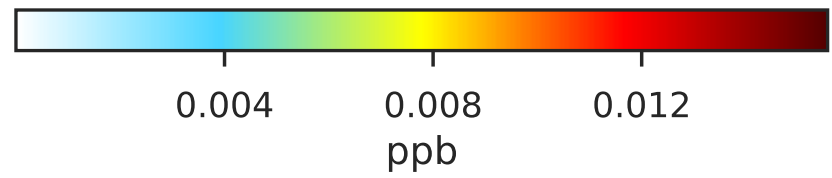
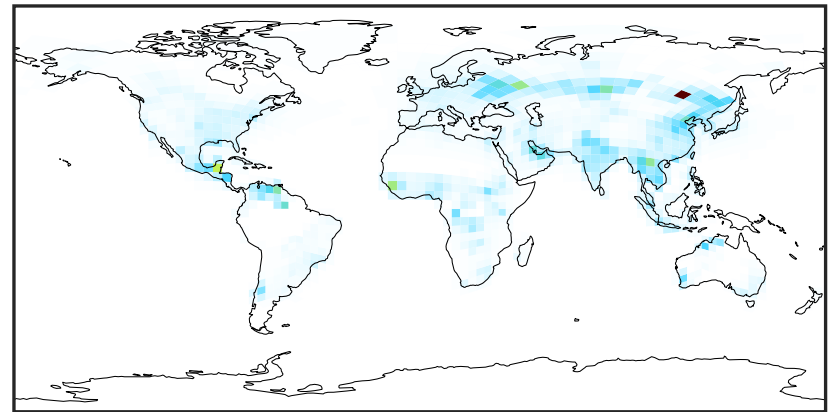


SpeciesConcVV_NPHEN (Apr2019)

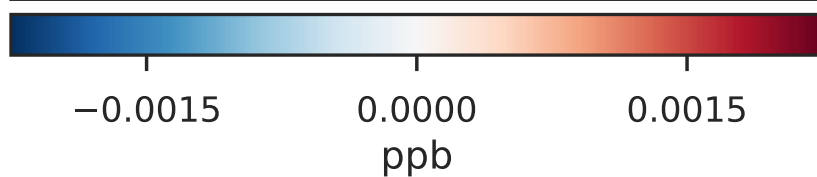
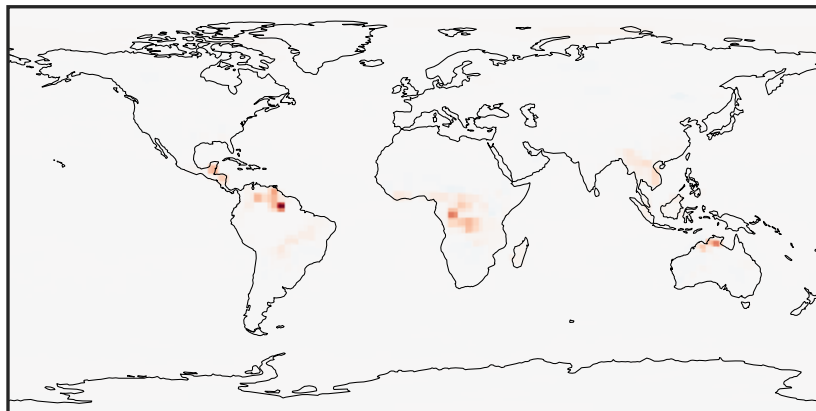
14.2.0-rc.2 (Ref)
c24



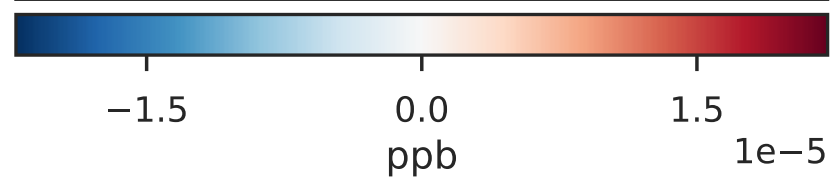
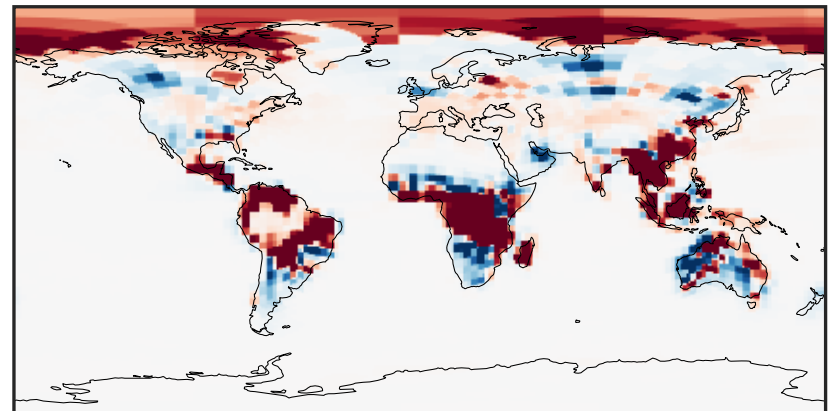
14.3.0-rc.0 (Dev)
c24



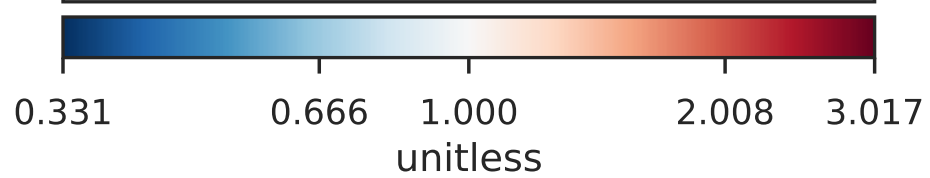
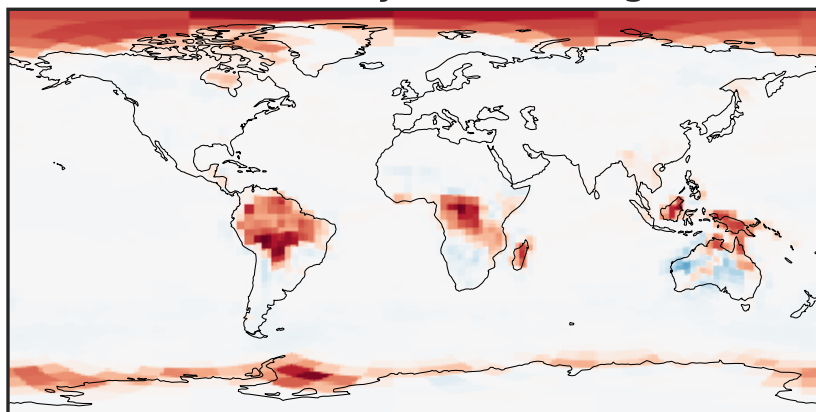
Difference (1x1.25)
Dev - Ref, Dynamic Range



Difference (1x1.25)
Dev - Ref, Restricted Range [5%,95%]



Ratio (1x1.25)
Dev/Ref, Dynamic Range



Ratio (1x1.25)
Dev/Ref, Fixed Range

