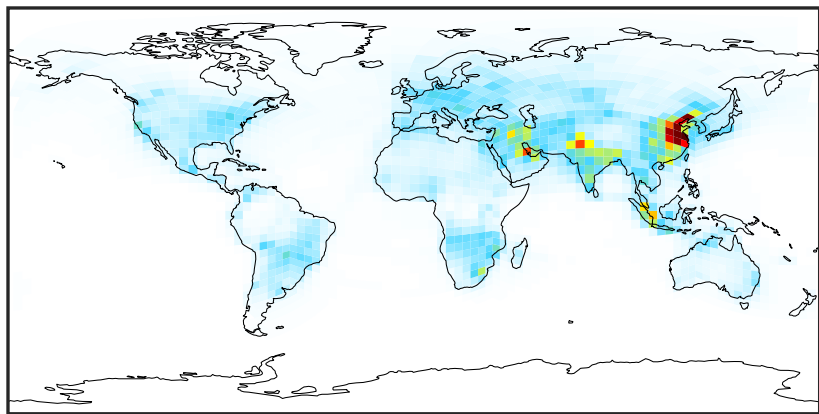


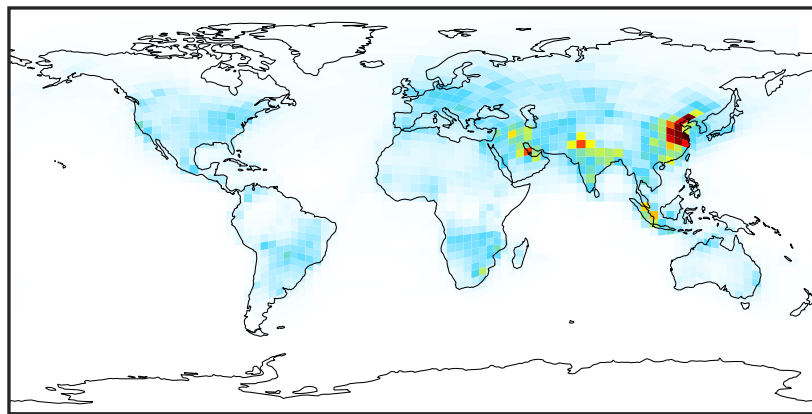
# SpeciesConcVV\_NOy (Oct2019)

14.2.0-rc.2 (Ref)  
c24



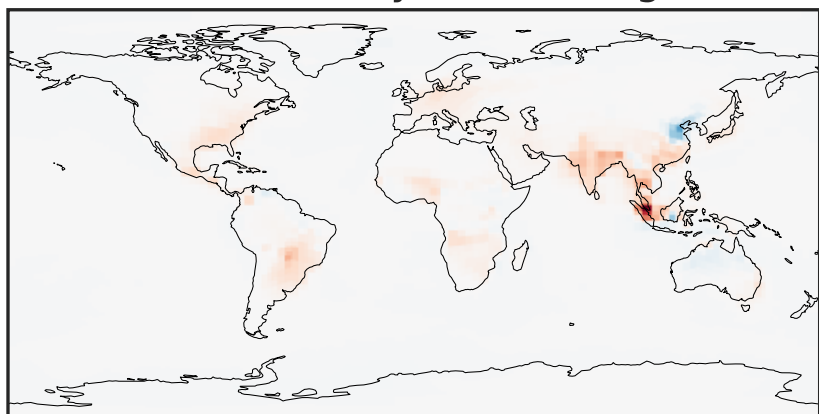
0.02 4.18 8.34 12.50 16.66  
ppb

14.3.0-rc.0 (Dev)  
c24



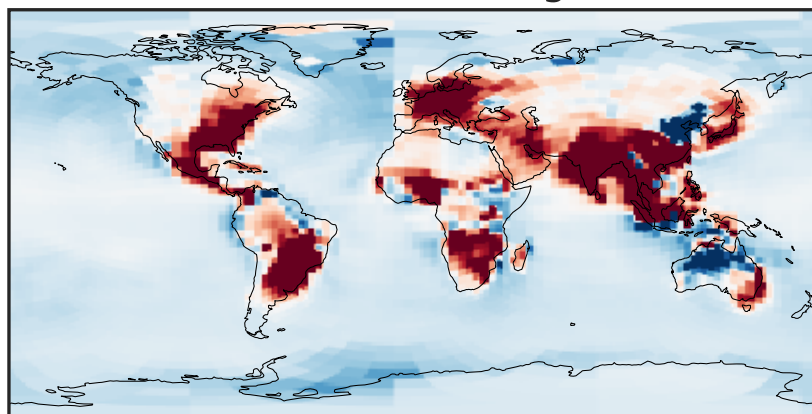
0.02 4.18 8.34 12.50 16.66  
ppb

Difference (1x1.25)  
Dev - Ref, Dynamic Range



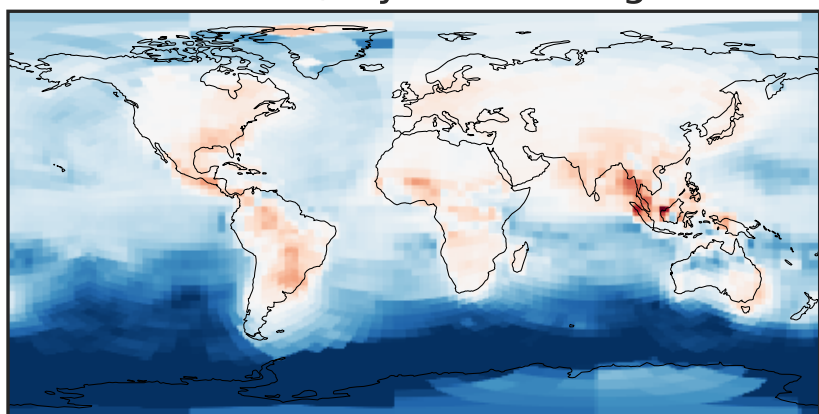
-0.1703 -0.0852 0.0000 0.0852 0.1703  
ppb

Difference (1x1.25)  
Dev - Ref, Restricted Range [5%,95%]



-0.004 0.000 0.004  
ppb

Ratio (1x1.25)  
Dev/Ref, Dynamic Range



0.95738 0.97869 1.00000 1.02226 1.04452  
unitless

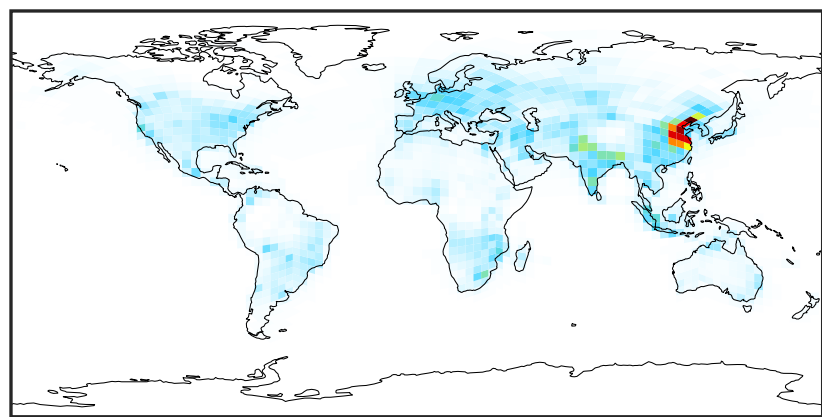
Ratio (1x1.25)  
Dev/Ref, Fixed Range



0.50 0.75 1.00 1.50 2.00  
unitless

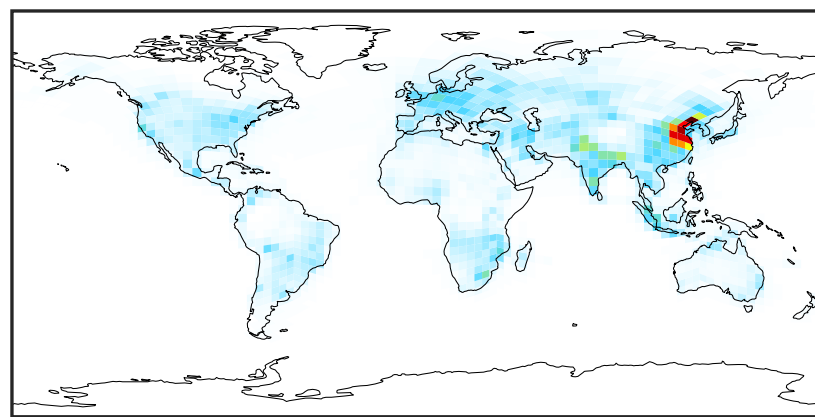
# SpeciesConcVV\_NOx (Oct2019)

14.2.0-rc.2 (Ref)  
c24



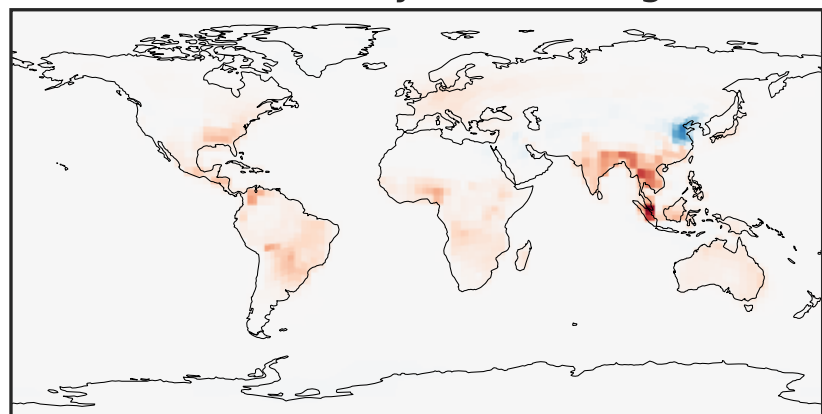
0.00 3.33 6.66 9.99 13.32  
ppb

14.3.0-rc.0 (Dev)  
c24



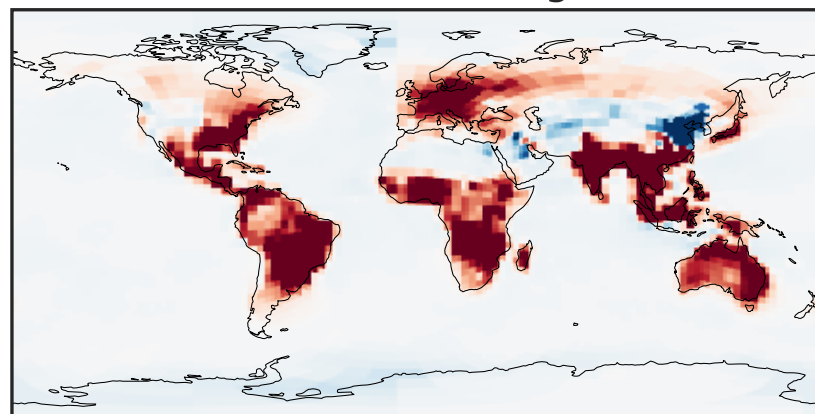
0.00 3.33 6.66 9.99 13.32  
ppb

Difference (1x1.25)  
Dev - Ref, Dynamic Range



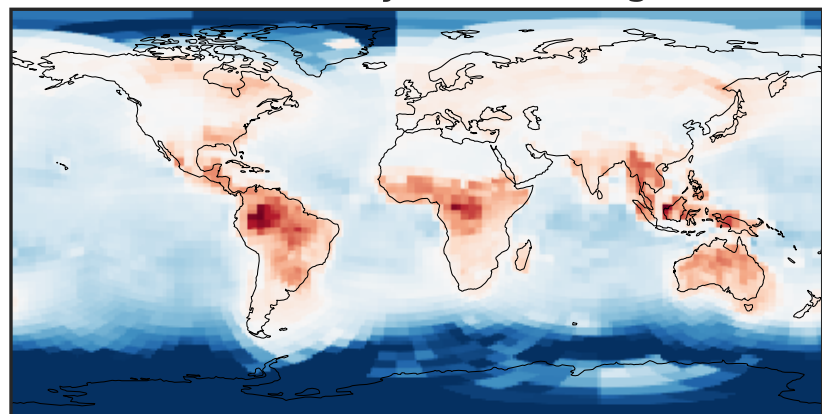
-0.1905 -0.0953 0.0000 0.0953 0.1905  
ppb

Difference (1x1.25)  
Dev - Ref, Restricted Range [5%,95%]



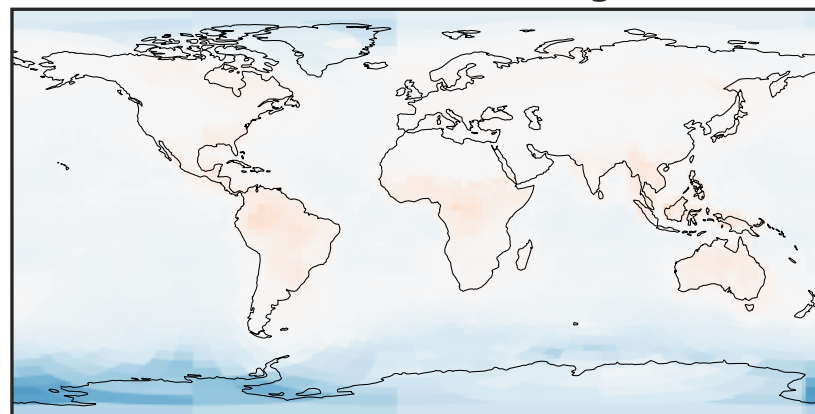
-0.008 0.000 0.008  
ppb

Ratio (1x1.25)  
Dev/Ref, Dynamic Range



0.8874 0.9437 1.0000 1.0635 1.1269  
unitless

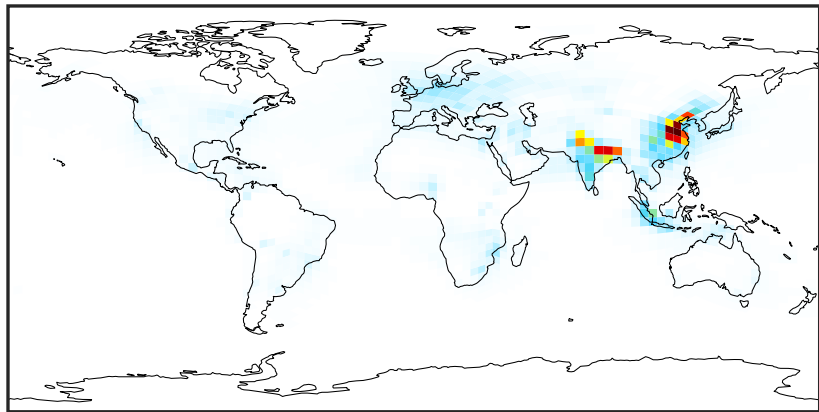
Ratio (1x1.25)  
Dev/Ref, Fixed Range



0.50 0.75 1.00 1.50 2.00  
unitless

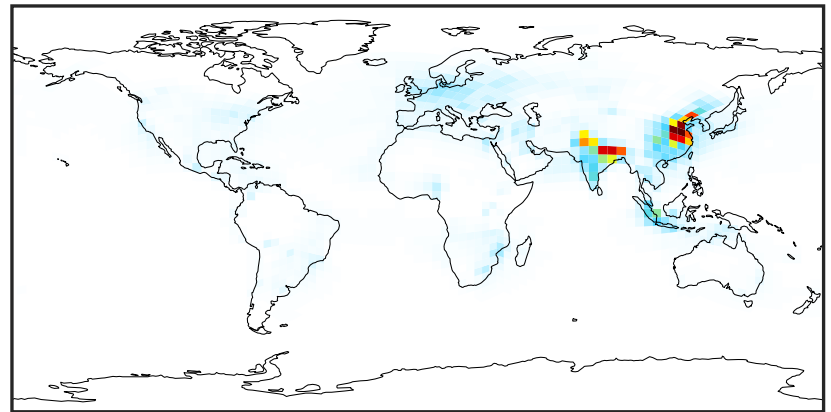
# SpeciesConcVV\_HNO2 (Oct2019)

14.2.0-rc.2 (Ref)  
c24



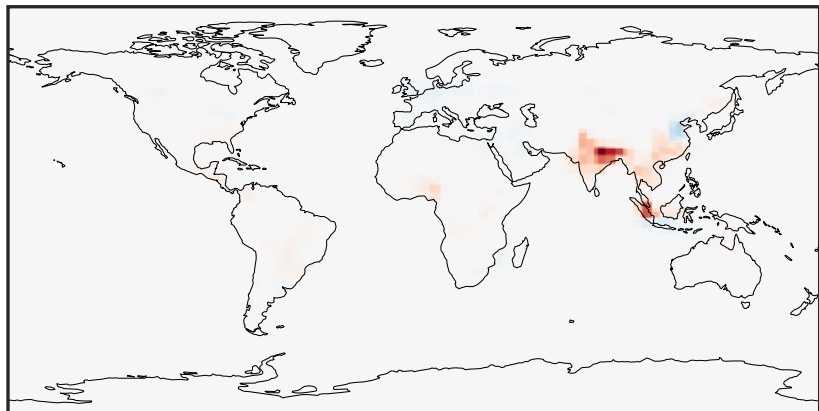
0.0000 0.0532 0.1064 0.1597 0.2129  
ppb

14.3.0-rc.0 (Dev)  
c24



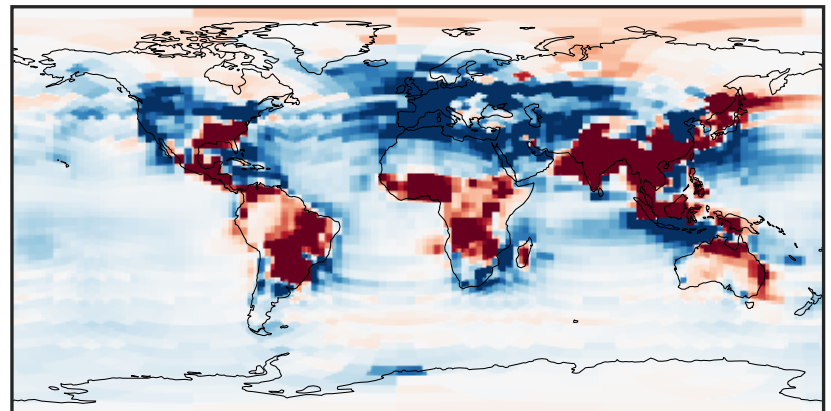
0.0000 0.0532 0.1064 0.1597 0.2129  
ppb

Difference (1x1.25)  
Dev - Ref, Dynamic Range



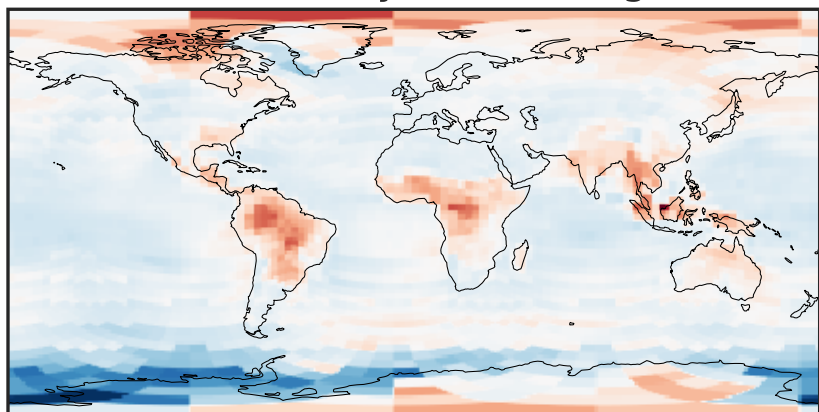
-0.0025 0.0000 0.0025  
ppb

Difference (1x1.25)  
Dev - Ref, Restricted Range [5%,95%]



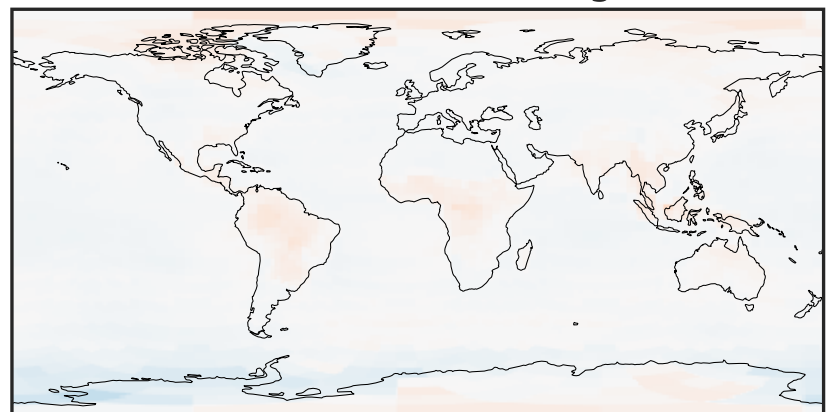
-2.5 0.0 2.5  
ppb 1e-5

Ratio (1x1.25)  
Dev/Ref, Dynamic Range



0.8752 0.9376 1.0000 1.0713 1.1426  
unitless

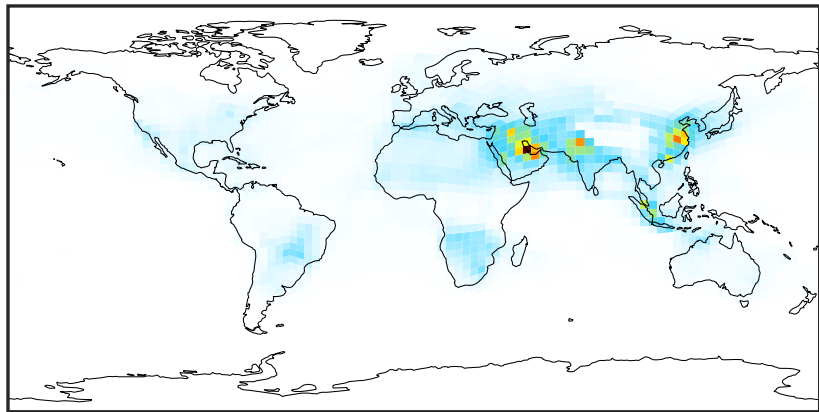
Ratio (1x1.25)  
Dev/Ref, Fixed Range



0.50 0.75 1.00 1.50 2.00  
unitless

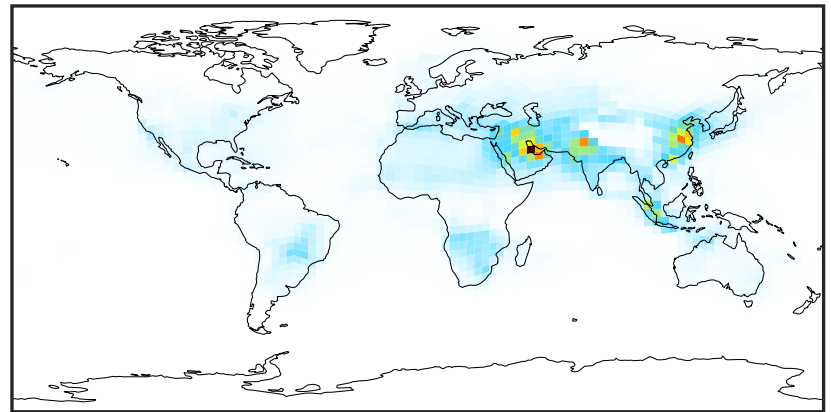
# SpeciesConcVV\_HNO3 (Oct2019)

14.2.0-rc.2 (Ref)  
c24



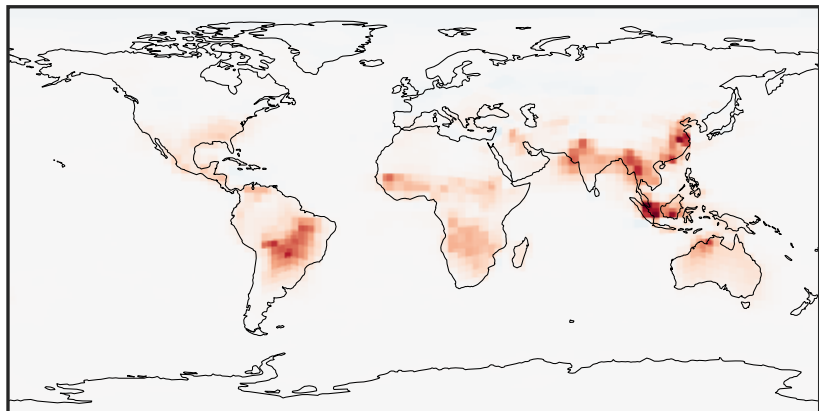
0.000 2.160 4.321 6.481 8.641  
ppb

14.3.0-rc.0 (Dev)  
c24



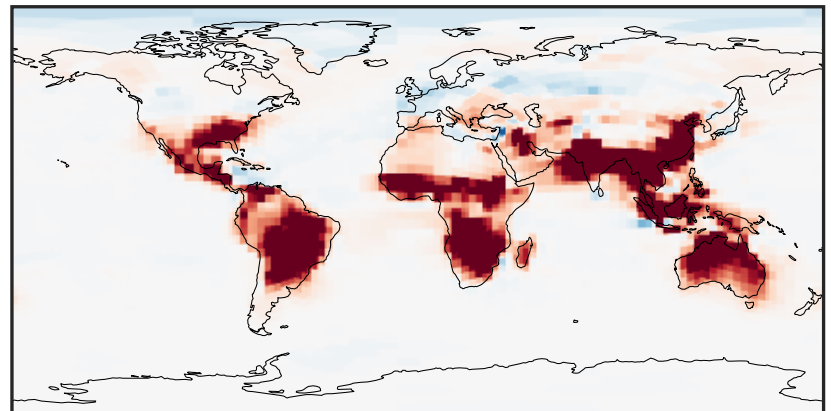
0.000 2.160 4.321 6.481 8.641  
ppb

Difference (1x1.25)  
Dev - Ref, Dynamic Range



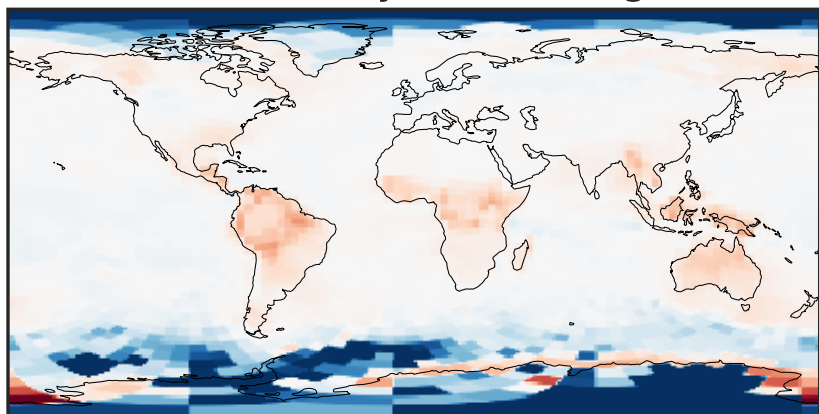
-0.0506 -0.0253 0.0000 0.0253 0.0506  
ppb

Difference (1x1.25)  
Dev - Ref, Restricted Range [5%,95%]



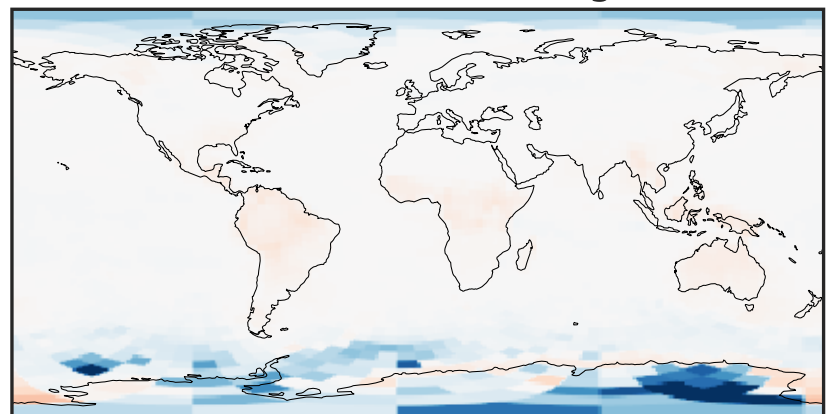
-0.004 0.000 0.004  
ppb

Ratio (1x1.25)  
Dev/Ref, Dynamic Range



0.8226 0.9113 1.0000 1.1078 1.2157  
unitless

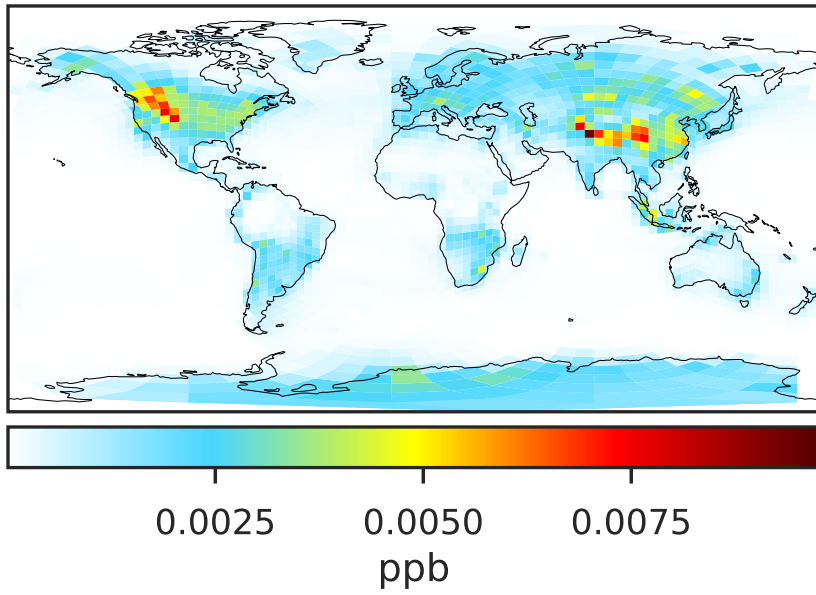
Ratio (1x1.25)  
Dev/Ref, Fixed Range



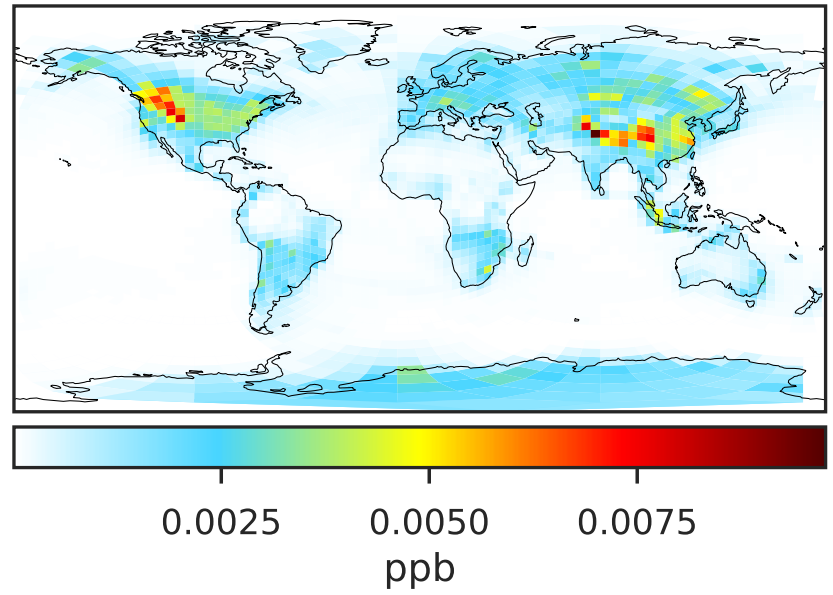
0.50 0.75 1.00 1.50 2.00  
unitless

# SpeciesConcVV\_HNO4 (Oct2019)

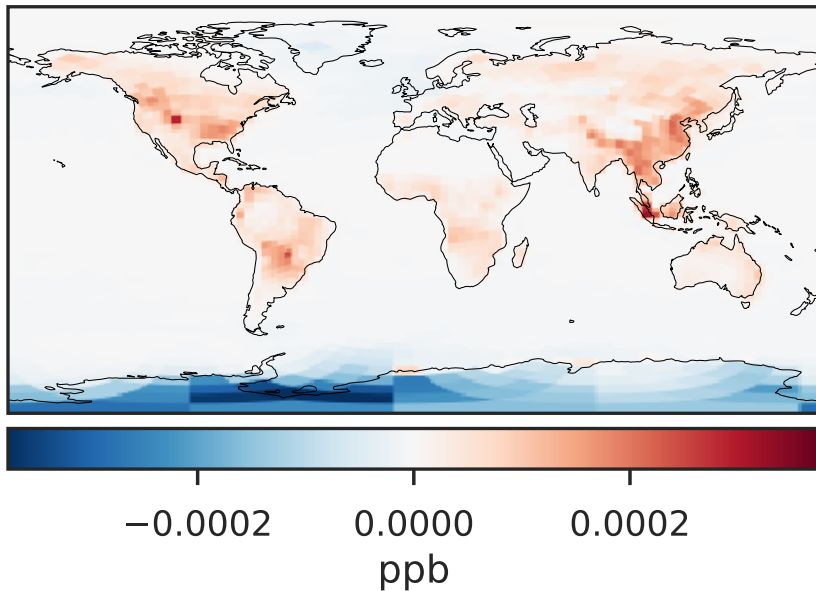
14.2.0-rc.2 (Ref)  
c24



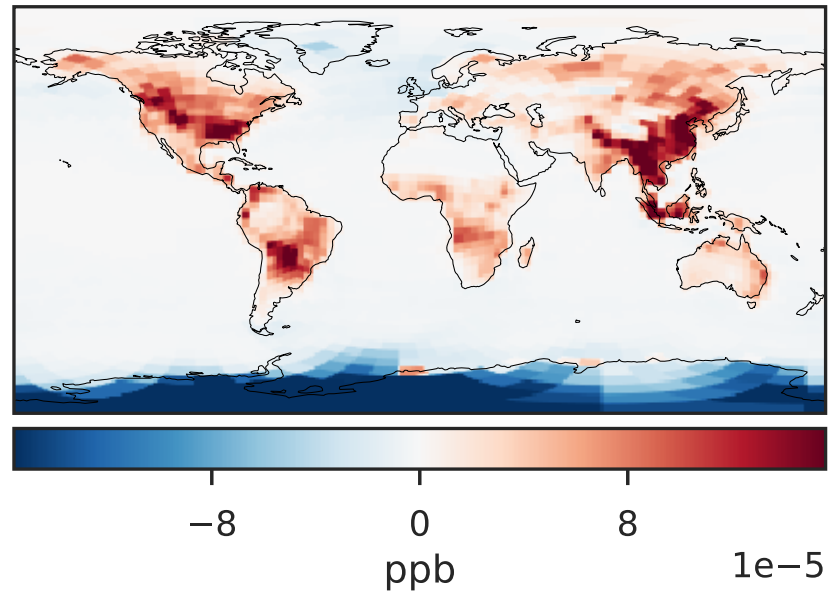
14.3.0-rc.0 (Dev)  
c24



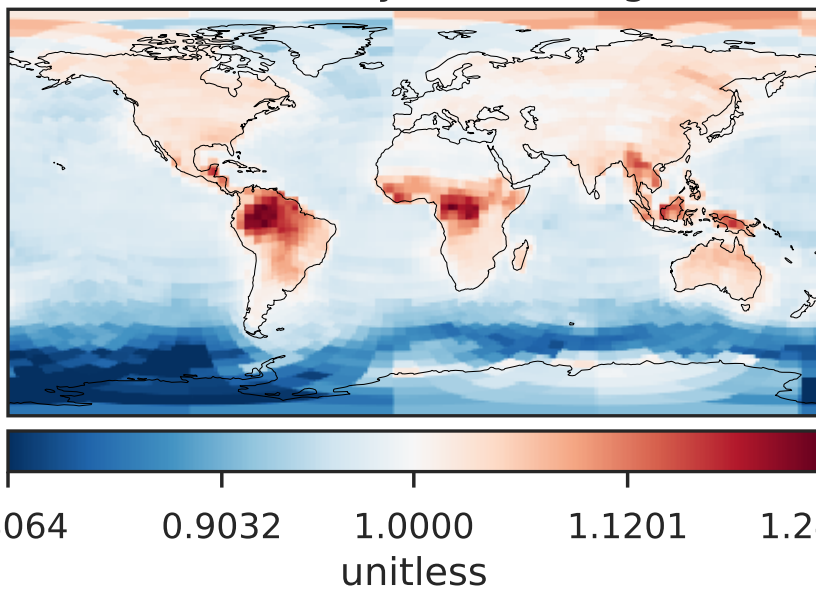
Difference (1x1.25)  
Dev - Ref, Dynamic Range



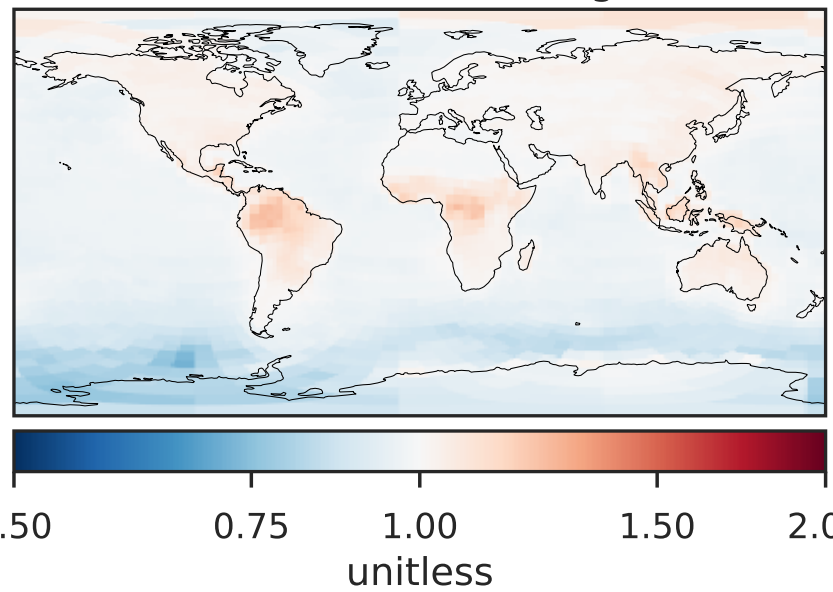
Difference (1x1.25)  
Dev - Ref, Restricted Range [5%,95%]



Ratio (1x1.25)  
Dev/Ref, Dynamic Range

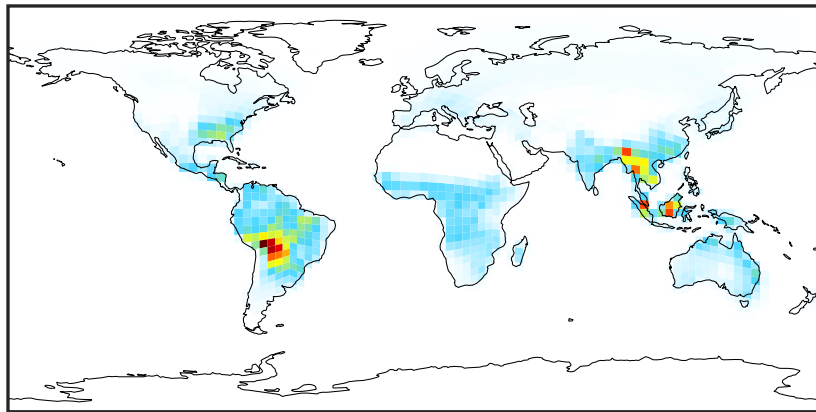


Ratio (1x1.25)  
Dev/Ref, Fixed Range



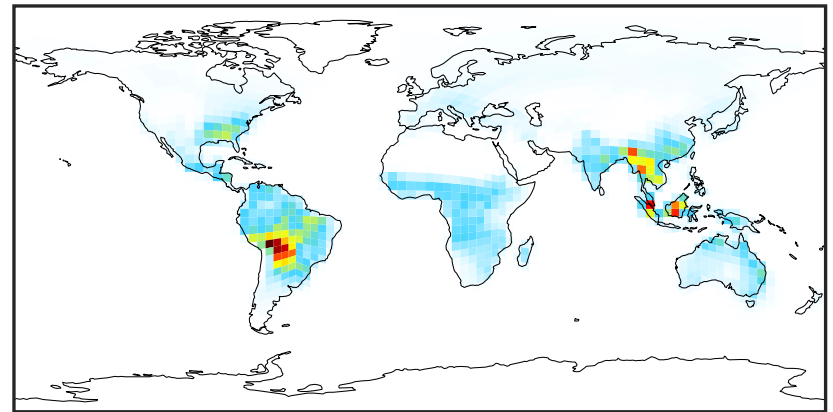
# SpeciesConcVV\_MPAN (Oct2019)

14.2.0-rc.2 (Ref)  
c24



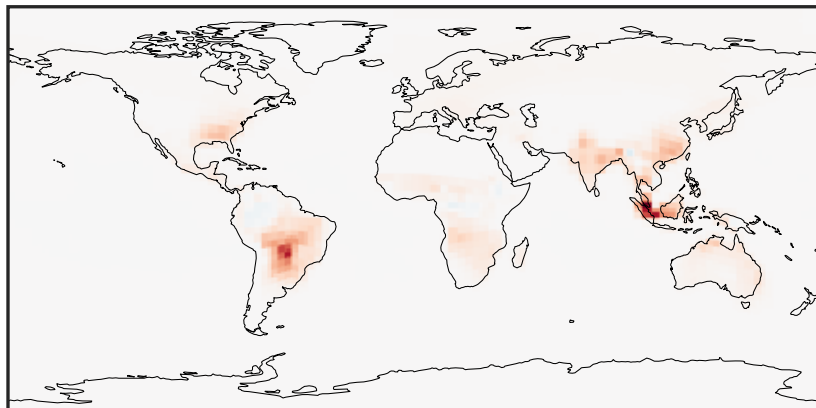
0.000 0.015 0.030 0.045  
ppb

14.3.0-rc.0 (Dev)  
c24



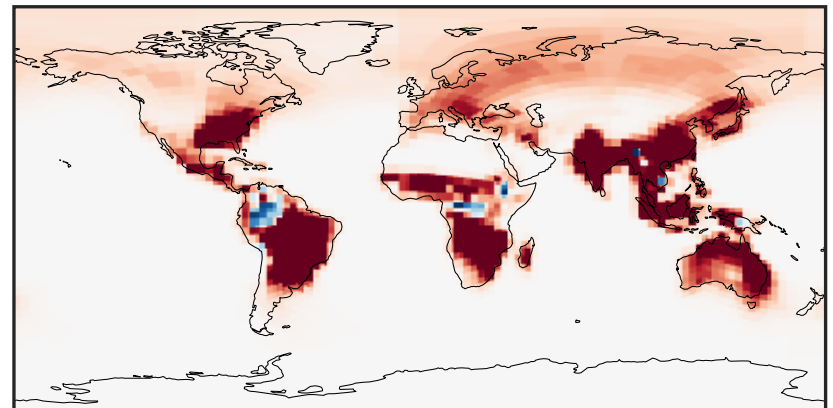
0.000 0.015 0.030 0.045  
ppb

Difference (1x1.25)  
Dev - Ref, Dynamic Range



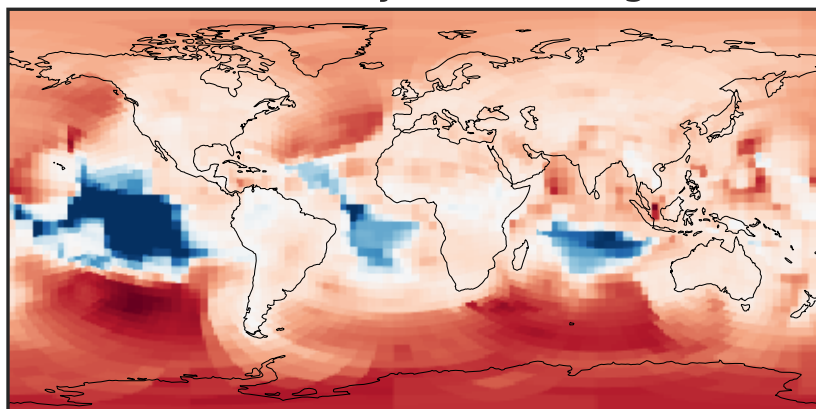
-0.002 0.000 0.002  
ppb

Difference (1x1.25)  
Dev - Ref, Restricted Range [5%,95%]



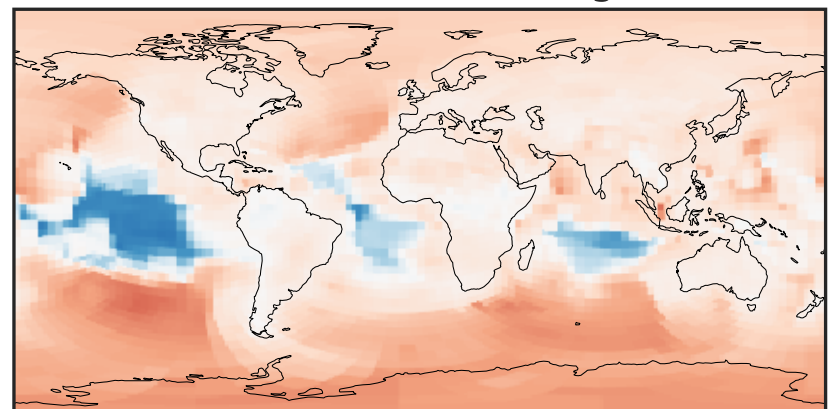
-0.0001 0.0000 0.0001  
ppb

Ratio (1x1.25)  
Dev/Ref, Dynamic Range



0.6770 0.8385 1.0000 1.2385 1.4770  
unitless

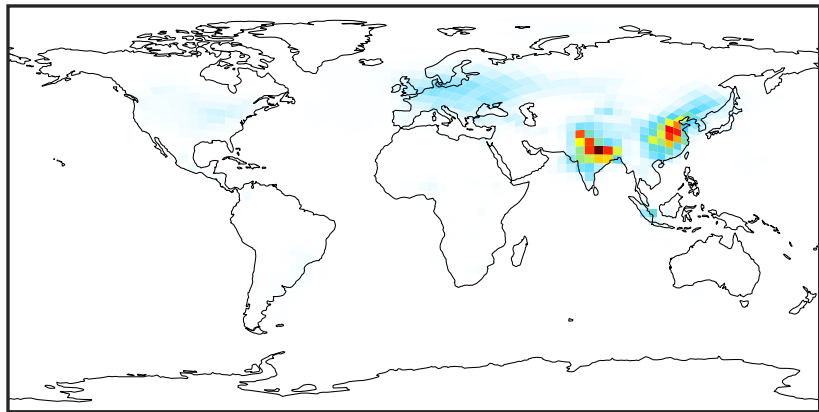
Ratio (1x1.25)  
Dev/Ref, Fixed Range



0.50 0.75 1.00 1.50 2.00  
unitless

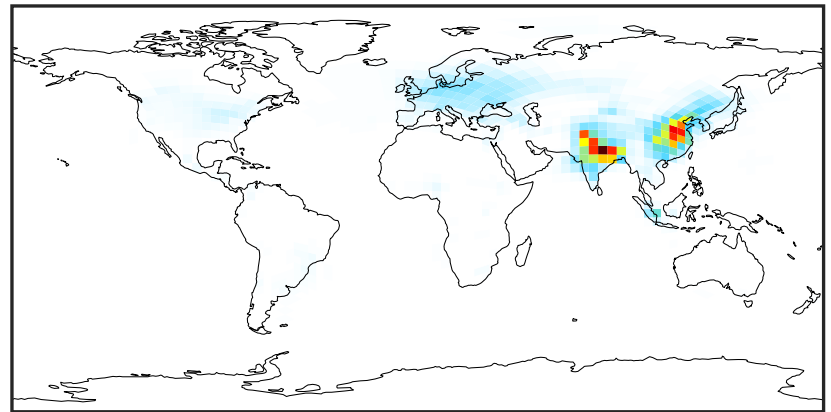
# SpeciesConcVV\_NIT (Oct2019)

14.2.0-rc.2 (Ref)  
c24



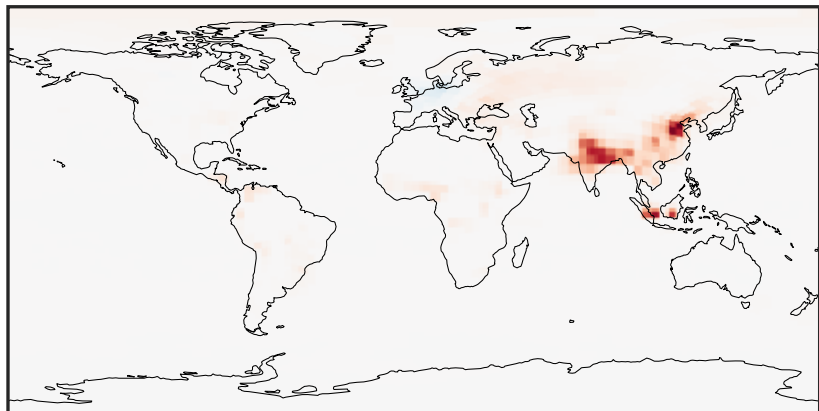
0.00 3.03 6.06 9.08 12.11  
ppb

14.3.0-rc.0 (Dev)  
c24



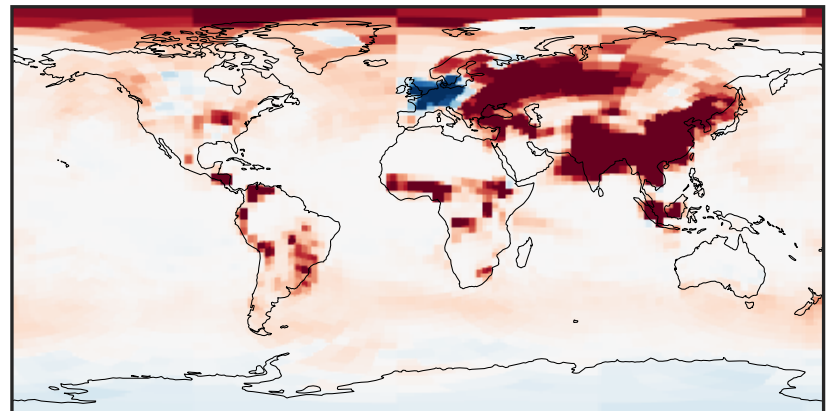
0.00 3.03 6.06 9.08 12.11  
ppb

Difference (1x1.25)  
Dev - Ref, Dynamic Range



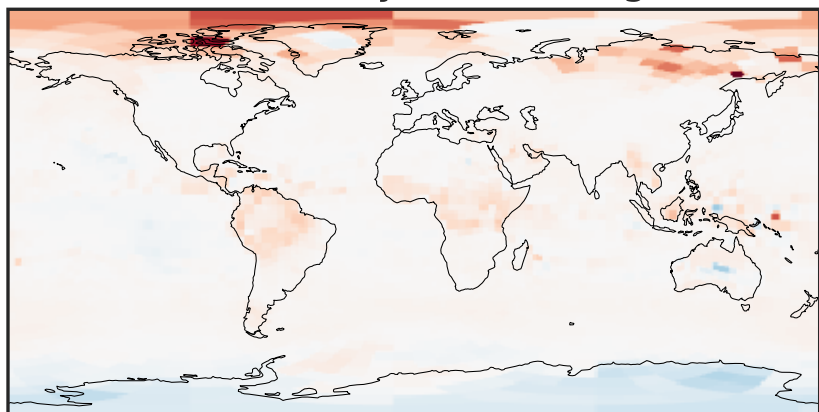
-0.082 -0.041 0.000 0.041 0.082  
ppb

Difference (1x1.25)  
Dev - Ref, Restricted Range [5%,95%]



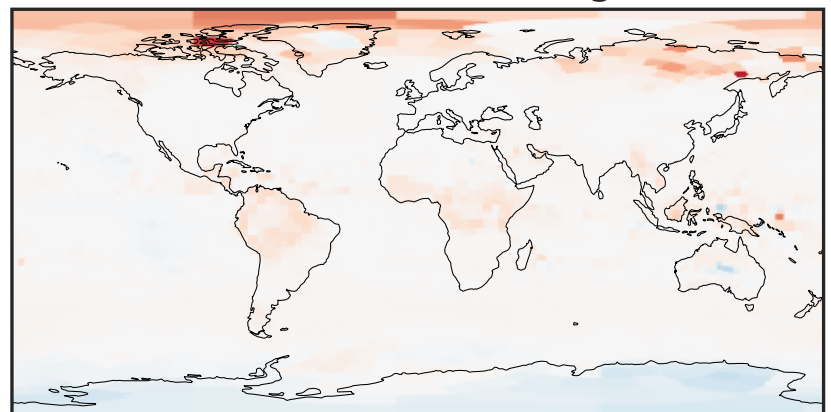
-0.002 0.000 0.002  
ppb

Ratio (1x1.25)  
Dev/Ref, Dynamic Range



0.582 0.791 1.000 1.359 1.718  
unitless

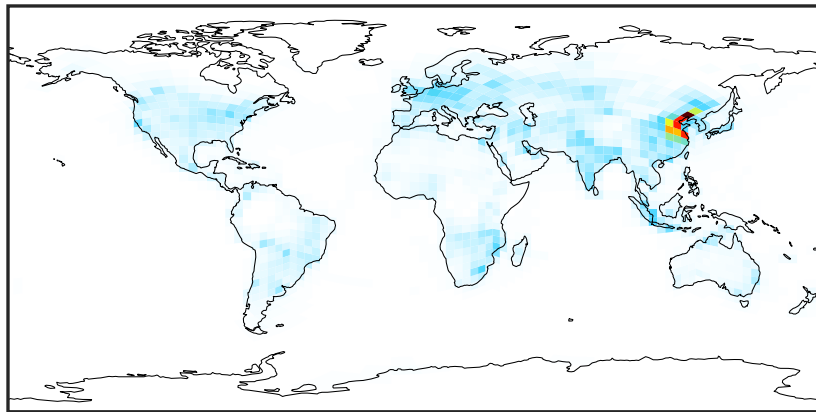
Ratio (1x1.25)  
Dev/Ref, Fixed Range



0.50 0.75 1.00 1.50 2.00  
unitless

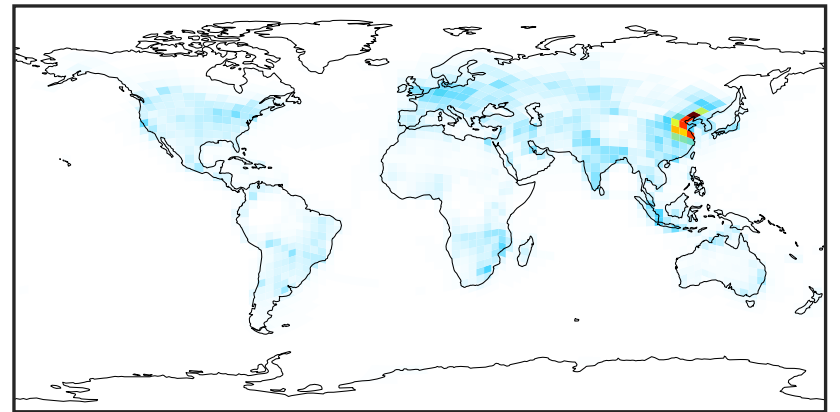
# SpeciesConcVV\_NO (Oct2019)

14.2.0-rc.2 (Ref)  
c24



0.000 0.335 0.671 1.006 1.341  
ppb

14.3.0-rc.0 (Dev)  
c24



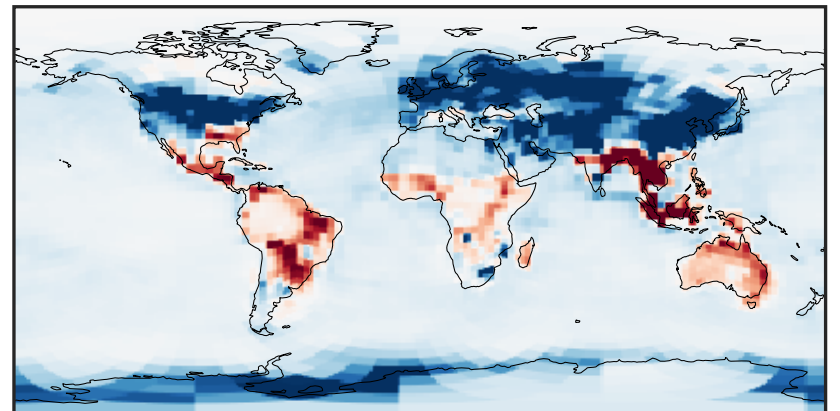
0.000 0.335 0.671 1.006 1.341  
ppb

Difference (1x1.25)  
Dev - Ref, Dynamic Range



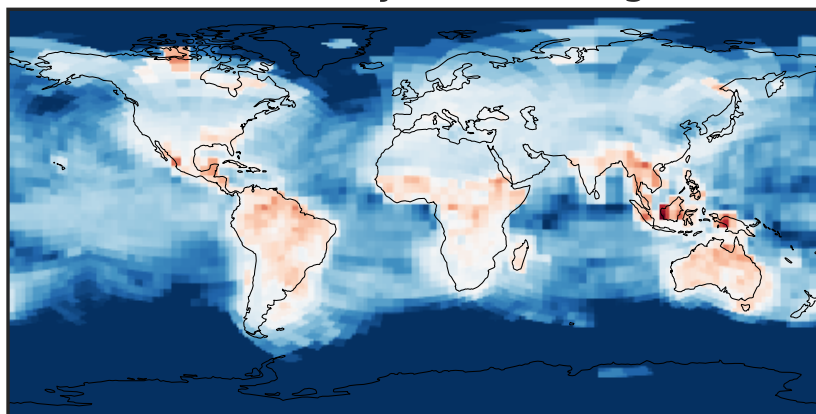
-0.02 0.00 0.02  
ppb

Difference (1x1.25)  
Dev - Ref, Restricted Range [5%,95%]



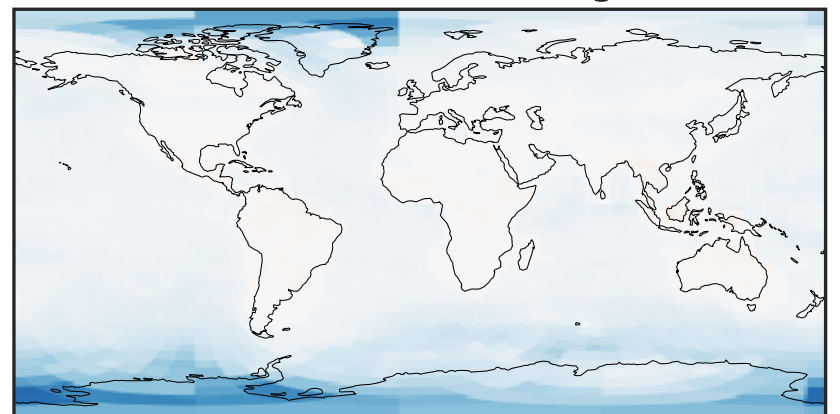
-0.0006 0.0000 0.0006  
ppb

Ratio (1x1.25)  
Dev/Ref, Dynamic Range



0.9377 0.9689 1.0000 1.0332 1.0664  
unitless

Ratio (1x1.25)  
Dev/Ref, Fixed Range

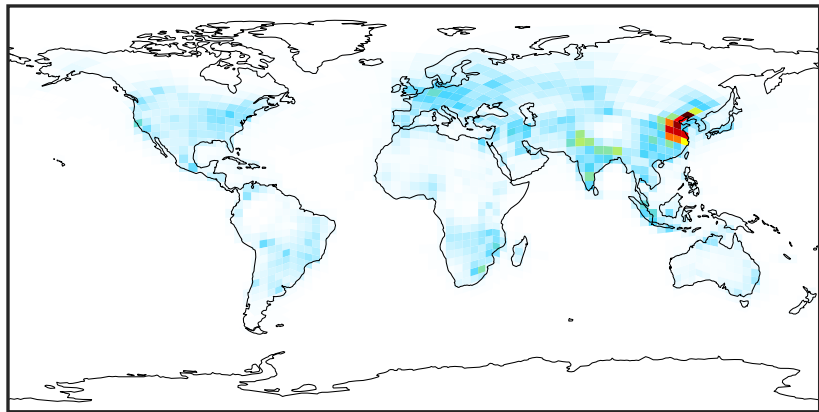


0.50 0.75 1.00 1.50 2.00  
unitless



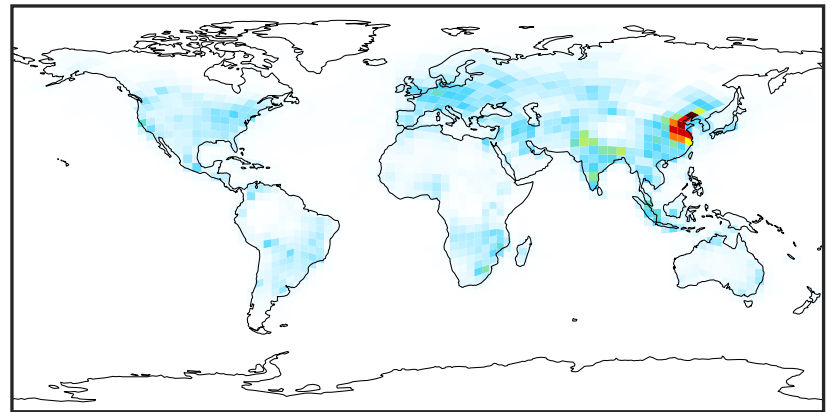
# SpeciesConcVW\_NO2 (Oct2019)

14.2.0-rc.2 (Ref)  
c24



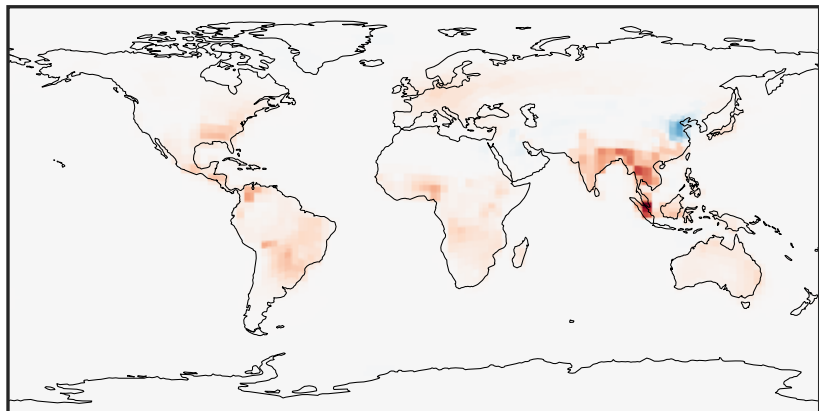
0.00 2.96 5.91 8.87 11.82  
ppb

14.3.0-rc.0 (Dev)  
c24



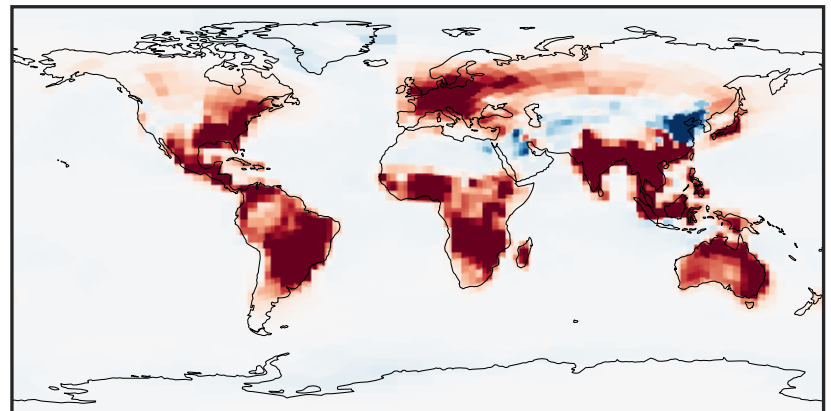
0.00 2.96 5.91 8.87 11.82  
ppb

Difference (1x1.25)  
Dev - Ref, Dynamic Range



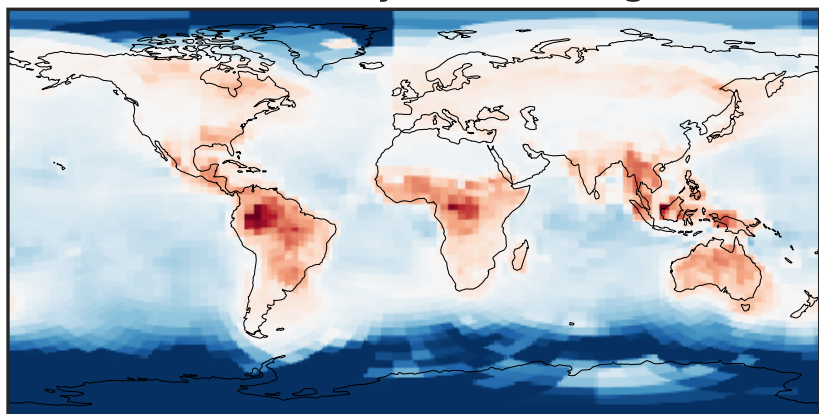
-0.1842 -0.0921 0.0000 0.0921 0.1842  
ppb

Difference (1x1.25)  
Dev - Ref, Restricted Range [5%,95%]



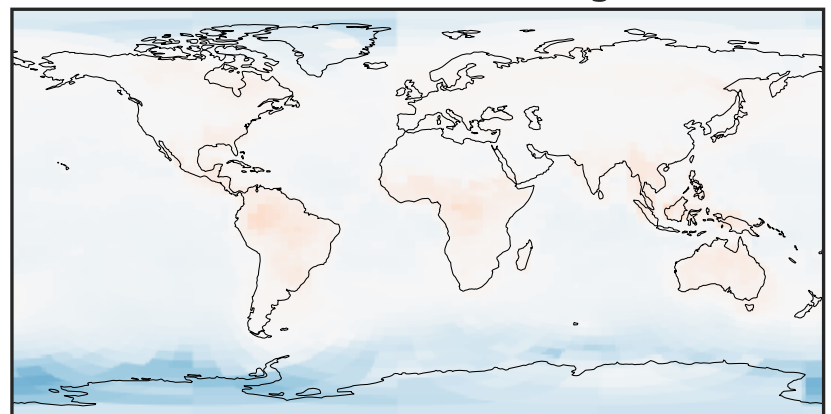
-0.008 0.000 0.008  
ppb

Ratio (1x1.25)  
Dev/Ref, Dynamic Range



0.8861 0.9430 1.0000 1.0643 1.1286  
unitless

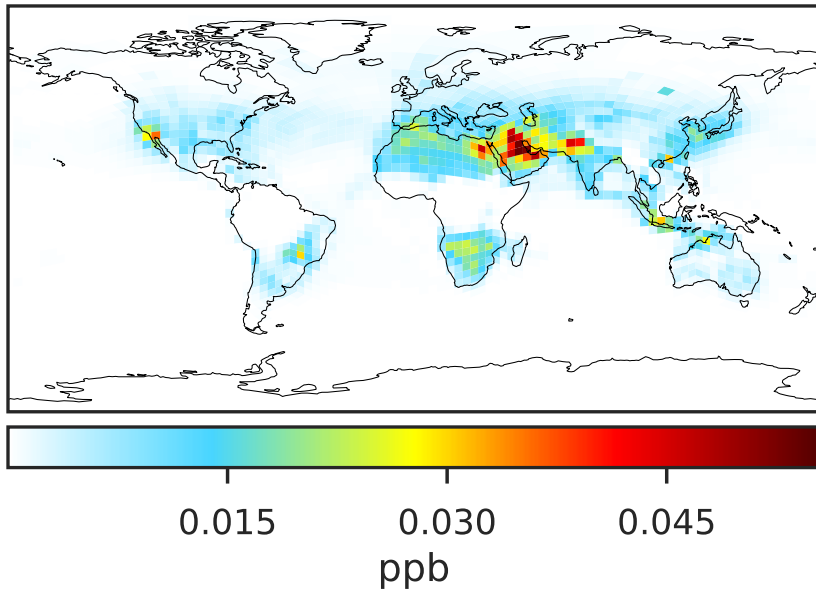
Ratio (1x1.25)  
Dev/Ref, Fixed Range



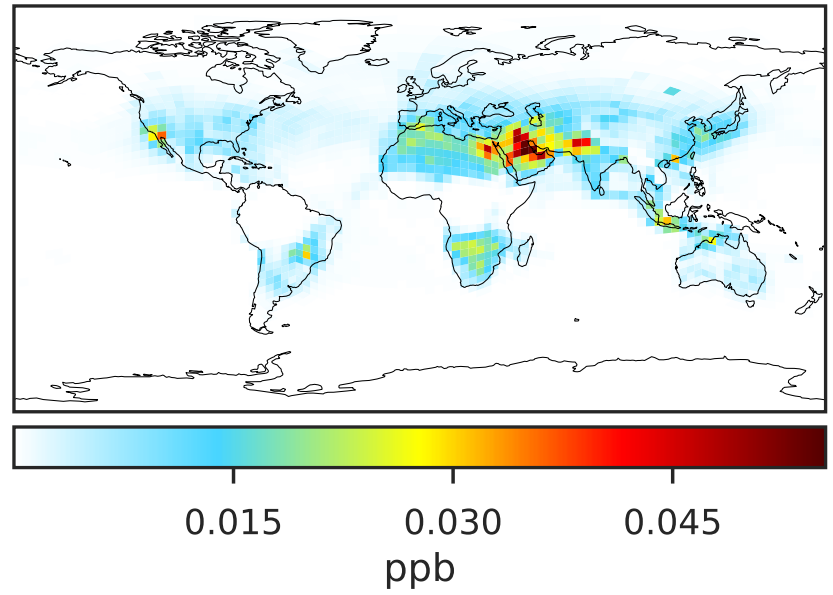
0.50 0.75 1.00 1.50 2.00  
unitless

# SpeciesConcVW\_NO3 (Oct2019)

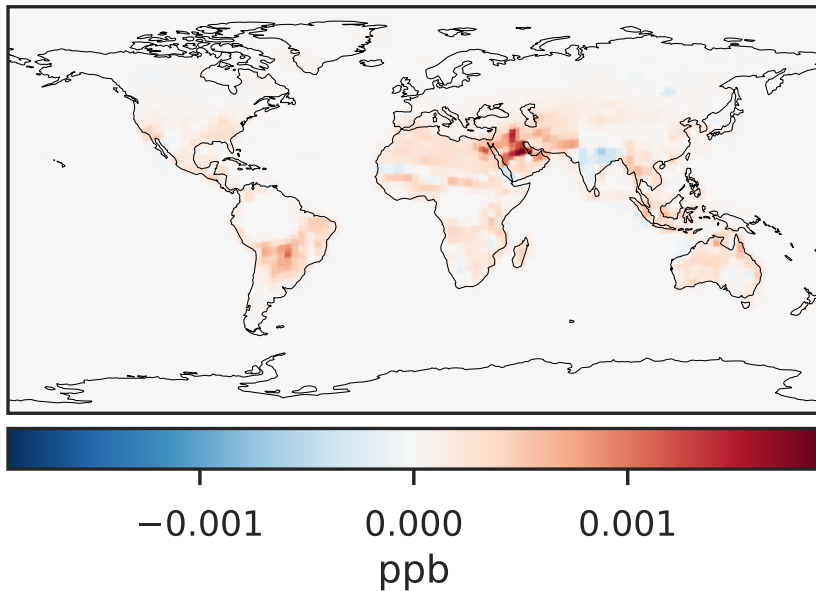
14.2.0-rc.2 (Ref)  
c24



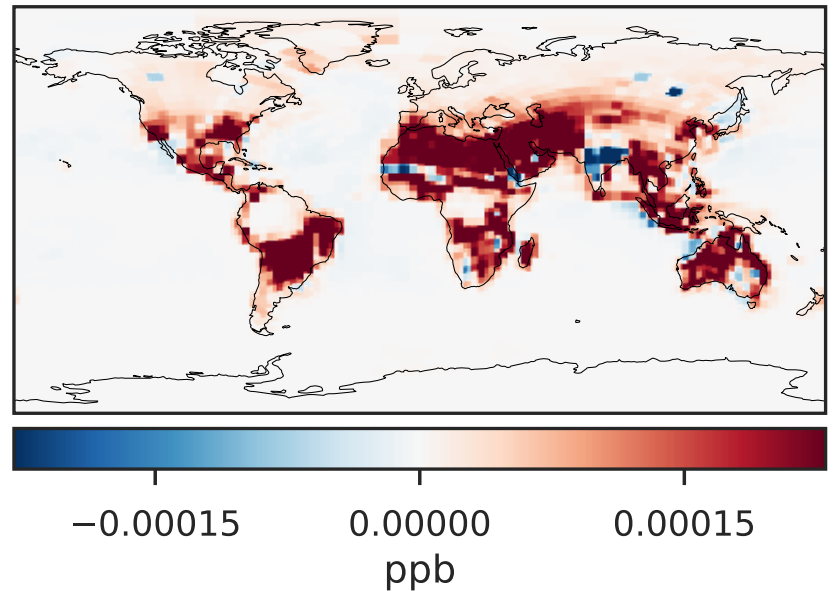
14.3.0-rc.0 (Dev)  
c24



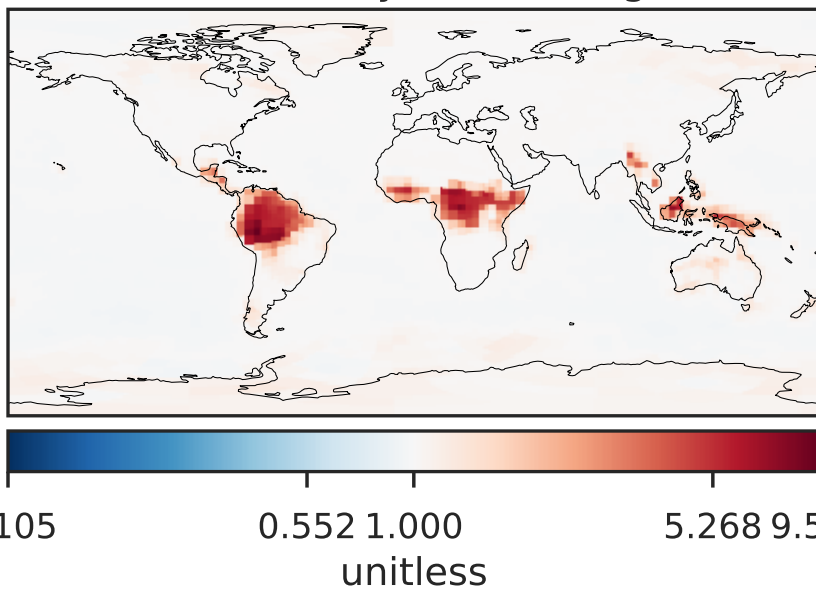
Difference (1x1.25)  
Dev - Ref, Dynamic Range



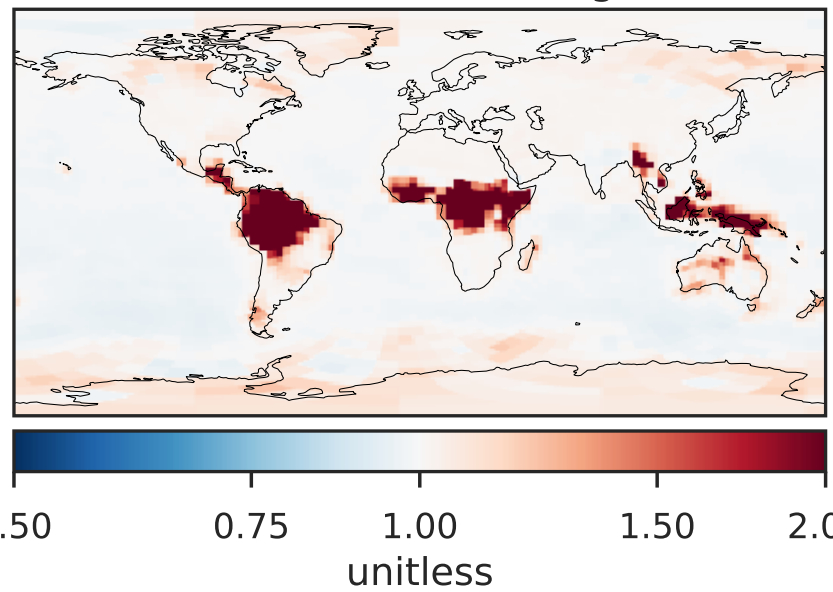
Difference (1x1.25)  
Dev - Ref, Restricted Range [5%,95%]



Ratio (1x1.25)  
Dev/Ref, Dynamic Range

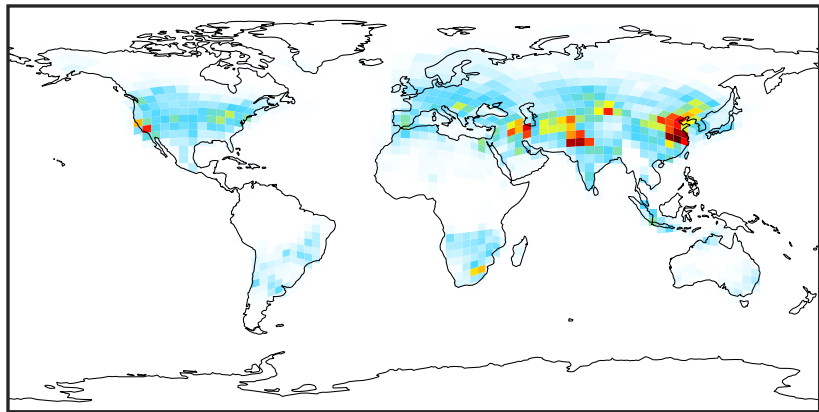


Ratio (1x1.25)  
Dev/Ref, Fixed Range



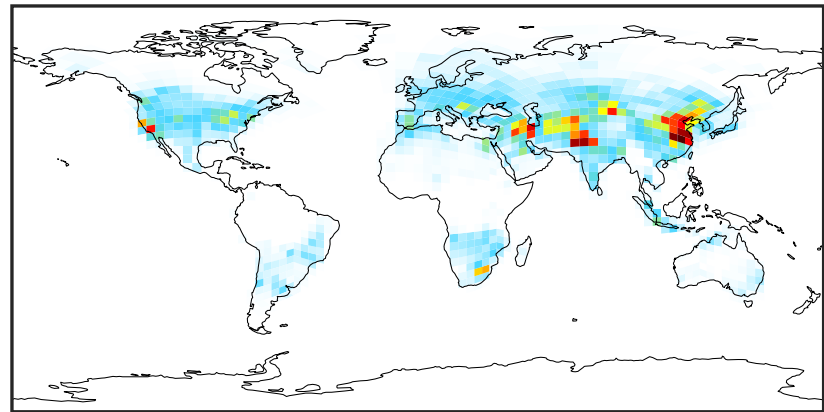
# SpeciesConcVV\_N2O5 (Oct2019)

14.2.0-rc.2 (Ref)  
c24



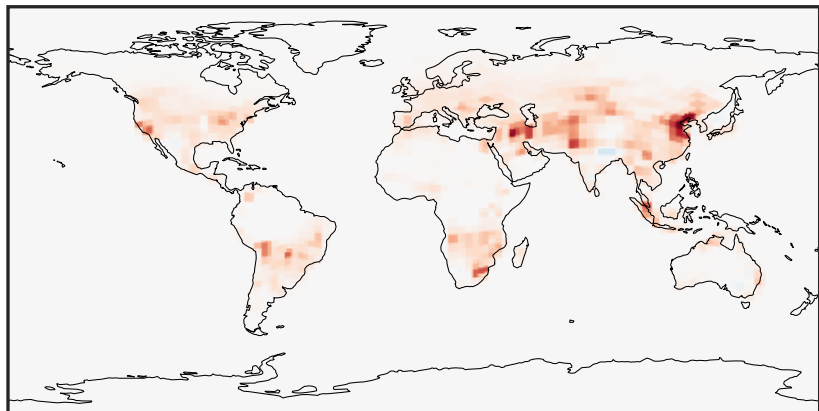
0.0000 0.0597 0.1195 0.1792 0.2389  
ppb

14.3.0-rc.0 (Dev)  
c24



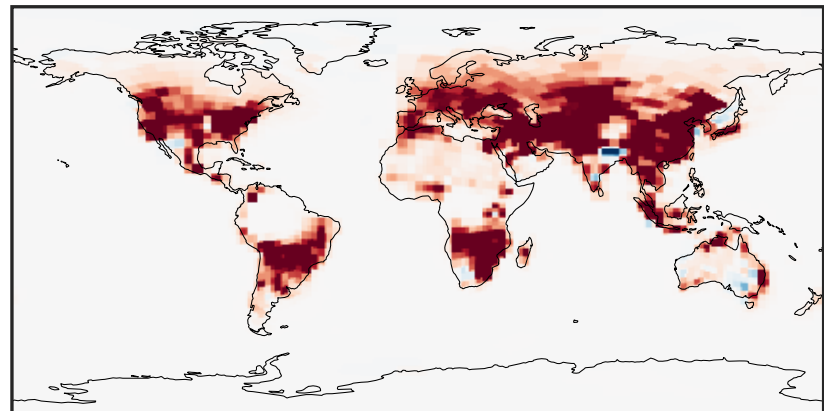
0.0000 0.0597 0.1195 0.1792 0.2389  
ppb

Difference (1x1.25)  
Dev - Ref, Dynamic Range



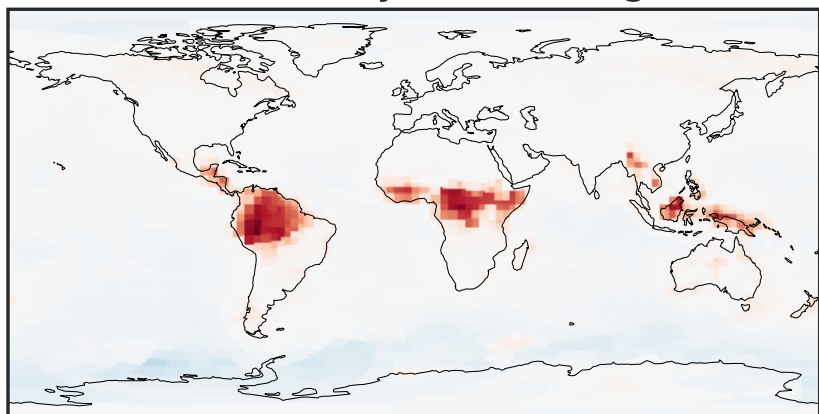
-0.0025 0.0000 0.0025  
ppb

Difference (1x1.25)  
Dev - Ref, Restricted Range [5%,95%]



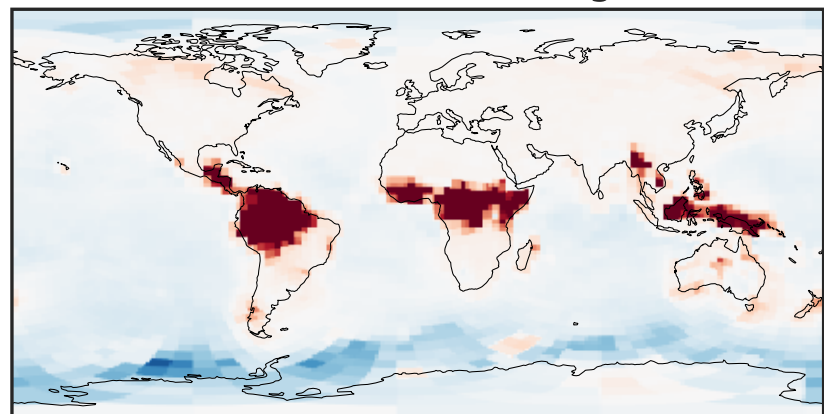
-0.0004 0.0000 0.0004  
ppb

Ratio (1x1.25)  
Dev/Ref, Dynamic Range



1e-01 1 10  
unitless

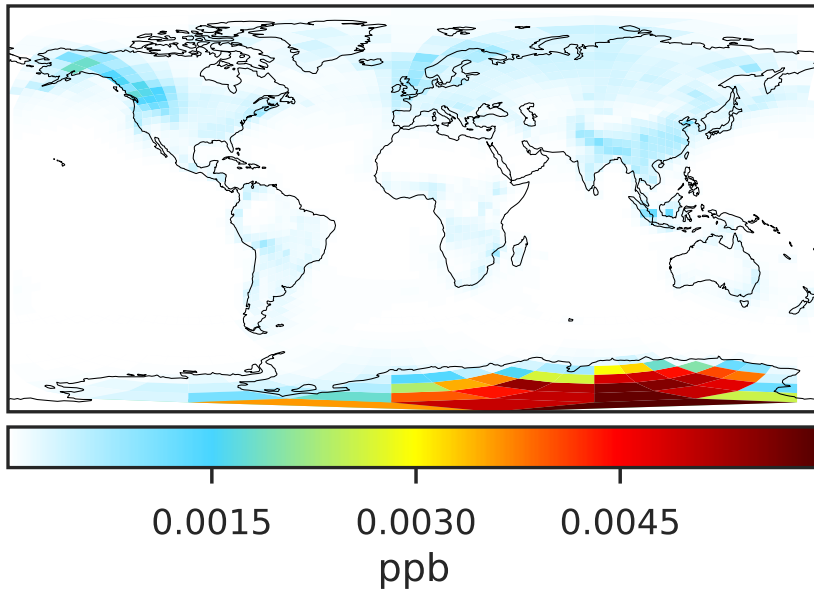
Ratio (1x1.25)  
Dev/Ref, Fixed Range



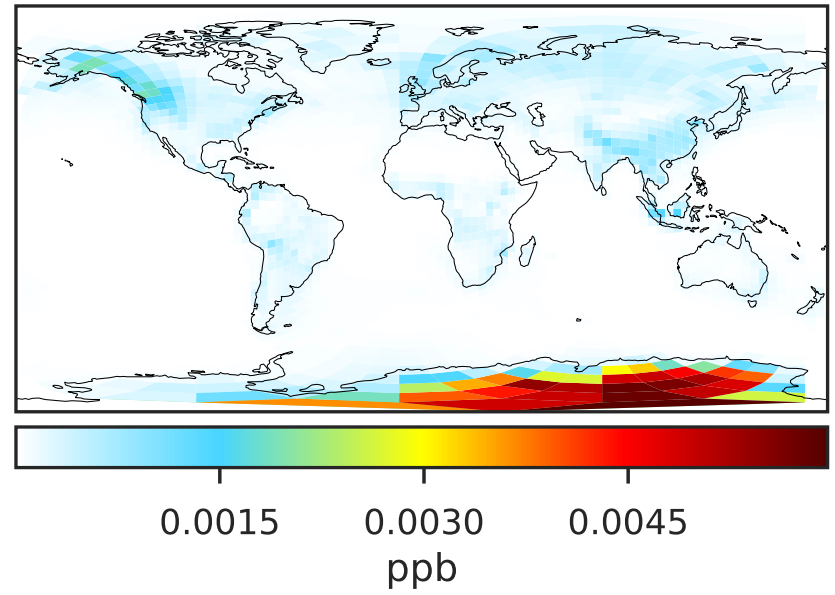
0.50 0.75 1.00 1.50 2.00  
unitless

# SpeciesConcVW\_MPN (Oct2019)

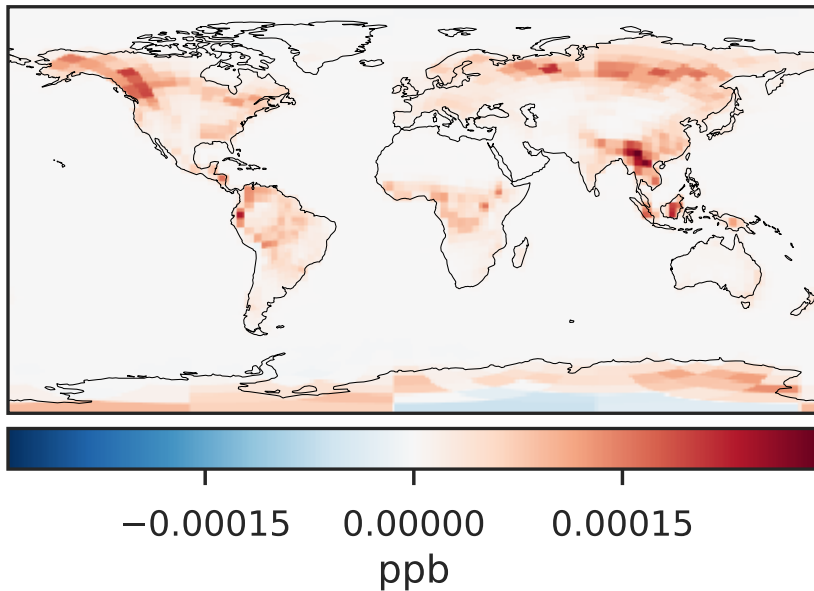
14.2.0-rc.2 (Ref)  
c24



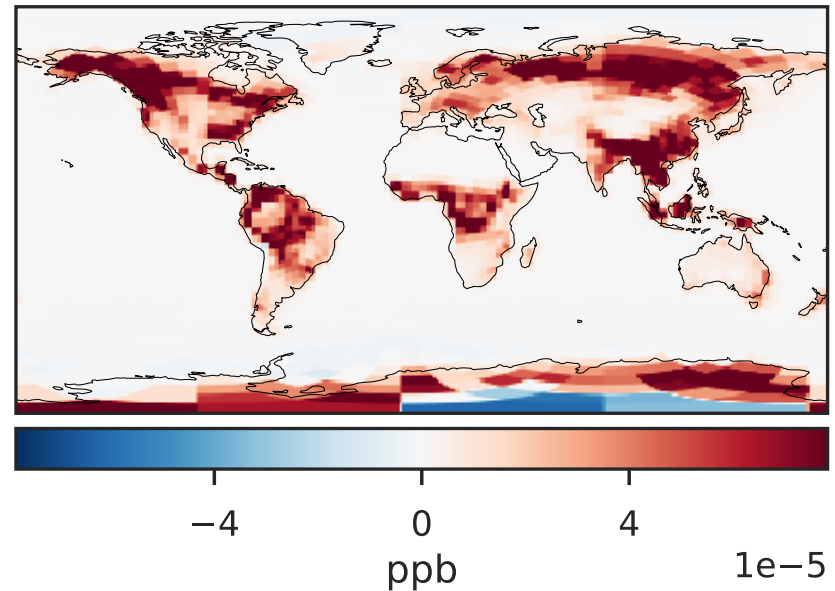
14.3.0-rc.0 (Dev)  
c24



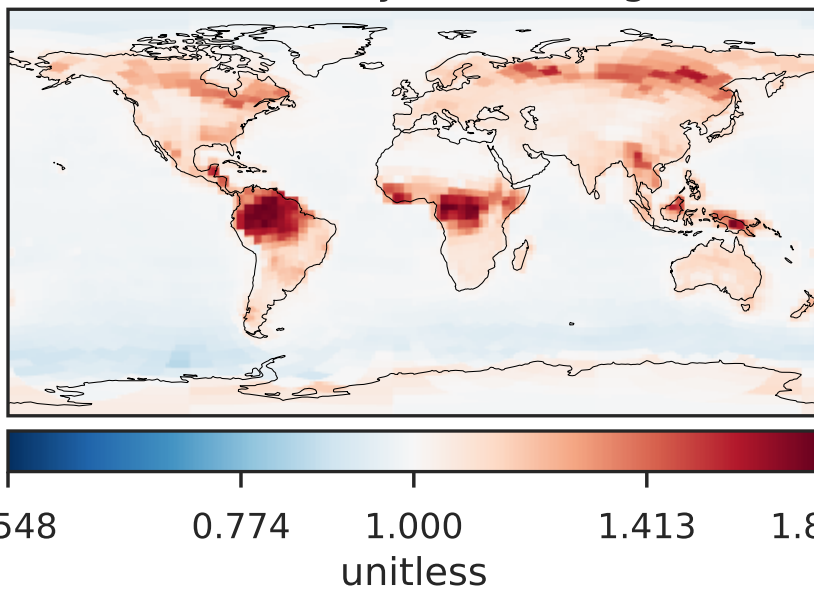
Difference (1x1.25)  
Dev - Ref, Dynamic Range



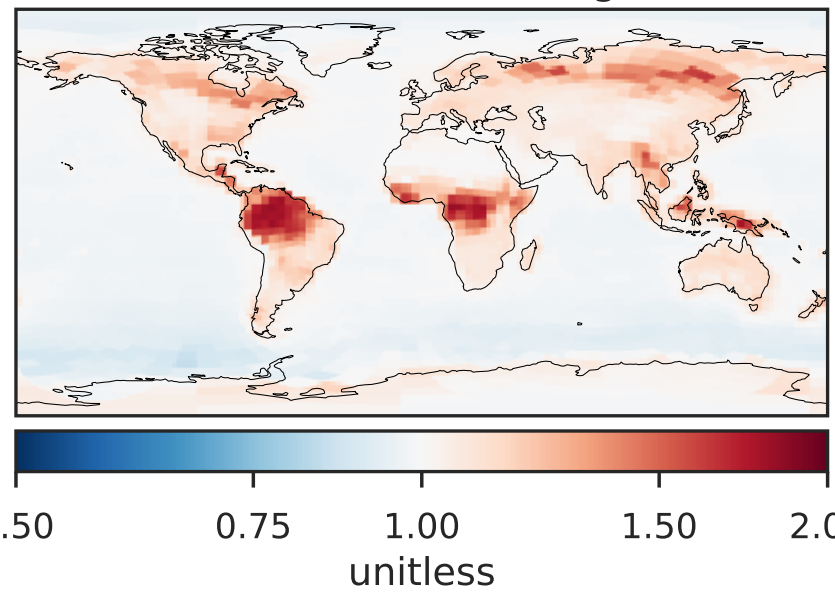
Difference (1x1.25)  
Dev - Ref, Restricted Range [5%,95%]



Ratio (1x1.25)  
Dev/Ref, Dynamic Range

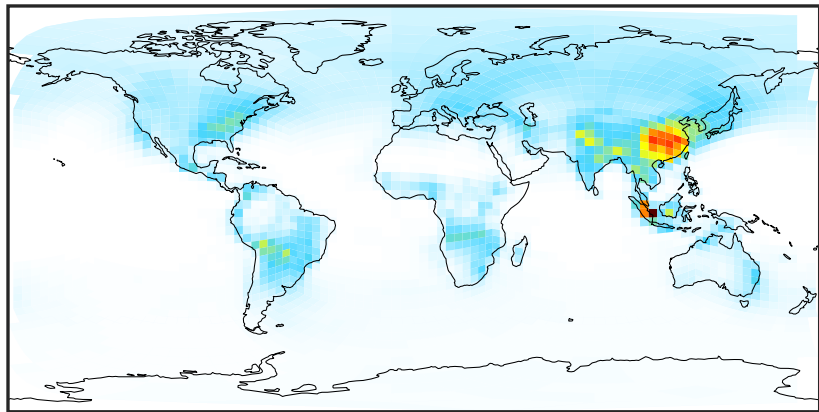


Ratio (1x1.25)  
Dev/Ref, Fixed Range



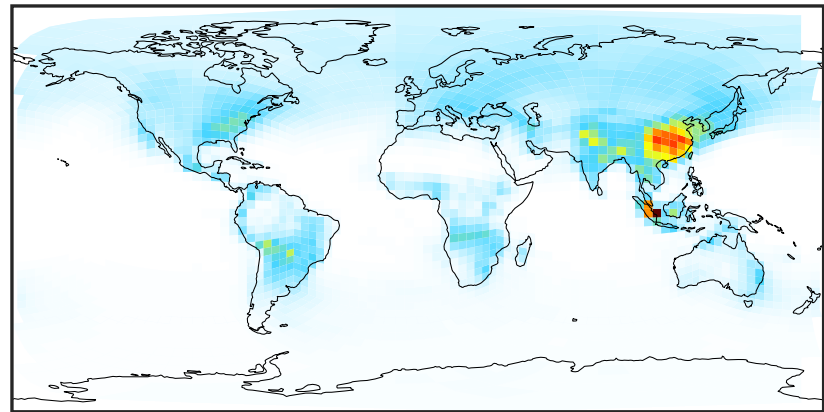
# SpeciesConcVV\_PAN (Oct2019)

14.2.0-rc.2 (Ref)  
c24



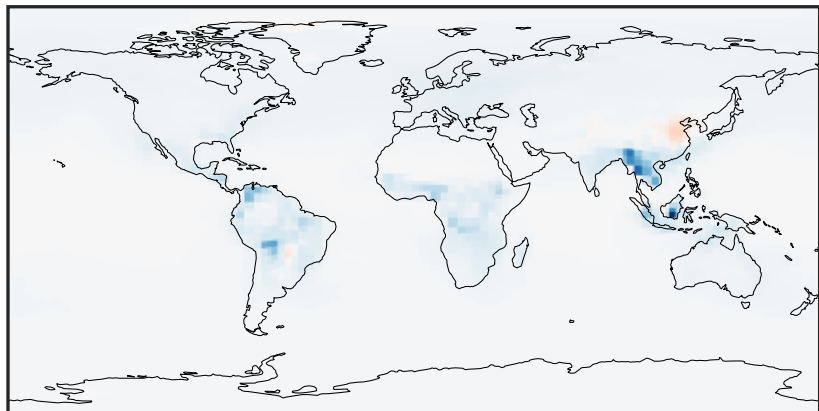
0.000 0.347 0.693 1.039 1.386  
ppb

14.3.0-rc.0 (Dev)  
c24



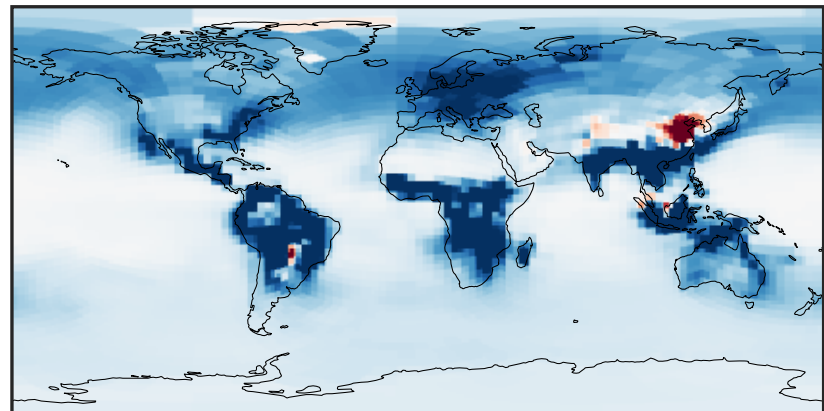
0.000 0.347 0.693 1.039 1.386  
ppb

Difference (1x1.25)  
Dev - Ref, Dynamic Range



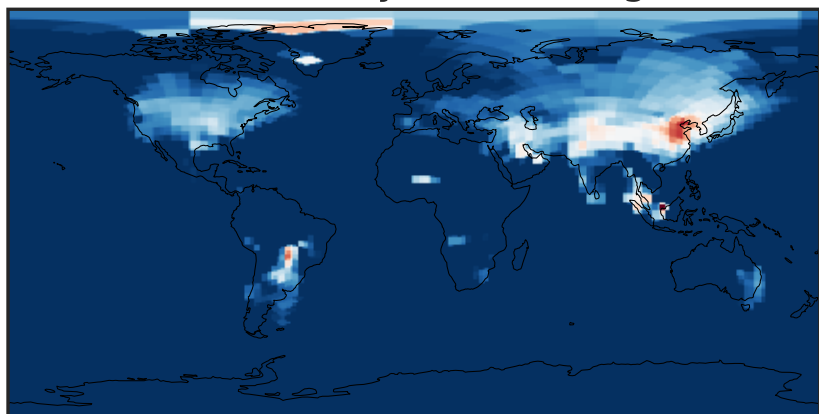
-0.0630 -0.0315 0.0000 0.0315 0.0630  
ppb

Difference (1x1.25)  
Dev - Ref, Restricted Range [5%,95%]



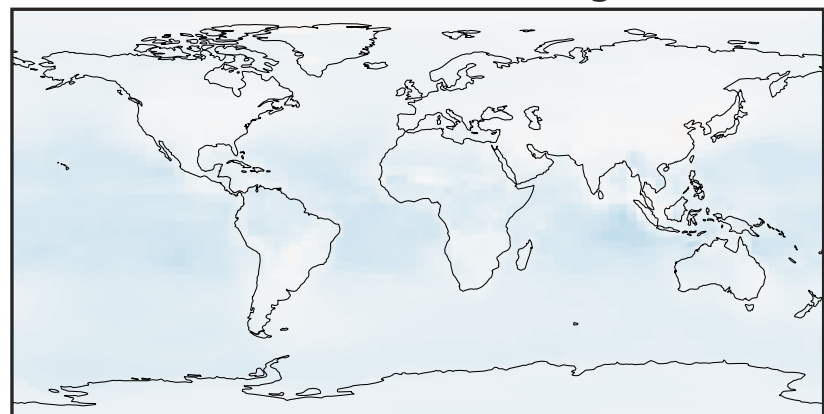
-0.003 0.000 0.003  
ppb

Ratio (1x1.25)  
Dev/Ref, Dynamic Range



0.97342 0.98671 1.00000 1.01365 1.02731  
unitless

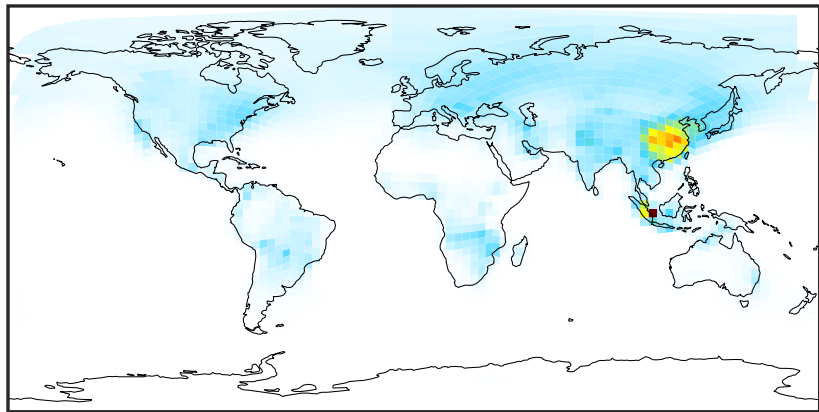
Ratio (1x1.25)  
Dev/Ref, Fixed Range



0.50 0.75 1.00 1.50 2.00  
unitless

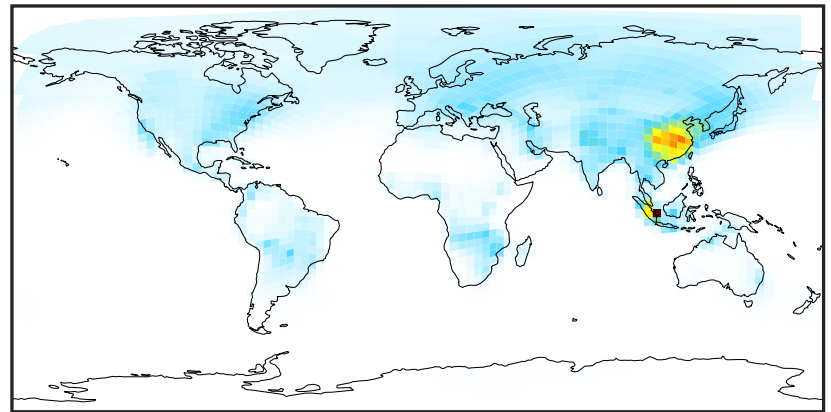
# SpeciesConcVV\_PPN (Oct2019)

14.2.0-rc.2 (Ref)  
c24



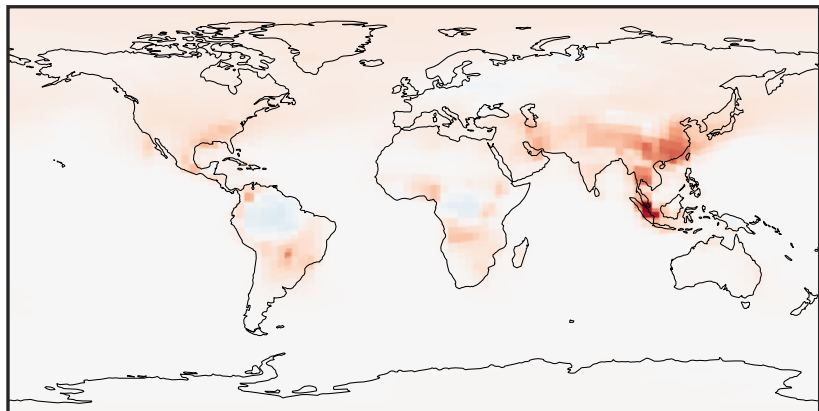
0.0000 0.1085 0.2169 0.3254 0.4338  
ppb

14.3.0-rc.0 (Dev)  
c24



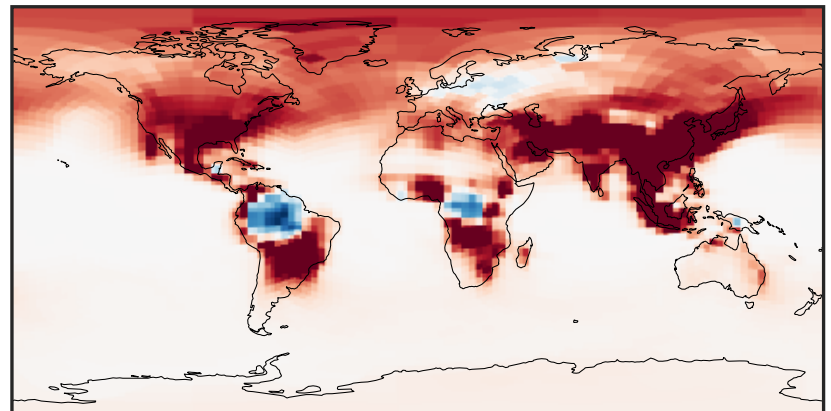
0.0000 0.1085 0.2169 0.3254 0.4338  
ppb

Difference (1x1.25)  
Dev - Ref, Dynamic Range



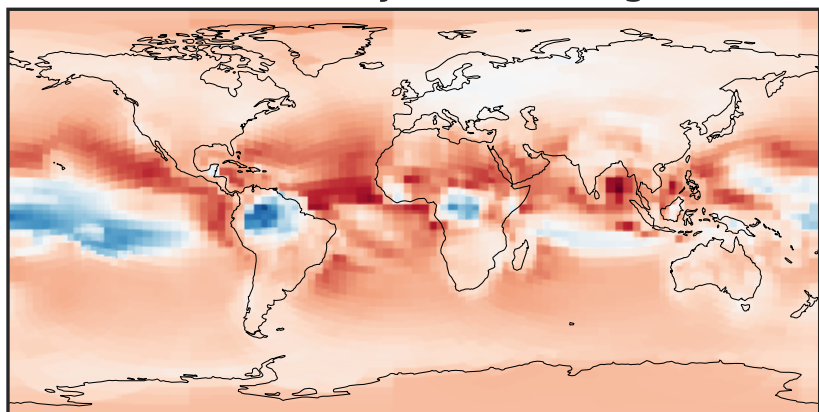
-0.008 0.000 0.008  
ppb

Difference (1x1.25)  
Dev - Ref, Restricted Range [5%,95%]



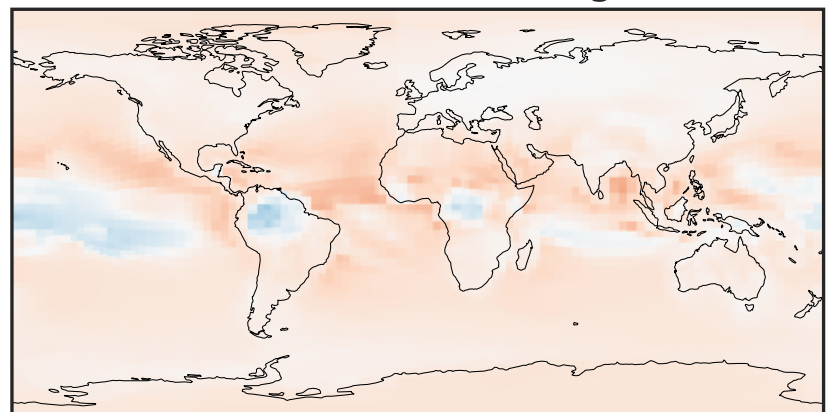
-0.001 0.000 0.001  
ppb

Ratio (1x1.25)  
Dev/Ref, Dynamic Range



0.7629 0.8815 1.0000 1.1554 1.3107  
unitless

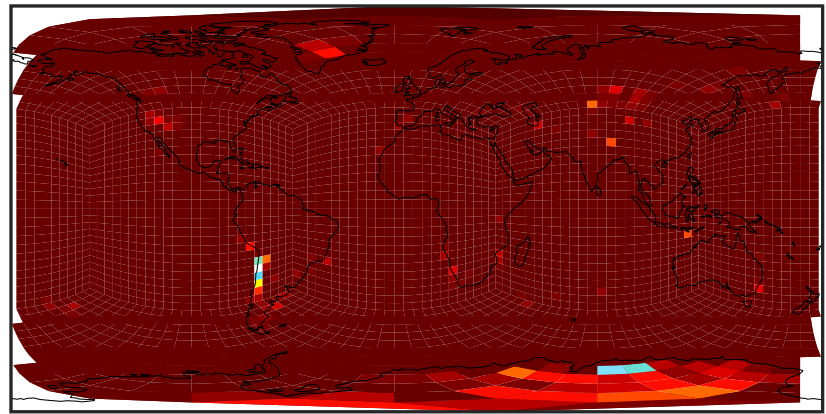
Ratio (1x1.25)  
Dev/Ref, Fixed Range



0.50 0.75 1.00 1.50 2.00  
unitless

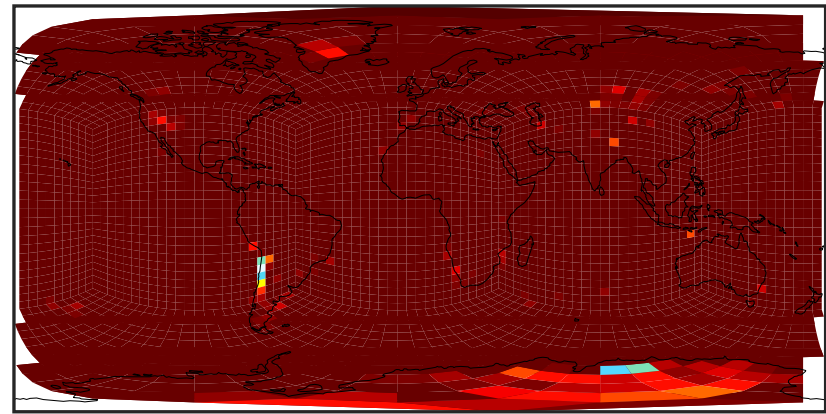
# SpeciesConcVW\_N2O (Oct2019)

14.2.0-rc.2 (Ref)  
c24



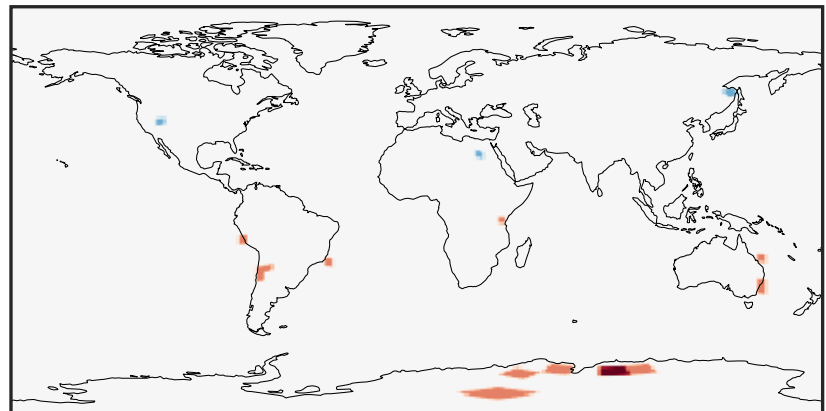
0.0000 0.0003 0.0006 0.0009  
ppb +3.30502e2

14.3.0-rc.0 (Dev)  
c24



0.0000 0.0003 0.0006 0.0009  
ppb +3.30502e2

Difference (1x1.25)  
Dev - Ref, Dynamic Range



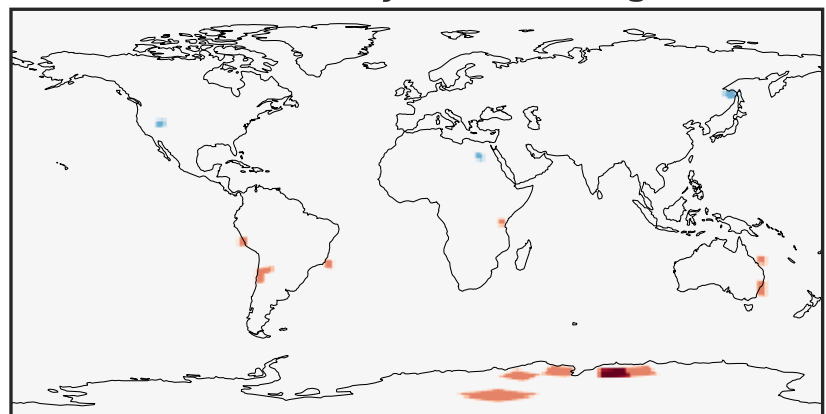
-4 0 4  
ppb 1e-5

Difference (1x1.25)  
Dev - Ref, Restricted Range [5%,95%]



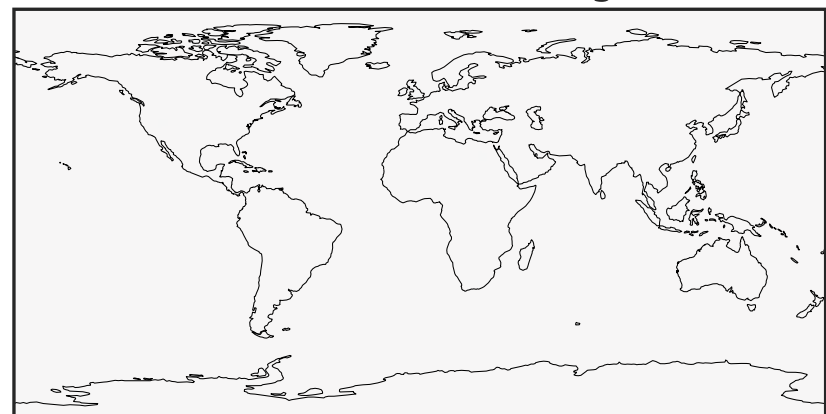
-1.0 -0.5 0.0 0.5 1.0  
ppb

Ratio (1x1.25)  
Dev/Ref, Dynamic Range



0.9999998153 1.0000000000 1.00000018470.50  
unitless

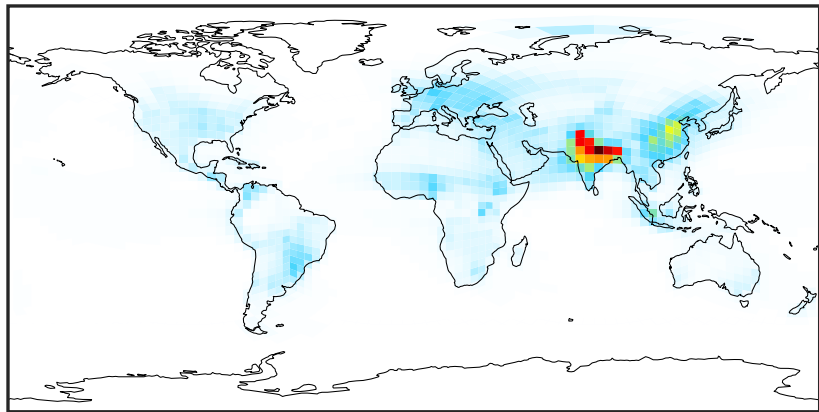
Ratio (1x1.25)  
Dev/Ref, Fixed Range



0.75 1.00 1.50 2.00  
unitless

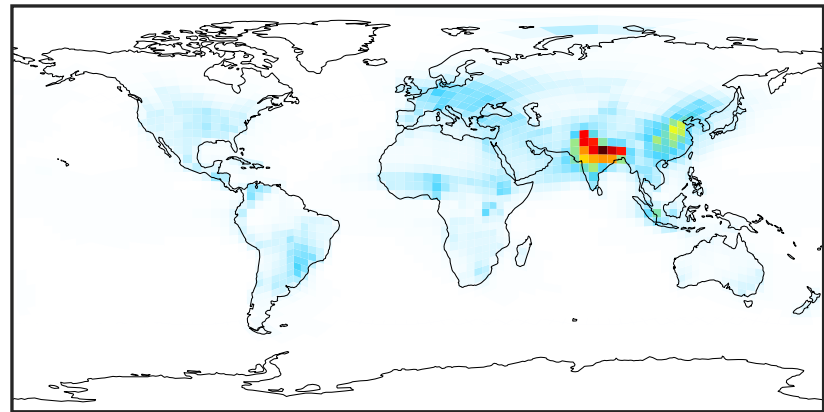
# SpeciesConcVV\_NHx (Oct2019)

14.2.0-rc.2 (Ref)  
c24



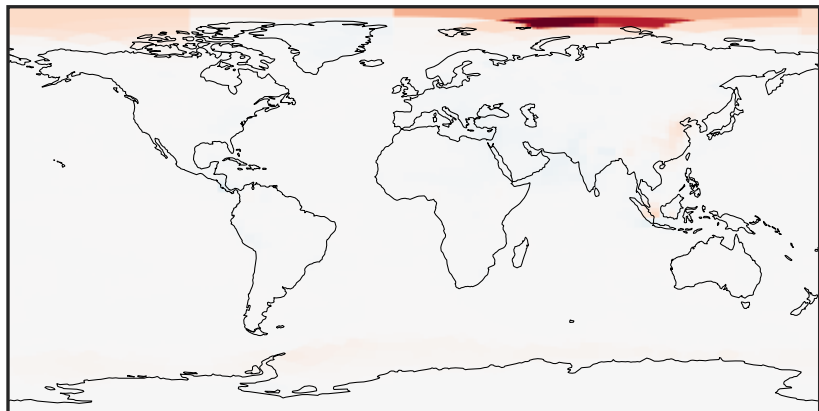
0.01 10.58 21.16 31.73 42.31  
ppb

14.3.0-rc.0 (Dev)  
c24



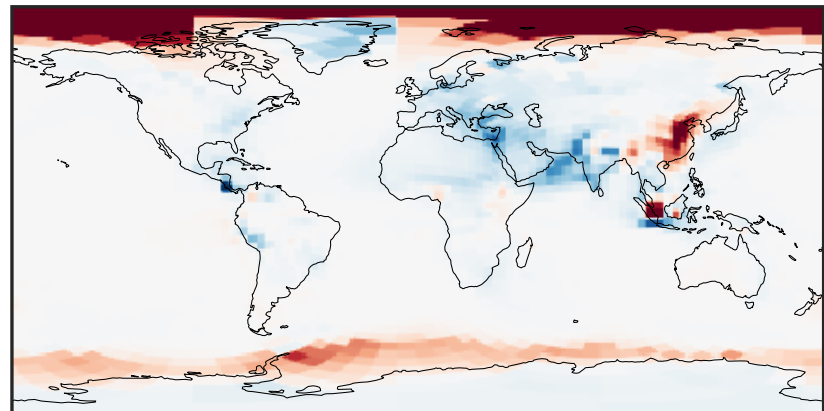
0.01 10.58 21.16 31.73 42.31  
ppb

Difference (1x1.25)  
Dev - Ref, Dynamic Range



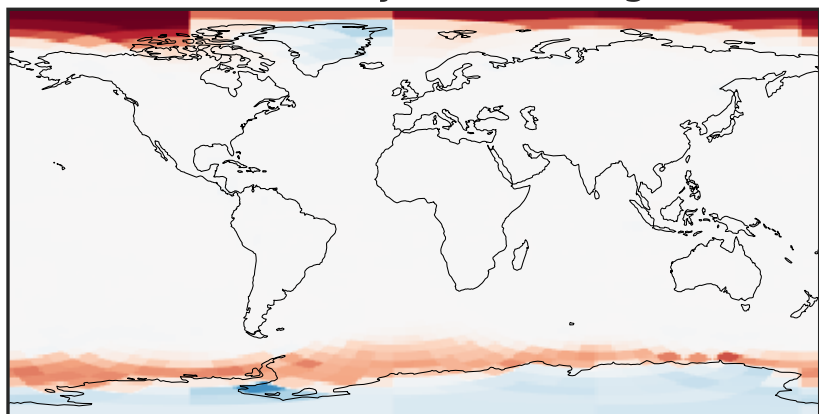
-0.2349 -0.1174 0.0000 0.1174 0.2349  
ppb

Difference (1x1.25)  
Dev - Ref, Restricted Range [5%,95%]



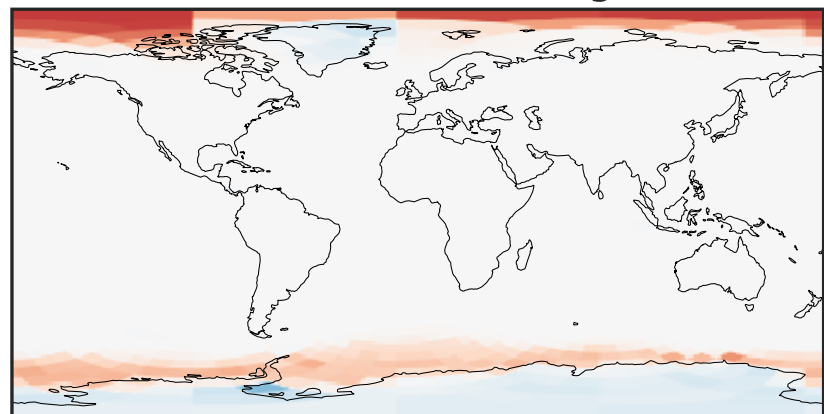
-0.01 0.00 0.01  
ppb

Ratio (1x1.25)  
Dev/Ref, Dynamic Range



0.615 0.807 1.000 1.313 1.627  
unitless

Ratio (1x1.25)  
Dev/Ref, Fixed Range

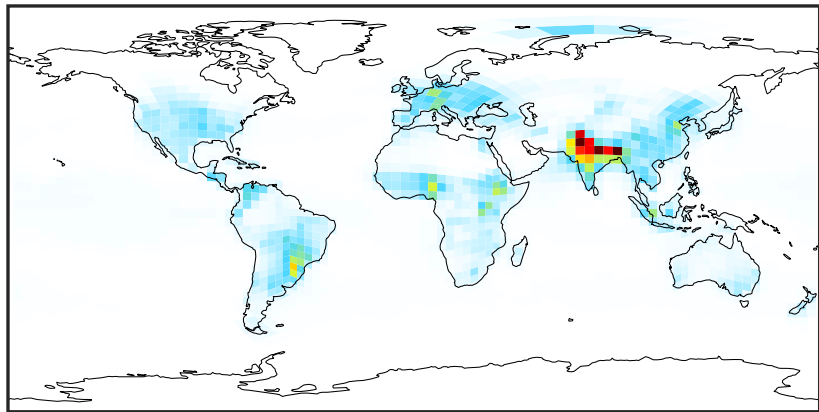


0.50 0.75 1.00 1.50 2.00  
unitless



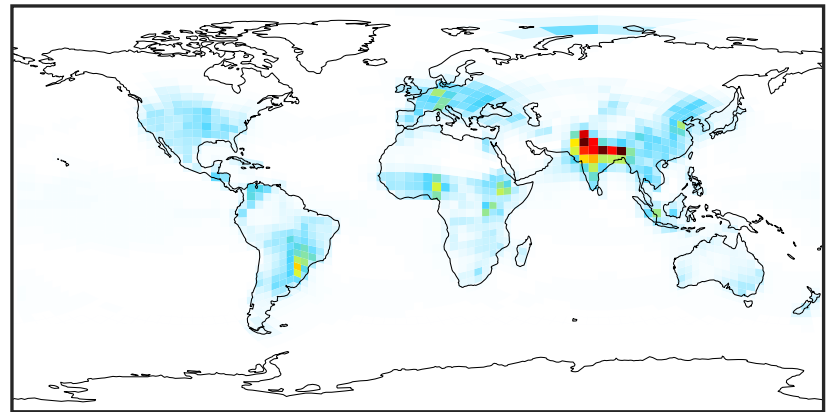
# SpeciesConcVV\_NH3 (Oct2019)

14.2.0-rc.2 (Ref)  
c24



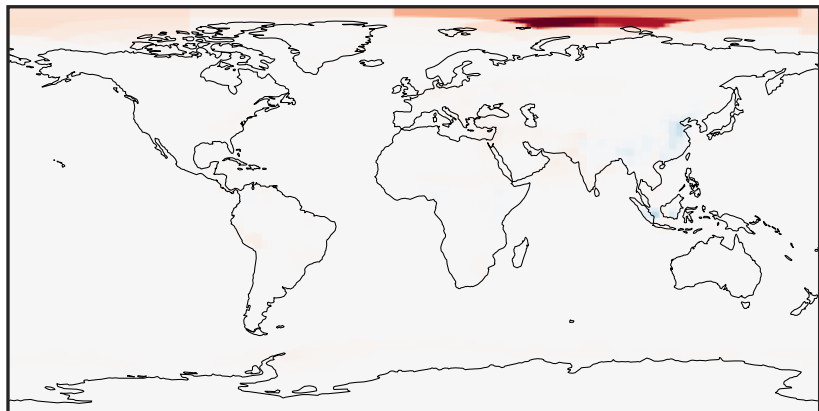
0.00 4.57 9.14 13.71 18.28  
ppb

14.3.0-rc.0 (Dev)  
c24



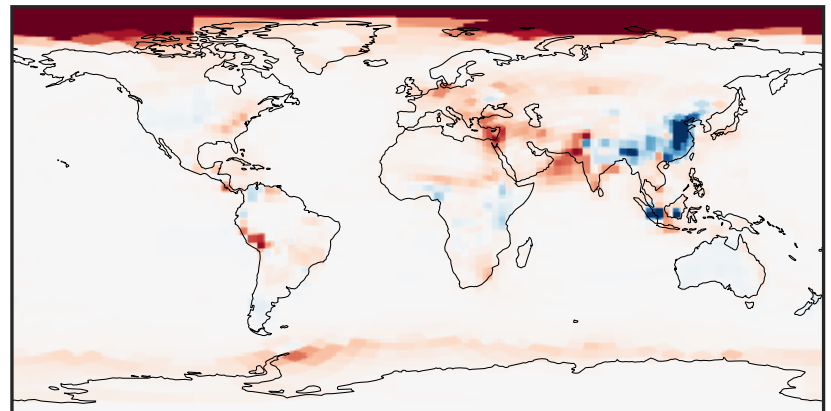
0.00 4.57 9.14 13.71 18.28  
ppb

Difference (1x1.25)  
Dev - Ref, Dynamic Range



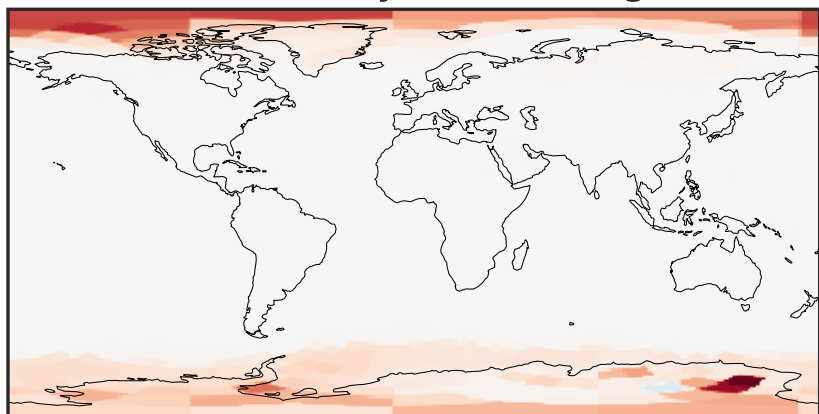
-0.2347 -0.1174 0.0000 0.1174 0.2347  
ppb

Difference (1x1.25)  
Dev - Ref, Restricted Range [5%,95%]



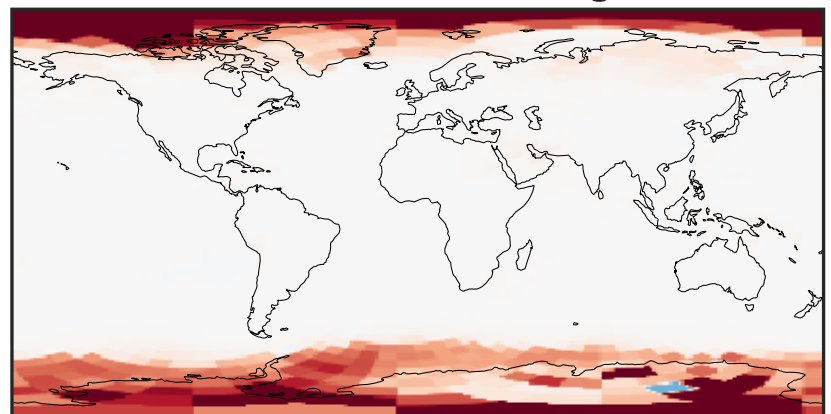
-0.01 0.00 0.01  
ppb

Ratio (1x1.25)  
Dev/Ref, Dynamic Range



1e-01 1 10  
unitless

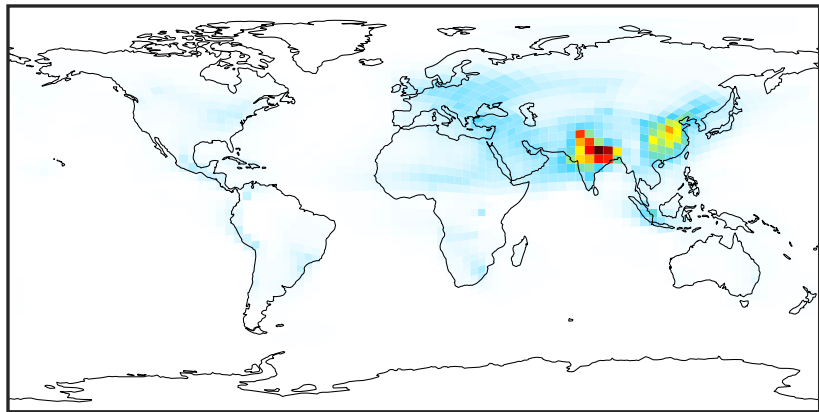
Ratio (1x1.25)  
Dev/Ref, Fixed Range



0.50 0.75 1.00 1.50 2.00  
unitless

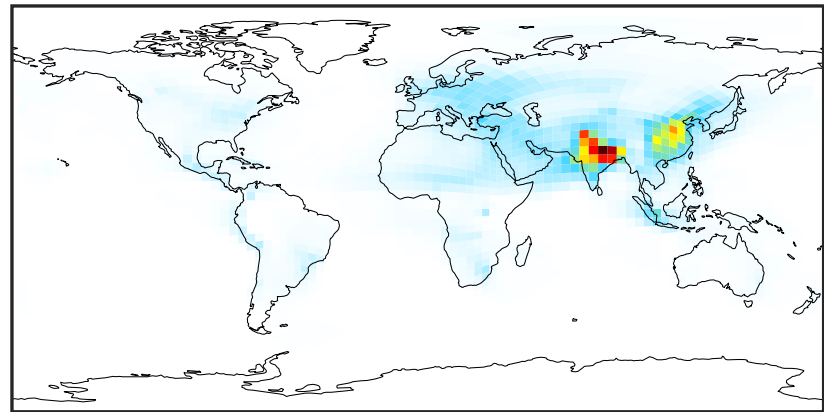
# SpeciesConcVV\_NH4 (Oct2019)

14.2.0-rc.2 (Ref)  
c24



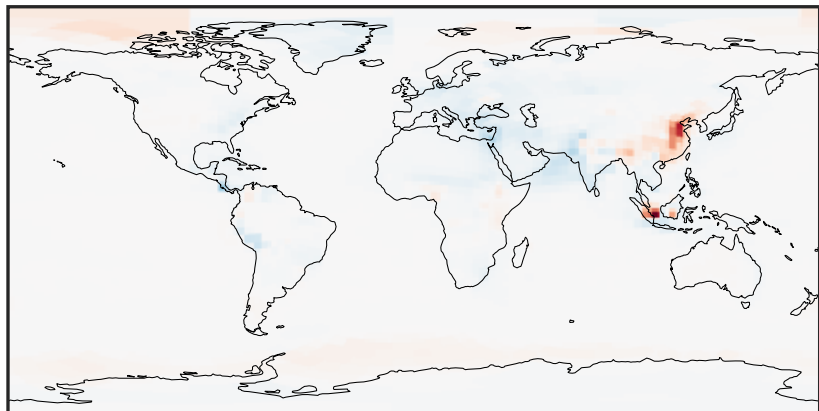
0.00 6.16 12.33 18.49 24.65  
ppb

14.3.0-rc.0 (Dev)  
c24



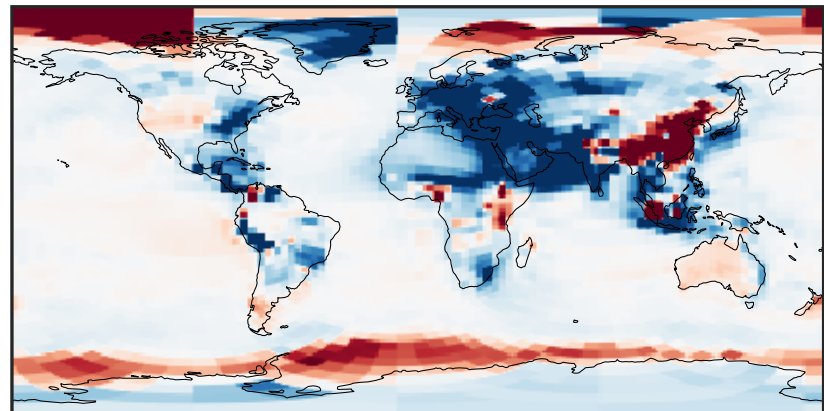
0.00 6.16 12.33 18.49 24.65  
ppb

Difference (1x1.25)  
Dev - Ref, Dynamic Range



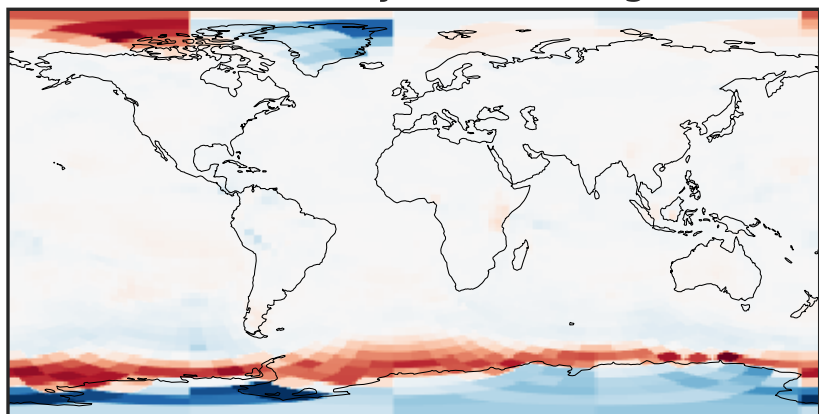
-0.1051 -0.0525 0.0000 0.0525 0.1051  
ppb

Difference (1x1.25)  
Dev - Ref, Restricted Range [5%,95%]



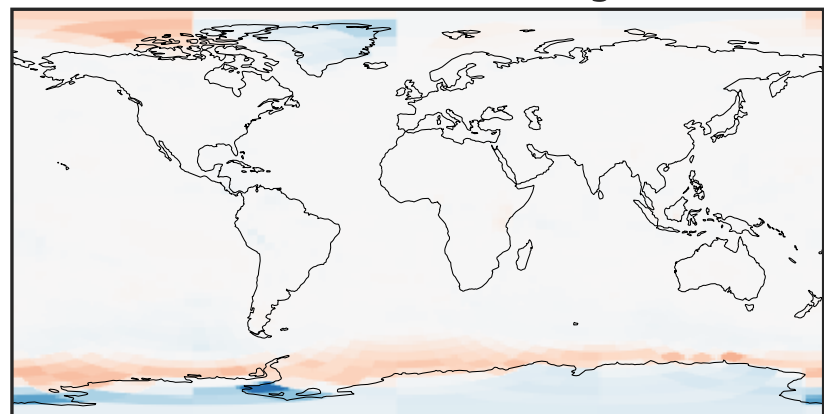
-0.003 0.000 0.003  
ppb

Ratio (1x1.25)  
Dev/Ref, Dynamic Range



0.7852 0.8926 1.0000 1.1368 1.2735  
unitless

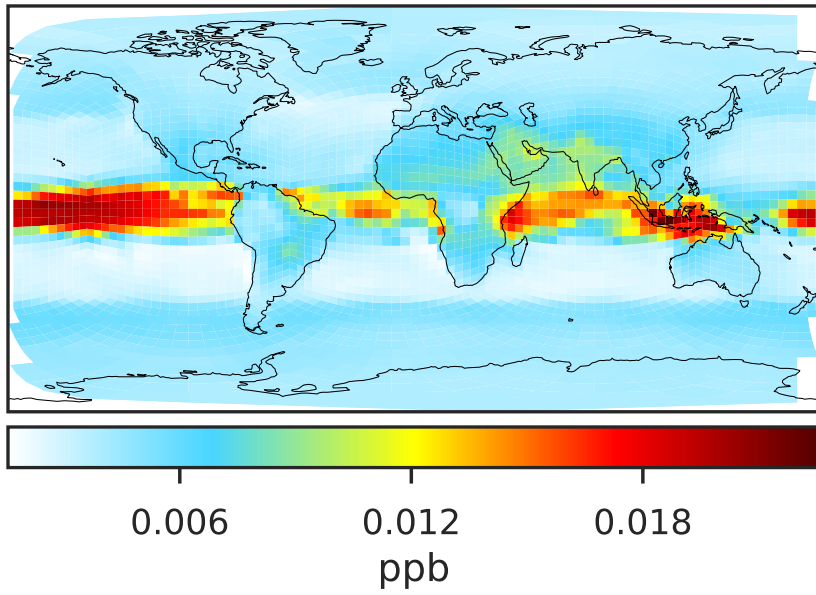
Ratio (1x1.25)  
Dev/Ref, Fixed Range



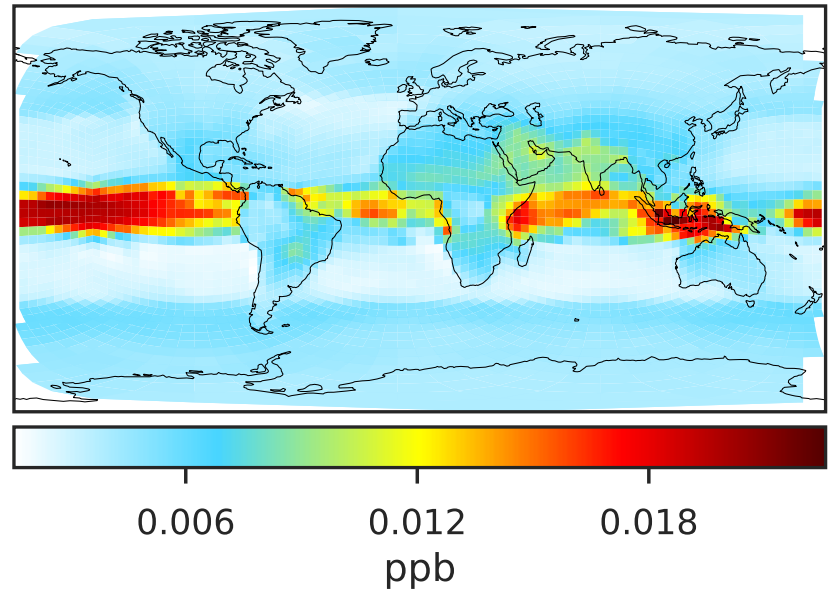
0.50 0.75 1.00 1.50 2.00  
unitless

# SpeciesConcVV\_MENO3 (Oct2019)

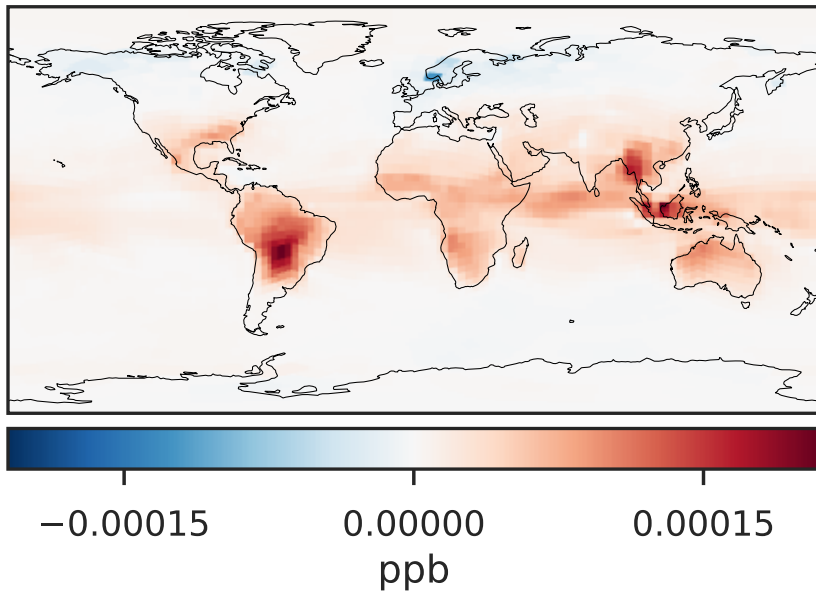
14.2.0-rc.2 (Ref)  
c24



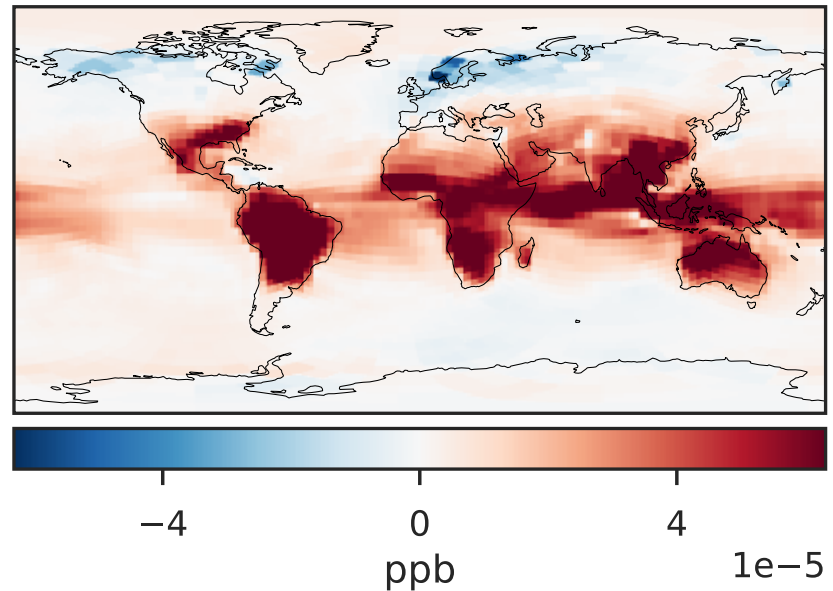
14.3.0-rc.0 (Dev)  
c24



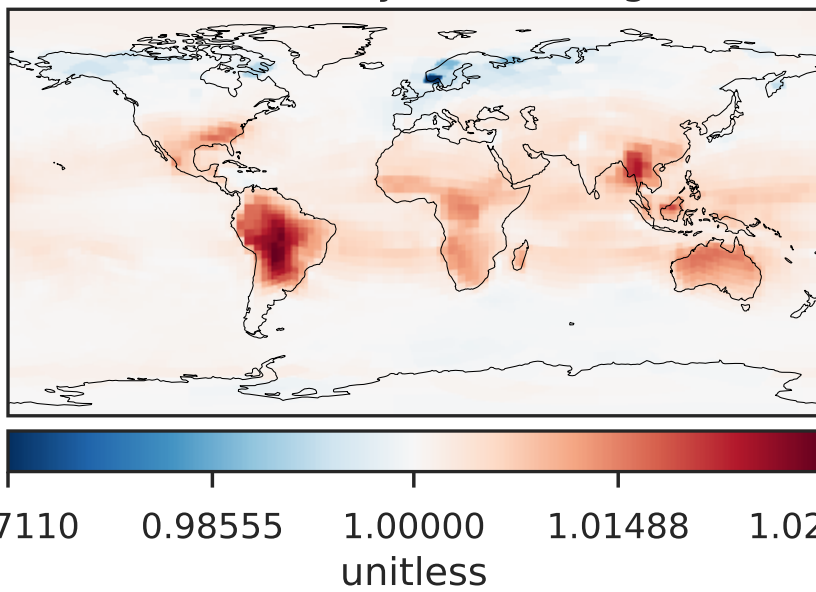
Difference (1x1.25)  
Dev - Ref, Dynamic Range



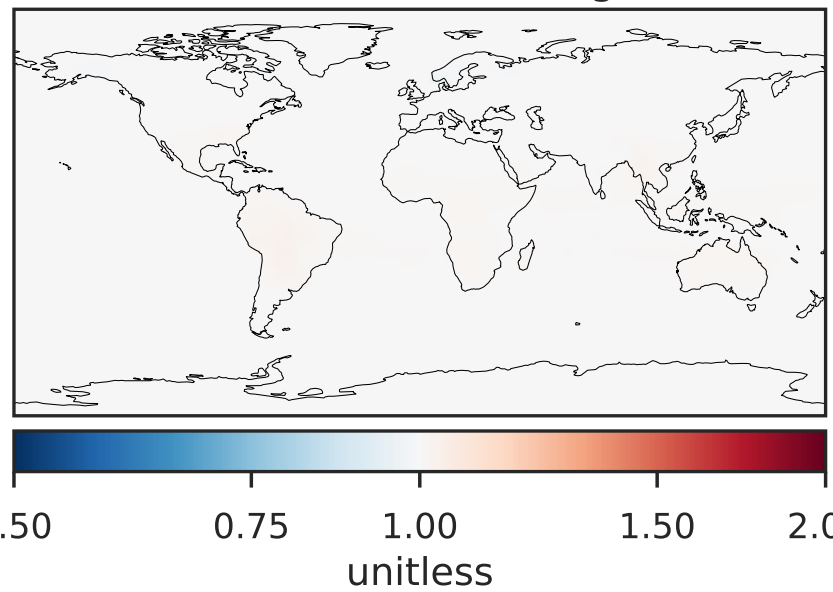
Difference (1x1.25)  
Dev - Ref, Restricted Range [5%,95%]



Ratio (1x1.25)  
Dev/Ref, Dynamic Range

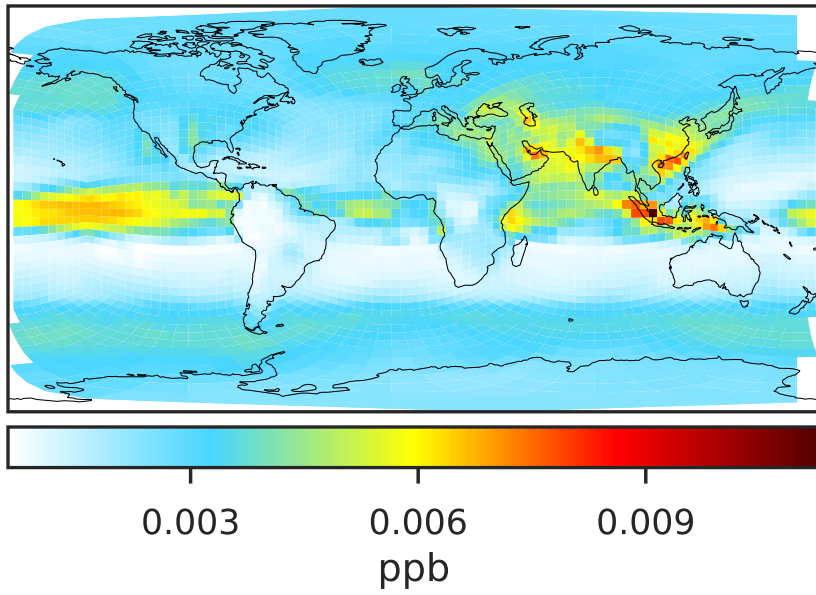


Ratio (1x1.25)  
Dev/Ref, Fixed Range

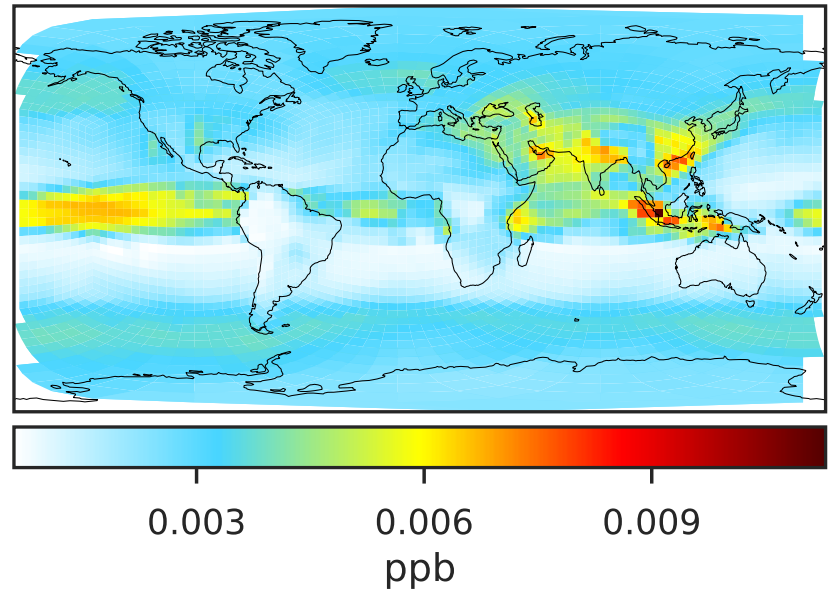


# SpeciesConcVV\_ETNO3 (Oct2019)

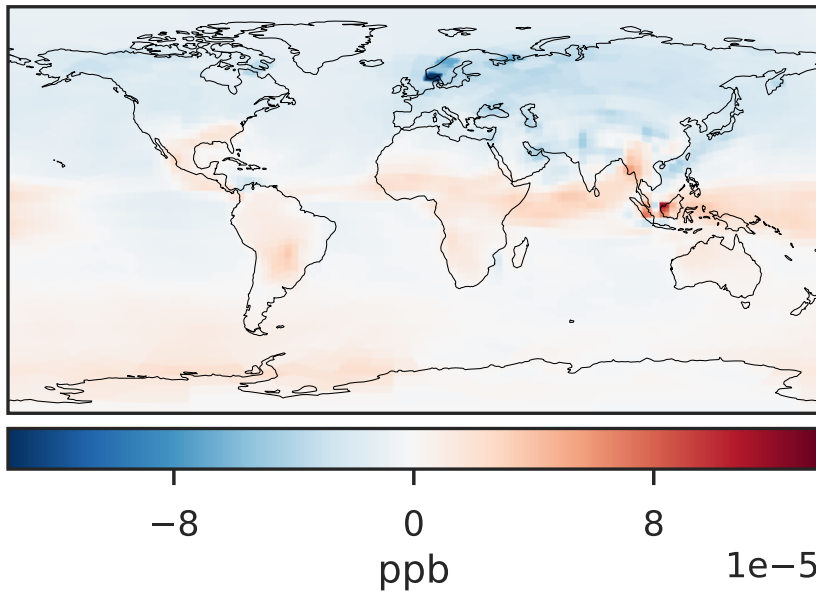
14.2.0-rc.2 (Ref)  
c24



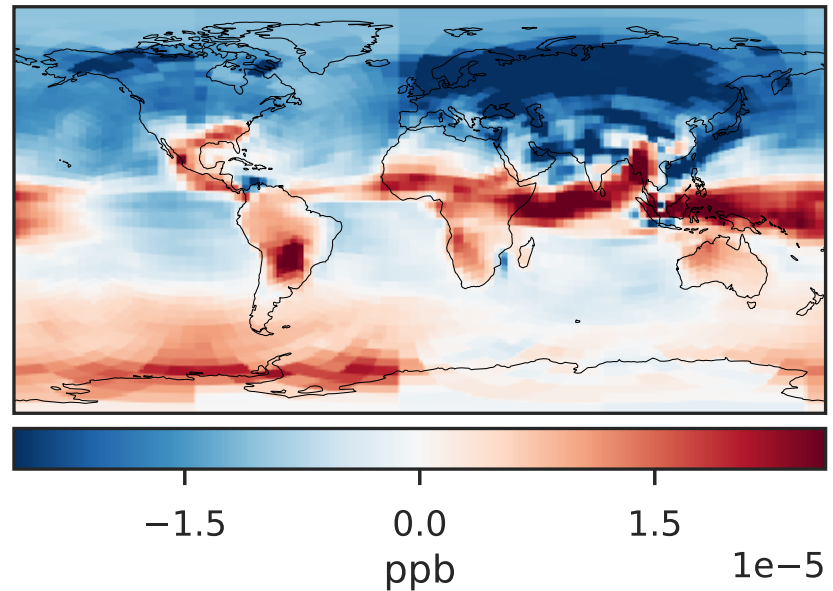
14.3.0-rc.0 (Dev)  
c24



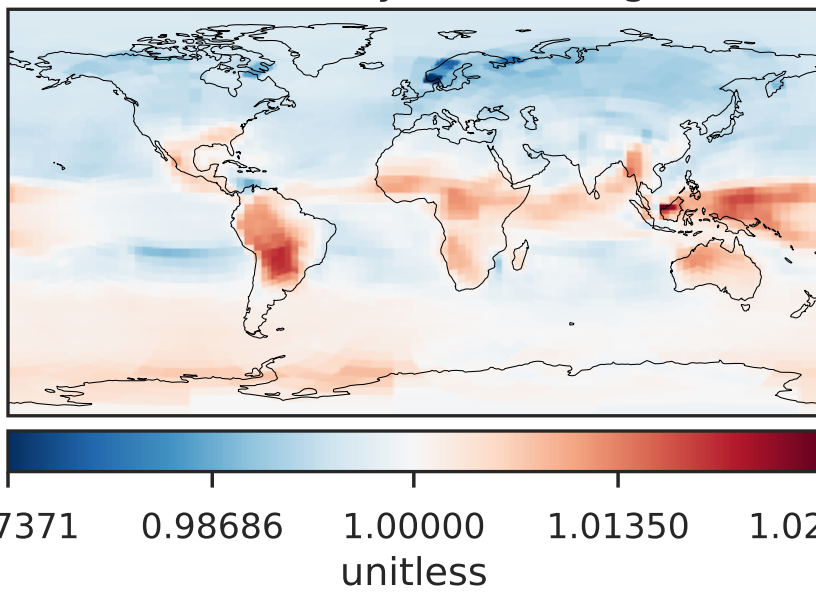
Difference (1x1.25)  
Dev - Ref, Dynamic Range



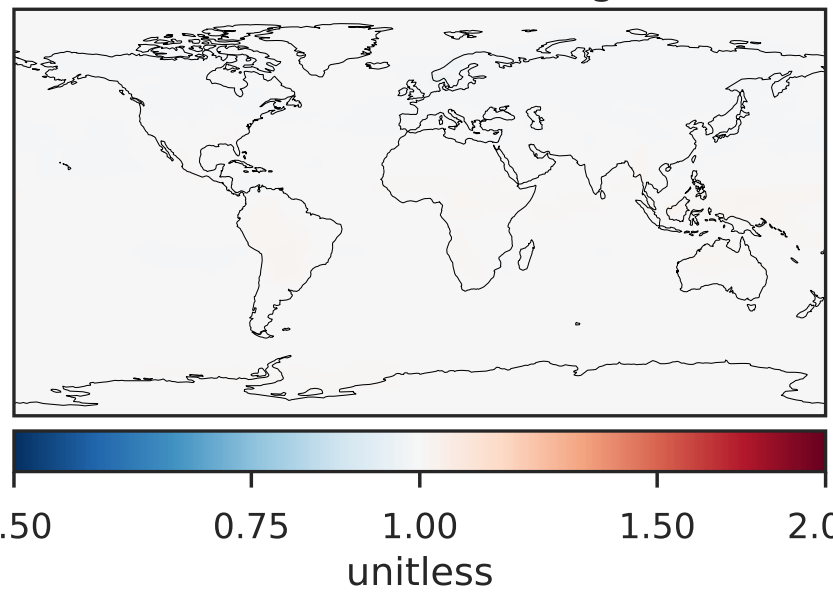
Difference (1x1.25)  
Dev - Ref, Restricted Range [5%,95%]



Ratio (1x1.25)  
Dev/Ref, Dynamic Range

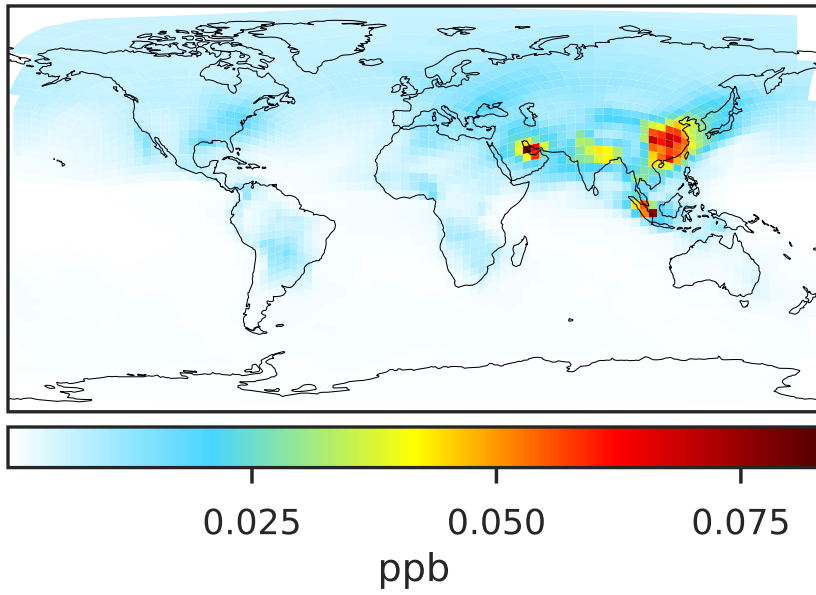


Ratio (1x1.25)  
Dev/Ref, Fixed Range

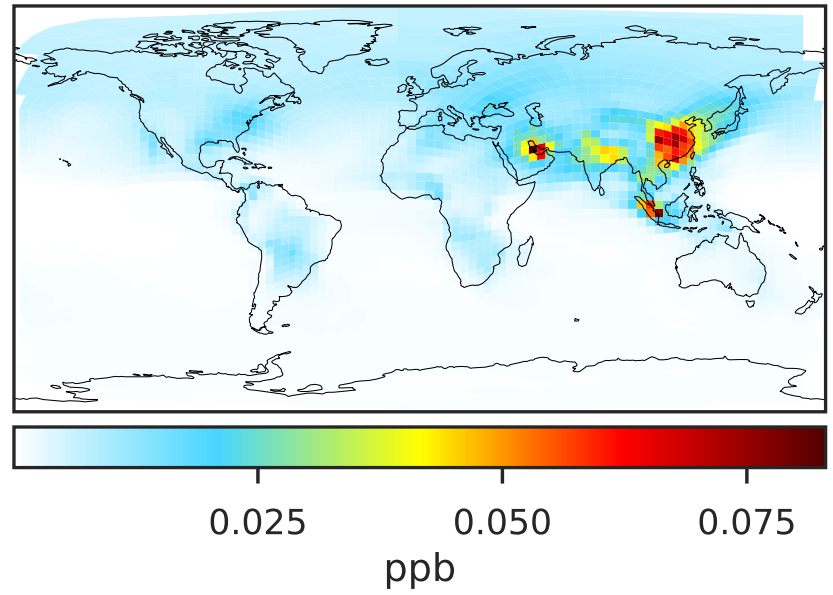


# SpeciesConcVV\_IPRNO3 (Oct2019)

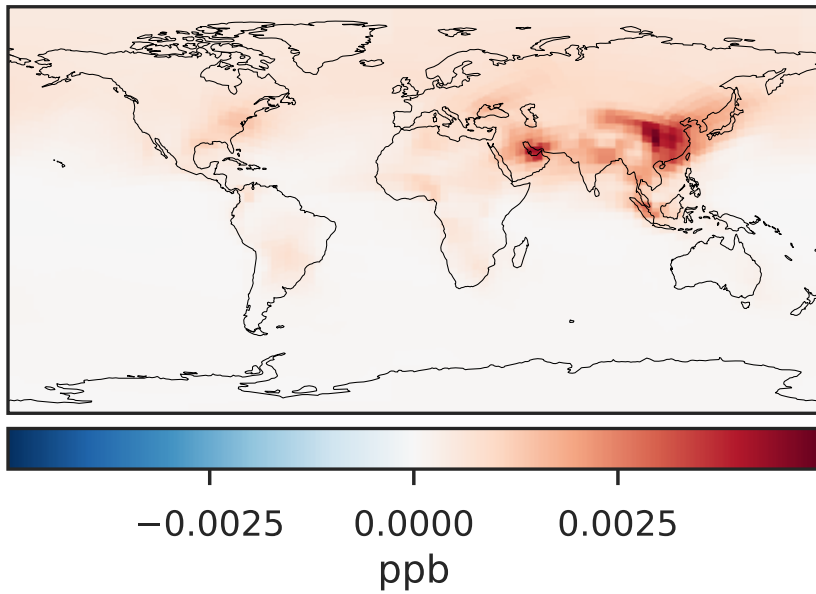
14.2.0-rc.2 (Ref)  
c24



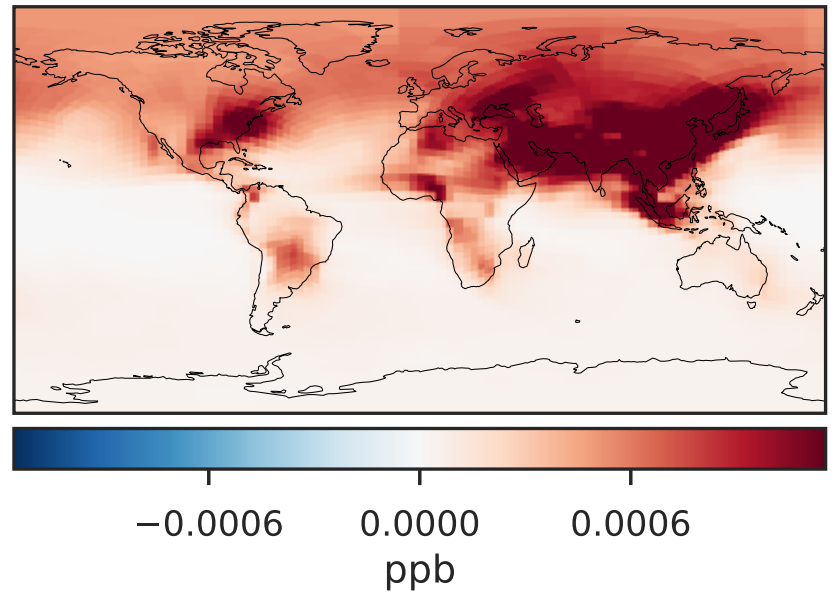
14.3.0-rc.0 (Dev)  
c24



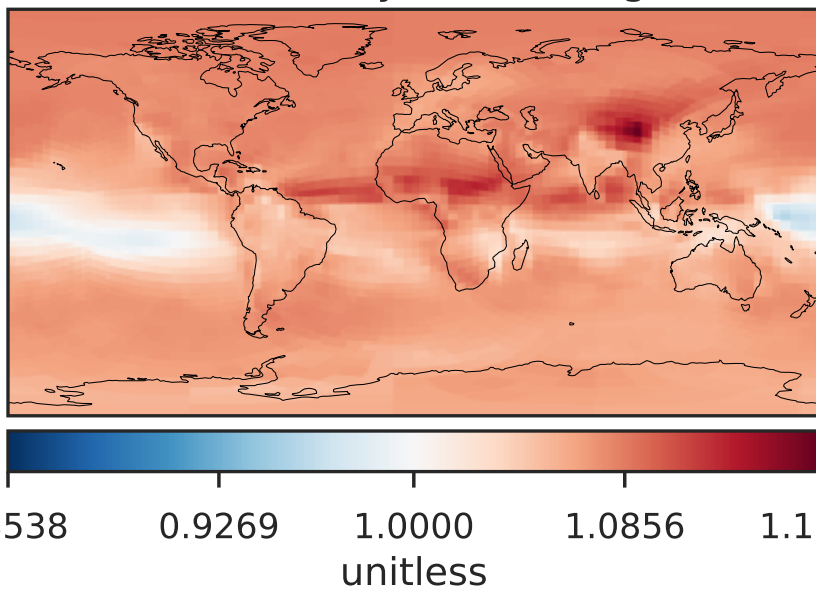
Difference (1x1.25)  
Dev - Ref, Dynamic Range



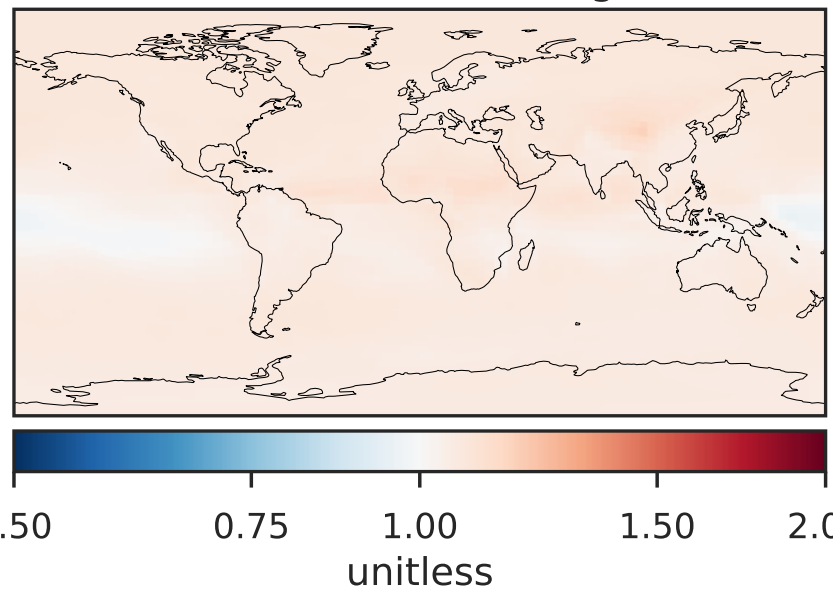
Difference (1x1.25)  
Dev - Ref, Restricted Range [5%,95%]



Ratio (1x1.25)  
Dev/Ref, Dynamic Range

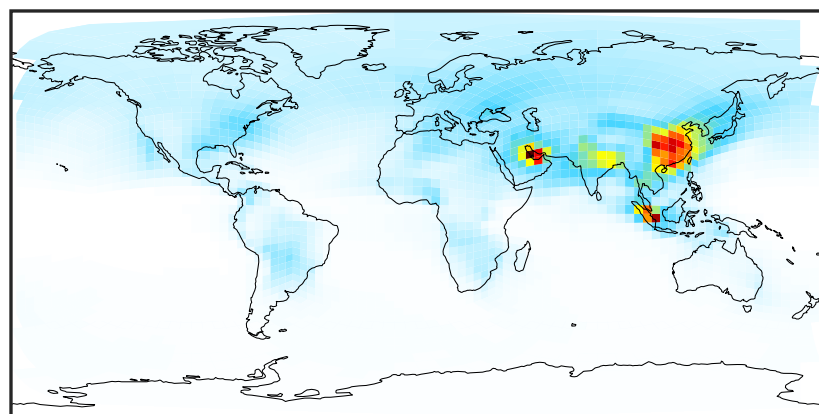


Ratio (1x1.25)  
Dev/Ref, Fixed Range



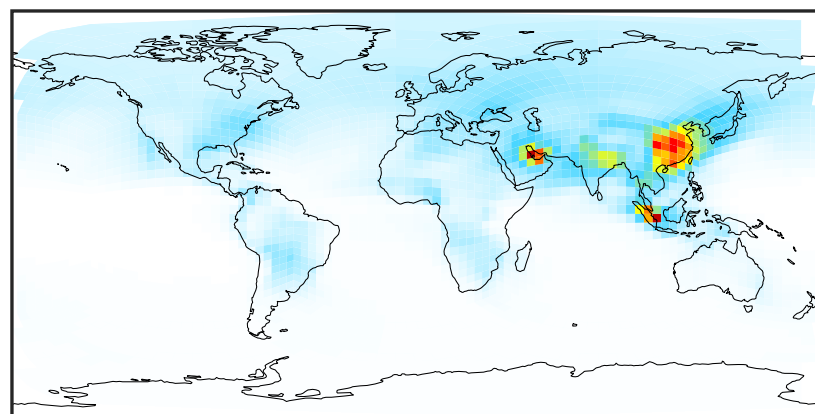
# SpeciesConcVV\_NPRNO3 (Oct2019)

14.2.0-rc.2 (Ref)  
c24



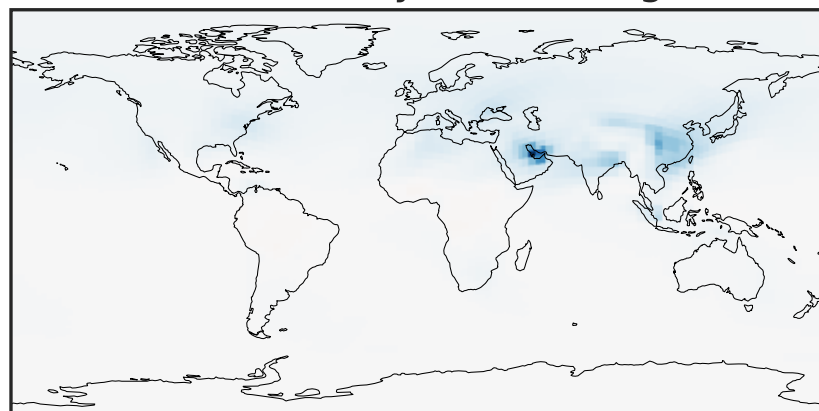
0.006 0.012 0.018  
ppb

14.3.0-rc.0 (Dev)  
c24



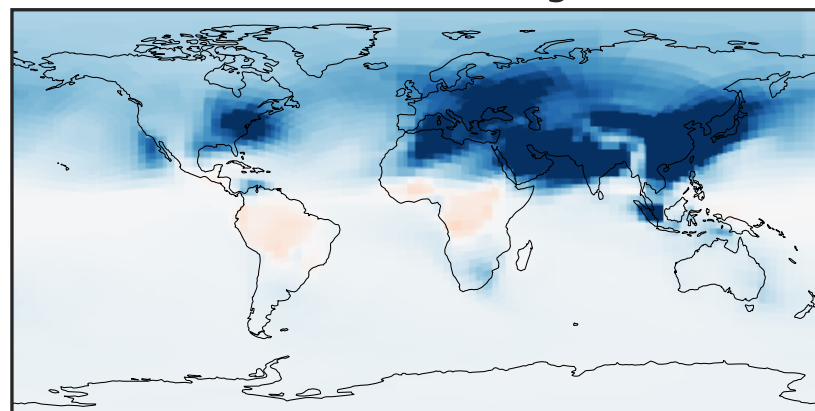
0.006 0.012 0.018  
ppb

Difference (1x1.25)  
Dev - Ref, Dynamic Range



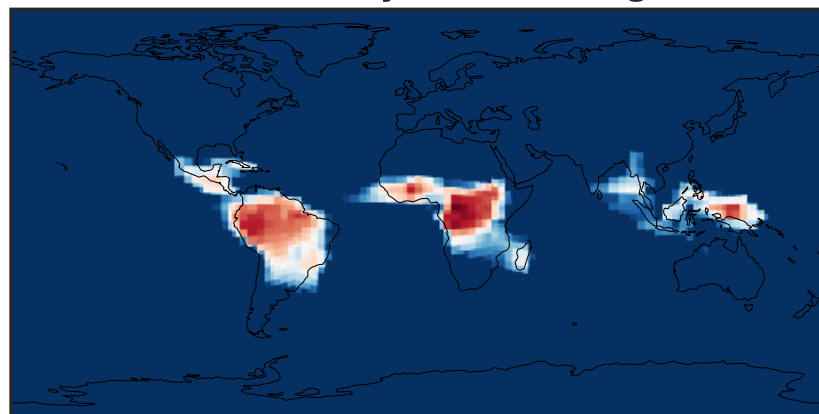
-0.002 0.000 0.002  
ppb

Difference (1x1.25)  
Dev - Ref, Restricted Range [5%,95%]



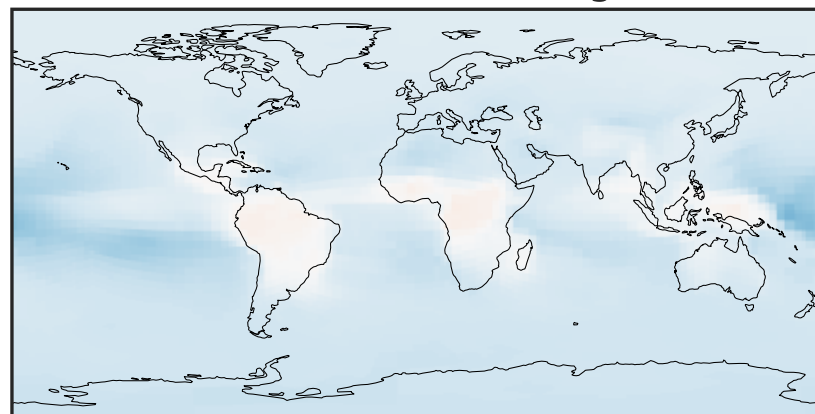
-0.0002 0.0000 0.0002  
ppb

Ratio (1x1.25)  
Dev/Ref, Dynamic Range



0.95647 0.97823 1.00000 1.02276 1.04551  
unitless

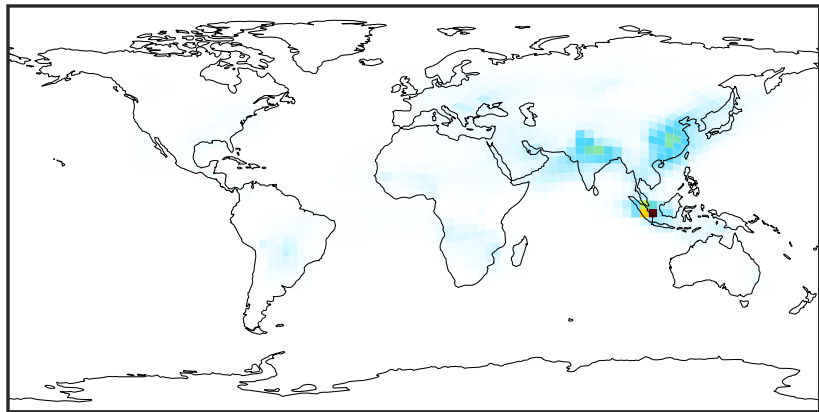
Ratio (1x1.25)  
Dev/Ref, Fixed Range



0.50 0.75 1.00 1.50 2.00  
unitless

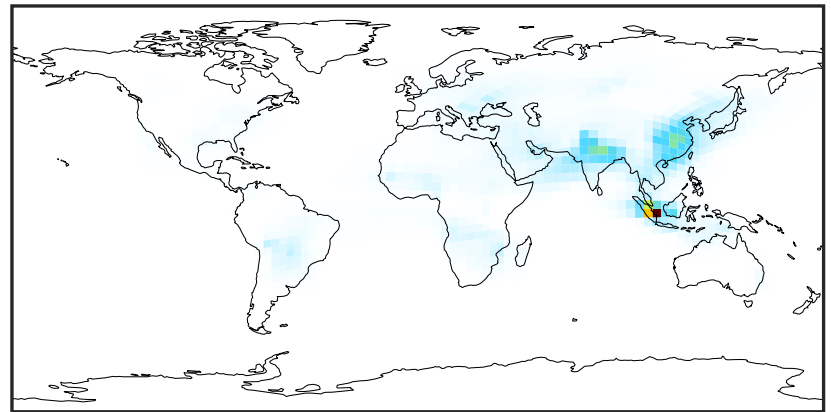
# SpeciesConcVV\_AONITA (Oct2019)

14.2.0-rc.2 (Ref)  
c24



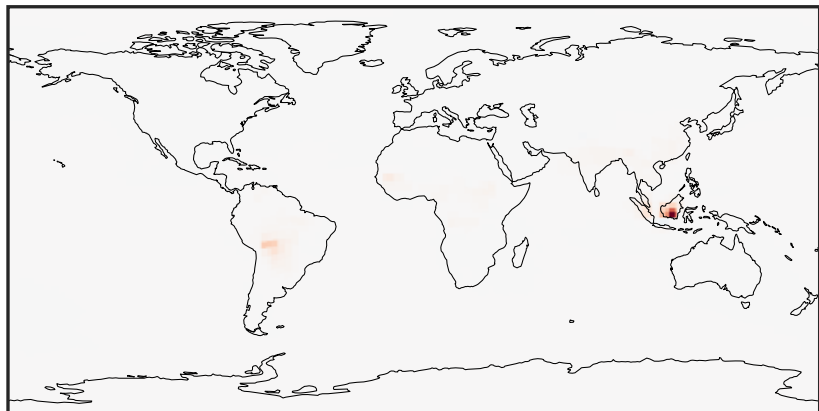
0.0000 0.1589 0.3178 0.4767 0.6356  
ppb

14.3.0-rc.0 (Dev)  
c24



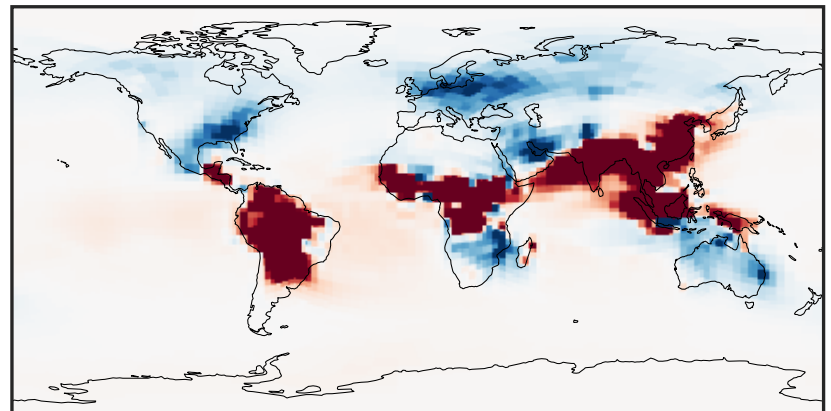
0.0000 0.1589 0.3178 0.4767 0.6356  
ppb

Difference (1x1.25)  
Dev - Ref, Dynamic Range



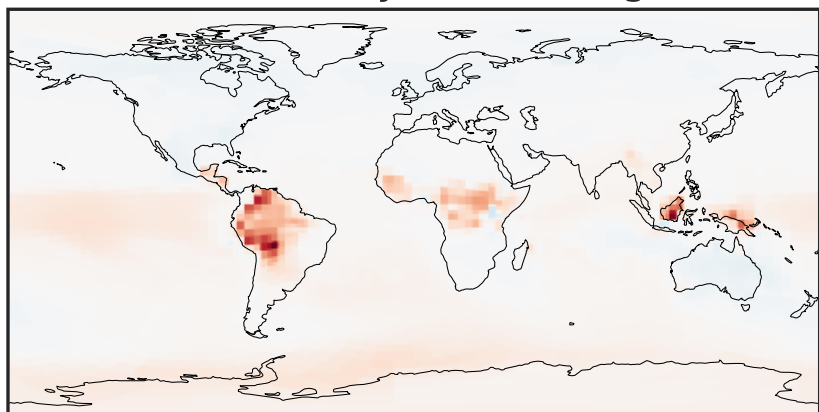
-0.0797 -0.0399 0.0000 0.0399 0.0797  
ppb

Difference (1x1.25)  
Dev - Ref, Restricted Range [5%,95%]



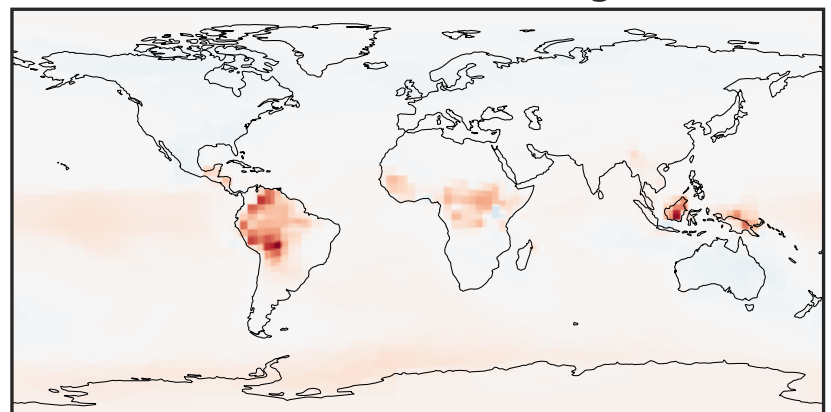
-0.00015 0.00000 0.00015  
ppb

Ratio (1x1.25)  
Dev/Ref, Dynamic Range



0.526 0.763 1.000 1.451 1.902  
unitless

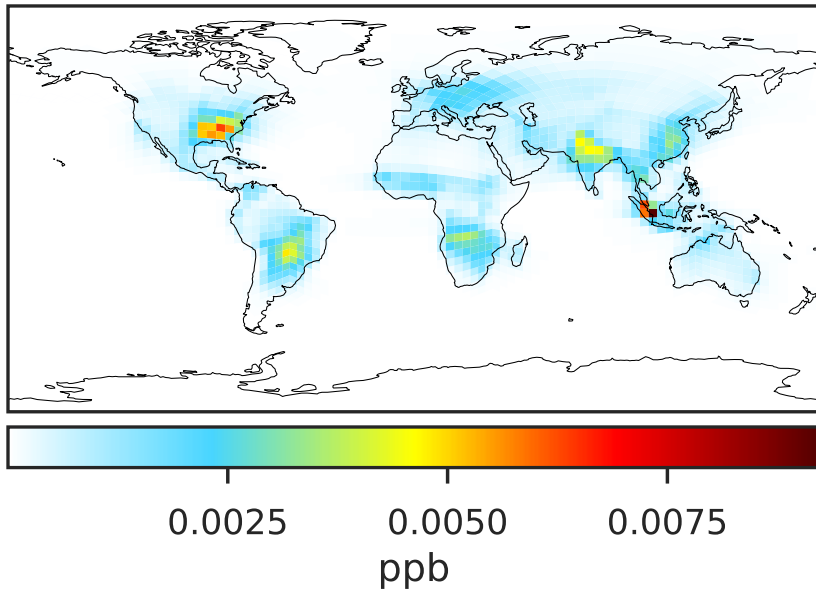
Ratio (1x1.25)  
Dev/Ref, Fixed Range



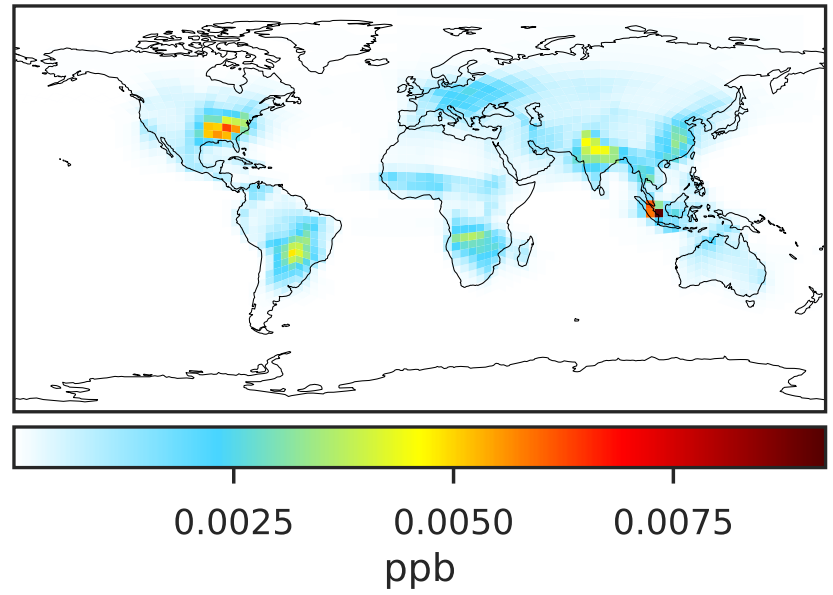
0.50 0.75 1.00 1.50 2.00  
unitless

# SpeciesConcVV\_ETHN (Oct2019)

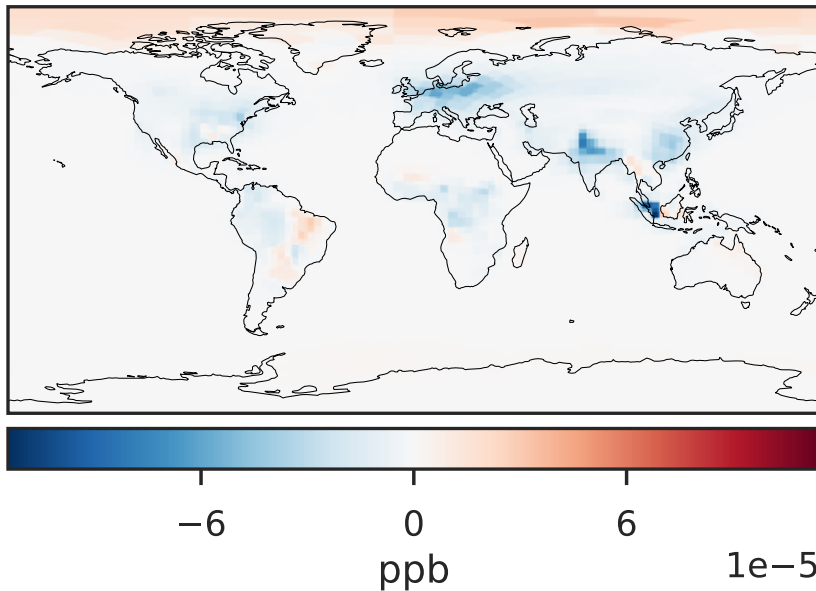
14.2.0-rc.2 (Ref)  
c24



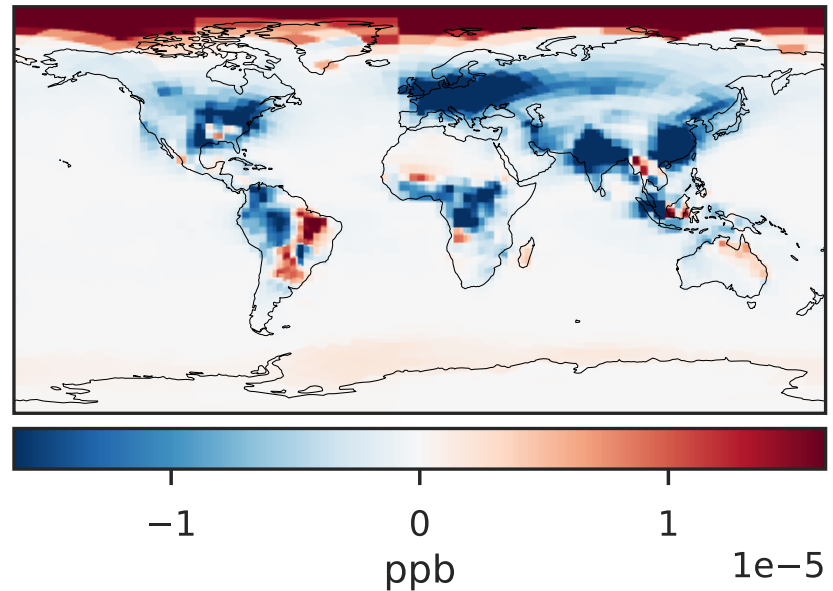
14.3.0-rc.0 (Dev)  
c24



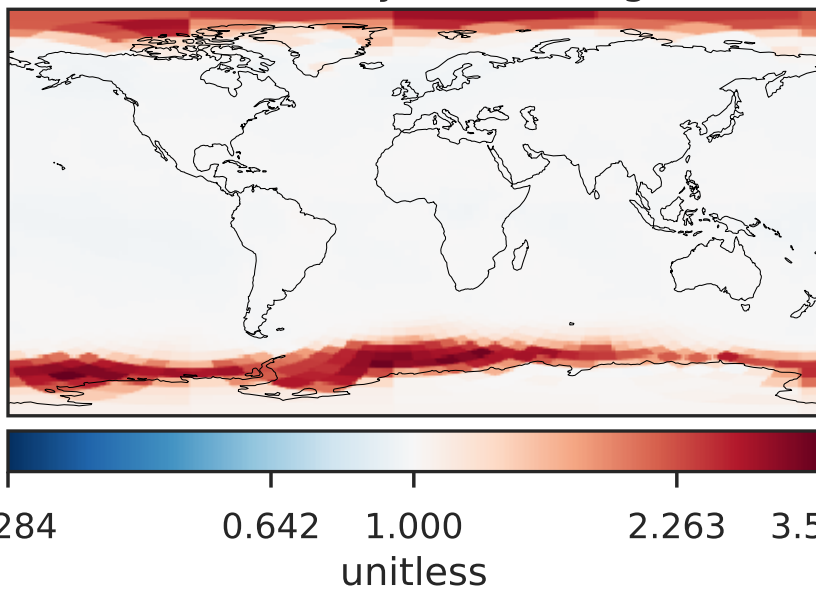
Difference (1x1.25)  
Dev - Ref, Dynamic Range



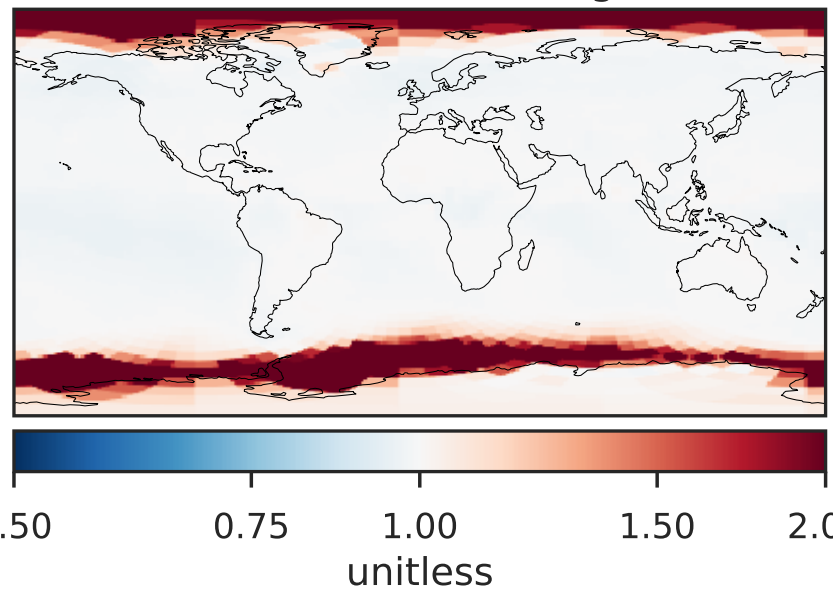
Difference (1x1.25)  
Dev - Ref, Restricted Range [5%,95%]



Ratio (1x1.25)  
Dev/Ref, Dynamic Range



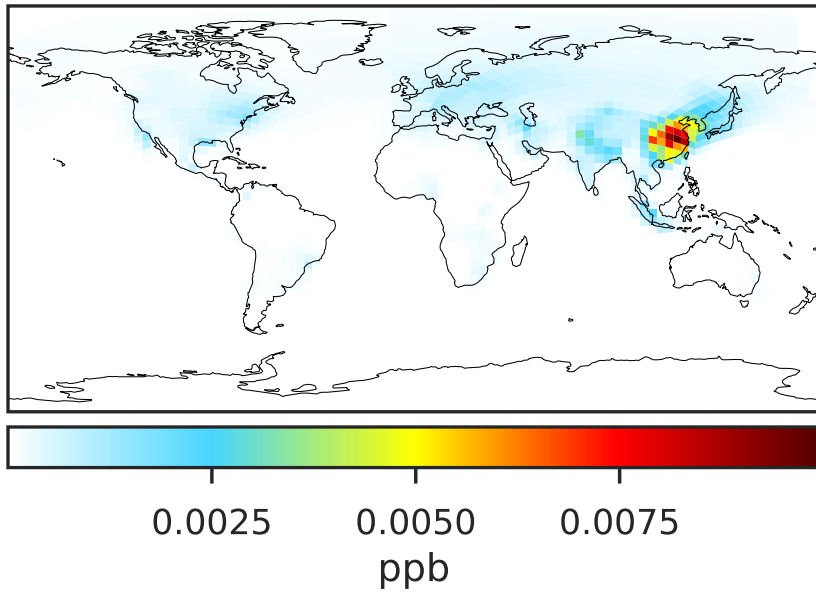
Ratio (1x1.25)  
Dev/Ref, Fixed Range



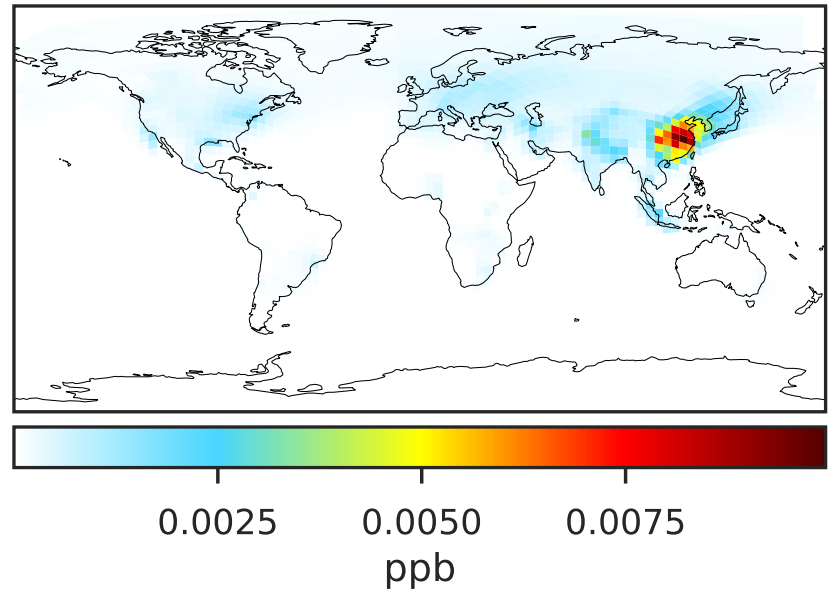


# SpeciesConcVV\_BZPAN (Oct2019)

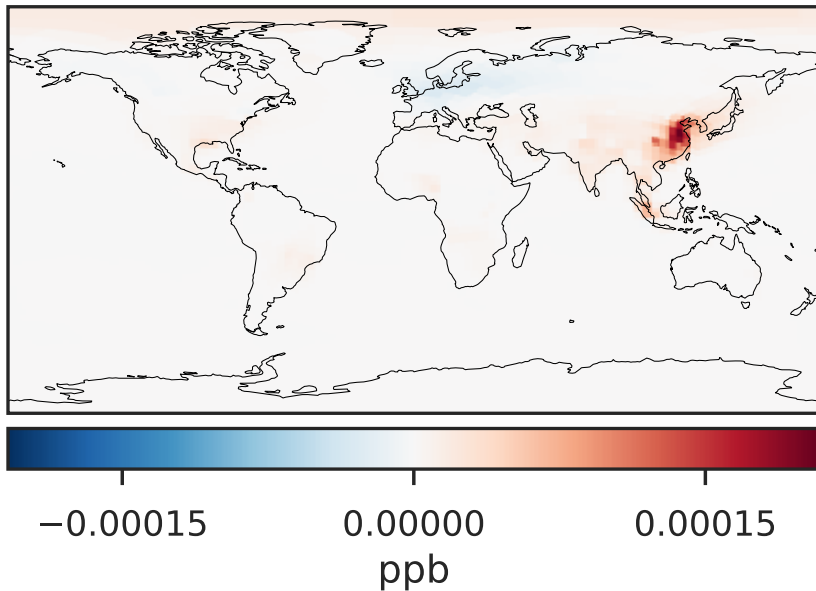
14.2.0-rc.2 (Ref)  
c24



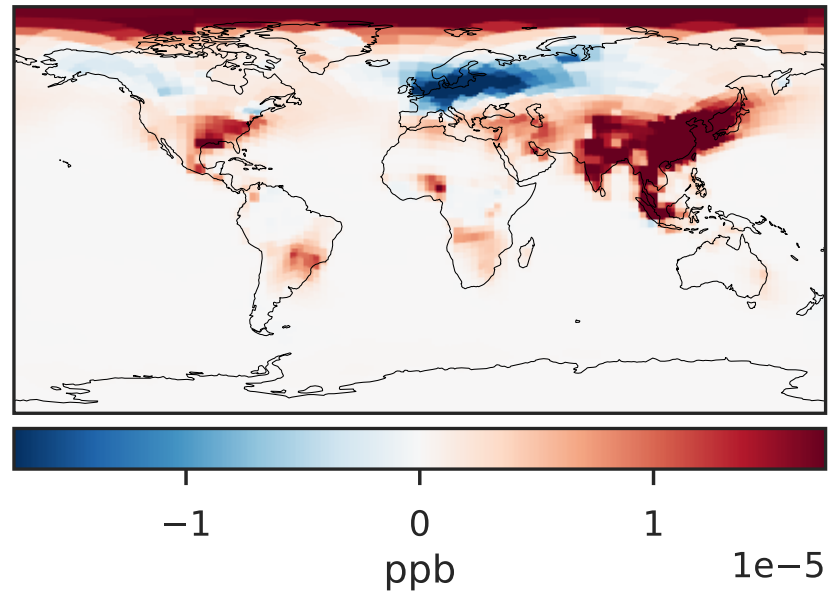
14.3.0-rc.0 (Dev)  
c24



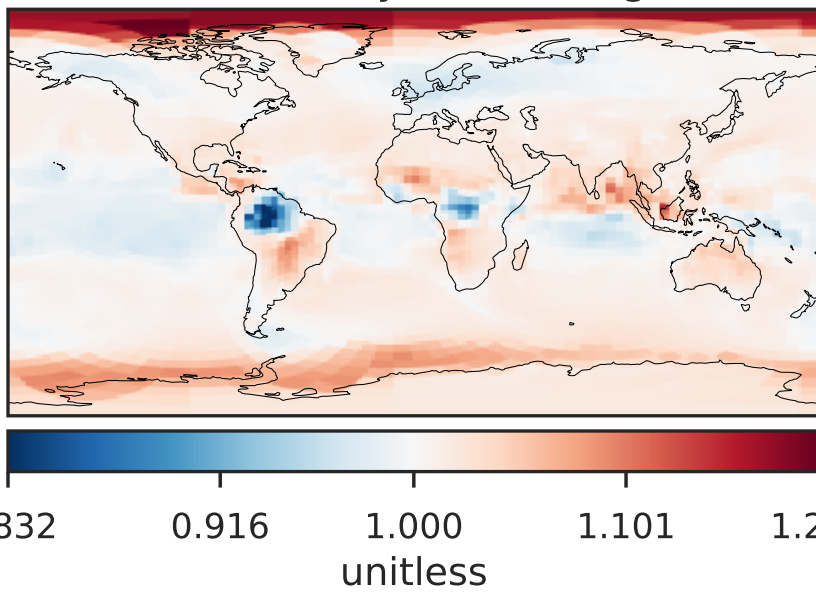
Difference (1x1.25)  
Dev - Ref, Dynamic Range



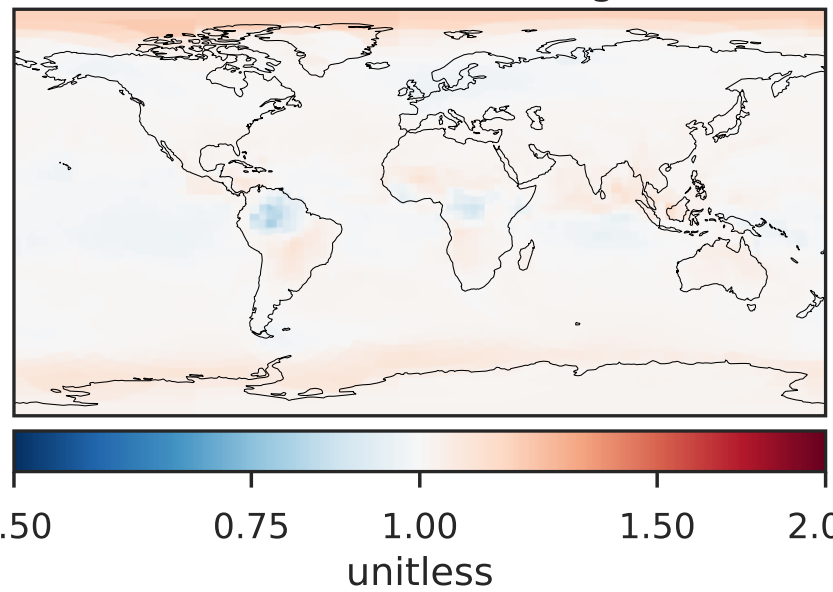
Difference (1x1.25)  
Dev - Ref, Restricted Range [5%,95%]



Ratio (1x1.25)  
Dev/Ref, Dynamic Range

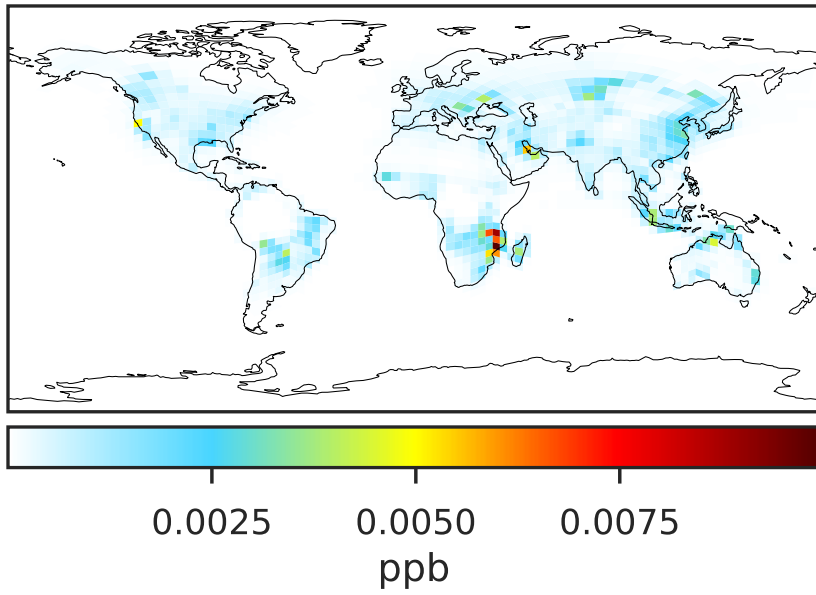


Ratio (1x1.25)  
Dev/Ref, Fixed Range

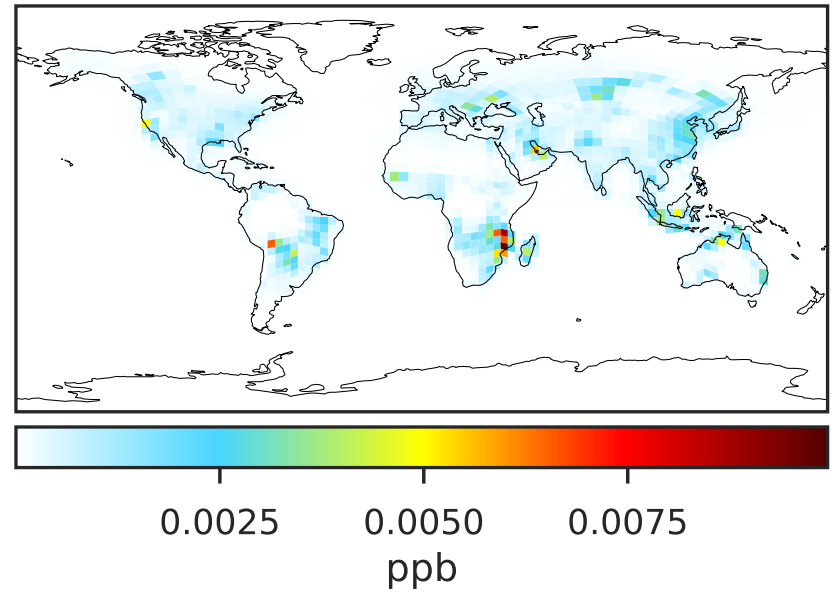


# SpeciesConcVV\_NPHEN (Oct2019)

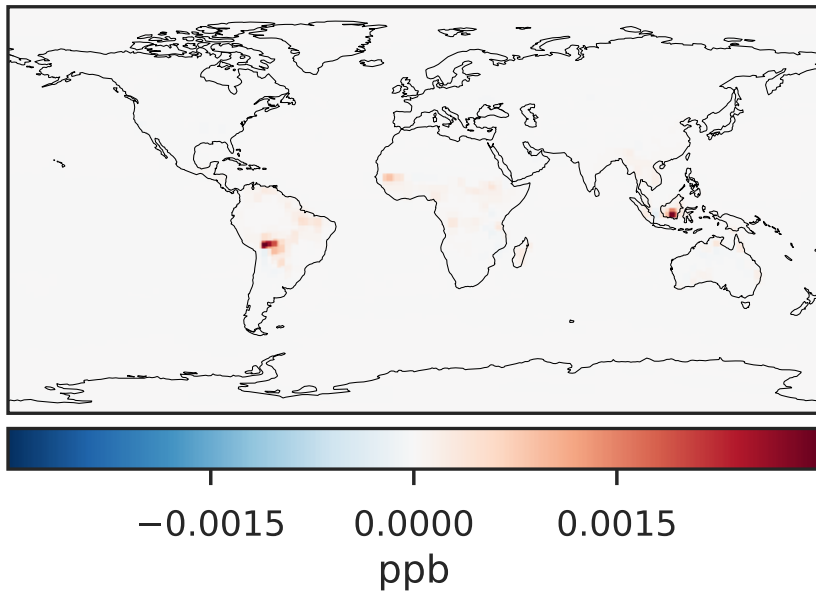
14.2.0-rc.2 (Ref)  
c24



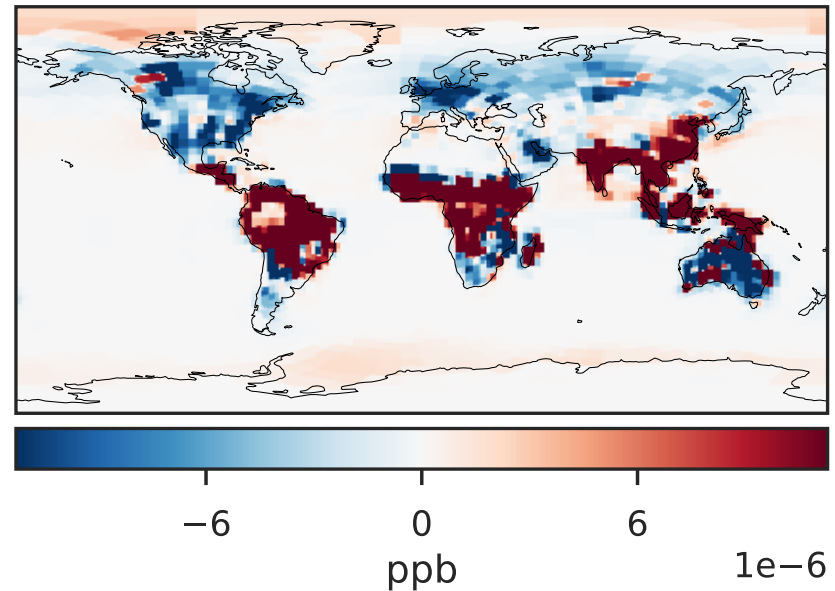
14.3.0-rc.0 (Dev)  
c24



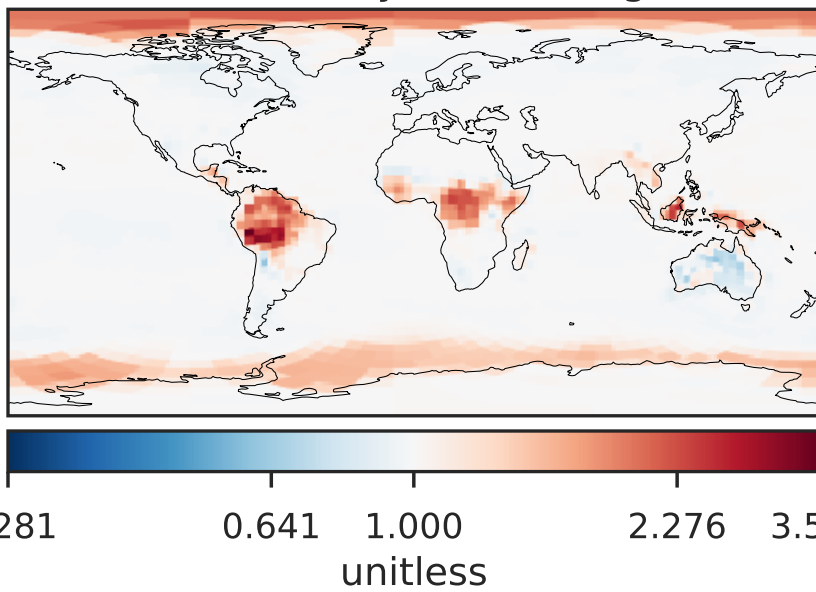
Difference (1x1.25)  
Dev - Ref, Dynamic Range



Difference (1x1.25)  
Dev - Ref, Restricted Range [5%,95%]



Ratio (1x1.25)  
Dev/Ref, Dynamic Range



Ratio (1x1.25)  
Dev/Ref, Fixed Range

