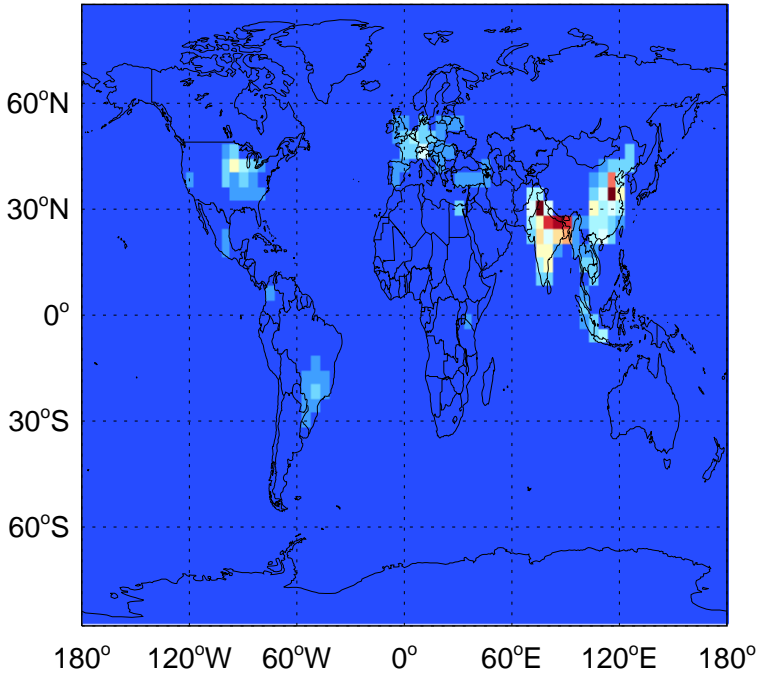


GEOS-Chem Emission Maps

v11-02e-Run1

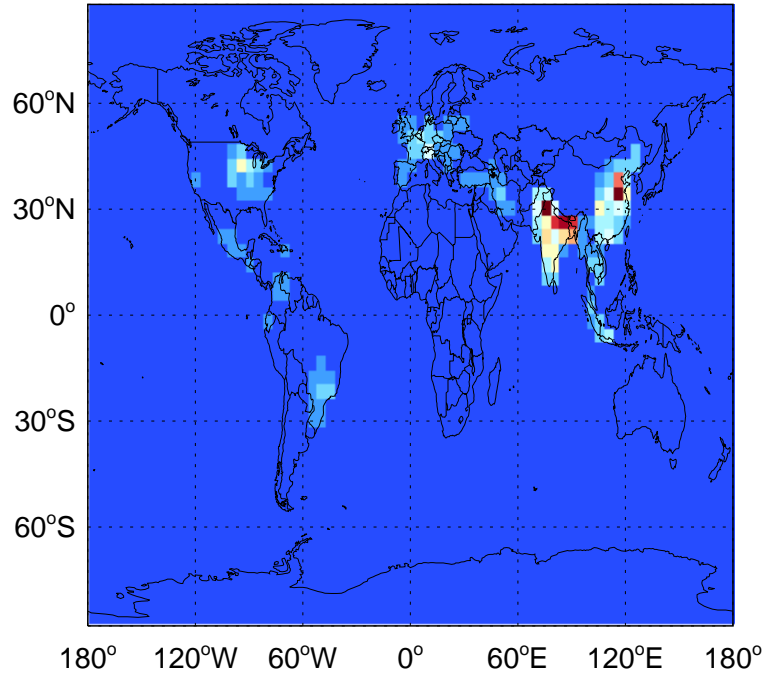
NH₃ column anthro emissions for Apr



0.00e+00 5.18e+07 1.04e+08kg

v11-02f-Run1

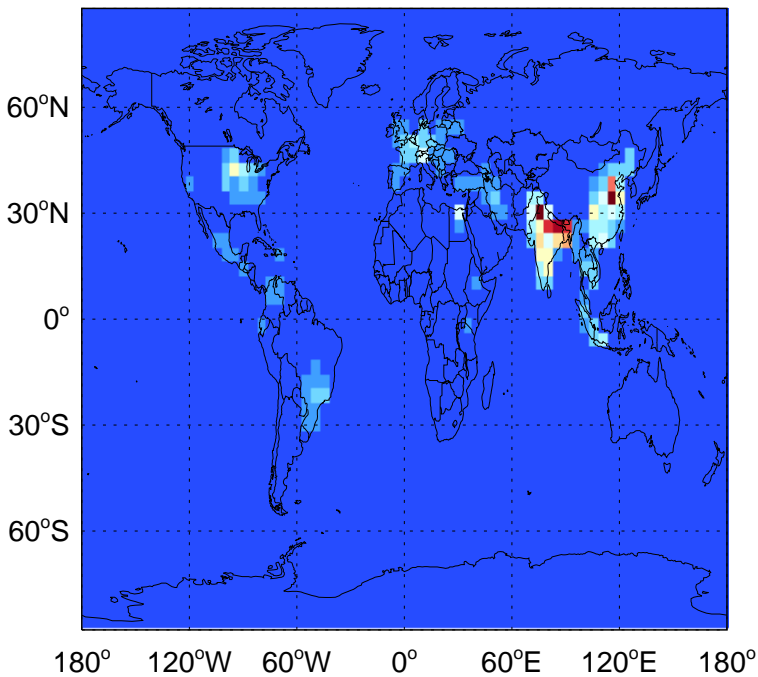
NH₃ column anthro emissions for Apr



0.00e+00 5.18e+07 1.04e+08kg

GC_12.0.0

NH₃ column anthro emissions for Apr

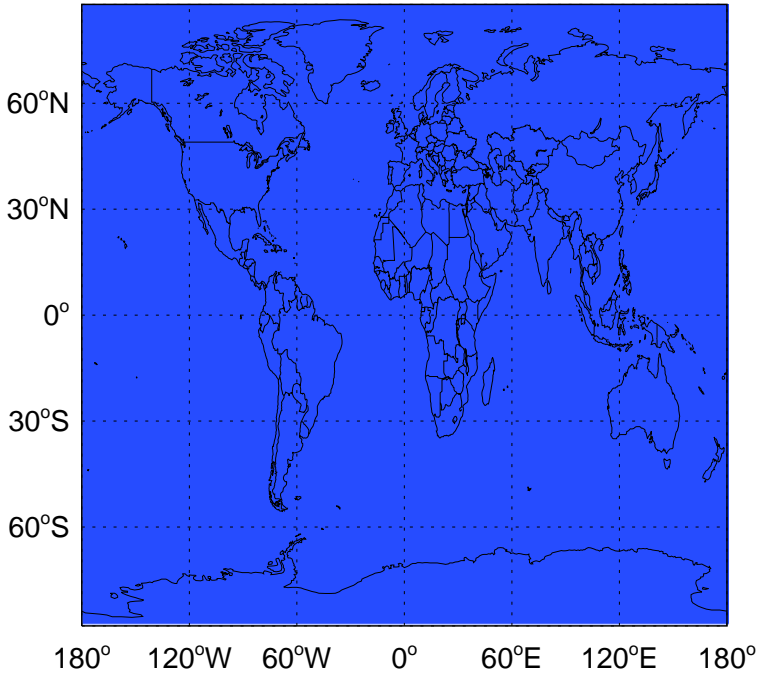


0.00e+00 5.18e+07 1.04e+08kg

GEOS-Chem Emission Maps

v11-02e-Run1

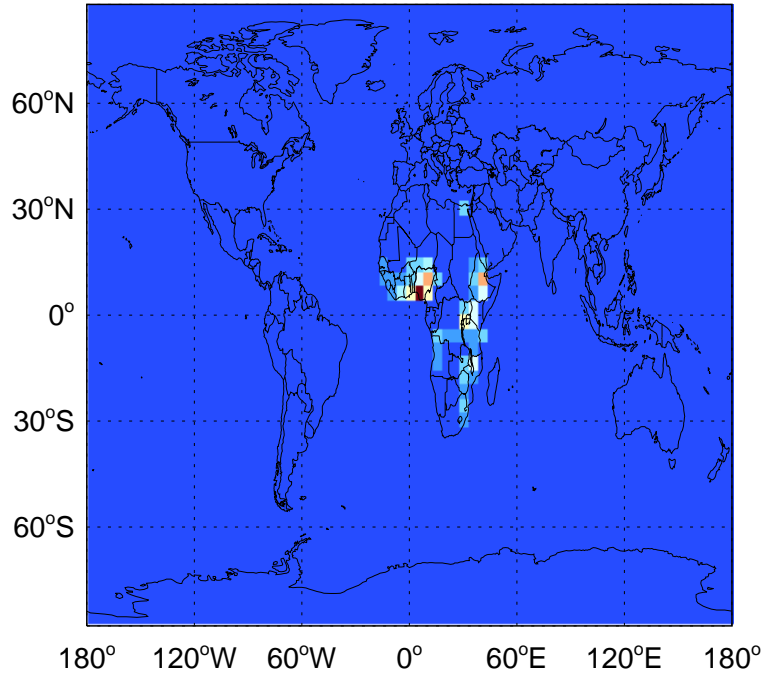
NH3 biofuel emissions for Apr



0.00e+00 kg

v11-02f-Run1

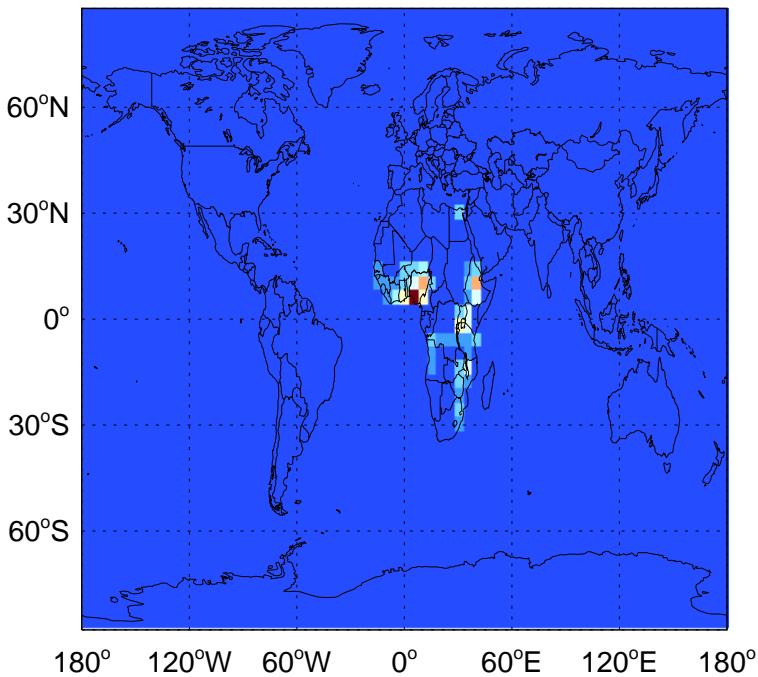
NH3 biofuel emissions for Apr



0.00e+00 2.52e+05 5.03e+05kg

GC_12.0.0

NH3 biofuel emissions for Apr

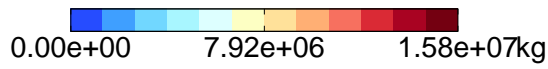
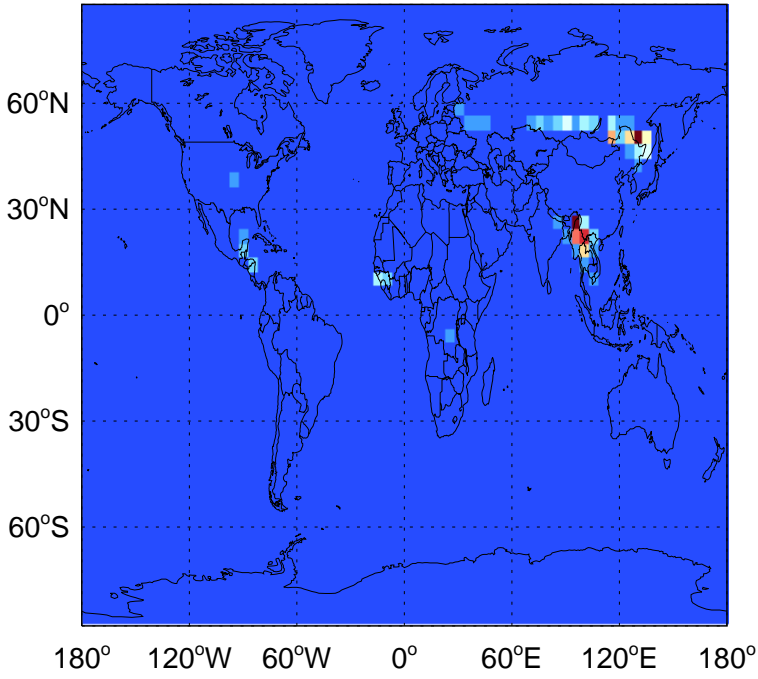


0.00e+00 2.52e+05 5.03e+05kg

GEOS-Chem Emission Maps

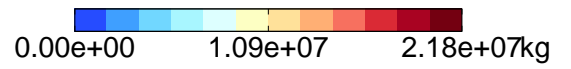
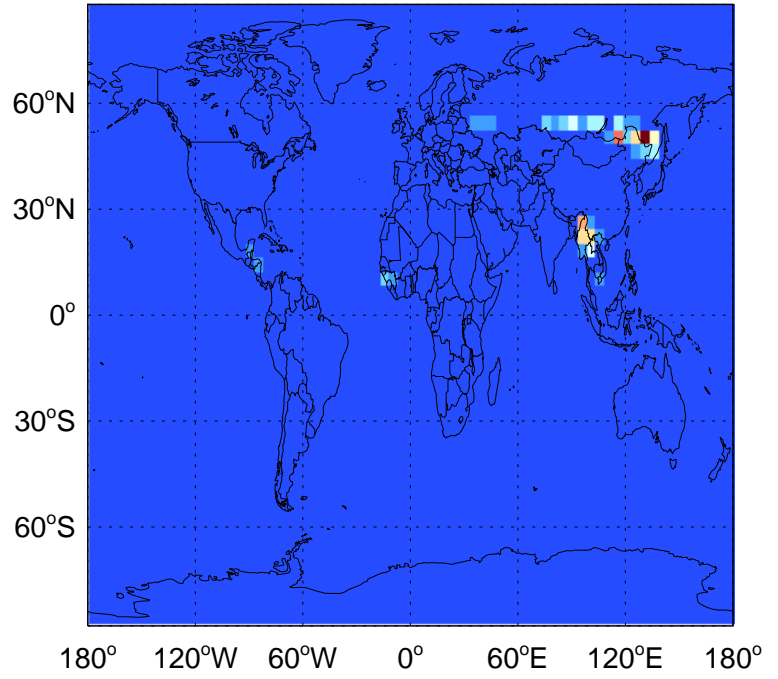
v11-02e-Run1

NH3 biomass emissions for Apr



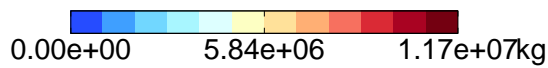
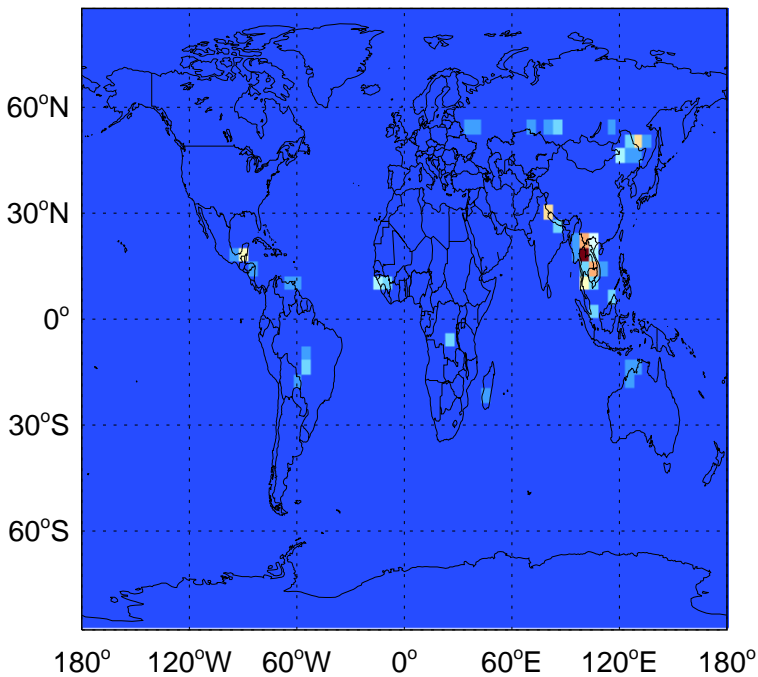
v11-02f-Run1

NH3 biomass emissions for Apr



GC_12.0.0

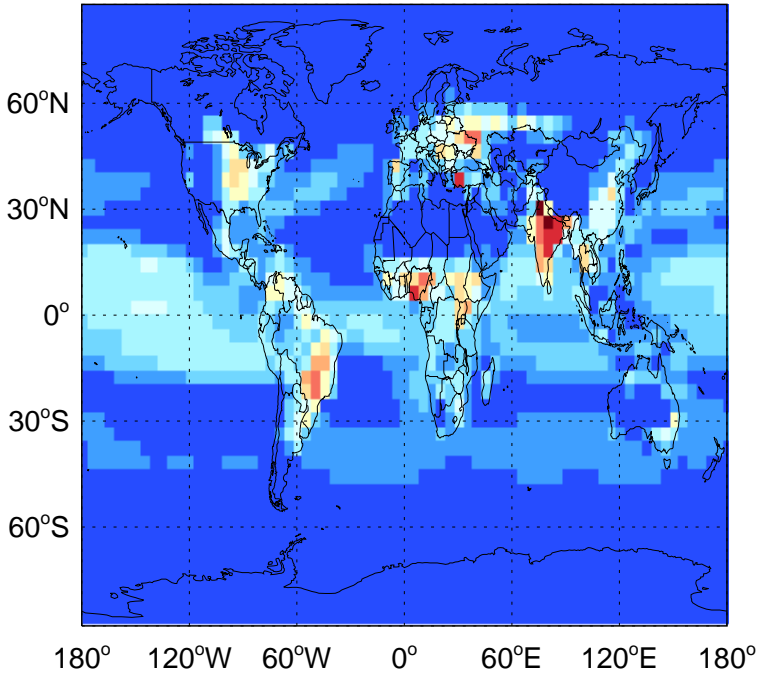
NH3 biomass emissions for Apr



GEOS-Chem Emission Maps

v11-02e-Run1

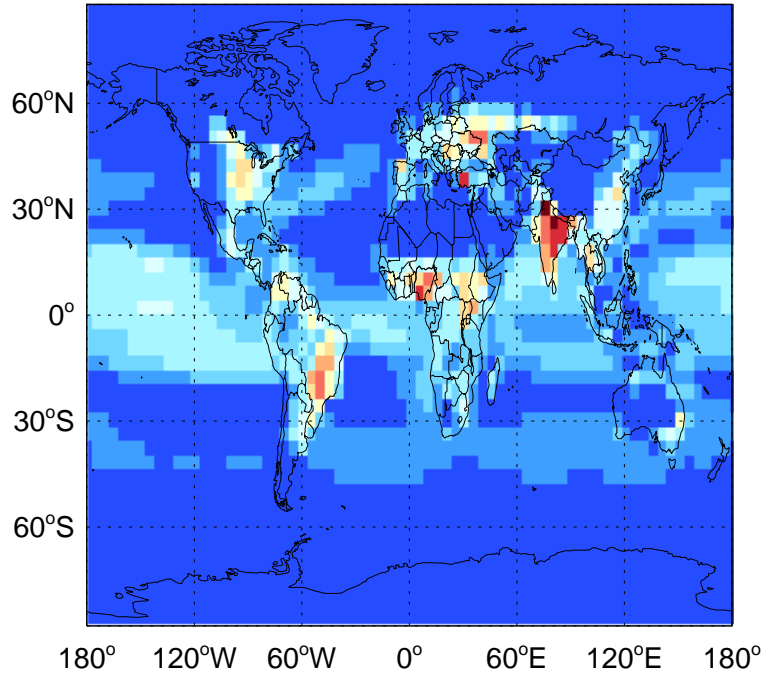
NH3 natural src emissions for Apr



0.00e+00 2.43e+06 4.86e+06kg

v11-02f-Run1

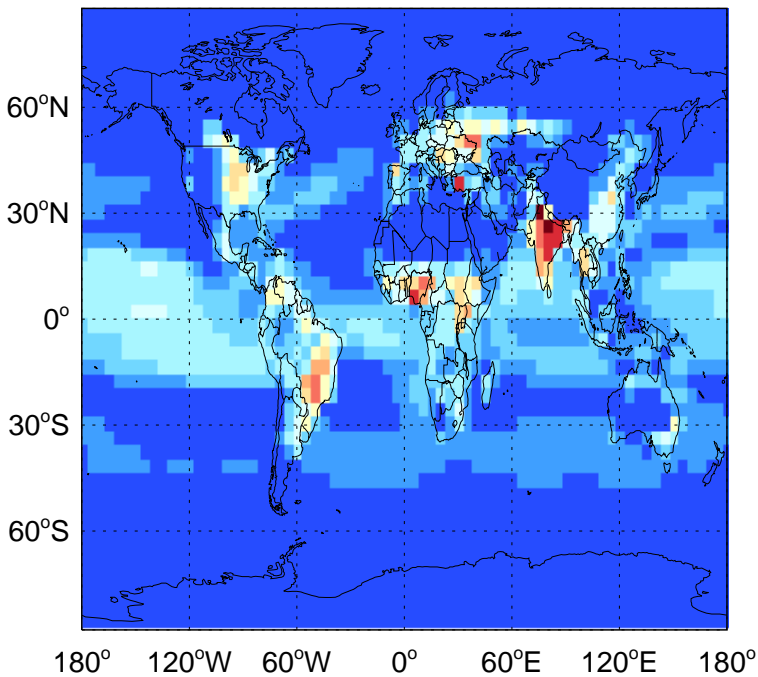
NH3 natural src emissions for Apr



0.00e+00 2.43e+06 4.86e+06kg

GC_12.0.0

NH3 natural src emissions for Apr



0.00e+00 2.43e+06 4.86e+06kg