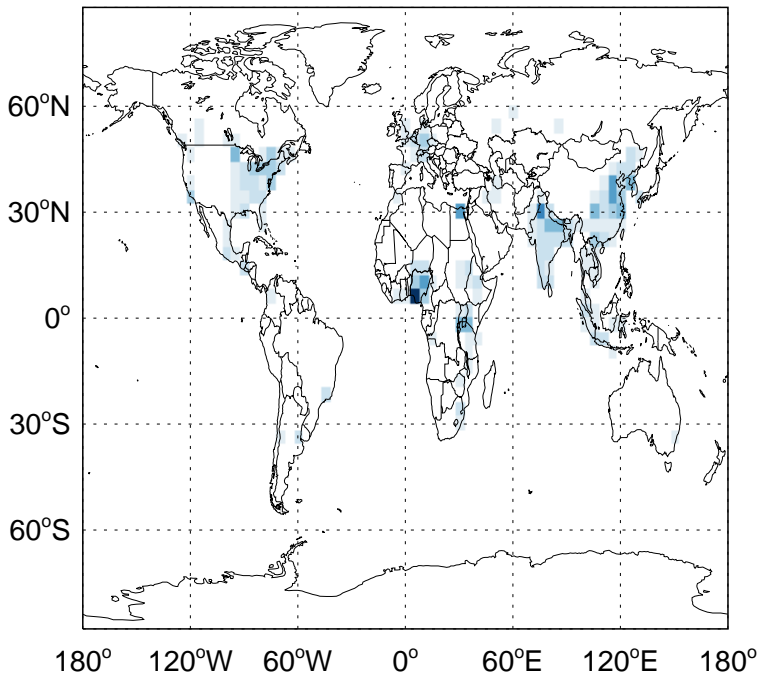


# GEOS-Chem Absolute Emission Differences

v11-02c - v11-01-public-Run0

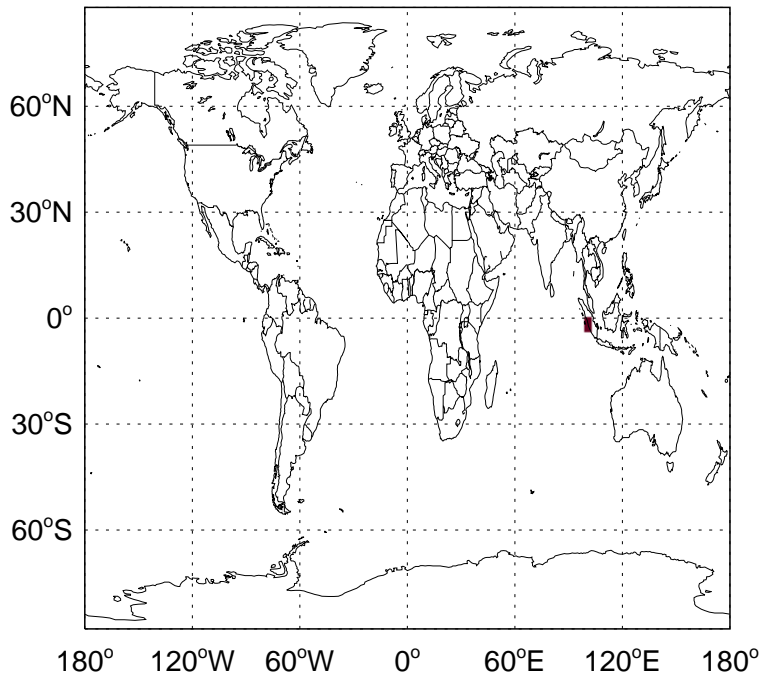
ALD2 column anth+biof emissions for Oct



-6.71e+11 0.00e+00 6.71e+11 atoms/m<sup>2</sup>/d

v11-02c - v11-02a

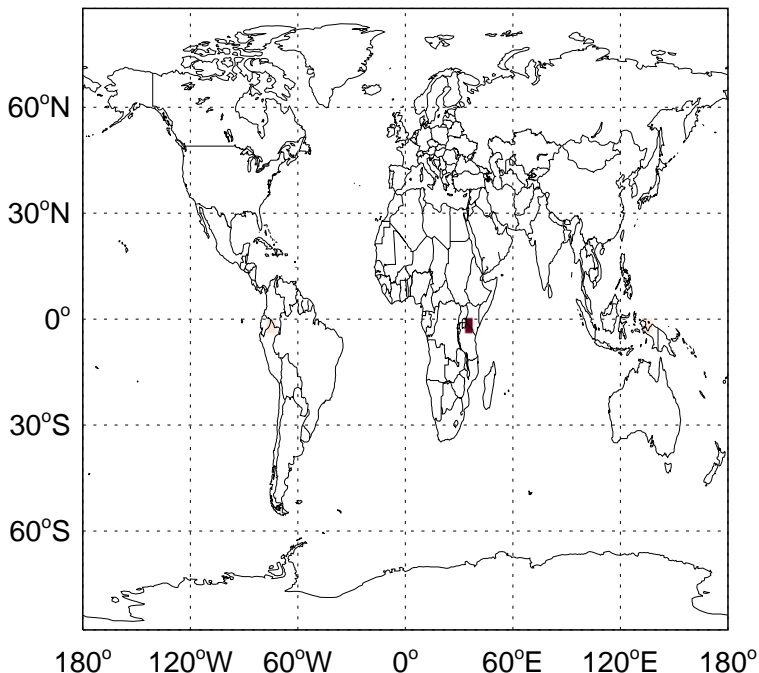
ALD2 column anth+biof emissions for Oct



-7.68e+02 0.00e+00 7.68e+02 atoms/m<sup>2</sup>/d

v11-02c - v11-01-public-Run0

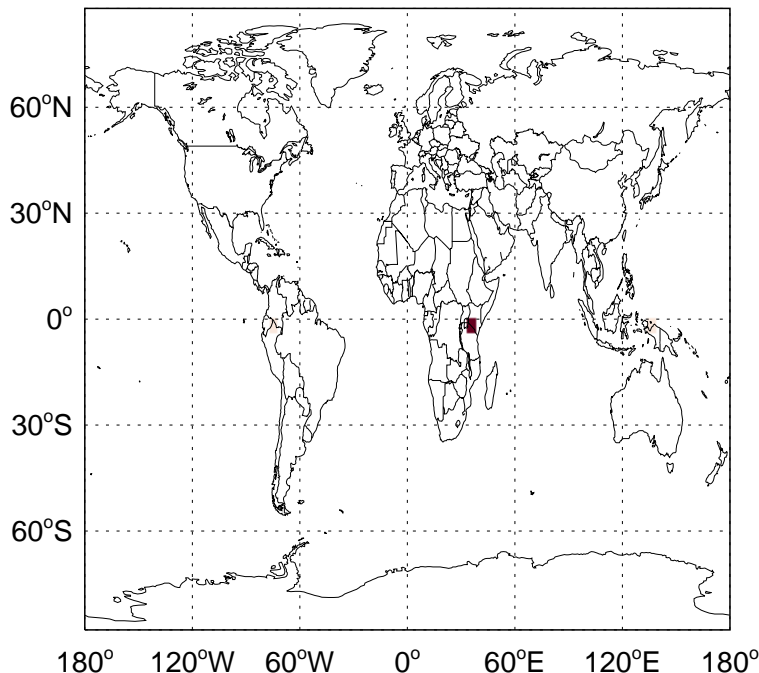
ALD2 biomass emissions for Oct



-3.20e+01 0.00e+00 3.20e+01 atoms/m<sup>2</sup>/d

v11-02c - v11-02a

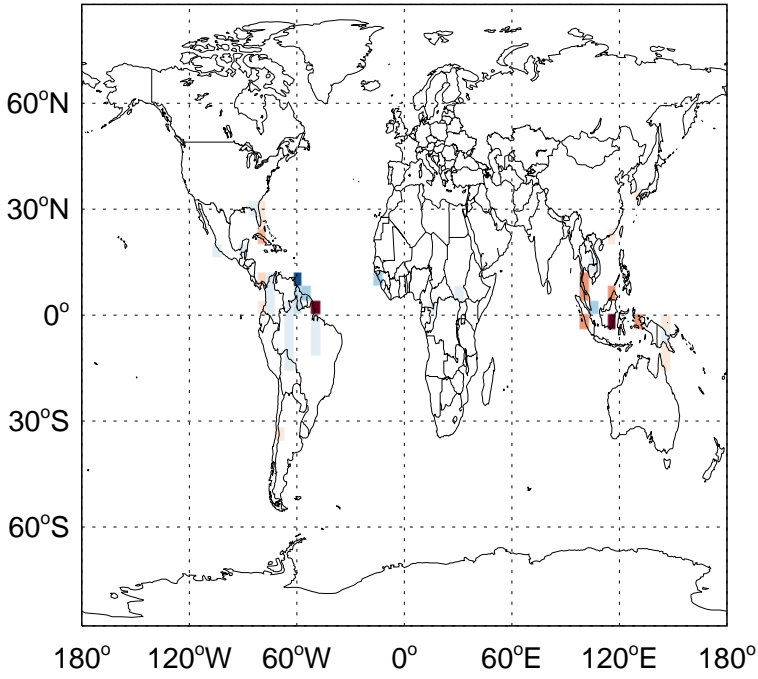
ALD2 biomass emissions for Oct



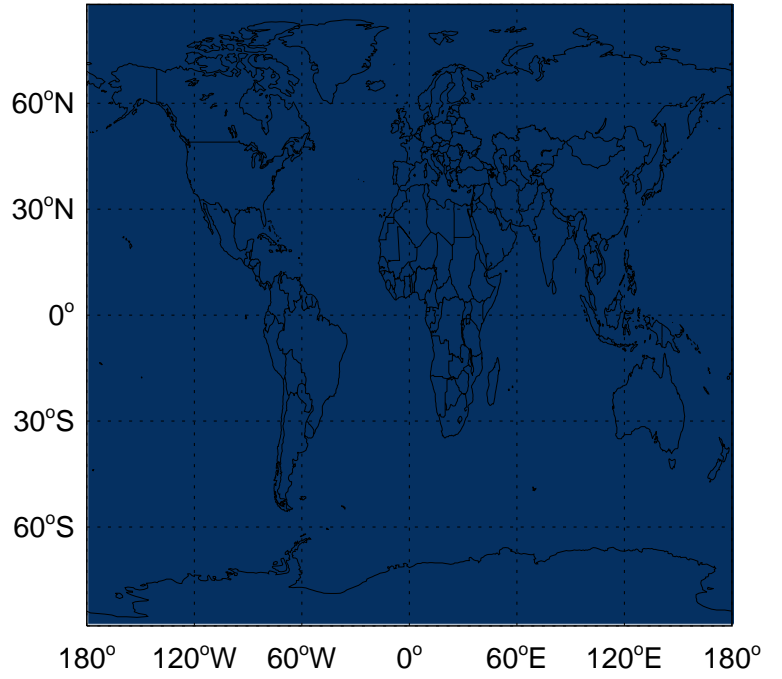
-3.20e+01 0.00e+00 3.20e+01 atoms/m<sup>2</sup>/d

# GEOS-Chem Absolute Emission Differences

v11-02c - v11-01-public-Run0  
ALD2 biogenic emissions for Oct



v11-02c - v11-02a  
ALD2 biogenic emissions for Oct



-4.21e+08

0.00e+00

4.21e+08 atoms

0.00e+00

atoms