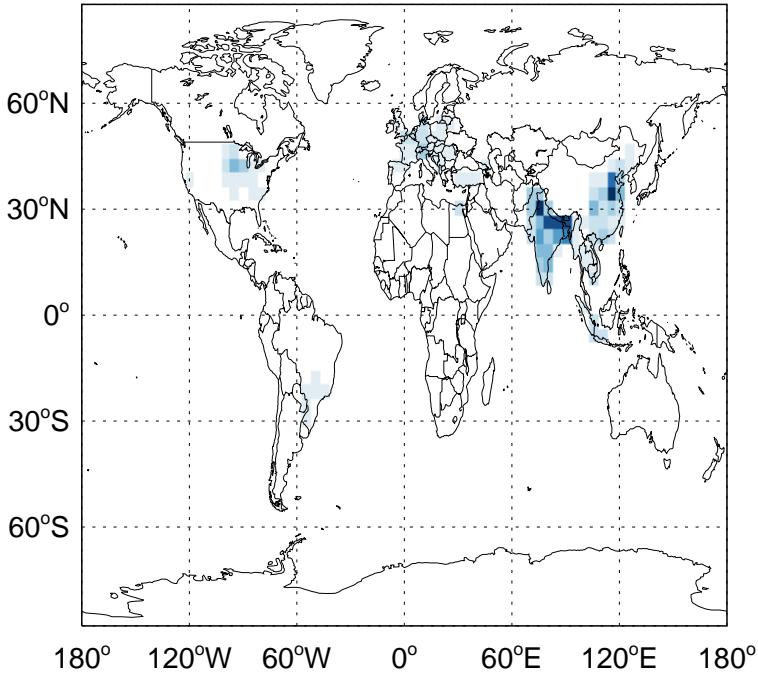


# GEOS-Chem Absolute Emission Differences

v11-02c - v11-01-public-Run0

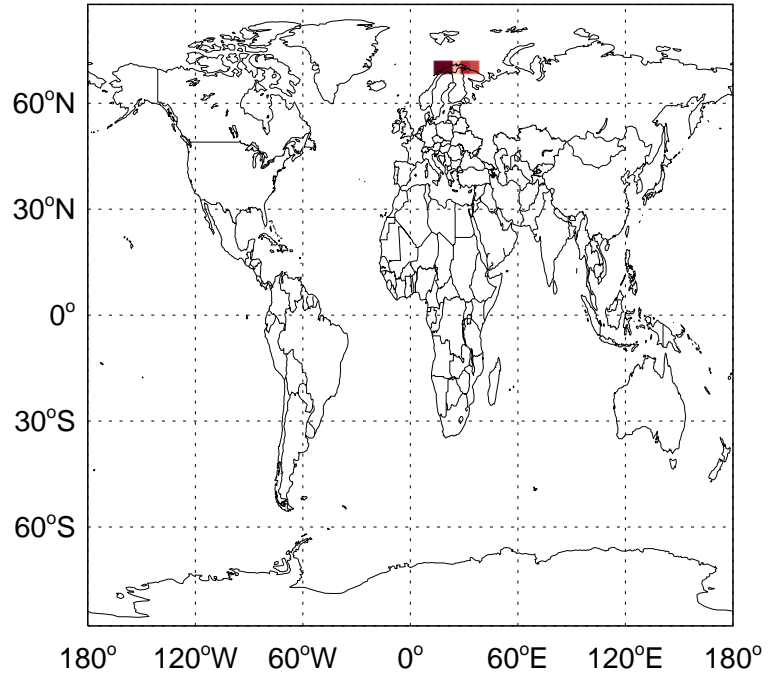
NH3 column anthro emissions for Apr



-7.35e+09 0.00e+00 7.35e+09kg

v11-02c - v11-02a

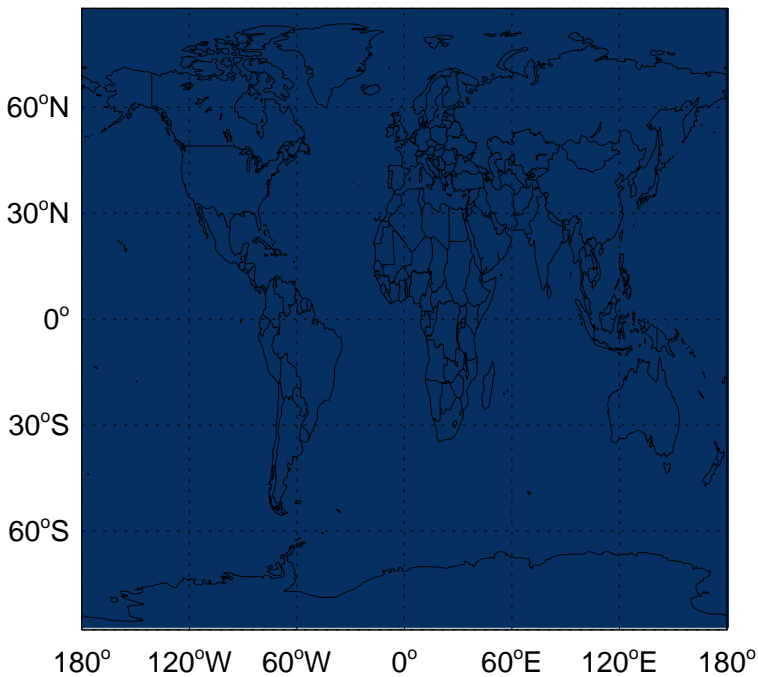
NH3 column anthro emissions for Apr



-4.29e+04 0.00e+00 4.29e+04kg

v11-02c - v11-01-public-Run0

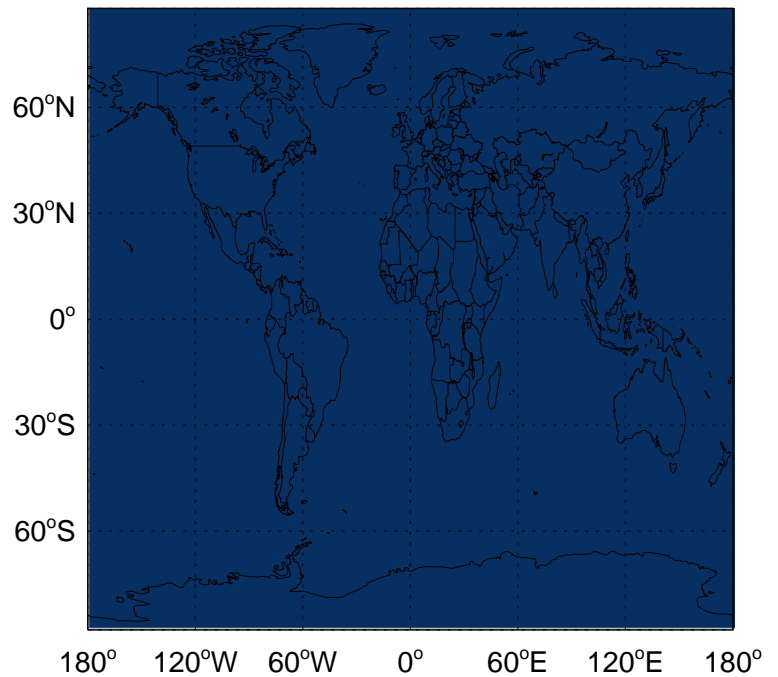
NH3 biofuel emissions for Apr



0.00e+00

v11-02c - v11-02a

NH3 biofuel emissions for Apr

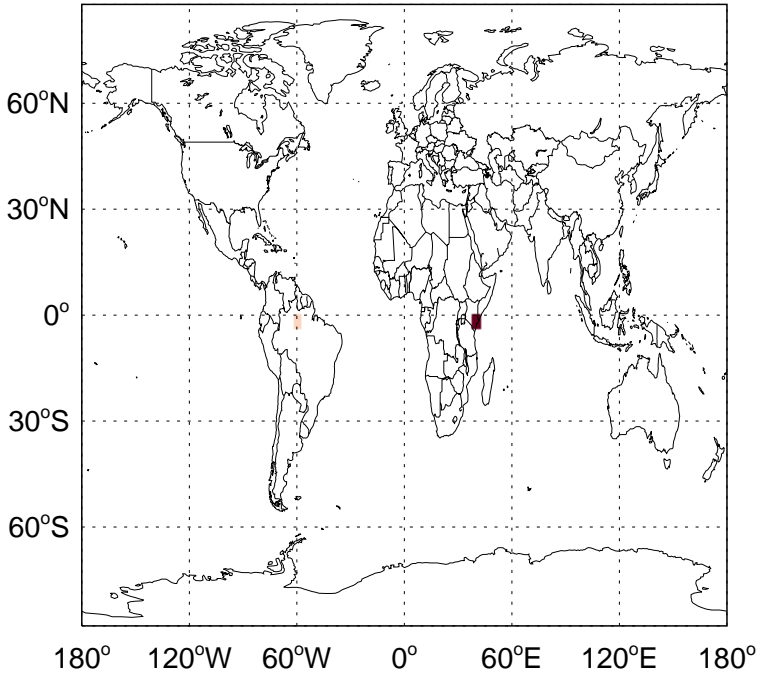


kg 0.00e+00 kg

# GEOS-Chem Absolute Emission Differences

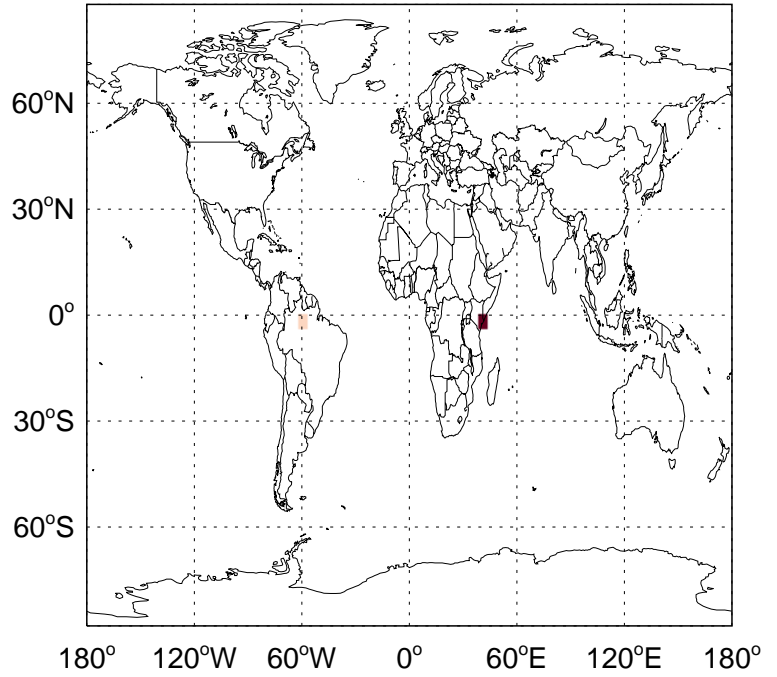
v11-02c - v11-01-public-Run0

NH3 biomass emissions for Apr



v11-02c - v11-02a

NH3 biomass emissions for Apr

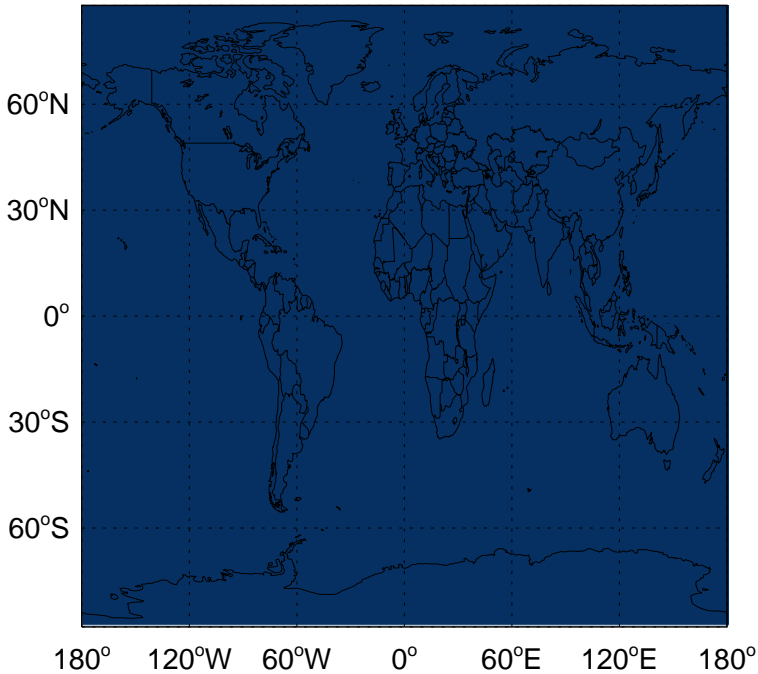


-3.91e-03 0.00e+00 3.91e-03kg

-3.91e-03 0.00e+00 3.91e-03kg

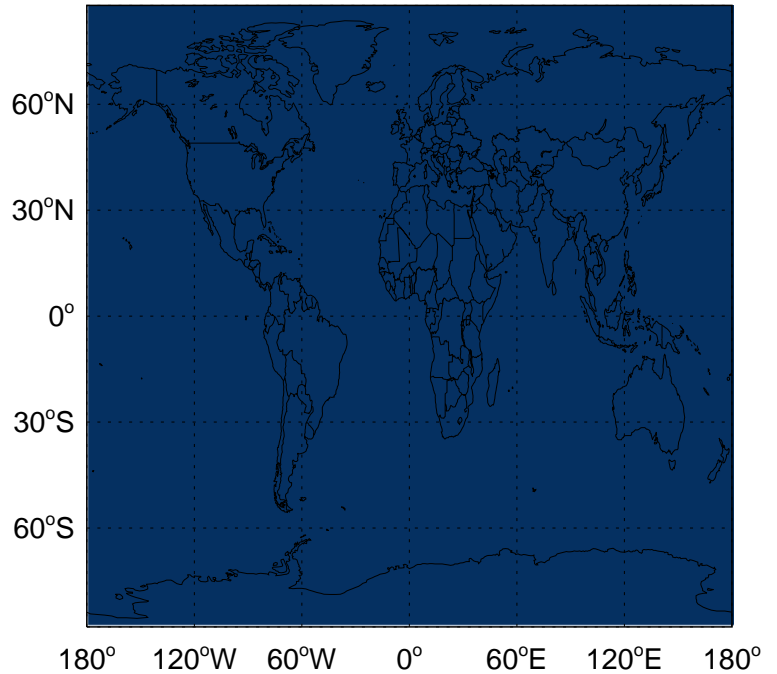
v11-02c - v11-01-public-Run0

NH3 natural src emissions for Apr



v11-02c - v11-02a

NH3 natural src emissions for Apr



0.00e+00

kg 0.00e+00 kg