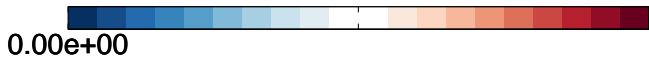
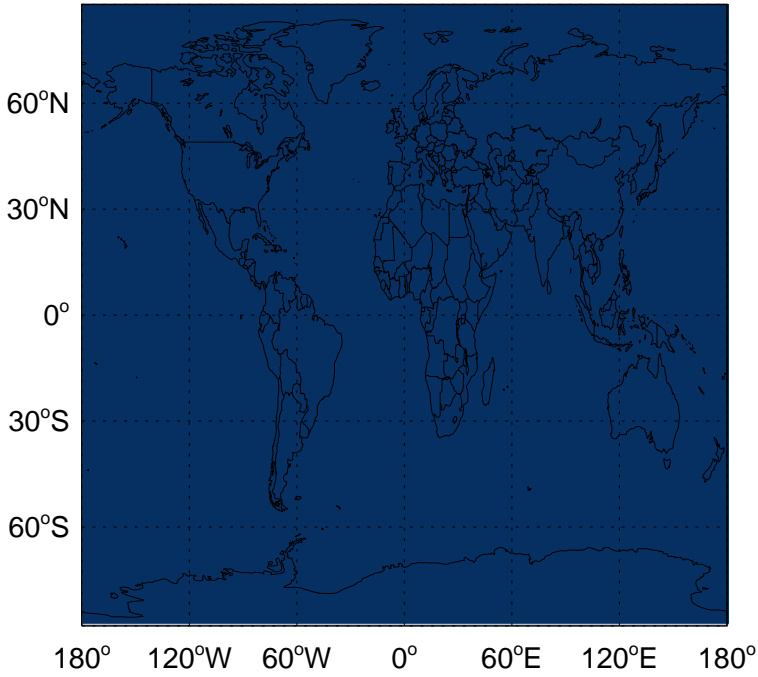


# GEOS-Chem Absolute Emission Differences

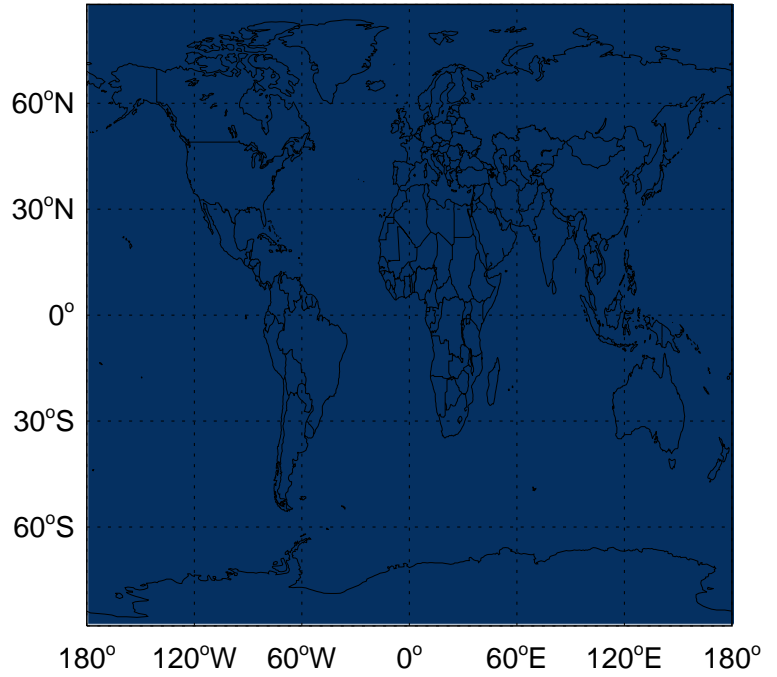
v11-02d - v11-02a

BC column anthro emissions for Apr



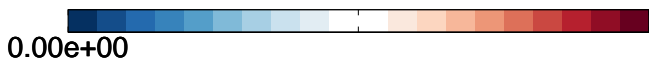
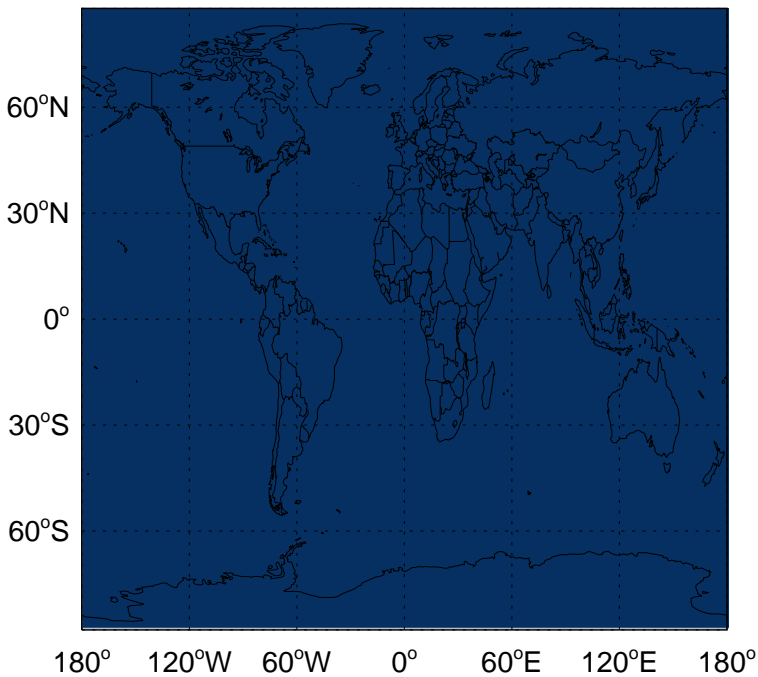
v11-02d - v11-02c

BC column anthro emissions for Apr



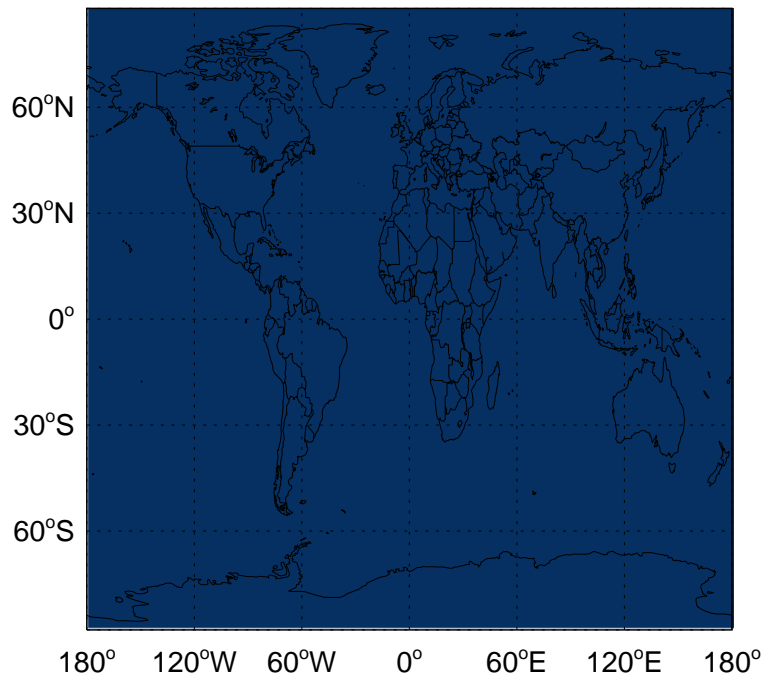
v11-02d - v11-02a

BC biofuel emissions for Apr



v11-02d - v11-02c

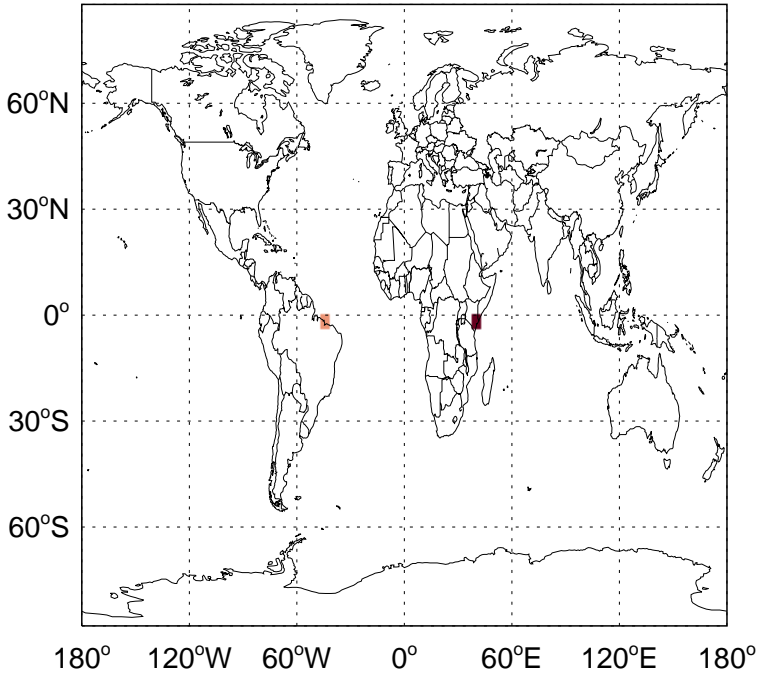
BC biofuel emissions for Apr



# GEOS-Chem Absolute Emission Differences

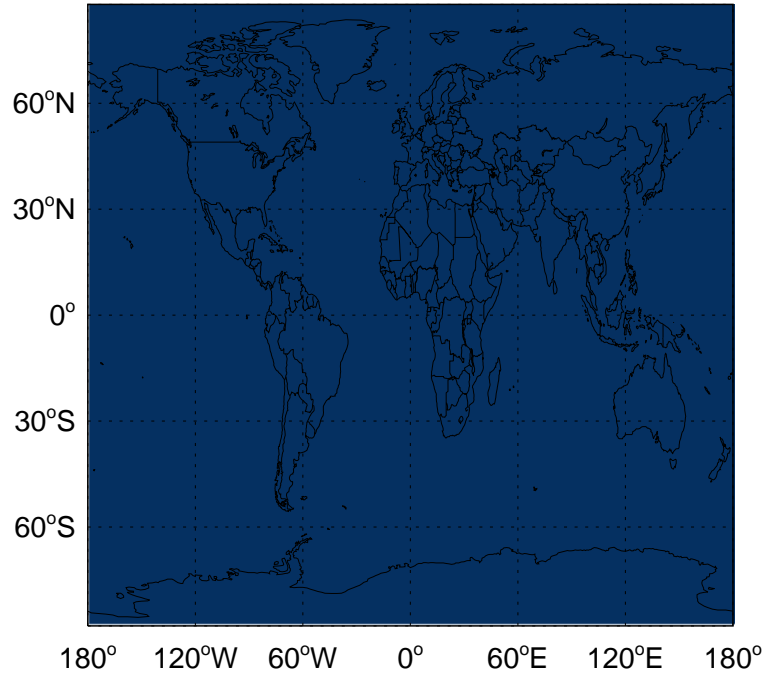
v11-02d - v11-02a

BC biomass emissions for Apr



v11-02d - v11-02c

BC biomass emissions for Apr



-5.86e-03

0.00e+00

5.86e-03kg C

0.00e+00

kg C