

# GEOS-Chem Absolute Emission Differences

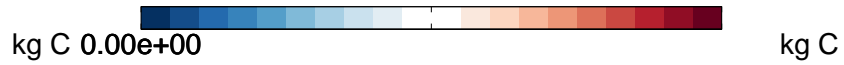
v11-02d - v11-02a

BC column anthro emissions for Apr



v11-02d - v11-02c

BC column anthro emissions for Apr



v11-02d - v11-02a

BC biofuel emissions for Apr



v11-02d - v11-02c

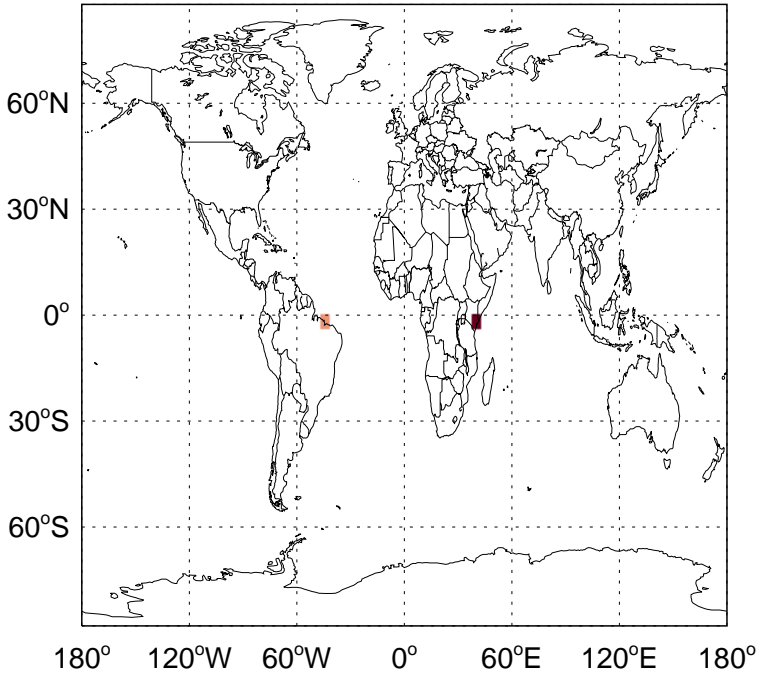
BC biofuel emissions for Apr



# GEOS-Chem Absolute Emission Differences

v11-02d - v11-02a

BC biomass emissions for Apr



v11-02d - v11-02c

BC biomass emissions for Apr

