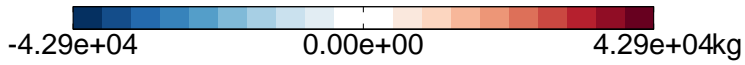
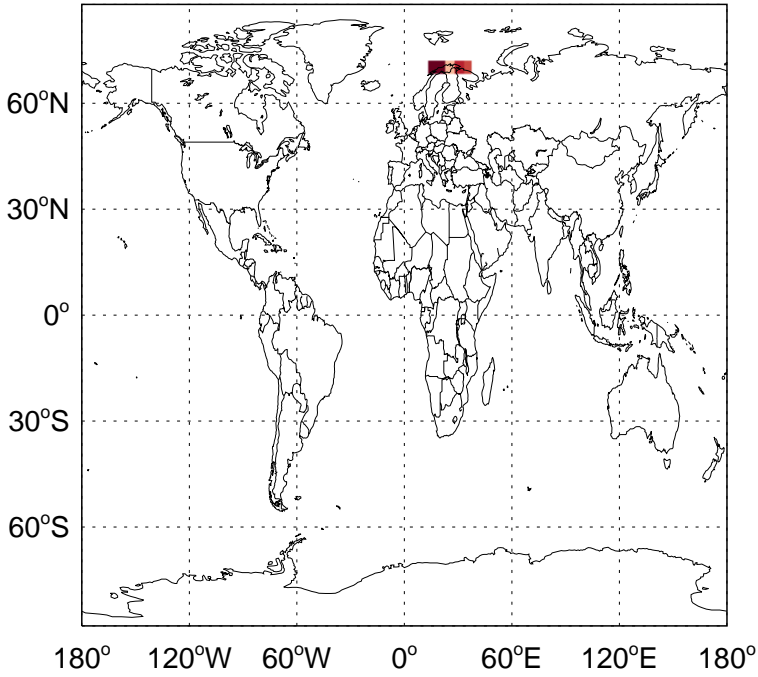


GEOS-Chem Absolute Emission Differences

v11-02d - v11-02a

NH3 column anthro emissions for Apr



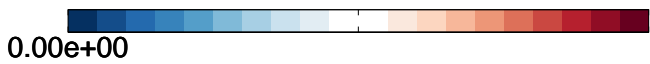
v11-02d - v11-02c

NH3 column anthro emissions for Apr



v11-02d - v11-02a

NH3 biofuel emissions for Apr



v11-02d - v11-02c

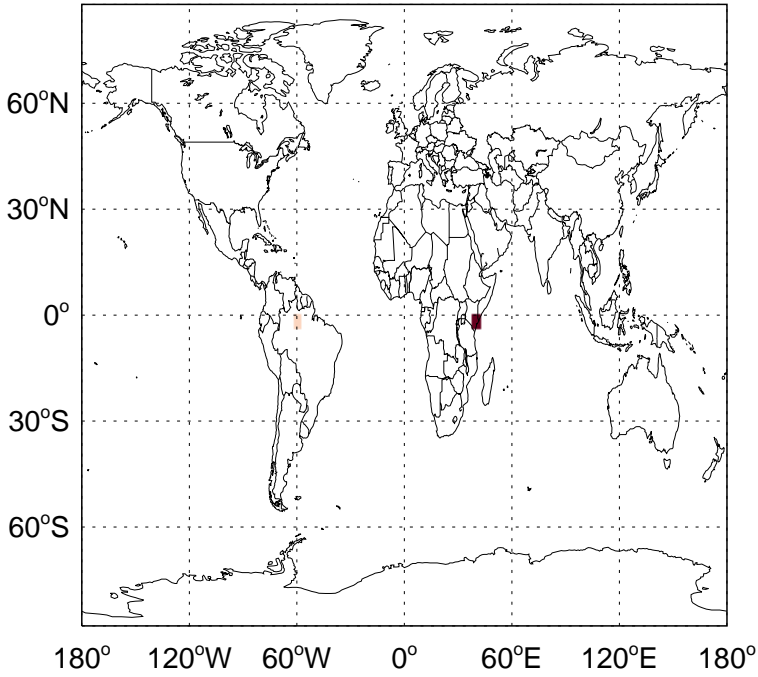
NH3 biofuel emissions for Apr



GEOS-Chem Absolute Emission Differences

v11-02d - v11-02a

NH3 biomass emissions for Apr



-3.91e-03 0.00e+00 3.91e-03kg

v11-02d - v11-02c

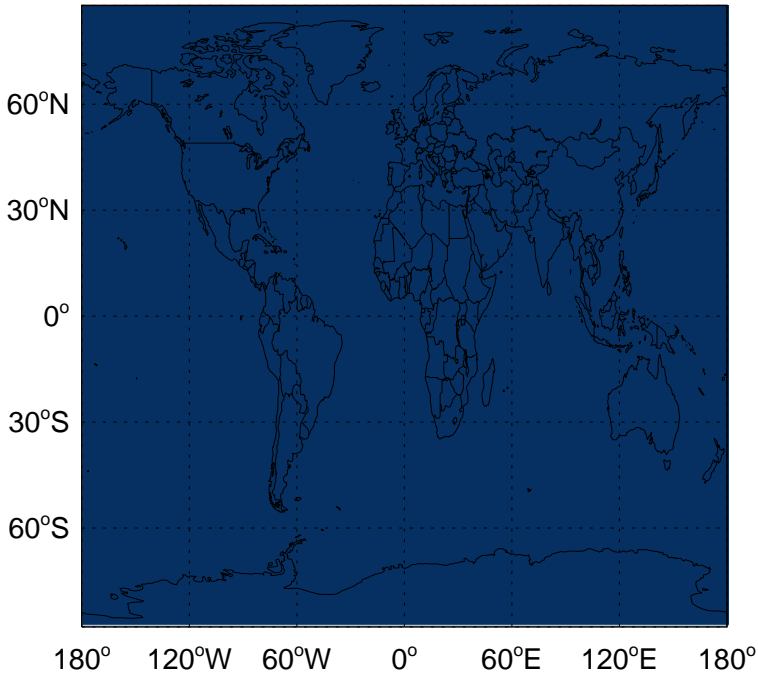
NH3 biomass emissions for Apr



0.00e+00 kg

v11-02d - v11-02a

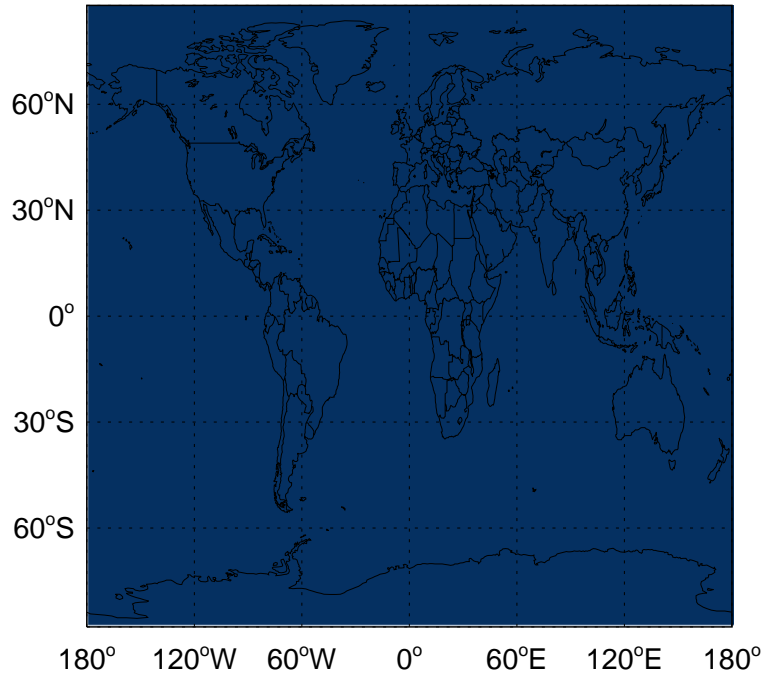
NH3 natural src emissions for Apr



0.00e+00

v11-02d - v11-02c

NH3 natural src emissions for Apr



kg 0.00e+00 kg