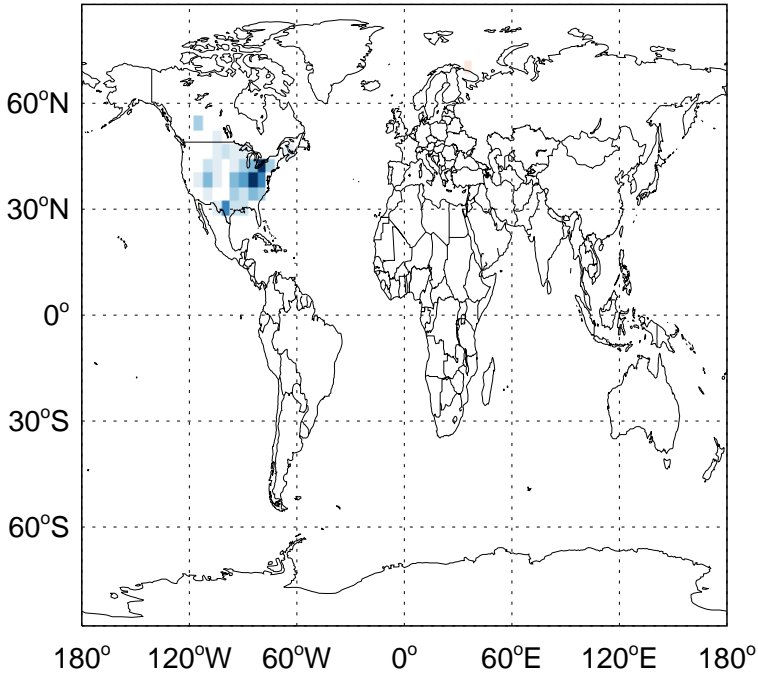


# GEOS-Chem Absolute Emission Differences

v11-02d - v11-02a

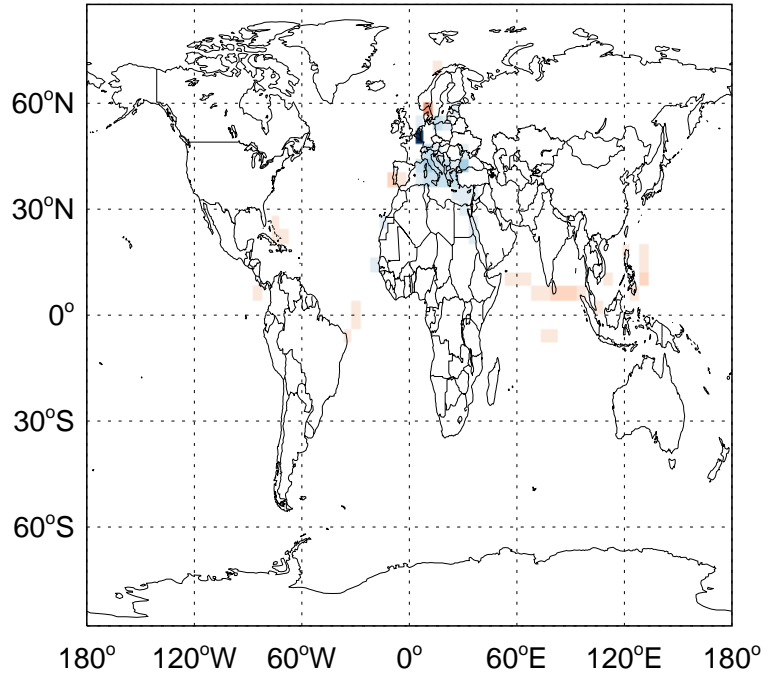
NO column anth+biof emissions for Jan



-4.02e+10 0.00e+00 4.02e+10 molecules/cm<sup>2</sup>/s

v11-02d - v11-02c

NO column anth+biof emissions for Jan



-2.62e+08 0.00e+00 2.62e+08 molecules/cm<sup>2</sup>/s

v11-02d - v11-02a

NO column aircraft emissions for Jan



0.00e+00

v11-02d - v11-02c

NO column aircraft emissions for Jan

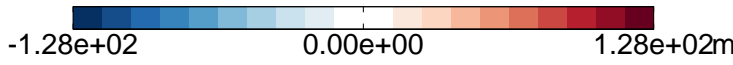
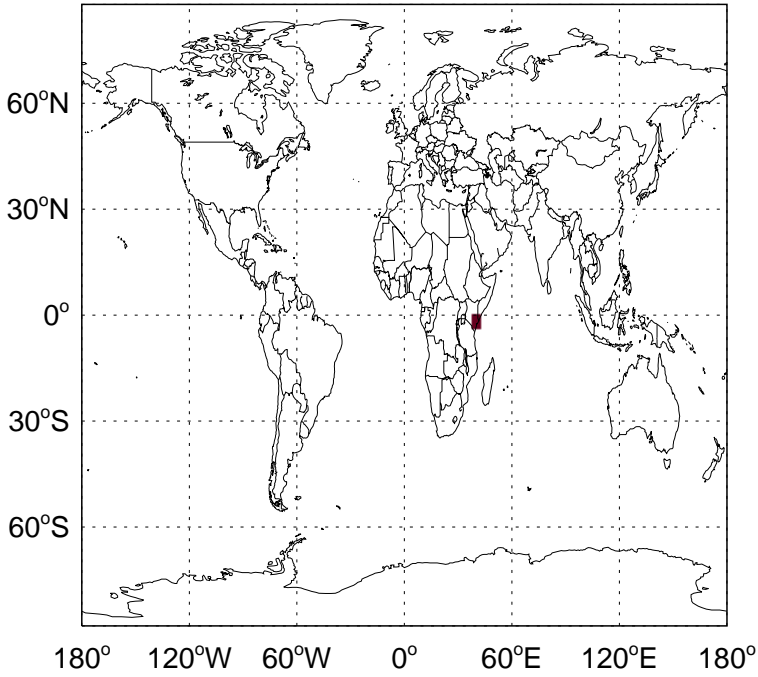


0.00e+00 molecules/cm<sup>2</sup>/s

# GEOS-Chem Absolute Emission Differences

v11-02d - v11-02a

NO biomass emissions for Jan



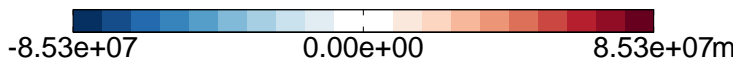
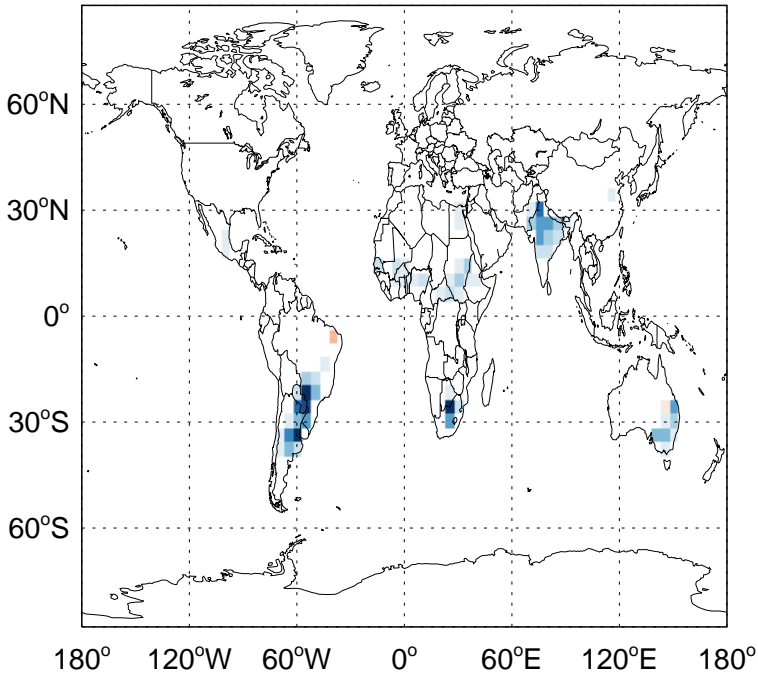
v11-02d - v11-02c

NO biomass emissions for Jan



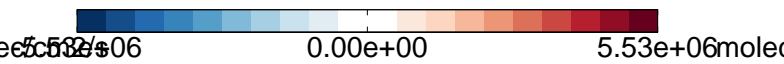
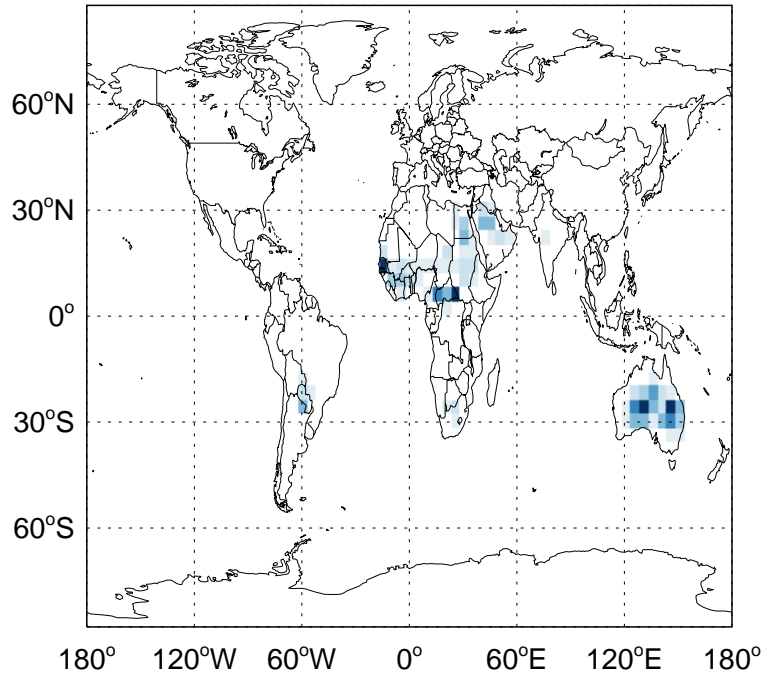
v11-02d - v11-02a

NO fertilizer emissions for Jan



v11-02d - v11-02c

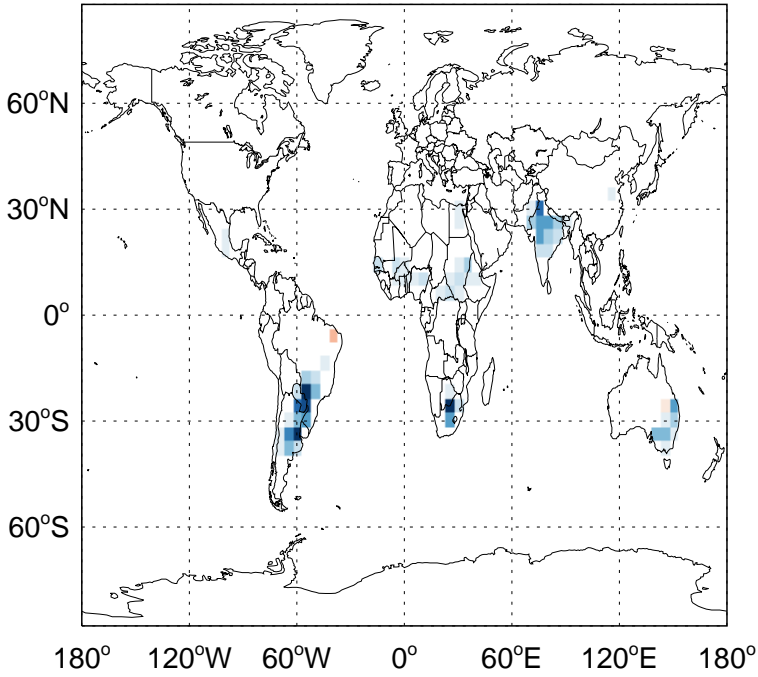
NO fertilizer emissions for Jan



# GEOS-Chem Absolute Emission Differences

v11-02d - v11-02a

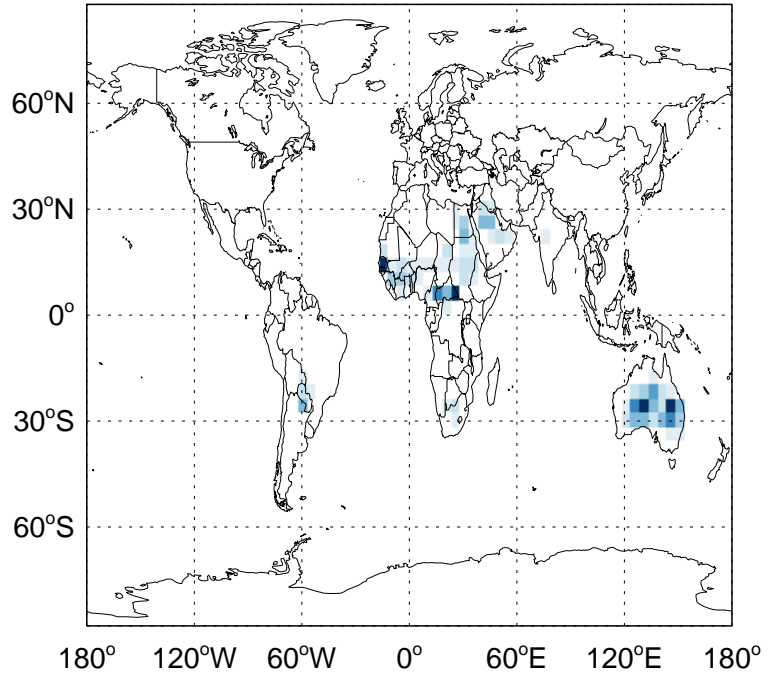
NO soil emissions for Jan



-8.52e+07 0.00e+00 8.52e+07 molecules cm<sup>-2</sup> s<sup>-1</sup>

v11-02d - v11-02c

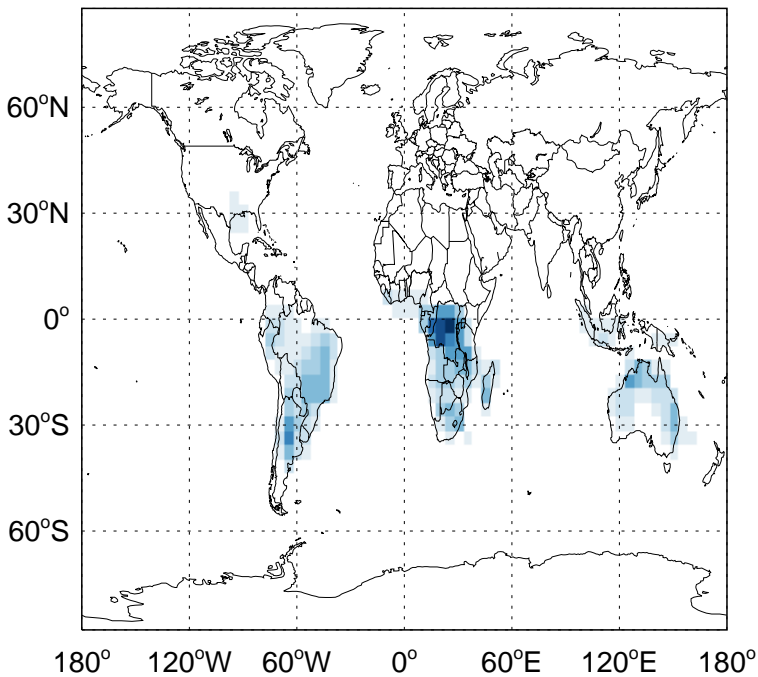
NO soil emissions for Jan



-5.54e+06 0.00e+00 5.54e+06 molecules cm<sup>-2</sup> s<sup>-1</sup>

v11-02d - v11-02a

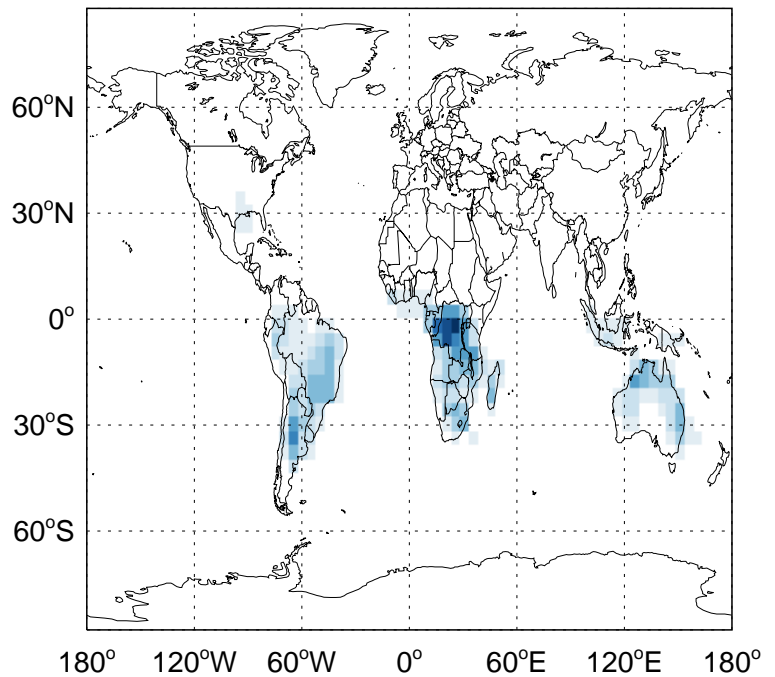
NO column lightning emissions for Jan



-9.08e+08 0.00e+00 9.08e+08 molecules cm<sup>-2</sup> s<sup>-1</sup>

v11-02d - v11-02c

NO column lightning emissions for Jan



-9.08e+08 0.00e+00 9.08e+08 molecules cm<sup>-2</sup> s<sup>-1</sup>