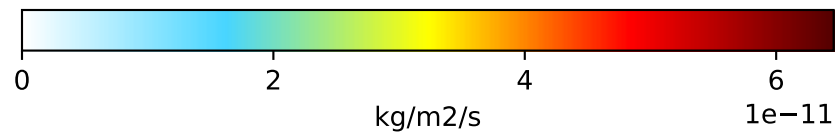
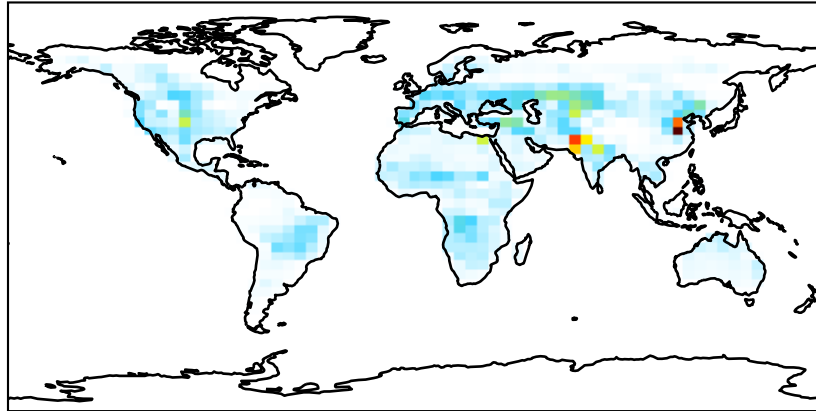
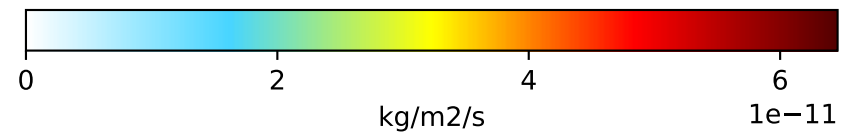
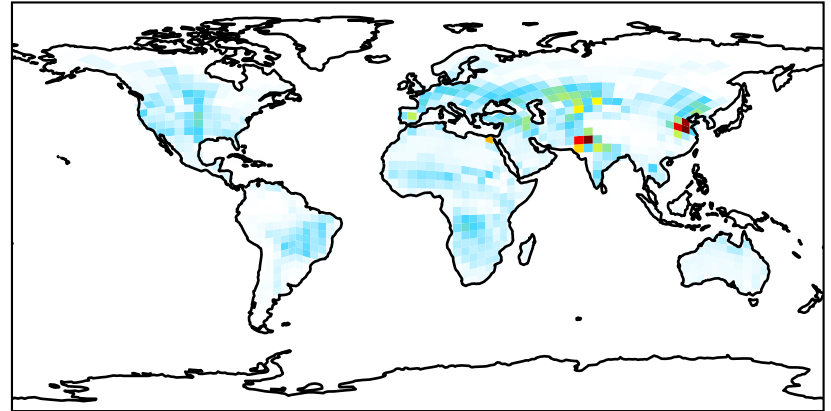


# EmisNO\_Soil

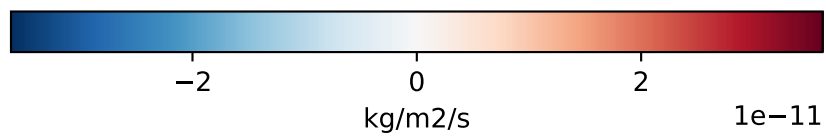
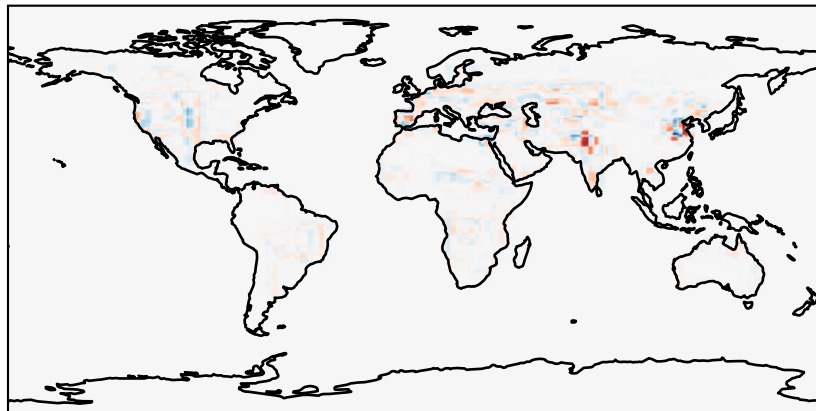
GCC\_14.2.0\_GEOS-FP (Ref)  
4.0x5.0



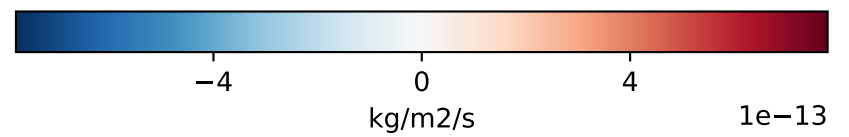
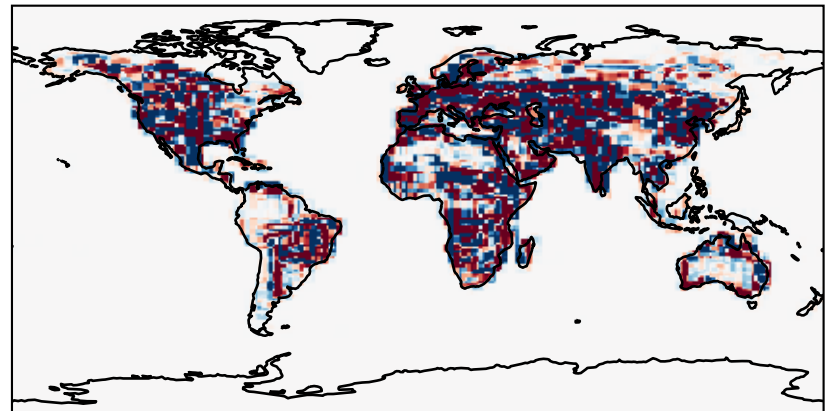
GCHP\_14.2.0\_GEOS-FP (Dev)  
c24



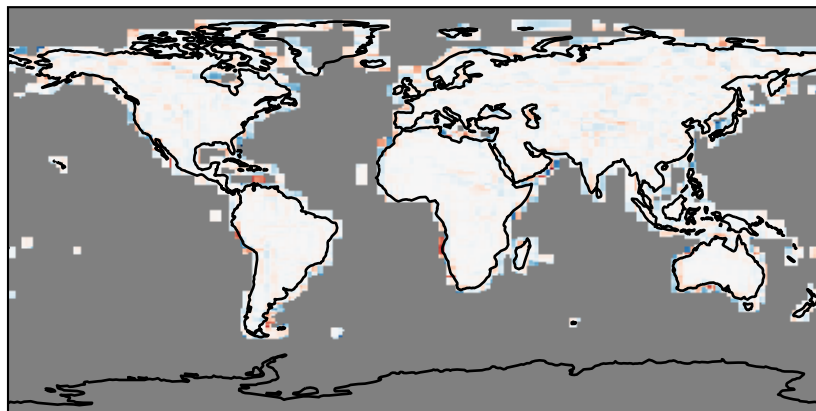
Difference (1x1.25)  
Dev - Ref, Dynamic Range



Difference (1x1.25)  
Dev - Ref, Restricted Range [5%,95%]



Ratio (1x1.25)  
Dev/Ref, Dynamic Range



Ratio (1x1.25)  
Dev/Ref, Fixed Range

