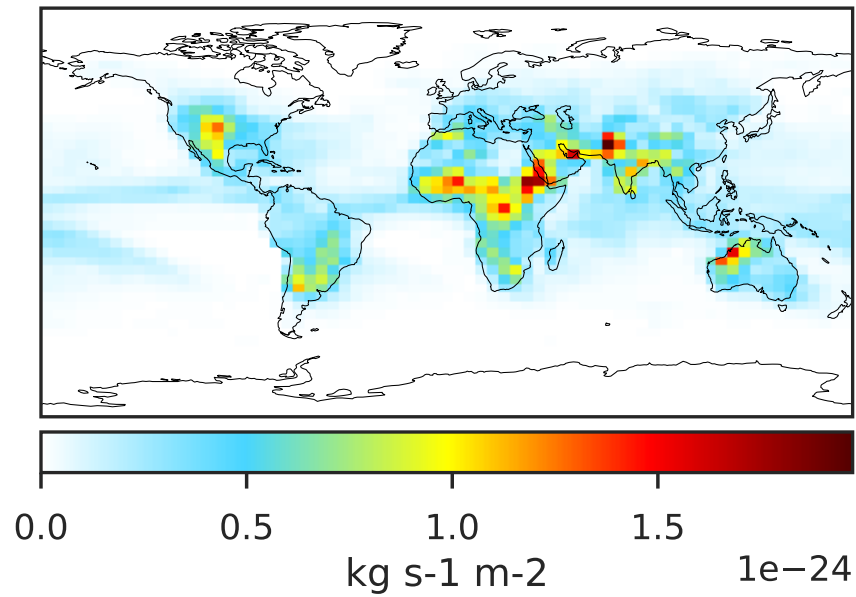
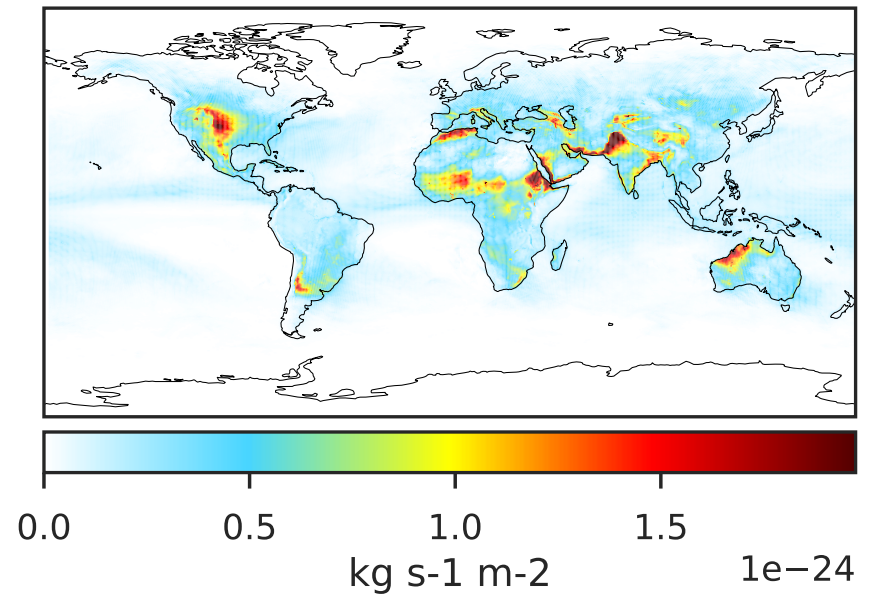


# WetLossConv\_Be10 (AnnualMean)

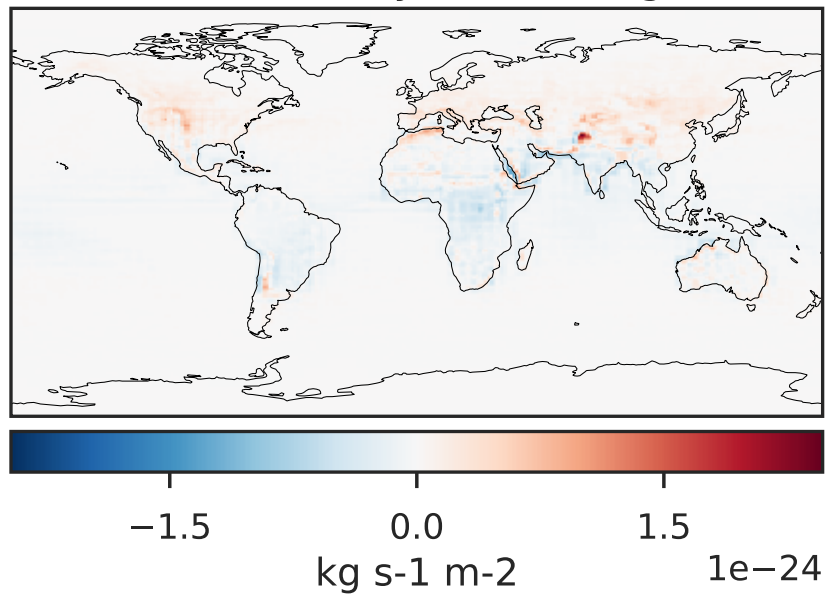
GCC 14.2.2 (Ref), Normalized by Area  
4.0x5.0



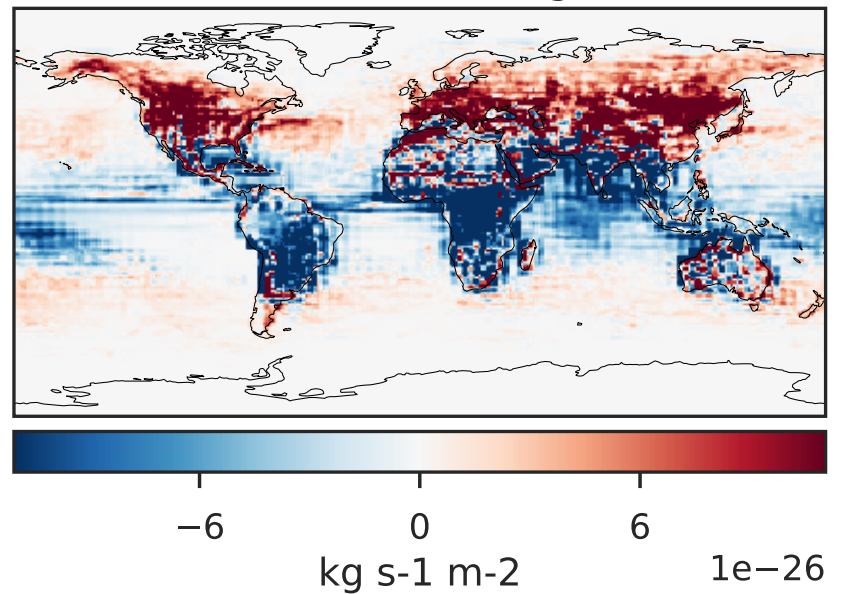
GCHP 14.2.2 using wind (Dev), Normalized by Area  
c180



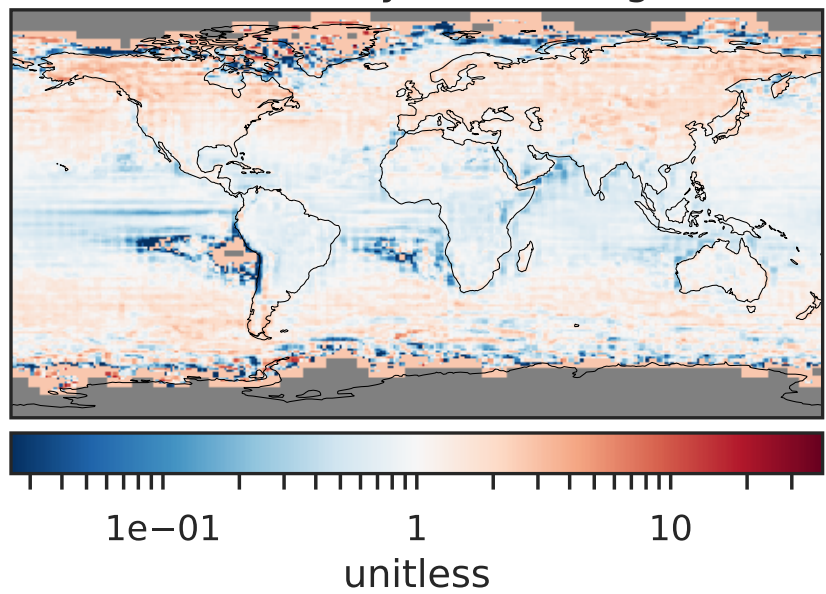
Difference (1x1.25)  
Dev - Ref, Dynamic Range



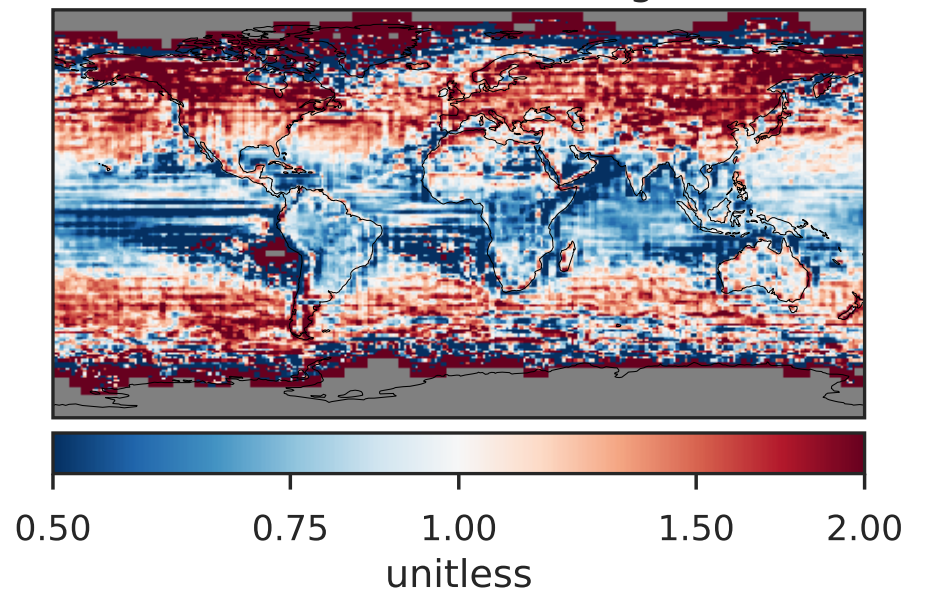
Difference (1x1.25)  
Dev - Ref, Restricted Range [5%,95%]



Ratio (1x1.25)  
Dev/Ref, Dynamic Range

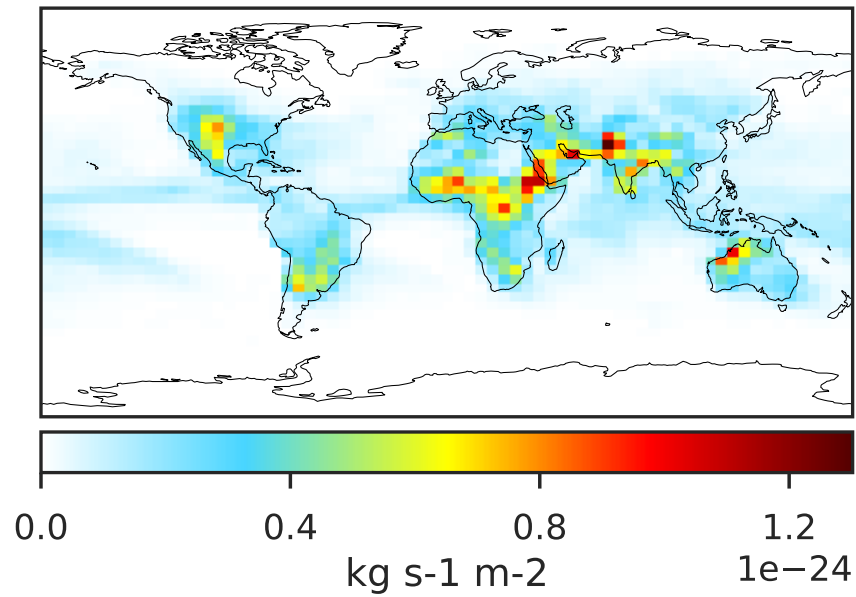


Ratio (1x1.25)  
Dev/Ref, Fixed Range

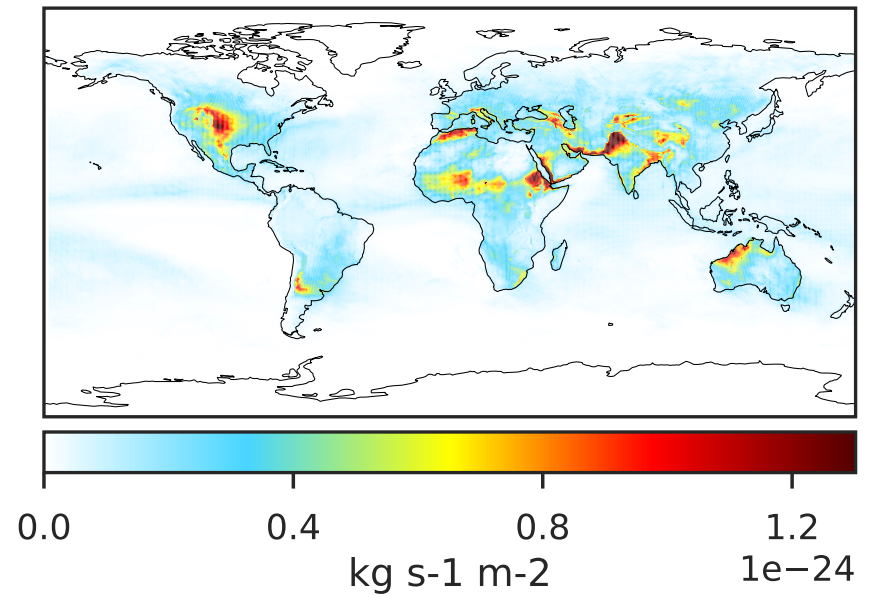


# WetLossConv\_Be10s (AnnualMean)

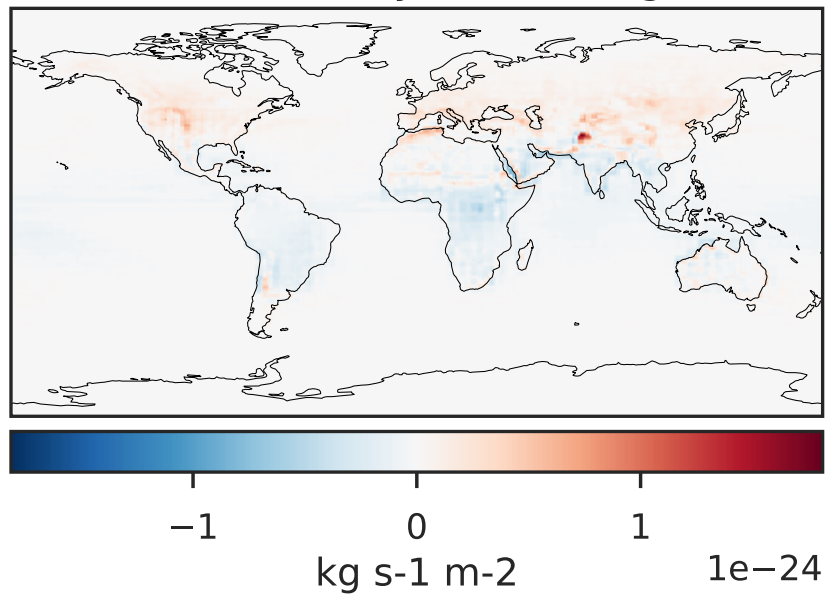
GCC 14.2.2 (Ref), Normalized by Area  
4.0x5.0



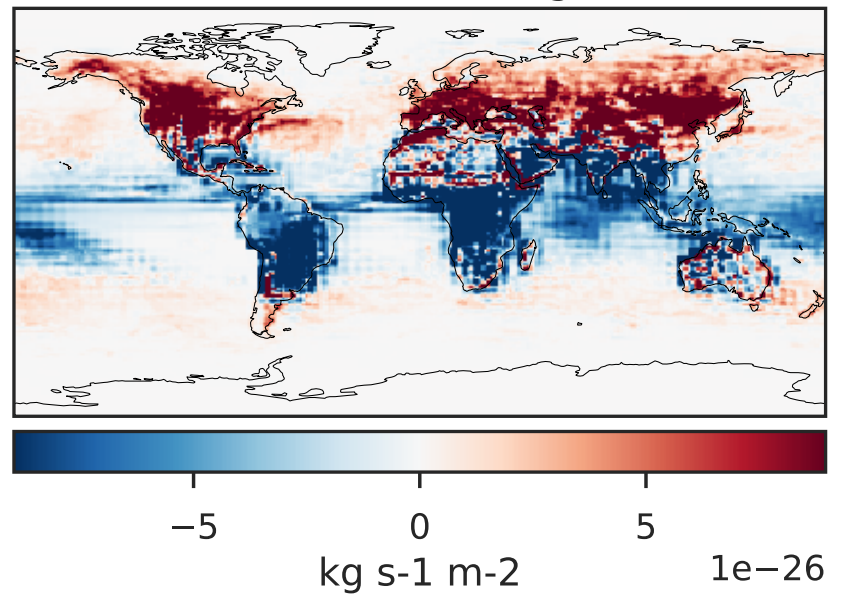
GCHP 14.2.2 using wind (Dev), Normalized by Area  
c180



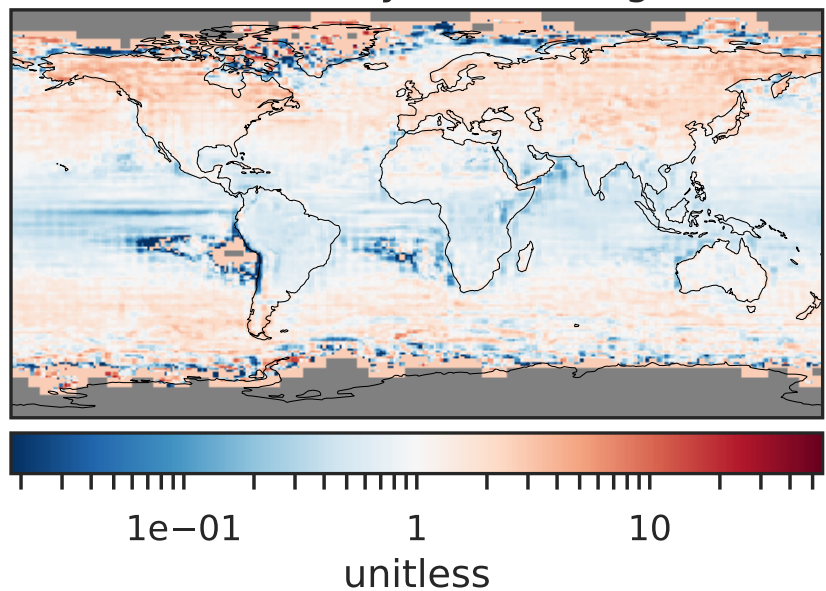
Difference (1x1.25)  
Dev - Ref, Dynamic Range



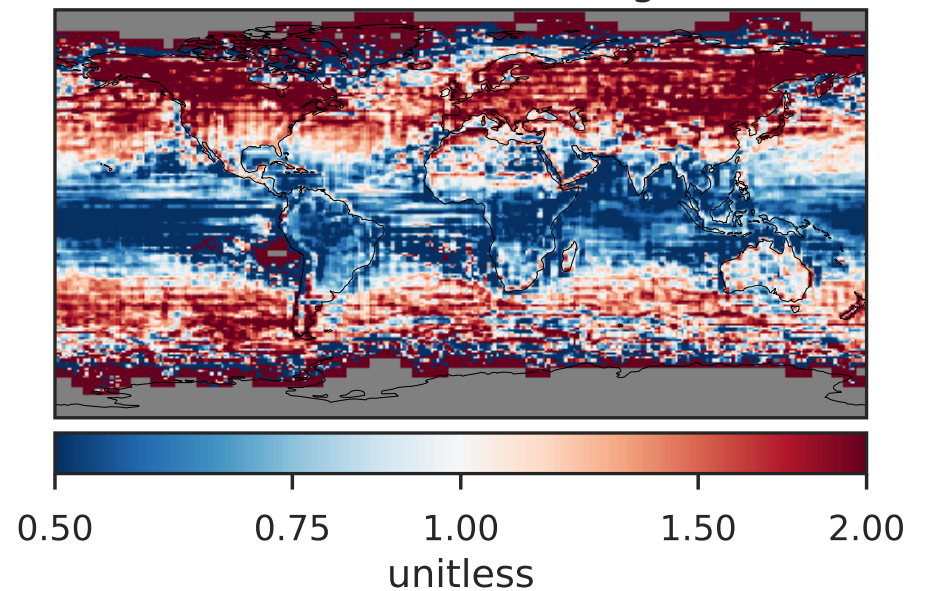
Difference (1x1.25)  
Dev - Ref, Restricted Range [5%,95%]



Ratio (1x1.25)  
Dev/Ref, Dynamic Range



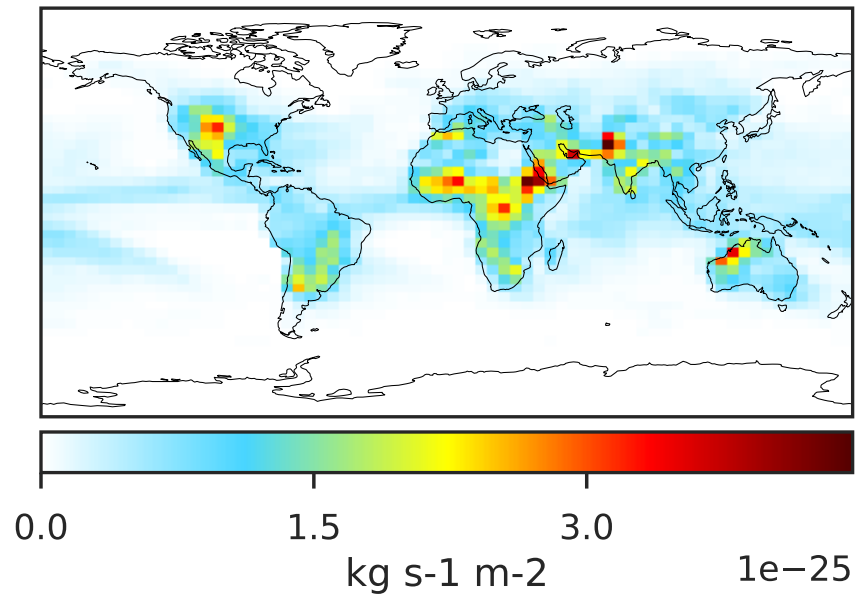
Ratio (1x1.25)  
Dev/Ref, Fixed Range



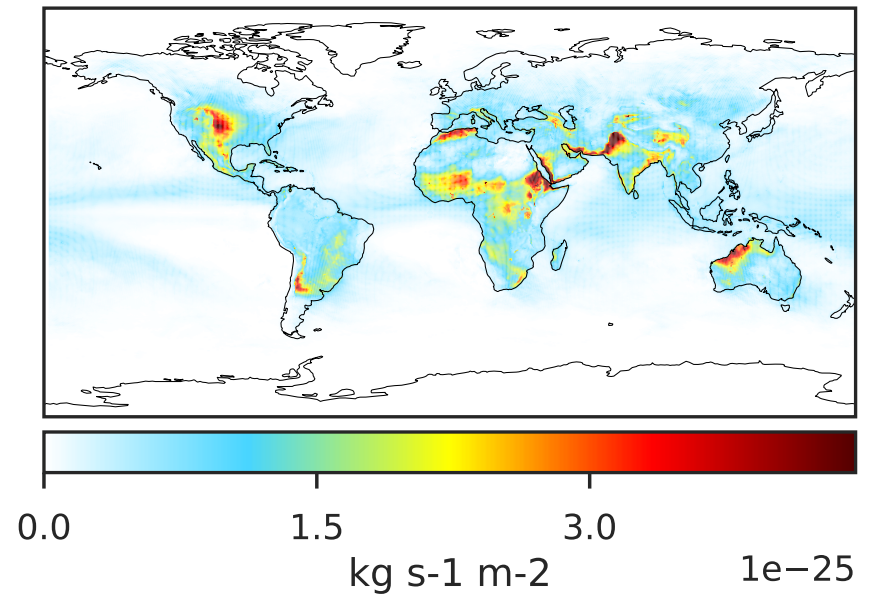


# WetLossConv\_Be7 (AnnualMean)

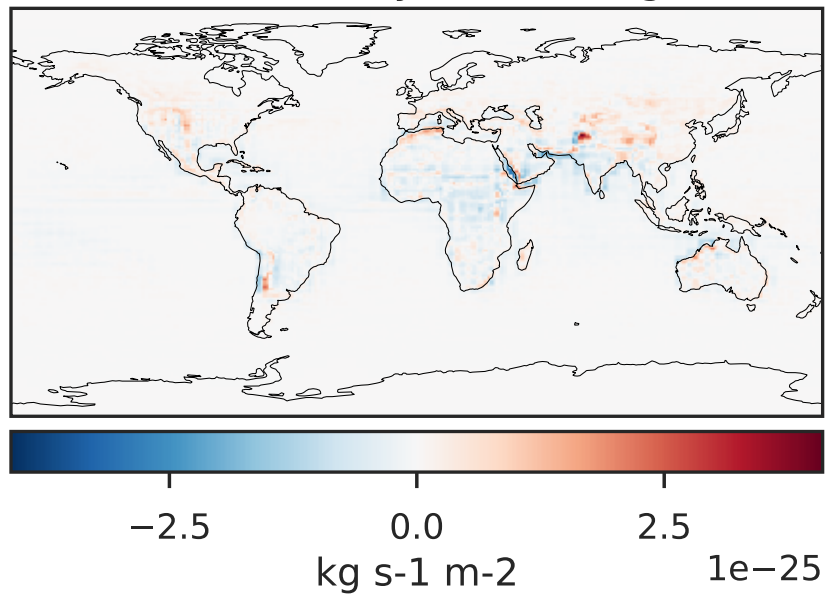
GCC 14.2.2 (Ref), Normalized by Area  
4.0x5.0



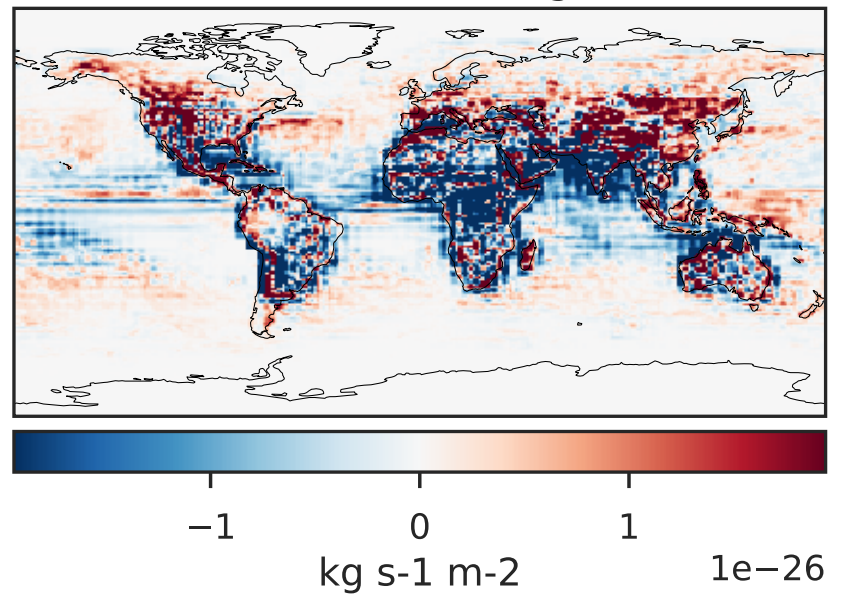
GCHP 14.2.2 using wind (Dev), Normalized by Area  
c180



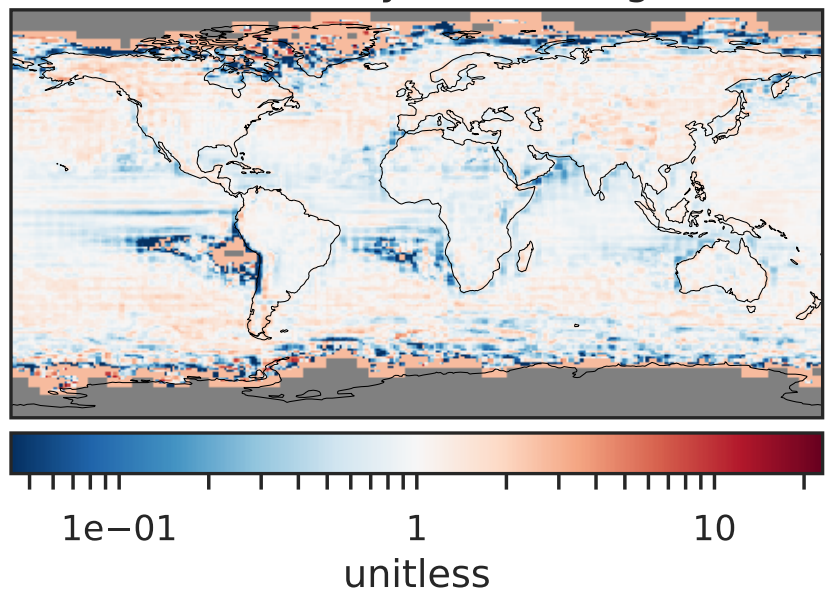
Difference (1x1.25)  
Dev - Ref, Dynamic Range



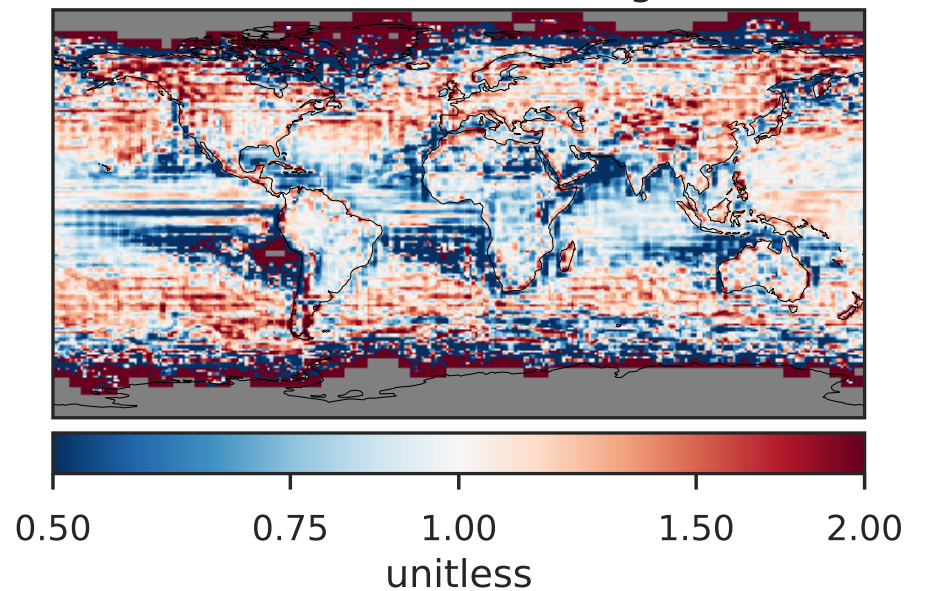
Difference (1x1.25)  
Dev - Ref, Restricted Range [5%,95%]



Ratio (1x1.25)  
Dev/Ref, Dynamic Range

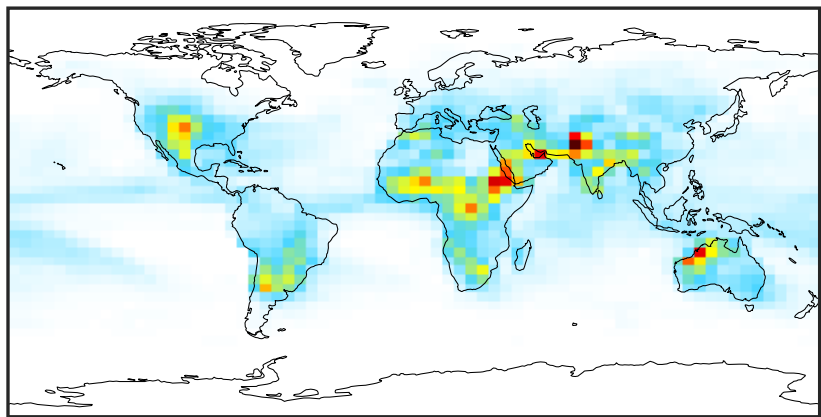


Ratio (1x1.25)  
Dev/Ref, Fixed Range



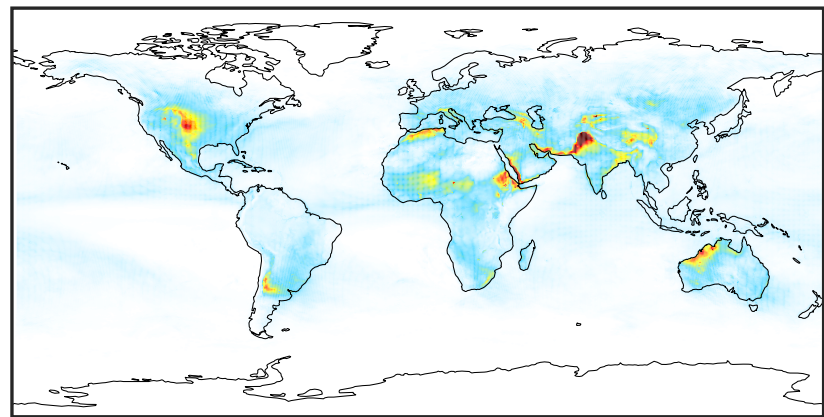
# WetLossConv\_Be7s (AnnualMean)

GCC 14.2.2 (Ref), Normalized by Area  
4.0x5.0



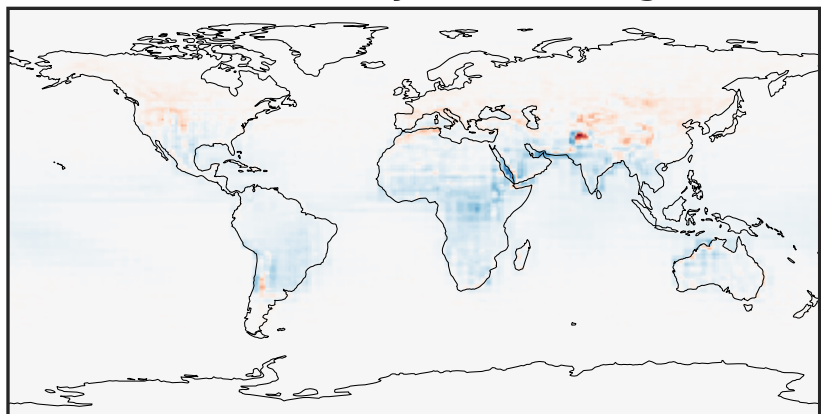
0.0 0.4 0.8 1.2  
kg s-1 m-2 1e-25

GCHP 14.2.2 using wind (Dev), Normalized by Area  
c180



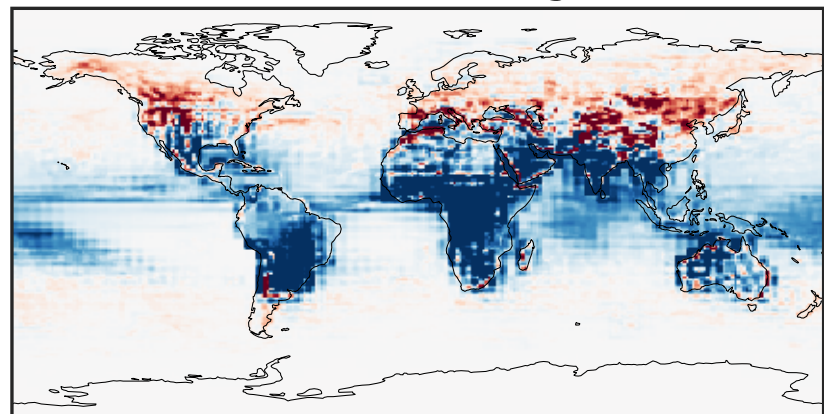
0.0 0.4 0.8 1.2  
kg s-1 m-2 1e-25

Difference (1x1.25)  
Dev - Ref, Dynamic Range



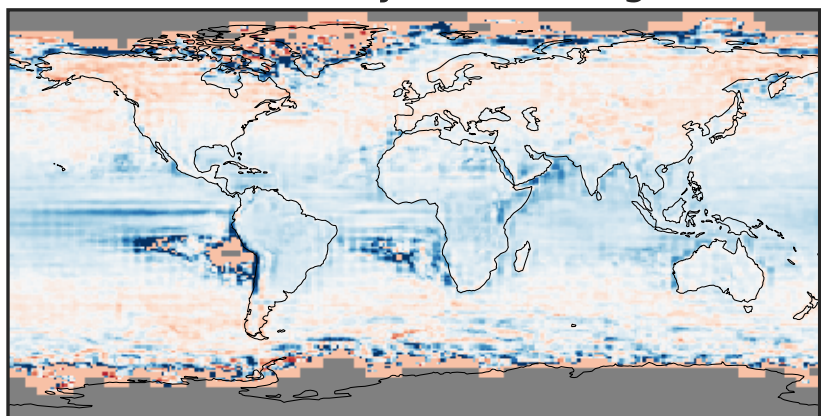
-6 0 6  
kg s-1 m-2 1e-26

Difference (1x1.25)  
Dev - Ref, Restricted Range [5%,95%]



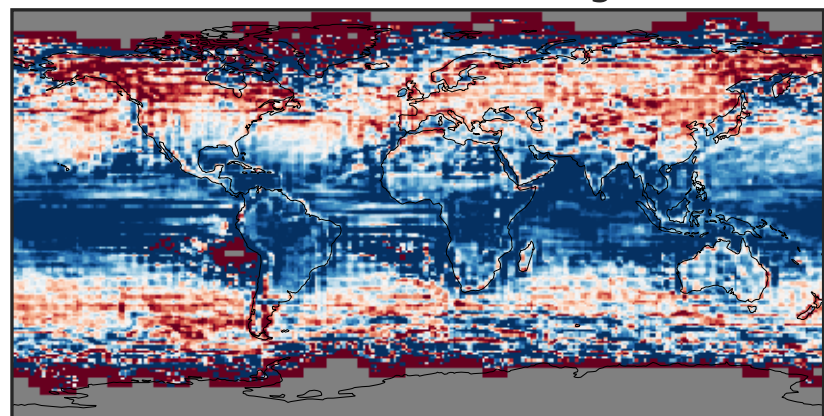
-6 0 6  
kg s-1 m-2 1e-27

Ratio (1x1.25)  
Dev/Ref, Dynamic Range



1e-01 1 10  
unitless

Ratio (1x1.25)  
Dev/Ref, Fixed Range

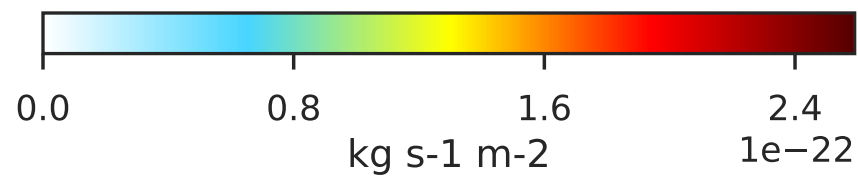
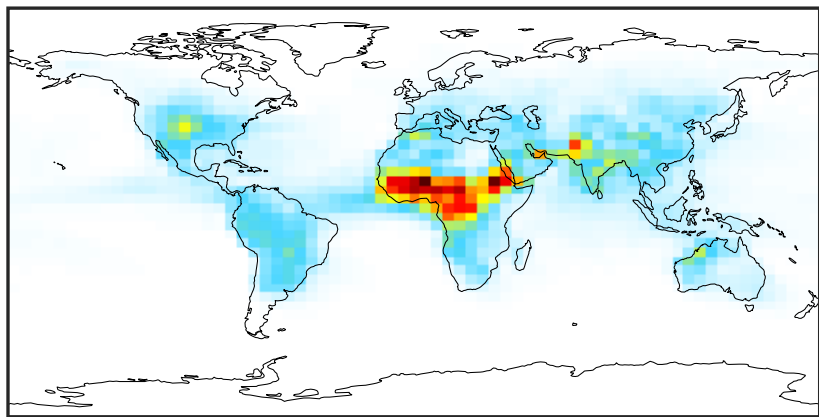


0.50 0.75 1.00 1.50 2.00  
unitless

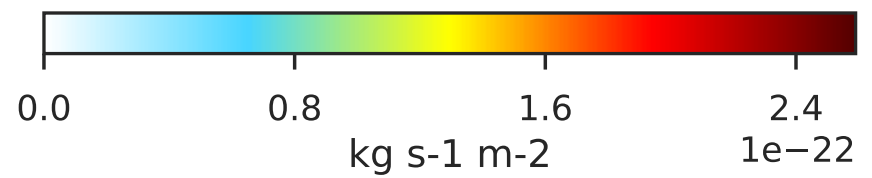
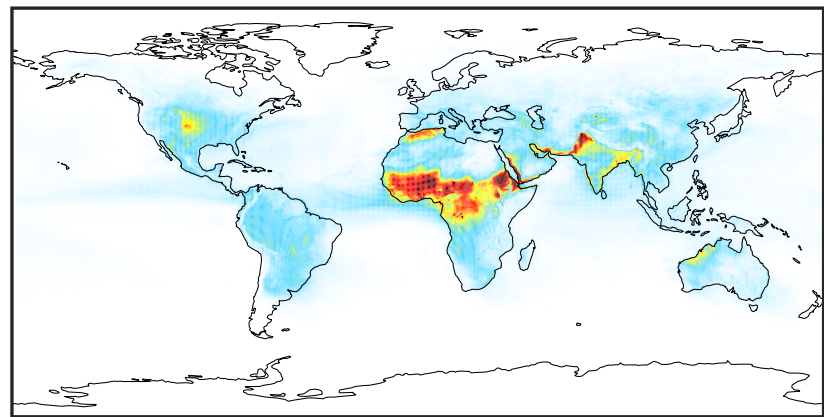


# WetLossConv\_Pb210 (AnnualMean)

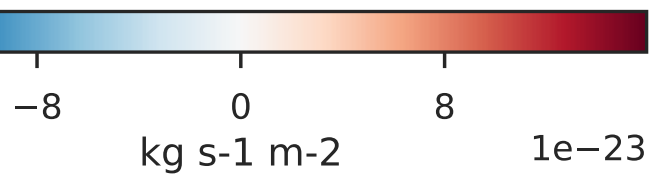
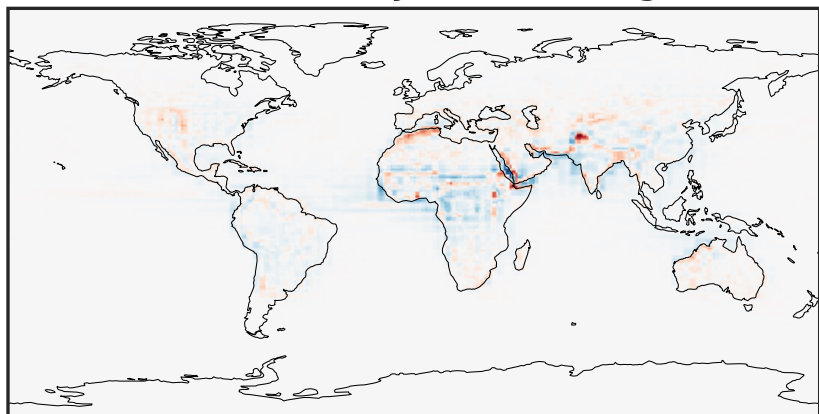
GCC 14.2.2 (Ref), Normalized by Area  
4.0x5.0



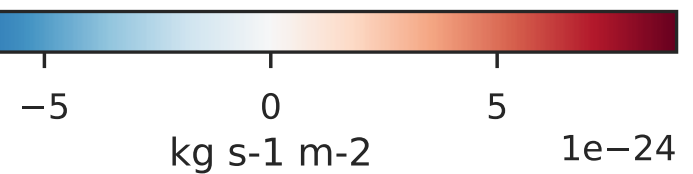
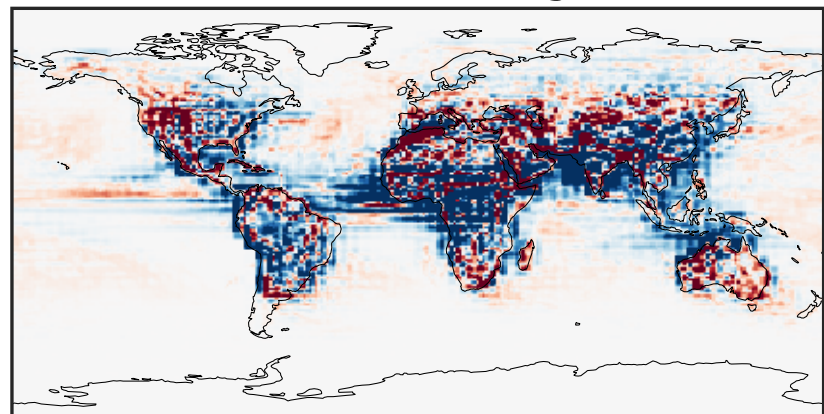
GCHP 14.2.2 using wind (Dev), Normalized by Area  
c180



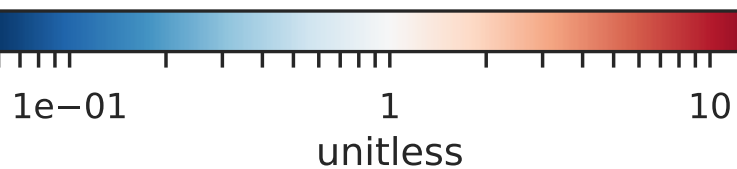
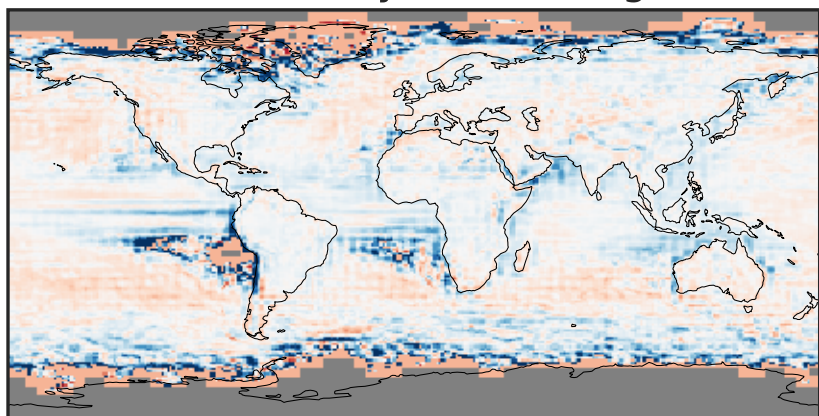
Difference (1x1.25)  
Dev - Ref, Dynamic Range



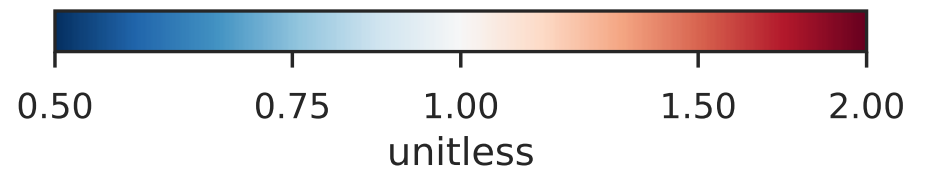
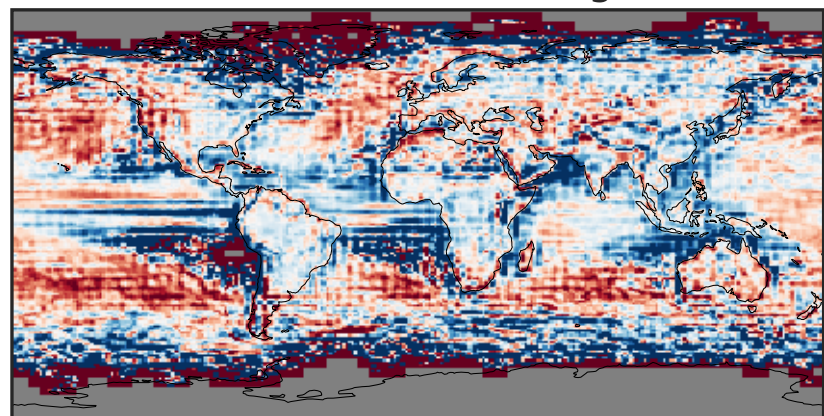
Difference (1x1.25)  
Dev - Ref, Restricted Range [5%,95%]



Ratio (1x1.25)  
Dev/Ref, Dynamic Range

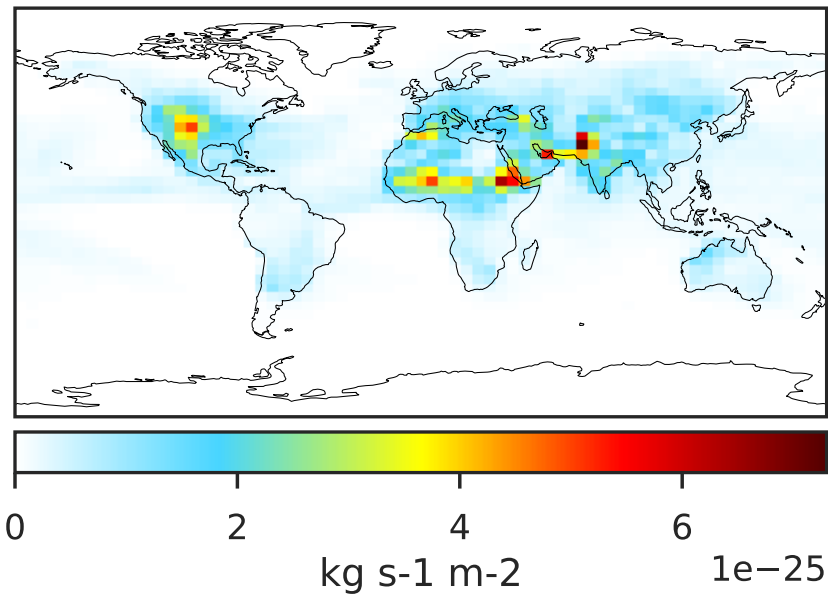


Ratio (1x1.25)  
Dev/Ref, Fixed Range

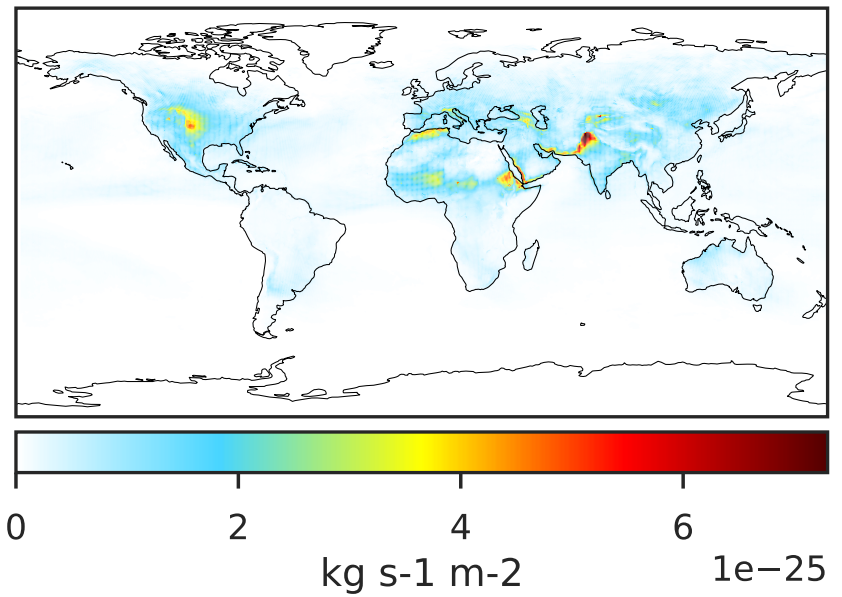


# WetLossConv\_Pb210s (AnnualMean)

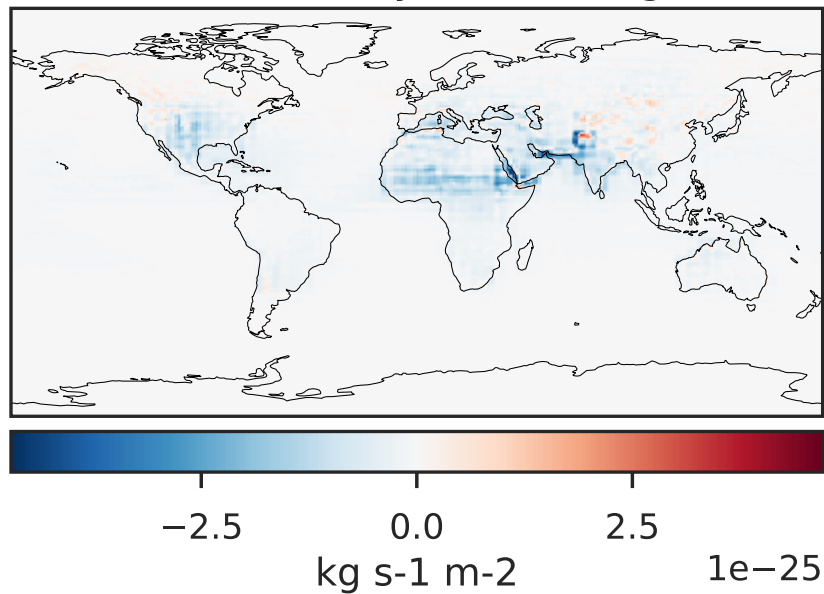
GCC 14.2.2 (Ref), Normalized by Area  
4.0x5.0



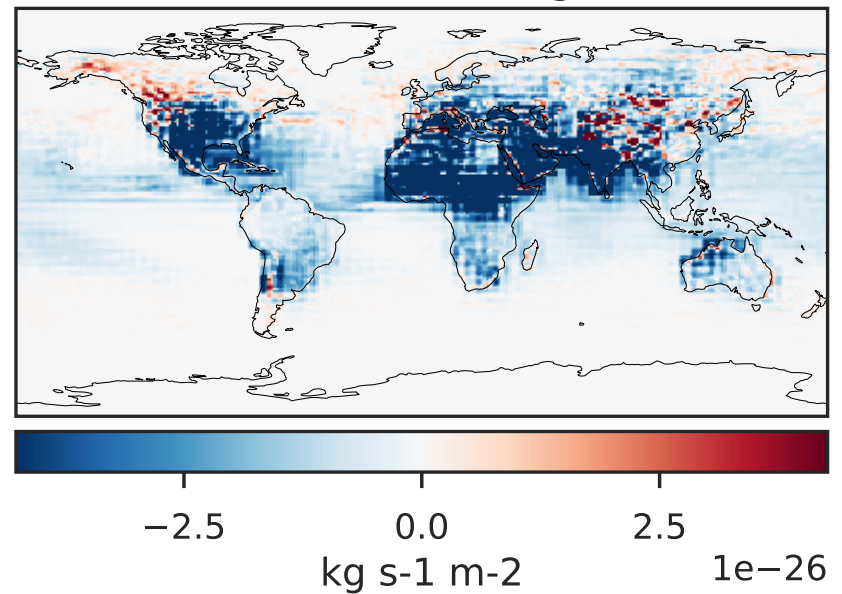
GCHP 14.2.2 using wind (Dev), Normalized by Area  
c180



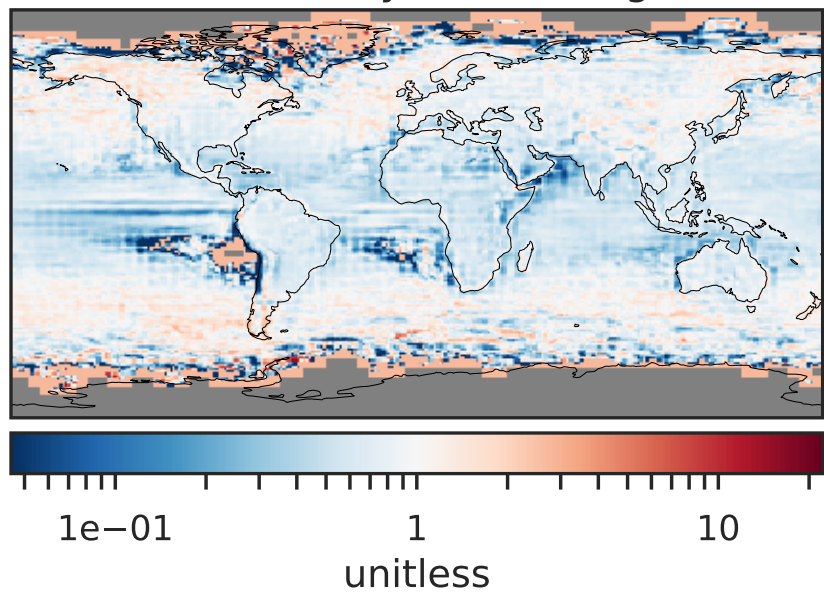
Difference (1x1.25)  
Dev - Ref, Dynamic Range



Difference (1x1.25)  
Dev - Ref, Restricted Range [5%,95%]



Ratio (1x1.25)  
Dev/Ref, Dynamic Range



Ratio (1x1.25)  
Dev/Ref, Fixed Range

