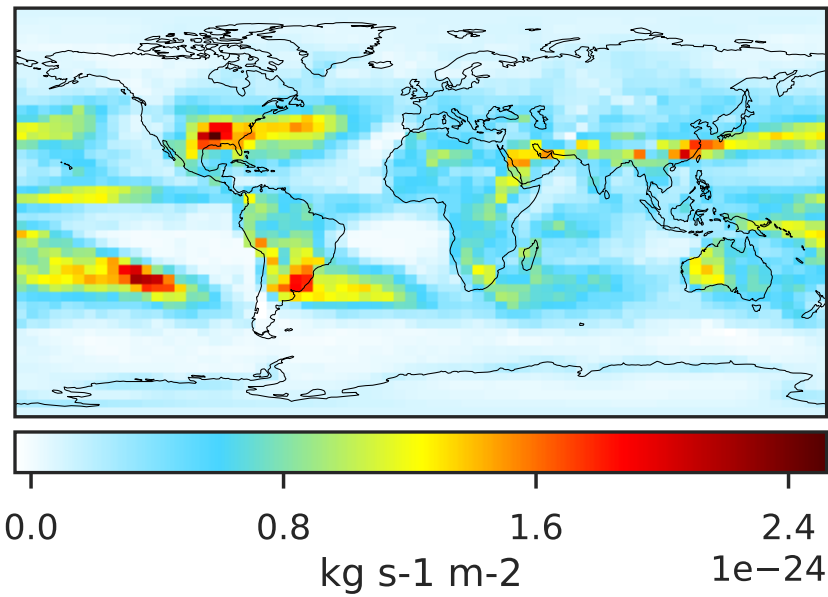
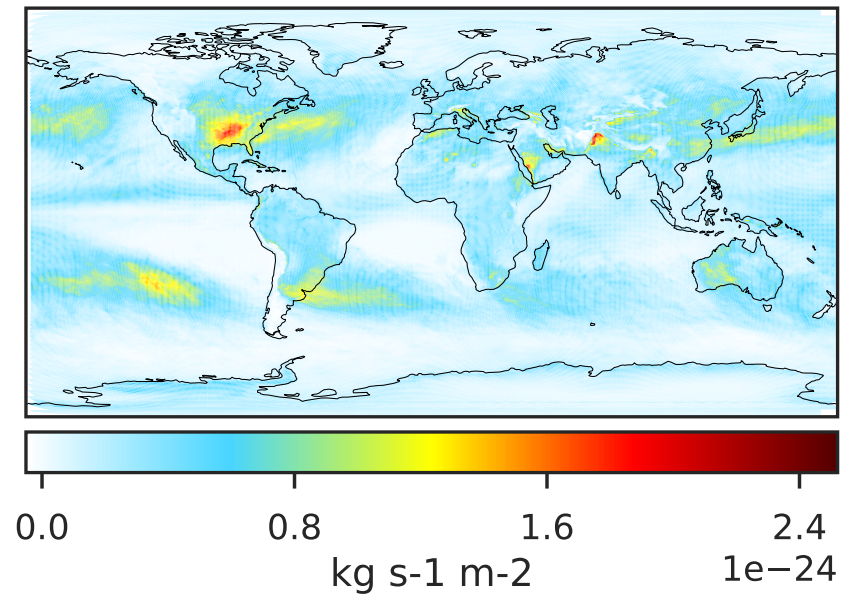


# WetLossLS\_Be10 (AnnualMean)

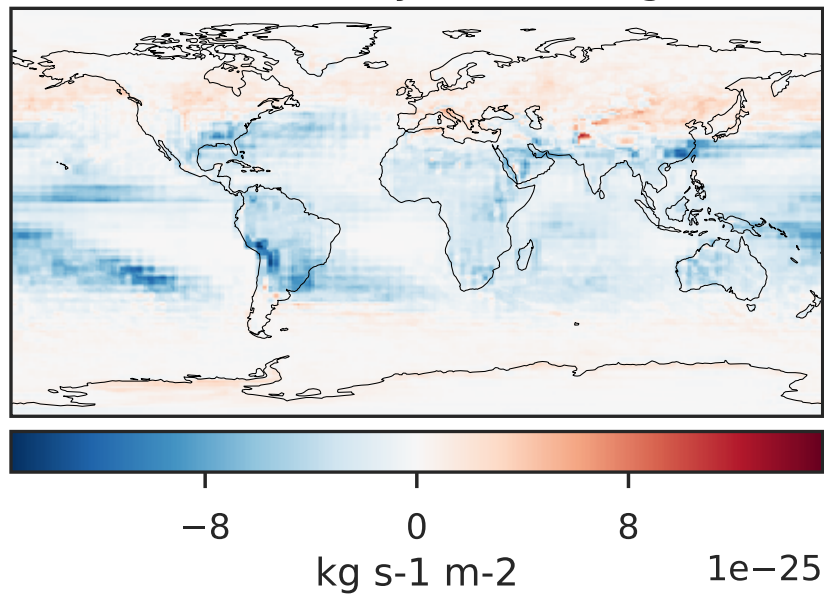
GCC 14.2.2 (Ref), Normalized by Area  
4.0x5.0



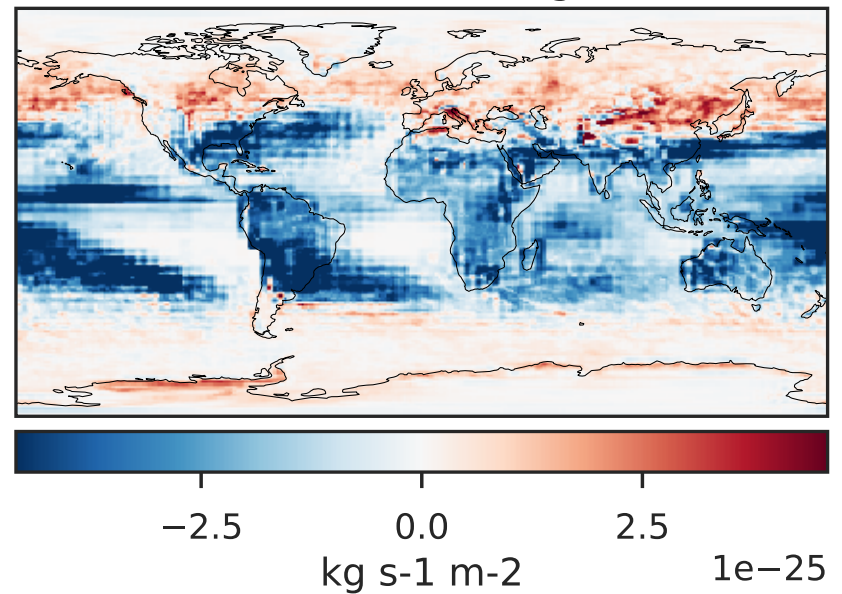
GCHP 14.2.2 using wind (Dev), Normalized by Area  
c180



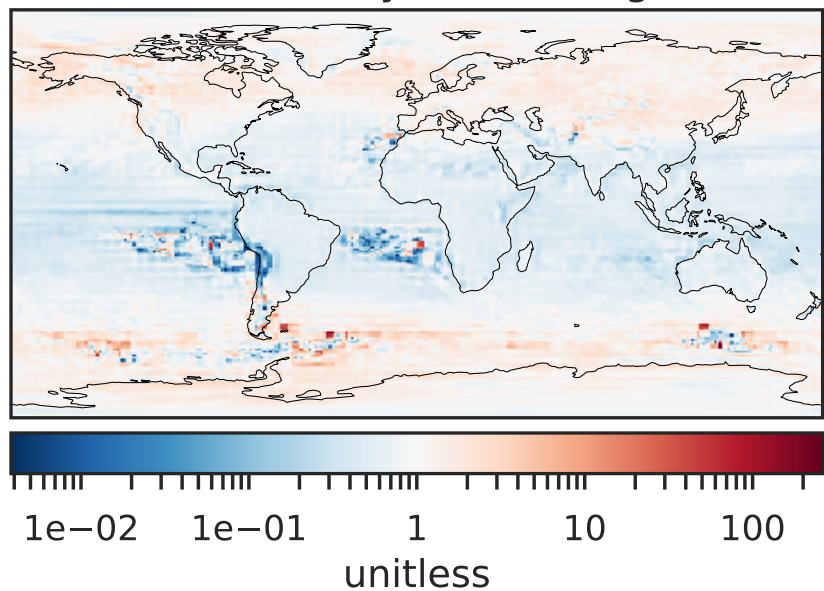
Difference (1x1.25)  
Dev - Ref, Dynamic Range



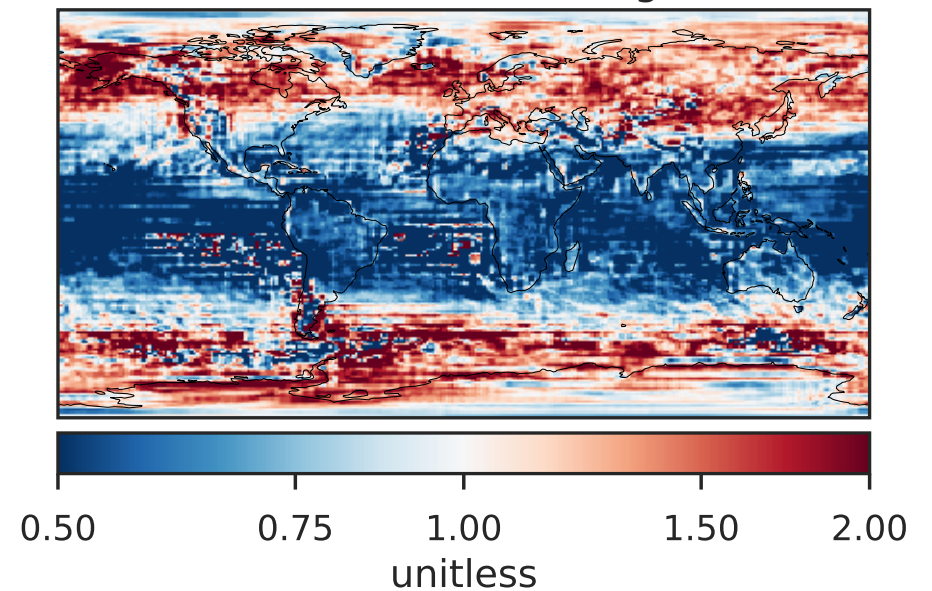
Difference (1x1.25)  
Dev - Ref, Restricted Range [5%,95%]



Ratio (1x1.25)  
Dev/Ref, Dynamic Range



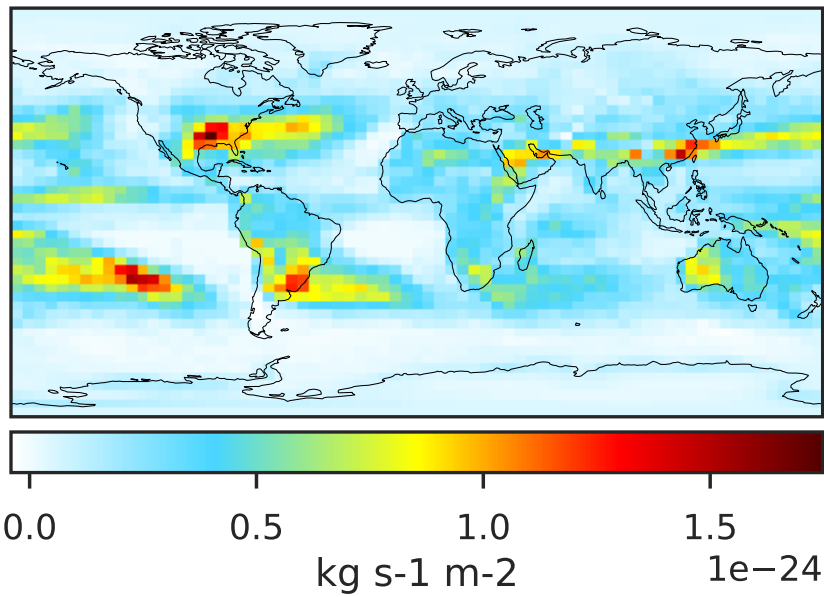
Ratio (1x1.25)  
Dev/Ref, Fixed Range



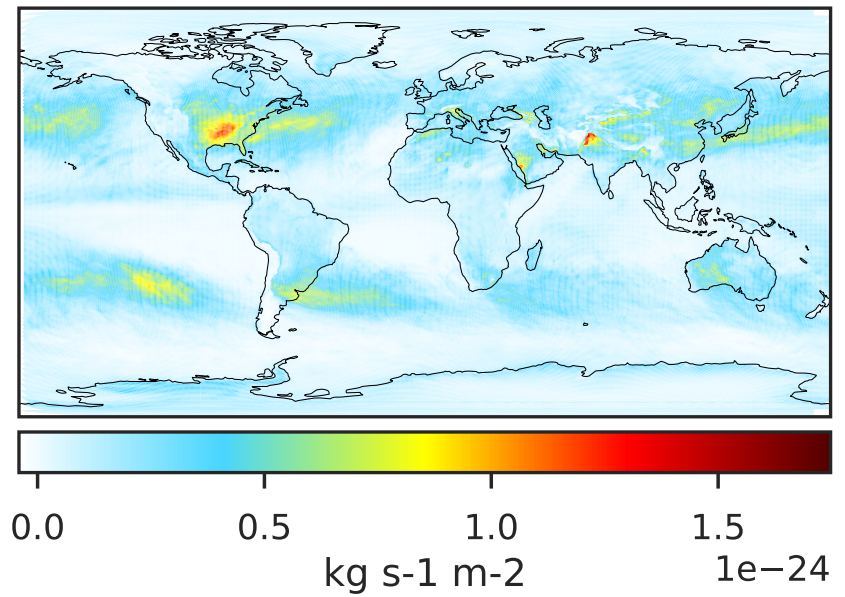


# WetLossLS\_Be10s (AnnualMean)

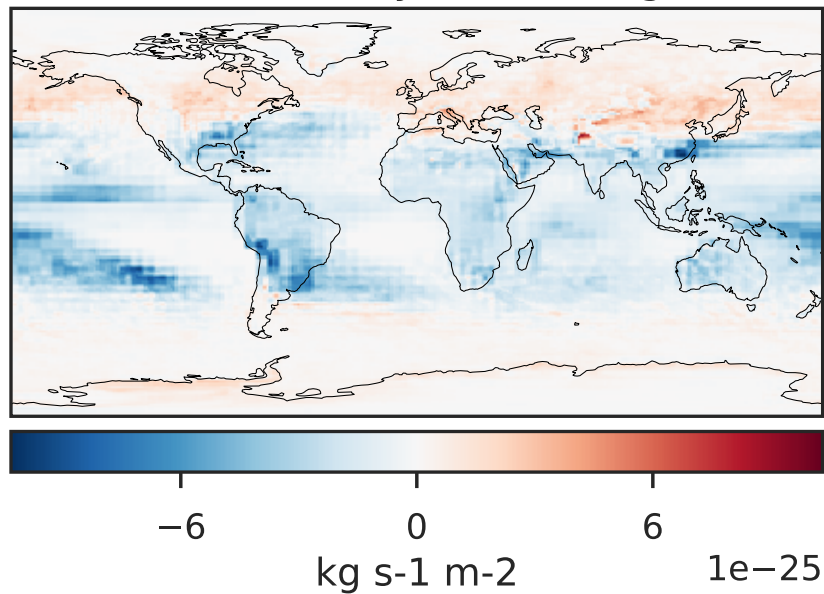
GCC 14.2.2 (Ref), Normalized by Area  
4.0x5.0



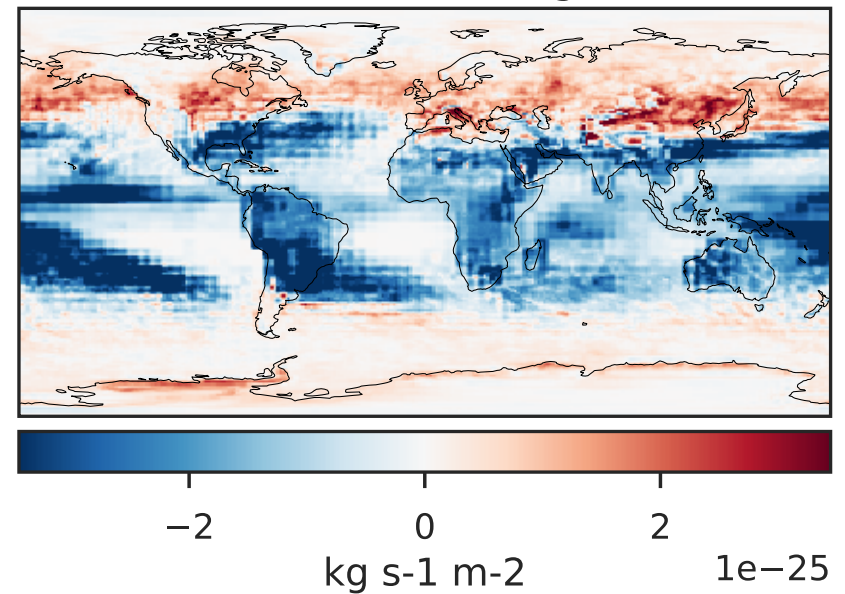
GCHP 14.2.2 using wind (Dev), Normalized by Area  
c180



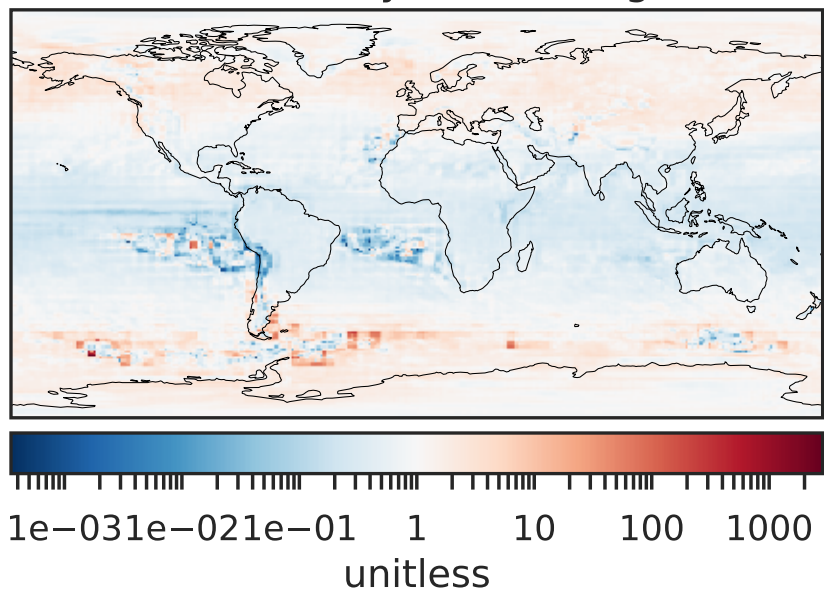
Difference (1x1.25)  
Dev - Ref, Dynamic Range



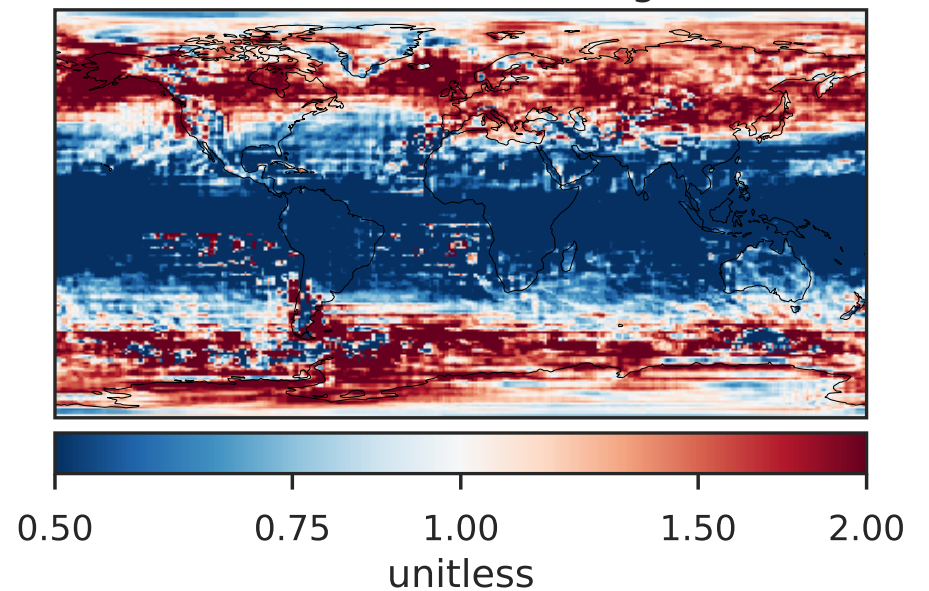
Difference (1x1.25)  
Dev - Ref, Restricted Range [5%,95%]



Ratio (1x1.25)  
Dev/Ref, Dynamic Range



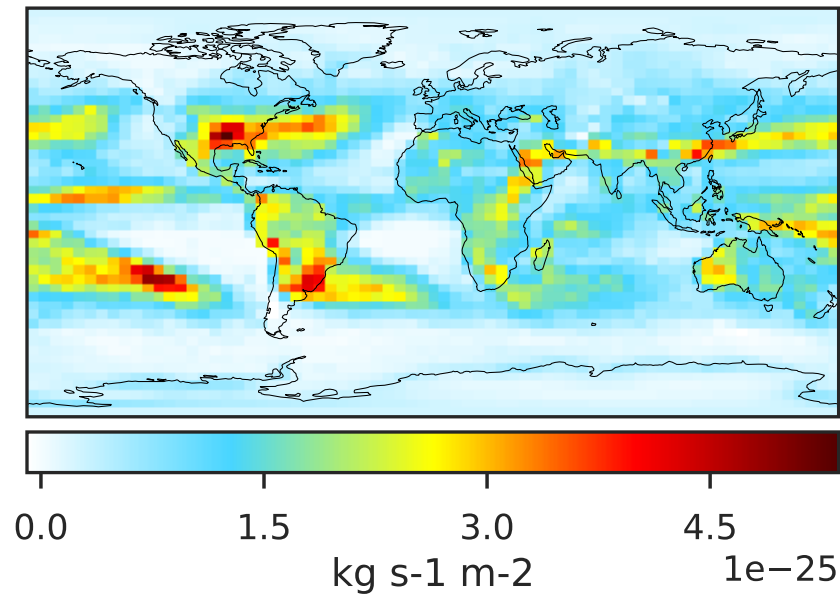
Ratio (1x1.25)  
Dev/Ref, Fixed Range



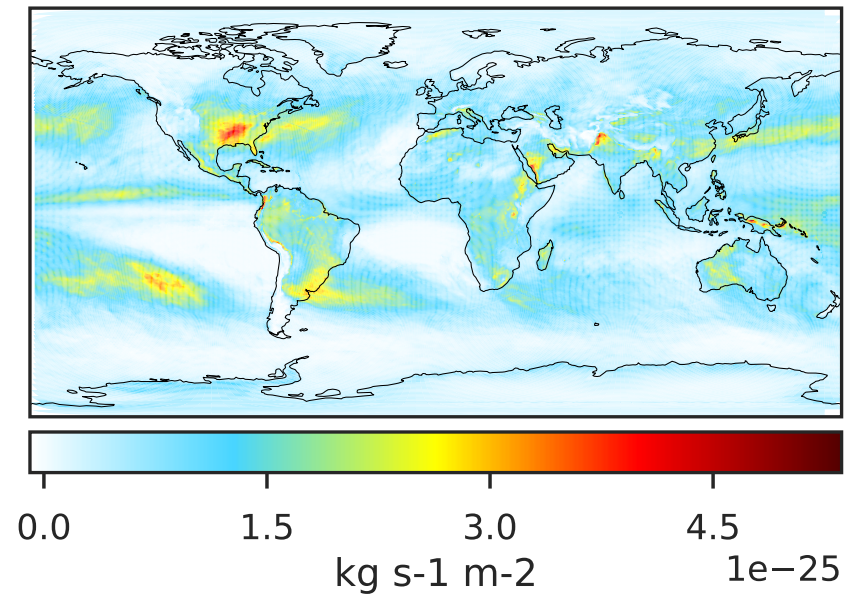


# WetLossLS\_Be7 (AnnualMean)

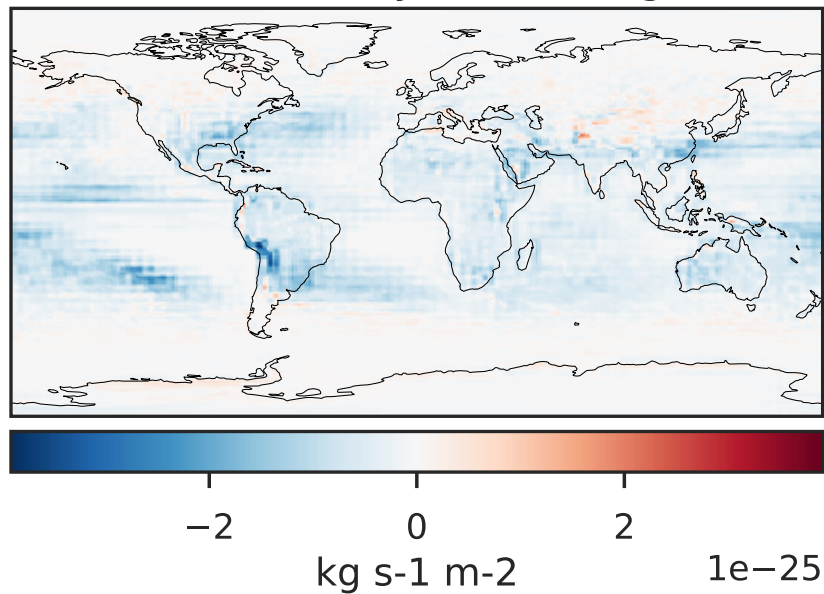
GCC 14.2.2 (Ref), Normalized by Area  
4.0x5.0



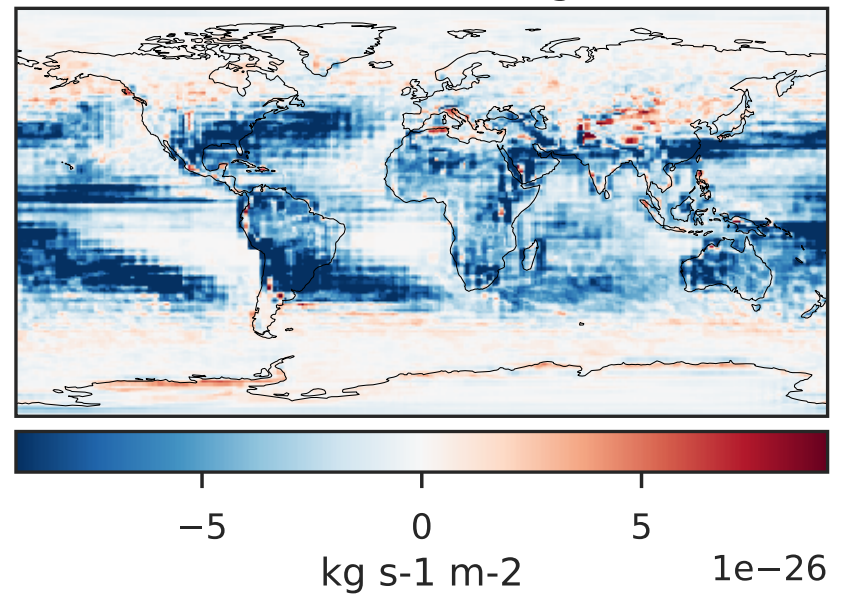
GCHP 14.2.2 using wind (Dev), Normalized by Area  
c180



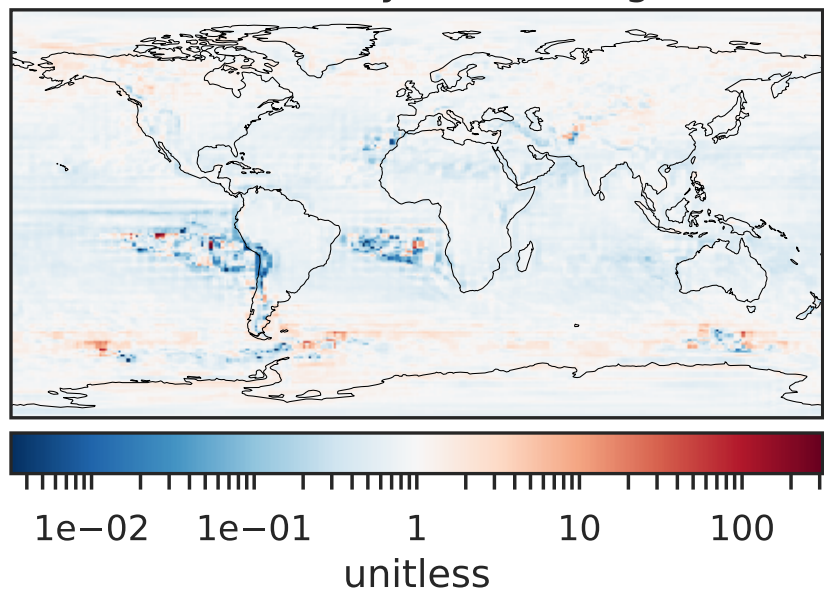
Difference (1x1.25)  
Dev - Ref, Dynamic Range



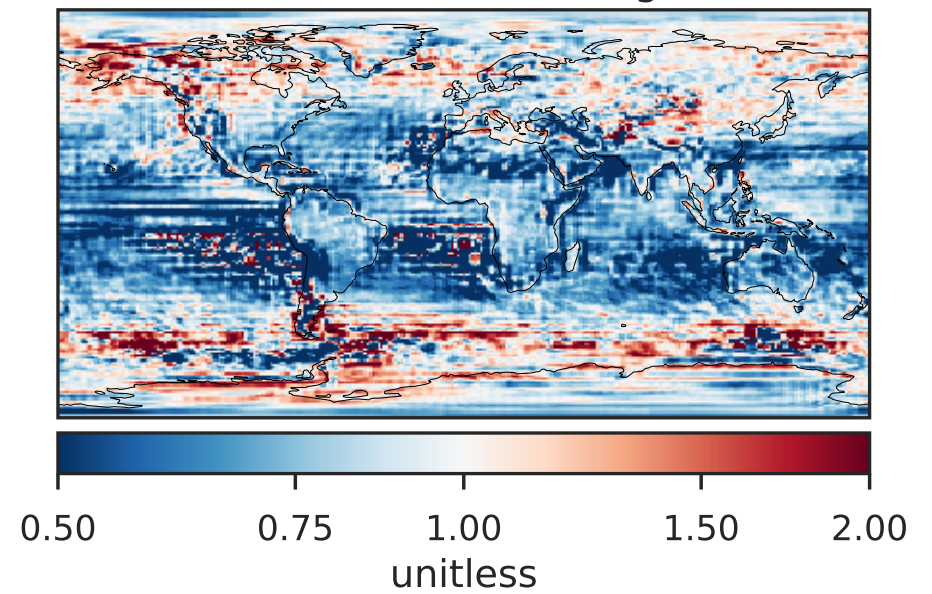
Difference (1x1.25)  
Dev - Ref, Restricted Range [5%,95%]



Ratio (1x1.25)  
Dev/Ref, Dynamic Range



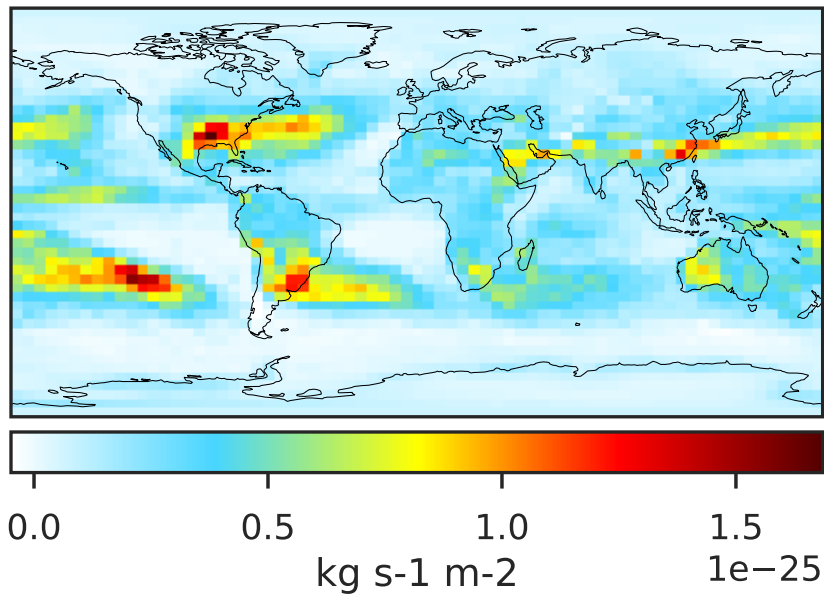
Ratio (1x1.25)  
Dev/Ref, Fixed Range



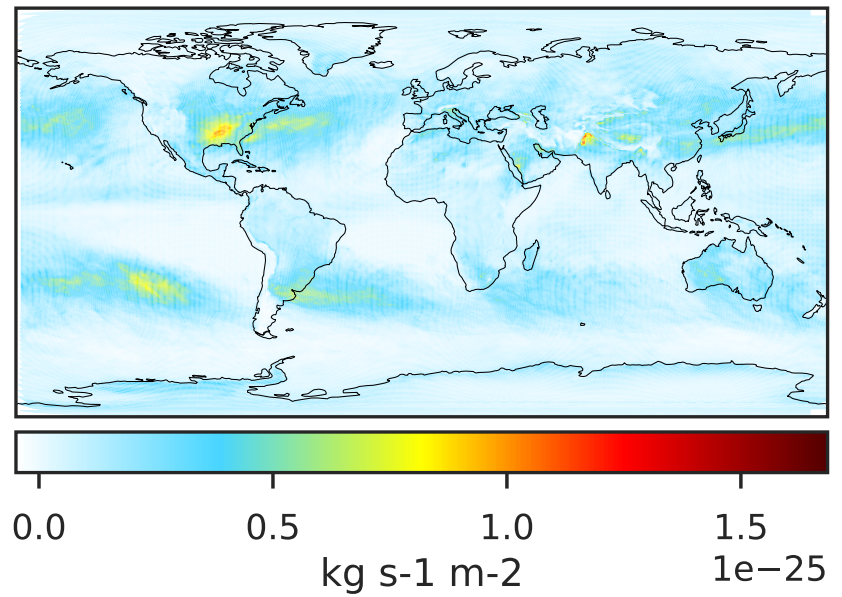


# WetLossLS\_Be7s (AnnualMean)

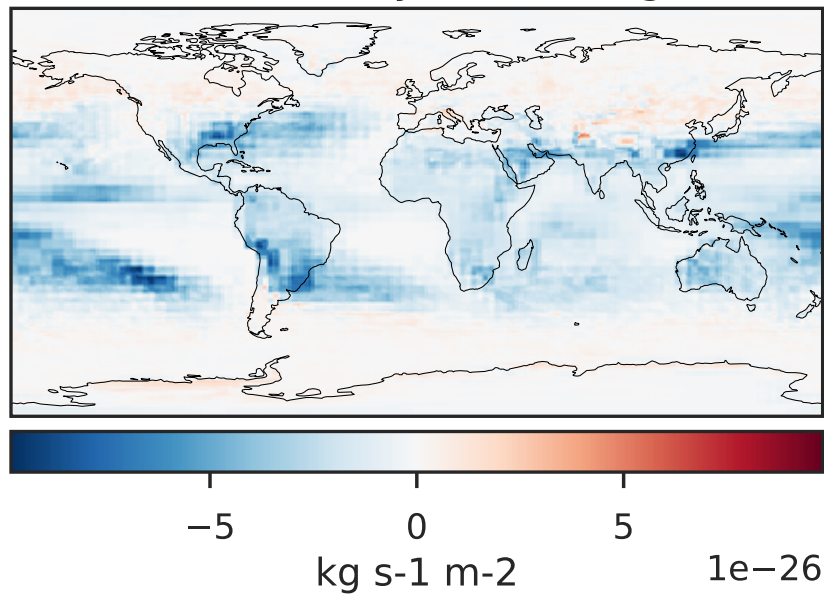
GCC 14.2.2 (Ref), Normalized by Area  
4.0x5.0



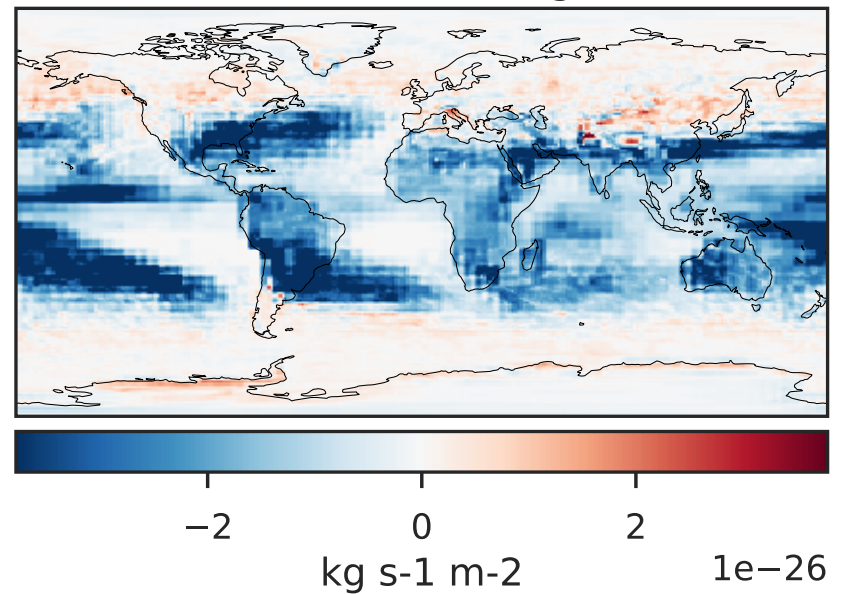
GCHP 14.2.2 using wind (Dev), Normalized by Area  
c180



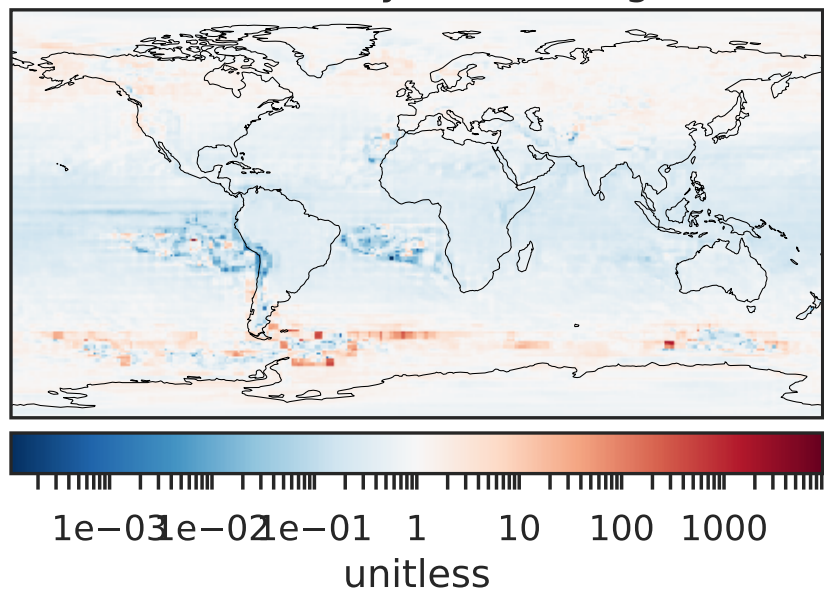
Difference (1x1.25)  
Dev - Ref, Dynamic Range



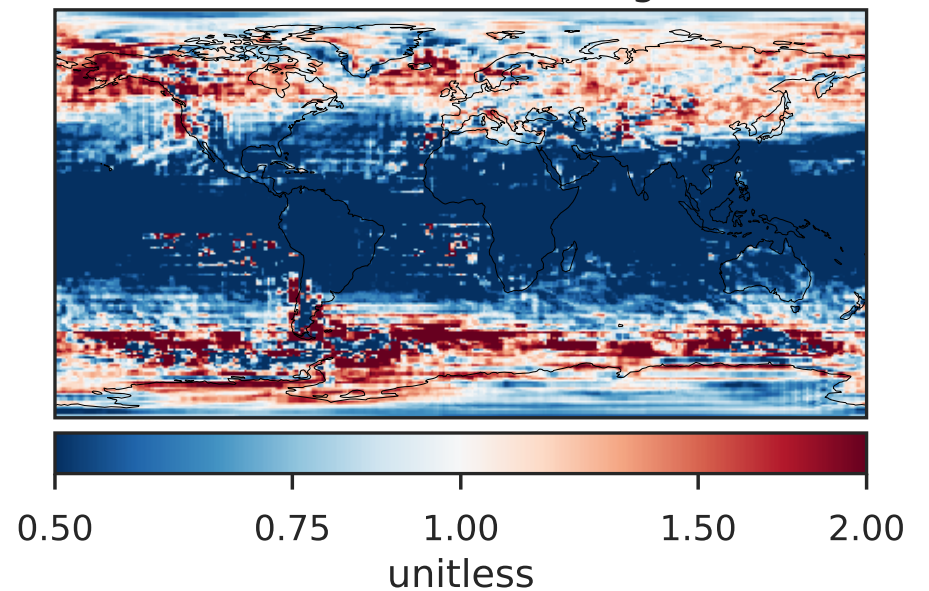
Difference (1x1.25)  
Dev - Ref, Restricted Range [5%,95%]



Ratio (1x1.25)  
Dev/Ref, Dynamic Range



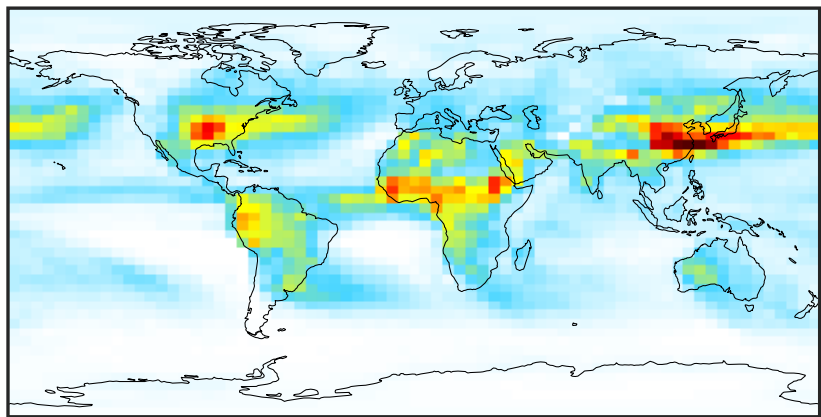
Ratio (1x1.25)  
Dev/Ref, Fixed Range





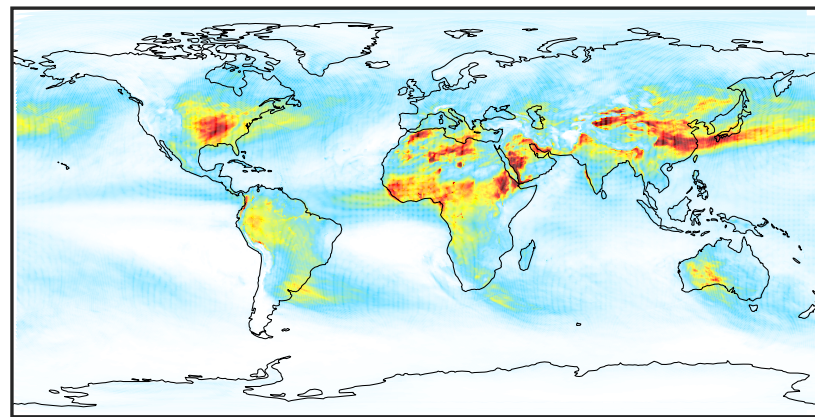
# WetLossLS\_Pb210 (AnnualMean)

GCC 14.2.2 (Ref), Normalized by Area  
4.0x5.0



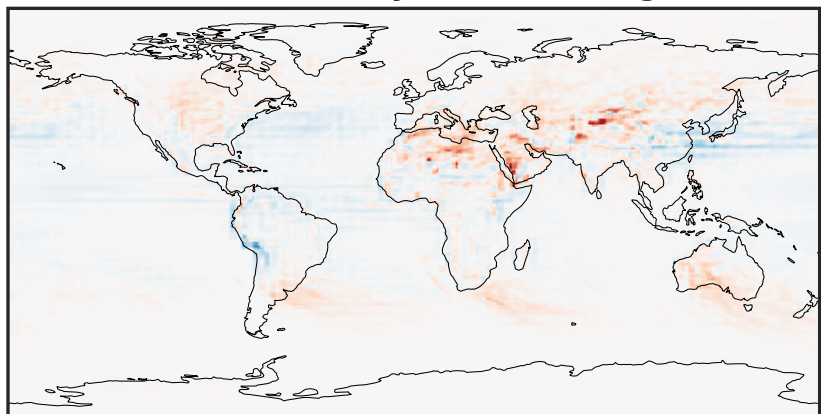
0.0 2.5 5.0 7.5  $10^{-23}$   
kg s<sup>-1</sup> m<sup>-2</sup>

GCHP 14.2.2 using wind (Dev), Normalized by Area  
c180



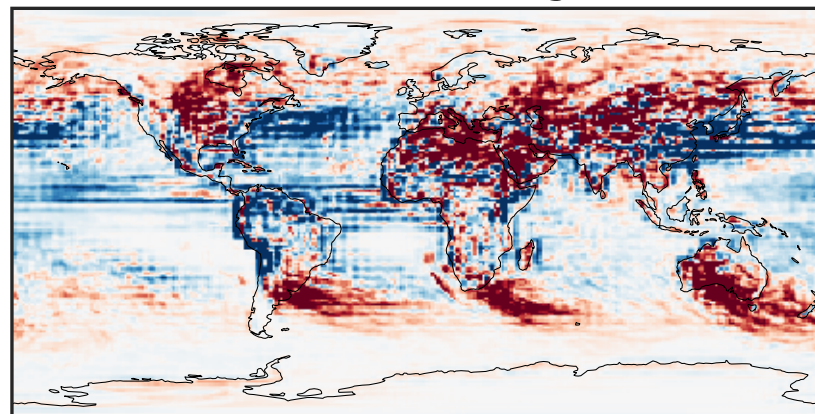
0.0 2.5 5.0 7.5  $10^{-23}$   
kg s<sup>-1</sup> m<sup>-2</sup>

Difference (1x1.25)  
Dev - Ref, Dynamic Range



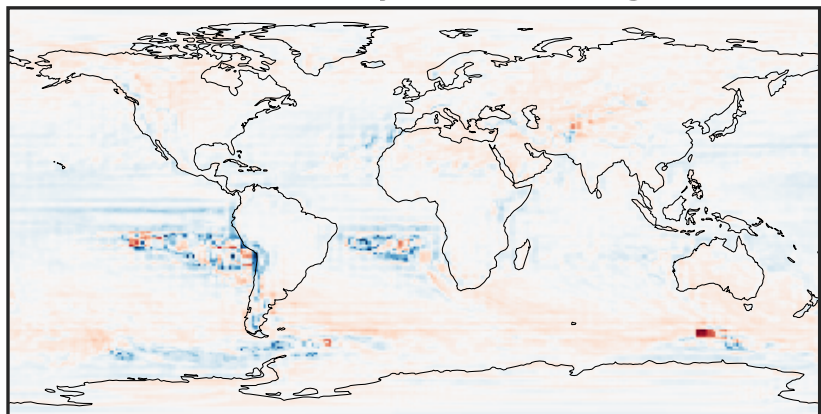
-5 0 5  $10^{-23}$   
kg s<sup>-1</sup> m<sup>-2</sup>

Difference (1x1.25)  
Dev - Ref, Restricted Range [5%,95%]



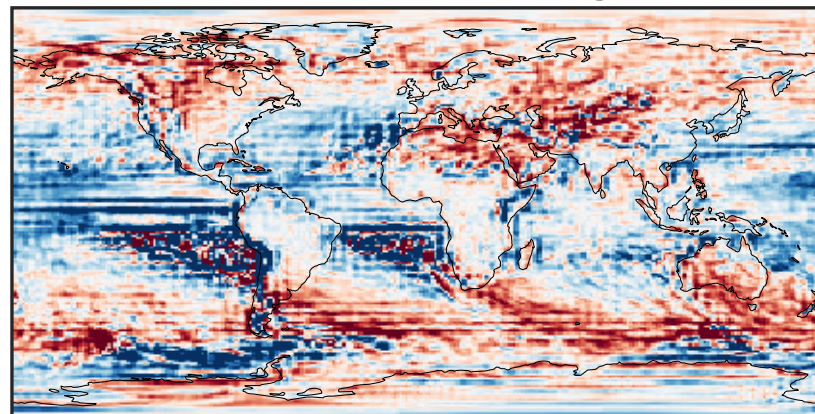
-4 0 4  $10^{-24}$   
kg s<sup>-1</sup> m<sup>-2</sup>

Ratio (1x1.25)  
Dev/Ref, Dynamic Range



1e-02 1e-01 1 10 100  
unitless

Ratio (1x1.25)  
Dev/Ref, Fixed Range

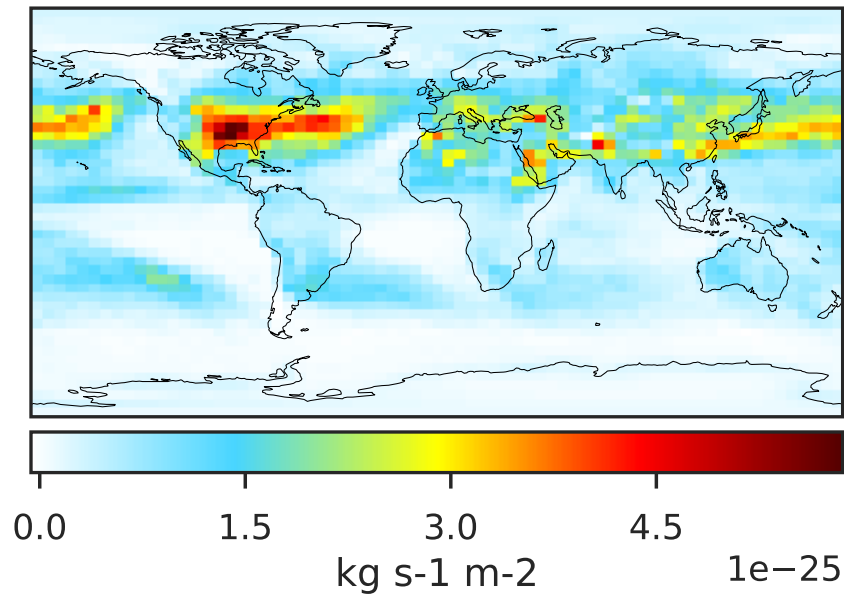


0.50 0.75 1.00 1.50 2.00  
unitless

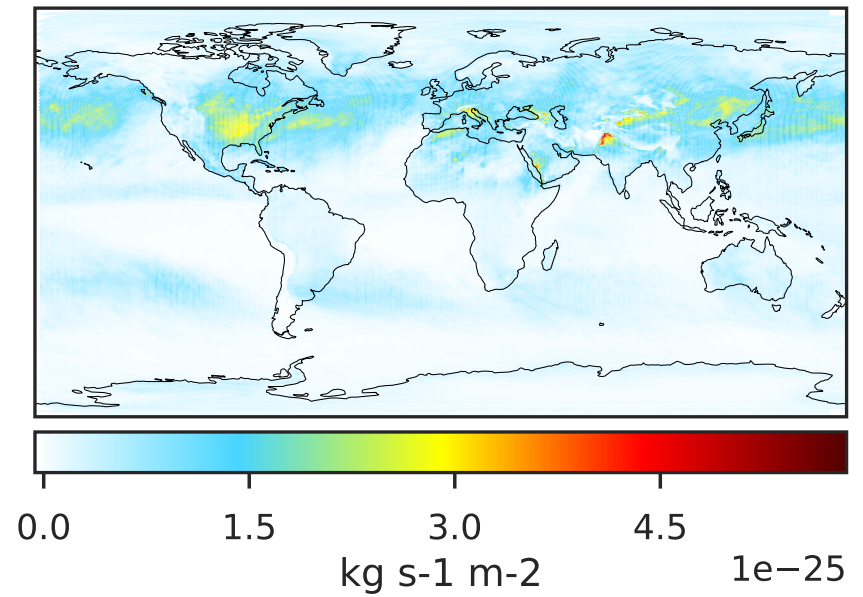


# WetLossLS\_Pb210s (AnnualMean)

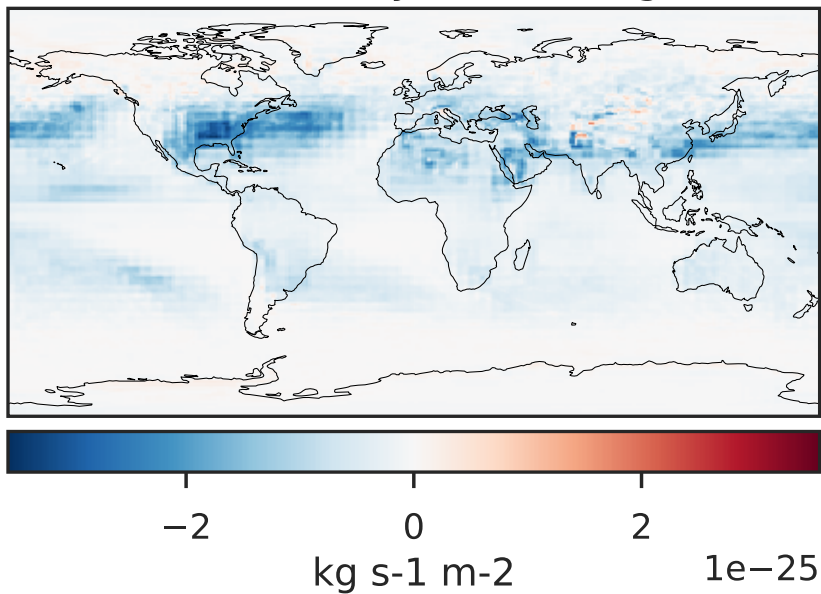
GCC 14.2.2 (Ref), Normalized by Area  
4.0x5.0



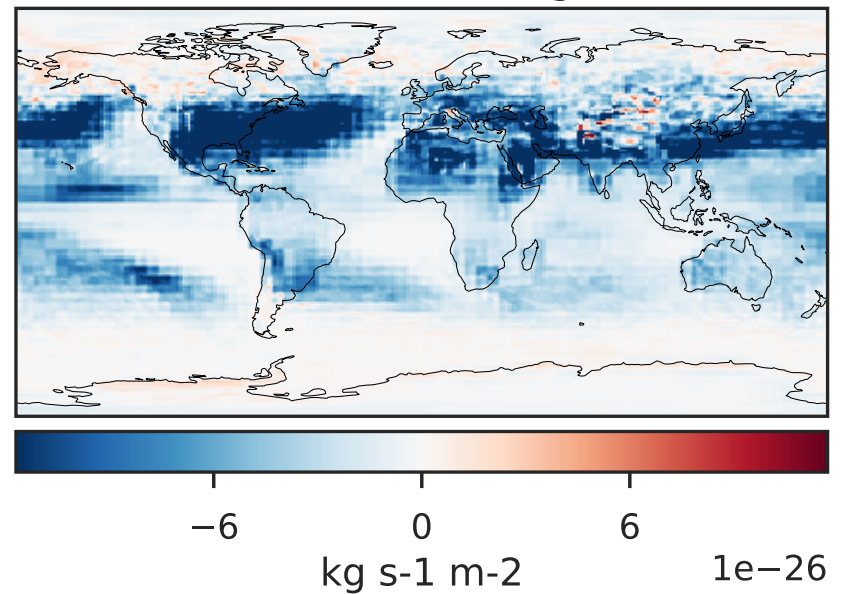
GCHP 14.2.2 using wind (Dev), Normalized by Area  
c180



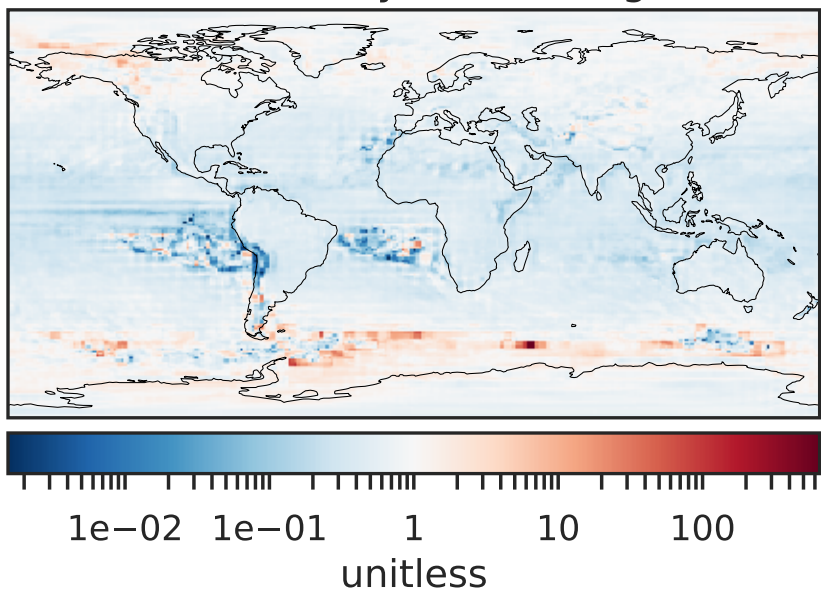
Difference (1x1.25)  
Dev - Ref, Dynamic Range



Difference (1x1.25)  
Dev - Ref, Restricted Range [5%,95%]



Ratio (1x1.25)  
Dev/Ref, Dynamic Range



Ratio (1x1.25)  
Dev/Ref, Fixed Range

