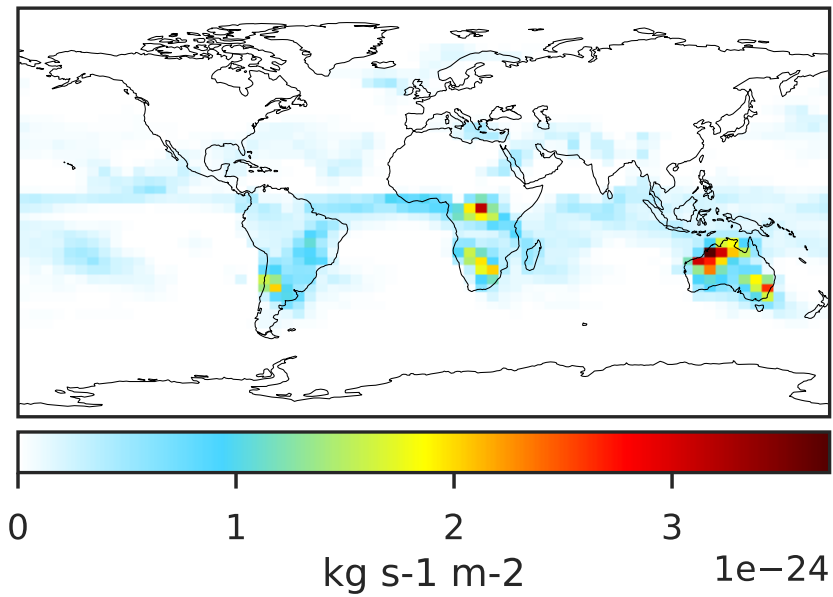
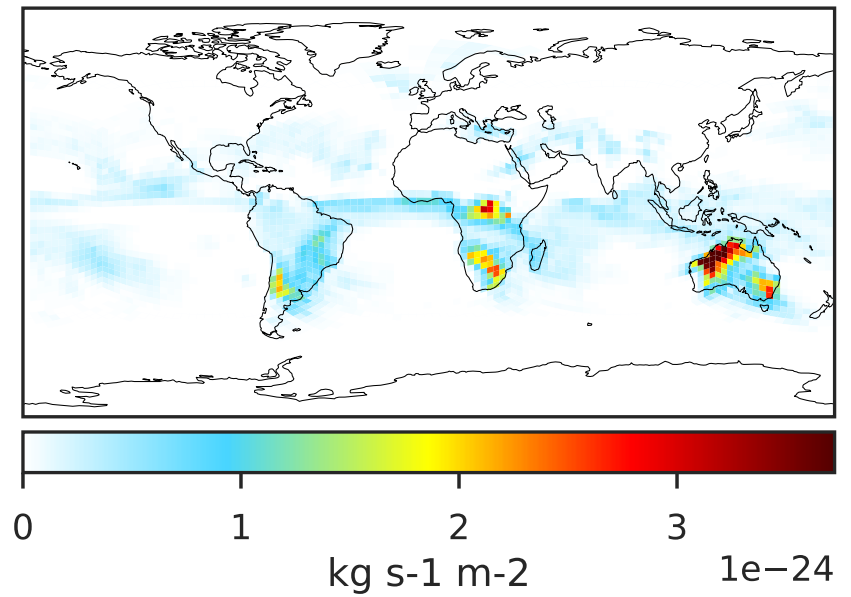


# WetLossConv\_Be10 (Jan2019)

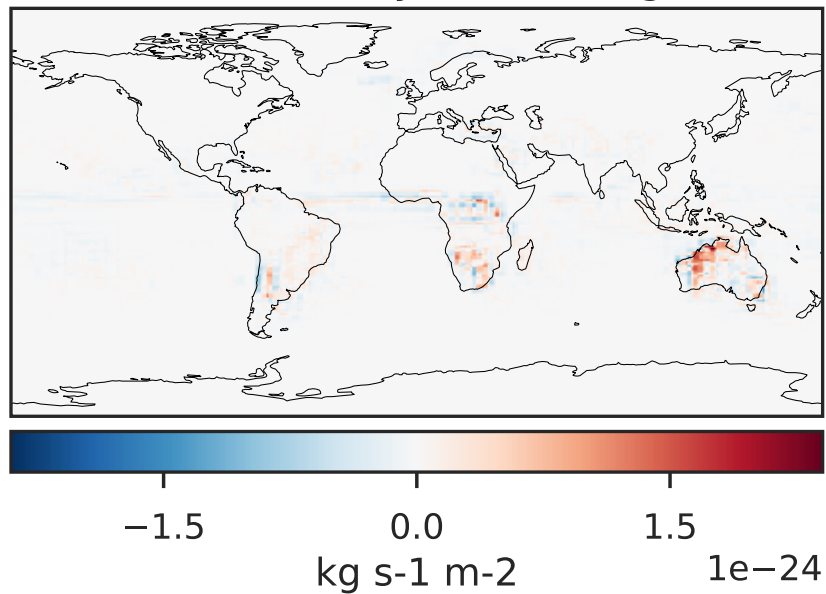
GCC 14.2.2 (Ref), Normalized by Area  
4.0x5.0



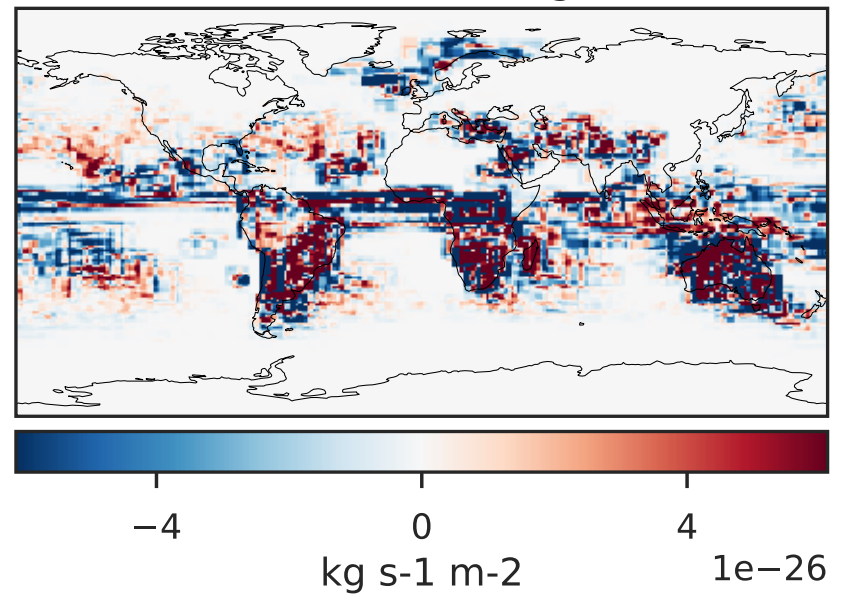
GCHP 14.2.2 using wind (Dev), Normalized by Area  
c30



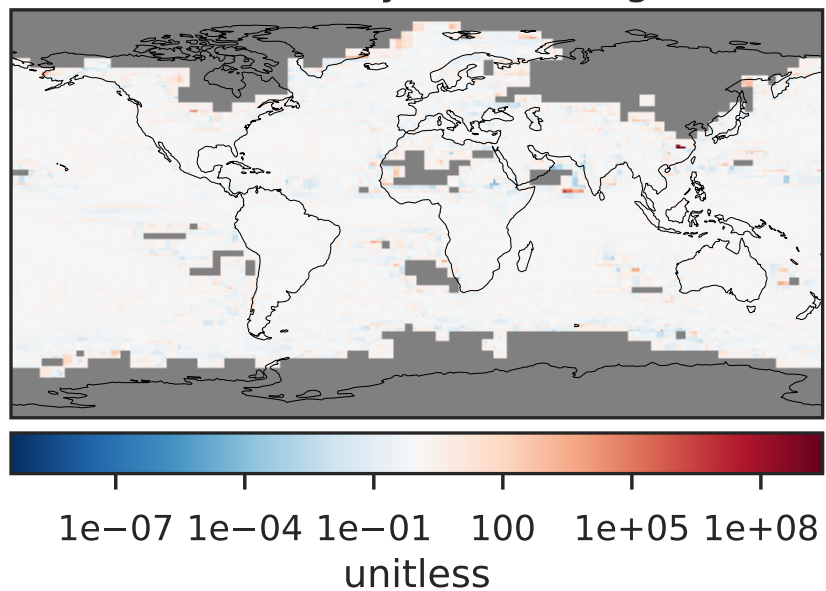
Difference (1x1.25)  
Dev - Ref, Dynamic Range



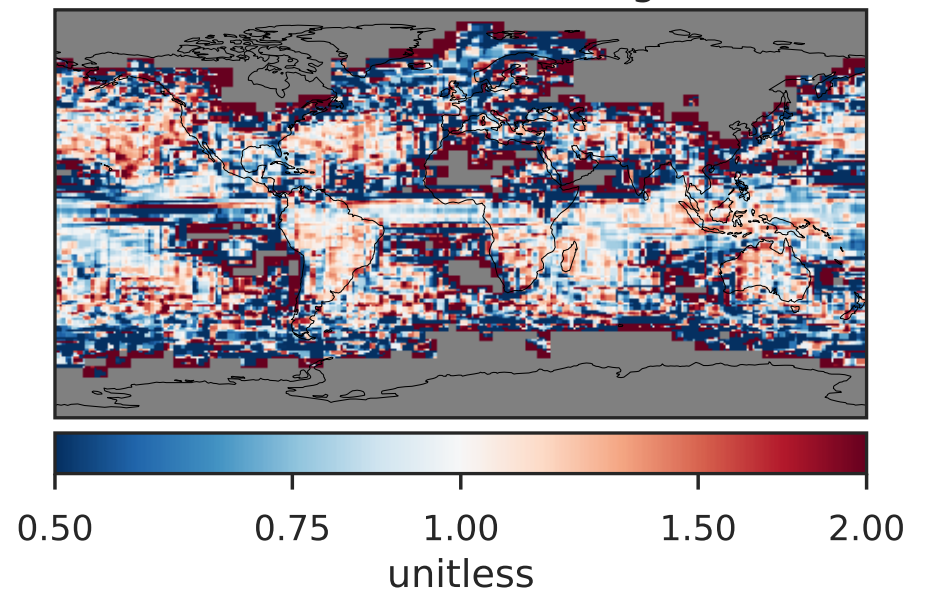
Difference (1x1.25)  
Dev - Ref, Restricted Range [5%,95%]



Ratio (1x1.25)  
Dev/Ref, Dynamic Range

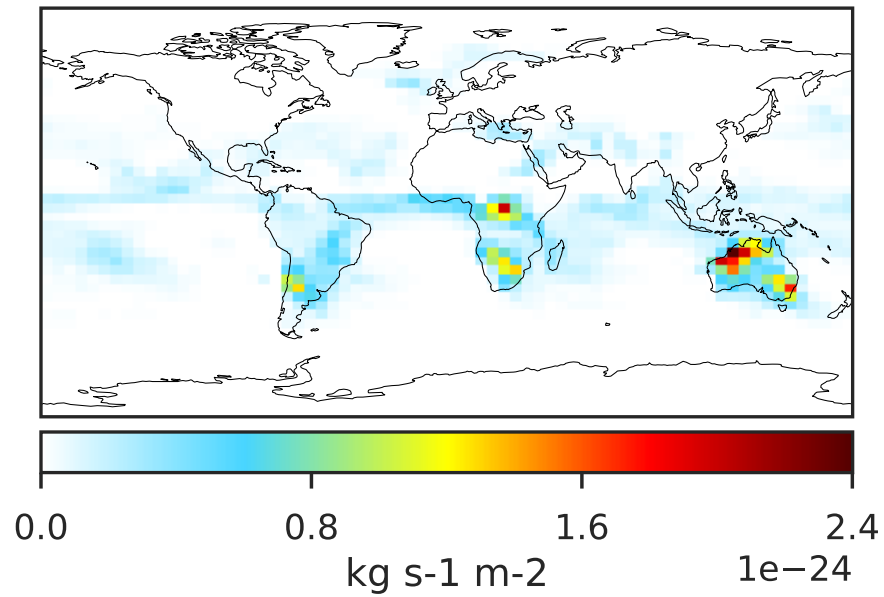


Ratio (1x1.25)  
Dev/Ref, Fixed Range

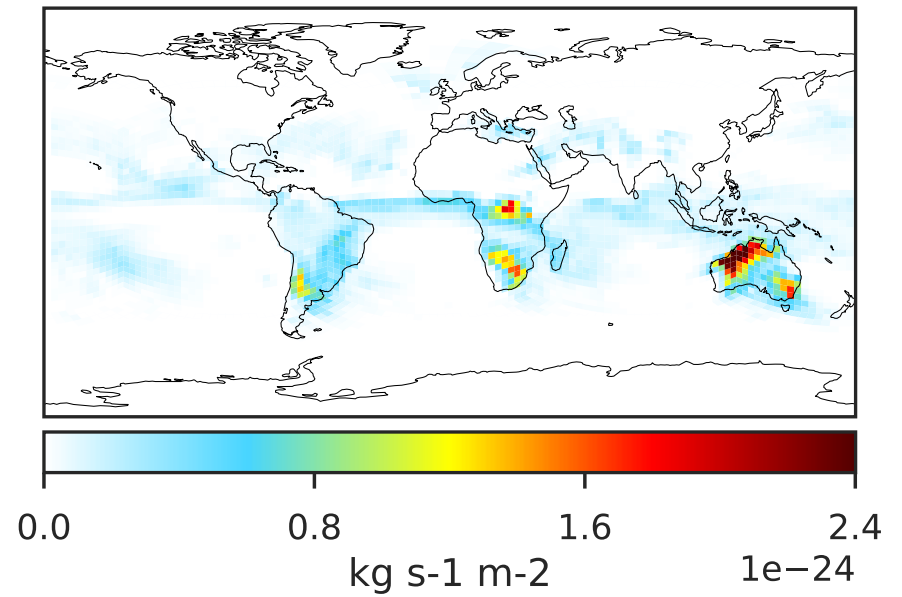


# WetLossConv\_Be10s (Jan2019)

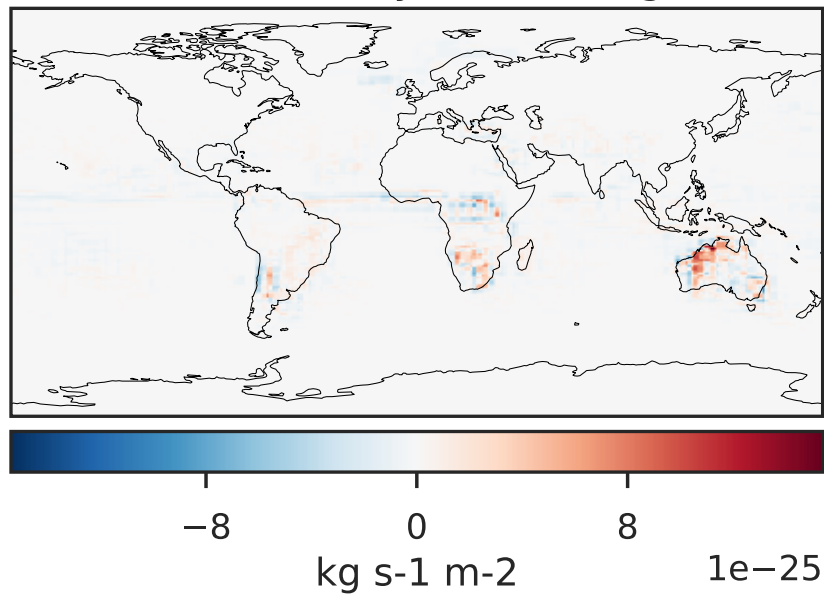
GCC 14.2.2 (Ref), Normalized by Area  
4.0x5.0



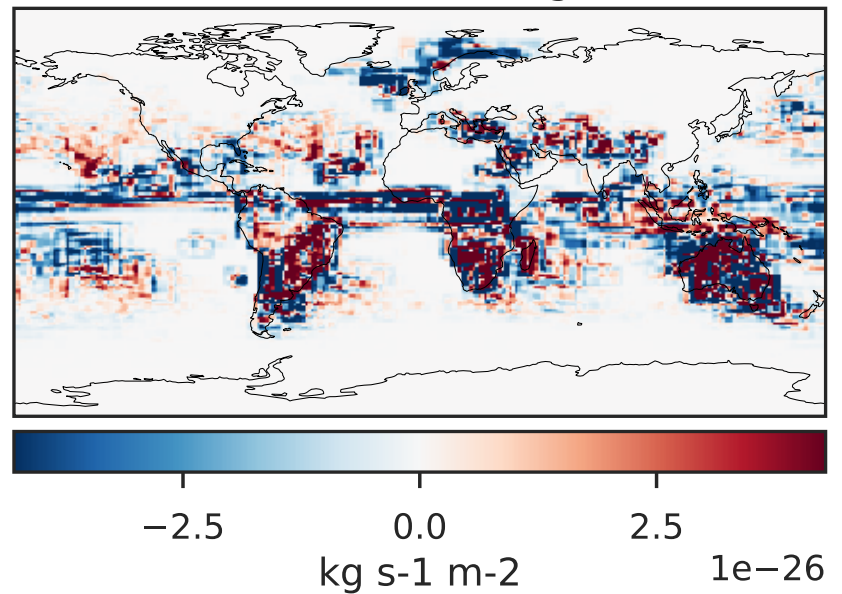
GCHP 14.2.2 using wind (Dev), Normalized by Area  
c30



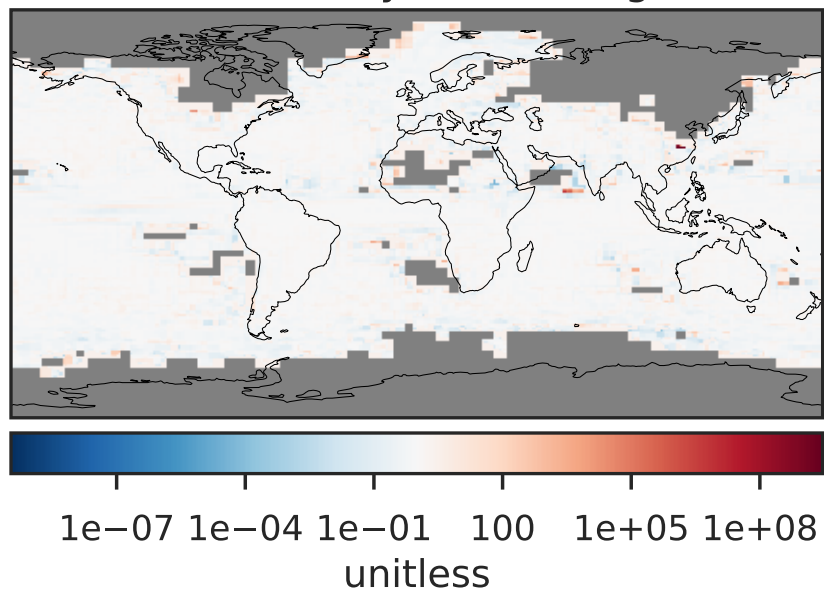
Difference (1x1.25)  
Dev - Ref, Dynamic Range



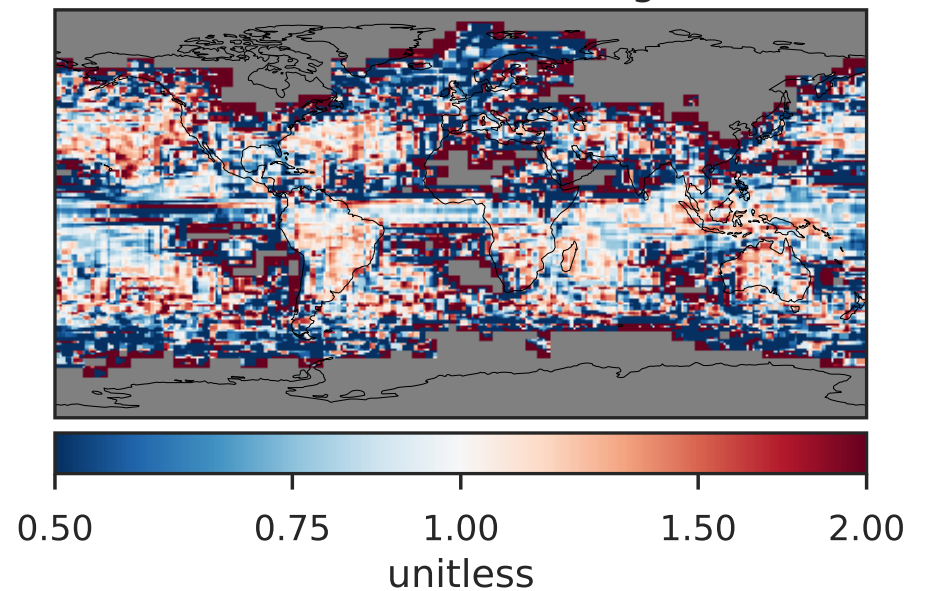
Difference (1x1.25)  
Dev - Ref, Restricted Range [5%,95%]



Ratio (1x1.25)  
Dev/Ref, Dynamic Range

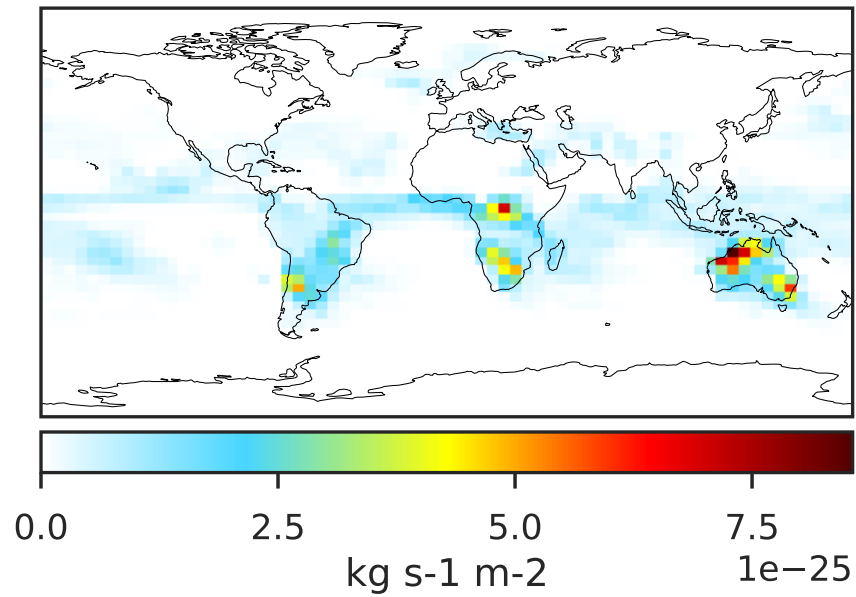


Ratio (1x1.25)  
Dev/Ref, Fixed Range

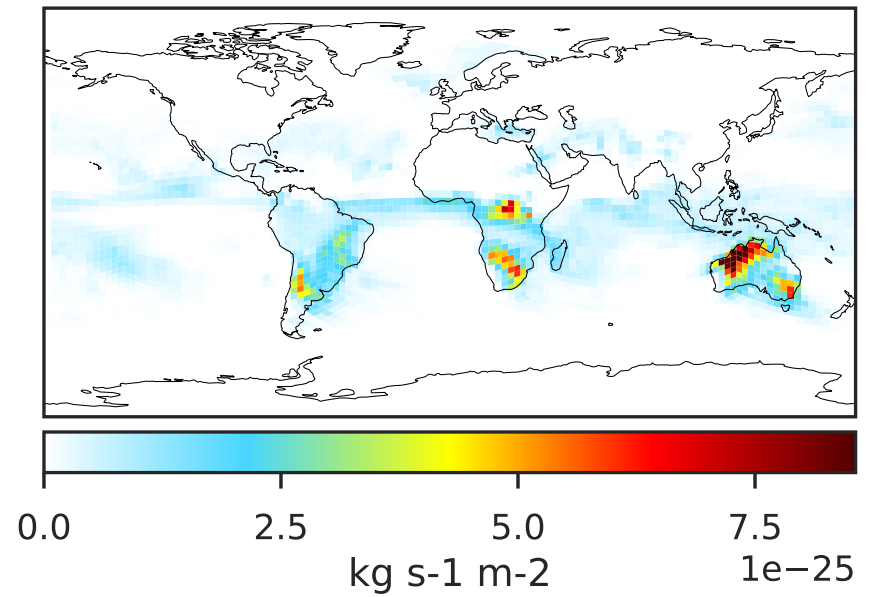


# WetLossConv\_Be7 (Jan2019)

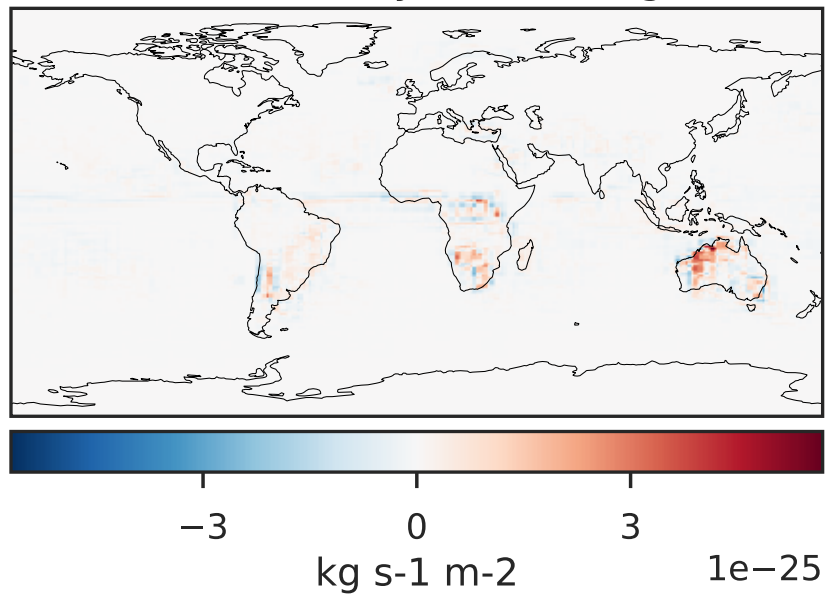
GCC 14.2.2 (Ref), Normalized by Area  
4.0x5.0



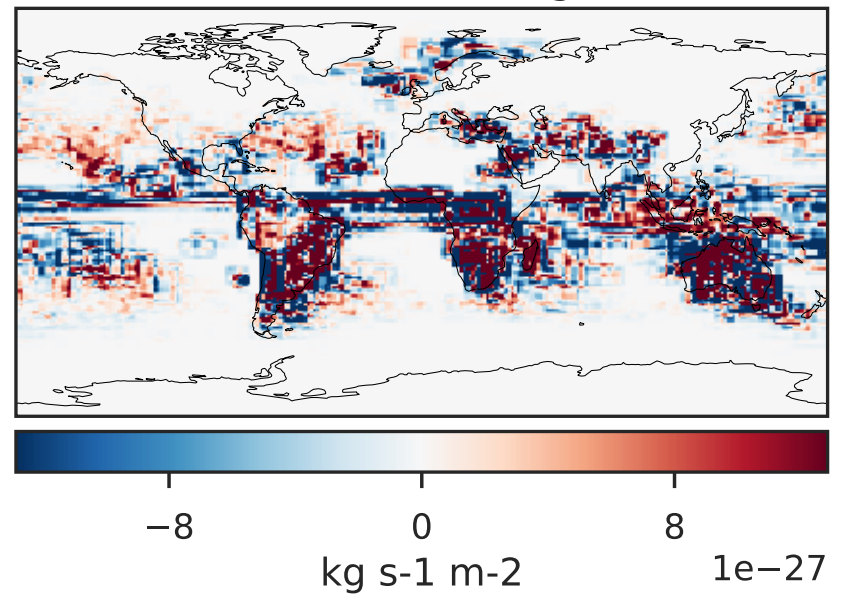
GCHP 14.2.2 using wind (Dev), Normalized by Area  
c30



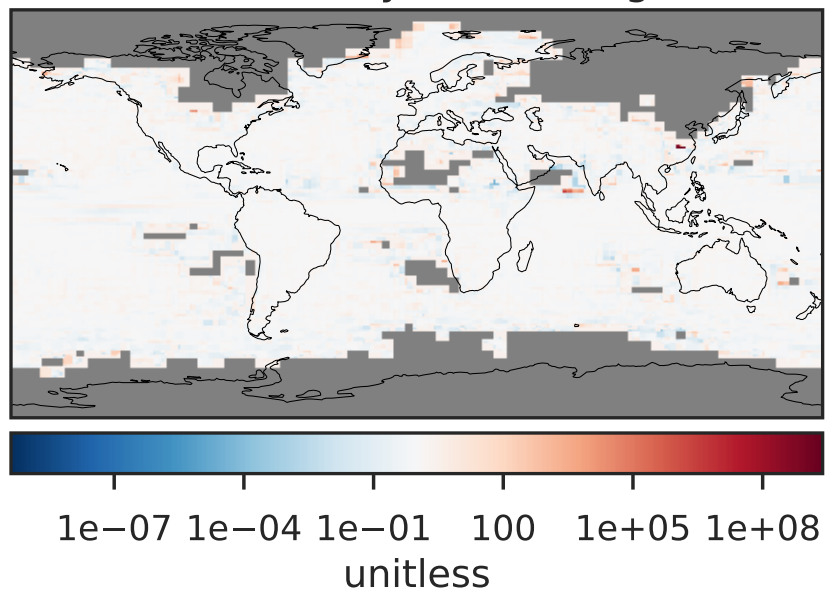
Difference (1x1.25)  
Dev - Ref, Dynamic Range



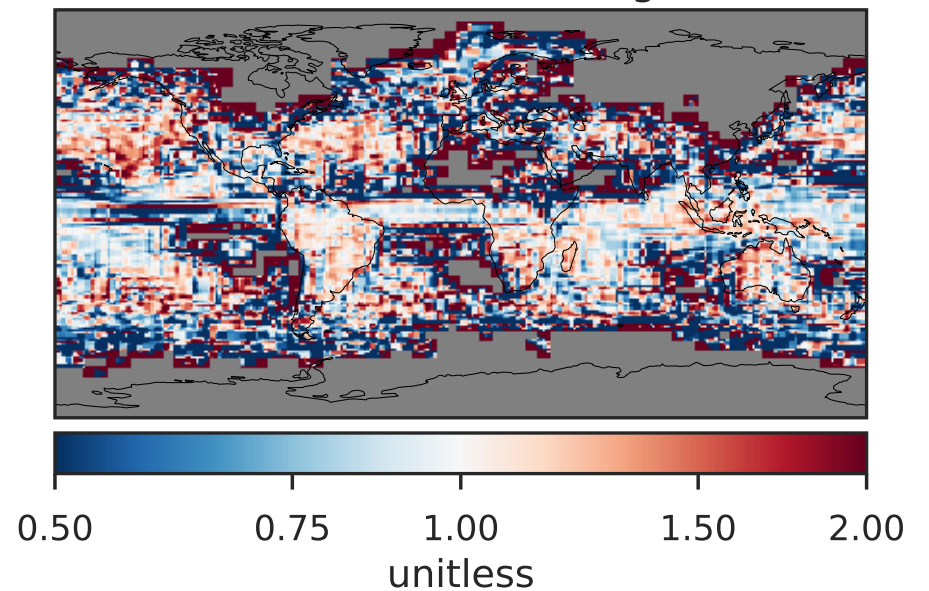
Difference (1x1.25)  
Dev - Ref, Restricted Range [5%,95%]



Ratio (1x1.25)  
Dev/Ref, Dynamic Range

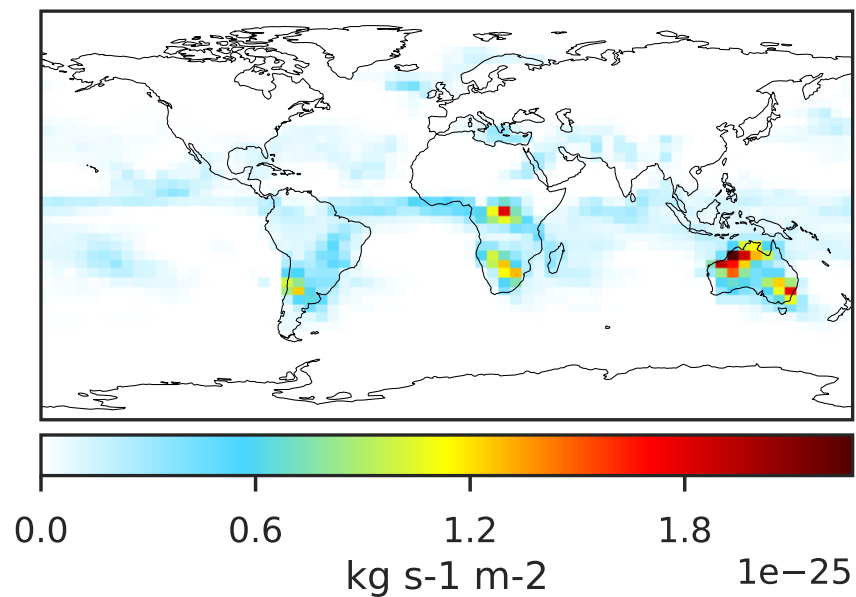


Ratio (1x1.25)  
Dev/Ref, Fixed Range

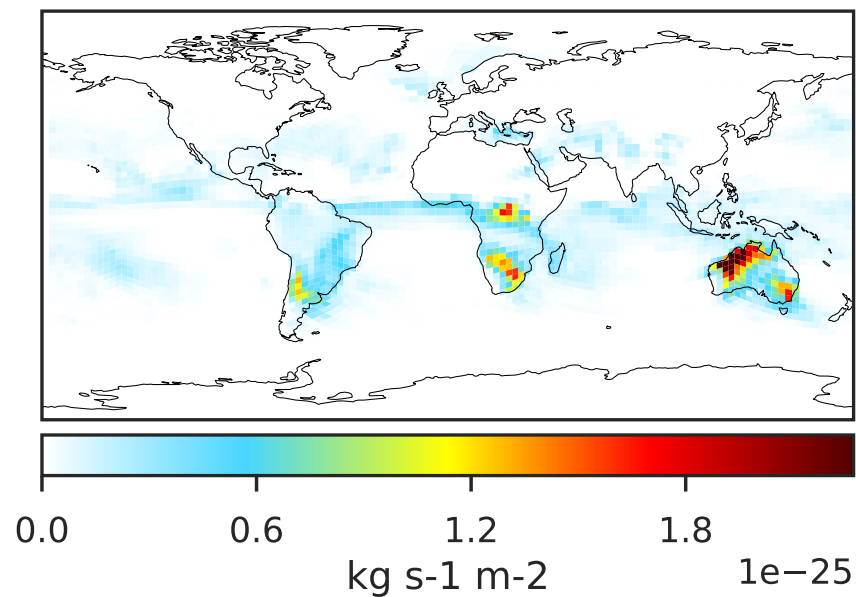


# WetLossConv\_Be7s (Jan2019)

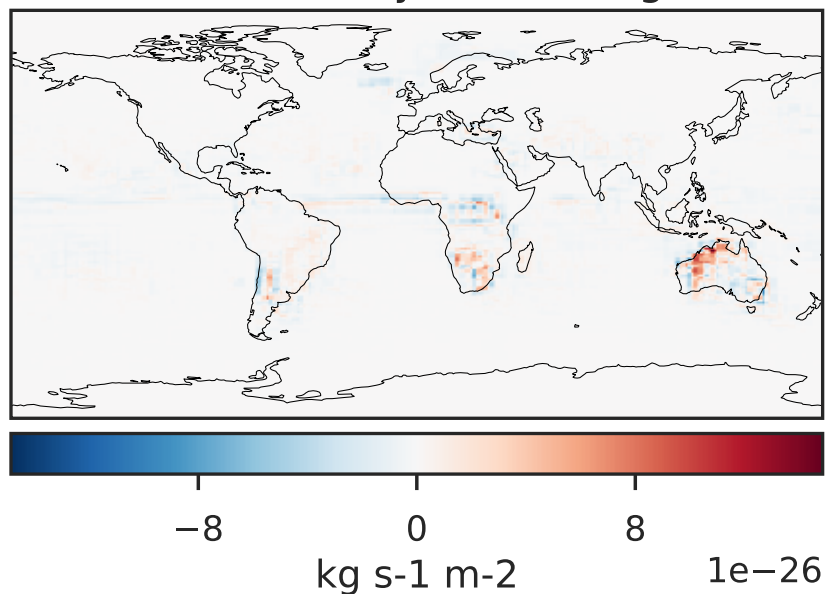
GCC 14.2.2 (Ref), Normalized by Area  
4.0x5.0



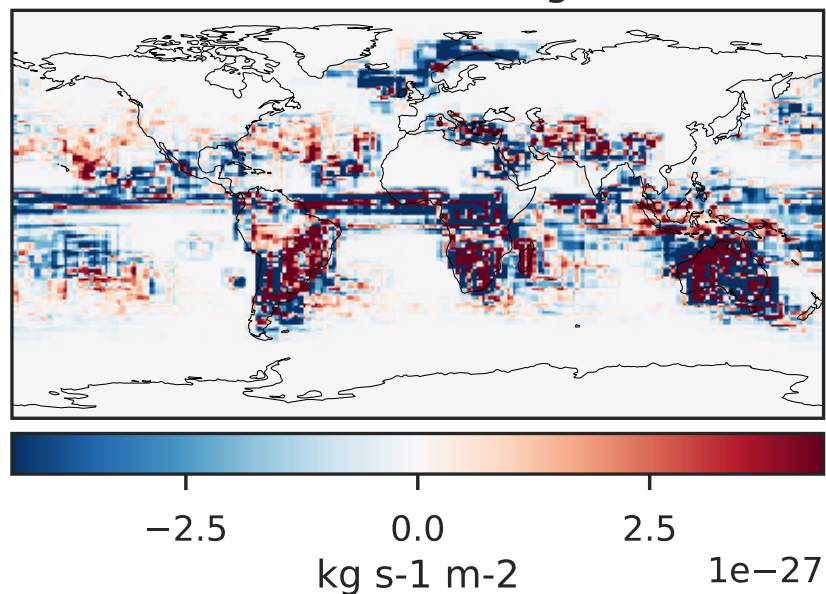
GCHP 14.2.2 using wind (Dev), Normalized by Area  
c30



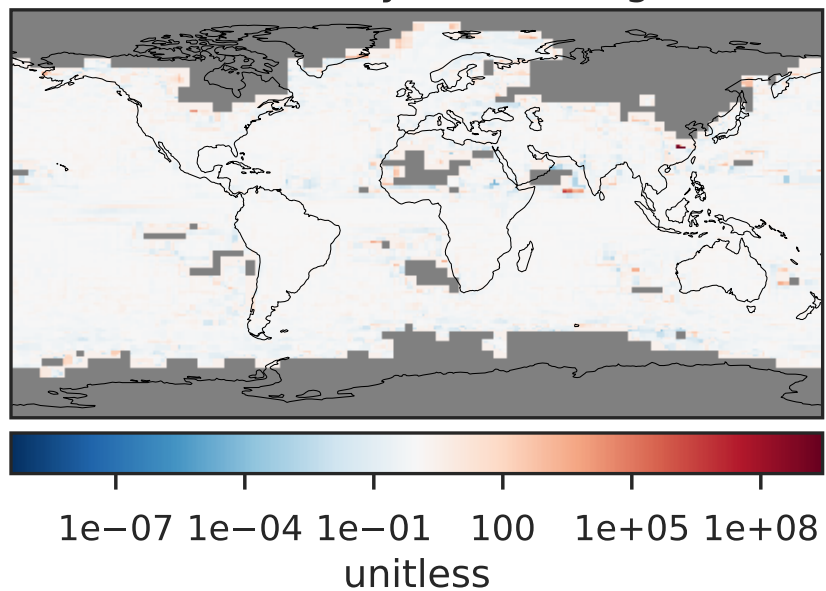
Difference (1x1.25)  
Dev - Ref, Dynamic Range



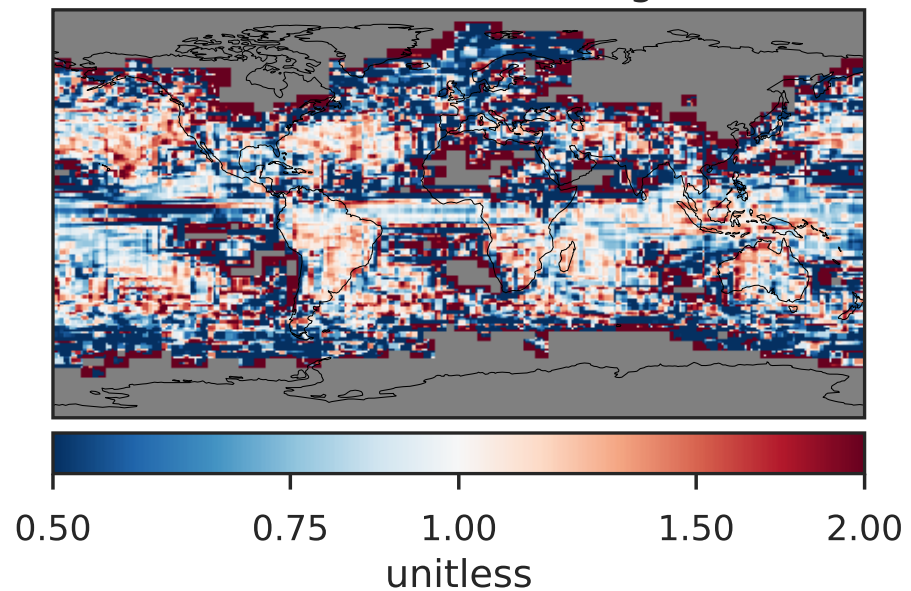
Difference (1x1.25)  
Dev - Ref, Restricted Range [5%,95%]



Ratio (1x1.25)  
Dev/Ref, Dynamic Range

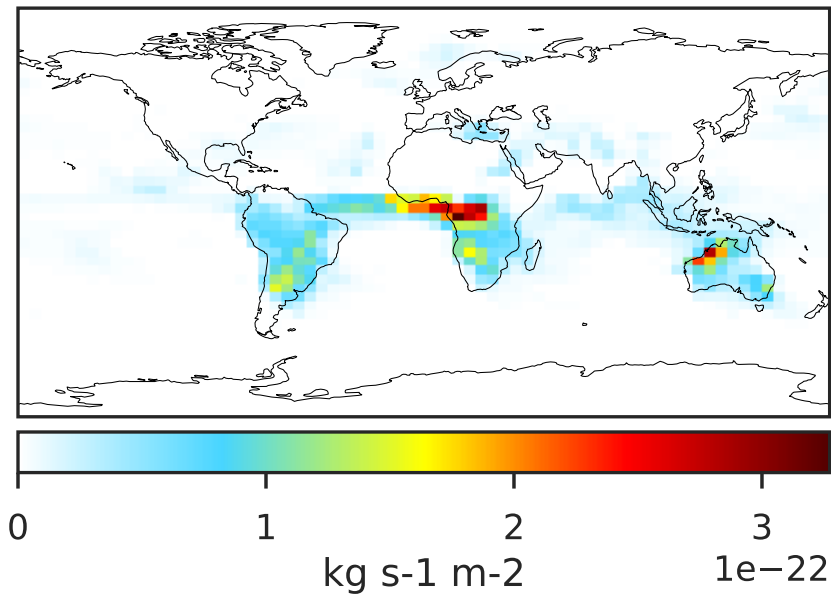


Ratio (1x1.25)  
Dev/Ref, Fixed Range

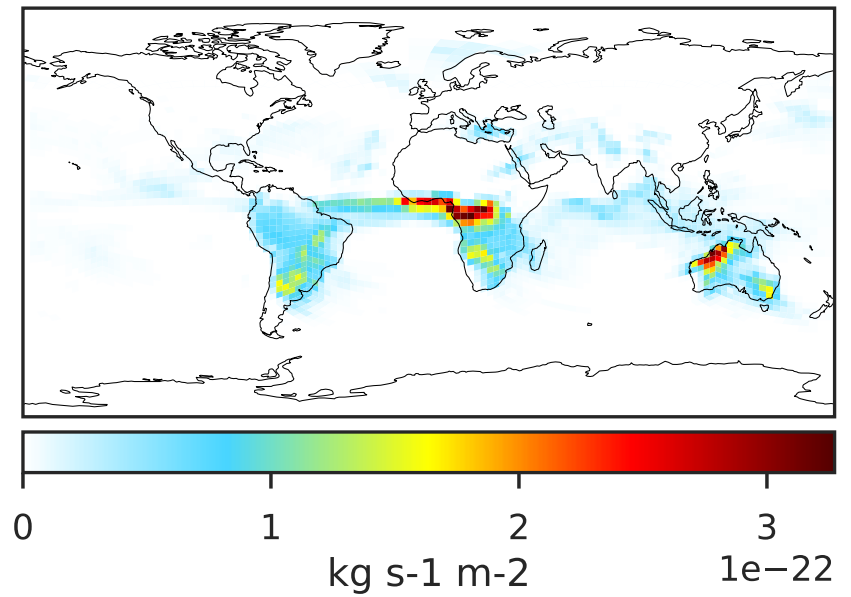


# WetLossConv\_Pb210 (Jan2019)

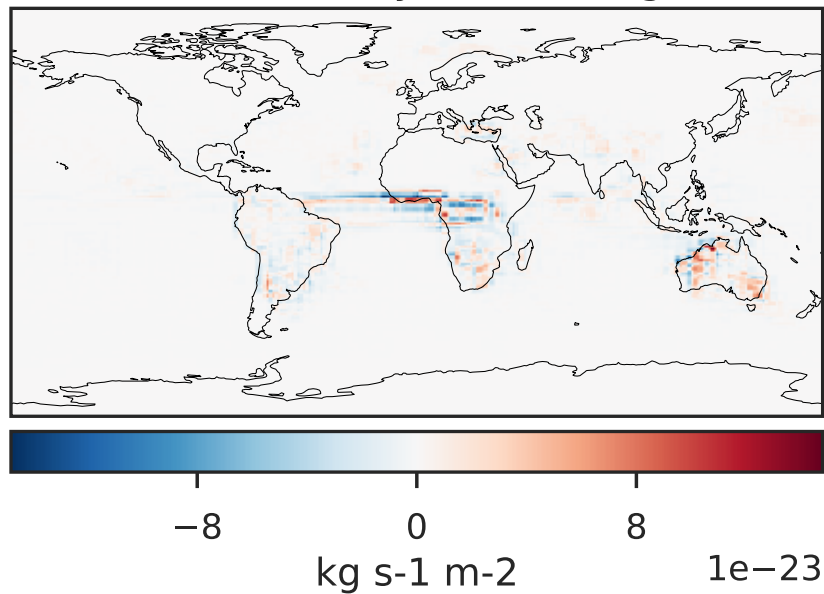
GCC 14.2.2 (Ref), Normalized by Area  
4.0x5.0



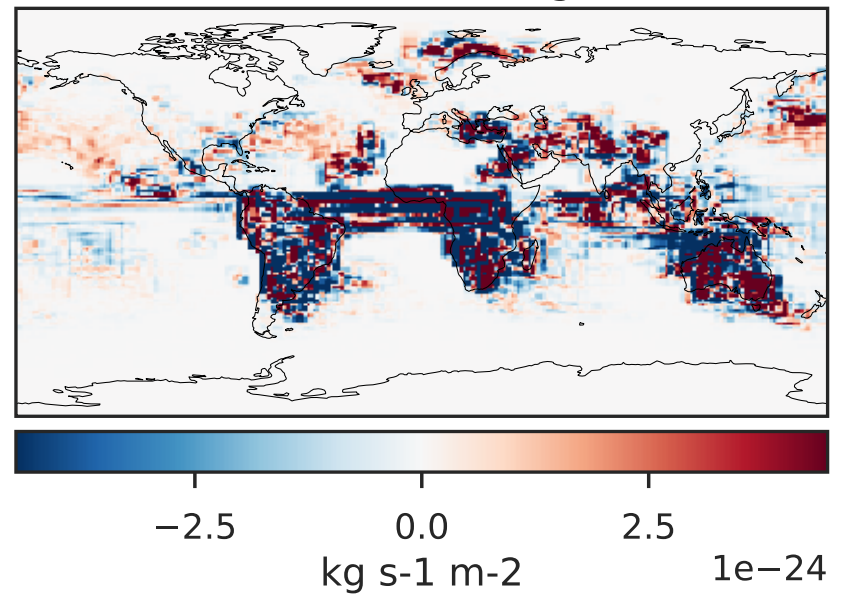
GCHP 14.2.2 using wind (Dev), Normalized by Area  
c30



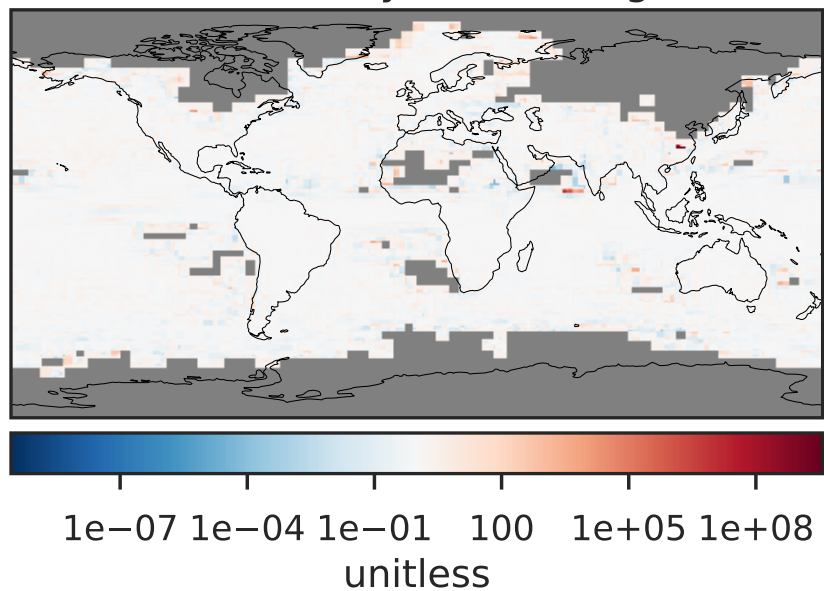
Difference (1x1.25)  
Dev - Ref, Dynamic Range



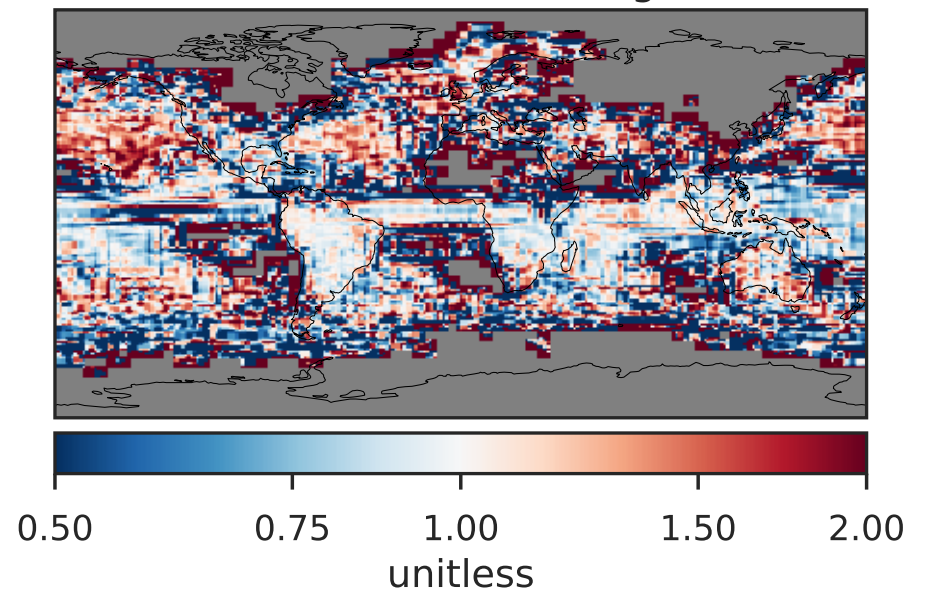
Difference (1x1.25)  
Dev - Ref, Restricted Range [5%,95%]



Ratio (1x1.25)  
Dev/Ref, Dynamic Range

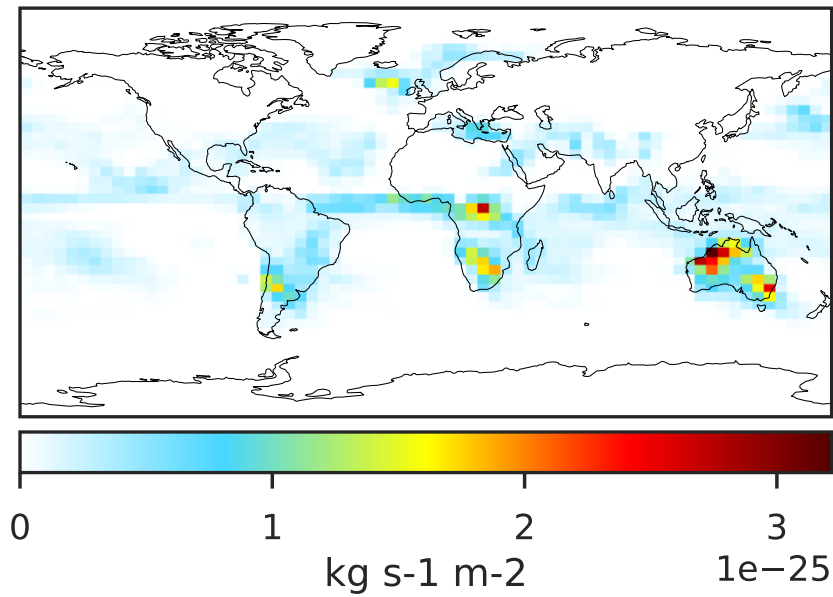


Ratio (1x1.25)  
Dev/Ref, Fixed Range

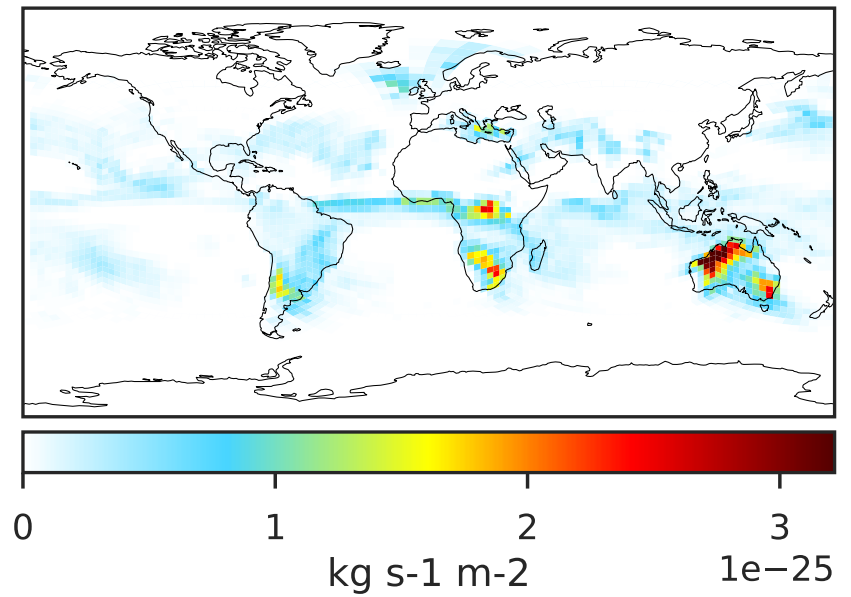


# WetLossConv\_Pb210s (Jan2019)

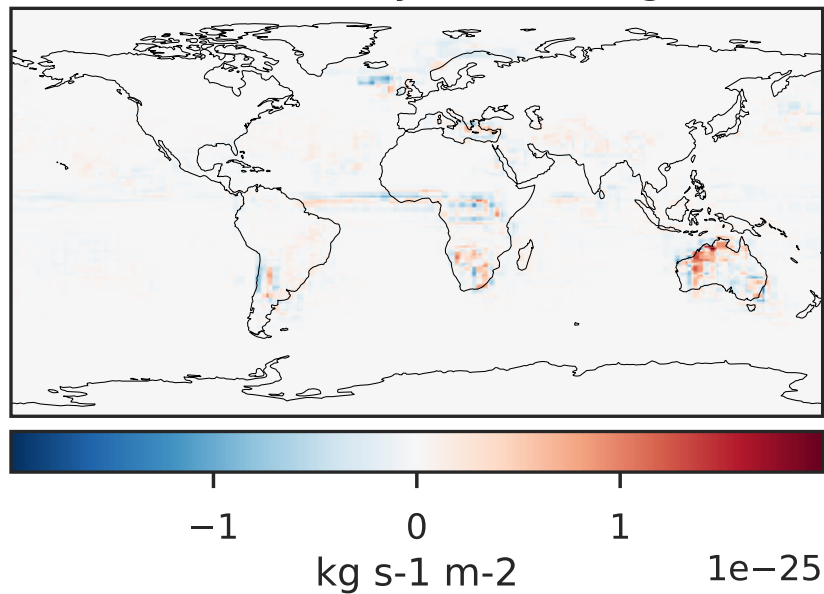
GCC 14.2.2 (Ref), Normalized by Area  
4.0x5.0



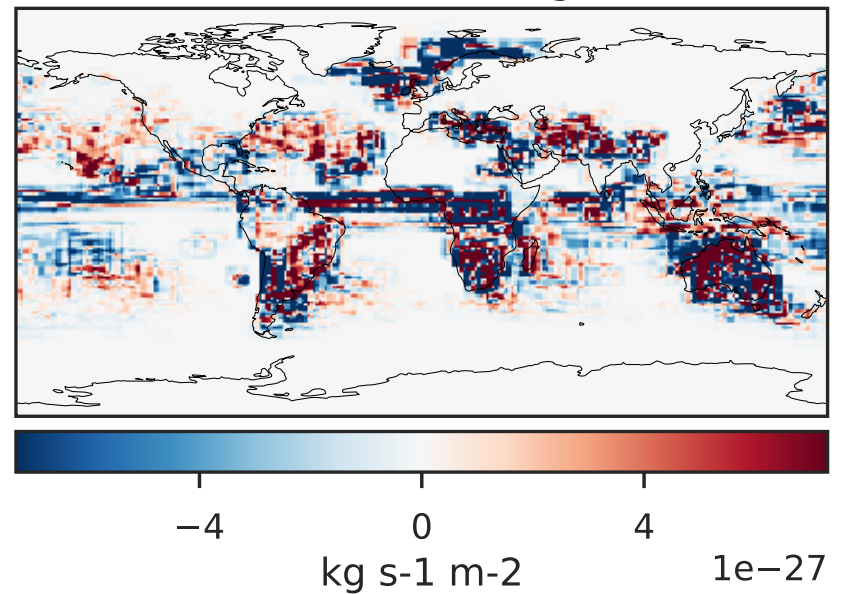
GCHP 14.2.2 using wind (Dev), Normalized by Area  
c30



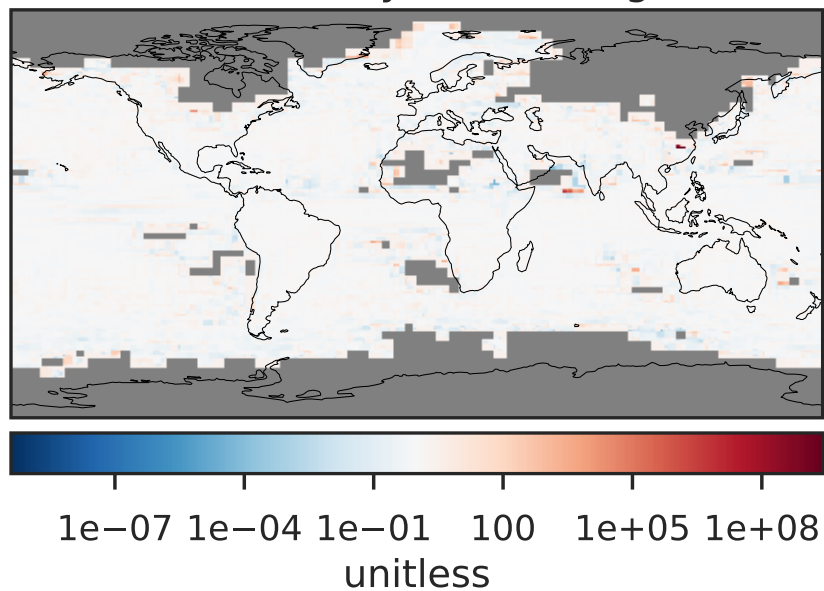
Difference (1x1.25)  
Dev - Ref, Dynamic Range



Difference (1x1.25)  
Dev - Ref, Restricted Range [5%,95%]



Ratio (1x1.25)  
Dev/Ref, Dynamic Range



Ratio (1x1.25)  
Dev/Ref, Fixed Range

