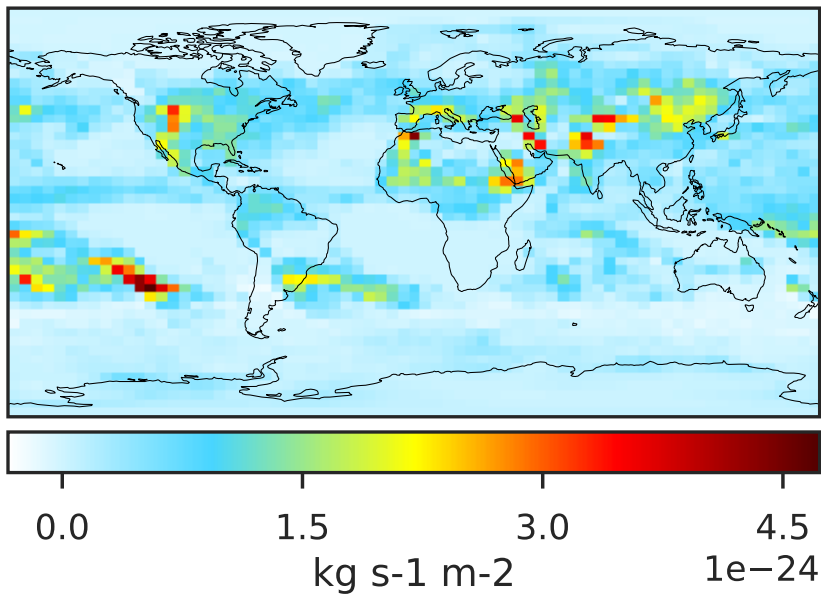
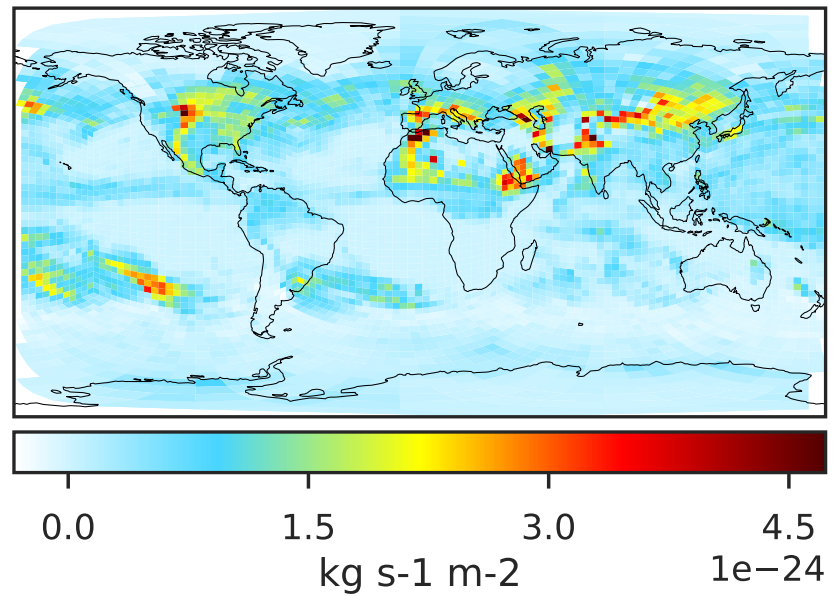


WetLossLS_Be10 (Jul2019)

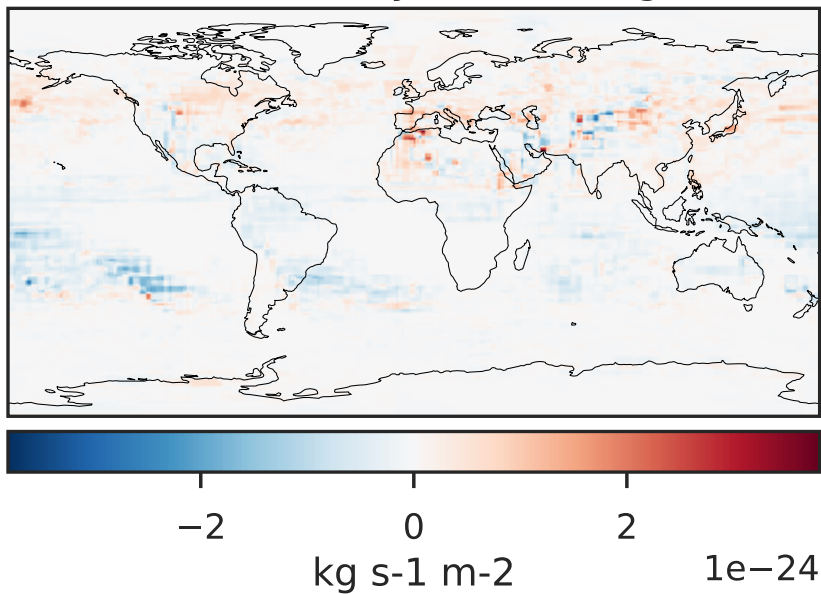
GCC 14.2.2 (Ref), Normalized by Area
4.0x5.0



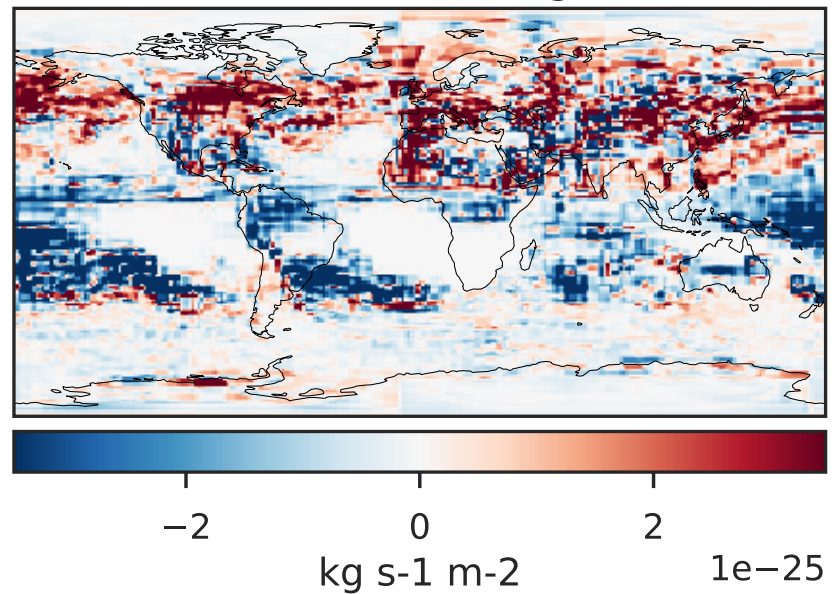
GCHP 14.2.2 using wind (Dev), Normalized by Area
c30



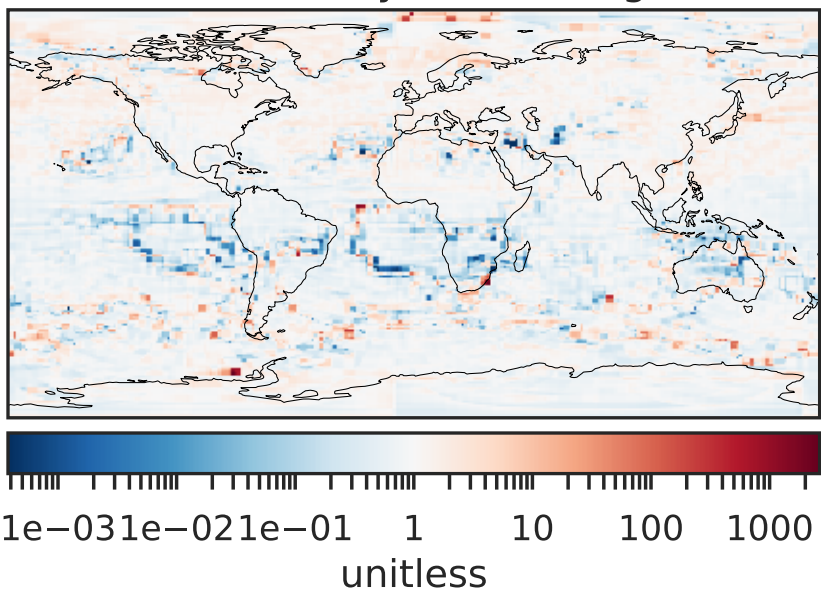
Difference (1x1.25)
Dev - Ref, Dynamic Range



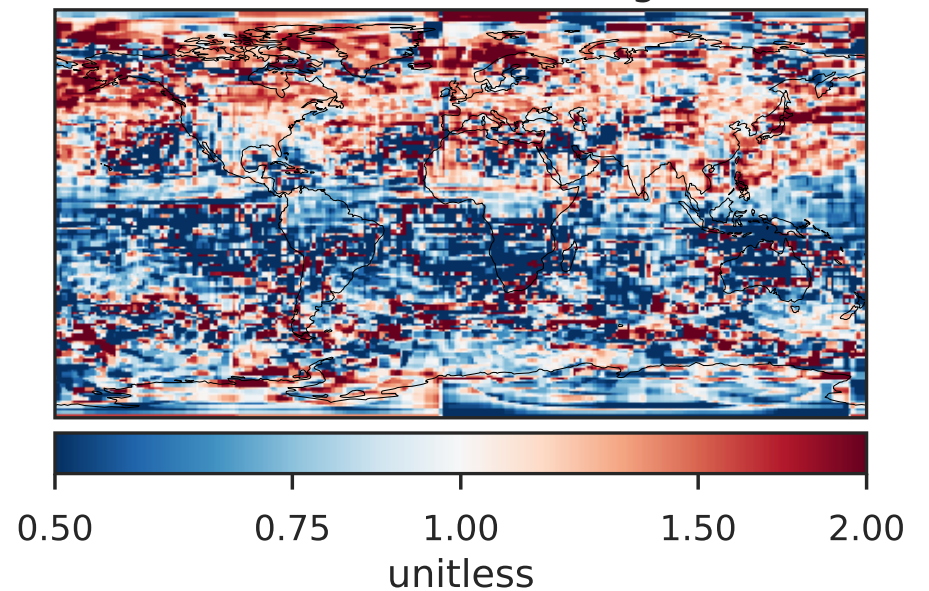
Difference (1x1.25)
Dev - Ref, Restricted Range [5%,95%]



Ratio (1x1.25)
Dev/Ref, Dynamic Range

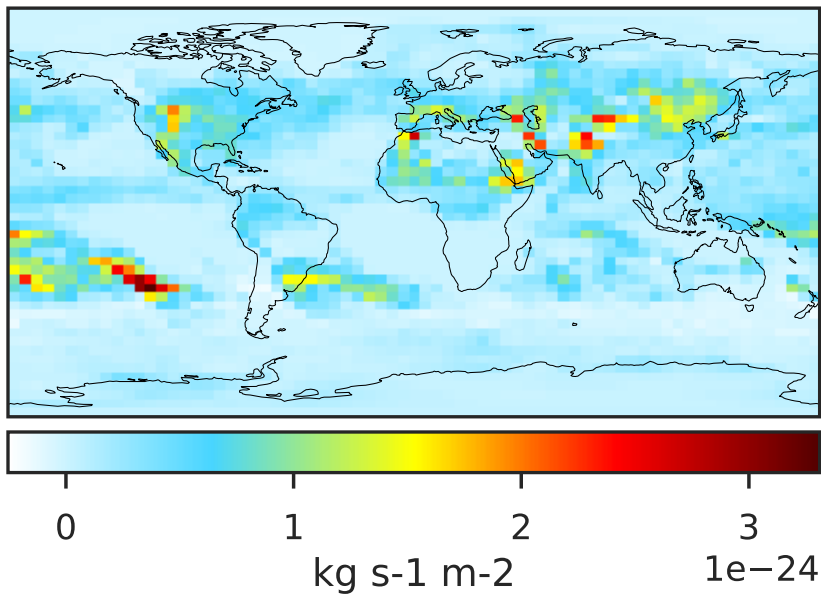


Ratio (1x1.25)
Dev/Ref, Fixed Range

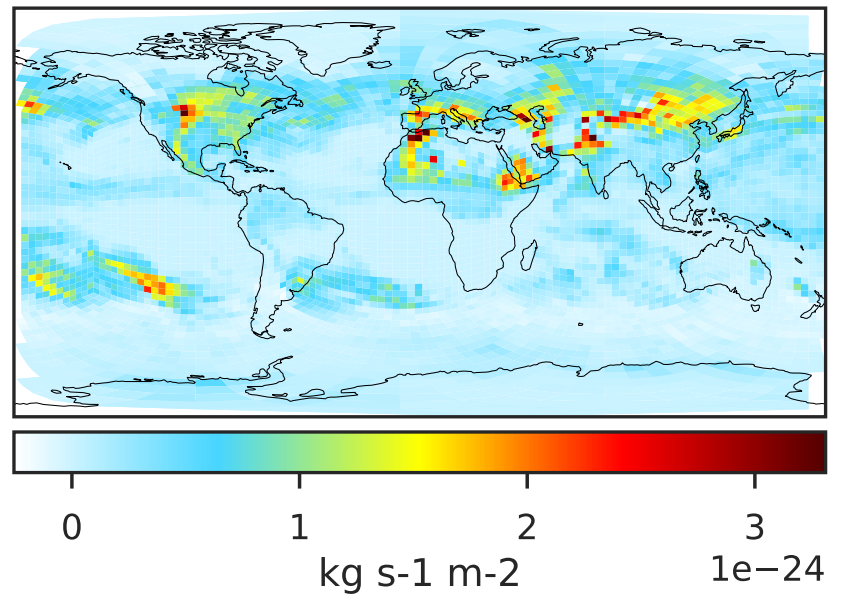


WetLossLS_Be10s (Jul2019)

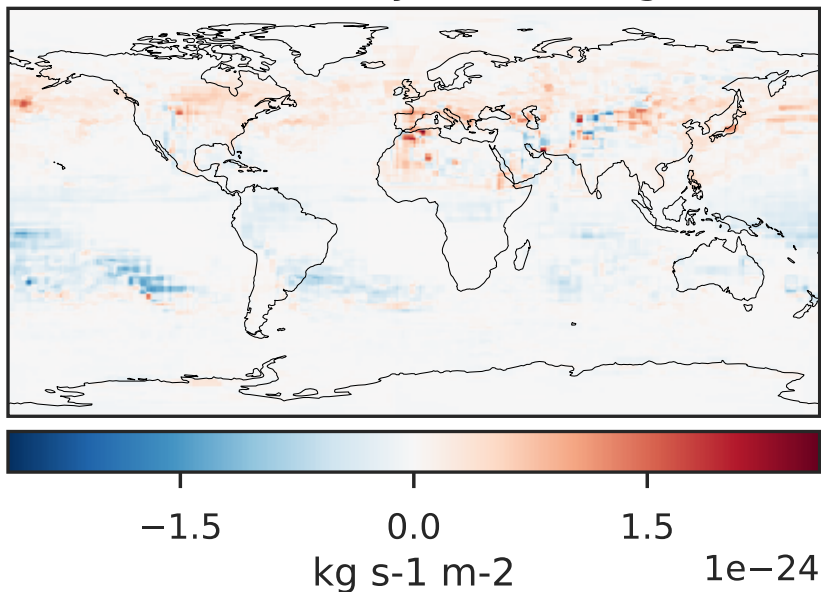
GCC 14.2.2 (Ref), Normalized by Area
4.0x5.0



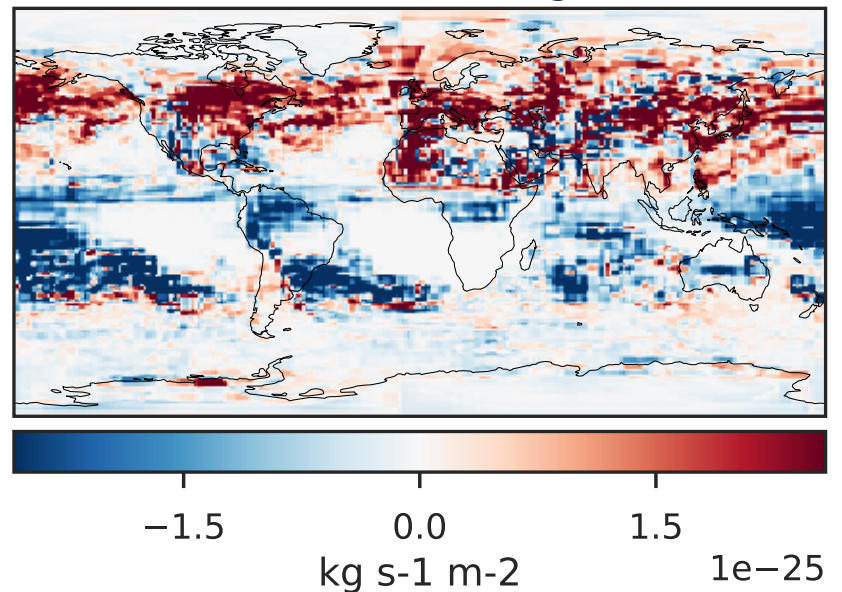
GCHP 14.2.2 using wind (Dev), Normalized by Area
c30



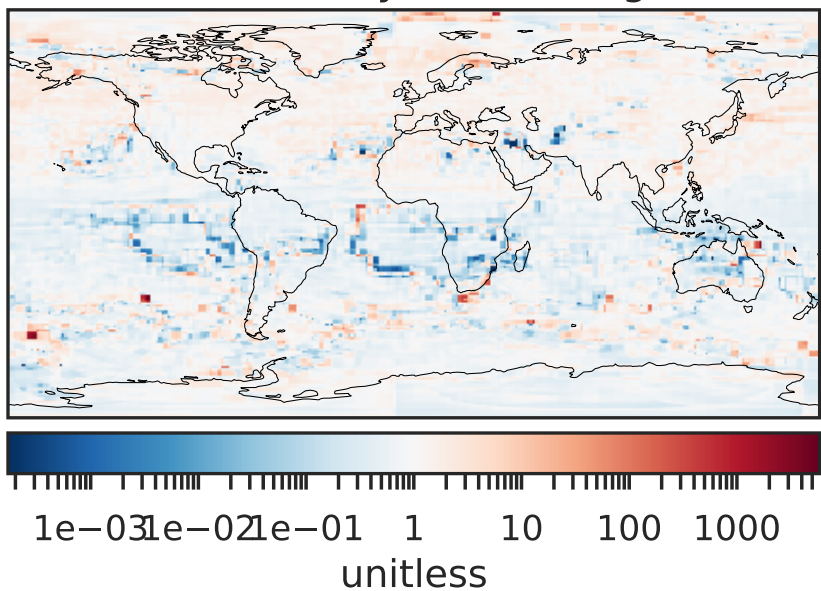
Difference (1x1.25)
Dev - Ref, Dynamic Range



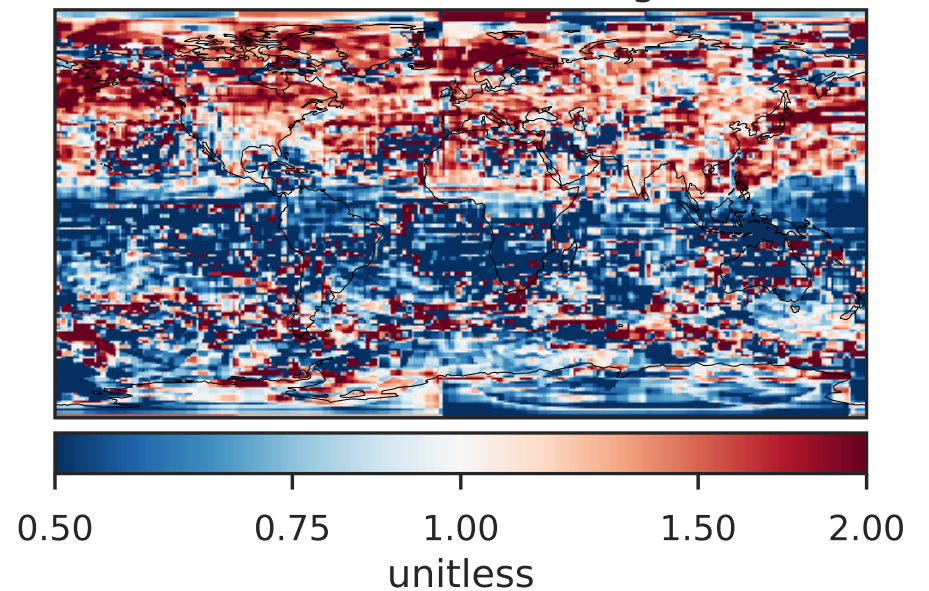
Difference (1x1.25)
Dev - Ref, Restricted Range [5%,95%]



Ratio (1x1.25)
Dev/Ref, Dynamic Range

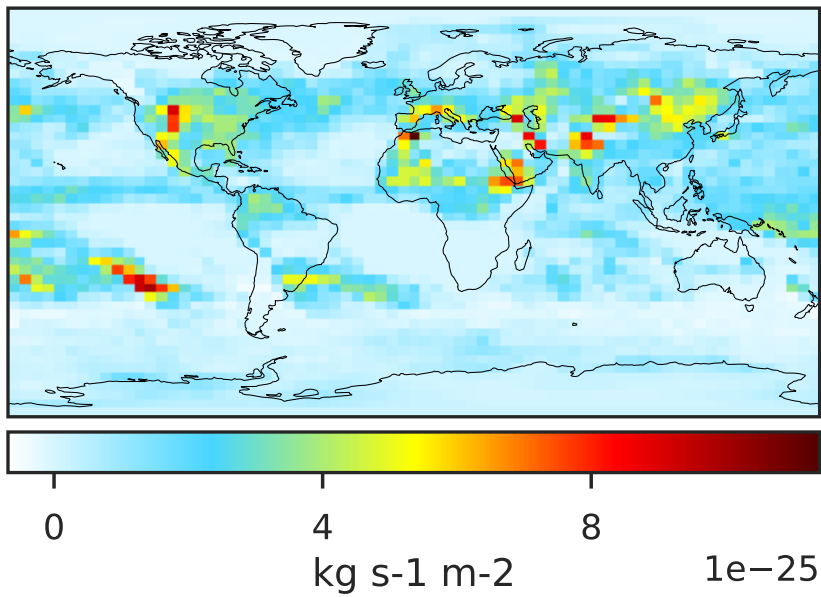


Ratio (1x1.25)
Dev/Ref, Fixed Range

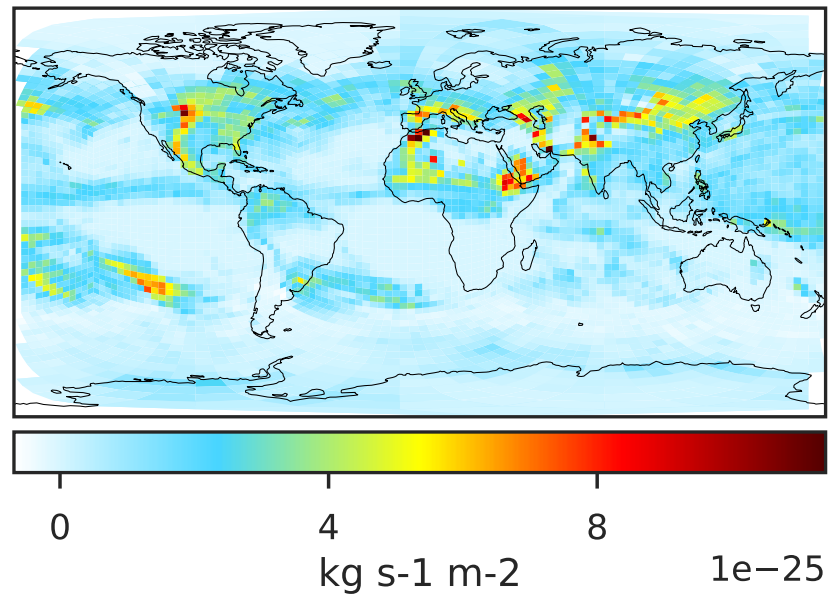


WetLossLS_Be7 (Jul2019)

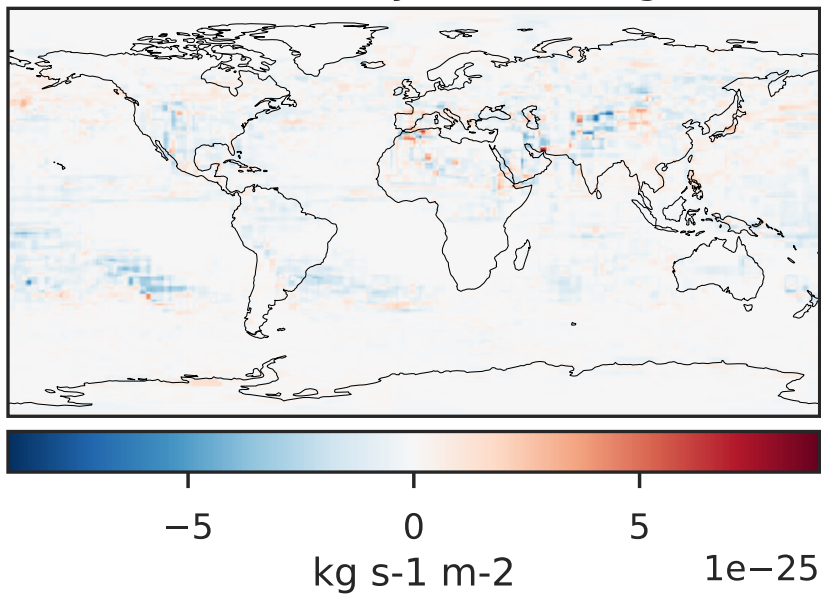
GCC 14.2.2 (Ref), Normalized by Area
4.0x5.0



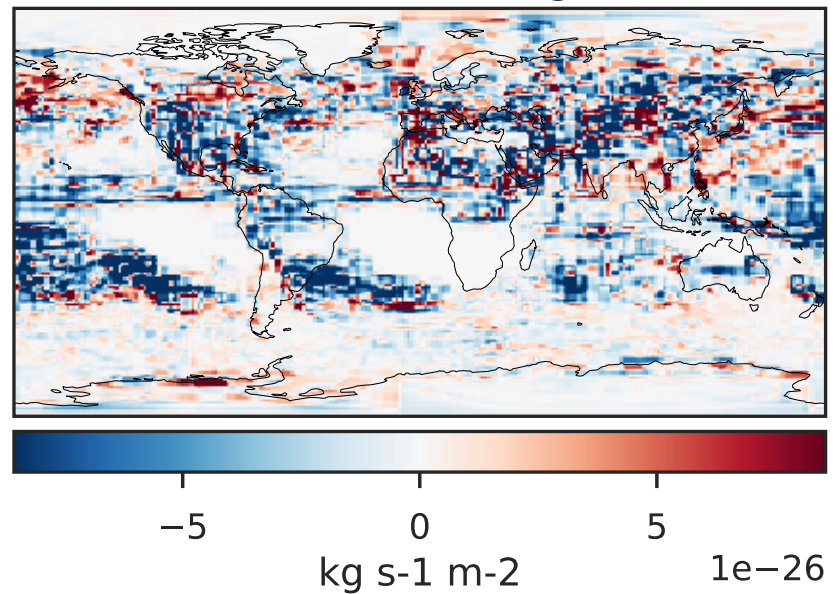
GCHP 14.2.2 using wind (Dev), Normalized by Area
c30



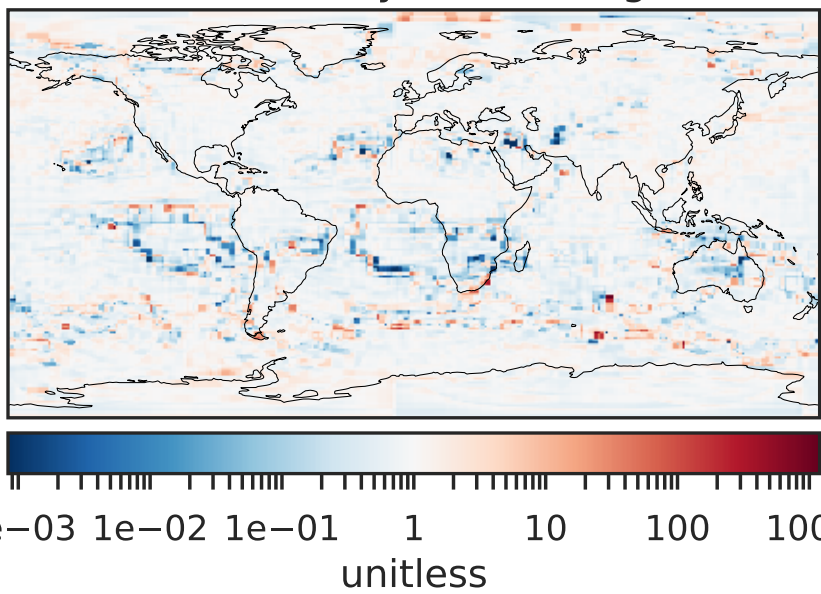
Difference (1x1.25)
Dev - Ref, Dynamic Range



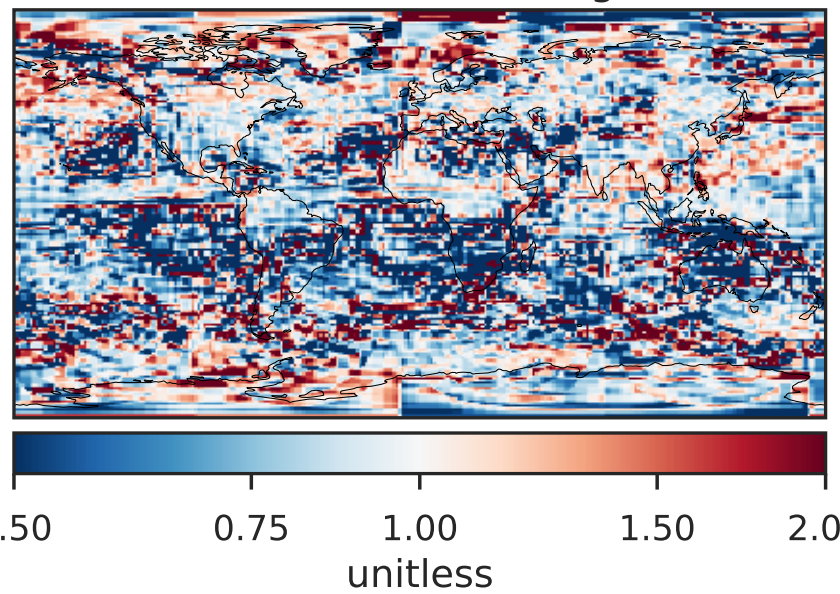
Difference (1x1.25)
Dev - Ref, Restricted Range [5%,95%]



Ratio (1x1.25)
Dev/Ref, Dynamic Range

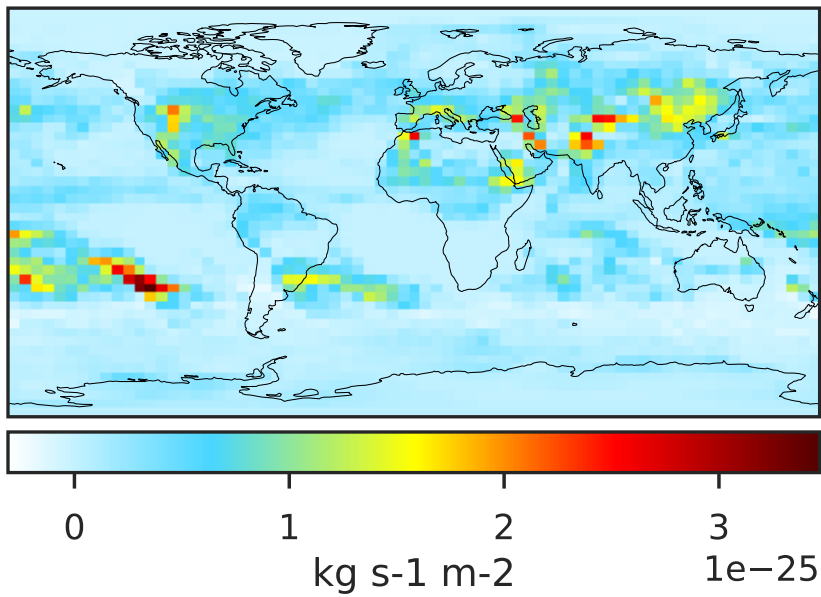


Ratio (1x1.25)
Dev/Ref, Fixed Range

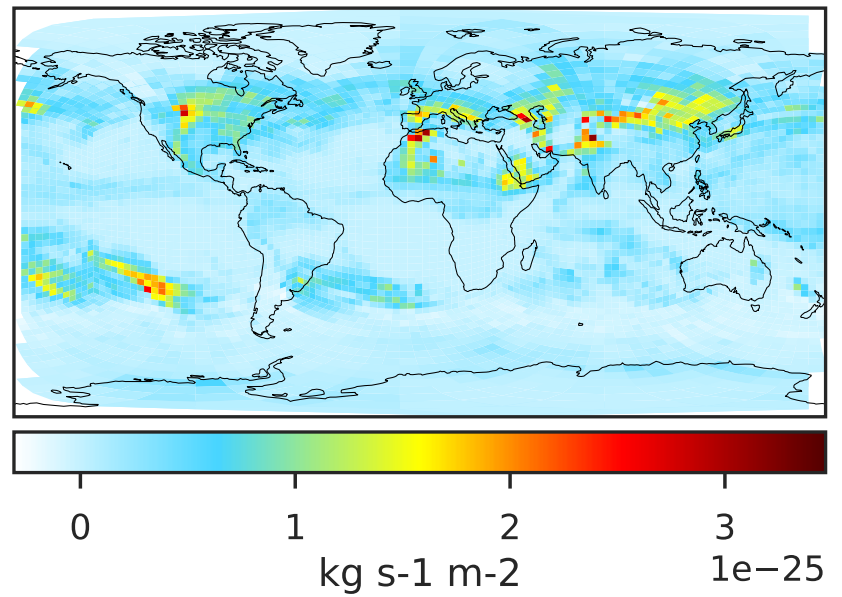


WetLossLS_Be7s (Jul2019)

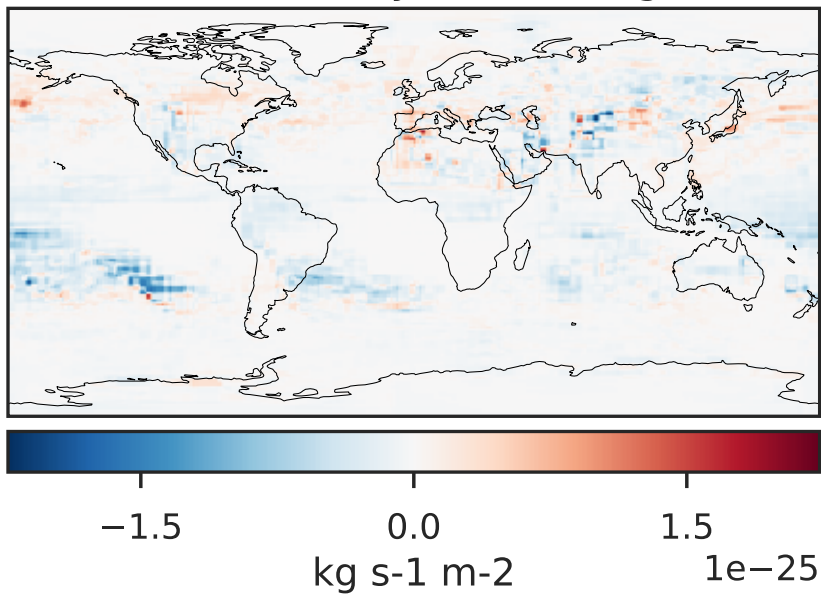
GCC 14.2.2 (Ref), Normalized by Area
4.0x5.0



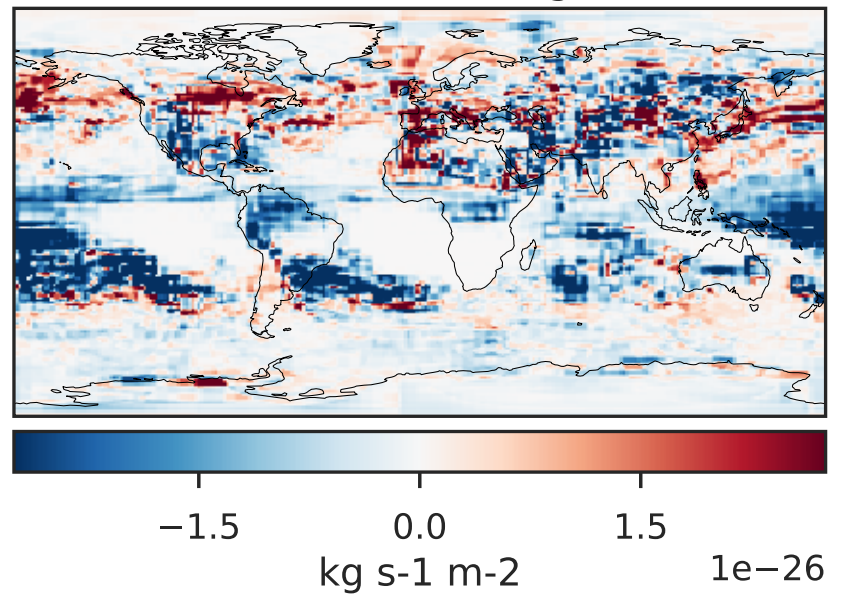
GCHP 14.2.2 using wind (Dev), Normalized by Area
c30



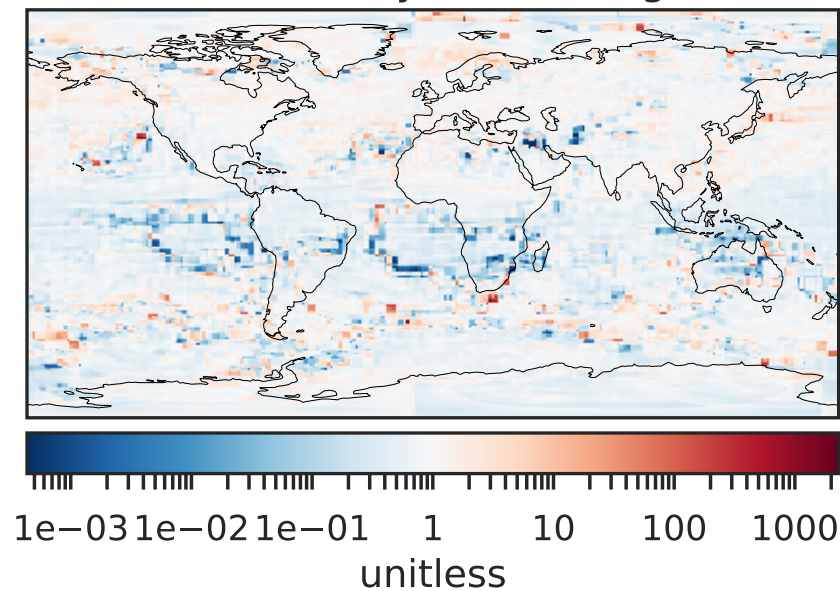
Difference (1x1.25)
Dev - Ref, Dynamic Range



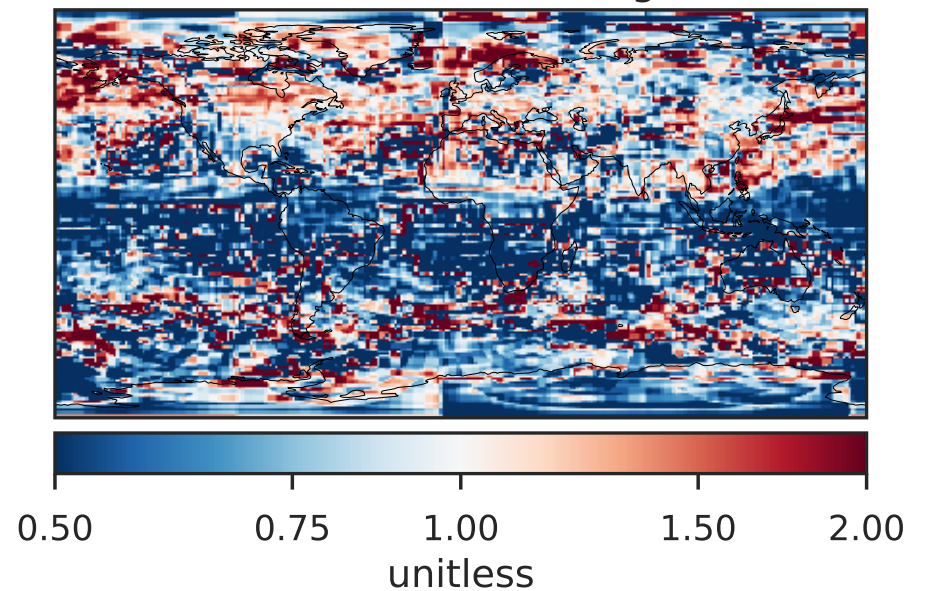
Difference (1x1.25)
Dev - Ref, Restricted Range [5%,95%]



Ratio (1x1.25)
Dev/Ref, Dynamic Range

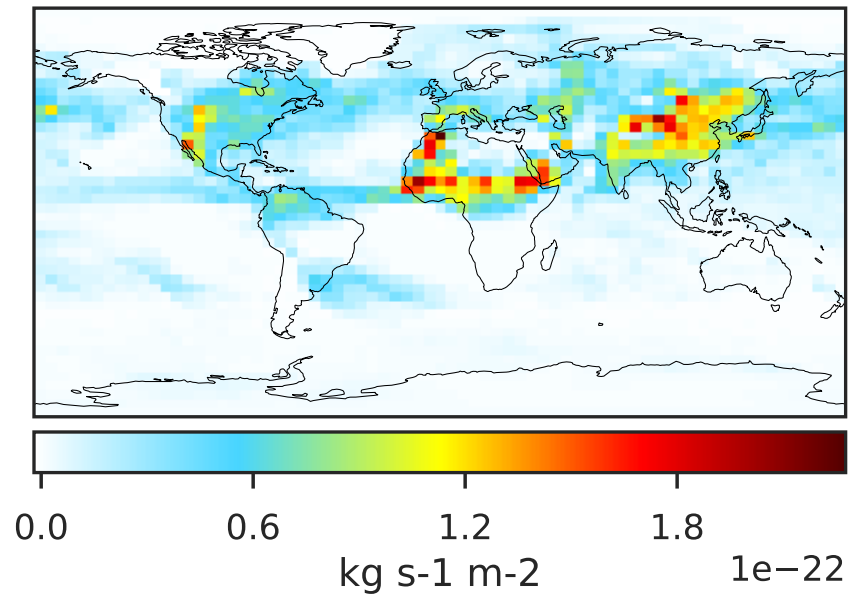


Ratio (1x1.25)
Dev/Ref, Fixed Range

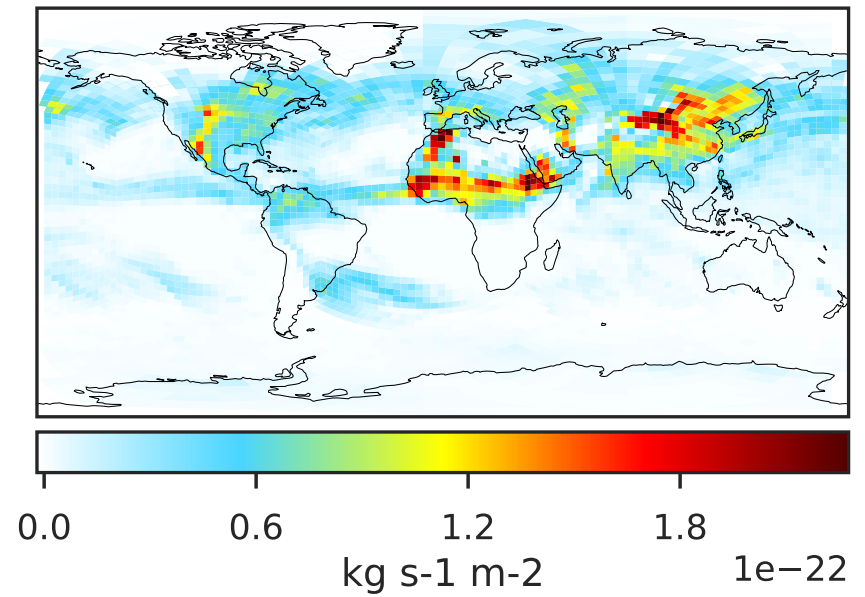


WetLossLS_Pb210 (Jul2019)

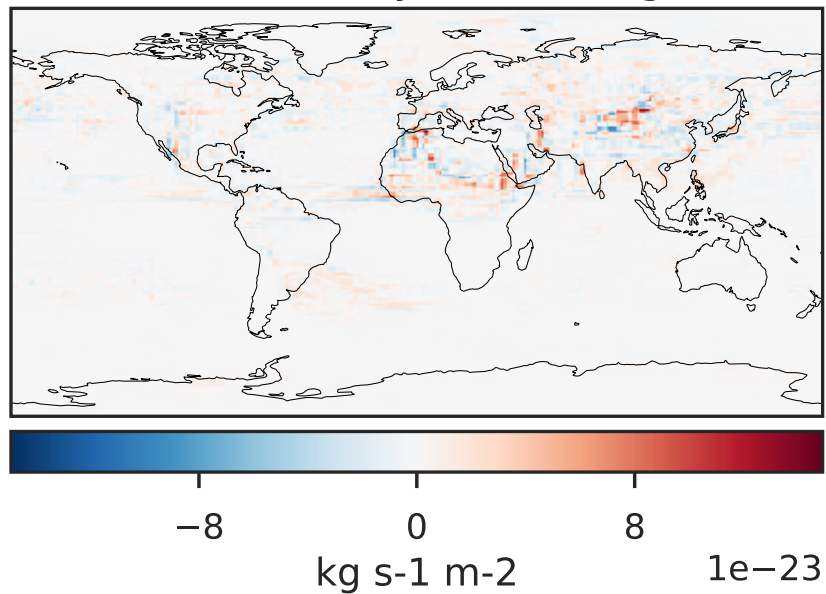
GCC 14.2.2 (Ref), Normalized by Area
4.0x5.0



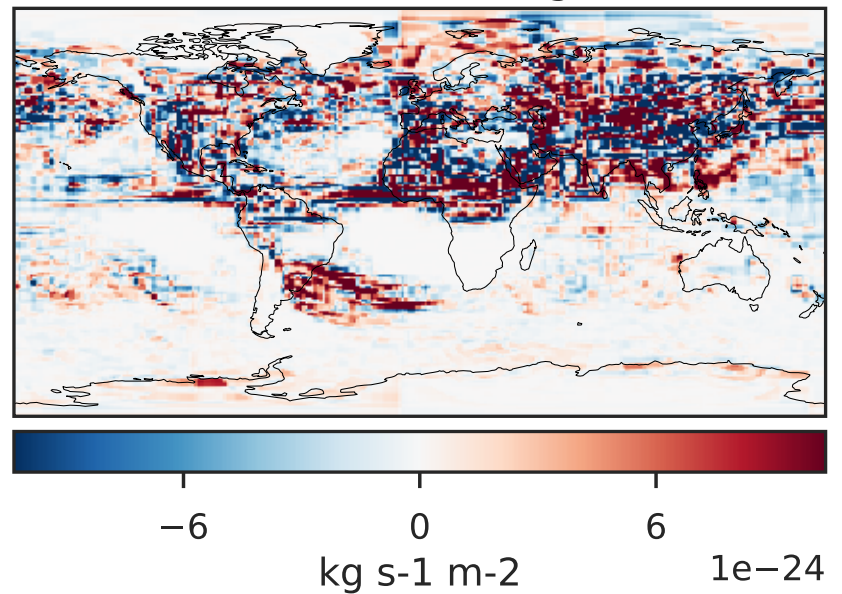
GCHP 14.2.2 using wind (Dev), Normalized by Area
c30



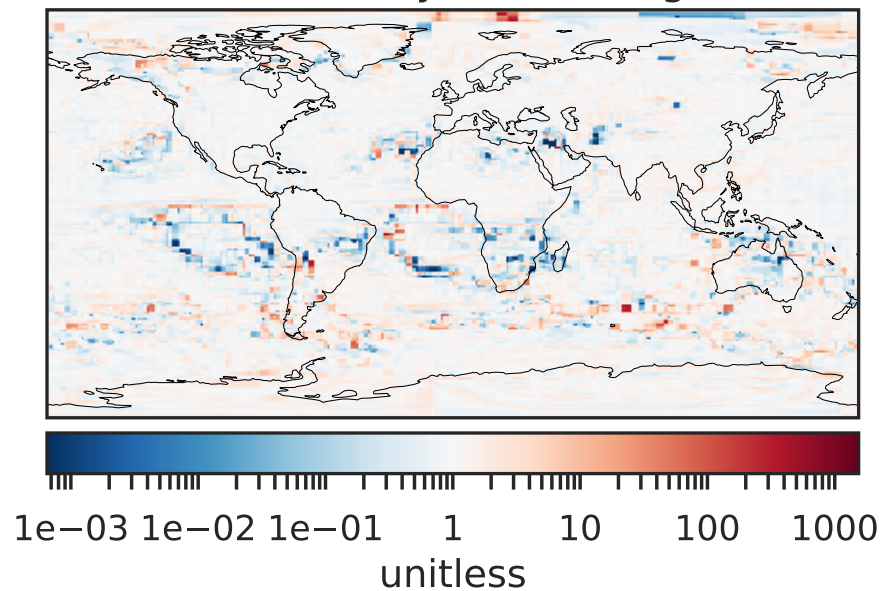
Difference (1x1.25)
Dev - Ref, Dynamic Range



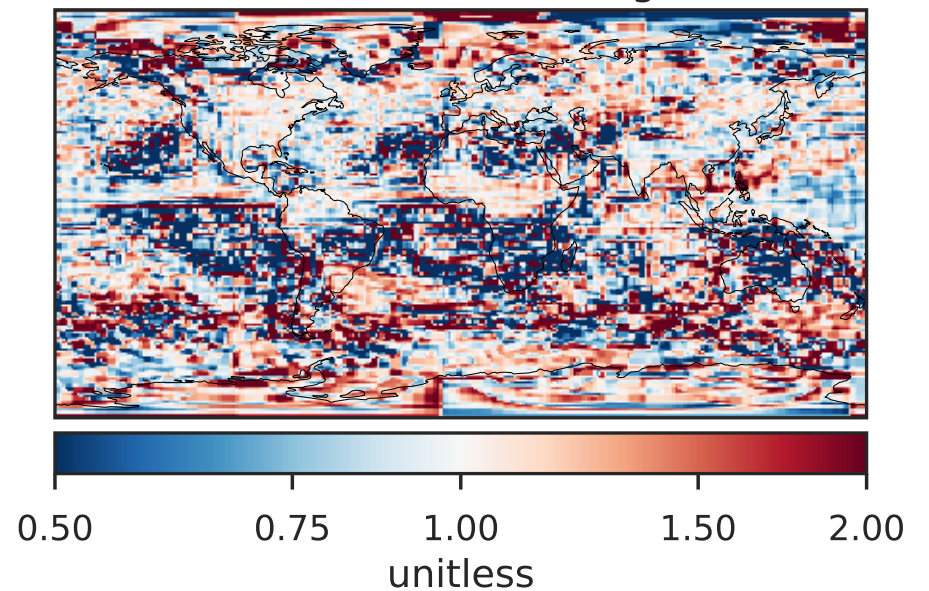
Difference (1x1.25)
Dev - Ref, Restricted Range [5%,95%]



Ratio (1x1.25)
Dev/Ref, Dynamic Range

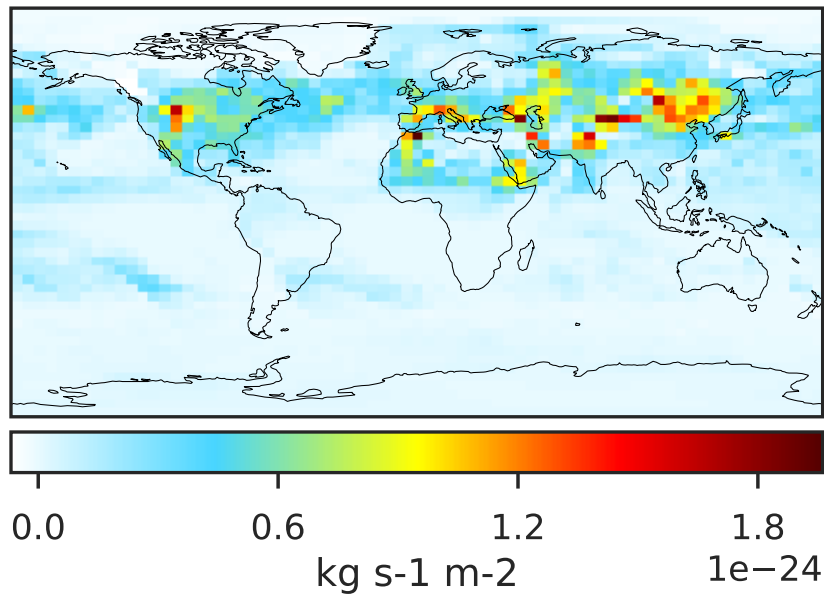


Ratio (1x1.25)
Dev/Ref, Fixed Range

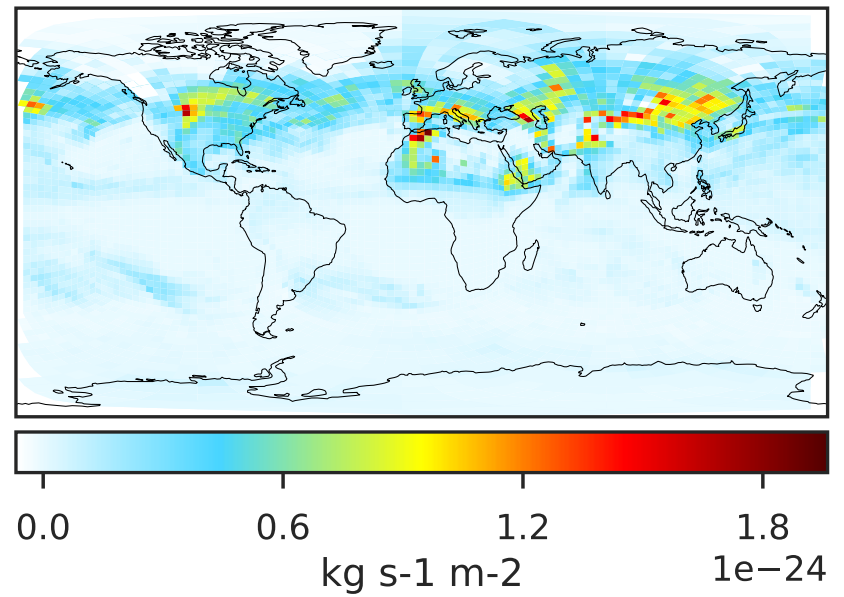


WetLossLS_Pb210s (Jul2019)

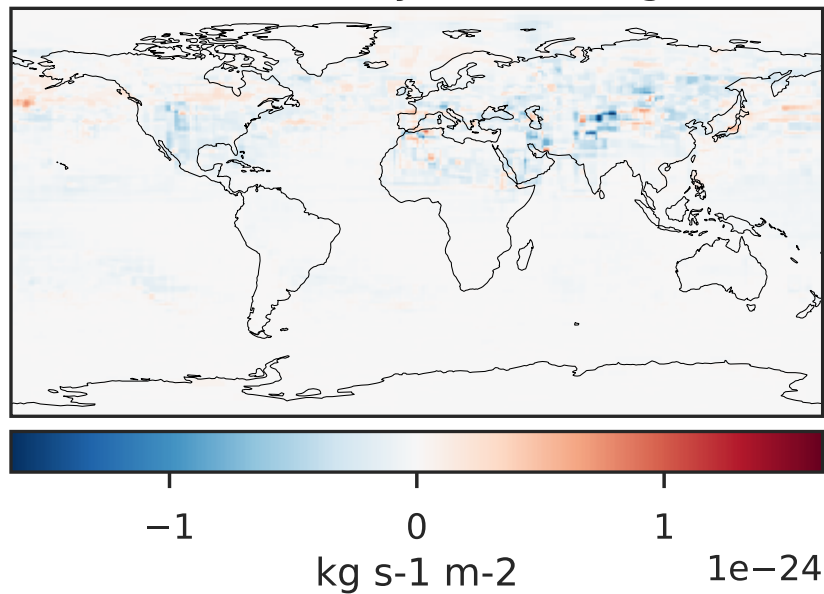
GCC 14.2.2 (Ref), Normalized by Area
4.0x5.0



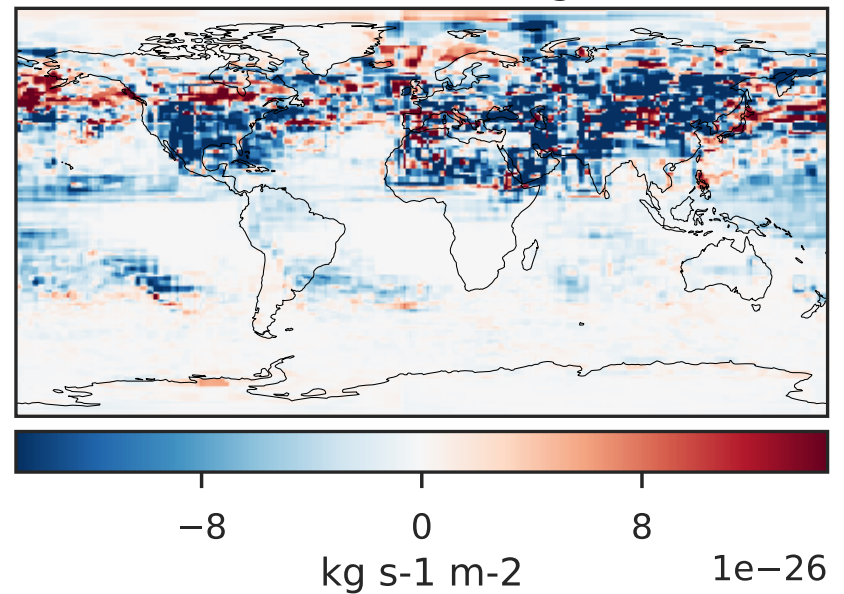
GCHP 14.2.2 using wind (Dev), Normalized by Area
c30



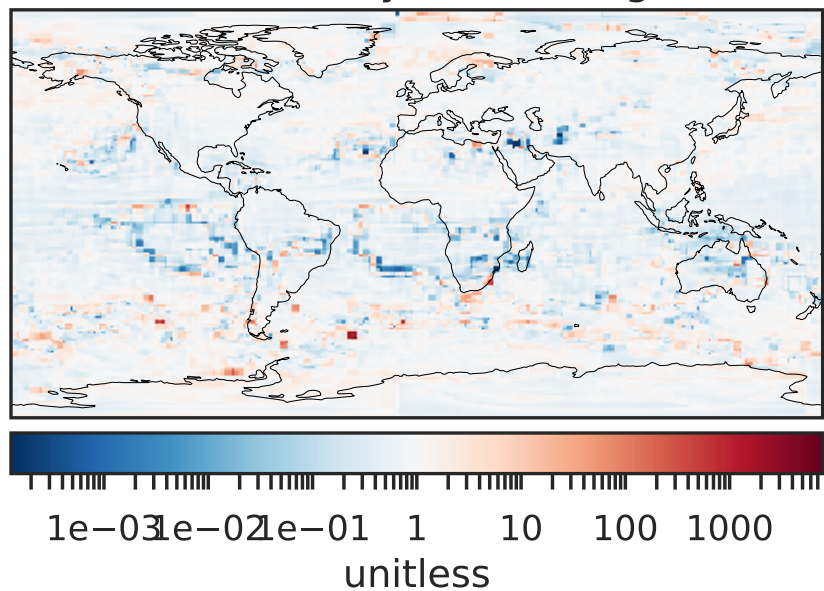
Difference (1x1.25)
Dev - Ref, Dynamic Range



Difference (1x1.25)
Dev - Ref, Restricted Range [5%,95%]



Ratio (1x1.25)
Dev/Ref, Dynamic Range



Ratio (1x1.25)
Dev/Ref, Fixed Range

