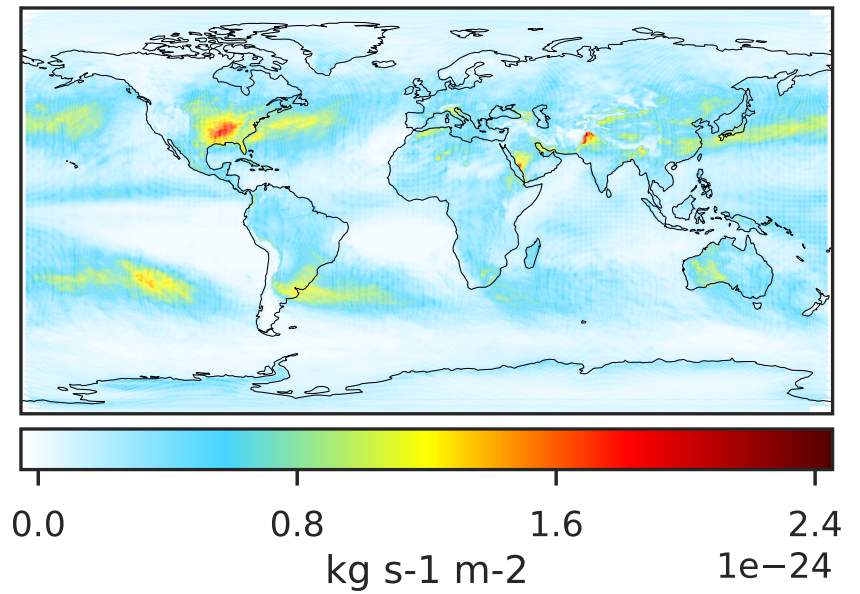
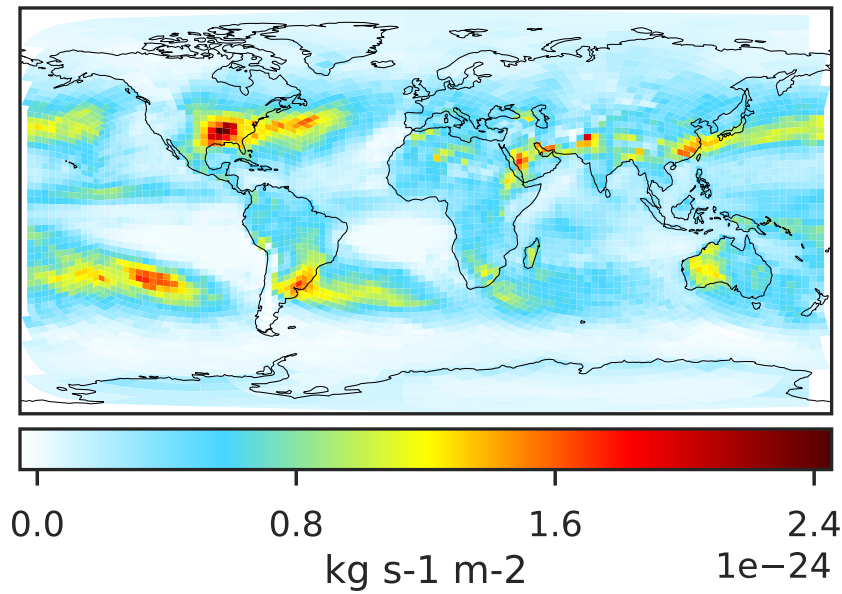
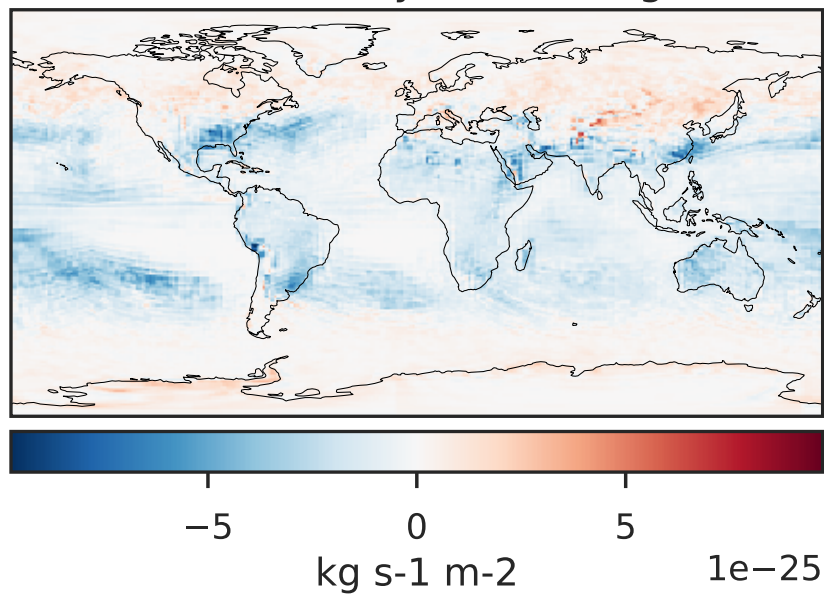


WetLossLS_Be10 (AnnualMean)

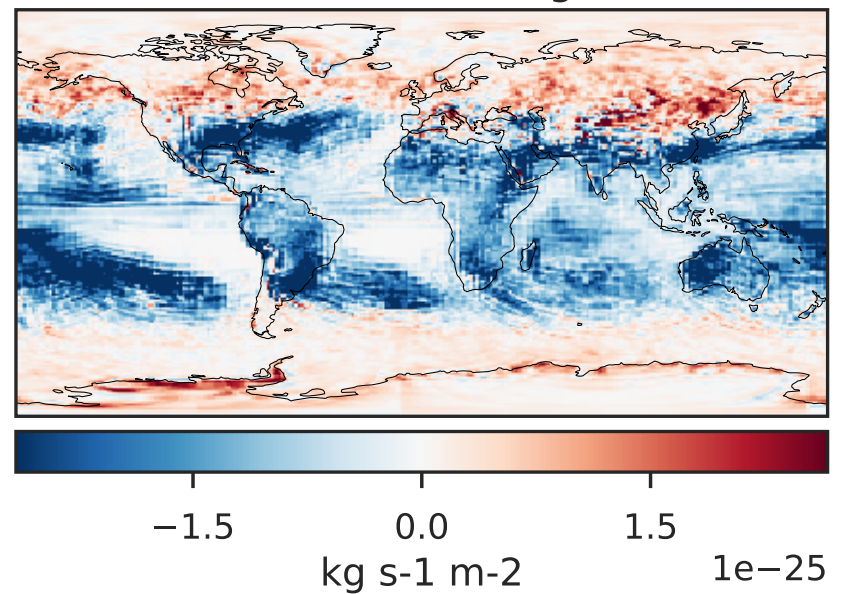
GCHP 14.2.2 using wind (c30) (Ref), Normalized by Area c30 GCHP 14.2.2 using wind (c180) (Dev), Normalized by Area c180



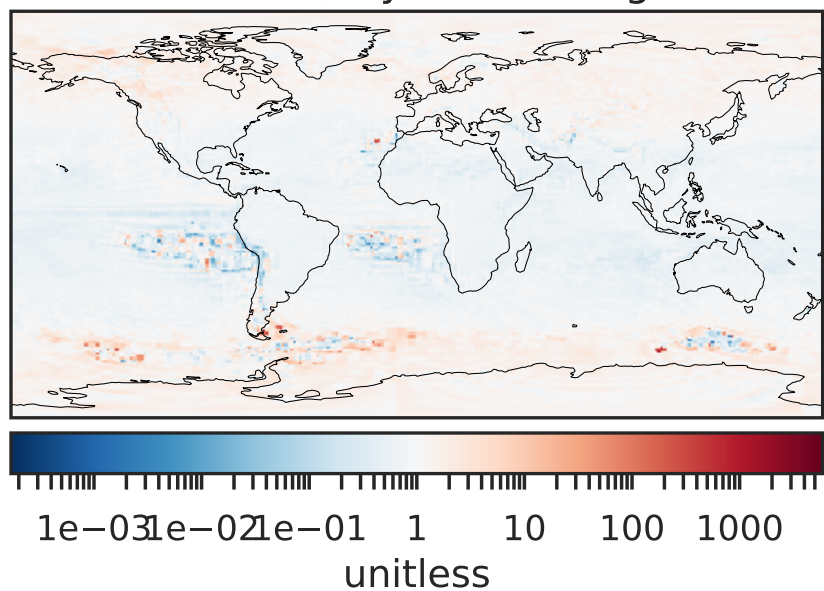
Difference (1x1.25)
Dev - Ref, Dynamic Range



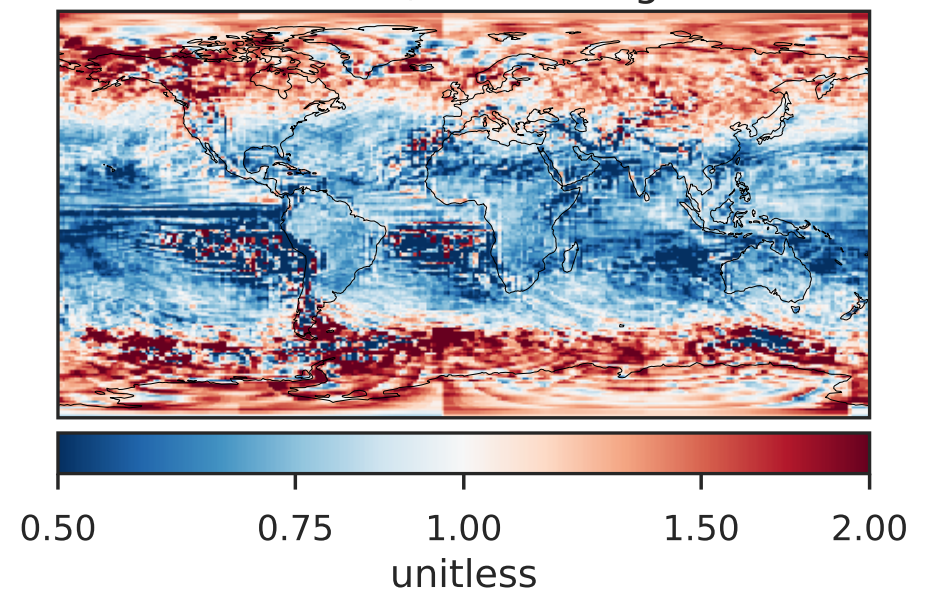
Difference (1x1.25)
Dev - Ref, Restricted Range [5%,95%]



Ratio (1x1.25)
Dev/Ref, Dynamic Range

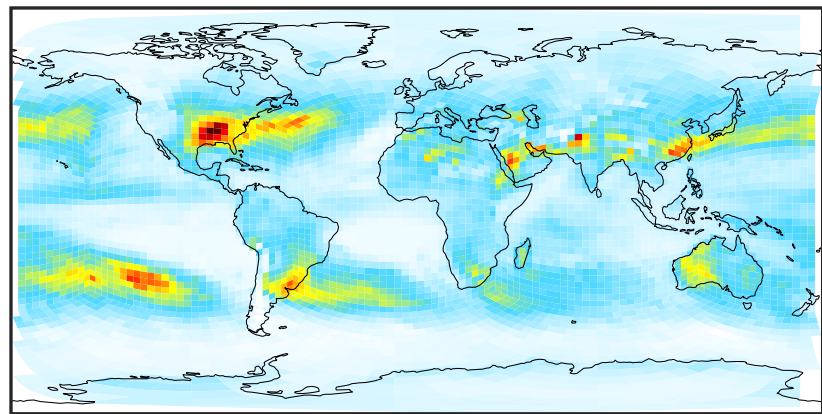


Ratio (1x1.25)
Dev/Ref, Fixed Range

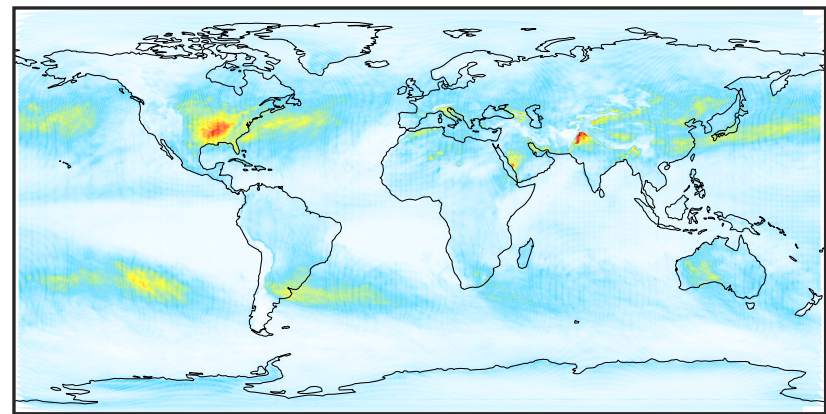


WetLossLS_Be10s (AnnualMean)

GCHP 14.2.2 using wind (c30) (Ref), Normalized by Area c30 GCHP 14.2.2 using wind (c180) (Dev), Normalized by Area c180

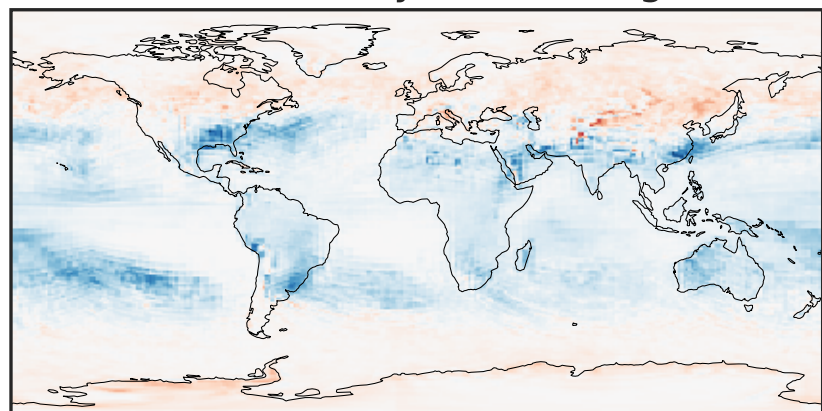


0.0 0.5 1.0 1.5
kg s-1 m-2 1e-24



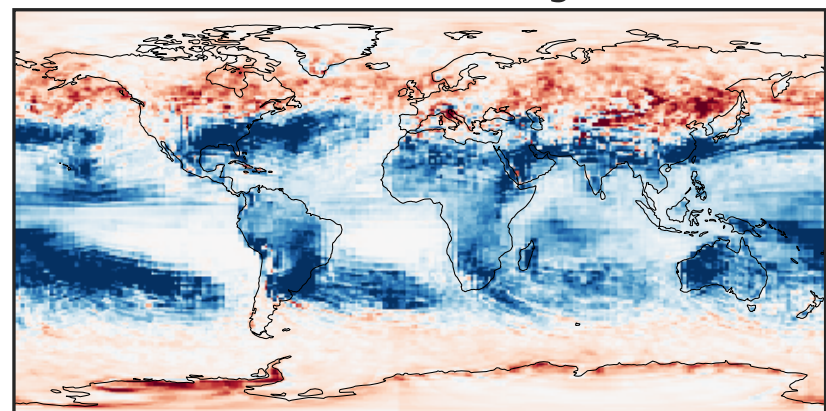
0.0 0.5 1.0 1.5
kg s-1 m-2 1e-24

Difference (1x1.25)
Dev - Ref, Dynamic Range



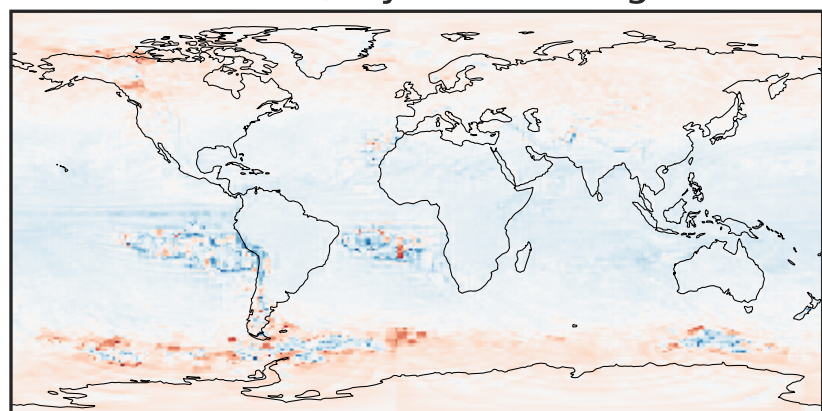
-4 0 4
kg s-1 m-2 1e-25

Difference (1x1.25)
Dev - Ref, Restricted Range [5%,95%]



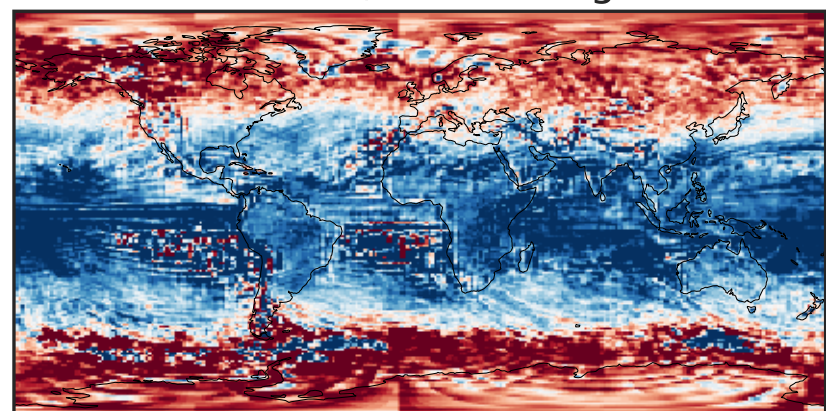
-1.5 0.0 1.5
kg s-1 m-2 1e-25

Ratio (1x1.25)
Dev/Ref, Dynamic Range



1e-03 1e-02 1e-01 1 10 100 1000
unitless

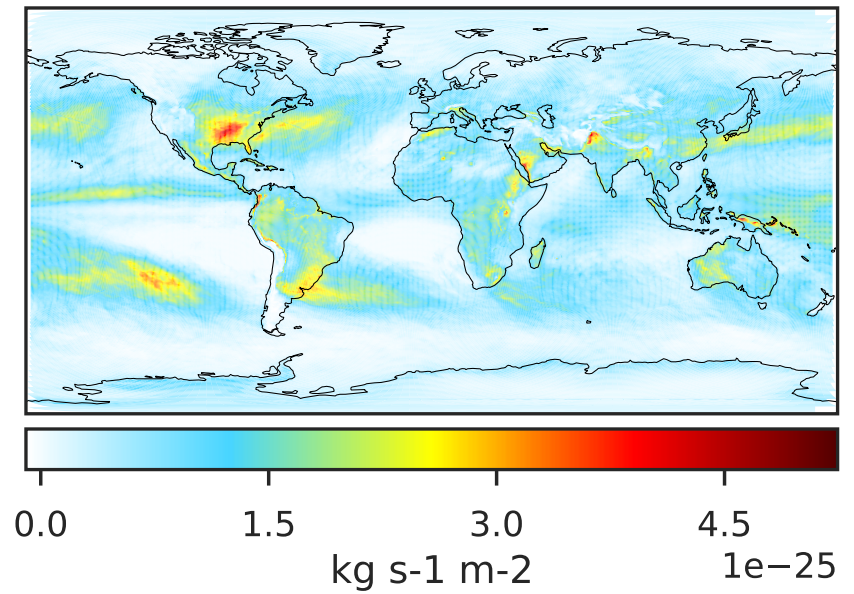
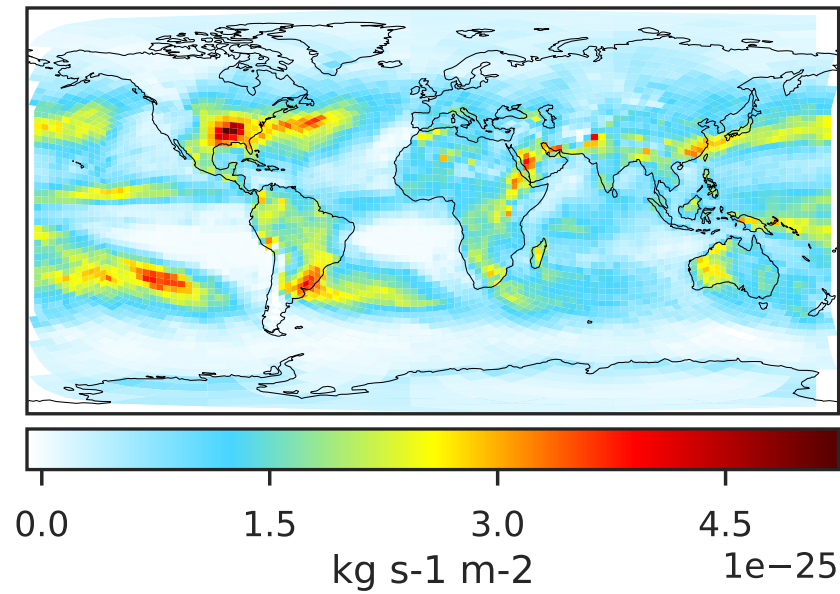
Ratio (1x1.25)
Dev/Ref, Fixed Range



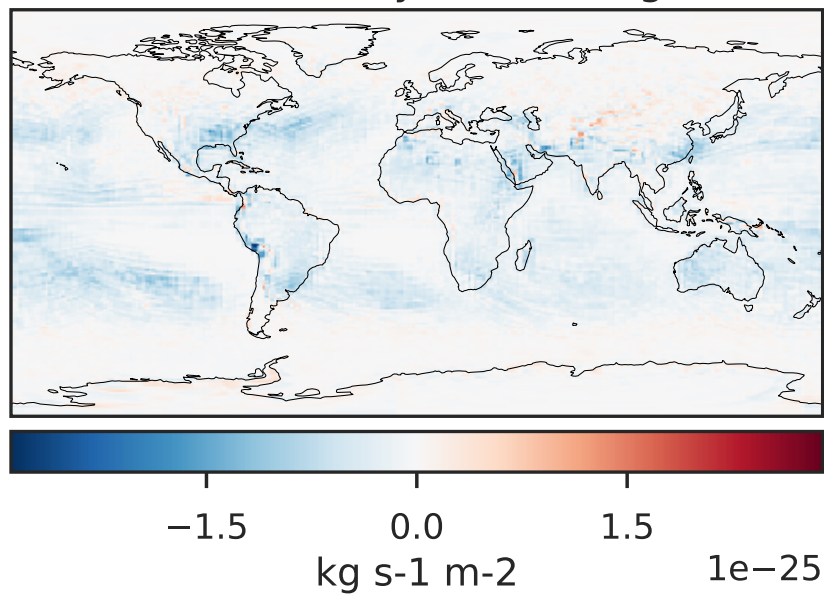
0.50 0.75 1.00 1.50 2.00
unitless

WetLossLS_Be7 (AnnualMean)

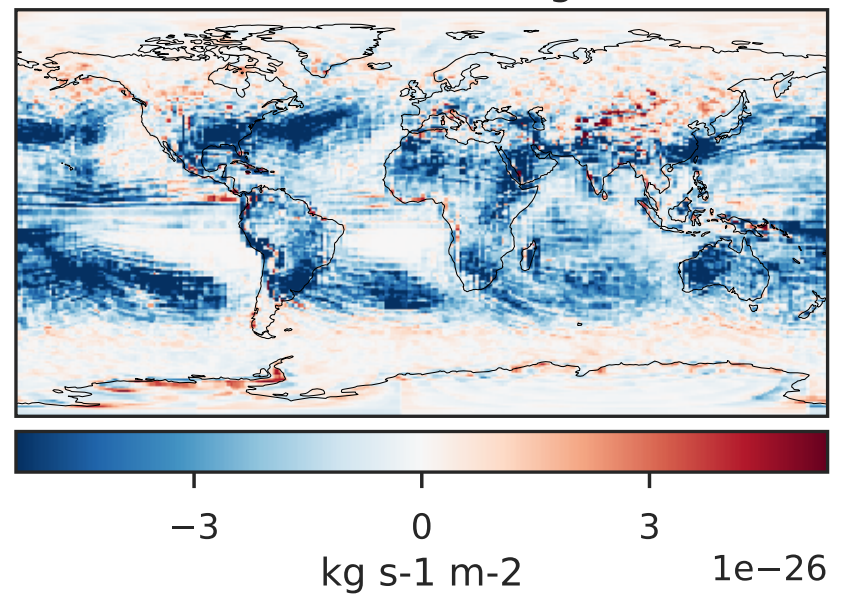
GCHP 14.2.2 using wind (c30) (Ref), Normalized by Area c30 GCHP 14.2.2 using wind (c180) (Dev), Normalized by Area c180



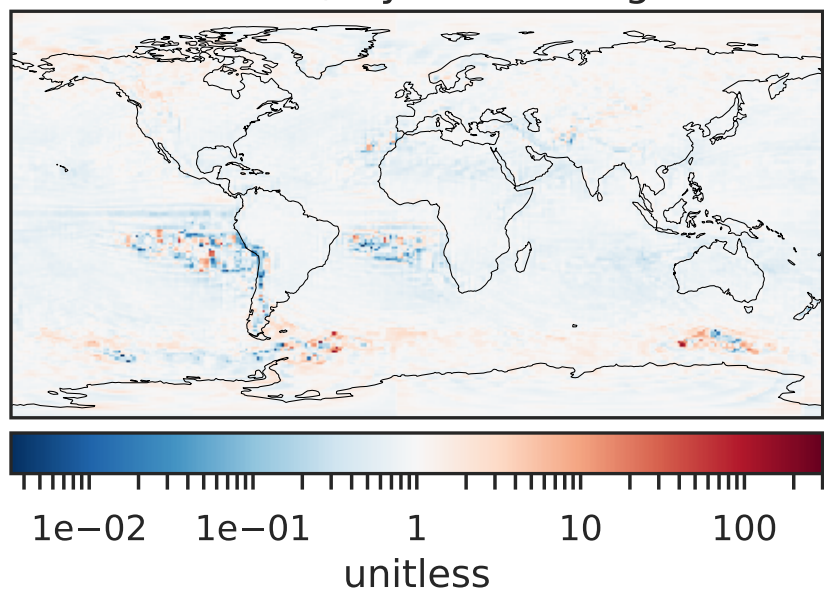
Difference (1x1.25)
Dev - Ref, Dynamic Range



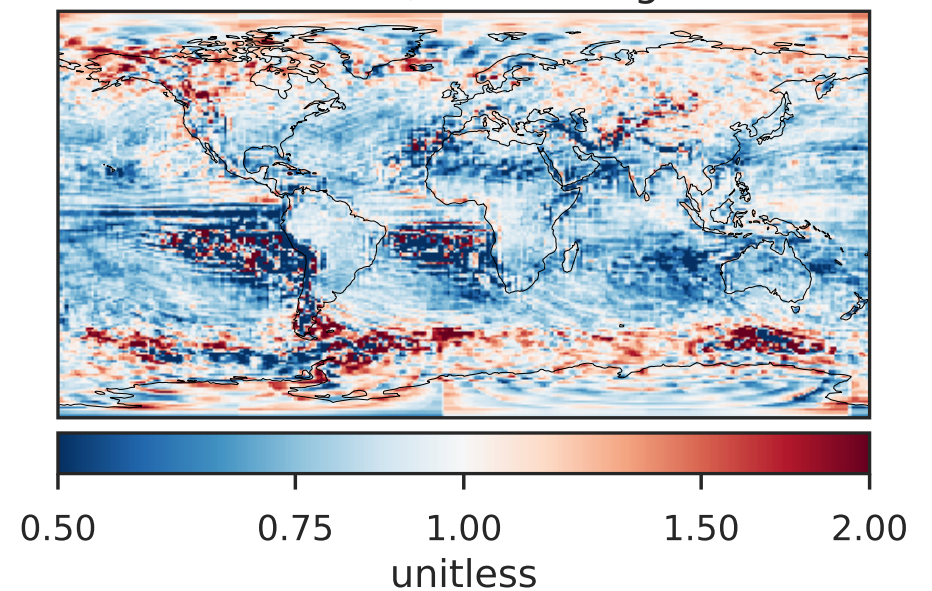
Difference (1x1.25)
Dev - Ref, Restricted Range [5%,95%]



Ratio (1x1.25)
Dev/Ref, Dynamic Range

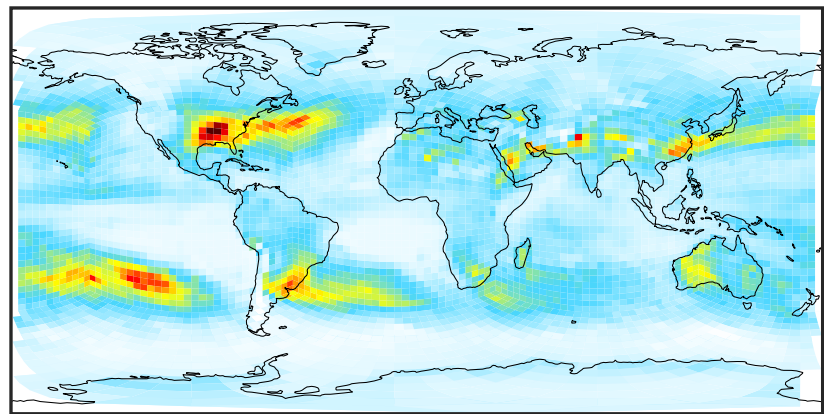


Ratio (1x1.25)
Dev/Ref, Fixed Range

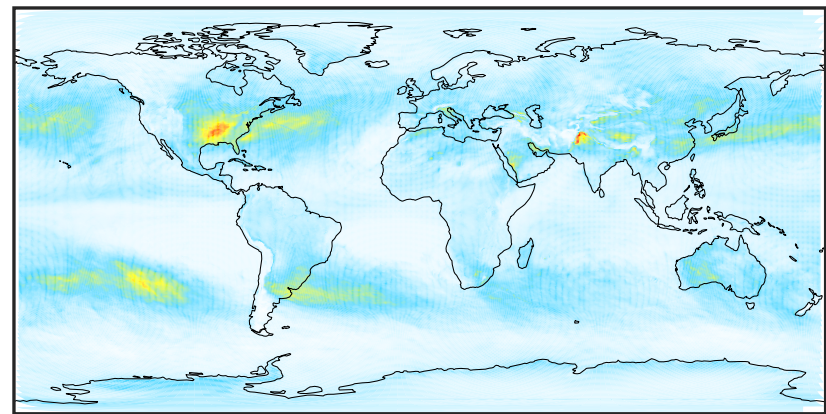


WetLossLS_Be7s (AnnualMean)

GCHP 14.2.2 using wind (c30) (Ref), Normalized by Area c30 GCHP 14.2.2 using wind (c180) (Dev), Normalized by Area c180

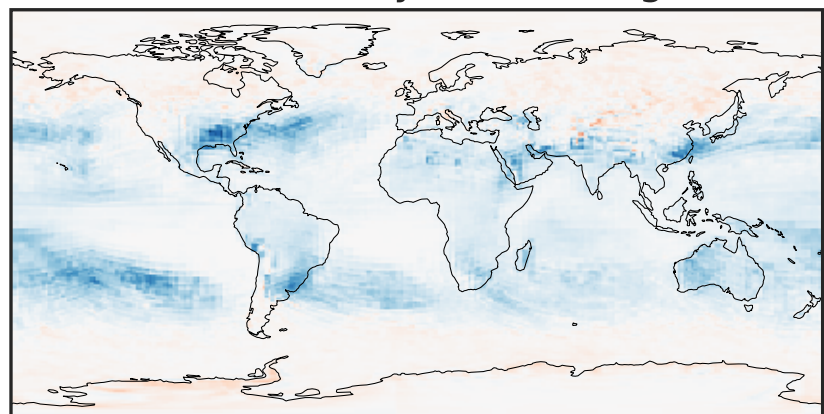


0.0 0.4 0.8 1.2
kg s-1 m-2 1e-25



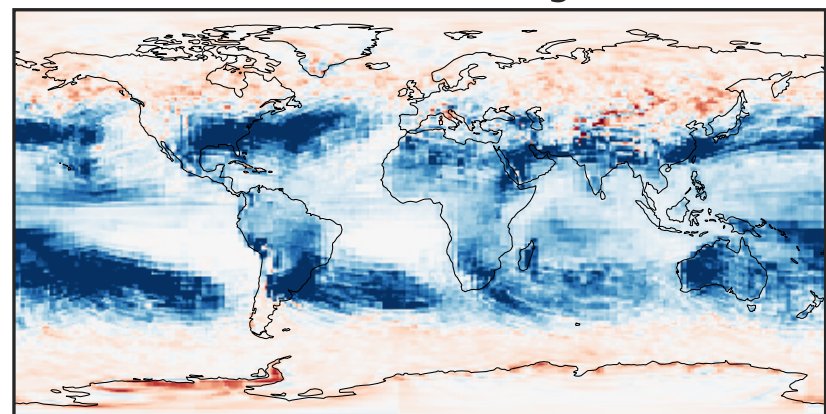
0.0 0.4 0.8 1.2
kg s-1 m-2 1e-25

Difference (1x1.25)
Dev - Ref, Dynamic Range



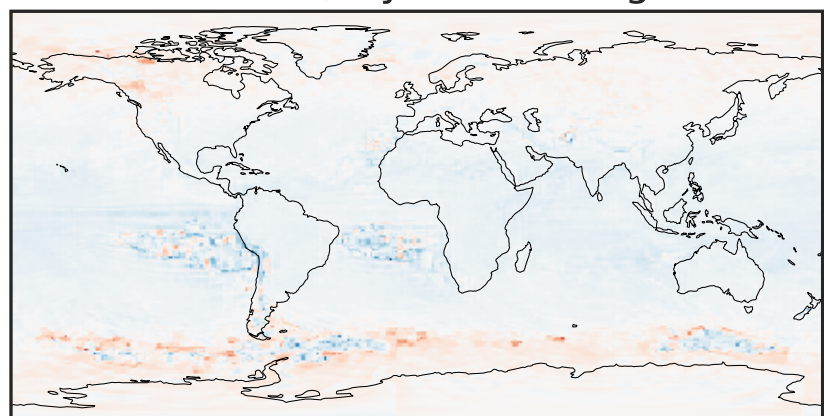
-4 0 4
kg s-1 m-2 1e-26

Difference (1x1.25)
Dev - Ref, Restricted Range [5%,95%]



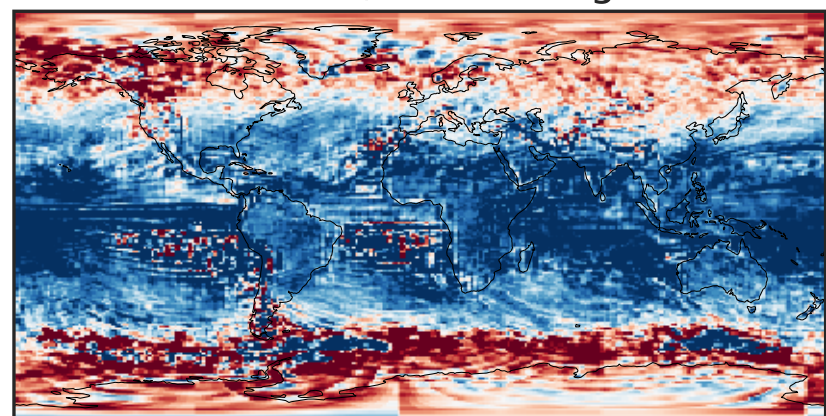
-1.5 0.0 1.5
kg s-1 m-2 1e-26

Ratio (1x1.25)
Dev/Ref, Dynamic Range



unitless

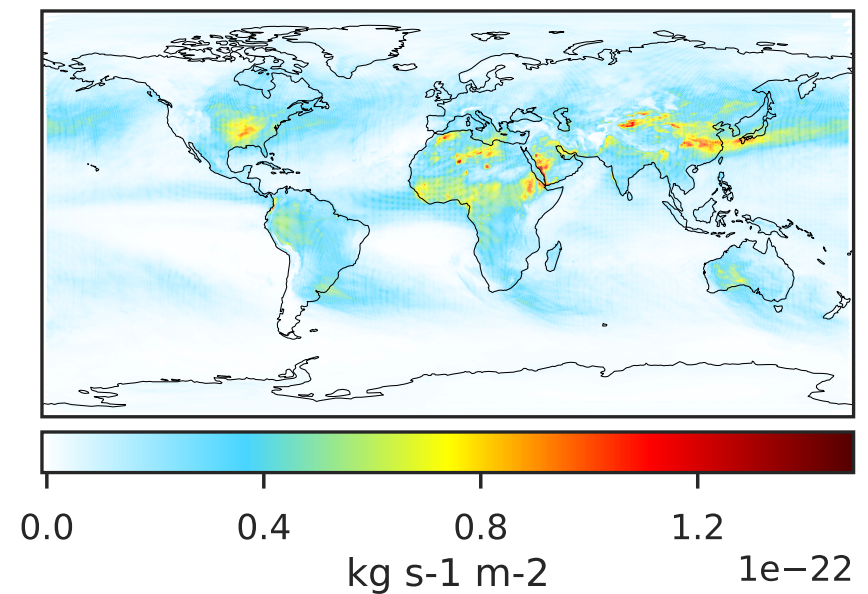
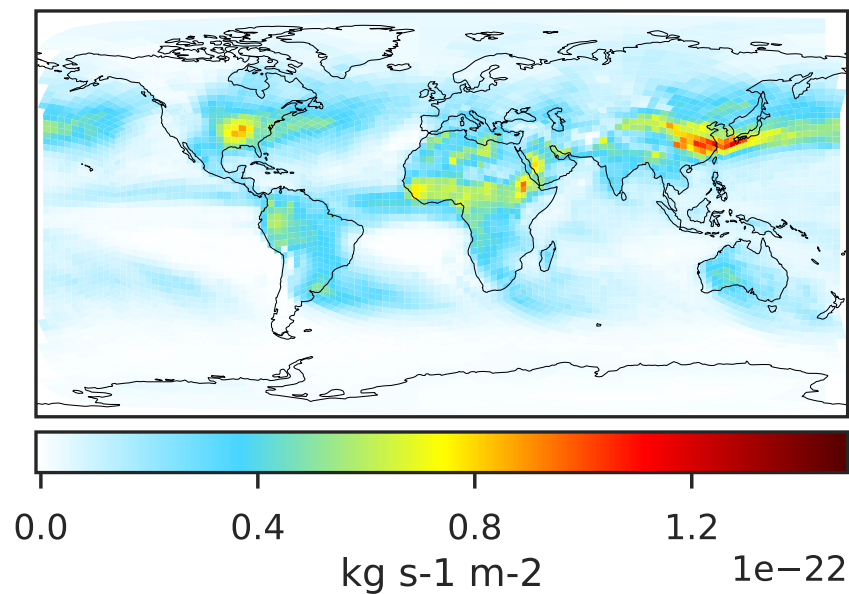
Ratio (1x1.25)
Dev/Ref, Fixed Range



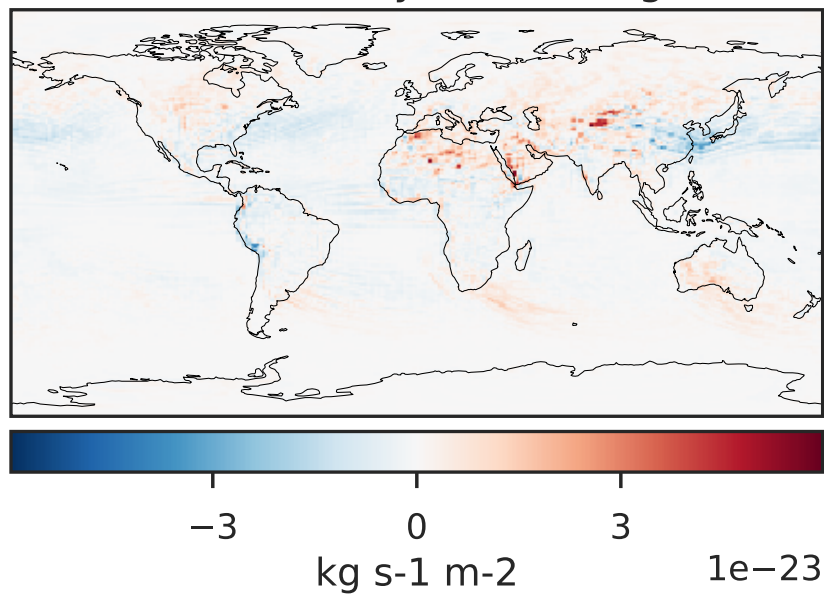
0.50 0.75 1.00 1.50 2.00
unitless

WetLossLS_Pb210 (AnnualMean)

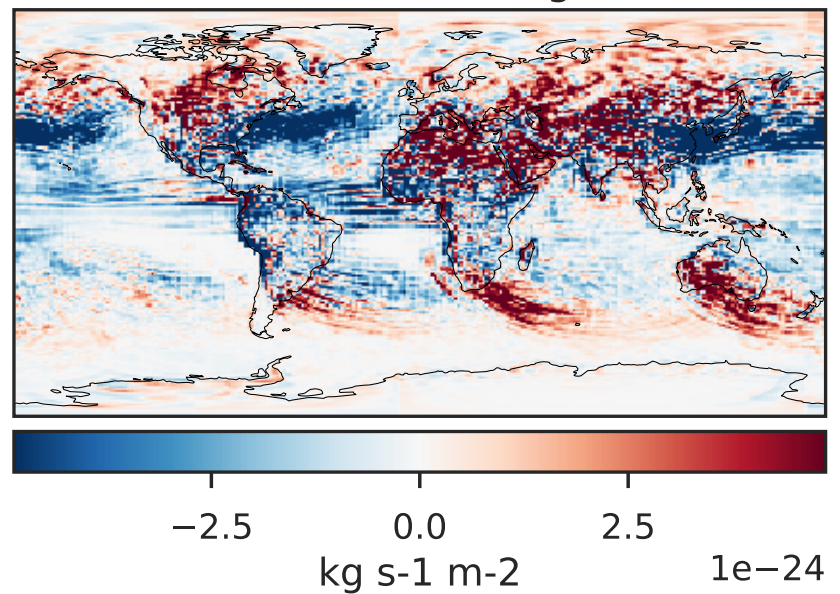
GCHP 14.2.2 using wind (c30) (Ref), Normalized by Area c30 GCHP 14.2.2 using wind (c180) (Dev), Normalized by Area c180



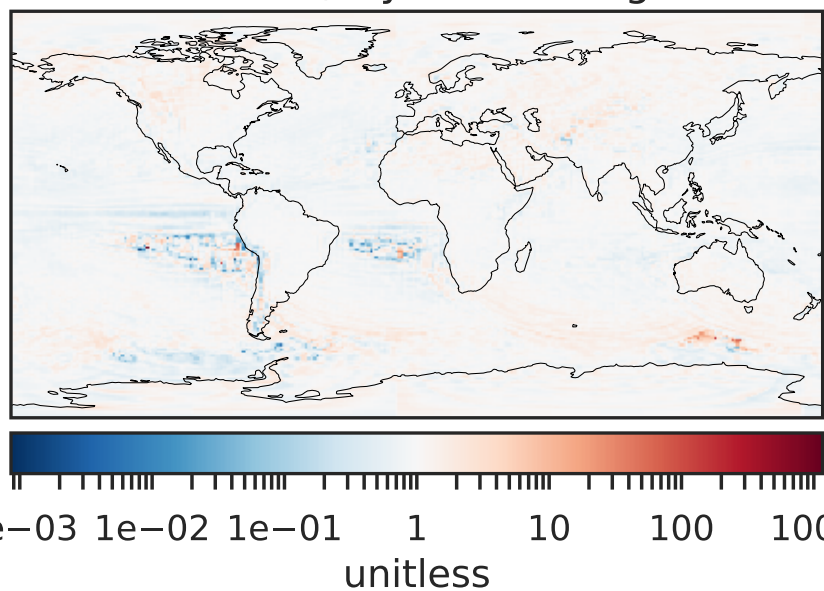
Difference (1x1.25)
Dev - Ref, Dynamic Range



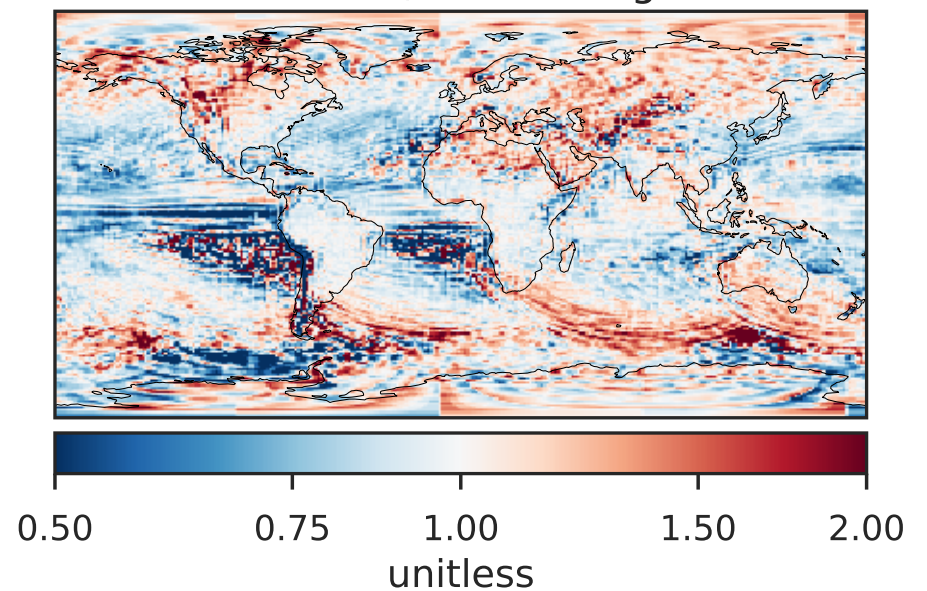
Difference (1x1.25)
Dev - Ref, Restricted Range [5%,95%]



Ratio (1x1.25)
Dev/Ref, Dynamic Range

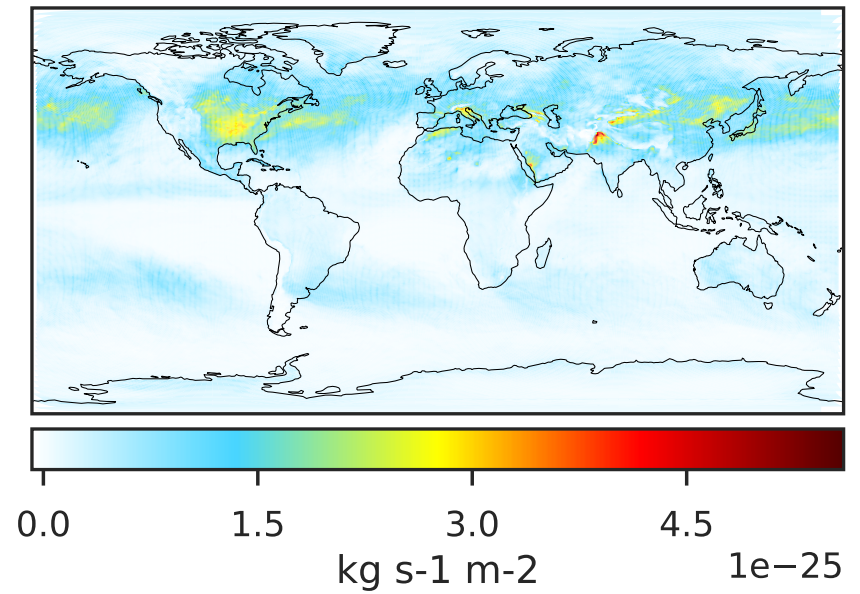
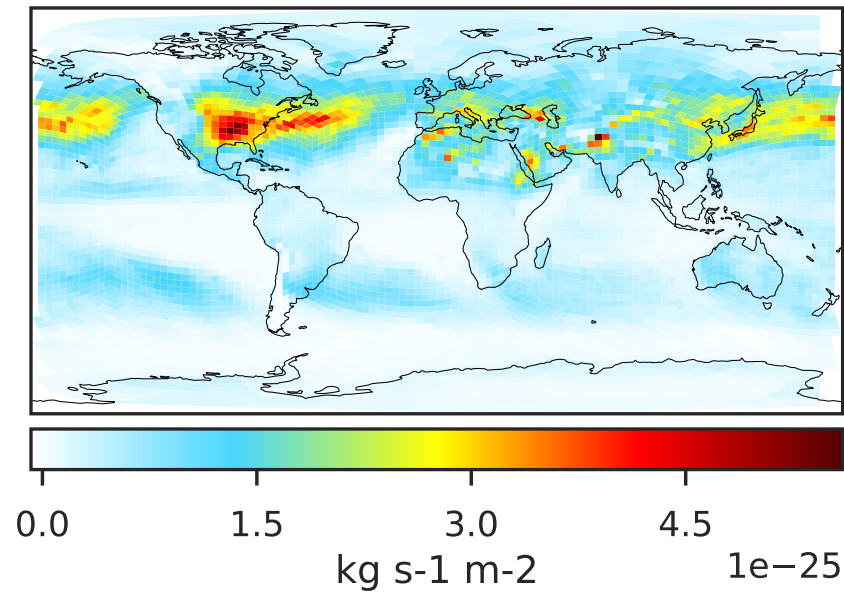


Ratio (1x1.25)
Dev/Ref, Fixed Range

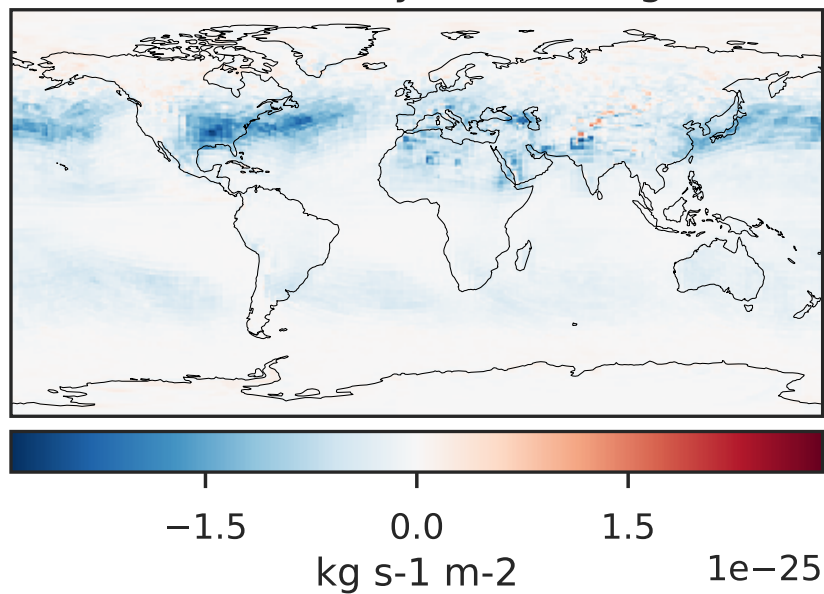


WetLossLS_Pb210s (AnnualMean)

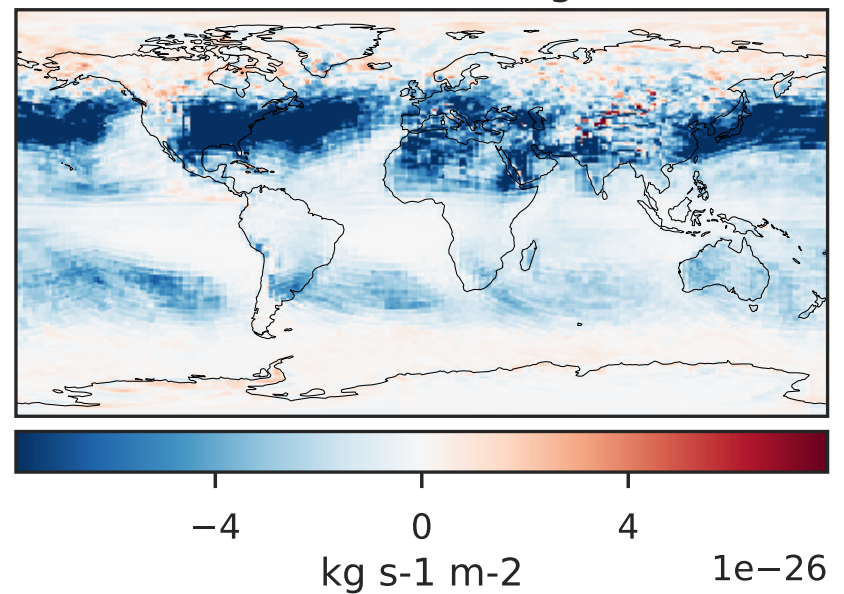
GCHP 14.2.2 using wind (c30) (Ref), Normalized by Area c30 GCHP 14.2.2 using wind (c180) (Dev), Normalized by Area c180



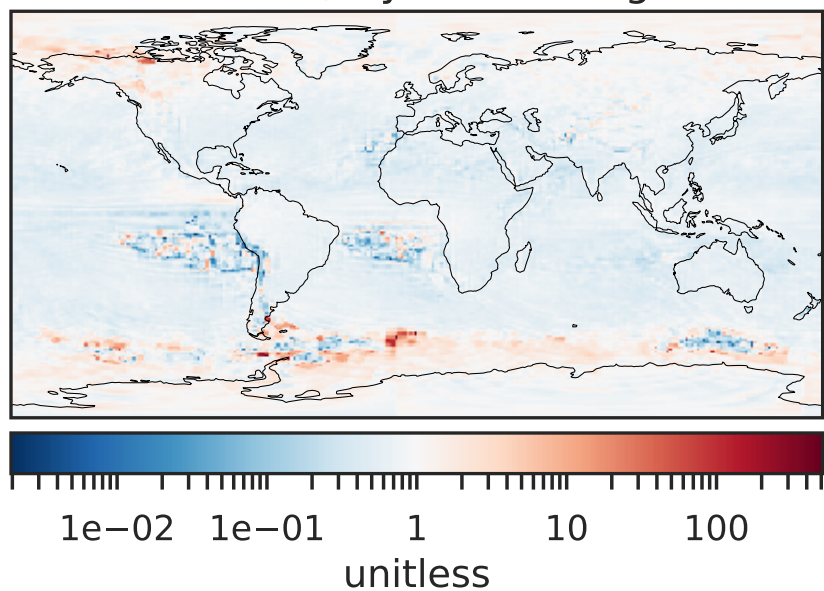
Difference (1x1.25)
Dev - Ref, Dynamic Range



Difference (1x1.25)
Dev - Ref, Restricted Range [5%,95%]



Ratio (1x1.25)
Dev/Ref, Dynamic Range



Ratio (1x1.25)
Dev/Ref, Fixed Range

