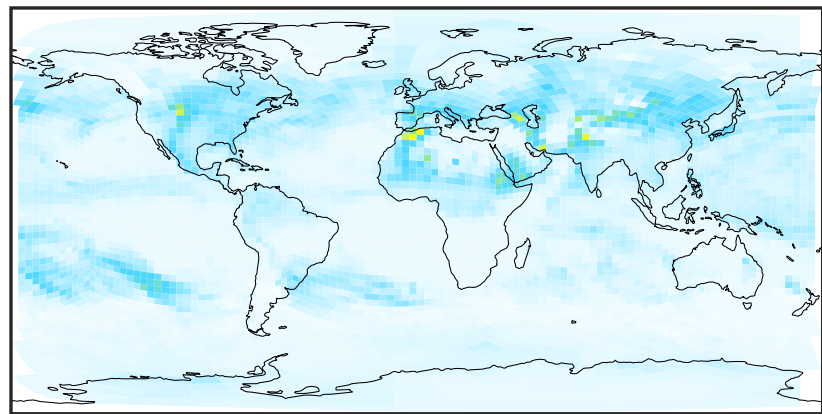
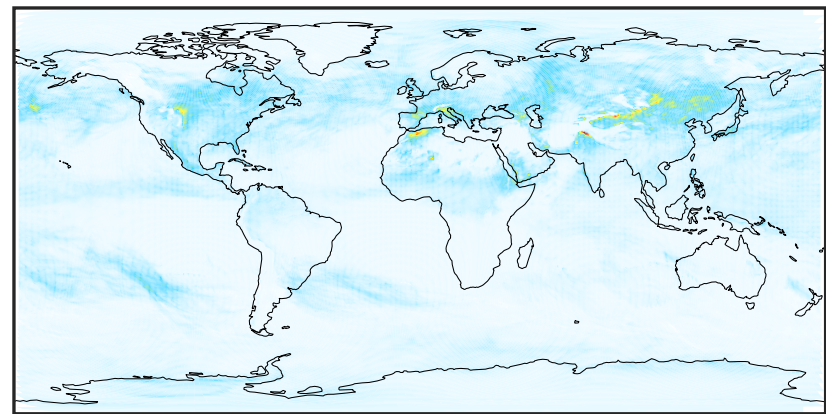


WetLossLS_Be10 (Jul2019)

GCHP 14.2.2 using wind (c30) (Ref), Normalized by Area c30 GCHP 14.2.2 using wind (c180) (Dev), Normalized by Area c180

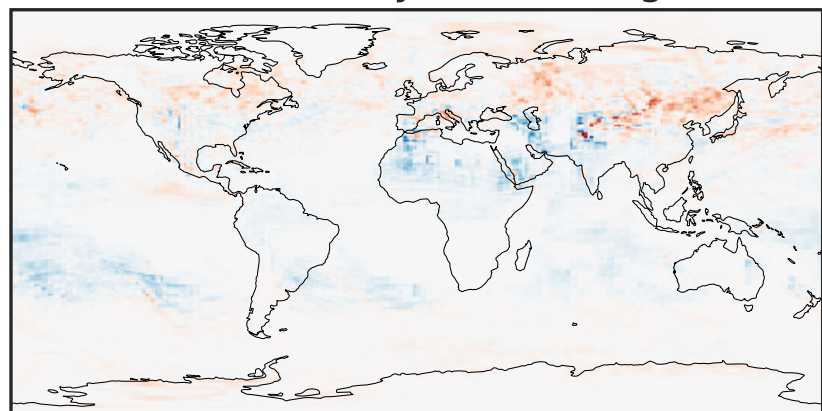


0 3 6 9 10^{-24}
 $\text{kg s}^{-1} \text{m}^{-2}$



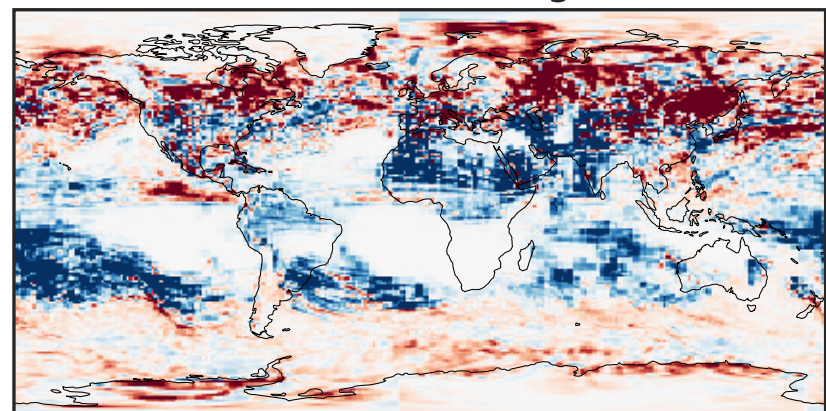
0 3 6 9 10^{-24}
 $\text{kg s}^{-1} \text{m}^{-2}$

Difference (1x1.25)
Dev - Ref, Dynamic Range



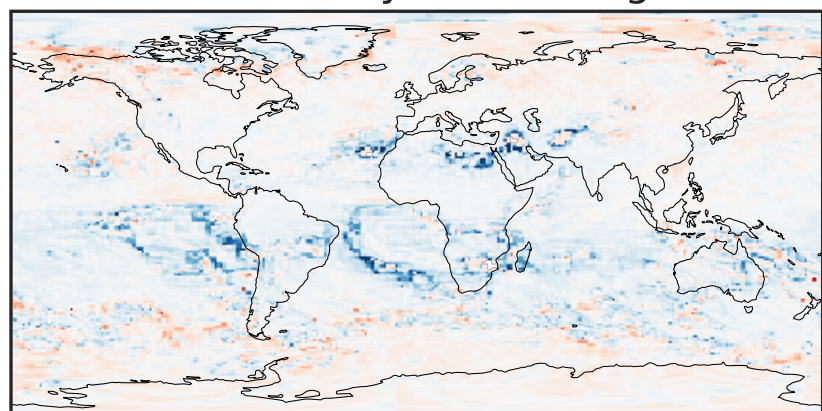
-2 0 2 10^{-24}
 $\text{kg s}^{-1} \text{m}^{-2}$

Difference (1x1.25)
Dev - Ref, Restricted Range [5%,95%]



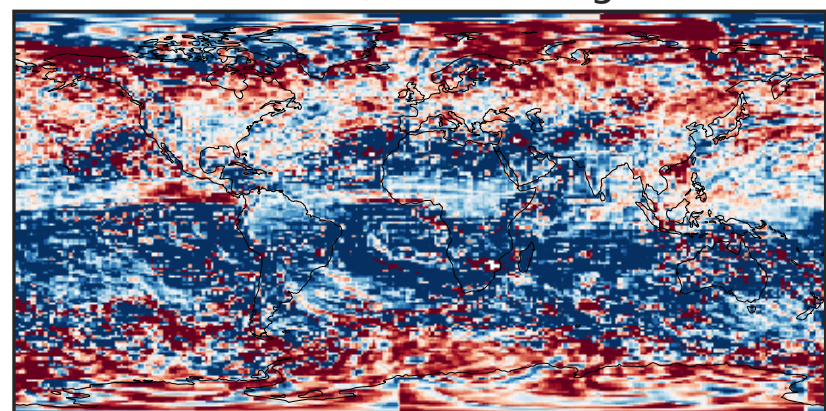
-2 0 2 10^{-25}
 $\text{kg s}^{-1} \text{m}^{-2}$

Ratio (1x1.25)
Dev/Ref, Dynamic Range



unitless

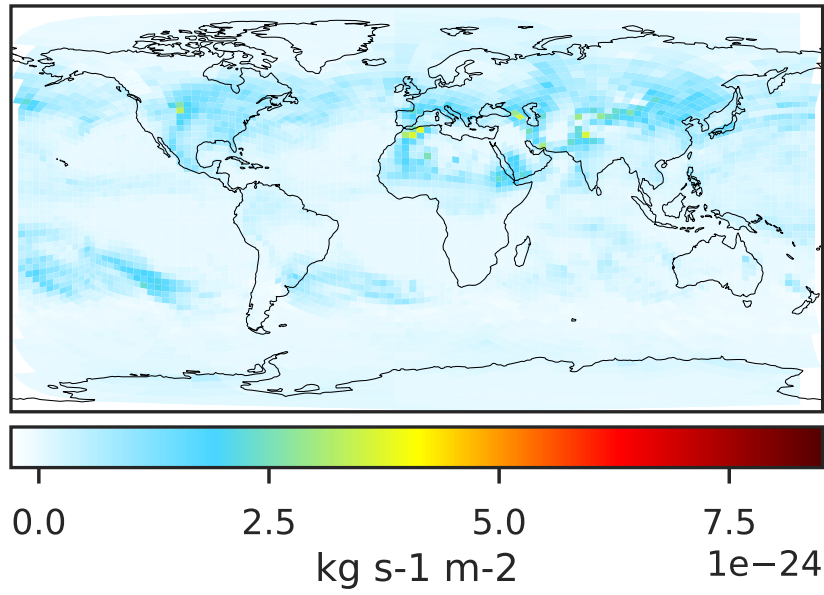
Ratio (1x1.25)
Dev/Ref, Fixed Range



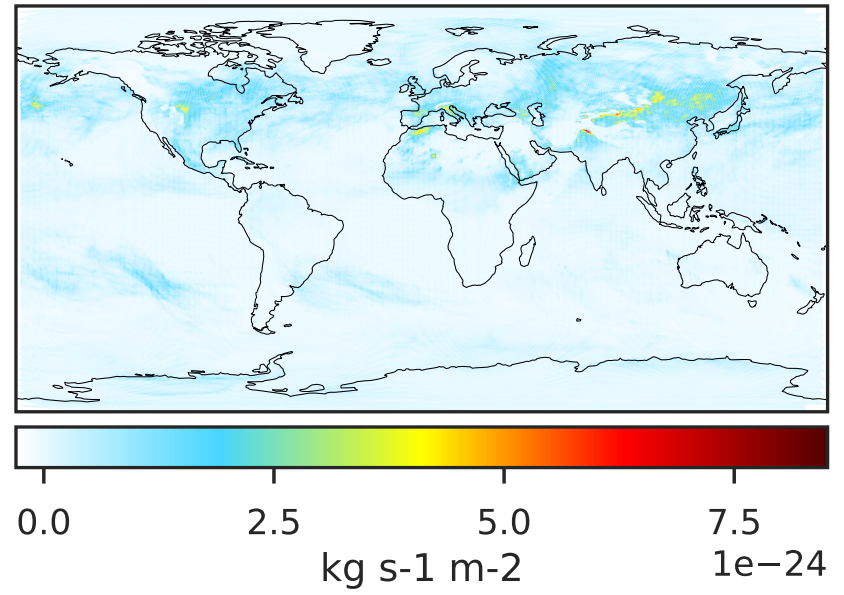
0.50 0.75 1.00 1.50 2.00
unitless

WetLossLS_Be10s (Jul2019)

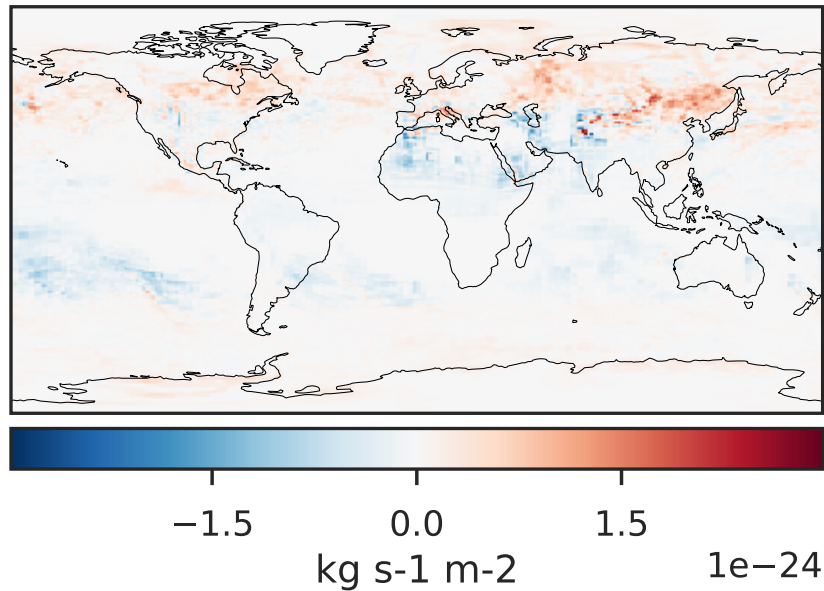
GCHP 14.2.2 using wind (c30) (Ref), Normalized by Area c30



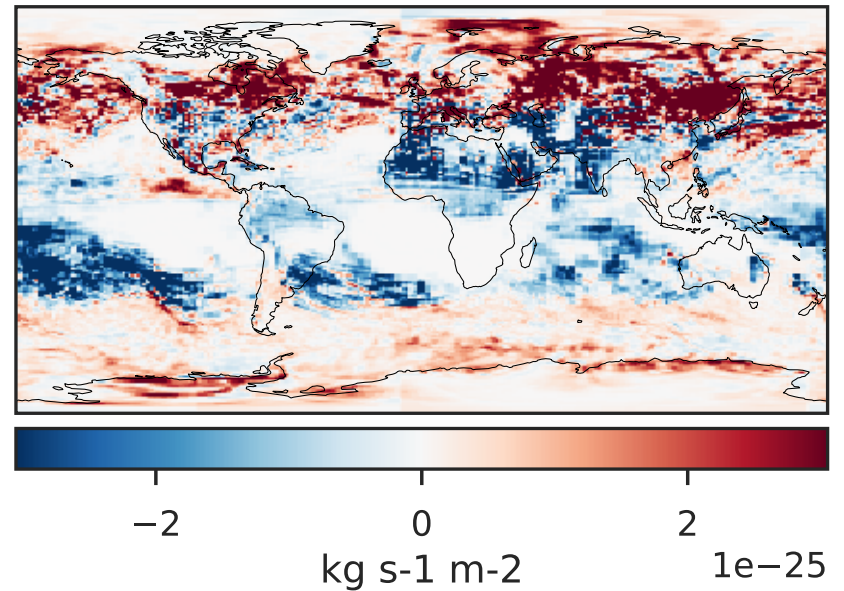
GCHP 14.2.2 using wind (c180) (Dev), Normalized by Area c180



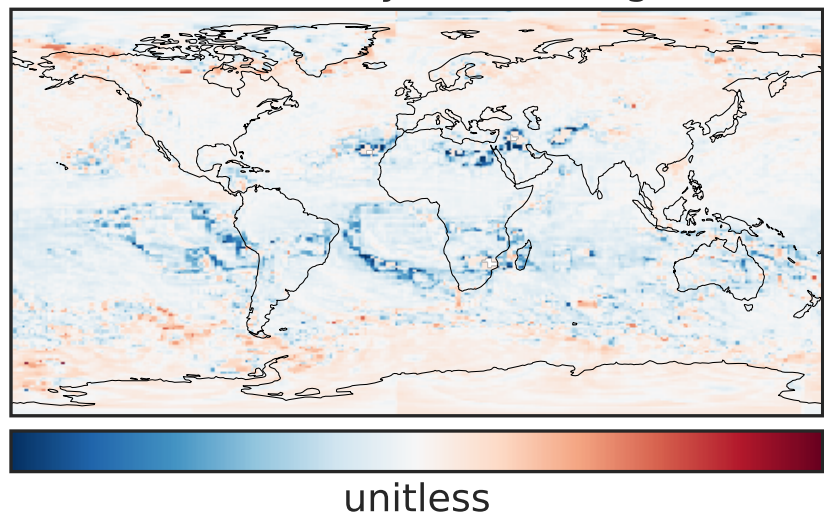
Difference (1x1.25)
Dev - Ref, Dynamic Range



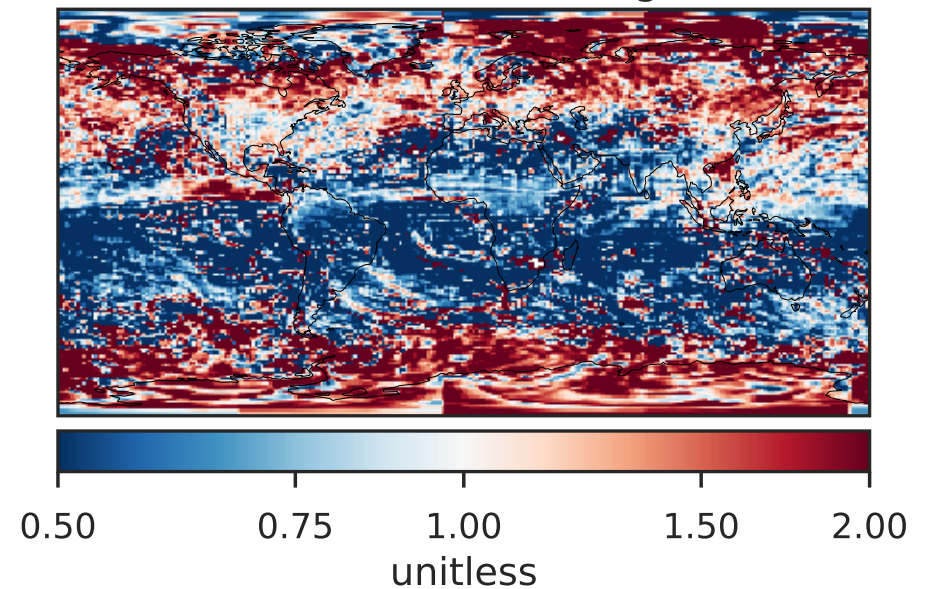
Difference (1x1.25)
Dev - Ref, Restricted Range [5%,95%]



Ratio (1x1.25)
Dev/Ref, Dynamic Range

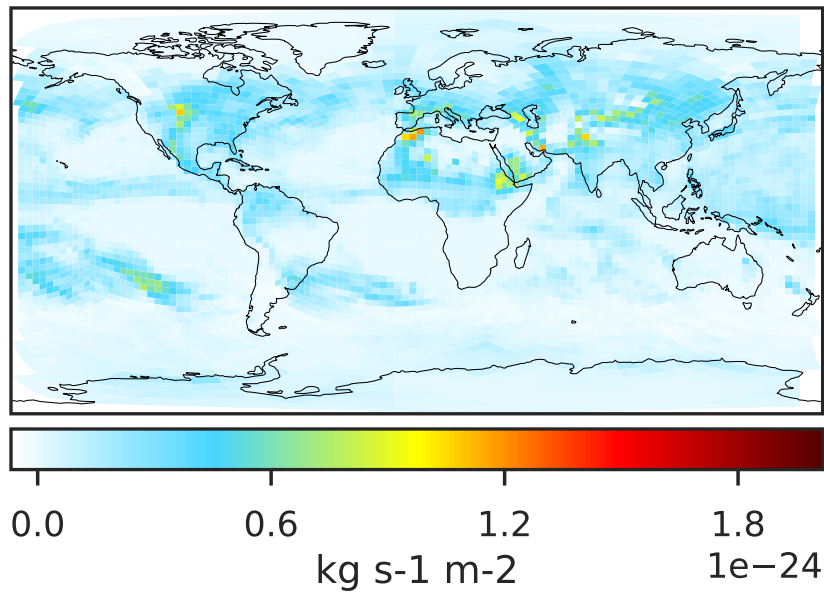


Ratio (1x1.25)
Dev/Ref, Fixed Range

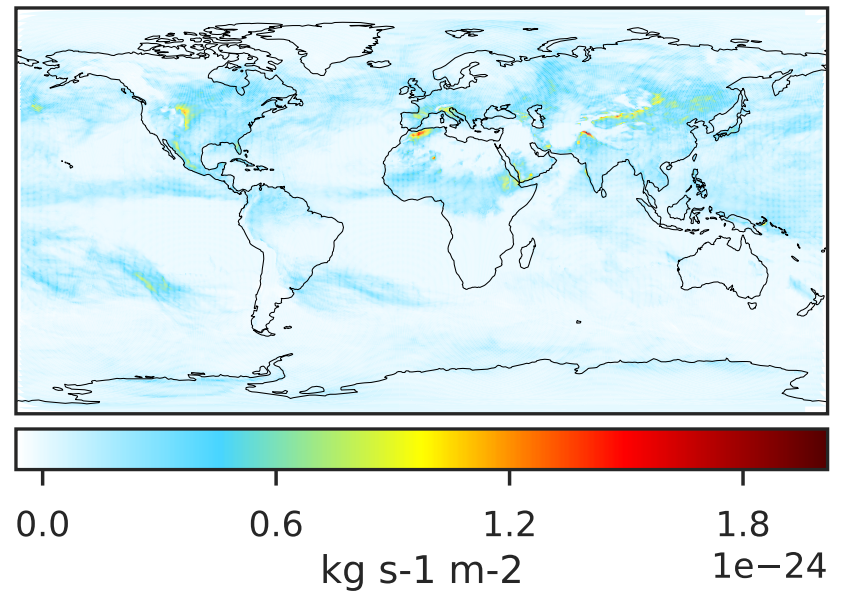


WetLossLS_Be7 (Jul2019)

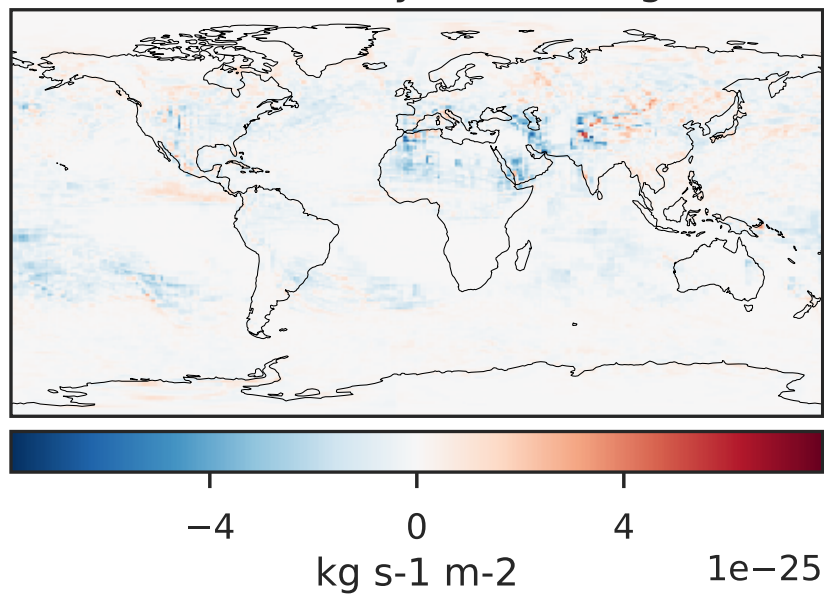
GCHP 14.2.2 using wind (c30) (Ref), Normalized by Area c30



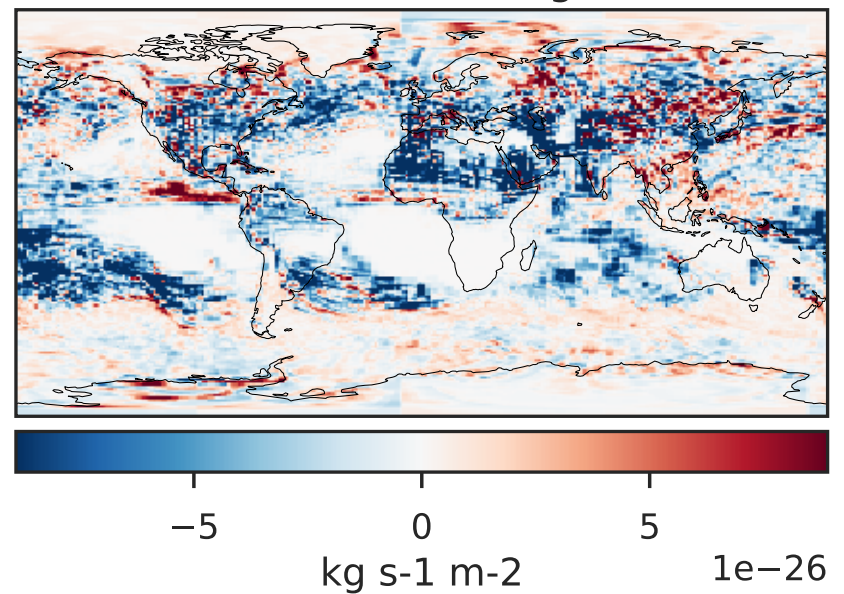
GCHP 14.2.2 using wind (c180) (Dev), Normalized by Area c180



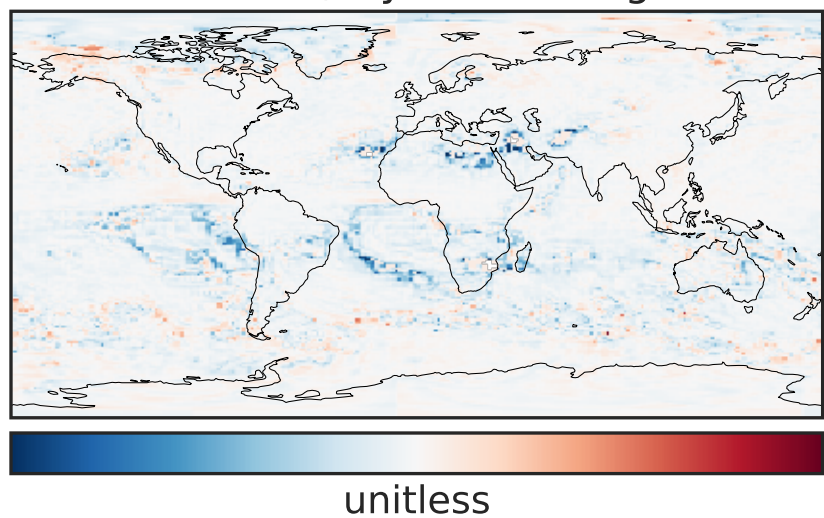
Difference (1x1.25)
Dev - Ref, Dynamic Range



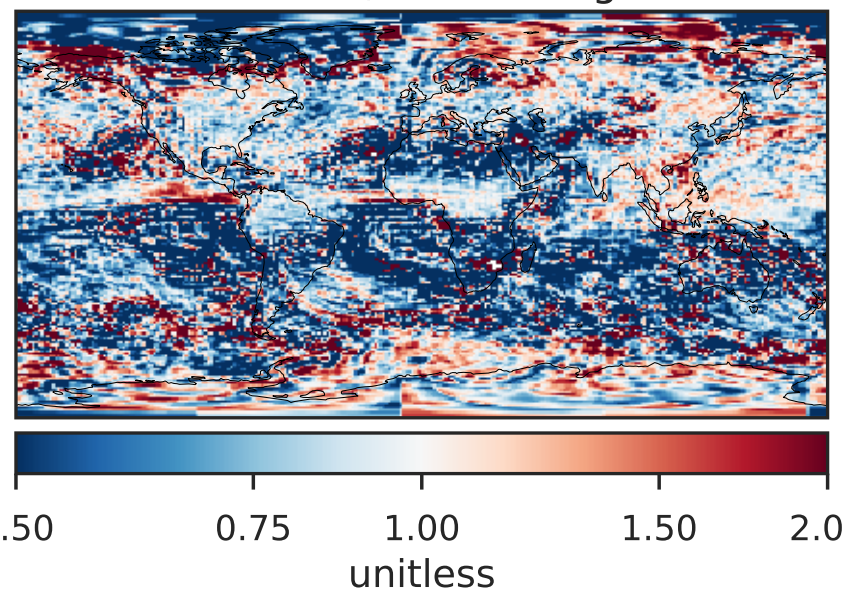
Difference (1x1.25)
Dev - Ref, Restricted Range [5%,95%]



Ratio (1x1.25)
Dev/Ref, Dynamic Range

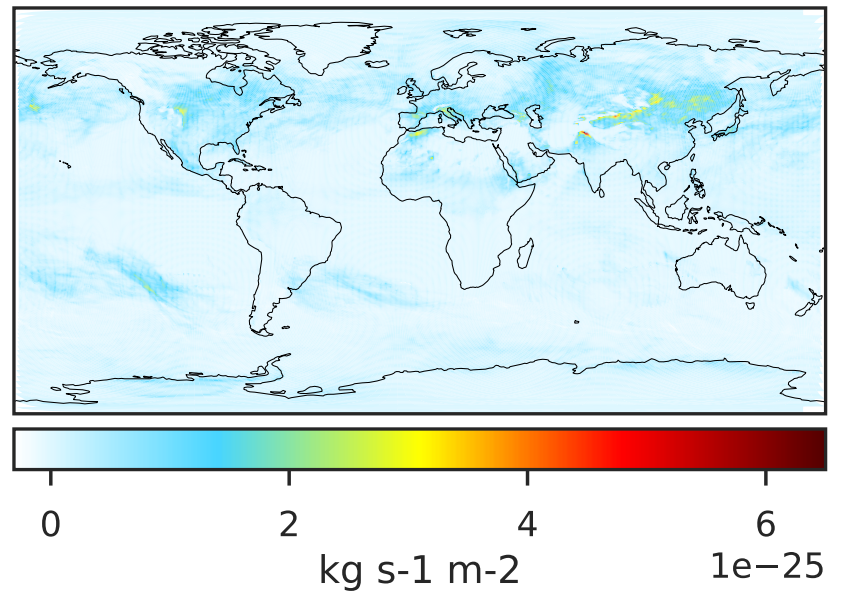
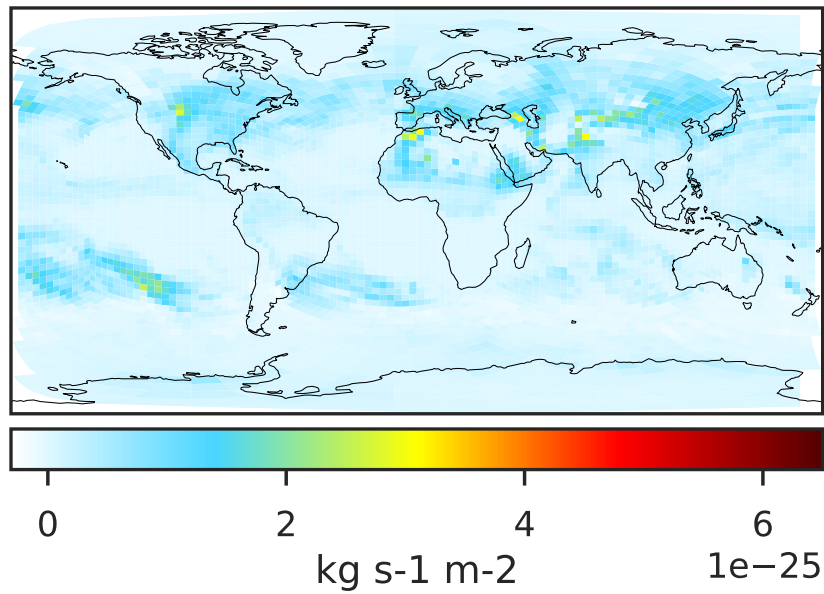


Ratio (1x1.25)
Dev/Ref, Fixed Range

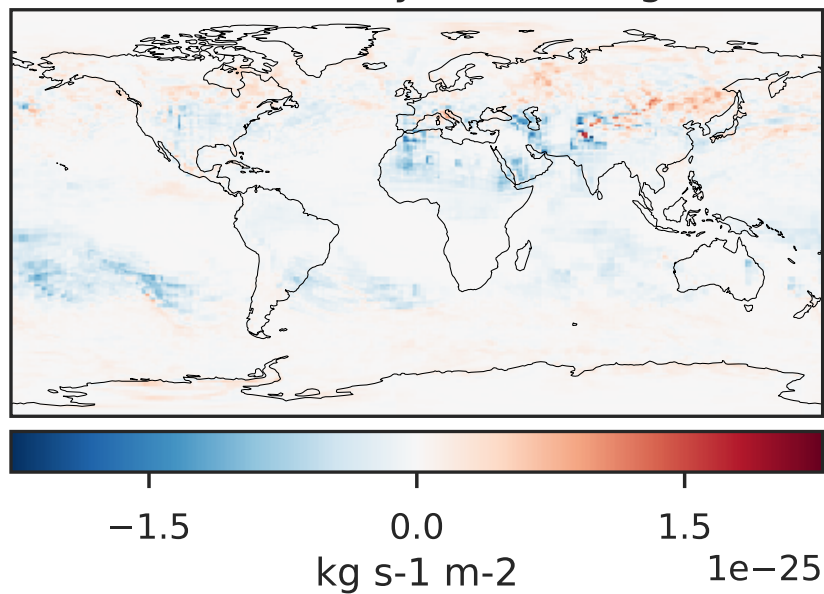


WetLossLS_Be7s (Jul2019)

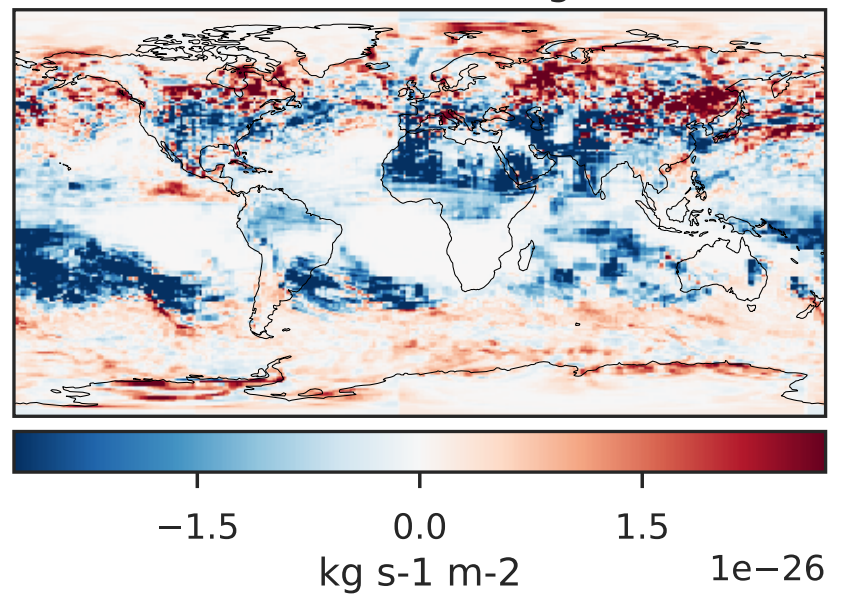
GCHP 14.2.2 using wind (c30) (Ref), Normalized by Area c30 GCHP 14.2.2 using wind (c180) (Dev), Normalized by Area c180



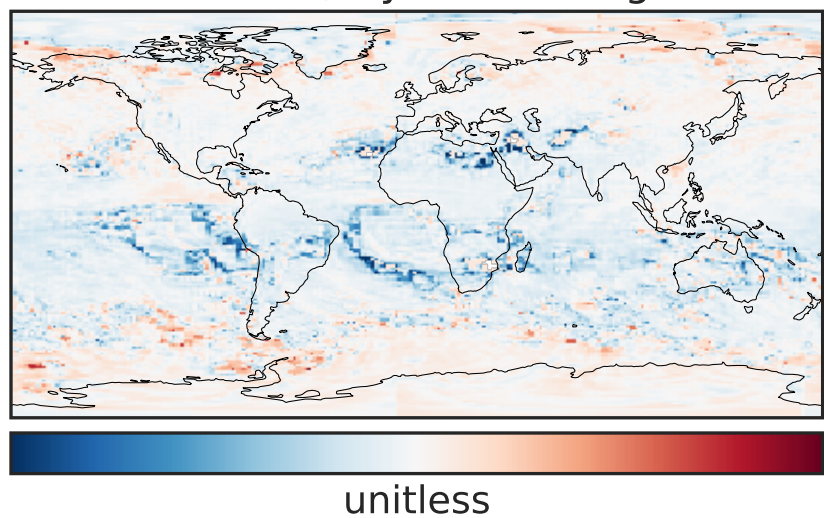
Difference (1x1.25)
Dev - Ref, Dynamic Range



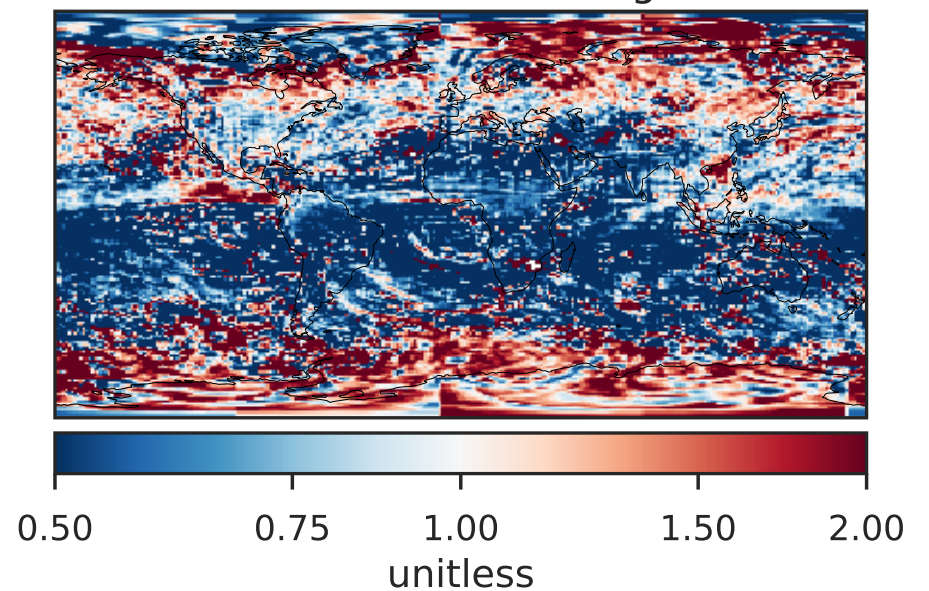
Difference (1x1.25)
Dev - Ref, Restricted Range [5%,95%]



Ratio (1x1.25)
Dev/Ref, Dynamic Range

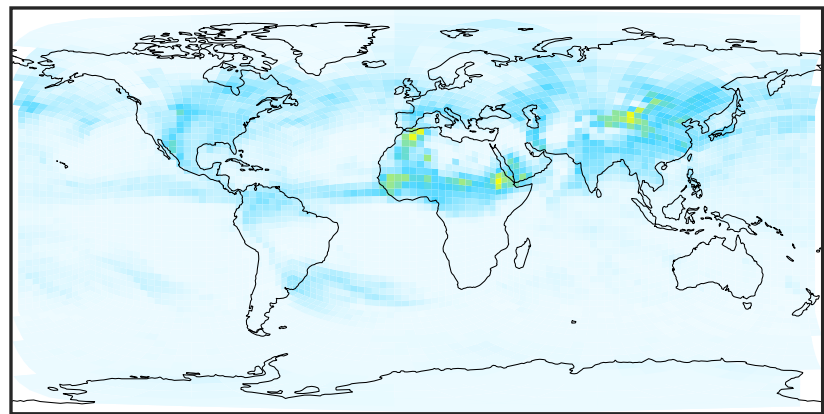


Ratio (1x1.25)
Dev/Ref, Fixed Range

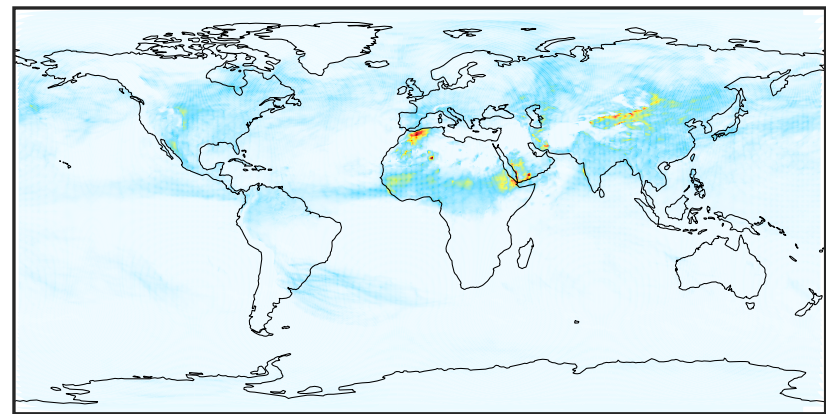


WetLossLS_Pb210 (Jul2019)

GCHP 14.2.2 using wind (c30) (Ref), Normalized by Area c30 GCHP 14.2.2 using wind (c180) (Dev), Normalized by Area c180

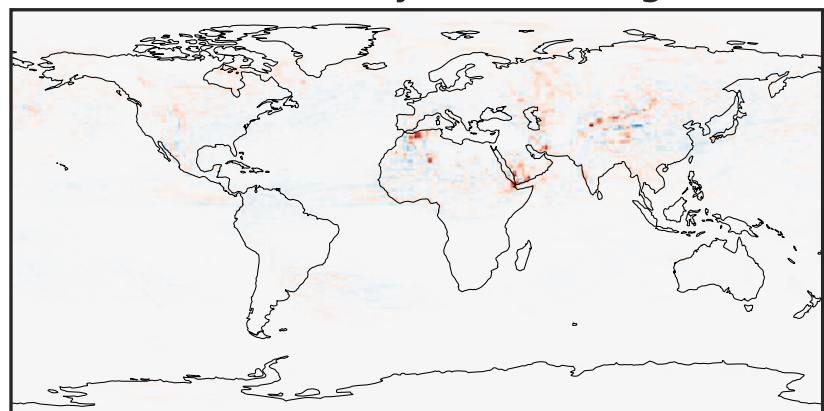


0.0 1.5 3.0 4.5
 $\text{kg s}^{-1} \text{m}^{-2} \quad 1\text{e}-22$



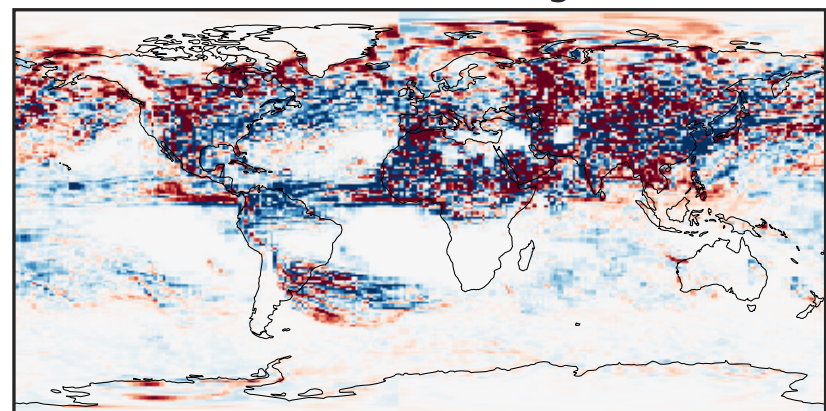
0.0 1.5 3.0 4.5
 $\text{kg s}^{-1} \text{m}^{-2} \quad 1\text{e}-22$

Difference (1x1.25)
Dev - Ref, Dynamic Range



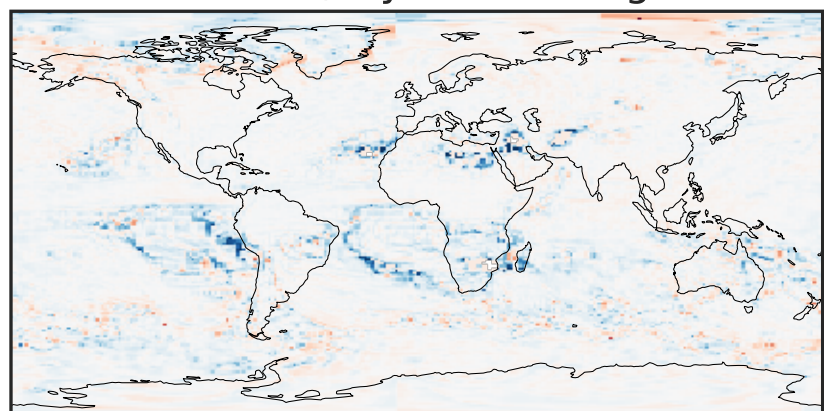
-1.5 0.0 1.5
 $\text{kg s}^{-1} \text{m}^{-2} \quad 1\text{e}-22$

Difference (1x1.25)
Dev - Ref, Restricted Range [5%,95%]



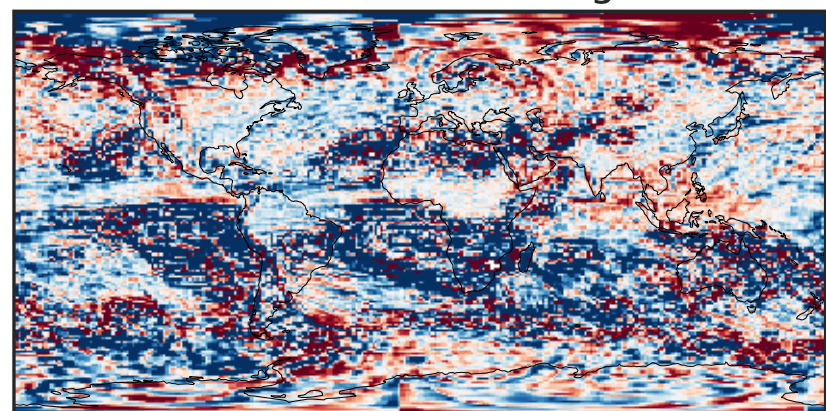
-6 0 6
 $\text{kg s}^{-1} \text{m}^{-2} \quad 1\text{e}-24$

Ratio (1x1.25)
Dev/Ref, Dynamic Range



unitless

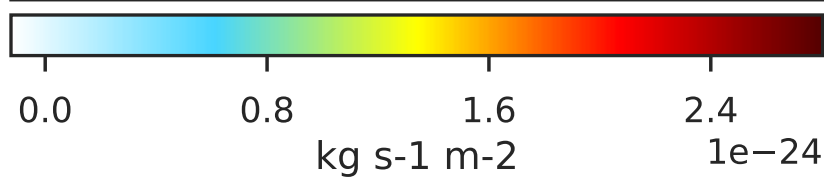
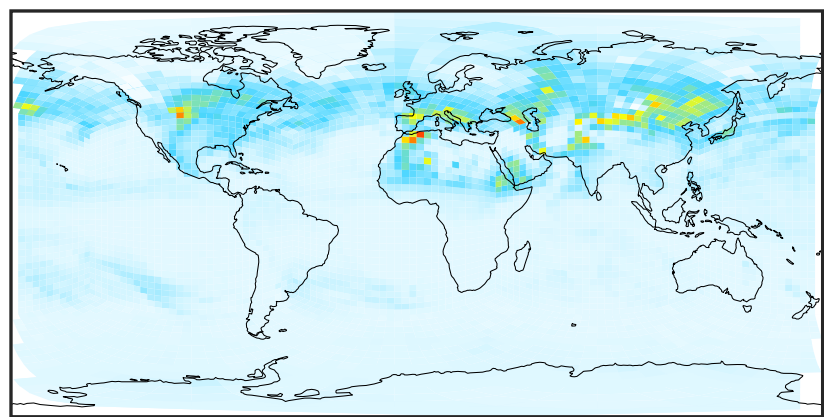
Ratio (1x1.25)
Dev/Ref, Fixed Range



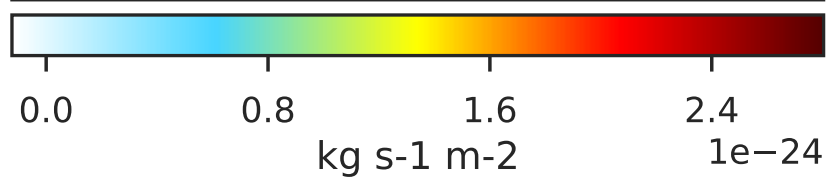
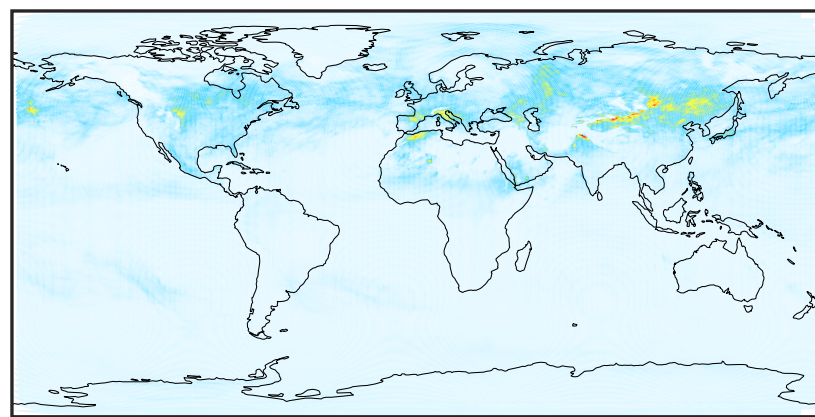
0.50 0.75 1.00 1.50 2.00
unitless

WetLossLS_Pb210s (Jul2019)

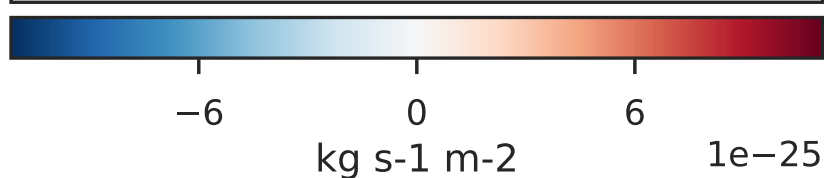
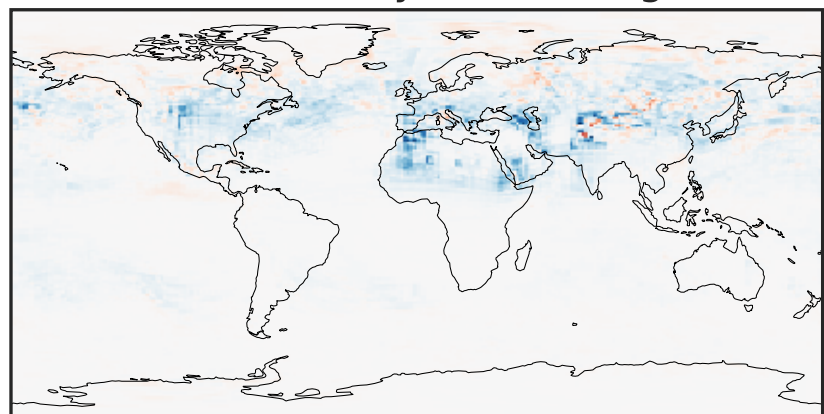
GCHP 14.2.2 using wind (c30) (Ref), Normalized by Area c30



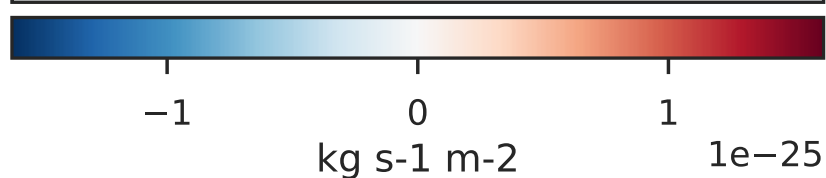
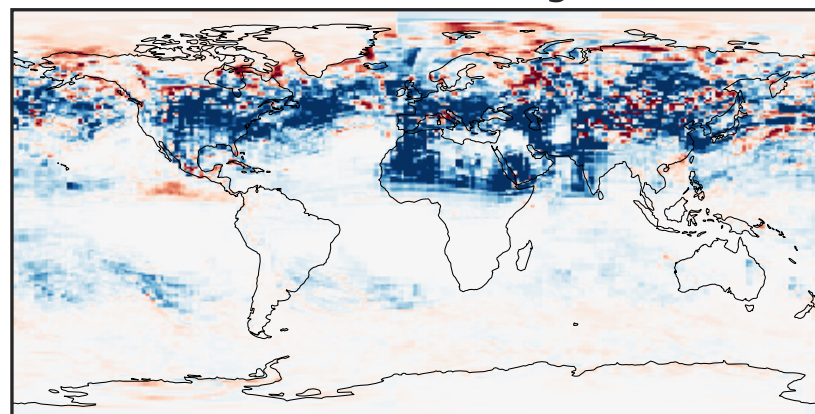
GCHP 14.2.2 using wind (c180) (Dev), Normalized by Area c180



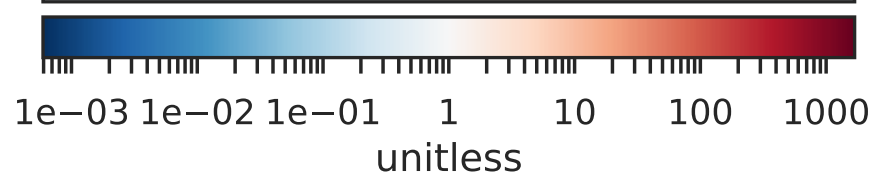
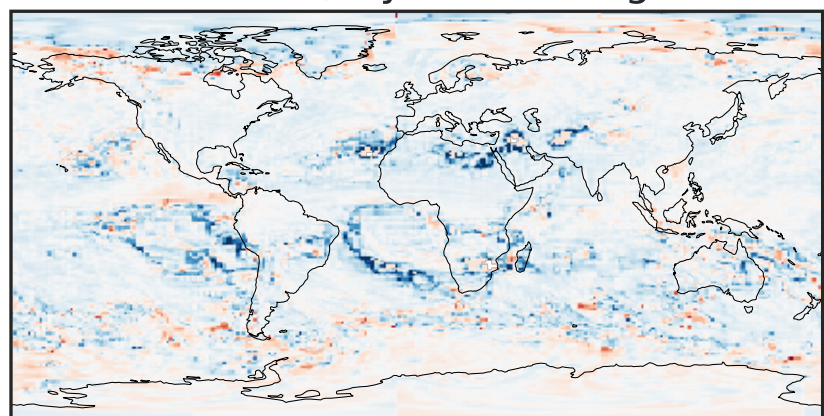
Difference (1x1.25)
Dev - Ref, Dynamic Range



Difference (1x1.25)
Dev - Ref, Restricted Range [5%,95%]



Ratio (1x1.25)
Dev/Ref, Dynamic Range



Ratio (1x1.25)
Dev/Ref, Fixed Range

