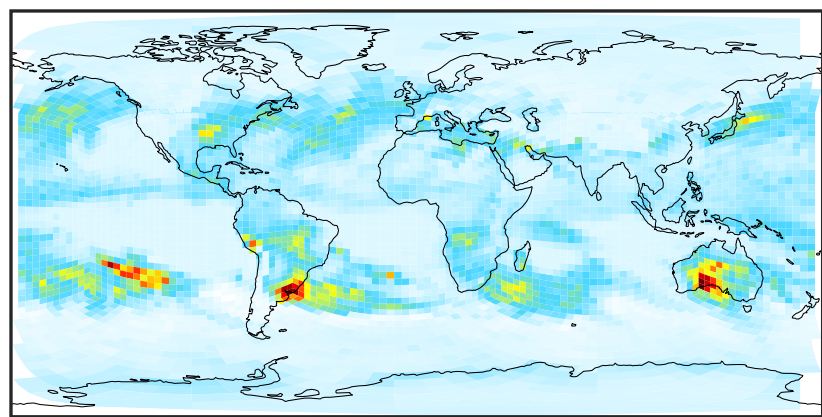
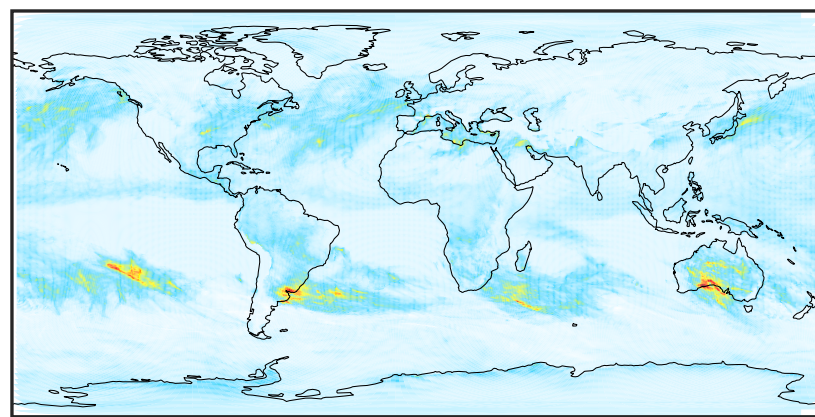


WetLossLS_Be10 (Oct2019)

GCHP 14.2.2 using wind (c30) (Ref), Normalized by Area c30 GCHP 14.2.2 using wind (c180) (Dev), Normalized by Area c180

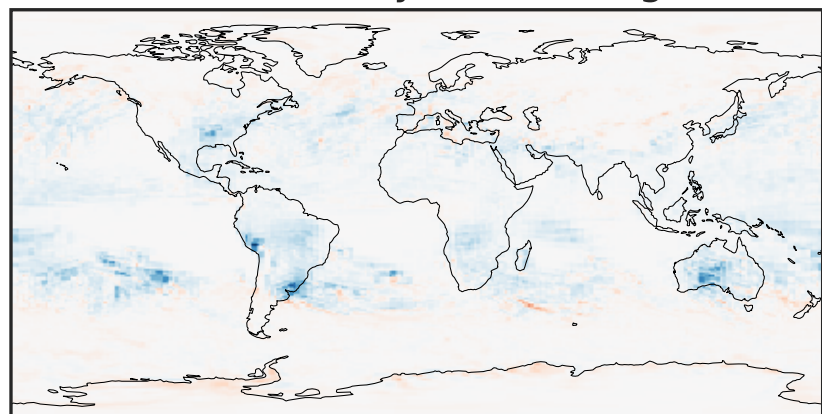


0.0 1.5 3.0 4.5
 $\text{kg s}^{-1} \text{m}^{-2} \times 10^{-24}$



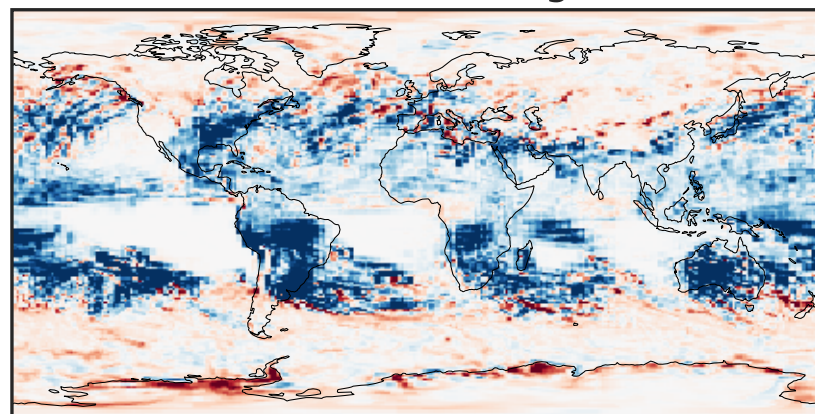
0.0 1.5 3.0 4.5
 $\text{kg s}^{-1} \text{m}^{-2} \times 10^{-24}$

Difference (1x1.25)
Dev - Ref, Dynamic Range



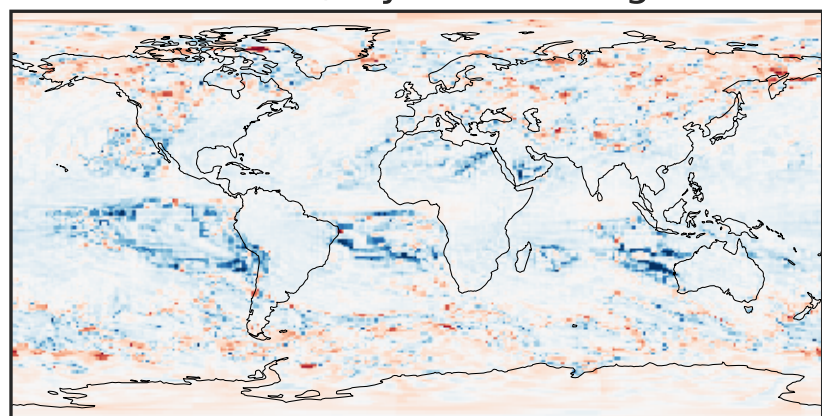
-2 0 2
 $\text{kg s}^{-1} \text{m}^{-2} \times 10^{-24}$

Difference (1x1.25)
Dev - Ref, Restricted Range [5%,95%]



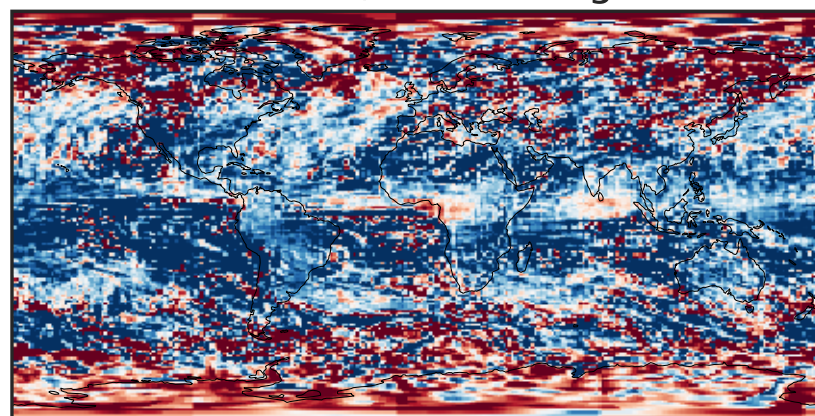
-2.5 0.0 2.5
 $\text{kg s}^{-1} \text{m}^{-2} \times 10^{-25}$

Ratio (1x1.25)
Dev/Ref, Dynamic Range



10^{-3} 10^{-2} 10^{-1} 1 10 100 1000
unitless

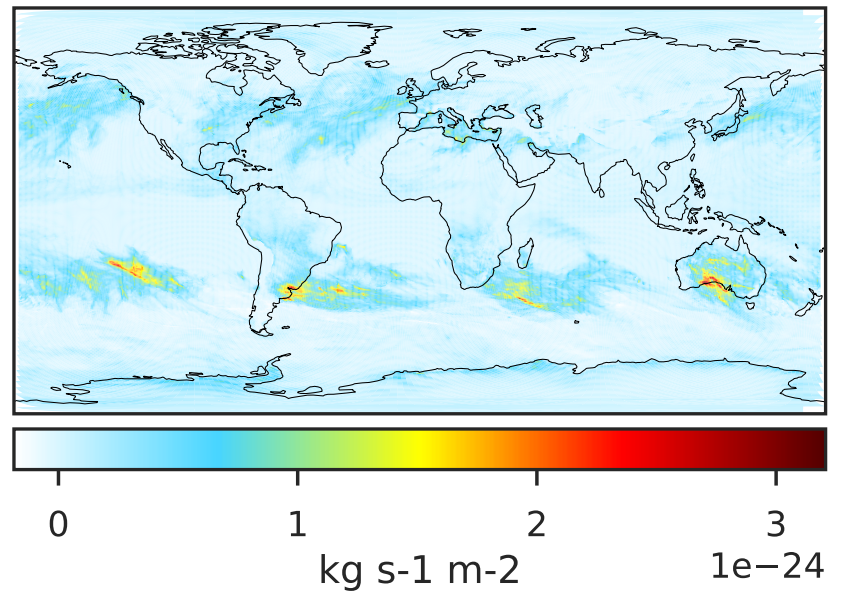
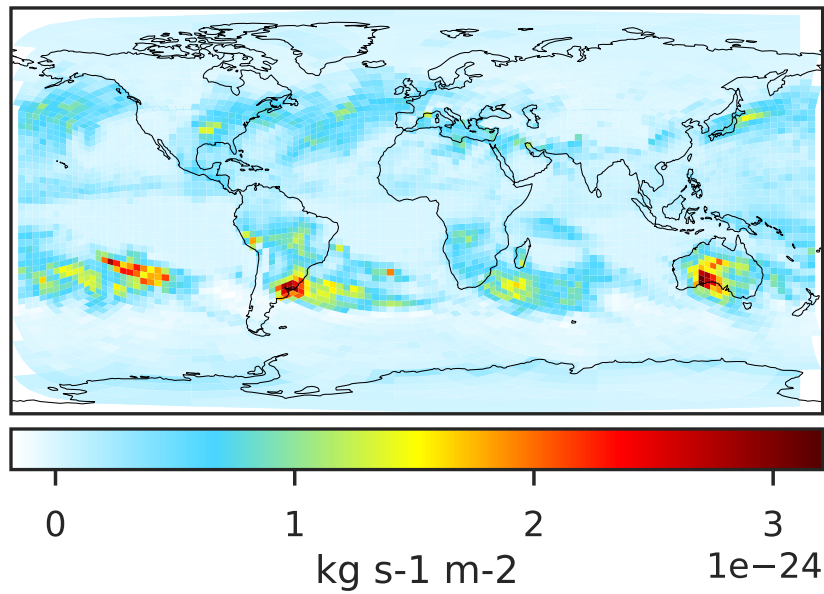
Ratio (1x1.25)
Dev/Ref, Fixed Range



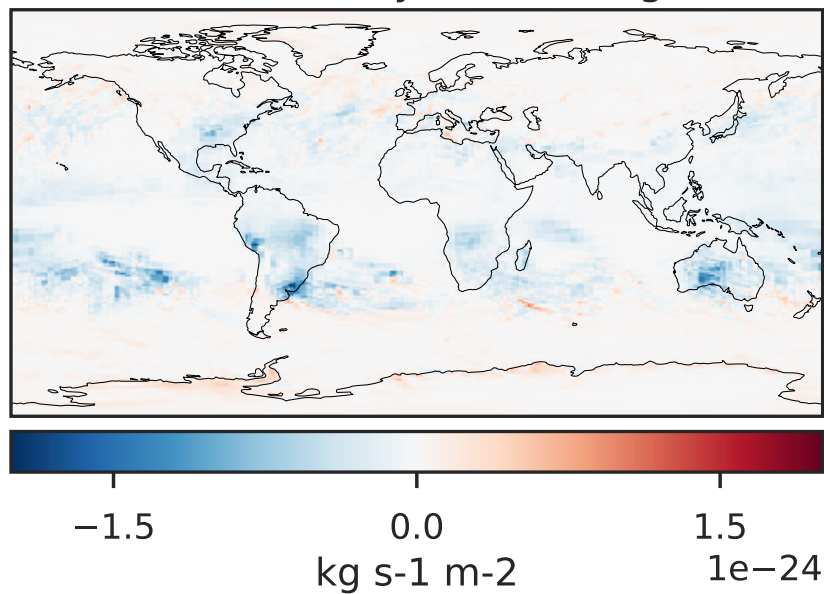
0.50 0.75 1.00 1.50 2.00
unitless

WetLossLS_Be10s (Oct2019)

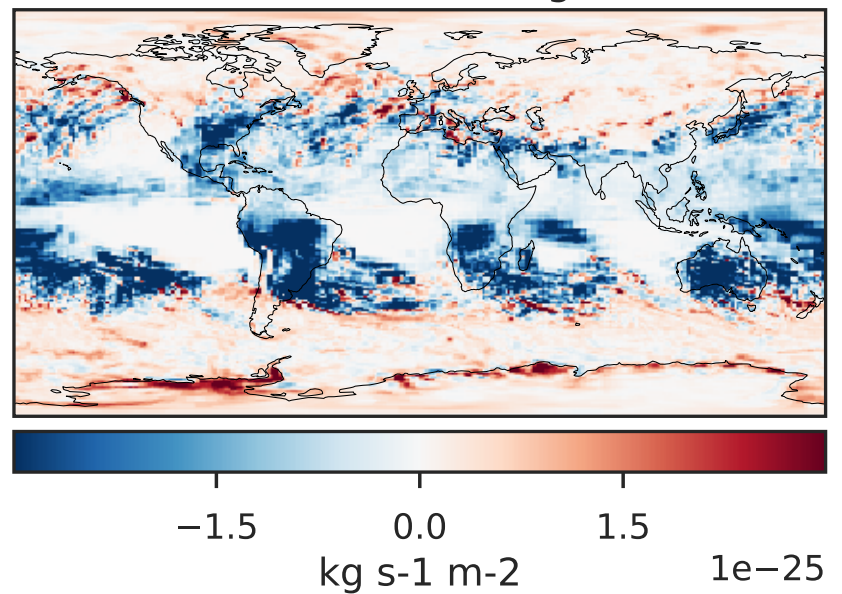
GCHP 14.2.2 using wind (c30) (Ref), Normalized by Area c30 GCHP 14.2.2 using wind (c180) (Dev), Normalized by Area c180



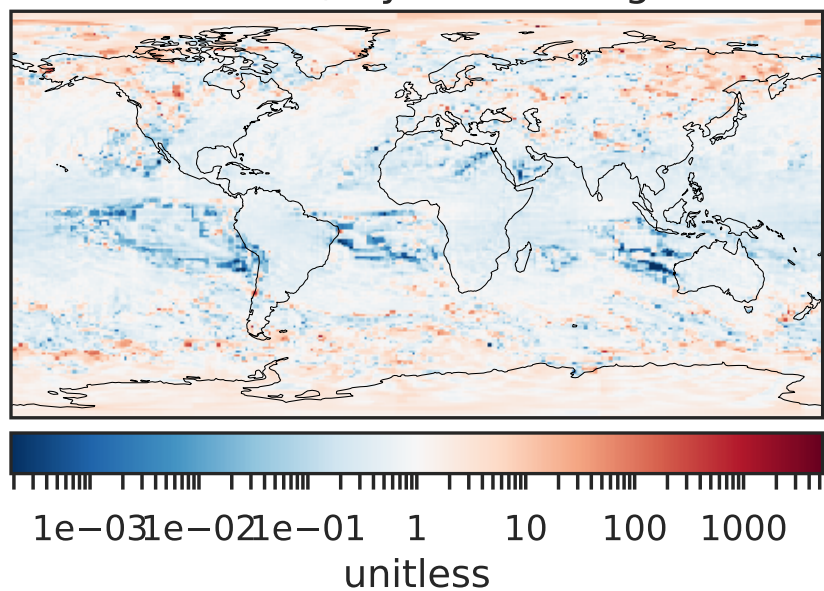
Difference (1x1.25)
Dev - Ref, Dynamic Range



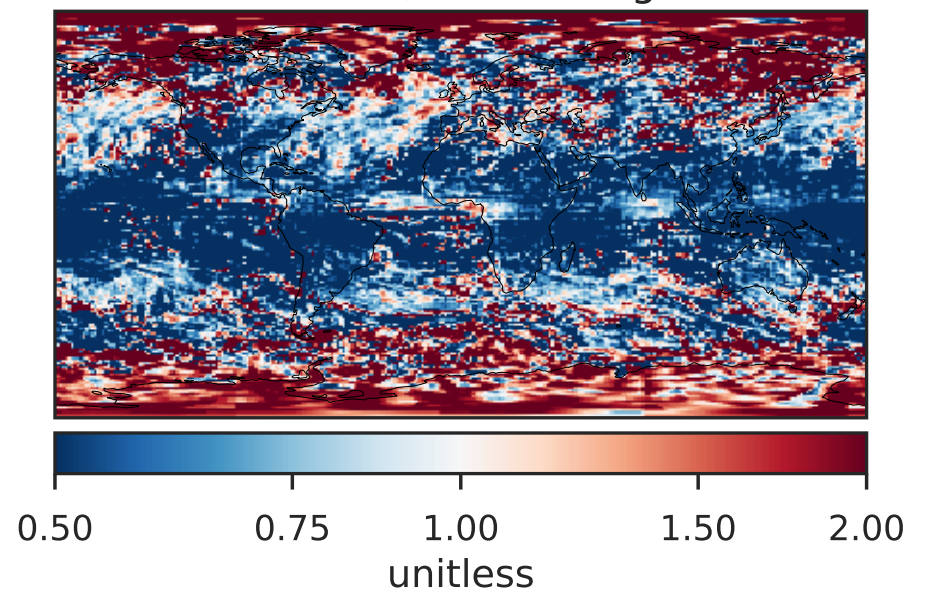
Difference (1x1.25)
Dev - Ref, Restricted Range [5%,95%]



Ratio (1x1.25)
Dev/Ref, Dynamic Range

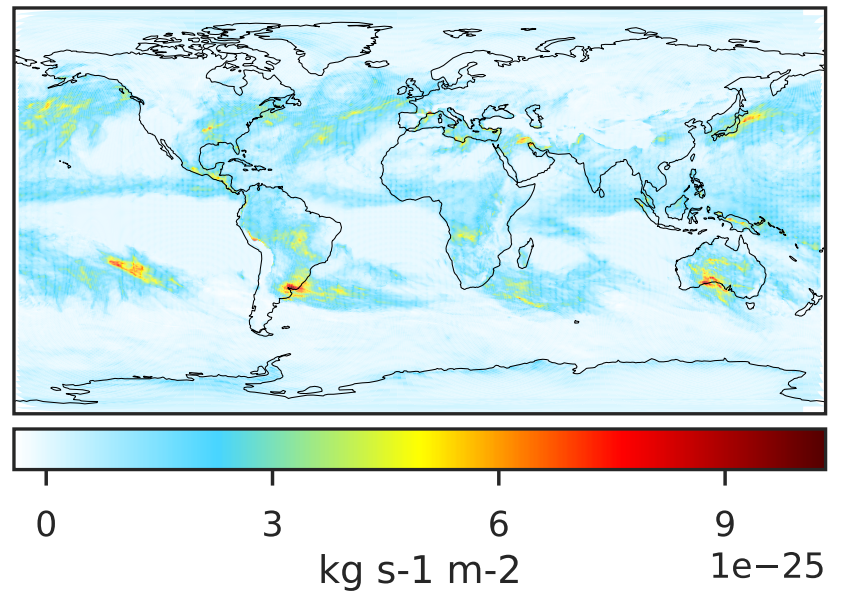
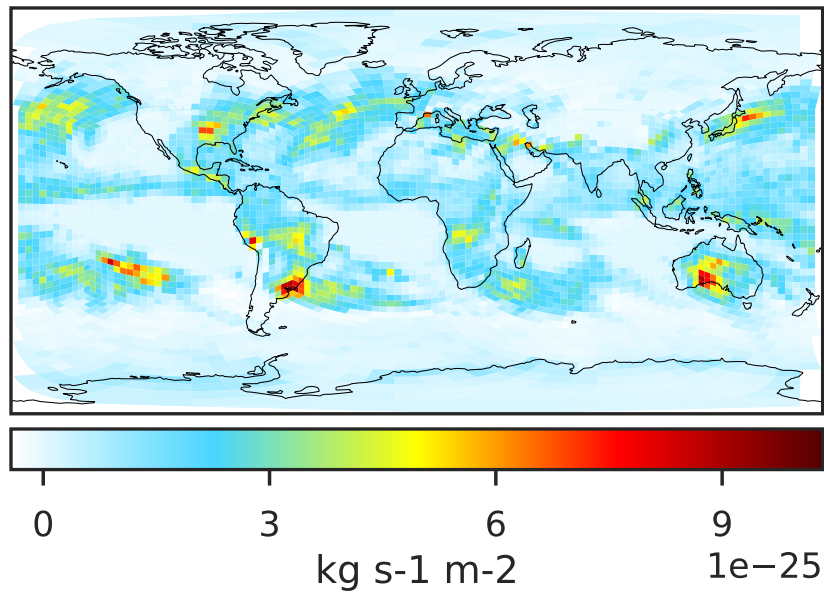


Ratio (1x1.25)
Dev/Ref, Fixed Range

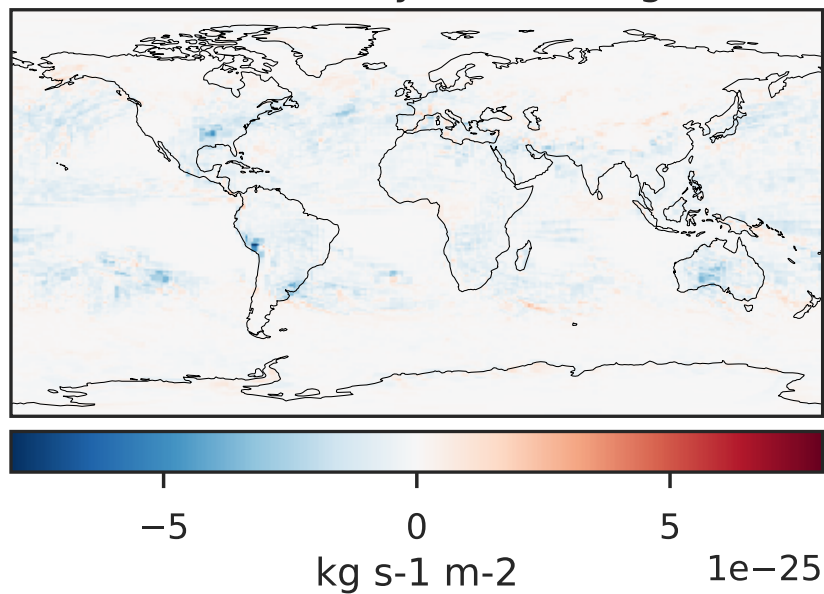


WetLossLS_Be7 (Oct2019)

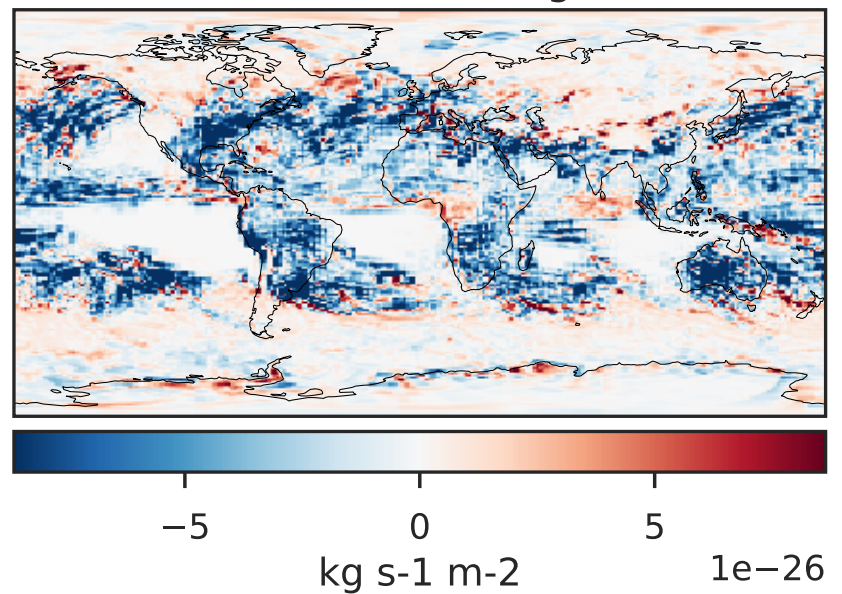
GCHP 14.2.2 using wind (c30) (Ref), Normalized by Area c30 GCHP 14.2.2 using wind (c180) (Dev), Normalized by Area c180



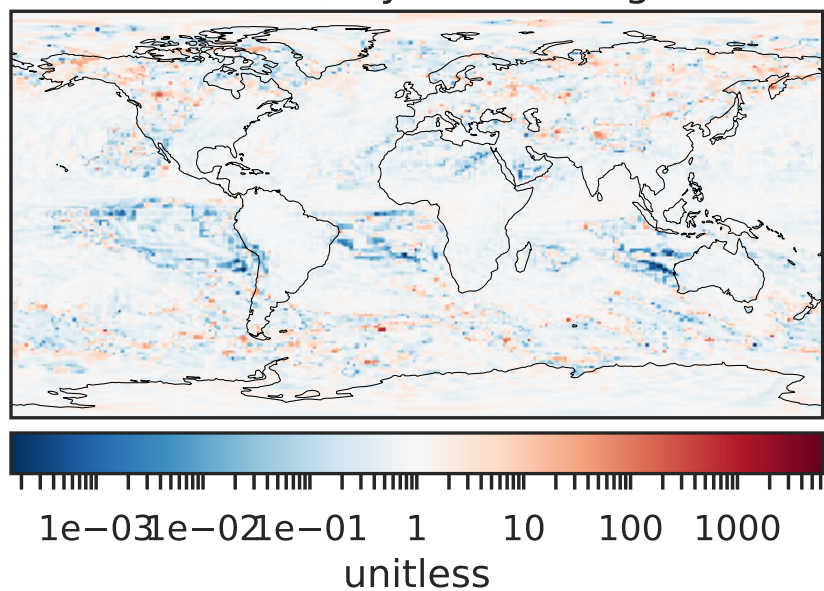
Difference (1x1.25)
Dev - Ref, Dynamic Range



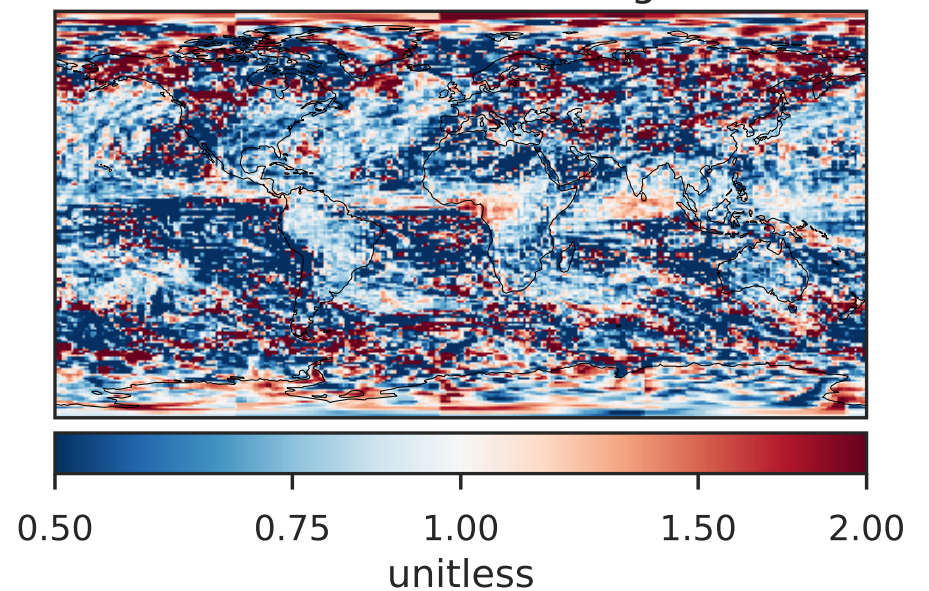
Difference (1x1.25)
Dev - Ref, Restricted Range [5%,95%]



Ratio (1x1.25)
Dev/Ref, Dynamic Range

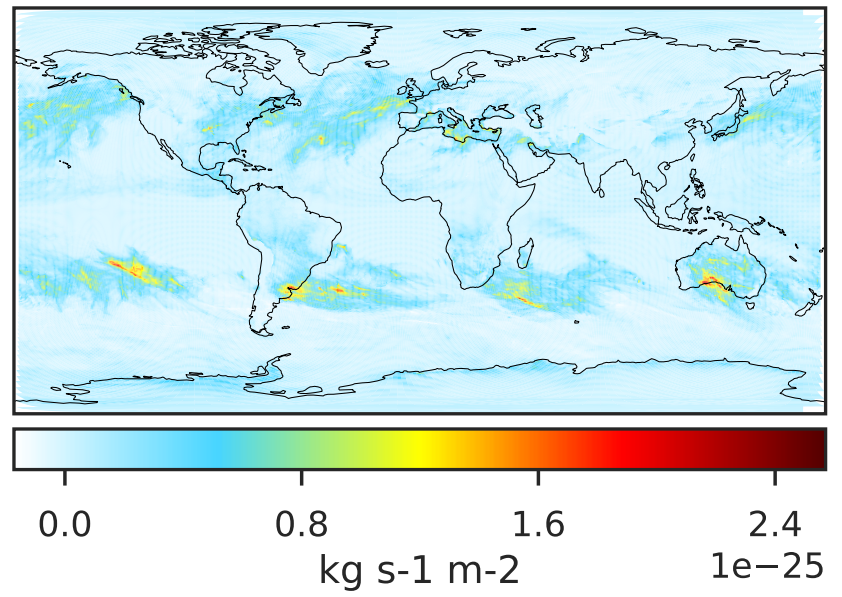
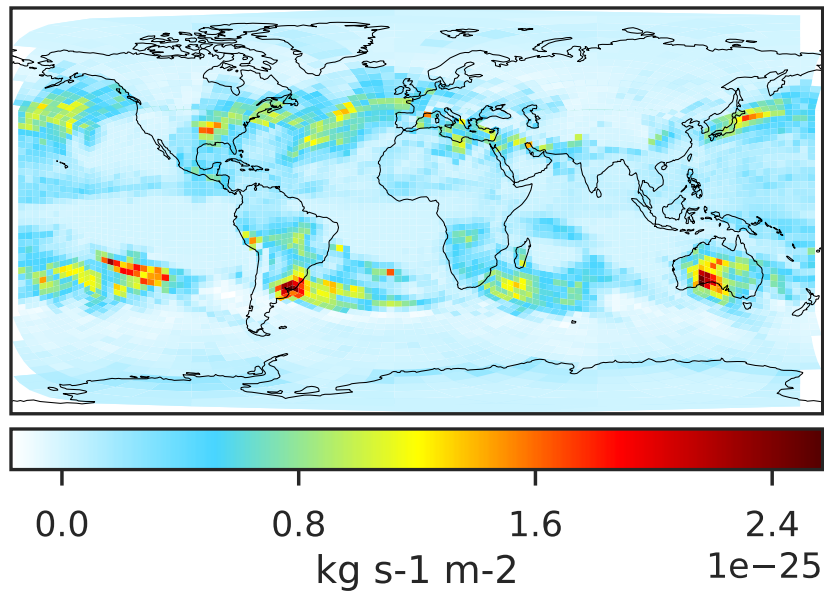


Ratio (1x1.25)
Dev/Ref, Fixed Range

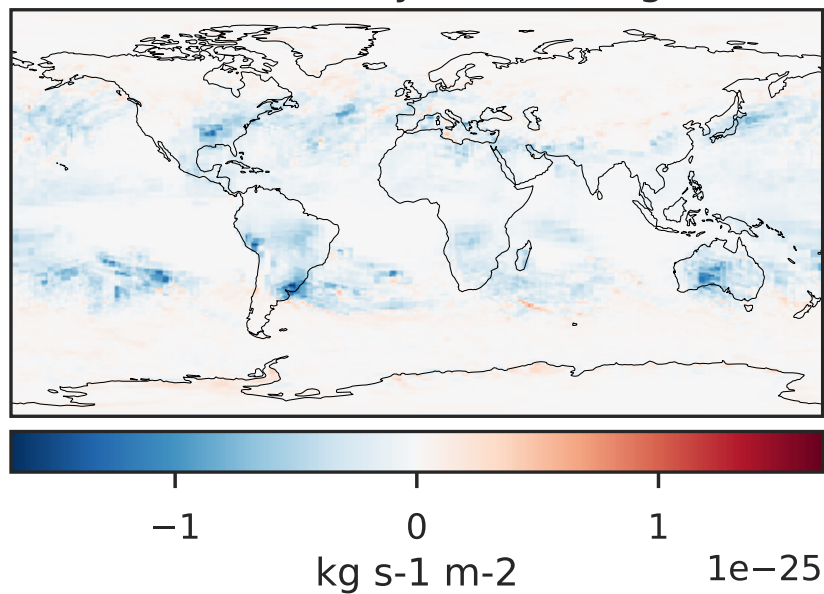


WetLossLS_Be7s (Oct2019)

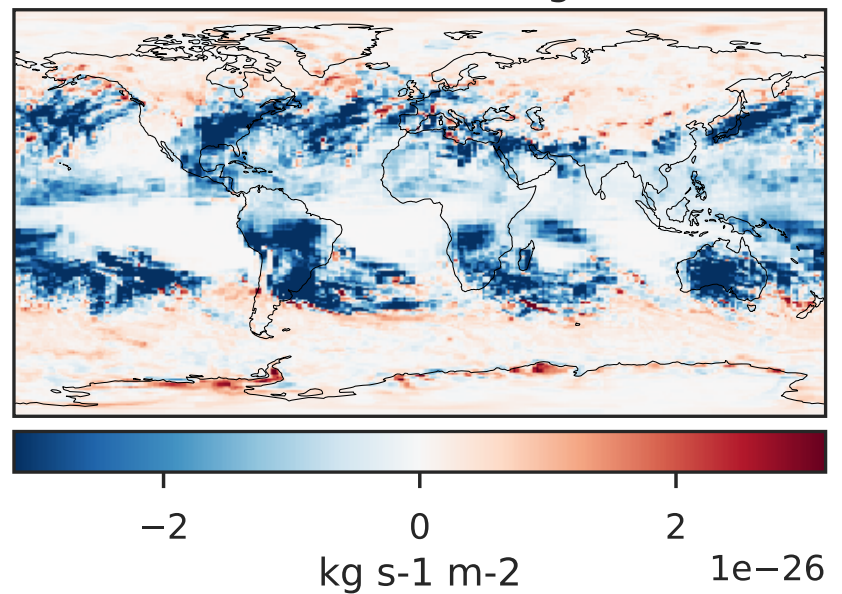
GCHP 14.2.2 using wind (c30) (Ref), Normalized by Area c30 GCHP 14.2.2 using wind (c180) (Dev), Normalized by Area c180



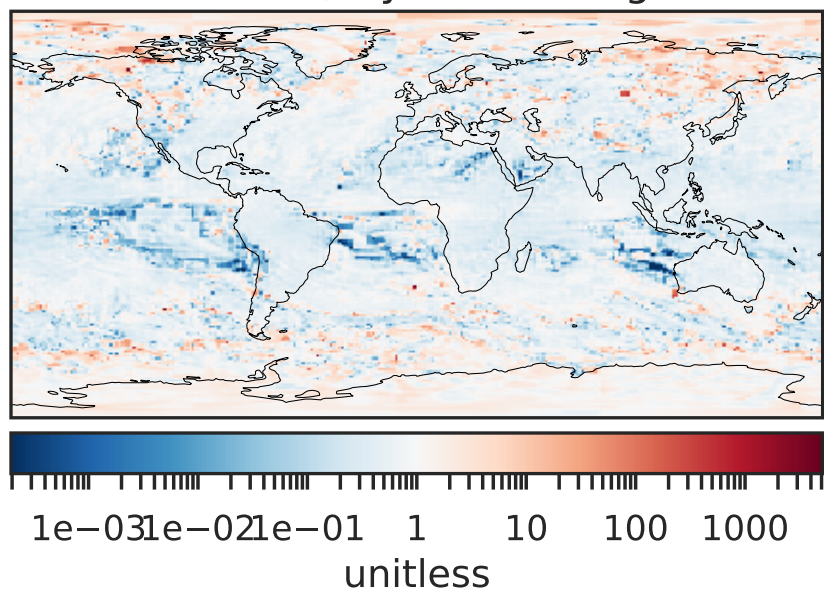
Difference (1x1.25)
Dev - Ref, Dynamic Range



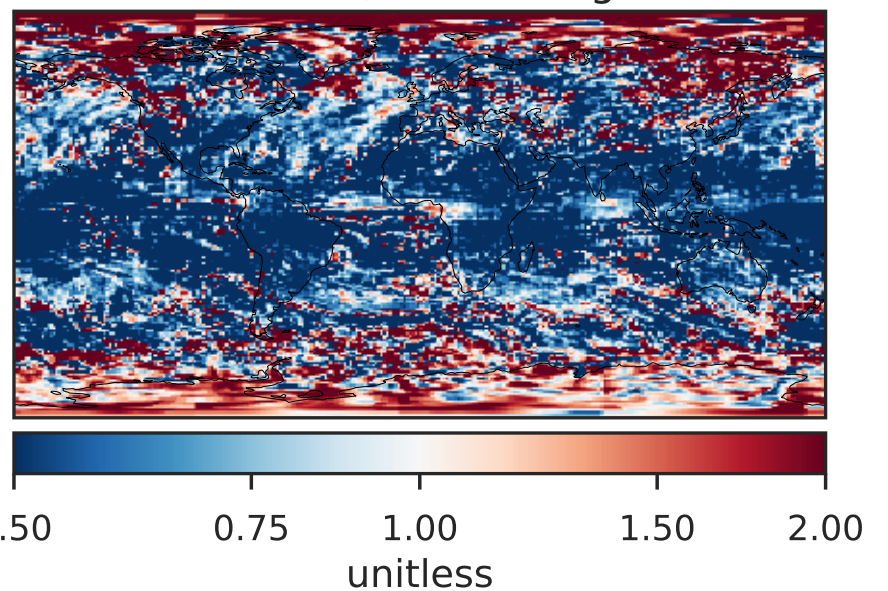
Difference (1x1.25)
Dev - Ref, Restricted Range [5%,95%]



Ratio (1x1.25)
Dev/Ref, Dynamic Range

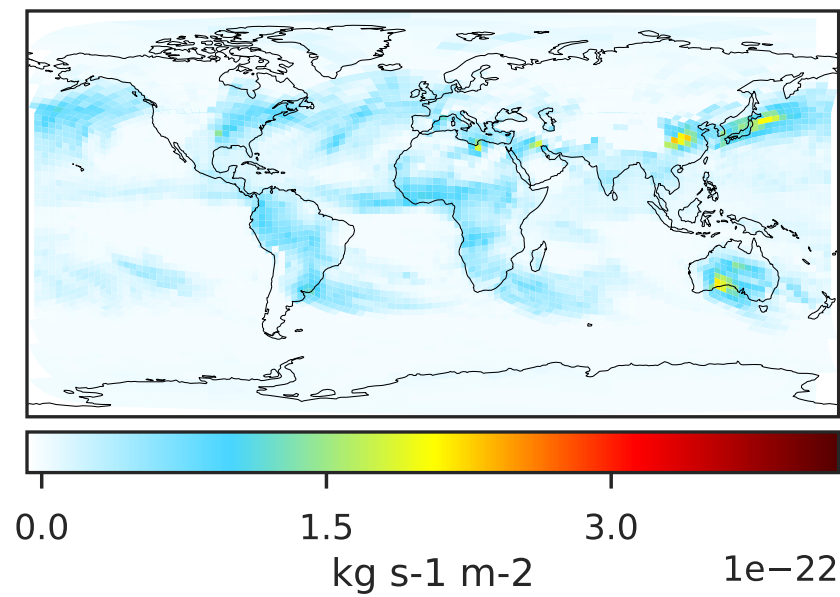


Ratio (1x1.25)
Dev/Ref, Fixed Range

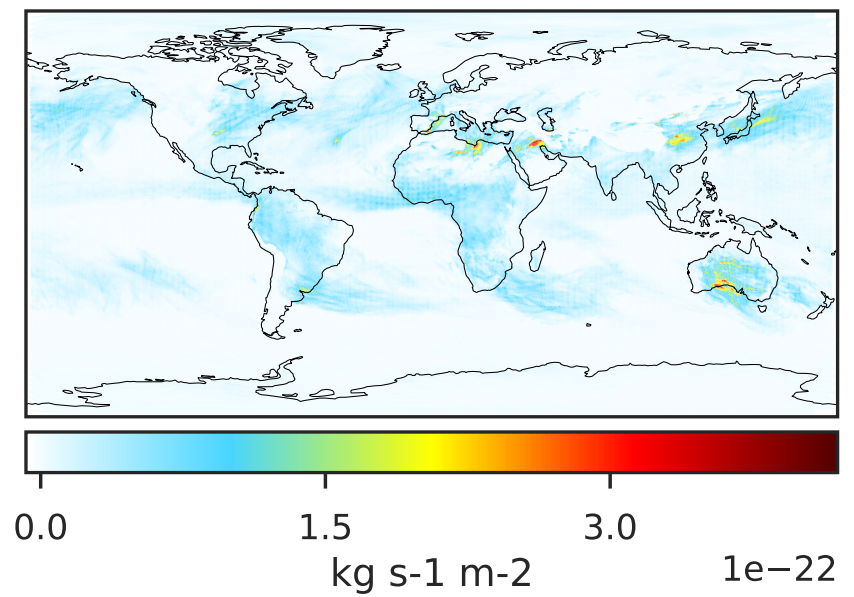


WetLossLS_Pb210 (Oct2019)

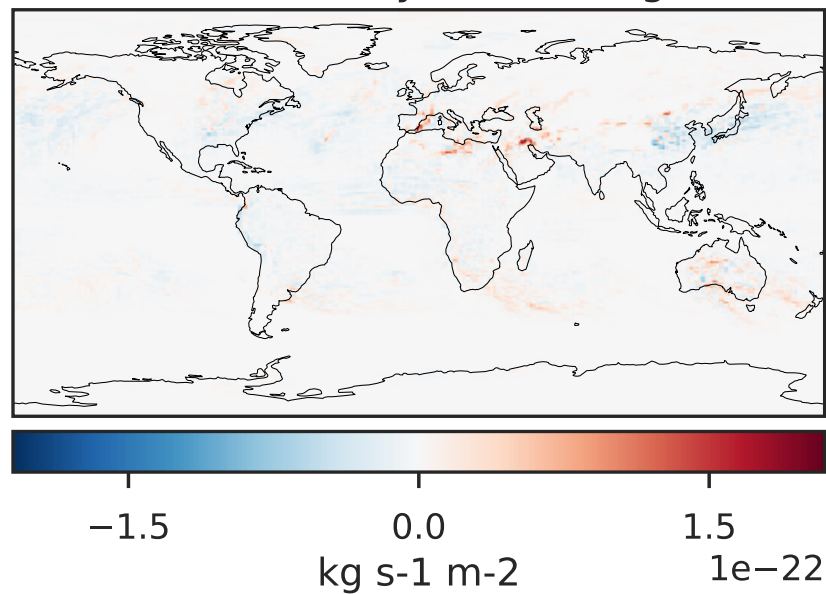
GCHP 14.2.2 using wind (c30) (Ref), Normalized by Area c30



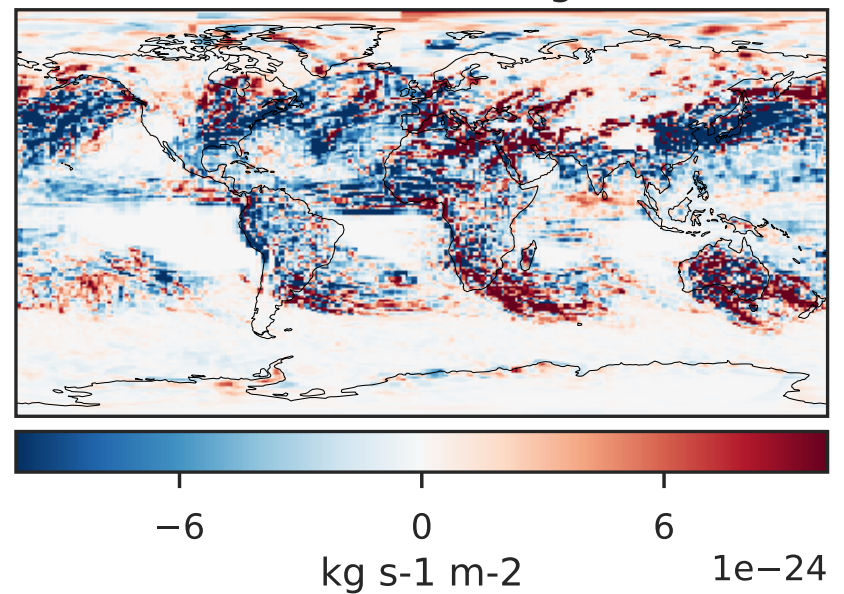
GCHP 14.2.2 using wind (c180) (Dev), Normalized by Area c180



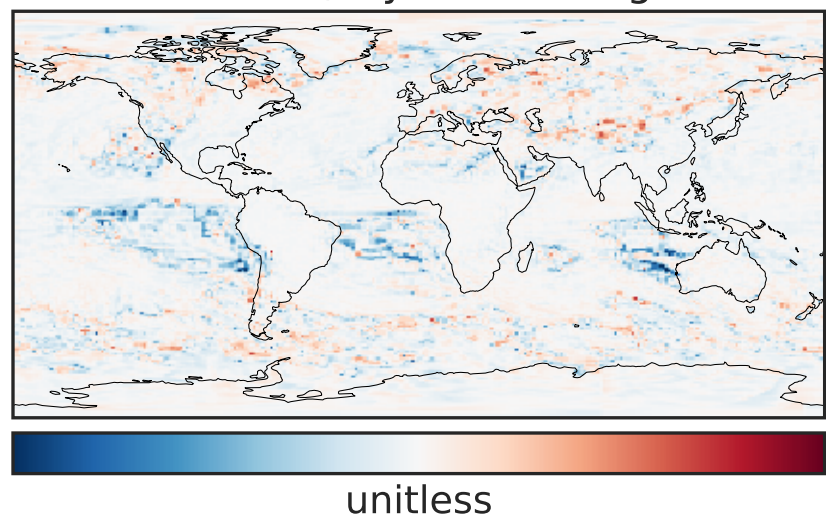
Difference (1x1.25)
Dev - Ref, Dynamic Range



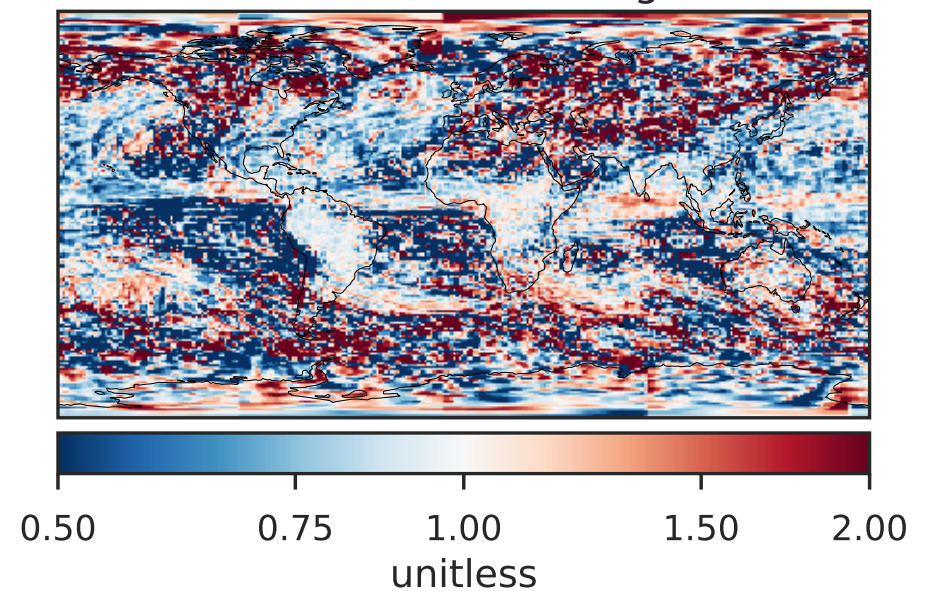
Difference (1x1.25)
Dev - Ref, Restricted Range [5%,95%]



Ratio (1x1.25)
Dev/Ref, Dynamic Range

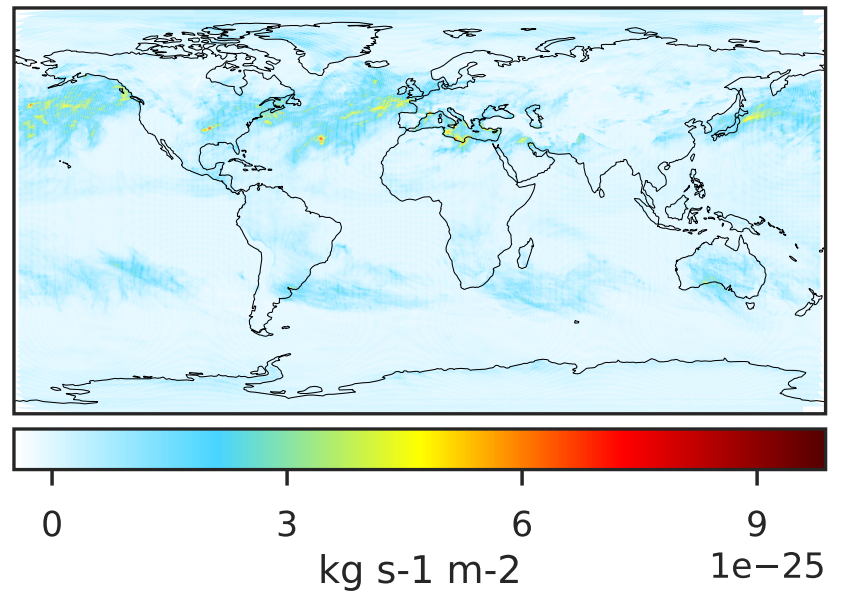
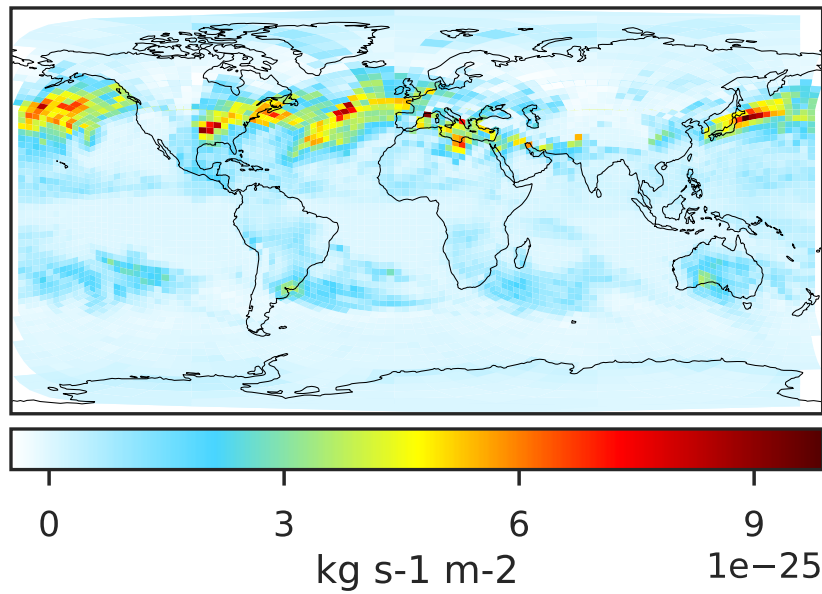


Ratio (1x1.25)
Dev/Ref, Fixed Range

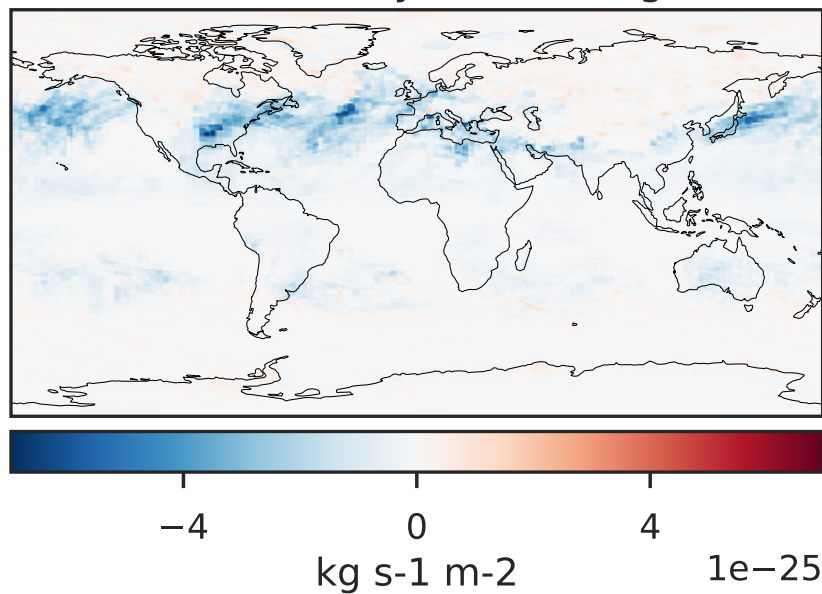


WetLossLS_Pb210s (Oct2019)

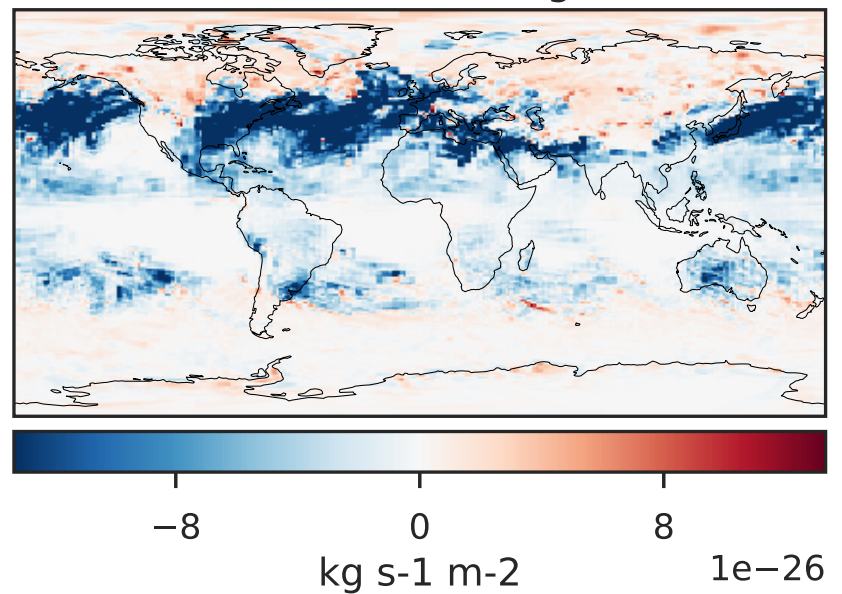
GCHP 14.2.2 using wind (c30) (Ref), Normalized by Area c30 GCHP 14.2.2 using wind (c180) (Dev), Normalized by Area c180



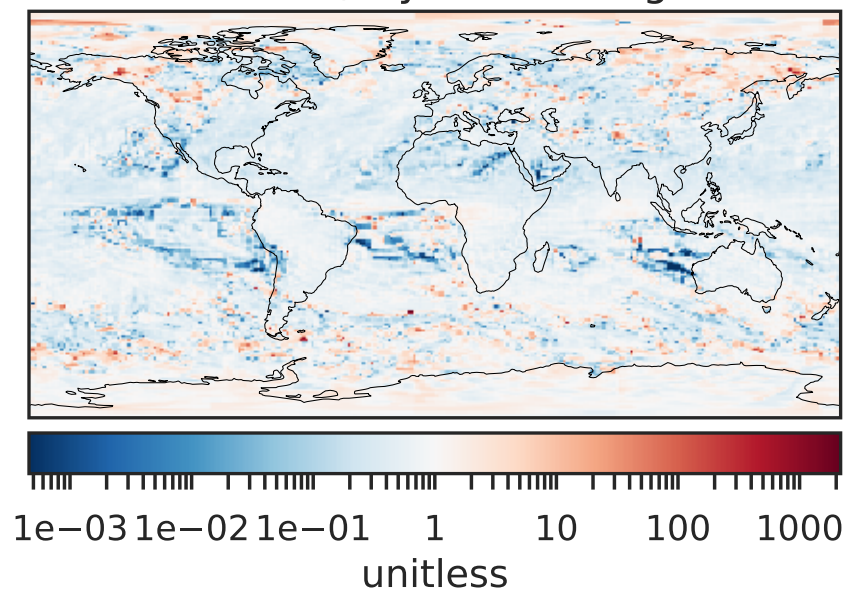
Difference (1x1.25)
Dev - Ref, Dynamic Range



Difference (1x1.25)
Dev - Ref, Restricted Range [5%,95%]



Ratio (1x1.25)
Dev/Ref, Dynamic Range



Ratio (1x1.25)
Dev/Ref, Fixed Range

