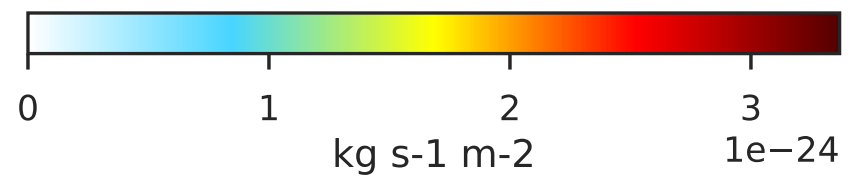
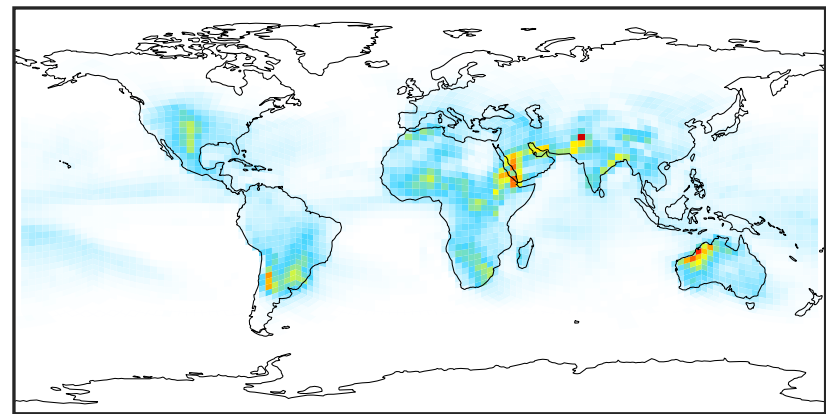
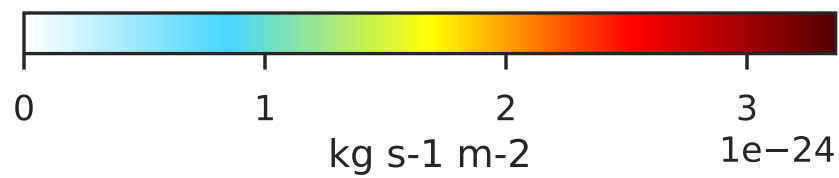
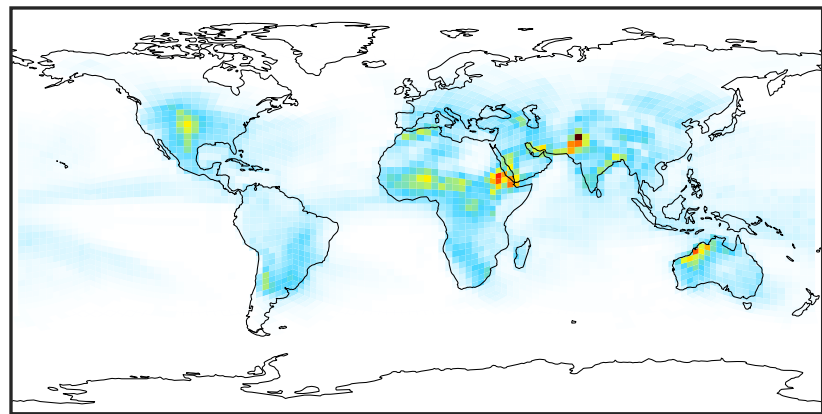
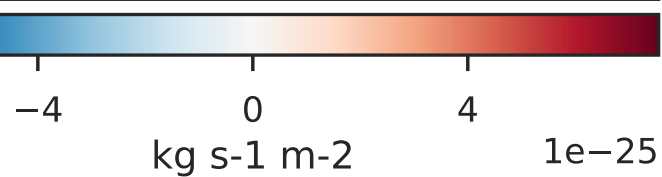
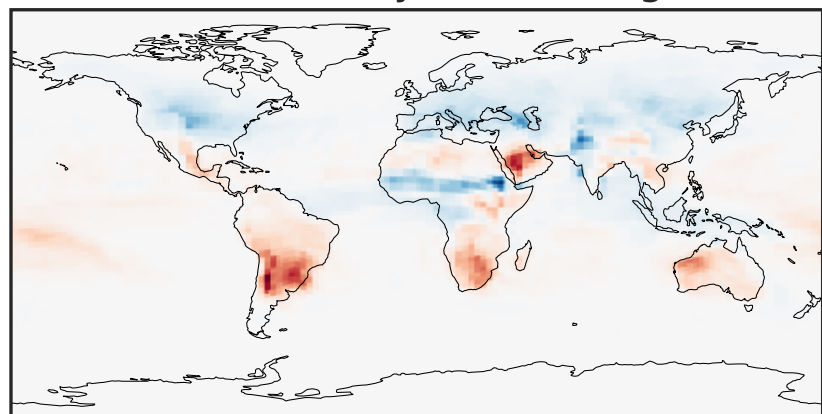


# WetLossConv\_Be10 (AnnualMean)

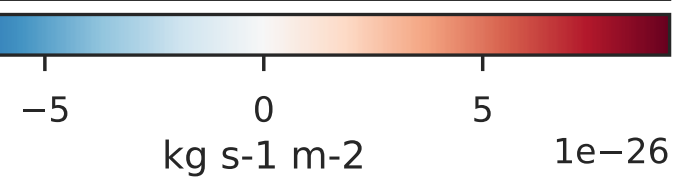
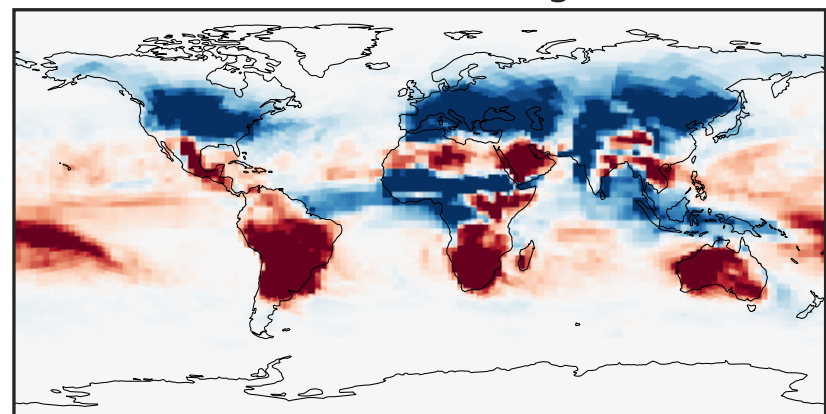
GCHP 14.2.2 using wind (Ref), Normalized by Area c30      GCHP 14.2.2 using mass flux (Dev), Normalized by Area c30



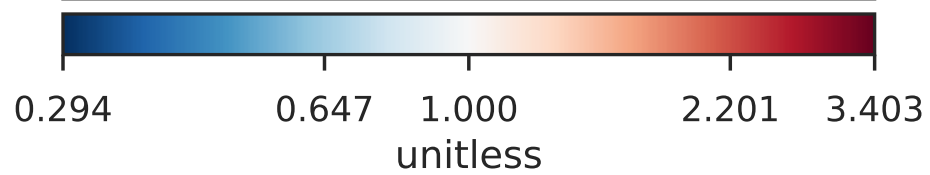
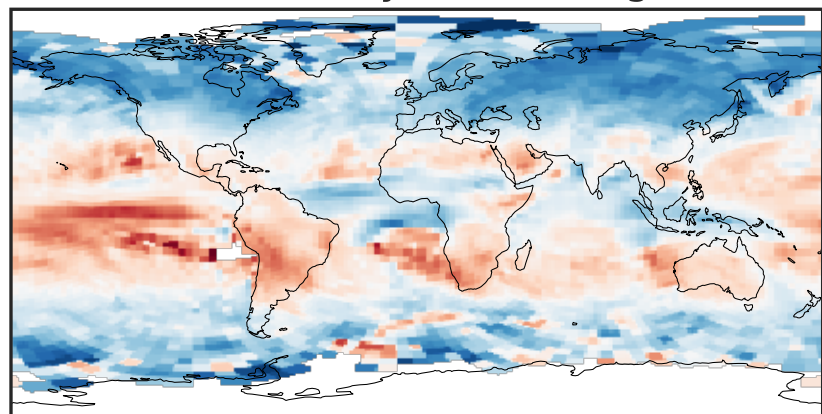
Difference (1x1.25)  
Dev - Ref, Dynamic Range



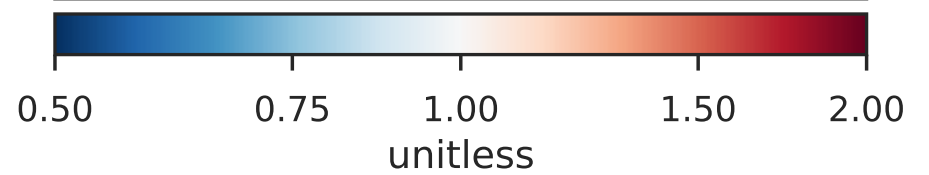
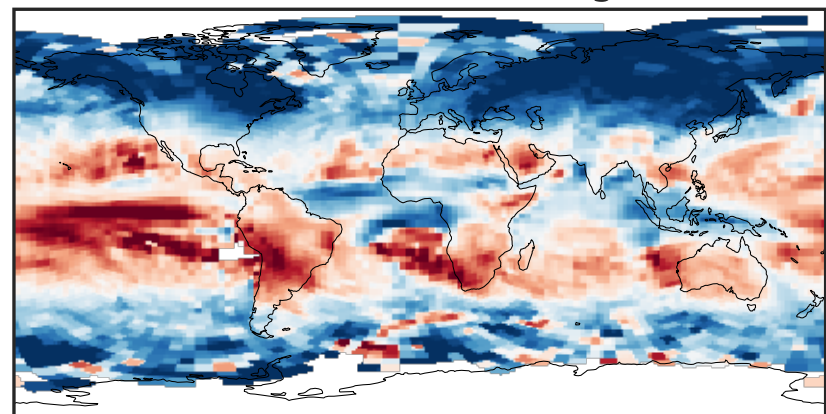
Difference (1x1.25)  
Dev - Ref, Restricted Range [5%,95%]



Ratio (1x1.25)  
Dev/Ref, Dynamic Range

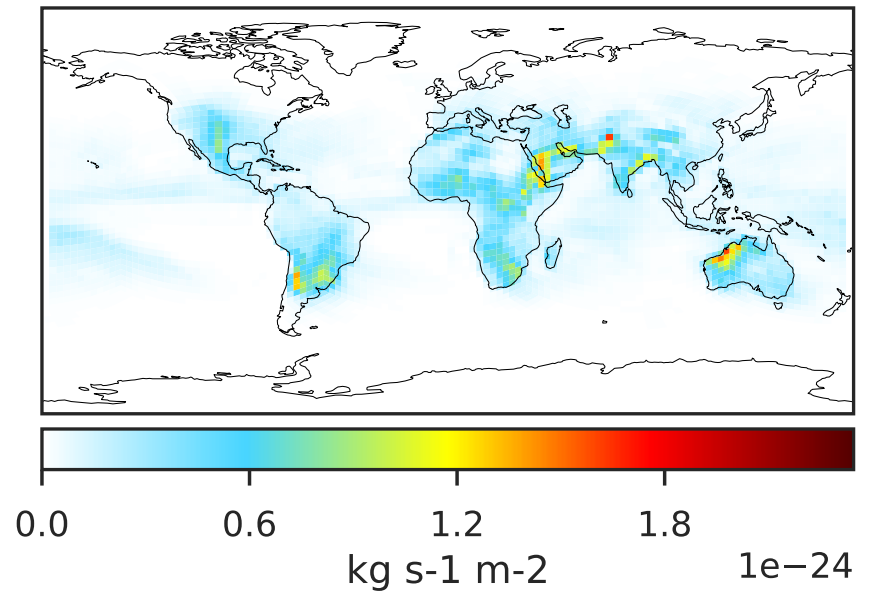
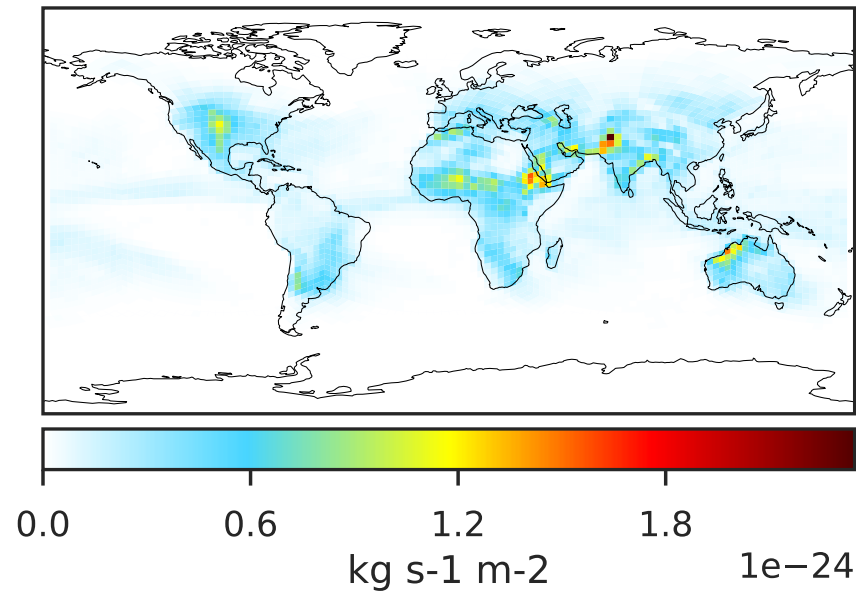


Ratio (1x1.25)  
Dev/Ref, Fixed Range

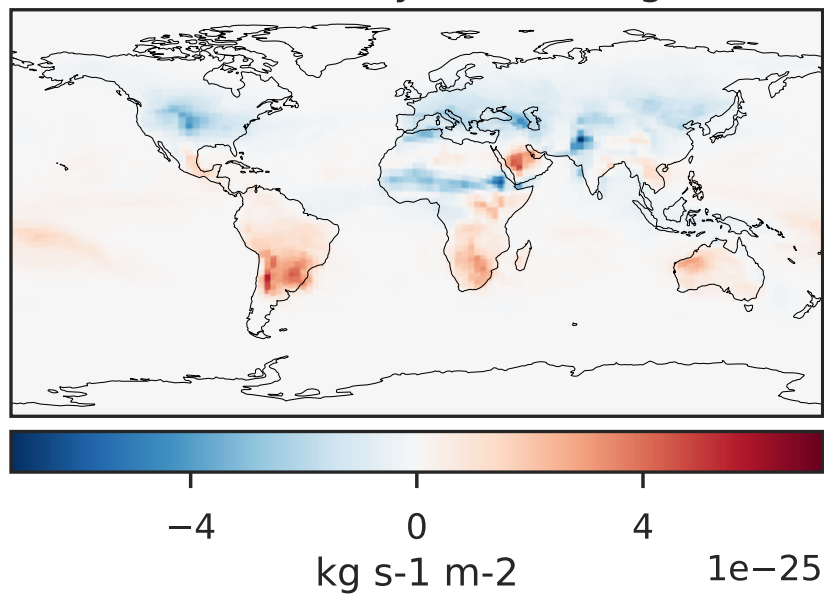


# WetLossConv\_Be10s (AnnualMean)

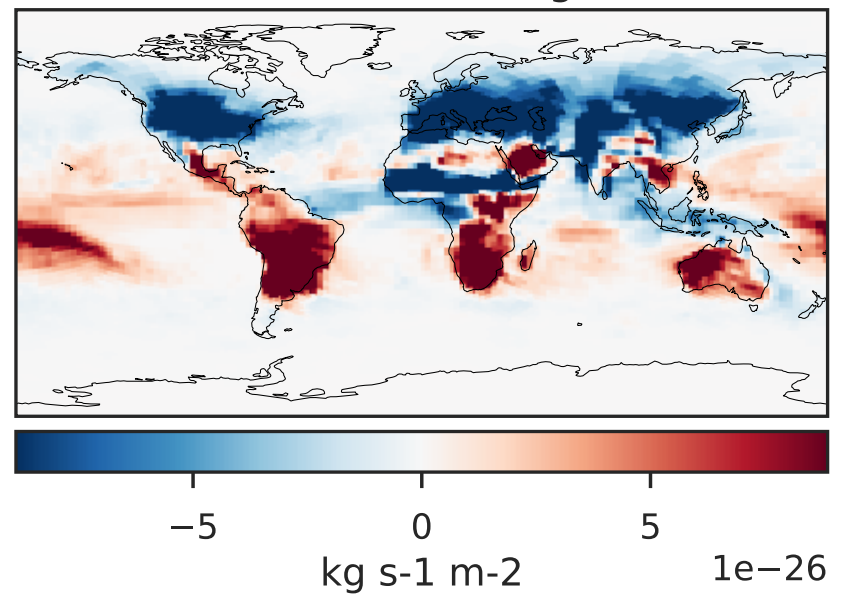
GCHP 14.2.2 using wind (Ref), Normalized by Area c30      GCHP 14.2.2 using mass flux (Dev), Normalized by Area c30



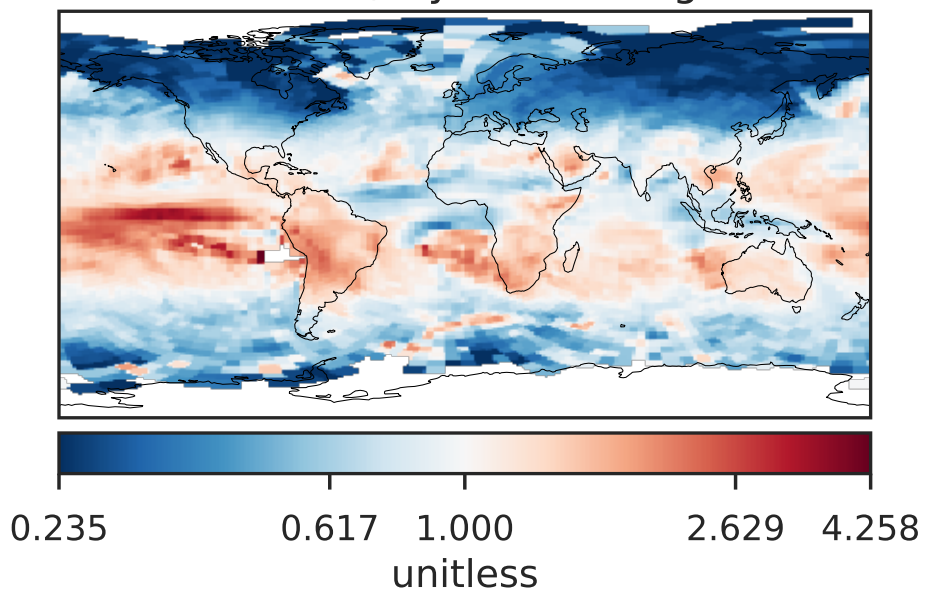
Difference (1x1.25)  
Dev - Ref, Dynamic Range



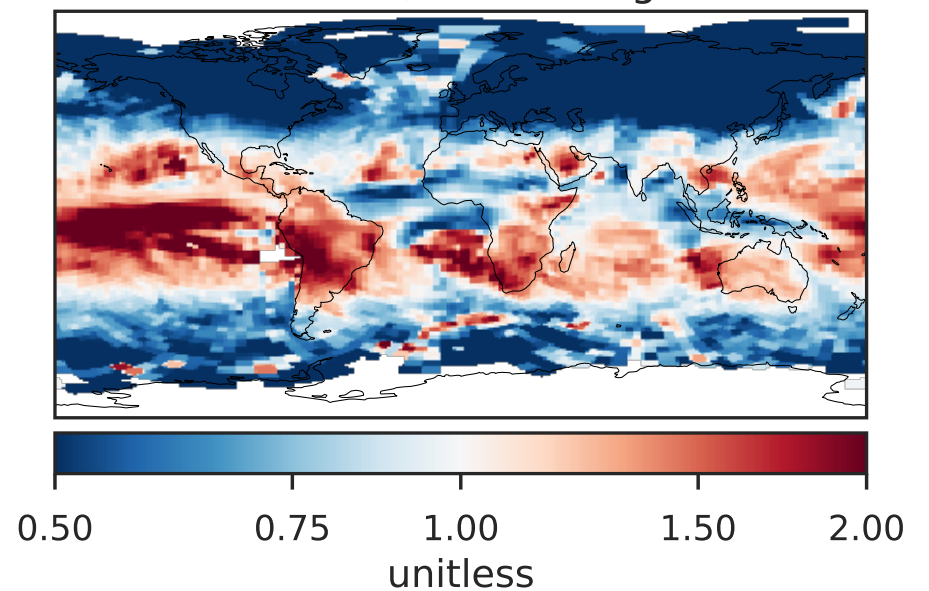
Difference (1x1.25)  
Dev - Ref, Restricted Range [5%,95%]



Ratio (1x1.25)  
Dev/Ref, Dynamic Range



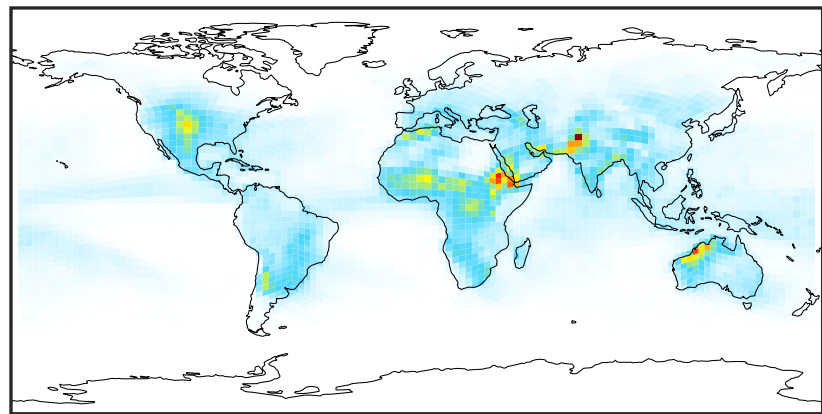
Ratio (1x1.25)  
Dev/Ref, Fixed Range



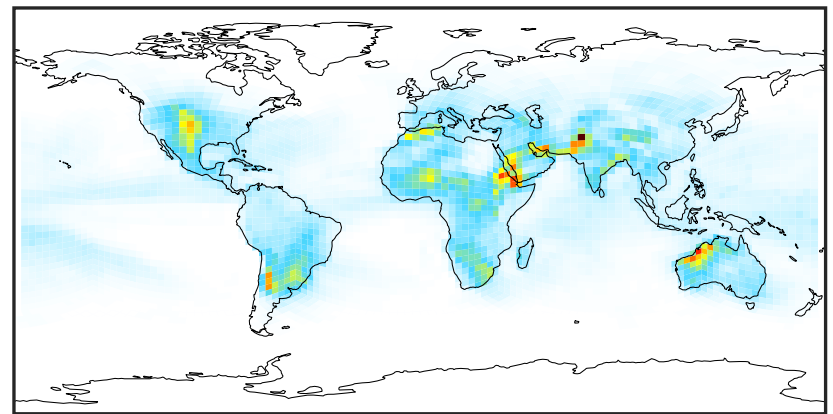


# WetLossConv\_Be7 (AnnualMean)

GCHP 14.2.2 using wind (Ref), Normalized by Area c30      GCHP 14.2.2 using mass flux (Dev), Normalized by Area c30

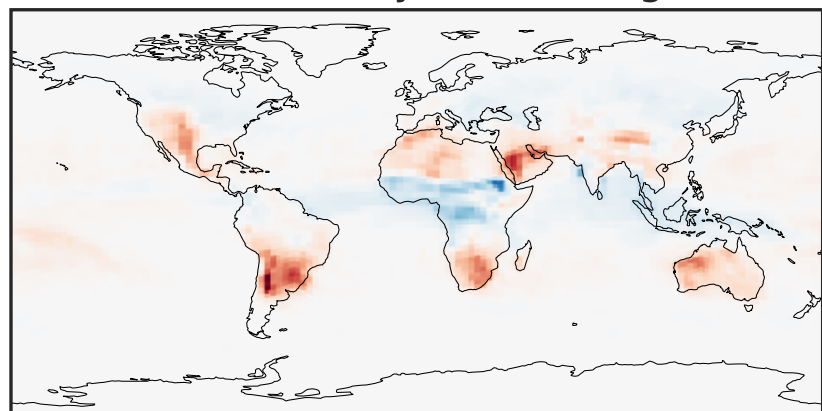


0 2 4 6  
kg s-1 m-2 1e-25



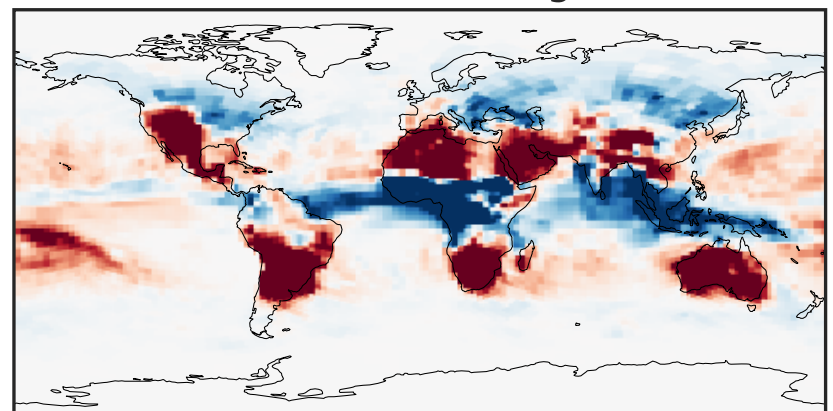
0 2 4 6  
kg s-1 m-2 1e-25

Difference (1x1.25)  
Dev - Ref, Dynamic Range



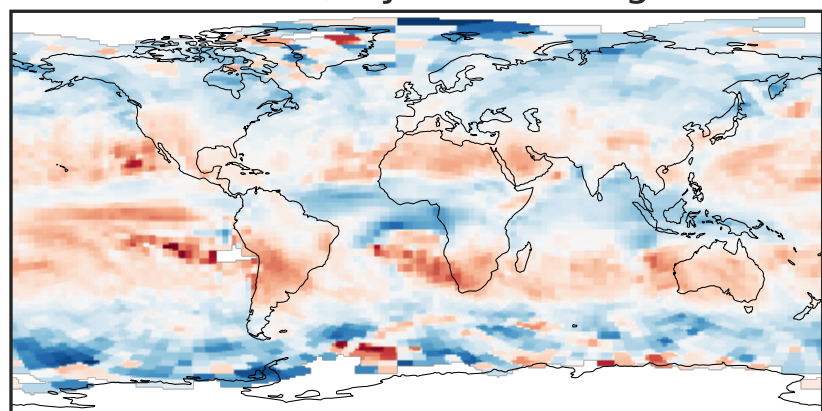
-8 0 8  
kg s-1 m-2 1e-26

Difference (1x1.25)  
Dev - Ref, Restricted Range [5%,95%]



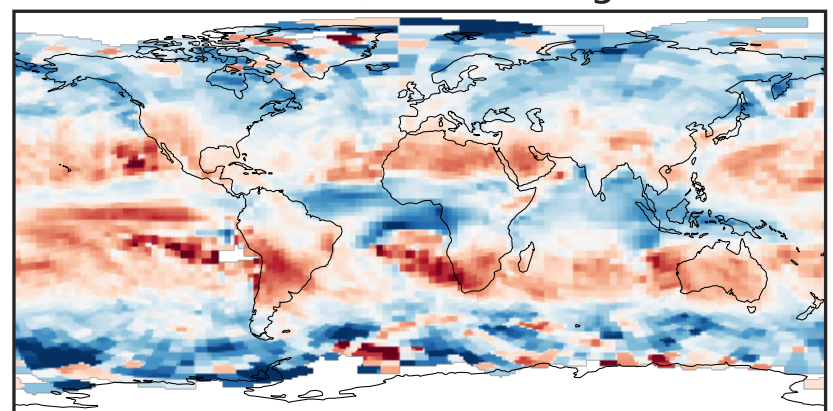
-1 0 1  
kg s-1 m-2 1e-26

Ratio (1x1.25)  
Dev/Ref, Dynamic Range



0.362 0.681 1.000 1.880 2.761  
unitless

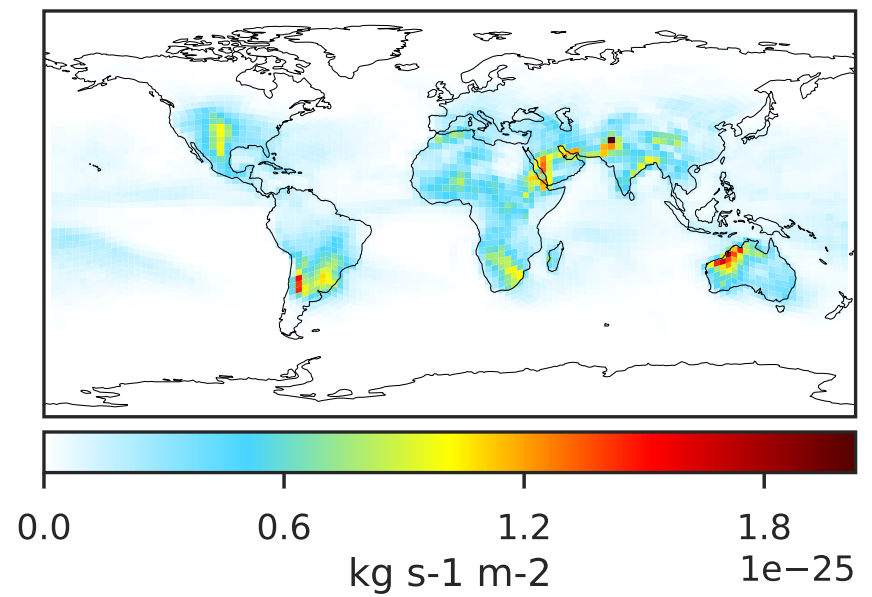
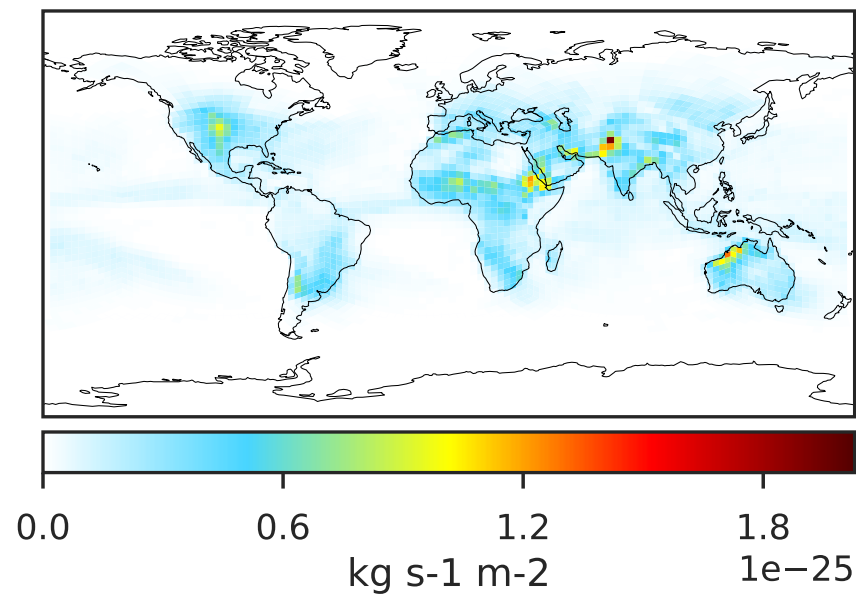
Ratio (1x1.25)  
Dev/Ref, Fixed Range



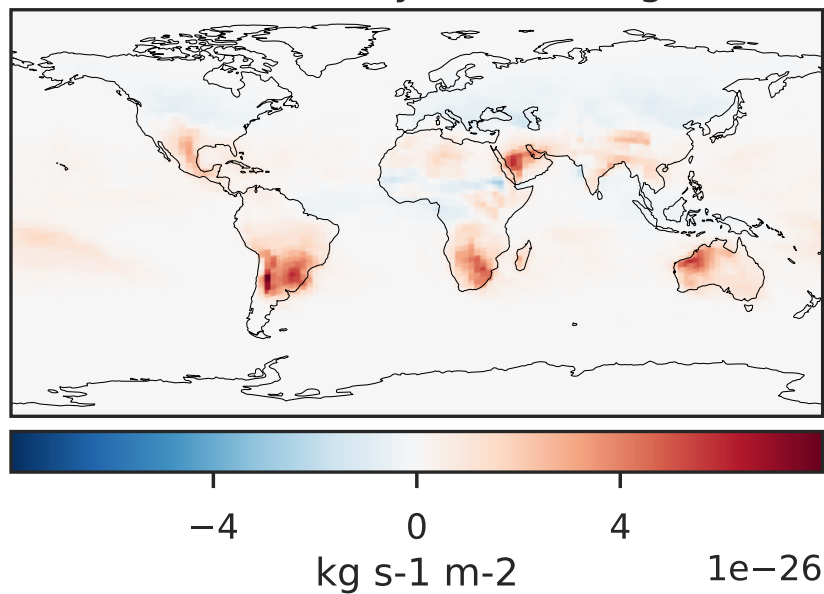
0.50 0.75 1.00 1.50 2.00  
unitless

# WetLossConv\_Be7s (AnnualMean)

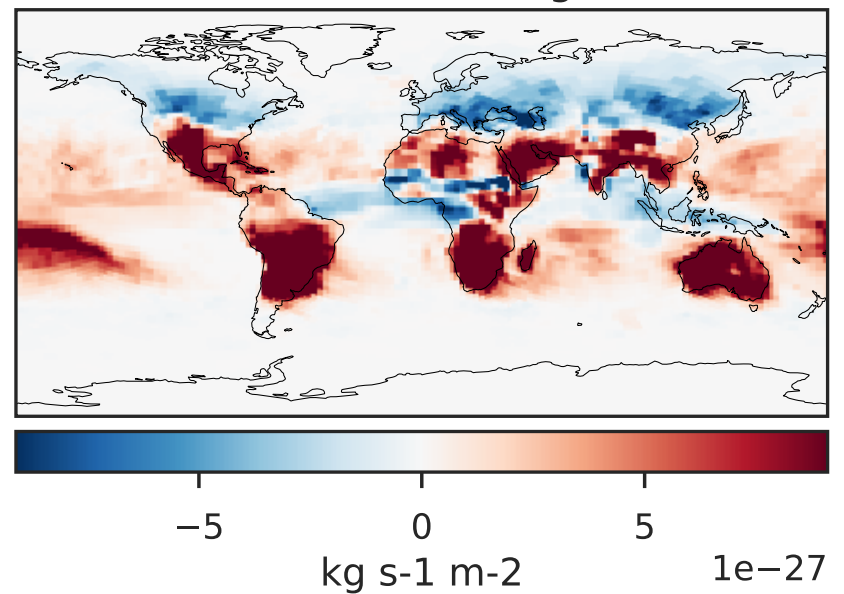
GCHP 14.2.2 using wind (Ref), Normalized by Area  
GCHP 14.2.2 using mass flux (Dev), Normalized by Area



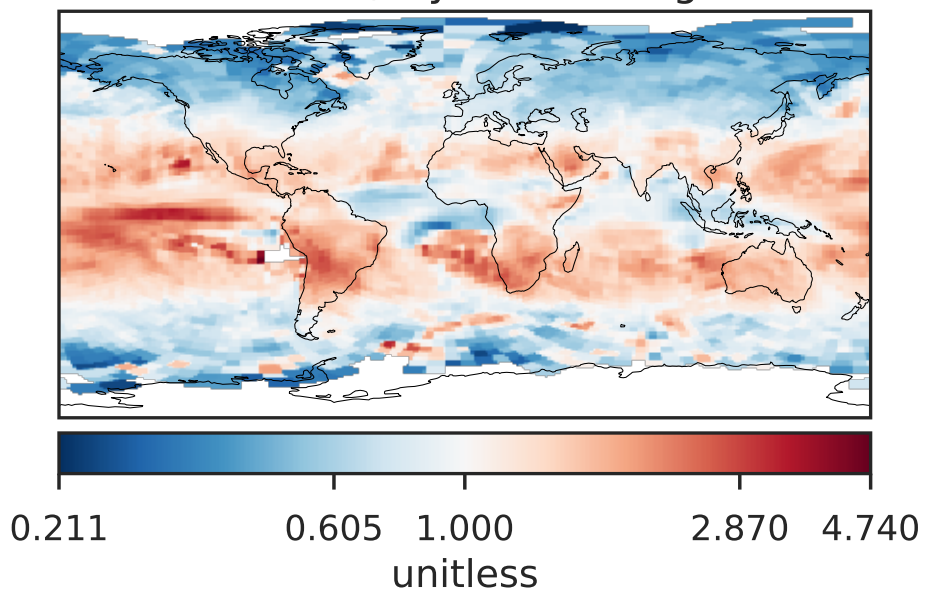
Difference (1x1.25)  
Dev - Ref, Dynamic Range



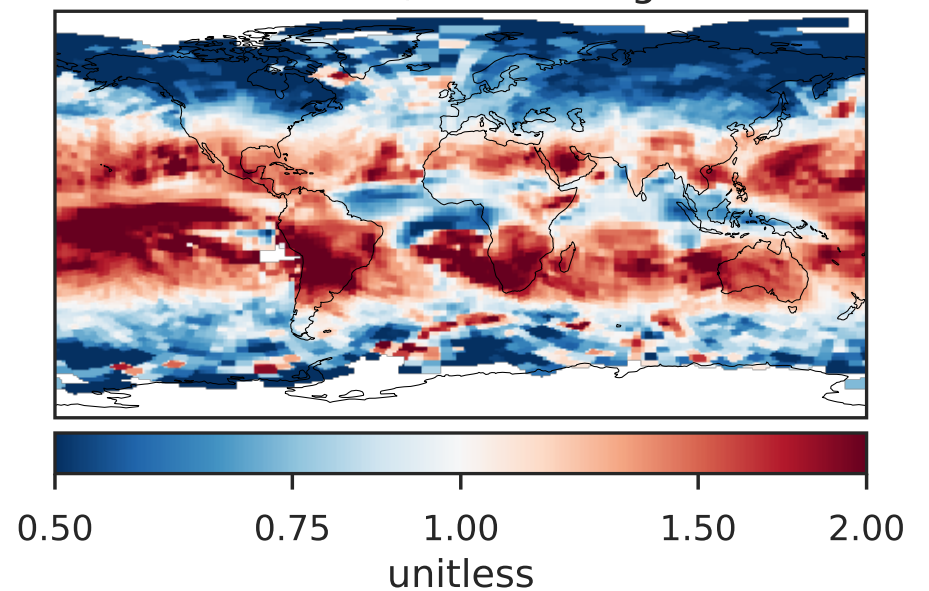
Difference (1x1.25)  
Dev - Ref, Restricted Range [5%,95%]



Ratio (1x1.25)  
Dev/Ref, Dynamic Range



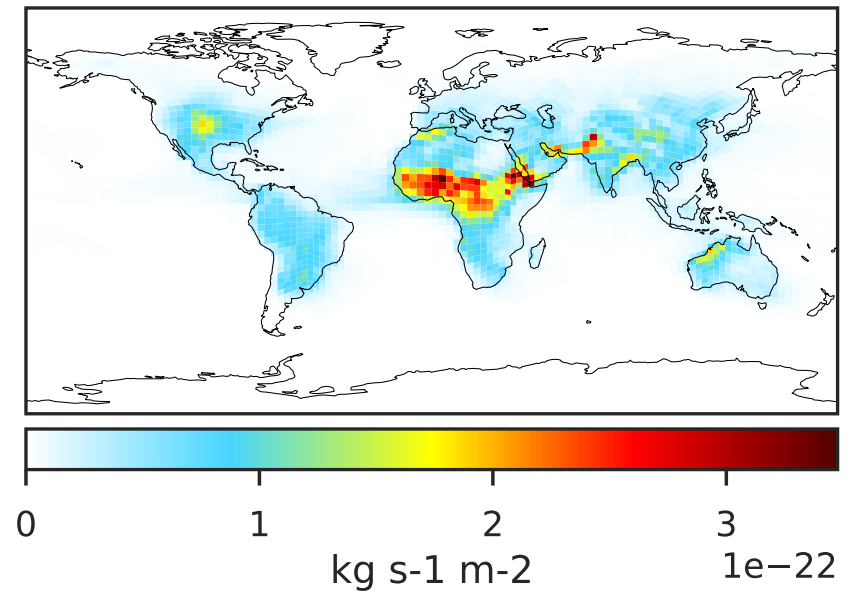
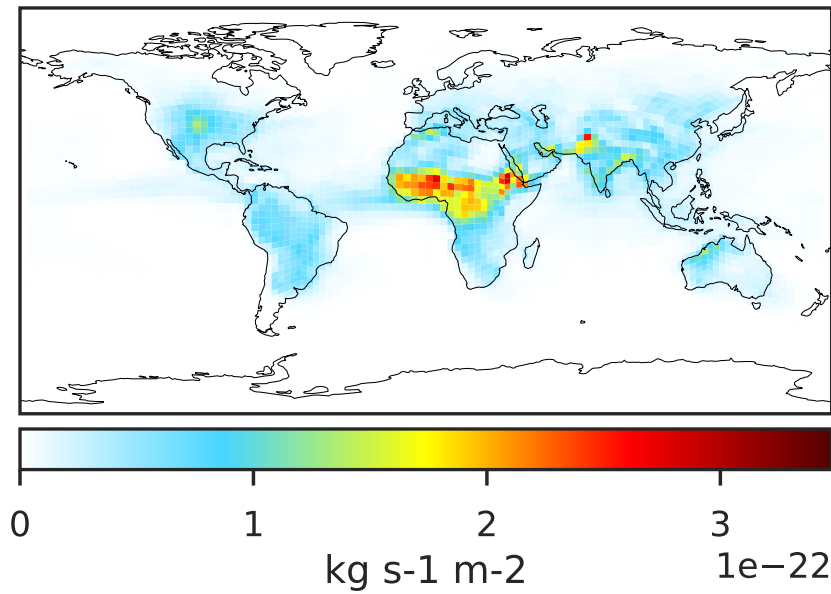
Ratio (1x1.25)  
Dev/Ref, Fixed Range



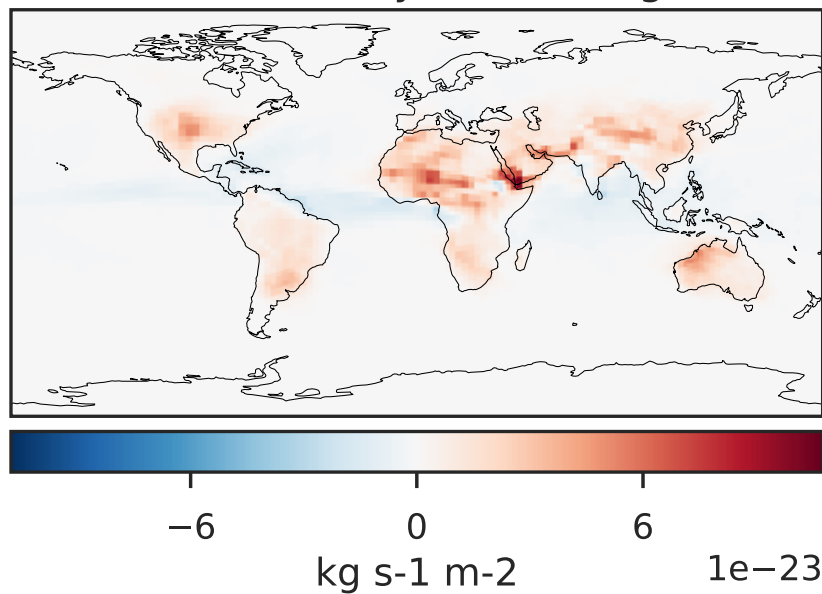


# WetLossConv\_Pb210 (AnnualMean)

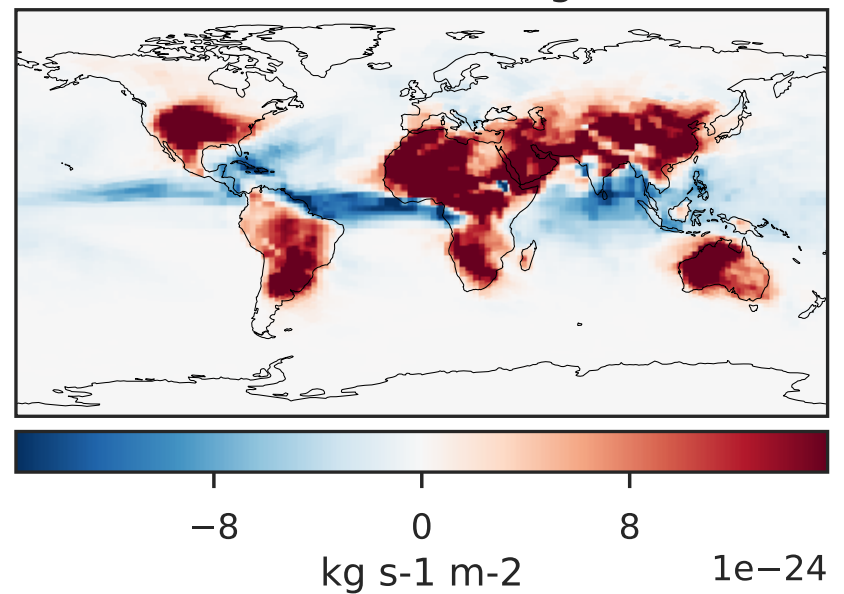
GCHP 14.2.2 using wind (Ref), Normalized by Area  
GCHP 14.2.2 using mass flux (Dev), Normalized by Area



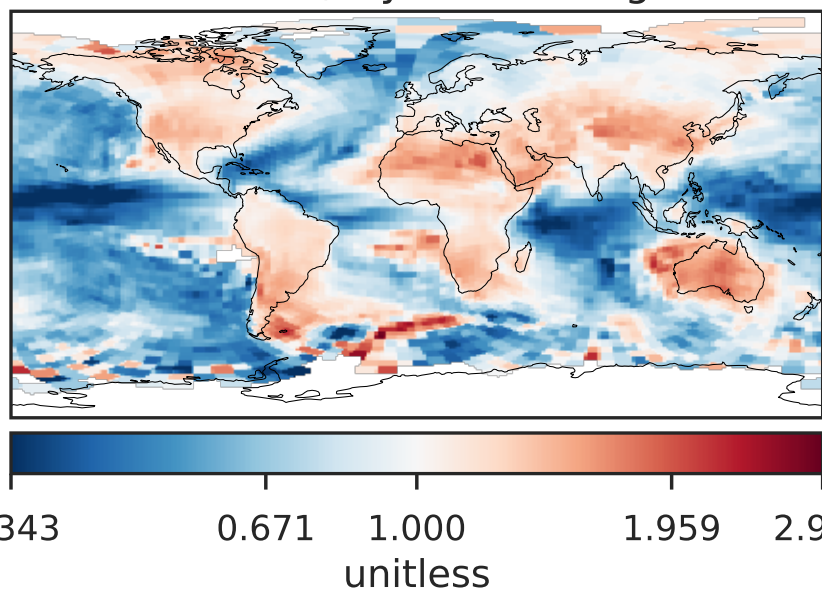
Difference (1x1.25)  
Dev - Ref, Dynamic Range



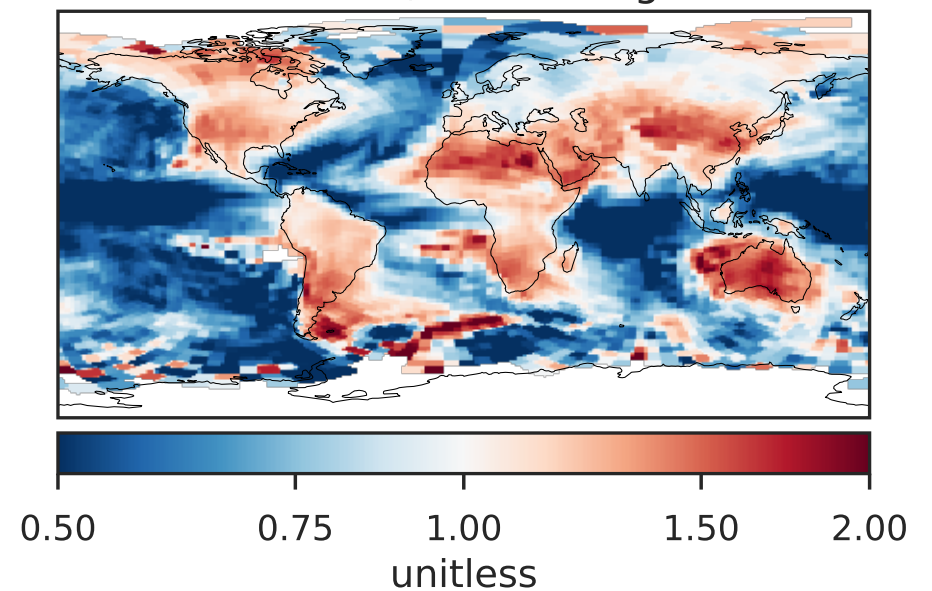
Difference (1x1.25)  
Dev - Ref, Restricted Range [5%,95%]



Ratio (1x1.25)  
Dev/Ref, Dynamic Range

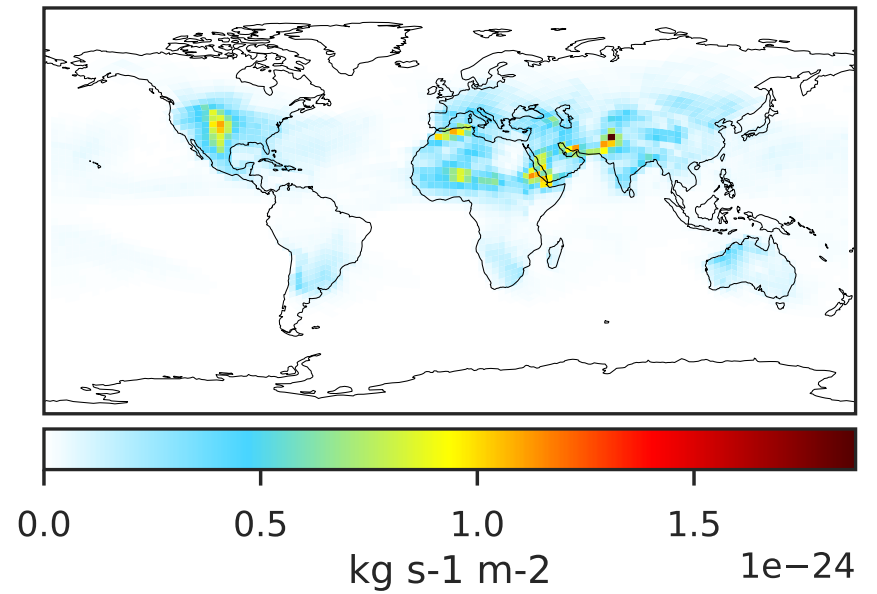
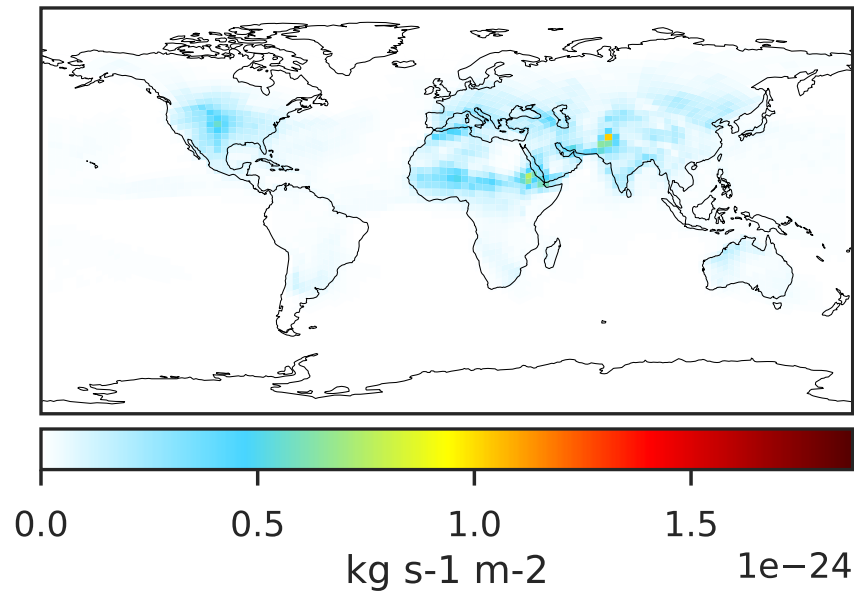


Ratio (1x1.25)  
Dev/Ref, Fixed Range

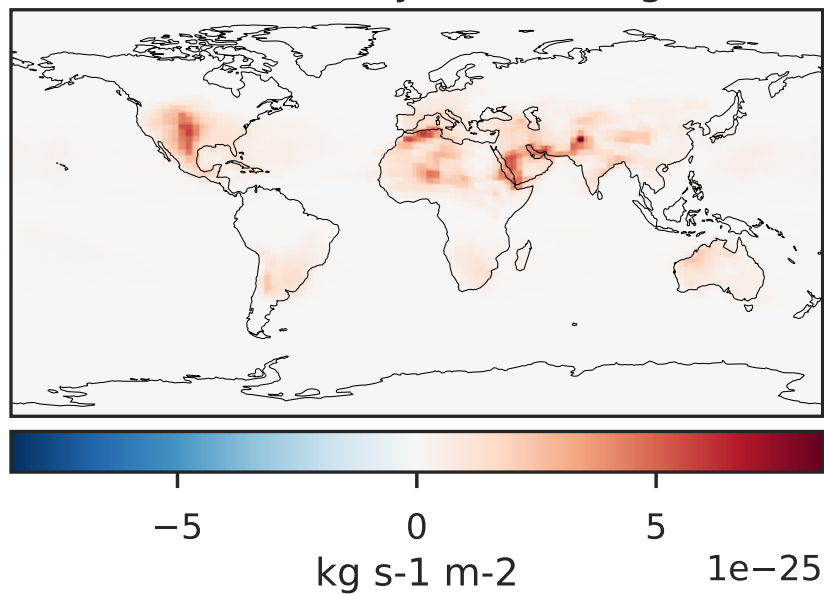


# WetLossConv\_Pb210s (AnnualMean)

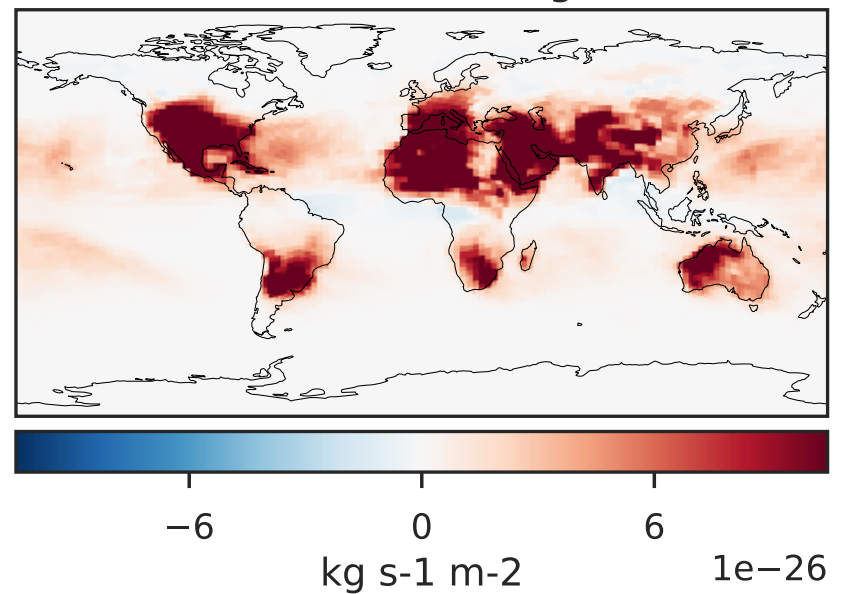
GCHP 14.2.2 using wind (Ref), Normalized by Area c30      GCHP 14.2.2 using mass flux (Dev), Normalized by Area c30



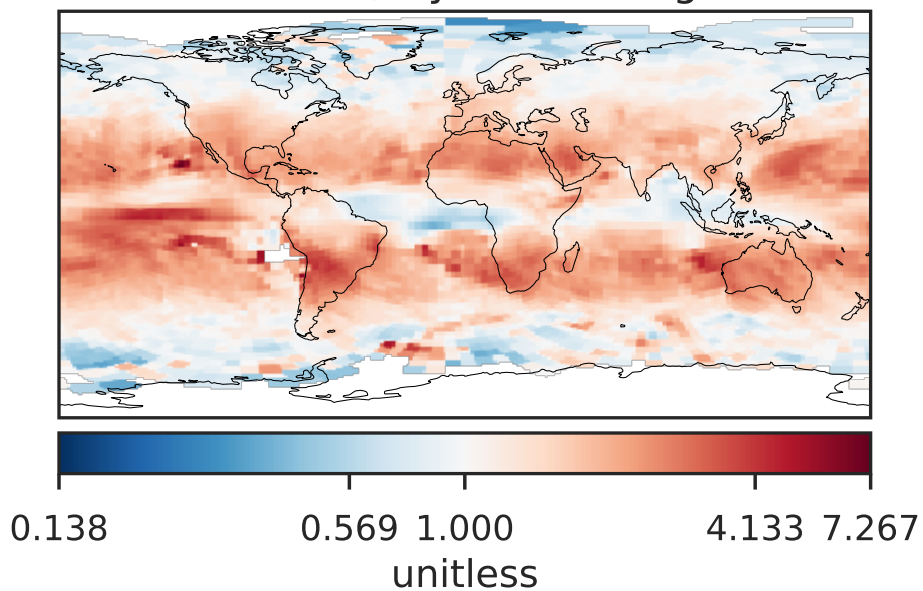
Difference (1x1.25)  
Dev - Ref, Dynamic Range



Difference (1x1.25)  
Dev - Ref, Restricted Range [5%,95%]



Ratio (1x1.25)  
Dev/Ref, Dynamic Range



Ratio (1x1.25)  
Dev/Ref, Fixed Range

