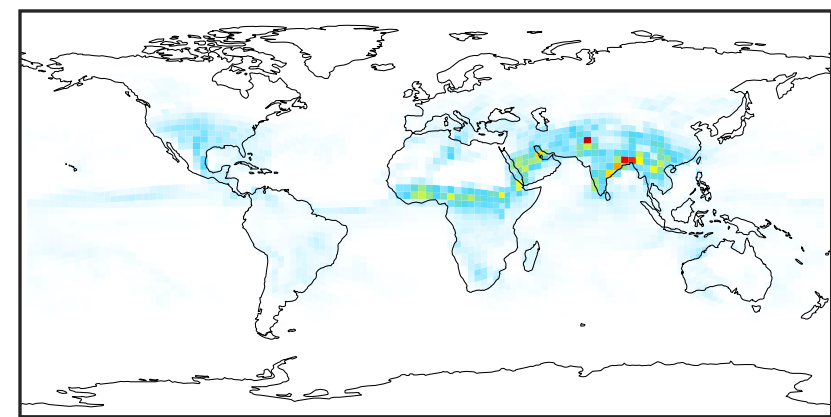
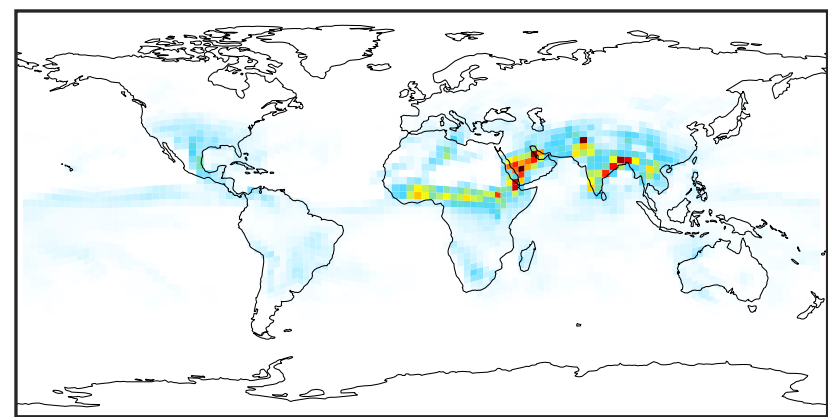


# WetLossConv\_Be10 (Apr2019)

GCHP 14.2.2 using wind (Ref), Normalized by Area  
GCHP 14.2.2 using mass flux (Dev), Normalized by Area

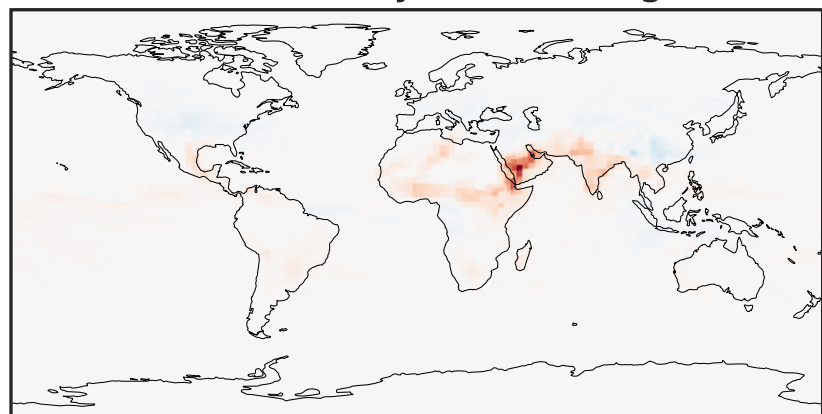


0 2 4 6  
kg s-1 m-2 1e-24



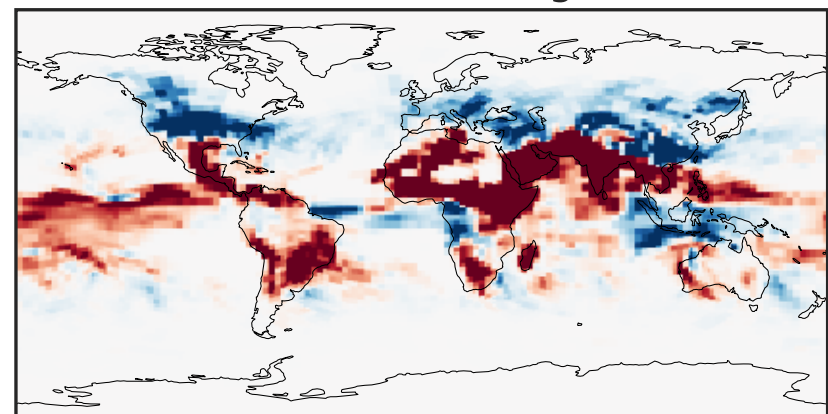
0 2 4 6  
kg s-1 m-2 1e-24

Difference (1x1.25)  
Dev - Ref, Dynamic Range



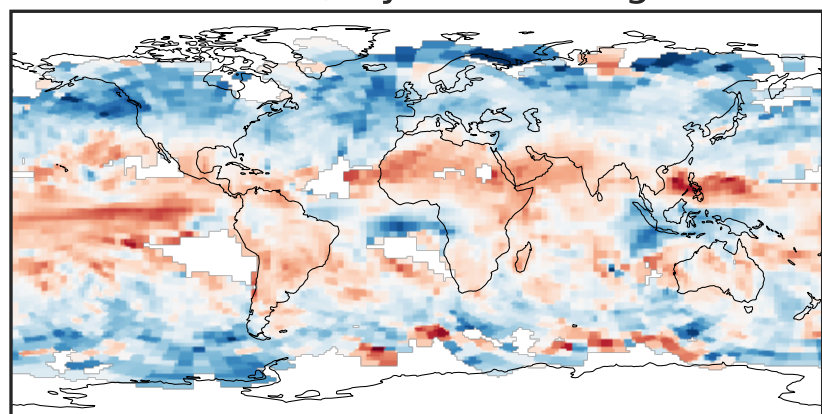
-2.5 0.0 2.5  
kg s-1 m-2 1e-24

Difference (1x1.25)  
Dev - Ref, Restricted Range [5%,95%]



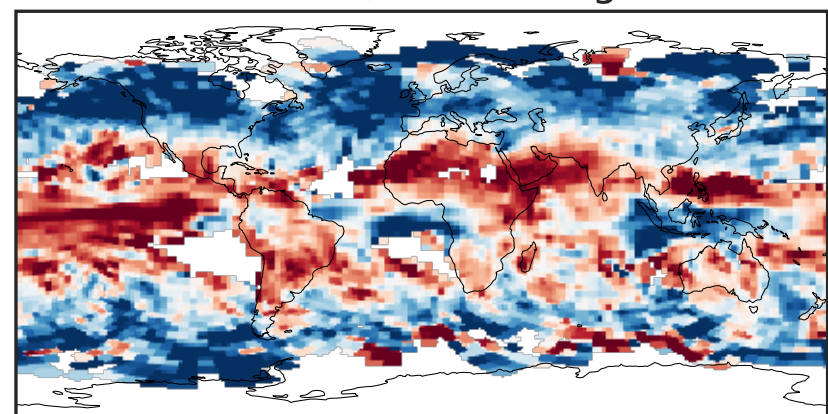
-8 0 8  
kg s-1 m-2 1e-26

Ratio (1x1.25)  
Dev/Ref, Dynamic Range



0.203 0.602 1.000 2.959 4.918  
unitless

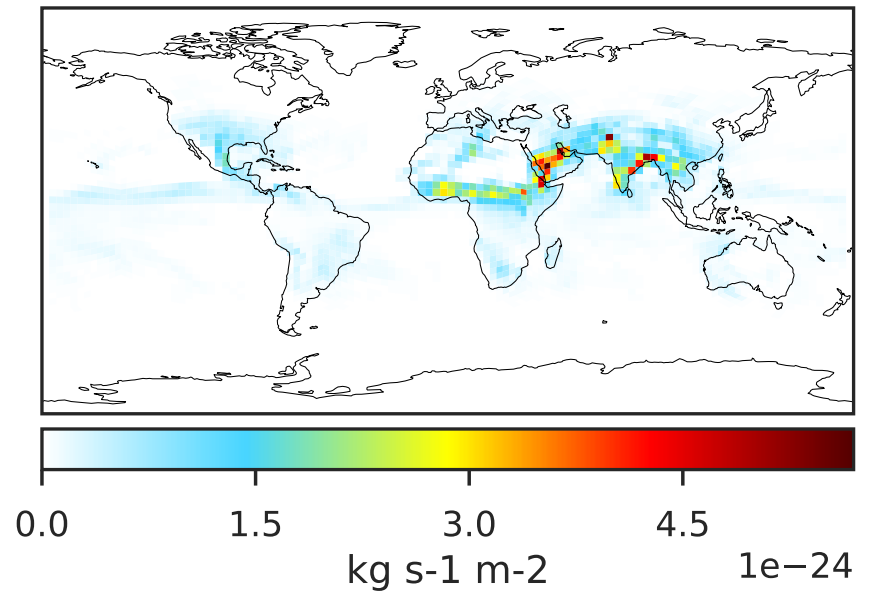
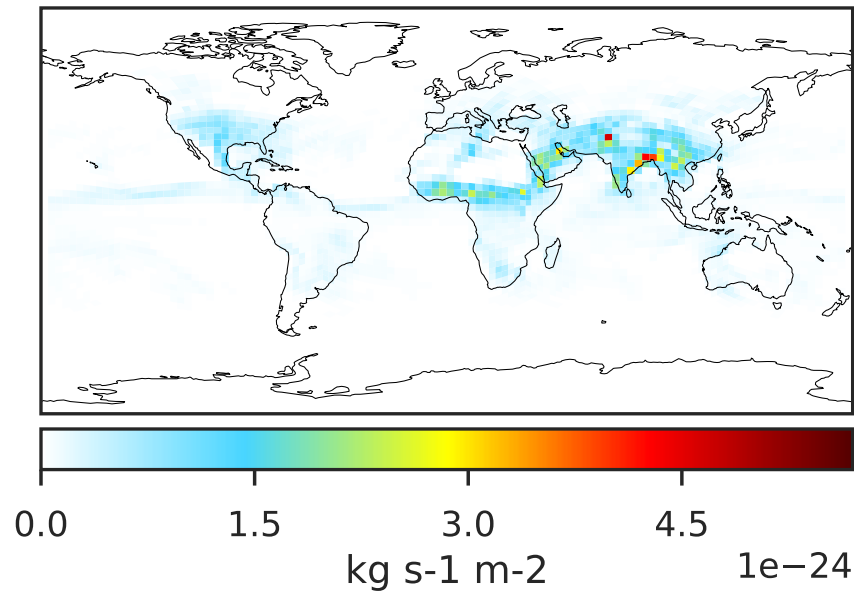
Ratio (1x1.25)  
Dev/Ref, Fixed Range



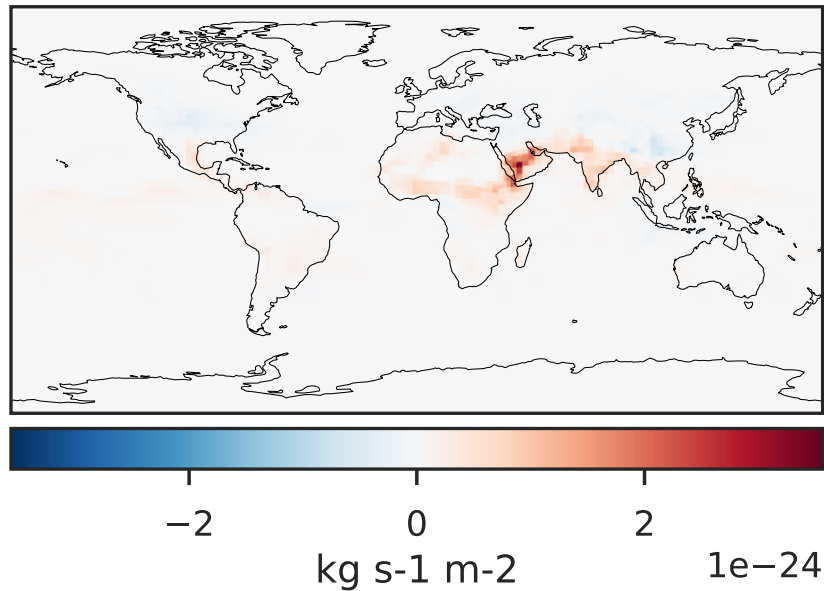
0.50 0.75 1.00 1.50 2.00  
unitless

# WetLossConv\_Be10s (Apr2019)

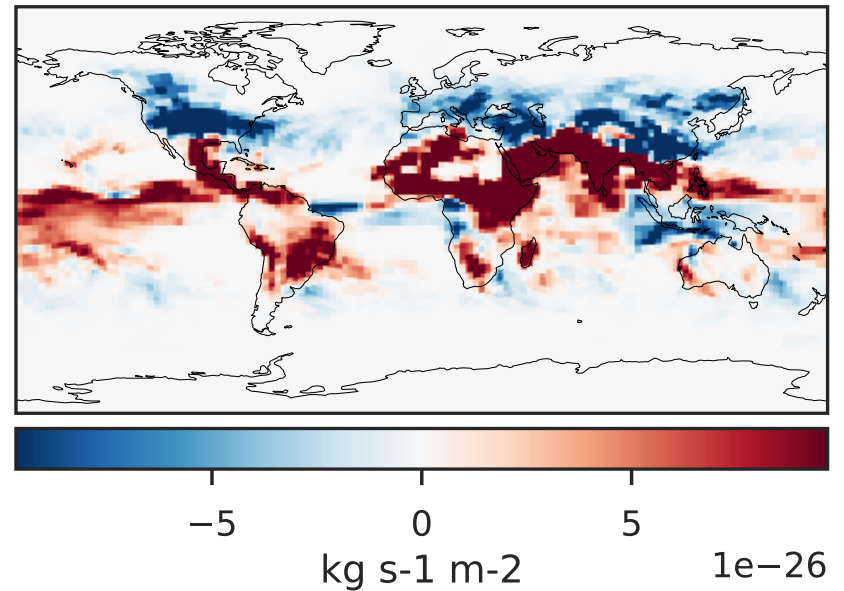
GCHP 14.2.2 using wind (Ref), Normalized by Area c30      GCHP 14.2.2 using mass flux (Dev), Normalized by Area c30



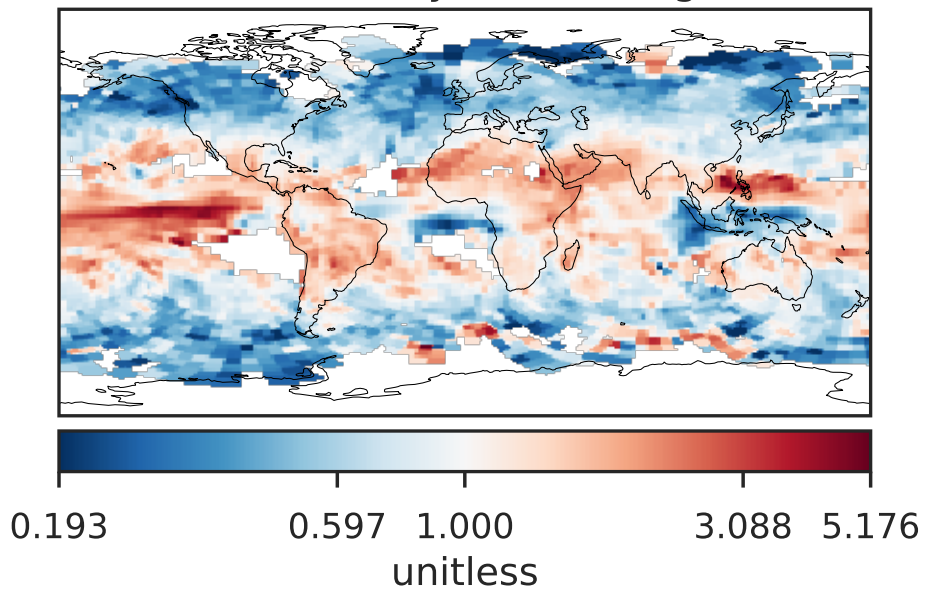
Difference (1x1.25)  
Dev - Ref, Dynamic Range



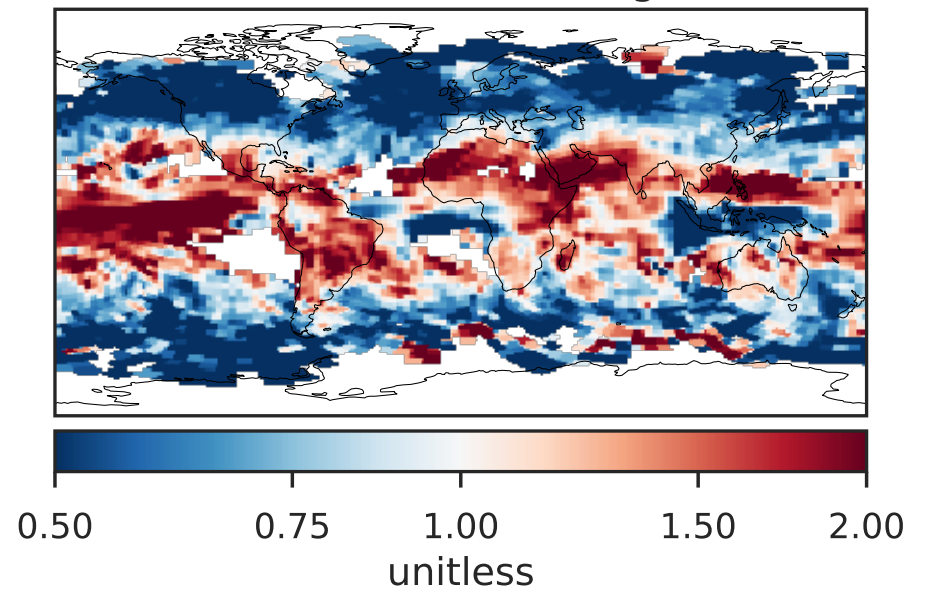
Difference (1x1.25)  
Dev - Ref, Restricted Range [5%,95%]



Ratio (1x1.25)  
Dev/Ref, Dynamic Range

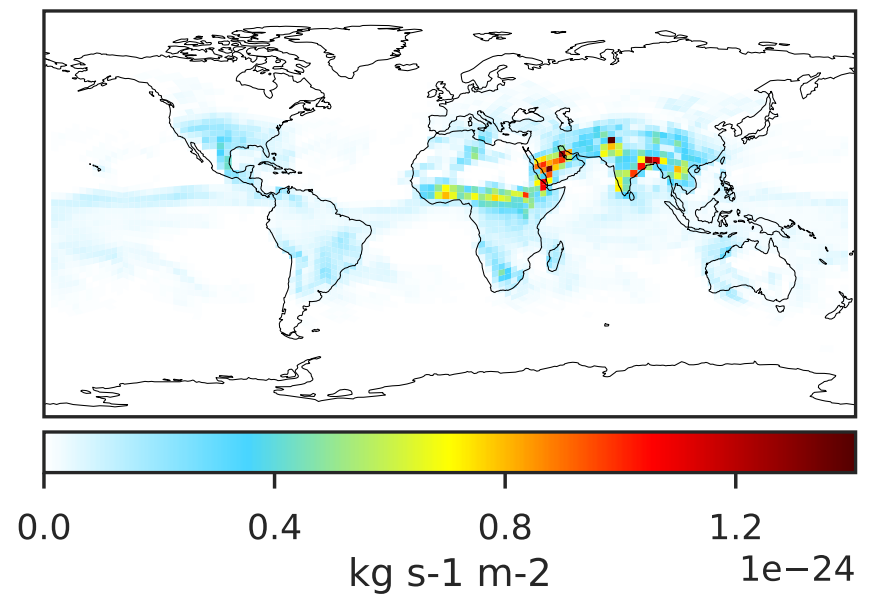
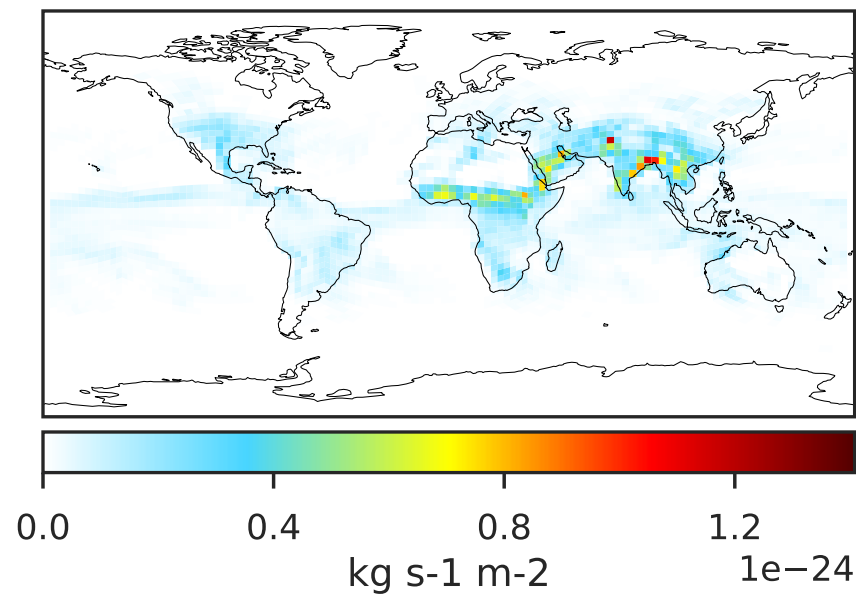


Ratio (1x1.25)  
Dev/Ref, Fixed Range

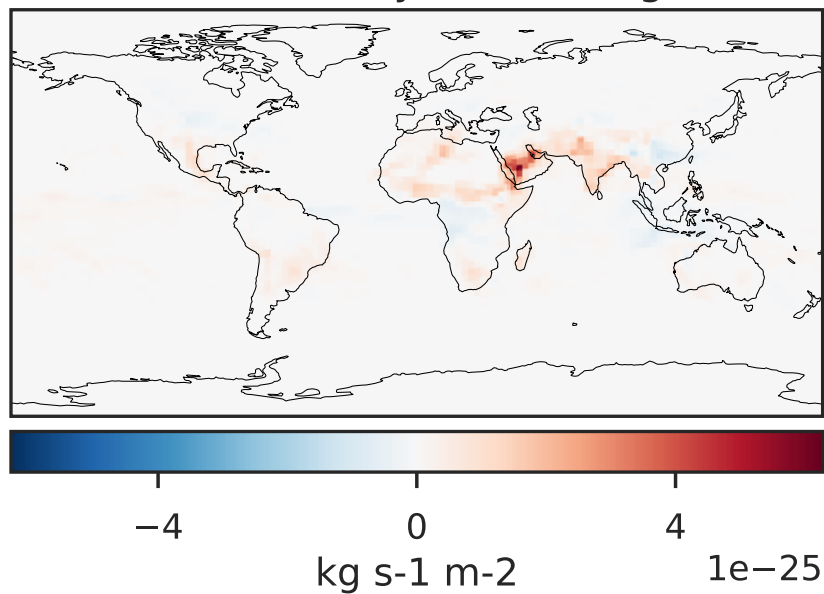


# WetLossConv\_Be7 (Apr2019)

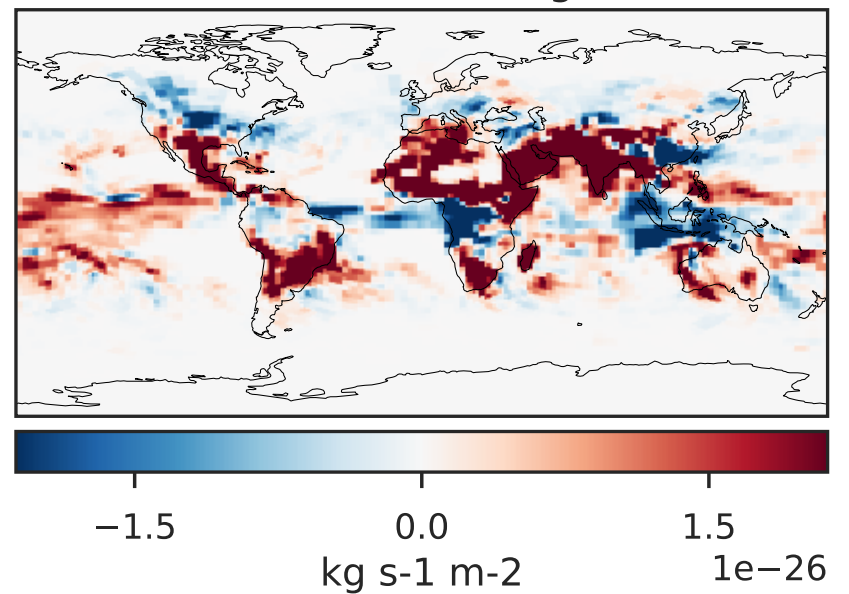
GCHP 14.2.2 using wind (Ref), Normalized by Area c30      GCHP 14.2.2 using mass flux (Dev), Normalized by Area c30



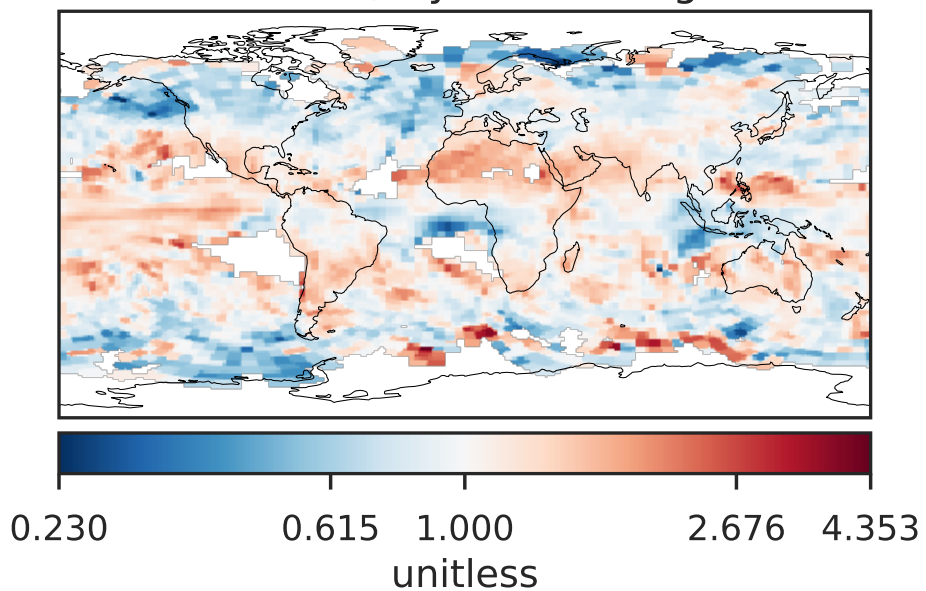
Difference (1x1.25)  
Dev - Ref, Dynamic Range



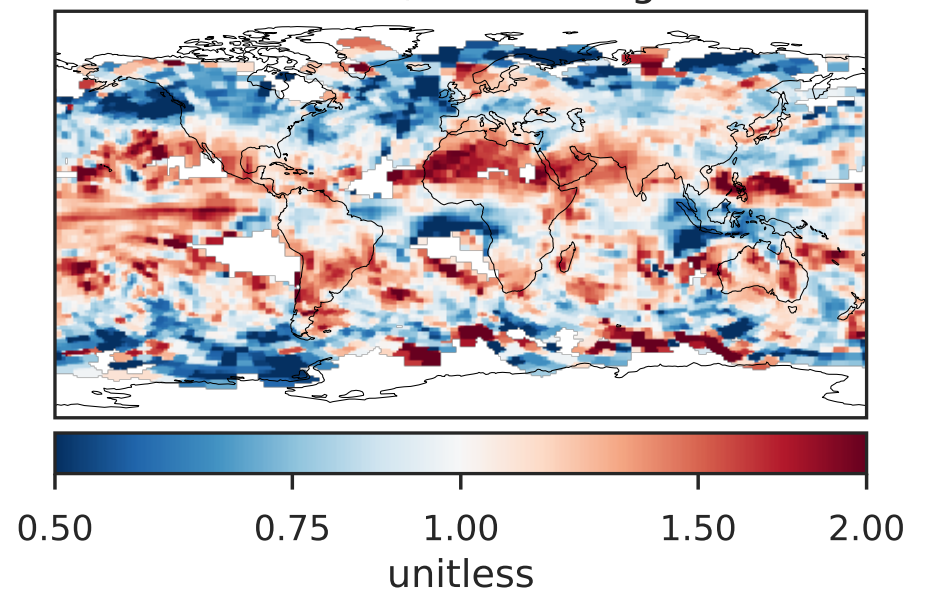
Difference (1x1.25)  
Dev - Ref, Restricted Range [5%,95%]



Ratio (1x1.25)  
Dev/Ref, Dynamic Range

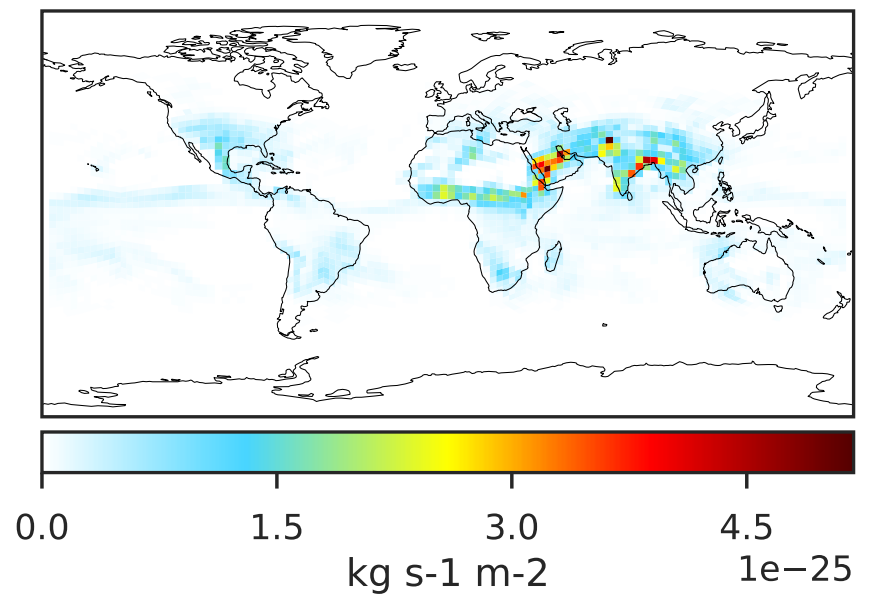
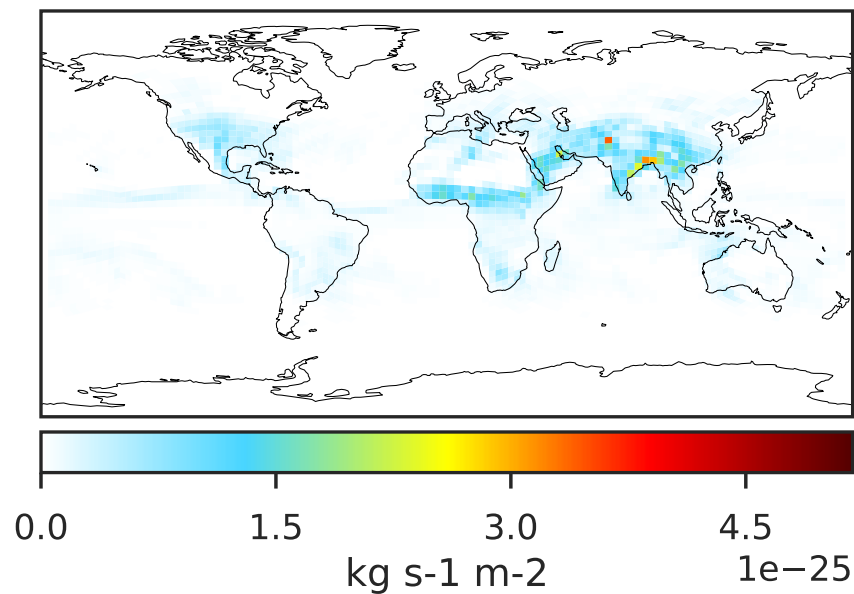


Ratio (1x1.25)  
Dev/Ref, Fixed Range

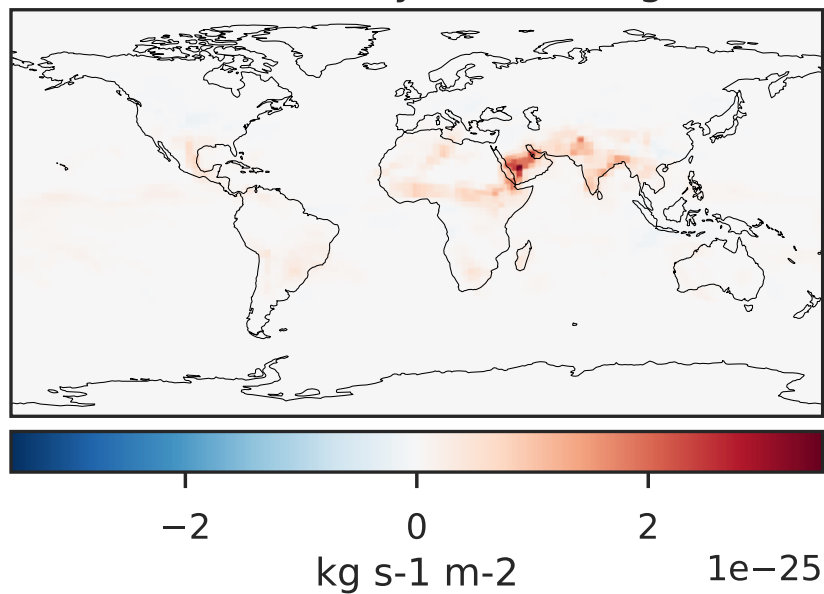


# WetLossConv\_Be7s (Apr2019)

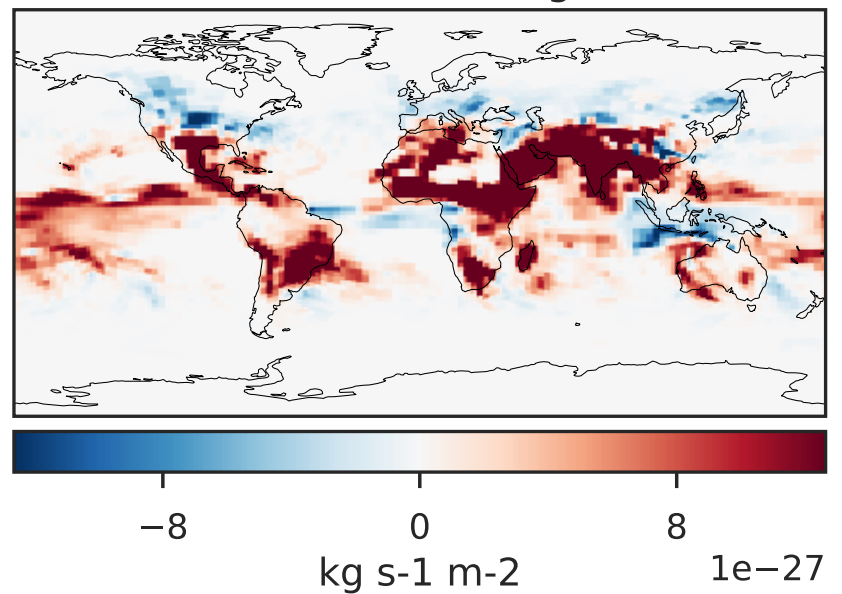
GCHP 14.2.2 using wind (Ref), Normalized by Area  
GCHP 14.2.2 using mass flux (Dev), Normalized by Area



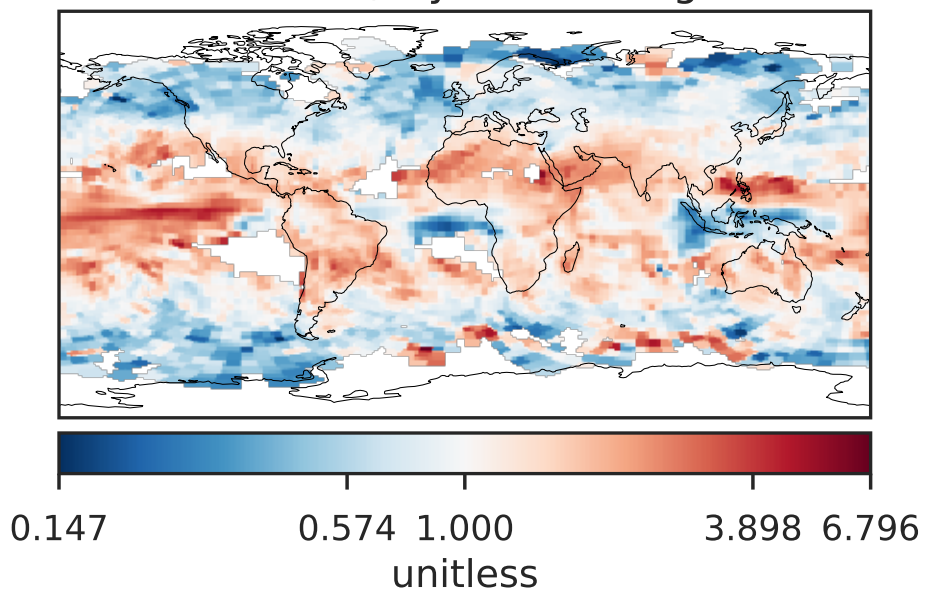
Difference (1x1.25)  
Dev - Ref, Dynamic Range



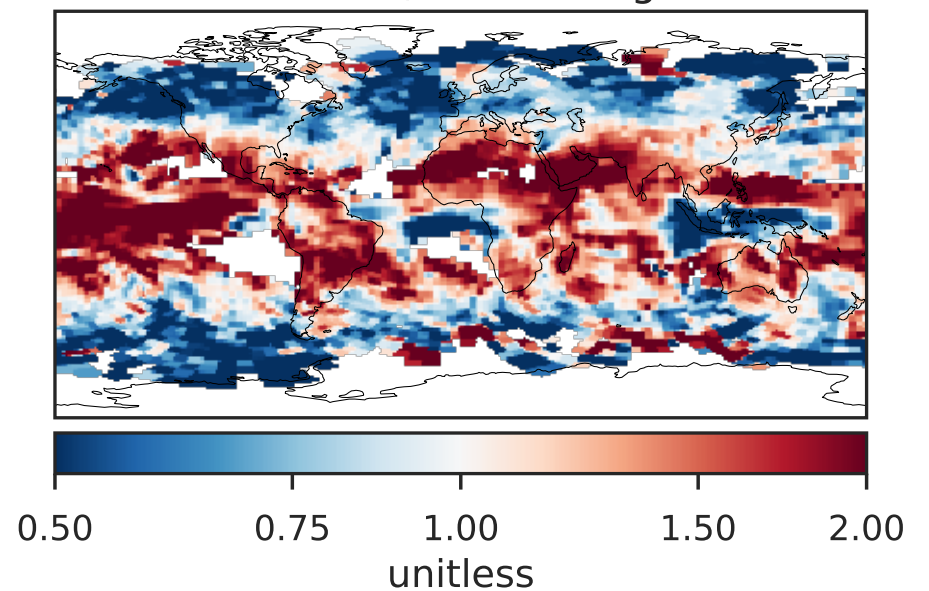
Difference (1x1.25)  
Dev - Ref, Restricted Range [5%,95%]



Ratio (1x1.25)  
Dev/Ref, Dynamic Range



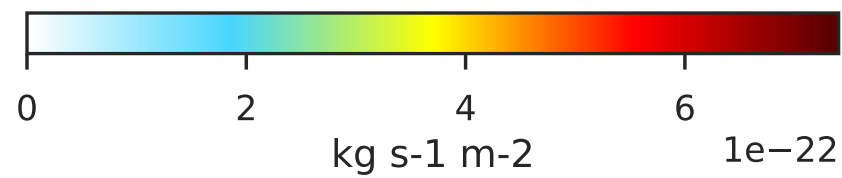
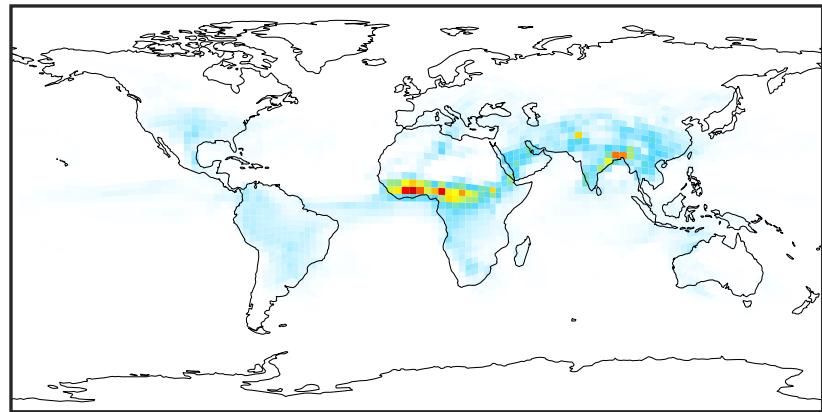
Ratio (1x1.25)  
Dev/Ref, Fixed Range



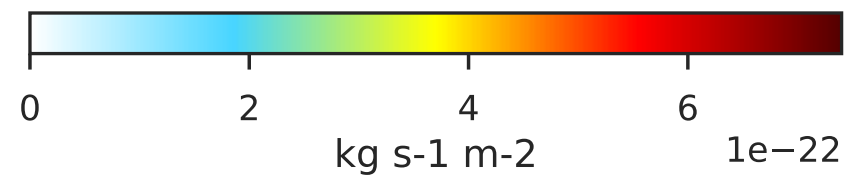
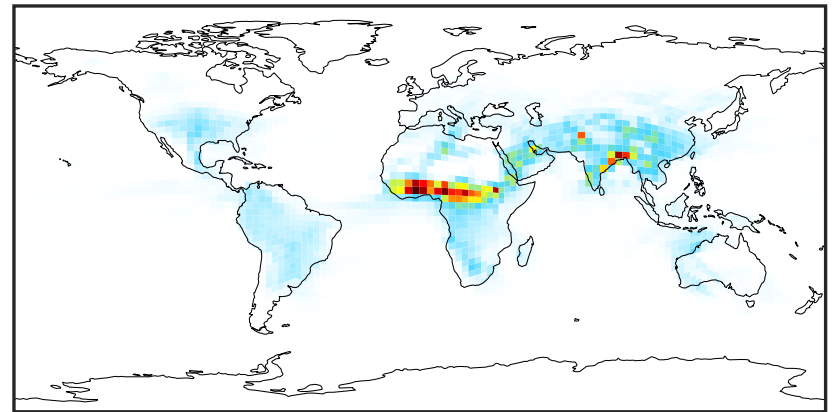
# WetLossConv\_Pb210 (Apr2019)

GCHP 14.2.2 using wind (Ref), Normalized by Area  
GCHP 14.2.2 using mass flux (Dev), Normalized by Area

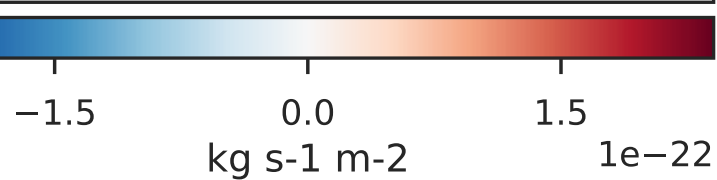
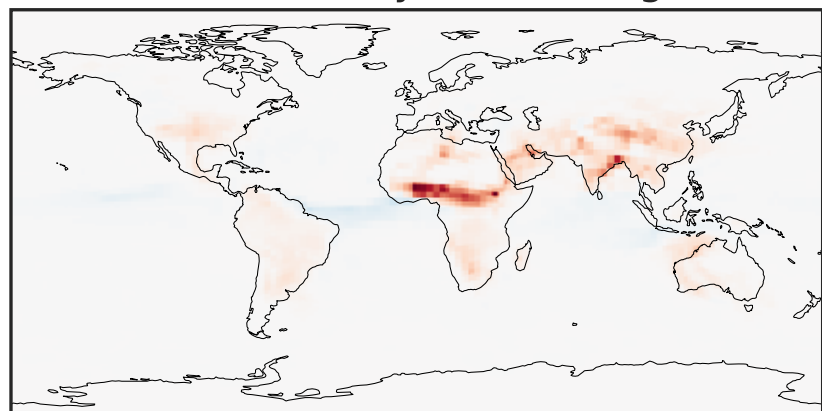
c30



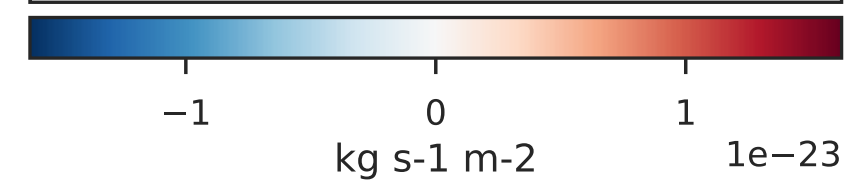
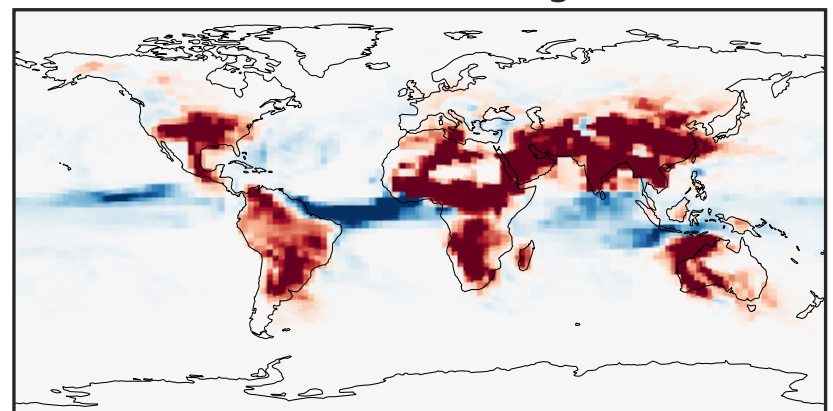
c30



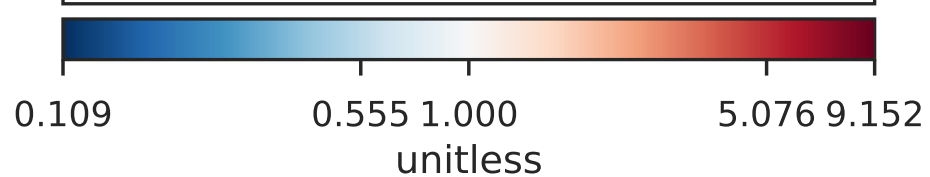
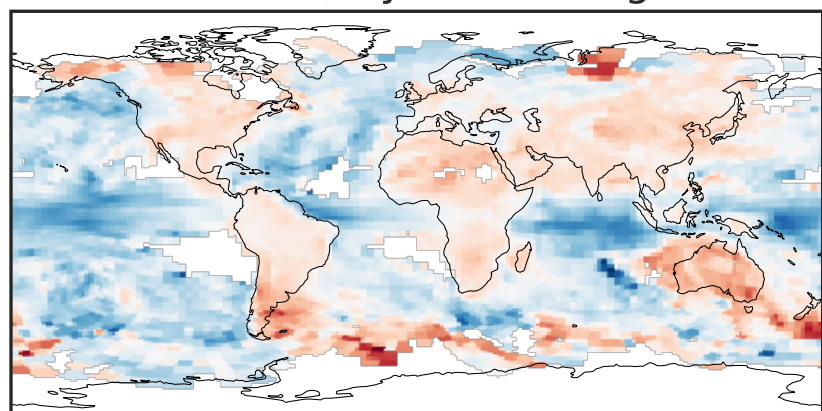
Difference (1x1.25)  
Dev - Ref, Dynamic Range



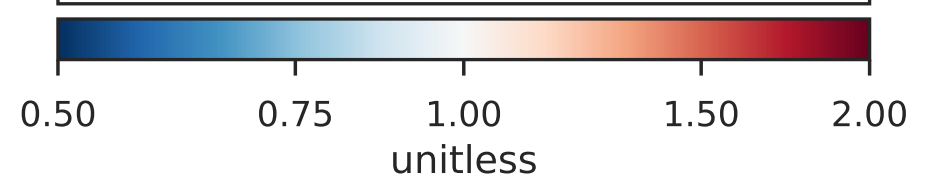
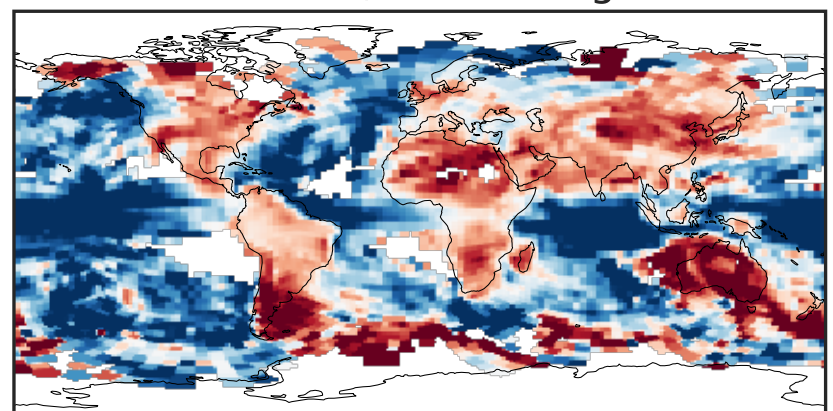
Difference (1x1.25)  
Dev - Ref, Restricted Range [5%,95%]



Ratio (1x1.25)  
Dev/Ref, Dynamic Range

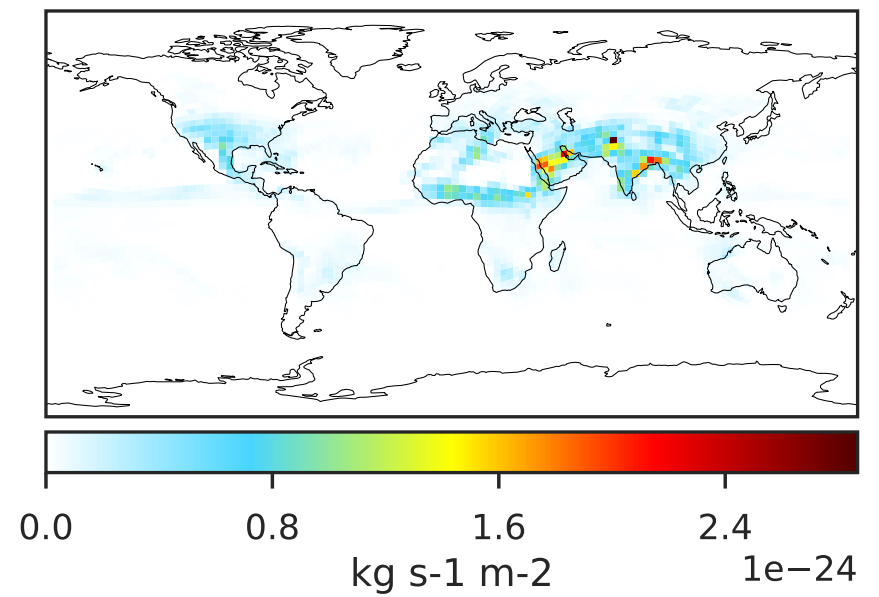
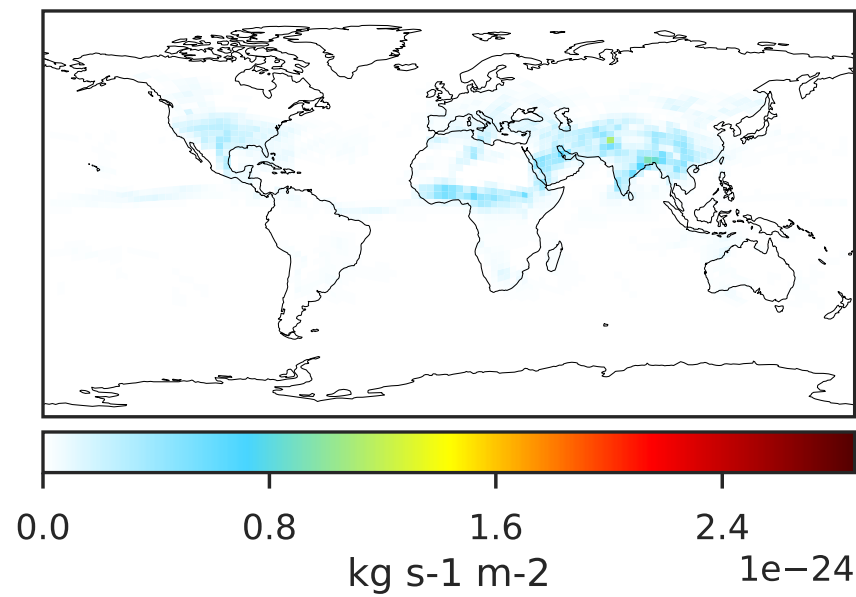


Ratio (1x1.25)  
Dev/Ref, Fixed Range

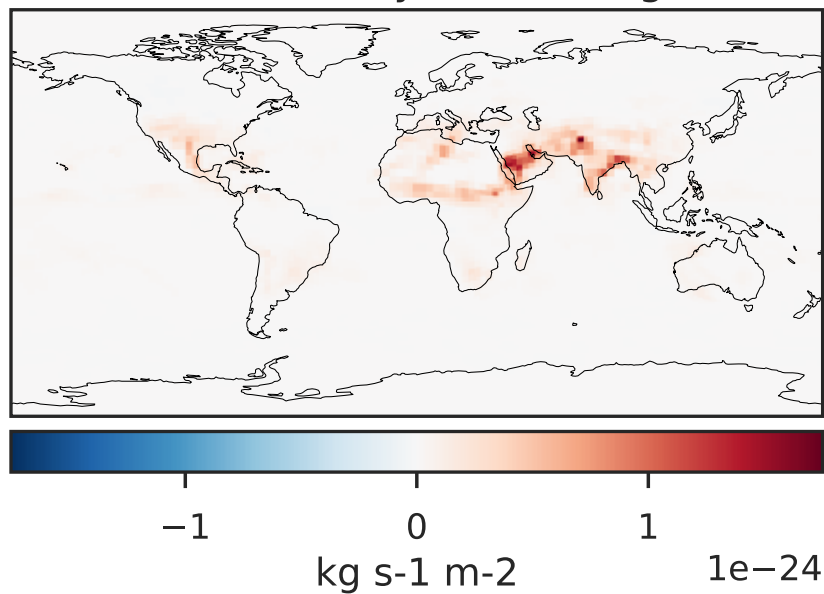


# WetLossConv\_Pb210s (Apr2019)

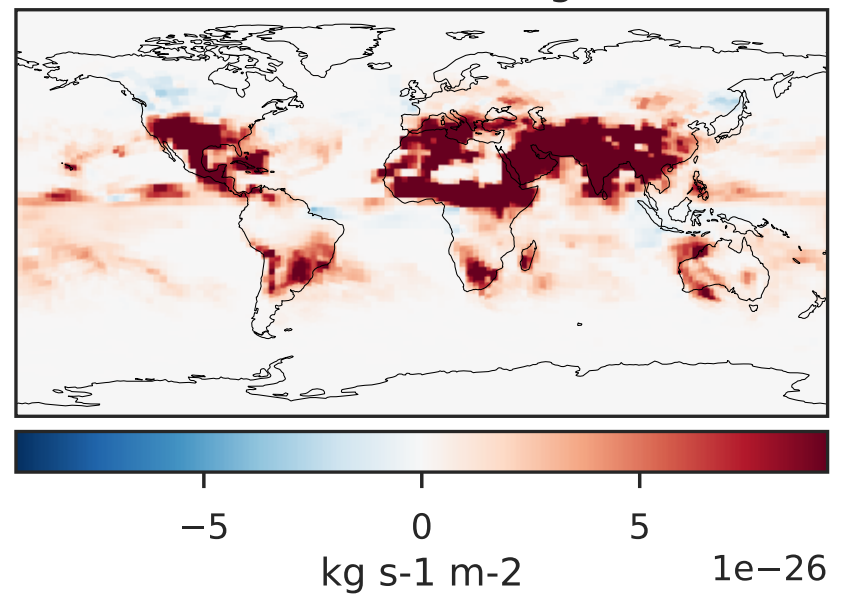
GCHP 14.2.2 using wind (Ref), Normalized by Area  
GCHP 14.2.2 using mass flux (Dev), Normalized by Area



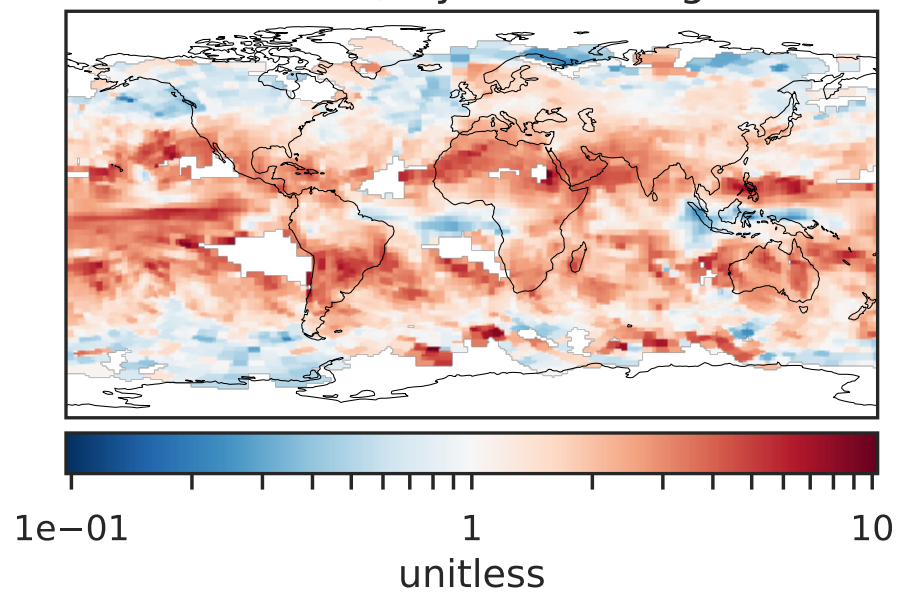
Difference (1x1.25)  
Dev - Ref, Dynamic Range



Difference (1x1.25)  
Dev - Ref, Restricted Range [5%,95%]



Ratio (1x1.25)  
Dev/Ref, Dynamic Range



Ratio (1x1.25)  
Dev/Ref, Fixed Range

