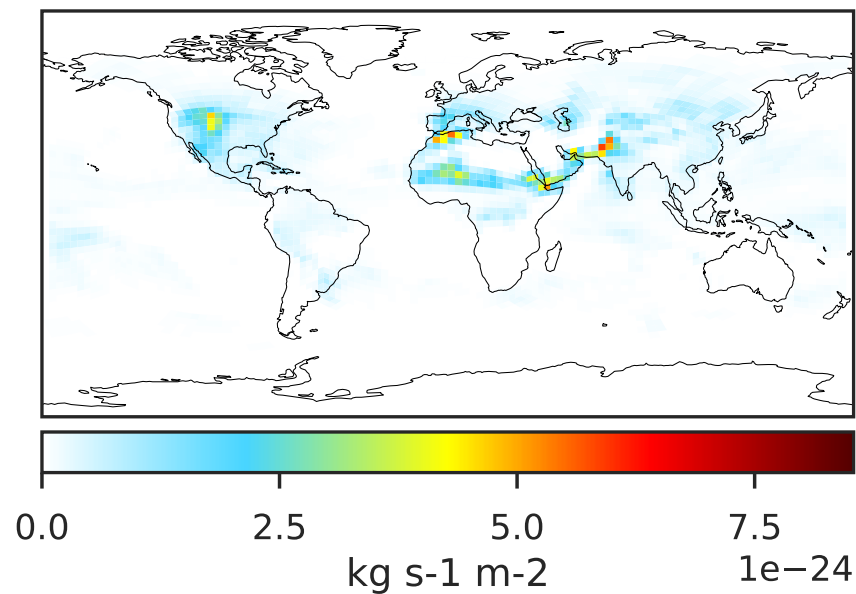
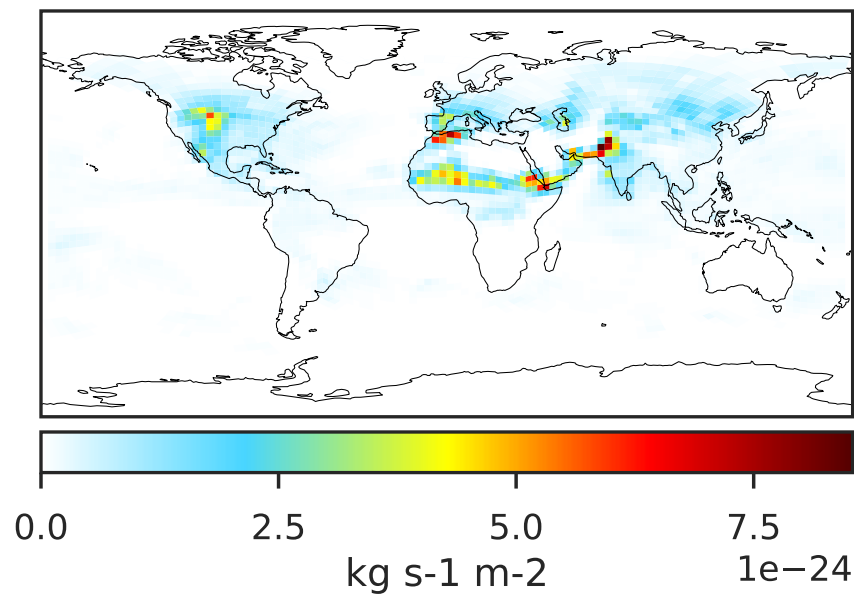
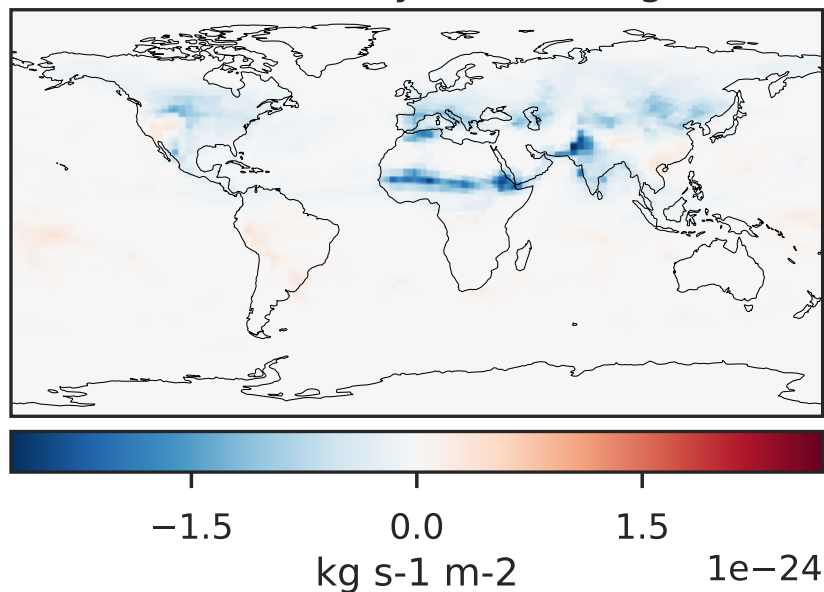


WetLossConv_Be10 (Jul2019)

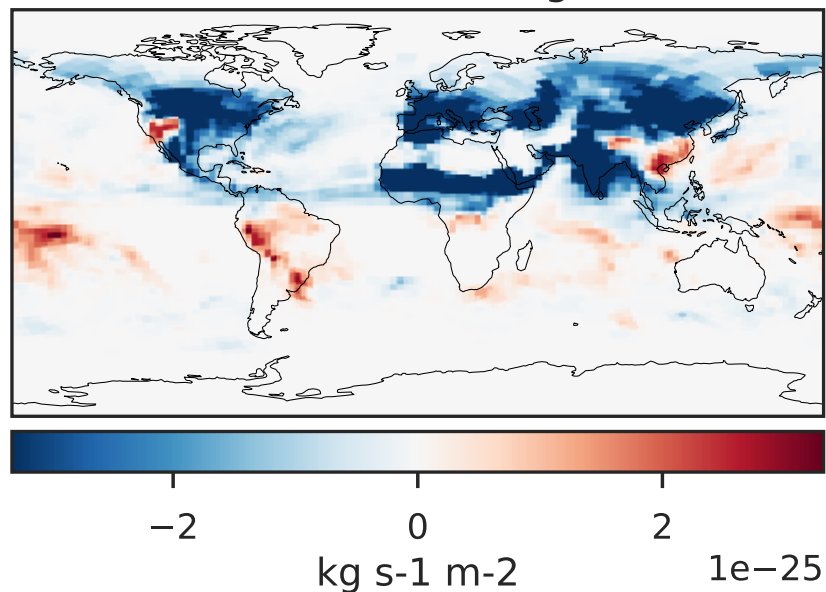
GCHP 14.2.2 using wind (Ref), Normalized by Area
GCHP 14.2.2 using mass flux (Dev), Normalized by Area



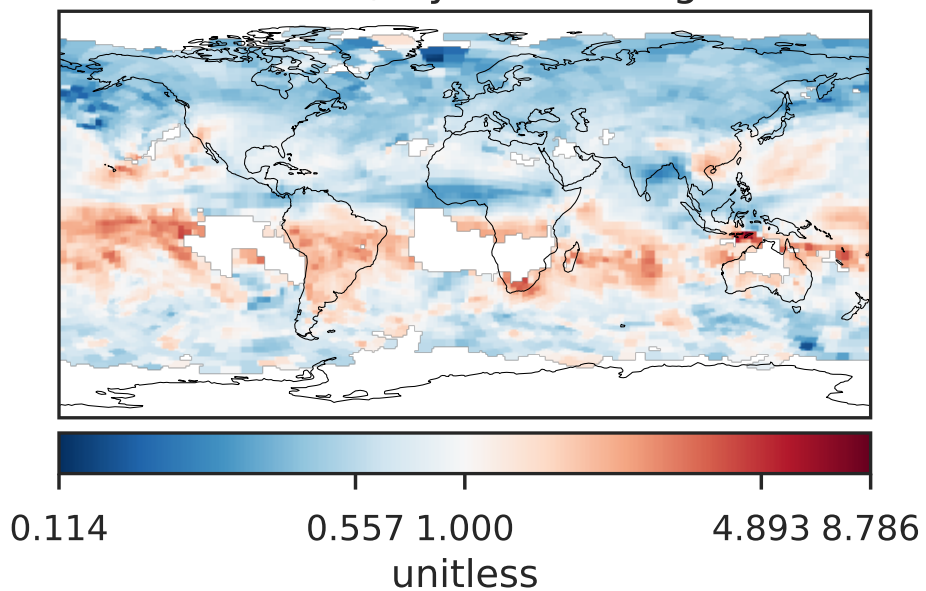
Difference (1x1.25)
Dev - Ref, Dynamic Range



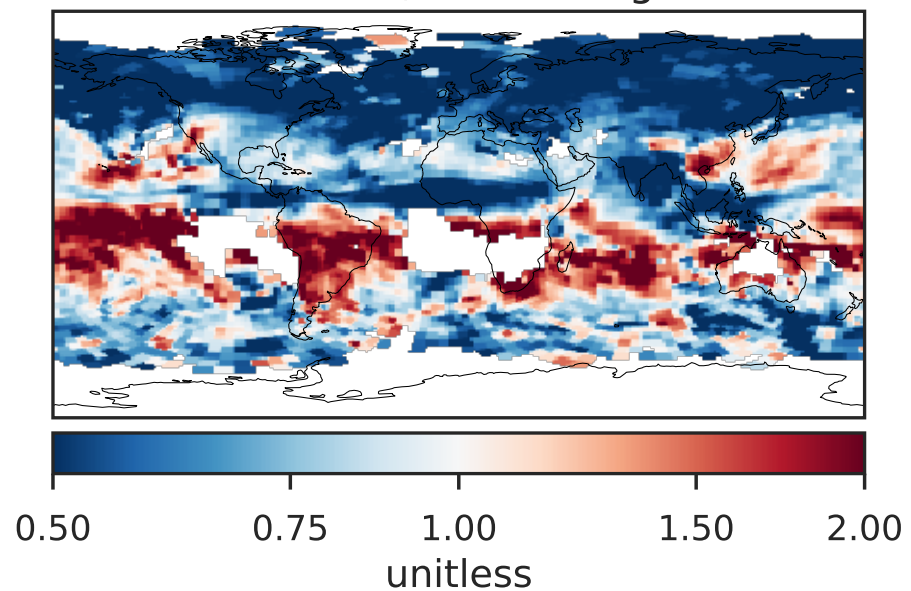
Difference (1x1.25)
Dev - Ref, Restricted Range [5%,95%]



Ratio (1x1.25)
Dev/Ref, Dynamic Range

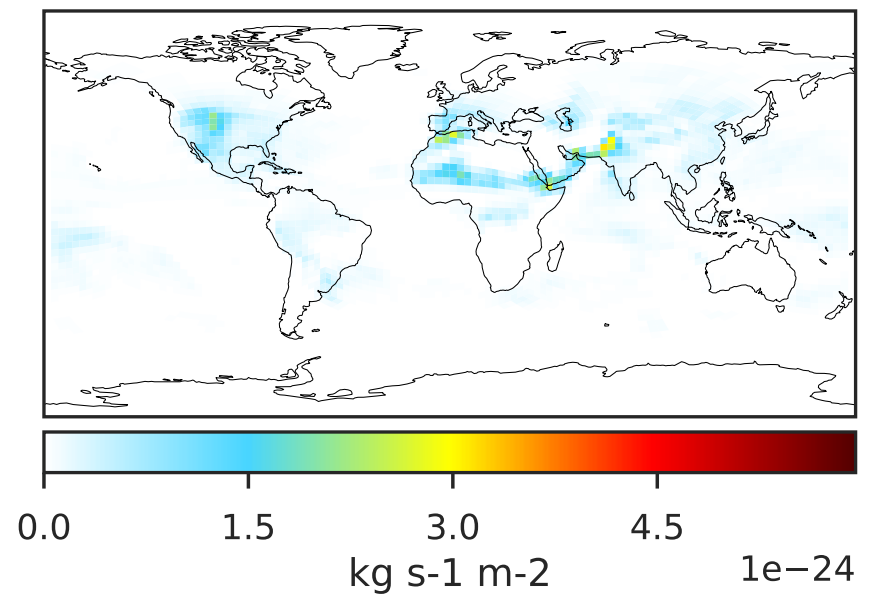
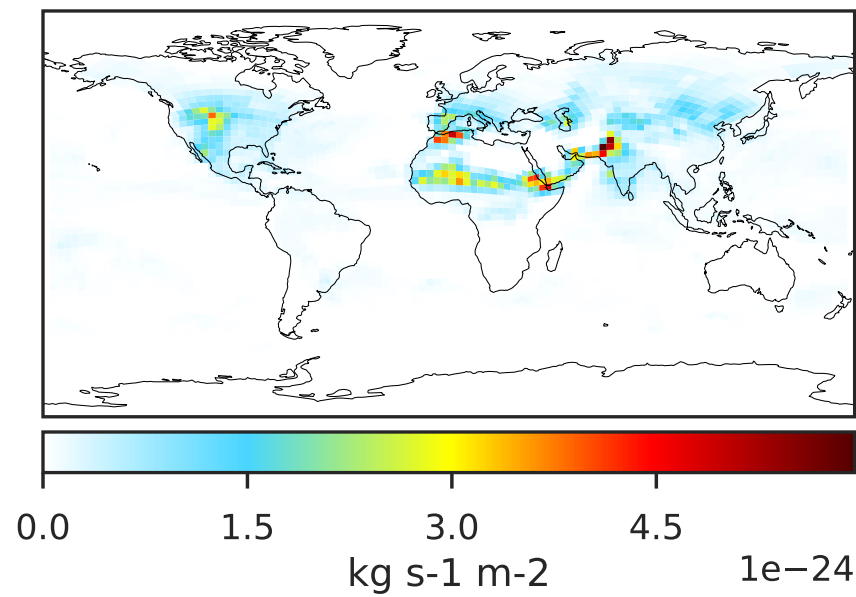


Ratio (1x1.25)
Dev/Ref, Fixed Range

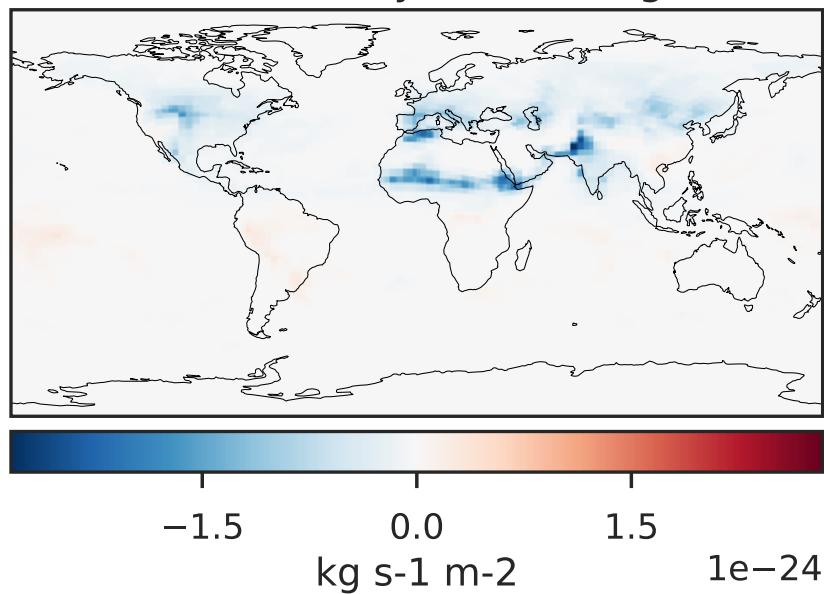


WetLossConv_Be10s (Jul2019)

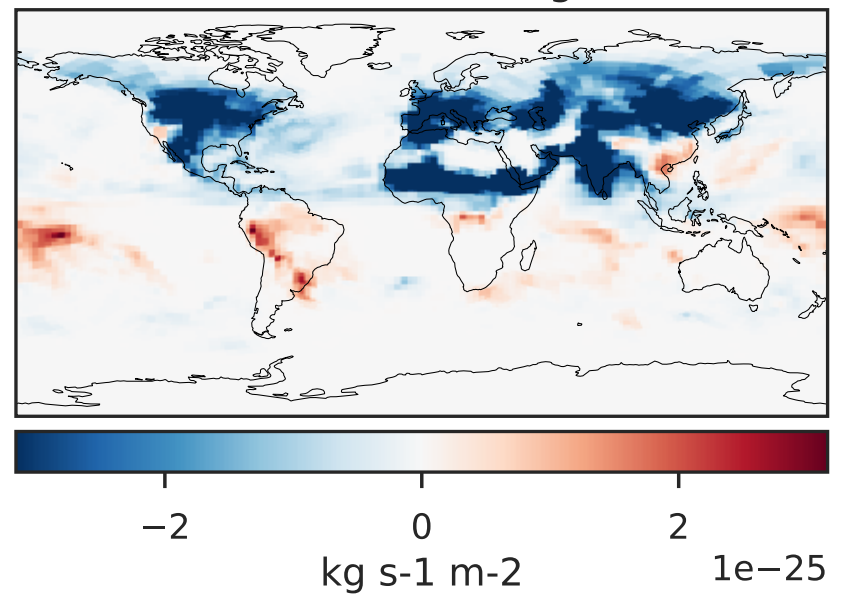
GCHP 14.2.2 using wind (Ref), Normalized by Area
GCHP 14.2.2 using mass flux (Dev), Normalized by Area



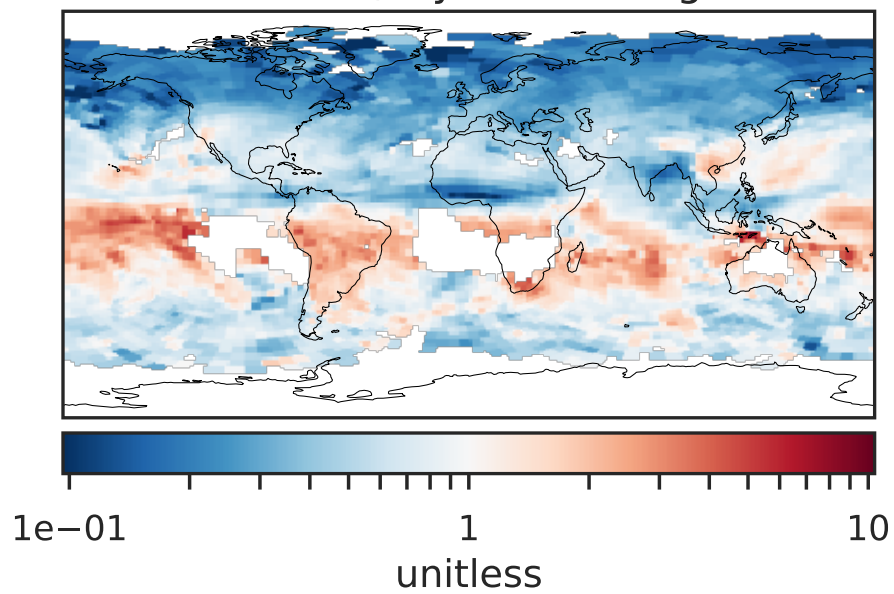
Difference (1x1.25)
Dev - Ref, Dynamic Range



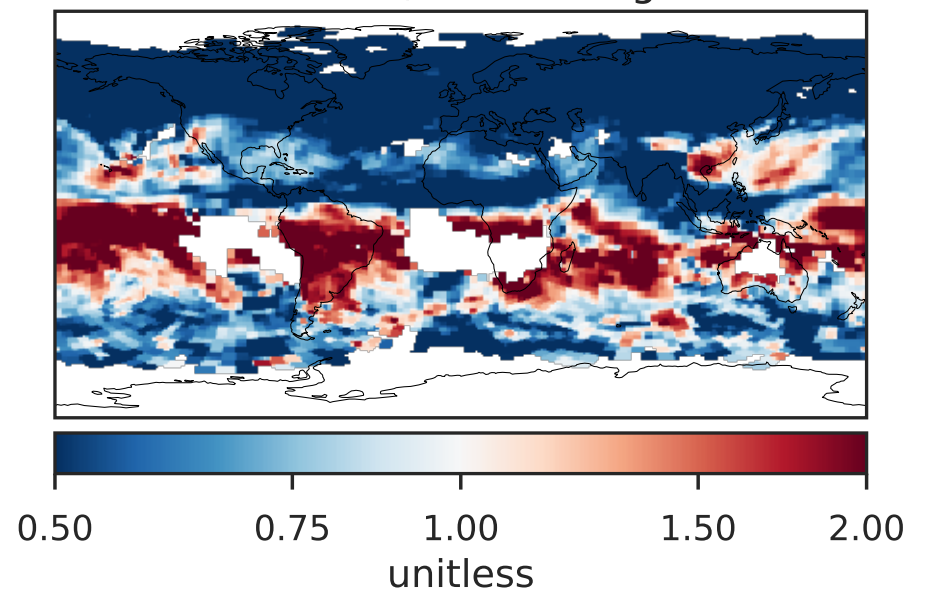
Difference (1x1.25)
Dev - Ref, Restricted Range [5%,95%]



Ratio (1x1.25)
Dev/Ref, Dynamic Range

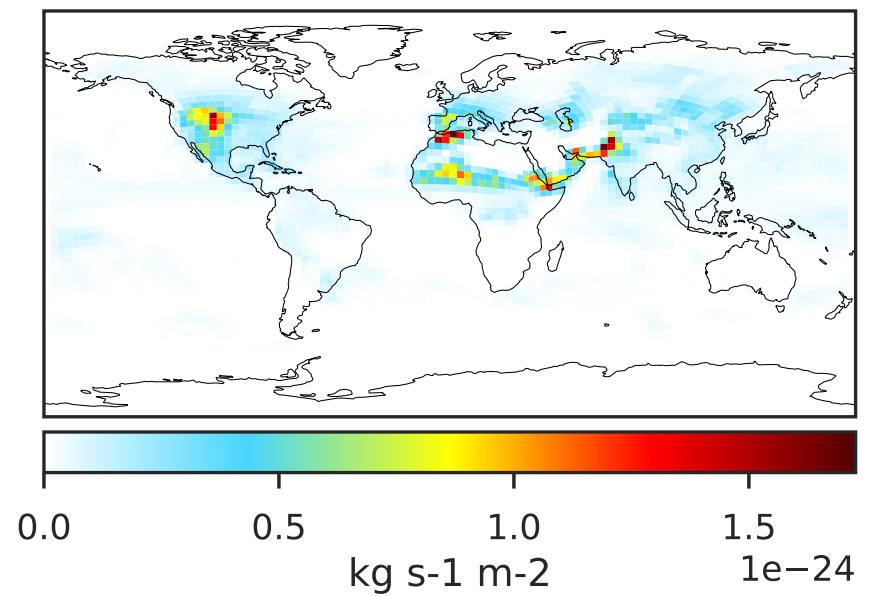
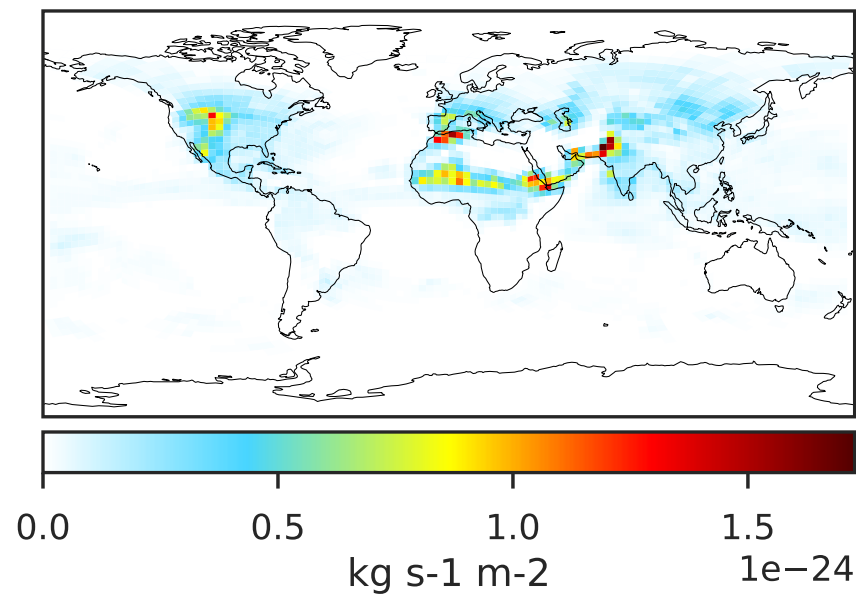


Ratio (1x1.25)
Dev/Ref, Fixed Range

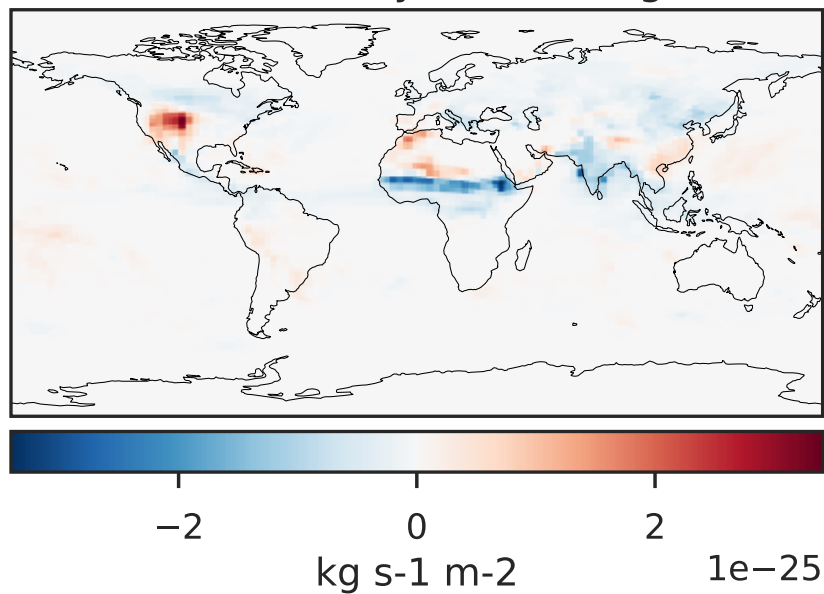


WetLossConv_Be7 (Jul2019)

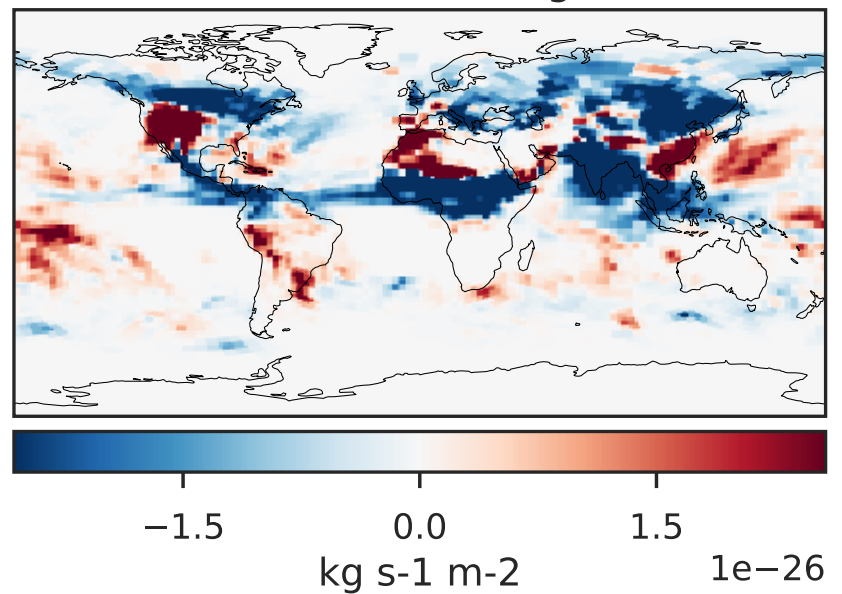
GCHP 14.2.2 using wind (Ref), Normalized by Area
GCHP 14.2.2 using mass flux (Dev), Normalized by Area



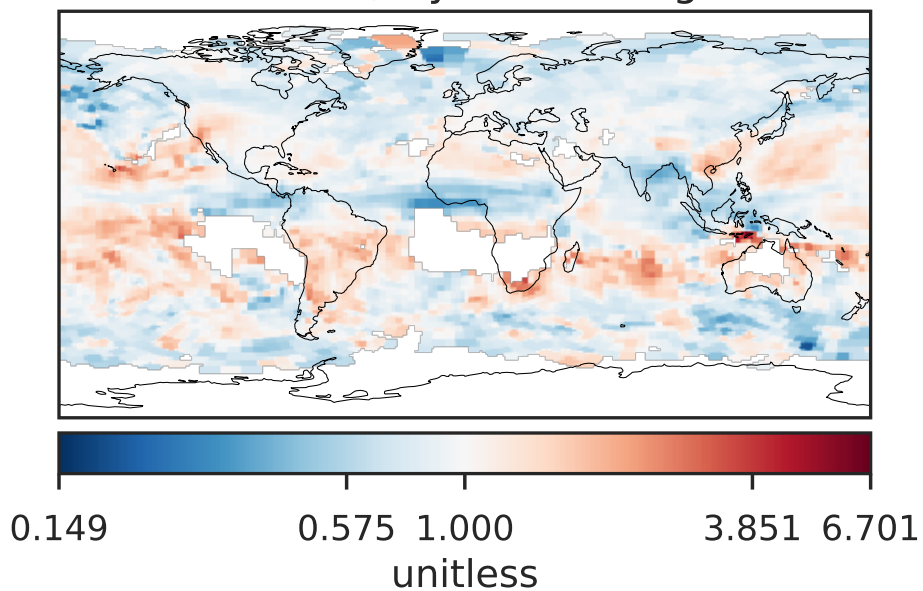
Difference (1x1.25)
Dev - Ref, Dynamic Range



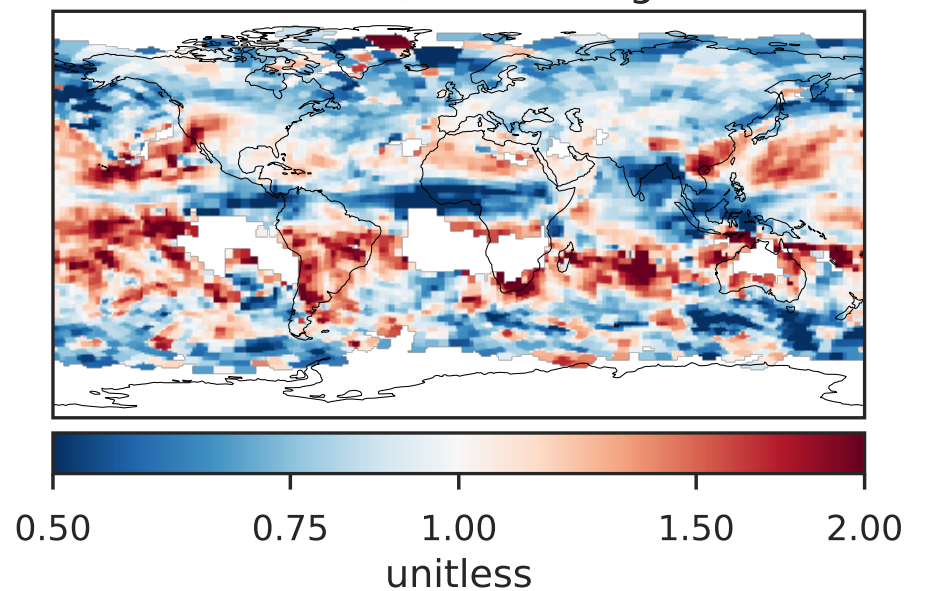
Difference (1x1.25)
Dev - Ref, Restricted Range [5%,95%]



Ratio (1x1.25)
Dev/Ref, Dynamic Range

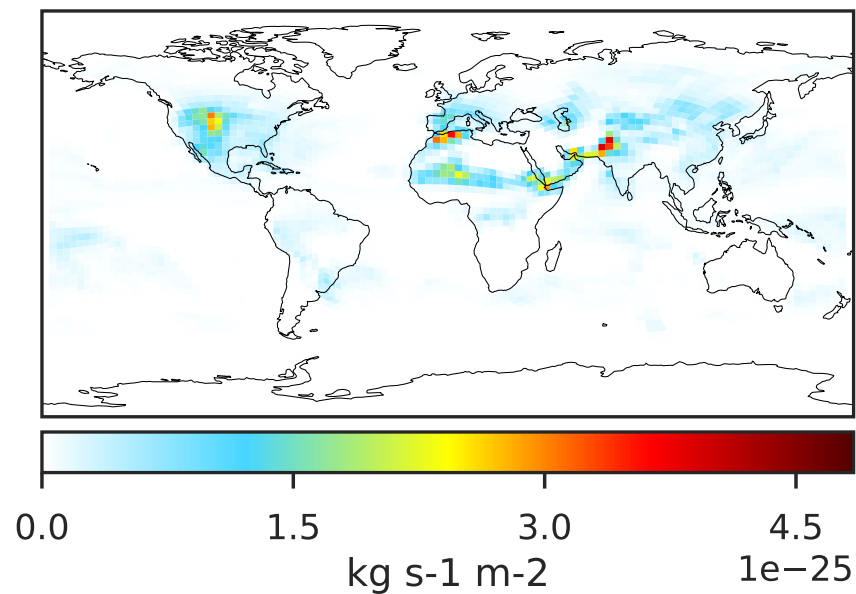
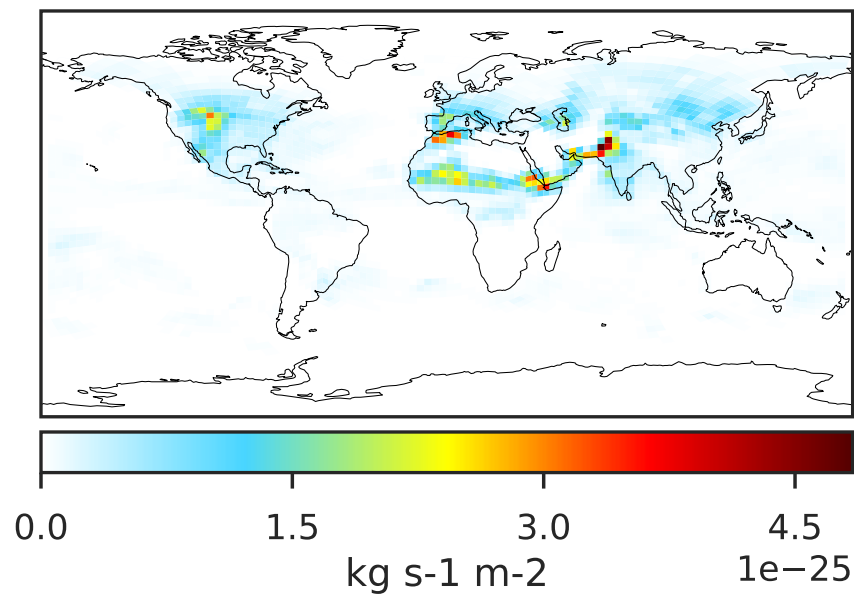


Ratio (1x1.25)
Dev/Ref, Fixed Range

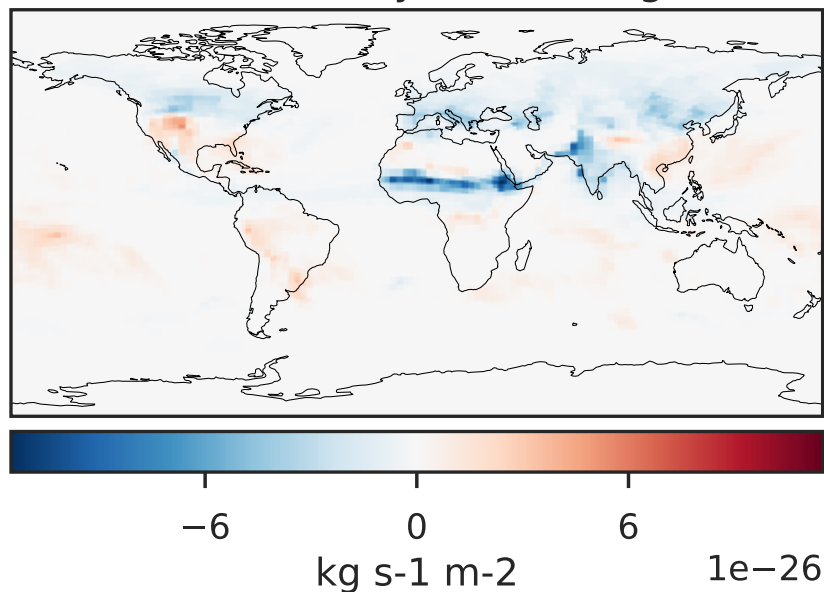


WetLossConv_Be7s (Jul2019)

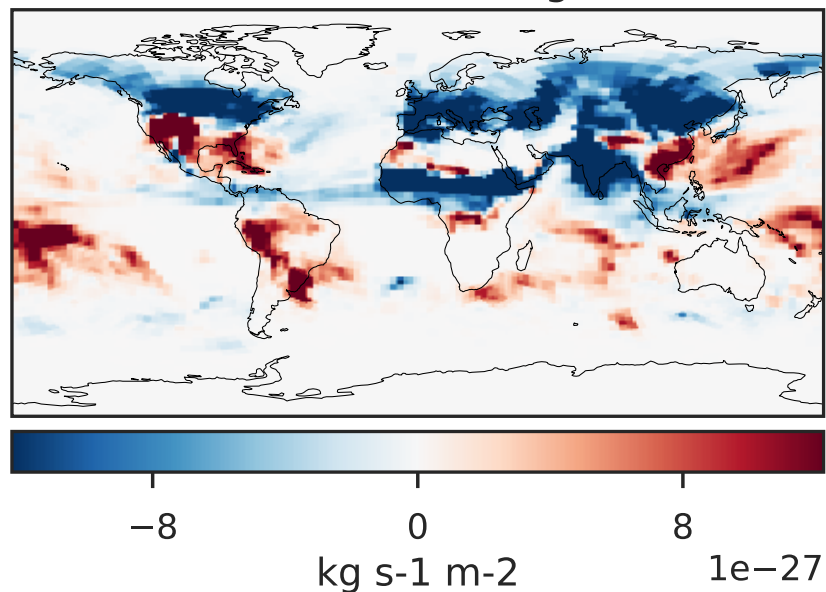
GCHP 14.2.2 using wind (Ref), Normalized by Area
GCHP 14.2.2 using mass flux (Dev), Normalized by Area



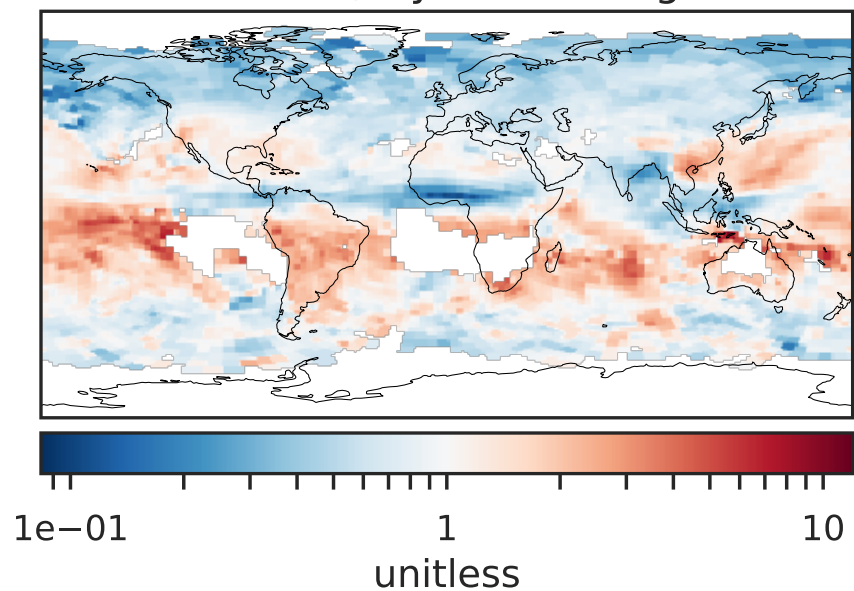
Difference (1x1.25)
Dev - Ref, Dynamic Range



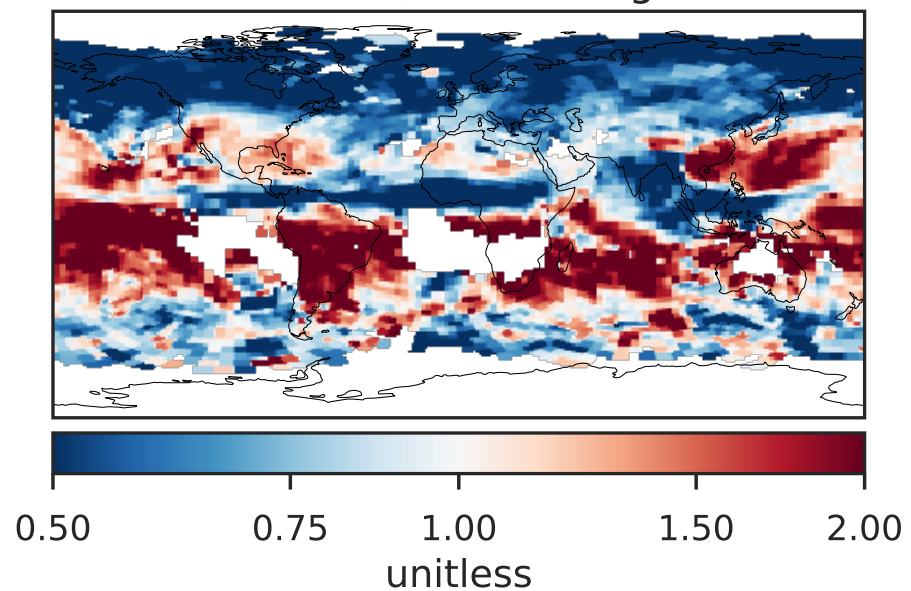
Difference (1x1.25)
Dev - Ref, Restricted Range [5%,95%]



Ratio (1x1.25)
Dev/Ref, Dynamic Range

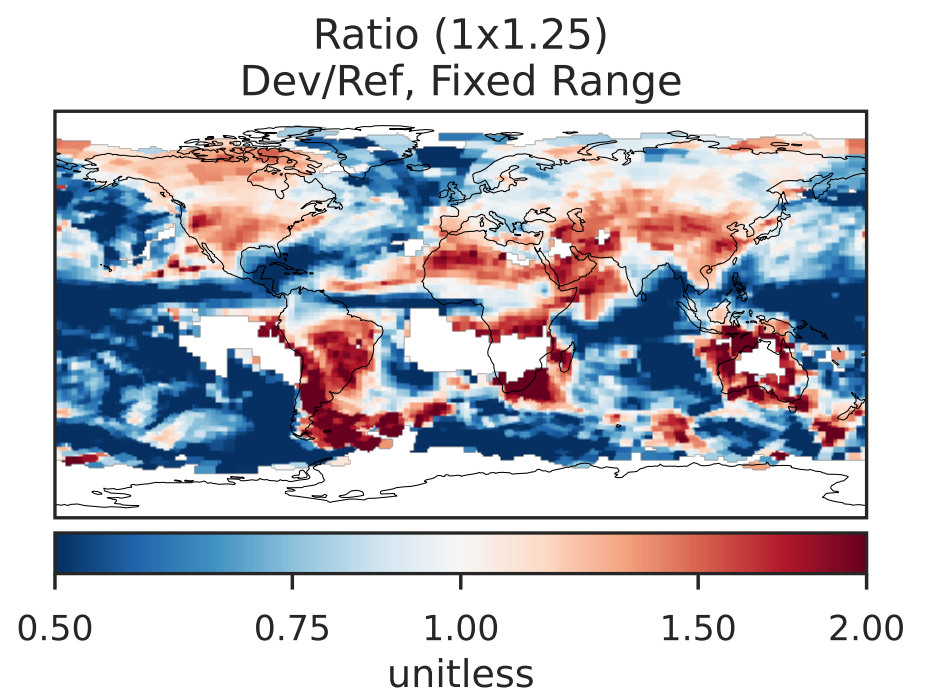
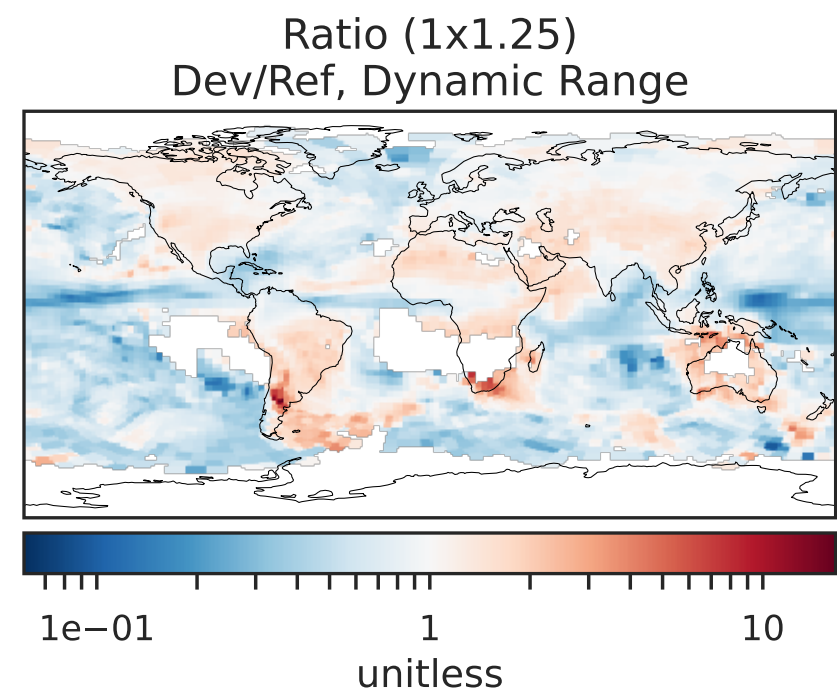
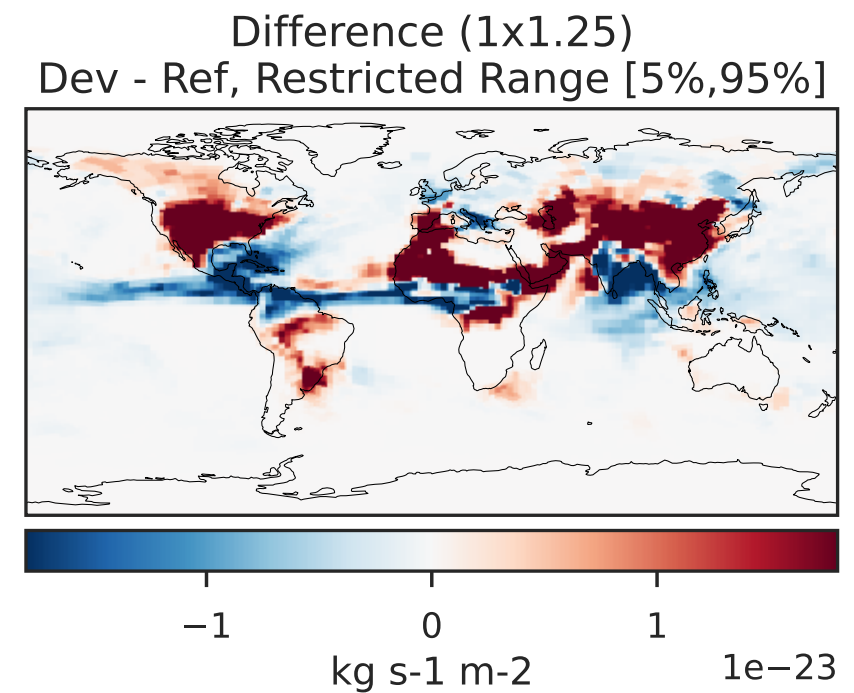
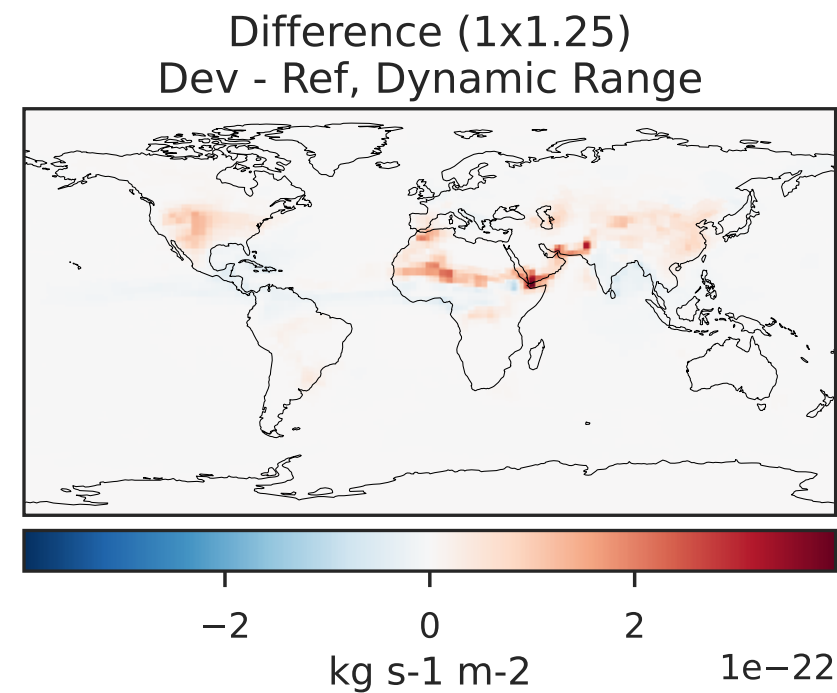
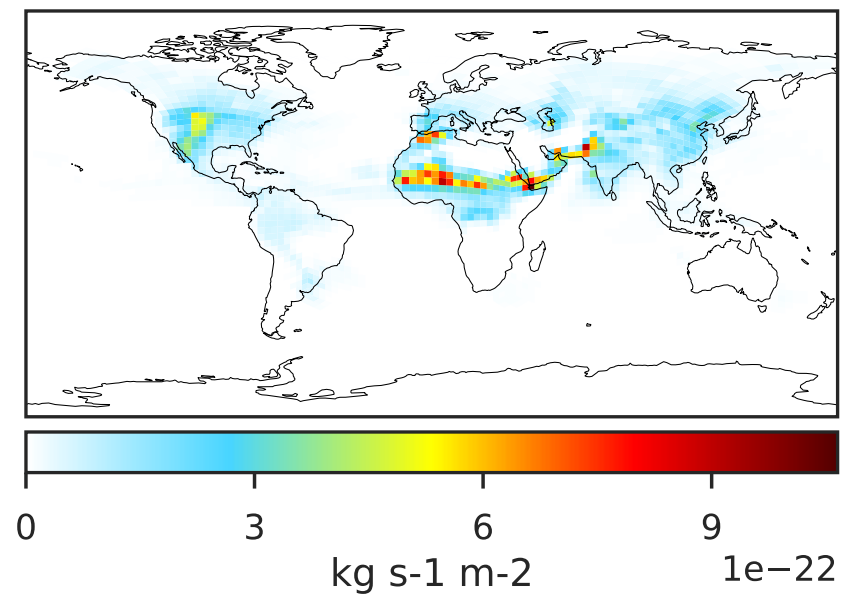
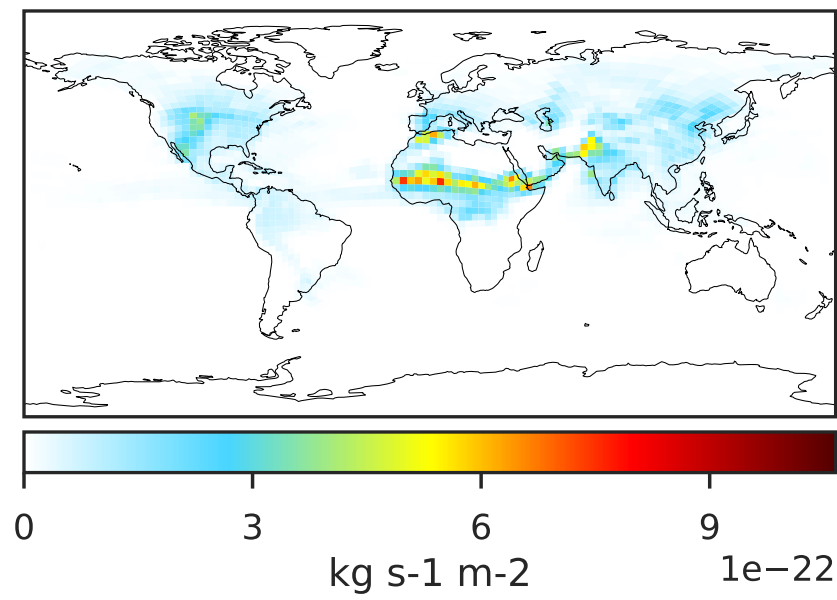


Ratio (1x1.25)
Dev/Ref, Fixed Range



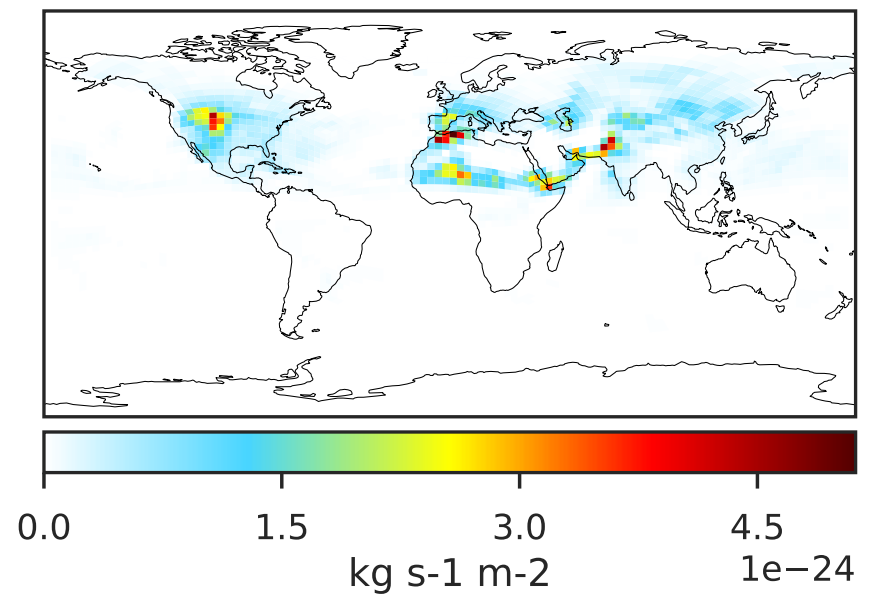
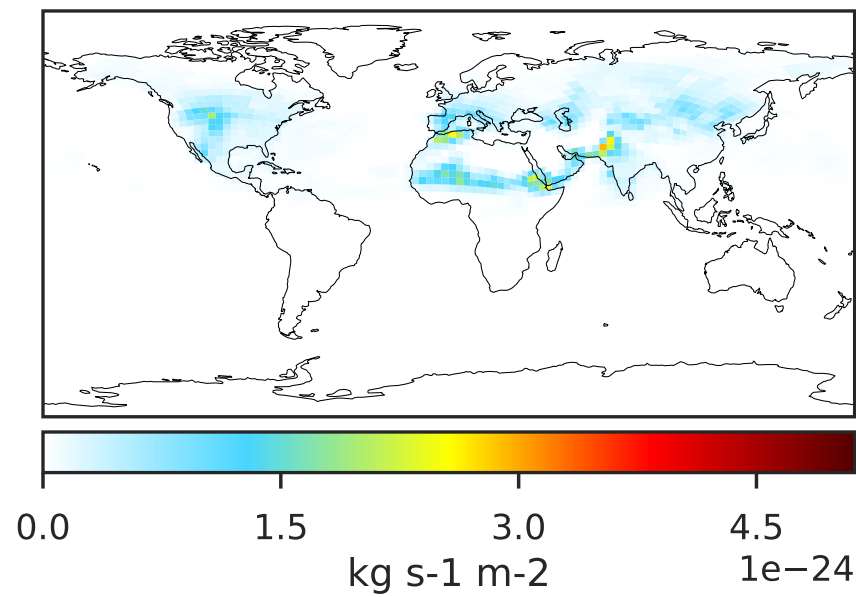
WetLossConv_Pb210 (Jul2019)

GCHP 14.2.2 using wind (Ref), Normalized by Area
GCHP 14.2.2 using mass flux (Dev), Normalized by Area

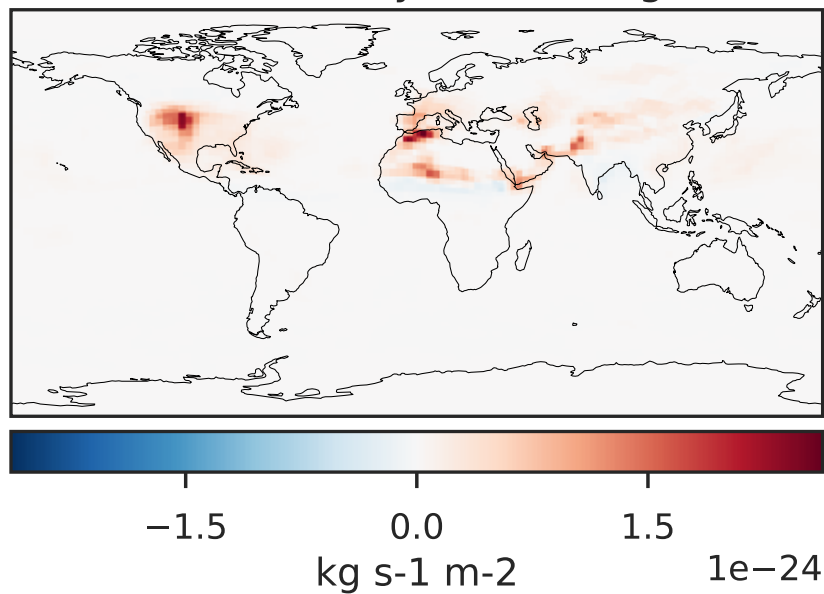


WetLossConv_Pb210s (Jul2019)

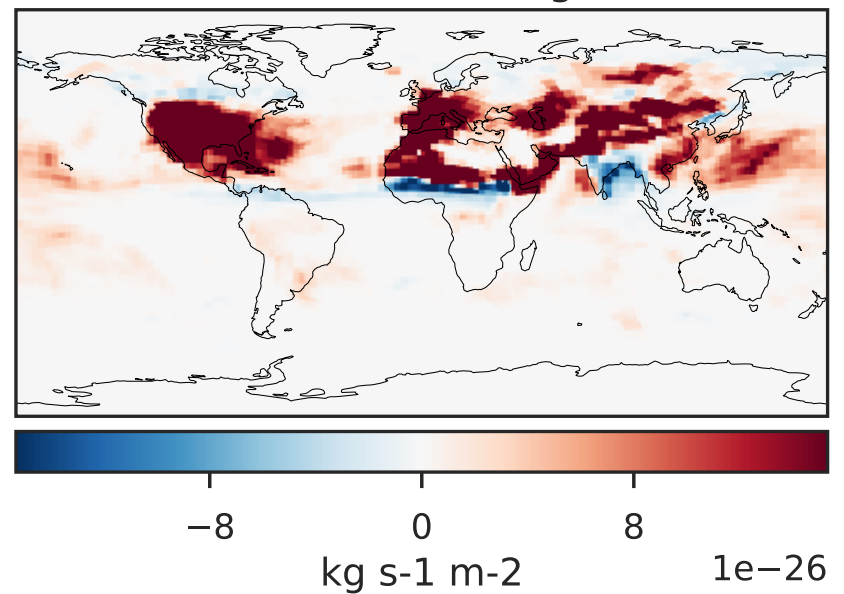
GCHP 14.2.2 using wind (Ref), Normalized by Area
GCHP 14.2.2 using mass flux (Dev), Normalized by Area



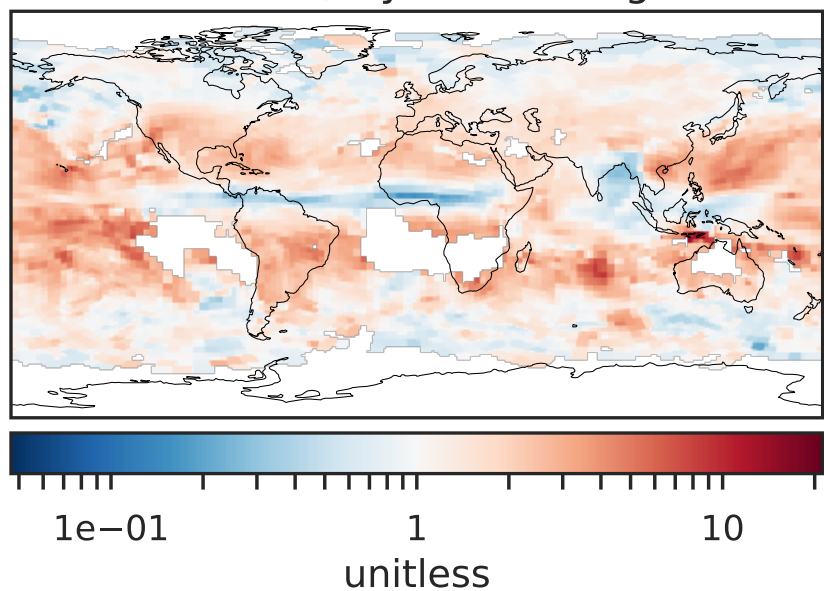
Difference (1x1.25)
Dev - Ref, Dynamic Range



Difference (1x1.25)
Dev - Ref, Restricted Range [5%,95%]



Ratio (1x1.25)
Dev/Ref, Dynamic Range



Ratio (1x1.25)
Dev/Ref, Fixed Range

