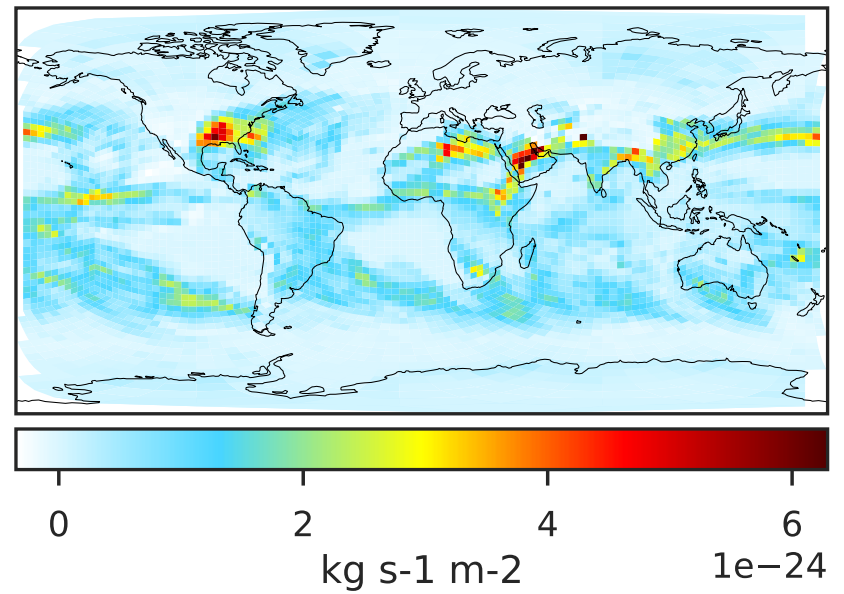
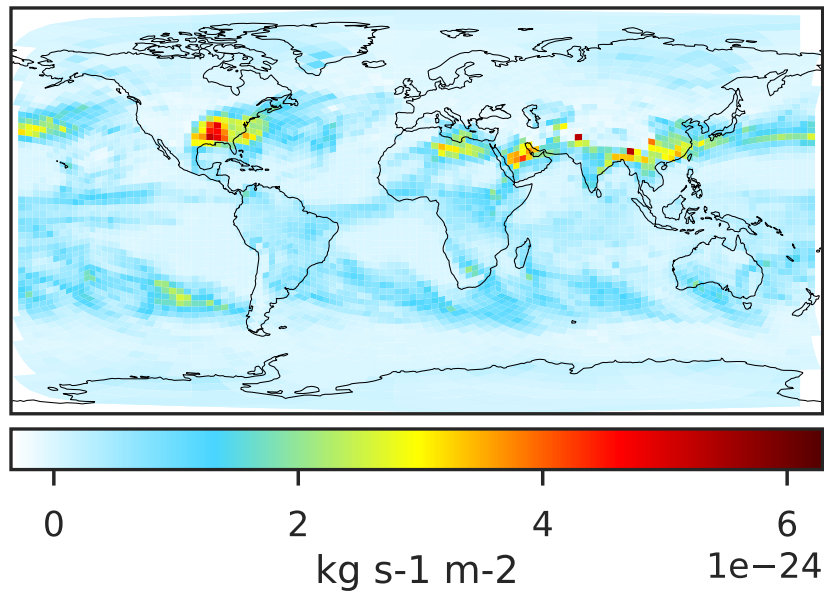
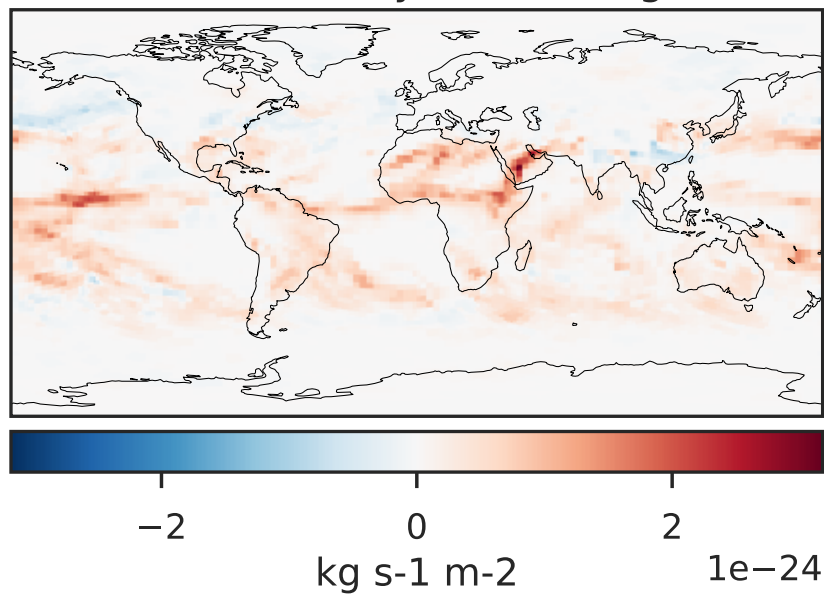


WetLossLS_Be10 (Apr2019)

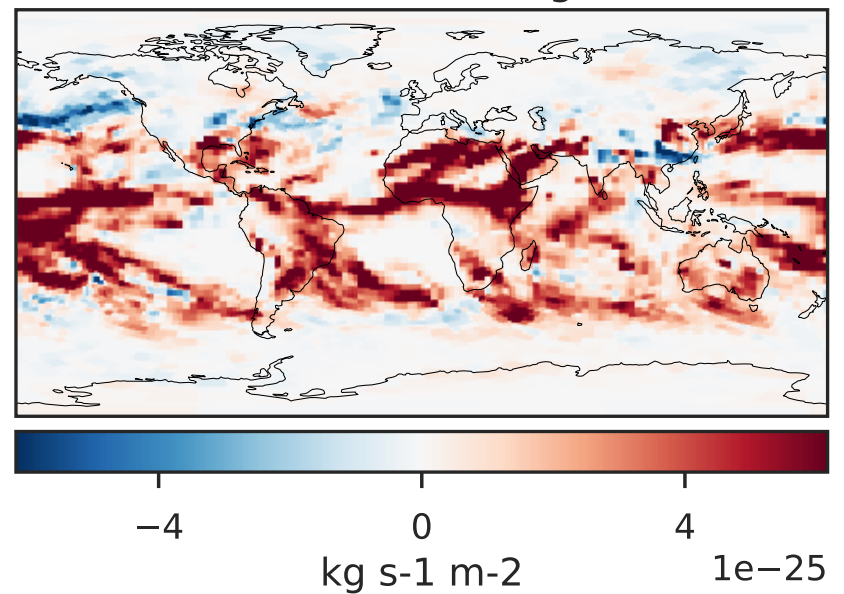
GCHP 14.2.2 using wind (Ref), Normalized by Area c30 GCHP 14.2.2 using mass flux (Dev), Normalized by Area c30



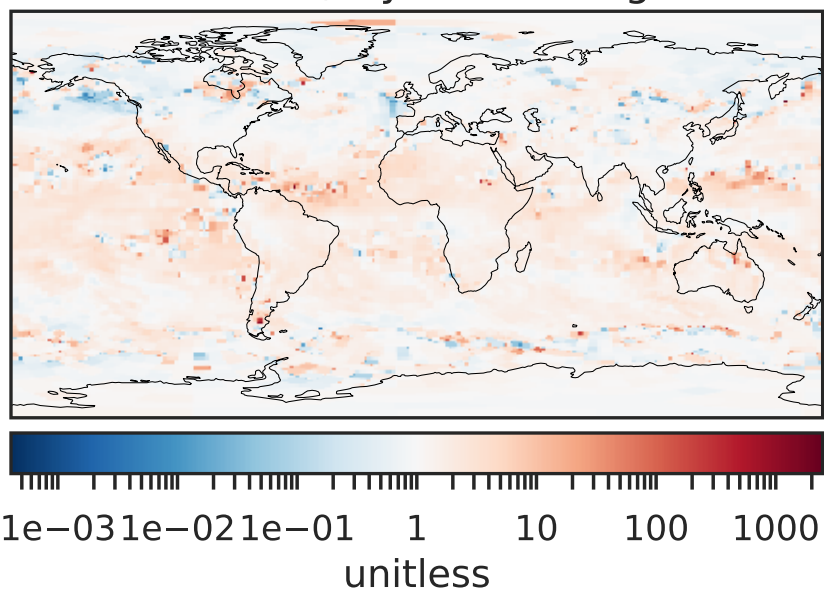
Difference (1x1.25)
Dev - Ref, Dynamic Range



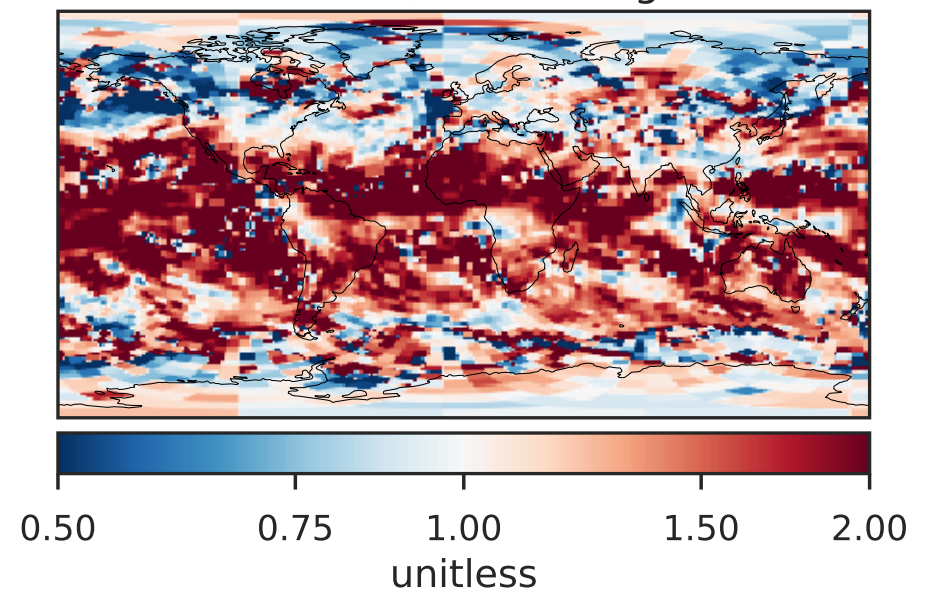
Difference (1x1.25)
Dev - Ref, Restricted Range [5%,95%]



Ratio (1x1.25)
Dev/Ref, Dynamic Range

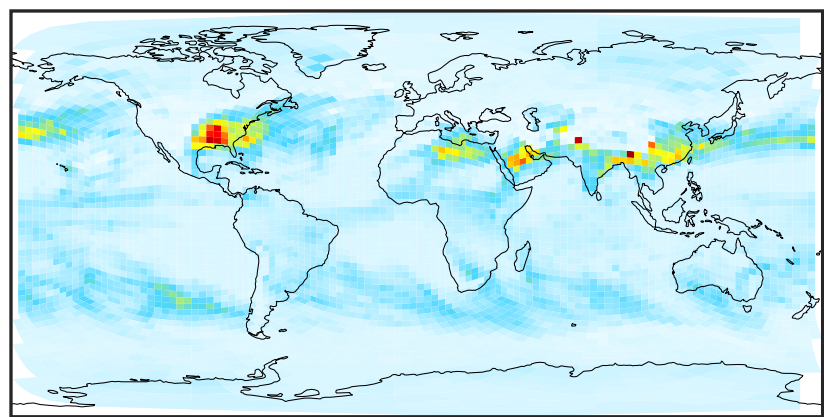


Ratio (1x1.25)
Dev/Ref, Fixed Range

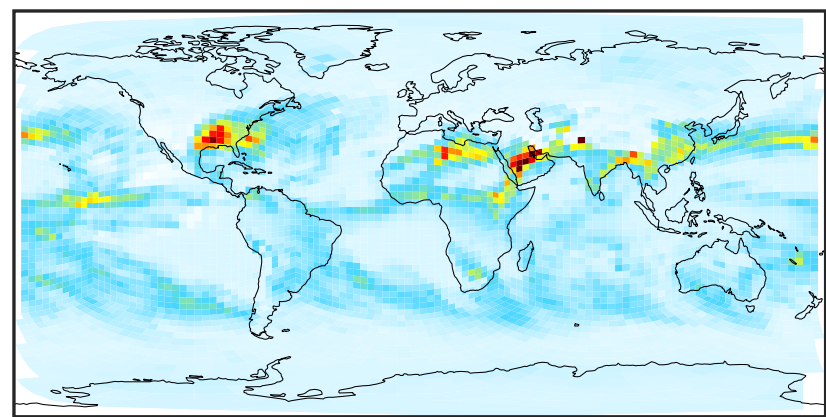


WetLossLS_Be10s (Apr2019)

GCHP 14.2.2 using wind (Ref), Normalized by Area
GCHP 14.2.2 using mass flux (Dev), Normalized by Area

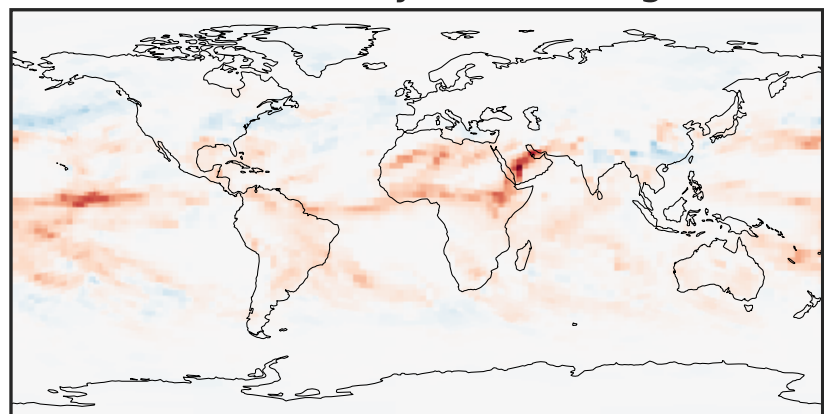


0.0 1.5 3.0 4.5
kg s-1 m-2 1e-24



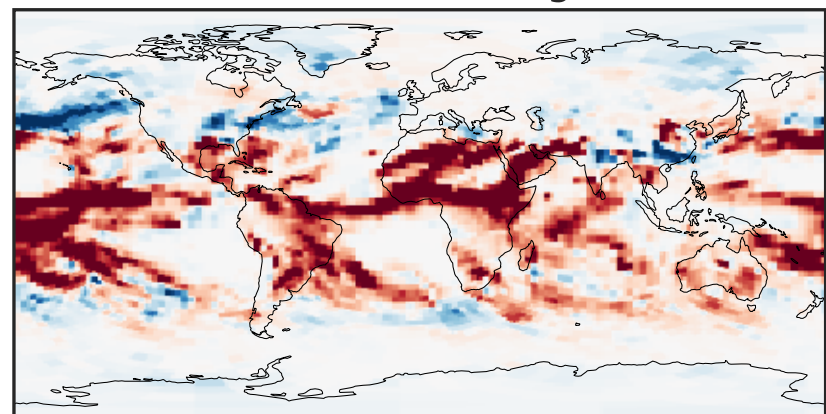
0.0 1.5 3.0 4.5
kg s-1 m-2 1e-24

Difference (1x1.25)
Dev - Ref, Dynamic Range



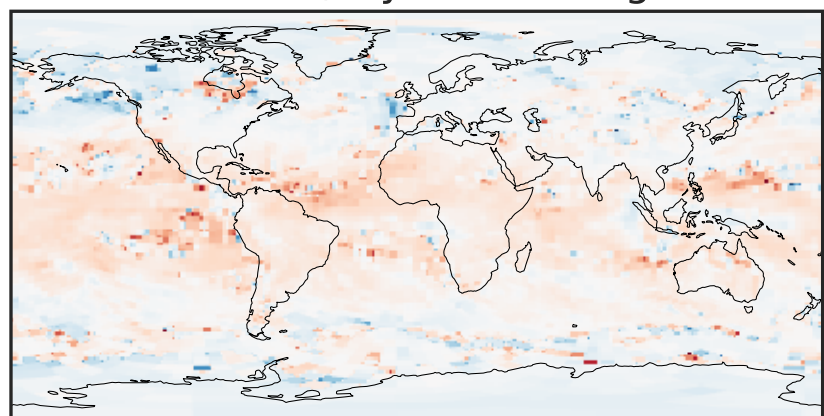
-1.5 0.0 1.5
kg s-1 m-2 1e-24

Difference (1x1.25)
Dev - Ref, Restricted Range [5%,95%]



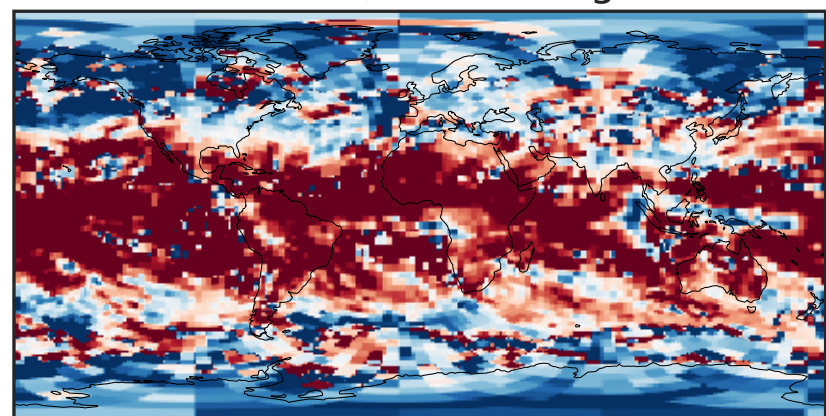
-2.5 0.0 2.5
kg s-1 m-2 1e-25

Ratio (1x1.25)
Dev/Ref, Dynamic Range



1e-03 1e-02 1e-01 1 10 100 1000
unitless

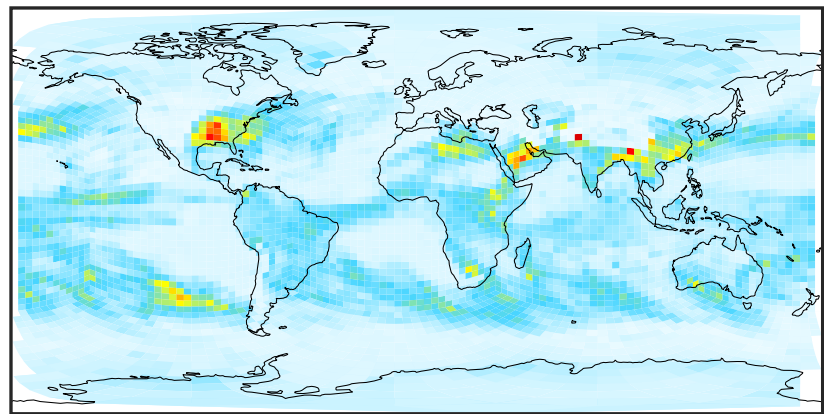
Ratio (1x1.25)
Dev/Ref, Fixed Range



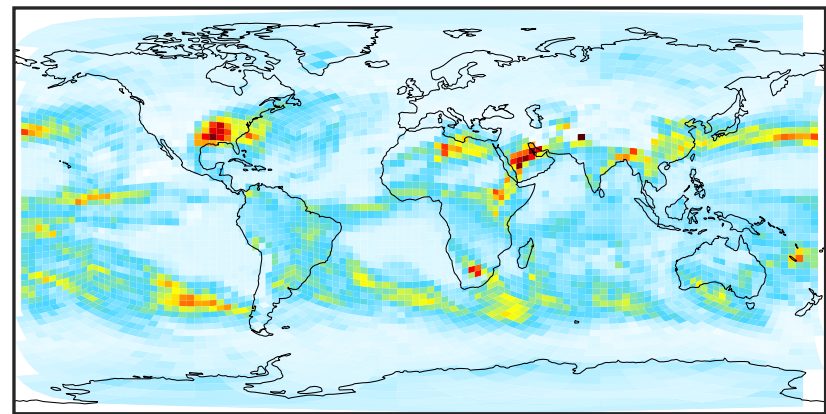
0.50 0.75 1.00 1.50 2.00
unitless

WetLossLS_Be7 (Apr2019)

GCHP 14.2.2 using wind (Ref), Normalized by Area
GCHP 14.2.2 using mass flux (Dev), Normalized by Area

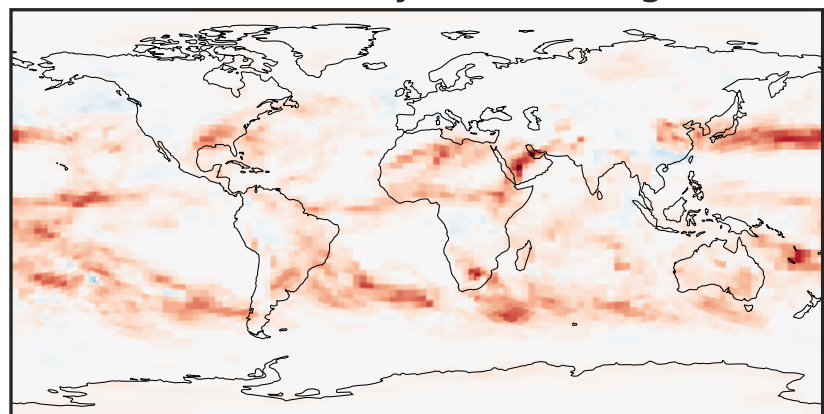


0.0 0.4 0.8 1.2
kg s⁻¹ m⁻² 1e⁻²⁴



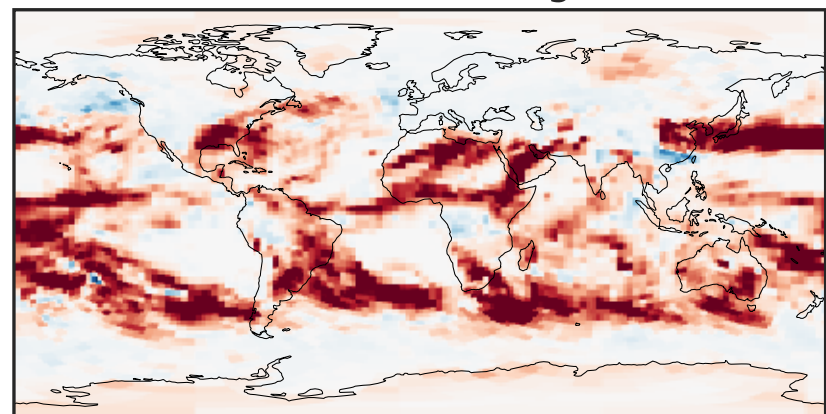
0.0 0.4 0.8 1.2
kg s⁻¹ m⁻² 1e⁻²⁴

Difference (1x1.25)
Dev - Ref, Dynamic Range



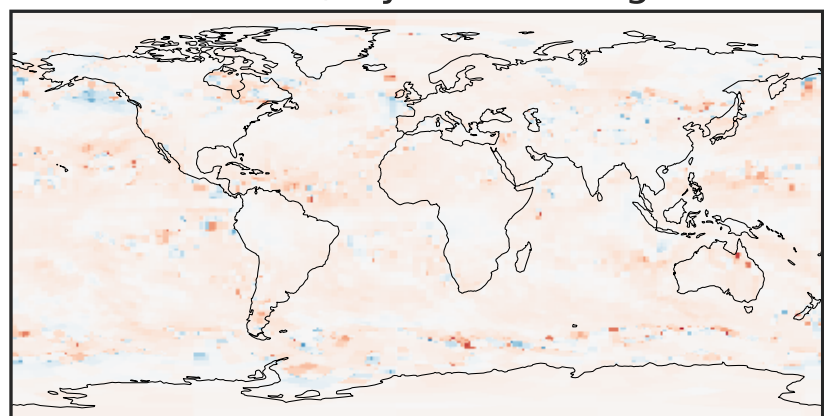
-2.5 0.0 2.5
kg s⁻¹ m⁻² 1e⁻²⁵

Difference (1x1.25)
Dev - Ref, Restricted Range [5%,95%]



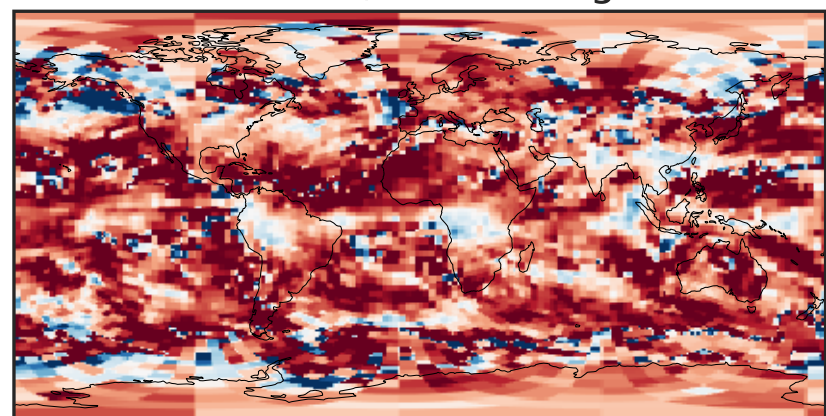
-8 0 8
kg s⁻¹ m⁻² 1e⁻²⁶

Ratio (1x1.25)
Dev/Ref, Dynamic Range



unitless

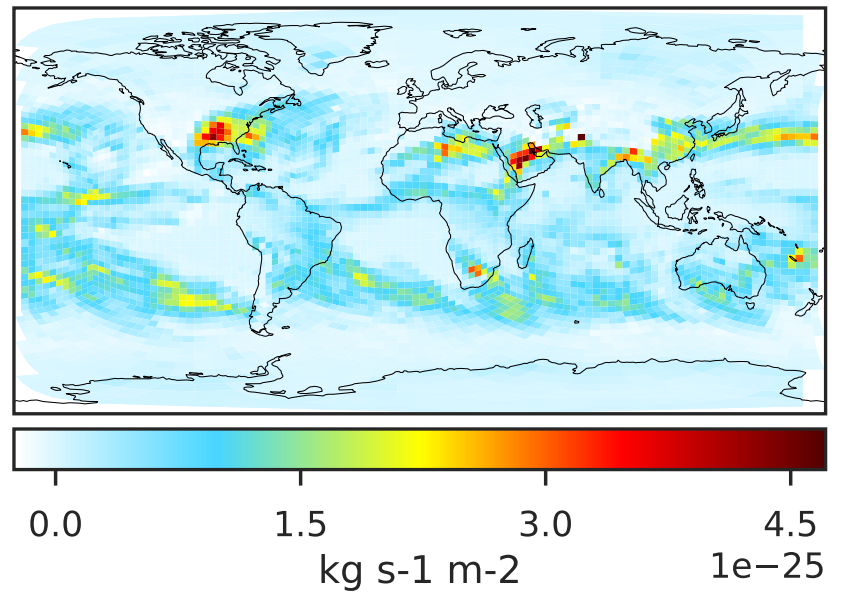
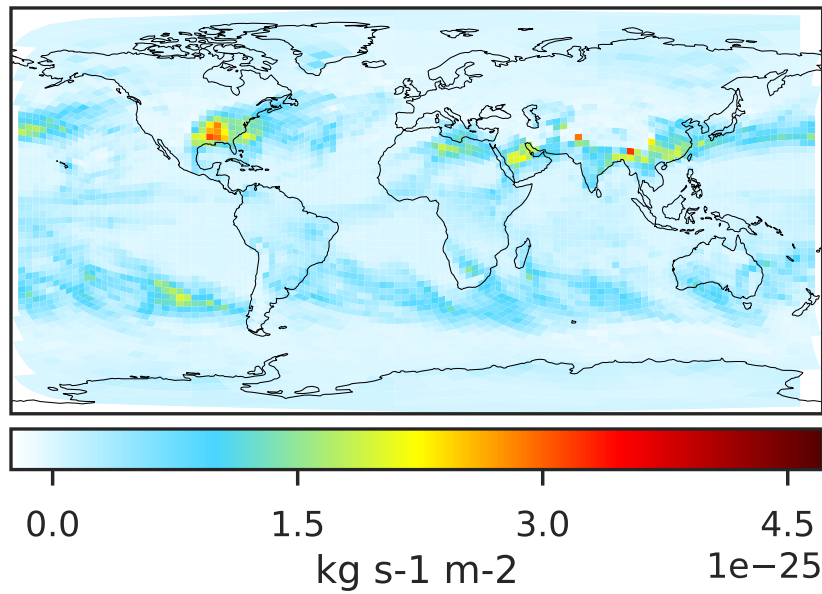
Ratio (1x1.25)
Dev/Ref, Fixed Range



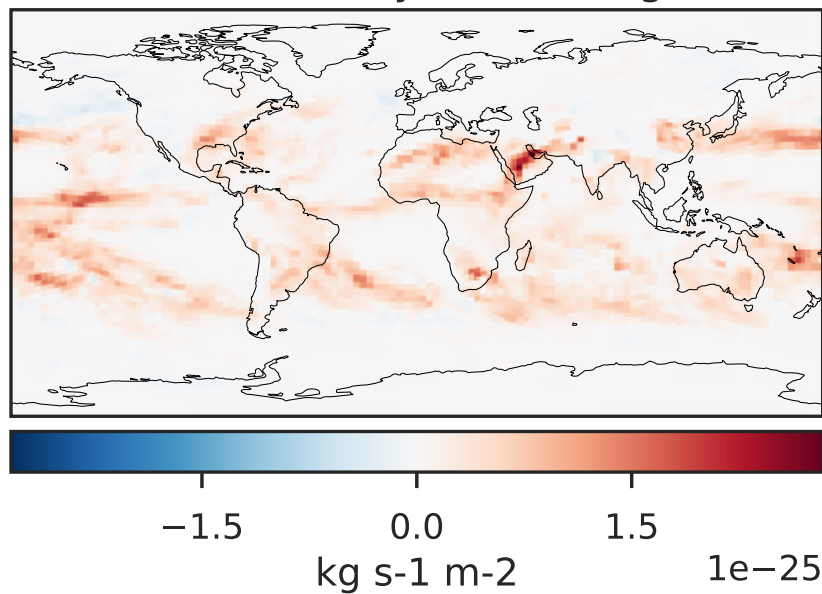
0.50 0.75 1.00 1.50 2.00
unitless

WetLossLS_Be7s (Apr2019)

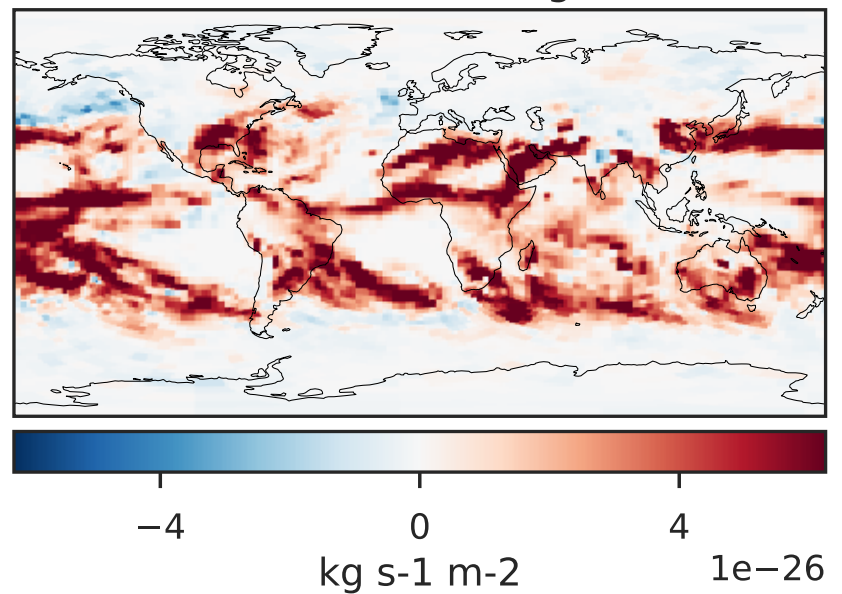
GCHP 14.2.2 using wind (Ref), Normalized by Area
GCHP 14.2.2 using mass flux (Dev), Normalized by Area
c30 c30



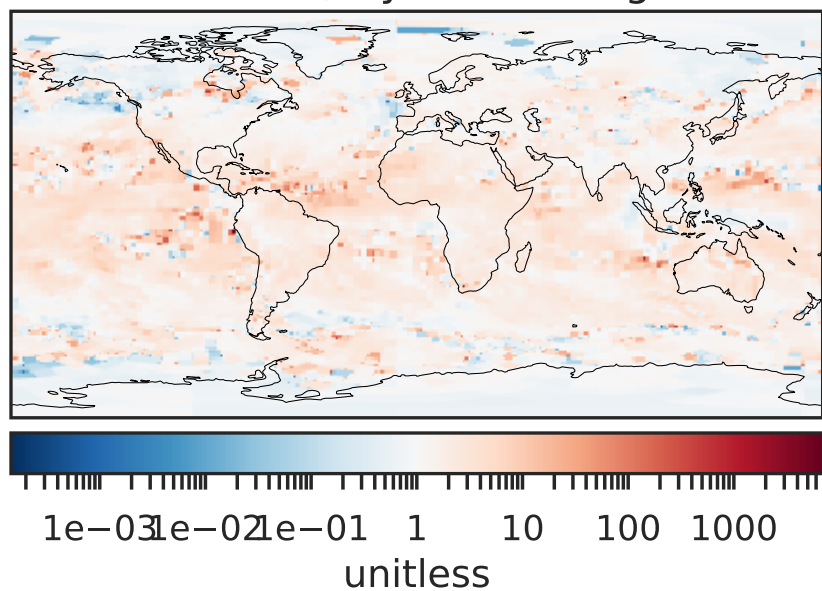
Difference (1x1.25)
Dev - Ref, Dynamic Range



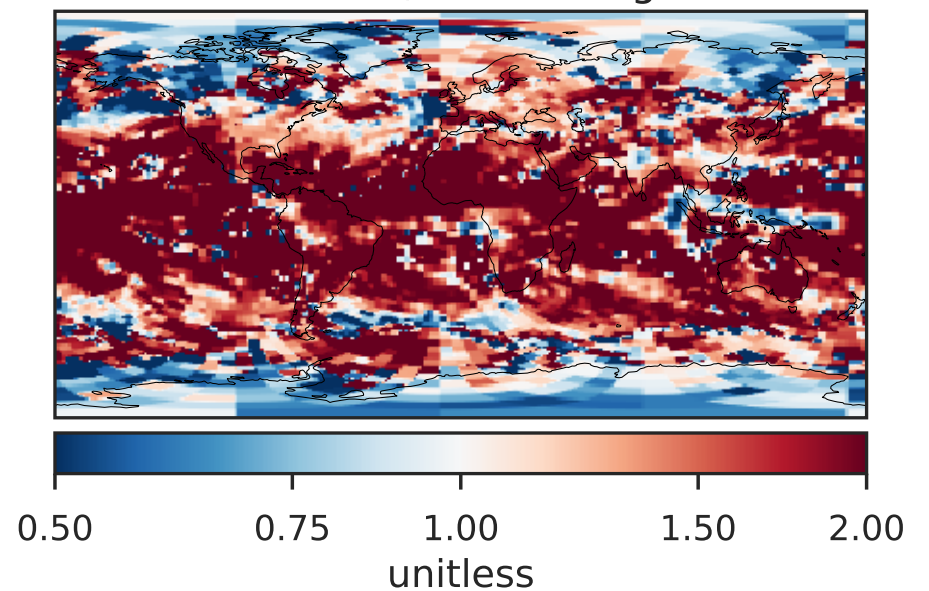
Difference (1x1.25)
Dev - Ref, Restricted Range [5%,95%]



Ratio (1x1.25)
Dev/Ref, Dynamic Range

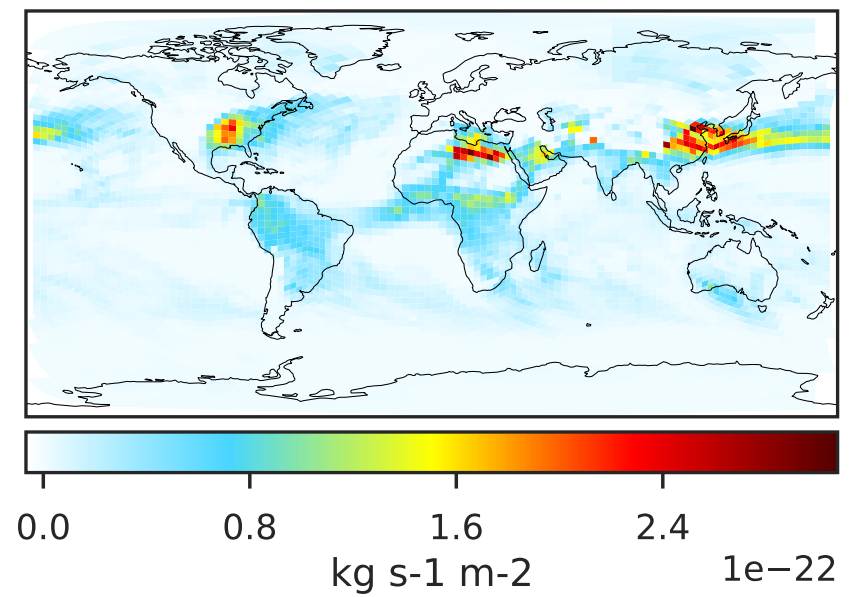
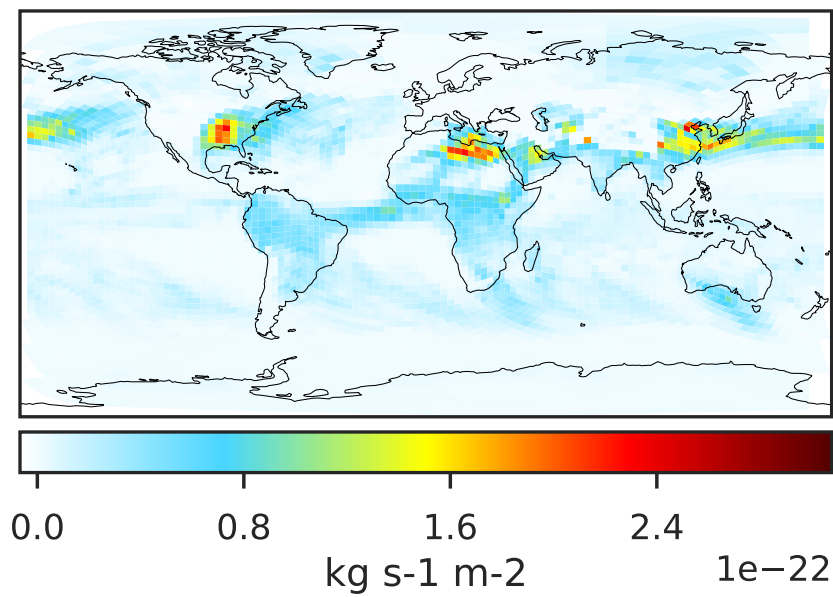


Ratio (1x1.25)
Dev/Ref, Fixed Range

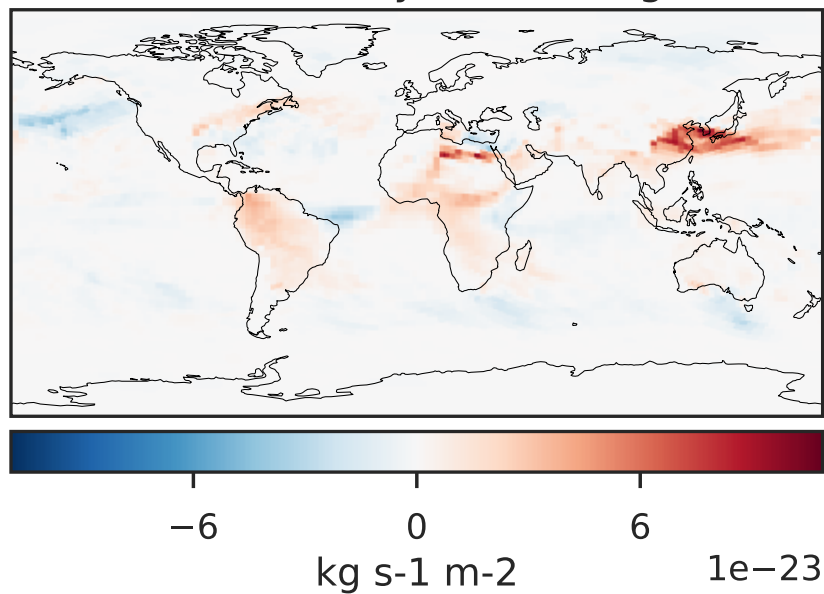


WetLossLS_Pb210 (Apr2019)

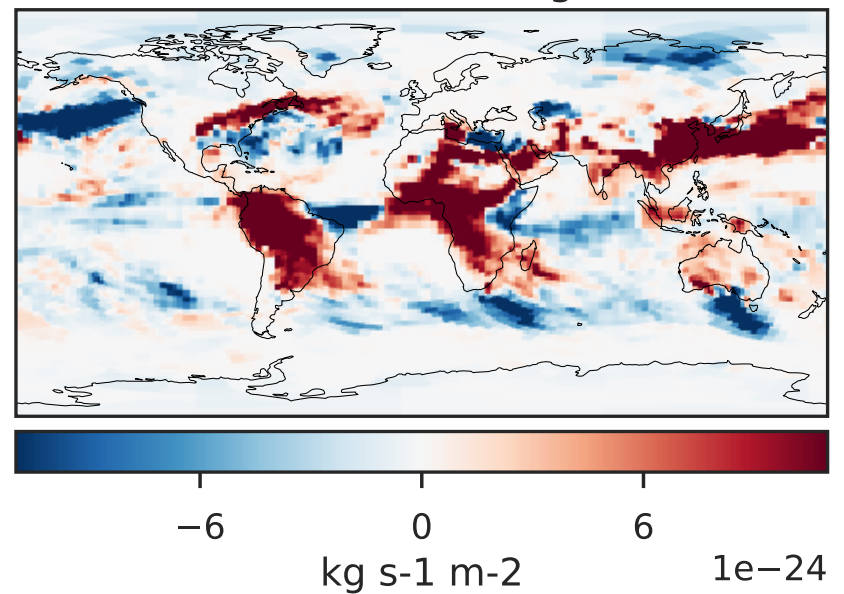
GCHP 14.2.2 using wind (Ref), Normalized by Area
GCHP 14.2.2 using mass flux (Dev), Normalized by Area



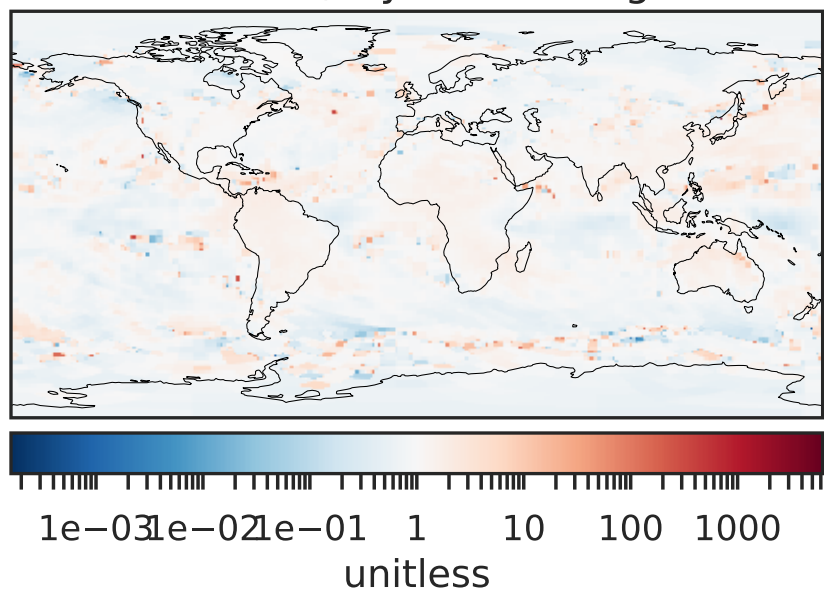
Difference (1x1.25)
Dev - Ref, Dynamic Range



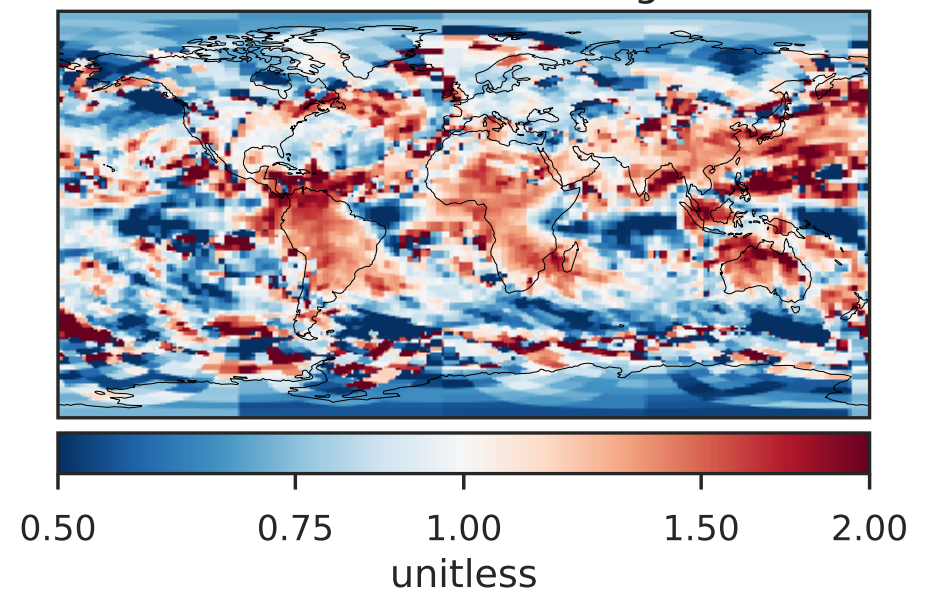
Difference (1x1.25)
Dev - Ref, Restricted Range [5%,95%]



Ratio (1x1.25)
Dev/Ref, Dynamic Range

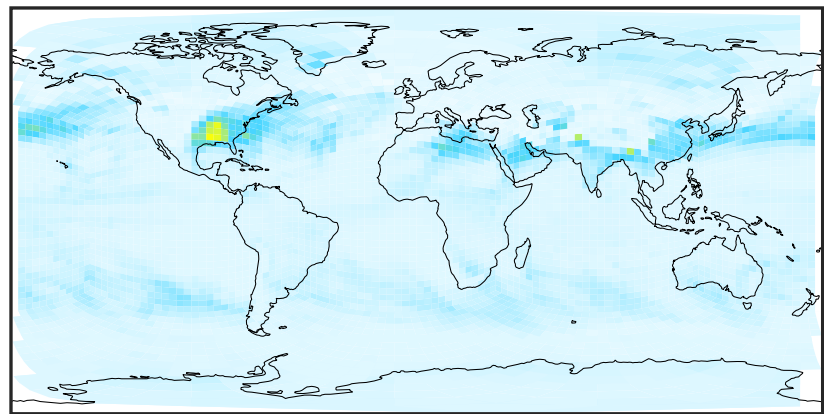


Ratio (1x1.25)
Dev/Ref, Fixed Range

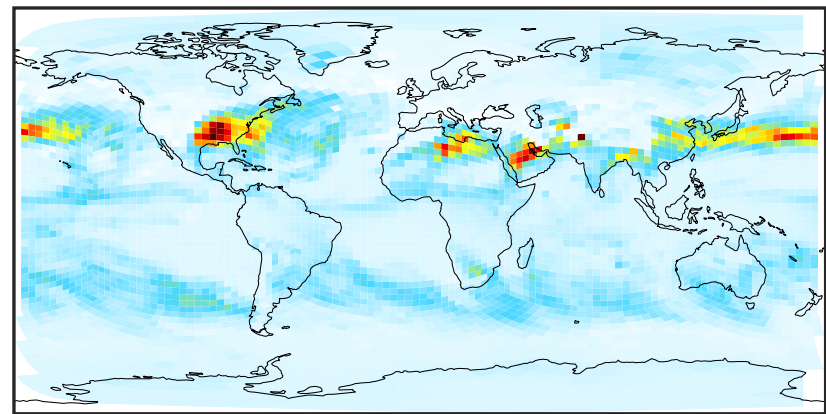


WetLossLS_Pb210s (Apr2019)

GCHP 14.2.2 using wind (Ref), Normalized by Area
GCHP 14.2.2 using mass flux (Dev), Normalized by Area

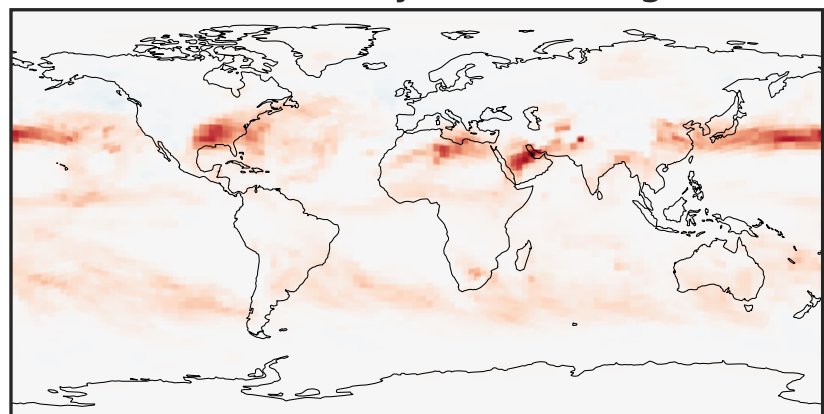


0.0 0.8 1.6 10^{-24}
kg s⁻¹ m⁻²



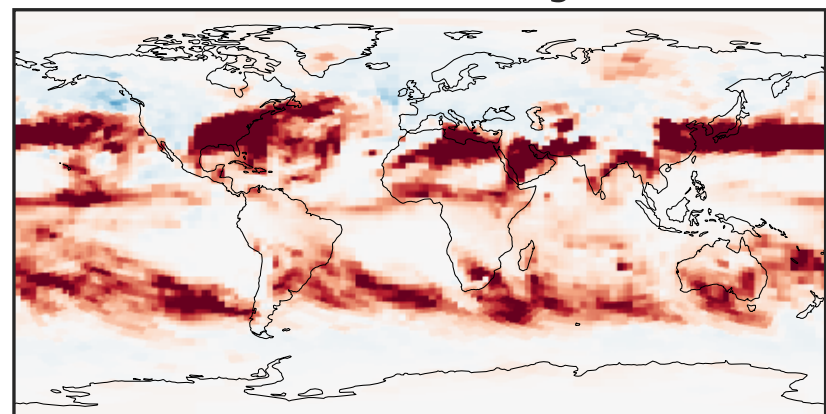
0.0 0.8 1.6 10^{-24}
kg s⁻¹ m⁻²

Difference (1x1.25)
Dev - Ref, Dynamic Range



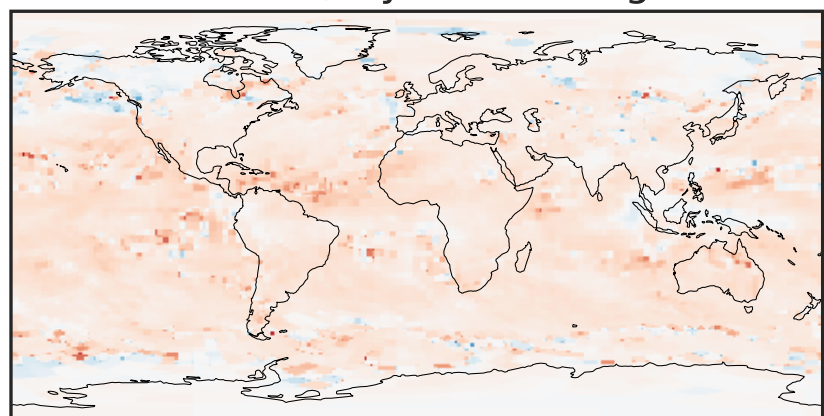
-1 0 1 10^{-24}
kg s⁻¹ m⁻²

Difference (1x1.25)
Dev - Ref, Restricted Range [5%,95%]



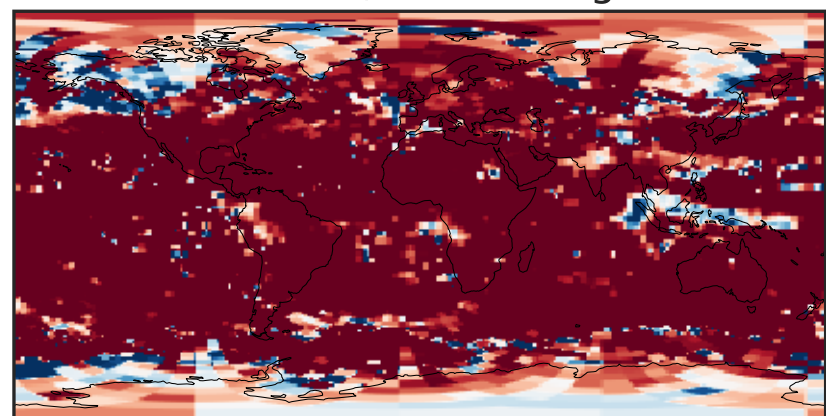
-2 0 2 10^{-25}
kg s⁻¹ m⁻²

Ratio (1x1.25)
Dev/Ref, Dynamic Range



unitless

Ratio (1x1.25)
Dev/Ref, Fixed Range



0.50 0.75 1.00 1.50 2.00
unitless