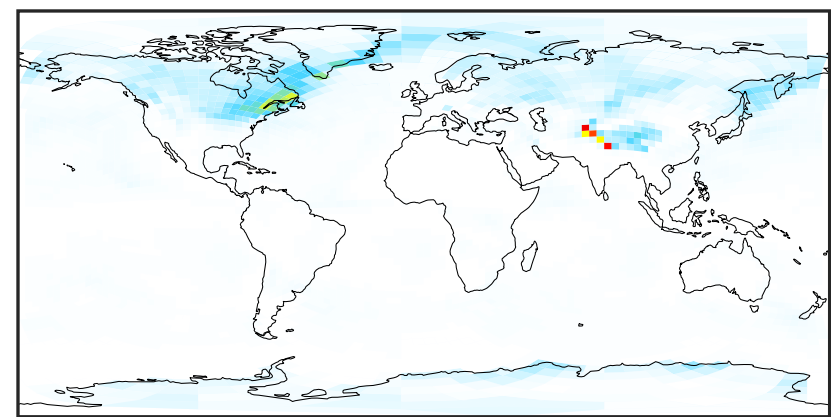
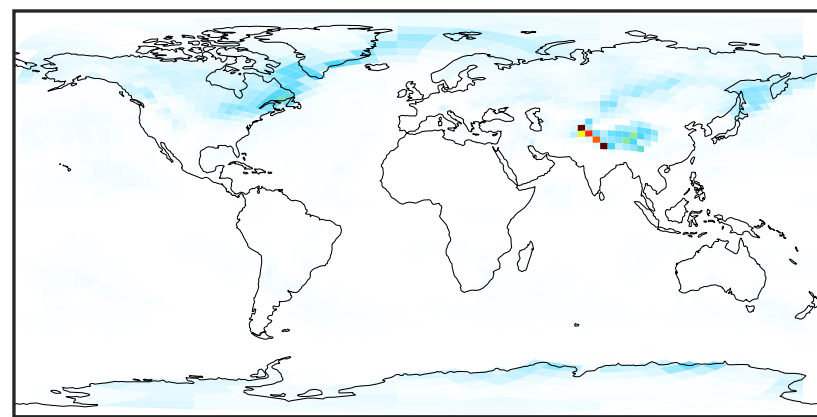


WetLossLS_Be10 (Jan2019)

GCHP 14.2.2 using wind (Ref), Normalized by Area
GCHP 14.2.2 using mass flux (Dev), Normalized by Area

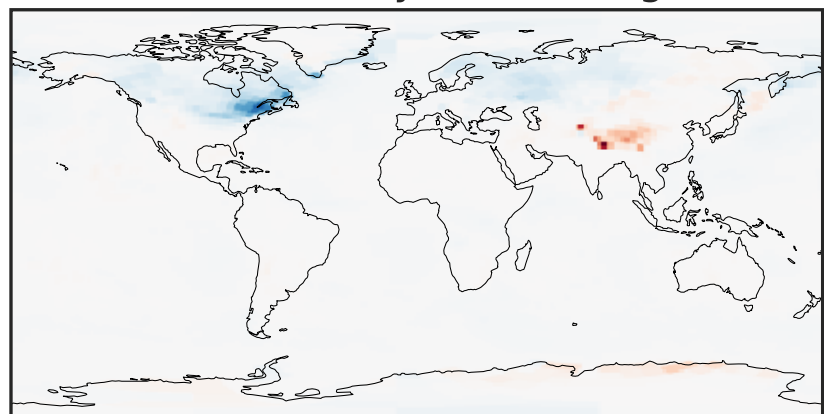


0 1 2 3
 $\text{kg s}^{-1} \text{m}^{-2}$ 10^{-25}



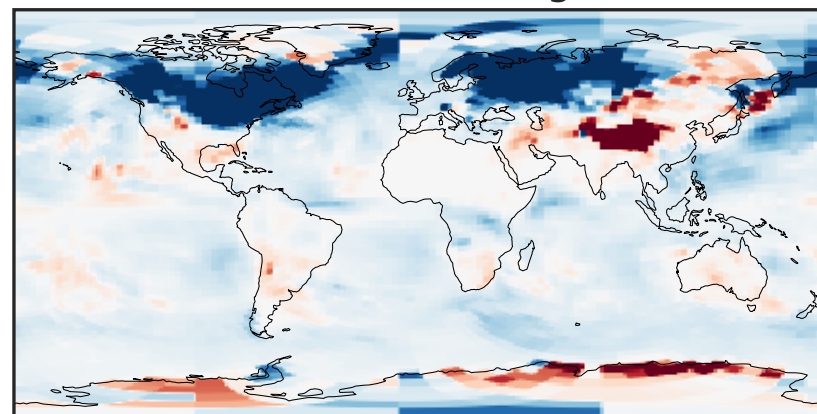
0 1 2 3
 $\text{kg s}^{-1} \text{m}^{-2}$ 10^{-25}

Difference (1x1.25)
Dev - Ref, Dynamic Range



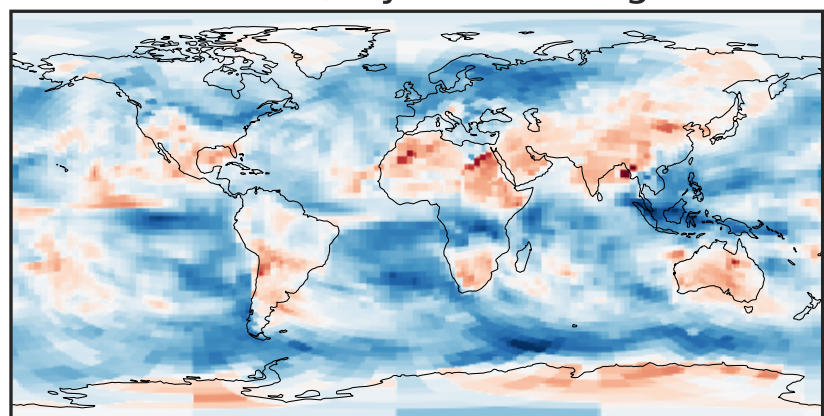
-5 0 5
 $\text{kg s}^{-1} \text{m}^{-2}$ 10^{-26}

Difference (1x1.25)
Dev - Ref, Restricted Range [5%,95%]



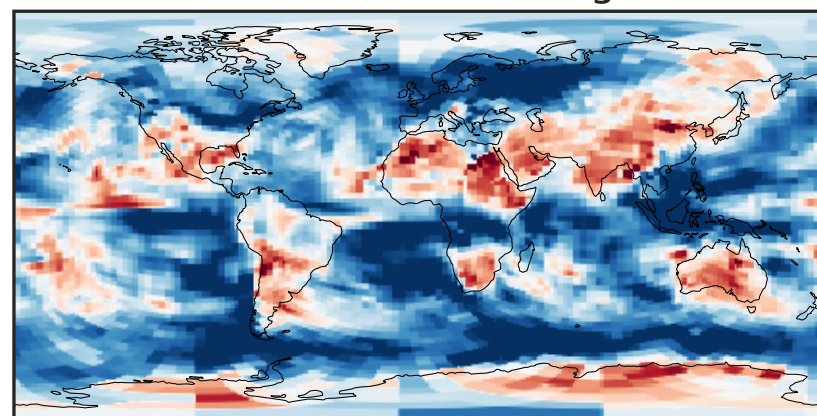
-4 0 4
 $\text{kg s}^{-1} \text{m}^{-2}$ 10^{-27}

Ratio (1x1.25)
Dev/Ref, Dynamic Range



0.286 0.643 1.000 2.246 3.492
unitless

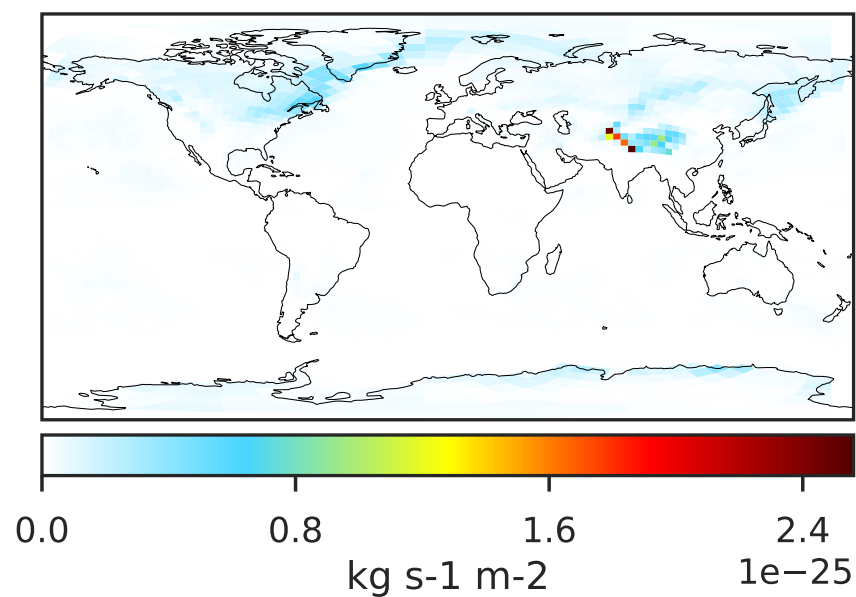
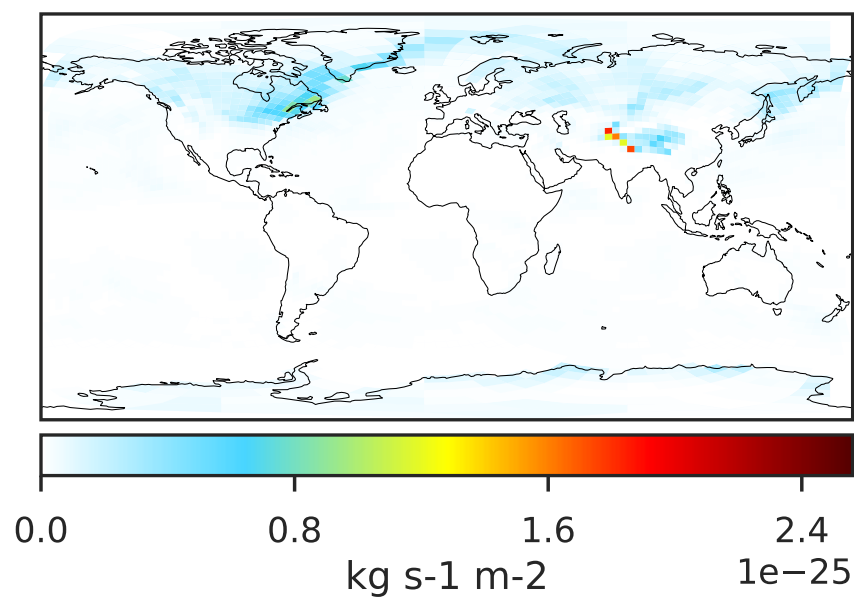
Ratio (1x1.25)
Dev/Ref, Fixed Range



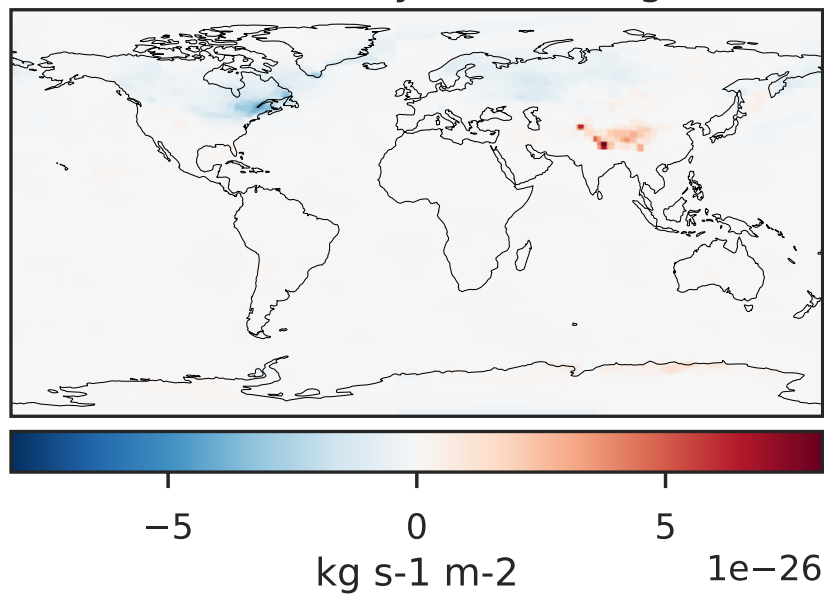
0.50 0.75 1.00 1.50 2.00
unitless

WetLossLS_Be10s (Jan2019)

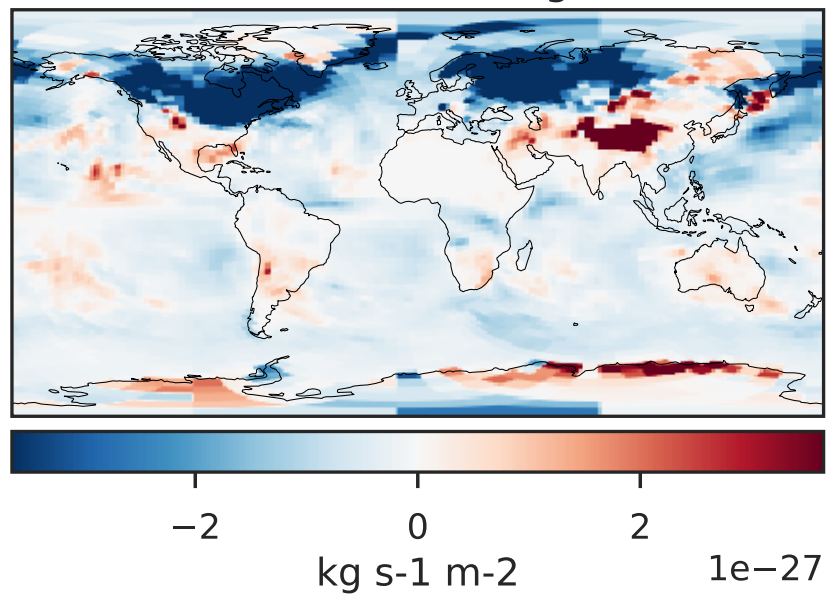
GCHP 14.2.2 using wind (Ref), Normalized by Area
GCHP 14.2.2 using mass flux (Dev), Normalized by Area



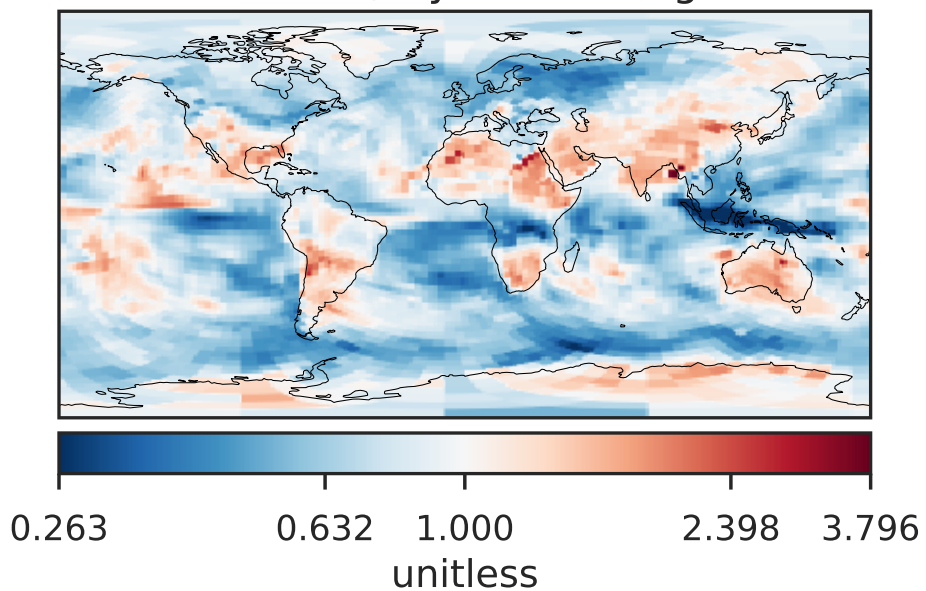
Difference (1x1.25)
Dev - Ref, Dynamic Range



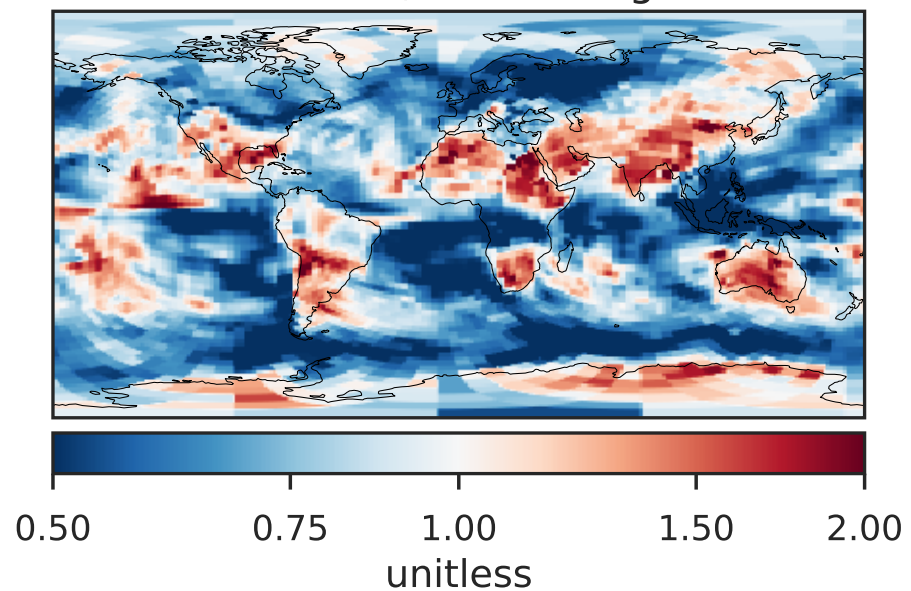
Difference (1x1.25)
Dev - Ref, Restricted Range [5%,95%]



Ratio (1x1.25)
Dev/Ref, Dynamic Range

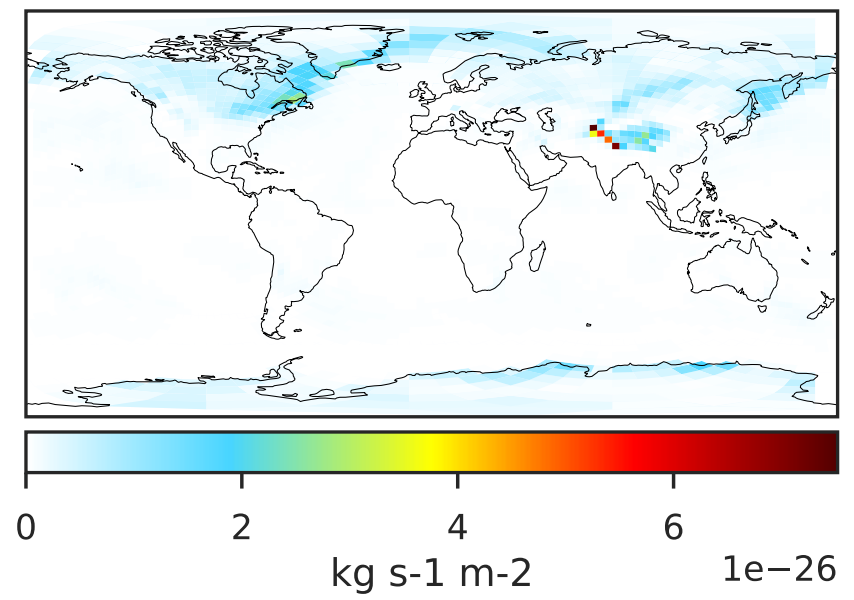
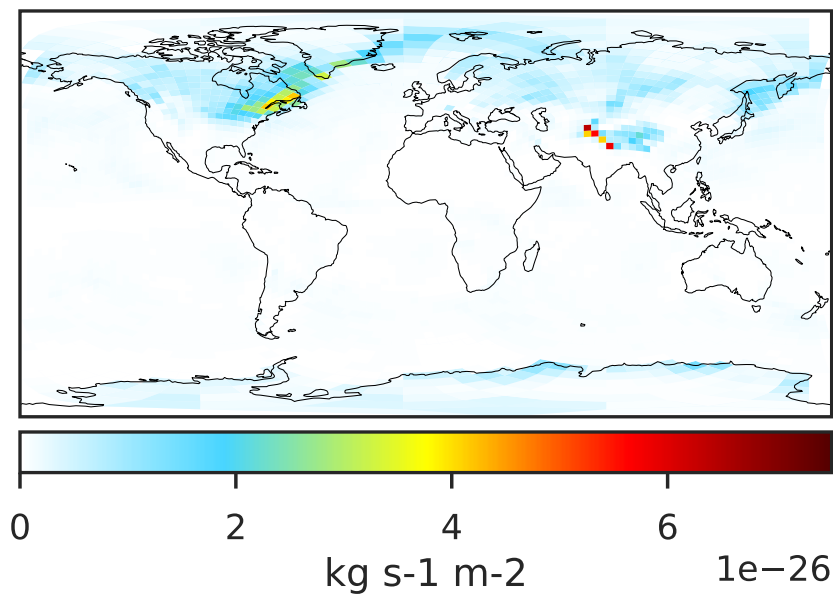


Ratio (1x1.25)
Dev/Ref, Fixed Range

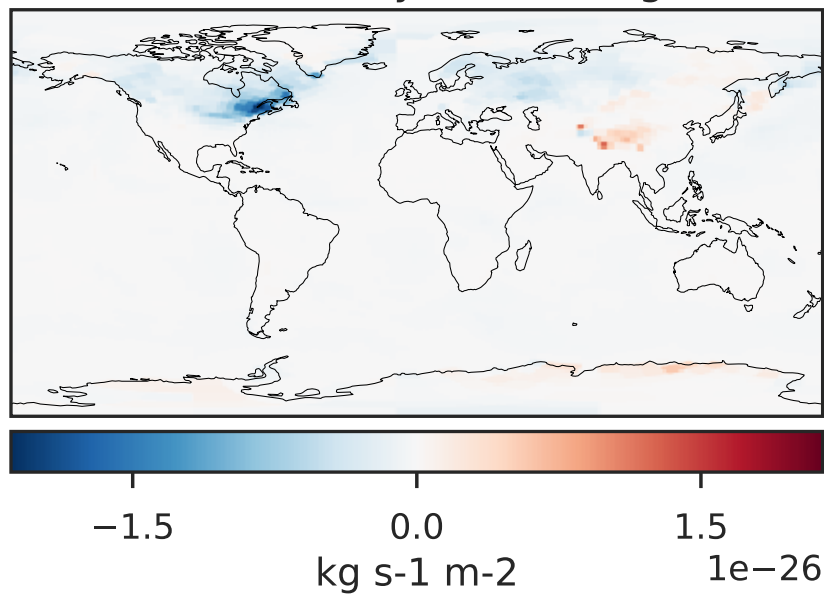


WetLossLS_Be7 (Jan2019)

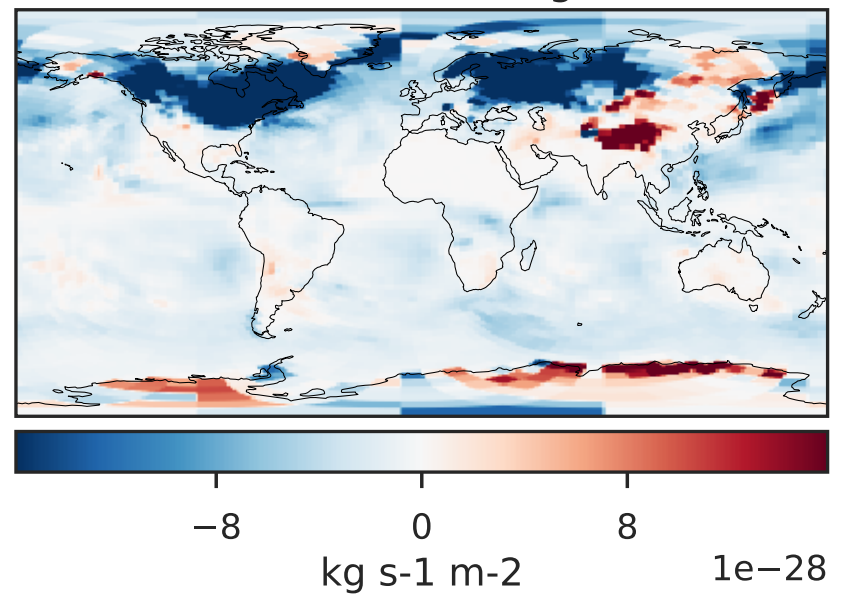
GCHP 14.2.2 using wind (Ref), Normalized by Area
GCHP 14.2.2 using mass flux (Dev), Normalized by Area



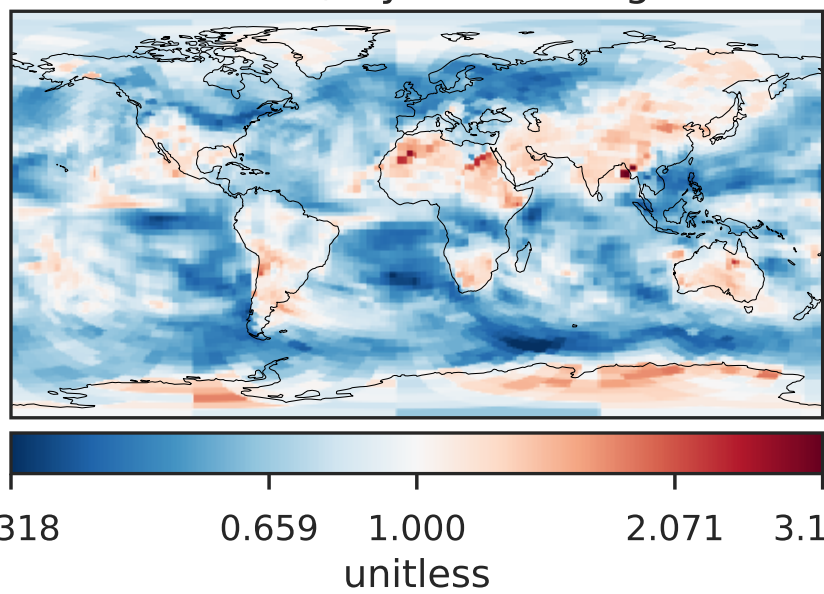
Difference (1x1.25)
Dev - Ref, Dynamic Range



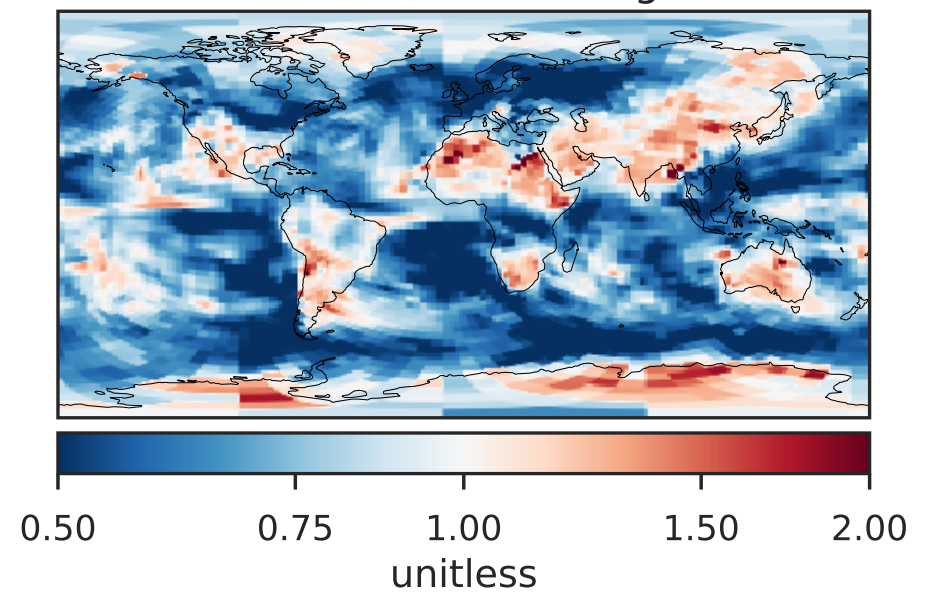
Difference (1x1.25)
Dev - Ref, Restricted Range [5%,95%]



Ratio (1x1.25)
Dev/Ref, Dynamic Range

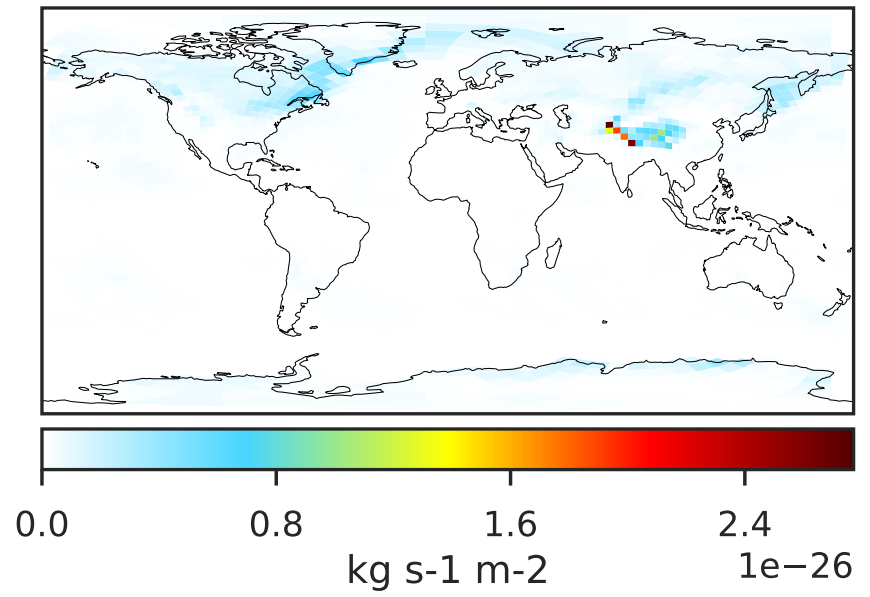
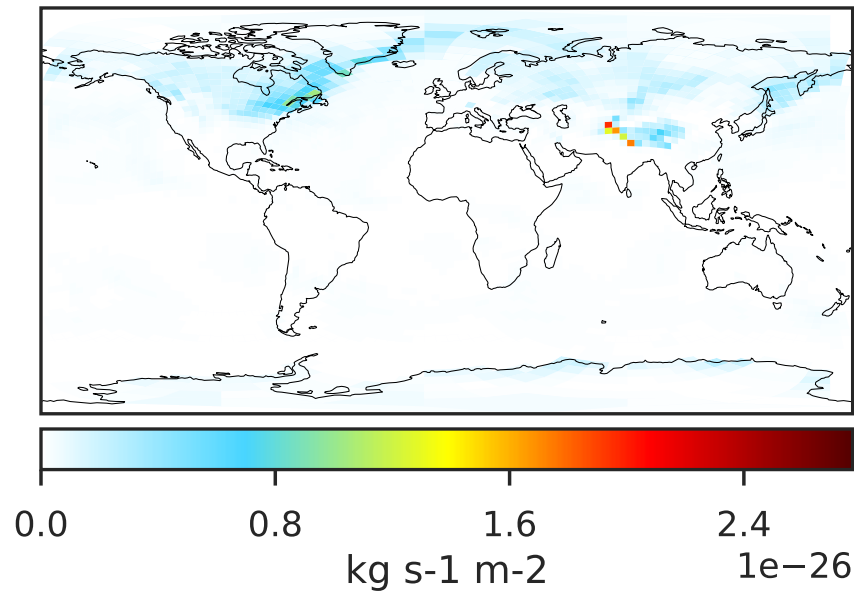


Ratio (1x1.25)
Dev/Ref, Fixed Range

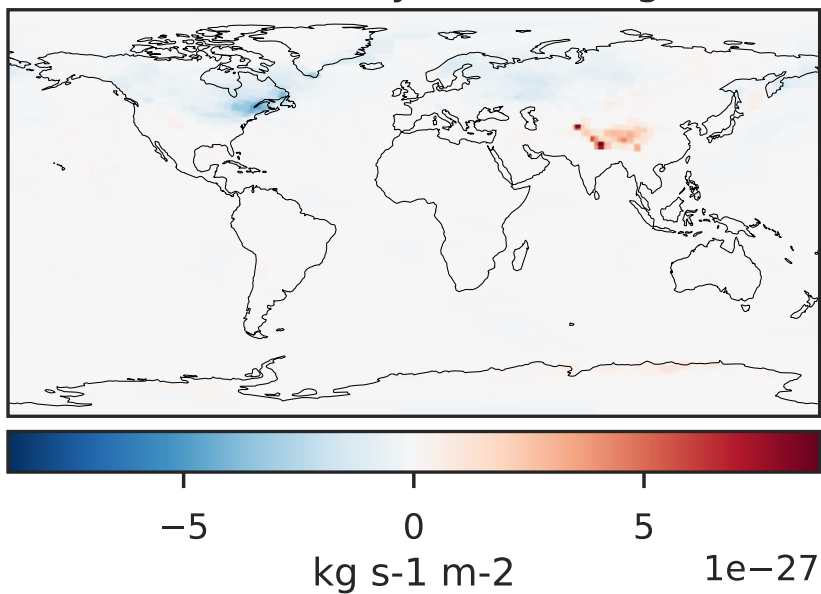


WetLossLS_Be7s (Jan2019)

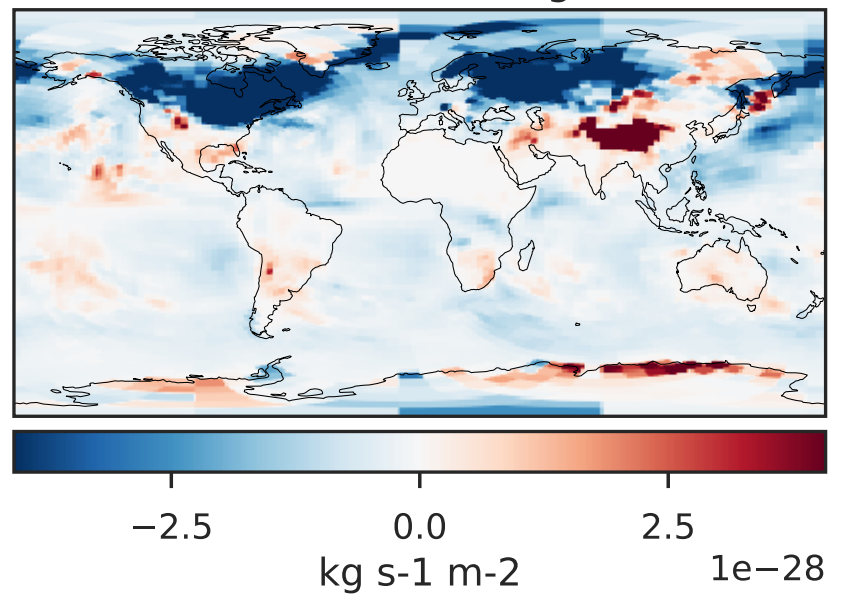
GCHP 14.2.2 using wind (Ref), Normalized by Area
GCHP 14.2.2 using mass flux (Dev), Normalized by Area
c30 c30



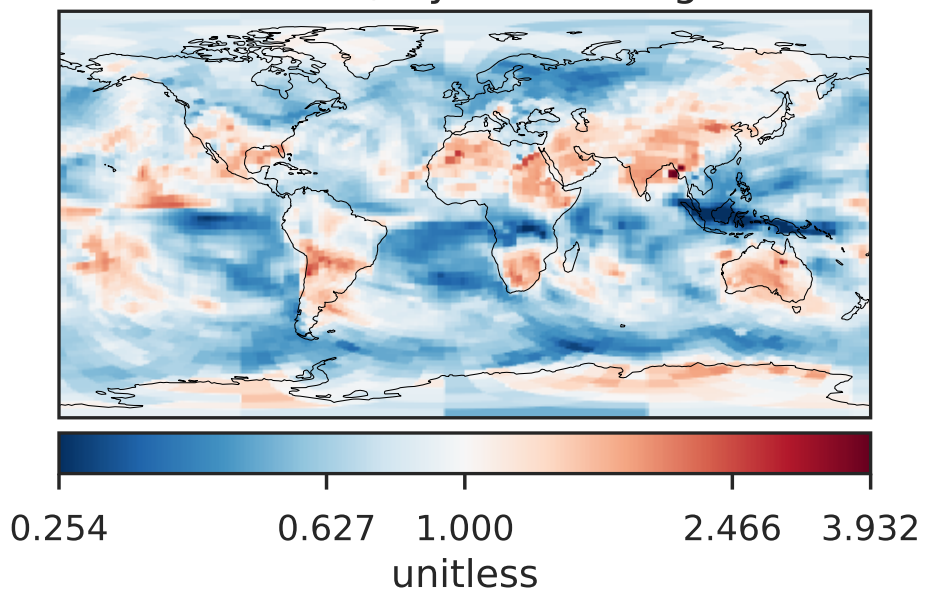
Difference (1x1.25)
Dev - Ref, Dynamic Range



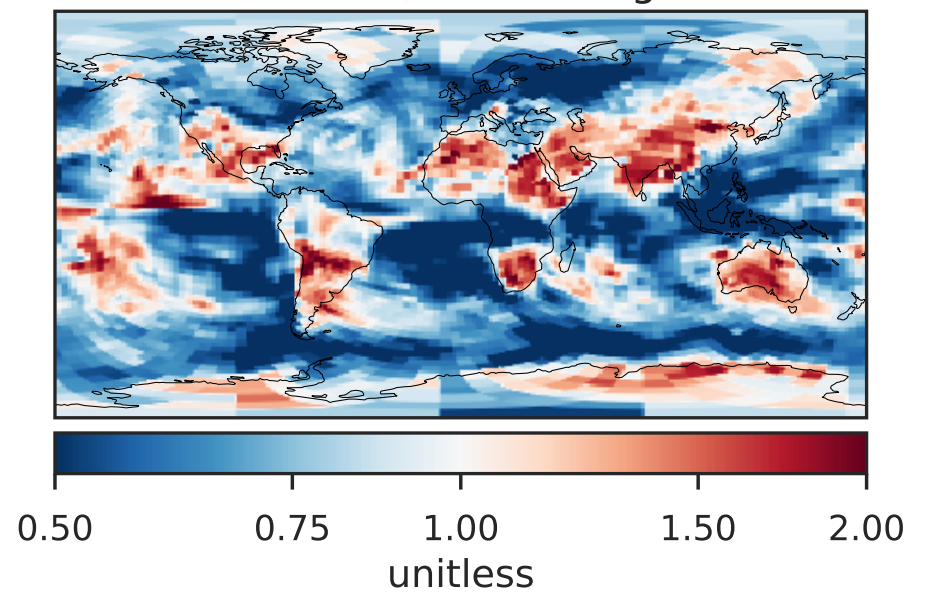
Difference (1x1.25)
Dev - Ref, Restricted Range [5%,95%]



Ratio (1x1.25)
Dev/Ref, Dynamic Range

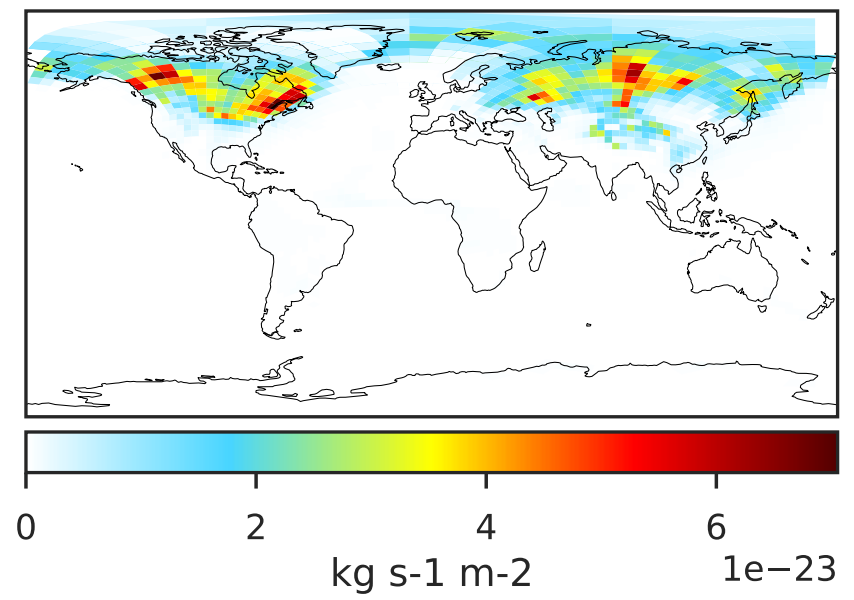
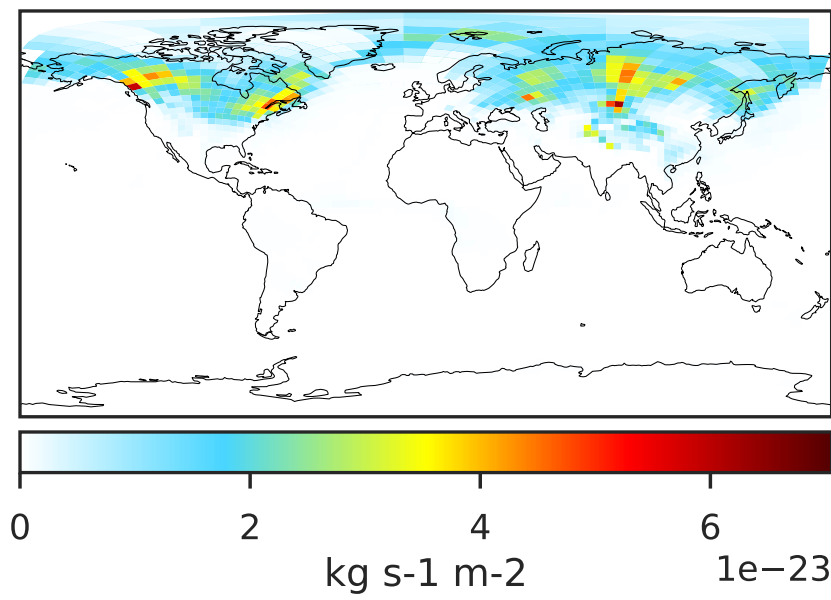


Ratio (1x1.25)
Dev/Ref, Fixed Range

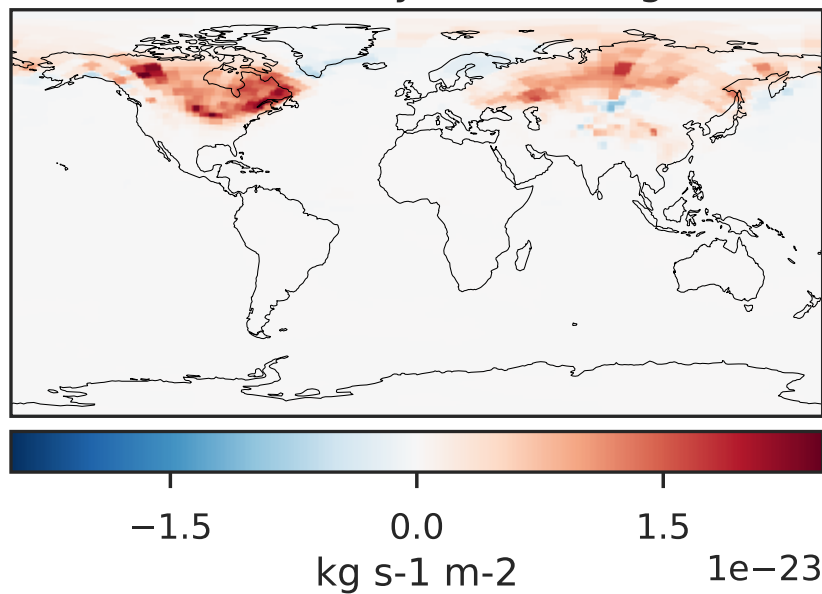


WetLossLS_Pb210 (Jan2019)

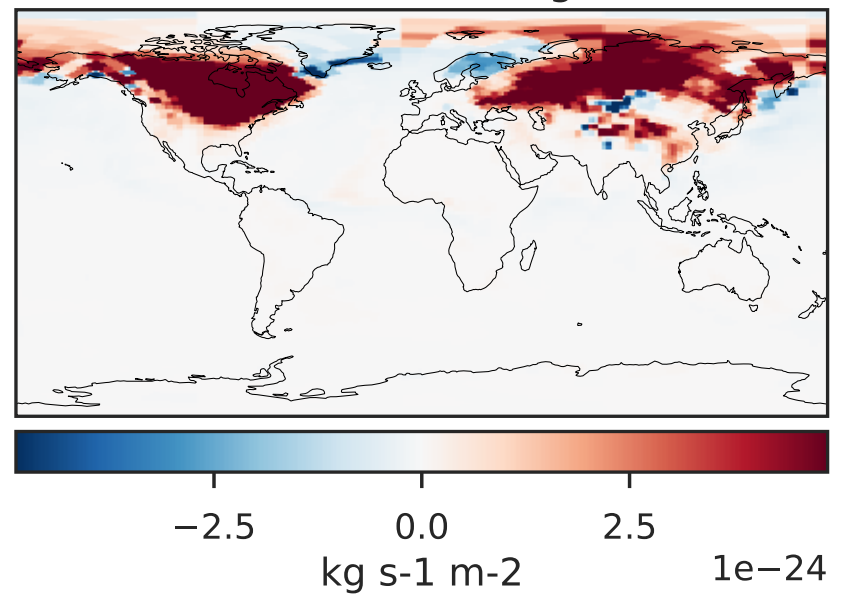
GCHP 14.2.2 using wind (Ref), Normalized by Area
GCHP 14.2.2 using mass flux (Dev), Normalized by Area



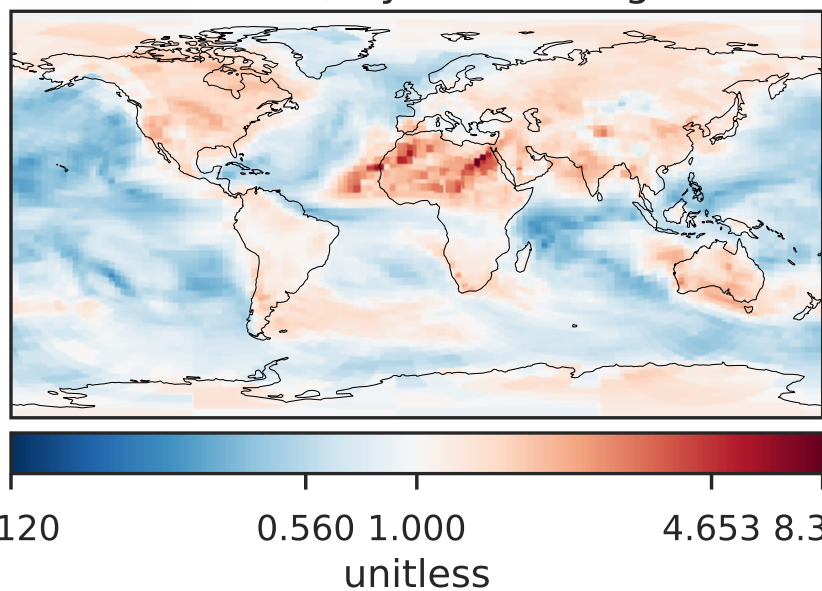
Difference (1x1.25)
Dev - Ref, Dynamic Range



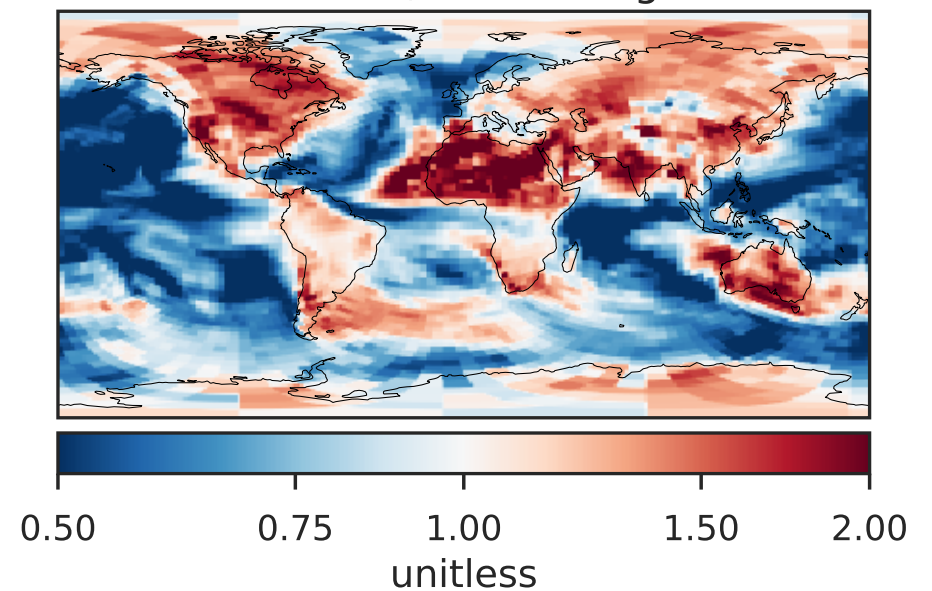
Difference (1x1.25)
Dev - Ref, Restricted Range [5%,95%]



Ratio (1x1.25)
Dev/Ref, Dynamic Range

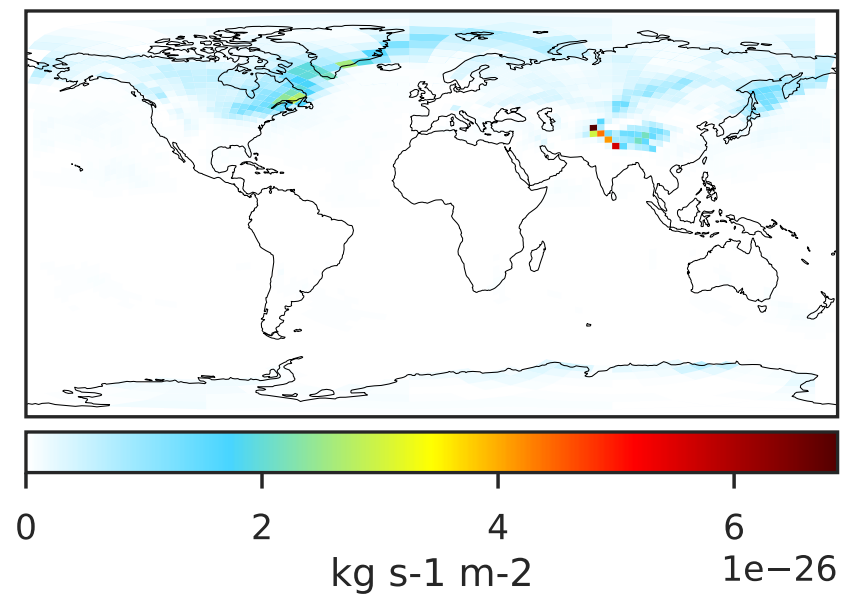
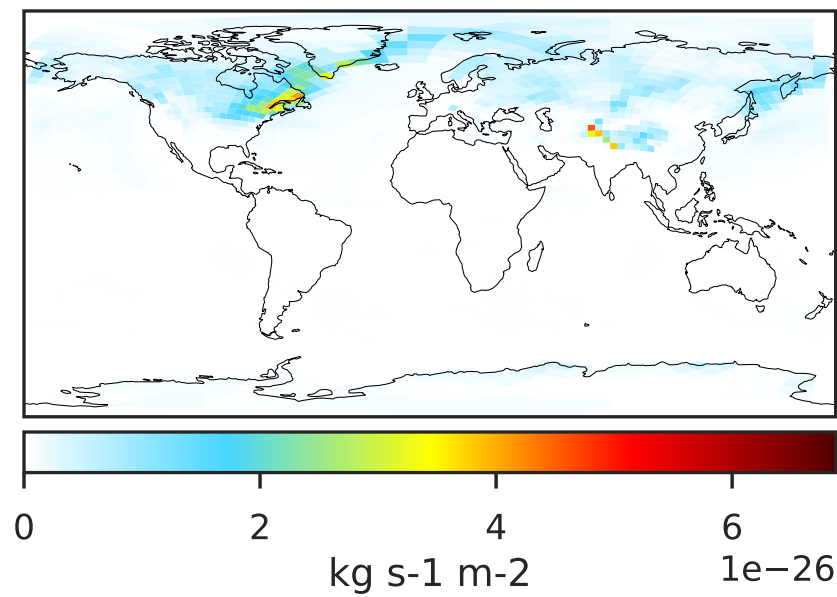


Ratio (1x1.25)
Dev/Ref, Fixed Range

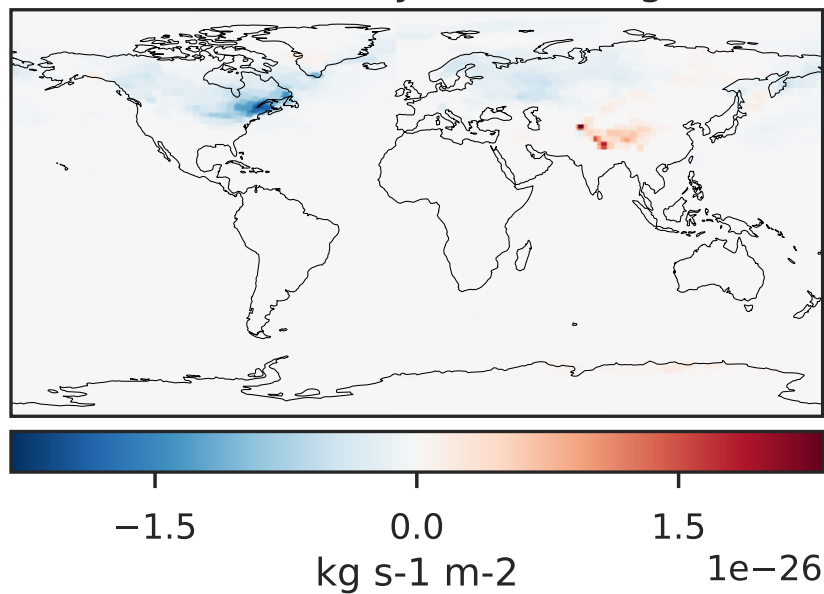


WetLossLS_Pb210s (Jan2019)

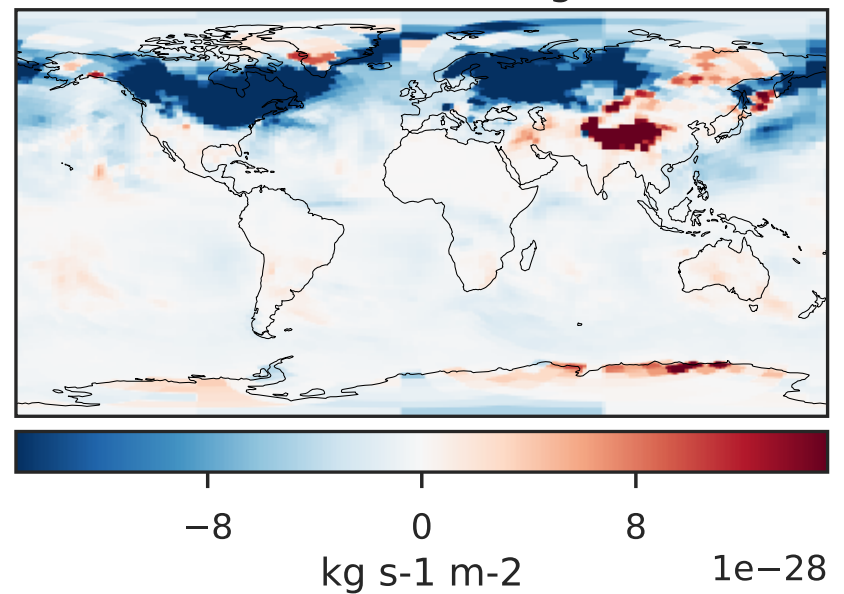
GCHP 14.2.2 using wind (Ref), Normalized by Area
GCHP 14.2.2 using mass flux (Dev), Normalized by Area



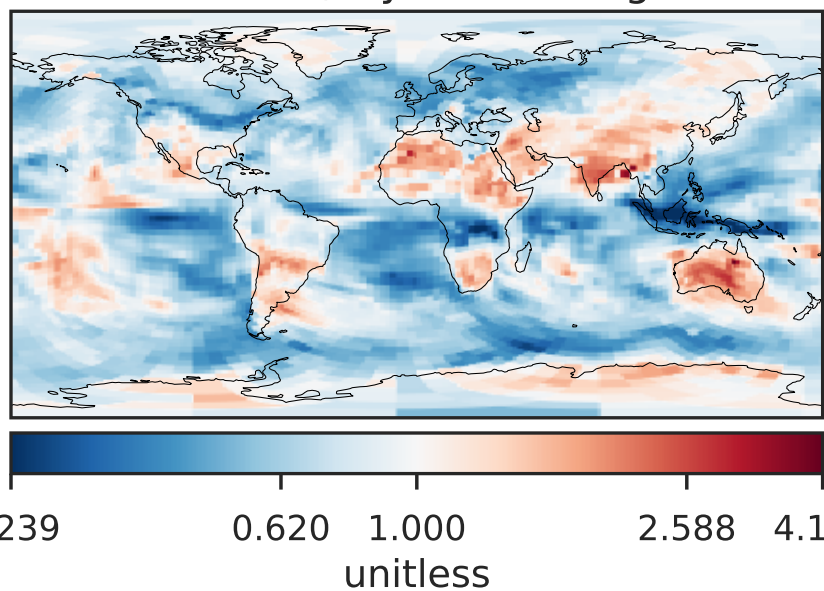
Difference (1x1.25)
Dev - Ref, Dynamic Range



Difference (1x1.25)
Dev - Ref, Restricted Range [5%,95%]



Ratio (1x1.25)
Dev/Ref, Dynamic Range



Ratio (1x1.25)
Dev/Ref, Fixed Range

