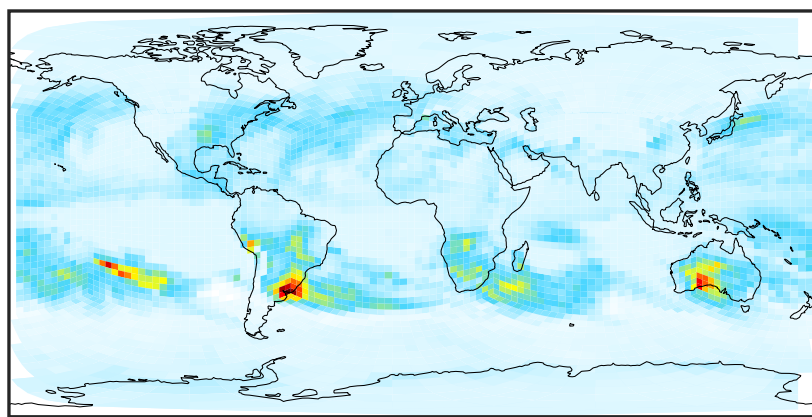
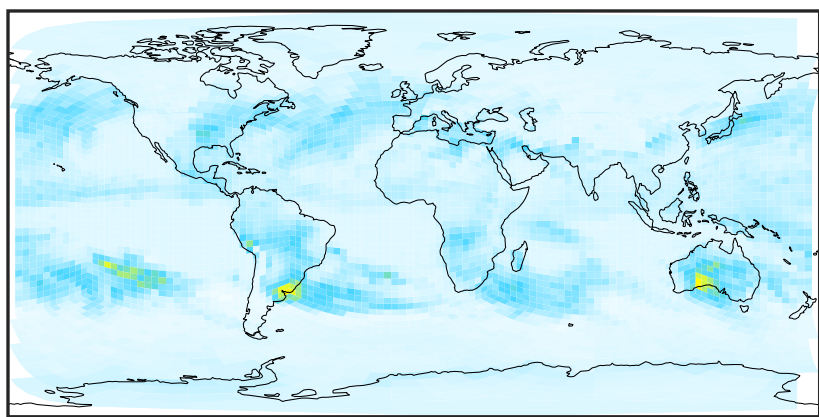


WetLossLS_Be10 (Oct2019)

GCHP 14.2.2 using wind (Ref), Normalized by Area
GCHP 14.2.2 using mass flux (Dev), Normalized by Area

c30

c30

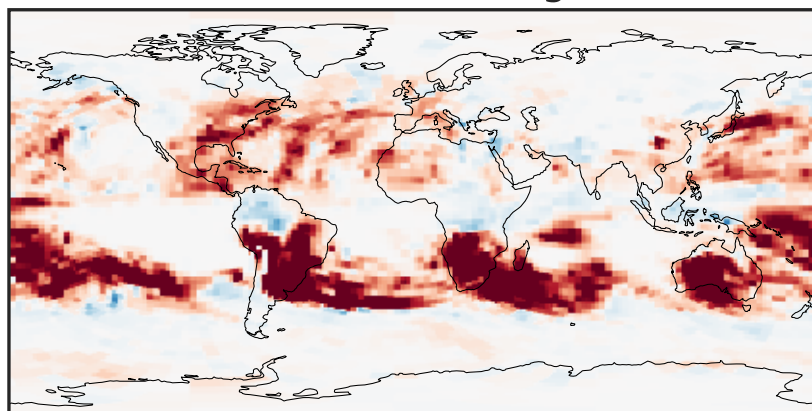
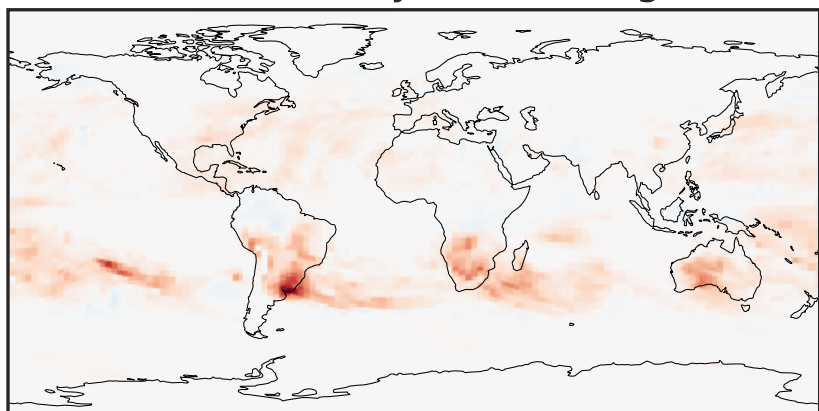


0.0 2.5 5.0 7.5
kg s-1 m-2 1e-24

0.0 2.5 5.0 7.5
kg s-1 m-2 1e-24

Difference (1x1.25)
Dev - Ref, Dynamic Range

Difference (1x1.25)
Dev - Ref, Restricted Range [5%,95%]

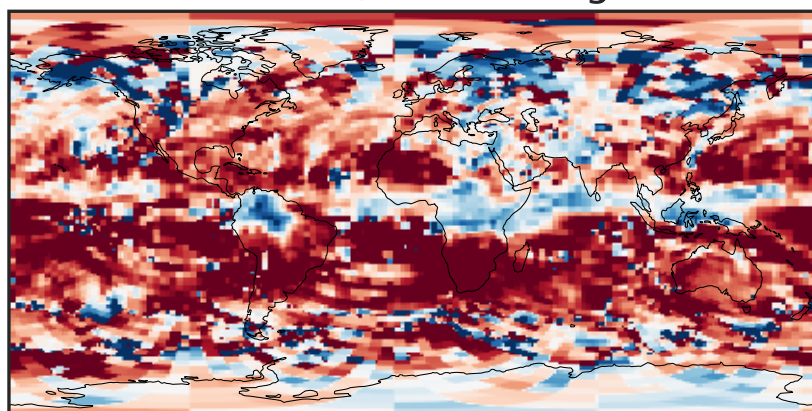
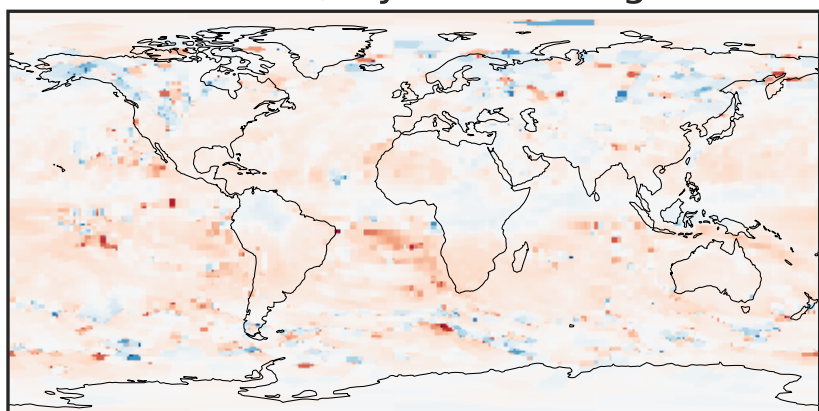


-2.5 0.0 2.5
kg s-1 m-2 1e-24

-4 0 4
kg s-1 m-2 1e-25

Ratio (1x1.25)
Dev/Ref, Dynamic Range

Ratio (1x1.25)
Dev/Ref, Fixed Range

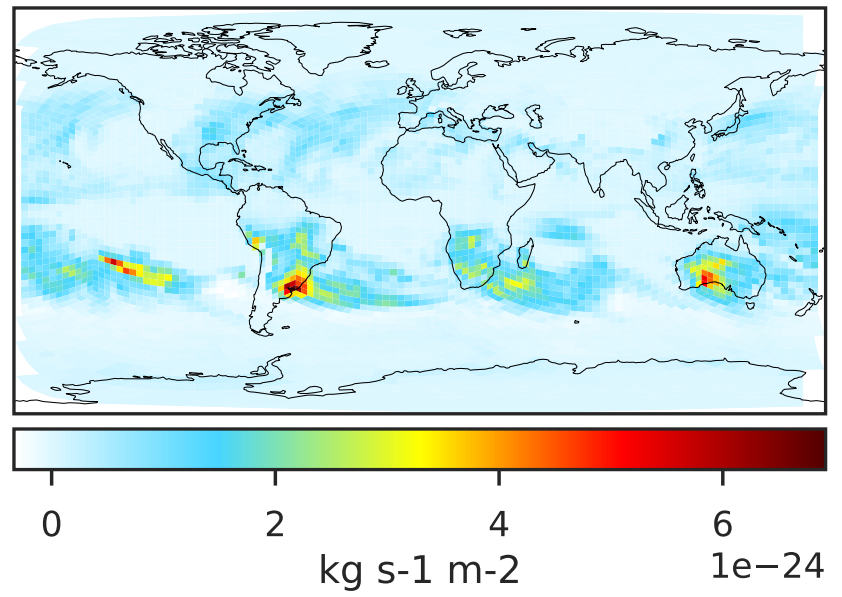
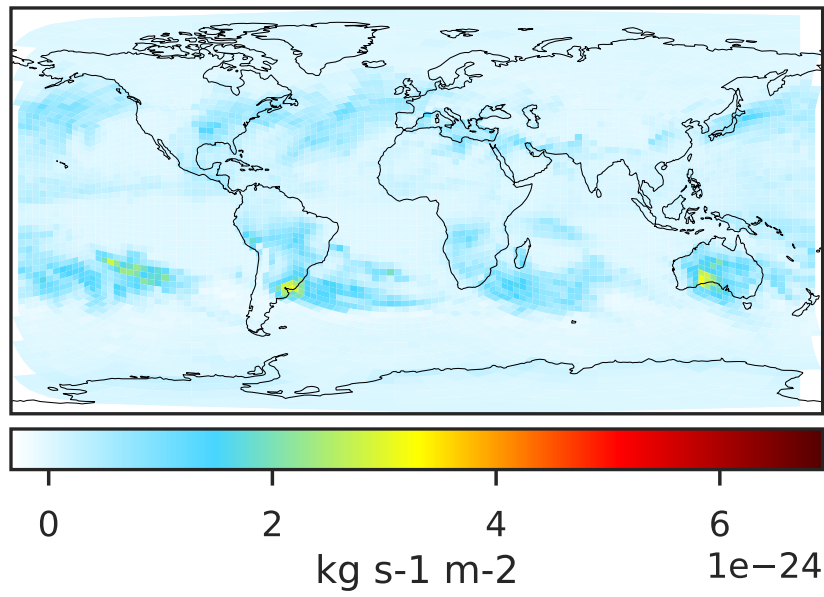


1e-03 1e-02 1e-01 1 10 100 1000
unitless

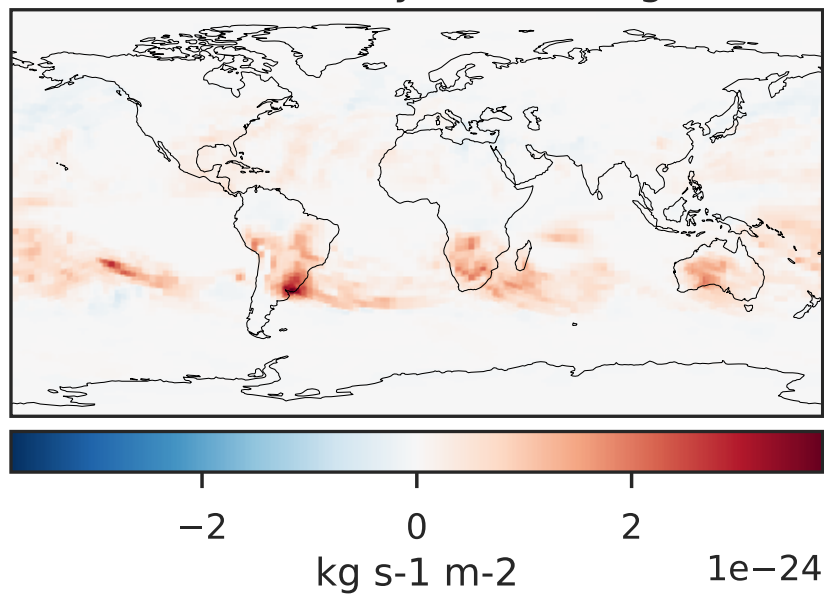
0.50 0.75 1.00 1.50 2.00
unitless

WetLossLS_Be10s (Oct2019)

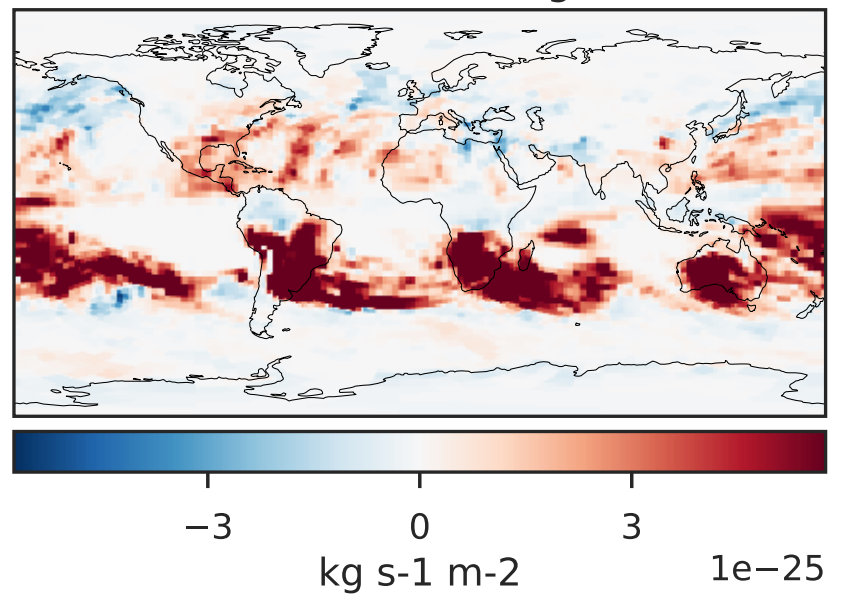
GCHP 14.2.2 using wind (Ref), Normalized by Area c30 GCHP 14.2.2 using mass flux (Dev), Normalized by Area c30



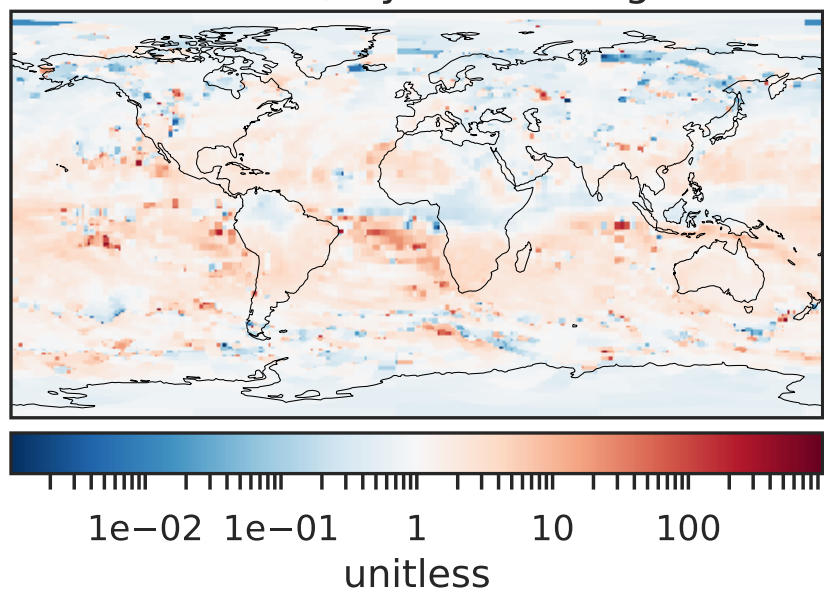
Difference (1x1.25)
Dev - Ref, Dynamic Range



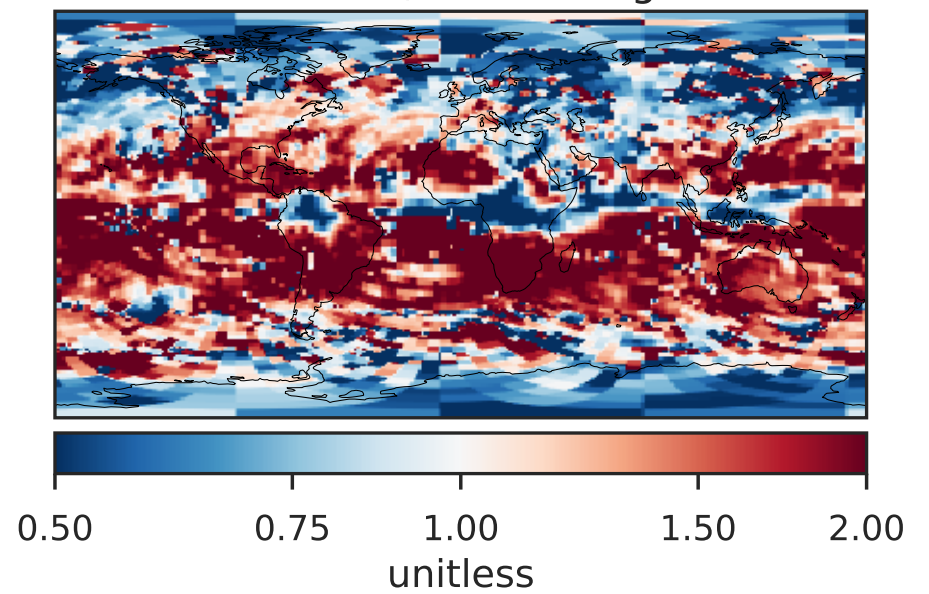
Difference (1x1.25)
Dev - Ref, Restricted Range [5%,95%]



Ratio (1x1.25)
Dev/Ref, Dynamic Range

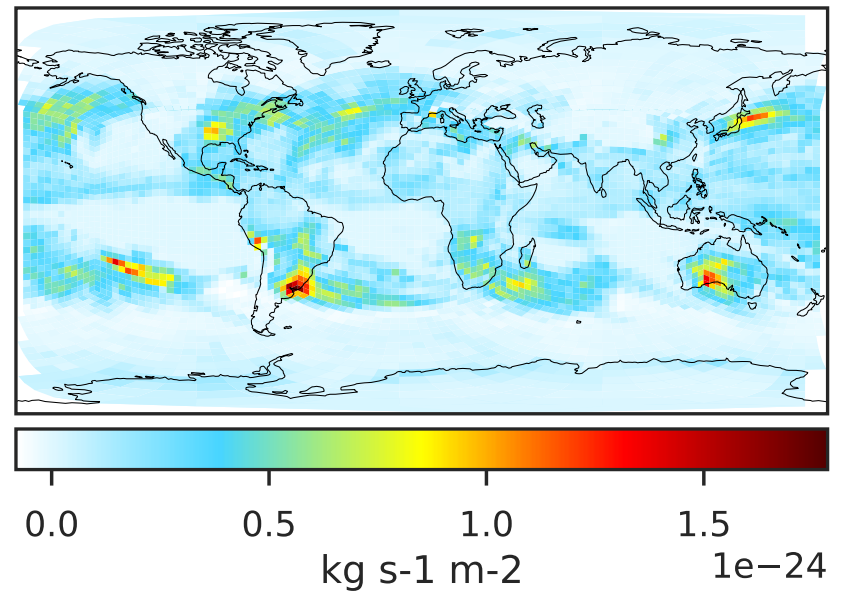
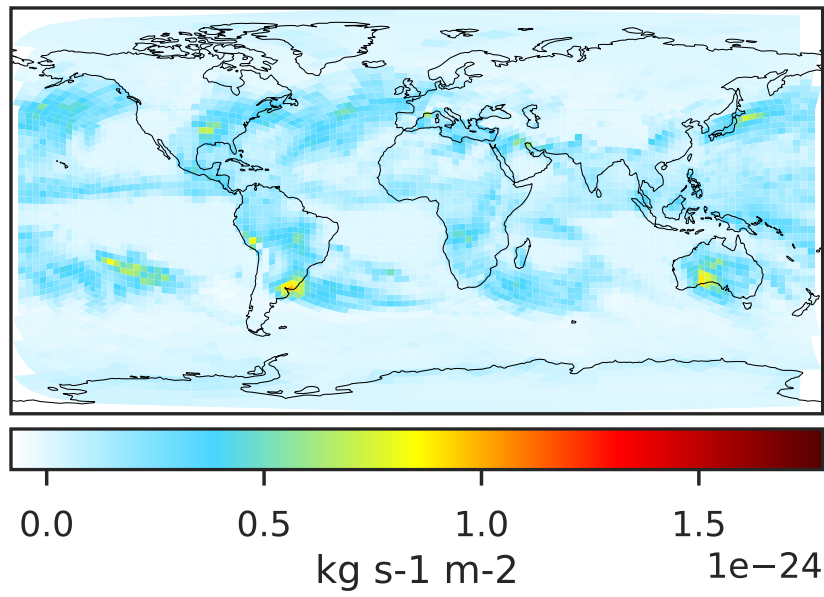


Ratio (1x1.25)
Dev/Ref, Fixed Range

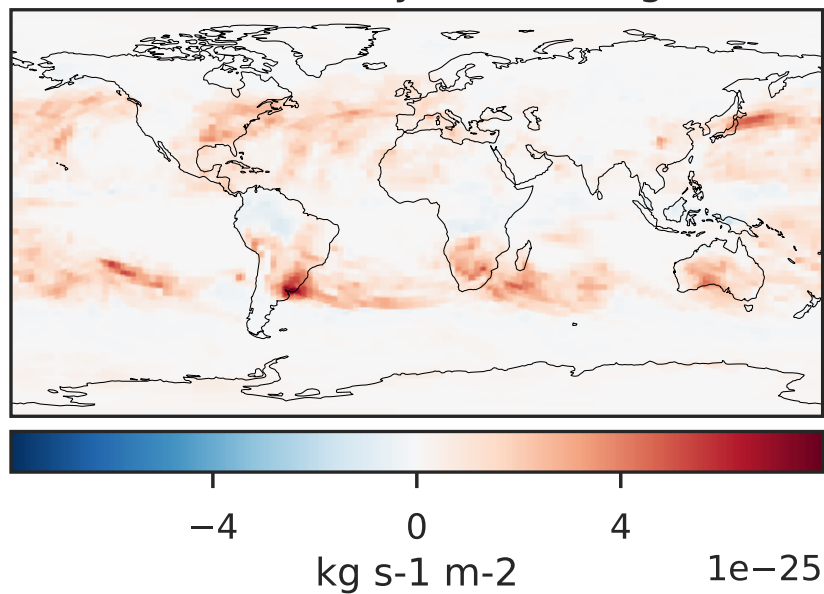


WetLossLS_Be7 (Oct2019)

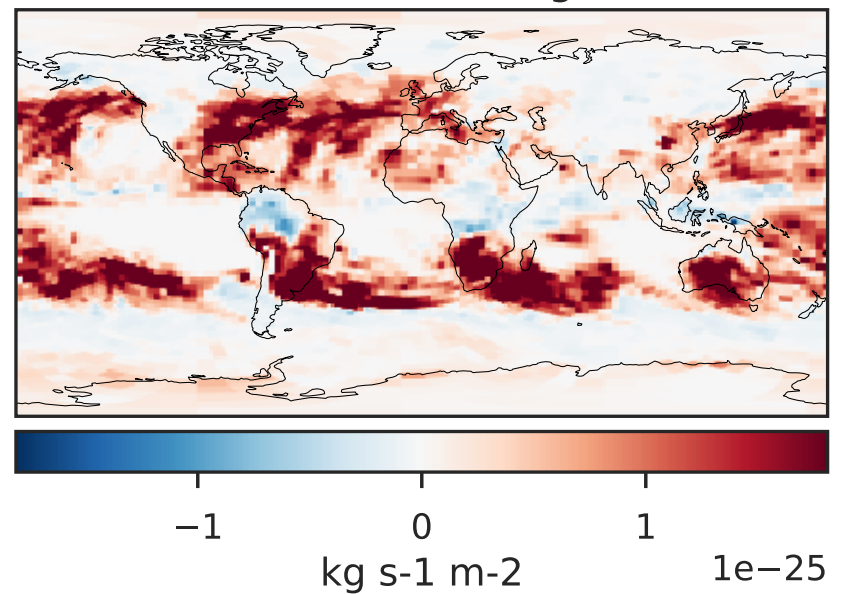
GCHP 14.2.2 using wind (Ref), Normalized by Area
GCHP 14.2.2 using mass flux (Dev), Normalized by Area



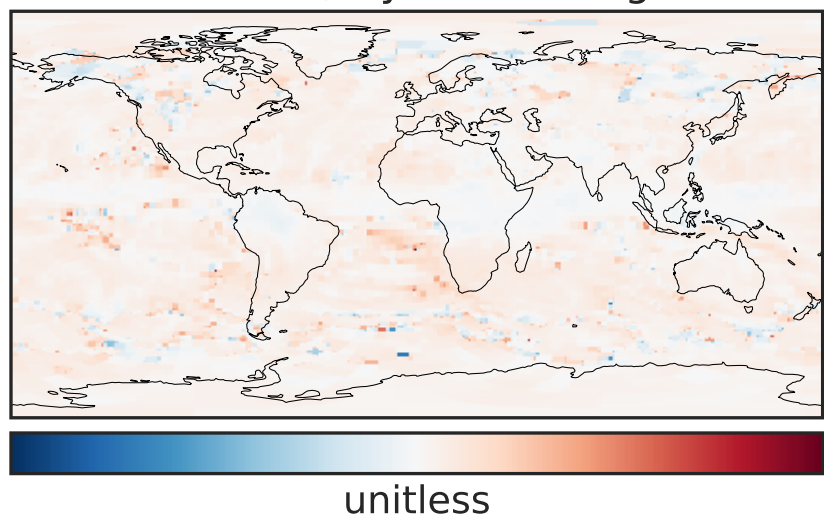
Difference (1x1.25)
Dev - Ref, Dynamic Range



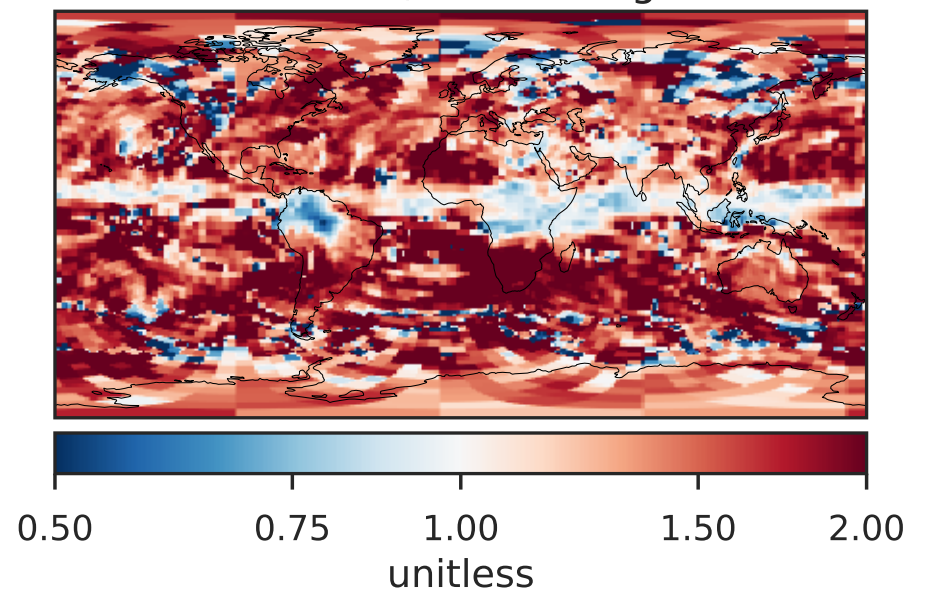
Difference (1x1.25)
Dev - Ref, Restricted Range [5%,95%]



Ratio (1x1.25)
Dev/Ref, Dynamic Range

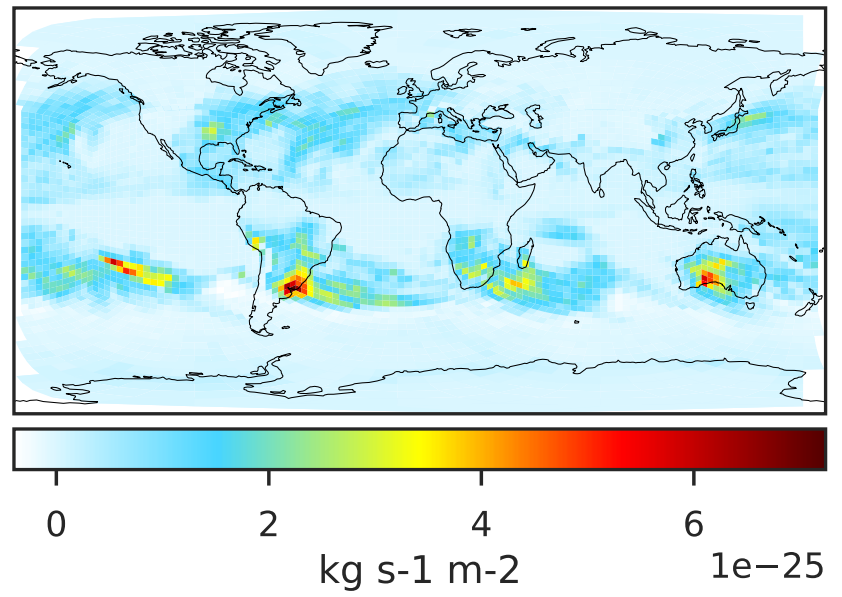
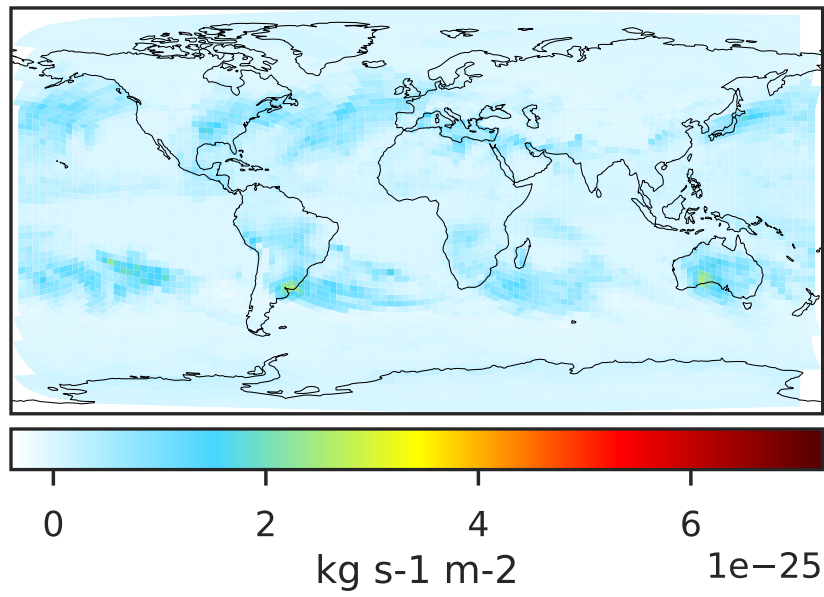


Ratio (1x1.25)
Dev/Ref, Fixed Range

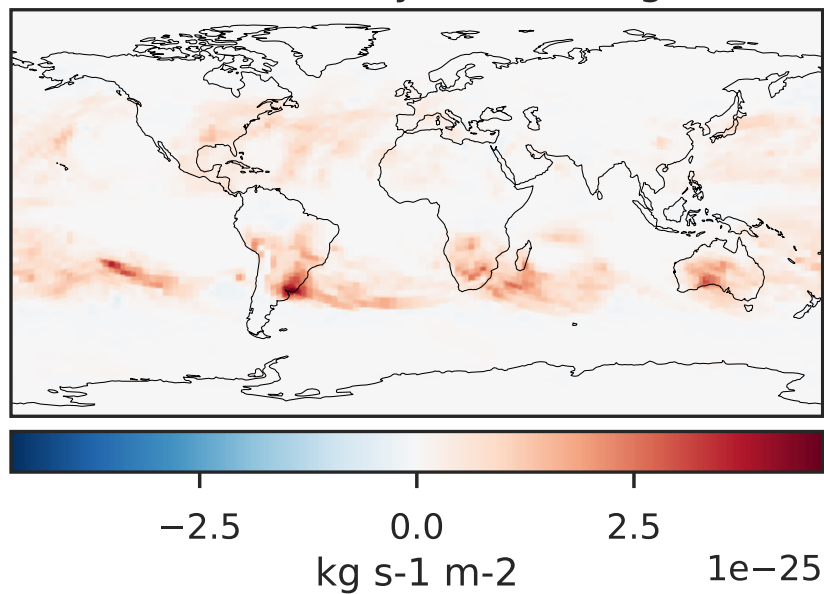


WetLossLS_Be7s (Oct2019)

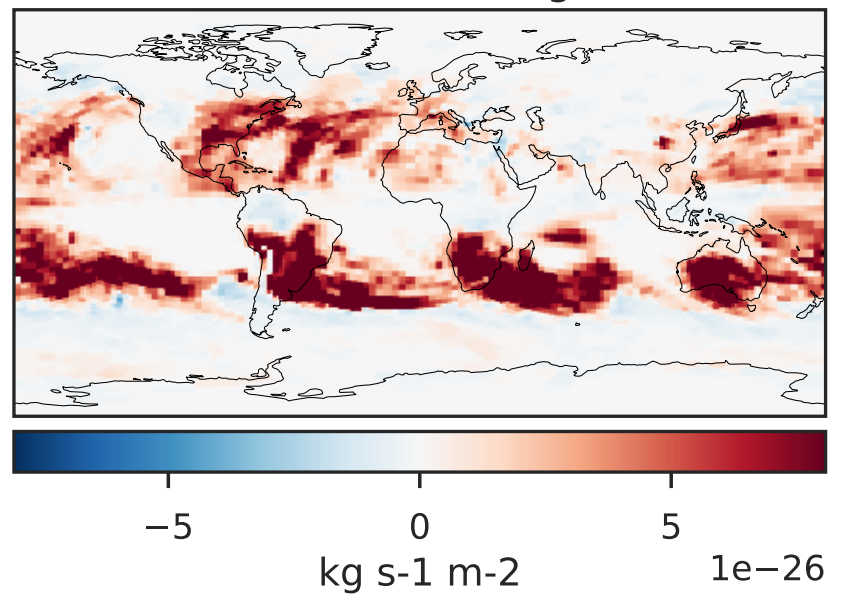
GCHP 14.2.2 using wind (Ref), Normalized by Area
GCHP 14.2.2 using mass flux (Dev), Normalized by Area



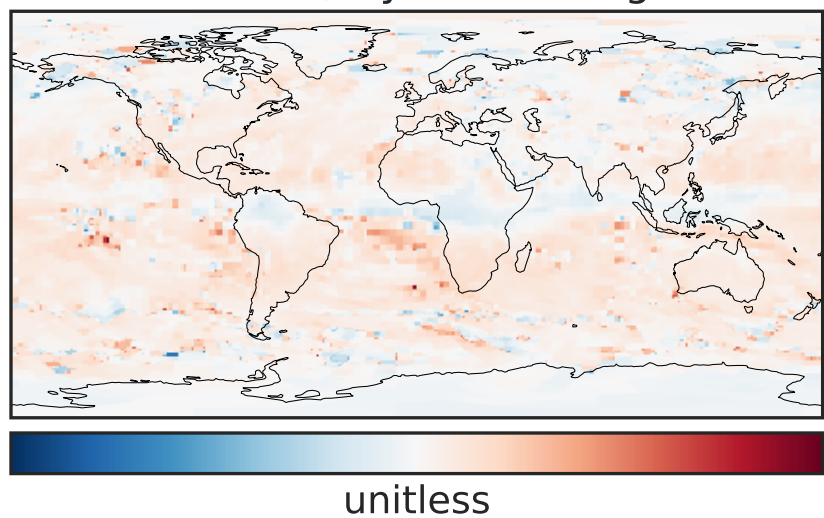
Difference (1x1.25)
Dev - Ref, Dynamic Range



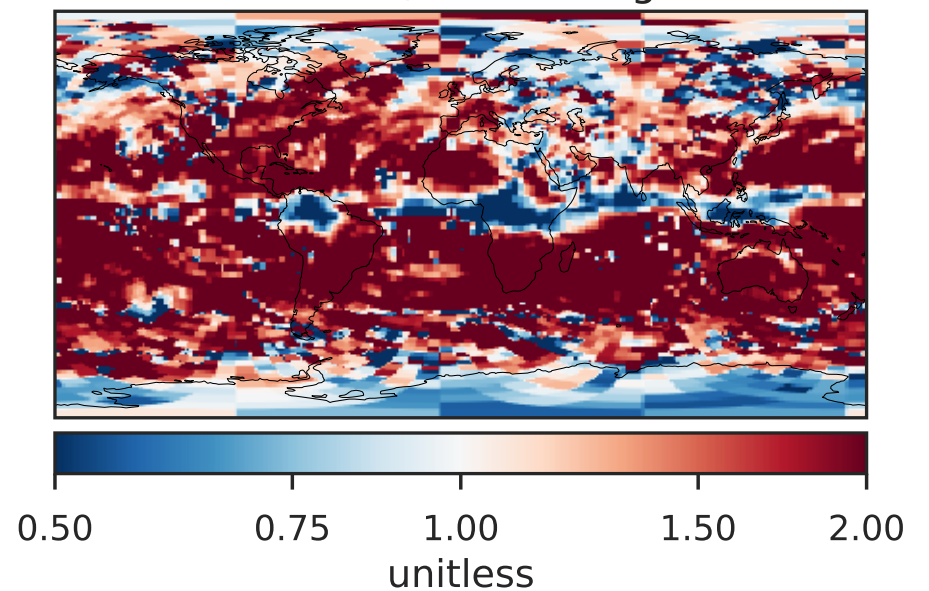
Difference (1x1.25)
Dev - Ref, Restricted Range [5%,95%]



Ratio (1x1.25)
Dev/Ref, Dynamic Range

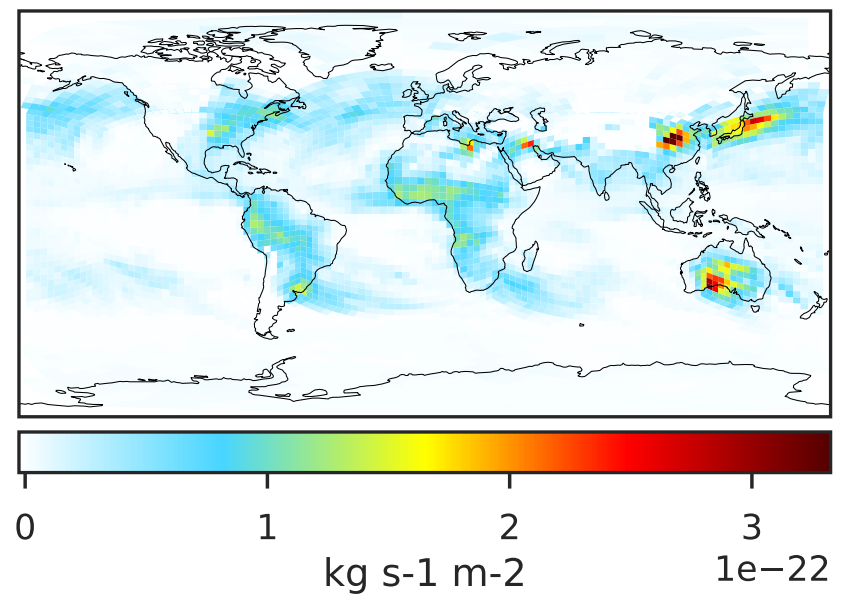
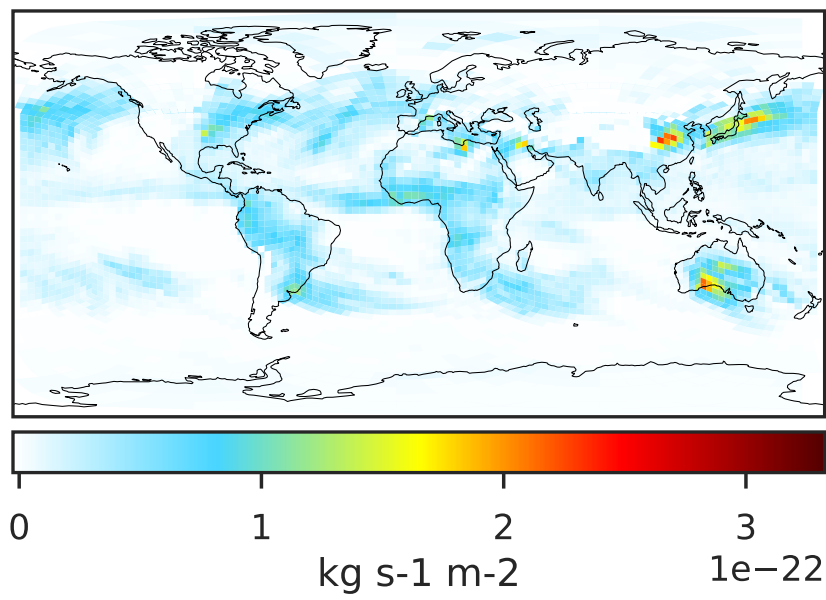


Ratio (1x1.25)
Dev/Ref, Fixed Range

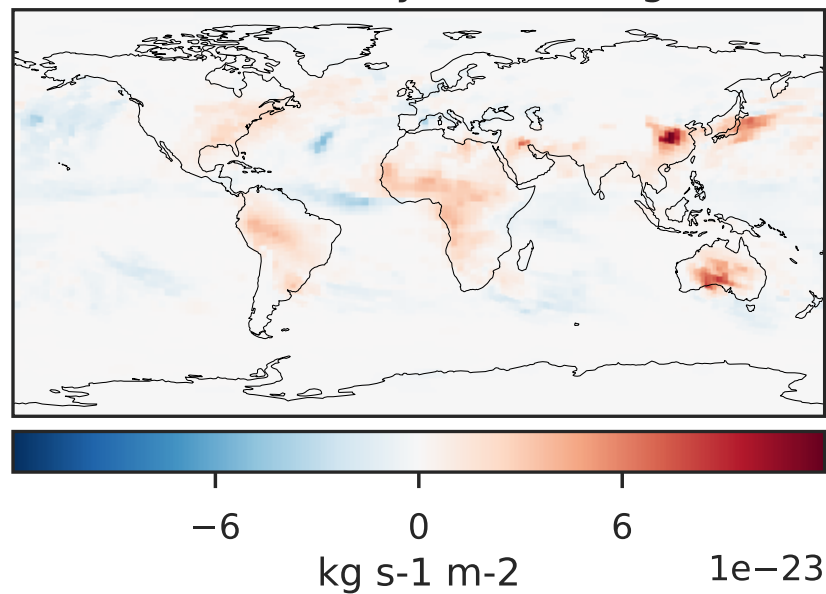


WetLossLS_Pb210 (Oct2019)

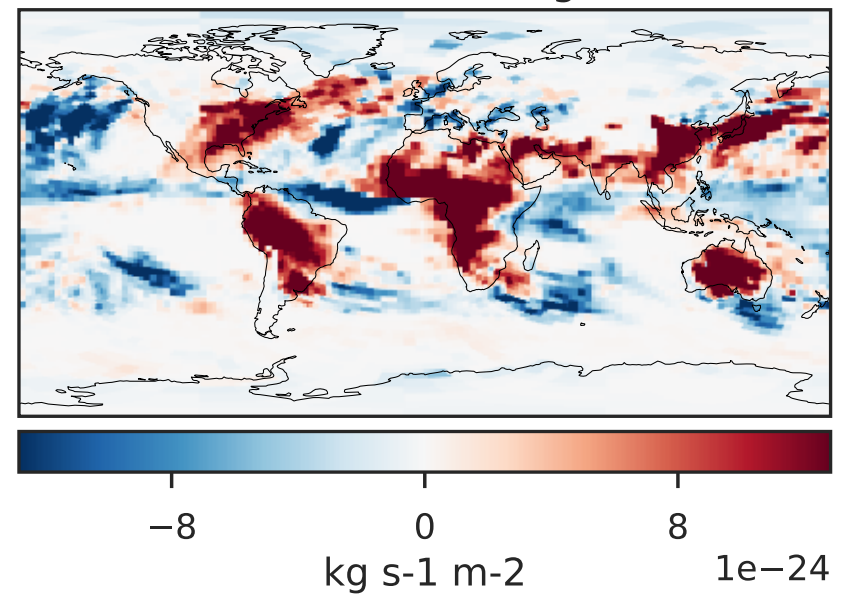
GCHP 14.2.2 using wind (Ref), Normalized by Area
GCHP 14.2.2 using mass flux (Dev), Normalized by Area



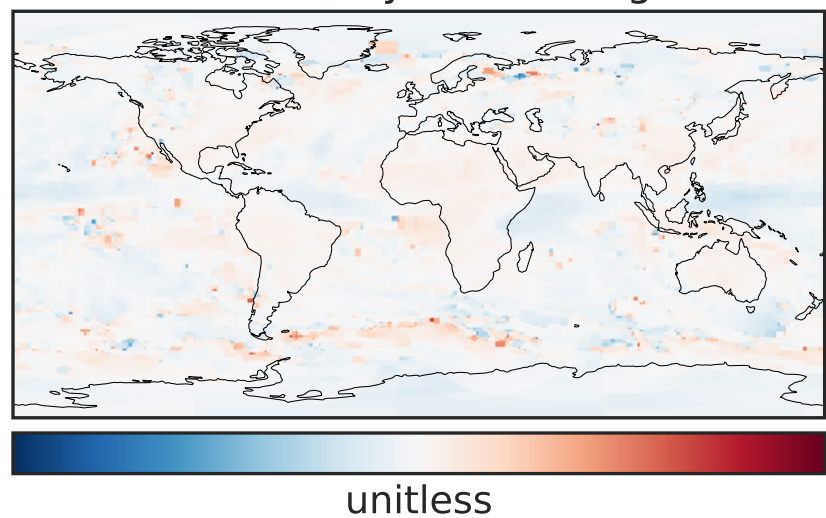
Difference (1x1.25)
Dev - Ref, Dynamic Range



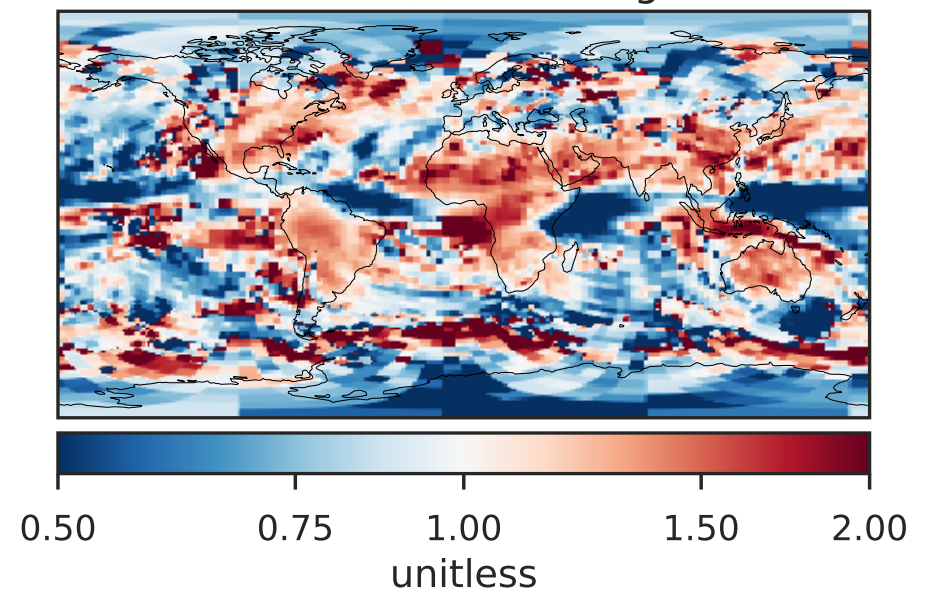
Difference (1x1.25)
Dev - Ref, Restricted Range [5%,95%]



Ratio (1x1.25)
Dev/Ref, Dynamic Range

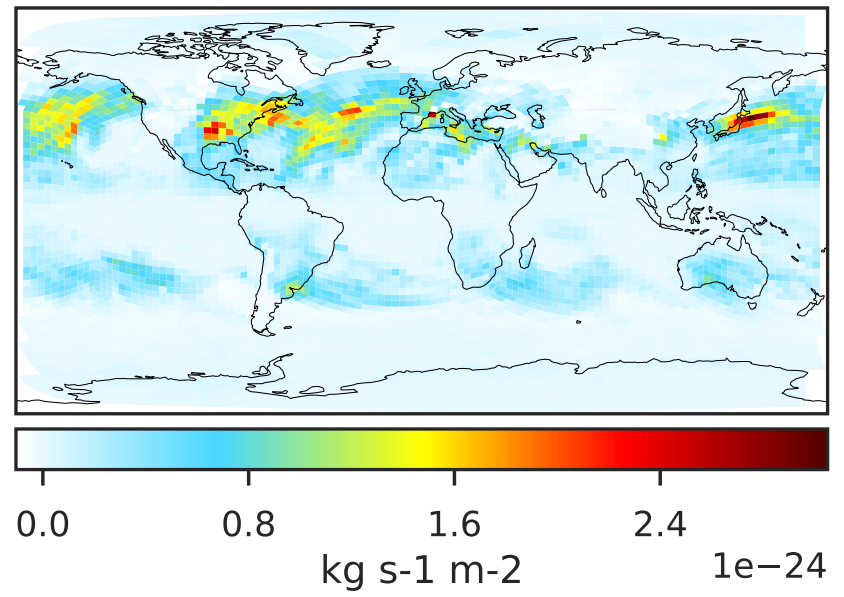
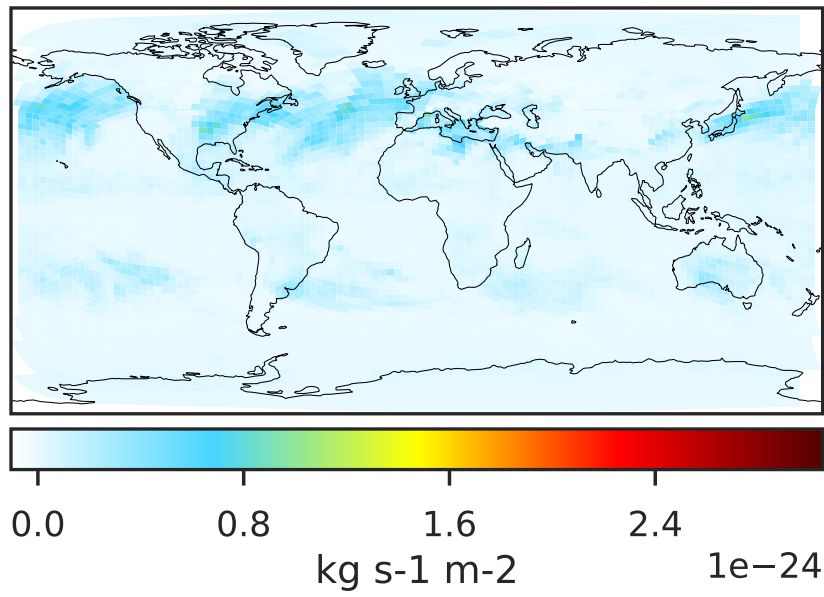


Ratio (1x1.25)
Dev/Ref, Fixed Range

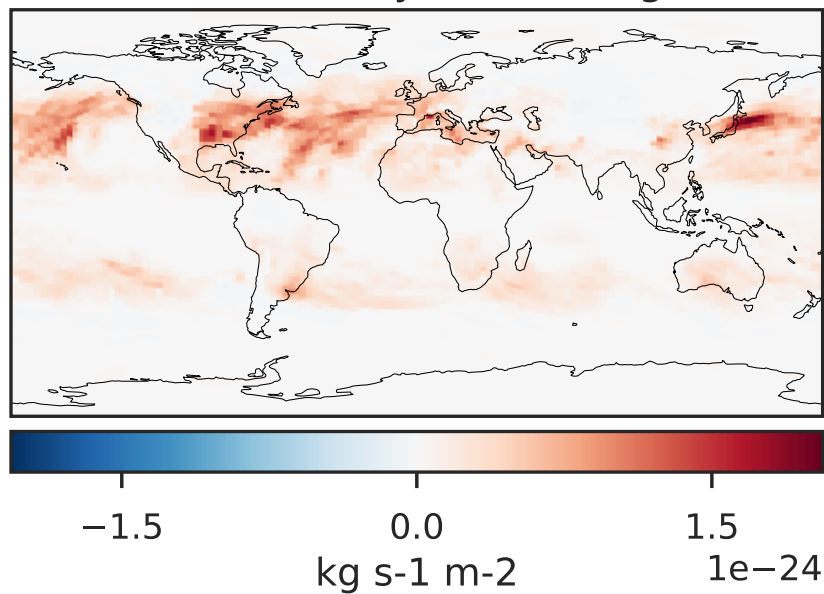


WetLossLS_Pb210s (Oct2019)

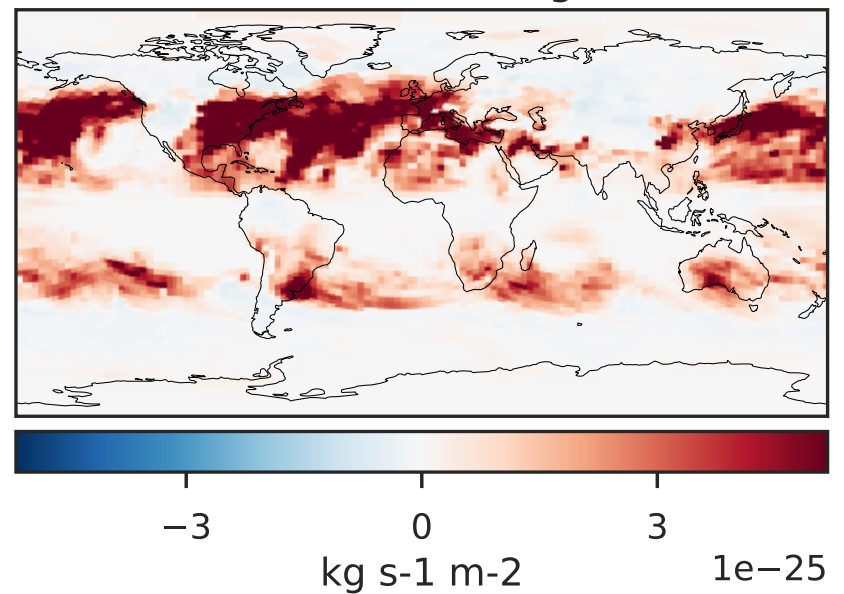
GCHP 14.2.2 using wind (Ref), Normalized by Area c30 GCHP 14.2.2 using mass flux (Dev), Normalized by Area c30



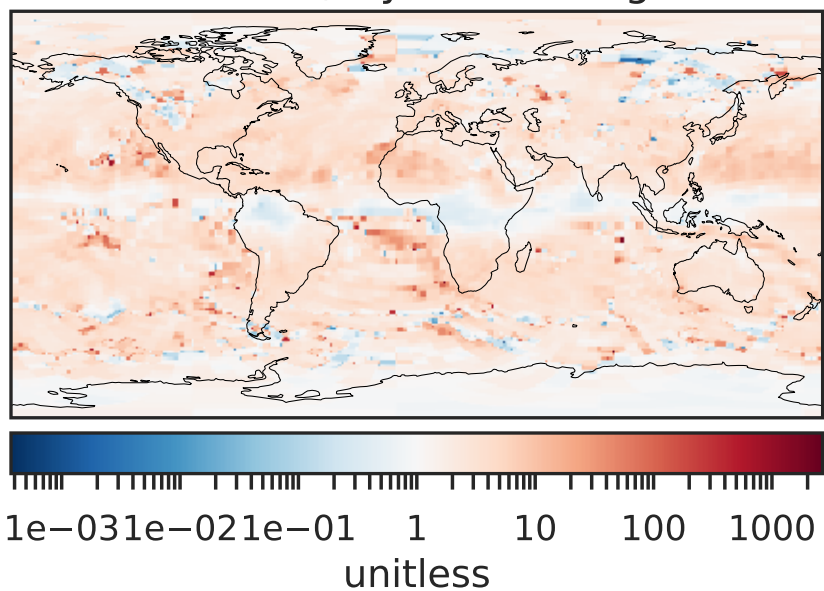
Difference (1x1.25)
Dev - Ref, Dynamic Range



Difference (1x1.25)
Dev - Ref, Restricted Range [5%,95%]



Ratio (1x1.25)
Dev/Ref, Dynamic Range



Ratio (1x1.25)
Dev/Ref, Fixed Range

