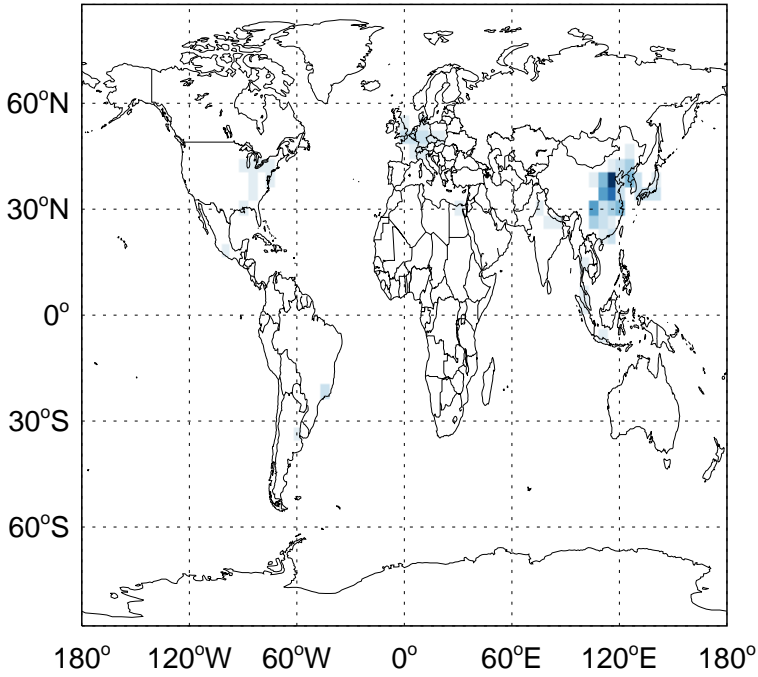


GEOS-Chem Absolute Emission Differences

v11-02c - v11-01-public-Run0

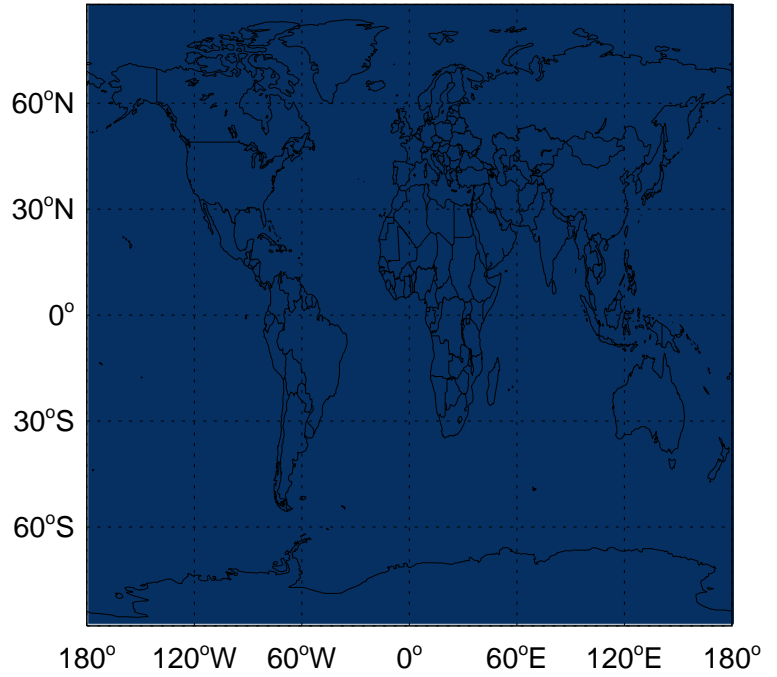
BC column anthro emissions for Apr



-6.95e+08 0.00e+00 6.95e+08 kg C

v11-02c - v11-02a

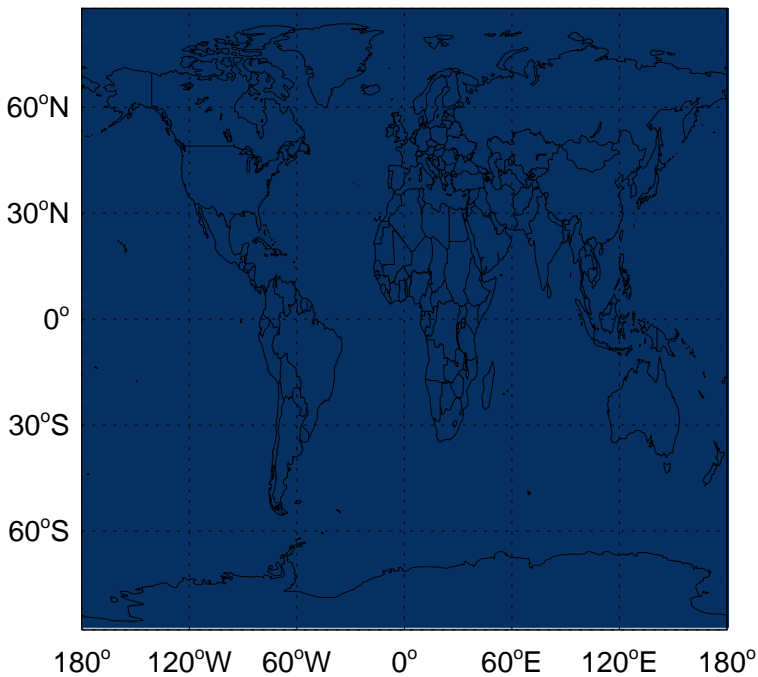
BC column anthro emissions for Apr



0.00e+00 6.95e+08 kg C

v11-02c - v11-01-public-Run0

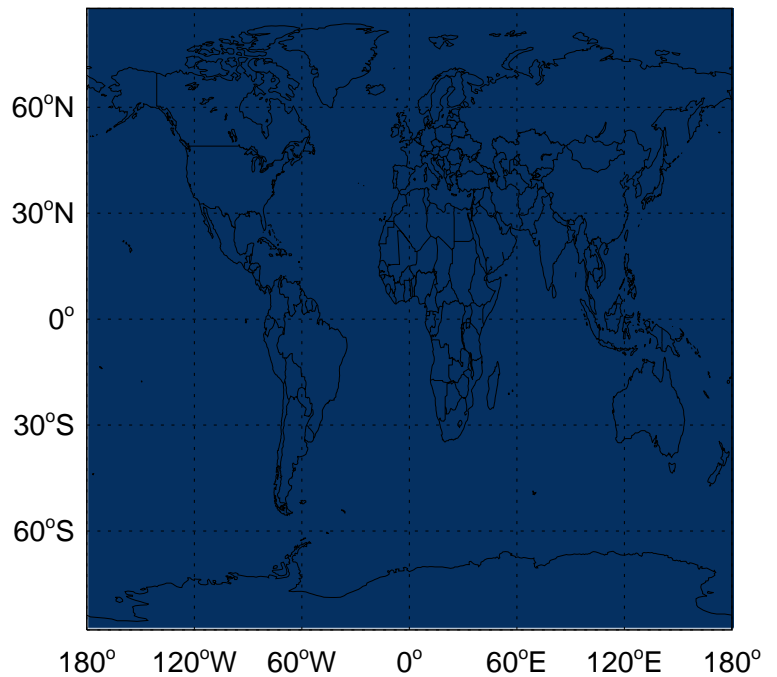
BC biofuel emissions for Apr



0.00e+00 6.95e+08 kg C

v11-02c - v11-02a

BC biofuel emissions for Apr

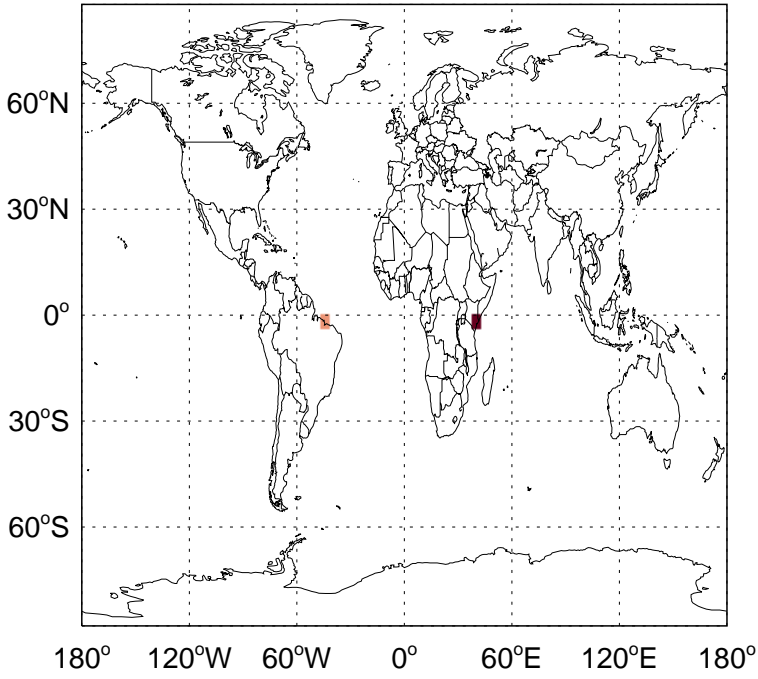


0.00e+00 6.95e+08 kg C

GEOS-Chem Absolute Emission Differences

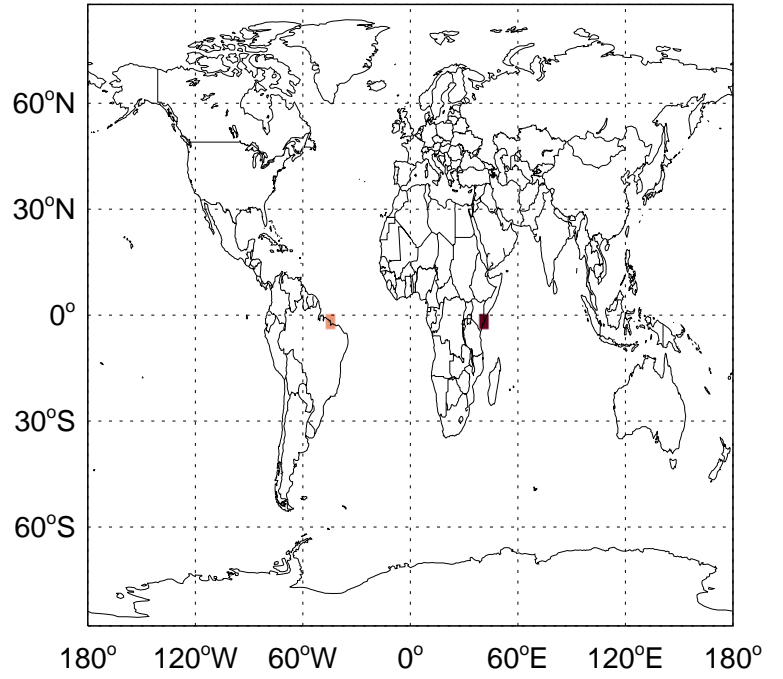
v11-02c - v11-01-public-Run0

BC biomass emissions for Apr



v11-02c - v11-02a

BC biomass emissions for Apr



-5.86e-03

0.00e+00

5.86e-03 kg C

-5.86e-03

0.00e+00

5.86e-03 kg C